

**Gentran:Server<sup>®</sup> for Windows<sup>®</sup>**

**HTTP Gateway  
Configuration Guide**

Version 5.2

**Sterling Commerce**  
An IBM Company

## Copyright Notice

### **Gentran:Server for Windows**

© Copyright 1995–2008  
Sterling Commerce, Inc.  
ALL RIGHTS RESERVED

### **Sterling Commerce Software** Trade Secret Notice

**THE GENTRAN:SERVER FOR WINDOWS SOFTWARE ("STERLING COMMERCE SOFTWARE") IS THE CONFIDENTIAL AND TRADE SECRET PROPERTY OF STERLING COMMERCE, INC., ITS AFFILIATED COMPANIES OR ITS OR THEIR LICENSORS, AND IS PROVIDED UNDER THE TERMS OF A LICENSE AGREEMENT. NO DUPLICATION OR DISCLOSURE WITHOUT PRIOR WRITTEN PERMISSION. RESTRICTED RIGHTS.**

This documentation, the Sterling Commerce Software it describes, and the information and know-how they contain constitute the proprietary, confidential and valuable trade secret information of Sterling Commerce, Inc., its affiliated companies or its or their licensors, and may not be used for any unauthorized purpose, or disclosed to others without the prior written permission of the applicable Sterling Commerce entity. This documentation and the Sterling Commerce Software that it describes have been provided pursuant to a license agreement that contains prohibitions against and/or restrictions on their copying, modification and use. Duplication, in whole or in part, if and when permitted, shall bear this notice and the Sterling Commerce, Inc. copyright notice.

As and when provided to any governmental entity, government contractor or subcontractor subject to the FARs, this documentation is provided with RESTRICTED RIGHTS under Title 48 CFR 52.227-19. Further, as and when provided to any governmental entity, government contractor or subcontractor subject to DFARs, this documentation and the Sterling Commerce Software it describes are provided pursuant to the customary Sterling Commerce license, as described in Title 48 CFR 227-7202 with respect to commercial software and commercial software documentation.

These terms of use shall be governed by the laws of the State of Ohio, USA, without regard to its conflict of laws provisions. If you are accessing the Sterling Commerce Software under an executed agreement, then nothing in these terms and conditions supersedes or modifies the executed agreement.

Product names mentioned herein may be trademarks and/or registered trademarks of their respective companies. Gentran and Gentran:Server are registered trademarks of Sterling Commerce, Inc.

### **Third Party Software:**

Portions of the Sterling Commerce Software may include products, or may be distributed on the same storage media with products, ("Third Party Software") offered by third parties ("Third Party Licensors").

### **Warranty Disclaimer**

This documentation and the Sterling Commerce Software which it describes are licensed either "AS IS" or with a limited warranty, as set forth in the Sterling Commerce license agreement. Other than any limited warranties provided, NO OTHER WARRANTY IS EXPRESSED AND NONE SHALL BE IMPLIED, INCLUDING THE WARRANTIES OF MERCHANTABILITY AND FITNESS FOR USE OR FOR A PARTICULAR PURPOSE. The applicable Sterling Commerce entity reserves the right to revise this publication from time to time and to make changes in the content hereof without the obligation to notify any person or entity of such revisions or changes.

The Third Party Software is provided 'AS IS' WITHOUT ANY WARRANTY AND ANY EXPRESSED OR IMPLIED WARRANTIES, INCLUDING BUT NOT LIMITED TO, THE IMPLIED WARRANTIES OF MERCHANTABILITY, AND FITNESS FOR A PARTICULAR PURPOSE ARE DISCLAIMED. FURTHER, IF YOU ARE LOCATED OR ACCESSING THIS SOFTWARE IN THE UNITED STATES, ANY EXPRESS OR IMPLIED WARRANTY REGARDING TITLE OR NON-INFRINGEMENT ARE DISCLAIMED.

---

# Table of Contents

Preface	About This Guide	
	▶ Introduction .....	iv
	▶ Description of Contents .....	v
	▶ Getting Support .....	vi
Chapter 1	HTTP Gateway Overview	
	▶ Overview .....	1-2
	▶ HTTP Gateway .....	1-3
	▶ HTTP Gateway Mailboxes .....	1-5
	▶ HTTP Gateway Flow .....	1-6
Chapter 2	Configuring Communications	
	▶ Introduction .....	2-2
	<b>Properties</b> .....	<b>2-3</b>
	▶ Mailbox Properties .....	2-3
	<b>Procedures</b> .....	<b>2-10</b>
	▶ Configuration process .....	2-10
	▶ How to Create HTTP Gateway Mailboxes .....	2-12
	▶ How to Modify Mailbox Properties .....	2-18
Appendix A	HTTP Gateway Database Table Layout	
	▶ Introduction .....	A-2
	▶ DeliveryQuery_tb .....	A-3
Appendix B	HTTP Gateway Error Messages	
	▶ Introduction .....	B-2
	<b>HTTP Gateway Error Messages</b> .....	<b>B-3</b>
	▶ Delivery Query Messages .....	B-3
	▶ HTTP Gateway Error Messages .....	B-6
	▶ SCMailData Error Messages .....	B-8



# About This Guide

---

## Contents

- ▶ Introduction . . . . .iv
  - ▶ Description of Contents . . . . .v
  - ▶ Getting Support . . . . .vi
-

# Introduction

---

**Overview** This manual contains the tasks you must follow to:

- configure the Gentran:Server HTTP Gateway
- create HTTP Gateway mailboxes

---

**Intended audience** The intended audience for this manual is Gentran:Server system administrators.

---

**Prerequisite knowledge** The audience using this software should be familiar with:

- Your operating system
- MIME headers

**Reference**

See this URL for more information on MIME headers:

<http://www.ietf.org/rfc/rfc2045.txt>

---

# Description of Contents

---

**Introduction**

This guide is organized into the tasks that you complete when configuring communications for the HTTP Gateway.

---

**Organization of chapters**

The guide is organized into chapters. A brief description of each chapter's contents follows.

- About This Guide explains the content, organization, and conventions in this guide.
  - HTTP Gateway Overview provides a high-level overview of the HTTP Gateway.
  - Configuring Communications explains the process for configuring HTTP Gateway communications. This chapter also provides the procedures you must follow to configure your HTTP Gateway Mailboxes.
-

## Getting Support

**Introduction** Sterling Commerce's Gentran:Server software is supported by trained product support personnel who are available to help you with product questions or concerns.

**Note**

Gentran:Server Customer Support does not support non-Sterling Commerce products (e.g., SQL Server, Oracle, etc.), but can assist you in configuring non-Sterling Commerce products to work with Gentran:Server.

**Phone number** For assistance, please refer to your *Getting Started Guide* to determine which support phone number you should use.

**Before calling support**

To help us provide prompt service, we ask that you do the following:

- Attempt to recreate any problem that you encounter and record the exact sequence of events.
- When you call product support, you should be prepared to provide us with the information below.

Information	Description
Identification	Your company name, your name, telephone number and extension, and the case number (if the question refers to a previously reported issue).
System Configuration	The Gentran:Server version (and any service packs installed) and information about the primary Gentran system controller and all machines experiencing problems, including: the Windows operating system version, amount of memory, available disk space, database version, Microsoft Data Access (MDAC) version, and Internet Explorer version.  Also, please describe any recent changes in your hardware, software, or the configuration of your system.
System Data Store	Which machines contain folders in the system data store?
Error Messages	Record the exact wording of any error messages you receive and the point in the software where the error occurred, as well as any log files.
Attempted Solutions	Record any steps that you took attempting to resolve the problem and note all the outcomes, and provide an estimate on how many times the problem occurred and whether it can be reproduced.



---

**Accessing the Sterling Commerce Support Web Site**

The Sterling Commerce Customer Support Web Site contains valuable information about getting support for Gentran:Server for Windows, including the:

- scope of support services
- customer support policies
- call prioritizing
- customer support phone directory
- how to create new Support on Demand cases
- how to check the status of Support on Demand cases
- how to add information to Support on Demand cases

The Customer Support Web Site is constantly updated and all Sterling Commerce customers have access to it. This web site also contains the most recent product updates and is a valuable source of product information.

**Reference**

Refer to the *Getting Started Guide* for information on how to access the Customer Support World Wide Web Site.

---

**Documentation**

The Customer Support Web Site contains a documentation library, which has the entire Gentran:Server for Windows documentation set. You can download the product manuals in PDF format from this library at any time.

---



---

# HTTP Gateway Overview

---

**Contents**

- ▶ Overview . . . . . 1 - 2
  - ▶ HTTP Gateway . . . . . 1 - 3
  - ▶ HTTP Gateway Mailboxes . . . . . 1 - 5
  - ▶ HTTP Gateway Flow . . . . . 1 - 6
-

## Overview

---

**In this chapter**

This chapter provides you with a high-level overview of the Gentran:Server HTTP Gateway.

---

**What is HTTP?**

HTTP (Hypertext Transfer Protocol) is an application-level protocol which allows distributed, collaborative, hypermedia information systems to function independently of the data they transfer.

---

**What is HTTPS?**

HTTPS (Hypertext Transfer Protocol Secure) is a secure version of HTTP.

---

**What is a Gateway?**

A Gateway is a software component that controls the transmission of messages between two parties. The gateway is responsible for using the correct protocols to transfer messages between the sender and receiver.

---

**What is a Mailbox?**

A mailbox stores messages until those messages are transferred to a recipient application. You are responsible for creating mailboxes. When you create mailboxes, you associate the mailbox with a gateway. The properties that you define for each mailbox determine how messages are transferred from or to your application via the gateway.

---

# HTTP Gateway

---

## Introduction

Gentran:Server supports multiple transfer protocols. The HTTP Gateway facilitates the transfer of inbound and outbound messages with the Mailbox Server via the Hypertext Transfer Protocol (HTTP) and the Secure HTTP via SSL.

The HTTP Gateway supports the following protocols:

- HTTP
- Hypertext Transfer Protocol Secure (HTTPS) (40 bit and 128 bit encryption)

### Note

All messages sent and received via the HTTP Gateway are sent via HTTP POST requests.

---

## Use with HTTP Message Forwarder

By using the HTTP Gateway and the HTTP Message Forwarder in concert, you can receive and send messages of any format from outside your enterprise using the HTTP or HTTPS transport methods in environments with double firewalls.

---

## Internet servers supported

The HTTP Gateway supports the following Internet servers:

- Microsoft Internet Information Server 4.0
  - Microsoft Internet Information Server 5.0
- 

## Setting up an IIS virtual directory

You need to manually set up one virtual directory for the HTTP Gateway. The actual directory for this virtual directory should be the your Gentran:Server Bin directory (usually c:\gensrvnt\bin). You must set the access permissions for this virtual directory to: **Read, Run scripts, and Execute.**

### Reference

Refer to your Microsoft IIS documentation for more information on creating this virtual directory.

---

## Steps if using SQL Server in a Single Workstation environment

If you are running the HTTP Gateway in a Single Workstation environment in which SQL Server is your database, you must add the following user to your GentranDatabase: IWAM\_pcName. You must also manually grant this user SELECT access to the DeliveryQuery\_tb database table. You do not need to grant any other access to this ID.

### Example

If the machine name is "GENSYS," the IWAM\_pcName user is "IWAM\_GENSYS" (no quotes).

### Reference

See your SQL Server documentation for more information on how to perform these tasks.

---

---

**Steps if using SQL Server in a Distributed System environment**

If you are running the HTTP Gateway in a Distributed System environment in which SQL Server is your database, you must edit the security properties for the virtual directory to give “anonymous access” to the Domain ID that has access to the machine on which your SQL Server GentranDatabase resides.

**Reference**

See your Microsoft documentation for more information on how to perform these tasks.

---

# HTTP Gateway Mailboxes

---

**Introduction**

You must configure properties for HTTP mailboxes you create.

**Reference**

See Configuring Communications, chapter 2 of this guide, for more information about configuring the HTTP mailboxes.

---

**Default mailbox**

By default, any message which does not contain MIME header information or which contain unrecognized MIME header information will be discarded. If you want to keep these type of messages, you must create an HTTP Gateway mailbox and set the three MIME header tag/value pairs to null strings. Then, the HTTP Gateway will attempt to find this mailbox and deliver to it any message with unrecognized or missing MIME header information.

---

## HTTP Gateway Flow

### Inbound message flow

This table describes the inbound flow of messages through the HTTP Gateway.

Stage	Process
1	An HTTP POST is received into IIS via the Internet or Intranet.
2	IIS forwards the POST to the SCDeliveryQuery.DLL, an ISAPI extension which functions at the inbound portion of the gateway.
3	SCDeliveryQuery.DLL uses the DeliveryQuery_tb database table to locate the Gentran:Server HTTP Gateway mailbox where the message belongs.  <b>Note</b> At this point, the system does MIME tag/value comparisons.
4	The incoming POST data (with the HTTP POST request header information prepended) is delivered to the appropriate HTTP Gateway mailbox Inbox.
5	The HTTP Gateway mailbox delivers the message to the recipients configured for that mailbox.

### Outbound message flow

This table describes the outbound flow of messages through the HTTP Gateway.

Stage	Process
1	An outbound message in its final format is generated and placed in Inbox of HTTP Gateway mailbox.
2	The Gentran:Server Mailbox service passes the message to the HTTP Gateway.
3	The HTTP Gateway uses the URL which is configured for that mailbox to send the message via an HTTP POST using the outermost MIME as the HTML post request header. HTTP or HTTPS (SSL) is used to transmit the request.
4	An HTTP status code is returned indicating the success or failure of the HTTP POST request.
5	If the HTTP POST request is successful (which usually means that an HTTP 200 status code was returned), the HTTP Gateway will update the status of the outgoing message to read.  If the HTTP POST request is not successful, the status of the outgoing message will remain unread. In either case, an audit log message is written to the Gentran:Server Audit Log.



---

**Message destination**

The destination of the message is any valid URL.

---

**Message status**

When a message is sent to the HTTP Gateway, the message status is changed to “Sent.” When the HTTP Gateway submits a process to the HTTP server, the message status is changed to “Sent Third-Party.” When the HTTP process completes, the message status is changed to “Read” (if the process was successful) or to “Unread” (if the process was unsuccessful.).

---

**Related topic**

See “Tracking Messages” in the *Communications User’s Guide* for additional information.

---



---

# Configuring Communications

---

<b>Contents</b>	▶ Introduction . . . . .	2 - 2
	<b>Properties . . . . .</b>	<b>2 - 3</b>
	▶ Mailbox Properties . . . . .	2 - 3
	<b>Procedures . . . . .</b>	<b>2 - 10</b>
	▶ Configuration process . . . . .	2 - 10
	▶ How to Create HTTP Gateway Mailboxes . . . . .	2 - 12
	▶ How to Modify Mailbox Properties . . . . .	2 - 18

---

## Introduction

---

**In this chapter** This chapter describes the tasks that you must complete to configure your HTTP Gateway and HTTP Gateway Mailbox.

**Note**

There are no gateway-level properties to configure for the HTTP Gateway.

---

**Key Terms** This table describes key terms used in this chapter.

Term	Description
Gateway	Gateways are software components that control the transmission of messages between two parties. The gateway is responsible for using the correct protocols to transfer messages between the sender and receiver.
HTTP	HTTP (Hypertext Transfer Protocol) is an application-level protocol which allows distributed, collaborative, hypermedia information systems to function independently of the data they transfer.
HTTPS	HTTPS (Hypertext Transfer Protocol Secure) is a secure version of HTTP.
Mailbox	A folder or set of folders used to store messages.

---

# Properties

## Mailbox Properties

**Introduction** The Mailbox Properties dialog box enables you to define the properties of the mailbox.

**Addressing tab diagram** This diagram illustrates the Addressing tab of the Mailbox Properties dialog box.

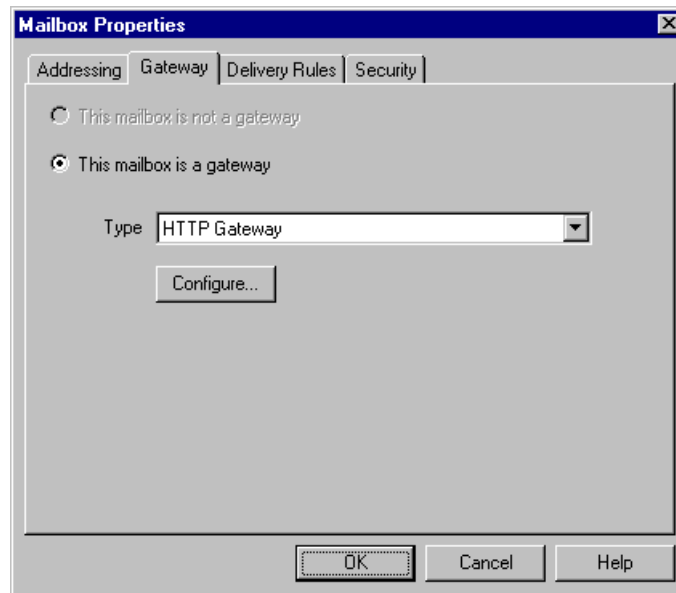


**Addressing tab parts and functions** This table describes the parts of the Addressing tab of the Mailbox Properties dialog box and their functions.

Part	Function
Name	Defines the name of the mailbox.
Gentran Email address	Defines the Gentran:Server E-mail address for messages sent from the mailbox.
<b>OK</b>	Saves changes; exits dialog.
<b>Cancel</b>	Closes dialog without saving changes.
<b>Help</b>	Accesses online help.

### Gateway tab diagram

This diagram illustrates the Gateway tab of the Mailbox Properties dialog box.



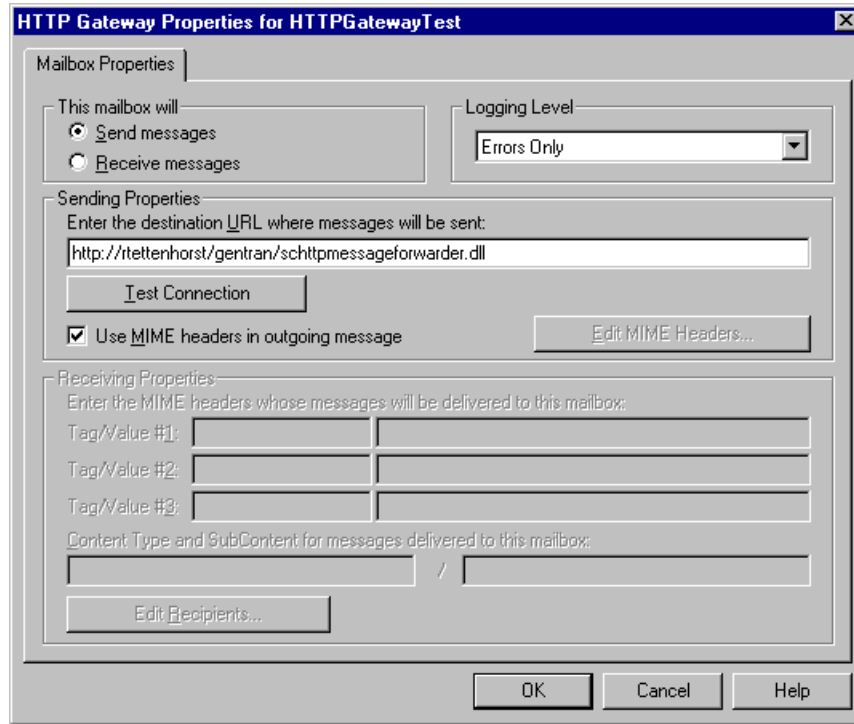
### Gateway tab parts and functions

This table describes the parts of the Gateway tab of the Mailbox Properties dialog box and their functions.

Part	Function
This mailbox is not a gateway  This mailbox is a gateway	Specifies whether the mailbox is or is not a gateway.  Options are: <ul style="list-style-type: none"> <li>▶ This mailbox is not a gateway</li> <li>▶ This mailbox is a gateway</li> </ul>
Type	Specifies the type of gateway. Activated when the <b>This mailbox is a gateway</b> option is selected.
<b>Configure</b>	Accesses the HTTP Gateway Mailbox Properties dialog to enable you to configure properties for the HTTP gateway.
<b>OK</b>	Saves changes; exits dialog.
<b>Cancel</b>	Closes dialog without saving changes.
<b>Help</b>	Accesses online help.

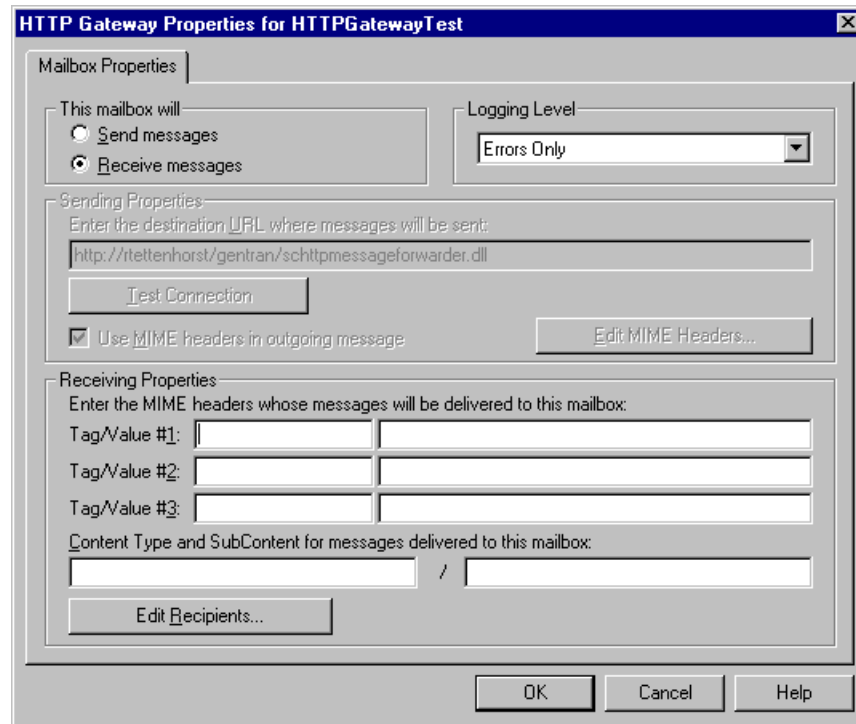
**HTTP Gateway Mailbox Properties dialog box (Send properties) diagram**

This diagram illustrates the HTTP Gateway Mailbox Properties dialog box with the Send option selected.



### HTTP Gateway Mailbox Properties dialog box (Receive properties) diagram

This diagram illustrates the HTTP Gateway Mailbox Properties dialog box with the Receive option selected.



### HTTP Gateway Mailbox Properties dialog box parts and functions

This table describes the parts of the HTTP Gateway Mailbox Properties dialog box and their functions.

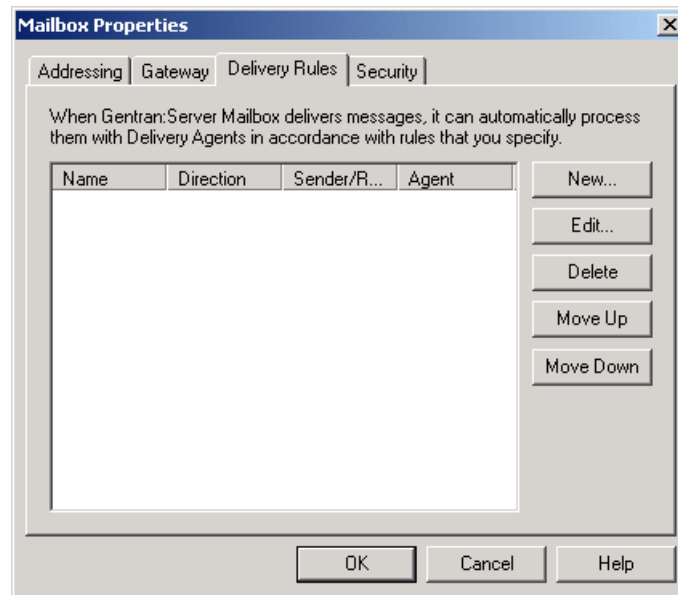
Part	Function
This mailbox will	Indicates whether the mailbox sends or receives messages. Options are: <ul style="list-style-type: none"> <li>Send messages</li> <li>Receive messages</li> </ul>
Logging Level	Specifies the level of logging to use when receiving and forwarding messages. The valid values are: <ul style="list-style-type: none"> <li>Errors Only</li> <li>Error and Warning</li> <li>Detailed</li> </ul>
Enter the destination URL where messages will be sent	Contains the URL where the outgoing message will be sent. <p><b>Note</b> This box is only activated when you select “Send messages.”</p> <p style="text-align: right; color: green;">(Continued on next page)</p>



<b>(Contd) Part</b>	<b>Function</b>
<b>Test Connection</b>	Verifies that the system is able to connect to the destination URL.  <b>Note</b> This box is only activated when you select “Send messages.”
Use MIME headers in outgoing message	Indicates (if selected) that a set of MIME headers will be used to package and send the outgoing message. These MIME headers are prepended verbatim to the start of the outgoing message before it is posted.  <b>Note</b> This box is only activated when you select “Send messages.”
<b>Edit MIME Headers</b>	Accesses the Edit MIME Headers dialog box, which enables you to type a set of MIME headers which will be used to package and send the outgoing message. These MIME headers are prepended verbatim to the start of the outgoing message before it is posted.  <b>Note</b> This box is only activated when you select “Send messages.”
Enter the MIME headers whose messages will be delivered to this mailbox	Contains up to three MIME header tag/value pairs that the incoming message must match before the system will place the incoming message in this mailbox.  <b>Notes</b> <ul style="list-style-type: none"> <li>• All tag/value matching is case-insensitive.</li> <li>• These boxes are only activated when you select “Receive messages.”</li> </ul>
Content Type and SubContent for messages delivered to this mailbox	Specifies the content type and subcontent type to use when delivering a message from this mailbox to the configured recipients.  <b>Note</b> This box is only activated when you select “Receive messages.”
<b>Edit Recipients</b>	Accesses the Edit Recipients dialog box to enable you to select recipients for messages received into this mailbox.
<b>OK</b>	Saves changes; exits dialog box.
<b>Cancel</b>	Cancels unsaved changes; exits dialog box.
<b>Help</b>	Launches the online Help system.

### Delivery Rules tab diagram

This diagram illustrates the Delivery Rules tab of the Mailbox Properties dialog box.



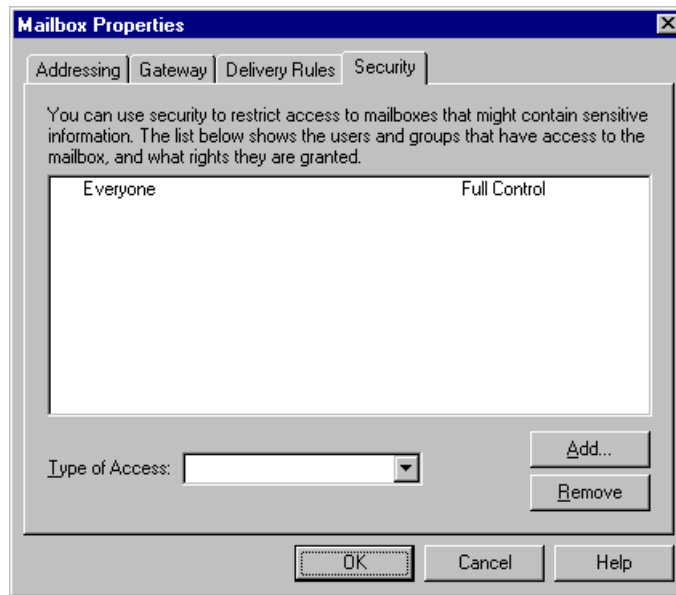
### Delivery Rules tab parts and functions

This table describes the parts of the Delivery Rules tab of the Mailbox Properties dialog box and their functions.

Part	Function
Name	Defines the name of the Delivery Rule.
Direction	Identifies if the rule is run when sending or receiving a message.
Sender/Recipient	Identifies the mailbox of the sender or recipient. The mail address can be specified in addition to the mailbox name.
Agent	Identifies the name of the delivery agent to be run.
New	Enables you to create new Delivery Rules.
Edit	Enables you to edit existing Delivery Rules.
Delete	Enables you to delete Delivery Rules.
Move Up	Moves the selected Delivery Rule up in the processing order.
Move Down	Moves the selected Delivery Rule down in the processing order.
OK	Saves changes; exits dialog.
Cancel	Closes dialog without saving changes.
Help	Accesses online help.

**Security tab diagram**

This diagram illustrates the Security tab of the Mailbox Properties dialog box.



**Security tab parts and functions**

This table describes the parts of the Security tab of the Mailbox Properties dialog box and their functions.

Part	Function
(User list)	Defines users and groups that have access to mailbox.
Type of Access	Designates level at which a user can interact with a mailbox. Values are: <ul style="list-style-type: none"> <li>▶ Full control</li> <li>▶ Read</li> <li>▶ Write</li> </ul>
<b>Add</b>	Enables you to grant users or groups mailbox access.
<b>Remove</b>	Enables you to remove user or group mailbox access.
<b>OK</b>	Saves changes; exits dialog.
<b>Cancel</b>	Closes dialog without saving changes.
<b>Help</b>	Accesses online help.



## Procedures

### Configuration process

#### HTTP Gateway process

This table lists the stages in configuring communications for use with HTTP Gateway.

Stage	Description
1	<p>Install the Gentran:Server HTTP Gateway.</p> <p><b>Reference</b> Refer to the Gentran:Server <i>Options Pack Installation Card</i> for more information.</p>
2	<p>Create the HTTP Gateway Mailboxes that you intend to use.</p> <p><b>Reference</b> See <i>How to Create HTTP Gateway Mailboxes</i> on page 2 - 12 for more information.</p> <p><b>Note</b> When you upgrade your Gentran:Server for RosettaNet installation, the upgrade program creates an outbound HTTP Gateway mailbox for each outbound relationship in the current system. The name of the new mailbox incorporates the “to” and “from” partner information in the communications configuration table entry, and you are required to manually configure your partners and/or interchanges to use the new mailboxes.</p> <p>The upgrade creates the mailboxes needed for the inbound flow, however you are required to manually create and configure the IIS virtual directory necessary for inbound HTTP/HTTPS communications.</p>
3	<p>You need to manually set up one virtual directory for the HTTP Gateway. The actual directory for this virtual directory should be the your Gentran:Server Bin directory (usually c:\gensrvnt\bin). You must set the access permissions for this virtual directory to: <b>Read, Run scripts, and Execute</b>.</p> <p>For the HTTP Gateway to work properly with IIS 6.0, the scdeliveryquery.dll file must be allowed in the ISAPI Web Service Extensions.</p> <p><b>Reference</b> Refer to your Microsoft IIS documentation for more information on creating this virtual directory.</p> <p style="text-align: right;">(Continued on next page)</p>

<b>(Contd) Stage</b>	<b>Description</b>
4	<p>If you are running the HTTP Gateway in a Single Workstation environment in which SQL Server is your database, you must add the following user to your GentranDatabase: IWAM_pcName. You must also manually grant this user SELECT access to the DeliveryQuery_tb database table. You do not need to grant any other access to this ID.</p> <p><b>Example</b> If the machine name is “GENSYS,” the IWAM_pcName user is “IWAM_GENSYS” (no quotes).</p> <p><b>Reference</b> See your SQL Server documentation for more information on how to perform these tasks.</p>
5	<p>If you are running the HTTP Gateway in a Distributed System environment in which SQL Server is your database, you must edit the security properties for the virtual directory to give “anonymous access” to the Domain ID that has access to the machine on which your SQL Server GentranDatabase resides.</p> <p><b>Reference</b> See your Microsoft documentation for more information on how to perform these tasks.</p>
6	<p>If you want to retain messages which do not contain recognizable MIME header information or which are missing MIME header information, create a default mailbox for that purpose.</p> <p><b>Note</b> By default, any message which does not contain MIME header information or which contain unrecognized MIME header information will be discarded. If you want to keep these type of messages, you must also create an HTTP Gateway mailbox and set the three MIME header tag/value pairs to null strings. Then, the HTTP Gateway will attempt to find this mailbox and deliver to it any message with unrecognized or missing MIME header information.</p> <p><b>Reference</b> See <i>Creating a default mailbox to receive messages with missing or unrecognizable MIME header information</i> on page 2 - 16 for more information.</p>

## How to Create HTTP Gateway Mailboxes

### Introduction

You must create HTTP Gateway Mailboxes for incoming and outgoing messages, if you plan to receive and send messages through this gateway.

### Creating a mailbox to send messages via HTTP

Use this procedure to create HTTP Gateway Mailboxes to send messages via HTTP.

Step	Action
1	Start the <b>Mailbox Server Manager</b> .
2	Select the <b>Mailboxes</b> folder icon.
3	Right-click, and select <b>Create</b> from the short-cut menu.  <b>System Response</b> The system displays the Create Mailbox Wizard dialog box.
4	Type the name and description of the mailbox you are creating and click <b>Next</b> twice.  <b>System Response</b> The system displays a dialog asking whether you want to use the mailbox as a gateway to another messaging system.
5	Select <b>Yes, use this mailbox as a gateway</b> .
6	Select <b>HTTP Gateway</b> from the list and click <b>Next</b> to advance the wizard.  <b>System Response</b> The system displays the Create Mailbox Wizard - Summary dialog box.
7	Is the information that you entered correct? <ul style="list-style-type: none"> <li>▶ If <i>yes</i>, click <b>Finish</b> and continue with the next step.</li> <li>▶ If <i>no</i>, click <b>Back</b> and correct the information. Then, continue with the next step.</li> </ul> <b>System Response</b> The system displays the Mailbox Properties dialog box (Addressing tab).  <b>Note</b> If you attempt to create a mailbox and the data store is missing, the system generates an error message box informing you that the mailbox cannot be created. Click <b>OK</b> to exit the message box and click <b>Cancel</b> to exit the Create Mailbox Wizard.
8	Select the <b>Gateway</b> tab.  <b>System response</b> The system displays the gateway information.

(Continued on next page)

<b>(Contd) Step</b>	<b>Action</b>
9	Click <b>Configure</b> .  <b>System response</b> The system displays the HTTP Gateway Mailbox Properties dialog box.
10	Verify that the <b>Send message</b> option is selected in the “This mailbox will” section.
11	From the <b>Logging Level</b> list, select the logging level.
12	In the <b>Enter the destination URL where messages will be sent</b> box, type the URL where the outgoing message will be sent.
13	Click <b>Test Connection</b> .  <b>System response</b> The system verifies that it is able to connect to the destination URL, and prompts you with a message stating its success (click <b>OK</b> ) or failure (click <b>OK</b> and then repeat step 13 with another URL).
14	Do you want to use MIME headers in outgoing messages?  <ul style="list-style-type: none"> <li>▶ If <i>yes</i>, select the <b>Use MIME headers in outgoing messages</b> check box and continue with the next step.</li> <li>▶ If <i>no</i>, continue with Step 17.</li> </ul>
15	Click <b>Edit MIME Headers</b> .  <b>System response</b> The system displays the Edit MIME Headers dialog box.
16	Type a set of MIME headers which will be used to package and send the outgoing message and click <b>OK</b> .  <b>Note</b> These MIME headers are prepended verbatim to the start of the outgoing message before it is posted.
17	Click <b>OK</b> to save changes and exit the HTTP Gateway Mailbox Properties dialog box.

### Creating a mailbox to receive messages via HTTP

Use this procedure to create HTTP Gateway Mailboxes to receive messages via HTTP.

Step	Action
1	Start the <b>Mailbox Server Manager</b> .
2	Select the <b>Mailboxes</b> folder icon.
3	Right-click, and select <b>Create</b> from the short-cut menu.  <b>System Response</b> The system displays the Create Mailbox Wizard dialog box.
4	Type the name and description of the mailbox you are creating and click <b>Next</b> twice.  <b>System Response</b> The system displays a dialog asking whether you want to use the mailbox as a gateway to another messaging system.
5	Select <b>Yes, use this mailbox as a gateway</b> .
6	Select <b>HTTP Gateway</b> from the list and click <b>Next</b> to advance the wizard.  <b>System Response</b> The system displays the Create Mailbox Wizard - Summary dialog box.
7	Is the information that you entered correct? <ul style="list-style-type: none"> <li>▶ If <i>yes</i>, click <b>Finish</b> and continue with the next step.</li> <li>▶ If <i>no</i>, click <b>Back</b> and correct the information. Then, continue with the next step.</li> </ul> <b>System Response</b> The system displays the Mailbox Properties dialog box (Addressing tab).
8	Select the <b>Gateway</b> tab.  <b>System response</b> The system displays the gateway information.
9	Click <b>Configure</b> .  <b>System response</b> The system displays the HTTP Gateway Mailbox Properties dialog box.
10	Verify that the <b>Receive message</b> option is selected in the “This mailbox will” section.
11	In the <b>Enter the MIME headers whose message will be delivered to this mailbox</b> section, type up to three MIME header tag/value pairs that the incoming message must match before the system will place the incoming message in this mailbox.  <p style="text-align: right;">(Continued on next page)</p>



<b>(Contd) Step</b>	<b>Action</b>
12	In the <b>Content Type</b> box, type the content type to use when delivering a message from this mailbox to its recipients.
13	In the <b>SubContent Type</b> box, type the subcontent type to use when delivering a message from this mailbox to its recipients.
14	Click <b>Edit Recipients</b> .  <b>System Response</b> The system displays the Edit Recipients dialog box.
15	Select a recipient from the list or enter the name in the box.  <b>Note</b> You can also select a predefined distribution list.  <b>Reference</b> See the <i>Communications User's Guide</i> for information on how to create a Distribution List.  <b>System Response</b> The system displays the Email Address dialog box.
16	Do you want to specify an E-mail address? <ul style="list-style-type: none"> <li>▶ If <i>yes</i>, enter the E-mail address in the box. Click <b>Add</b> and then click <b>OK</b>.</li> <li>▶ If <i>no</i>, click <b>Cancel</b>.</li> </ul> <b>System Response</b> The system returns to the Edit Recipients dialog box.
17	Do you want to add more recipients? <ul style="list-style-type: none"> <li>▶ If <i>yes</i>, repeat Steps 14 through 17.</li> <li>▶ If <i>no</i>, continue with the next step.</li> </ul>
18	Click <b>OK</b> to return to the HTTP Gateway Mailbox Properties dialog box and continue with the next step.
19	Click <b>OK</b> to save changes and exit the HTTP Gateway Mailbox Properties dialog box.
20	Click <b>OK</b> to exit the Mailbox Properties dialog box.

**Creating a default mailbox to receive messages with missing or unrecognizable MIME header information**

Use this procedure if you want to create a default HTTP Gateway Mailbox to receive messages via HTTP which the system would otherwise discard because they are either missing MIME header information or contain unrecognizable MIME header information.

Step	Action
1	Start the <b>Mailbox Server Manager</b> .
2	Select the <b>Mailboxes</b> folder icon.
3	Right-click, and select <b>Create</b> from the short-cut menu.  <b>System Response</b> The system displays the Create Mailbox Wizard dialog box.
4	Type the name and description of the mailbox you are creating and click <b>Next</b> twice.  <b>System Response</b> The system displays a dialog asking whether you want to use the mailbox as a gateway to another messaging system.
5	Select <b>Yes, use this mailbox as a gateway</b> .
6	Select <b>HTTP Gateway</b> from the list and click <b>Next</b> to advance the wizard.  <b>System Response</b> The system displays the Create Mailbox Wizard - Summary dialog box.
7	Is the information that you entered correct? <ul style="list-style-type: none"> <li>▶ If <i>yes</i>, click <b>Finish</b> and continue with the next step.</li> <li>▶ If <i>no</i>, click <b>Back</b> and correct the information. Then, continue with the next step.</li> </ul> <b>System Response</b> The system displays the Mailbox Properties dialog box (Addressing tab).
8	Select the <b>Gateway</b> tab.  <b>System response</b> The system displays the gateway information.
9	Click <b>Configure</b> .  <b>System response</b> The system displays the HTTP Gateway Mailbox Properties dialog box.
10	Verify that the <b>Receive message</b> option is selected in the “This mailbox will” section.

(Continued on next page)

<b>(Contd) Step</b>	<b>Action</b>
11	<p>In the <b>Enter the MIME headers whose message will be delivered to this mailbox</b> section, type null strings in each of the three MIME header tag/value pairs.</p> <p><b>Note</b> This ensures that the HTTP Gateway will attempt to find this mailbox and deliver to it any message with unrecognized or missing MIME header information.</p>
12	<p>In the <b>Content Type</b> box, type the content type to use when delivering a message from this mailbox to its recipients.</p>
13	<p>In the <b>SubContent Type</b> box, type the subcontent type to use when delivering a message from this mailbox to its recipients.</p>
14	<p>Click <b>Edit Recipients</b>.</p> <p><b>System Response</b> The system displays the Edit Recipients dialog box.</p>
15	<p>Select a recipient from the list or enter the name in the box.</p> <p><b>Note</b> You can also select a predefined distribution list.</p> <p><b>Reference</b> See the <i>Communications User's Guide</i> for more information.</p> <p><b>System Response</b> The system displays the Email Address dialog box.</p>
16	<p>Do you want to specify an E-mail address?</p> <ul style="list-style-type: none"> <li>▶ If <i>yes</i>, enter the E-mail address in the box. Click <b>Add</b> and then click <b>OK</b>.</li> <li>▶ If <i>no</i>, click <b>Cancel</b>.</li> </ul> <p><b>System Response</b> The system returns to the Edit Recipients dialog box.</p>
17	<p>Do you want to add more recipients?</p> <ul style="list-style-type: none"> <li>▶ If <i>yes</i>, repeat Steps 14 through 17.</li> <li>▶ If <i>no</i>, continue with the next step.</li> </ul>
18	<p>Click <b>OK</b> to return to the HTTP Gateway Mailbox Properties dialog box and continue with the next step.</p>
19	<p>Click <b>OK</b> to save changes and exit the HTTP Gateway Mailbox Properties dialog box.</p> <p><b>System response</b> The system prompts you to confirm the creation of this default mailbox.</p>
20	<p>Click <b>OK</b> to exit the Mailbox Properties dialog box.</p>

## How to Modify Mailbox Properties

**Introduction** This section describes how to modify mailbox properties that were created using the Create Mailbox Wizard.

**Procedure** Use this procedure to modify mailbox properties.

Step	Action	
1	Start the <b>Mailbox Server Manager</b> .	
2	Expand the <b>Mailboxes</b> folder.	
3	Select the mailbox for which you want to add or modify properties.	
4	Right-click and select <b>Properties</b> from the shortcut menu.  <b>System Response</b> The system displays the Mailbox Properties dialog box (Addressing tab).	
5	Use this table to determine your next step.	
	<b>IF you want to change the mailbox...</b>	<b>THEN click this tab...</b>
	<ul style="list-style-type: none"> <li>▶ name</li> <li>▶ Gentrans E-mail address</li> </ul>	Addressing
	<ul style="list-style-type: none"> <li>▶ Gateway properties</li> <li>▶ Send or Receive configuration properties</li> </ul>	Gateway
	delivery rules	Delivery Rules
	user security permissions	Security
6	Make the appropriate modifications and then click <b>OK</b> to save changes and exit the dialog box.	

---

# HTTP Gateway Database Table Layout

---

**Contents**

- ▶ Introduction ..... A - 2
  - ▶ DeliveryQuery\_tb ..... A - 3
-

## Introduction

---

### **In this appendix**

This appendix contains a reference for the HTTP Gateway database table (DeliveryQuery\_tb). This enables you to quickly and easily refer to information on the purpose of the table, when the records in the table are created, updated, and deleted, and the usage of each field in the table.

Gentran:Server enables you to access its relational database tables by using your database management system. This gives you the capability to query the database tables.

### **Warning**

The relationships between the tables in Gentran:Server are extremely complex, and therefore we strongly recommend that you do not update these tables.

---

## DeliveryQuery\_tb

**Introduction** The DeliveryQuery\_tb stores the mapping of MIME header information to Gentran:Server mailboxes.

**Table** The following table contains the field information for the DeliveryQuery\_tb.

Field Name	Type	Size	Usage
MailboxName	string	125	This indicates the Gentran:Server Mailbox associated with the MIME header tag/value pairs specified below.
MimeTag1	string	255	This specifies the MIME header tag #1.
MimeValue1	string	255	This specifies the MIME header value #1.
MimeTag2	string	255	This specifies the MIME header tag #2.
MimeValue2	string	255	This specifies the MIME header value #2.
MimeTag3	string	255	This specifies the MIME header tag #3.
MimeValue3	string	255	This specifies the MIME header value #3.
Content	string	255	This indicates the content type for this mailbox mapping.
SubContent	string	255	This indicates the content subtype for this mailbox mapping.





---

# HTTP Gateway Error Messages

---

<b>Contents</b>	• Introduction . . . . .	B - 2
	<b>HTTP Gateway Error Messages . . . . .</b>	<b>B - 3</b>
	• Delivery Query Messages . . . . .	B - 3
	• HTTP Gateway Error Messages . . . . .	B - 6
	• SCMailData Error Messages . . . . .	B - 8

---

## Introduction

### In this appendix

This appendix explains HTTP Gateway error messages and how to determine the action you should take when you receive an error message.

### Where error messages are located

The HTTP Gateway error messages and other informational messages are noted on the Audit Log,

#### References

- See “Using the Audit Notification System” in the *Administration Guide* for more information about the Audit Log.
- See the “Error Messages” appendix in the *Administration Guide* for more information about other Gentran:Server error messages.
- See the “Error Messages” appendix in the *Gentran:Server for RosettaNet User’s Guide* for more information on RosettaNet-specific error messages.

The informational messages are dependent on the context of the program, and are intended to be self-explanatory.

### Error message numbers

The types of error messages that HTTP Gateway uses are the following:

- **DeliveryQuery** occur if the error occurs on delivery.
- **HTTP Gateway** occur if the error was noted by the HTTP Gateway.
- **SCMailData** occur if the error was noted by the SCMailData DLL.

### Source and component numeric values

This table lists the numeric values for the HTTP Gateway message source and component values.

Source	Component
16 - Internet Gateways	<ul style="list-style-type: none"> <li>• 1 - Delivery Query</li> <li>• 2 - HTTP Gateway</li> <li>• 4 - SCMailData</li> </ul>

# HTTP Gateway Error Messages

## Delivery Query Messages

**Introduction** This topic provides you with the error messages that DeliveryQuery may write to the Gentran:Server Audit Log.

**Reference**

See “Using the Audit Notification System” in the *Administration Guide* for more information on the audit log.

**Messages** The DeliveryQuery error messages are listed below by the message number and the error message text.

Msg ID	Message Text	Explanation/Your Action
16-1-4	Unable to read in incoming post data from [host sending the HTTP post request].	<p><b>Explanation</b> Unable to read POST data from IIS, so the message is discarded.</p> <p><b>Your Action</b> Stop and start IIS services.</p>
16-1-5	The incoming post request data from [host sending the HTTP post request].	<p><b>Explanation</b> The HTTP post request is empty.</p> <p><b>Your Action</b> None.</p>
16-1-8	Memory allocation error occurred. Error code = [error code number]. Delivery Query processing aborted.	<p><b>Explanation</b> Fatal error.</p> <p><b>Your Action</b> Stop and restart IIS services. You may also need to reboot the machine.</p> <p><b>Reference</b> See your Windows documentation for more information on stopping and restarting services.</p> <p style="text-align: right;">(Continued on next page)</p>

<b>(Contd) Msg ID</b>	<b>Message Text</b>	<b>Explanation/Your Action</b>
16-1-13	Unable to open DELIVERYQUERY_TB record set	<p><b>Explanation</b> A database error occurred while opening the table.</p> <p><b>Your Action</b> Check the Gentran database and make sure this table exists. Also, check the permissions for the table.</p> <p><b>Reference</b> See the documentation for your database management system for more information.</p>
16-1-14	Database exception occurred while opening or querying DELIVERYQUERY_TB record set. Error = [exception details].	<p><b>Explanation</b> A database error occurred.</p> <p><b>Your Action</b> Check the Gentran database and make sure this table exists. The parameter in the message will give further information.</p> <p><b>Reference</b> See the documentation for your database management system for more information.</p>
16-1-15	Memory exception occurred while opening or querying DELIVERYQUERY_TB record set.	<p><b>Explanation</b> Fatal error.</p> <p><b>Your Action</b> At a minimum, the IIS services should be stopped and restarted. A restart of the Gentran services may also be required.</p> <p><b>Reference</b> See your Windows documentation for more information on stopping and restarting services.</p> <p style="text-align: right; color: green;">(Continued on next page)</p>

<b>(Contd) Msg ID</b>	<b>Message Text</b>	<b>Explanation/Your Action</b>
16-1-16	There is no Gentran:Server mailbox configured to handle the incoming message. The incoming message will be discarded.	<p><b>Explanation</b> There is no Gentran:Server HTTP Gateway mailbox configured to receive the incoming message.</p> <p><b>Your Action</b> Configure an HTTP gateway.</p> <p><b>Reference</b> See <i>How to Create HTTP Gateway Mailboxes</i> on page 2 - 12 for more information.</p>
16-1-22	An error occurred while sending the incoming message to Gentran:Server mailbox [mailbox name]. Error = [error text]. The message is not sent.	<p><b>Explanation</b> Unable to deliver the incoming HTTP POST to the destination mailbox.</p> <p><b>Your Action</b> Make sure the Gentran:Server Mailbox service is running. Also, make sure the destination mailbox exists.</p> <p><b>References</b></p> <ul style="list-style-type: none"> <li>▶ See the <i>Administration Guide</i> for more information on starting Gentran:Server services.</li> <li>▶ See <i>How to Modify Mailbox Properties</i> on page 2 - 18 for more information on verifying the destination mailbox.</li> </ul>

# HTTP Gateway Error Messages

**Introduction** This topic provides you with the error messages that the HTTP Gateway may write to the Gentran:Server Audit Log.

## Reference

See “Using the Audit Notification System” in the *Administration Guide* for more information on the audit log.

**Messages** The HTTP Gateway error messages are listed below by the message number and the error message text.

Msg ID	Message Text	Explanation/Your Action
16-2-2	The outgoing message in the mailbox message attachment is missing or has a length of 0. HTTP Gateway outbound processing aborted.	<p><b>Explanation</b> There is no data to process.</p> <p><b>Your Action</b> None.</p>
16-2-3	Memory allocation error occurred. HTTP Gateway outbound processing aborted.	<p><b>Explanation</b> Fatal error.</p> <p><b>Your Action</b> Stop and start the Gentran services. May also require a reboot of the PC.</p> <p><b>Reference</b> See your Windows documentation for more information on stopping and restarting services.</p>
16-2-4	Unable to read in the entire mailbox message attachment. Bytes read = [number of bytes read], Bytes available = [number of bytes available]. HTTP Gateway outbound processing aborted.	<p><b>Explanation</b> Fatal error.</p> <p><b>Your Action</b> Restart of IIS services and then have your trading partner resend the message.</p> <p><b>Reference</b> See your Windows documentation for more information on stopping and restarting services.</p> <p style="text-align: right;">(Continued on next page)</p>

<b>(Contd) Msg ID</b>	<b>Message Text</b>	<b>Explanation/Your Action</b>
16-2-5	HTTP POST to [destination URL] of message #[mailbox message number] failed. HTTP status code = [HTTP status code].	<p><b>Explanation</b> The attempt to send HTTP POST failed.</p> <p><b>Your Action</b> Check destination URL to see if it is valid and online.</p> <p><b>Reference</b> See <i>Test Connection</i> on page 2 - 7 for more information on checking the destination URL.</p>
16-2-9	Unable to send message #[mailbox message number] to the recipients configured for [HTTP gateway mailbox name]. Error = [Mailbox Server error code].	<p><b>Explanation</b> Message delivery to recipient list failed.</p> <p><b>Your Action</b> Check the mailbox configuration.</p> <p><b>Reference</b> See <i>How to Modify Mailbox Properties</i> on page 2 - 18 for more information on checking the mailbox configuration.</p>

## SCMailData Error Messages

**Introduction** This topic provides you with the error messages that the SCSMailData program may write to the Gentran:Server Audit Log.

### Reference

See “Using the Audit Notification System” in the *Administration Guide* for more information on the audit log.

**Messages** The SCSMailData program error messages are listed below by the message number and the error message text.

Msg ID	Message Text	Explanation/Your Action
16-4-1	Unable to add recipient #[recipient] to message #[mailbox message number]. Error = [error text]. The message will not be sent from [mailbox name] to its recipients.	<p><b>Explanation</b> Message could not be sent to final recipient due to Mailbox Server Manager error.</p> <p><b>Your Action</b> Check the mailbox configuration.</p> <p><b>Reference</b> See <i>How to Modify Mailbox Properties</i> on page 2 - 18 for more information on checking the mailbox configuration.</p>
16-4-2	Unable to open message #[mailbox message number]. Error = [error text]. The message will not be sent from [source mailbox name] to its recipients.	<p><b>Explanation</b> Message could not be sent to final recipient due to Mailbox Server Manager error.</p> <p><b>Your Action</b> Restart your Gentran:Server services.</p> <p><b>Reference</b> See the <i>Administration Guide</i> for more information on starting Gentran:Server services.</p>
16-4-3	Unable to remove recipients from message #[mailbox message number]. Error = [error message text]. The message will not be sent from [source mailbox name] to its recipients.	<p><b>Explanation</b> Message could not be sent to final recipient due to Mailbox Server Manager error.</p> <p><b>Your Action</b> Restart your Gentran:Server services.</p> <p><b>Reference</b> See the <i>Administration Guide</i> for more information on starting Gentran:Server services.</p> <p style="text-align: right;">(Continued on next page)</p>



<b>(Contd) Msg ID</b>	<b>Message Text</b>	<b>Explanation/Your Action</b>
16-4-4	Unable to modify message #[mailbox message number]. Error = [error message text]. The message will not be sent from [source mailbox name] to its recipients.	<p><b>Explanation</b> Message could not be sent to final recipient due to Mailbox Server Manager error.</p> <p><b>Your Action</b> Restart your Gentran:Server services.</p> <p><b>Reference</b> See the <i>Administration Guide</i> for more information on starting Gentran:Server services.</p>
16-4-5	Unable to open mailbox [mailbox name]. Error = [error text].	<p><b>Explanation</b> Mailbox could not be opened.</p> <p><b>Your Action</b> Check the mailbox configuration.</p> <p><b>Reference</b> See <i>How to Modify Mailbox Properties</i> on page 2 - 18 for more information on checking the mailbox configuration.</p>
16-4-8	Unable to open or create and open the intermediate mailbox [mailbox name].	<p><b>Explanation</b> Mailbox could not be opened.</p> <p><b>Your Action</b> Check the mailbox configuration.</p> <p><b>Reference</b> See <i>How to Modify Mailbox Properties</i> on page 2 - 18 for more information on checking the mailbox configuration.</p>
16-4-10	Unable to open [mailbox name] mailbox.	<p><b>Explanation</b> Mailbox could not be opened.</p> <p><b>Your Action</b> Check the mailbox configuration.</p> <p><b>Reference</b> See <i>How to Modify Mailbox Properties</i> on page 2 - 18 for more information on checking the mailbox configuration.</p> <p style="text-align: right; color: green;">(Continued on next page)</p>

<b>(Contd) Msg ID</b>	<b>Message Text</b>	<b>Explanation/Your Action</b>
16-4-12	Gentran:Server mailbox service logon failed. Mercury ID/password problem. User needs to check Mercury service configuration.	<p><b>Explanation</b> Gentran:Server Mailbox service ID or password problem.</p> <p><b>Your Action</b> Check the configuration of the ID and password on the Gentran:Server Mailbox service.</p> <p><b>Reference</b> See your Windows documentation for more information on reconfiguring services.</p>
16-4-13	Gentran:Server mailbox service is not running.	<p><b>Explanation</b> The Gentran:Server Mailbox service is not running.</p> <p><b>Your Action</b> Restart the Mailbox service.</p> <p><b>Reference</b> See your Windows documentation for more information.</p>
16-4-14	Unable to open intermediate mailbox and destination mailbox [mailbox name]. Error = [error code].	<p><b>Explanation</b> Mailbox could not be opened.</p> <p><b>Your Action</b> Check the mailbox configuration.</p> <p><b>Reference</b> See <i>How to Modify Mailbox Properties</i> on page 2 - 18 for more information on checking the mailbox configuration.</p>
16-4-17	MessCreate failed when creating new mailbox message for incoming data. Error = [error text].	<p><b>Explanation</b> Unable to create new Mercury mailbox message.</p> <p><b>Your Action</b> Restart the Gentran services. You may need to call support.</p> <p><b>Reference</b> See the <i>Administration Guide</i> for more information on starting Gentran:Server services.</p> <p style="text-align: right; color: green;">(Continued on next page)</p>

<b>(Contd) Msg ID</b>	<b>Message Text</b>	<b>Explanation/Your Action</b>
16-4-18	AddRecipient failed when adding a recipient for the new mailbox message. Error = [error text].	<p><b>Explanation</b> Unable to create new Mercury mailbox message.</p> <p><b>Your Action</b> Restart the Gentran services. You may need to call support.</p> <p><b>Reference</b> See the <i>Administration Guide</i> for more information on starting Gentran:Server services.</p>
16-4-19	MessSend failed to send the new mailbox message to [mailbox name]. Error = [error text]	<p><b>Explanation</b> Unable to create new Mercury mailbox message.</p> <p><b>Your Action</b> Restart the Gentran services. You may need to call support.</p> <p><b>Reference</b> See the <i>Administration Guide</i> for more information on starting Gentran:Server services.</p>
16-4-20	[mailbox name] failed. Error = [error text]	<p><b>Explanation</b> General error message for debugging purposes.</p> <p><b>Your Action</b> None.</p>
16-4-22	CreateMailAttachment failed to attach the message data to the new mail message. Error = [error text].	<p><b>Explanation</b> Unable to create new Mercury mailbox message attachment.</p> <p><b>Your Action</b> Restart the Gentran services. You may need to call support.</p> <p><b>Reference</b> See the <i>Administration Guide</i> for more information on starting Gentran:Server services.</p>

