

Gentran:Server® for Windows®

**SAP Gateway
Configuration Guide**

Version 5.2

Sterling Commerce
An IBM Company

Copyright Notice

Gentran:Server for Windows

© Copyright 1995–2008
Sterling Commerce, Inc.
ALL RIGHTS RESERVED

Sterling Commerce Software Trade Secret Notice

THE GENTRAN:SERVER FOR WINDOWS SOFTWARE ("STERLING COMMERCE SOFTWARE") IS THE CONFIDENTIAL AND TRADE SECRET PROPERTY OF STERLING COMMERCE, INC., ITS AFFILIATED COMPANIES OR ITS OR THEIR LICENSORS, AND IS PROVIDED UNDER THE TERMS OF A LICENSE AGREEMENT. NO DUPLICATION OR DISCLOSURE WITHOUT PRIOR WRITTEN PERMISSION. RESTRICTED RIGHTS.

This documentation, the Sterling Commerce Software it describes, and the information and know-how they contain constitute the proprietary, confidential and valuable trade secret information of Sterling Commerce, Inc., its affiliated companies or its or their licensors, and may not be used for any unauthorized purpose, or disclosed to others without the prior written permission of the applicable Sterling Commerce entity. This documentation and the Sterling Commerce Software that it describes have been provided pursuant to a license agreement that contains prohibitions against and/or restrictions on their copying, modification and use. Duplication, in whole or in part, if and when permitted, shall bear this notice and the Sterling Commerce, Inc. copyright notice.

As and when provided to any governmental entity, government contractor or subcontractor subject to the FARs, this documentation is provided with RESTRICTED RIGHTS under Title 48 CFR 52.227-19. Further, as and when provided to any governmental entity, government contractor or subcontractor subject to DFARs, this documentation and the Sterling Commerce Software it describes are provided pursuant to the customary Sterling Commerce license, as described in Title 48 CFR 227-7202 with respect to commercial software and commercial software documentation.

These terms of use shall be governed by the laws of the State of Ohio, USA, without regard to its conflict of laws provisions. If you are accessing the Sterling Commerce Software under an executed agreement, then nothing in these terms and conditions supersedes or modifies the executed agreement.

Product names mentioned herein may be trademarks and/or registered trademarks of their respective companies. Gentran and Gentran:Server are registered trademarks of Sterling Commerce, Inc.

Third Party Software:

Portions of the Sterling Commerce Software may include products, or may be distributed on the same storage media with products, ("Third Party Software") offered by third parties ("Third Party Licensors").

Warranty Disclaimer

This documentation and the Sterling Commerce Software which it describes are licensed either "AS IS" or with a limited warranty, as set forth in the Sterling Commerce license agreement. Other than any limited warranties provided, NO OTHER WARRANTY IS EXPRESSED AND NONE SHALL BE IMPLIED, INCLUDING THE WARRANTIES OF MERCHANTABILITY AND FITNESS FOR USE OR FOR A PARTICULAR PURPOSE. The applicable Sterling Commerce entity reserves the right to revise this publication from time to time and to make changes in the content hereof without the obligation to notify any person or entity of such revisions or changes.

The Third Party Software is provided 'AS IS' WITHOUT ANY WARRANTY AND ANY EXPRESSED OR IMPLIED WARRANTIES, INCLUDING BUT NOT LIMITED TO, THE IMPLIED WARRANTIES OF MERCHANTABILITY, AND FITNESS FOR A PARTICULAR PURPOSE ARE DISCLAIMED. FURTHER, IF YOU ARE LOCATED OR ACCESSING THIS SOFTWARE IN THE UNITED STATES, ANY EXPRESS OR IMPLIED WARRANTY REGARDING TITLE OR NON-INFRINGEMENT ARE DISCLAIMED.

Table of Contents

Preface	About This Guide	
	▶ Introduction	iv
	▶ Description of Contents	v
	▶ Getting Support	vi
Chapter 1	SAP Gateway Overview	
	▶ Overview	1-2
	▶ SAP Gateway	1-3
	▶ SAP Gateway Mailboxes	1-4
	▶ Gateway Message Statuses	1-5
Chapter 2	Configuring Communications	
	▶ Introduction	2-2
	Properties	2-3
	▶ SAP Gateway	2-3
	▶ SAP Server Monitor	2-5
	▶ SAP Gateway Mailbox Properties	2-6
	▶ Mailbox Properties	2-16
	Procedures	2-20
	▶ Configuration process	2-20
	▶ How to Configure Your SAP Gateway	2-21
	▶ How to Create SAP Gateway Mailboxes	2-23
	▶ How to Modify Gateway Mailbox Configuration Properties	2-28
	▶ How to Add or Modify Gateway Mailbox Properties	2-29

Preface



About This Guide

Contents

- ▶ Introductioniv
 - ▶ Description of Contentsv
 - ▶ Getting Supportvi
-



Introduction

Overview This manual contains the tasks you must follow to:

- configure the Gentran:Server SAP Gateway
 - create SAP Gateway mailboxes
-

Intended audience The intended audience for this manual is:

- Gentran:Server system administrators
 - advanced SAP users
-

Prerequisite knowledge The audience using this software should be familiar with:

- Your Microsoft® Operating System
 - Communications protocols
 - SAP functionality
-

Description of Contents

Introduction

This guide is organized into the tasks that you complete when configuring communications for the SAP Gateway.

Organization of chapters

The guide is organized into chapters. A brief description of each chapter's contents follows.

- About This Guide explains the content, organization, and conventions in this guide.
 - SAP Gateway Overview provides a high-level overview of the SAP Gateway.
 - Configuring Communications explains the process for configuring SAP Gateway communications. This chapter also provides the procedures you must follow to configure your SAP Gateway Mailboxes.
-

Getting Support

Introduction The Sterling Commerce Gentran:Server software is supported by trained product support personnel who are available to help you with product questions or concerns.

Note

Gentran:Server Customer Support does not support non-Sterling Commerce products (e.g., SQL Server, Oracle, etc.), but can assist you in configuring non-Sterling Commerce products to work with Gentran:Server.

Phone number For assistance, please refer to your *Getting Started Guide* to determine which support phone number you should use.

Before calling support

To help us provide prompt service, we ask that you do the following:

- Attempt to recreate any problem that you encounter and record the exact sequence of events.
- When you call product support, you should be prepared to provide us with the information below.

Information	Description
Identification	Your company name, your name, telephone number and extension, and the case number (if the question refers to a previously reported issue).
System Configuration	The Gentran:Server version (and any service packs installed) and information about the primary Gentran system controller and all machines experiencing problems, including: the Windows operating system version, amount of memory, available disk space, database version, Microsoft Data Access (MDAC) version, and Internet Explorer version. Also, please describe any recent changes in your hardware, software, or the configuration of your system.
System Data Store	Which machines contain folders in the system data store?
Error Messages	Record the exact wording of any error messages you receive and the point in the software where the error occurred, as well as any log files.
Attempted Solutions	Record any steps that you took attempting to resolve the problem and note all the outcomes, and provide an estimate on how many times the problem occurred and whether it can be reproduced.

Accessing the Sterling Commerce Support Web Site

The Sterling Commerce Customer Support Web Site contains valuable information about getting support for Gentran:Server for Windows, including the:

- scope of support services
- customer support policies
- call prioritizing
- customer support phone directory
- how to create new Support on Demand cases
- how to check the status of Support on Demand cases
- how to add information to Support on Demand cases

The Customer Support Web Site is constantly updated and all Sterling Commerce customers have access to it. This web site also contains the most recent product updates and is a valuable source of product information.

Reference

Refer to the *Getting Started Guide* for information on how to access the Customer Support Web Site.

Documentation

The Customer Support Web Site contains a documentation library, which has the entire Gentran:Server for Windows documentation set. You can download the product manuals in PDF format from this library at any time.

SAP Gateway Overview

Contents

- ▶ Overview 1 - 2
 - ▶ SAP Gateway 1 - 3
 - ▶ SAP Gateway Mailboxes 1 - 4
 - ▶ Gateway Message Statuses 1 - 5
-

Overview

In this chapter

This chapter provides you with a high-level overview of the Gentran:Server SAP Gateway.

What is SAP R/3?

SAP is business application software that includes programs for accounting and controlling, production and materials management, quality management, plant maintenance, sales, distribution, human resources management and project management. These programs can run independently or can combine to function as a single system.

SAP uses the intermediate document (IDoc) interface to communicate data.

What is a Gateway?

Gateways are software components that control the transmission of messages between two parties. The gateway is responsible for using the correct protocols to transfer messages between the sender and receiver. In a paper mail system, the gateway is the letter carrier who moves letters from senders to receivers. The letter carrier ensures that each letter has an address and proper postage before delivering the letter. The letter carrier also transfers the letter using the correct protocol: priority mail, first class, or bulk mail.

You are responsible for defining the properties of the gateways that you use for transferring messages.

What is a Mailbox?

A mailbox stores messages until those messages are transferred to a recipient application. You are responsible for creating mailboxes. When you create mailboxes, you associate the mailbox with an gateway. The properties that you define for each mailbox determine how messages are transferred from or to your application via the gateway.

SAP Gateway

Introduction

The SAP Gateway defines the relationships between the Mailbox Server Manager and the SAP file exchange system.

Supported transfer modes

The SAP Adapter supports two data transfer connection methods:

- Remote Function Call (RFC) - a file-based method for transferring data between the SAP system and the SAP Adapter.
 - Application Link Enabling (ALE) - a memory-based method for transferring data between the SAP system and the SAP Adapter.
-

Configuring the Gateway

You must configure the SAP Gateway before you can begin transferring or receiving messages.

Reference

See Configuring Communications, chapter 2 of this guide, for more information about configuring the SAP Gateway.

SAP Gateway Mailboxes

Introduction

In addition to gateway properties, you must also configure properties for SAP mailboxes. When you configure a mailbox for use with the SAP Gateway, you define the:

- ▶ Transfer mode
- ▶ Recipients
- ▶ Content type for messages and attachments
- ▶ Data mapping properties

Reference

See Configuring Communications, chapter 2 of this guide, for more information about configuring the SAP mailboxes.

Gateway Message Statuses

Introduction

When a message is sent to the SAP Gateway, the message status is changed to “Sent.” When the SAP Gateway submits a process to the SAP server, the message status is changed to “Sent Third-Party.” When the SAP process completes, the message status is changed to “Delivered” (if the process was successful) or to “Delivery Failed” (if the process was unsuccessful.).

Related topic

See “Tracking Messages” in the *Communications User’s Guide* for additional information.

Configuring Communications

Contents	▶ Introduction	2 - 2
	Properties	3
	▶ SAP Gateway	2 - 3
	▶ SAP Server Monitor	2 - 5
	▶ SAP Gateway Mailbox Properties	2 - 6
	▶ Mailbox Properties	2 - 16
	Procedures	22
	▶ Configuration process	2 - 20
	▶ How to Configure Your SAP Gateway	2 - 21
	▶ How to Create SAP Gateway Mailboxes	2 - 23
	▶ How to Modify Gateway Mailbox Configuration Properties	2 - 28
	▶ How to Add or Modify Gateway Mailbox Properties	2 - 29

Introduction

In this chapter This chapter describes the tasks that you must complete to configure your SAP Gateway and SAP Gateway Mailbox.

Key Terms This table describes key terms used in this chapter.

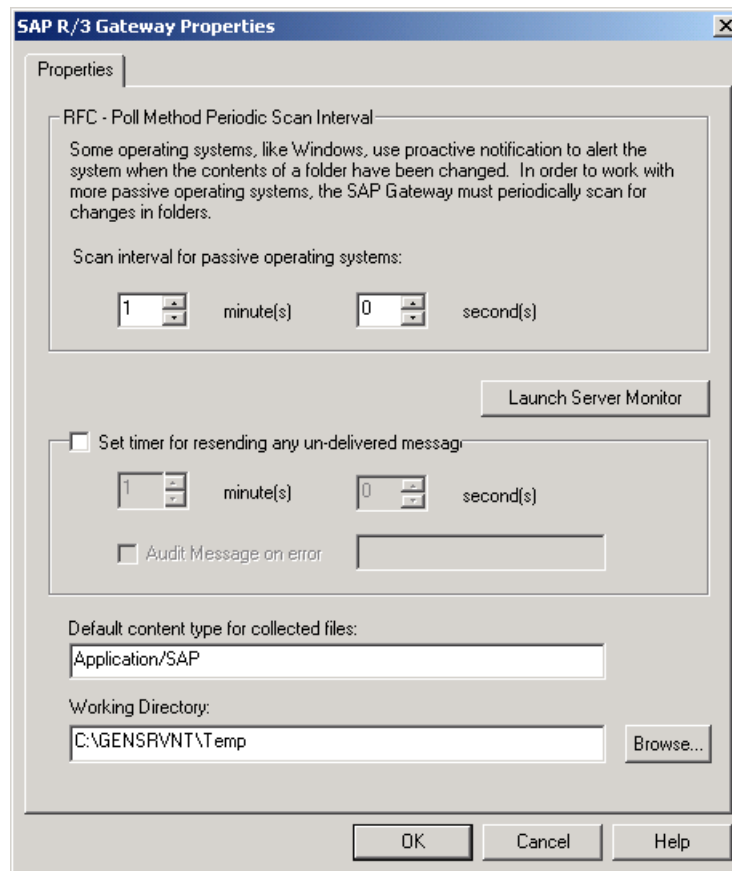
Term	Description
Gateway	Gateways are software components that control the transmission of messages between two parties. The gateway is responsible for using the correct protocols to transfer messages between the sender and receiver.
Mailbox	A folder or set of folders used to store messages.
SAP	A point-to-point file transfer system.

Properties

SAP Gateway

Introduction The SAP Gateway Properties dialog box defines the properties of the SAP Gateway.

SAP Gateway Properties This diagram illustrates the SAP Gateway Properties dialog box.



Parts and functions

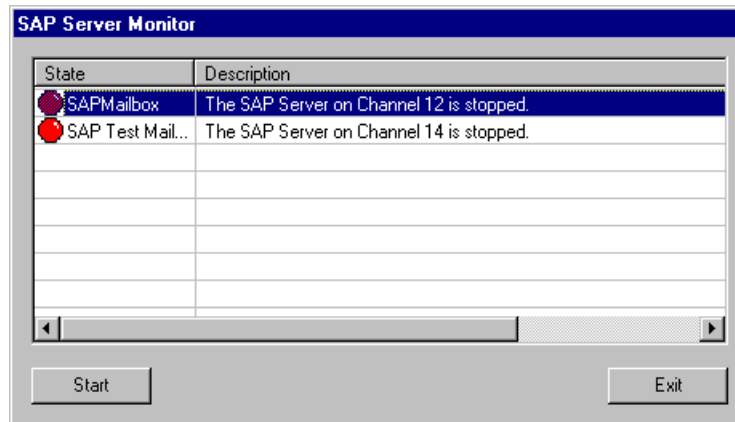
This table describes the parts of the SAP Gateway Properties dialog box and their functions.

Part	Function
Scan interval for passive operating systems minutes/seconds	Specifies the interval at which the contents of the SAP folders are scanned on systems that do not send automatic notifications of changes (passive operating systems). Intervals are defined in the minute(s) and second(s) boxes.
Launch Server Monitor	Accesses the SAP Server Monitor dialog box, which enables you to start the SAP Server.
Set timer for resending any undelivered messages minutes / seconds	Specifies the time interval at which you want the system to resend messages that were not delivered due to a connection loss. This interval can be expressed in: <ul style="list-style-type: none"> ▶ minute(s) ▶ second(s)
Audit Message on error	Specifies an error message number for which you want the system to generate an audit message when messages need to be resent.
Default content type for collected files	Defines the default content type for files collected.
Working Directory	Defines the temporary working directory used with this gateway. The default directory is C:\GENSRVNT\Bin\Temp or click Browse to select another Working Directory location.
Browse	Accesses the Choose Communication Queue dialog box, which allows you to select the appropriate working directory.
OK	Saves changes; exits dialog box.
Cancel	Cancel unsaved changes; exits dialog box.
Help	Launches the online Help system.

SAP Server Monitor

Introduction The SAP Server Monitor enables you to start and monitor the SAP Server.

SAP Server Monitor This diagram illustrates the SAP Server Monitor dialog box.



Parts and functions This table describes the parts of the SAP Server Monitor dialog box and their functions.

Part	Function
(list)	Displays the various SAP Mailbox Servers.
Start	Starts the selected mailbox server.
Exit	Closes the SAP Server Monitor.

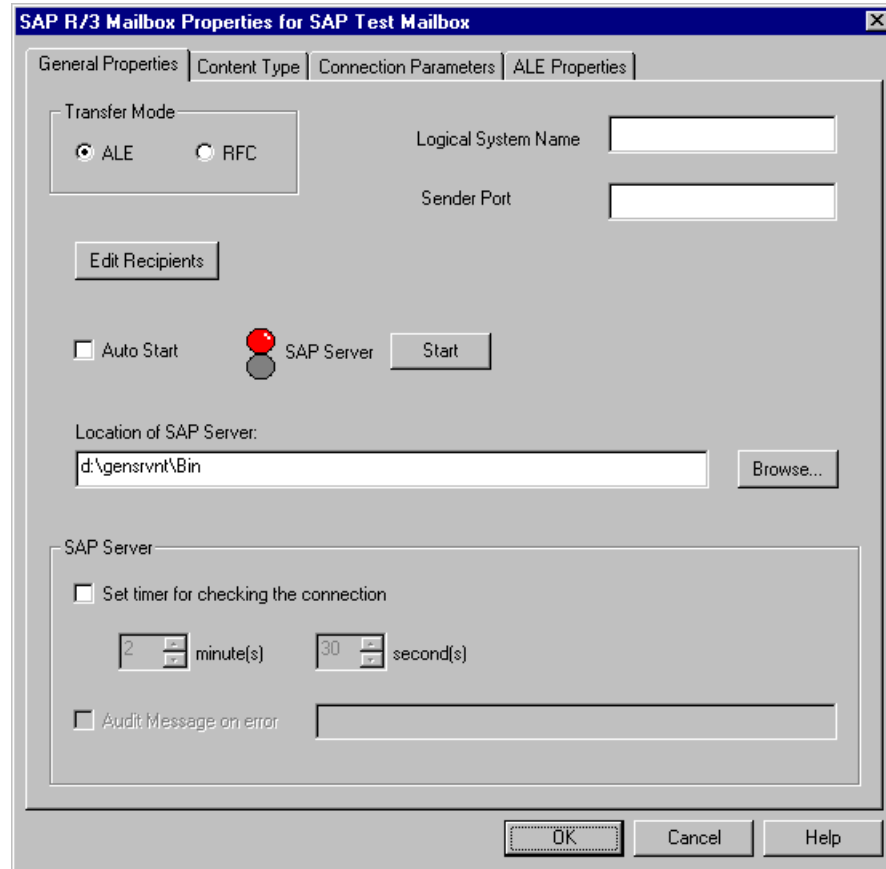
SAP Gateway Mailbox Properties

Introduction

The SAP Mailbox Properties dialog box defines the properties of SAP Gateway Mailboxes.

General Properties tab

This diagram illustrates the General Properties tab of the SAP Mailbox Properties dialog box.



Parts and functions

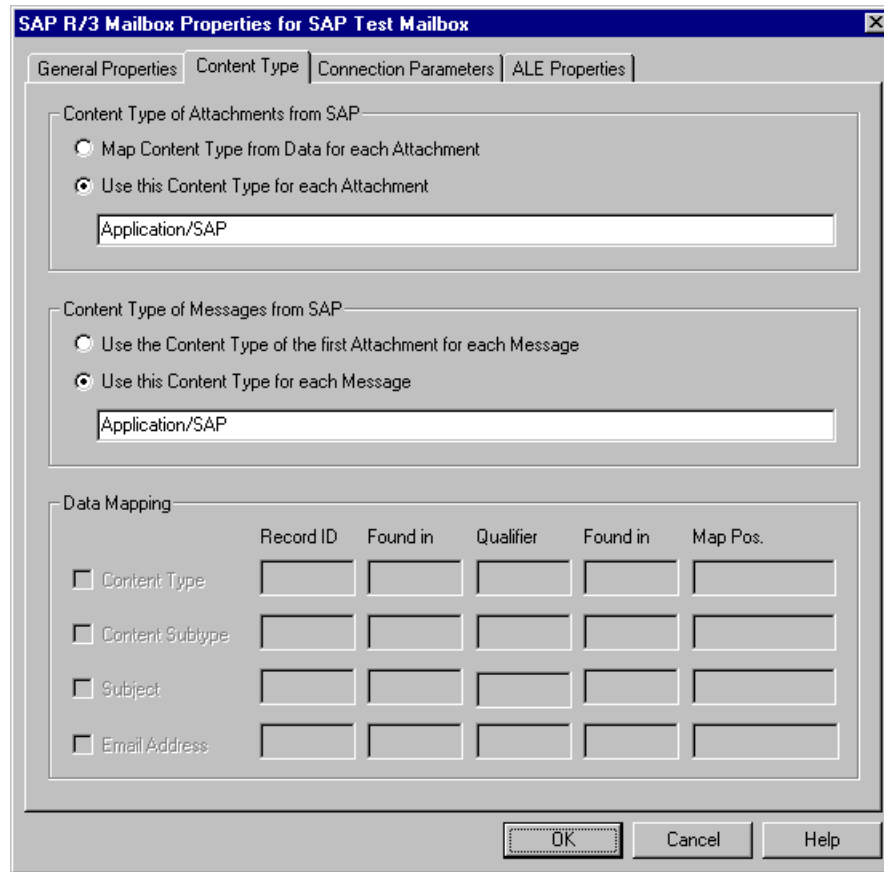
This table describes the parts of the General Properties tab of the SAP Mailbox Properties dialog box and their functions.

Part	Function
Transfer Mode	<p>Defines the preferred method of data transference. Valid options are:</p> <ul style="list-style-type: none"> ▶ ALE - Application Link Enabling ▶ RFC - Remote Function Call <p style="text-align: right; color: green;">(Continued on next page)</p>

(Contd) Part	Function
Logical System Name	Specifies the system name defined in SAP. Used with ALE.
Sender Port	Specifies the port name defined for the Logical System in the SAP system. Used with ALE.
Edit Recipients	Enables you to access the Edit Recipients dialog box and select message recipients for messages that you receive from SAP R/3.
SAP Server	Toggles between options on how you want to start the SAP server. Options are: <ul style="list-style-type: none"> ▶ Start - manually starts/stops the SAP Server program ▶ Auto Start - auto starts the SAP Server program
Location of SAP Server Browse	Specifies where the SAP server is located. You can manually enter the path and filename, or click Browse to navigate to the location.
Set timer for checking the connection	Enables you to specify the time interval at which you want the system to verify the connection between the SAP gateway and the SAP system. This interval can be expressed in: <ul style="list-style-type: none"> ▶ minute(s) ▶ second(s)
Audit message on error	Specifies an error message number for which you want the system to generate an audit message when messages need to be resent. This option is only available when the Set timer for checking the connection check box is selected.
OK	Saves changes; exits dialog box.
Cancel	Cancels unsaved changes; exits dialog box.
Help	Launches online Help system.

Content Type tab

This diagram illustrates the Content Type tab of the SAP Mailbox Properties dialog box.

**Parts and functions**

This table describes the parts of the Content Type tab of the SAP Mailbox Properties dialog box and their functions.

Part	Function
Content Type of Attachment from SAP	Specifies how you want to manage content type information on attachments received from SAP. Valid options are: <ul style="list-style-type: none"> • Map Content Type from Data for each Attachment - activates Data Mapping section of dialog box. • Use this Content Type for each attachment - enables you to specify a content type to apply to each attachment. <p style="text-align: right; color: green;">(Continued on next page)</p>

(Contd) Part	Function										
Content Type of Messages from SAP	<p>Specifies how you want to manage content type information on messages received from SAP. Valid options are:</p> <ul style="list-style-type: none"> • Use the Content Type of the first Attachment for each message. • Use this Content Type for each message - enables you to specify a content type that you want to apply to each message. 										
Data Mapping	<p>Used when the Map Content Type from Data for each Attachment option is selected. Selecting the appropriate check box enables you to map Content type, content subtype, Subject, or Email Address from data received.</p> <p>Note Record ID, Found in, and Map Pos are required fields.</p> <p>Example</p> <table border="1" data-bbox="711 856 1414 919"> <thead> <tr> <th>Record ID</th> <th>Found In</th> <th>Qualifier</th> <th>Found In</th> <th>Map Pos</th> </tr> </thead> <tbody> <tr> <td>EDI_DC</td> <td>1-6</td> <td>ORDERS</td> <td>419-424</td> <td>419-424</td> </tr> </tbody> </table>	Record ID	Found In	Qualifier	Found In	Map Pos	EDI_DC	1-6	ORDERS	419-424	419-424
Record ID	Found In	Qualifier	Found In	Map Pos							
EDI_DC	1-6	ORDERS	419-424	419-424							
OK	Saves changes; exits dialog box.										
Cancel	Cancels unsaved changes; exits dialog box.										
Help	Launches online Help system.										

Connection Parameters tab

This diagram illustrates the Connection Parameters tab of the SAP Mailbox Properties dialog box.

Parts and functions

This table describes the parts of the Connection Parameters tab of the SAP Mailbox Properties dialog box and their functions.

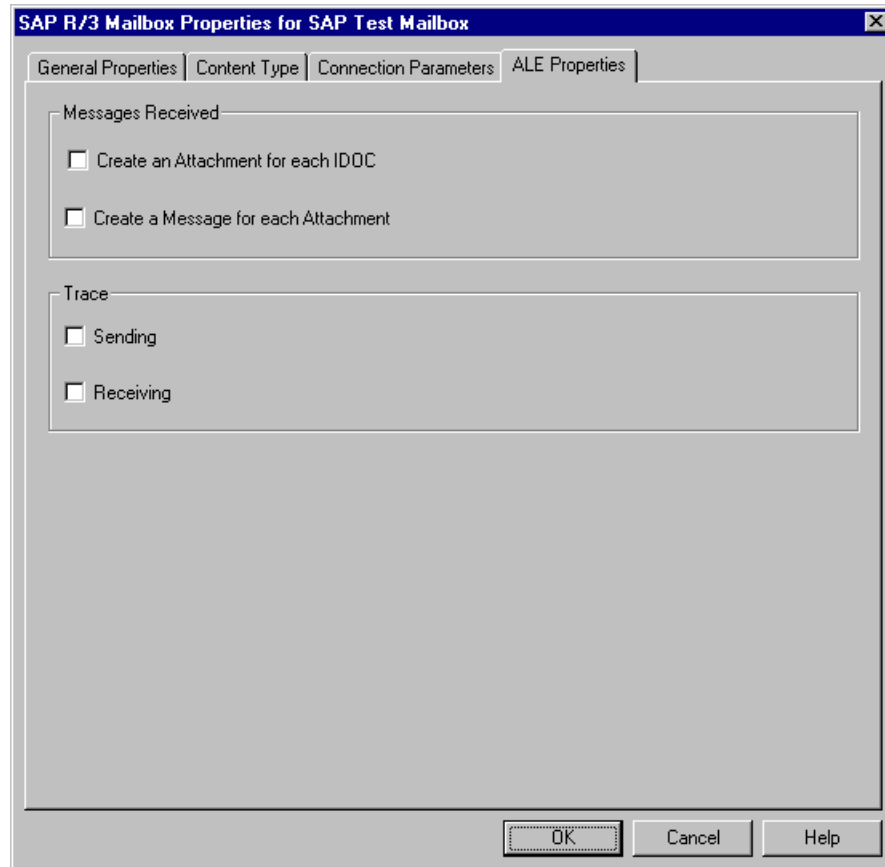
Part	Function
Function Module	Name of the function module called to upload inbound IDoc data files (i.e., EDI_DATA_INCOMING).
Release	Identifies the release of the SAP system (ex. -3 represents the IDoc for SAP 3.x products.).
System ID	Identifies the second part of the Server Name field on SAP transaction SM51.
Username	Identifies the SAP system user ID (Upper case).
User Password	Identifies the user password (in uppercase type).

(Continued on next page)

(Contd) Part	Function
System Client	Identifies the SAP system client as contained in the MANDT field of the IDoc.
System Language	Identifies the SAP users language. The default is E for English.
Application Server	Identifies the application server (the first part of the Server Name field on SAP transaction SM51).
System ID Number	Two-digit system identification number (the third part of the Server Name field on SAP transaction SM51)
Gateway Server	Identifies the gateway server from SAP transaction SE38. This value is case-sensitive.
Service	Identifies the SAP service from SAP transaction SE38.
Port	Identifies the SAP logical system port. This is typically SAP<SAP System Name> (from SAP transaction WE21).
OK	Saves changes; exits dialog box.
Cancel	Cancel unsaved changes; exits dialog box.
Help	Launches the online Help system.

ALE Properties tab

This diagram illustrates the ALE Properties tab of the SAP Mailbox Properties dialog box, which is only displayed if you selected the ALE transfer mode on the General tab.



Parts and functions

This table describes the parts of the ALE Properties tab of the SAP Mailbox Properties dialog box and their functions.

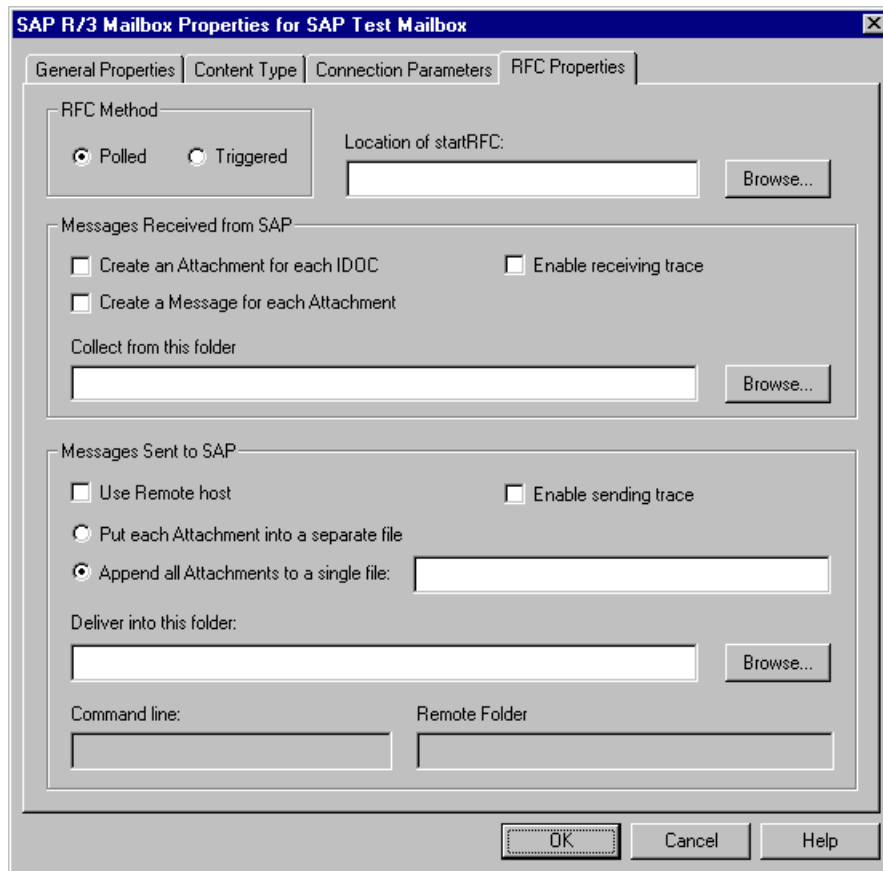
Part	Function
Messages Received	<ul style="list-style-type: none"> • Create an attachment for each IDoc - specifies that you want a separate attachment created for each IDoc received. This is recognized by the SAP IDoc Control record. • Create a message for each attachment - specifies that you want a separate message created for each attachment.
Trace	<ul style="list-style-type: none"> • Sending - traces processing errors that occur during a send operation in SAP. • Receiving - traces processing errors that occur during a receive operation in SAP.

(Continued on next page)

(Contd) Part	Function
OK	Saves changes; exits dialog box.
Cancel	Cancel unsaved changes; exits dialog box.
Help	Launches online Help system.

**RFC Properties
tab**

This diagram illustrates the RFC Properties tab of the SAP Mailbox Properties dialog box, which is only displayed if you selected the RFC transfer mode on the General tab.



Parts and functions

This table describes the parts of the RFC Properties tab of the SAP Mailbox Properties dialog box and their functions.

Part	Function
RFC method	<ul style="list-style-type: none"> ▶ Polled - SAP gateway polls its system to determine whether a message has been received. ▶ Triggered - SAP notifies the SAP gateway that it has sent a message.
Location of startRFC (for sending to SAP)	Identifies the path to the SAP startRFC.exe program. You can manually type the full path name or click Browse to navigate to the correct location.
Messages Received from SAP	<p>Specifies how you want to manage messages and attachments received from SAP. Options are:</p> <ul style="list-style-type: none"> ▶ Create an attachment for each IDoc - specifies that you want a separate attachment created for each IDoc received. This is recognized by the SAP IDoc Control record. ▶ Enable receiving trace - traces processing errors that occur during a receive operation in SAP. ▶ Create a message for each Attachment - specifies that you want a separate message created for each attachment. ▶ Collect from this folder - Specifies a specific folder from which you want to retrieve messages received from SAP. You can manually type the path to this folder or click Browse to navigate to the location.
Messages Sent to SAP	<ul style="list-style-type: none"> ▶ Use remote host - select if the SAP Host system is on a remote server. ▶ Enable sending trace - traces processing errors that occur during a send operation in SAP. ▶ Append all attachments to a single file. ▶ Put each attachment into a separate file (you must specify the file and path). ▶ Deliver into this folder - specifies a path and filename where you want attachments sent to SAP to be delivered (or click Browse). ▶ Command Line - activated when using a remote host. Enables a command to be executed like an FTP script from the local machine to the remote folder. ▶ Remote Folder - Activated when using a remote host. Specifies the name of the folder on the remote host. This is the folder used on the Startup command and it is also the folder that is passed to the Command Line as the first argument. <p style="text-align: right; color: green;">(Continued on next page)</p>

(Contd) Part	Function
OK	Produces a validation report and then saves changes and exits dialog box.
Cancel	Cancels unsaved changes; exits dialog box.
Help	Launches the online Help system.

Mailbox Properties

Introduction The Mailbox Properties dialog box defines the properties of the mailbox.

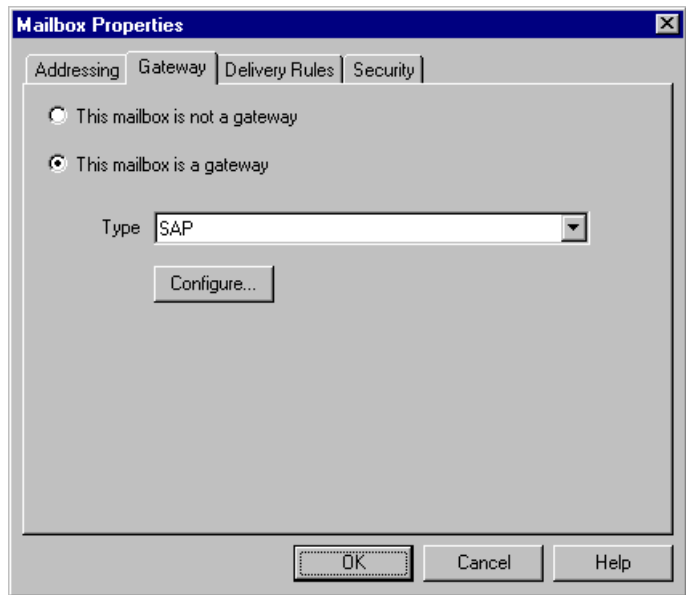
Addressing Tab This diagram illustrates the Addressing tab of the Mailbox Properties dialog box.



Parts and functions This table describes the parts of the Addressing tab of the Mailbox Properties dialog box and their functions.

Part	Function
Name	Defines the name of the mailbox.
Gentran Email address	Defines the Gentran e-mail address for messages sent from the mailbox.
OK	Saves changes; exits dialog.
Cancel	Closes dialog without saving changes.
Help	Accesses online help.

Gateway Tab This diagram illustrates the Gateway tab of the Mailbox Properties dialog box.

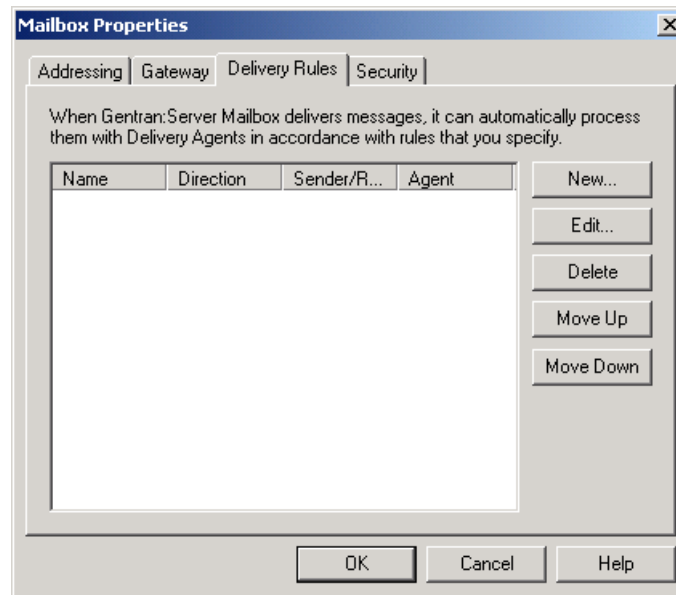


Parts and functions This table describes the parts of the Gateway tab of the Mailbox Properties dialog box and their functions.

Part	Function
This mailbox is not a gateway	Specifies whether the mailbox is or is not a gateway. Options are:
This mailbox is a gateway	
Type	Specifies the type of gateway. Activated when the This mailbox is a gateway option is selected.
Configure	Enables you to configure properties for the gateway.
OK	Saves changes; exits dialog.
Cancel	Closes dialog without saving changes.
Help	Accesses online help.

Delivery Rules Tab

This diagram illustrates the Delivery Rules tab of the Mailbox Properties dialog box.

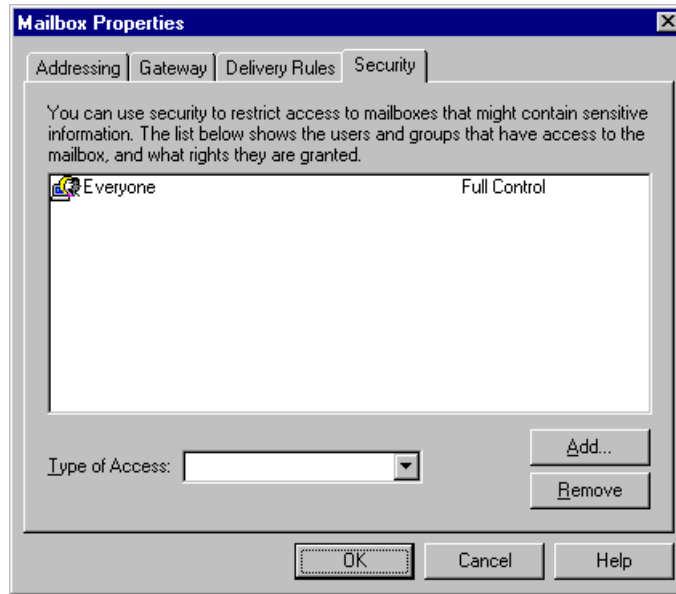
**Parts and functions**

This table describes the parts of the Delivery Rules tab of the Mailbox Properties dialog box and their functions.

Part	Function
Name	Defines the name of the Delivery Rule.
Direction	Identifies if the rule is run when sending or receiving a message.
Sender/Recipient	Identifies the mailbox of the sender or recipient. The E-mail address can be specified in addition to the mailbox name.
Agent	Identifies the name of the delivery agent to be run.
New	Enable you to create new Delivery Rules.
Edit	Enables you to edit existing Delivery Rules.
Delete	Enables you to delete Delivery Rules.
Move Up	Moves the selected Delivery Rule up in the processing order.
Move Down	Moves the selected Delivery Rule down in the processing order.
OK	Saves changes; exits dialog.
Cancel	Closes dialog without saving changes.
Help	Accesses online help.

Security Tab

This diagram illustrates the Security tab of the Mailbox Properties dialog box.



Parts and functions

This table describes the parts of the Security tab of the Mailbox Properties dialog box and their functions.

Part	Function
(User list)	Defines users and groups that have access to mailbox.
Type of Access	Designates level at which a user can interact with a mailbox. Values are: <ul style="list-style-type: none"> ▶ Full control ▶ Read ▶ Write
Add	Enables you to grant users or groups mailbox access.
Remove	Enables you to remove user or group mailbox access.
OK	Saves changes; exits dialog.
Cancel	Closes dialog without saving changes.
Help	Accesses online help.



Procedures

Configuration process

SAP gateway process

This table lists the stages in which you configure your SAP gateway.

Stage	Description
1	Configure the SAP gateway-level properties. Reference <i>See How to Configure Your SAP Gateway on page 2 - 21 for instructions.</i>
2	Create the gateway mailboxes that you intend to use. Reference <i>See How to Create SAP Gateway Mailboxes on page 2 - 23 for instructions.</i>

How to Configure Your SAP Gateway

Introduction This gateway is used for sending and receiving messages through an SAP messaging system. This procedure configures gateway-level properties.

Note

To configure RFC properties or ALE properties at the mailbox level, create the mailbox, then select the RFC Properties tab or the ALE Properties tab of the SAP Mailbox Properties dialog box.

Before you begin Before you begin configuring your SAP gateway you must:

- Install and configure your SAP messaging software.

Reference

See the documentation that came with your SAP messaging software for instructions.

- Install the SAP gateway.

Reference

See the *Option Pack Installation Card* for step-by-step installation instructions.

Procedure Use this procedure to configure SAP gateway properties.

Step	Action
1	Start the Mailbox Server Manager. System Response The system displays the Mailbox Server Manager.
2	Expand the gateways folder icon to display installed gateways.
3	Select SAP from the gateways list.
4	Right-click and select Properties . System Response The system displays the SAP gateway Properties dialog box.
5	Set the RFC period scan interval.
6	Do you want to launch the SAP server for a particular SAP mailbox? <ul style="list-style-type: none"> • If yes, click Launch Server Monitor, select the appropriate mailbox, and click Start and then Exit. Continue with the next step. • If no, continue with the next step. <p style="text-align: right; color: green;">(Continued on next page)</p>

(Contd) Step	Action
7	<p>Do you want to specify a time interval for which you want the system to resend undelivered messages?</p> <ul style="list-style-type: none"> ▶ If yes, select the Set timer for resending undelivered messages check box. Enter the time interval in the minute(s) and second(s) boxes. Continue with the next step. ▶ If no, continue with Step 9.
8	<p>Do you want to specify an error message for which you want the system to generate an audit message?</p> <ul style="list-style-type: none"> ▶ If yes, select the Audit Message on error check box. Enter the error message number in the appropriate box. Continue with the next step. ▶ If no, continue with the next step.
9	Verify that the value in the Default content type for collected files box is accurate.
10	Verify that the path to the Working Directory is accurate.
11	<p>Click OK to complete the configuration of this gateway.</p> <p>You are now ready to create SAP gateway Mailboxes to use with this gateway.</p> <p>Reference See <i>How to Create SAP Gateway Mailboxes</i> on page 2 - 23 for instructions.</p>

How to Create SAP Gateway Mailboxes

Introduction

This section describes how to create SAP Gateway Mailboxes.

Connection parameters ALE

This table describes the connection parameters required for the ALE transfer mode.

Field	Required on Client?	Required on Server?
Function Module	Yes Note If this field is empty, the system uses a release dependent default.	No
Release	Yes	No
System ID	No	No
User	Yes	No
User Password	Yes	No
System Client	Yes	No
System Language	Yes	No
Application Server	Yes	No
System ID Number	Yes	No
Gateway Server	Yes	Yes
Service	No	Yes
Port	No	No

Connection parameters RFC

This table describes the connection parameters required for the RFC transfer mode.

Field	Required Inbound?	Required Outbound?
Function Module	No	Yes
Release	No	Yes
System ID	No	Yes
User	No	Yes
User Password	No	Yes
System Client	No	Yes

Field	Required Inbound?	Required Outbound?
System Language	No	Yes
Application Server	No	Yes
System ID Number	No	Yes
Gateway Server	No	Yes
Service	No	Yes
Port	No	Yes

Procedure Use this procedure to create SAP gateway Mailboxes.

Step	Action
1	Start the Mailbox Server Manager.
2	Select the Mailboxes folder icon.
3	Right-click and select New from the shortcut menu. System Response The system displays the Mailbox Creation Wizard dialog box.
4	Enter the name and description of the mailbox that you are creating and click Next to advance the wizard.
5	Enter the Mailbox Alias. Click Next to advance the wizard.
6	From the What type of Mailbox do you want to create list, select SAP . Click Next to advance the wizard.
7	Select the number of days that you want the message to stay in the system. Click Next to advance the wizard.
8	Do you need to restrict user access to this mailbox? <ul style="list-style-type: none"> ▶ If yes, highlight the user, then click the appropriate Edit or Remove button. Make the desired changes. Click OK to return to the Mailbox Wizard. Click Next to advance the wizard. ▶ If no, click Next to advance the wizard. <p style="text-align: right;">(Continued on next page)</p>

(Contd) Step	Action
9	<p>Do you want to configure mailbox-level properties?</p> <ul style="list-style-type: none"> ▶ If yes, click Next to display General Properties tab of the SAP Mailbox Properties dialog box. Continue with the next step. ▶ If no, click Finish to exit the Mailbox Creation Wizard and to return to the Mailbox Server Manager. <p>Note If you attempt to create a mailbox and the data store is missing, the system generates an error message box informing you that the mailbox cannot be created. Click OK to exit the message box and click Cancel to exit the Create Mailbox Wizard.</p> <p>Note You must configure gateway mailbox properties before you can use this gateway.</p> <p>Reference See <i>How to Add or Modify Gateway Mailbox Properties</i> on page 2 - 29 for instructions.</p>
10	<p>Enter the transfer mode. Valid options are:</p> <ul style="list-style-type: none"> ▶ RFC ▶ ALE
11	<p>Are you using ALE?</p> <ul style="list-style-type: none"> ▶ If yes, enter the Logical System Name and the Sender Port in the appropriate boxes. Continue with the next step. ▶ If no, continue with the next step.
12	<p>Are you receiving SAP data?</p> <ul style="list-style-type: none"> ▶ If yes, continue with the next step. ▶ If no, continue with Step 24.
13	<p>Click Edit Recipients.</p> <p>System Response The system displays the Edit Recipients dialog box.</p>
14	<p>Select a recipient from the list or enter the name in the box.</p> <p>Note You can also select a predefined distribution list.</p> <p>Reference See “Maintaining the Mailbox Server Manager” in the <i>Communications User’s Guide</i> for information about how to create a Distribution List.</p> <p style="text-align: right;">(Continued on next page)</p>

(Contd) Step	Action	
15	Click the appropriate routing option. Valid options are: <ul style="list-style-type: none"> ▶ To ▶ CC ▶ BCC System Response The system displays the Email Address dialog box.	
16	Do you want to specify a Email Address? <ul style="list-style-type: none"> ▶ If yes, enter the Email Address in the box. Click Add. Click OK. ▶ If no, click Cancel. System Response You return to the Edit Recipients dialog box.	
17	Do you want to add more recipients? <ul style="list-style-type: none"> ▶ If yes, repeat Steps 14 to 17. Continue with the next step. ▶ If no, continue with the next step. 	
18	Click OK to exit the Edit Recipients dialog box.	
19	Select the process by which you want to start the SAP server. Valid options are: <ul style="list-style-type: none"> ▶ Start ▶ Auto start 	
20	Type the location of the SAP server or click Browse to navigate to the location.	
21	Do you want to specify a time interval for which the system will check the SAP server connection? <ul style="list-style-type: none"> ▶ If yes, click the Set timer for checking the connection check box. Enter a time interval in minutes and seconds. Continue with the next step. ▶ If no, continue with the next step. 	
22	Use this table to determine your next step.	
	IF the Set timer for checking the connection box is...	THEN...
	selected	Continue with the Step 23.
	not selected	Continue with Step 24.
(Continued on next page)		

(Contd) Step	Action	
23	Do you want to specify an error on which you want the system to generate an audit message? <ul style="list-style-type: none"> ▶ If yes, select the Audit message check box. In the On error box, type the error message number. ▶ If no, continue with the next step. 	
24	Select the Content Type tab.	
25	Select a Content Type of Attachments from SAP option.	
26	Select a Content Type of Messages from SAP option.	
27	In Step 25, did you select the Map Content Type from Data for each Attachment option? <ul style="list-style-type: none"> ▶ If yes, continue with the Data Mapping section of the dialog box. Select the check box in front of each data component that you want to map. Type the appropriate mapping information. Continue with the next step. <p>Note Record ID, Found In, and Map Pos. are required fields.</p> <ul style="list-style-type: none"> ▶ If no, continue with the next step. 	
28	Select the Connection Parameters tab.	
29	Enter the appropriate connection parameters.	
30	Use this table to determine your next step.	
	IF...	THEN....
	You are using ALE	<ul style="list-style-type: none"> ▶ Click the ALE Properties tab. Configure the appropriate options. ▶ Click OK to save all changes. <p>Note See <i>ALE Properties</i> tab on page 2 - 12 for field descriptions.</p>
You are using RFC	<ul style="list-style-type: none"> ▶ Click the RFC Properties tab. Configure the appropriate options. ▶ Click OK to save all changes. <p>Note See <i>RFC Properties</i> tab on page 2 - 13 for field descriptions.</p>	

How to Modify Gateway Mailbox Configuration Properties

Introduction This section describes how to modify gateway mailbox configuration properties that were created using the Mailbox Configuration Wizard.

Procedure Use this procedure to modify gateway mailbox properties.

Step	Action	
1	Start the Mailbox Server Manager.	
2	Expand the Mailboxes folder.	
3	Select the mailbox for which you want to add or modify properties.	
4	Right-click and select Properties from the shortcut menu. System Response The system displays the Mailbox Configuration dialog box.	
5	Use this table to determine your next step.	
	IF you want to change the mailbox...	THEN click this tab...
	<ul style="list-style-type: none"> ▶ name ▶ description ▶ mailbox alias ▶ message life span ▶ configuration properties 	General
	user security permissions	Security
	delivery rules	Delivery Rules
6	Make the appropriate modifications, and click OK to save changes and to exit the Mailbox Configuration dialog box.	

How to Add or Modify Gateway Mailbox Properties

Introduction This section describes how to add or how to modify gateway mailbox properties.

Procedure Use this procedure to add or modify gateway mailbox properties.

Step	Action	
1	Start the Mailbox Server Manager.	
2	Expand the Mailboxes folder.	
3	Select the mailbox for which you want to add or modify properties.	
4	Right-click and select Properties from the shortcut menu. System Response The system displays the Mailbox Configuration dialog box.	
5	Click Configure . System Response The system displays the properties for the selected mailbox.	
6	Use this table to determine your next step.	
	IF you...	THEN...
	did configure properties as part of the mailbox creation properties,	<ul style="list-style-type: none"> ▶ Make the necessary modifications. Click OK to save your changes and to exit the dialog box.
did not configure properties as part of the mailbox creation process,	<ul style="list-style-type: none"> ▶ Continue with Step 10 of <i>How to Create SAP Gateway Mailboxes</i> on page 2 - 23. 	

