

**Gentran:Server® for Windows®**

**Internet E-mail Gateway  
Configuration Guide**

Version 5.2

**Sterling Commerce**  
An IBM Company

## Copyright Notice

### **Gentran:Server for Windows**

© Copyright 1995–2008  
Sterling Commerce, Inc.  
ALL RIGHTS RESERVED

### **Sterling Commerce Software** Trade Secret Notice

**THE GENTRAN:SERVER FOR WINDOWS SOFTWARE ("STERLING COMMERCE SOFTWARE") IS THE CONFIDENTIAL AND TRADE SECRET PROPERTY OF STERLING COMMERCE, INC., ITS AFFILIATED COMPANIES OR ITS OR THEIR LICENSORS, AND IS PROVIDED UNDER THE TERMS OF A LICENSE AGREEMENT. NO DUPLICATION OR DISCLOSURE WITHOUT PRIOR WRITTEN PERMISSION. RESTRICTED RIGHTS.**

This documentation, the Sterling Commerce Software it describes, and the information and know-how they contain constitute the proprietary, confidential and valuable trade secret information of Sterling Commerce, Inc., its affiliated companies or its or their licensors, and may not be used for any unauthorized purpose, or disclosed to others without the prior written permission of the applicable Sterling Commerce entity. This documentation and the Sterling Commerce Software that it describes have been provided pursuant to a license agreement that contains prohibitions against and/or restrictions on their copying, modification and use. Duplication, in whole or in part, if and when permitted, shall bear this notice and the Sterling Commerce, Inc. copyright notice.

As and when provided to any governmental entity, government contractor or subcontractor subject to the FARs, this documentation is provided with RESTRICTED RIGHTS under Title 48 CFR 52.227-19. Further, as and when provided to any governmental entity, government contractor or subcontractor subject to DFARs, this documentation and the Sterling Commerce Software it describes are provided pursuant to the customary Sterling Commerce license, as described in Title 48 CFR 227-7202 with respect to commercial software and commercial software documentation.

These terms of use shall be governed by the laws of the State of Ohio, USA, without regard to its conflict of laws provisions. If you are accessing the Sterling Commerce Software under an executed agreement, then nothing in these terms and conditions supersedes or modifies the executed agreement.

Product names mentioned herein may be trademarks and/or registered trademarks of their respective companies. Gentran and Gentran:Server are registered trademarks of Sterling Commerce, Inc.

### **Third Party Software:**

Portions of the Sterling Commerce Software may include products, or may be distributed on the same storage media with products, ("Third Party Software") offered by third parties ("Third Party Licensors").

### **Warranty Disclaimer**

This documentation and the Sterling Commerce Software which it describes are licensed either "AS IS" or with a limited warranty, as set forth in the Sterling Commerce license agreement. Other than any limited warranties provided, NO OTHER WARRANTY IS EXPRESSED AND NONE SHALL BE IMPLIED, INCLUDING THE WARRANTIES OF MERCHANTABILITY AND FITNESS FOR USE OR FOR A PARTICULAR PURPOSE. The applicable Sterling Commerce entity reserves the right to revise this publication from time to time and to make changes in the content hereof without the obligation to notify any person or entity of such revisions or changes.

The Third Party Software is provided 'AS IS' WITHOUT ANY WARRANTY AND ANY EXPRESSED OR IMPLIED WARRANTIES, INCLUDING BUT NOT LIMITED TO, THE IMPLIED WARRANTIES OF MERCHANTABILITY, AND FITNESS FOR A PARTICULAR PURPOSE ARE DISCLAIMED. FURTHER, IF YOU ARE LOCATED OR ACCESSING THIS SOFTWARE IN THE UNITED STATES, ANY EXPRESS OR IMPLIED WARRANTY REGARDING TITLE OR NON-INFRINGEMENT ARE DISCLAIMED.

---

# Table of Contents

Preface	About This Guide	
	• Introduction .....	iv
	• Description of Contents .....	v
	• Getting Support .....	vi
Chapter 1	Internet E-mail Gateway Overview	
	• Overview .....	1-2
	• Internet E-mail Gateway .....	1-3
	• Internet E-mail Gateway Mailboxes .....	1-4
	• Gateway Message Flow .....	1-5
Chapter 2	Configuring Communications	
	• Introduction .....	2-2
	<b>Properties</b> .....	<b>2-3</b>
	• Mailbox Properties .....	2-3
	<b>Procedures</b> .....	<b>2-11</b>
	• Configuration process .....	2-11
	• How to Create Internet E-mail Gateway Mailboxes .....	2-12
	• How to Modify Mailbox Properties .....	2-16
Appendix A	Internet E-mail Gateway Error Messages	
	<b>Overview</b> .....	<b>A-2</b>
	• Introduction .....	A-2
	<b>Internet E-mail Gateway Error Messages</b> .....	<b>A-3</b>
	• Internet E-mail Gateway Error Messages .....	A-3
	• SCMailData Error Messages .....	A-5



# About This Guide

---

## Contents

- ▶ Introduction . . . . .iv
  - ▶ Description of Contents . . . . .v
  - ▶ Getting Support . . . . .vi
- 



# Introduction

- 
- Overview** This manual contains the tasks you must follow to:
- configure the Gentran:Server Internet E-mail Gateway
  - create Internet E-mail Gateway mailboxes

---

**Intended audience** The intended audience for this manual is Gentran:Server system administrators.

- 
- Prerequisite knowledge** The audience using this software should be familiar with:
- Your operating system
  - SMTP and POP3 protocols
-

# Description of Contents

---

**Introduction**

This guide is organized into the tasks that you complete when configuring communications for the Internet E-mail Gateway.

---

**Organization of chapters**

The guide is organized into chapters. A brief description of each chapter's contents follows.

- About This Guide explains the content, organization, and conventions in this guide.
  - Internet E-mail Gateway Overview provides a high-level overview of the Internet E-mail Gateway.
  - Configuring Communications explains the process for configuring Internet E-mail Gateway communications. This chapter also provides the procedures you must follow to configure your Internet E-mail Gateway Mailboxes.
-

# Getting Support

**Introduction** Sterling Commerce's Gentran:Server software is supported by trained product support personnel who are available to help you with product questions or concerns.

**Note**

Gentran:Server Customer Support does not support non-Sterling Commerce products (e.g., SQL Server, Oracle, etc.), but can assist you in configuring non-Sterling Commerce products to work with Gentran:Server.

**Phone number** For assistance, please refer to your *Getting Started Guide* to determine which support phone number you should use.

**Before calling support**

To help us provide prompt service, we ask that you do the following:

- Attempt to recreate any problem that you encounter and record the exact sequence of events.
- When you call product support, you should be prepared to provide us with the information below.

Information	Description
Identification	Your company name, your name, telephone number and extension, and the case number (if the question refers to a previously reported issue).
System Configuration	The Gentran:Server version (and any service packs installed) and information about the primary Gentran system controller and all machines experiencing problems, including: the Windows operating system version, amount of memory, available disk space, database version, Microsoft Data Access (MDAC) version, and Internet Explorer version.  Also, please describe any recent changes in your hardware, software, or the configuration of your system.
System Data Store	Which machines contain folders in the system data store?
Error Messages	Record the exact wording of any error messages you receive and the point in the software where the error occurred, as well as any log files.
Attempted Solutions	Record any steps that you took attempting to resolve the problem and note all the outcomes, and provide an estimate on how many times the problem occurred and whether it can be reproduced.



---

**Accessing the  
Sterling  
Commerce  
Support Web Site**

The Sterling Commerce Customer Support Web Site contains valuable information about getting support for Gentran:Server for Windows, including the:

- scope of support services
- customer support policies
- call prioritizing
- customer support phone directory
- how to create new Support on Demand cases
- how to check the status of Support on Demand cases
- how to add information to Support on Demand cases

The Customer Support Web Site is constantly updated and all Sterling Commerce customers have access to it. This web site also contains the most recent product updates and is a valuable source of product information.

**Reference**

Refer to the *Getting Started Guide* for information on how to access the Customer Support Web Site.

---

**Documentation**

The Customer Support Web Site contains a documentation library, which has the entire Gentran:Server for Windows documentation set. You can download the product manuals in PDF format from this library at any time.

---



---

# Internet E-mail Gateway Overview

---

**Contents**

- ▶ Overview . . . . . 1 - 2
  - ▶ Internet E-mail Gateway . . . . . 1 - 3
  - ▶ Internet E-mail Gateway Mailboxes . . . . . 1 - 4
  - ▶ Gateway Message Flow . . . . . 1 - 5
-

## Overview

- 
- In this chapter** This chapter provides you with a high-level overview of the Gentran:Server Internet E-mail Gateway.
- 
- What is SMTP?** SMTP (Simple Mail Transfer Protocol) is an application-level protocol which delivers E-mail, including the encoding and sending of e-mail attachments.
- 
- What is POP3?** POP3 (Post Office Protocol 3) provides a way for a server machine to store mail for various client machines that may not always be connected to the Internet or are located behind a firewall. E-mail is held in the POP server until you login and retrieve it using a POP client.
- 
- What is a Gateway?** A Gateway is a software component that controls the transmission of messages between two parties. The gateway is responsible for using the correct protocols to transfer messages between the sender and receiver.
- You are responsible for defining the properties of the gateways that you use for transferring messages.
- 
- What is a Mailbox?** A mailbox stores messages until those messages are transferred to a recipient application. You are responsible for creating mailboxes. When you create mailboxes, you associate the mailbox with a gateway. The properties that you define for each mailbox determine how messages are transferred from or to your application via the gateway.
-

# Internet E-mail Gateway

---

## Introduction

Gentran:Server supports multiple transfer protocols. The Internet E-mail Gateway facilitates the transfer of inbound and outbound messages of any format with the Gentran:Server Mailbox Server by acting as a Simple Mail Transfer Protocol (SMTP) and Post Office Protocol 3 (POP3) client.

The Internet E-mail Gateway supports the following protocols:

- SMTP for outgoing messages
  - POP3 for incoming messages
-

# Internet E-mail Gateway Mailboxes

---

**Introduction** You must configure properties for Internet E-mail mailboxes you create.

**Reference**

See Configuring Communications, chapter 2 of this guide, for more information on configuring the Internet E-mail mailboxes.

---

## Gateway Message Flow

### Inbound message flow

This table describes the inbound flow of messages through the Internet E-mail Gateway.

Stage	Process
1	The incoming E-mail message is sent to the E-mail address configured for the Gentran:Server Internet E-mail Gateway mailbox.
2	The POP3 server collects the E-mail message.
3	The Internet E-mail Gateway periodically polls the POP3 server to look for new messages. When new messages arrive, the Internet E-mail Gateway pulls them (and then deletes them) from the POP3 server.  <b>Note</b> If an error occurs while polling the POP3 server, the appropriate log message is written to the Gentran:Server Audit Log.
4	The Gentran:Server Mailbox service passes the new messages to the Outbox of the Gentran:Server Internet E-mail Gateway mailbox configured to receive messages.
5	The Internet E-mail Gateway mailbox delivers the messages to the Inbox of the configured recipient mailboxes.

### Outbound message flow

This table describes the outbound flow of messages through the Internet E-Mail Gateway.

Stage	Process
1	An outgoing message (in final format) is generated and placed in the Inbox of the Gentran:Server Internet E-mail Gateway mailbox configured to send messages.
2	The Internet E-mail Gateway packages the configured MIME header information around the outgoing message.
3	Then, using the gateway settings for this mailbox, the Internet E-mail Gateway sends the outgoing message to the SMTP server for delivery to the configured E-mail address.
4	The SMTP server receives the outgoing E-mail message and sends it to its final destination.
5	The SMTP server sends back status information regarding the recently sent message to indicate either success or failure.  (Continued on next page)

<b>(Contd) Stage</b>	<b>Process</b>
6	<p>The Internet E-mail Gateway will update the status of the message in the Internet E-mail Gateway mailbox Inbox to “Read” if the message was successfully sent or leave the status of the message as “Unread” if the message was not successfully sent.</p> <p><b>Note</b> In either case, the appropriate log message is written to the Gentran:Server Audit Log.</p>

---

**Related topic** See “Tracking Messages” in the *Communications User’s Guide* for additional information.

---



---

# Configuring Communications

---

<b>Contents</b>	▶ Introduction . . . . .	2 - 2
	<b>Properties . . . . .</b>	<b>2 - 3</b>
	▶ Mailbox Properties . . . . .	2 - 3
	<b>Procedures . . . . .</b>	<b>2 - 11</b>
	▶ Configuration process . . . . .	2 - 11
	▶ How to Create Internet E-mail Gateway Mailboxes . . . . .	2 - 12
	▶ How to Modify Mailbox Properties . . . . .	2 - 16

---

## Introduction

---

**In this chapter** This chapter describes the tasks that you must complete to configure your Internet E-mail Gateway and Internet E-mail Gateway Mailbox.

**Note**

There are no gateway-level properties to configure for the Internet E-mail Gateway.

---

**Key Terms**

This table describes key terms used in this chapter.

Term	Description
Gateway	Gateways are software components that control the transmission of messages between two parties. The gateway is responsible for using the correct protocols to transfer messages between the sender and receiver.
SMTP	SMTP (Simple Mail Transfer Protocol) is an application-level protocol which delivers E-mail, including the encoding and sending of e-mail attachments.
POP3	POP3 (Post Office Protocol 3) provides a way for a server machine to store mail for various client machines that may not always be connected to the Internet or are located behind a firewall. E-mail is held in the POP server until you login and retrieve it using a POP client.
Mailbox	A folder or set of folders used to store messages.

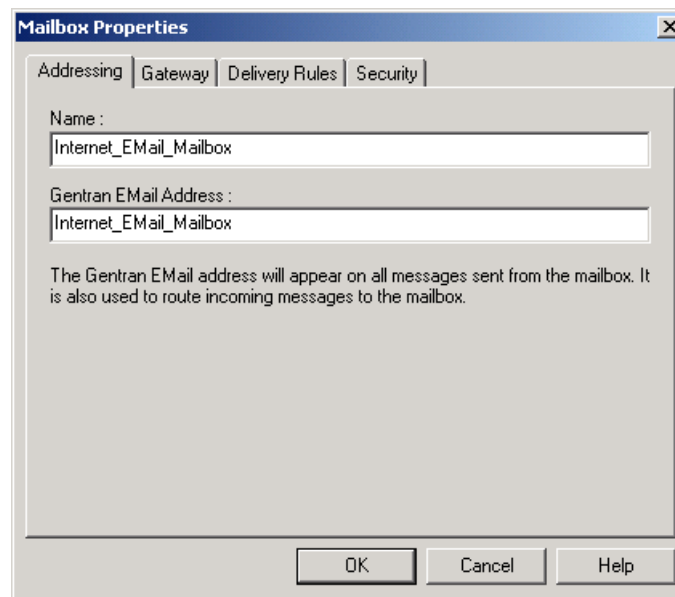
---

# Properties

## Mailbox Properties

**Introduction** The Mailbox Properties dialog box enables you to define the properties of the mailbox.

**Addressing tab diagram** This diagram illustrates the Addressing tab of the Mailbox Properties dialog box.

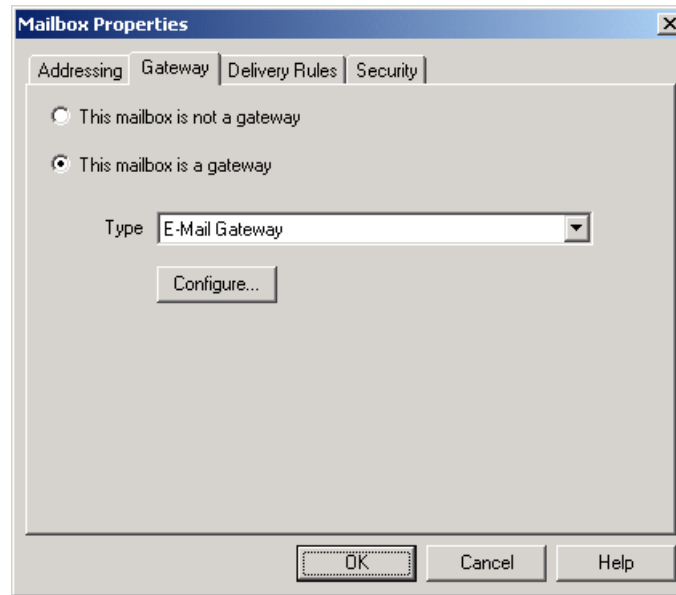


**Addressing tab parts and functions** This table describes the parts of the Addressing tab of the Mailbox Properties dialog box and their functions.

Part	Function
Name	Defines the name of the mailbox.
Gentran E-mail address	Defines the Gentran:Server E-mail address for messages sent from the mailbox.
<b>OK</b>	Saves changes; exits dialog.
<b>Cancel</b>	Closes dialog without saving changes.
<b>Help</b>	Accesses online help.

### Gateway tab diagram

This diagram illustrates the Gateway tab of the Mailbox Properties dialog box.



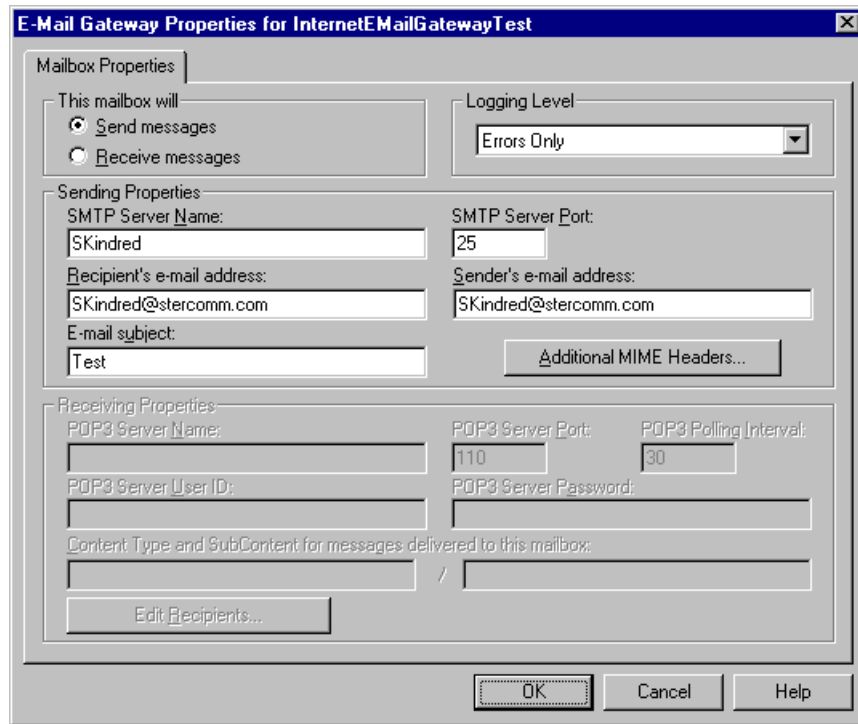
### Gateway tab parts and functions

This table describes the parts of the Gateway tab of the Mailbox Properties dialog box and their functions.

Part	Function
This mailbox is not a gateway	Specifies whether the mailbox is or is not a gateway.  Options are:
This mailbox is a gateway	
Type	Specifies the type of gateway. Activated when the <b>This mailbox is a gateway</b> option is selected.
<b>Configure</b>	Accesses the E-mail Gateway Mailbox Properties dialog to enable you to configure properties for the Internet E-mail gateway.
<b>OK</b>	Saves changes; exits dialog.
<b>Cancel</b>	Closes dialog without saving changes.
<b>Help</b>	Accesses online help.

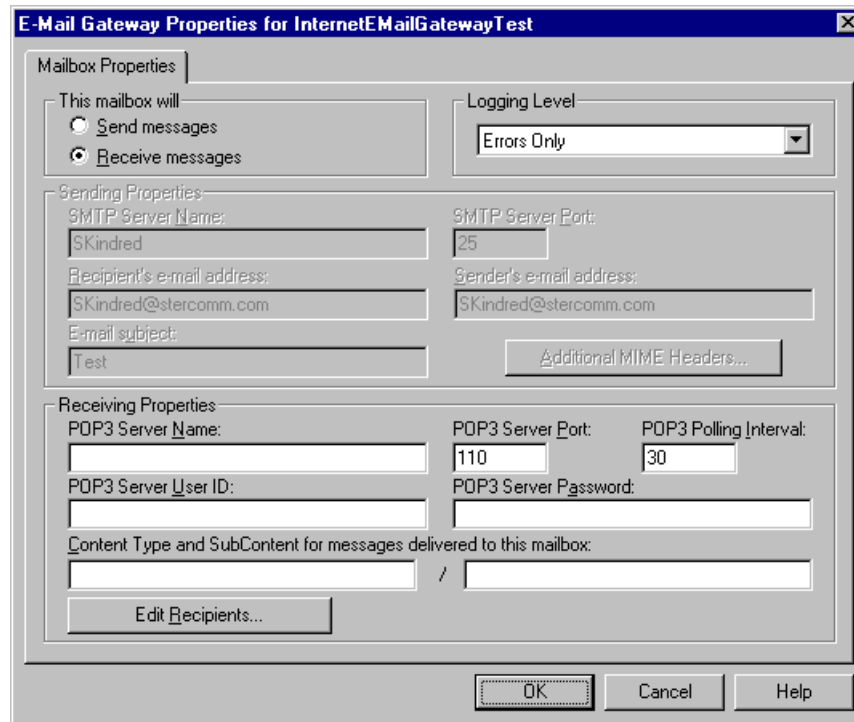
**E-mail Gateway  
Mailbox  
Properties dialog  
box (Send  
properties)  
diagram**

This diagram illustrates the E-mail Gateway Mailbox Properties dialog box with the Send option selected.



### E-mail Gateway Mailbox Properties dialog box (Receive properties) diagram

This diagram illustrates the E-mail Gateway Mailbox Properties dialog box with the Receive option selected.



### E-mail Gateway Mailbox Properties dialog box parts and functions

This table describes the parts of the E-mail Gateway Mailbox Properties dialog box and their functions.

Part	Function
This mailbox will	Indicates whether the mailbox sends or receives messages. Options are: <ul style="list-style-type: none"> <li>• Send messages</li> <li>• Receive messages</li> </ul>
Logging Level	Specifies the level of logging to use when sending or receiving messages. The valid values are: <ul style="list-style-type: none"> <li>• Errors Only</li> <li>• Error and Warning</li> <li>• Detailed</li> </ul>

(Continued on next page)

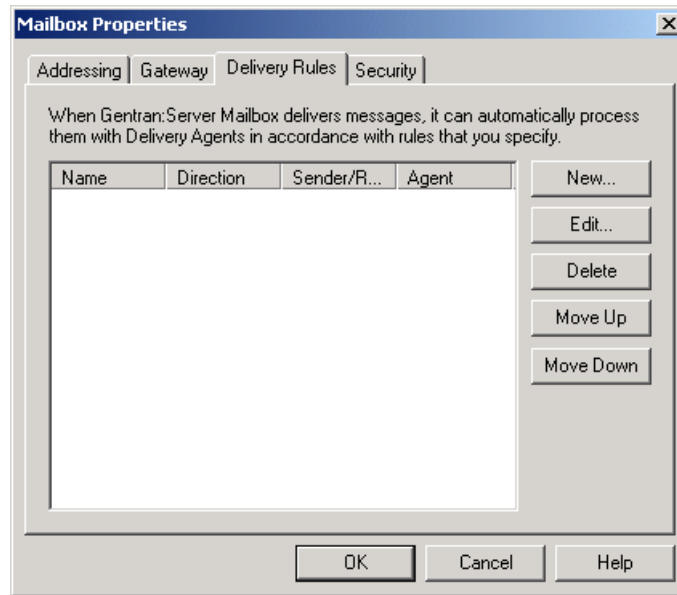
<b>(Contd) Part</b>	<b>Function</b>
<b>Sending Properties</b>	
SMTP Server Name	<p>Contains the default SMTP server host name or IP address.</p> <p><b>Note</b> This box is only activated when you select “Send messages.”</p>
SMTP Server Port	<p>Contains the port number of the default SMTP server.</p> <p><b>Notes</b></p> <ul style="list-style-type: none"> <li>▶ The default is “25.”</li> <li>▶ This box is only activated when you select “Send messages.”</li> </ul>
Recipient’s e-mail address	<p>Contains the E-mail address where outgoing messages are sent.</p> <p><b>Note</b> This box is only activated when you select “Send messages.”</p>
Sender’s e-mail address	<p>Contains the E-mail address to be used in the “From” portion of the outgoing E-mail messages.</p> <p><b>Note</b> This box is only activated when you select “Send messages.”</p>
E-mail subject	<p>Contains the subject line for all E-mail messages sent via this mailbox.</p> <p><b>Note</b> This box is only activated when you select “Send messages.”</p>
<b>Additional MIME Headers</b>	<p>Accesses the Edit MIME Headers dialog box, which enables you to type or select predefined additional MIME headers which will be prepended to the existing MIME headers and used to package and send the outgoing message.</p> <p><b>Note</b> This box is only activated when you select “Send messages.”</p> <p><b>Reference</b> See this URL for more information on MIME headers: <a href="http://www.ietf.org/rfc/rfc2045.txt">http://www.ietf.org/rfc/rfc2045.txt</a></p> <p style="text-align: right; color: green;">(Continued on next page)</p>

<b>(Contd) Part</b>	<b>Function</b>
<b>Receiving Properties</b>	
POP3 Server Name	<p>Contains the POP3 server name.</p> <p><b>Notes</b></p> <ul style="list-style-type: none"> <li>• This box is only activated when you select “Receive messages.”</li> <li>• If this value is not specified the default gateway setting is used.</li> </ul>
POP3 Server Port	<p>Contains the port number for the POP3 server.</p> <p><b>Notes</b></p> <ul style="list-style-type: none"> <li>• The default is “110.”</li> <li>• This box is only activated when you select “Receive messages.”</li> </ul>
POP3 Polling Interval	<p>Specifies the POP3 server polling interval in seconds.</p> <p><b>Note</b> This box is only activated when you select “Receive messages.”</p>
POP3 Server User ID	<p>Contains the user identifier for the POP3 server.</p> <p><b>Note</b> This box is only activated when you select “Receive messages” and the POP3 server setting is configured on this machine.</p>
POP3 Server Password	<p>Contains the password for the POP3 server.</p> <p><b>Note</b> This box is only activated when you select “Receive messages” and the POP3 server setting is configured on this machine.</p>
Content Type and SubContent for messages delivered to this mailbox	<p>Specifies the content type and subcontent type to use when delivering a message from this mailbox to the configured recipients.</p> <p><b>Note</b> This box is only activated when you select “Receive messages.”</p>
<b>Edit Recipients</b>	<p>Accesses the Edit Recipients dialog box to enable you to select recipients for messages received into this mailbox.</p>
<b>OK</b>	<p>Saves changes; exits dialog box.</p>
<b>Cancel</b>	<p>Cancels unsaved changes; exits dialog box.</p>
<b>Help</b>	<p>Launches the online Help system.</p>



**Delivery Rules tab diagram**

This diagram illustrates the Delivery Rules tab of the Mailbox Properties dialog box.



**Delivery Rules tab parts and functions**

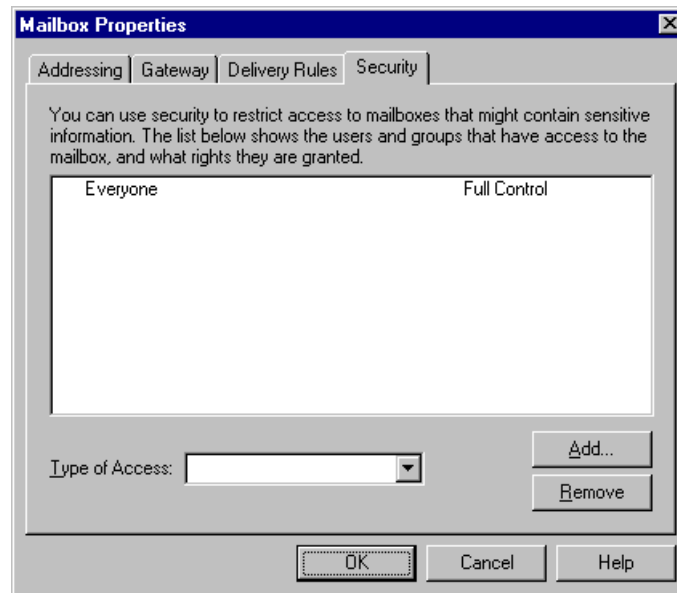
This table describes the parts of the Delivery Rules tab of the Mailbox Properties dialog box and their functions.

Part	Function
Name	Defines the name of the Delivery Rule.
Direction	Identifies if the rule is run when sending or receiving a message.
Sender/Recipient	Identifies the mailbox of the sender or recipient. The mail address can be specified in addition to the mailbox name.
Agent	Identifies the name of the delivery agent to be run.
New	Enables you to create new Delivery Rules.
Edit	Enables you to edit existing Delivery Rules.
Delete	Enables you to delete Delivery Rules.
Move Up	Moves the selected Delivery Rule up in the processing order.
Move Down	Moves the selected Delivery Rule down in the processing order.
OK	Saves changes; exits dialog.
Cancel	Closes dialog without saving changes.
Help	Accesses online help.



### Security tab diagram

This diagram illustrates the Security tab of the Mailbox Properties dialog box.



### Security tab parts and functions

This table describes the parts of the Security tab of the Mailbox Properties dialog box and their functions.

Part	Function
(User list)	Defines users and groups that have access to mailbox.
Type of Access	Designates level at which a user can interact with a mailbox. Values are: <ul style="list-style-type: none"> <li>▶ Full control</li> <li>▶ Read</li> <li>▶ Write</li> </ul>
<b>Add</b>	Enables you to grant users or groups mailbox access.
<b>Remove</b>	Enables you to remove user or group mailbox access.
<b>OK</b>	Saves changes; exits dialog.
<b>Cancel</b>	Closes dialog without saving changes.
<b>Help</b>	Accesses online help.

# Procedures

## Configuration process

### Internet E-mail Gateway process

This table lists the stages in configuring communications for use with the Internet E-Mail Gateway.

Stage	Description
1	Install the Gentran:Server Internet E-mail Gateway. <b>Reference</b> Refer to the Gentran:Server <i>Options Pack Installation Card</i> for more information.
2	Create the Internet E-mail Gateway Mailboxes that you intend to use. <b>Reference</b> See <i>How to Create Internet E-mail Gateway Mailboxes</i> on page 2 - 12 for more information.

# How to Create Internet E-mail Gateway Mailboxes

## Introduction

You must create Internet E-mail Gateway Mailboxes for incoming and outgoing messages, if you plan to receive and send messages through this gateway.

## Creating a mailbox to send messages via SMTP

Use this procedure to create Internet E-Mail Gateway Mailboxes to send messages via SMTP.

Step	Action
1	Start the <b>Mailbox Server Manager</b> .
2	Select the <b>Mailboxes</b> folder icon.
3	Right-click, and select <b>Create</b> from the short-cut menu.  <b>System Response</b> The system displays the Create Mailbox Wizard dialog box.
4	Type the name and description of the mailbox you are creating and click <b>Next</b> twice.  <b>System Response</b> The system displays a dialog asking whether you want to use the mailbox as a gateway to another messaging system.
5	Select <b>Yes, use this mailbox as a gateway</b> .
6	Select <b>E-mail Gateway</b> from the list and click <b>Next</b> to advance the wizard.  <b>System Response</b> The system displays the Create Mailbox Wizard - Summary dialog box.
7	Is the information that you entered correct? <ul style="list-style-type: none"> <li>• If <i>yes</i>, click <b>Finish</b> and continue with the next step.</li> <li>• If <i>no</i>, click <b>Back</b> and correct the information. Then, continue with the next step.</li> </ul> <b>System Response</b> The system displays the Mailbox Properties dialog box (Addressing tab).  <b>Note</b> If you attempt to create a mailbox and the data store is missing, the system generates an error message box informing you that the mailbox cannot be created. Click <b>OK</b> to exit the message box and click <b>Cancel</b> to exit the Create Mailbox Wizard.  <span style="color: green;">(Continued on next page)</span>
8	Select the <b>Gateway</b> tab.  <b>System response</b> The system displays the gateway information.

<b>(Contd) Step</b>	<b>Action</b>
9	Click <b>Configure</b> .  <b>System response</b> The system displays the E-mail Gateway Mailbox Properties dialog box.
10	Verify that the <b>Send message</b> option is selected in the “This mailbox will” section.
11	From the <b>Logging Level</b> list, select the logging level.
12	In the <b>SMTP Server Name</b> box, type the default SMTP server host name or IP address.
13	In the <b>SMTP Server Port</b> box, type the port number of the SMTP server if it is not 25.
14	In the <b>Recipient’s E-mail address</b> box, type the E-mail address where outgoing messages are sent.
15	In the <b>Sender’s E-mail address</b> box, type the E-mail address to be used in the “From” portion of the outgoing E-mail messages.
16	In the <b>E-mail subject</b> box, type the subject line for all E-mail messages sent via this mailbox.
17	Click <b>Additional MIME Headers</b> .  <b>System response</b> The system displays the Edit MIME Headers dialog box.
18	If you want to type or select additional MIME headers which will be prepended to the existing MIME headers and used to package and send the outgoing message, do so and click <b>OK</b> .  <b>Note</b> These MIME headers are prepended verbatim to the start of the outgoing message before it is sent.
19	Click <b>OK</b> to save changes and exit the E-mail Gateway Mailbox Properties dialog box.

### Creating a mailbox to receive messages via POP3

Use this procedure to create Internet E-mail Gateway Mailboxes to receive messages via POP3.

Step	Action
1	Start the <b>Mailbox Server Manager</b> .
2	Select the <b>Mailboxes</b> folder icon.
3	Right-click, and select <b>Create</b> from the short-cut menu.  <b>System Response</b> The system displays the Create Mailbox Wizard dialog box.
4	Type the name and description of the mailbox you are creating and click <b>Next</b> twice.  <b>System Response</b> The system displays a dialog asking whether you want to use the mailbox as a gateway to another messaging system.
5	Select <b>Yes, use this mailbox as a gateway</b> .
6	Select <b>E-mail Gateway</b> from the list and click <b>Next</b> to advance the wizard.  <b>System Response</b> The system displays the Create Mailbox Wizard - Summary dialog box.
7	Is the information that you entered correct?  <ul style="list-style-type: none"> <li>▶ If <i>yes</i>, click <b>Finish</b> and continue with the next step.</li> <li>▶ If <i>no</i>, click <b>Back</b> and correct the information. Then, continue with the next step.</li> </ul> <b>System Response</b> The system displays the Mailbox Properties dialog box (Addressing tab).
8	Select the <b>Gateway</b> tab.  <b>System response</b> The system displays the gateway information.
9	Click <b>Configure</b> .  <b>System response</b> The system displays the E-mail Gateway Mailbox Properties dialog box.
10	Verify that the <b>Receive message</b> option is selected in the “This mailbox will” section.
11	In the <b>POP3 Server Name</b> box, type the POP3 server name.
12	In the <b>POP3 Server Port</b> box, type the port number for the POP3 server if it is not 110.

(Continued on next page)

<b>(Contd) Step</b>	<b>Action</b>
13	In the <b>POP3 Polling Interval</b> box, type the POP3 server polling interval in seconds.
14	In the <b>POP3 Server User ID</b> box, type the user identifier for the POP3 server.
15	In the <b>POP3 Server Password</b> box, type the password for the POP3 server.
16	In the <b>Content Type</b> box, type the content type to use when delivering a message from this mailbox to its recipients.
17	In the <b>SubContent Type</b> box, type the subcontent type to use when delivering a message from this mailbox to its recipients.
18	Click <b>Edit Recipients</b> .  <b>System Response</b> The system displays the Edit Recipients dialog box.
19	Select a recipient from the list or enter the name in the box.  <b>Note</b> You can also select a predefined distribution list.  <b>Reference</b> See the <i>Communications User's Guide</i> for information on how to create a Distribution List.  <b>System Response</b> The system displays the Email Address dialog box.
20	Do you want to specify an E-mail address?  <ul style="list-style-type: none"> <li>▶ If <i>yes</i>, enter the E-mail address in the box. Click <b>Add</b> and then click <b>OK</b>.</li> <li>▶ If <i>no</i>, click <b>Cancel</b>.</li> </ul> <b>System Response</b> The system returns to the Edit Recipients dialog box.
21	Do you want to add more recipients?  <ul style="list-style-type: none"> <li>▶ If <i>yes</i>, repeat Steps 18 through 20.</li> <li>▶ If <i>no</i>, continue with the next step.</li> </ul>
22	Click <b>OK</b> to return to the E-mail Gateway Mailbox Properties dialog box and continue with the next step.
23	Click <b>OK</b> to save changes and exit the E-mail Gateway Mailbox Properties dialog box.
24	Click <b>OK</b> to exit the Mailbox Properties dialog box.

## How to Modify Mailbox Properties

**Introduction** This section describes how to modify mailbox properties that were created using the Create Mailbox Wizard.

**Procedure** Use this procedure to modify mailbox properties.

Step	Action	
1	Start the <b>Mailbox Server Manager</b> .	
2	Expand the <b>Mailboxes</b> folder.	
3	Select the mailbox for which you want to add or modify properties.	
4	Right-click and select <b>Properties</b> from the shortcut menu.  <b>System Response</b> The system displays the Mailbox Properties dialog box (Addressing tab).	
5	Use this table to determine your next step.	
	<b>IF you want to change the mailbox...</b>	<b>THEN click this tab...</b>
	<ul style="list-style-type: none"> <li>▶ name</li> <li>▶ Gentrans E-mail address</li> </ul>	Addressing
	<ul style="list-style-type: none"> <li>▶ Gateway properties</li> <li>▶ Send or Receive configuration properties</li> </ul>	Gateway
	delivery rules	Delivery Rules
	user security permissions	Security
6	Make the appropriate modifications and then click <b>OK</b> to save changes and exit the dialog box.	



---

# Internet E-mail Gateway Error Messages

---

<b>Contents</b>	• Introduction . . . . .	A - 2
	<b>Internet E-mail Gateway Error Messages . . . . .</b>	<b>A - 3</b>
	• Internet E-mail Gateway Error Messages . . . . .	A - 3
	• SCMailData Error Messages . . . . .	A - 5

---

# Overview

## Introduction

### In this appendix

This appendix explains Internet E-mail Gateway error messages and how to determine the action you should take when you receive an error message.

### Where error messages are located

The Internet E-mail Gateway error messages and other informational messages are noted on the Audit Log.

#### References

- See “Using the Audit Notification System” in the *Administration Guide* for more information about the Audit Log.
- See the “Error Messages” appendix in the *Administration Guide* for more information about other Gentran:Server error messages.
- See the “Error Messages” appendix in the *Gentran:Server for RosettaNet User’s Guide* for more information on RosettaNet-specific error messages.

The informational messages are dependent on the context of the program, and are intended to be self-explanatory.

### Error message numbers

The types of error messages that Internet E-mail Gateway uses are the following:

- **Internet E-mail Gateway** occur if the error was noted by the Internet E-mail Gateway.
- **SCMailData** occur if the error was noted by the SCMailData DLL.

### Source and component numeric values

This table lists the numeric values for the Internet E-mail Gateway message source and component values.

Source	Component
16 - Internet Gateways	<ul style="list-style-type: none"> <li>• 3 - Internet E-mail Gateway</li> <li>• 4 - SCMailData</li> </ul>

# Internet E-mail Gateway Error Messages

## Internet E-mail Gateway Error Messages

**Introduction** This topic provides you with the error messages that the Internet E-mail Gateway may write to the Gentran:Server Audit Log.

**Reference**

See “Using the Audit Notification System” in the *Administration Guide* for more information on the audit log.

**Messages** The Internet E-mail Gateway error messages are listed below by the message number and the error message text.

Msg ID	Message Text	Explanation/Your Action
16-3-2	The outgoing message in the mailbox message attachment is missing or has a length of 0. Internet E-mail Gateway outbound processing aborted.	<p><b>Explanation</b> There is no data to process.</p> <p><b>Your Action</b> None.</p>
16-3-3	Memory allocation error occurred. Internet E-mail Gateway outbound processing aborted.	<p><b>Explanation</b> Fatal error.</p> <p><b>Your Action</b> Stop and start the Gentran services. May also require a reboot of the PC.</p> <p><b>Reference</b> See your Windows documentation for more information on stopping and restarting services.</p>
16-3-4	Unable to read in the entire mailbox message attachment. Bytes read = [number of bytes read], Bytes available = [number of bytes available]. Internet E-mail Gateway outbound processing aborted.	<p><b>Explanation</b> Fatal error.</p> <p><b>Your Action</b> Restart of IIS services and then have your trading partner resend the message.</p> <p><b>Reference</b> See your Windows documentation for more information on stopping and restarting services.</p> <p style="text-align: right;">(Continued on next page)</p>

<b>(Contd) Msg ID</b>	<b>Message Text</b>	<b>Explanation/Your Action</b>
16-3-5	Unable to send message via e-mail to [destination E-mail address] using SMTP server [SMTP server name] at port [SMTP server port number]. Error = [SMTP error code].	<p><b>Explanation</b> The attempt to send the E-mail message failed.</p> <p><b>Your Action</b> Check the SMTP server settings for the E-mail gateway mailbox sending the message. Make sure that SMTP server is online.</p> <p><b>Reference</b> See <i>How to Modify Mailbox Properties</i> on page 2 - 16 for more information on checking the server settings.</p>
16-3-12	An error occurred during POP3 E-mail collection for mailbox [E-mail gateway mailbox name]. Error = [error code].	<p><b>Explanation</b> Unable to collect new E-mail messages from the POP3 server.</p> <p><b>Your Action</b></p> <ul style="list-style-type: none"> <li>• Check the E-mail server settings for the gateway mailbox in the mailbox configuration.</li> <li>• Verify that the E-mail server is online.</li> </ul> <p><b>Reference</b> See <i>How to Modify Mailbox Properties</i> on page 2 - 16 for more information on checking the mailbox configuration.</p>
16-3-14	New POP3 E-mail message collected but not delivered to [E-mail gateway mailbox name]. Error = [error code].	<p><b>Explanation</b> Mailbox Server Manager delivery error.</p> <p><b>Your Action</b> Restart the Gentrans services.</p> <p><b>Reference</b> See your Windows documentation for more information on stopping and restarting services.</p>

## SCMailData Error Messages

**Introduction** This topic provides you with the error messages that the SCSMailData program may write to the Gentran:Server Audit Log.

### Reference

See “Using the Audit Notification System” in the *Administration Guide* for more information on the audit log.

**Messages** The SCSMailData program error messages are listed below by the message number and the error message text.

Msg ID	Message Text	Explanation/Your Action
16-4-1	Unable to add recipient #[recipient] to message #[mailbox message number]. Error = [error text]. The message will not be sent from [mailbox name] to its recipients.	<p><b>Explanation</b> Message could not be sent to final recipient due to Mailbox Server Manager error.</p> <p><b>Your Action</b> Check the mailbox configuration.</p> <p><b>Reference</b> See <i>How to Modify Mailbox Properties</i> on page 2 - 16 for more information on checking the mailbox configuration.</p>
16-4-2	Unable to open message #[mailbox message number]. Error = [error text]. The message will not be sent from [source mailbox name] to its recipients.	<p><b>Explanation</b> Message could not be sent to final recipient due to Mailbox Server Manager error.</p> <p><b>Your Action</b> Restart your Gentran:Server services.</p> <p><b>Reference</b> See the <i>Administration Guide</i> for more information on starting Gentran:Server services.</p>
16-4-3	Unable to remove recipients from message #[mailbox message number]. Error = [error message text]. The message will not be sent from [source mailbox name] to its recipients.	<p><b>Explanation</b> Message could not be sent to final recipient due to Mailbox Server Manager error.</p> <p><b>Your Action</b> Restart your Gentran:Server services.</p> <p><b>Reference</b> See the <i>Administration Guide</i> for more information on starting Gentran:Server services.</p> <p style="text-align: right;">(Continued on next page)</p>

<b>(Contd) Msg ID</b>	<b>Message Text</b>	<b>Explanation/Your Action</b>
16-4-4	Unable to modify message #[mailbox message number]. Error = [error message text]. The message will not be sent from [source mailbox name] to its recipients.	<p><b>Explanation</b> Message could not be sent to final recipient due to Mailbox Server Manager error.</p> <p><b>Your Action</b> Restart your Gentran:Server services.</p> <p><b>Reference</b> See the <i>Administration Guide</i> for more information on starting Gentran:Server services.</p>
16-4-5	Unable to open mailbox [mailbox name]. Error = [error text].	<p><b>Explanation</b> Mailbox could not be opened.</p> <p><b>Your Action</b> Check the mailbox configuration.</p> <p><b>Reference</b> See <i>How to Modify Mailbox Properties</i> on page 2 - 16 for more information on checking the mailbox configuration.</p>
16-4-8	Unable to open or create and open the intermediate mailbox [mailbox name].	<p><b>Explanation</b> Mailbox could not be opened.</p> <p><b>Your Action</b> Check the mailbox configuration.</p> <p><b>Reference</b> See <i>How to Modify Mailbox Properties</i> on page 2 - 16 for more information on checking the mailbox configuration.</p>
16-4-10	Unable to open [mailbox name] mailbox.	<p><b>Explanation</b> Mailbox could not be opened.</p> <p><b>Your Action</b> Check the mailbox configuration.</p> <p><b>Reference</b> See <i>How to Modify Mailbox Properties</i> on page 2 - 16 for more information on checking the mailbox configuration.</p> <p style="text-align: right; color: green;">(Continued on next page)</p>

<b>(Contd) Msg ID</b>	<b>Message Text</b>	<b>Explanation/Your Action</b>
16-4-12	Gentran:Server mailbox service logon failed. Mercury ID/password problem. User needs to check Mercury service configuration.	<p><b>Explanation</b> Gentran:Server Mailbox service ID or password problem.</p> <p><b>Your Action</b> Check the configuration of the ID and password on the Gentran:Server Mailbox service.</p> <p><b>Reference</b> See your Windows documentation for more information on reconfiguring services.</p>
16-4-13	Gentran:Server mailbox service is not running.	<p><b>Explanation</b> The Gentran:Server Mailbox service is not running.</p> <p><b>Your Action</b> Restart the Mailbox service.</p> <p><b>Reference</b> See your Windows documentation for more information.</p>
16-4-14	Unable to open intermediate mailbox and destination mailbox [mailbox name]. Error = [error code].	<p><b>Explanation</b> Mailbox could not be opened.</p> <p><b>Your Action</b> Check the mailbox configuration.</p> <p><b>Reference</b> See <i>How to Modify Mailbox Properties</i> on page 2 - 16 for more information on checking the mailbox configuration.</p>
16-4-17	MessCreate failed when creating new mailbox message for incoming data. Error = [error text].	<p><b>Explanation</b> Unable to create new Mercury mailbox message.</p> <p><b>Your Action</b> Restart the Gentran services. You may need to call support.</p> <p><b>Reference</b> See the <i>Administration Guide</i> for more information on starting Gentran:Server services.</p> <p style="text-align: right; color: green;">(Continued on next page)</p>

<b>(Contd) Msg ID</b>	<b>Message Text</b>	<b>Explanation/Your Action</b>
16-4-18	AddRecipient failed when adding a recipient for the new mailbox message. Error = [error text].	<p><b>Explanation</b> Unable to create new Mercury mailbox message.</p> <p><b>Your Action</b> Restart the Gentran services. You may need to call support.</p> <p><b>Reference</b> See the <i>Administration Guide</i> for more information on starting Gentran:Server services.</p>
16-4-19	MessSend failed to send the new mailbox message to [mailbox name]. Error = [error text]	<p><b>Explanation</b> Unable to create new Mercury mailbox message.</p> <p><b>Your Action</b> Restart the Gentran services. You may need to call support.</p> <p><b>Reference</b> See the <i>Administration Guide</i> for more information on starting Gentran:Server services.</p>
16-4-20	[mailbox name] failed. Error = [error text]	<p><b>Explanation</b> General error message for debugging purposes.</p> <p><b>Your Action</b> None.</p>
16-4-22	CreateMailAttachment failed to attach the message data to the new mail message. Error = [error text].	<p><b>Explanation</b> Unable to create new Mercury mailbox message attachment.</p> <p><b>Your Action</b> Restart the Gentran services. You may need to call support.</p> <p><b>Reference</b> See the <i>Administration Guide</i> for more information on starting Gentran:Server services.</p>