

Gentran:Server[®] for Windows[®]

VDA User's Guide

Version 5.2

Sterling Commerce
An IBM Company

Copyright Notice

Gentran:Server for Windows

© Copyright 1995–2008
Sterling Commerce, Inc.
ALL RIGHTS RESERVED

Sterling Commerce Software Trade Secret Notice

THE GENTRAN:SERVER FOR WINDOWS SOFTWARE ("STERLING COMMERCE SOFTWARE") IS THE CONFIDENTIAL AND TRADE SECRET PROPERTY OF STERLING COMMERCE, INC., ITS AFFILIATED COMPANIES OR ITS OR THEIR LICENSORS, AND IS PROVIDED UNDER THE TERMS OF A LICENSE AGREEMENT. NO DUPLICATION OR DISCLOSURE WITHOUT PRIOR WRITTEN PERMISSION. RESTRICTED RIGHTS.

This documentation, the Sterling Commerce Software it describes, and the information and know-how they contain constitute the proprietary, confidential and valuable trade secret information of Sterling Commerce, Inc., its affiliated companies or its or their licensors, and may not be used for any unauthorized purpose, or disclosed to others without the prior written permission of the applicable Sterling Commerce entity. This documentation and the Sterling Commerce Software that it describes have been provided pursuant to a license agreement that contains prohibitions against and/or restrictions on their copying, modification and use. Duplication, in whole or in part, if and when permitted, shall bear this notice and the Sterling Commerce, Inc. copyright notice.

As and when provided to any governmental entity, government contractor or subcontractor subject to the FARs, this documentation is provided with RESTRICTED RIGHTS under Title 48 CFR 52.227-19. Further, as and when provided to any governmental entity, government contractor or subcontractor subject to DFARs, this documentation and the Sterling Commerce Software it describes are provided pursuant to the customary Sterling Commerce license, as described in Title 48 CFR 227-7202 with respect to commercial software and commercial software documentation.

These terms of use shall be governed by the laws of the State of Ohio, USA, without regard to its conflict of laws provisions. If you are accessing the Sterling Commerce Software under an executed agreement, then nothing in these terms and conditions supersedes or modifies the executed agreement.

Product names mentioned herein may be trademarks and/or registered trademarks of their respective companies. Gentran and Gentran:Server are registered trademarks of Sterling Commerce, Inc.

Third Party Software:

Portions of the Sterling Commerce Software may include products, or may be distributed on the same storage media with products, ("Third Party Software") offered by third parties ("Third Party Licensors").

Warranty Disclaimer

This documentation and the Sterling Commerce Software which it describes are licensed either "AS IS" or with a limited warranty, as set forth in the Sterling Commerce license agreement. Other than any limited warranties provided, NO OTHER WARRANTY IS EXPRESSED AND NONE SHALL BE IMPLIED, INCLUDING THE WARRANTIES OF MERCHANTABILITY AND FITNESS FOR USE OR FOR A PARTICULAR PURPOSE. The applicable Sterling Commerce entity reserves the right to revise this publication from time to time and to make changes in the content hereof without the obligation to notify any person or entity of such revisions or changes.

The Third Party Software is provided 'AS IS' WITHOUT ANY WARRANTY AND ANY EXPRESSED OR IMPLIED WARRANTIES, INCLUDING BUT NOT LIMITED TO, THE IMPLIED WARRANTIES OF MERCHANTABILITY, AND FITNESS FOR A PARTICULAR PURPOSE ARE DISCLAIMED. FURTHER, IF YOU ARE LOCATED OR ACCESSING THIS SOFTWARE IN THE UNITED STATES, ANY EXPRESS OR IMPLIED WARRANTY REGARDING TITLE OR NON-INFRINGEMENT ARE DISCLAIMED.

Working with VDA Standards

Contents	Overview.....	2
	▶ Introduction.....	2
	▶ VDA Support in Gentran:Server.....	4
	▶ Outbound VDA Envelope.....	5
	Tutorial.....	8
	▶ Tutorial Overview.....	8
	▶ How to Install the VDA Tutorial Data.....	9
	▶ Configuring Gentran:Server for VDA.....	10
	▶ How to Create a Trading Partner Mailbox.....	13
	▶ How to Import the Tutorial Partner Profile.....	15
	▶ How to Create an Outbound VDA Map.....	16
	▶ How to Compile and Register Tutorial Maps.....	18
	▶ How to Create an Outbound Relationship.....	19
	▶ How to Create an Inbound VDA Map.....	22
	▶ How to Create an Inbound Relationship.....	24
	▶ Processing a Sample Application File: Outbound.....	26
	▶ Processing a Sample Application File: Inbound.....	28

Overview

Introduction

Features of the VDA Standards

VDA, the German automotive standard, has several features that distinguish it from most other standards supported by Gentran:Server[®] for Windows[®]:

- It does not use a common set of interchange envelopes for all messages.
- It does not use functional groups.
- It uses a positional, nondelimited format.
- It uses looping but not composite elements.
- It uses a new control number (for the current transmission) and an old control number (for the previous one). As a result, control numbers do not need to be sequential.
- In some messages, it processes date formats differently.
- It uses a separate message to identify the communications protocol. A message is defined by a four-digit number, which doesn't appear in the data.
- The first record has six fields: version, customer, supplier, old transmission number, new transmission number, and transmission date.
- Each record begins with a three-byte record ID and a two-byte version number.

Intended audience

The intended audience for this document is the staff responsible for exchanging business documents using the VDA standards.

Prerequisite knowledge

The audience using this software should be familiar with Gentran:Server for Windows and the VDA standards.

Note

This manual is not intended to explain the VDA standard.

VDA Standards

The VDA standards are not included in the Gentrans Standards Database. Instead, Sterling Commerce provides VDA support for Gentrans:Server for Windows by providing file format definitions, or .ifd files, on a separate CD or diskette. You install the file format definitions using the install program on the CD or diskette. The install program places all the .ifd files, and build and break maps into the folder Gensrvnt\Maps\Vda; and all the .tpl files into the folder Gensrvnt\Transobj\Vda. The tutorial data files are stored in the Gensrvnt\Tutorial\Vda folder.

In addition, support for VDA requires the user to follow special procedures in setting up Trading Partners and in configuring Gentrans:Server. This document describes these steps and provides a tutorial for processing a sample VDA message.

References

- For more information on the VDA standard, access this web site.
<http://www.vda.de>
- For more information on ordering VDA recommendations, access this web site:
http://www.vda.de/de/service/sonstige_veroeffentlichungen/index.html

and select the “VDA-Empfehlungen” option.

VDA Support in Gentran:Server

Supported Message Types

Gentran:Server currently supports VDA message types 4905, 4906, 4907, 4908, 4913, and 4915.

To use VDA with Gentran:Server, you must make changes to three functions in the product: translation objects (compiled maps), Trading Partner definitions, and the Gentran:Server configuration. This section covers the changes to each of these functions.

VDA Maps

Sterling Commerce provides the following map files to support VDA messages. Similar files are used to support the other message types.

File Name	Description
BrkIvda.map	Interchange break map
BrkTvda.map	Transaction break map
BldIvda.map	Interchange build map
BldTvda.map	Transaction build map
*.ifd	VDA side of map

Sterling Commerce provides an .ifd file (for example, 4908.ifd) for each supported VDA message type. As support is provided for additional messages, Sterling Commerce will update BrkTvda.map, BrkIvda.map, BldIvda.map and BldTvda.map.

Note

The CDA version of a specified message is part of the name of the .IFD file. For example, the name of file 4905_ED4_0496.IFD indicates that this file contains the VDA structure of the VDA message 4905 of edition 4, that is dated from April 1996.

Headers and Trailers List

This table lists the headers and trailers for other supported VDA message types:

Message type	Header	Trailer
4905	511	519
4906	811	819
4907	911	919
4908	821	829
4913	711	719
4915	551	559

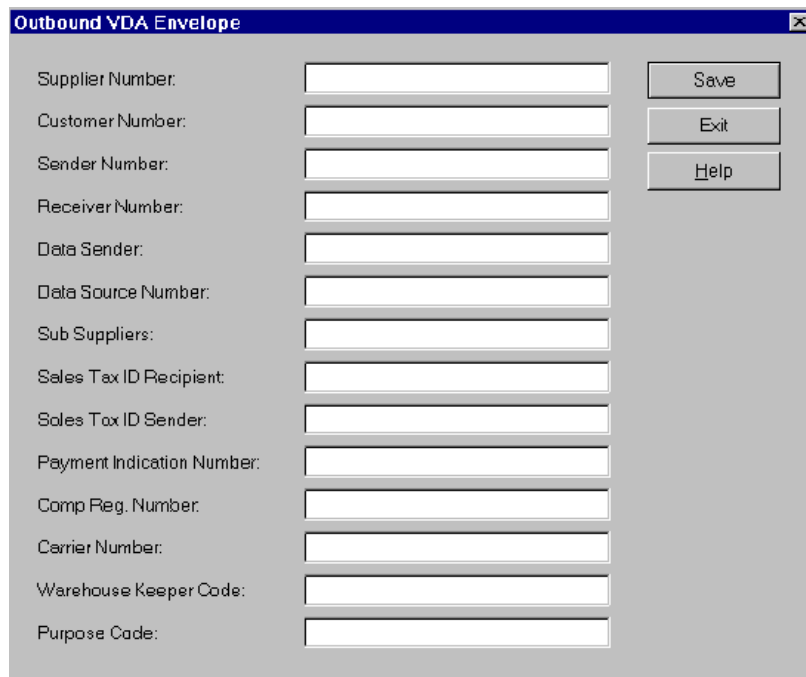
Outbound VDA Envelope

Introduction Use the Outbound VDA Envelope dialog box to assign values to be used with specific headers in VDA messages.

When to use Use the Outbound VDA Envelope dialog box when you want to provide information to be included in the outbound interchange envelope using the Trading Partner information, rather than through the application file.

Outbound VDA Envelope diagram

This diagram illustrates the Outbound VDA Envelope.



Fields, Field Length, and Description

This table describes the fields on the Outbound VDA Envelope dialog box, and the length and description of each field.

Dialog Box Field	Field Length	Description
Supplier Number	9	An identification number assigned to a supplier by a customer. All fields of a record structure that contain the field Supplier Number are subject to data privacy protection. Data entries are left justified.

(Continued on next page)

(Contd) Dialog Box Field	Field Length	Description
Customer Number	9	An identification number assigned to a customer by a supplier. All fields of a record structure that contain the field Customer Number are subject to data privacy protection. Data entries are left justified.
Sender Number	9	An identification number that the data sender arranges with the data receiver.
Receiver Number	9	An identification number that the data receiver arranges with the data sender.
Data Sender	9	An identification number that the data sender arranges with the data receiver.
Data Source Number	9	An identification number that the data source arranges with the data receiver.
Sub Suppliers	9	An identification number that is assigned to a sub supplier by a customer.
Sales Tax ID Recipient	20	An identification number of the national tax office for the recipient. This field is mandatory for delivery of goods within the European Union. Data entries are left justified.
Sales Tax ID Sender	20	An identification number of the national tax office for the sender. This field is mandatory for delivery of goods within the European Union. Data entries are left justified.
Payment Indication Number	6	A link between data transmission payment notification and real payments received. This includes the Check number and remittal number. Data entries are left justified.
Comp. Reg. Number	25	An identification of the National Register of Business Names (Commercial Register) for the supplier. This field is mandatory for some European countries.
Carrier Number	9	The carrier data number of VDA message 4920. If relevant, the contents of this field will be identical to the contents of the field in record type 712, position 13.
Warehouse Keeper Code	1	A code that identifies the person who created the interchange.
Purpose Code	2	Not used in this release.

Fields and Message Headers

This table shows the fields of the Outbound VDA Envelope and the VDA message headers that the field is used with. An X indicates that the field is used with that VDA message, and is required on the Outbound VDA Envelope dialog box.

Dialog Box Field	Message Release Date						
	4905 1088	4905 0496	4906 0593	4907 0893	4908 0596	4913 1094	4915 1189
Supplier Number	X	X	X	X	X		X
Customer Number	X	X	X	X	X		X
Sender Number							
Receiver Number							
Data Sender						X	
Data Source Number						X	
Sub Suppliers						X	
Sales Tax ID Recipient			X		X		
Sales Tax ID Sender			X		X		
Payment Indication Number				X			
Comp Reg. Number					X		
Carrier Number						X	
Warehouse Keeper Code						X	
Purpose code							

Tutorial

Tutorial Overview

In this Tutorial

This tutorial provides an example of how to set up Gentran:Server for Windows with VDA message 4908. In this tutorial, you will

- Install the VDA Tutorial files, maps, and file format definitions
 - Configure Gentran:Server for use with VDA standards
 - Set up a Trading Partner mailbox
 - Import a VDA Trading Partner
 - Compile and register maps
 - Process a sample message, both inbound and outbound
-

How to Install the VDA Tutorial Data

Before you begin Before you begin installing the VDA Tutorial data, ensure that you have installed Gentran:Server for Windows Release 5.2.

Procedure Use this procedure to install the VDA tutorial data onto your Gentran:Server system.

Step	Action
1	Insert the CD or diskette containing the VDA Tutorial data, maps, and file format definitions into the appropriate disk drive.
2	Start Windows Explorer and browse to the drive where you inserted the CD or diskette containing the VDA Tutorial data.
3	<ul style="list-style-type: none">▶ If you are installing from a diskette, double-click Setup.▶ If you are installing from a CD, browse to the VDA folder and then double-click Setup. <p>System Response Windows launches the installation program.</p>
4	Click Next . System Response The Choose Destination Location dialog box is displayed.
5	Click Next to accept the default installation location.
6	Click OK to complete the installation procedure.

Configuring Gentran:Server for VDA

Before you Begin

Before you begin the tutorial, create a folder called Vda_out under the \Gensrvnt folder.

How to Register the Tutorial Translation Objects

Use this procedure to register the translation objects provided with the tutorial data.

Step	Action
1	Start Gentran:Server and select Translation Objects from the View menu. System Response The EDI Translation Objects dialog is displayed.
2	Click New to open the Register Translation Object dialog box.
3	Browse to the Gensrvnt\Transobj\Vda folder and select the following files: <ul style="list-style-type: none"> ▶ BrkIvda.tpl ▶ BrkTvda.tpl ▶ BldIvda.tpl ▶ BldTvda.tpl
4	Click Open . The translation objects are now registered and can be used.
5	Click New to open the Register Translation Object dialog box.
6	Browse to the Gensrvnt\Tutorial\Vda folder and select the following files: <ul style="list-style-type: none"> ▶ VDA4908_IN.tpl ▶ VDA4908_OUT.tpl ▶ Sys_Import_Header.tpl
7	Click Open . The translation objects are now registered and can be used.

How to Set the Import Path

Use this procedure to set the Gentran:Server Import Path.

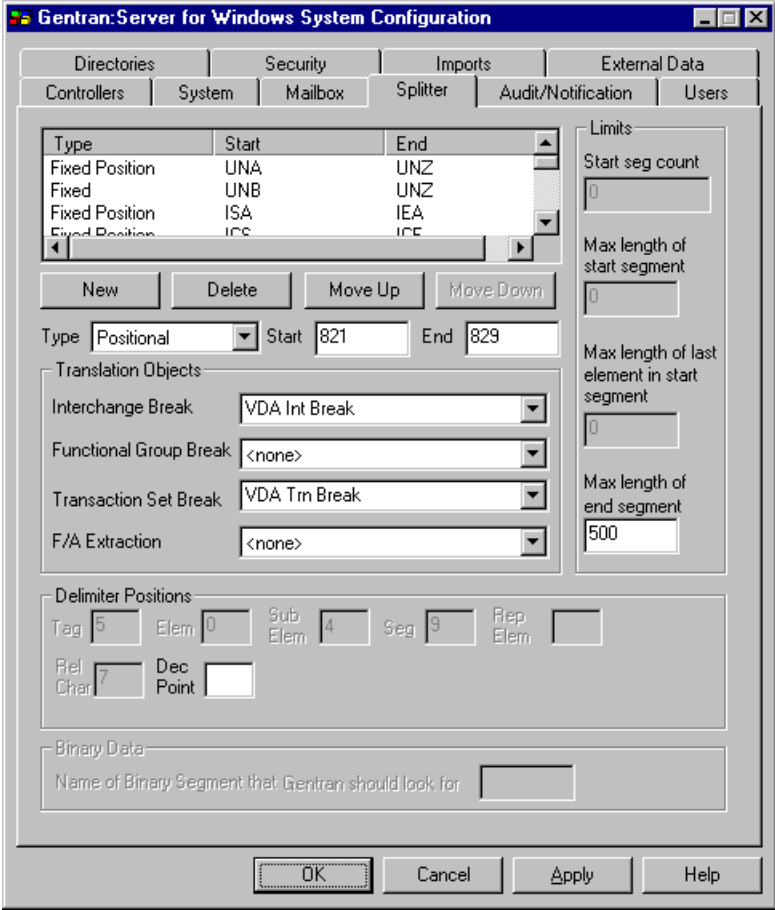
Step	Action
1	From the Windows Start menu, point to Gentran:Server and select Gentran Server Configuration .

Step	Action
2	Select the Imports tab.
3	In the File Path box, enter c:\gensrvnt\tutorial\vda*.txt .
4	Select Sys Header – VDA from the Translation Object list.
5	Click Move Up so that the path you typed is moved to the top of the list and thus takes priority.

How to Create a New Splitter Entry

Use this procedure to create a new entry in the splitter table.

Step	Action
1	From the Windows Start menu, point to Gentran:Server and select Gentran Server Configuration .
2	Select the Splitter tab, and click New .
3	Select Positional from the Type list.
4	In the Start box, enter 821 , the number for the header record in message 4908.
5	In the End box, enter 829 , the number for the trailer record in message 4908.
6	Select VDA Int Break from the Interchange Break list.
7	Select VDA Trn Break from the Transaction Set Break box.
8	Enter 500 in the Max length of End segment box. <i>(Continued on next page)</i>

(Contd) Step	Action
9	<p>Click Apply.</p> <p>System Response The dialog box should now look like this.</p> 
10	<p>Click OK to save your changes and leave Configuration.</p> <p>Note You must repeat this procedure for every VDA message type that you intend to use.</p>

How to Create a Trading Partner Mailbox

Procedure Use this procedure to create a Trading Partner mailbox.

Step	Action
1	Select Mailbox from the Gentran:Server Tools menu. System Response The Mailbox Server Manager is displayed.
2	Double-click Gentran:Server Mailbox to expand it. Note If the mailbox doesn't expand, the server has not been registered. To register it, follow these steps: 1. Right-click Gentran:Server Mailbox and select Register Server. The Register Server dialog box is displayed. 2. Enter the machine name of the of the primary system controller and click OK .
3	Double-click the name of the machine.
4	Right-click Mailboxes and select Create . System Response The Create Mailbox Wizard is displayed.
5	Name the mailbox VDA Outfile . Note It is normal, but not required, to identify the partner in the mailbox. The sample VDA partner has not been created yet, so do not identify the partner. System Response The second Create Mailbox Wizard dialog box is displayed.
6	For the purposes of this tutorial, select Yes, use this mailbox as a gateway , and select File System as the type.
7	Click Next to see the summary screen, where you can verify the information for this mailbox.
8	Click Finish . System Response The File System Gateway properties dialog is displayed. <i>(Continued on next page)</i>

(Contd) Step	Action
9	Select the Extraction tab to define the folder to which outbound VDA files are extracted.
10	Select Extract files from this mailbox , and enter the following path in the box below it: c:\gensrvnt\vda_out .
11	Select Append all messages to a single file , and enter vda4908.out in the box below it.
12	Click OK to complete the process.

How to Import the Tutorial Partner Profile

Introduction The Partner Profile defines the parameters that control the processing and structure of inbound and outbound data. For this tutorial, we have provided a sample Partner Profile.

Procedure Use this procedure to import the Partner Profile provided for this tutorial.

Step	Action
1	Select Partner from the Desktop. System Response The Partner Editor is displayed.
2	Click Import . System Response The Import File Select dialog box is displayed.
3	Browse to the Gensrvnt\Tutorial\Vda folder, select VDAPART.PAR and click Open . System Response The Import dialog box is displayed.
4	Verify that the Partner to Import box shows VDAPART and click Save . System Response The system imports the partner details and displays the Partner Editor dialog box. Note Gentran:Server prompts you for any additional information that it needs by displaying the appropriate Partner Editor dialog box.
5	Click Save when you have finished entering information. System Response The system displays the message “Import Process Complete. Please note any warnings or errors.”
6	Click OK .
7	Click Exit .

How to Create an Outbound VDA Map

Introduction

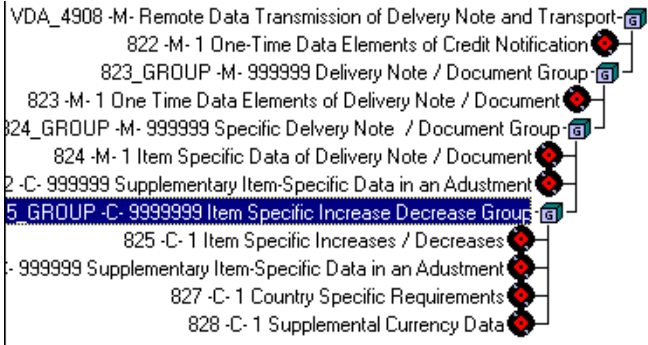
The normal procedure for using VDA requires that when you create a new map for outbound messages, you import an .ifd file for the output side of the map. For the purpose of this tutorial you will use a map that we have already created.

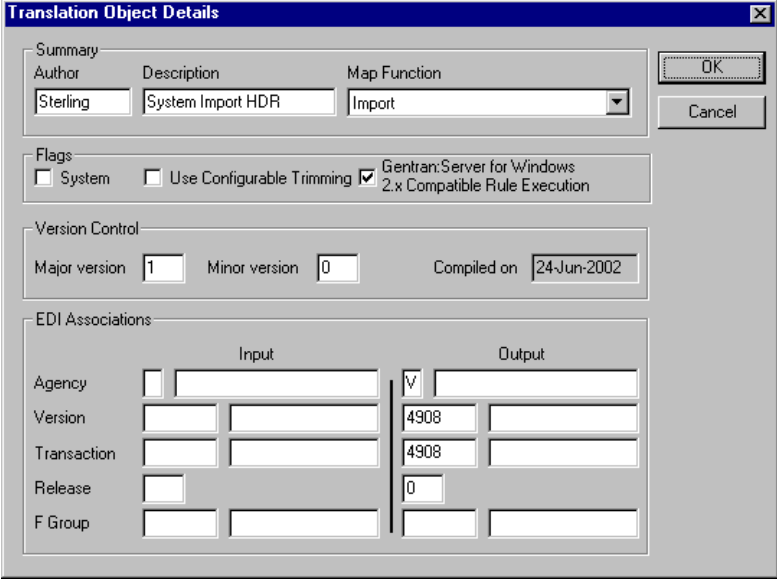
Note

The CDA version of a specified message is part of the name of the .IFD file. For example, the name of file 4905_ED4_0496.IFD indicates that this file contains the VDA structure of the VDA message 4905 of edition 4, that is dated from April 1996.

Procedure

Use this procedure to create an Outbound VDA Map.

Step	Action
1	Open Gentrans:Server Application Integration.
2	Select Open from the File menu.
3	<p>Browse to the Gensrvnt\Tutorial\Vda folder and select VDA4908_Out.map.</p> <p>System Response The Output side of the map now looks like this:</p> 
4	<p>Select the top row of the left side of the map, and select Expand All from the View menu.</p> <p style="text-align: right;">(Continued on next page)</p>
5	<p>Repeat Step 4 for the right side of the map.</p> <p>Note If you do not see the link lines, select Preferences from the Options menu and click the Links tab. Select the Show links to or from all visible elements option.</p>

(Contd) Step	Action
6	<p>Select Details from the Edit menu.</p> <p>System Response The Translation Object Details dialog box is displayed.</p>  <p>Note The entries in the Output section serve as the basis for defining the Trading Partner information.</p>

How to Compile and Register Tutorial Maps

Supplied Tutorial Maps

The following maps are supplied with Gentran:Server for use with this tutorial:

Map	Description
BrkIvda.map	Interchange break map
BrkTvda.map	Transaction break map
BldIvda.map	Interchange build map
BldTvda.map	Transaction build map

Before you can use these maps, you must compile and register them.

Procedure

Use this procedure to compile and register the tutorial maps.

Step	Action
1	To compile the maps, start Gentran:Server - Application Integration.
2	Select Open from the File menu.
3	Select a .map file and click OK .
4	Select Compile from the File menu. Note The compiled maps (*.tpl files) are saved in the \TransObj folder. Comment You are now ready to register the translation objects.
5	Select Translation Objects from the Gentran:Server View menu. Comment The Translation Objects dialog box lists the templates that are already registered with Gentran:Server.
6	Click New to open the Register Translation Object dialog box.
7	Select the files to register, and click Open . Note You can Control-click filenames to select multiple entries, or Shift-click to select contiguous entries. The translation objects are now registered and can be used.

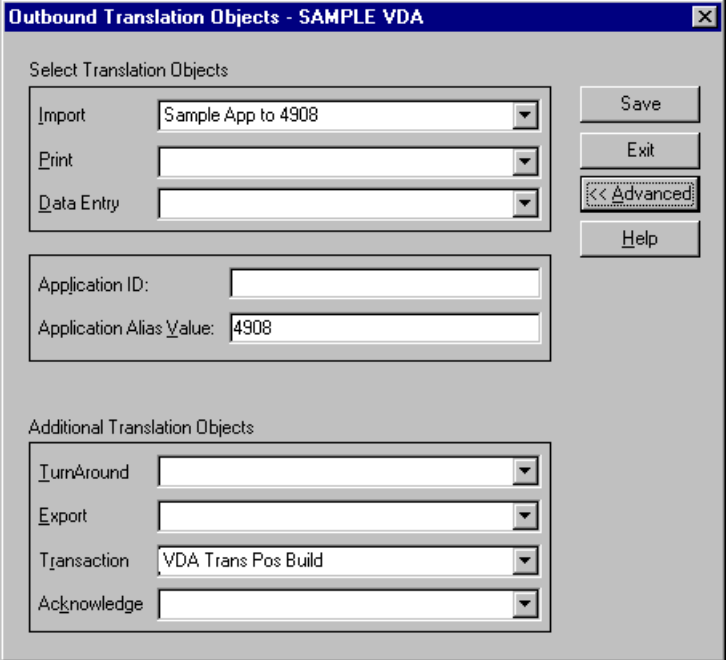
How to Create an Outbound Relationship

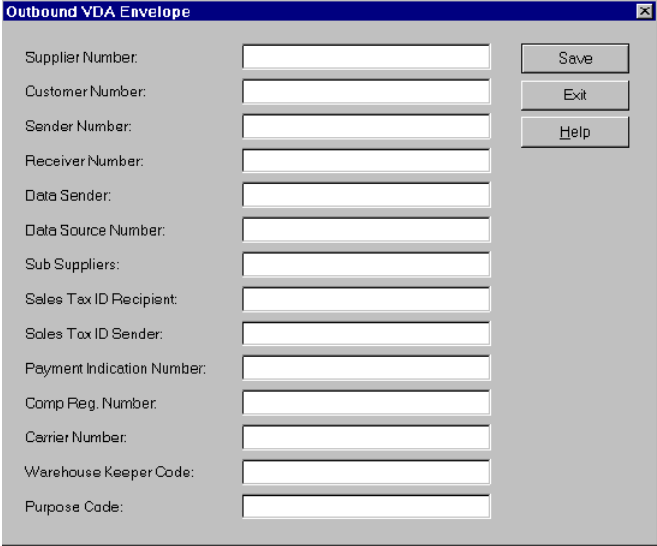
Introduction You need to identify your partner with the outbound translation objects that you have registered.

Procedure Use this procedure to create an outbound Trading Partner Relationship.

Step	Action
1	In Gentran:Server, click Partners to display the list of partners.
2	From the Partner Editor , click New .
3	In the Profile ID box, enter VDAPART .
4	In the Name box, enter VDATEST .
5	In the EDI Code box and the Application Code box, enter VDATEST .
6	In the Mailbox list, select VDA Outfile or the name you gave when you created a mailbox.
7	Click Save to save the information and return to the Partner Editor.
8	Select the new partner and click Outbound to begin setting up the outbound relationship. System Response The Outbound Relationship dialog box is displayed.
9	Click New
10	Enter Outbound 4908 in the Enter new description: box.
11	Click Save to return to the Outbound Relationship dialog box.
12	Select V-VDA from the Standard list.
13	Select 4908 from the Version and Transaction Set lists. Note These items are available here because you registered maps that contain this information in the Translation Objects Details dialog.
14	Click Groups and select <none> .
15	Click Translation to define the Outbound Translation Objects dialog box.
16	Select Sample App to 4908 from the Import list.

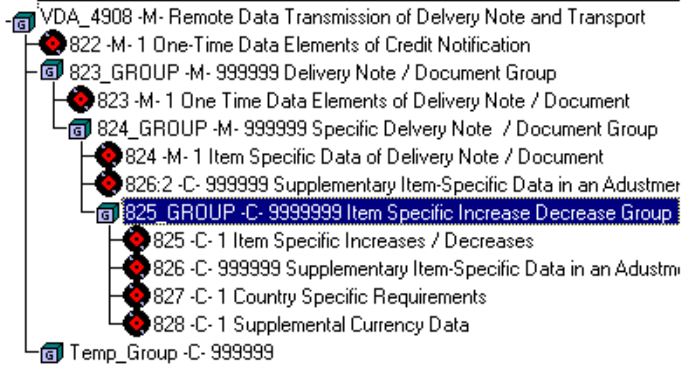
(Continued on next page)

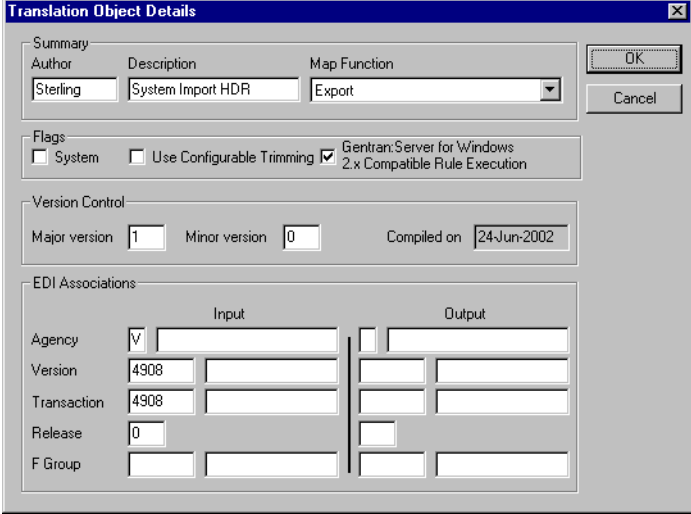
(Contd) Step	Action
17	<p>Select VDA Trn Build from the Transaction list.</p> <p>System Response The Outbound Translation Objects dialog box should now look like this.</p> 
18	Click Save to save the information and return to the Outbound Relationship dialog box.
19	Click Interchanges from the Outbound Relationship dialog box to create an Outbound Interchange Entry.
20	Click New from the Outbound Interchange Select dialog box to create a new Outbound Interchange.
21	<p>Notice the value in the Interchange Transl. Obj. box.</p> <p style="text-align: right; color: green;">(Continued on next page)</p>

(Contd) Step	Action
22	<p>Click Envelope.</p> <p>System Response The following dialog box is displayed.</p> 
23	<p>Complete the fields as necessary and click Save.</p> <p>Reference See <i>Outbound VDA Envelope</i> on page 5 for more information about how to complete this dialog box.</p>
24	<p>Click Save until you have closed all dialog boxes.</p> <p>Note If you have problems setting up the partner, import the sample partner file (Partners\vdapart.par) included for use with this tutorial. Make sure you have registered all the compiled templates first.</p>

How to Create an Inbound VDA Map

Procedure Use this procedure to open, compile, and register the maps for inbound data.

Step	Action
1	Open Gentrans:Server Application Integration.
2	Select Open from the File menu.
3	<p>Browse to Gensrvnt\Tutorial\Vda folder and select VDA4908_IN.map.</p> <p>System Response The Input side of the map now looks like this:</p> 
4	<p>Select Compile from the File menu, and save the file as a .tpl file in the \TransObj folder.</p> <p style="text-align: right;">(Continued on next page)</p>

Step	Action
5	<p>To view the Translation Object Details, select Details from the Edit menu.</p> <p>System Response The Translation Object Details dialog box should look like this.</p> 
6	<p>Register the translation object.</p> <p>Reference</p> <p>See <i>How to Compile and Register Tutorial Maps</i> on page 18 for more information.</p>

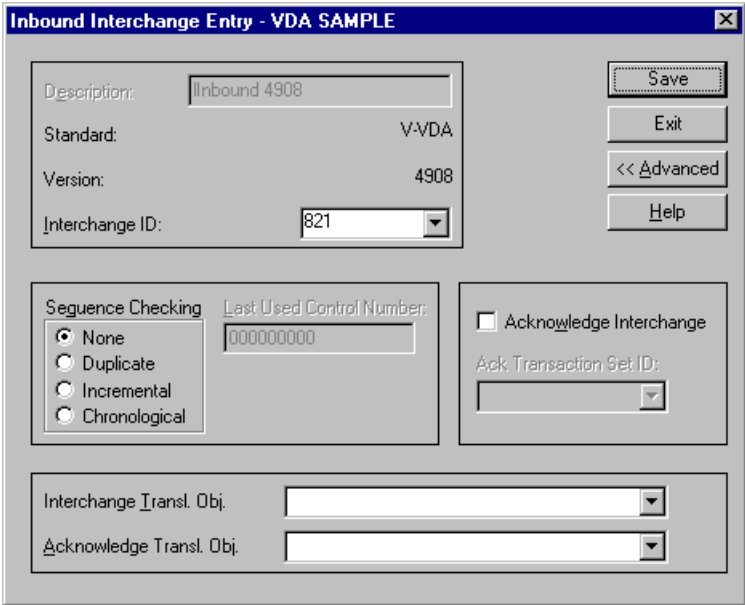
How to Create an Inbound Relationship

Introduction You need to identify your trading partner with the inbound translation objects that you created, compiled, and registered.

Procedure Use this procedure to create an inbound Trading Partner Relationship.

Step	Action
1	From the Partner Editor, select the VDA partner that you created earlier and click Inbound .
2	Click New .
3	Enter Inbound 4908 in the Enter new description box.
4	Click Save to return to the Inbound Relationship dialog box.
5	Select Inbound 4908 from the Relationship Description list.
6	Select V-VDA from the Standard list.
7	Select 4908 from the Version and Transaction Set lists.
8	Click Groups and select <none> .
9	Click Interchanges . System Response The Inbound Interchange Entry dialog box is displayed.
10	Click Translation to define the Inbound Translation Objects.
11	Select 4908 to Positional from the Export File list.
12	Select VDA Trn Break from the Transaction list.
13	Click Save to save the information and return to the Inbound Relationship dialog box.
14	Click Interchanges from the Inbound Relationship dialog box to create an Inbound Interchange Entry.
15	Click New to create a new Inbound Interchange. System Response The following dialog box is displayed.

(Continued on next page)

(Contd) Step	Action
16	<p>Select 821 from the Interchange ID list.</p> <p>Note</p> <p>821 is the header record in message 4908.</p> <p>System Response</p> <p>The Inbound Interchange Entry dialog box should look like this.</p> 
17	Click Save until you close all Partner Editor dialog boxes.

Processing a Sample Application File: Outbound

Introduction

The purpose of this section is to test your work in this tutorial by processing a file and sending it through the Gentran:Server system. Briefly, you will import an application file, post it, and send it.

We have provided a simple application file (Gensrvnt\Tutorial\Vda\VDA4908.vda) to serve as the basis for our test.

Procedure

Use this procedure to test outbound processing.

Step	Action
1	Open Gentran:Server and click Workspace .
2	Click Import to import the application file.
3	Use the Application Files to Import dialog box to select the file VDA4908.vda in the Gensrvnt\Tutorial\Vda folder, and click Open . After a few seconds, the imported file appears in the Workspace.
4	To view the imported file, select it, click View , leave Raw EDI selected on the View Choice dialog box, and click OK . You can see that it has been translated to VDA format.
5	In the Workspace dialog box, select the imported file and click Post to send it to the Out box.
6	Click Close to close the Workspace.
7	Click Out on the Gentran:Server desktop. System Response The Out Documents Summary is displayed.
8	Select VDAPART 4908 and click View to open the document-level Out Documents dialog box.
9	Select the document you posted, and click Send to send it to the Out Drawer.
10	After the communications session is opened and the document is sent, click Close twice to close both of the Document Summary dialog boxes. (Continued on next page)

(Contd) Step	Action
11	Click Out Drawer on the Gentran:Server desktop. System Response The Out Drawer Summary dialog box is displayed.
12	Select VDAPART 4908 and click View to open the document-level Out Drawer dialog box.
13	As indicated in the Status column, the VDAPART 4908 document has been sent.

Processing a Sample Application File: Inbound

Introduction To test inbound processing, you will process the file that you transmitted and receive it as an inbound VDA file.

Procedure Use this procedure to process a VDA file and export it to your application format.

Step	Action
1	Open Gentrans:Server and select Process File from the Commands menu.
2	In the Process File dialog box, select file VDA4908i.txt from the Gensrvnt\Tutorial\Vda folder and click Open . System Response The CommPost dialog box is displayed, indicating the progress of the translation.
3	Click In to open the In Documents Summary dialog box.
4	Select the VDAPART 4908 line and click View to open the document-level In Documents dialog box.
5	Select the VDAPART 4908 document and click Export . System Response The Select Export Method dialog box is displayed.
6	Select Export to Single File.
7	Select the folder and file name for the export from the Choose file to Export document dialog box. System Response A dialog box is displayed to show progress as Gentrans:Server translates the VDA file into the application format.