

IBM Sterling Gentran:Server for Microsoft Windows

HTTP Gateway Configuration Guide

Version 5.3



Copyright

This edition applies to the 5.3 Version of IBM® Sterling Gentran:Server® for Microsoft Windows and to all subsequent releases and modifications until otherwise indicated in new editions.

Before using this information and the product it supports, read the information in Notices on page N-1.

Licensed Materials - Property of IBM

IBM® Sterling Gentran:Server® for Microsoft Windows

© Copyright IBM Corp. 1996, 2011. All Rights Reserved.

US Government Users Restricted Rights - Use, duplication or disclosure restricted by GSA ADP Schedule Contract with IBM Corp.

Table of Contents

Preface	About This Guide	
	▶ Introduction	vi
	▶ Description of Contents	vii
	▶ Getting Support	viii
Chapter 1	HTTP Gateway Overview	
	▶ Overview	1-2
	▶ HTTP Gateway	1-3
	▶ HTTP Gateway Mailboxes	1-5
	▶ HTTP Gateway Flow	1-6
Chapter 2	Configuring Communications	
	▶ Introduction	2-10
	Properties	2-11
	▶ Mailbox Properties	2-11
	Procedures	2-18
	▶ Configuration process	2-18
	▶ How to Create HTTP Gateway Mailboxes	2-20
	▶ How to Modify Mailbox Properties	2-27
Appendix A	HTTP Gateway Database Table Layout	
	▶ Introduction	A-2
	▶ DeliveryQuery_tb	A-3
Appendix B	HTTP Gateway Error Messages	
	▶ Introduction	B-2
	HTTP Gateway Error Messages	B-3
	▶ Delivery Query Messages	B-3
	▶ HTTP Gateway Error Messages	B-6
	▶ SCMailData Error Messages	B-8

Notices

About This Guide

Contents

- ▶ Introductionvi
 - ▶ Description of Contentsvii
 - ▶ Getting Supportviii
-

Introduction

Overview

This manual contains the tasks you must follow to:

- configure the IBM® Sterling Gentran:Server® for Microsoft Windows HTTP Gateway
 - create HTTP Gateway mailboxes
-

Intended audience

The intended audience for this manual is Sterling Gentran:Server system administrators.

Prerequisite knowledge

The audience using this software should be familiar with:

- Your operating system
- MIME headers

Reference

See this URL for more information on MIME headers:

<http://www.ietf.org/rfc/rfc2045.txt>

Description of Contents

Introduction

This guide is organized into the tasks that you complete when configuring communications for the HTTP Gateway.

Organization of chapters

The guide is organized into chapters. A brief description of each chapter's contents follows.

- About This Guide explains the content, organization, and conventions in this guide.
 - HTTP Gateway Overview provides a high-level overview of the HTTP Gateway.
 - Configuring Communications explains the process for configuring HTTP Gateway communications. This chapter also provides the procedures you must follow to configure your HTTP Gateway Mailboxes.
-

Getting Support

How To Get Help

IBM® Sterling Customer Center provides a wealth of online resources that are available around the clock to enrich your business experience with IBM® Sterling Gentran®. By using Sterling Customer Center, you gain access to many self-support tools, including a Knowledge-Base, Documentation, Education, and Case Management. Access this site at: Sterling Customer Center. (<http://customer.sterlingcommerce.com>)

Once logged in, select **Support Center** from the top navigation menu, and then locate Sterling Gentran product-specific support information from the left navigation menu.

Additionally, our Customer Support Reference Guide outlines our support hours, contact information, and key information that will enhance your support experience with us. For detailed information about Customer Support, please refer to the Customer Support Reference Guide accessible from the login page. (<http://customer.sterlingcommerce.com>)

HTTP Gateway Overview

Contents	▶ Overview	1 - 2
	▶ HTTP Gateway.	1 - 3
	▶ HTTP Gateway Mailboxes.	1 - 5
	▶ HTTP Gateway Flow	1 - 6

Overview

In this chapter

This chapter provides you with a high-level overview of the Sterling Gentran:Server HTTP Gateway.

What is HTTP?

HTTP (Hypertext Transfer Protocol) is an application-level protocol which allows distributed, collaborative, hypermedia information systems to function independently of the data they transfer.

What is HTTPS?

HTTPS (Hypertext Transfer Protocol Secure) is a secure version of HTTP.

What is a Gateway?

A Gateway is a software component that controls the transmission of messages between two parties. The gateway is responsible for using the correct protocols to transfer messages between the sender and receiver.

What is a Mailbox?

A mailbox stores messages until those messages are transferred to a recipient application. You are responsible for creating mailboxes. When you create mailboxes, you associate the mailbox with a gateway. The properties that you define for each mailbox determine how messages are transferred from or to your application via the gateway.

HTTP Gateway

Introduction

Sterling Gentran:Server supports multiple transfer protocols. The HTTP Gateway facilitates the transfer of inbound and outbound messages with the Mailbox Server via the Hypertext Transfer Protocol (HTTP) and the Secure HTTP via SSL.

The HTTP Gateway supports the following protocols:

- HTTP
- Hypertext Transfer Protocol Secure (HTTPS) (40 bit and 128 bit encryption)

Note

All messages sent and received via the HTTP Gateway are sent via HTTP POST requests.

Use with HTTP Message Forwarder

By using the HTTP Gateway and the HTTP Message Forwarder in concert, you can receive and send messages of any format from outside your enterprise using the HTTP or HTTPS transport methods in environments with double firewalls.

Internet servers supported

The HTTP Gateway supports the following Internet servers:

- Microsoft Internet Information Server 4.0
- Microsoft Internet Information Server 5.0

Setting up an IIS virtual directory

You need to manually set up one virtual directory for the HTTP Gateway. The actual directory for this virtual directory should be the your Sterling Gentran:Server Bin directory (usually c:\gensrvnt\bin). You must set the access permissions for this virtual directory to: **Read, Run scripts, and Execute**.

Reference

Refer to your Microsoft IIS documentation for more information on creating this virtual directory.

Steps if using SQL Server in a Single Workstation environment

If you are running the HTTP Gateway in a Single Workstation environment in which SQL Server is your database, you must add the following user to your GentranDatabase: IWAM_pcName. You must also manually grant this user SELECT access to the DeliveryQuery_tb database table. You do not need to grant any other access to this ID.

Example

If the machine name is "GENSYS," the IWAM_pcName user is "IWAM_GENSYS" (no quotes).

Reference

See your SQL Server documentation for more information on how to perform these tasks.

**Steps if using
SQL Server in a
Distributed
System
environment**

If you are running the HTTP Gateway in a Distributed System environment in which SQL Server is your database, you must edit the security properties for the virtual directory to give “anonymous access” to the Domain ID that has access to the machine on which your SQL Server GentranDatabase resides.

Reference

See your Microsoft documentation for more information on how to perform these tasks.

HTTP Gateway Mailboxes

Introduction

You must configure properties for HTTP mailboxes you create.

Reference

See *Configuring Communications*, chapter 2 of this guide, for more information about configuring the HTTP mailboxes.

Default mailbox

By default, any message which does not contain MIME header information or which contain unrecognized MIME header information will be discarded. If you want to keep these type of messages, you must create an HTTP Gateway mailbox and set the three MIME header tag/value pairs to null strings. Then, the HTTP Gateway will attempt to find this mailbox and deliver to it any message with unrecognized or missing MIME header information.

HTTP Gateway Flow

Inbound message flow

This table describes the inbound flow of messages through the HTTP Gateway.

Stage	Process
1	An HTTP POST is received into IIS via the Internet or Intranet.
2	IIS forwards the POST to the SCDeliveryQuery.DLL, an ISAPI extension which functions at the inbound portion of the gateway.
3	SCDeliveryQuery.DLL uses the DeliveryQuery_tb database table to locate the Sterling Gentran:Server HTTP Gateway mailbox where the message belongs. Note At this point, the system does MIME tag/value comparisons.
4	The incoming POST data (with the HTTP POST request header information prepended) is delivered to the appropriate HTTP Gateway mailbox Inbox.
5	The HTTP Gateway mailbox delivers the message to the recipients configured for that mailbox.

Outbound message flow

This table describes the outbound flow of messages through the HTTP Gateway.

Stage	Process
1	An outbound message in its final format is generated and placed in Inbox of HTTP Gateway mailbox.
2	The Sterling Gentran:Server Mailbox service passes the message to the HTTP Gateway.
3	The HTTP Gateway uses the URL which is configured for that mailbox to send the message via an HTTP POST using the outermost MIME as the HTML post request header. HTTP or HTTPS (SSL) is used to transmit the request.
4	An HTTP status code is returned indicating the success or failure of the HTTP POST request.

	Process
5	<p>If the HTTP POST request is successful (which usually means that an HTTP 200 status code was returned), the HTTP Gateway will update the status of the outgoing message to read.</p> <p>If the HTTP POST request is not successful, the status of the outgoing message will remain unread. In either case, an audit log message is written to the Sterling Gentran:Server Audit Log.</p>

Message destination

The destination of the message is any valid URL.

Message status

When a message is sent to the HTTP Gateway, the message status is changed to “Sent.” When the HTTP Gateway submits a process to the HTTP server, the message status is changed to “Sent Third-Party.” When the HTTP process completes, the message status is changed to “Read” (if the process was successful) or to “Unread” (if the process was unsuccessful.).

Related topic

See “Tracking Messages” in the *IBM® Sterling Gentran:Server® for Microsoft Windows Communications User Guide* for additional information.

Configuring Communications

Contents	▶ Introduction	2 - 10
	Properties	2 - 11
	▶ Mailbox Properties	2 - 11
	Procedures	2 - 18
	▶ Configuration process	2 - 18
	▶ How to Create HTTP Gateway Mailboxes	2 - 20
	▶ How to Modify Mailbox Properties	2 - 27

Introduction

In this chapter This chapter describes the tasks that you must complete to configure your HTTP Gateway and HTTP Gateway Mailbox.

Note

There are no gateway-level properties to configure for the HTTP Gateway.

Key Terms This table describes key terms used in this chapter.

Term	Description
Gateway	Gateways are software components that control the transmission of messages between two parties. The gateway is responsible for using the correct protocols to transfer messages between the sender and receiver.
HTTP	HTTP (Hypertext Transfer Protocol) is an application-level protocol which allows distributed, collaborative, hypermedia information systems to function independently of the data they transfer.
HTTPS	HTTPS (Hypertext Transfer Protocol Secure) is a secure version of HTTP.
Mailbox	A folder or set of folders used to store messages.

Properties

Mailbox Properties

Introduction The Mailbox Properties dialog box enables you to define the properties of the mailbox.

Addressing tab diagram This diagram illustrates the Addressing tab of the Mailbox Properties dialog box.

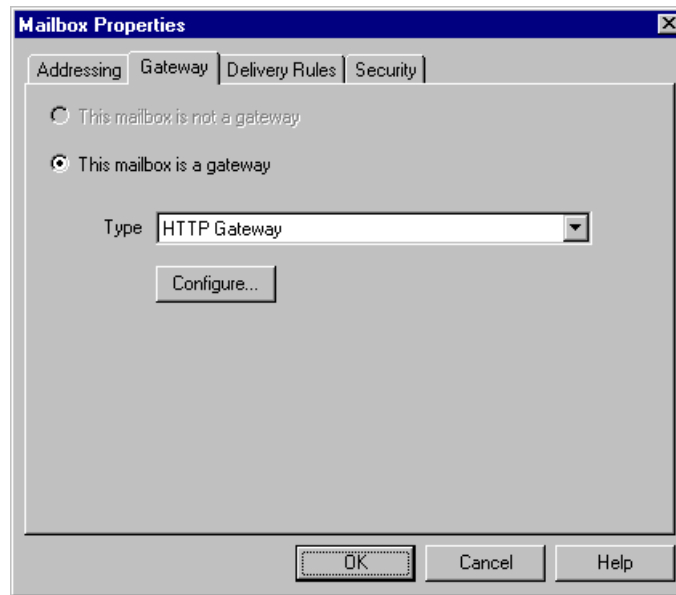


Addressing tab parts and functions This table describes the parts of the Addressing tab of the Mailbox Properties dialog box and their functions.

Part	Function
Name	Defines the name of the mailbox.
Gentran Email address	Defines the Sterling Gentran:Server E-mail address for messages sent from the mailbox.
OK	Saves changes; exits dialog.
Cancel	Closes dialog without saving changes.
Help	Accesses online help.

Gateway tab diagram

This diagram illustrates the Gateway tab of the Mailbox Properties dialog box.



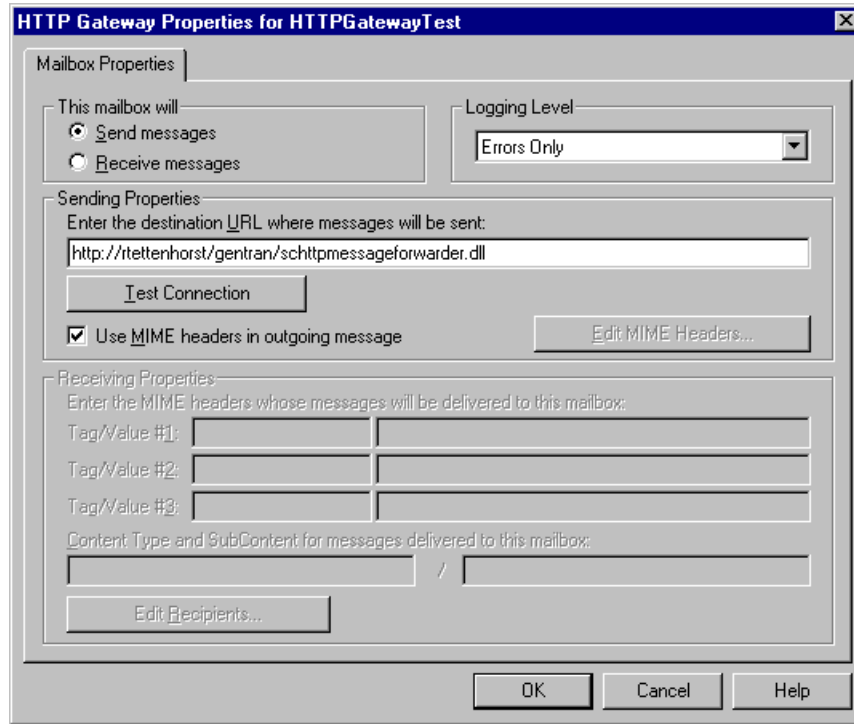
Gateway tab parts and functions

This table describes the parts of the Gateway tab of the Mailbox Properties dialog box and their functions.

Part	Function
<p>This mailbox is not a gateway</p> <p>This mailbox is a gateway</p>	<p>Specifies whether the mailbox is or is not a gateway.</p> <p>Options are:</p> <ul style="list-style-type: none"> ▶ This mailbox is not a gateway ▶ This mailbox is a gateway
Type	Specifies the type of gateway. Activated when the This mailbox is a gateway option is selected.
Configure	Accesses the HTTP Gateway Mailbox Properties dialog to enable you to configure properties for the HTTP gateway.
OK	Saves changes; exits dialog.
Cancel	Closes dialog without saving changes.
Help	Accesses online help.

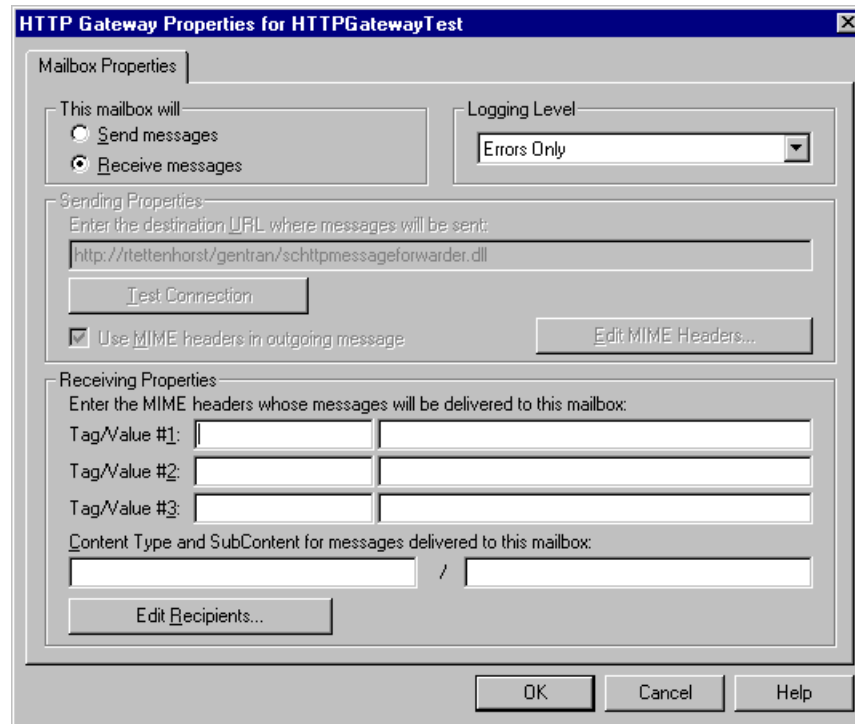
HTTP Gateway Mailbox Properties dialog box (Send properties) diagram

This diagram illustrates the HTTP Gateway Mailbox Properties dialog box with the Send option selected.



HTTP Gateway Mailbox Properties dialog box (Receive properties) diagram

This diagram illustrates the HTTP Gateway Mailbox Properties dialog box with the Receive option selected.



HTTP Gateway Mailbox Properties dialog box parts and functions

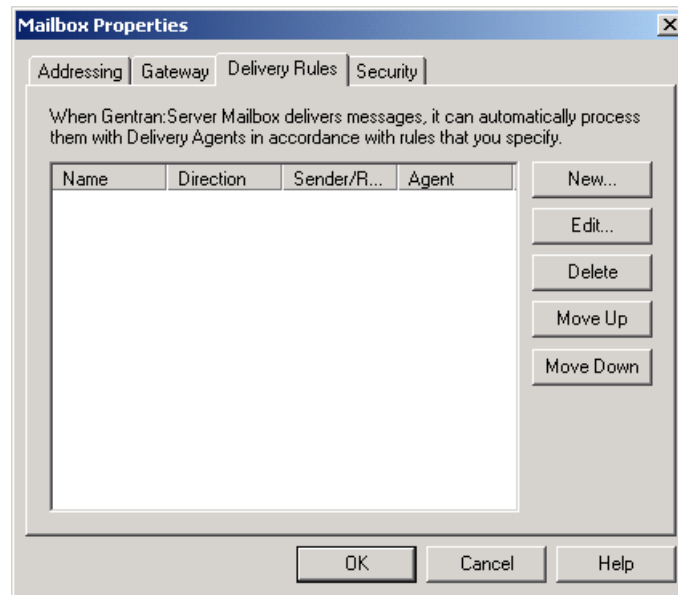
This table describes the parts of the HTTP Gateway Mailbox Properties dialog box and their functions.

Part	Function
This mailbox will	Indicates whether the mailbox sends or receives messages. Options are: <ul style="list-style-type: none"> Send messages Receive messages
Logging Level	Specifies the level of logging to use when receiving and forwarding messages. The valid values are: <ul style="list-style-type: none"> Errors Only Error and Warning Detailed
Enter the destination URL where messages will be sent	Contains the URL where the outgoing message will be sent. <p>Note This box is only activated when you select “Send messages.”</p>

(Contd) Part	Function
Test Connection	Verifies that the system is able to connect to the destination URL. Note This box is only activated when you select “Send messages.”
Use MIME headers in outgoing message	Indicates (if selected) that a set of MIME headers will be used to package and send the outgoing message. These MIME headers are prepended verbatim to the start of the outgoing message before it is posted. Note This box is only activated when you select “Send messages.”
Edit MIME Headers	Accesses the Edit MIME Headers dialog box, which enables you to type a set of MIME headers which will be used to package and send the outgoing message. These MIME headers are prepended verbatim to the start of the outgoing message before it is posted. Note This box is only activated when you select “Send messages.”
Enter the MIME headers whose messages will be delivered to this mailbox	Contains up to three MIME header tag/value pairs that the incoming message must match before the system will place the incoming message in this mailbox. Notes <ul style="list-style-type: none"> • All tag/value matching is case-insensitive. • These boxes are only activated when you select “Receive messages.”
Content Type and SubContent for messages delivered to this mailbox	Specifies the content type and subcontent type to use when delivering a message from this mailbox to the configured recipients. Note This box is only activated when you select “Receive messages.”
Edit Recipients	Accesses the Edit Recipients dialog box to enable you to select recipients for messages received into this mailbox.
OK	Saves changes; exits dialog box.
Cancel	Cancels unsaved changes; exits dialog box.
Help	Launches the online Help system.

Delivery Rules tab diagram

This diagram illustrates the Delivery Rules tab of the Mailbox Properties dialog box.



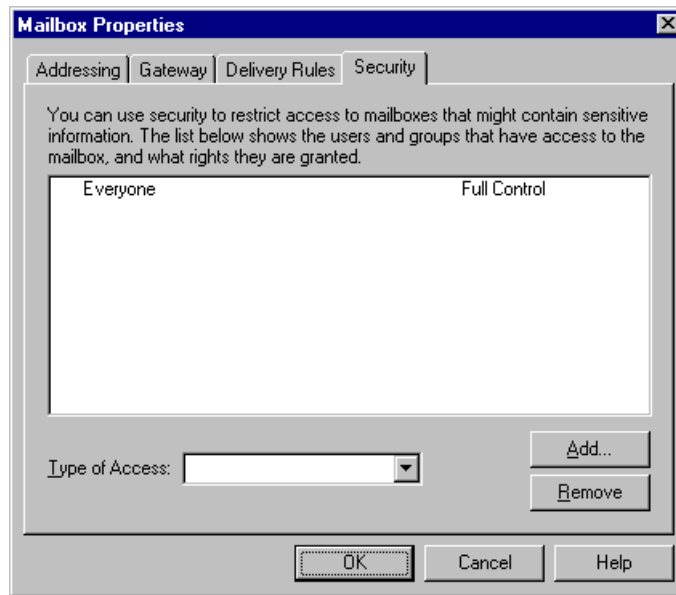
Delivery Rules tab parts and functions

This table describes the parts of the Delivery Rules tab of the Mailbox Properties dialog box and their functions.

Part	Function
Name	Defines the name of the Delivery Rule.
Direction	Identifies if the rule is run when sending or receiving a message.
Sender/Recipient	Identifies the mailbox of the sender or recipient. The mail address can be specified in addition to the mailbox name.
Agent	Identifies the name of the delivery agent to be run.
New	Enables you to create new Delivery Rules.
Edit	Enables you to edit existing Delivery Rules.
Delete	Enables you to delete Delivery Rules.
Move Up	Moves the selected Delivery Rule up in the processing order.
Move Down	Moves the selected Delivery Rule down in the processing order.
OK	Saves changes; exits dialog.
Cancel	Closes dialog without saving changes.
Help	Accesses online help.

Security tab diagram

This diagram illustrates the Security tab of the Mailbox Properties dialog box.



Security tab parts and functions

This table describes the parts of the Security tab of the Mailbox Properties dialog box and their functions.

Part	Function
(User list)	Defines users and groups that have access to mailbox.
Type of Access	Designates level at which a user can interact with a mailbox. Values are: <ul style="list-style-type: none"> ▶ Full control ▶ Read ▶ Write
Add	Enables you to grant users or groups mailbox access.
Remove	Enables you to remove user or group mailbox access.
OK	Saves changes; exits dialog.
Cancel	Closes dialog without saving changes.
Help	Accesses online help.

Procedures

Configuration process

HTTP Gateway process

This table lists the stages in configuring communications for use with HTTP Gateway.

Stage	Description
1	<p>Install the Sterling Gentran:Server HTTP Gateway.</p> <p>Reference Refer to the <i>IBM® Sterling Gentran:Server® for Microsoft Windows Options Pack Installation Card</i> for more information.</p>
2	<p>Create the HTTP Gateway Mailboxes that you intend to use.</p> <p>Reference See <i>How to Create HTTP Gateway Mailboxes</i> on page 2 - 20 for more information.</p> <p>Note When you upgrade your Sterling Gentran:Server for RosettaNet installation, the upgrade program creates an outbound HTTP Gateway mailbox for each outbound relationship in the current system. The name of the new mailbox incorporates the “to” and “from” partner information in the communications configuration table entry, and you are required to manually configure your partners and/or interchanges to use the new mailboxes.</p> <p>The upgrade creates the mailboxes needed for the inbound flow, however you are required to manually create and configure the IIS virtual directory necessary for inbound HTTP/HTTPS communications.</p>
3	<p>You need to manually set up one virtual directory for the HTTP Gateway. The actual directory for this virtual directory should be the your Sterling Gentran:Server Bin directory (usually c:\gensrvnt\bin). You must set the access permissions for this virtual directory to: Read, Run scripts, and Execute.</p> <p>For the HTTP Gateway to work properly with IIS 6.0, the scdeliveryquery.dll file must be allowed in the ISAPI Web Service Extensions.</p> <p>Reference Refer to your Microsoft IIS documentation for more information on creating this virtual directory.</p>

(Contd) Stage	Description
4	<p>If you are running the HTTP Gateway in a Single Workstation environment in which SQL Server is your database, you must add the following user to your GentranDatabase: IWAM_pcName. You must also manually grant this user SELECT access to the DeliveryQuery_tb database table. You do not need to grant any other access to this ID.</p> <p>Example If the machine name is “GENSYS,” the IWAM_pcName user is “IWAM_GENSYS” (no quotes).</p> <p>Reference See your SQL Server documentation for more information on how to perform these tasks.</p>
5	<p>If you are running the HTTP Gateway in a Distributed System environment in which SQL Server is your database, you must edit the security properties for the virtual directory to give “anonymous access” to the Domain ID that has access to the machine on which your SQL Server GentranDatabase resides.</p> <p>Reference See your Microsoft documentation for more information on how to perform these tasks.</p>
6	<p>If you want to retain messages which do not contain recognizable MIME header information or which are missing MIME header information, create a default mailbox for that purpose.</p> <p>Note By default, any message which does not contain MIME header information or which contain unrecognized MIME header information will be discarded. If you want to keep these type of messages, you must also create an HTTP Gateway mailbox and set the three MIME header tag/value pairs to null strings. Then, the HTTP Gateway will attempt to find this mailbox and deliver to it any message with unrecognized or missing MIME header information.</p> <p>Reference See <i>Creating a default mailbox to receive messages with missing or unrecognizable MIME header information</i> on page 2 - 24 for more information.</p>

How to Create HTTP Gateway Mailboxes

Introduction

You must create HTTP Gateway Mailboxes for incoming and outgoing messages, if you plan to receive and send messages through this gateway.

Creating a mailbox to send messages via HTTP

Use this procedure to create HTTP Gateway Mailboxes to send messages via HTTP.

Step	Action
1	Start the Mailbox Server Manager .
2	Select the Mailboxes folder icon.
3	Right-click, and select Create from the short-cut menu. System Response The system displays the Create Mailbox Wizard dialog box.
4	Type the name and description of the mailbox you are creating and click Next twice. System Response The system displays a dialog asking whether you want to use the mailbox as a gateway to another messaging system.
5	Select Yes, use this mailbox as a gateway .
6	Select HTTP Gateway from the list and click Next to advance the wizard. System Response The system displays the Create Mailbox Wizard - Summary dialog box.
7	Is the information that you entered correct? <ul style="list-style-type: none"> ▶ If <i>yes</i>, click Finish and continue with the next step. ▶ If <i>no</i>, click Back and correct the information. Then, continue with the next step. System Response The system displays the Mailbox Properties dialog box (Addressing tab). Note If you attempt to create a mailbox and the data store is missing, the system generates an error message box informing you that the mailbox cannot be created. Click OK to exit the message box and click Cancel to exit the Create Mailbox Wizard.
8	Select the Gateway tab. System response The system displays the gateway information.

(Contd) Step	Action
9	Click Configure . System response The system displays the HTTP Gateway Mailbox Properties dialog box.
10	Verify that the Send message option is selected in the “This mailbox will” section.
11	From the Logging Level list, select the logging level.
12	In the Enter the destination URL where messages will be sent box, type the URL where the outgoing message will be sent.
13	Click Test Connection . System response The system verifies that it is able to connect to the destination URL, and prompts you with a message stating its success (click OK) or failure (click OK and then repeat step 13 with another URL).
14	Do you want to use MIME headers in outgoing messages? <ul style="list-style-type: none"> ▶ If <i>yes</i>, select the Use MIME headers in outgoing messages check box and continue with the next step. ▶ If <i>no</i>, continue with Step 17.
15	Click Edit MIME Headers . System response The system displays the Edit MIME Headers dialog box.
16	Type a set of MIME headers which will be used to package and send the outgoing message and click OK . Note These MIME headers are prepended verbatim to the start of the outgoing message before it is posted.
17	Click OK to save changes and exit the HTTP Gateway Mailbox Properties dialog box.

Creating a mailbox to receive messages via HTTP

Use this procedure to create HTTP Gateway Mailboxes to receive messages via HTTP.

Step	Action
1	Start the Mailbox Server Manager .
2	Select the Mailboxes folder icon.
3	Right-click, and select Create from the short-cut menu. System Response The system displays the Create Mailbox Wizard dialog box.
4	Type the name and description of the mailbox you are creating and click Next twice. System Response The system displays a dialog asking whether you want to use the mailbox as a gateway to another messaging system.
5	Select Yes, use this mailbox as a gateway .
6	Select HTTP Gateway from the list and click Next to advance the wizard. System Response The system displays the Create Mailbox Wizard - Summary dialog box.
7	Is the information that you entered correct? <ul style="list-style-type: none"> ▶ If <i>yes</i>, click Finish and continue with the next step. ▶ If <i>no</i>, click Back and correct the information. Then, continue with the next step. System Response The system displays the Mailbox Properties dialog box (Addressing tab).
8	Select the Gateway tab. System response The system displays the gateway information.
9	Click Configure . System response The system displays the HTTP Gateway Mailbox Properties dialog box.
10	Verify that the Receive message option is selected in the “This mailbox will” section.
11	In the Enter the MIME headers whose message will be delivered to this mailbox section, type up to three MIME header tag/value pairs that the incoming message must match before the system will place the incoming message in this mailbox.
12	In the Content Type box, type the content type to use when delivering a message from this mailbox to its recipients.

(Contd) Step	Action
13	In the SubContent Type box, type the subcontent type to use when delivering a message from this mailbox to its recipients.
14	Click Edit Recipients . System Response The system displays the Edit Recipients dialog box.
15	Select a recipient from the list or enter the name in the box. Note You can also select a predefined distribution list. Reference See the <i>IBM® Sterling Gentran:Server® for Microsoft Windows Communications User Guide</i> for information on how to create a Distribution List. System Response The system displays the Email Address dialog box.
16	Do you want to specify an E-mail address? <ul style="list-style-type: none"> ▶ If <i>yes</i>, enter the E-mail address in the box. Click Add and then click OK. ▶ If <i>no</i>, click Cancel. System Response The system returns to the Edit Recipients dialog box.
17	Do you want to add more recipients? <ul style="list-style-type: none"> ▶ If <i>yes</i>, repeat Steps 14 through 17. ▶ If <i>no</i>, continue with the next step.
18	Click OK to return to the HTTP Gateway Mailbox Properties dialog box and continue with the next step.
19	Click OK to save changes and exit the HTTP Gateway Mailbox Properties dialog box.
20	Click OK to exit the Mailbox Properties dialog box.

Creating a default mailbox to receive messages with missing or unrecognizable MIME header information

Use this procedure if you want to create a default HTTP Gateway Mailbox to receive messages via HTTP which the system would otherwise discard because they are either missing MIME header information or contain unrecognizable MIME header information.

Step	Action
1	Start the Mailbox Server Manager .
2	Select the Mailboxes folder icon.
3	Right-click, and select Create from the short-cut menu. System Response The system displays the Create Mailbox Wizard dialog box.
4	Type the name and description of the mailbox you are creating and click Next twice. System Response The system displays a dialog asking whether you want to use the mailbox as a gateway to another messaging system.
5	Select Yes, use this mailbox as a gateway .
6	Select HTTP Gateway from the list and click Next to advance the wizard. System Response The system displays the Create Mailbox Wizard - Summary dialog box.
7	Is the information that you entered correct? <ul style="list-style-type: none"> ▶ If <i>yes</i>, click Finish and continue with the next step. ▶ If <i>no</i>, click Back and correct the information. Then, continue with the next step. System Response The system displays the Mailbox Properties dialog box (Addressing tab).
8	Select the Gateway tab. System response The system displays the gateway information.
9	Click Configure . System response The system displays the HTTP Gateway Mailbox Properties dialog box.
10	Verify that the Receive message option is selected in the “This mailbox will” section.

(Contd) Step	Action
11	<p>In the Enter the MIME headers whose message will be delivered to this mailbox section, type null strings in each of the three MIME header tag/value pairs.</p> <p>Note This ensures that the HTTP Gateway will attempt to find this mailbox and deliver to it any message with unrecognized or missing MIME header information.</p>
12	<p>In the Content Type box, type the content type to use when delivering a message from this mailbox to its recipients.</p>
13	<p>In the SubContent Type box, type the subcontent type to use when delivering a message from this mailbox to its recipients.</p>
14	<p>Click Edit Recipients.</p> <p>System Response The system displays the Edit Recipients dialog box.</p>
15	<p>Select a recipient from the list or enter the name in the box.</p> <p>Note You can also select a predefined distribution list.</p> <p>Reference See the <i>IBM® Sterling Gentran:Server® for Microsoft Windows Communications User Guide</i> for more information.</p> <p>System Response The system displays the Email Address dialog box.</p>
16	<p>Do you want to specify an E-mail address?</p> <ul style="list-style-type: none"> ▶ If <i>yes</i>, enter the E-mail address in the box. Click Add and then click OK. ▶ If <i>no</i>, click Cancel. <p>System Response The system returns to the Edit Recipients dialog box.</p>
17	<p>Do you want to add more recipients?</p> <ul style="list-style-type: none"> ▶ If <i>yes</i>, repeat Steps 14 through 17. ▶ If <i>no</i>, continue with the next step.
18	<p>Click OK to return to the HTTP Gateway Mailbox Properties dialog box and continue with the next step.</p>

(Contd) Step	Action
19	Click OK to save changes and exit the HTTP Gateway Mailbox Properties dialog box. System response The system prompts you to confirm the creation of this default mailbox.
20	Click OK to exit the Mailbox Properties dialog box.

How to Modify Mailbox Properties

Introduction This section describes how to modify mailbox properties that were created using the Create Mailbox Wizard.

Procedure Use this procedure to modify mailbox properties.

Step	Action	
1	Start the Mailbox Server Manager .	
2	Expand the Mailboxes folder.	
3	Select the mailbox for which you want to add or modify properties.	
4	Right-click and select Properties from the shortcut menu. System Response The system displays the Mailbox Properties dialog box (Addressing tab).	
5	Use this table to determine your next step.	
	IF you want to change the mailbox...	THEN click this tab...
	<ul style="list-style-type: none"> ▶ name ▶ Gentran E-mail address 	Addressing
	<ul style="list-style-type: none"> ▶ Gateway properties ▶ Send or Receive configuration properties 	Gateway
	delivery rules	Delivery Rules
	user security permissions	Security
6	Make the appropriate modifications and then click OK to save changes and exit the dialog box.	

HTTP Gateway Database Table Layout

Contents

- ▶ Introduction A - 2
 - ▶ DeliveryQuery_tb A - 3
-

Introduction

In this appendix

This appendix contains a reference for the HTTP Gateway database table (DeliveryQuery_tb). This enables you to quickly and easily refer to information on the purpose of the table, when the records in the table are created, updated, and deleted, and the usage of each field in the table.

Sterling Gentran:Server enables you to access its relational database tables by using your database management system. This gives you the capability to query the database tables.

Warning

The relationships between the tables in Sterling Gentran:Server are extremely complex, and therefore we strongly recommend that you do not update these tables.

DeliveryQuery_tb

Introduction The DeliveryQuery_tb stores the mapping of MIME header information to Sterling Gentran:Server mailboxes.

Table The following table contains the field information for the DeliveryQuery_tb.

Field Name	Type	Size	Usage
MailboxName	string	125	This indicates the Sterling Gentran:Server Mailbox associated with the MIME header tag/value pairs specified below.
MimeTag1	string	255	This specifies the MIME header tag #1.
MimeValue1	string	255	This specifies the MIME header value #1.
MimeTag2	string	255	This specifies the MIME header tag #2.
MimeValue2	string	255	This specifies the MIME header value #2.
MimeTag3	string	255	This specifies the MIME header tag #3.
MimeValue3	string	255	This specifies the MIME header value #3.
Content	string	255	This indicates the content type for this mailbox mapping.
SubContent	string	255	This indicates the content subtype for this mailbox mapping.

HTTP Gateway Error Messages

Contents	▶ Introduction	B - 2
	HTTP Gateway Error Messages	B - 3
	▶ Delivery Query Messages	B - 3
	▶ HTTP Gateway Error Messages	B - 6
	▶ SCMailData Error Messages	B - 8

Introduction

In this appendix

This appendix explains HTTP Gateway error messages and how to determine the action you should take when you receive an error message.

Where error messages are located

The HTTP Gateway error messages and other informational messages are noted on the Audit Log,

References

- See “Using the Audit Notification System” in the *IBM® Sterling Gentran:Server® for Microsoft Windows Administration Guide* for more information about the Audit Log.
- See the “Error Messages” appendix in the *IBM® Sterling Gentran:Server® for Microsoft Windows Administration Guide* for more information about other Sterling Gentran:Server error messages.
- See the “Error Messages” appendix in the *IBM® Sterling Gentran:Server® for Microsoft Windows for RosettaNet User Guide* for more information on RosettaNet-specific error messages.

The informational messages are dependent on the context of the program, and are intended to be self-explanatory.

Error message numbers

The types of error messages that HTTP Gateway uses are the following:

- **DeliveryQuery** occur if the error occurs on delivery.
- **HTTP Gateway** occur if the error was noted by the HTTP Gateway.
- **SCMailData** occur if the error was noted by the SCMailData DLL.

Source and component numeric values

This table lists the numeric values for the HTTP Gateway message source and component values.

Source	Component
16 - Internet Gateways	<ul style="list-style-type: none"> • 1 - Delivery Query • 2 - HTTP Gateway • 4 - SCMailData

HTTP Gateway Error Messages

Delivery Query Messages

Introduction This topic provides you with the error messages that DeliveryQuery may write to the Sterling Gentran:Server Audit Log.

Reference

See “Using the Audit Notification System” in the *IBM® Sterling Gentran:Server® for Microsoft Windows Administration Guide* for more information on the audit log.

Messages The DeliveryQuery error messages are listed below by the message number and the error message text.

Msg ID	Message Text	Explanation/Your Action
16-1-4	Unable to read in incoming post data from [host sending the HTTP post request].	<p>Explanation Unable to read POST data from IIS, so the message is discarded.</p> <p>Your Action Stop and start IIS services.</p>
16-1-5	The incoming post request data from [host sending the HTTP post request].	<p>Explanation The HTTP post request is empty.</p> <p>Your Action None.</p>
16-1-8	Memory allocation error occurred. Error code = [error code number]. Delivery Query processing aborted.	<p>Explanation Fatal error.</p> <p>Your Action Stop and restart IIS services. You may also need to reboot the machine.</p> <p>Reference See your Windows documentation for more information on stopping and restarting services.</p>

(Contd) Msg ID	Message Text	Explanation/Your Action
16-1-13	Unable to open DELIVERYQUERY_TB record set	<p>Explanation A database error occurred while opening the table.</p> <p>Your Action Check the Gentran database and make sure this table exists. Also, check the permissions for the table.</p> <p>Reference See the documentation for your database management system for more information.</p>
16-1-14	Database exception occurred while opening or querying DELIVERYQUERY_TB record set. Error = [exception details].	<p>Explanation A database error occurred.</p> <p>Your Action Check the Gentran database and make sure this table exists. The parameter in the message will give further information.</p> <p>Reference See the documentation for your database management system for more information.</p>
16-1-15	Memory exception occurred while opening or querying DELIVERYQUERY_TB record set.	<p>Explanation Fatal error.</p> <p>Your Action At a minimum, the IIS services should be stopped and restarted. A restart of the Gentran services may also be required.</p> <p>Reference See your Windows documentation for more information on stopping and restarting services.</p>

(Contd) Msg ID	Message Text	Explanation/Your Action
16-1-16	There is no Gentran:Server mailbox configured to handle the incoming message. The incoming message will be discarded.	<p>Explanation There is no Sterling Gentran:Server HTTP Gateway mailbox configured to receive the incoming message.</p> <p>Your Action Configure an HTTP gateway.</p> <p>Reference See <i>How to Create HTTP Gateway Mailboxes</i> on page 2 - 20 for more information.</p>
16-1-22	An error occurred while sending the incoming message to Gentran:Server mailbox [mailbox name]. Error = [error text]. The message is not sent.	<p>Explanation Unable to deliver the incoming HTTP POST to the destination mailbox.</p> <p>Your Action Make sure the Sterling Gentran:Server Mailbox service is running. Also, make sure the destination mailbox exists.</p> <p>References</p> <ul style="list-style-type: none"> • See the <i>IBM® Sterling Gentran:Server® for Microsoft Windows Administration Guide</i> for more information on starting Sterling Gentran:Server services. • See <i>How to Modify Mailbox Properties</i> on page 2 - 27 for more information on verifying the destination mailbox.

HTTP Gateway Error Messages

Introduction This topic provides you with the error messages that the HTTP Gateway may write to the Sterling Gentran:Server Audit Log.

Reference

See “Using the Audit Notification System” in the *IBM® Sterling Gentran:Server® for Microsoft Windows Administration Guide* for more information on the audit log.

Messages The HTTP Gateway error messages are listed below by the message number and the error message text.

Msg ID	Message Text	Explanation/Your Action
16-2-2	The outgoing message in the mailbox message attachment is missing or has a length of 0. HTTP Gateway outbound processing aborted.	<p>Explanation There is no data to process.</p> <p>Your Action None.</p>
16-2-3	Memory allocation error occurred. HTTP Gateway outbound processing aborted.	<p>Explanation Fatal error.</p> <p>Your Action Stop and start the Sterling Gentran:Server services. May also require a reboot of the PC.</p> <p>Reference See your Microsoft Windows documentation for more information on stopping and restarting services.</p>
16-2-4	Unable to read in the entire mailbox message attachment. Bytes read = [number of bytes read], Bytes available = [number of bytes available]. HTTP Gateway outbound processing aborted.	<p>Explanation Fatal error.</p> <p>Your Action Restart of IIS services and then have your trading partner resend the message.</p> <p>Reference See your Microsoft Windows documentation for more information on stopping and restarting services.</p>

(Contd) Msg ID	Message Text	Explanation/Your Action
16-2-5	HTTP POST to [destination URL] of message #[mailbox message number] failed. HTTP status code = [HTTP status code].	<p>Explanation The attempt to send HTTP POST failed.</p> <p>Your Action Check destination URL to see if it is valid and online.</p> <p>Reference See <i>Test Connection</i> on page 2 - 15 for more information on checking the destination URL.</p>
16-2-9	Unable to send message #[mailbox message number] to the recipients configured for [HTTP gateway mailbox name]. Error = [Mailbox Server error code].	<p>Explanation Message delivery to recipient list failed.</p> <p>Your Action Check the mailbox configuration.</p> <p>Reference See <i>How to Modify Mailbox Properties</i> on page 2 - 27 for more information on checking the mailbox configuration.</p>

SCMailData Error Messages

Introduction This topic provides you with the error messages that the SCSMailData program may write to the Sterling Gentran:Server Audit Log.

Reference

See “Using the Audit Notification System” in the *IBM® Sterling Gentran:Server® for Microsoft Windows Administration Guide* for more information on the audit log.

Messages The SCSMailData program error messages are listed below by the message number and the error message text.

Msg ID	Message Text	Explanation/Your Action
16-4-1	Unable to add recipient #[recipient] to message #[mailbox message number]. Error = [error text]. The message will not be sent from [mailbox name] to its recipients.	<p>Explanation Message could not be sent to final recipient due to Mailbox Server Manager error.</p> <p>Your Action Check the mailbox configuration.</p> <p>Reference See <i>How to Modify Mailbox Properties</i> on page 2 - 27 for more information on checking the mailbox configuration.</p>
16-4-2	Unable to open message #[mailbox message number]. Error = [error text]. The message will not be sent from [source mailbox name] to its recipients.	<p>Explanation Message could not be sent to final recipient due to Mailbox Server Manager error.</p> <p>Your Action Restart your Sterling Gentran:Server services.</p> <p>Reference See the <i>IBM® Sterling Gentran:Server® for Microsoft Windows Administration Guide</i> for more information on starting Sterling Gentran:Server services.</p>

(Contd) Msg ID	Message Text	Explanation/Your Action
16-4-3	Unable to remove recipients from message #[mailbox message number]. Error = [error message text]. The message will not be sent from [source mailbox name] to its recipients.	<p>Explanation Message could not be sent to final recipient due to Mailbox Server Manager error.</p> <p>Your Action Restart your Sterling Gentran:Server services.</p> <p>Reference See the <i>IBM® Sterling Gentran:Server® for Microsoft Windows Administration Guide</i> for more information on starting Sterling Gentran:Server services.</p>
16-4-4	Unable to modify message #[mailbox message number]. Error = [error message text]. The message will not be sent from [source mailbox name] to its recipients.	<p>Explanation Message could not be sent to final recipient due to Mailbox Server Manager error.</p> <p>Your Action Restart your Sterling Gentran:Server services.</p> <p>Reference See the <i>IBM® Sterling Gentran:Server® for Microsoft Windows Administration Guide</i> for more information on starting Sterling Gentran:Server services.</p>
16-4-5	Unable to open mailbox [mailbox name]. Error = [error text].	<p>Explanation Mailbox could not be opened.</p> <p>Your Action Check the mailbox configuration.</p> <p>Reference See <i>How to Modify Mailbox Properties</i> on page 2 - 27 for more information on checking the mailbox configuration.</p>

(Contd) Msg ID	Message Text	Explanation/Your Action
16-4-8	Unable to open or create and open the intermediate mailbox [mailbox name].	<p>Explanation Mailbox could not be opened.</p> <p>Your Action Check the mailbox configuration.</p> <p>Reference See <i>How to Modify Mailbox Properties</i> on page 2 - 27 for more information on checking the mailbox configuration.</p>
16-4-10	Unable to open [mailbox name] mailbox.	<p>Explanation Mailbox could not be opened.</p> <p>Your Action Check the mailbox configuration.</p> <p>Reference See <i>How to Modify Mailbox Properties</i> on page 2 - 27 for more information on checking the mailbox configuration.</p>
16-4-12	Gentran:Server mailbox service logon failed. Mercury ID/password problem. User needs to check Mercury service configuration.	<p>Explanation Sterling Gentran:Server Mailbox service ID or password problem.</p> <p>Your Action Check the configuration of the ID and password on the Sterling Gentran:Server Mailbox service.</p> <p>Reference See your Microsoft Windows documentation for more information on reconfiguring services.</p>
16-4-13	Gentran:Server mailbox service is not running.	<p>Explanation The Sterling Gentran:Server Mailbox service is not running.</p> <p>Your Action Restart the Mailbox service.</p> <p>Reference See your Microsoft Windows documentation for more information.</p>

(Contd) Msg ID	Message Text	Explanation/Your Action
16-4-14	Unable to open intermediate mailbox and destination mailbox [mailbox name]. Error = [error code].	<p>Explanation Mailbox could not be opened.</p> <p>Your Action Check the mailbox configuration.</p> <p>Reference See <i>How to Modify Mailbox Properties</i> on page 2 - 27 for more information on checking the mailbox configuration.</p>
16-4-17	MessCreate failed when creating new mailbox message for incoming data. Error = [error text].	<p>Explanation Unable to create new Mercury mailbox message.</p> <p>Your Action Restart the Sterling Gentran:Server services. You may need to call support.</p> <p>Reference See the <i>IBM® Sterling Gentran:Server® for Microsoft Windows Administration Guide</i> for more information on starting Sterling Gentran:Server services.</p>
16-4-18	AddRecipient failed when adding a recipient for the new mailbox message. Error = [error text].	<p>Explanation Unable to create new Mercury mailbox message.</p> <p>Your Action Restart the Sterling Gentran:Server services. You may need to call support.</p> <p>Reference See the <i>IBM® Sterling Gentran:Server® for Microsoft Windows Administration Guide</i> for more information on starting Sterling Gentran:Server services.</p>

(Contd) Msg ID	Message Text	Explanation/Your Action
16-4-19	MessSend failed to send the new mailbox message to [mailbox name]. Error = [error text]	<p>Explanation Unable to create new Mercury mailbox message.</p> <p>Your Action Restart the Sterling Gentran:Server services. You may need to call support.</p> <p>Reference See the <i>IBM® Sterling Gentran:Server® for Microsoft Windows Administration Guide</i> for more information on starting Sterling Gentran:Server services.</p>
16-4-20	[mailbox name] failed. Error = [error text]	<p>Explanation General error message for debugging purposes.</p> <p>Your Action None.</p>
16-4-22	CreateMailAttachment failed to attach the message data to the new mail message. Error = [error text].	<p>Explanation Unable to create new Mercury mailbox message attachment.</p> <p>Your Action Restart the Sterling Gentran:Server services. You may need to call support.</p> <p>Reference See the <i>IBM® Sterling Gentran:Server® for Microsoft Windows Administration Guide</i> for more information on starting Sterling Gentran:Server services.</p>

Notices

This information was developed for products and services offered in the U.S.A.

IBM may not offer the products, services, or features discussed in this document in other countries. Consult your local IBM representative for information on the products and services currently available in your area. Any reference to an IBM product, program, or service is not intended to state or imply that only that IBM product, program, or service may be used. Any functionally equivalent product, program, or service that does not infringe any IBM intellectual property right may be used instead. However, it is the user's responsibility to evaluate and verify the operation of any non-IBM product, program, or service.

IBM may have patents or pending patent applications covering subject matter described in this document. The furnishing of this document does not grant you any license to these patents. You can send license inquiries, in writing, to:

IBM Director of Licensing

IBM Corporation

North Castle Drive

Armonk, NY 10504-1785

U.S.A.

For license inquiries regarding double-byte character set (DBCS) information, contact the IBM Intellectual

Property Department in your country or send inquiries, in writing, to:

Intellectual Property Licensing

Legal and Intellectual Property Law

IBM Japan Ltd.

1623-14, Shimotsuruma, Yamato-shi

Kanagawa 242-8502 Japan

The following paragraph does not apply to the United Kingdom or any other country where such provisions are inconsistent with local law: INTERNATIONAL BUSINESS

MACHINES CORPORATION PROVIDES THIS PUBLICATION "AS IS" WITHOUT WARRANTY OF ANY KIND, EITHER EXPRESS OR IMPLIED, INCLUDING, BUT NOT LIMITED TO, THE IMPLIED WARRANTIES OF NON-INFRINGEMENT, MERCHANTABILITY OR FITNESS FOR A PARTICULAR PURPOSE. Some states do not allow disclaimer of express or implied warranties in certain transactions, therefore, this statement may not apply to you.

This information could include technical inaccuracies or typographical errors. Changes are periodically made to the information herein; these changes will be incorporated in new editions of the publication. IBM may make improvements and/or changes in the product(s) and/or the program(s) described in this publication at any time without notice.

Any references in this information to non-IBM Web sites are provided for convenience only and do not in any manner serve as an endorsement of those Web sites. The materials at those Web sites are not part of the materials for this IBM product and use of those Web sites is at your own risk.

IBM may use or distribute any of the information you supply in any way it believes appropriate without incurring any obligation to you.

Licensees of this program who wish to have information about it for the purpose of enabling: (i) the exchange of information between independently created programs and other programs (including this one) and (ii) the mutual use of the information which has been exchanged, should contact:

IBM Corporation

J46A/G4

555 Bailey Avenue

San Jose, CA_95141-1003

U.S.A.

Such information may be available, subject to appropriate terms and conditions, including in some cases, payment of a fee.

The licensed program described in this document and all licensed material available for it are provided by IBM under terms of the IBM Customer Agreement, IBM International Program License Agreement or any equivalent agreement between us.

Any performance data contained herein was determined in a controlled environment. Therefore, the results obtained in other operating environments may vary significantly. Some measurements may have been made on development-level systems and there is no guarantee that these measurements will be the same on generally available systems. Furthermore, some measurements may have been estimated through extrapolation. Actual results may vary. Users of this document should verify the applicable data for their specific environment.

Information concerning non-IBM products was obtained from the suppliers of those products, their published announcements or other publicly available sources. IBM has not tested those products and cannot confirm the accuracy of performance, compatibility or any other claims related to non-IBM products. Questions on the capabilities of non-IBM products should be addressed to the suppliers of those products.

All statements regarding IBM's future direction or intent are subject to change or withdrawal without notice, and represent goals and objectives only.

This information is for planning purposes only. The information herein is subject to change before the products described become available. This information contains examples of data and reports used in daily business operations. To illustrate them as completely as possible, the examples include the names of individuals, companies, brands, and products. All of these names are fictitious and any similarity to the names and addresses used by an actual business enterprise is entirely coincidental.

COPYRIGHT LICENSE:

This information contains sample application programs in source language, which illustrate programming techniques on various operating platforms. You may copy, modify, and distribute these sample programs in any form without payment to IBM, for the purposes of developing, using, marketing or distributing application programs conforming to the application programming interface for the operating platform for which the sample programs are written. These examples have not been thoroughly tested under all conditions. IBM, therefore, cannot guarantee or imply reliability, serviceability, or function of these programs. The sample programs are provided "AS IS", without warranty of any kind. IBM shall not be liable for any damages arising out of your use of the sample programs.

Each copy or any portion of these sample programs or any derivative work, must include a copyright notice as follows:

© IBM 2011. Portions of this code are derived from IBM Corp. Sample Programs.

© Copyright IBM Corp. 2011.

If you are viewing this information softcopy, the photographs and color illustrations may not appear.

Trademarks

IBM, the IBM logo, and ibm.com are trademarks or registered trademarks of International Business Machines Corp., registered in many jurisdictions worldwide. Other product and service names might be trademarks of IBM or other companies. A current list of IBM trademarks is available on the Web at "[Copyright and trademark information](http://www.ibm.com/legal/copytrade.shtml)" at www.ibm.com/legal/copytrade.shtml.

Adobe, the Adobe logo, PostScript, and the PostScript logo are either registered trademarks or trademarks of Adobe Systems Incorporated in the United States, and/or other countries.

IT Infrastructure Library is a registered trademark of the Central Computer and Telecommunications Agency which is now part of the Office of Government Commerce.

Intel, Intel logo, Intel Inside, Intel Inside logo, Intel Centrino, Intel Centrino logo, Celeron, Intel Xeon, Intel SpeedStep, Itanium, and Pentium are trademarks or registered trademarks of Intel Corporation or its subsidiaries in the United States and other countries.

Linux is a registered trademark of Linus Torvalds in the United States, other countries, or both.

Microsoft, Windows, Windows NT, and the Windows logo are trademarks of Microsoft Corporation in the United States, other countries, or both.

ITIL is a registered trademark, and a registered community trademark of the Office of Government Commerce, and is registered in the U.S. Patent and Trademark Office.

UNIX is a registered trademark of The Open Group in the United States and other countries.

Java and all Java-based trademarks and logos are trademarks or registered trademarks of Oracle and/or its affiliates.

Cell Broadband Engine is a trademark of Sony Computer Entertainment, Inc. in the United States, other countries, or both and is used under license therefrom.

Linear Tape-Open, LTO, the LTO Logo, Ultrium and the Ultrium Logo are trademarks of HP, IBM Corp. and Quantum in the U.S. and other countries.

Connect Control Center®, Connect:Direct®, Connect:Enterprise, Gentran®, Gentran:Basic®, Gentran:Control®, Gentran:Director®, Gentran:Plus®, Gentran:Realtime®, Gentran:Server®, Gentran:Viewpoint®, Sterling Commerce™, Sterling Information Broker®, and Sterling Integrator® are trademarks or registered trademarks of Sterling Commerce, Inc., an IBM Company.

Other company, product, and service names may be trademarks or service marks of others.
