

IBM Sterling Gentrans:Server for Microsoft Windows

SAP Gateway Configuration Guide

Version 5.3



Copyright

This edition applies to the 5.3 Version of IBM® Sterling Gentran:Server® for Microsoft Windows and to all subsequent releases and modifications until otherwise indicated in new editions.

Before using this information and the product it supports, read the information in Notices on page N-1.

Licensed Materials - Property of IBM

IBM® Sterling Gentran:Server® for Microsoft Windows

© Copyright IBM Corp. 1996, 2011. All Rights Reserved.

US Government Users Restricted Rights - Use, duplication or disclosure restricted by GSA ADP Schedule Contract with IBM Corp.

Table of Contents

Preface	About This Guide	
	▶ Introduction	iv
	▶ Description of Contents	v
	▶ Getting Support	vi
Chapter 1	SAP Gateway Overview	
	▶ Overview	1-2
	▶ SAP Gateway	1-3
	▶ SAP Gateway Mailboxes	1-4
	▶ Gateway Message Statuses	1-5
Chapter 2	Configuring Communications	
	▶ Introduction	2-2
	Properties	2-3
	▶ SAP Gateway	2-3
	▶ SAP Server Monitor	2-5
	▶ SAP Gateway Mailbox Properties	2-6
	▶ Mailbox Properties	2-16
	Procedures	2-20
	▶ Configuration process	2-20
	▶ How to Configure Your SAP Gateway	2-21
	▶ How to Create SAP Gateway Mailboxes	2-23
	▶ How to Modify Gateway Mailbox Configuration Properties	2-28
	▶ How to Add or Modify Gateway Mailbox Properties	2-29
Notices		

About This Guide

Contents

- ▶ Introductioniv
 - ▶ Description of Contentsv
 - ▶ Getting Supportvi
-

Introduction

Overview

This manual contains the tasks you must follow to:

- configure the IBM® Sterling Gentran:Server® for Microsoft Windows SAP Gateway
- create SAP Gateway mailboxes

Intended audience

The intended audience for this manual is:

- Sterling Gentran:Server system administrators
- advanced SAP users

Prerequisite knowledge

The audience using this software should be familiar with:

- Your Microsoft Windows Operating System
 - Communications protocols
 - SAP functionality
-

Description of Contents

Introduction

This guide is organized into the tasks that you complete when configuring communications for the SAP Gateway.

Organization of chapters

The guide is organized into chapters. A brief description of each chapter's contents follows.

- About This Guide explains the content, organization, and conventions in this guide.
 - SAP Gateway Overview provides a high-level overview of the SAP Gateway.
 - Configuring Communications explains the process for configuring SAP Gateway communications. This chapter also provides the procedures you must follow to configure your SAP Gateway Mailboxes.
-

Getting Support

How to Get Help

IBM® Sterling Customer Center provides a wealth of online resources that are available around the clock to enrich your business experience with IBM® Sterling Gentran®. By using Sterling Customer Center, you gain access to many self-support tools, including a Knowledge-Base, Documentation, Education, and Case Management. Access this site at: Sterling Customer Center. (<http://customer.sterlingcommerce.com>)

Once logged in, select **Support Center** from the top navigation menu, and then locate Sterling Gentran product-specific support information from the left navigation menu.

Additionally, our Customer Support Reference Guide outlines our support hours, contact information, and key information that will enhance your support experience with us. For detailed information about Customer Support, please refer to the Customer Support Reference Guide accessible from the login page. (<http://customer.sterlingcommerce.com>)

SAP Gateway Overview

Contents

- ▶ Overview 1 - 2
 - ▶ SAP Gateway 1 - 3
 - ▶ SAP Gateway Mailboxes 1 - 4
 - ▶ Gateway Message Statuses 1 - 5
-

Overview

-
- In this chapter** This chapter provides you with a high-level overview of the Sterling Gentran:Server SAP Gateway.
-
- What is SAP R/3?** SAP is business application software that includes programs for accounting and controlling, production and materials management, quality management, plant maintenance, sales, distribution, human resources management and project management. These programs can run independently or can combine to function as a single system.
- SAP uses the intermediate document (IDoc) interface to communicate data.
-
- What is a Gateway?** Gateways are software components that control the transmission of messages between two parties. The gateway is responsible for using the correct protocols to transfer messages between the sender and receiver. In a paper mail system, the gateway is the letter carrier who moves letters from senders to receivers. The letter carrier ensures that each letter has an address and proper postage before delivering the letter. The letter carrier also transfers the letter using the correct protocol: priority mail, first class, or bulk mail.
- You are responsible for defining the properties of the gateways that you use for transferring messages.
-
- What is a Mailbox?** A mailbox stores messages until those messages are transferred to a recipient application. You are responsible for creating mailboxes. When you create mailboxes, you associate the mailbox with an gateway. The properties that you define for each mailbox determine how messages are transferred from or to your application via the gateway.
-

SAP Gateway

Introduction

The SAP Gateway defines the relationships between the Mailbox Server Manager and the SAP file exchange system.

Supported transfer modes

The SAP Adapter supports two data transfer connection methods:

- ▶ Remote Function Call (RFC) - a file-based method for transferring data between the SAP system and the SAP Adapter.
 - ▶ Application Link Enabling (ALE) - a memory-based method for transferring data between the SAP system and the SAP Adapter.
-

Configuring the Gateway

You must configure the SAP Gateway before you can begin transferring or receiving messages.

Reference

See Configuring Communications, chapter 2 of this guide, for more information about configuring the SAP Gateway.

SAP Gateway Mailboxes

Introduction

In addition to gateway properties, you must also configure properties for SAP mailboxes. When you configure a mailbox for use with the SAP Gateway, you define the:

- Transfer mode
- Recipients
- Content type for messages and attachments
- Data mapping properties

Reference

See Configuring Communications, chapter 2 of this guide, for more information about configuring the SAP mailboxes.

Gateway Message Statuses

Introduction

When a message is sent to the SAP Gateway, the message status is changed to “Sent.” When the SAP Gateway submits a process to the SAP server, the message status is changed to “Sent Third-Party.” When the SAP process completes, the message status is changed to “Delivered” (if the process was successful) or to “Delivery Failed” (if the process was unsuccessful.).

Related topic

See “Tracking Messages” in the *IBM® Sterling Gentran:Server® for Microsoft Windows Communications User Guide* for additional information.

Configuring Communications

Contents	▶ Introduction	2 - 2
	Properties	3
	▶ SAP Gateway	2 - 3
	▶ SAP Server Monitor	2 - 5
	▶ SAP Gateway Mailbox Properties	2 - 6
	▶ Mailbox Properties	2 - 16
	Procedures	22
	▶ Configuration process	2 - 20
	▶ How to Configure Your SAP Gateway	2 - 21
	▶ How to Create SAP Gateway Mailboxes	2 - 23
	▶ How to Modify Gateway Mailbox Configuration Properties	2 - 28
	▶ How to Add or Modify Gateway Mailbox Properties	2 - 29

Introduction

In this chapter This chapter describes the tasks that you must complete to configure your SAP Gateway and SAP Gateway Mailbox.

Key Terms This table describes key terms used in this chapter.

Term	Description
Gateway	Gateways are software components that control the transmission of messages between two parties. The gateway is responsible for using the correct protocols to transfer messages between the sender and receiver.
Mailbox	A folder or set of folders used to store messages.
SAP	A point-to-point file transfer system.

Properties

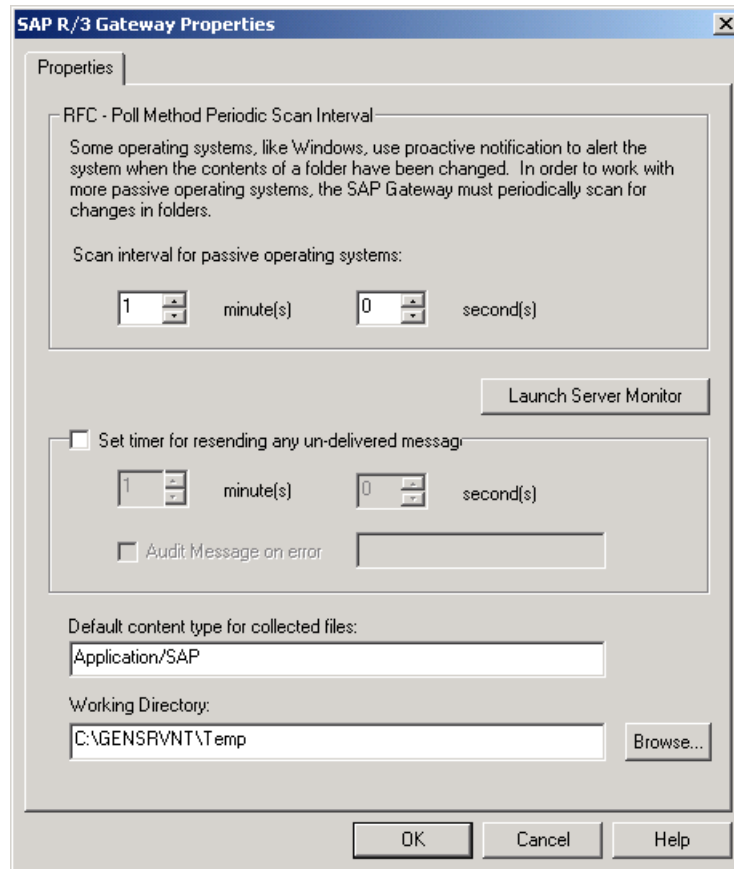
SAP Gateway

Introduction

The SAP Gateway Properties dialog box defines the properties of the SAP Gateway.

SAP Gateway Properties

This diagram illustrates the SAP Gateway Properties dialog box.



Parts and functions

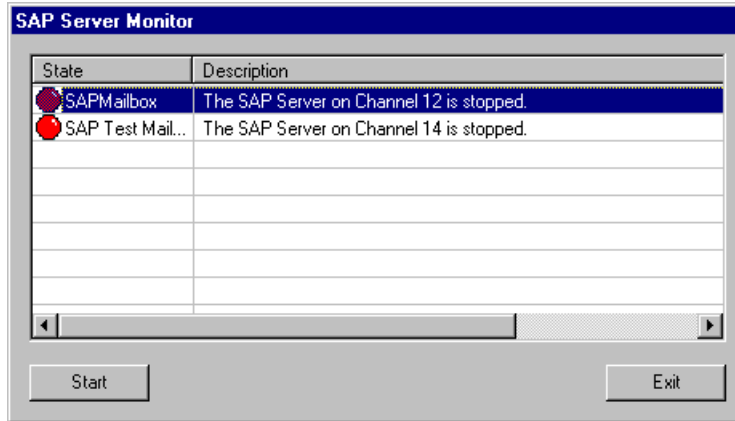
This table describes the parts of the SAP Gateway Properties dialog box and their functions.

Part	Function
Scan interval for passive operating systems minutes/seconds	Specifies the interval at which the contents of the SAP folders are scanned on systems that do not send automatic notifications of changes (passive operating systems). Intervals are defined in the minute(s) and second(s) boxes.
Launch Server Monitor	Accesses the SAP Server Monitor dialog box, which enables you to start the SAP Server.
Set timer for resending any undelivered messages minutes / seconds	Specifies the time interval at which you want the system to resend messages that were not delivered due to a connection loss. This interval can be expressed in: <ul style="list-style-type: none"> ▶ minute(s) ▶ second(s)
Audit Message on error	Specifies an error message number for which you want the system to generate an audit message when messages need to be resent.
Default content type for collected files	Defines the default content type for files collected.
Working Directory	Defines the temporary working directory used with this gateway. The default directory is C:\GENSRVNT\Bin\Temp or click Browse to select another Working Directory location.
Browse	Accesses the Choose Communication Queue dialog box, which allows you to select the appropriate working directory.
OK	Saves changes; exits dialog box.
Cancel	Cancel unsaved changes; exits dialog box.
Help	Launches the online Help system.

SAP Server Monitor

Introduction The SAP Server Monitor enables you to start and monitor the SAP Server.

SAP Server Monitor This diagram illustrates the SAP Server Monitor dialog box.



Parts and functions This table describes the parts of the SAP Server Monitor dialog box and their functions.

Part	Function
(list)	Displays the various SAP Mailbox Servers.
Start	Starts the selected mailbox server.
Exit	Closes the SAP Server Monitor.

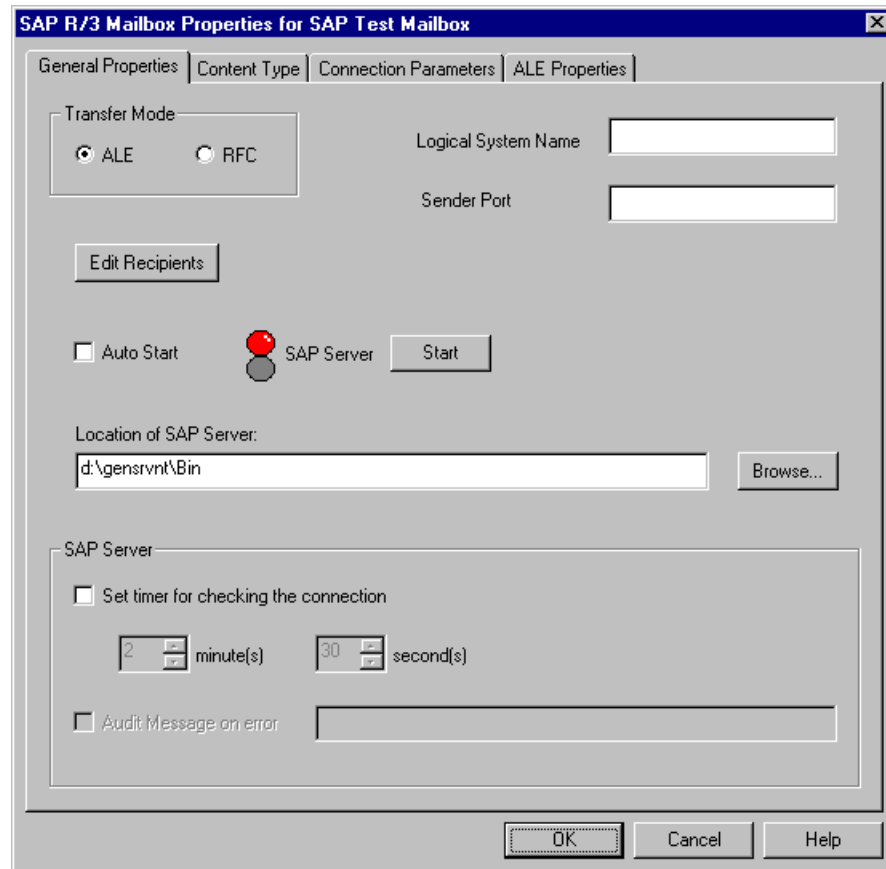
SAP Gateway Mailbox Properties

Introduction

The SAP Mailbox Properties dialog box defines the properties of SAP Gateway Mailboxes.

General Properties tab

This diagram illustrates the General Properties tab of the SAP Mailbox Properties dialog box.



Parts and functions

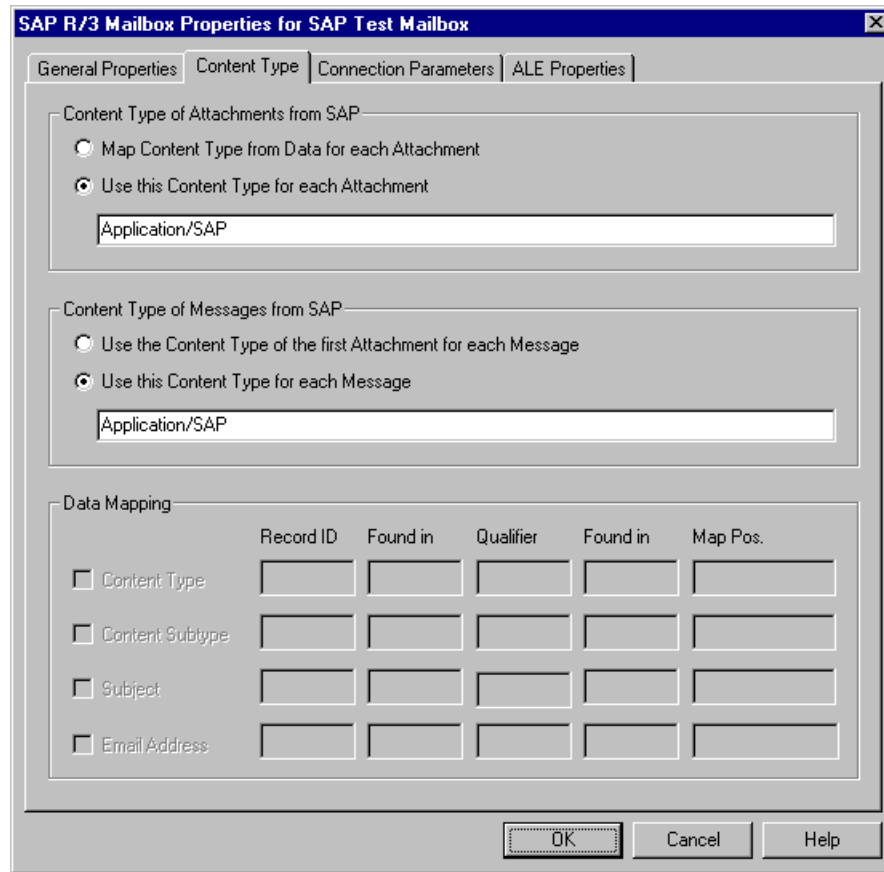
This table describes the parts of the General Properties tab of the SAP Mailbox Properties dialog box and their functions.

Part	Function
Transfer Mode	Defines the preferred method of data transference. Valid options are: <ul style="list-style-type: none"> • ALE - Application Link Enabling • RFC - Remote Function Call

(Contd) Part	Function
Logical System Name	Specifies the system name defined in SAP. Used with ALE.
Sender Port	Specifies the port name defined for the Logical System in the SAP system. Used with ALE.
Edit Recipients	Enables you to access the Edit Recipients dialog box and select message recipients for messages that you receive from SAP R/3.
SAP Server	Toggles between options on how you want to start the SAP server. Options are: <ul style="list-style-type: none"> ▶ Start - manually starts/stops the SAP Server program ▶ Auto Start - auto starts the SAP Server program
Location of SAP Server Browse	Specifies where the SAP server is located. You can manually enter the path and filename, or click Browse to navigate to the location.
Set timer for checking the connection	Enables you to specify the time interval at which you want the system to verify the connection between the SAP gateway and the SAP system. This interval can be expressed in: <ul style="list-style-type: none"> ▶ minute(s) ▶ second(s)
Audit message on error	Specifies an error message number for which you want the system to generate an audit message when messages need to be resent. This option is only available when the Set timer for checking the connection check box is selected.
OK	Saves changes; exits dialog box.
Cancel	Cancels unsaved changes; exits dialog box.
Help	Launches online Help system.

Content Type tab

This diagram illustrates the Content Type tab of the SAP Mailbox Properties dialog box.

**Parts and functions**

This table describes the parts of the Content Type tab of the SAP Mailbox Properties dialog box and their functions.

Part	Function
Content Type of Attachment from SAP	<p>Specifies how you want to manage content type information on attachments received from SAP. Valid options are:</p> <ul style="list-style-type: none"> Map Content Type from Data for each Attachment - activates Data Mapping section of dialog box. Use this Content Type for each attachment - enables you to specify a content type to apply to each attachment.
Content Type of Messages from SAP	<p>Specifies how you want to manage content type information on messages received from SAP. Valid options are:</p> <ul style="list-style-type: none"> Use the Content Type of the first Attachment for each message. Use this Content Type for each message - enables you to specify a content type that you want to apply to each message.

(Contd) Part	Function										
Data Mapping	<p>Used when the Map Content Type from Data for each Attachment option is selected. Selecting the appropriate check box enables you to map Content type, content subtype, Subject, or Email Address from data received.</p> <p>Note Record ID, Found in, and Map Pos are required fields.</p> <p>Example</p> <table border="0"> <thead> <tr> <th>Record ID</th> <th>Found In</th> <th>Qualifier</th> <th>Found In</th> <th>Map Pos</th> </tr> </thead> <tbody> <tr> <td>EDI_DC</td> <td>1-6</td> <td>ORDERS</td> <td>419-424</td> <td>419-424</td> </tr> </tbody> </table>	Record ID	Found In	Qualifier	Found In	Map Pos	EDI_DC	1-6	ORDERS	419-424	419-424
Record ID	Found In	Qualifier	Found In	Map Pos							
EDI_DC	1-6	ORDERS	419-424	419-424							
OK	Saves changes; exits dialog box.										
Cancel	Cancels unsaved changes; exits dialog box.										
Help	Launches online Help system.										

Connection Parameters tab

This diagram illustrates the Connection Parameters tab of the SAP Mailbox Properties dialog box.

Parts and functions

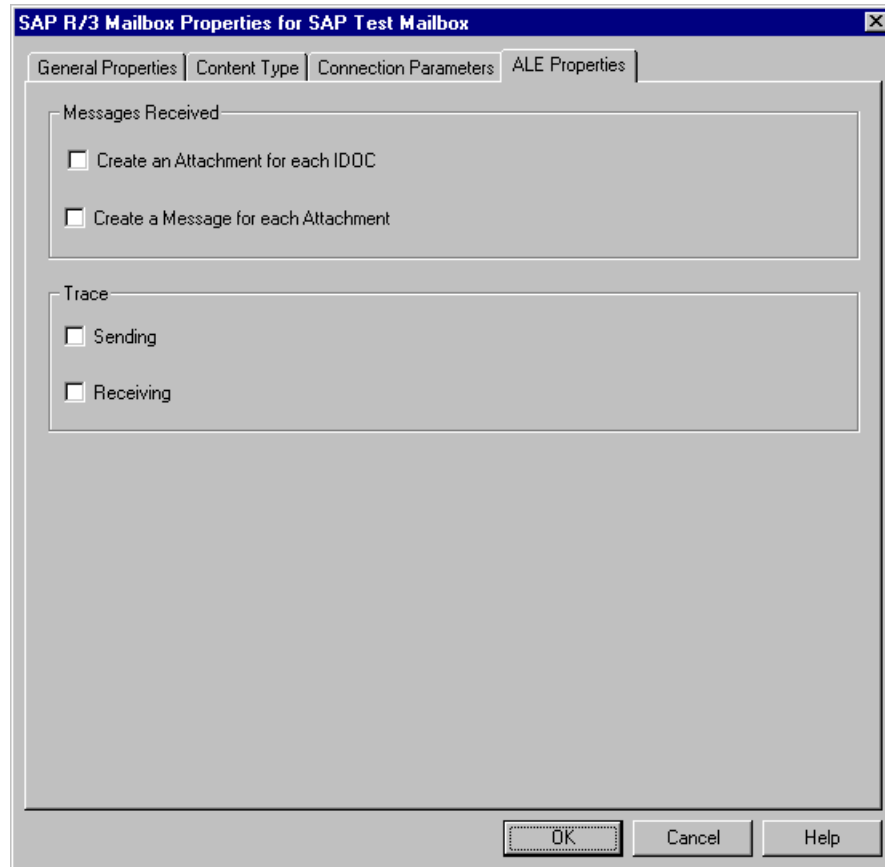
This table describes the parts of the Connection Parameters tab of the SAP Mailbox Properties dialog box and their functions.

Part	Function
Function Module	Name of the function module called to upload inbound IDoc data files (i.e., EDI_DATA_INCOMING).
Release	Identifies the release of the SAP system (ex. -3 represents the IDoc for SAP 3.x products.).
System ID	Identifies the second part of the Server Name field on SAP transaction SM51.
Username	Identifies the SAP system user ID (Upper case).
User Password	Identifies the user password (in uppercase type).

(Contd) Part	Function
System Client	Identifies the SAP system client as contained in the MANDT field of the IDoc.
System Language	Identifies the SAP users language. The default is E for English.
Application Server	Identifies the application server (the first part of the Server Name field on SAP transaction SM51).
System ID Number	Two-digit system identification number (the third part of the Server Name field on SAP transaction SM51)
Gateway Server	Identifies the gateway server from SAP transaction SE38. This value is case-sensitive.
Service	Identifies the SAP service from SAP transaction SE38.
Port	Identifies the SAP logical system port. This is typically SAP<SAP System Name> (from SAP transaction WE21).
OK	Saves changes; exits dialog box.
Cancel	Cancel unsaved changes; exits dialog box.
Help	Launches the online Help system.

ALE Properties tab

This diagram illustrates the ALE Properties tab of the SAP Mailbox Properties dialog box, which is only displayed if you selected the ALE transfer mode on the General tab.



Parts and functions

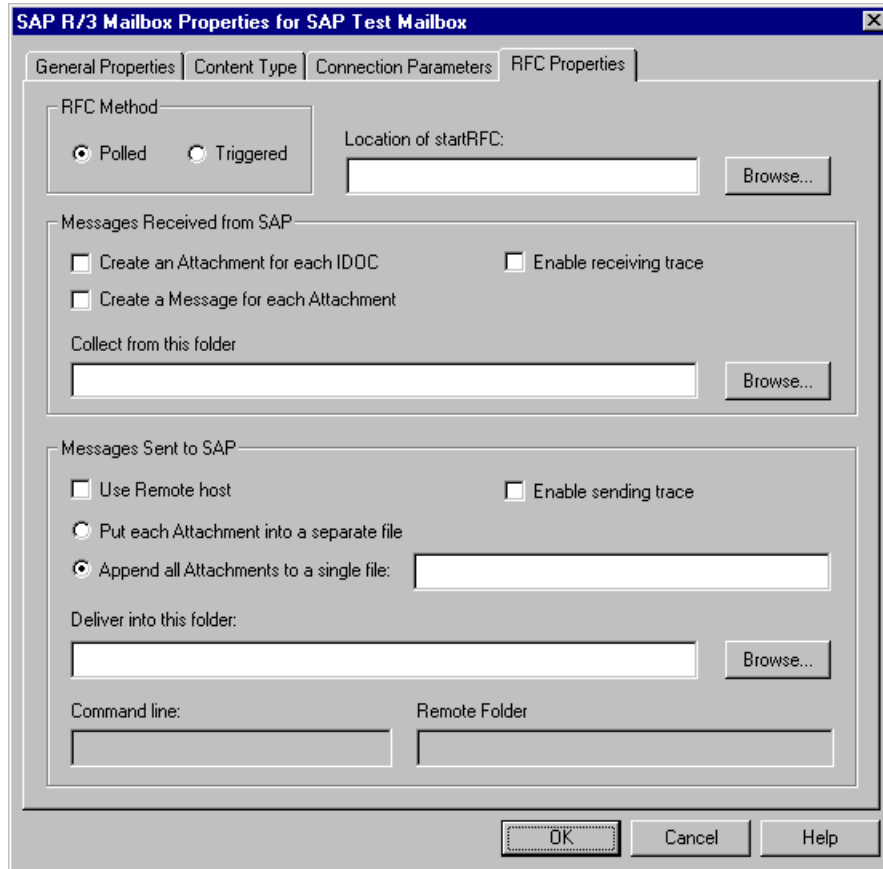
This table describes the parts of the ALE Properties tab of the SAP Mailbox Properties dialog box and their functions.

Part	Function
Messages Received	<ul style="list-style-type: none"> • Create an attachment for each IDoc - specifies that you want a separate attachment created for each IDoc received. This is recognized by the SAP IDoc Control record. • Create a message for each attachment - specifies that you want a separate message created for each attachment.
Trace	<ul style="list-style-type: none"> • Sending - traces processing errors that occur during a send operation in SAP. • Receiving - traces processing errors that occur during a receive operation in SAP.
OK	Saves changes; exits dialog box.

(Contd) Part	Function
Cancel	Cancels unsaved changes; exits dialog box.
Help	Launches online Help system.

**RFC Properties
tab**

This diagram illustrates the RFC Properties tab of the SAP Mailbox Properties dialog box, which is only displayed if you selected the RFC transfer mode on the General tab.



Parts and functions

This table describes the parts of the RFC Properties tab of the SAP Mailbox Properties dialog box and their functions.

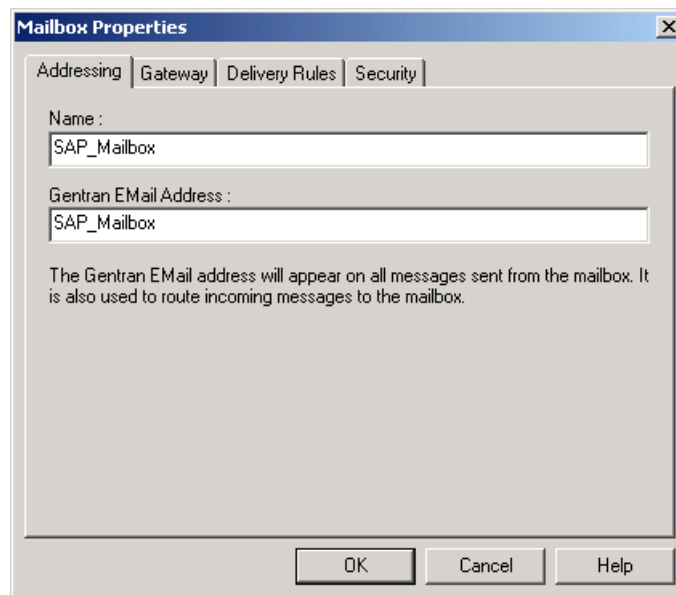
Part	Function
RFC method	<ul style="list-style-type: none"> ▶ Polled - SAP gateway polls its system to determine whether a message has been received. ▶ Triggered - SAP notifies the SAP gateway that it has sent a message.
Location of startRFC (for sending to SAP)	Identifies the path to the SAP startRFC.exe program. You can manually type the full path name or click Browse to navigate to the correct location.
Messages Received from SAP	<p>Specifies how you want to manage messages and attachments received from SAP. Options are:</p> <ul style="list-style-type: none"> ▶ Create an attachment for each IDoc - specifies that you want a separate attachment created for each IDoc received. This is recognized by the SAP IDoc Control record. ▶ Enable receiving trace - traces processing errors that occur during a receive operation in SAP. ▶ Create a message for each Attachment - specifies that you want a separate message created for each attachment. ▶ Collect from this folder - Specifies a specific folder from which you want to retrieve messages received from SAP. You can manually type the path to this folder or click Browse to navigate to the location.
Messages Sent to SAP	<ul style="list-style-type: none"> ▶ Use remote host - select if the SAP Host system is on a remote server. ▶ Enable sending trace - traces processing errors that occur during a send operation in SAP. ▶ Append all attachments to a single file. ▶ Put each attachment into a separate file (you must specify the file and path). ▶ Deliver into this folder - specifies a path and filename where you want attachments sent to SAP to be delivered (or click Browse). ▶ Command Line - activated when using a remote host. Enables a command to be executed like an FTP script from the local machine to the remote folder. ▶ Remote Folder - Activated when using a remote host. Specifies the name of the folder on the remote host. This is the folder used on the Startup command and it is also the folder that is passed to the Command Line as the first argument.

(Contd) Part	Function
OK	Produces a validation report and then saves changes and exits dialog box.
Cancel	Cancels unsaved changes; exits dialog box.
Help	Launches the online Help system.

Mailbox Properties

Introduction The Mailbox Properties dialog box defines the properties of the mailbox.

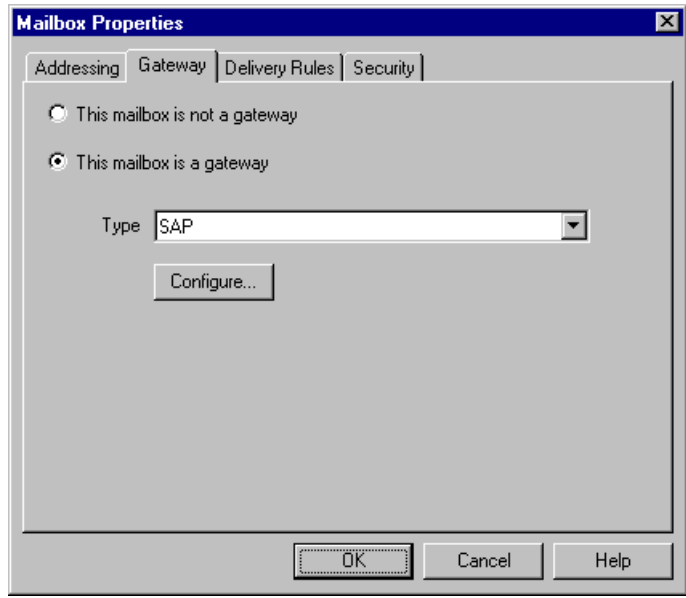
Addressing Tab This diagram illustrates the Addressing tab of the Mailbox Properties dialog box.



Parts and functions This table describes the parts of the Addressing tab of the Mailbox Properties dialog box and their functions.

Part	Function
Name	Defines the name of the mailbox.
Gentran Email address	Defines the Sterling Gentran:Server e-mail address for messages sent from the mailbox.
OK	Saves changes; exits dialog.
Cancel	Closes dialog without saving changes.
Help	Accesses online help.

Gateway Tab This diagram illustrates the Gateway tab of the Mailbox Properties dialog box.

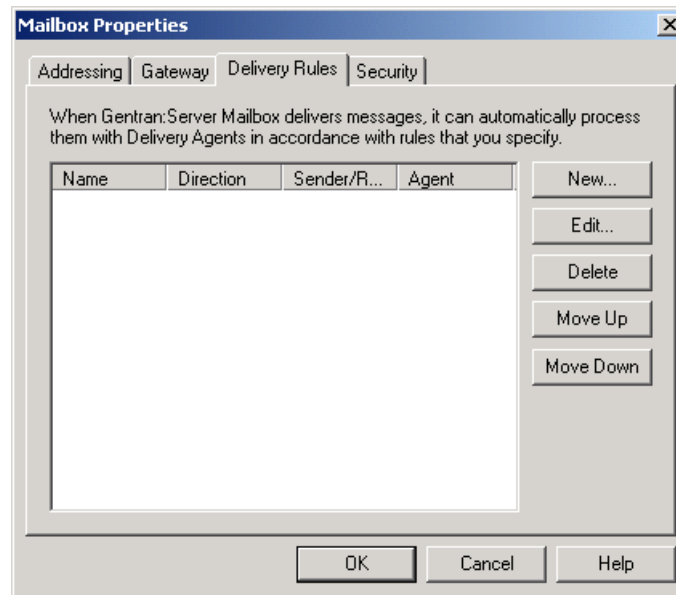


Parts and functions This table describes the parts of the Gateway tab of the Mailbox Properties dialog box and their functions.

Part	Function
This mailbox is not a gateway	Specifies whether the mailbox is or is not a gateway. Options are:
This mailbox is a gateway	
Type	Specifies the type of gateway. Activated when the This mailbox is a gateway option is selected.
Configure	Enables you to configure properties for the gateway.
OK	Saves changes; exits dialog.
Cancel	Closes dialog without saving changes.
Help	Accesses online help.

Delivery Rules Tab

This diagram illustrates the Delivery Rules tab of the Mailbox Properties dialog box.

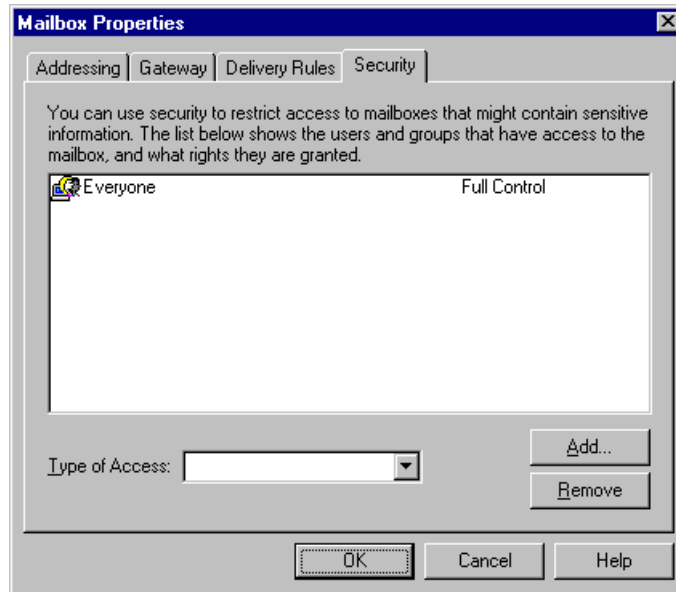
**Parts and functions**

This table describes the parts of the Delivery Rules tab of the Mailbox Properties dialog box and their functions.

Part	Function
Name	Defines the name of the Delivery Rule.
Direction	Identifies if the rule is run when sending or receiving a message.
Sender/Recipient	Identifies the mailbox of the sender or recipient. The E-mail address can be specified in addition to the mailbox name.
Agent	Identifies the name of the delivery agent to be run.
New	Enable you to create new Delivery Rules.
Edit	Enables you to edit existing Delivery Rules.
Delete	Enables you to delete Delivery Rules.
Move Up	Moves the selected Delivery Rule up in the processing order.
Move Down	Moves the selected Delivery Rule down in the processing order.
OK	Saves changes; exits dialog.
Cancel	Closes dialog without saving changes.
Help	Accesses online help.

Security Tab

This diagram illustrates the Security tab of the Mailbox Properties dialog box.



Parts and functions

This table describes the parts of the Security tab of the Mailbox Properties dialog box and their functions.

Part	Function
(User list)	Defines users and groups that have access to mailbox.
Type of Access	Designates level at which a user can interact with a mailbox. Values are: <ul style="list-style-type: none"> ▶ Full control ▶ Read ▶ Write
Add	Enables you to grant users or groups mailbox access.
Remove	Enables you to remove user or group mailbox access.
OK	Saves changes; exits dialog.
Cancel	Closes dialog without saving changes.
Help	Accesses online help.

Procedures

Configuration process

SAP gateway process

This table lists the stages in which you configure your SAP gateway.

Stage	Description
1	Configure the SAP gateway-level properties. Reference <i>See How to Configure Your SAP Gateway on page 2 - 21 for instructions.</i>
2	Create the gateway mailboxes that you intend to use. Reference <i>See How to Create SAP Gateway Mailboxes on page 2 - 23 for instructions.</i>

How to Configure Your SAP Gateway

Introduction

This gateway is used for sending and receiving messages through an SAP messaging system. This procedure configures gateway-level properties.

Note

To configure RFC properties or ALE properties at the mailbox level, create the mailbox, then select the RFC Properties tab or the ALE Properties tab of the SAP Mailbox Properties dialog box.

Before you begin

Before you begin configuring your SAP gateway you must:

- Install and configure your SAP messaging software.

Reference

See the documentation that came with your SAP messaging software for instructions.

- Install the SAP gateway.

Reference

See the *Option Pack Installation Card* for step-by-step installation instructions.

Procedure

Use this procedure to configure SAP gateway properties.

Step	Action
1	Start the Mailbox Server Manager. System Response The system displays the Mailbox Server Manager.
2	Expand the gateways folder icon to display installed gateways.
3	Select SAP from the gateways list.
4	Right-click and select Properties . System Response The system displays the SAP gateway Properties dialog box.
5	Set the RFC period scan interval.
6	Do you want to launch the SAP server for a particular SAP mailbox? <ul style="list-style-type: none"> • If yes, click Launch Server Monitor, select the appropriate mailbox, and click Start and then Exit. Continue with the next step. • If no, continue with the next step.

(Contd) Step	Action
7	<p>Do you want to specify a time interval for which you want the system to resend undelivered messages?</p> <ul style="list-style-type: none"> ▶ If yes, select the Set timer for resending undelivered messages check box. Enter the time interval in the minute(s) and second(s) boxes. Continue with the next step. ▶ If no, continue with Step 9.
8	<p>Do you want to specify an error message for which you want the system to generate an audit message?</p> <ul style="list-style-type: none"> ▶ If yes, select the Audit Message on error check box. Enter the error message number in the appropriate box. Continue with the next step. ▶ If no, continue with the next step.
9	Verify that the value in the Default content type for collected files box is accurate.
10	Verify that the path to the Working Directory is accurate.
11	<p>Click OK to complete the configuration of this gateway.</p> <p>You are now ready to create SAP gateway Mailboxes to use with this gateway.</p> <p>Reference See <i>How to Create SAP Gateway Mailboxes</i> on page 2 - 23 for instructions.</p>

How to Create SAP Gateway Mailboxes

Introduction

This section describes how to create SAP Gateway Mailboxes.

Connection parameters ALE

This table describes the connection parameters required for the ALE transfer mode.

Field	Required on Client?	Required on Server?
Function Module	Yes Note If this field is empty, the system uses a release dependent default.	No
Release	Yes	No
System ID	No	No
User	Yes	No
User Password	Yes	No
System Client	Yes	No
System Language	Yes	No
Application Server	Yes	No
System ID Number	Yes	No
Gateway Server	Yes	Yes
Service	No	Yes
Port	No	No

Connection parameters RFC

This table describes the connection parameters required for the RFC transfer mode.

Field	Required Inbound?	Required Outbound?
Function Module	No	Yes
Release	No	Yes
System ID	No	Yes
User	No	Yes
User Password	No	Yes
System Client	No	Yes

Field	Required Inbound?	Required Outbound?
System Language	No	Yes
Application Server	No	Yes
System ID Number	No	Yes
Gateway Server	No	Yes
Service	No	Yes
Port	No	Yes

Procedure Use this procedure to create SAP gateway Mailboxes.

Step	Action
1	Start the Mailbox Server Manager.
2	Select the Mailboxes folder icon.
3	Right-click and select New from the shortcut menu. System Response The system displays the Mailbox Creation Wizard dialog box.
4	Enter the name and description of the mailbox that you are creating and click Next to advance the wizard.
5	Enter the Mailbox Alias. Click Next to advance the wizard.
6	From the What type of Mailbox do you want to create list, select SAP . Click Next to advance the wizard.
7	Select the number of days that you want the message to stay in the system. Click Next to advance the wizard.
8	Do you need to restrict user access to this mailbox? <ul style="list-style-type: none"> ▶ If yes, highlight the user, then click the appropriate Edit or Remove button. Make the desired changes. Click OK to return to the Mailbox Wizard. Click Next to advance the wizard. ▶ If no, click Next to advance the wizard.

(Contd) Step	Action
9	<p>Do you want to configure mailbox-level properties?</p> <ul style="list-style-type: none"> ▶ If yes, click Next to display General Properties tab of the SAP Mailbox Properties dialog box. Continue with the next step. ▶ If no, click Finish to exit the Mailbox Creation Wizard and to return to the Mailbox Server Manager. <p>Note If you attempt to create a mailbox and the data store is missing, the system generates an error message box informing you that the mailbox cannot be created. Click OK to exit the message box and click Cancel to exit the Create Mailbox Wizard.</p> <p>Note You must configure gateway mailbox properties before you can use this gateway.</p> <p>Reference See <i>How to Add or Modify Gateway Mailbox Properties</i> on page 2 - 29 for instructions.</p>
10	<p>Enter the transfer mode. Valid options are:</p> <ul style="list-style-type: none"> ▶ RFC ▶ ALE
11	<p>Are you using ALE?</p> <ul style="list-style-type: none"> ▶ If yes, enter the Logical System Name and the Sender Port in the appropriate boxes. Continue with the next step. ▶ If no, continue with the next step.
12	<p>Are you receiving SAP data?</p> <ul style="list-style-type: none"> ▶ If yes, continue with the next step. ▶ If no, continue with Step 24.
13	<p>Click Edit Recipients.</p> <p>System Response The system displays the Edit Recipients dialog box.</p>
14	<p>Select a recipient from the list or enter the name in the box.</p> <p>Note You can also select a predefined distribution list.</p> <p>Reference See “Maintaining the Mailbox Server Manager” in the <i>IBM® Sterling Gentran:Server® for Microsoft Windows Communications User Guide</i> for information about how to create a Distribution List.</p>

(Contd) Step	Action	
15	Click the appropriate routing option. Valid options are: <ul style="list-style-type: none"> ▶ To ▶ CC ▶ BCC System Response The system displays the Email Address dialog box.	
16	Do you want to specify a Email Address? <ul style="list-style-type: none"> ▶ If yes, enter the Email Address in the box. Click Add. Click OK. ▶ If no, click Cancel. System Response You return to the Edit Recipients dialog box.	
17	Do you want to add more recipients? <ul style="list-style-type: none"> ▶ If yes, repeat Steps 14 to 17. Continue with the next step. ▶ If no, continue with the next step. 	
18	Click OK to exit the Edit Recipients dialog box.	
19	Select the process by which you want to start the SAP server. Valid options are: <ul style="list-style-type: none"> ▶ Start ▶ Auto start 	
20	Type the location of the SAP server or click Browse to navigate to the location.	
21	Do you want to specify a time interval for which the system will check the SAP server connection? <ul style="list-style-type: none"> ▶ If yes, click the Set timer for checking the connection check box. Enter a time interval in minutes and seconds. Continue with the next step. ▶ If no, continue with the next step. 	
22	Use this table to determine your next step.	
	IF the Set timer for checking the connection box is...	THEN...
	selected	Continue with the Step 23.
	not selected	Continue with Step 24.

(Contd) Step	Action	
23	Do you want to specify an error on which you want the system to generate an audit message? <ul style="list-style-type: none"> ▶ If yes, select the Audit message check box. In the On error box, type the error message number. ▶ If no, continue with the next step. 	
24	Select the Content Type tab.	
25	Select a Content Type of Attachments from SAP option.	
26	Select a Content Type of Messages from SAP option.	
27	In Step 25, did you select the Map Content Type from Data for each Attachment option? <ul style="list-style-type: none"> ▶ If yes, continue with the Data Mapping section of the dialog box. Select the check box in front of each data component that you want to map. Type the appropriate mapping information. Continue with the next step. <p>Note Record ID, Found In, and Map Pos. are required fields.</p> <ul style="list-style-type: none"> ▶ If no, continue with the next step. 	
28	Select the Connection Parameters tab.	
29	Enter the appropriate connection parameters.	
30	Use this table to determine your next step.	
	IF...	THEN....
	You are using ALE	<ul style="list-style-type: none"> ▶ Click the ALE Properties tab. Configure the appropriate options. ▶ Click OK to save all changes. <p>Note See <i>ALE Properties tab</i> on page 2 - 12 for field descriptions.</p>
You are using RFC	<ul style="list-style-type: none"> ▶ Click the RFC Properties tab. Configure the appropriate options. ▶ Click OK to save all changes. <p>Note See <i>RFC Properties tab</i> on page 2 - 13 for field descriptions.</p>	

How to Modify Gateway Mailbox Configuration Properties

Introduction This section describes how to modify gateway mailbox configuration properties that were created using the Mailbox Configuration Wizard.

Procedure Use this procedure to modify gateway mailbox properties.

Step	Action	
1	Start the Mailbox Server Manager.	
2	Expand the Mailboxes folder.	
3	Select the mailbox for which you want to add or modify properties.	
4	Right-click and select Properties from the shortcut menu. System Response The system displays the Mailbox Configuration dialog box.	
5	Use this table to determine your next step.	
	IF you want to change the mailbox...	THEN click this tab...
	<ul style="list-style-type: none"> ▶ name ▶ description ▶ mailbox alias ▶ message life span ▶ configuration properties 	General
	user security permissions	Security
	delivery rules	Delivery Rules
6	Make the appropriate modifications, and click OK to save changes and to exit the Mailbox Configuration dialog box.	

How to Add or Modify Gateway Mailbox Properties

Introduction This section describes how to add or how to modify gateway mailbox properties.

Procedure Use this procedure to add or modify gateway mailbox properties.

Step	Action	
1	Start the Mailbox Server Manager.	
2	Expand the Mailboxes folder.	
3	Select the mailbox for which you want to add or modify properties.	
4	Right-click and select Properties from the shortcut menu. System Response The system displays the Mailbox Configuration dialog box.	
5	Click Configure . System Response The system displays the properties for the selected mailbox.	
6	Use this table to determine your next step.	
	IF you...	THEN...
	did configure properties as part of the mailbox creation properties,	<ul style="list-style-type: none"> ▶ Make the necessary modifications. Click OK to save your changes and to exit the dialog box.
did not configure properties as part of the mailbox creation process,	<ul style="list-style-type: none"> ▶ Continue with Step 10 of <i>How to Create SAP Gateway Mailboxes</i> on page 2 - 23. 	

Notices

This information was developed for products and services offered in the U.S.A.

IBM may not offer the products, services, or features discussed in this document in other countries. Consult your local IBM representative for information on the products and services currently available in your area. Any reference to an IBM product, program, or service is not intended to state or imply that only that IBM product, program, or service may be used. Any functionally equivalent product, program, or service that does not infringe any IBM intellectual property right may be used instead. However, it is the user's responsibility to evaluate and verify the operation of any non-IBM product, program, or service.

IBM may have patents or pending patent applications covering subject matter described in this document. The furnishing of this document does not grant you any license to these patents. You can send license inquiries, in writing, to:

IBM Director of Licensing

IBM Corporation

North Castle Drive

Armonk, NY 10504-1785

U.S.A.

For license inquiries regarding double-byte character set (DBCS) information, contact the IBM Intellectual

Property Department in your country or send inquiries, in writing, to:

Intellectual Property Licensing

Legal and Intellectual Property Law

IBM Japan Ltd.

1623-14, Shimotsuruma, Yamato-shi

Kanagawa 242-8502 Japan

The following paragraph does not apply to the United Kingdom or any other country where such provisions are inconsistent with local law: INTERNATIONAL BUSINESS MACHINES CORPORATION PROVIDES THIS PUBLICATION "AS IS" WITHOUT WARRANTY OF ANY KIND, EITHER EXPRESS OR IMPLIED, INCLUDING, BUT NOT LIMITED TO, THE IMPLIED WARRANTIES OF NON-INFRINGEMENT, MERCHANTABILITY OR FITNESS FOR A PARTICULAR PURPOSE. Some states do not allow disclaimer of express or implied warranties in certain transactions, therefore, this statement may not apply to you.

This information could include technical inaccuracies or typographical errors. Changes are periodically made to the information herein; these changes will be incorporated in new editions of the publication. IBM may make improvements and/or changes in the product(s) and/or the program(s) described in this publication at any time without notice.

Any references in this information to non-IBM Web sites are provided for convenience only and do not in any manner serve as an endorsement of those Web sites. The materials at those Web sites are not part of the materials for this IBM product and use of those Web sites is at your own risk.

IBM may use or distribute any of the information you supply in any way it believes appropriate without incurring any obligation to you.

Licenseses of this program who wish to have information about it for the purpose of enabling: (i) the exchange of information between independently created programs and other programs (including this one) and (ii) the mutual use of the information which has been exchanged, should contact:

IBM Corporation

J46A/G4

555 Bailey Avenue

San Jose, CA__95141-1003

U.S.A.

Such information may be available, subject to appropriate terms and conditions, including in some cases, payment of a fee.

The licensed program described in this document and all licensed material available for it are provided by IBM under terms of the IBM Customer Agreement, IBM International Program License Agreement or any equivalent agreement between us.

Any performance data contained herein was determined in a controlled environment. Therefore, the results obtained in other operating environments may vary significantly. Some measurements may have been made on development-level systems and there is no guarantee that these measurements will be the same on generally available systems.

Furthermore, some measurements may have been estimated through extrapolation. Actual results may vary. Users of this document should verify the applicable data for their specific environment.

Information concerning non-IBM products was obtained from the suppliers of those products, their published announcements or other publicly available sources. IBM has not tested those products and cannot confirm the accuracy of performance, compatibility or any other claims related to non-IBM products. Questions on the capabilities of non-IBM products should be addressed to the suppliers of those products.

All statements regarding IBM's future direction or intent are subject to change or withdrawal without notice, and represent goals and objectives only.

This information is for planning purposes only. The information herein is subject to change before the products described become available. This information contains examples of data and reports used in daily business operations. To illustrate them as completely as possible, the examples include the names of individuals, companies, brands, and products. All of these names are fictitious and any similarity to the names and addresses used by an actual business enterprise is entirely coincidental.

COPYRIGHT LICENSE:

This information contains sample application programs in source language, which illustrate programming techniques on various operating platforms. You may copy, modify, and distribute these sample programs in any form without payment to IBM, for the purposes of developing, using, marketing or distributing application programs conforming to the application programming interface for the operating platform for which the sample programs are written. These examples have not been thoroughly tested under all conditions. IBM, therefore, cannot guarantee or imply reliability, serviceability, or function of these programs. The sample programs are provided "AS IS", without warranty of any kind. IBM shall not be liable for any damages arising out of your use of the sample programs.

Each copy or any portion of these sample programs or any derivative work, must include a copyright notice as follows:

© IBM 2011. Portions of this code are derived from IBM Corp. Sample Programs.
© Copyright IBM Corp. 2011.

If you are viewing this information softcopy, the photographs and color illustrations may not appear.

Trademarks

IBM, the IBM logo, and ibm.com are trademarks or registered trademarks of International Business Machines Corp., registered in many jurisdictions worldwide. Other product and service names might be trademarks of IBM or other companies. A current list of IBM trademarks is available on the Web at "[Copyright and trademark information](http://www.ibm.com/legal/copytrade.shtml)" at www.ibm.com/legal/copytrade.shtml.

Adobe, the Adobe logo, PostScript, and the PostScript logo are either registered trademarks or trademarks of Adobe Systems Incorporated in the United States, and/or other countries.

IT Infrastructure Library is a registered trademark of the Central Computer and Telecommunications Agency which is now part of the Office of Government Commerce.

Intel, Intel logo, Intel Inside, Intel Inside logo, Intel Centrino, Intel Centrino logo, Celeron, Intel Xeon, Intel SpeedStep, Itanium, and Pentium are trademarks or registered trademarks of Intel Corporation or its subsidiaries in the United States and other countries.

Linux is a registered trademark of Linus Torvalds in the United States, other countries, or both.

Microsoft, Windows, Windows NT, and the Windows logo are trademarks of Microsoft Corporation in the United States, other countries, or both.

ITIL is a registered trademark, and a registered community trademark of the Office of Government Commerce, and is registered in the U.S. Patent and Trademark Office.

UNIX is a registered trademark of The Open Group in the United States and other countries.

Java and all Java-based trademarks and logos are trademarks or registered trademarks of Oracle and/or its affiliates.

Cell Broadband Engine is a trademark of Sony Computer Entertainment, Inc. in the United States, other countries, or both and is used under license therefrom.

Linear Tape-Open, LTO, the LTO Logo, Ultrium and the Ultrium Logo are trademarks of HP, IBM Corp. and Quantum in the U.S. and other countries.

Connect Control Center®, Connect:Direct®, Connect:Enterprise, Gentran®, Gentran:Basic®, Gentran:Control®, Gentran:Director®, Gentran:Plus®, Gentran:Realtime®, Gentran:Server®, Gentran:Viewpoint®, Sterling Commerce™, Sterling Information Broker®, and Sterling Integrator® are trademarks or registered trademarks of Sterling Commerce, Inc., an IBM Company.

Other company, product, and service names may be trademarks or service marks of others.
