

IBM Sterling Gentran:Server for Windows



SMTTP Gateway Configuration Guide

Version 5.3.1

IBM Sterling Gentran:Server for Windows



SMTTP Gateway Configuration Guide

Version 5.3.1

Note

Before using this information and the product it supports, read the information in "Notices" on page 17.

This edition applies to the 5.3.1 version of IBM Sterling Gentrans:Server for Microsoft Windows and to all subsequent releases and modifications until otherwise indicated in new editions.

© **Copyright IBM Corporation 1996, 2012.**

US Government Users Restricted Rights – Use, duplication or disclosure restricted by GSA ADP Schedule Contract with IBM Corp.

Contents

Chapter 1. Internet E-mail Gateway

Overview 1

About the Internet E-mail Gateway 1

Gateway Message Flow. 1

Chapter 2. Configuring Communications 3

Internet E-mail Gateway Configuration Process. . . 3

E-Mail Gateway Properties Dialog Box. 3

Email Address Browser. 5

Creating a Mailbox to Send Messages using SMTP. . 5

Creating a Mailbox to Receive Messages using POP3 6

Mailbox Properties Dialog Box - Addressing Tab . . 8

Mailbox Properties Dialog Box - Gateway Tab . . . 8

Mailbox Properties Dialog Box - Delivery Rules Tab . 9

Mailbox Properties Dialog Box - Security Tab . . . 10

Modifying Mailbox Properties 11

Chapter 3. Internet E-mail Gateway

Error Messages 13

About E-mail Gateway Error Messages 13

Internet E-mail Gateway Error Messages 13

SCMailData Error Messages 14

Notices 17

Index 21

Chapter 1. Internet E-mail Gateway Overview

About the Internet E-mail Gateway

The Internet E-mail Gateway facilitates the transfer of inbound and outbound messages of any format with the Sterling Gentran:Server[®] Mailbox Server by acting as a Simple Mail Transfer Protocol (SMTP) and Post Office Protocol 3 (POP3) client.

The Internet E-mail Gateway supports the following protocols:

- SMTP for outgoing messages
- POP3 for incoming messages

Internet E-mail Gateway Mailboxes

You must configure properties for Internet E-mail mailboxes you create.

See the topics on "Configuring Communications" for more information on configuring the Internet E-mail mailboxes.

Gateway Message Flow

This topic describes both the inbound and outbound message flows.

For more information, see the Document Tracking chapter in the *IBM[®] Sterling Gentran:Server for Microsoft Windows User Guide*.

Inbound Message Flow

This table describes the inbound flow of messages through the Internet E-mail Gateway.

Stage	Process
1	The incoming e-mail message is sent to the e-mail address configured for the Sterling Gentran:Server Internet E-mail Gateway mailbox.
2	The POP3 server collects the e-mail message.
3	The Internet E-mail Gateway periodically polls the POP3 server to look for new messages. When new messages arrive, the Internet E-mail Gateway pulls them (and then deletes them) from the POP3 server. Note: If an error occurs while polling the POP3 server, the appropriate log message is written to the Sterling Gentran:Server Audit Log.
4	The Sterling Gentran:Server Mailbox service passes the new messages to the Outbox of the Sterling Gentran:Server Internet E-mail Gateway mailbox configured to receive messages.
5	The Internet E-mail Gateway mailbox delivers the messages to the Inbox of the configured recipient mailboxes.

Outbound Message Flow

This table describes the outbound flow of messages through the Internet E-mail Gateway.

Stage	Process
1	An outgoing message (in final format) is generated and placed in the Inbox of the Sterling Gentran:Server Internet E-mail Gateway mailbox configured to send messages.
2	The Internet E-mail Gateway packages the configured MIME header information around the outgoing message.
3	Then, using the gateway settings for this mailbox, the Internet E-mail Gateway sends the outgoing message to the SMTP server for delivery to the configured e-mail address.
4	The SMTP server receives the outgoing e-mail message and sends it to its final destination.
5	The SMTP server sends back status information regarding the recently sent message to indicate either success or failure.
6	<p>The Internet E-mail Gateway will update the status of the message in the Internet E-mail Gateway mailbox Inbox to "Read" if the message was successfully sent or leave the status of the message as "Unread" if the message was not successfully sent.</p> <p>In either case, the appropriate log message is written to the Sterling Gentran:Server Audit Log.</p>

Chapter 2. Configuring Communications

Internet E-mail Gateway Configuration Process

You must create Internet E-mail Gateway Mailboxes for incoming and outgoing messages, if you plan to receive and send messages through this gateway.

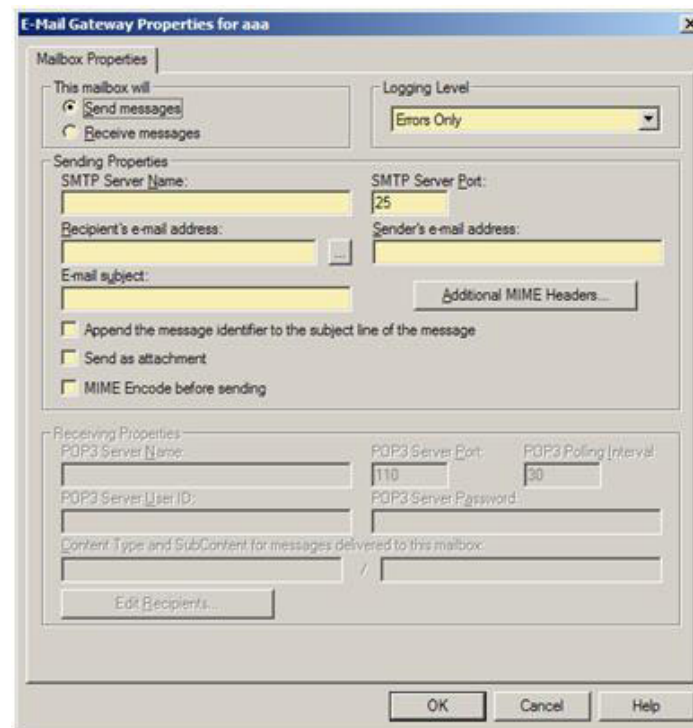
Note: There are no gateway-level properties to configure for the Internet E-mail Gateway.

This table lists the stages in configuring communications for use with the Internet E-Mail Gateway.

Stage	Description
1	Install the Sterling Gentran:Server Internet E-mail Gateway. Refer to the <i>Installation Guide</i> for more information.
2	Create the Internet E-mail Gateway Mailboxes that you intend to use.

E-Mail Gateway Properties Dialog Box

The following shows an example of the Addressing tab of the Mailbox Properties dialog box.

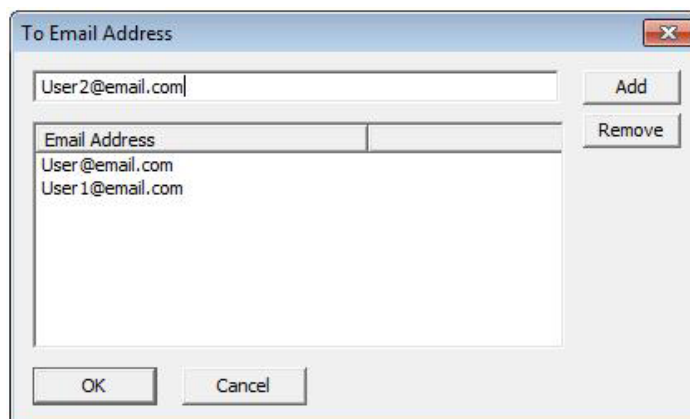


The following table describes the parts of the E-Mail Gateway Properties Dialog Box.

Part	Function
This mailbox will	Specify if this is a sending or receiving mailbox. Depending on your selection, either the Sending Properties or Receiving Properties of the dialog box become active.
Logging Level	Specify what events are logged.
Sending Properties	
SMTP Server Name	Specify the default SMTP server host name or IP address.
SMTP Server Port	Specify the port number of the SMTP server. The default is port 25.
Recipient's e-mail address	Specify the e-mail address where outgoing messages are sent. If you want to add multiple addresses, click the browse button to open the Email Address browser.
Sender's e-mail address	Specify the e-mail address to be used in the "From" field of the outgoing messages.
E-mail subject	Specify the Subject line for all e-mail messages sent from this mailbox.
Additional MIME Headers	Click this to open the Edit MIME headers dialog box. This allows you to specify additional MIME headers to be prepended to the existing MIME headers and used to package and send the outgoing message.
Append the message identifier to the subject line of the message	Select this to add the message ID to the end of the subject line of the email when the message is sent.
Send as attachment	Select this to add the message as an attachment to the email instead of sending the data in the body of the email.
MIME Encode before sending	Select this to add the email to an attachment and Base64 encode it.
Receiving Properties	
POP3 Server Name	Specify the default POP3 server.
POP3 Server Port	Specify the port number for the POP3 server. Default is 110.
POP3 Polling Interval	Specify the polling interval on the POP3 server (in seconds).
POP3 Server User ID	Specify the user identifier for the POP3 server.
POP3 Server Password	Specify the password for the POP3 server.
Content Type and SubContent for messages delivered to this mailbox	Specify the content type and subcontent type to use when delivering a message from this mailbox. Note: Enter the content type in the first box and the subcontent type in the second box.
Edit Recipients	Click this to open the Edit Recipients dialog box. This allows you to either select a recipient from the list or enter the name in the box.

Email Address Browser

The following shows the Email Address browser.



The following table describes the parts of the Email Address browser.

Table 1. Email Address browser parts and functions

Part	Function
To Email Address	Allows you to specify multiple email addresses as recipients from this mailbox. Enter an email address and click Add.
Email Address list	This list contains all of the email addresses who will receive messages from this mailbox. You can remove addresses from this list by selecting the address and clicking Remove.

Creating a Mailbox to Send Messages using SMTP

About this task

Use this procedure to create Internet E-Mail Gateway Mailboxes to send messages using SMTP.

Procedure

1. Start the **Mailbox Server Manager**.
2. Right-click on the **Mailboxes** folder icon and select **Create**.
The system displays the Create Mailbox Wizard dialog box.
3. Type the name and description of the mailbox you are creating and click **Next** twice.
The system displays a dialog asking whether you want to use the mailbox as a gateway to another messaging system.
4. Select **Yes, use this mailbox as a gateway**.
5. Select **E-mail Gateway** from the list and click **Next**.
6. Verify that the information that you entered is correct, and click **Finish**. If it is not correct, click **Back** and correct the information before continuing.
The system displays the Mailbox Properties dialog box.

Note: If you attempt to create a mailbox and the data store is missing, the system generates an error message box informing you that the mailbox cannot be created. Click **OK** to exit the message box and click **Cancel** to exit the Create Mailbox Wizard.

7. Select the **Gateway** tab.
8. Click **Configure**.

The system displays the E-mail Gateway Mailbox Properties dialog box.
9. Verify that the **Send messages** option is selected.
10. Select the logging level.
11. Enter values for the following:
 - Default SMTP server host name or IP address
 - Port number of the SMTP server (if it is not 25)
 - E-mail address where outgoing messages are sent

Note: Click the browse button to add multiple addresses on the Email Address browser.

 - E-mail address to be used in the "From" field of the outgoing messages
 - Subject line for all E-mail messages sent from this mailbox
12. To add the message ID to the end of the subject line of the email when the message is sent, select **Append the message identifier to the subject line of the message**.
13. To add the message as an attachment to the email instead of sending the data in the body of the email, select **Send as attachment**.
14. To add the email to an attachment and Base64 encode it, select **MIME Encode before sending**.
15. Click **Additional MIME Headers**.

The system displays the Edit MIME Headers dialog box.
16. Enter or select any additional MIME headers to be prepended to the existing MIME headers and used to package and send the outgoing message. Click **OK**.

Note: These MIME headers are prepended verbatim to the start of the outgoing message before it is sent.
17. Click **OK** to save changes and exit the E-mail Gateway Mailbox Properties dialog box.

Creating a Mailbox to Receive Messages using POP3

About this task

Use this procedure to create Internet E-mail Gateway Mailboxes to receive messages using POP3.

Procedure

1. Start the **Mailbox Server Manager**.
2. Right-click on the **Mailboxes** folder icon and select **Create**.

The system displays the Create Mailbox Wizard dialog box.
3. Type the name and description of the mailbox you are creating and click **Next** twice.

The system displays a dialog asking whether you want to use the mailbox as a gateway to another messaging system.

4. Select **Yes, use this mailbox as a gateway**.
5. Select **E-mail Gateway** from the list and click **Next**.
6. Verify that the information that you entered is correct, and click **Finish**. If it is not correct, click **Back** and correct the information before continuing.

The system displays the Mailbox Properties dialog box.

7. Select the **Gateway** tab.
8. Click **Configure**.

The system displays the E-mail Gateway Mailbox Properties dialog box.

9. Verify that the **Receive message** option is selected.
10. Enter values for the following:
 - POP3 server name
 - port number for the POP3 server (if it is not 110)
 - POP3 server polling interval (in seconds)
 - user identifier and password for the POP3 server
 - content type to use when delivering a message from this mailbox
 - subcontent type to use when delivering a message from this mailbox
11. Click **Edit Recipients**.

The system displays the Edit Recipients dialog box.
12. Select a recipient from the list or enter the name in the box.

Note: You can also select a predefined distribution list. See the *IBM Sterling Gentran:Server for Microsoft Windows Communications User Guide* for information on how to create a Distribution List.

The system displays the Email Address dialog box.

13. If you want, specify an E-mail address and click **Add**. Then click **OK**. Repeat Steps 17 and 18 for all of your recipients.

The system returns to the Edit Recipients dialog box.
14. Click **OK** to return to the E-mail Gateway Mailbox Properties dialog box.
15. Click **OK** to save changes.
16. Click **OK** to exit the Mailbox Properties dialog box.

Mailbox Properties Dialog Box - Addressing Tab

The following shows an example of the Addressing tab of the Mailbox Properties dialog box.

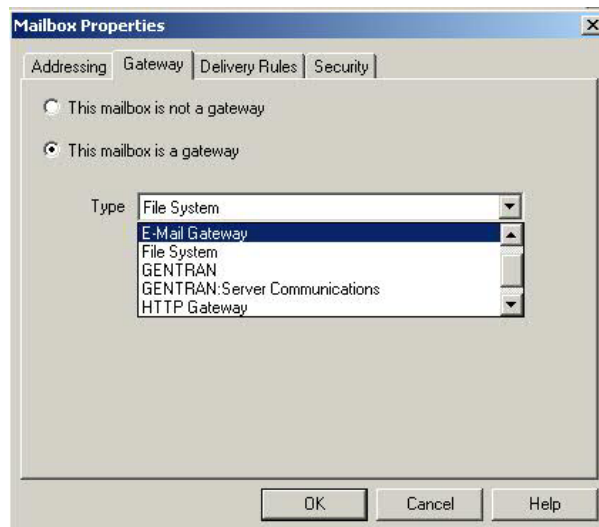


The following table describes the parts of the Addressing tab.

Part	Function
Name	Defines the name of the mailbox.
Gentran EMail Address	Defines the Sterling Gentran:Server email address for messages sent from the mailbox.

Mailbox Properties Dialog Box - Gateway Tab

The following shows an example of the Gateway tab of the Mailbox Properties dialog box.



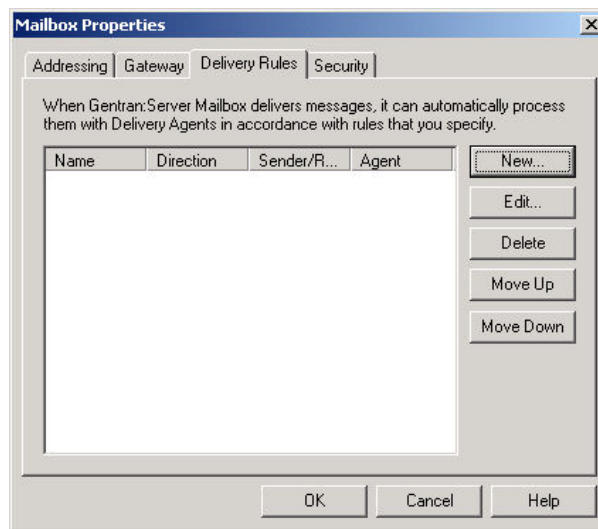
The following table describes the parts of the Gateway tab.

Part	Function
Gateway	Specifies whether the mailbox is or is not a gateway.

Part	Function
Type	Specifies the type of gateway. Active when "This mailbox is a gateway" is selected. Valid values are: <ul style="list-style-type: none"> • Connect:Direct • E-Mail • File System • Gentrans • Gentrans:Server Communications • HTTP • SAP
Configure	Enables you to configure properties for a selected gateway.

Mailbox Properties Dialog Box - Delivery Rules Tab

The following shows an example of the Delivery Rules tab of the Mailbox Properties dialog box.



The following table describes the parts of the Delivery Rules tab.

Part	Function
Name	Defines the name of the delivery rule.
Direction	Identifies whether the rule is run when sending or receiving a message.
Sender/Recipient	Identifies the mailbox of the sender or recipient. The mail address can be specified in addition to the mailbox name.
Agent	Identifies the name of the delivery agent to be run.
New	Creates new delivery rules.
Edit	Edits existing delivery rules.
Delete	Deletes the selected delivery rules.
Move Up	Moves the selected delivery rule up in the processing order.
Move Down	Moves the selected delivery rule down in the processing order.

The following shows an example of the New/Edit Delivery Rule dialog box.



Mailbox Properties Dialog Box - Security Tab

The Security tab of the Mailbox Properties dialog box defines the level of access users have for the mailbox.

The following shows an example of the Security tab of the Mailbox Properties dialog box.



The following table describes the parts of the Security tab.

Part	Function
User list	Defines users and groups that have access to mailbox.
Type of Access	Designates level at which a user can interact with a mailbox. Values are: <ul style="list-style-type: none"> • Full control • Read • Write
Add	Enables you to grant mailbox access to users or groups.
Remove	Enables you to remove mailbox access for a user or group.

Modifying Mailbox Properties

This topic describes how to modify mailbox properties that were created using the Create Mailbox Wizard.

About this task

Use this procedure to modify mailbox properties.

Procedure

1. Start the **Mailbox Server Manager**.
2. From the Mailboxes folder, select the mailbox for which you want to add or modify properties.
3. Right-click and select **Properties**.
4. Do one of the following:
 - If you want to change the mailbox name or Sterling Gentran:Server e-mail address, click the **Addressing** tab.
 - If you want to change the mailbox gateway properties or configuration properties, click the **Gateway** tab.
 - If you want to change the mailbox delivery rules, click the **Delivery Rules** tab.
 - If you want to change the mailbox user security permissions, click the **Security** tab.
5. Make the appropriate modifications and click **OK** to save changes and exit the dialog box.

Chapter 3. Internet E-mail Gateway Error Messages

About E-mail Gateway Error Messages

The Internet E-mail Gateway error messages and other informational messages are written to the Audit Log.

See the following for more information about audit logs and error messages:

- The *IBM Sterling Gentran:Server for Microsoft Windows Administration Guide*
- The *IBM Sterling Gentran:Server for Microsoft Windows for RosettaNet User Guide* (for information on RosettaNet-specific error messages)

The informational messages are dependent on the context of the program, and are intended to be self-explanatory.

The following are the types of error messages that Internet E-mail Gateway uses:

- Internet E-mail Gateway occur if the error was noted by the Internet E-mail Gateway.
- SCMailData occur if the error was noted by the SCMailData DLL.

This table lists the numeric values for the Internet E-mail Gateway message source and component values.

Source	Component
16 - Internet Gateways	<ul style="list-style-type: none">• 3 - Internet E-mail Gateway• 4 - SCMailData

Internet E-mail Gateway Error Messages

This topic describes the error messages that the Internet E-mail Gateway may write to the Sterling Gentran:Server Audit Log.

The Internet E-mail Gateway error messages are listed below.

Msg ID	Message Text	Explanation	Your Action
16-3-2	The outgoing message in the mailbox message attachment is missing or has a length of 0. Internet E-mail Gateway outbound processing aborted.	There is no data to process.	None.
16-3-3	Memory allocation error occurred. Internet E-mail Gateway outbound processing aborted.	Fatal error.	Stop and start the Sterling Gentran:Server services. May also require a reboot of the PC. See your Microsoft Windows documentation for more information.

Msg ID	Message Text	Explanation	Your Action
16-3-4	Unable to read in the entire mailbox message attachment. Bytes read = [number of bytes read], Bytes available = [number of bytes available]. Internet E-mail Gateway outbound processing aborted.	Fatal error.	Restart of IIS services and then have your trading partner resend the message. See your Microsoft Windows documentation for more information.
16-3-5	Unable to send message via e-mail to [destination E-mail address] using SMTP server [SMTP server name] at port [SMTP server port number]. Error = [SMTP error code].	The attempt to send the E-mail message failed.	Check the SMTP server settings for the E-mail gateway mailbox sending the message. Make sure that SMTP server is online.
16-3-12	An error occurred during POP3 E-mail collection for mailbox [E-mail gateway mailbox name]. Error = [error code].	Unable to collect new E-mail messages from the POP3 server.	Check the E-mail server settings for the gateway mailbox in the mailbox configuration. Verify that the E-mail server is online.
16-3-14	New POP3 E-mail message collected but not delivered to [E-mail gateway mailbox name]. Error = [error code].	Mailbox Server Manager delivery error.	Restart the Sterling Gentran:Server services. See your Microsoft Windows documentation for more information.

SCMailData Error Messages

This topic describes the error messages that the SCSMailData program writes to the Audit Log.

Note: See "Using the Audit Notification System" in the *IBM Sterling Gentran:Server for Microsoft Windows Administration Guide* for more information on the audit log.

The SCSMailData program error messages are listed below by the message number and the error message text.

Msg ID	Message Text	Explanation	Your Action
16-4-1	Unable to add recipient #[recipient] to message #[mailbox message number]. Error = [error text]. The message will not be sent from [mailbox name] to its recipients.	Message could not be sent to final recipient due to Mailbox Server Manager error.	Check the mailbox configuration. See "Modifying Mailbox Properties" on page 11 for more information.

Msg ID	Message Text	Explanation	Your Action
16-4-2	Unable to open message #[mailbox message number]. Error = [error text]. The message will not be sent from [source mailbox name] to its recipients.	Message could not be sent to final recipient due to Mailbox Server Manager error.	Restart your Sterling Gentran:Server services. See the <i>IBM Sterling Gentran:Server for Microsoft Windows Administration Guide</i> for more information.
16-4-3	Unable to remove recipients from message #[mailbox message number]. Error = [error message text]. The message will not be sent from [source mailbox name] to its recipients.	Message could not be sent to final recipient due to Mailbox Server Manager error.	Restart your Sterling Gentran:Server services. See the <i>IBM Sterling Gentran:Server for Microsoft Windows Administration Guide</i> for more information.
16-4-4	Unable to modify message #[mailbox message number]. Error = [error message text]. The message will not be sent from [source mailbox name] to its recipients.	Message could not be sent to final recipient due to Mailbox Server Manager error.	Restart your Sterling Gentran:Server services. See the <i>IBM Sterling Gentran:Server for Microsoft Windows Administration Guide</i> for more information.
16-4-5	Unable to open mailbox [mailbox name]. Error = [error text].	Mailbox could not be opened.	Check the mailbox configuration. See "Modifying Mailbox Properties" on page 11 for more information.
16-4-8	Unable to open or create and open the intermediate mailbox [mailbox name].	Mailbox could not be opened.	Check the mailbox configuration. See "Modifying Mailbox Properties" on page 11 for more information.
16-4-10	Unable to open [mailbox name] mailbox.	Mailbox could not be opened.	Check the mailbox configuration. See "Modifying Mailbox Properties" on page 11 for more information.
16-4-12	Gentran:Server mailbox service logon failed. Mercury ID/password problem. User needs to check Mercury service configuration.	Sterling Gentran:Server Mailbox service ID or password problem.	Check the configuration of the ID and password on the Sterling Gentran:Server Mailbox service.
16-4-13	Gentran:Server mailbox service is not running.	The Sterling Gentran:Server Mailbox service is not running.	Restart the Mailbox service. See your Microsoft Windows documentation for more information.
16-4-14	Unable to open intermediate mailbox and destination mailbox [mailbox name]. Error = [error code].	Mailbox could not be opened.	Check the mailbox configuration. See "Modifying Mailbox Properties" on page 11 for more information.

Msg ID	Message Text	Explanation	Your Action
16-4-17	MessCreate failed when creating new mailbox message for incoming data. Error = [error text].	Unable to create new Mercury mailbox message.	Restart the Sterling Gentran:Server services. You may need to call support. See the <i>IBM Sterling Gentran:Server for Microsoft Windows Administration Guide</i> for more information.
16-4-18	AddRecipient failed when adding a recipient for the new mailbox message. Error = [error text].	Unable to create new Mercury mailbox message.	Restart the Sterling Gentran:Server services. You may need to call support. See the <i>IBM Sterling Gentran:Server for Microsoft Windows Administration Guide</i> for more information.
16-4-19	MessSend failed to send the new mailbox message to [mailbox name]. Error = [error text]	Unable to create new Mercury mailbox message.	Restart the Sterling Gentran:Server services. You may need to call support. See the <i>IBM Sterling Gentran:Server for Microsoft Windows Administration Guide</i> for more information.
16-4-20	[mailbox name] failed. Error = [error text]	General error message for debugging purposes.	None.
16-4-22	CreateMailAttachment failed to attach the message data to the new mail message. Error = [error text].	Unable to create new Mercury mailbox message attachment.	Restart the Sterling Gentran:Server services. You may need to call support. See the <i>IBM Sterling Gentran:Server for Microsoft Windows Administration Guide</i> for more information.

Notices

This information was developed for products and services offered in the U.S.A.

IBM may not offer the products, services, or features discussed in this document in other countries. Consult your local IBM representative for information on the products and services currently available in your area. Any reference to an IBM product, program, or service is not intended to state or imply that only that IBM product, program, or service may be used. Any functionally equivalent product, program, or service that does not infringe any IBM intellectual property right may be used instead. However, it is the user's responsibility to evaluate and verify the operation of any non-IBM product, program, or service.

IBM may have patents or pending patent applications covering subject matter described in this document. The furnishing of this document does not grant you any license to these patents. You can send license inquiries, in writing, to:

IBM Director of Licensing

IBM Corporation

North Castle Drive

Armonk, NY 10504-1785

U.S.A.

For license inquiries regarding double-byte character set (DBCS) information, contact the IBM Intellectual Property Department in your country or send inquiries, in writing, to:

Intellectual Property Licensing

Legal and Intellectual Property Law

IBM Japan Ltd.

19-21, Nihonbashi-Hakozakicho, Chuo-ku

Tokyo 103-8510, Japan

The following paragraph does not apply to the United Kingdom or any other country where such provisions are inconsistent with local law:

INTERNATIONAL BUSINESS MACHINES CORPORATION PROVIDES THIS PUBLICATION "AS IS" WITHOUT WARRANTY OF ANY KIND, EITHER EXPRESS OR IMPLIED, INCLUDING, BUT NOT LIMITED TO, THE IMPLIED WARRANTIES OF NON-INFRINGEMENT, MERCHANTABILITY OR FITNESS FOR A PARTICULAR PURPOSE. Some states do not allow disclaimer of express or implied warranties in certain transactions, therefore, this statement may not apply to you.

This information could include technical inaccuracies or typographical errors. Changes are periodically made to the information herein; these changes will be

incorporated in new editions of the publication. IBM may make improvements and/or changes in the product(s) and/or the program(s) described in this publication at any time without notice.

Any references in this information to non-IBM Web sites are provided for convenience only and do not in any manner serve as an endorsement of those Web sites. The materials at those Web sites are not part of the materials for this IBM product and use of those Web sites is at your own risk.

IBM may use or distribute any of the information you supply in any way it believes appropriate without incurring any obligation to you.

Licensees of this program who wish to have information about it for the purpose of enabling: (i) the exchange of information between independently created programs and other programs (including this one) and (ii) the mutual use of the information which has been exchanged, should contact:

IBM Corporation

J46A/G4

555 Bailey Avenue

San Jose, CA 95141-1003

U.S.A.

Such information may be available, subject to appropriate terms and conditions, including in some cases, payment of a fee.

The licensed program described in this document and all licensed material available for it are provided by IBM under terms of the IBM Customer Agreement, IBM International Program License Agreement or any equivalent agreement between us.

Any performance data contained herein was determined in a controlled environment. Therefore, the results obtained in other operating environments may vary significantly. Some measurements may have been made on development-level systems and there is no guarantee that these measurements will be the same on generally available systems. Furthermore, some measurements may have been estimated through extrapolation. Actual results may vary. Users of this document should verify the applicable data for their specific environment.

Information concerning non-IBM products was obtained from the suppliers of those products, their published announcements or other publicly available sources. IBM has not tested those products and cannot confirm the accuracy of performance, compatibility or any other claims related to non-IBM products. Questions on the capabilities of non-IBM products should be addressed to the suppliers of those products.

All statements regarding IBM's future direction or intent are subject to change or withdrawal without notice, and represent goals and objectives only.

All IBM prices shown are IBM's suggested retail prices, are current and are subject to change without notice. Dealer prices may vary.

This information is for planning purposes only. The information herein is subject to change before the products described become available.

This information contains examples of data and reports used in daily business operations. To illustrate them as completely as possible, the examples include the names of individuals, companies, brands, and products. All of these names are fictitious and any similarity to the names and addresses used by an actual business enterprise is entirely coincidental.

COPYRIGHT LICENSE:

This information contains sample application programs in source language, which illustrate programming techniques on various operating platforms. You may copy, modify, and distribute these sample programs in any form without payment to IBM, for the purposes of developing, using, marketing or distributing application programs conforming to the application programming interface for the operating platform for which the sample programs are written. These examples have not been thoroughly tested under all conditions. IBM, therefore, cannot guarantee or imply reliability, serviceability, or function of these programs. The sample programs are provided "AS IS", without warranty of any kind. IBM shall not be liable for any damages arising out of your use of the sample programs.

Each copy or any portion of these sample programs or any derivative work, must include a copyright notice as follows:

© IBM 2012. Portions of this code are derived from IBM Corp. Sample Programs. © Copyright IBM Corp. 2012.

If you are viewing this information softcopy, the photographs and color illustrations may not appear.

Trademarks

IBM, the IBM logo, and [ibm.com](http://www.ibm.com)[®] are trademarks or registered trademarks of International Business Machines Corp., registered in many jurisdictions worldwide. Other product and service names might be trademarks of IBM or other companies. A current list of IBM trademarks is available on the Web at "Copyright and trademark information" at <http://www.ibm.com/legal/copytrade.shtml>.

Adobe, the Adobe logo, PostScript, and the PostScript logo are either registered trademarks or trademarks of Adobe Systems Incorporated in the United States, and/or other countries.

IT Infrastructure Library is a registered trademark of the Central Computer and Telecommunications Agency which is now part of the Office of Government Commerce.

Intel, Intel logo, Intel Inside, Intel Inside logo, Intel Centrino, Intel Centrino logo, Celeron, Intel Xeon, Intel SpeedStep, Itanium, and Pentium are trademarks or registered trademarks of Intel Corporation or its subsidiaries in the United States and other countries.

Linux is a registered trademark of Linus Torvalds in the United States, other countries, or both.

Microsoft, Windows, Windows NT, and the Windows logo are trademarks of Microsoft Corporation in the United States, other countries, or both.

ITIL is a registered trademark, and a registered community trademark of the Office of Government Commerce, and is registered in the U.S. Patent and Trademark Office.

UNIX is a registered trademark of The Open Group in the United States and other countries.

Java™ and all Java-based trademarks and logos are trademarks or registered trademarks of Oracle and/or its affiliates.

Cell Broadband Engine is a trademark of Sony Computer Entertainment, Inc. in the United States, other countries, or both and is used under license therefrom.

Linear Tape-Open, LTO, the LTO Logo, Ultrium and the Ultrium Logo are trademarks of HP, IBM Corp. and Quantum in the U.S. and other countries.

Connect Control Center®, Connect:Direct®, Connect:Enterprise®, Gentran®, Gentran®:Basic®, Gentran:Control®, Gentran:Director®, Gentran:Plus®, Gentran:Realtime®, Gentran:Server®, Gentran:Viewpoint®, Sterling Commerce™, Sterling Information Broker®, and Sterling Integrator® are trademarks or registered trademarks of Sterling Commerce®, Inc., an IBM Company.

Other company, product, and service names may be trademarks or service marks of others.

Index

C

- communications gateway 3, 8, 9, 10
- configuration overview 3
- creating mailboxes
 - incoming POP3 6
 - outgoing SMTP 5

D

- delivery agents 9
- delivery rules
 - properties 9

E

- e-mail addresses
 - Gentran mailbox 8
- E-mail Gateway error messages 13
- E-Mail Gateway Properties dialog box 3
- email properties 3
- error messages
 - E-mail Gateway errors 13
 - overview 13
 - SCMailData errors 14

G

- gateway types 8

I

- inbound message flow 1

M

- mailbox access 10
- mailbox properties 11
 - delivery rules 9
- Mailbox Properties dialog box
 - Addressing tab 8
 - Delivery Rules tab 9
 - Gateway tab 8
 - Security tab 10
- mailboxes
 - delivery rules 9
 - modifying 11
- message flow 1

O

- outbound message flow 1

P

- POP3 mailboxes 6
- protocols supported 1

R

- receiving properties 3

S

- SCMailData error messages 14
- security access 10
- sending properties 3
- SMTP mailboxes 5
- supported protocols 1



Product Number: 5725-D09

Printed in USA