

IBM Sterling Gentran:Server for Windows



# VDA User Guide

*Version 5.3.1*



IBM Sterling Gentran:Server for Windows



# VDA User Guide

*Version 5.3.1*

**Note**

Before using this information and the product it supports, read the information in "Notices" on page 15.

This edition applies to the 5.3.1 version of IBM Sterling Gentrans:Server for Microsoft Windows and to all subsequent releases and modifications until otherwise indicated in new editions.

© **Copyright IBM Corporation 1996, 2012.**

US Government Users Restricted Rights – Use, duplication or disclosure restricted by GSA ADP Schedule Contract with IBM Corp.

---

# Contents

## Chapter 1. Working with VDA Standards 1

About the VDA Standards . . . . .	1
VDA Support in Sterling Gentran:Server . . . . .	1
Outbound VDA Envelope Dialog Box . . . . .	2

## Chapter 2. VDA Standards Tutorial . . . 5

About the Tutorial . . . . .	5
Installing the VDA Tutorial Data. . . . .	5
Registering the Tutorial Translation Objects . . . . .	5
Setting the Import Path. . . . .	6
Creating a Splitter Entry . . . . .	6
Creating a Trading Partner Mailbox. . . . .	7

Importing the Tutorial Partner Profile . . . . .	8
Creating an Outbound VDA Map . . . . .	8
Compiling and Registering Tutorial Maps . . . . .	9
Creating an Outbound Relationship . . . . .	10
Creating an Inbound VDA Map . . . . .	11
Creating an Inbound Relationship . . . . .	12
Processing a Sample Outbound Application File . . . . .	13
Processing a Sample Inbound Application File. . . . .	14

<b>Notices . . . . .</b>	<b>15</b>
--------------------------	-----------

<b>Index . . . . .</b>	<b>19</b>
------------------------	-----------



---

# Chapter 1. Working with VDA Standards

---

## About the VDA Standards

VDA is the German automotive standard. The VDA standards are not included in the IBM® Sterling Gentran® Standards Database for EDI.

Support for VDA requires special procedures in setting up trading partners and in configuring IBM Sterling Gentran:Server® for Microsoft Windows. This document describes these steps and provides a tutorial for processing a sample VDA message.

VDA has several features that distinguish it from most other standards supported by Sterling Gentran:Server:

- It does not use a common set of interchange envelopes for all messages.
- It does not use functional groups.
- It uses a positional, nondelimited format.
- It uses looping but not composite elements.
- It uses a new control number (for the current transmission) and an old control number (for the previous one). As a result, control numbers do not need to be sequential.
- In some messages, it processes date formats differently.
- It uses a separate message to identify the communications protocol. A message is defined by a four-digit number, which doesn't appear in the data.
- The first record has six fields: version, customer, supplier, old transmission number, new transmission number, and transmission date.
- Each record begins with a three-byte record ID and a two-byte version number.

IBM provides VDA support for Sterling Gentran:Server by providing file format definitions, or .ifd files, on a separate DVD. You install the file format definitions using the install program on the DVD. The install program places all .ifd files and build and break maps into the Gensrvnt\Maps\Vda folder and all .tpl files into the Gensrvnt\Transobj\Vda folder. The tutorial data files are stored in the Gensrvnt\Tutorial\Vda folder.

For more information on the VDA standard, go to:

<http://www.vda.de/index.html>

For more information on ordering VDA recommendations, go to the following and select the VDA-Empfehlungen option:

<http://www.vda.de/de/publikationen>

---

## VDA Support in Sterling Gentran:Server

Sterling Gentran:Server currently supports the following VDA message types:

- 4905
- 4906
- 4907

- 4908
- 4913
- 4915

To use VDA with Sterling Gentran:Server, you must make changes to following functions:

- translation objects (compiled maps)
- trading partner definitions, and the
- Sterling Gentran:Server configuration

IBM provides the following map files to support VDA messages. Similar files are used to support the other message types.

File Name	Description
BrkIvda.map	Interchange break map
BrkTvda.map	Transaction break map
BldIvda.map	Interchange build map
BldTvda.map	Transaction build map
*.ifd	VDA side of map

IBM provides an .ifd file (for example, 4908.ifd) for each supported VDA message type. As support is provided for additional messages, IBM will update the provided maps.

**Note:** The CDA version of a specified message is part of the name of the .IFD file. For example, the name of file 4905\_ED4\_0496.IFD indicates that this file contains the VDA structure of the VDA message 4905 of edition 4, that is dated from April 1996.

This table lists the headers and trailers for other supported VDA message types:

Message type	Header	Trailer
4905	511	519
4906	811	819
4907	911	919
4908	821	829
4913	711	719
4915	551	559

---

## Outbound VDA Envelope Dialog Box

Use the Outbound VDA Envelope dialog box to assign values to be used with specific headers in VDA messages.

Use the Outbound VDA Envelope dialog box when you want to provide information to be included in the outbound interchange envelope using the Trading Partner information, rather than through the application file.

This diagram illustrates the Outbound VDA Envelope.



This table describes the fields on the Outbound VDA Envelope dialog box, as well as the length of each field.

Field Name	Field Length	Description
Supplier Number	9	An identification number assigned to a supplier by a customer. All fields of a record structure that contain the field Supplier Number are subject to data privacy protection. Data entries are left justified.
Customer Number	9	An identification number assigned to a customer by a supplier. All fields of a record structure that contain the field Customer Number are subject to data privacy protection. Data entries are left justified.
Sender Number	9	An identification number that the data sender arranges with the data receiver.
Receiver Number	9	An identification number that the data receiver arranges with the data sender.
Data Sender	9	An identification number that the data sender arranges with the data receiver.
Data Source Number	9	An identification number that the data source arranges with the data receiver.
Sub Suppliers	9	An identification number that is assigned to a sub supplier by a customer.
Sales Tax ID Recipient	20	An identification number of the national tax office for the recipient. This field is mandatory for delivery of goods within the European Union. Data entries are left justified.
Sales Tax ID Sender	20	An identification number of the national tax office for the sender. This field is mandatory for delivery of goods within the European Union. Data entries are left justified.
Payment Indication Number	6	A link between data transmission payment notification and real payments received. This includes the Check number and remittal number. Data entries are left justified.

Field Name	Field Length	Description
Comp. Reg. Number	25	An identification of the National Register of Business Names (Commercial Register) for the supplier. This field is mandatory for some European countries.
Carrier Number	9	The carrier data number of VDA message 4920. If relevant, the contents of this field will be identical to the contents of the field in record type 712, position 13.
Warehouse Keeper Code	1	A code that identifies the person who created the interchange.
Purpose Code	2	Not used in this release.

This table shows the fields of the Outbound VDA Envelope and the VDA message headers that the field is used with. An X indicates that the field is used with that VDA message and is required on the Outbound VDA Envelope dialog box.

Field Name	Message/Release Date						
	4905/ 1088	4905/ 0496	4906/ 0593	4907/ 0893	4908/ 0596	4913/ 1094	4915/ 1189
Supplier Number	X	X	X	X	X		X
Customer Number	X	X	X	X	X		X
Sender Number							
Receiver Number							
Data Sender						X	
Data Source Number						X	
Sub Suppliers						X	
Sales Tax ID Recipient			X		X		
Sales Tax ID Sender			X		X		
Payment Indication Number				X			
Comp Reg. Number					X		
Carrier Number						X	
Warehouse Keeper Code						X	
Purpose code							

---

## Chapter 2. VDA Standards Tutorial

---

### About the Tutorial

This tutorial provides an example of how to set up Sterling Gentran:Server with VDA message 4908.

In this tutorial, you will do the following:

- Install the VDA tutorial files, maps, and file format definitions.
- Configure Sterling Gentran:Server for use with VDA standards.
- Set up a trading partner mailbox.
- Import a VDA trading partner.
- Compile and register maps.
- Process a sample message, both inbound and outbound.

---

### Installing the VDA Tutorial Data

#### Before you begin

Before you begin installing the VDA Tutorial data, ensure that you have installed the latest version of Sterling Gentran:Server.

#### About this task

Use this procedure to install the VDA tutorial data onto your Sterling Gentran:Server system.

#### Procedure

1. Insert the DVD containing the VDA tutorial data, maps, and file format definitions into the appropriate disk drive.
2. Navigate to the VDA folder on the DVD and double-click **Setup**.  
Windows launches the installation program.
3. Click **Next**.  
The Choose Destination Location dialog box is displayed.
4. Click **Next** to accept the default installation location.
5. Click **OK** to complete the installation procedure.
6. Before you begin the tutorial, create a folder called `Vda_out` in the `\Gensrvnt` folder on your hard drive.

---

### Registering the Tutorial Translation Objects

#### About this task

Use this procedure to register the translation objects provided with the tutorial data.

#### Procedure

1. Start Sterling Gentran:Server and select **View > Translation Objects**.  
The EDI Translation Objects dialog is displayed.

2. Click **New** to open the Register Translation Object dialog box.
3. Browse to the Gensrvnt\Transobj\Vda folder and select the following files:
  - BrkIvda.tpl
  - BrkTvda.tpl
  - BldIvda.tpl
  - BldTvda.tpl
4. Click **Open**.

The translation objects are now registered and can be used.
5. Click **New** to open the Register Translation Object dialog box.
6. Browse to the Gensrvnt\Tutorial\Vda folder and select the following files:
  - VDA4908\_IN.tpl
  - VDA4908\_OUT.tpl
  - Sys\_Import\_Header.tpl
7. Click **Open**.

The translation objects are now registered and can be used.

---

## Setting the Import Path

### About this task

Use this procedure to set the Sterling Gentran:Server Import Path.

### Procedure

1. From the Windows Start menu, select **Sterling Gentran:Server > Gentran Server Configuration**.
2. Select the **Imports** tab.
3. In the File Path box, enter `c:\gensrvnt tutorial\vda\*.txt`.
4. Select **Sys Header – VDA** from the Translation Object list.
5. Click **Move Up** so that the path you typed is moved to the top of the list and thus takes priority.

---

## Creating a Splitter Entry

### About this task

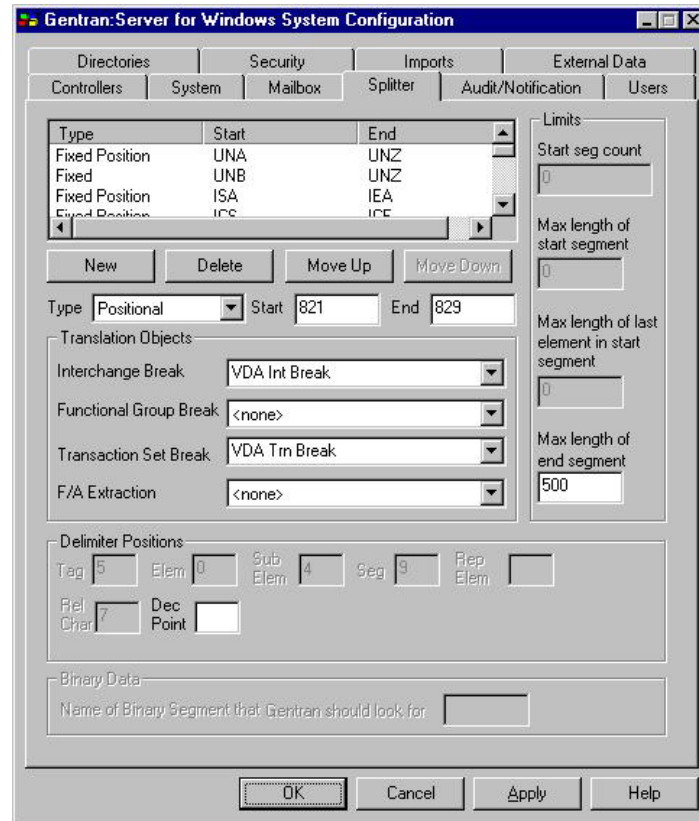
Use this procedure to create a new entry in the splitter table.

### Procedure

1. From the Windows Start menu, select **Sterling Gentran:Server > Gentran Server Configuration**.
2. Select the **Splitter** tab and click **New**.
3. Select **Positional** from the Type list.
4. In the Start box, enter **821**, which is the number for the header record in message 4908.
5. In the End box, enter **829**, which is the number for the trailer record in message 4908.
6. Select **VDA Int Break** from the Interchange Break list.
7. Select **VDA Trn Break** from the Transaction Set Break box.
8. Enter **500** in the Max length of End segment box.

9. Click **Apply**.

The dialog box should now look like this.



10. Click **OK** to save your changes and leave Configuration.

**Note:** You must repeat this procedure for every VDA message type that you intend to use.

---

## Creating a Trading Partner Mailbox

### About this task

Use this procedure to create a trading partner mailbox.

### Procedure

1. Select **Tools > Mailbox**.  
The Mailbox Server Manager is displayed.
2. Double-click **Gentran:Server Mailbox** to expand it. If the mailbox doesn't expand, the server has not been registered. To register it, follow these steps:
  - a. Right-click **Gentran:Server Mailbox** and select **Register Server**. The Register Server dialog box is displayed.
  - b. Enter the machine name of the of the primary system controller and click **OK**.
3. Double-click the name of the machine.
4. Right-click **Mailboxes** and select **Create**.  
The Create Mailbox Wizard is displayed.
5. Name the mailbox **VDA Outfile**.

**Note:** It is normal, but not required, to identify the partner in the mailbox. The sample VDA partner has not been created yet, so do not identify the partner.

The second Create Mailbox Wizard dialog box is displayed.

6. For the purposes of this tutorial, select **Yes, use this mailbox as a gateway**, and select **File System** as the type.
7. Click **Next** to see the summary screen so you can verify the information for this mailbox.
8. Click **Finish**.  
The File System Gateway properties dialog is displayed.
9. Select the **Extraction** tab to define the folder to which outbound VDA files are extracted.
10. Select **Extract files from this mailbox** and type `c:\gensrvnt\vda_out` in the box below it.
11. Select **Append all messages to a single file** and enter `vda4908.out` in the box below it.
12. Click **OK** to complete the process.

---

## Importing the Tutorial Partner Profile

The Partner Profile defines the parameters that control the processing and structure of inbound and outbound data. For this tutorial, we have provided a sample Partner Profile.

### About this task

Use this procedure to import the Partner Profile provided for this tutorial.

### Procedure

1. Select **Partner** from the Desktop.  
The Partner Editor is displayed.
2. Click **Import**.  
The Import File Select dialog box is displayed.
3. Browse to the `Gensrvnt\Tutorial\Vda` folder, select **VDAPART.PAR** and click **Open**.  
The Import dialog box is displayed.
4. Verify that the Partner to Import box shows **VDAPART** and click **Save**.  
The system imports the partner details and displays the Partner Editor dialog box. Sterling Gentran:Server prompts you for any additional information that it needs by displaying the appropriate Partner Editor dialog box.
5. Click **Save** when you have finished entering information.  
The system displays the message **Import Process Complete**. Please note any warnings or errors.
6. Click **OK**.
7. Click **Exit**.

---

## Creating an Outbound VDA Map

The normal procedure for using VDA requires that when you create a new map for outbound messages, you import an .ifd file for the output side of the map. For the purpose of this tutorial you will use a map that we have already created.

## About this task

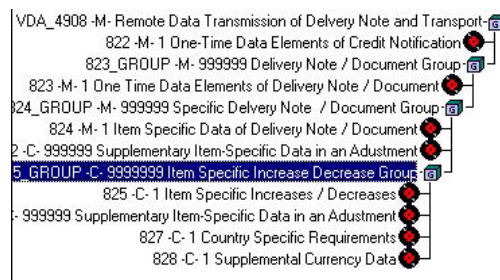
**Note:** The CDA version of a specified message is part of the name of the .IFD file. For example, the name of file 4905\_ED4\_0496.IFD indicates that this file contains the VDA structure of the VDA message 4905 of edition 4, that is dated from April 1996.

Use this procedure to create an Outbound VDA Map.

## Procedure

1. Open Sterling Gentran:Server Application Integration.
2. Select **File > Open**.
3. Browse to the Gensrvnt\Tutorial\Vda folder and select **VDA4908\_Out.map**.

The Output side of the map now looks like this:



4. Select the top row of the left side of the map, and select **View > Expand All**.
5. Select the top row of the right side of the map, and select **View > Expand All**.

**Note:** If you do not see the link lines, select **Options > Preferences** and click the **Links** tab. Select the **Show links to or from all visible elements** option.

6. Select **Edit > Details**.

The Translation Object Details dialog box is displayed.

**Note:** The entries in the Output section serve as the basis for defining the Trading Partner information.

---

## Compiling and Registering Tutorial Maps

Before you can use maps, you must compile and register them.

## About this task

The following maps are supplied with Sterling Gentran:Server for use with this tutorial:

- BrkIvda.map - Interchange break map
- BrkTvda.map - Transaction break map
- BldIvda.map - Interchange build map
- BldTvda.map - Transaction build map

Use this procedure to compile and register the tutorial maps.

## Procedure

1. To compile the maps, start Sterling Gentran:Server - Application Integration.
2. Select **File > Open**.

3. Select a .map file and click **OK**.
4. Select **File > Compile**.

**Note:** The compiled maps (\*.tpl files) are saved in the \TransObj folder.  
You are now ready to register the translation objects.

5. Select **View > Translation Objects**.  
The Translation Objects dialog box lists the templates that are already registered with Sterling Gentrans:Server.
6. Click **New** to open the Register Translation Object dialog box.
7. Select the files to register and click **Open**.  
The translation objects are now registered and can be used.

---

## Creating an Outbound Relationship

You need to identify your partner with the outbound translation objects that you have registered.

### About this task

Use this procedure to create an outbound trading partner relationship.

### Procedure

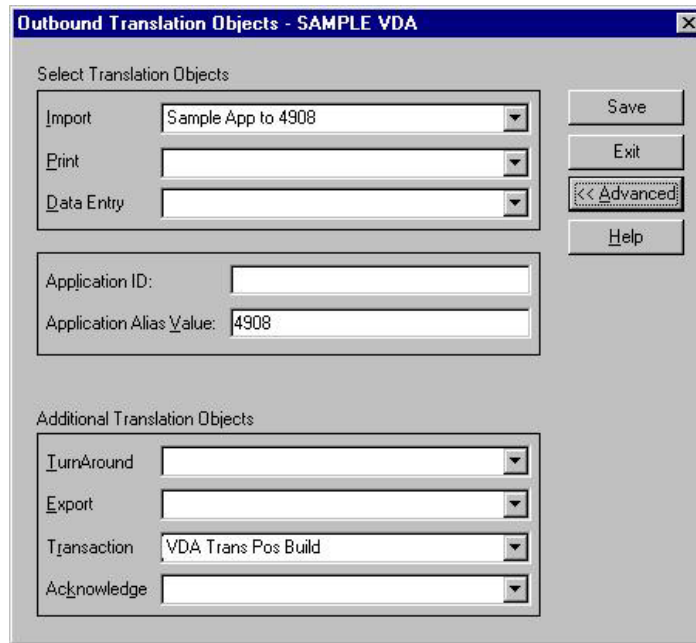
1. In Sterling Gentrans:Server, click **Partners** to display the list of partners.
2. From the **Partner Editor**, click **New**.
3. In the Profile ID box, enter VDAPART.
4. In the Name box, enter VDATEST.
5. In the EDI Code box and the Application Code box, enter VDATEST.
6. In the Mailbox list, select **VDA Outfile** or the name you gave when you created a mailbox.
7. Click **Save** to save the information and return to the Partner Editor.
8. Select the new partner and click **Outbound** to begin setting up the outbound relationship.  
The Outbound Relationship dialog box is displayed.
9. Click **New**
10. Enter Outbound 4908 in the new description box.
11. Click **Save** to return to the Outbound Relationship dialog box.
12. Select **V-VDA** from the Standard list.
13. Select **4908** from the Version and Transaction Set lists.

**Note:** These items are available here because you registered maps that contain this information in the Translation Objects Details dialog.

14. Click **Groups** and select **<none>**.
15. Click **Translation** to define the Outbound Translation Objects dialog box.
16. Select **Sample App to 4908** from the Import list.
17. Select **VDA Trn Build** from the Transaction list.

The Outbound Translation Objects dialog box should now look like this.





18. Click **Save**.
19. Click **Interchanges** from the Outbound Relationship dialog box to create an Outbound Interchange Entry.
20. Click **New** from the Outbound Interchange Select dialog box to create a new Outbound Interchange. Notice the value in the Interchange Transl. Obj. box.
21. Click **Envelope**.  
The Outbound VDA dialog box is displayed.
22. Complete the fields as necessary and click **Save**.  
See Outbound VDA Envelope Dialog Box for more information about how to complete this dialog box.
23. Click **Save** until you have closed all dialog boxes.

**Note:** If you have problems setting up the partner, import the sample partner file (Partners\vdapart.par) included for use with this tutorial. Make sure you have registered all the compiled templates first.

---

## Creating an Inbound VDA Map

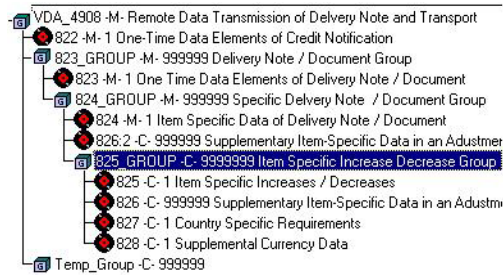
### About this task

Use this procedure to open, compile, and register the maps for inbound data.

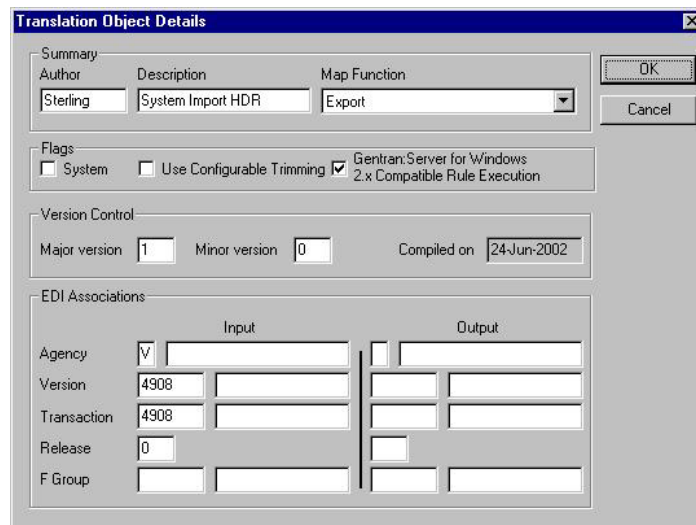
### Procedure

1. Open Sterling Gentran:Server Application Integration.
2. Select **File > Open**.
3. Browse to Gensrvnt\Tutorial\Vda folder and select **VDA4908\_IN.map**.

The Input side of the map now looks like this:



4. Select **File > Compile** and save the file as a .tpl file in the \TransObj folder.
5. To view the Translation Object Details, select **Edit > Details**.  
The Translation Object Details dialog box should look like this.



6. Register the translation object.  
See Compiling and Registering Tutorial Maps for more information.

## Creating an Inbound Relationship

You need to identify your trading partner with the inbound translation objects that you created, compiled, and registered.

### About this task

Use this procedure to create an inbound Trading Partner Relationship.

### Procedure

1. From the Partner Editor, select the VDA partner that you created earlier and click **Inbound**.
2. Click **New**.
3. Enter Inbound 4908 as the description and click **Save**.
4. Select **Inbound 4908** from the Relationship Description list.
5. Select **V-VDA** from the Standard list.
6. Select **4908** from the Version and Transaction Set lists.
7. Click **Groups** and select **<none>**.
8. Click **Interchanges**.

- The Inbound Interchange Entry dialog box is displayed.
9. Click **Translation** to define the Inbound Translation Objects.
  10. Select **4908 to Positional** from the Export File list.
  11. Select **VDA Trn Break** from the Transaction list.
  12. Click **Save**.
  13. Click **Interchanges** from the Inbound Relationship dialog box to create an Inbound Interchange Entry.
  14. Click **New** to create a new Inbound Interchange.
  15. Select **821** from the Interchange ID list.
- Note:** 821 is the header record in message 4908.
16. Click **Save** until you close all Partner Editor dialog boxes.

---

## Processing a Sample Outbound Application File

To test your work in this tutorial, you will import an application file, post it, and send it through the Sterling Gentran:Server system.

### About this task

We have provided a simple application file (Gensrvnt\Tutorial\Vda\VDA4908.vda) to serve as the basis for our test.

Use this procedure to test outbound processing.

### Procedure

1. Open Sterling Gentran:Server and click **Workspace**.
2. Click **Import** to import the application file.
3. Use the Application Files to Import dialog box to select the file **VDA4908.vda** in the Gensrvnt\Tutorial\Vda folder and click **Open**.  
After a few seconds, the imported file appears in the Workspace.
4. To view the imported file, select it and do the following:
  - Click **View**.
  - Leave **Raw EDI** selected on the View Choice dialog box.
  - Click **OK**.You can see that it has been translated to VDA format.
5. In the Workspace dialog box, select the imported file and click **Post** to send it to the Out box.
6. Click **Close** to close the Workspace.
7. Click **Out** on the Sterling Gentran:Server desktop.  
The Out Documents Summary is displayed.
8. Select **VDAPART 4908** and click **View** to open the document-level Out Documents dialog box.
9. Select the document you posted and click **Send** to send it to the Out Drawer.
10. After the communications session is opened and the document is sent, click **Close** twice to close both of the Document Summary dialog boxes.
11. Click **Out Drawer** on the Sterling Gentran:Server desktop.  
The Out Drawer Summary dialog box is displayed.

12. Select **VDAPART 4908** and click **View** to open the document-level Out Drawer dialog box.  
As indicated in the Status column, the VDAPART 4908 document has been sent.

---

## Processing a Sample Inbound Application File

To test inbound processing, you will process the file that you transmitted and receive it as an inbound VDA file.

### About this task

Use this procedure to process a VDA file and export it to your application format.

### Procedure

1. Open Sterling Gentran:Server and select **Commands > Process File**.
2. In the Process File dialog box, select file **VDA4908i.txt** from the Gensrvnt\Tutorial\Vda folder and click **Open**.  
The CommPost dialog box is displayed, indicating the progress of the translation.
3. Click **In** to open the In Documents Summary dialog box.
4. Select the **VDAPART 4908** line and click **View** to open the document-level In Documents dialog box.
5. Select the **VDAPART 4908** document and click **Export**.  
The Select Export Method dialog box is displayed.
6. Select **Export to Single File**.
7. Select the folder and file name for the export from the Choose file to Export document dialog box.  
A dialog box is displayed to show progress as Sterling Gentran:Server translates the VDA file into the application format.

---

## Notices

This information was developed for products and services offered in the U.S.A.

IBM may not offer the products, services, or features discussed in this document in other countries. Consult your local IBM representative for information on the products and services currently available in your area. Any reference to an IBM product, program, or service is not intended to state or imply that only that IBM product, program, or service may be used. Any functionally equivalent product, program, or service that does not infringe any IBM intellectual property right may be used instead. However, it is the user's responsibility to evaluate and verify the operation of any non-IBM product, program, or service.

IBM may have patents or pending patent applications covering subject matter described in this document. The furnishing of this document does not grant you any license to these patents. You can send license inquiries, in writing, to:

*IBM Director of Licensing*

*IBM Corporation*

*North Castle Drive*

*Armonk, NY 10504-1785*

*U.S.A.*

For license inquiries regarding double-byte character set (DBCS) information, contact the IBM Intellectual Property Department in your country or send inquiries, in writing, to:

*Intellectual Property Licensing*

*Legal and Intellectual Property Law*

*IBM Japan Ltd.*

*19-21, Nihonbashi-Hakozakicho, Chuo-ku*

*Tokyo 103-8510, Japan*

**The following paragraph does not apply to the United Kingdom or any other country where such provisions are inconsistent with local law:**

INTERNATIONAL BUSINESS MACHINES CORPORATION PROVIDES THIS PUBLICATION "AS IS" WITHOUT WARRANTY OF ANY KIND, EITHER EXPRESS OR IMPLIED, INCLUDING, BUT NOT LIMITED TO, THE IMPLIED WARRANTIES OF NON-INFRINGEMENT, MERCHANTABILITY OR FITNESS FOR A PARTICULAR PURPOSE. Some states do not allow disclaimer of express or implied warranties in certain transactions, therefore, this statement may not apply to you.

This information could include technical inaccuracies or typographical errors. Changes are periodically made to the information herein; these changes will be

incorporated in new editions of the publication. IBM may make improvements and/or changes in the product(s) and/or the program(s) described in this publication at any time without notice.

Any references in this information to non-IBM Web sites are provided for convenience only and do not in any manner serve as an endorsement of those Web sites. The materials at those Web sites are not part of the materials for this IBM product and use of those Web sites is at your own risk.

IBM may use or distribute any of the information you supply in any way it believes appropriate without incurring any obligation to you.

Licensees of this program who wish to have information about it for the purpose of enabling: (i) the exchange of information between independently created programs and other programs (including this one) and (ii) the mutual use of the information which has been exchanged, should contact:

*IBM Corporation*

*J46A/G4*

*555 Bailey Avenue*

*San Jose, CA 95141-1003*

*U.S.A.*

Such information may be available, subject to appropriate terms and conditions, including in some cases, payment of a fee.

The licensed program described in this document and all licensed material available for it are provided by IBM under terms of the IBM Customer Agreement, IBM International Program License Agreement or any equivalent agreement between us.

Any performance data contained herein was determined in a controlled environment. Therefore, the results obtained in other operating environments may vary significantly. Some measurements may have been made on development-level systems and there is no guarantee that these measurements will be the same on generally available systems. Furthermore, some measurements may have been estimated through extrapolation. Actual results may vary. Users of this document should verify the applicable data for their specific environment.

Information concerning non-IBM products was obtained from the suppliers of those products, their published announcements or other publicly available sources. IBM has not tested those products and cannot confirm the accuracy of performance, compatibility or any other claims related to non-IBM products. Questions on the capabilities of non-IBM products should be addressed to the suppliers of those products.

All statements regarding IBM's future direction or intent are subject to change or withdrawal without notice, and represent goals and objectives only.

All IBM prices shown are IBM's suggested retail prices, are current and are subject to change without notice. Dealer prices may vary.

This information is for planning purposes only. The information herein is subject to change before the products described become available.

This information contains examples of data and reports used in daily business operations. To illustrate them as completely as possible, the examples include the names of individuals, companies, brands, and products. All of these names are fictitious and any similarity to the names and addresses used by an actual business enterprise is entirely coincidental.

#### COPYRIGHT LICENSE:

This information contains sample application programs in source language, which illustrate programming techniques on various operating platforms. You may copy, modify, and distribute these sample programs in any form without payment to IBM, for the purposes of developing, using, marketing or distributing application programs conforming to the application programming interface for the operating platform for which the sample programs are written. These examples have not been thoroughly tested under all conditions. IBM, therefore, cannot guarantee or imply reliability, serviceability, or function of these programs. The sample programs are provided "AS IS", without warranty of any kind. IBM shall not be liable for any damages arising out of your use of the sample programs.

Each copy or any portion of these sample programs or any derivative work, must include a copyright notice as follows:

© IBM 2012. Portions of this code are derived from IBM Corp. Sample Programs. © Copyright IBM Corp. 2012.

If you are viewing this information softcopy, the photographs and color illustrations may not appear.

#### **Trademarks**

IBM, the IBM logo, and [ibm.com](http://www.ibm.com)<sup>®</sup> are trademarks or registered trademarks of International Business Machines Corp., registered in many jurisdictions worldwide. Other product and service names might be trademarks of IBM or other companies. A current list of IBM trademarks is available on the Web at "Copyright and trademark information" at <http://www.ibm.com/legal/copytrade.shtml>.

Adobe, the Adobe logo, PostScript, and the PostScript logo are either registered trademarks or trademarks of Adobe Systems Incorporated in the United States, and/or other countries.

IT Infrastructure Library is a registered trademark of the Central Computer and Telecommunications Agency which is now part of the Office of Government Commerce.

Intel, Intel logo, Intel Inside, Intel Inside logo, Intel Centrino, Intel Centrino logo, Celeron, Intel Xeon, Intel SpeedStep, Itanium, and Pentium are trademarks or registered trademarks of Intel Corporation or its subsidiaries in the United States and other countries.

Linux is a registered trademark of Linus Torvalds in the United States, other countries, or both.

Microsoft, Windows, Windows NT, and the Windows logo are trademarks of Microsoft Corporation in the United States, other countries, or both.

ITIL is a registered trademark, and a registered community trademark of the Office of Government Commerce, and is registered in the U.S. Patent and Trademark Office.

UNIX is a registered trademark of The Open Group in the United States and other countries.

Java™ and all Java-based trademarks and logos are trademarks or registered trademarks of Oracle and/or its affiliates.

Cell Broadband Engine is a trademark of Sony Computer Entertainment, Inc. in the United States, other countries, or both and is used under license therefrom.

Linear Tape-Open, LTO, the LTO Logo, Ultrium and the Ultrium Logo are trademarks of HP, IBM Corp. and Quantum in the U.S. and other countries.

Connect Control Center®, Connect:Direct®, Connect:Enterprise®, Gentran®, Gentran:Basic®, Gentran:Control®, Gentran:Director®, Gentran:Plus®, Gentran:Realtime®, Gentran:Server®, Gentran:Viewpoint®, Sterling Commerce™, Sterling Information Broker®, and Sterling Integrator® are trademarks or registered trademarks of Sterling Commerce®, Inc., an IBM Company.

Other company, product, and service names may be trademarks or service marks of others.



---

# Index

## E

- envelopes
  - fields and message headers 2
  - outbound VDA 2

## F

- features 1

## I

- import paths
  - setting 6
- inbound relationships
  - creating 12
- installation
  - overview 1

## M

- mailboxes
  - creating a trading partner mailbox 7
  - registering 7
- maps
  - compiling and registering 9
  - inbound VDA map 11
  - outbound VDA maps 9
  - registering 5
  - supplied maps 1
  - tutorial 9
- message types
  - supported 1

## O

- outbound relationships
  - creating 10

## P

- partner profiles
  - importing 8

## S

- splitter entries
  - creating 6
- supplied maps 1

## T

- testing
  - inbound processing 14
  - outbound processing 13
- translation objects
  - registering 5

## tutorial

- compiling and registering tutorial maps 9
- create an inbound relationship 12
- creating a splitter entry 6
- creating a trading partner mailbox 7
- creating an inbound map 11
- creating an outbound map 9
- creating an outbound relationship 10
- importing a partner profile 8
- installing data 5
- overview 5
- registering translation objects 5
- setting the import path 6
- testing inbound processing 14
- testing outbound processing 13







Product Number: 5725-D09

Printed in USA