

Sterling Connect:Direct



# Enterprise Deployment Guide

*Version 1.0*



Sterling Connect:Direct



# Enterprise Deployment Guide

*Version 1.0*

**Note**

Before using this information and the product it supports, read the information in "Notices" on page 43.

This edition applies to version 4.1 of IBM Sterling Connect:Direct for UNIX, version 4.6 of IBM Sterling Connect:Direct for Microsoft Windows, and to all subsequent releases and modifications until otherwise indicated in new editions.

© **Copyright IBM Corporation 2013.**

US Government Users Restricted Rights – Use, duplication or disclosure restricted by GSA ADP Schedule Contract with IBM Corp.

---

# Contents

<b>Chapter 1. Managed File Transfer enterprise deployment solution . . . . .</b>	<b>1</b>
--	----------

<b>Chapter 2. Enterprise deployment overview . . . . .</b>	<b>5</b>
Requirements for enterprise deployment . . . . .	5

<b>Chapter 3. Steps for planning an enterprise deployment . . . . .</b>	<b>7</b>
Identify the target systems. . . . .	7
Create deployment groups for enterprise deployment	8
Security overview . . . . .	8
Create an installation package for each group . . . . .	9
Test each package. . . . .	9
Deploy each group package . . . . .	9

<b>Chapter 4. Use the Sterling Connect:Direct silent installation for enterprise deployment . . . . .</b>	<b>11</b>
Sterling Connect:Direct for UNIX silent installation	11
Sterling Connect:Direct for UNIX options file and command-line parameters . . . . .	12
cdinstall_a script operation . . . . .	14
Basic installation and configuration . . . . .	15
Installing Sterling Connect:Direct for UNIX. . . . .	15
Upgrading or applying a fix pack to Sterling Connect:Direct for UNIX . . . . .	15
Uninstalling Sterling Connect:Direct for UNIX. . . . .	15
Complete installation and configuration . . . . .	16
Installing Sterling Connect:Direct for UNIX with optional files . . . . .	16
Upgrading or applying a fix pack to Sterling Connect:Direct for UNIX with optional files . . . . .	16
Configuring and monitoring Sterling Connect:Direct for UNIX with Sterling Control Center . . . . .	17
Sterling Connect:Direct for Microsoft Windows silent installation . . . . .	17
Sterling Connect:Direct for Microsoft Windows deployment options . . . . .	18

Installation executable silent operation . . . . .	21
Installing Sterling Connect:Direct for Microsoft Windows . . . . .	21
Upgrading Sterling Connect:Direct for Microsoft Windows . . . . .	22
Applying a fix pack to Sterling Connect:Direct for Microsoft Windows . . . . .	22
Uninstalling Sterling Connect:Direct for Microsoft Windows . . . . .	23
Configuring and monitoring Sterling Connect:Direct for Microsoft Windows with Sterling Control Center . . . . .	23

<b>Chapter 5. Tivoli Endpoint Manager overview . . . . .</b>	<b>25</b>
Getting Started with the CreateTEMTasks utility . . . . .	25
CTTU data file . . . . .	26
CTTU properties file . . . . .	26
CTTU tasks file . . . . .	27
Sterling Connect:Direct for UNIX tasks file . . . . .	27
Sterling Connect:Direct for Microsoft Windows tasks file . . . . .	28
Sample tasks file. . . . .	30
Running the CTTU . . . . .	30
Running the TEM tasks . . . . .	31

<b>Chapter 6. Sterling Connect:Direct for UNIX deployment messages . . . . .</b>	<b>35</b>
--	-----------

<b>Chapter 7. Configure new nodes in Sterling Control Center. . . . .</b>	<b>39</b>
Importing certificates . . . . .	39
Creating server node entries. . . . .	39

<b>Chapter 8. Troubleshooting . . . . .</b>	<b>41</b>
---	-----------

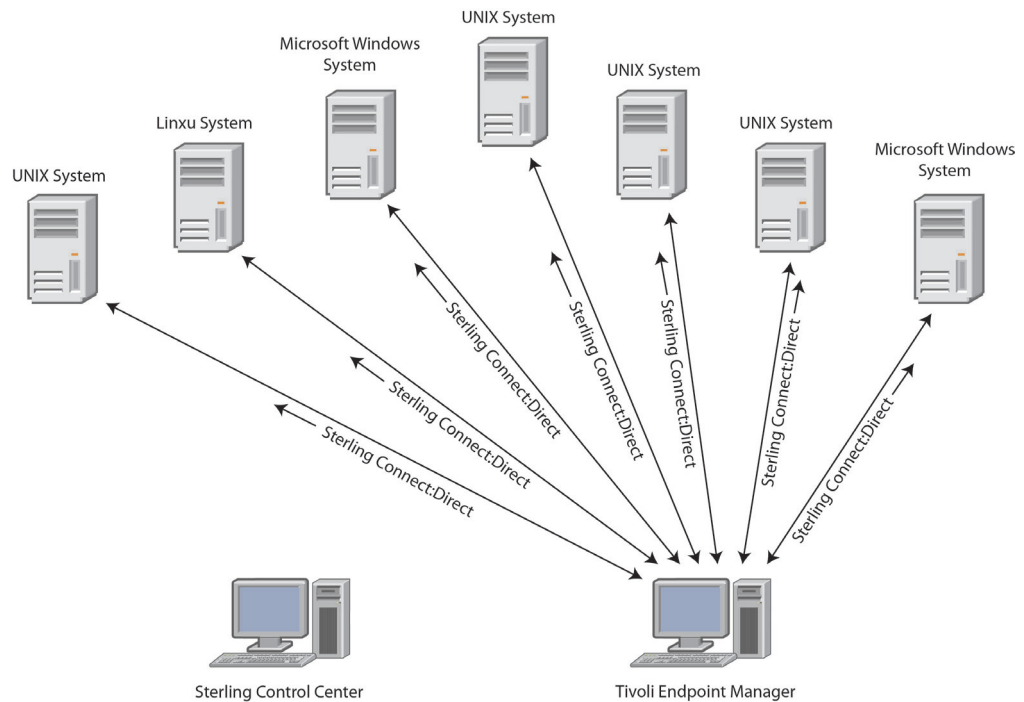
<b>Notices . . . . .</b>	<b>43</b>
--------------------------	-----------



---

## Chapter 1. Managed File Transfer enterprise deployment solution

Deploying a Managed File Transfer (MFT) solution across your organization is a major step that you can take toward a comprehensive data movement strategy. The IBM® enterprise deployment solution helps your organization adopt a customer-centric MFT architecture to realize the full potential of an MFT solution.

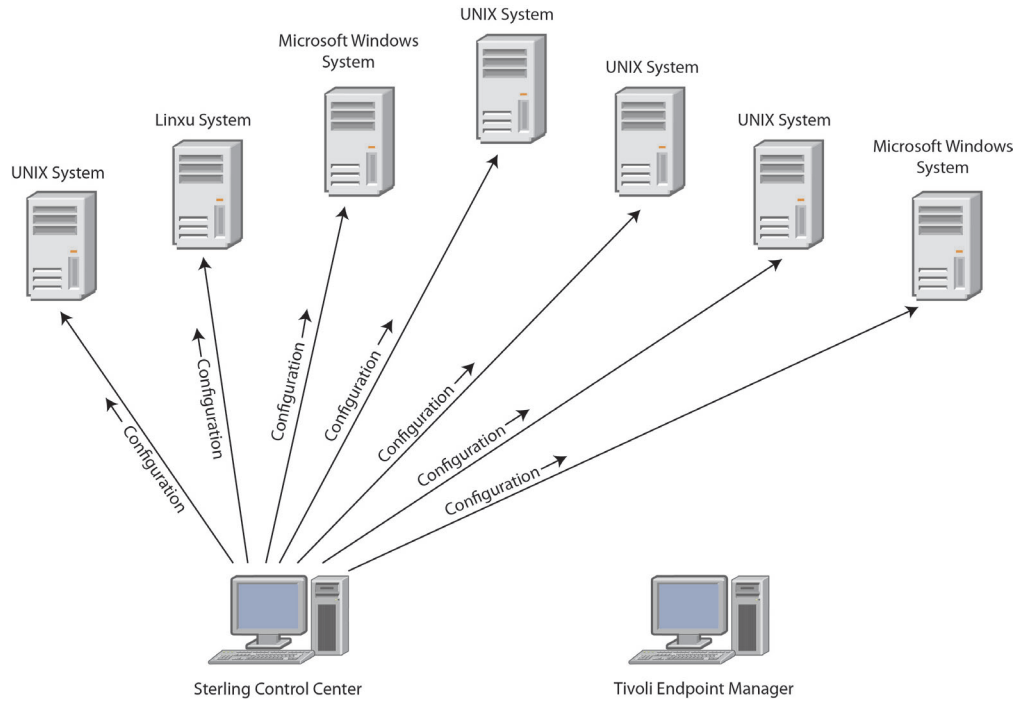


### Sterling Connect:Direct®

Automate the deployment of Sterling Connect:Direct for UNIX and Sterling Connect:Direct for Microsoft Windows across your enterprise with the IBM Sterling Connect:Direct installation. Automated deployment of Sterling Connect:Direct, coupled with the configuration and monitoring capabilities of Sterling Control Center, enables the following benefits:

- Reduced total cost of ownership
- Improved operational efficiencies
- Improved governance and auditability over the data that is being moved

Sterling Connect:Direct is point-to-point (peer-to-peer) file-based integration middleware that is meant for 24x365 unattended operation, which provides assured delivery, high-volume, and secure data exchange within and between enterprises. It is optimized for high performance and throughput. It also moves files that contain any type of data (text, EDI, binary, digital content, image) across multiple hardware types and operating systems, disparate file systems, and disparate media. It is used by many industries throughout the world to move large volumes of data and for connecting to remote offices.



## Sterling Control Center

After you deploy Sterling Connect:Direct across your enterprise, use Sterling Control Center to configure and monitor your Sterling Connect:Direct nodes from a central location.

Sterling Control Center is a centralized monitoring and management system. It gives operations personnel the capability to continuously monitor business activities across the enterprise for the following server types:

- Sterling Connect:Direct
- Sterling Connect:Direct File Agent
- IBM Sterling Connect:Enterprise®
- IBM Sterling B2B Integrator
- IBM Sterling File Gateway
- IBM Sterling Connect:Express
- IBM QuickFile
- Many FTP servers

In addition, you can manage the configurations and licenses of Sterling Connect:Direct servers.

## Tivoli® Endpoint Manager

IBM Tivoli Endpoint Manager delivers an easy-to-manage, quick-to-deploy solution that provides unified, real-time visibility to install, upgrade, patch, and uninstall applications, such as Sterling Connect:Direct, across all endpoints from a single console. It offers the following capabilities:

- Single intelligent agent for continuous endpoint self-assessment and policy enforcement
- Real-time visibility and control from a single management console



- Manage hundreds of thousands of endpoints regardless of location, connection type, or status. Endpoints include network-attached servers and desktops, Internet-connected notebooks, mobile devices, and specialized equipment such as point-of-sale (POS) devices, ATMs, and self-service kiosks.
- Support heterogeneous hardware and operating systems: Microsoft® Windows®, UNIX®, Linux® and Mac operating systems



---

## Chapter 2. Enterprise deployment overview

As the number of Sterling Connect:Direct for UNIX and Sterling Connect:Direct for Microsoft Windows installations increases, so does the time and effort that is needed for new installations and upgrades. Especially when administrators perform these operations one installation at a time.

### Silent installations on individual systems

You can use an installation script for Sterling Connect:Direct for UNIX to silently and automatically install the product. The silent installation for Sterling Connect:Direct for Microsoft Windows supports enterprise deployment.

### Automated installations on multiple systems

Instead of performing silent installations one system at a time, you can automate deployment on multiple systems with a single installation package. Use these installation solutions with existing software deployment systems, such as the Tivoli Endpoint Manager.

Then, you can use IBM Sterling Control Center for post-installation configuration and monitoring tasks. Although it is possible to combine installation and configuration in a single step, in this document the installation and configuration are treated as separate steps. During installation, perform the minimum configuration that is required to allow Sterling Control Center to establish a secure connection with Sterling Connect:Direct. Then, use Sterling Control Center for production configuration and subsequent configuration updates.

Another tool that you can use for post-installation and ongoing configuration management of Sterling Connect:Direct servers is the Sterling Control Center API (CCAPI). Use the CCAPI, a Java program, to programmatically create and maintain Sterling Connect:Direct server objects for large-scale efficiency.

These objects include:

- Functional authorities
- Initialization parameters
- Netmap nodes
- Netmap modes
- Netmap communication paths
- Sterling Connect:Direct Secure Plus nodes
- Sterling Connect:Direct Secure Plus key certificates
- Sterling Connect:Direct Secure Plus trusted certificates
- Sterling Connect:Direct Secure Plus cipher suites
- User proxies

---

## Requirements for enterprise deployment

To automate the Sterling Connect:Direct deployment, your environment must meet the following requirements:

- A software deployment tool, such as IBM Tivoli Endpoint Manager, to create a deployment package and distribute it to the target systems
- A test environment to test a deployment before you deploy to your production environment
- Sterling Control Center to perform post-installation configuration (optional)

---

## Chapter 3. Steps for planning an enterprise deployment

To ensure a successful enterprise deployment, you can create and follow a detailed deployment plan.

To plan for an enterprise deployment, follow these steps:

1. Identify the attributes of systems where you plan to install Sterling Connect:Direct. Attributes can include operating system type and the attributes of the Sterling Connect:Direct servers, such as users and netmaps.
2. Define one or more groups of systems with common attributes.
3. Create a deployment package for each group of systems.
4. Incorporate site-specific security considerations.
5. Deploy and verify the installation package for each group on a test system with identical deployment attributes.
6. Deploy and verify each group deployment package on all systems in the group.

---

### Identify the target systems

Take an inventory of the systems where you plan to deploy Sterling Connect:Direct.

You must identify the operating system and hardware because each platform has a different installation program that requires a unique deployment package.

Refer to the following table for an example of how you might organize attribute information.

Attribute	System 1	System 2	System 3	System 4	System 5	System 6
Owning organization	IT	IT	DEV	TEST	APPDEV	APPDEV
Hardware architecture	x86	x86	Sparc	x86	x86	x86
Operating system	Microsoft Windows	Microsoft Windows	Solaris	Linux	Linux	Linux
Ports	11363, 11364	11363, 11364	default (1363, 1364)	default (1363, 1364)	default (1363, 1364)	default (1363, 1364)
Initparm	Win-Std-Init	Win-Std-Init	Dev-Init	Test-Init	APP1_Init	APP1_Init
Netmap	Win-Std-Net	Win-Std-Net	Dev-Net	Test-Net	APP1_Net	APP1_Net
Userfile	IT-General-User	IT-General-User	Dev-User	Test-User	APP1_User	APP1_User
Xlate tables	na	na	na	na	APP1_XLATE	APP1_XLATE
Installation directory	default	default	/development/cdu/cdu001	/test/cdu/test001	/appdev/cdu/app1	/appdev/cdu/app1
Authorization type	ID and password	ID and password	Secure Point of Entry	Secure Point of Entry	Secure Point of Entry	Secure Point of Entry
Certificates	Single keycert for all nodes	Single keycert for all nodes	Single keycert for all nodes	Single keycert for all nodes	Unique keycert for each node	Unique keycert for each node

Attribute	System 1	System 2	System 3	System 4	System 5	System 6
Sterling Connect:Direct administrator user ID	cdadmin	cdadmin	cdadmin	cdadmin	cdadmin	cdadmin

---

## Create deployment groups for enterprise deployment

Group systems according to their common attributes to determine a set of systems where you can deploy a single package for each Sterling Connect:Direct node in that group. The larger the deployment group, the less work that is required to deploy to all the systems in that group.

The following table provides an example of a starting point for grouping instances of Sterling Connect:Direct with common characteristics.

Attributes	Group 1	Group 2	Group 3	Group 4
Owning organization	IT	DEV	Test	AppDev
Number of systems	2	1	1	2
Operating system	Microsoft Windows	Solaris	Linux	Linux
System architecture	x86	Sparc	x86	x86
Ports	11363, 11364	default (1363, 1364)	31363, 31364	default (1363, 1364)
Initparm	Win-Std-Init	Dev-Init	Test-Init	APP1_Init
Netmap	Win-Std-Net	Dev-Net	Test-Net	APP1_Net
Userfile	IT-General-User	Dev-User	Test-User	APP1_User
XLATE tables	na	na	na	APP1_Xlate
Install directory	C:\Program Files (x86)\Sterling Commerce\Connect Direct v4.6.00	/development/cdu/cdu001	/test/cdu/cdu001	/appdev/cdu/cdu001
Authorization type	ID and password	Secure Point of Entry	Secure Point of Entry	Secure Point of Entry
Certificates	Single keycert for all nodes	Single keycert for all nodes	Unique keycert for each node	Unique keycert for each node
Sterling Connect:Direct administrator user ID	cdadmin	cdadmin	cdadmin	cdadmin

---

## Security overview

You must implement security and encryption to the degree appropriate for your deployment and environment. Review the following tasks that you must take to ensure a secure deployment.

You must set up the Sterling Connect:Direct administrator user ID on all target systems.

In order for Sterling Control Center to establish a secure connection with the Sterling Connect:Direct nodes after they are installed, install the nodes with a keycert. You must also configure the Secure+ .Client record to use the keycert. If you establish a secure connection from a client, you can safely complete more security configuration tasks. These configuration tasks include adding users and updating keycerts, with the Sterling Connect:Direct API. For more information, see the *IBM Sterling Control Center Getting Started Guide*.

For ease of deployment, use a single keycert for all the nodes in a group during deployment. A single keycert facilitates a secure connection so that you can use Sterling Control Center to apply production keycerts to the deployed nodes. For more information, see the *IBM Sterling Control Center Configuration Management Guide*.

**CAUTION:**

**Encrypt the keycert passphrase to keep it protected. Decrypt the keycert passphrase immediately before you install a Sterling Connect:Direct node.**

**Tip:** If you use Tivoli Endpoint Manager for deployment, the passphrase is encrypted for you.

---

## Create an installation package for each group

No matter which deployment tool you use, you must provide it with the files that make up a Sterling Connect:Direct silent installation.

For Sterling Connect:Direct for UNIX, the `cdinstall_a`, `cdinstall`, and `cpio` archive files are required. If you do more than a basic installation, you might also need the options file, Sterling Connect:Direct Secure Plus configuration command file, other keycerts, `initparm.cfg` file, `netmap.cfg` file, and `userfile.cfg` file. For more information, see “Sterling Connect:Direct for UNIX silent installation” on page 11.

For Sterling Connect:Direct for Microsoft Windows, you must include the installation executable. The options `cd_srv.ini` file, keycert file, `initparm.cfg` file, `netmap.cfg` file, and `userfile.cfg` file are optional. For more information, see “Sterling Connect:Direct for Microsoft Windows silent installation” on page 17.

---

## Test each package

Choose a test system for installing the newly created installation package. It must have the same attributes as the systems in the group for which the package was created.

Each deployment tool has its own error report mechanism. However, you can use the return code from the Sterling Connect:Direct silent installation and the installation log to assist with troubleshooting.

---

## Deploy each group package

After you successfully test the deployment package, you can deploy it to a group of production or test systems.

Sterling Connect:Direct for UNIX does some minimal deployment validation. For additional validation, you can use Sterling Control Center to access each Sterling Connect:Direct node by using a secure connection to do the following tasks:

- Verify that each deployed Sterling Connect:Direct node is up and running and connectable by Sterling Control Center
- Validate the initial configuration of each Sterling Connect:Direct node

For more information, see the *IBM Sterling Control Center System Administration Guide*.



---

## Chapter 4. Use the Sterling Connect:Direct silent installation for enterprise deployment

The following sections provide step-by-step instructions for command-line deployment of Sterling Connect:Direct for UNIX and Sterling Connect:Direct for Microsoft Windows by starting their silent installations.

---

### Sterling Connect:Direct for UNIX silent installation

The following installation and configuration files are required for a silent installation of Sterling Connect:Direct for UNIX:

- `cdinstall_a` script
- `cdinstall` script
- `cpio` file (installation archive)
- `keycert`
- Options file (unless you specify all parameters on the command line)

On the command line, you can specify parameters, such as the parameters in the following list:

- `keycert` passphrase
- Sterling Connect:Direct server port
- Sterling Connect:Direct client port
- Sterling Connect:Direct administrator user ID

Refer to “Sterling Connect:Direct for UNIX options file and command-line parameters” on page 12 for a description of the options file and command-line parameters. The options file and command-line parameters are important when you do not use Sterling Control Center for configuration tasks or an enterprise deployment tool.

**Attention:** Command-line parameters override the settings in the options file. The `cdinstall_a` script provides the essential installation and configuration capabilities for deploying Sterling Connect:Direct for UNIX. This script uses the `cdinstall` and `cdcust` scripts.

The `cdinstall_a` script reads the options file, command-line arguments, or both for the necessary arguments that are needed for execution. This information includes the deployment command to run: `install`, `upgrade`, or `uninstall`, the installation directory for Sterling Connect:Direct, the platform-specific `cpio` file, and other information.

Refer to “`cdinstall_a` script operation” on page 14 for a detailed description of how `cdinstall_a` operates. This information is essential if you do not use Sterling Control Center for configuration tasks or an enterprise deployment tool.

**Restriction:** Different UNIX and Linux operating systems have different command-line length limitations. An effective method for silent installations is to use an options file to specify your parameters instead of the command line.

The following installation and configuration files are optional for a silent installation of Sterling Connect:Direct for UNIX:

- Sterling Connect:Direct Secure Plus configuration command file (permits extended configuration of Sterling Connect:Direct Secure Plus)
- initparm.cfg
- netmap.cfg
- userfile.cfg
- Xlate tables (the file extension must be .sxl1t)
- More keycert files to use with the Sterling Connect:Direct Secure Plus configuration command line (the file extension must be .pem, .cer, or .crt)

Refer to the *IBM Sterling Connect:Direct for UNIX Administration Guide* for more information about .cfg files and xlate tables.

Refer to the *IBM Sterling Connect:Direct Secure Plus for UNIX Administration Guide* for more information about the Sterling Connect:Direct Secure Plus configuration command file and keycert files.

## Sterling Connect:Direct for UNIX options file and command-line parameters

The options file contains shell script variables. `cdinstall_a` “source includes” the options file into its execution environment so that the variables are available. However, it will do so only after it runs a security check that UNIX or Linux commands are not specified as values for the parameter variables or as individual commands. This guards against a code injection attack.

This point is important because `cdinstall_a` is started under the root account. Therefore, the administrator can run arbitrary commands without `cdinstall_a`. However, other users or applications without root privileges can initiate an automated installation. These users or applications might specify UNIX or Linux commands in the options file, which would be processed under root. This situation creates a security issue.

The following table lists and describes these variables. If you do not specify the full path of the files in the installation package, then the path defaults to the directory where `cdinstall_a` was started. For example, the path name for the `cpio` file defaults to the package directory where `cdinstall_a` is located if you do not explicitly specify a path.

Variable name	Command-line arguments	Default value	Description
<code>cdai_installCmd=&lt;install   upgrade   uninstall&gt;</code>	<code>--installCmd</code>	None. Required parameter.	Specifies the type of processing to use.
<code>cdai_cpioFile=&lt;cpio file name&gt;</code>	<code>--cpioFile</code>	<code>cdunix</code>	The installation <code>cpio</code> name.  If it is in a different directory than the package directory, the full path must be specified.

Variable name	Command-line arguments	Default value	Description
cdai_installDir=<target installation directory>	--installDir	None. Required parameter.	Where to install Sterling Connect:Direct. The administrator can choose any accessible location, but the full path must be specified
cdai_localNodeName=<Sterling Connect:Direct local name>	--localNodeName	Host name (required for installation only).	Name to assign to the local Sterling Connect:Direct. Name is shortened to 16 characters if necessary. Specify uname to ensure that the host name of the system is used.
cdai_acquireHostnameOrIP=<h   fqdn   ip4   ip6   string>	--acquireHostnameOrIP	h (required for installation only).	Specify host name, fully qualified domain name, IP v4 address, or IP v6 address. Any other strings are interpreted as IP addresses or names. <ul style="list-style-type: none"> <li>• h=host name</li> <li>• fqdn=fully qualified domain name</li> <li>• ip4=IPv4 address</li> <li>• ip6=IPv6 address</li> </ul> String can be 0.0.0.0, 0:0:0:0:0:0:0:0, ::, 192.168.0.100, or other valid IP address.
cdai_serverPort=<port number>	--serverPort	1364	Sterling Connect:Direct to Sterling Connect:Direct
cdai_clientPort=<port number>	--clientPort	1363	CLI/API port
cdai_localCertFile=<certfile>	--localCertFile	None. (required for installation only).	Keycert file for Sterling Connect:Direct Secure Plus local node and client
cdai_localCertPassphrase=<passphrase>	--localCertPassphrase	None. (required for installation only).	Passphrase for keycert file
cdai_adminUserid=<user ID>	--adminUserid	None. (required for installation only).	System user ID to use for the Sterling Connect:Direct administrator user ID

Variable name	Command-line arguments	Default value	Description
cdai_trace=y n	--trace	n	Enables display of debugging information
cdai_spConfig=<file name>	--spConfig	None.	Customized text file to update Sterling Connect:Direct Secure Plus Parmfile as necessary.  If <b>cdai_spConfig</b> is not specified, then only basic Sterling Connect:Direct Secure Plus configuration is used with the keycert and trusted root files.

The following options file includes sample values for each variable:

```
cdai_trace="y"
cdai_installCmd="install"
cdai_cpioFile="/netshare/cdu/aix/cdunix"
cdai_installDir="/test/cdu/test001"
cdai_spConfig=spcmds.txt
cdai_localNodeName=uname
cdai_localNodeName=prod1.tul.company.com
cdai_acquireHostnameOrIP=ip4
cdai_serverPort=13364
cdai_clientPort=13363
cdai_localCertFile="keycert.txt"
cdai_localCertPassphrase="password"
cdai_adminUserId=kstep1
```

## cdinstall\_a script operation

cdinstall\_a is a script that acts as a “wrapper” script for cdinstall to set up an installation environment. It also starts other installation and customization shell scripts and the following executables: cdinstall, cdcust, ndmxlt, and spcli.sh.

The command-line arguments have the same name as the parameters in the options file except the prefix cdai\_ is removed. For example, the command-line argument for cdai\_installCmd in the options file is --installCmd and cdai\_cpioFile becomes --cpioFile.

If you specify both an options file and command-line arguments, then the command-line arguments override the corresponding values in the options file.

**Restriction:** Different UNIX and Linux operating systems have different command-line length limitations. The best practice for silent installations is to use an options file to specify your parameters instead of the command line.

To start cdinstall\_a with an options file, use the following syntax:

```
$ cdinstall_a -f <options file>
```

To start cdinstall\_a with command-line arguments, refer the following example:

```
$ cdinstall_a --installCmd upgrade --cpioFile <file name> --installDir <CDU install dir>
```

## Basic installation and configuration

A basic installation includes only the basic installation steps with the required deployment and installation files.

**Important:** Log on as root before you start the `cdinstall_a` script.

## Installing Sterling Connect:Direct for UNIX

Complete the following procedure to perform a basic installation of Sterling Connect:Direct for UNIX:

### Procedure

1. Create the options file to install Sterling Connect:Direct for UNIX.
2. Log in to the target system as root.
3. Make a deployment directory on the target system to stage the installation files.
4. Copy `cdinstall_a`, `cdinstall`, the `cpio` file, keycert file, and the options file to the deployment directory. You can put the `cpio` file on a network file system instead of the deployment directory.
5. Run `cdinstall_a`.
6. Review the log file in the deployment directory (`cdaiLog.txt`).

## Upgrading or applying a fix pack to Sterling Connect:Direct for UNIX

Complete the following procedure to perform a basic upgrade or fix pack application of Sterling Connect:Direct for UNIX:

### Procedure

1. Copy and modify the installation options file for the upgrade.
2. Log in to the target system as root.
3. Copy `cdinstall_a`, `cdinstall`, the `cpio` file, and the options file to the deployment directory. You can copy the `cpio` file to a network file system instead of the deployment directory.
4. Run `cdinstall_a`.
5. Review the log file in the deployment directory (`cdaiLog.txt`).

## Uninstalling Sterling Connect:Direct for UNIX

Complete the following procedure to uninstall Sterling Connect:Direct for UNIX:

### Procedure

1. Copy and modify the installation options file and copy `cdinstall_a` to the deployment directory.
2. Log in to the target system as root.
3. Run `cdinstall_a`.
4. Review the log file in the deployment directory (`cdaiLog.txt`).
5. If `cdinstall_a` fails:
  - a. Stop Sterling Connect:Direct with the command-line interface (or issue `kill -9 <cdpmgr pid>`).
  - b. Under the root ID, issue `rm -rf <Sterling Connect:Direct install directory>`.
6. Remove the deployment directory and contents.

## Complete installation and configuration

The complete, script-only installation and configuration include the basic installation steps. Optionally, you can add any combination of more keycerts, Sterling Connect:Direct configuration files, the Sterling Connect:Direct Secure Plus configuration command file, and Xlate tables.

After installation, you can use Sterling Control Center to do more configuration of your Sterling Connect:Direct nodes. This configuration includes updating netmaps with other newly installed nodes and applying production keycerts to the deployed nodes.

## Installing Sterling Connect:Direct for UNIX with optional files

Complete the following procedure for a complete, script-only installation of Sterling Connect:Direct for UNIX:

### Procedure

1. Create the options file to install Sterling Connect:Direct.
2. Create one or more of the following optional files:
  - More keycert files
  - Sterling Connect:Direct `initparm.cfg`, `netmap.cfg`, or `userfile.cfg` files. You can use one or more of these files.

**Note:** If the silent installation options file includes port numbers different from the port numbers that are specified in the optional `.cfg` files, the silent installation overrides the options file parameters and uses the parameters from the optional `.cfg` files.

- Sterling Connect:Direct Secure Plus configuration command file
  - Xlate tables
3. Log in to the target server.
  4. Create a deployment directory.
  5. Copy the `cdinstall_a`, `cdinstall`, keycert file, `cpio` file, options file, and other files to the deployment directory. You can put the `cpio` file on a network file system instead of the deployment directory.
  6. Run `cdinstall_a`.
  7. Review the log file in the deployment directory (`cdaiLog.txt`).

## Upgrading or applying a fix pack to Sterling Connect:Direct for UNIX with optional files

Complete the following procedure to perform a complete, script-only upgrade, or fix pack application of Sterling Connect:Direct for UNIX:

### Procedure

1. Copy and modify the installation options file.
2. Log in to the target server as root.
3. Copy `cdinstall_a`, `cdinstall`, the `cpio` file, and the options file to the deployment directory. You can copy the `cpio` file to a network file system instead of the deployment directory.
4. Run `cdinstall_a`.
5. Review the log file in the deployment directory (`cdaiLog.txt`).

## Configuring and monitoring Sterling Connect:Direct for UNIX with Sterling Control Center

After you deploy Sterling Connect:Direct for UNIX by any of the previous methods, use Sterling Control Center to quickly complete more configuration and to monitor the new Sterling Connect:Direct nodes. Sterling Control Center provides full functionality for configuring, monitoring, and analyzing your Sterling Connect:Direct servers.

### About this task

Complete the following procedure to configure and monitor Sterling Connect:Direct nodes with Sterling Control Center.

### Procedure

1. Configure secure connections from Sterling Control Center to the new Sterling Connect:Direct nodes with unique keycerts for each node. For more information, see the *IBM Sterling Control Center System Administration Guide*.
2. Perform post-deployment configuration on these nodes.
  - Add new Sterling Connect:Direct nodes to the netmaps of the existing nodes.
  - Add Sterling Connect:Direct nodes to the netmaps of new nodes.
  - Update the functional authorities on each node.
  - Update the user proxies on each node.

For more information, see the *IBM Sterling Control Center Configuration Management Guide*.

---

## Sterling Connect:Direct for Microsoft Windows silent installation

The installation file for a silent installation of Sterling Connect:Direct for Microsoft Windows is an executable (.exe).

On the command line for the installation executable, you can specify parameters, such as the parameters in the following list:

- Database password
- keycert passphrase
- Sterling Connect:Direct server port
- Sterling Connect:Direct client port
- Sterling Connect:Direct administrator user ID

For more information about the installation executable, see “Installation executable silent operation” on page 21.

The Sterling Connect:Direct server supports the use of an INI file, which can specify the value of installation properties. If you plan to use the `cd_srvr.ini` file to manage a silent installation, change the parameters of the INI file that is provided with Sterling Connect:Direct for Microsoft Windows to specify site-specific information.

You can use the Sterling Connect:Direct for Microsoft Windows Configuration Utility (`CdConfig.exe`) to extract and validate configuration information from an existing master node.

- To extract netmap configuration, run the following command:

```
CDConfig.exe /q /mC:\Configurations\MyNetmap.cfg
```

- To extract user configuration, run the following command:

```
CDConfig.exe /q /uC:\Configurations\MyUserAuth.cfg
```

- To extract initialization parameters, run the following command:

```
CDConfig.exe /q /pC:\Configurations\MyInitparms.cfg
```

**Attention:** If a parameter is defined in both the `cd_srvr.ini` file and on the command line, the parameter in the `cd_srvr.ini` file overrides the command-line parameter.

**Important:** Some parameters must be defined at the command line, such as `ADDLOCAL`, `REMOVE`, and `INSTALLDIR`.

Refer to “Sterling Connect:Direct for Microsoft Windows deployment options” for more information about installation parameters that can be specified in the `cd_srvr.ini` file or on the command line. This is important when you do not use Sterling Control Center for configuration tasks or an enterprise deployment tool.

After installation, you can use Sterling Control Center to complete the configuration of your Sterling Connect:Direct nodes.

## Sterling Connect:Direct for Microsoft Windows deployment options

The following table describes the installation parameters that can be specified in the `cd_srvr.ini` file or on the command line.

**Restriction:** Values in the `cd_srvr.ini` file are case-sensitive. Use the appropriate case when you edit the file.

**Attention:** Parameters that are specified on the command line do not override parameters in `cd_srvr.ini`. Parameters in `cd_srvr.ini` override parameters that are specified on the command line. It is a safe practice to specify parameters either in `cd_srvr.ini` or the command line but not both.

Parameter name	Default value	Description
CD_SETUP_TYPE	Default	Specify Default to perform a new installation. Specify Upgrade to upgrade releases.
CD_NODENAME	First 16 characters of server name.	The name to assign to the Sterling Connect:Direct node that is installed. Limited to 16 characters and converted to uppercase.
CD_UPGRADE_NODE	First node of most recent version installed.	Applies only if <code>CD_SETUP_TYPE=Upgrade</code> is specified. Example: <code>CD_UPGRADE_NODE=V3.3.02\MyNode</code>
CD_UPGRADE_KEEPSRC_FLAG	Uninstall previous version.	Whether to keep the previous version or not during an upgrade.
CD_HOST_IP	First IP address found on the server.	Listening IP address to accept incoming Sterling Connect:Direct server connections. <code>0.0.0.0</code> means listen on all interfaces.



Parameter name	Default value	Description
CD_HOST_PORT	1364	Listening port to accept incoming Sterling Connect:Direct server connections.
CD_API_IP	First IP address found on the server.	Listening IP address to accept incoming Sterling Connect:Direct client connections. 0.0.0.0 means listen on all interfaces.
CD_API_PORT	1363	Listening port to accept incoming Sterling Connect:Direct client connections.
CD_SNA_FLAG	Disabled	Specify 1 to enable SNA support.
CD_SNA_LUNAME	If already installed, previous LU name. Otherwise, first 8 characters of server name.	Translated to uppercase. Ignored if <b>CD_SNA_FLAG</b> is not set.
CD_SNA_NETID	None	Any valid string. Translated to uppercase. Ignored if <b>CD_SNA_FLAG</b> is not set.
CD_SNA_MODE	NDM624K	Any valid string. Translated to uppercase. Ignored if <b>CD_SNA_FLAG</b> is not set.
CD_SNMP_FLAG	Disabled	1 enables SNMP trap agent.
CD_EVENTLOG_FLAG	Disabled.	1 enables Sterling Connect:Direct event logging.
CD_ACTIVEDIR_FLAG	Disabled	1 registers the client IP address to Active Directory.
CD_NOTIFY_TYPE	NT BROADCAST	NT BROADCAST or SMTP. Specifies type of process completion notification.
CD_NOTIFY_SMTP_HOST	None.	SMTP server host name or IP address.
CD_NOTIFY_SMTP_PORT	25	SMTP server port.
CD_NOTIFY_SMTP_SENDER	None.	
CD_NOTIFY_SMTP_AUTHENTICATE	Disabled	1 = enable.
CD_NOTIFY_SMTP_USERID	None.	SMTP user ID.
CD_NOTIFY_SMTP_PWD	None.	SMTP password.
CD_USERAUTH_FILE	None.	Path to user auth file to import. You can use the Sterling Connect:Direct for Microsoft Windows Configuration Utility to extract the configuration from an existing node.
CD_NETMAP_FILE	None.	Path to netmap to import. You can use the Sterling Connect:Direct for Microsoft Windows Configuration Utility to extract the configuration from an existing node.

Parameter name	Default value	Description
CD_INITPARMS_FILE	None.	Path to initparms to import. You can use the Sterling Connect:Direct for Microsoft Windows Configuration Utility to extract the configuration from an existing node.
CD_DATABASE_TYPE	SOLIDDB	Use for TCQ and Statistics databases. Can specify MSSQL or MYSQL also.
CD_SOLIDDB_PORT	23460	Listening port.
CD_SOLIDDB_USERID	root	User ID for database.
CD_SOLIDDB_PWD	None.	Password.
CD_SQL_SERVER	None	Host name or IP address of DB server.
CD_SQL_AUTHENTICATION	Disabled.	1 = enable.
CD_SQL_USERID	None.	User ID for DB.
CD_SQL_PWD	None.	Password for DB.
CD_MYSQL_HOST	LocalHost	Host name or IP address of DB server.
CD_MYSQL_PORT	1366	Listening port of DB server.
CD_MYSQL_USERID	root	User ID for DB.
CD_MYSQL_PWD	None.	Optional.
CD_SVC_ACCOUNT	None.	Name of service account, which is specified in DomainName\UserName format, to log in with.
CD_SVC_ACCOUNT_PWD	None.	Password for login service account.
CD_NETMAP_CHECK	Y	Scope of netmap checking. Y, L, R, N.
CD_NODE_CHECK	B	Method of Sterling Connect:Direct node checking. A, B, C.
CD_KEYSTORE_FILE=	cdkeystore.kdb	Specifies the file name for Secure+ KeyStore file. The file name should not include a path and will be created in the Secure+ certificates directory.
CD_KEYSTORE_PWD=password	None.	Specifies the password for Secure+ KeyStore file, which is required when Secure+ is installed.
CD_CLIENT_CIPHERSUITES	(TLS_RSA_WITH_AES_256_CBC_SHA, TLS_RSA_WITH_AES_128_CBC_SHA)	List of cipher suites to enable.
CD_ADMIN_USERID	ID of user performing install.	Specify different value if you are installing under system account.

The following `cd_svr.ini` file includes sample values for each parameter:

**Restriction:** Values in the `cd_svr.ini` file are case-sensitive. Use the appropriate case when you edit the file.

```
[Server]
CD_SETUP_TYPE=default
CD_NODENAME=CD.WINDOWS
CD_HOST_IP=0.0.0.0
```

```

CD_HOST_PORT=1364
CD_API_IP=0.0.0.0
CD_API_PORT=1363
CD_EVENTLOG_FLAG=1
CD_NOTIFY_TYPE=NT BROADCAST
CD_USERAUTH_FILE=C:\Configurations\MyUserAuth.cfg
CD_NETMAP_FILE=C:\Configurations\MyNetmap.cfg
CD_INITPARMS_FILE=C:\Configurations\MyInitparms.cfg
CD_SOLIDDB_PORT=23460
CD_SOLIDDB_USERID=root
CD_SOLIDDB_PWD=solidpasswd
CD_SVC_ACCOUNT=. \cdsvuser
CD_SVC_ACCOUNT_PWD=syspasswd
CD_NETMAP_CHECK=Y
CD_CLIENT_KEYCERT_FILE=c:\certs\clientKeycert.pem
CD_CLIENT_KEYCERT_PWD=password
CD_CLIENT_CIPHERSUITES=(TLS_RSA_WITH_AES_256_CBC_SHA,
                        TLS_RSA_WITH_AES_128_CBC_SHA)
CD_ADMIN_USERID=cdadmin

```

## Installation executable silent operation

There are four types of operations: Install, upgrade, apply fix pack, and uninstall.

The following example illustrates how to use the installation executable file for a new installation:

```

4.6.0.3-SterlingConnectDirectforMicrosoftWindows-x86-fp0003.exe
/v"ADDLOCAL=ALL REMOVE=Symbols CD_SRVR_INI_FILE="C:\My Files\
cd_srvr.ini\" /qn /lv* C:\cdinstall.log" /s

```

**Tip:** You can specify the CD\_SOLIDDB\_PWD in the cd\_srvr.ini file.

The following example illustrates how to use the installation executable for an upgrade installation (CD\_SETUP\_TYPE=Upgrade):

```

4.6.0.3-SterlingConnectDirectforMicrosoftWindows-x86-fp0003.exe
/v"ADDLOCAL=ALL REMOVE=Symbols CD_SRVR_INI_FILE="C:\My Files\
cd_srvr.ini\" /qn /lv* C:\cdinstall.log" /s

```

**Tip:** You can specify the CD\_SOLIDDB\_PWD and CD\_SETUP\_TYPE in the cd\_srvr.ini file.

The following example illustrates how to use the installation executable for a fix pack installation (SEPATCH\_ONLY\_FLAG=1):

```

4.6.0.3-SterlingConnectDirectforMicrosoftWindows-x86-fp0003.exe
/v"SEPATCH_ONLY_FLAG=1 /qn /lv* C:\cdinstall.log" /s

```

The following example illustrates how to use the installation executable to uninstall (/x) Sterling Connect:Direct for Microsoft Windows.

**Important:** The uninstall works only with the same version of the installer executable as the instance that is being uninstalled.

```

4.6.0.3-SterlingConnectDirectforMicrosoftWindows-x86-fp0003.exe /v"/qn /lv*
C:\cdinstall.log" /s /x

```

## Installing Sterling Connect:Direct for Microsoft Windows

Complete the following procedure to perform a basic installation of Sterling Connect:Direct for Microsoft Windows:

## Procedure

1. If needed, edit the `cd_srvr.ini` file with a text editor.
2. Log in to the target server as a Microsoft Windows administrator.
3. Create a deployment directory on the target system to stage the installation files.
4. Copy the installation executable file, keycert file, and `cd_srvr.ini` file (if needed) to the deployment directory. You can optionally put the installation executable file on a network share.
5. For Sterling Connect:Direct for Microsoft Windows version 4.6.0.2 or later, run the installation executable with the following syntax:

```
<Installation executable name> /v"ADDLOCAL=ALL REMOVE=SNMP,Symbols  
CD_SRVR_INI_FILE=\"C:\My Files\cd_srvr.ini\" CD_SOLIDDB_PWD=<password>  
/qn /l*v C:\Windows\temp\cdinstall.log\" /w /s
```

**Restriction:** If you want to use the `cd_srvr.ini` file, add it to the command.

6. Review the log file (`C:\Windows\temp\cdinstall.log`).

## Upgrading Sterling Connect:Direct for Microsoft Windows

Complete the following procedure to perform a basic upgrade of Sterling Connect:Direct for Microsoft Windows:

### Procedure

1. If needed, copy the `cd_srvr.ini` file for the upgrade.
2. Log in to the target server.
3. Copy the installation executable file and `cd_srvr.ini` file (if needed) to the deployment directory. You can optionally put the installation executable file on a network share.
4. For Sterling Connect:Direct for Microsoft Windows version 4.6, run the installation executable with the following syntax:

```
<Installation executable name> /v"ADDLOCAL=ALL REMOVE=SNMP,Symbols CD_SETUP_TYPE=Upgrade  
CD_SRVR_INI_FILE=\"C:\My Files\cd_srvr.ini\" CD_SOLIDDB_PWD=<password> /qn /l*v  
C:\Windows\temp\cdinstall.log\" /w /s
```

**Restriction:** If you want to use the `cd_srvr.ini` file, add it to the command.

5. Review the log file (`C:\Windows\temp\cdinstall.log`).

## Applying a fix pack to Sterling Connect:Direct for Microsoft Windows

Complete the following procedure to apply a fix pack application of Sterling Connect:Direct for Microsoft Windows:

### Procedure

1. Log in to the target server.
2. Copy the fix pack executable to the deployment directory. You can optionally make the fix pack executable file available on a network share.
3. For Sterling Connect:Direct for Microsoft Windows version 4.6, run the fix pack executable with the following syntax:

```
<Fix pack executable name> /v"SEPATCH_ONLY_FLAG=1 /qn /l*v  
C:\Windows\temp\cdinstall.log\" /w /s
```

4. Review the log file (`C:\Windows\temp\cdinstall.log`).

## Uninstalling Sterling Connect:Direct for Microsoft Windows

Complete the following procedure to uninstall Sterling Connect:Direct for Microsoft Windows:

### Procedure

1. Copy the installation executable file to the deployment directory or a network share.
2. Log in to the target system.
3. For Sterling Connect:Direct for Microsoft Windows version 4.6, run the installation executable file with the following syntax:  

```
<Installation executable name> /v"/qn /lv* C:\cduninstall.log" /s /x
```
4. Review the log file.
5. Remove the deployment directory and contents.

## Configuring and monitoring Sterling Connect:Direct for Microsoft Windows with Sterling Control Center

After you deploy Sterling Connect:Direct for Microsoft Windows by any of the previous methods, use Sterling Control Center to quickly complete configuration and to monitor the new Sterling Connect:Direct nodes. Sterling Control Center provides full functionality for configuring, monitoring, and analyzing your Sterling Connect:Direct servers.

### About this task

Complete the following procedure to configure and monitor Sterling Connect:Direct nodes with Sterling Control Center.

### Procedure

1. Configure secure connections from Sterling Control Center to the new Sterling Connect:Direct nodes. For more information, see *IBM Sterling Control Center System Administration Guide*.
2. Perform post-deployment configuration on these nodes.
  - Add new Sterling Connect:Direct nodes to the netmaps of the existing nodes.
  - Add Sterling Connect:Direct nodes to the netmaps of new nodes.
  - Update the functional authorities on each node.
  - Update the user proxies on each node.

For more information, see *IBM Sterling Control Center Configuration Management Guide*.



---

## Chapter 5. Tivoli Endpoint Manager overview

You can use IBM Tivoli Endpoint Manager (TEM) to deploy Sterling Connect:Direct across computers in your enterprise. You can also use TEM to upgrade and uninstall Sterling Connect:Direct.

### Requirements

If you want to use TEM to deploy, upgrade, and uninstall Sterling Connect:Direct, you must install the following software:

- IBM Tivoli Endpoint Manager Server and Console, version 9.0 or later.
- IBM Tivoli Endpoint Manager agent, version 9.0 or later, must be installed on every computer on which you want to install, upgrade, or uninstall Sterling Connect:Direct.
- CreateTEMTasks utility

---

### Getting Started with the CreateTEMTasks utility

The CreateTEMTasks utility (CTTU) creates TEM tasks that are used by a TEM console operator to deploy, upgrade, and uninstall Sterling Connect:Direct for UNIX and Sterling Connect:Direct for Microsoft Windows across the enterprise. The CTTU also provides a TEM task to start the Sterling Connect:Direct for Microsoft Windows service.

#### Before you begin

The CTTU is a Java based application and requires Java Runtime Environment (JRE), version 1.6 or later.

#### About this task

The CTTU must use a secure connection to the TEM server. Before you can run the CTTU, you must add the TEM server public certificate to the JKS truststore used by the CTTU. You can add the certificate by using the following procedure on Microsoft Windows:

#### Procedure

1. Make a copy of the cacerts truststore file for the JRE. The truststore file is usually in the *<install directory>/jre/lib/security* directory of your JRE.
2. Put your copy of the cacerts truststore file in a directory that contains no other files.
3. Download a copy of the TEM server public certificate. If you use a Firefox browser, use the following procedure:
  - a. Type the URL of the TEM server in the following format: `https://<TEM server address>:<TEM port>`. A "This Connection is Untrusted" message is displayed.

**Attention:** 52311 is the default port the TEM server listens on for connections. If your TEM server is configured to listen on a different port, use that value.
  - b. Click **Add Exception....** The "Add Security Exception" window opens.

- c. Click **View...**
- d. Click the **Details** tab.
- e. Click **Export...**
- f. Save the certificate.

**Tip:** Alternately, you can use OpenSSL to obtain a copy of the TEM server public certificate. Issue the command: `s_client -showcerts -connect <server>:52311`, where `<server>` must be replaced with the TEM server address. Copy the certificate from the console.

4. Open a Command Prompt.
5. Use the Java keytool utility to add the certificate to your copy of the cacerts file with the following command:
 

```
keytool -import -alias tem -keystore <file pathname to cacerts copy>
-file <file pathname to TEM server public certificate> -trustcacerts
```
6. When prompted, enter the password for the truststore file. The default value is `changeit`.

---

## CTTU data file

The CTTU utilizes two data files:

- A properties file containing connection information for the TEM server. This file usually does not change for different tasks.
- A tasks file containing one line of information, in CSV form, for each TEM task.

---

## CTTU properties file

The CTTU properties file contains the following connection information:

- User ID to access the TEM server (**temUserID**)
- Password to access the TEM server (**temPassword**)
- The TEM server host address (**temHost**)
- The TEM server port (**temPort**)
- The file path name of the truststore that is used by the CTTU (**trustStorePathname**)
- The password for the truststore that is used by the CTTU (**trustStorePassword**)
- The file path name for the data file that contains information for the TEM tasks (**tasksPathName**)

The following sample properties file specifies connection information that is used by the CTTU to connect to a TEM server.

```
temUserID=user1
temPassword=Abc123
temHost=server01.proddomain.com
temPort=52311
trustStorePathname=c:/cacerts
trustStorePassword=changeit
tasksPathname=c:/Users/PROD_ADMIN/Desktop/TEM/data/tasks.txt
```

**Attention:** If any values specified contain a backslash ("`\`"), you must specify two of them or they are used as an escape character.

**Attention:** You can specify a single forward slash as a file separator character, rather than two backslashes, for both UNIX and Microsoft Windows.



---

## CTTU tasks file

The tasks file contains one line of information, in CSV form, for each TEM task you create.

The first two values in each line must contain:

- The name of the TEM task
- The file path name to the TEM task skeleton

Subsequent values for each line depend upon the task or function to accomplish. If you distribute more files as a part of the TEM task, the path names for those files must follow the TEM task skeleton path name.

**Attention:** In the tasks file, blank lines and lines that begin with # are ignored by the CTTU.

## Sterling Connect:Direct for UNIX tasks file

The tasks file can be used to install, upgrade, or uninstall Sterling Connect:Direct for UNIX.

### Installations

For Sterling Connect:Direct for UNIX installations, specify the file path name for the `cpio` file for the third value. For the fourth value, specify the file path name for the key certificate of the installation. Specify the file path names for the `cdinstall_a` and `cdinstall` installation scripts for the fifth and sixth values. You can specify more file path names and, if you specify them, they must correspond to one of the default values for the optional installation files. For example, if you specify one or more additional file path names, use one of the following file names:

- `initparm.cfg`
- `netmap.cfg`
- `userfile.cfg`

**Note:** The options file is not needed with TEM deployment. The CTTU creates an options file during the installation.

Table 1. TEM tasks file parameters and sample values for Sterling Connect:Direct for UNIX installations

Position	Parameter	Sample values
1	Name of TEM task	Install CDU AIX test 3-18
2	File path name to the TEM task skeleton ( <code>cdunix-install.bes</code> )	<code>C:\Users\IBM_ADMIN\Desktop\TEM\CTTU\cdunix-install.bes</code>
3	File path name for the <code>cpio</code> file	<code>C:\Users\IBM_ADMIN\Desktop\TEM\cdu4101\IBM\cdunix</code>
4	File path name for the key certificate of the installation	<code>C:\Users\IBM_ADMIN\Desktop\TEM\CTTU\iden_keycert.pem</code>
5	File path name for the <code>cdinstall_a</code> installation script	<code>C:\Users\IBM_ADMIN\Desktop\TEM\cdu4101\IBM\cdinstall_a</code>
6	File path name for the <code>cdinstall</code> installation script	<code>C:\Users\IBM_ADMIN\Desktop\TEM\cdu4101\IBM\cdinstall</code>
7 - n	File path name for an optional installation file	<code>C:\Users\IBM_ADMIN\Desktop\TEM\cdu4101\IBM\netmap.cfg</code>

## Upgrades

For Sterling Connect:Direct for UNIX upgrades, specify the file path name of the cpio file for the third value. Do not specify a value for the fourth value because key certificates are not used during the upgrade process. Specify the file path names for the cdinstall\_a and cdinstall installation scripts for the fifth and sixth values. Do not specify more file path names.

Table 2. TEM tasks file parameters and sample values for Sterling Connect:Direct for UNIX upgrades

Position	Parameter	Sample values
1	Name of TEM task	Upgrade CDU AIX test 3-18
2	File path name to the TEM task skeleton (cdunix-upgrade.bes)	C:\Users\IBM_ADMIN\Desktop\TEM\CTTU\cdunix-upgrade.bes
3	File path name for the cpio file	C:\Users\IBM_ADMIN\Desktop\TEM\cdu4101\IBM\cdunix
4	Leave the value for this parameter empty (a comma indicates an empty value)	
5	File path name for the cdinstall_a installation script	C:\Users\IBM_ADMIN\Desktop\TEM\cdu4101\IBM\cdinstall_a
6	File path name for the cdinstall installation script	C:\Users\IBM_ADMIN\Desktop\TEM\cdu4101\IBM\cdinstall

## Uninstalls

Do not specify values for the third and fourth values for Sterling Connect:Direct for UNIX uninstalls. Specify the file path name for cdinstall\_a for the fifth value. Do not specify more file path names.

Table 3. TEM tasks file parameters and sample values for Sterling Connect:Direct for UNIX uninstalls

Position	Parameter	Sample values
1	Name of TEM task	Uninstall CDU AIX test 3-18
2	File path name to the TEM task skeleton (cdunix-uninstall.bes)	C:\Users\IBM_ADMIN\Desktop\TEM\CTTU\cdunix-uninstall.bes
3	Leave the value for this parameter empty (a comma indicates an empty value)	
4	Leave the value for this parameter empty (a comma indicates an empty value)	
5	File path name for the cdinstall_a installation script	C:\Users\IBM_ADMIN\Desktop\TEM\cdu4101\IBM\cdinstall_a

## Sterling Connect:Direct for Microsoft Windows tasks file

The tasks file can be used to install, upgrade, apply a fix pack, or uninstall Sterling Connect:Direct for Microsoft Windows, or start the Sterling Connect:Direct for Microsoft Windows service.

### Installations

For Sterling Connect:Direct for Microsoft Windows installations, specify the file path name for the installation executable for the third value. For the fourth value,

specify the file path name for the key certificate file of the installation. You might, optionally, specify file path names for the following configuration files as additional values:

- Initparms.cfg
- Map.cfg
- User.cfg

*Table 4. TEM tasks file parameters and sample values for Sterling Connect:Direct for Microsoft Windows installations*

Position	Parameter	Sample values
1	Name of TEM task	Install CDW test 3-18
2	File path name to the TEM task skeleton (cdwindows-install.bes)	C:\Users\IBM_ADMIN\Desktop\TEM\CTTU\cdwindows-install.bes
3	File path name for the installation executable	C:\Users\IBM_ADMIN\Desktop\TEM\Windows\4.6.0.3-SterlingConnectDirectforMicrosoftWindows-x86-fp0003.exe
4	File path name for the key certificate of the installation	C:\Users\IBM_ADMIN\Desktop\TEM\CTTU\iden_keycert.pem
5 - 7	File path name for optional configuration files	C:\Users\IBM_ADMIN\Desktop\TEM\CTTU\user.cfg

## Upgrades

For Sterling Connect:Direct for Microsoft Windows upgrades, specify the file path name for the installation executable for the third value. Do not specify additional file path names.

*Table 5. TEM tasks file parameters and sample values for Sterling Connect:Direct for Microsoft Windows upgrades*

Position	Parameter	Sample values
1	Name of TEM task	Upgrade CDW test 3-18
2	File path name to the TEM task skeleton (cdwindows-upgrade.bes)	C:\Users\IBM_ADMIN\Desktop\TEM\CTTU\cdwindows-upgrade.bes
3	File path name for the installation executable	C:\Users\IBM_ADMIN\Desktop\TEM\Windows\4.6.0.3-SterlingConnectDirectforMicrosoftWindows-x86-fp0003.exe

## Fix packs

For Sterling Connect:Direct for Microsoft Windows fix pack applications, specify the file path name for the installation executable for the third value. Do not specify additional file path names.

*Table 6. TEM tasks file parameters and sample values for Sterling Connect:Direct for Microsoft Windows fix packs*

Position	Parameter	Sample values
1	Name of TEM task	Fixpack CDW test 3-18
2	File path name to the TEM task skeleton (cdwindows-fixpack_application.bes)	C:\Users\IBM_ADMIN\Desktop\TEM\CTTU\cdwindows-fixpack_application.bes
3	File path name for the installation executable	C:\Users\IBM_ADMIN\Desktop\TEM\Windows\4.6.0.3-SterlingConnectDirectforMicrosoftWindows-x86-fp0003.exe

## Uninstalls

For Sterling Connect:Direct for Microsoft Windows uninstalls, do not specify any additional values.

Table 7. TEM tasks file parameters and sample values for Sterling Connect:Direct for Microsoft Windows uninstalls

Position	Parameter	Sample values
1	Name of TEM task	Uninstall CDW test 3-18
2	File path name to the TEM task skeleton (cdwindows-uninstall.bes)	C:\Users\IBM_ADMIN\Desktop\TEM\CTTU\cdwindows-uninstall.bes

## Start Sterling Connect:Direct for Microsoft Windows service

To start Sterling Connect:Direct for Microsoft Windows service, do not specify any additional values.

Table 8. TEM tasks file parameters and sample values to start Sterling Connect:Direct for Microsoft Windows service

Position	Parameter	Sample values
1	Name of TEM task	Start CDW test 3-18
2	File path name to the TEM task skeleton (cdwindows-start.bes)	C:\Users\IBM_ADMIN\Desktop\TEM\CTTU\cdwindows-start.bes

---

## Sample tasks file

The following sample data file contains six lines: one for each task.

```
Install CDU AIX test 3-18,C:\Users\IBM_ADMIN\Desktop\TEM\CTTU\cdunix-install.bes,
C:\Users\IBM_ADMIN\Desktop\TEM\cdu4101\IBM\cdunix,C:\Users\IBM_ADMIN\Desktop\TEM\
CTTU\iden_keycert.pem,C:\Users\IBM_ADMIN\Desktop\TEM\cdu4101\IBM\cdinstall_a,C:\U
sers\IBM_ADMIN\Desktop\TEM\cdu4101\IBM\cdinstall
```

```
Upgrade CDU AIX test 3-18,C:\Users\IBM_ADMIN\Desktop\TEM\CTTU\cdunix-upgrade.bes,
C:\Users\IBM_ADMIN\Desktop\TEM\cdu4101\IBM\cdunix,,C:\Users\IBM_ADMIN\Desktop\TEM
\cdu4101\IBM\cdinstall_a,C:\Users\IBM_ADMIN\Desktop\TEM\cdu4101\IBM\cdinstall
```

```
Uninstall CDU AIX test 3-18,C:\Users\IBM_ADMIN\Desktop\TEM\CTTU\cdunix-uninstall.
bes,,,C:\Users\IBM_ADMIN\Desktop\TEM\cdu4101\IBM\cdinstall_a
```

```
Install CDW test 3-18,C:\Users\IBM_ADMIN\Desktop\TEM\CTTU\cdwindows-install.bes,C
:\Users\IBM_ADMIN\Desktop\TEM\Windows\CDWindows.4602.20130226-1853.exe,C:\Users\I
BM_ADMIN\Desktop\TEM\CTTU\iden_keycert.pem
```

```
Upgrade CDW test 3-18,C:\Users\IBM_ADMIN\Desktop\TEM\CTTU\cdwindows-upgrade.bes,C
:\Users\IBM_ADMIN\Desktop\TEM\Windows\CDWindows.4602.20130226-1853.exe
```

```
Uninstall CDW test 3-18,C:\Users\IBM_ADMIN\Desktop\TEM\CTTU\cdwindows-
uninstall.bes
```

---

## Running the CTTU

Use this information to create TEM tasks by running the CTTU.

### Before you begin

When the CTTU distribution file is unarchived, the directory that is created for the CTTU contains all required .jar files, configuration files, and the runCTTU.bat or

runCTTU.sh file. If needed, edit the runCTTU.bat file or runCTTU.sh file, and update the value for **propertiesPathname** to the file path name of your TEMTask properties file. The runCTTU.bat file contains the following command and parameters:

```
java -DpropertiesPathname="TEMTask.properties" -Dlog4j.configuration=file:conf\CTTU.log4j -classpath lib\log4j-1.2.16.jar;lib\componentCommon.jar;lib\xalan.jar;lib\commons-httpclient-3.1.jar;lib\jdom.jar;lib\com.ibm.ws.org.apache.commons.codec.1.4_1.0.0.jar;lib\commons-logging.jar;lib\SCCenter.jar;. com.sterlingcommerce.scc.tem.CreateTEMTasks
```

## About this task

To run the CTTU, use the following procedure:

### Procedure

1. Open a Command Prompt
2. Go to the directory where the runCTTU.bat or runCTTU.sh file is located
3. Type runCTTU (Microsoft Windows) or runCTTU.sh (UNIX/Linux) and press **Enter**

### Results

As the CTTU creates each TEM task, it writes the task ID value to the console.

The following output is an example of what is written to the console:

```
C:\CTTU>java -DpropertiesPathname="TEMTask.properties" -Dlog4j.configuration=file:conf\CTTU.log4j -classpath lib\log4j-1.2.16.jar;lib\componentCommon.jar;lib\xalan.jar;lib\commons-httpclient-3.1.jar;lib\jdom.jar;lib\com.ibm.ws.org.apache.commons.codec.1.4_1.0.0.jar;lib\commons-logging.jar;lib\SCCenter.jar;. com.sterlingcommerce.scc.tem.CreateTEMTasks
Tue Apr 16 10:22:57 CDT 2013 Create TEM Tasks Utility beginning...
Tue Apr 16 10:22:58 CDT 2013 Adding files for Task ~Install CDW test 1
Tue Apr 16 10:22:58 CDT 2013 Initiating upload of the following file to TEM: C:\CDWin4603\CDWindows\CDWindows.4602.20130327-0943.exe
Tue Apr 16 10:23:51 CDT 2013 File uploaded successfully.
Tue Apr 16 10:23:51 CDT 2013 Initiating upload of the following file to TEM: C:\CDWin4603\CDWindows\user1_1024_fips_keycert.txt
Tue Apr 16 10:23:51 CDT 2013 File uploaded successfully.
Tue Apr 16 10:23:51 CDT 2013 Adding Task ~Install CDW test 1 to TEM server...
Tue Apr 16 10:23:52 CDT 2013 Task added successfully - id = 90
```

---

## Running the TEM tasks

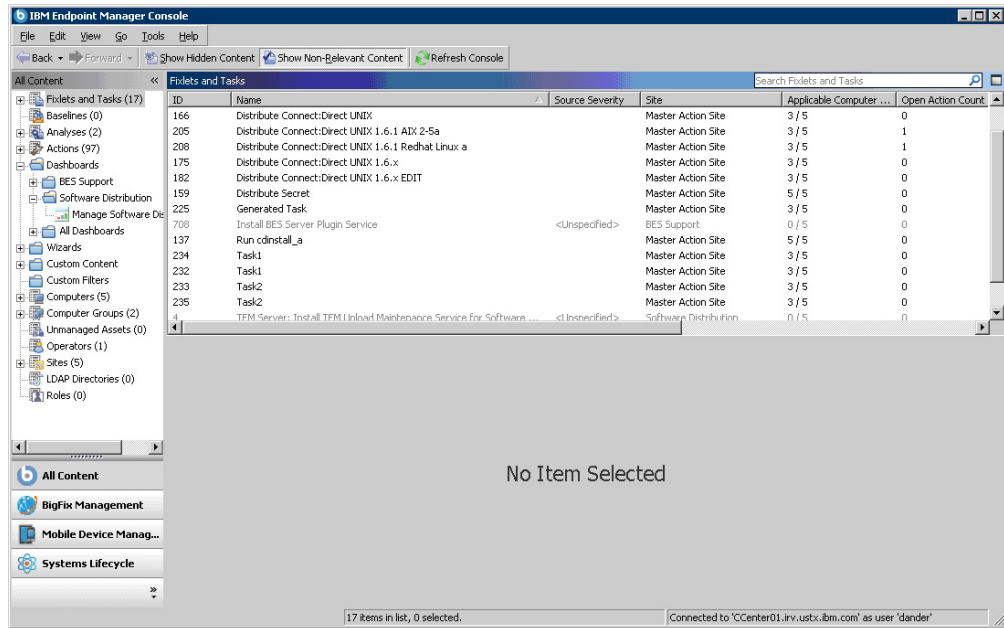
After the CTTU creates the TEM tasks, use the TEM console to run the TEM tasks. These tasks can install, upgrade, apply a fix pack, or uninstall Sterling Connect:Direct, or start the Sterling Connect:Direct service on systems that contain the TEM client.

### About this task

Use the following procedure to run the TEM tasks:

### Procedure

1. Start the TEM console.



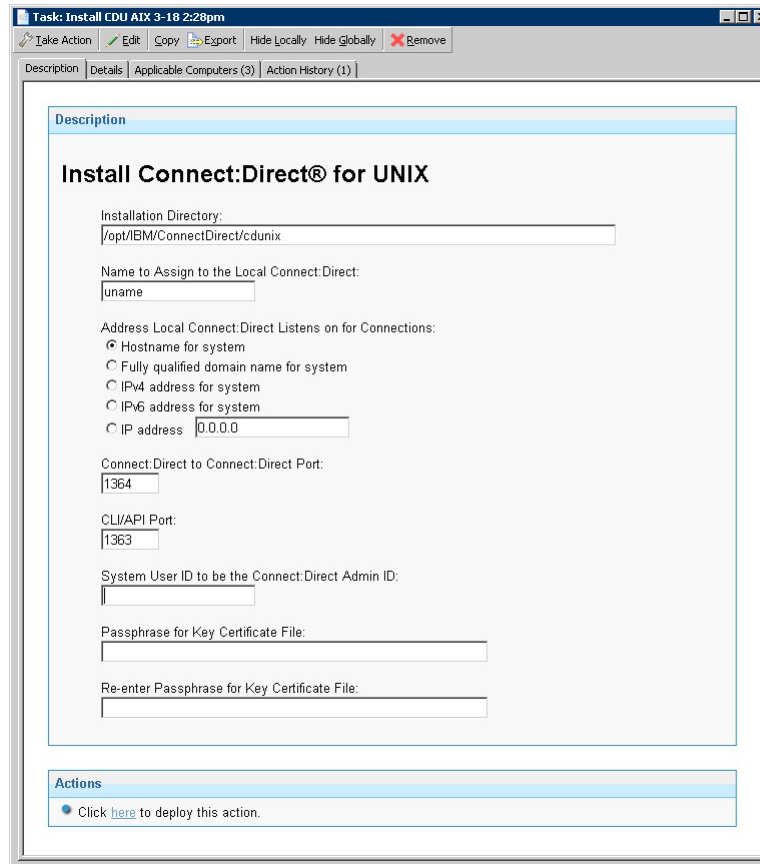
2. Click the **All Content** domain button that is located beneath the **Domain Panel**.
3. Select **Fixlets and Tasks** in the **Domain Panel**. The **List Panel** displays a list of relevant fixlets and tasks. This is where tasks created by the CTTU appear.
 

**Attention:** Tasks that are created by the CTTU are added to the **Master Action Site**.

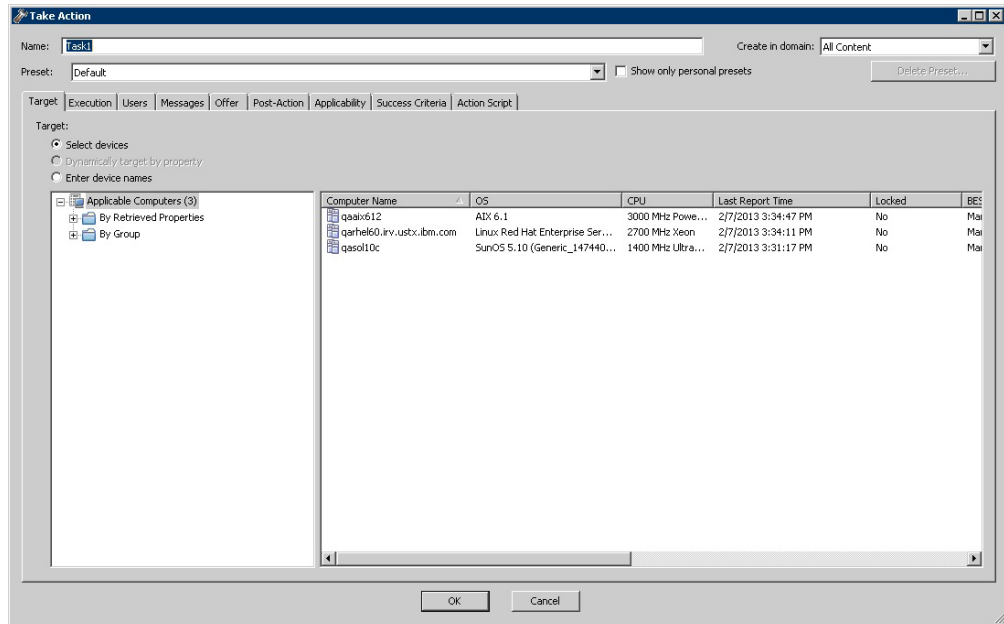
**Attention:** If you do not select **Show Non-Relevant Content**, the tasks that are created by the CTTU do not appear in the list until they are determined relevant for one or more of the computers that are managed by TEM. There might be a delay before tasks are determined relevant for all systems.

**Attention:** You might see multiple tasks that are created with the same name. You can add the ID column to the display and sort the tasks by ID to find specific tasks.
4. Select a specific task. A **Task** window displays.
 

**Attention:** The task that is displayed in the **Task** window depends on the selected task. In the following figure, the user selected the TEM task to perform Sterling Connect:Direct for UNIX installations.



5. On the **Description** tab, enter the appropriate values for your task. For example, to install Sterling Connect:Direct for UNIX, enter the following values:
  - **Installation Directory:** the directory where you want to install Sterling Connect:Direct
  - **Name to Assign to the Local Connect:Direct:** The name can include up to 16 characters. If you specify `uname`, the host name of the server where Sterling Connect:Direct is installed is used for the name.
  - **Address Local Connect:Direct Listens on for Connections:** Select one of the following options to determine the address the local Sterling Connect:Direct listens on:
    - **Hostname for system**
    - **Fully qualified domain name for system**
    - **IPv4 address for system**
    - **IPv6 address for system**
    - Specify **IP address** for system
  - **Connect:Direct to Connect:Direct Port:** port that is used for Sterling Connect:Direct to Sterling Connect:Direct communications.
  - **CLI/API Port:** port that is used for client connections.
  - **System User ID to be the Connect:Direct Admin ID:** the system User ID that is used for the Sterling Connect:Direct administration ID.
  - **Passphrase for Key Certificate File:**
6. Click [here](#) to deploy the task. The **Take Action** window displays.



Initially, the **Take Action** window displays all relevant computers. In the previous figure, the task makes all UNIX and Linux computers with a compatible TEM client relevant.

7. Select the computers for this task.

**Attention:** If the task is a UNIX installation, you must select the computers from the list that are compatible with the CPIO file associated with the task. The task relevance ensures only that UNIX and Linux servers are relevant. It does not ensure that only systems appropriate for the CPIO file to be deployed are relevant.

8. You can select any other execution options in other tabs, such as when to schedule the action on the **Execution** tab.
9. Click **OK** to initiate the task.



---

## Chapter 6. Sterling Connect:Direct for UNIX deployment messages

There are two types of messages that are shown in the following tables. The first table contains informational messages. The second table contains error messages in addition to comments about correcting the error.

These messages are written to the log file named `cdaiLog.txt`, in the deployment directory. A file named `exitStatusFile.txt` contains the completion message ID and descriptive text from the `cdinstall_a` installation in addition to other information.

The following table contains `cdinstall_a` informational messages:

Message ID	Message text
CDAI000I	Connect:Direct for UNIX automated installation operation started.
CDAI001I	Connect:Direct automated installation completed.
CDAI010I	Debug message. Actual message text is supplied on logging call.
CDAI011I	Start of display of variables from options file.
CDAI012I	End of display of variables from options file.
CDAI013I	Backup of current installation started.
CDAI014I	Backup of current installation completed.
CDAI015I	Restore of current installation started.
CDAI016I	Restore of current installation completed.
CDAI017I	Connect:Direct successfully uninstalled.
CDAI018I	Performing writable installation.
CDAI019I	Performing upgrade installation.
CDAI020I	Performing uninstall.
CDAI021I	Configuring Secure+.
CDAI022I	Verifying installation.
CDAI023I	Copying deployment directory contents to writable directory.
CDAI024I	Copying deployment directory complete.
CDAI025I	Execution started in writable deployment directory.
CDAI026I	Execution completed in writable deployment directory.
CDAI027I	Copying output files from writable deployment directory.
CDAI028I	Start of log records from writable deployment directory.
CDAI029I	Building xlate tables started.
CDAI030I	Building xlate tables completed.
CDAI031I	Start of display of environment info.
CDAI032I	End of display of environment info.
CDAI033I	<code>cdinstall_a</code> exiting.
CDAI034I	Connect:Direct for UNIX failed to start.
CDAI035I	Extracting admin userid from <code>idInfoFile</code> .

Message ID	Message text
CDAI036I	Extracting local node name from idInfoFile.
CDAI037I	Admin userid determined. Override ignored.
CDAI038I	Local node determined. Override ignored.
CDAI039I	Options File.
CDAI040I	Resolved Variables.
CDAI041I	Variables Used During:
CDAI042I	Copied configuration files. Verifying installation again.

The following table contains cdinstall\_a error messages:

Message ID	Message text	Comments
CDAI000E	usage: cdinstall_a [-f <options file>] [cmd line args]	Check spelling/syntax in options file and/or command-line arguments.
CDAI001E	Connect:Direct automated installation failed.	Check other error messages that describe the specific error.
CDAI002E	Invalid argument found.	Check spelling/syntax in options file and/or command-line arguments.
CDAI003E	Options file parameter not specified.	Required options file or command-line parameter was not specified.
CDAI004E	Options file does not exist.	Check spelling, path, etc.
CDAI005E	Base installation and configuration failed.	Check other error messages that describe the specific error.
CDAI006E	Setting root attributes failed.	Sterling Connect:Direct installation directory might not be on local file system.
CDAI007E	Secure+ configuration failed.	Check Sterling Connect:Direct Secure Plus error messages.
CDAI008E	Must not install under root id.	
CDAI009E	Backup of current installation failed.	Check other error messages that describe the specific error.
CDAI010E	Restore of current installation failed.	Check other error messages that describe the specific error.
CDAI011E	Executable code not allowed as value for variable.	Cannot specify option file parameters that are enclosed in ` characters or for Linux, use the \$(...) expression.  These notations would allow injection of arbitrary UNIX and Linux commands.
CDAI012E	cdinstall_a must run under root id.	Log in under root before you run cdinstall_a.
CDAI013E	Invalid admin userid.	The admin user ID is not a defined user ID.
CDAI014E	Could not copy certificates to Secure+ certificates directory.	Make sure that certificates are readable and the installation directory and Sterling Connect:Direct Secure Plus subdirectories are writable.

Message ID	Message text	Comments
CDAI015E	Upgrade installation and configuration failed.	Check other error messages that describe the specific error.
CDAI016E	No keycert for S+ install.	<code>cdai_localCertFile</code> must be specified.
CDAI017E	Restore of installation directory failed.	Check other error messages that describe the specific error.
CDAI018E	File does not exist or is unreadable.	Make sure that the file in question is available or readable.
CDAI019E	Install directory should not exist for new install.	The admin specified <code>cdai_installCmd="install"</code> but the Sterling Connect:Direct installation directory exists. Change the directory name or change the command to <code>upgrade</code> or <code>uninstall</code> as appropriate.
CDAI020E	Shutdown of Connect:Direct failed.	Check other error messages that describe the specific error.
CDAI021E	Connect:Direct not installed. Cannot uninstall.	Check installation directory spelling.
CDAI022E	Connect:Direct installation verification failed.	Check the <code>cdaiLog.txt</code> file for other errors. View the Sterling Connect:Direct statistics for other clues.
CDAI023E	Error building xlate tables.	Check syntax of Xlate tables in question.
CDAI024E	Copying log/output files to work subdirectory failed.	Verify permissions are correct.
CDAI025E	<code>cdinstall_a</code> exiting with error.	Check other error messages that describe the specific error.
CDAI026E	Deletion of C:D installation directory failed.	Check permissions on directory.
CDAI027E	Invalid parameter in options file or on command line.	Correct the spelling and/or syntax.
CDAI028E	Install cmd specified but C:D already installed.	Change command to <code>upgrade</code> or <code>uninstall</code> if either is the intended action.
CDAI029E	Upgrade cmd specified but C:D is not installed.	Change <code>cdai_installCmd</code> to <code>install</code> and rerun.
CDAI030E	Uninstall cmd specified but C:D is not installed.	Nothing left to do.
CDAI031E	IAcquiring net info failed. ip4 6: link addresses defined?	Correct spelling/syntax errors in <code>cdai_acquireHostnameOrIP</code> parameter value.
CDAI032E	Passphrase missing for keycert.	Specify <code>cdai_localCertPassphrase</code> .
CDAI033E	No cmd line arguments specified.	Specify an options file or the minimum required individual command-line arguments that are needed for the command that is being run.
CDAI034E	Connect:Direct for UNIX failed to start.	Check other log errors. View Sterling Connect:Direct statistics records.
CDAI035E	<code>mkdir</code> failed for directory:	Check spelling.
CDAI036E	Invalid exit code returned. cmd=	Report

Message ID	Message text	Comments
CDAI037E	idInfoFile.txt missing. setting cdadmin to dir owner id.	Can occur if you are upgrading a Sterling Connect:Direct installation that is not originally installed with the automated installation mechanism.
CDAI038E	No cdadmin userid in id file. Trying alternate settings.	Can occur if you are upgrading a Sterling Connect:Direct installation that is not originally installed with the automated installation mechanism.
CDAI039E	No local node name. Trying alternate settings.	Can occur if you are upgrading a Sterling Connect:Direct installation that is not originally installed with the automated installation mechanism.
CDAI040E	No cdamind userid.. Trying alternate settings.	Can occur if you are upgrading a Sterling Connect:Direct installation that is not originally installed with the automated installation mechanism.
CDAI041E	Local node name not specified.	Specify <code>cdai_localNodeName</code> .
CDAI042E	Invalid local node name specified.	Specify <code>cdai_localNodeName</code> correctly.
CDAI043E	Not a valid text file. Trying Win2unix conversion. File:	A possible Microsoft Windows text file was detected (for example, <code>ini tparm.cfg</code> ). Converting to UNIX text format.
CDAI044E	Win2unix text conversion failed. File:	Text file still incorrect after you convert to UNIX text format.
CDAI045E	cdamind userid cannot read/write into install directory.	User ID cdadmin not allowed to create/write into Sterling Connect:Direct installation directory. Choose a different directory for installation.
CDAI046E	No usable IPv6 address configured.	IPv6 addressing was selected but the system has no IPv6 addresses configured. Try IPv4 addresses instead.
CDAI047E	Upgrade installation and configuration of Secure+ failed.	Check the <code>cdaiLog.txt</code> log file for more information.
CDAI048E	Invalid characters found in local node name.	Specify a Sterling Connect:Direct node name with correct characters.
CDAI049E	C:D config file copy to <code>cfg/&lt;nodename&gt;</code> directory failed.	Check permissions on the config files and view <code>cdaiLog.txt</code> for more information about the error.

---

## Chapter 7. Configure new nodes in Sterling Control Center

After you deploy your Sterling Connect:Direct servers, you can use Sterling Control Center to complete more configuration tasks and to monitor those servers.

There are two tasks you must complete so that Sterling Control Center can securely communicate with Sterling Connect:Direct servers.

1. Import root certificates from each Sterling Connect:Direct server into the Sterling Control Center truststore file.
2. Create new Sterling Control Center node entries with connection information for each Sterling Connect:Direct node.

---

### Importing certificates

Complete the following procedure to import root certificates from a Sterling Connect:Direct server into the Sterling Control Center truststore:

#### Procedure

1. Locate the existing Sterling Control Center truststore or create a new one.

**Note:** If you create a truststore, use the `configCC.bat` or shell script to configure Sterling Control Center to use it.

2. Create a truststore file that contains CA information in JKS format on the Sterling Control Center engine.
3. If a truststore file in JKS format is not available, use the default truststore file (`cacerts`) in the `<Sterling Control Center installation directory>/jre/lib/security` directory. This truststore file contains authentication information for most CAs.
4. Import the root certificate of the Sterling Connect:Direct server into the truststore on the Sterling Control Center engine. Use the **Import to Trust Store** feature of IBM Sterling Certificate Wizard.
5. Configure the Sterling Control Center engine for a secure connection.

For more information about creating a truststore, see the *Configure a Secure Connection* section of the *IBM Sterling Control Center Getting Started Guide*.

---

### Creating server node entries

Complete the following procedure to create Sterling Connect:Direct node entries:

#### Procedure

1. Start the Sterling Control Center console.
2. Select **Manage > Add Server**. The **Add Server** wizard displays.
3. Type the server name or alias and an optional description.
4. Click **Next**.
5. Select the server type **Sterling Connect:Direct with TCP/IP API**.
6. Complete the requested information on the **Connection** page of the **Add Server** wizard for Sterling Connect:Direct servers.
7. Optionally, add this server to a server group by selecting a group name in **Groups** and moving it to **Selected Groups** by clicking **>**.

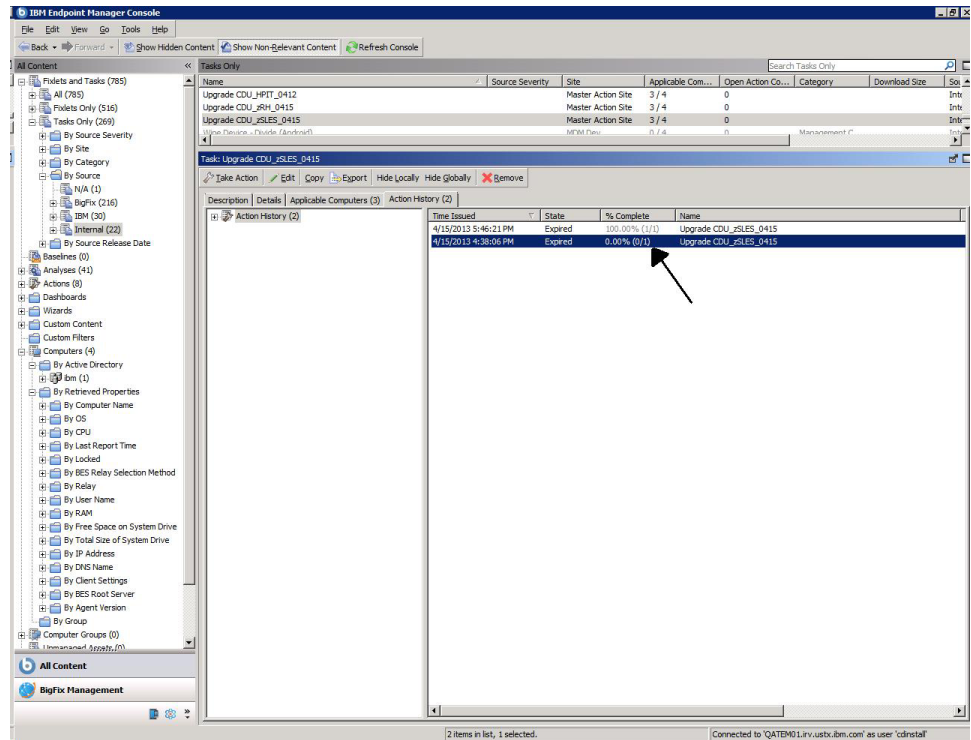


## Chapter 8. Troubleshooting

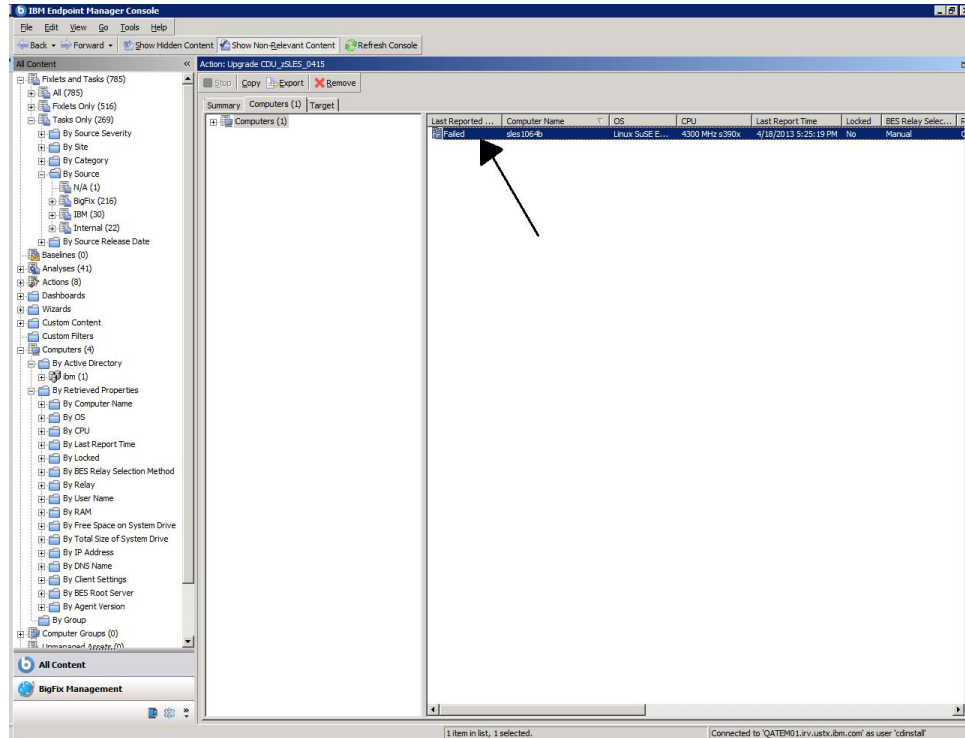
If a Sterling Connect:Direct installation fails when you use TEM, diagnose the problem from the TEM server console.

### Procedure

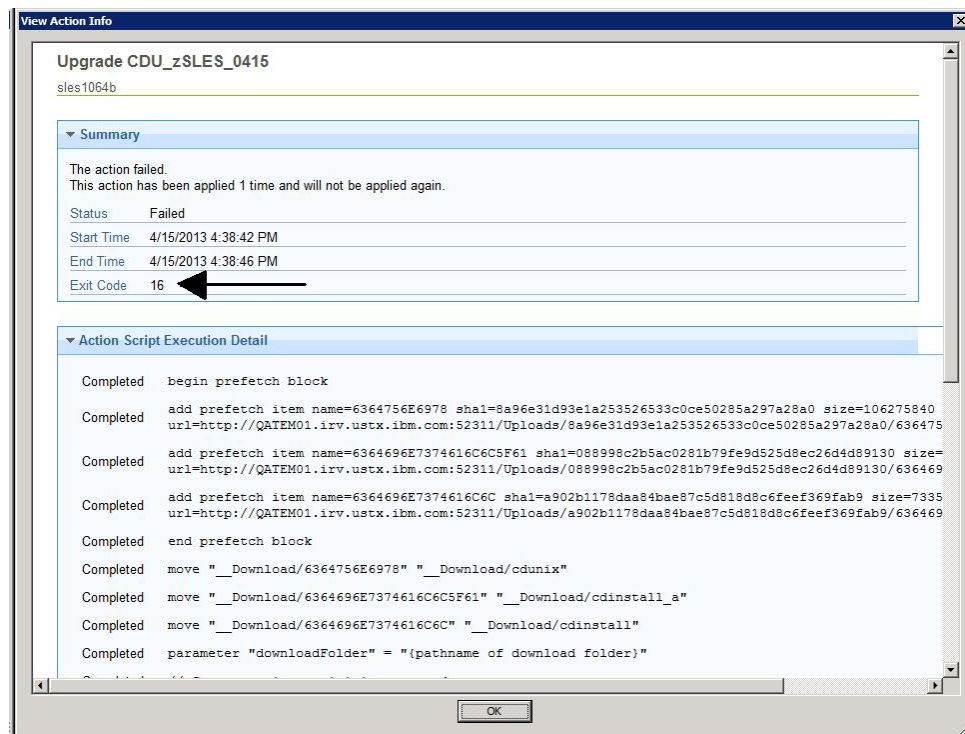
1. Start the TEM console.
2. Click the **All Content** domain button that is located beneath the **Domain** Panel.
3. Select **Fixlets and Tasks > Tasks Only > Internal** and find the specific task that failed.



4. Double-click the failed task to open the **Action Summary**.
5. Select the **Computers** tab and locate the failed action information.



6. Double-click the failed action report. A **View Action** window opens with detailed information about the task.
7. Locate the **Exit Code**.



8. Match the **Exit Code** with the Sterling Connect:Direct message ID for enterprise deployment. Refer to the deployment messages in this document.  
For example, if the **Exit Code** is 16, the **Exit Code** for Sterling Connect:Direct for UNIX is CDAI016E - No keycert for S+ install.



---

## Notices

This information was developed for products and services offered in the U.S.A.

IBM may not offer the products, services, or features discussed in this document in other countries. Consult your local IBM representative for information on the products and services currently available in your area. Any reference to an IBM product, program, or service is not intended to state or imply that only that IBM product, program, or service may be used. Any functionally equivalent product, program, or service that does not infringe any IBM intellectual property right may be used instead. However, it is the user's responsibility to evaluate and verify the operation of any non-IBM product, program, or service.

IBM may have patents or pending patent applications covering subject matter described in this document. The furnishing of this document does not grant you any license to these patents. You can send license inquiries, in writing, to:

*IBM Director of Licensing*

*IBM Corporation*

*North Castle Drive*

*Armonk, NY 10504-1785*

*U.S.A.*

For license inquiries regarding double-byte character set (DBCS) information, contact the IBM Intellectual Property Department in your country or send inquiries, in writing, to:

*Intellectual Property Licensing*

*Legal and Intellectual Property Law*

*IBM Japan Ltd.*

*19-21, Nihonbashi-Hakozakicho, Chuo-ku*

*Tokyo 103-8510, Japan*

**The following paragraph does not apply to the United Kingdom or any other country where such provisions are inconsistent with local law:**

INTERNATIONAL BUSINESS MACHINES CORPORATION PROVIDES THIS PUBLICATION "AS IS" WITHOUT WARRANTY OF ANY KIND, EITHER EXPRESS OR IMPLIED, INCLUDING, BUT NOT LIMITED TO, THE IMPLIED WARRANTIES OF NON-INFRINGEMENT, MERCHANTABILITY OR FITNESS FOR A PARTICULAR PURPOSE. Some states do not allow disclaimer of express or implied warranties in certain transactions, therefore, this statement may not apply to you.

This information could include technical inaccuracies or typographical errors. Changes are periodically made to the information herein; these changes will be

incorporated in new editions of the publication. IBM may make improvements and/or changes in the product(s) and/or the program(s) described in this publication at any time without notice.

Any references in this information to non-IBM Web sites are provided for convenience only and do not in any manner serve as an endorsement of those Web sites. The materials at those Web sites are not part of the materials for this IBM product and use of those Web sites is at your own risk.

IBM may use or distribute any of the information you supply in any way it believes appropriate without incurring any obligation to you.

Licensees of this program who wish to have information about it for the purpose of enabling: (i) the exchange of information between independently created programs and other programs (including this one) and (ii) the mutual use of the information which has been exchanged, should contact:

*IBM Corporation*

*J46A/G4*

*555 Bailey Avenue*

*San Jose, CA 95141-1003*

*U.S.A.*

Such information may be available, subject to appropriate terms and conditions, including in some cases, payment of a fee.

The licensed program described in this document and all licensed material available for it are provided by IBM under terms of the IBM Customer Agreement, IBM International Program License Agreement or any equivalent agreement between us.

Any performance data contained herein was determined in a controlled environment. Therefore, the results obtained in other operating environments may vary significantly. Some measurements may have been made on development-level systems and there is no guarantee that these measurements will be the same on generally available systems. Furthermore, some measurements may have been estimated through extrapolation. Actual results may vary. Users of this document should verify the applicable data for their specific environment.

Information concerning non-IBM products was obtained from the suppliers of those products, their published announcements or other publicly available sources. IBM has not tested those products and cannot confirm the accuracy of performance, compatibility or any other claims related to non-IBM products. Questions on the capabilities of non-IBM products should be addressed to the suppliers of those products.

All statements regarding IBM's future direction or intent are subject to change or withdrawal without notice, and represent goals and objectives only.

All IBM prices shown are IBM's suggested retail prices, are current and are subject to change without notice. Dealer prices may vary.

This information is for planning purposes only. The information herein is subject to change before the products described become available.

This information contains examples of data and reports used in daily business operations. To illustrate them as completely as possible, the examples include the names of individuals, companies, brands, and products. All of these names are fictitious and any similarity to the names and addresses used by an actual business enterprise is entirely coincidental.

#### COPYRIGHT LICENSE:

This information contains sample application programs in source language, which illustrate programming techniques on various operating platforms. You may copy, modify, and distribute these sample programs in any form without payment to IBM, for the purposes of developing, using, marketing or distributing application programs conforming to the application programming interface for the operating platform for which the sample programs are written. These examples have not been thoroughly tested under all conditions. IBM, therefore, cannot guarantee or imply reliability, serviceability, or function of these programs. The sample programs are provided "AS IS", without warranty of any kind. IBM shall not be liable for any damages arising out of your use of the sample programs.

Each copy or any portion of these sample programs or any derivative work, must include a copyright notice as follows:

© IBM 2013. Portions of this code are derived from IBM Corp. Sample Programs. © Copyright IBM Corp. 2013.

If you are viewing this information softcopy, the photographs and color illustrations may not appear.

#### **Trademarks**

IBM, the IBM logo, and [ibm.com](http://www.ibm.com)<sup>®</sup> are trademarks or registered trademarks of International Business Machines Corp., registered in many jurisdictions worldwide. Other product and service names might be trademarks of IBM or other companies. A current list of IBM trademarks is available on the Web at "Copyright and trademark information" at <http://www.ibm.com/legal/copytrade.shtml>.

Adobe, the Adobe logo, PostScript, and the PostScript logo are either registered trademarks or trademarks of Adobe Systems Incorporated in the United States, and/or other countries.

IT Infrastructure Library is a registered trademark of the Central Computer and Telecommunications Agency which is now part of the Office of Government Commerce.

Intel, Intel logo, Intel Inside, Intel Inside logo, Intel Centrino, Intel Centrino logo, Celeron, Intel Xeon, Intel SpeedStep, Itanium, and Pentium are trademarks or registered trademarks of Intel Corporation or its subsidiaries in the United States and other countries.

Linux is a registered trademark of Linus Torvalds in the United States, other countries, or both.

Microsoft, Windows, Windows NT, and the Windows logo are trademarks of Microsoft Corporation in the United States, other countries, or both.

ITIL is a registered trademark, and a registered community trademark of the Office of Government Commerce, and is registered in the U.S. Patent and Trademark Office.

UNIX is a registered trademark of The Open Group in the United States and other countries.

Java™ and all Java-based trademarks and logos are trademarks or registered trademarks of Oracle and/or its affiliates.

Cell Broadband Engine is a trademark of Sony Computer Entertainment, Inc. in the United States, other countries, or both and is used under license therefrom.

Linear Tape-Open, LTO, the LTO Logo, Ultrium and the Ultrium Logo are trademarks of HP, IBM Corp. and Quantum in the U.S. and other countries.

Connect Control Center®, Connect:Direct®, Connect:Enterprise, Gentran®, Gentran®:Basic®, Gentran:Control®, Gentran:Director®, Gentran:Plus®, Gentran:Realtime®, Gentran:Server®, Gentran:Viewpoint®, Sterling Commerce™, Sterling Information Broker®, and Sterling Integrator® are trademarks or registered trademarks of Sterling Commerce®, Inc., an IBM Company.

Other company, product, and service names may be trademarks or service marks of others.





Product Number: 5725-C99

Printed in USA