

Gentran Integration Suite™

Business Process Modeling Guide

Version 4.2

Sterling Commerce
An IBM Company

© Copyright 2007 Sterling Commerce, Inc. All rights reserved.
www.sterlingcommerce.com/Documentation/GIS42/HomePage.htm.

Contents

Chapter 1 About Gentran Integration Suite Business Processes **7**

Welcome to Business Process Modeling	7
About Business Processes	7
Business Process Models	8
Benefits of Business Process Modeling Flexibility	8
Support for Business Process Modeling	9
Graphical Process Modeler	9
Standards, Foreign Language and Data Type Support	9
Available Service and Adapter Components	9
Support for High Volumes of Transactions	9
Visibility Into Process Activities	9
What Kinds of Things Can Business Processes Do?	10
Automation and Integration	10
Examples	11
Business Process Concepts	12
Subprocesses	13
Reusability of Business Processes	14
Predefined Business Process	14
Business Process Instance	14
Service Configurations in Business Process Models	15
Business Process Version	15
Business Process Model Components	15
Business Process Flow	16
Flow Complexity	16
Business Process Management Activities	17

Chapter 2 Planning Your Business Process Models **19**

Introduction to Planning Process Models	19
How to Approach Business Process Planning	19
Business Process Model Planning Stages	20
Identifying Business Needs	21
Identifying Activities in a Business Process	22
Identifying Subprocesses	23
Subprocess Example	24

Identifying Opportunities for Automation	24
Highlighting Manual and Automatic Activities	24
Example Process with Manual and Automatic Activities	25
Identifying Integration Points in Your Process	25
Communication Adapters for Integration	26
Example Integration Points Table	26
Organizing Your Business Process Models	27
BPML Activities Requirements	27
Organizational Concepts	28
Using Adapters to Start Business Processes	29
Tying It Together	30
Maximizing Visibility Into Business Processes	30
Monitoring and Tracking Considerations	30
Persistence Levels and Archive and Purge Settings	31
Document Storage Considerations	32
Using Predefined Business Process Models	32
Locating and Identifying Predefined Business Process Models	33
Decision Points and Rules in Business Process Models	34
Rules and Conditions for XML Documents	34
BPML Activities in Business Process Models	35
Parent Activities Used in Pairs	35
More Complex BPML Activities	36
Chapter 3 Creating Business Process Models	38

About Creating Business Process Models	39
Process Summary of Creating a Business Process Model in the GPM	39
Creating or Modifying a Business Process Model in the GPM	41
Preliminary Configuration Tasks	41
Procedure	41
When to Configure Services for Business Process Models	43
About Refreshing the Service Configurations in the GPM	43
Configuring Parameters in GPM Element Editors	43
Modifying Read-Only Parameters in the GPM	45
Adding XPath Expressions to Service Configurations in the GPM	45
Adding Subflows in the GPM	45
Defining and Assigning Rules and Conditions	46
Defining Simple Syntax Rules	47
Defining Complex Syntax Rules Using XPath	47
Assigning Rules and Conditions in Business Process Models	48
Modifying Annotations	49
Deleting an Annotation	49
Assigning Name-Value Pairs in a Business Process Model	49
Assigning Provided Name-Value Pairs in the GPM	49
Creating Unique Name-Value Pairs	50
Using the Correlation Service	50
Copying a Business Process Model for Use In the GPM	50
Creating and Modifying Business Process Models In the Text Editor	51
Creating a Subprocess	52
Using the OnFault Group in the GPM	53

Chapter 4 Implementing a Business Process Model **54**

About Implementing Business Process Models	54
Managing Business Process Model Versions	55
Business Process Model Validation	55
Validating Pre-existing Business Process Models	57
Creating a Business Process Definition	57
About Checking in Business Process Models	57
Testing the Business Process Model	58
Business Process Model Processing Options	59
Process Name	59
Description	59
Process Levels	59
Persistence Options	63
Deadline Settings	64
Life Span	65
Set Default Version	65
Confirm	66
Checking In Business Process Models Through the GPM	66
Checking In a Single Business Process Model in the GPM	66
Checking In Multiple Business Process Models in the GPM	68
Procedure	68
Checking In a New Version of a Business Process Model in the GPM	69
Checking In a Business Process Model Using the Text Editor	70
Checking In a New Business Process Model Using Gentran Integration Suite Interface	70
Checking In a New Version of an Existing Business Process Version in Gentran Integration Suite ..	72
Testing a Business Process Model	73
Procedure	73

Chapter 5 Modifying and Managing Business Process Models **75**

Business Process Version Management	76
Checking Out a Business Process Model Using the GPM Source Manager	78
Check Out a Single Business Process Model	79
Check Out Multiple Business Process Models	80
Checking Out a Process Model in Gentran Integration Suite Interface	80
Procedure	81
Modifying a Business Process Model Using the GPM	81
Modifying a Business Process Model Using the Text Editor	82
Enabling a Disabled Business Process	83
Deleting a Business Process Model	83
Considerations	84
Procedure	84

Appendix A Commonly Used Predefined Process Models **85**

ACHDeenvelope Business Process	86
Before Using the AchDeenvelope Business Process	88

ACHEnvelope Business Process	88
Before Using the ACHEnvelope Business Process	90
EDI Develope Business Process	90
Before Using EDI Develope	91
OverdueAckCheck Business Process	92
Before Using OverdueAckCheck	92
HandleSOAPRequest Business Process	93
Before Using HandleSOAPRequest	97
SendSOAPRequest Business Process	98
Before Using SendSOAPRequest	100
Index	102

About Gentran Integration Suite Business Processes

- ◆ *Welcome to Business Process Modeling* on page 7
- ◆ *Benefits of Business Process Modeling Flexibility* on page 8
- ◆ *What Kinds of Things Can Business Processes Do?* on page 10
- ◆ *Business Process Concepts* on page 12
- ◆ *Business Process Model Components* on page 15
- ◆ *Business Process Flow* on page 16
- ◆ *Business Process Management Activities* on page 17

Welcome to Business Process Modeling

Gentran Integration Suite approach to integration centers on business process management. Business process modeling is the foundation of the configurability and extensibility of Gentran Integration Suite. Using Gentran Integration Suite, you coordinate and automate the activities that make up the processes your company completes to do business. From advanced file translation and transport to content-based routing and complex integration, including human interaction, you can configure the activities you need using Gentran Integration Suite business process modeling features.

About Business Processes

In the business world, a business process is any goal-driven, ordered flow of activities that accomplishes a business objective. Invoicing, order fulfillment, and updating employee information are all examples of business processes. In Gentran Integration Suite, *business process* refers to the automated implementation of business objectives.

Most Gentran Integration Suite processing activities are predicated upon defined business processes—the custom-designed programming instructions you provide to Gentran Integration Suite, to perform your required activities. The fact that you can custom create business processes in Gentran Integration Suite means that you control:

- ◆ What happens when
- ◆ Which Gentran Integration Suite components perform the activities
- ◆ What rules, constraints, or decision points play a role in the execution of the activities
- ◆ The degree of available visibility into processing
- ◆ The amount and type of data the system records about the activities

Gentran Integration Suite components and features are designed to provide a variety of options for configuring your activities. As a result, you often have multiple choices available when determining how to achieve a given goal. With so many choices, you can create business processes that are expressly suited to your organization's requirements—not only to complete the required work, but also to maximize processing efficiency for all of your processes, streamline your ongoing maintenance tasks, and facilitate monitoring and tracking operations.

For example, some of your processes may require quick turnaround, while others may involve batch processing not tied to a time limit. You can configure efficient processing of both types of processes by running low-priority batch processes during slow periods, which frees system resources for the higher-priority items that run immediately. Customizing your processing activity for maximum efficiency keeps system resources available for enhanced management options such as archiving, data persistence and document tracking.

Business Process Models

Gentran Integration Suite allows you to create an automated business process using drag-and-drop technologies to link activities in a digital, graphic representation of the related task—known as a *business process model*. The business process model is the definition for the process, used by Gentran Integration Suite each time it runs the process. The activities in your business process models are carried out by services and adapters, represented by icons in the graphical interface. This method enables you to incorporate small units of reusable code into your business processes, and, at the same time, create larger units of reusable code specific to your business operations.

Creating business process models is the central endeavor around which your use of Gentran Integration Suite hinges. Think of business processes in Gentran Integration Suite as the structures by which you organize software components and activities to fulfill your work objectives.

Benefits of Business Process Modeling Flexibility

Your business processes and the efficiency with which they progress are the key to your organization's success. To be competitive, you must be responsive to constant change within your trading partner community. Changes driven by new requirements such as new data formats and communication protocols, new business exchanges, and a broad range of partners varying in size, type, and sophistication, mean your organization must be flexible enough to adapt quickly and efficiently.

By integrating activities through automated business process models, all in the form of easily reusable code, you increase the value of your e-business operations. As your needs change, modifying your business process models to keep pace is simple.

Support for Business Process Modeling

Gentran Integration Suite components and tools are designed to support the full range of standards, foreign languages and data types, in a user-friendly fashion.

Graphical Process Modeler

The graphical modeling tool (the Graphical Process Modeler, or GPM) that enables you to create business process models using a visual, drag-and-drop palette, converts your graphic business process models into code, saving you the effort of writing code. Your process models are immediately executable, and the process development cycle time is short.

The primary benefits of business process definition using the model format are that you do not need direct developer involvement, you can create your models in a visual medium, and you can copy any business process model or portion of a model to use it in another process, eliminating the need to duplicate effort.

Standards, Foreign Language and Data Type Support

The services and adapters provided with Gentran Integration Suite are developed using publicly agreed-upon specifications for data formats, communications protocols, workflow modeling, and security to maximize interoperability between systems and trading partners.

Gentran Integration Suite code base supports universal character-encoding, therefore, programs with which your business processes interact can be written in nearly any language. And Gentran Integration Suite supports virtually any file-, message- or stream-based data type.

Available Service and Adapter Components

Gentran Integration Suite provides more than 200 available services and adapters you can build into your business process models. This includes a host of configurable adapters ready for use in business processes for activities such as running legacy programs, ERP systems, Perl scripts, Java™ code, decision engines, defined subprocesses, or virtually any program.

Adapters provide noninvasive integration with ERP, Supply Chain Management, Customer Relationship Management, other packaged applications, legacy applications, communications protocols, queuing solutions, and databases.

Support for High Volumes of Transactions

Depending on your task (for example, translation and routing, content-based routing, or EDI inbound or outbound transactions), and the standard in use (X12, EDIFACT, and so on) you can process anywhere from hundreds of thousands to millions of transactions per hour according to the business process models you create. Gentran Integration Suite provides a variety of adapters designed to support high-volume processing.

Visibility Into Process Activities

Gentran Integration Suite enables you to view general and detailed processing information for active and recent business processes and service activities. Because Gentran Integration Suite interoperates with other enterprise system management products, you get full-spectrum transaction visibility.

In addition to process data, you can enable document tracking for a business process so that the system carries tracking information with the document, and then, for monitoring and tracking purposes you can:

- ◆ Track processing history of the document
- ◆ View transaction details related to the document
- ◆ Obtain processing state information related to the document

Portlets in Gentran Integration Suite dashboard interface enable at-a-glance monitoring of your processing activities, and you can configure custom reports related to the operations undertaken by your business processes.

What Kinds of Things Can Business Processes Do?

The strength of using the business process approach to integration is enhanced efficiency through automation, combined with simplified configuration of integration tasks.

Automation and Integration

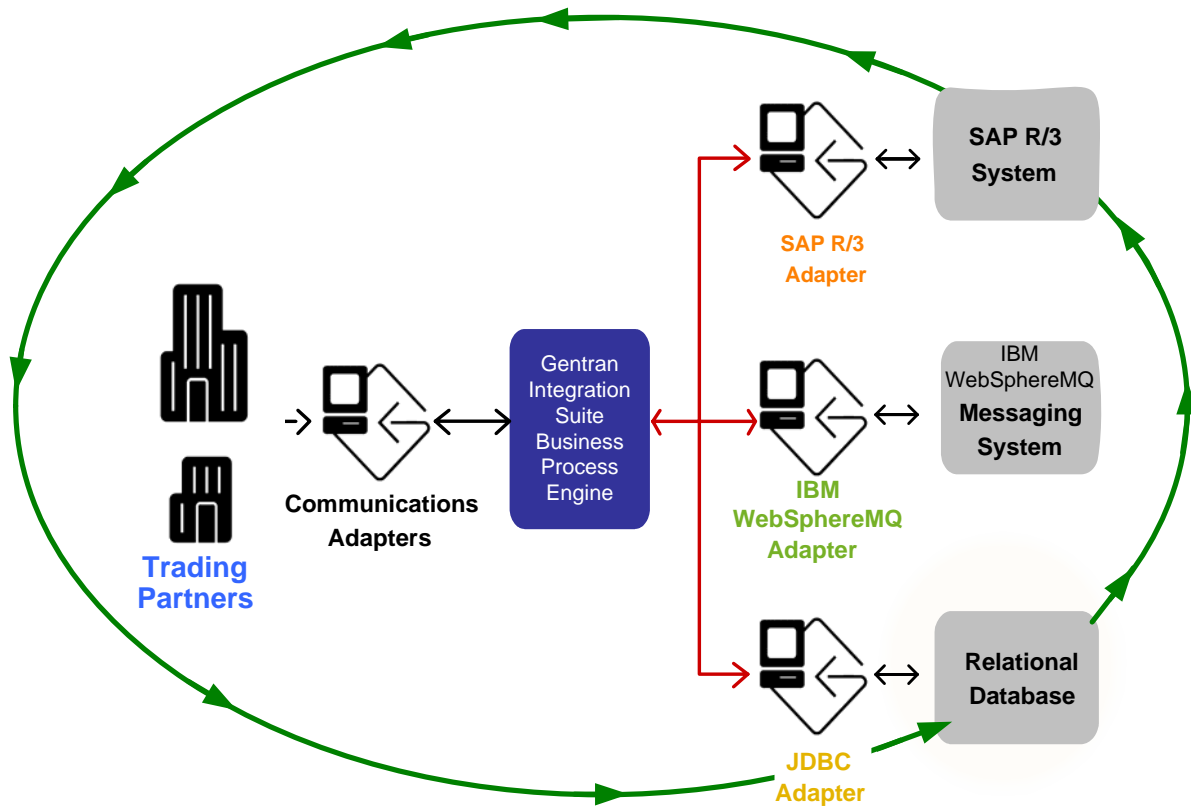
Any time you can replace manual intervention points in your business processes with automated capabilities, you save money. Classic examples of intervention points include exception management such as escalation and transaction reconciliation, error handling, and content-based routing.

Gentran Integration Suite business process modeling supports your end-to-end integration goals by enabling you to link vital systems and processes using services, adapters and human interaction points that you need to achieve your business objectives. You can embed conditions within the process flows.

The following figure shows Gentran Integration Suite integration engine coordinating communication of data to trading partners. Business processes related to this scenario might involve:

- ◆ Transforming data (using services) from different applications so that it can be communicated to other systems.
- ◆ Moving and communicating data between different systems external to Gentran Integration Suite, using adapters.

- ◆ Communicating data to trading partners, using adapters.



Examples

The following table provides examples of how business process models can help you to automate and integrate your activities:

Type of Activity	Example Business Process Activities
Automating	<ul style="list-style-type: none"> ◆ Route messages according to their content. ◆ Configure mailbox store-and-forward services. ◆ Support real-time request and reply processing within a process. ◆ Build on-fault processing steps into your process models ◆ Send alerts and notifications automatically within a process.

Type of Activity	Example Business Process Activities
Integrating	<ul style="list-style-type: none"> ◆ Incorporate messaging, human interaction, and file and database activities (a set of services, called <i>human interaction services</i>, enable people to interact with a business process). For instance, a worker can use a Web browser to send a message, as a step in a business process. When the message is sent, the business process continues. The process could be configured to both send the message and store a record in a database. ◆ Set up self-service access to information across trading partner systems. ◆ Integrate with SNMP network management, LDAP directories, and Web services. ◆ Integrate with diverse operating and ERP systems.
Automating and Integrating	<ul style="list-style-type: none"> ◆ Incorporate XML, EDI, and proprietary file translation, transformation and filtering. ◆ Facilitate e-business with your trading partners for a vast assortment of transactions, including EDI, e-mail, data publishing, and reliable bulk file management. ◆ Automate the integration of batch, synchronous, and asynchronous applications. For instance, you can integrate a legacy inventory management system with your front office Web-based order processing and accounts receivable invoicing systems. ◆ Support multi-party collaboration work processes for the entire document life cycle. For instance, you can route data through a series of review-and-approval steps, allowing data modifications to be made by the reviewing parties along the way, and the reviewers could be using disparate systems. ◆ Synchronize data in different internal applications or between your organization and your trading partners.

Business Process Concepts

In Gentran Integration Suite, a business process is a series of linked software and possibly human activities that accomplishes a business goal. The activities in a business process are primarily performed by components known as services and adapters, and are orchestrated by Gentran Integration Suite integration engine.

The Business Process engine runs business processes according to the instructions that comprise your *business process models*. Technically, a business process model is defined by a single, unique BPML document, a .bpml file. BPML is an XML-based language used to describe (model) and run business processes.

Business process models are the executable tasks and instructions that make up processes. A Gentran Integration Suite tool called the Graphical Process Modeler, or GPM, enables you to create business process models by manipulating icons that represent services, adapters, and other specific instructions, in a graphical palette. The GPM converts the graphical representation of business processes to BPML behind the scenes.

The following diagram illustrates a simple business process model as it displays in the GPM:



This example is one of the predefined business process provided for your convenience with Gentran Integration Suite (this is the EDI deenveloping business process). The following figure illustrates the BPML code that is created, stored and used by Gentran Integration Suite for a business process model:

```
<process name="EDIDeenvelope">
  <sequence>
    <operation>
      <participant name="EDIDeenvelope"/>
      <output message="Xout">
        <assign to="." from="*"></assign>
      </output>
      <input message="Xin">
        <assign to="." from="*"></assign>
      </input>
    </operation>
  </sequence>
</process>
```

For more information about predefined business process models, see:

- ◆ *Reusability of Business Processes* on page 14
- ◆ *Using Predefined Business Process Models* on page 32
- ◆ *Subprocesses* on page 13

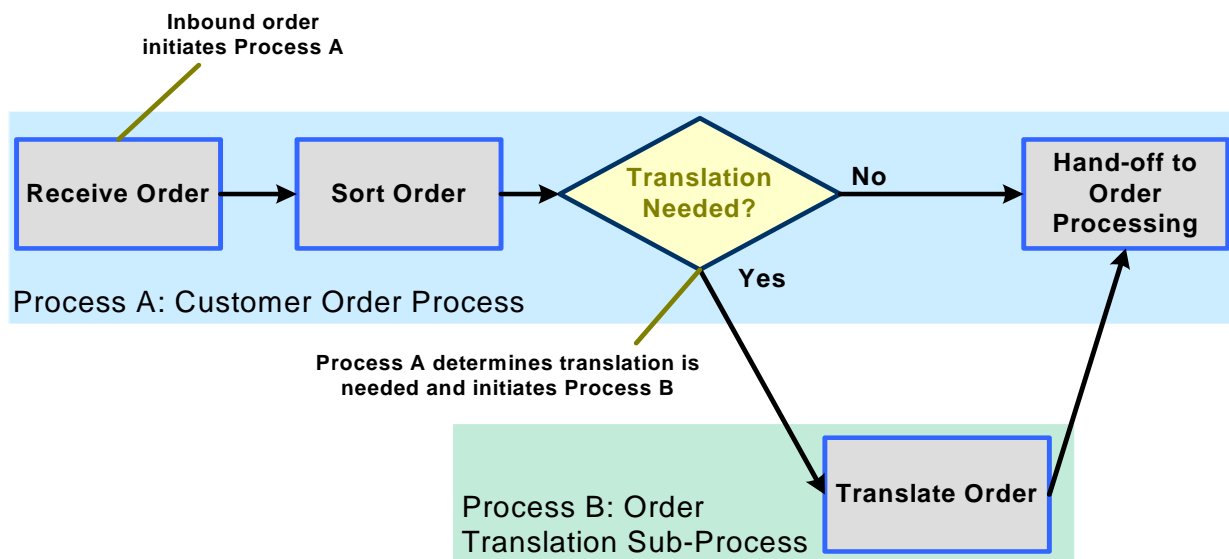
Subprocesses

Any business process can be a subprocess. The term *subprocess* indicates a business process that is invoked as part of another business process (the initiating process is called the *parent process*). *Subprocess* is an integral concept in Gentran Integration Suite, because building a business process once, but using it as a subprocess in multiple other business processes, simplifies future maintenance.

When you modify a process model that is called as subprocess by multiple business processes, you make one set of modifications – in the subprocess – but all of the parent business processes use the updated subprocess when they run.

In this way, subprocesses work with the design concept of reusability; by identifying simple units of work that appear in more than one business process, and designing your subprocesses to be as generic as possible,

you can save a great deal of time. The following illustration shows how a subprocess fits into a larger business process model:



Reusability of Business Processes

Reusability is the concept related to creating business processes that can be used in multiple operations. Reuse is beneficial both for uniformity, which aids in troubleshooting and monitoring, and for efficient maintenance of your processes. For example, if you use a single business process model as a subprocess within many larger process models, any time you need to modify the activities in the subprocess, you need only update one model, and the changes are reflected everywhere the process is used.

Predefined Business Process

A *predefined business process* is a business process model that is provided with Gentran Integration Suite and is ready to use upon installation of Gentran Integration Suite, with minimal configuration required. A variety of predefined business processes are available for your use. For additional information, see *Using Predefined Business Process Models* on page 32.

Business Process Instance

Because a business process model is the definition of a process, each time Gentran Integration Suite executes that specific set of instructions, it runs what is referred to as an *instance* of the business process defined in the model. This distinction enables you to differentiate between multiple executions of the same business process model, which is imperative for monitoring and troubleshooting your processing activities. Gentran Integration Suite identifies each instance with an *instance ID* in the interface.

Service Configurations in Business Process Models

Services and adapters are software components that do work (adapters are a type of service). Business processes call services and adapters to do this work, but you must configure them for use before you can include them in your business process models.

Services exist on two levels in Gentran Integration Suite: as service types and service configurations. Service *types* are the services installed with Gentran Integration Suite—these are service definitions provided for you to copy and configure according to your needs.

The act of copying and configuring a service type creates a service *configuration*. You must create service configurations in order to use services with your business processes. A service configuration is a unique definition of a service or adapter type for which you have specified specific parameters. When you create a service configuration, you save it with a unique name.

Business Process Version

Before using business process models, you must check them into Gentran Integration Suite, which saves a copy of each file you check in. A *business process version* is one of these copies of a business process model checked in to Gentran Integration Suite. The saved versions enable you to revert to using an older copy of a business process model if the need arises, and to compare different iterations of your process models.

Business Process Model Components

When you create business process models, you link Gentran Integration Suite components needed to carry out the required tasks for your business objective, creating a graphical representation. All components are represented by icons in the GPM. The following table describes components used in business process modeling:

Business Process Component	Description
Service	<p>A component you can configure in a Gentran Integration Suite business process to carry out an activity. The Translation service, for example, performs data translation within a business process.</p> <p>An adapter is a type of service that communicates with external systems to move data in and out of Gentran Integration Suite. For example, you can use the File System adapter as part of a business process to collect files.</p>
Adapter	See <i>Service</i> , above.

Business Process Component	Description
BPML activity	<p>Performs a BPML function. BPML activities enable a business process to perform an operation (such as invoking a service), providing control of the flow of data through a business process.</p> <p>Think of BPML activities as instructions built into a process. The BPML activity called the Choice activity, for instance, allows you direct the flow of data in a process into different activities according to the result of a decision. For example, you can create a decision point that routes high-volume invoices to a manager while passing smaller invoices on for immediate processing.</p>

Business Process Flow

Gentran Integration Suite architecture centers around the execution of individual services according to your process models. At the core of the system architecture is the integration engine, which executes the services and adapters needed to achieve your business goals and enable visibility into processing activity. Each step in a process model either initiates an activity in the process flow, is initiated and runs during a process flow, or ends a process flow.

Gentran Integration Suite may start business processes in different ways:

- ◆ According to a user-defined schedule
- ◆ In response to an activity, such as the placement of a file into a specified folder (you can configure a single input adapter in Gentran Integration Suite to work outside of a business process and to dynamically select the appropriate process to start when it receives a file)
- ◆ A user manually starts a process

At each step in a business process, the integration engine calls the indicated service and one of the following ensues:

- ◆ Services run within Gentran Integration Suite.
- ◆ Adapters call third-party applications to perform activities outside of Gentran Integration Suite.
- ◆ BMPL activities configured in the business process model provide instructions to the integration engine regarding the process flow, such as start and stop, assign a specified value in the process data, run specified activities simultaneously, and so forth.

When an activity completes, the integration engine progresses to the next step in the business process.

At each step in a business process, Gentran Integration Suite saves a copy of work flow context (WFC) data, which records the state of the business process from service to service. The WFC contains the document being manipulated by the business process and is where each service reports any errors.

Flow Complexity

A business process can flow as a simple linear configuration or contain one or more:

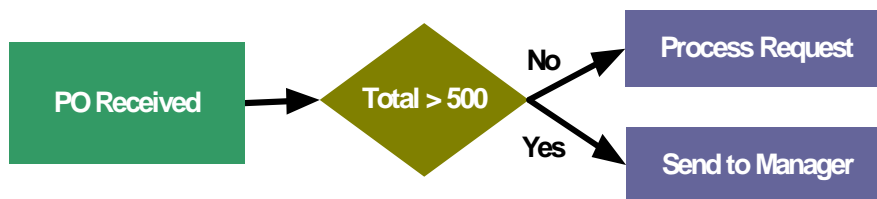
- ◆ Decision points requiring human or system determination of the next steps in the process

- ◆ Subflows or nested activities
- ◆ Loops (repeating activities)

An example of a simple business process is fire-and-forget publishing of a business event to a group of interested participants. The steps in the process would be triggering the process and the subsequent publishing of the event to the interested parties.

A complex business process might require multiple interactions among many applications in a start-and-stop, request-response mode, along with human interaction, occurring over a long period of time

The following figure illustrates the tasks in a simple process containing a decision point (a diamond represents a decision point):



In this figure, the business process may include the following activities:

1. Receive a purchase order (PO). In a likely usage scenario, Gentran Integration Suite receives the document through an adapter configured to operate outside the context of a business process. According to the content of the document, Gentran Integration Suite determines which business process to start and starts the first service in the process by placing the message or document and other appropriate process state information on a queue for the appropriate service in the selected business process.
2. The appropriate service retrieves the initial business process state information from the queue (PO Received, in the figure depicted above) and processes the next step in the business process.
3. A service, according to rules assigned to a Choice activity in the business process model, reviews the PO amount to determine whether the PO is more than or less than \$500.
4. If the amount is less than \$500, an adapter sends the modified business process state information, with the data, to a specific application for PO request processing (this likely involves initiating another process).
5. If the amount is greater than \$500, an adapter sends the modified business process state information, with the data, to a specific application or human interaction service for a manager to further review the request.

For more information about structuring business process models, see *Organizing Your Business Process Models* on page 27.

Business Process Management Activities

Single business process models generally represent only a portion of an entire business process solution. Typically, users configure multiple business process models to work together to accomplish each business

goal. Gentran Integration Suite is equipped to manage complex operations, but following good design and maintenance practices also helps to ensure that Gentran Integration Suite is optimized for best performance.

Because business process models are likely to have decision points and interrelated subprocesses, creating business process models may be complicated by the need to manage many business processes at the same time. Often, a business process shares aspects of other business processes, such as access to the same software applications, use of the same B2B processing standards, and use of the same resources in Gentran Integration Suite.

Managing your business process models involves the following tasks:

- ◆ Planning the most efficient processes to achieve your business objectives
- ◆ Determining Gentran Integration Suite components needed to complete the tasks in the processes
- ◆ Configuring business process model components
- ◆ Creating business process models
- ◆ Testing process models
- ◆ Implementing your business process models in Gentran Integration Suite
- ◆ Modifying business process models as your changing needs require them to grow, shrink, change, merge, and split
- ◆ Keeping records of the process models you create, use, and modify, for reference

Your business process models are Gentran Integration Suite resources, meaning, you can save them to an offline directory and import and export the files as needed from one copy of Gentran Integration Suite to another.

Your business process management goal is to maximize the usefulness and efficiency of the process models you create, while minimizing the work involved in creating and maintaining them. To help minimize set-up time, Gentran Integration Suite includes a number of predefined business process models that you may be able to use. In addition, follow Gentran Integration Suite best practices for business process creation so that your processes run at the maximum system performance possible for your activities.

For detailed information about planning and creating your business process models, see *Planning Your Business Process Models* on page 19.

Planning Your Business Process Models

- ◆ *Introduction to Planning Process Models* on page 19
- ◆ *Business Process Model Planning Stages* on page 20
- ◆ *Identifying Business Needs* on page 21
- ◆ *Identifying Activities in a Business Process* on page 22
- ◆ *Identifying Subprocesses* on page 23
- ◆ *Identifying Opportunities for Automation* on page 24
- ◆ *Identifying Integration Points in Your Process* on page 25
- ◆ *Organizing Your Business Process Models* on page 27
- ◆ *Maximizing Visibility Into Business Processes* on page 30

Introduction to Planning Process Models

Careful planning is the key to developing business process models that both process efficiently and minimize your ongoing process model management efforts. Understand your business problems in detail and prepare to invest the bulk of your effort in process planning and collecting related information. This will make creating your business process models easier.

Much of your research may already be complete. When you outlined your Gentran Integration Suite implementation, you most likely worked with Sterling Commerce Professional Services to create an architectural design plan detailing the ways you intend to use Gentran Integration Suite, and the associated components and features you will employ.

Many of the details of your architectural design plan describe the business process models needed to automate the execution of your processes. Use that information as you progress through the business process planning steps provided in this documentation.

How to Approach Business Process Planning

Essentially, when you create business processes, you are programming Gentran Integration Suite to execute your desired activities. Gentran Integration Suite makes your tasks easier by providing preconfigured

services, adapters, Web templates, and the Graphical Process Modeler tool. However, the following development tenets should be the foundation of your business process modeling strategy:

◆ **Uniformity and reusability**

Approach the creation of all business process models in the same way, with a focus on maintainability. A uniform modeling approach increases your opportunities to reuse processes and parts of processes throughout your implementation, and streamlines ongoing management of your process models as your needs change over time.

For more information about the concept of reusability and other terms related to business process modeling, see *Business Process Concepts* on page 12.

◆ **Performance**

Understand how your implementation is designed so that you do not create process models that hinder performance. Your goal is to maintain acceptable levels of functionality and performance as the amount of work being performed in the system increases.

As you develop your business process models, you may discover more efficient ways to perform a required task. For example, depending on the complexity and size of your documents, in some cases it may be faster to use an XML Encoder service instead of a full translation solution.

Familiarize yourself with Gentran Integration Suite performance and tuning recommendations and techniques and build business process models that do not unnecessarily tax your system. Determine how much business data you will need to keep in your active system, and set up your processes to only save needed information. Follow the best practices for business process models.

◆ **Technical knowledge**

Be familiar with the software applications, standards, security, and performance requirements that are related to your integration needs, or have personnel resources available who can help. As you configure the activities within your process models you will need a great deal of technical information.

Business process models in Gentran Integration Suite are created in BPML code. A basic understanding of this format will help you work with business process models.

◆ **Periodic review**

Periodically, review the construction of your business processes to confirm that they meet your reuse and performance requirements, and make adjustments as needed.

After designing your initial processes, you may find that you can consolidate and trim the process to gain efficiencies.

Business Process Model Planning Stages

The following table lists the phases of business process development, with a link to detailed instructions:

Stage	You must identify:	For details, see:
1	Your business needs	<i>Identifying Business Needs</i> on page 21

Stage	You must identify:	For details, see:
2	The separate activities that make up the process of fulfilling your business needs	<i>Identifying Activities in a Business Process</i> on page 22
3	Logical and manageable groups of activities within the process that can be developed as subprocesses	<i>Identifying Subprocesses</i> on page 23
4	Steps where the process can be automated	<i>Identifying Opportunities for Automation</i> on page 24
5	Integration points between steps	<i>Identifying Integration Points in Your Process</i> on page 25
6	The most efficient structure for your business process model	<i>Organizing Your Business Process Models</i> on page 27
7	Your needs for visibility into active and completed process activity	<i>Maximizing Visibility Into Business Processes</i> on page 30

In creating your architectural design plan, you may have completed some of these stages for all or some of the process models you will create.

The topics describing each of the planning stages provide details, instructions, and an example process that continues from stage to stage. Proceed through the stages in sequence for the complete planning process.

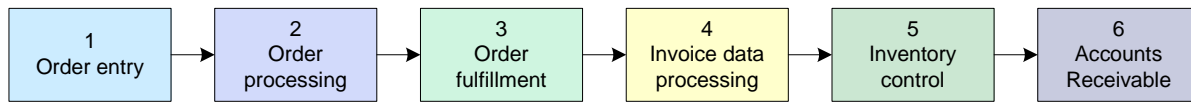
Remember that the information provided here may not apply to every scenario; consider it a general baseline for all scenarios.

Identifying Business Needs

Identifying your business needs consists of noting each business problem, goal, or scenario, and the related progression of actions required to resolve it. For example, if your business need is to process customer orders, you might note the following actions:

1. Receive order.
2. Route order to appropriate departments for processing.
3. Fulfill order.
4. Generate data for invoices.
5. Update inventory records.
6. Generate invoice statements.

The following illustration shows a sample depiction of the business need and its related actions :



Need: Customer Order Processing

When you have completed this stage, move on to *Identifying Activities in a Business Process* on page 22. This documentation uses the Customer Order Processing scenario throughout the remaining stages.

Identifying Activities in a Business Process

After you have outlined a business need and the steps that fulfill it, you must identify in detail the activities within each step that enable the process to move forward.

For example, the following table identifies the activities in each step of the example process for Customer Order Processing (see *Identifying Business Needs* on page 21):

Step	Description	Activities
1. Order Entry	Customers order merchandise by sending EDI documents.	<ul style="list-style-type: none"> ◆ Orders enter system through a communications adapter for HTTP, AS2, or FTP, or through the EDI VAN.
2. Order Processing	Translate and forward order data.	<ul style="list-style-type: none"> ◆ EDI translator translates EDI document into order processing system format. ◆ Order documents are sent to the order processing application. ◆ Picketickets are produced and sent to warehouse. ◆ Order processing application sends shipping information to order fulfillment department.
3. Order Fulfillment	Workers fulfill orders and initiate record-keeping.	<ul style="list-style-type: none"> ◆ Orders are picked. ◆ Shipping records and pickticket information sent to data processing.
4. Data processing	Data for filled orders recorded and transmitted.	<ul style="list-style-type: none"> ◆ Order data updated. ◆ Invoice data generated. ◆ Data sent to Accounts Receivable application. ◆ Data sent to Inventory Control application.

Step	Description	Activities
5. Inventory control	Inventory data processed.	<ul style="list-style-type: none"> ◆ Inventory control system records updated. ◆ Process for augmenting inventory may be initiated.
6. Accounts receivable	Invoice processed.	<ul style="list-style-type: none"> ◆ Accounts Receivable system generates invoice statements. ◆ Invoices translated to EDI. ◆ Invoices sent to customers through communications adapters.

After you have outlined the activities within your process, proceed to *Identifying Subprocesses* on page 23.

Identifying Subprocesses

Remembering that the concept of reuse is the key to efficient ongoing management of your business process models, you must now take the time to identify possible subprocesses in your scenario (for information about the concepts of reuse and subprocesses, see *Business Process Concepts* on page 12).

Examine the outline of business process activity details you created in Stage 2, and look for logical, manageable groups of activities that you can create as separate subprocesses. Aim to create distinct process models for each subprocess within your overall scenario. You can then configure a *parent* process model that links the subprocesses.

Also consider whether any predefined business process models provided with Gentran Integration Suite, or other business process models you are creating for your organization, perform activities that make up parts of your processes. If they do, you can use them as subprocesses. For information, see *Using Predefined Business Process Models* on page 32.

A group of activities may be well-suited to configuration as a subprocess if any of the following are true:

- ◆ Together they accomplish a single unit of work.
- ◆ The activities are generic enough to reuse.
- ◆ The subprocess can be invoked in a generic way, which increases opportunities for reuse.

For example, rather than building a situation-specific process model that uses a certain map according to hard-coded parameters in the process model, include the Typing or Lookup service to determine which map to use.

- ◆ The activities are bracketed by a pair of related BPML activities (such as Sequence Start and Sequence End) or work within a specific business model. For example:
 - ◆ Request/Response
 - ◆ Produce/Consume

For information about BPML activities, see *Organizing Your Business Process Models* on page 27 and *Gentran Integration Suite and BPML*.

Subprocess Example

Step 2 in the example Customer Order Processing scenario (see *Identifying Activities in a Business Process* on page 22) consists of the following related tasks that together comprise a likely subprocess:

- ◆ Orders are translated into a format the order processing system uses.
- ◆ Order documents are sent to the order processing application.
- ◆ Picketickets are produced and sent to warehouse.
- ◆ Order processing application sends shipping information to order fulfillment department.

These activities comprise one unit of work, may be reused, and different adapters can call this process to initiate translation.

After you have determined which processes and subprocesses to create, proceed to *Identifying Opportunities for Automation* on page 24. You must complete the remaining stages for each process and subprocess you will create.

Identifying Opportunities for Automation

Now that the business process, its steps, and the activities within those steps are defined, you must consider process automation. *Process automation* means running each step of a business process with little or no user intervention. Gentran Integration Suite provides a host of components designed to enable you to automate the bulk of your activities.

Highlighting Manual and Automatic Activities

Answer the following questions to determine which steps and activities in a process can be automated:

- ◆ Which steps of the process should run without user intervention or attention?
- ◆ At what step or steps in the process is human interaction necessary?
- ◆ At what step or steps is it necessary for Gentran Integration Suite to convert the document to the structure required by another system?
- ◆ What is the best method for starting the process?
- ◆ Do any of your applications need to process documents as soon as they are received?
- ◆ Should your applications send documents to a specified location or process when processing is complete?

Example Process with Manual and Automatic Activities

The following table shows activities in the example Customer Order Processing model (see *Identifying Business Needs* on page 21) could be automatic and which could be manual:

Step	Activities
1. Order entry	<ul style="list-style-type: none"> ◆ EDI orders enter system through the EDI VAN or communications adapter (Automatic).
2. Order processing	<ul style="list-style-type: none"> ◆ Orders are translated into a format the order processing system uses (Automatic). ◆ Order documents are sent to the order processing application (Automatic). ◆ Picktickets are produced and sent to warehouse (Automatic).
3. Order fulfillment	<ul style="list-style-type: none"> ◆ Orders are picked according to pickticket print-outs (Manual). ◆ Workers scan each item picked into a hand-held scanner, routing data to inventory control and order system for updates (Manual and Automatic). ◆ Shipping records and pickticket information sent to data processing (Automatic). ◆ Exceptions process started if needed (for example, item not on shelf, backordered, etc.) (Automatic).
4. Data processing	<ul style="list-style-type: none"> ◆ Order data is updated (Manual). ◆ Invoice data is generated (Automatic). ◆ Data sent to Accounts Receivable application (Automatic). ◆ Data sent to Inventory Control application (Automatic).
5. Inventory control	<ul style="list-style-type: none"> ◆ Inventory control system records updated (Automatic). ◆ Process for for augmenting inventory may be initiated (Automatic).
6. Accounts receivable	<ul style="list-style-type: none"> ◆ Accounts Receivable system generates invoice statements (Automatic). ◆ Invoices translated to EDI (Automatic). ◆ Invoices sent to customers through communications adapters (Automatic).

When you have noted the automatic and manual activities within your process, proceed to *Identifying Integration Points in Your Process* on page 25.

Identifying Integration Points in Your Process

Integration points are points at which documents within your process move from one system or application to another.

Identifying these points helps you to pinpoint the technological requirements related to your process model, which you need to know before you can configure the appropriate components to execute the work. Be specific in naming the applications that must be integrated.

Communication Adapters for Integration

Adapters perform activities that control the transmission of business process data between Gentran Integration Suite and external applications. For example, in a customer order process, you can use adapters that enable Gentran Integration Suite to move documents from the order processing system to the accounts receivable system. The documents first go through a translation step so that they are in a format that the accounts receivable system can use.

Carefully consider which external applications and systems you need to have communicate within your process model, then review the adapters Gentran Integration Suite has available to find the adapter that fulfills your need. If necessary, you can also create custom adapters using the Service Software Developer's Kit (SDK).

Example Integration Points Table

The following example table identifies the activities in which documents move from one system to another, within the example Customer Order Processing process (for information, see *Identifying Business Needs* on page 21), but this table does not name specific applications, as you should do for your actual plan:

Step	Activities	Integration Points/Adapters
1. Order entry	<ul style="list-style-type: none"> ◆ EDI orders enter system through communication adapters or the EDI VAN. 	Receipt through bootstrap adapter such as the File system adapter or an HTTP, AS2, or FTP adapter.
2. Order processing	<ul style="list-style-type: none"> ◆ Orders are translated into a format the order processing system uses. ◆ Order documents are sent to the order processing application. ◆ Picktickets are produced and sent to warehouse. 	<p>Translation from incoming EDI format into the format for:</p> <ul style="list-style-type: none"> ◆ The order processing system ◆ Any backend system for storing order entry records to which the data may be routed ◆ Any other systems used for tasks such as credit checks, approvals, etc. ◆ Pickticket system <p>For example, translation may involve an incoming EDI 810 being transformed into an SAP IDOC.</p>
3. Order fulfillment	<ul style="list-style-type: none"> ◆ Orders picked. ◆ Items scanned for data routing to inventory control and order system. ◆ Shipping records sent to data processing. 	<ul style="list-style-type: none"> ◆ Humans interact with pickticket data to fulfill orders. Use human interaction service to display pickticket data. ◆ Resume automation when humans electronically send shipping records to data processing systems. This involves adapter/translation steps from scanner data entry format into the format for other systems.

Step	Activities	Integration Points/Adapters
4. Data processing	<ul style="list-style-type: none"> ◆ Order data updated. ◆ Invoice data generated. ◆ Data sent to Accounts Receivable application. ◆ Data sent to Inventory Control application. 	<ul style="list-style-type: none"> ◆ Use B2B adapters such as the AS2 adapter, SOAP adapter, or HTTP and FTP adapters, to send data to appropriate applications and initiate steps 5 and 6.
5. Inventory control	<ul style="list-style-type: none"> ◆ Inventory control system records updated. ◆ Business process for augmenting inventory may be initiated. 	<ul style="list-style-type: none"> ◆ Bootstrap adapter, such as the HTTP Server adapter or FTP Server adapter, initiates inventory-related process.
6. Accounts receivable	<ul style="list-style-type: none"> ◆ Invoices are processed. ◆ Statements are produced. 	

After you have completed Stage 5, you are ready to plan the best structure for your process models. Proceed to *Organizing Your Business Process Models* on page 27.

Organizing Your Business Process Models

Using the GPM to create your business process models is simple to do, but requires some knowledge about structuring the physical design of your process models in a way that makes them easy to understand and maintain. In addition, your process models must use specific BPML activities in circumscribed ways.

BPML Activities Requirements

To construct viable business process models using the GPM, you must use certain BPML activities according to requirements related to their placement in your process models. Some activities must be used in pairs, to bracket other activities. That is, for a given activity, you must use one of these bracketing, or *parent*, activities at the beginning and one at the end. For example, before a series of activities in a business process model that you intend to run simultaneously, you must include the All Start BPML activity, and after the series, you must include the All End activity. For a complete list of available BPML activities depicted in the GPM, and the requirements related to using them, see *BPML Activities in Business Process Models* on page 35.

Organizational Concepts

The following table outlines concepts and structural elements related to designing business process models:

Concept or structural element	Description	When to use
Subflow	A subflow is a subset of activities in a business process model. In the GPM, a subflow is represented as an icon in the process model. You add the subflow icon to your process model and then define the components of the subflow. The subflow is invoked in sequence during process execution. Also see <i>Layer</i> on page 28.	Use subflows to streamline the display of your process model in the GPM by organizing a logical subset of activities in a single layer of the process model. This facilitates easy navigation among the separate parts, or layers, of your process model, while providing a simpler visual display of the process as a whole at the parent-layer level.
Subprocess	See <i>Subprocesses</i> on page 13. Invoke subprocesses from within a business process model using either the Invoke Subprocess service (sometimes called Invoke Business Process service) or the Spawn BPML activity	See <i>Identifying Subprocesses</i> on page 23. For help determining whether to use Spawn or Invoke Subprocess to invoke a subprocess, refer to the following tips: <ul style="list-style-type: none"> ◆ The Spawn activity asynchronously initiates another business process. ◆ The Invoke Subprocess service, as a Gentran Integration Suite service, is not portable to another BPML implementation, whereas Spawn – a standard BPML activity – is. ◆ Invoke Subprocess offers multiple configuration options, such as the ability to invoke the subprocess synchronously, run it inline, and so forth, that Spawn does not.
Layer	Layers are subflows contained within the business process model. The GPM enables you to chunk subsets of your business process model components into subflows, to streamline the depiction of the parent process' flow in the GPM workspace. You can display the subflow activities in a separate workspace.	Use the Layers tab in the GPM for easy navigation between the parent flow and any subflows.
Node	Each activity depicted in a business process model in the GPM is a node. You can view an alphabetical list of the nodes in each layer of a process model.	Use the Nodes tab in the GPM for easy navigation when viewing and modifying the activities that make up the layers in your process models.

Concept or structural element	Description	When to use
Decision point	Activity in a business process model at which defined rules specify the processing activity or path to take. This activity is depicted by the Choice BPML icon. The Choice activity is a parent activity to child activities that it initiates. For more information, see <i>Decision Points and Rules in Business Process Models</i> on page 34.	Include a decision point in a process model at a point where the continuation of the path must be determined according rules you define. The decision point can involve selecting one of two or more possible paths, or it may be part of a linear process that continues according to a rule.
Rule	Rules are directions you define at a decision point in a process to determine the processing path.	Use with Choice BPML activity for complex activities that require selection of one of multiple alternate activities. For more information, see <i>Decision Points and Rules in Business Process Models</i> on page 34 and <i>Defining and Assigning Rules and Conditions</i> on page 46.
Loop	A flow, typically a subflow, within a business process model that repeats itself.	Use when you need an activity to repeat. The Repeat BPML icon initiates the loop.
Child activities	Activities preceded in the business process model by a specific, structurally required BPML activity, such as Choice Start, Sequence Start or All Start.	Review the BPML activities descriptions for information about how to structure parent-child relationships in business process models. See <i>BPML Activities in Business Process Models</i> on page 35.
Parent activities	Activities in the process model that initiate child activities. For example, Sequence Start is a parent BPML activity to the services that follow it.	Review the BPML activities descriptions for information about the parent activities to use so that your models process correctly. See <i>BPML Activities in Business Process Models</i> on page 35.
OnFault	A BPML element you use to configure error handling in your process model. OnFault activities are associated with other individual activities.	Include OnFault activities when you need to enable a specific activity in a business process to recover from faults and allow the process to continue. An OnFault Group is a subflow.

Using Adapters to Start Business Processes

Some Gentran Integration Suite adapters can dynamically select and run business processes. These are known in Gentran Integration Suite as bootstrap adapters. These are generally input adapters, such as the File System adapter, Command Line Adapter 2, and FTP Client adapter.

When you plan your business process models, use bootstrap adapters to run independently of the process model and then dynamically start the process whenever possible. This strategy encourages reusability, which is one of the best practices recommended for creating your business process models.

Using a bootstrap adapter involves configuring an instance of the adapter, in which you indicate the business process it starts. You can also configure a schedule for running the adapter. For example, in a translation-related process, you can use different configurations of the File System adapter, set up to poll

different folders on systems for data input from different places, in different formats. Then, configure your business process model so that the different configurations of the adapter can call and start the same process to translate their data; the translator step determines on the fly which map to use to translate the format of the data it received.

Tying It Together

A good starting point for organizing a process model is the simple linear progression of activities that forms its basis. From there, add decision points, loops and subflows as needed, configure any activities that initiate subprocesses, and add OnFaults where appropriate. You might also find Xpath expressions and name-value pairs to be useful in the construction of your process models. For more information, see *Assigning Name-Value Pairs in a Business Process Model* on page 49. Always remember to follow the best practices for business process models.

When you have planned the structure of your process model, you must determine your document storage and tracking requirements and the appropriate settings you need to set for archiving and purging stored process data. For information, see *Maximizing Visibility Into Business Processes* on page 30.

Maximizing Visibility Into Business Processes

Gentran Integration Suite provides a variety of monitoring and tracking tools that aid visibility into both your active and completed processes.

As you plan your process models, considering the degree of access you need to detailed processing information is important, because you can configure related settings while you create your process models. Configure your processes and related resources to enable the visibility you need into processing details, along with the type of historical processing data you want to be able to access when you use monitoring and tracking tools.

Monitoring and Tracking Considerations

You can configure your business processes to enhance your business process monitoring and document tracking options in different ways. The tracking options you configure determine the level and quantity of tracking detail specific to documents, as opposed to business processes themselves, that is available in Gentran Integration Suite. Tracking selections may affect system performance. Consider the following:

- ◆ Using the document tracking flag at check-in – When you check in a business process, you have the option to enable or disable document tracking.

When you have enabled document tracking for a business process, the system carries tracking information with the document throughout the process, and persists the tracking information about the document regardless of the persistence level you configured globally for Gentran Integration Suite.

Document tracking in a business process allows you to use monitoring features to track processing history, view transaction details, obtain processing state information, and so forth, for documents.

By default, the document tracking option is disabled for all business processes in Gentran Integration Suite. Therefore, even if the global system tracking option is configured to enable tracking, your business processes will not provide the specialized document tracking unless you enable document tracking at check-in.

Using document tracking may affect system performance. Determine your document tracking and performance needs before creating your business process models.

- ◆ Setting Tracking Level for EDI services – For EDI-related business processes, you can boost performance without having to modify multiple business process models by changing the tracking level setting in envelope properties to either None or Basic, depending on the level of functionality you need. The only reason to adjust EDI tracking is for performance reasons. There is a trade-off in that you need must ensure that you still track all the data you need if you lower this level

If, instead, you use the tracking level service parameter to set this value, the tracking level service parameter setting overrides the enveloping properties setting.

- ◆ Using the Correlation service or name-value pairs for correlation searches – You can configure services to collect information for a specific name and value pair from either documents that pass through the business process, or from the business process itself. For information, see *Assigning Name-Value Pairs in a Business Process Model* on page 49.
- ◆ Invoking subprocesses to run inline – For tracking purposes, a subprocess initiates as a new business process with its own instance ID. However, you can opt to run a subprocess in inline mode by selecting inline as the invoke mode in the parameters for the Invoke Business Process service that calls the subprocess. This way, the subprocess steps are reported in tracking as part of the parent process. Recommended practice is to always use inline invoke unless you have a business need to run a separate process.

Persistence Levels and Archive and Purge Settings

When your business processes run, Gentran Integration Suite saves data according to the level of persistence you have set (see *Persistence Level* on page 61). You can access more or less saved information about the processes you run, depending on the degree of persistence you set (remember that enabling document tracking overrides persistence settings related to documents). The length of time that the persisted data is available to you depends on the lifespan of the defined process.

In the same manner that you schedule initiation of business processes, you can schedule the intervals at which you want Gentran Integration Suite to archive and purge the contents of the database. Configuring archiving and purging enables you to define the length of time, in days and hours, to retain the data persisted in Gentran Integration Suite. Performance considerations may influence your options, as a great deal of data in the database can slow operations. For more information, see *Life Span* on page 65.

Document Storage Considerations

Document storage settings determine the storage location you want for documents that process when the business process runs. The levels are:

- ◆ Database – Store documents in the database. Use this option for small documents or when clustering without a clustered file system.
- ◆ File System – Store documents in the file system. Use this option for large volume processing, such as documents that are over 10 MB in size, or when working with a large number of documents within a single business process (including any sub-processes it invokes).

Note: If you are using archiving, and you using the file system document storage method, you must handle purging the documents from your file system manually.

- ◆ System Default – Use the default option configured in the jdbc.properties file. As shipped, the database is the system default. You may have modified this to use the file system.
- ◆ Inherited – Store documents according to the document storage setting applied to the service that is invoking this business process. Use this option when the process is invoked by a bootstrap adapter and you want the document storage method to carry from the invoking adapter to the process.
- ◆ This option enables you to configure the process model to use the same document storage method as the bootstrap adapter that will invoke the process.

For additional information about the processing options you can select when you check in a business process, see *Business Process Model Processing Options* on page 59.

When you have completed Stage 7, you may benefit by filling out the *Planning Worksheet* for your business process model. The worksheet is a form you can use to note conceptual and technical details about a process model and refer to it during the actual modeling of your process.

Using Predefined Business Process Models

Gentran Integration Suite provides a variety of predefined business process models for your convenience. In addition, any business process model you have previously created and checked in essentially becomes a predefined business process. You can use a predefined process in the following ways:

1. Use it as a subflow in a new process model.

To do this, you must:

- ◆ Check out the predefined process and save it with a new name. This should be the name of the process model you are creating that will include the predefined process.
- ◆ In the GPM, open the file you checked out and saved.
- ◆ Create a subflow in the process model and add the predefined process to it.
- ◆ Model the rest of your business process related to the subflow.

- ◆ Test the model and check it in to Gentran Integration Suite.

Remember that after you use a process as a subflow in a new process, any changes you may make later to the originally copied process will not be reflected within the subflow. For instructions for adding a subflow within a process model, see *Adding Subflows in the GPM* on page 45.

2. Configure a step in your process model to execute a predefined process as a subprocess.

To do this, use the Invoke Subprocess service.

The benefit of using this technique is that if you later make changes to the predefined process, the process model that calls the predefined process as a subprocess uses the most current version.

For tracking purposes, a subprocess initiates as a new business process with its own instance ID. However, you can opt to run a subprocess in inline mode. Using this option, the subprocess steps are reported in tracking as part of the parent process. Running the process inline enables you to maintain reusability and inherited updating without the possibility of negatively affecting system performance by starting a new business process. You set the inline options in the parameters for the Invoke Business Process service.

3. Use it as a foundation for a new process.

To do this, you must:

- ◆ Check out the predefined process and save it with a new name. This should be the name of the process model you are creating.
- ◆ In the GPM, open the file you checked out and saved.
- ◆ Modify the configuration of the business process model as needed.
- ◆ Test the model and check it in to Gentran Integration Suite.

Locating and Identifying Predefined Business Process Models

To review predefined business process models and determine whether they will fulfill your needs, you must open the files for the models and review their components. To do this, check out the business process and open it in the GPM, or view the source BPML in the interface. You can open a read-only copy.

To view the source BPML in the interface:

1. From the **Business Process** menu, select **Manager**.
2. Under **List** select **ALL** and click **Go!**
3. Click the name of the business process for which you want to view the source , and review the source BPML in the window that displays.

For descriptions of several commonly used predefined business processes, see *Commonly Used Predefined Process Models* on page 85.

Note: The reference information for each service and adapter identifies any predefined business processes associated with it. You can use this information as a starting point for finding a useful predefined process.

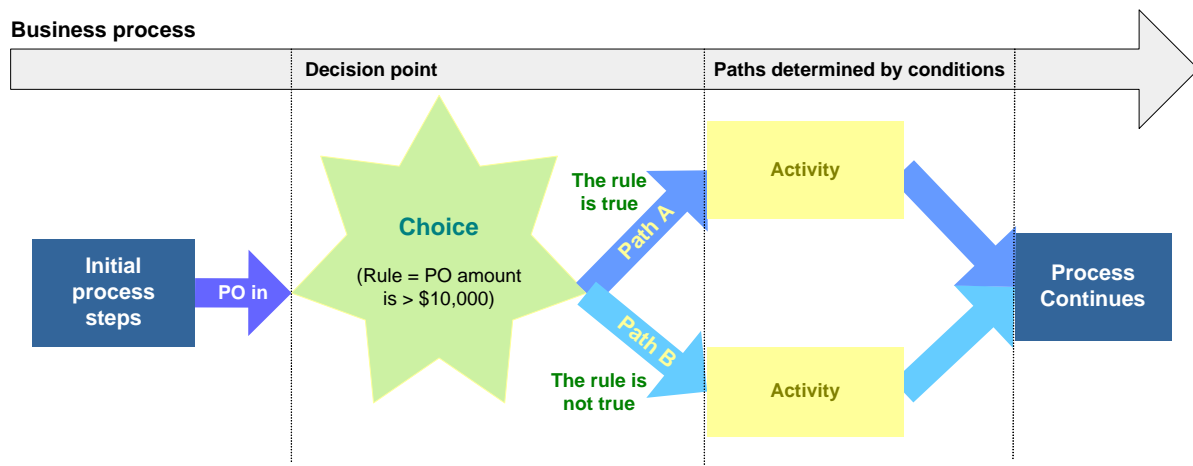
Decision Points and Rules in Business Process Models

To configure decision points in your business process models, you must:

- ◆ Define a rule upon which conditions will be based.
- ◆ Add the decision point in your process model.
- ◆ Assign the rule and related conditions to the decision point.

For example, for a decision point at which the flow of a business process model splits into two paths determined by the total amount of a purchase order, you define a rule indicating the total amount of the purchase order, such as: PO is greater than \$10,000.

Then, you must assign the rule to the decision point within your process model, and indicate the conditions by which the data progresses through each path from the decision point. For our example, if the total PO amount is greater than \$10,000 (true to the rule), take path A; and if the total PO amount is not greater than \$10,000 (not true to the rule), take path B. The following diagram illustrates the concept:



Rules and Conditions for XML Documents

When running a business process that processes XML documents, you must use XPath to describe rules and conditions for processing the XML document. Specifically, you must create XPath expressions that:

- ◆ Identify particular elements (or nodes) and their positions in both the input and output documents.
- ◆ Identify particular elements in the input document for copying into an output document or for further processing.
- ◆ Define any constraints of name-value pairs for elements.
- ◆ Calculate values that depend on other values.

The following table shows sample names and rules using simple syntax:

Name	Rule
rule1	X>10
rule2	X<=10
rule3	X<10

For information about assigning rules that require complex syntax, see *Defining and Assigning Rules and Conditions* on page 46.

BPML Activities in Business Process Models



Some BPML activities must be used in pairs, to bracket other activities. That is, for a given processing step in a business process model, you must use one of these bracketing activities at the beginning and one at the end. These are considered to be *parent* activities. For example, before each service in a business process model, you must include the Sequence Start BPML activity, and after the service you must include the Sequence End activity. Other BPML activities enable more complex activities.







- ◆ *Parent Activities Used in Pairs* on page 35
- ◆ *More Complex BPML Activities* on page 36

This topic explains requirements related to your use of BPML activities in business process models. Your processes may not run correctly if you do not use the BPML activities according to the requirements outlined here.

Parent Activities Used in Pairs


The following table describes the BPML icons in the GPM that represent activities used to bracket other activities:







Icon	Description
 Start	The Start activity indicates the beginning of a business process. Every business process model must begin with Start.
 End	The End activity indicates the end of a business process. Every business process model must finish with End.

Icon	Description
 All Start	<p>The All Start activity is a parent activity in a business process. All Start indicates that a business process is simultaneously executing all of the child activities contained within the parent activity.</p> <p>The All activity runs two or more complex child activities within a business process simultaneously. Because there are performance implications to using the All activity, use it only if you expect branches of your business process model to take significant amounts of time (in seconds or minutes) to complete (very few services take this long).</p> <p>Do not use the All activity to run two or more instances of the same subprocess simultaneously. The system will handle the proper load balancing.</p>
 All End	<p>The All End activity indicates that all child activities within the parent activity are completed. Use All End to finish All Start.</p>
 Choice Start	<p>The Choice Start activity is a parent activity in a business process. Choice Start indicates a decision and runs one child activity as a result of that decision. You must assign a name to Choice Start using the Property editor and assign rules using the Rule Manager.</p>
 Choice End	<p>The Choice End activity indicates that the child activity that ran as a result of the parent activity is completed. Use Choice End to finish Choice Start.</p>
 Sequence Start	<p>The Sequence Start activity is a parent activity in a business process. Sequence Start runs a series of child activities in the order in which they are listed within the parent activity. When using Sequence Start, you must assign a name using the Property editor.</p>
 Sequence End	<p>The Sequence End activity indicates that the last child activity in a series of child activities in the parent activity is finished. Use Sequence End to finish Sequence Start.</p>

More Complex BPML Activities

The following BPML activities are not used in pairs to bracket business process model components. Rather, they enable more complex operations within a business process. The following table describes the icons and activities:

Icon	Description
 Assign	<p>The Assign activity sets a value in the business process data that is equal to a fixed value. Inside an input or output element, the activity identifies a message it should receive from a participant or identifies the contents of a message it should send to a participant.</p> <p>Configuration parameters enable you to indicate a fixed value or input/output message.</p>

Icon	Description
 Consume	<p>The Consume activity reads a specific input message and stores that message in the business process data.</p> <p>Configuration parameters enable you to indicate a name for an instance of the Consume activity and the name of the message this activity should read.</p>
 Join	<p>The Join activity merges the results of a completed nested business process into the business process data.</p> <p>Configuration parameters enable you to indicate a name for the business process for which the Join activity is waiting.</p>
 OnFault Group	<p>The OnFault Group activity is a subflow used to associate a fault handling activity with a complex activity. Use it to recover from faults and allow the process to continue.</p>
 Produce	<p>The Produce activity generates a message from the business process data and delivers it to a designated participant or activity.</p> <p>Configuration parameters enable you to indicate the message and name of the receiving participant or activity.</p>
 Repeat	<p>The Repeat activity runs an activity or subflow one or more additional times.</p> <p>Configuration parameters enable you to indicate a name for an instance of the Repeat activity and the name of the activity the Repeat activity should run again.</p>
 Spawn	<p>The Spawn activity runs a subprocess.</p> <p>Configuration parameters enable you to specify a name for a copy of the Spawn activity within a process model, as well as the name of the subprocess to invoke.</p>

Creating Business Process Models

- ◆ *About Creating Business Process Models* on page 39
- ◆ *Process Summary of Creating a Business Process Model in the GPM* on page 39
- ◆ *Creating or Modifying a Business Process Model in the GPM* on page 41
- ◆ *When to Configure Services for Business Process Models* on page 43
- ◆ *Configuring Parameters in GPM Element Editors* on page 43
- ◆ *Adding XPath Expressions to Service Configurations in the GPM* on page 45
- ◆ *Adding Subflows in the GPM* on page 45
- ◆ *Defining and Assigning Rules and Conditions* on page 46
- ◆ *Modifying Annotations* on page 49
- ◆ *Assigning Name-Value Pairs in a Business Process Model* on page 49
- ◆ *Copying a Business Process Model for Use In the GPM* on page 50
- ◆ *Creating and Modifying Business Process Models In the Text Editor* on page 51
- ◆ *Creating a Subprocess* on page 52

About Creating Business Process Models

Gentran Integration Suite enables you to use different applications to create your business process models, as indicated in the following table:

Application	Description
Graphical Process Modeler (GPM)	<p>Web-deployed application included with Gentran Integration Suite. The GPM interacts directly with Gentran Integration Suite although it is an independent application. The GPM offers ease-of-use, including:</p> <ul style="list-style-type: none"> ◆ Process model validation and check-in integrated with Gentran Integration Suite ◆ Visually represented and manipulatable modeling components including Gentran Integration Suite services and adapters ◆ Configuration tools that do not require advanced BPML knowledge <p>Unless you have advanced knowledge of BPML, XPath, and ebXML syntax, use the GPM to create your business process models.</p> <p>For instructions for creating a business process model using the GPM, see <i>Creating or Modifying a Business Process Model in the GPM</i> on page 41. For information BPML activities used in the GPM, see <i>BPML Activities in Business Process Models</i>.</p>
Text editor application	<p>If you are experienced with using a text editor to create business process models in BPML code, you can use a text editor application. Gentran Integration Suite interface provides a built-in text editor in which you can enter the BPML code and validate and check in your process models. If you have written the BPML code in a text application external to Gentran Integration Suite, you can copy the text from the external application and paste it into Gentran Integration Suite text editor.</p> <p>For instructions to create a process model using a text editor, see <i>Creating and Modifying Business Process Models In the Text Editor</i> on page 51.</p> <p>Unless you have advanced knowledge of BPML, XPath, and ebXML syntax, use the GPM to create your business process models.</p>
Non-Gentran Integration Suite graphical editor application	<p>Process models created in other graphical editors may be imported into Gentran Integration Suite, provided they are exported in a standard XML format. The imported business process model, and some services, may require modification for correct execution in Gentran Integration Suite.</p>

Process Summary of Creating a Business Process Model in the GPM

The following table lists the stages in the process of creating a business process model using the GPM. The table provides links to additional information.

This process assumes that you have completed the planning steps described in *Business Process Model Planning Stages* on page 20 and reviewed *Business Process Modeling Best Practices*.

Stage	Description	For details, see:
1.	<p>Create the business process, including the appropriate service configurations.</p> <ul style="list-style-type: none"> ◆ If an existing service configuration meets your business needs for the process, use that service configuration. ◆ If no existing service configuration meets your business needs, create a new service configuration or determine whether you can edit an existing configuration to make it more generic for reuse. <p>Note: To avoid negatively affecting your other business processes, do not edit an existing service configuration until you understand its impact on your other business processes.</p>	<ul style="list-style-type: none"> ◆ <i>Creating or Modifying a Business Process Model in the GPM</i> on page 41.
2.	Configure the process to call subprocesses, if needed.	<ul style="list-style-type: none"> ◆ <i>Using Predefined Business Process Models</i> on page 32 ◆ <i>Identifying Subprocesses</i> on page 23
3.	Add subflows, if needed.	<ul style="list-style-type: none"> ◆ <i>Adding Subflows in the GPM</i> on page 45
4.	Configure any required and optional parameters for services and adapters in your process, such as metadata and message data.	<ul style="list-style-type: none"> ◆ <i>Configuring Parameters in GPM Element Editors</i> on page 43
5.	Assign rules and conditions to decision points, if needed.	<ul style="list-style-type: none"> ◆ <i>Defining and Assigning Rules and Conditions</i> on page 46
6.	Configure services to enhance monitoring and tracking capabilities, if needed.	<ul style="list-style-type: none"> ◆ <i>Assigning Name-Value Pairs in a Business Process Model</i> on page 49
7.	<p>Validate and save the business process model.</p> <p>For information, see <i>Business Process Model Validation</i> on page 55.</p>	<p>In Gentran Integration Suite interface, this step is included in two larger processes:</p> <ul style="list-style-type: none"> ◆ Creating a process model in the text editor – for information, see <i>Creating and Modifying Business Process Models In the Text Editor</i> on page 51. ◆ Checking in a business process model created in the GPM. For information, see <i>Checking In a Single Business Process Model in the GPM</i> on page 66. <p>In the GPM, you can validate a process model during the creation process or at any later time.</p>

Creating or Modifying a Business Process Model in the GPM

You can create an original business process model from scratch, or by modifying an existing process model and saving it with a unique name. If you are using an existing process model as the foundation for your new process, see the following topics for more information: *Using Predefined Business Process Models* on page 32 and *Copying a Business Process Model for Use In the GPM* on page 50.

Before using the GPM, review the GPM documentation.

Preliminary Configuration Tasks

You must perform the following configuration tasks *before* creating a process model:

- ◆ Create any necessary service configurations in Gentran Integration Suite. For information about service configurations and business processes, see *Service Configurations in Business Process Models* on page 15.
- ◆ Validate and check in any business process model you intend to invoke (use as a subprocess) from this process. Subprocesses must be checked in to Gentran Integration Suite in order to test this process.

Procedure

To create a business process model using the GPM:

1. Open the GPM.
2. In the GPM, from the **File** menu, select **New** to open a new document, or open the .bp file you want to use as a foundation for a new process model (checked out business process models are saved as .bp files).

Note: If you open a business process model that was created or edited in the text editor, the GPM displays the components in “autolayout” mode—the icons are aligned in a linear arrangement.

3. Open the stencils containing the service icons you need to create the business process model. For each stencil you need, from the **View** menu, select **Stencil** > <stencil name>.
4. Click the title bar for the BPML stencil to expand the stencil (the BPML stencil is open by default).
5. If you are creating this process model from scratch, add the **Start** icon to the business process workspace by dragging and dropping that Start icon onto the workspace.

To add an icon to a business process model, click to select the appropriate icon from within a stencil, and then, holding down the mouse button, drag the icon onto the workspace and release the mouse button.

6. Add other icons to the business process model as needed:
 - ◆ From the BPML stencil, add icons representing BPML activities and instructions required in your business process.

- ◆ From the stencils, add icons representing services, BPML activities and instructions, and integration points in your business process.

This step might include adding one or more subflows, as well as services to invoke other process models (subprocesses).

For more information, see the following topics:

- If you want to use a service that is not installed, contact your system administrator.
- *Adding Subflows in the GPM* on page 45.
- For how to invoke another process model from within this one, see *Using Predefined Business Process Models* on page 32.

7. If you are using a predefined business process model as the basis for creating this process model, remove any icons that you do not need to keep for the new model.
8. If you are creating this process model from scratch, add the End activity to the business process model.
9. Arrange the icons in the order that meets the requirements of your business process. Do not use the Autolayout tool unless you have arranged and linked your icons first (complete step 10), because it will line up the icons in a vertical row that takes time to reorganize appropriately.
10. To link the icons, click the arrow on the right side of the first icon and drag it to the arrow on the left side of the next icon. Repeat as necessary.
11. Customize descriptive annotations to your model, if desired. For instructions, see *Modifying Annotations* on page 49.
12. Assign any name-value pairs that represent data to locate in process data, as needed. For instructions, see *Assigning Name-Value Pairs in a Business Process Model* on page 49.
13. Assign rules and conditions to decision points, if needed. For instructions, see *Defining and Assigning Rules and Conditions* on page 46.
14. Configure parameters as needed for services, adapters and BPML activities. For instructions, see *Configuring Parameters in GPM Element Editors* on page 43.
15. From the **File** menu, select **Save** to save the business process model document (.bp file) to your client computer. If you have configured the GPM to validate automatically when you save a file, the system validates your process model now.

If this is a new process created from scratch, give the business process model a unique and meaningful name so that you can identify it easily.

16. In the **Save** dialog box, select a directory on your client computer and click **Save**.

After creating a business process model, at any time, you can open the file for your business process model and configure parameters, add subflows as necessary, assign rules and conditions, validate it, or otherwise modify it.

In order to test or run the process in Gentran Integration Suite, you must:

- ◆ Validate the process model's format. For information, see *Business Process Model Validation* on page 55.
- ◆ Check the model in to Gentran Integration Suite (your test or production environment, accordingly). For instructions, see *Implementing a Business Process Model* on page 54.

- ◆ Create and check in any other resources (such as Web templates, service configurations, maps, and so forth) that will be used by this model.

You can now check in and test your business process model. If needed, create a schedule for running this business process model.

When to Configure Services for Business Process Models

The services you include in your business process model may require configuration in order for your process to run correctly. You configure some parameters in Gentran Integration Suite interface (this is called creating a service configuration), some in either the interface or the GPM, and some exclusively in the GPM. A few require manual editing in the BPML code. The reference documentation for each service describes the parameters for the service and indicates where to perform the parameter configuration.

Generally, you can configure service parameters either during initial service configuration in Gentran Integration Suite interface, or during business process creation using the GPM. You can modify service configuration parameters at any time.

About Refreshing the Service Configurations in the GPM

If you are working in the GPM and you use Gentran Integration Suite interface to change the configuration for a service, you must select **View > Refresh Services** to update the GPM with your modified service configuration.

Configuring Parameters in GPM Element Editors

Configure service parameters in the GPM when you need to customize the service for the business process you are creating or modifying. To configure parameters:

1. In the workspace, double click the icon representing the service, adapter, or activity you want to configure.

The GPM displays the appropriate element editor for the selected element in the Element Editor pane beneath the workspace. For example, when you select the Assign icon, the Property editor opens, providing parameters to configure. For most services, the Service editor displays.

- Configure the parameters by entering the appropriate values in the related fields as needed.

For Service Editor only: The following table describes parameters in the Service editor. Some services and adapters have additional parameters that display in addition to the parameters described here, which are documented with the service information.

Field	Description
Name	Name of the service you are using in your business process model. You can customize the name, but, to facilitate your future reference, the best practice is to leave the name as-is or to include the service name in the new name you create. This is especially helpful should you need to identify business processes that may contain retired services at a later date.
Config	Name of the service configuration for this service that you want to use in this business process model. The field displays previously created service configurations for the selected service. After you select a service configuration, additional configuration parameters display.
Output Msg	Choose one of the following types of information: <ul style="list-style-type: none"> ◆ Message Only – Send only service configuration information to a service. ◆ Obtain Message first, then Process Data – Send service configuration information, name-value pair in the Service editor, and business process data. If duplicate information exists between the service configuration and business process data, the business process data overrides the service configuration information. ◆ Obtain Process Data first, then Message – Send service configuration information, name-value pair in the Service editor, and business process data. If duplicate information exists between the service configuration and business process data, the service configuration information overrides the business process data. <p>Note: When sending name-value pairs, you must indicate in the Service editor the name and value that describes the path for sending the name-value pairs.</p> <p>For more information about name-value pairs, see <i>Assigning Name-Value Pairs in a Business Process Model</i> on page 49. For information on Output Msg, see <i>What is Process Data?</i></p>
Input Msg	When a service sets variables in business process data (select one): <ul style="list-style-type: none"> ◆ Allow message write – Do not save the variables. ◆ Allow Process Data write – Save the variables. <p>For more information about Input Msg, see <i>What is Process Data?</i></p>

- Do you need to configure any XPath expressions for the service?
 - ◆ If Yes, see *Adding XPath Expressions to Service Configurations in the GPM* on page 45.
 - ◆ If No, proceed to the next step.
- Do any?
- Are you trying to configure a parameter that is read-only?
 - ◆ If Yes, complete the procedure in *Modifying Read-Only Parameters in the GPM* on page 45.
 - ◆ If No, proceed to the next step.

- When you are finished, you can close the Editor tab in the Element Editors pane by right-clicking the **Editor** tab and selecting **Close Editor Tab**. However, you do not need to close the pane. Any time you double-click a step in the process model, the display automatically changes to the appropriate editor for the selected icon. Likewise, if you validate the process model, the pane changes to display the system output messages.

Modifying Read-Only Parameters in the GPM

At times, you may need to modify service parameters but find that they display as read-only in the GPM Service editor. Some service parameters that are configurable in both Gentran Integration Suite interface and the GPM display as read-only in the Service editor if you configured them in the interface prior to working with them in the GPM.

The GPM enables you to override these preconfigured settings so that you can modify the parameters. To enable the parameters to be changed in the GPM:

- From the **Options** menu, select **Preferences**.
- Select the **Service Editor** tab.
- Select **Override Default Service Configuration Values** and click **OK**.

If the Service editor is already open when you complete these steps, you must exit the Service editor (right-click the **Editor** tab and select **Close Editor Tab**) and then re-display the Service editor for the change to take effect (double-click the service icon in the workspace).

Adding XPath Expressions to Service Configurations in the GPM

To add an XPath expression to a service configuration,

- Select the service in the Workspace and in the Service editor, click **Advanced**.
- Click **Add** to display the Name and Value columns.
- In the **Name** field, type a unique name for the rule you are creating.
- Click in the field under the **Value** column and select the **...** button.
- In the **Value of Null** dialog box, click the **A + B** button to display the XPath Expression Builder.

After closing the Service editor, point to the value column in the Advanced editor so that the expression button disappears. This action sets values.

- Create your expression, following the instructions for using the XPath Expression Builder.
- Click **OK**. See also *Assigning Name-Value Pairs in a Business Process Model* on page 49.

Adding Subflows in the GPM

When you create a subflow, you create a layer in the business process model. You can expand the view to work with the components of the subflow by using the Layers tab in the Navigation pane.

While a subflow layer provides more design space, it does not create a separately-saved business process model. A subflow is an integral part of the process for tracking purposes.

For information about planning subflows for your business process models, see *Organizing Your Business Process Models* on page 27.

To add a subflow:

1. From the **Tools** menu, select **Add Sub Flow**. The GPM adds the subflow icon to the workspace and expands the structure in the Navigation pane to show the subflow.
2. In the workspace, drag and drop the subflow icon to the appropriate location within the business process model.
You may need to remove the link that connects two previously arranged icons in order to insert the subflow icon. To remove the link, click the link and press **Delete**.
3. Link the icons accordingly.
4. To rename the subflow, select the subflow icon, right-click, and select **Properties** to display the Property editor. Type the name for the subflow in the **Value** field. When you click out of the Property editor, the subflow icon displays the new name in the workspace. Now you are ready to configure the subflow components.
5. In the Layers tab of the Navigation pane, click the subflow to display the workspace for the subflow. The GPM includes unlinked Start and End icons for your convenience.
6. Create a business process model for the subflow:
 - a. Add the icons that meet the requirements of your business process.
 - b. Arrange the icons.
 - c. Link each icon, including the Start and End icons.
 - d. Align the business process model.
 - e. Configure parameters for the icons in the subflow using the element editors as needed.
7. Do you want to continue working on the parent business process model (the one that the subflow is part of)?
 - ◆ If yes, in the Navigation pane, click the parent business process model icon to display to the parent process in the workspace.
 - ◆ If no, save the business process model or validate and save the business process model.

Defining and Assigning Rules and Conditions

To include rules and conditions at decision points in your business process models, you must complete two procedures:

1. Define rules. These may be simple or complex. For instructions, see:
 - ◆ *Defining Simple Syntax Rules* on page 47
 - ◆ *Defining Complex Syntax Rules Using XPath* on page 47

2. Assign the rules and related conditions in a business process model. After defining your rules, or if your rules are already created, see *Assigning Rules and Conditions in Business Process Models* on page 48.

These procedures assume you have planned your business process model and created its core structure in the workspace in the GPM. For a conceptual overview, see *Decision Points and Rules in Business Process Models* on page 34.

Defining Simple Syntax Rules

1. From the **Tools** menu, select **Rule Manager**.
2. Click **Add**.
3. In the **Name** field, type a name that describes the rule.
For example, if you are creating choice within your process model that determines what step to take if the total amount in a purchase order is greater than or less than \$10,000, you might define a rule named **TotalPO**.
4. In the **Expression** field, type the syntax, and then click **OK**.
Following the example in step 3, the expression might be **document/total > 10000**.
5. Repeat these tasks until you finish defining simple syntax rules.

You can now assign rules you have created to steps in a business process model. See *Assigning Rules and Conditions in Business Process Models* on page 48.

Defining Complex Syntax Rules Using XPath

1. From the **Tools** menu, select **Rule Manager**.
2. Click **Add**.
3. In the **Name** field, type a name that describes the rule.
For example
4. To display the XPath Expression Builder, click the **(A + B)** button to the right of the **Expression** field.
5. Display the expression type you want to perform, double-click the function to add it to the **Expression** field, and then type values to complete the expression type as needed.
6. Display the token set attribute to complete the function of the expression type and double-click the attribute to add it to the **Expression** field.
7. Repeat steps 1-6 until you finish defining this XPath expression and click **OK**.
8. Repeat steps 3-7 until you finish creating rules defined by complex XPath.

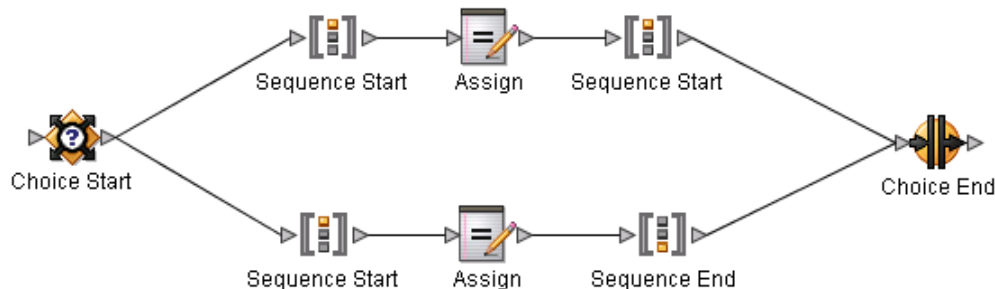
You can now assign rules you have created to steps in a business process model. See *Assigning Rules and Conditions in Business Process Models* on page 48.

Assigning Rules and Conditions in Business Process Models

In the process of creating the core structure of your business process model in the workspace, you may have already completed steps 1 and 2.

To assign rules:

1. To a business process model open in the workspace, add the decision point to which you will assign rules, along with related icons for each possible processing sequence (you may need to remove the link that connects two icons in order to insert the new icons):
 - a. At the appropriate point in the process model, add the following icons:
 - ◆ **Choice Start** and **Choice End**
 - ◆ Two copies of **Sequence Start** and **Sequence End**
 - ◆ Icons for the activities required in each sequence. For example, two copies of the Assign icon.
 - b. Arrange and link the icons. For example:



2. Configure the parameters for the service in each sequence as necessary (for example, the Assign activity icons). For instructions, see *Configuring Parameters in GPM Element Editors* on page 43.
3. Rename the following icons as indicated:
 - ◆ Rename **Choice Start** to describe the decision activity. For example, CheckTotalPO.
 - ◆ Rename the **Sequence Start** icons to describe the condition related to each flow path. For example, one might be Total10000 and the other might be TotalNot10000.
4. Double-click the edge (link line) between **Choice Start** and one of the **Sequence** icons to display the Edge editor.
5. In the Edge editor, click **Add** to display the name and value columns.
6. In the Name column, click in the field to display a list of previously-created rules, and select the appropriate rule. This will be the rule name displayed with the selected edge in the business process model.
7. In the Value column, select **True** or **Not true** for the selected rule.

When you click in the workspace, the rule name displays on the edge in the process model.
8. Do you need to assign more rules to this edge?
 - ◆ If Yes, repeat steps 5 - 7 until you finish assigning rules to this edge.

- ◆ If No, repeat steps 4 - 7 for other edges to which you must assign rules.

Modifying Annotations

You can customize annotative descriptions of components in your process model. Though you cannot delete the default annotation for an icon, you can modify it to provide descriptive information that is useful to you.

To customize an annotation:

1. In the workspace, select the icon for which you want to customize the annotation.
2. From the **Edit** menu, select **Annotation**.
3. In the **Annotation** dialog box, type the annotation, and click **OK**.

Deleting an Annotation

You can delete a custom annotation by clearing it, but the GPM automatically replaces it with the default system annotation for the icon. To delete an annotation:

1. In the workspace, select the icon for which you want to delete a custom annotation.
2. Right-click to display the menu and select **Annotation**.
3. Click **Clear**, and then click **OK**.

Assigning Name-Value Pairs in a Business Process Model

Assigning name-value pairs to business processes and documents enables you to easily search for and monitor the business process and related documents. Name-value pairs, which are called *correlations* in Gentran Integration Suite, enable a business process to identify corresponding elements (or nodes) and their positions in both the input and output documents.

You can use any of the following methods to assign name-value pairs:

- ◆ Applying the provided name-value pairs provided in the GPM to a service
- ◆ Creating your own unique name-value pairs for a service
- ◆ Implementing the Correlation service to enable Gentran Integration Suite to generate correlations, according to a business process, or according to documents exchanged as a result of a business process that ran.

Assigning Provided Name-Value Pairs in the GPM

To assign name-value pairs to a service:

1. To display the Service editor, select the icon representing a service or adapter and click **Properties**.

2. Under the **Value** column, select the value that describes the name-value pair corresponding with elements in both the input and output documents.

Creating Unique Name-Value Pairs

To create unique name-value pairs for a service:

1. To display the Service editor, select the icon representing the service or adapter and click **Properties**.
2. Click **Advanced** to display the Advanced Editor.
3. Click **Add** to display the Name and Value columns.
4. Under the Name column, type a unique name to describe the value in the field.
5. Under the Value column, type a character or XPath expression that describes the value in the field.

Note: To use the XPath Expression Builder to help you create an XPath expression, click the ellipses button to display the **Value of Null** dialog box, and then click the button to the right of the Value field to display the XPath Expression Builder. See *Adding XPath Expressions to Service Configurations in the GPM* on page 45.

6. Under the Use XPath? column, enable the field to indicate that you are using an XPath expression for the value, and then click **Add**.
7. Repeat steps 1 - 6 until you finish creating name-value pairs for this service or adapter.

Using the Correlation Service

When you use the Correlation service in a business process, Gentran Integration Suite generates correlations for business processes that completed document exchange while running. After running the business process, you can then use the generated correlations when you search for a business process or document results in Gentran Integration Suite.

Before using the Correlation service, you must determine whether you want Gentran Integration Suite to generate correlations according to the results of business processes or document exchange.

Copying a Business Process Model for Use In the GPM

At times, you may want to copy a business process model and use it as the foundation for a new one. To copy a business process model:

1. Check out the business process you want to copy and save it with the name of the new process model you are creating.
2. In the GPM, open the business process model you checked out.
3. Modify the business process model as needed.
4. Validate and check in the new process model.

5. If you locked the original business process model at checkout, and you need it to be available in Gentran Integration Suite, check it back in.

Creating and Modifying Business Process Models In the Text Editor

Creating a business process model using a text editor rather than the GPM requires advanced knowledge of BPML, and XPath. Unless you are an advanced user, use the GPM to create your process models.

The process for creating a business process using a text editor in Gentran Integration Suite includes validation and check-in of the process model. The following procedure details the steps:

1. From the **Business Process** menu, select **Manager**.
2. Do one of the following:
 - ◆ To create a new process model, next to **Create Process Description**, click **Go!**
 - ◆ To modify an existing process model, use the Search or List feature to locate the model to modify, select Source Manager for the process, and click **Edit**. Go to step 5.
3. Type the name to identify the business process you are creating. The name must not contain spaces. See *Process Name* on page 59.
4. Under **Select an input mode for defining the new process**, select **Business Process Text Editor** and click **Next**.
5. Type a description that helps identify the business process you are creating or modifying. See *Description* on page 59.
6. In the **Business Process** field, either type, or copy and paste, BPML code.
7. Click **Validate** to validate the BPML syntax (you cannot enable a business process until it is validated).

A system message indicates whether the process is valid or invalid.
8. Is the process valid?
 - ◆ If No, correct invalid BPML code and repeat step 7 as necessary. You can view error information by clicking the link in the error message.
 - ◆ If Yes, click **Next**.
9. Select **Document Tracking** if you want to track the progress of the document when the business process runs. See *Document Tracking* on page 59.
10. Select **Set onfault processing** if you want the business process to run its onFault protection if it encounters an error when it is running. See *Set onfault processing* on page 60.
11. In the **Set Queue** field, indicate the level of queue, previously defined to allocate resources, at which to place this business process for processing. See *Set Queue* on page 60.
12. Indicate the level of persistence to retain data that makes up the business process. See *Persistence Level* on page 61.

13. Indicate the level of event reporting for this business process. See *Event Reporting Level* on page 62.
14. Indicate the level of recovery for this business process if the business process should halt during execution. See *Recovery Level* on page 62.
15. Indicate the type of document storage for documents that process when the business process runs. See *Document Storage* on page 62.
16. Click **Next** and select deadline settings for the business process to run. See *Deadline Settings* on page 64.
17. Click **Next** and indicate the life span (archiving information) for the level of persistence data you are retaining. See *Life Span* on page 65.
18. Click **Next**.
19. To enable the business process, ensure that **Enable Business Process** is selected.
If you do not enable the business process, you cannot run it in Gentran Integration Suite without first enabling it later. For instructions to enable it independently of the check-in procedure, see *Enabling a Disabled Business Process* on page 83.
20. If you want to create a permission associated with the business process model, select **Create Permission**, and then click **Finish**.

You can now test the business process model. If needed, create a schedule for running this business process model.

Note: If you edit a file in BPML and then open the file in the GPM, the model displays in Autolayout mode; it does not keep its original GPM layout, if applicable, after its source file has been manually edited.

Creating a Subprocess

The following steps describe the process of creating a subprocess:

1. Follow the instructions for creating a business process model, remembering that a subprocess should comprise a simple, single unit of work.
2. Validate the subprocess.
3. Check the process model in to Gentran Integration Suite.
4. Test the subprocess, monitoring the activity. If needed, modify the process model and repeat steps 1-4 as needed.
5. Create a business process model that calls the subprocess (this is the parent business process model). The Invoke Business Process service enables you to call the subprocess from the parent process and specify the processing mode (asynchronous, synchronous, or inline).
6. Validate and check in the parent business process model.
7. Test the parent business process model, monitoring the activity. If needed, modify the process model and repeat this step as needed.
8. Run the parent business process as needed.

Using the OnFault Group in the GPM

The GPM contains an OnFault Group in the BPML stencil. The OnFault Group may contain one onFault element or many onFault elements. In the Property Editor there is an Add button that will add additional elements as needed. Configure an onFault element by:

1. From the workspace, select the OnFault Group icon where you want to view an element editor.
2. To access the element editor where the onFault element can be modified or additional onFault elements can be added to the OnFault Group, select Properties from the Edit menu.
3. Click in the Name or Error Value fields
4. Click the view button.
5. The Workspace will contain an OnFault Start and an OnFault End.
6. Add the process you want to run when the fault specified in the Error Value field occurs.

Note: The Error Value field must match an error in GIS for that element to execute. If you leave the Error Value field blank, all errors will execute that branch unless the specific error has its own element. The first onFault element could have a specific value and the second element could be blank. That way the specific error would execute the first element and all other errors would execute the second branch.

Implementing a Business Process Model

- ◆ *About Implementing Business Process Models* on page 54
- ◆ *Managing Business Process Model Versions* on page 55
- ◆ *Business Process Model Validation* on page 55
- ◆ *Creating a Business Process Definition* on page 57
- ◆ *About Checking in Business Process Models* on page 57
- ◆ *Testing the Business Process Model* on page 58
- ◆ *Business Process Model Processing Options* on page 59
- ◆ *Checking In a Single Business Process Model in the GPM* on page 66
- ◆ *Checking In Multiple Business Process Models in the GPM* on page 68
- ◆ *Checking In a New Version of a Business Process Model in the GPM* on page 69
- ◆ *Checking In a Business Process Model Using the Text Editor* on page 70
- ◆ *Checking In a Business Process Model Using the Text Editor* on page 70
- ◆ *Checking In a New Version of an Existing Business Process Version in Gentran Integration Suite* on page 72
- ◆ *Testing a Business Process Model* on page 73

About Implementing Business Process Models

After creating or modifying a business process model, you must perform implementation steps before running it in Gentran Integration Suite. The implementation process involves:

1. Validating the process model. For information, see *Business Process Model Validation* on page 55.
2. Creating a definition of the process model in Gentran Integration Suite. For information, see *Creating a Business Process Definition* on page 57.
3. Checking the process model in to Gentran Integration Suite. For information, see *About Checking in Business Process Models* on page 57.

4. Testing that the process works as planned. For information, see *Testing the Business Process Model* on page 58.

Use a test environment for checking in and testing your processes before you run them in your production environment.

Because implementing a process model often involves working with revised versions of pre-existing models, before you begin, review the information about version management. See *Managing Business Process Model Versions* on page 55.

Managing Business Process Model Versions

Version management is an important concern related to implementing your business process models. As you make multiple changes to existing process models and create variations of a process model, you need to be certain that the process model that runs is the appropriate version.

The first time you check in a business process, the data you enter creates a business process definition—a uniquely named copy of the process model to be stored in Gentran Integration Suite. The business process model stored in Gentran Integration Suite is independent of any .bp file of the process that you may have saved in a local directory.

At any time, you can open an existing process model, modify and save it, and then either check in the new version to Gentran Integration Suite, or save the modified copy of the process in Gentran Integration Suite as a new process altogether. All previously checked-in versions of business process models continue to be stored in Gentran Integration Suite. This enables you to revert to using an older version should the need arise.

For more information, see *Modifying and Managing Business Process Models* on page 75.

Business Process Model Validation

Gentran Integration Suite BPML validation feature checks for proper BPML syntax in your process models and looks for faulty design, to help you avoid common pitfalls that lead to processing problems. Your business process models must pass validation before you can enable them for use in Gentran Integration Suite.

The following table describes the checks performed when you validate a business process model in Gentran Integration Suite:

Validation Check	Description
BPML syntax	Verifies that the BPML comprising a business process model is valid XML.

Validation Check	Description
ForEach/Invoke Loop	<p>Verifies that a faulty document looping structure is not part of the business process model. The problem loop contains:</p> <ul style="list-style-type: none"> ◆ A For Each Document service ◆ An Invoke Business Process service <p>This loop structure will fail validation unless the loop <i>also</i> contains:</p> <ul style="list-style-type: none"> ◆ An Assign activity to a message_to_child element that makes a specific reference to which document to use for the next cycle ◆ A Release service targeting the value "message_to_child" (this keeps unneeded copies of documents from being created) <p>OR</p> <ul style="list-style-type: none"> ◆ One or more assign elements to message_to_child in the Message To Service of the Invoke Business Process service (in this case, the Release service is not needed) <p>An improper document loop structure unduly taxes the database and can lead to production down scenarios, particularly if you are processing large files.</p> <p>If the validation check finds this structure, it returns one of the following errors, depending on the structure:</p> <ul style="list-style-type: none"> ◆ Node Validation Error: Activity Name: Invoke Business Process Service Validation Message: Document loop contains an InvokeBusinessProcess service without an assign to message_to_child. ◆ Node Validation Error: Activity Name: foreachSplitDoc Validation Message: message_to_child not guaranteed to be released in document loop.

You can validate your business process models in both the GPM and Gentran Integration Suite interface.

◆ Validation in the GPM

In the GPM, you can save a business process model at any time and then validate it later, or you can configure the GPM to validate every time you save the file. By default, the GPM prompts you to validate a model when you save it (to disable or enable this behavior, select **Preferences** from the **Options** menu).

Because you may check in unvalidated process models or processes containing validation errors using the GPM, be sure to validate before check-in. Processes that are checked in but not valid are not executable. For more information, see *Checking In a Single Business Process Model in the GPM* on page 66.

◆ Validation in Gentran Integration Suite Interface

In Gentran Integration Suite interface, validation is part of the procedure for either checking in a process model created in the GPM or creating a business process model in the text editor.

For more information about the types of check-in procedures, see *About Checking in Business Process Models* on page 57.

Validating Pre-existing Business Process Models

Any time you have upgraded your Gentran Integration Suite software and you want to re-validate previously implemented business process models using the upgraded application, simply check the process models out and check them back in again.

Creating a Business Process Definition

A business process definition is the name and some additional processing instructions that you assign to a business process model when you check it in to Gentran Integration Suite for the first time.

You create the business process definition during the check-in process:

- ◆ During the Add (check in) process in the GPM
- ◆ When you create a new process definition in Gentran Integration Suite interface

Create a definition only the first time you check in a business process model. Then, any time you check it out later and check it back in again, check in a new version of this definition, unless you want to save another copy of the business process model in Gentran Integration Suite, with a new name.

The name you assign in the process definition is the identifiable name used to indicate the process throughout Gentran Integration Suite interface and Gentran Integration Suite and GPM Source managers.

About Checking in Business Process Models

You can check in a business process model from within the GPM interface or through Gentran Integration Suite interface.

Both Gentran Integration Suite interface and the GPM provide a Source Manager feature you use to check in a business process. The two Source Managers differ slightly, but both enable you check in new business process definitions and new versions of previously checked-in process models. Both display the current list of business process models and versions.

Each time you check in a business process, you create a version of the business process, either the first version of a new process model, or a new version of a previously checked-in business process model. Gentran Integration Suite saves each checked in version so that you retain a copy of every iteration of a process model that you check in. You cannot check in a version of a business process that is checked out and locked (protected) by another user.

The check in procedure differs depending on your goal and the application you are using. The following table describes the options and provides a link to appropriate instructions:

Type of Check-In	For Instructions, see:
Check in a new business process model in the GPM Note: This applies to both original process models and any modified models you want to check in as a new process rather than as a version of an existing one)	<i>Checking In a Single Business Process Model in the GPM</i> on page 66
Check in new version of a business process model in the GPM	<i>Checking In a New Version of a Business Process Model in the GPM</i> on page 69
Check in multiple business process models in the GPM	<i>Checking In Multiple Business Process Models in the GPM</i> on page 68
Check in new business process model in Gentran Integration Suite interface Note: This applies to both original process models and any modified models you want to check in as a new process rather than as a version of an existing one.	<i>Checking In a New Business Process Model Using Gentran Integration Suite Interface</i> on page 70
Check in new version of a business process model in Gentran Integration Suite interface	<i>Checking In a New Version of an Existing Business Process Version in Gentran Integration Suite</i> on page 72
Check in a new or modified business process model from the text editor in Gentran Integration Suite	<i>Checking In a Business Process Model Using the Text Editor</i> on page 70

Testing the Business Process Model

Test your business process model before using it in your production environment. The validation step verifies only that the BPML structure is valid, it does not indicate invalid parameters or guarantee that the process works, so testing is important.

Use a test environment if possible. If Gentran Integration Suite reports errors, make appropriate corrections to the business process model or the service and adapter configurations in it. Retest the business process until it is working as needed in the test environment.

When you are ready to implement the business processes in your production environment, you can export the resources from the test environment and import them into production. The ability to tag resources can expedite the automation of the export and import process.

Remember that the flexibility of Gentran Integration Suite often enables you to choose from among many options to accomplish a given task. Test cycles will help you determine the most efficient methods for your needs.

For instructions for testing a business process model, see *Testing a Business Process Model* on page 73.

Business Process Model Processing Options

When you check in a business process model, the system prompts you to set a variety of processing options. You can configure archiving of related data, document storage and tracking, persistence levels, and many other features, according to your business needs. If you are using a clustered installation of Gentran Integration Suite, you can specify the specific node you want the process to run on.

Your selections may affect system performance, error handling, amount and type of data available for monitoring events, and so forth, so be sure to review the options described here before you check in a business process model, and determine which selections are appropriate for your needs (you can modify them as needed later by re-checking in the process model).

Remember that some processing options can be set at the global level for the entire system and some within the BPML for a process model. These settings may or may not override settings you make at the business process level, depending on the options you choose. The field descriptions indicate which settings override other settings.

Process Name

Field	Description
Process Name	Type a name that identifies the business process model. This is the business process definition name stored in Gentran Integration Suite.

Description

Field	Description
Description	Type a description that helps identify the business process you are creating. This is stored in Gentran Integration Suite with the version of the business process model you are checking in. If the process model is an updated version of a business process, you may want to note what you changed in this version, such as "added onfault step," to help with future differentiation between checked-in versions.

Process Levels

Field	Description
Document Tracking	Select this option if you want documents involved in this process model to be trackable according to the document tracking settings you have configured. Document tracking at the business process level is disabled by default, and this setting overrides the global document tracking setting. If you are not using Gentran Integration Suite document tracking features, leave the option disabled, to reserve system resources for other tasks.

Field	Description
Set onfault processing	Select this option to the enable on-fault activity specified in the process to immediately execute in the event of a system error.
Set Queue	Gentran Integration Suite enables you to set performance optimizations by queue, defining queue levels the system uses to allocate resources. Select the queue level that you want for this business process model for processing. The default value is 4.
Enable Async Start Mode	<p>Asynchronous initiation is selected by default. Starting business processes asynchronously is recommended. Asynchronous mode is standard Gentran Integration Suite processing, wherein the business process is placed in queue and processed.</p> <p>Note: <i>Always</i> use asynchronous mode, with one possible exception. If you are running this process in Sync mode, you must use synchronous start. You may be using Sync mode if, for example, you are using the MSMQ adapter, set to Embedded mode. Clear this check box to use synchronous mode. Sync mode functionality is limited in that your Persistence Level is Zero by default, and you cannot, therefore, manually restart or resume the process.</p>
Enable Transaction	<p>Select this option to instruct Gentran Integration Suite to treat the entire process as a single transaction so that either all of the steps complete, or, in the event of an error, none of them do. When an error occurs, no data is committed; data returns to its pre-process state.</p> <p>Note: Enabling transactions applies only to services that support transaction mode. See the reference information for specific services to determine whether this option is supported.</p> <p>By default, this transaction mode is not enabled.</p> <p>Note: If transaction management is already built into the process model (the model includes Start and End Transaction services), do not select this option or the process will fail.</p>
Category	You can optionally enter a category name to which this process model belongs, creating the category. The category does not affect processing; categories are for future product enhancements.

Field	Description
Persistence Level	<p>The persistence level options enable you to specify, at the business process level, the types of data to retain in the database for the process whenever it runs. Persisted data can be crucial to process recovery in the event of errors and is useful for monitoring and tracking activities, including generating status reports. Persisted data may include any of the following types of data:</p> <ul style="list-style-type: none"> ◆ Status information for the steps in the process, which is comprised of: <ul style="list-style-type: none"> - General status information for the steps (start and stop time, step name) - Error information for failed steps - Data describing the start and stop conditions of the process ◆ Process data ◆ Documents associated with the process <p>The types of data persisted for a process depends on the activities the process involves (such as whether the process has documents associated with it) and your persistence level settings.</p> <p>Persistence can also be set globally (at the system level) for all processes; by default this is set to FULL persistence, although it may have been customized for your installation. If your installation uses the default FULL setting for the system, you generally do not need to change persistence at the business process level unless you are seeking performance improvements. For the process model you are checking in, your selection here overrides the global persistence level set in the properties file.</p> <p>Note: Two exceptions may affect your persistence selection. First, remember that some services support only a limited selection of persistence settings, regardless of the level of persistence you assign to the process model. Second, any persistence overrides configured in the BPML for steps in the process model override the setting you make here for the specified step or steps.</p> <p>Choose the option that provides the type of data you need for monitoring, tracking, and recovery in the event of a failure. Remember that persisting data can slow system processing by filling up the database. Consider your archive and purge settings in addition to the amount and type of data you intend to persist.</p> <p>For a detailed description of persistence setting options, see <i>Persistence Options</i> on page 63.</p>

Field	Description
Event Reporting Level	<p>Select the level of events to generate for this process. Events are actions that occur within the system, such as adapters starting and stopping, business process status or state changes, and errors and exceptions, that are configured to generate event data. Gentran Integration Suite uses events for various features, such as event-driven notifications.</p> <p>Note: Full event reporting is recommended to ensure that all of your system features operate correctly. Minimal or no event reporting settings are options that can improve system performance in some specialized circumstances; however, you should use these options only upon recommendation from Sterling Commerce Customer Support, when Support has determined that features dependent on events are not needed.</p> <p>The levels are:</p> <ul style="list-style-type: none"> ◆ Full – Generate all configured events for the business process, including the business process start and end time, start and end times for all services or adapters running as a result of this business process, and any resulting errors and exceptions. This is the default and recommended selection. ◆ Minimal – Generate events for the business process, including the business process start and end time and any resulting errors and exceptions. ◆ None – Do not generate any event reporting.
Recovery Level	<p>Select the level of recovery for this business process if the business process should be interrupted during execution. The levels are:</p> <ul style="list-style-type: none"> ◆ Auto Resume – Resume the business process at the last point at which the business process was persisted. ◆ Auto Restart – Terminate the current business process and restart it from the beginning. ◆ Terminate – Terminate the business process. ◆ Manual – Take no action automatically. With this option, you must resume or restart the business process manually. This is the default selection.
Document Storage	<p>Select the document storage type for document payload data written when the business process runs. The options are:</p> <ul style="list-style-type: none"> ◆ Database – Store documents in the database. Use this option for small documents or when clustering without a clustered file system. ◆ File System – Store documents in the file system. This option may be best for large documents (over 10 MB). Using this method, you must handle archiving and purging the documents from your file system. ◆ Archiving and purging from the file system may require special handling. ◆ System Default – Use the option configured in the <code>jdbc.properties</code> file. This is the default document storage setting for process models. As shipped, Database is the document storage type configured in the <code>jdbc.properties</code> file; it may be modified for your installation to use the file system. ◆ Inherited – When one document is created as a result of another, the new document uses the previous document's storage type.

Field	Description
Enable BP Execution Settings	<p>This option displays only when you are using a clustered Gentran Integration Suite environment. Select this option to display the available choices for specifying the node to run the process on. If you do not specify a node, the system uses any available node. To select a node:</p> <ol style="list-style-type: none"> 1 In the Select Node field, select the node on which you want the process to run. 2 In the Execution Node Specific field, specify whether the process must run on the selected node or can use others. Options are: <ul style="list-style-type: none"> Preferred Node – Run the process on the selected node unless the node is unavailable (inactive for some reason). Mandatory Node – Always run the process on the selected node (if the node is unavailable for some reason, the process will fail). <p>Note: The Execution Role Specific field is reserved for future use.</p>

Persistence Options

The following table describes the persistence options and indicates the types of data persisted for each:

Persistence Level	Description	Start and Stop Steps Data	Services Steps Status Data	Errored Steps Data	Process Data	Docs
Full	Retains all data for this business process model. This selection uses the most system resources of any persistence level setting.	Yes	Yes	Yes	Yes	Yes
Step Status - Engine May Override	<p>This is the recommended persistence level for most process models because it helps optimize performance while providing a level of recovery suitable for most business needs.</p> <p>* Persists process data and documents for service steps according to the persistence level supported by the service in the step.</p>	Yes	Yes	Yes	Possibly*	Possibly*
BP Start Stop - Engine May Override	<p>Choose this level if you know you do not need persisted status data for successful processing. Because service level settings override the selection, you may have additional data in a recovery scenario.</p> <p>* Persists process data and documents for service steps according to the persistence level supported by the service in the step.</p>	Yes	No	Yes	Possibly*	Possibly*

Persistence Level	Description	Start and Stop Steps Data	Services Steps Status Data	Errored Steps Data	Process Data	Docs
System Default	This is the default selected persistence level. * Persists data according to the global persistence setting configured in the properties file.	Possibly*	Possibly*	Possibly*	Possibly*	Possibly*
Step Status Only	Choose this level if you need only status information for each step and your recovery needs do not depend on additional data being saved.	Yes	Yes	Yes	No	No
BP Start Stop Only	Choose this level if your recovery needs do not depend on data being saved for the processing steps.	Yes	No	No	No	No
Zero	This level does not persist any business process data you for recovery or process tracking. Choose this level only if you are certain you will not need the data. Note: Zero persistence is available only if the process is running in Synchronous start mode.	No	No	No	No	No
Error Only	Choose this level if you do not need tracking data for your process when it is successful and your recovery does not depend on process step data being saved.	Only in case of errors	Only in case of errors	Yes	Only in case of errors	Only in case of errors

Deadline Settings

Deadline settings indicate how much time the process may take to complete.

Field	Description
Do not set deadline	Run the business process without a deadline. This is the default selection. To run the business process on a deadline, clear the check box.
Complete by Deadline	Enables you to specify a deadline time, in hours and minutes, by which the business process must complete after it starts. If the deadline is reached before the process completes, the system generates a deadline event as the process continues to run.
First Notification: Hours and Minutes	Enables you to configure sending of a notification to the administrator at a specified number of hours and/or minutes after a business process starts, if the process has not completed.
Second Notification: Hours and Minutes	Enables you to configure sending of a second notification to the administrator at a specified number of hours and/or minutes after a business process starts, if the process has not completed.

Life Span

Use these options to:

- ◆ Indicate the length of time that data pertaining to each instance of this business process model will remain in the system after the process has completed, to be available for monitoring, tracking and reporting activities.
- ◆ Specify whether to archive or purge the process-related data when the life span expires.

Field	Description
Process Specific	Enter the number of days or hours, or days and hours combined, that data for each instance of this business process model are permitted to remain in the system.
Expired Business Processes should be	Select either Archived or Purged for expired data. Archived data is stored in your file system.
System Default	Select this option if you want the data for instances of this business process model to expire and be archived after two days. This option is configurable.

Set Default Version

This option displays only if you are checking in a business process model for which one or more other versions are already saved in Gentran Integration Suite.

Field	Description
Default Version	Indicates the version of this business process model that is currently saved and designated in the system as the default version (the version the system runs unless otherwise specified). If you do not want this version of the process model to remain the default, select the version you are checking in, in the OTHER Versions field.
OTHER Versions	Lists the version you are checking in and any other versions saved in Gentran Integration Suite. Select the version you want to be the default.

Confirm

Field	Description
Enable Business Process	Makes the process model available to run. The business process model is enabled by default. If you are not ready to run the process, clear the check box.
Release the lock on the file	(Displays only if you are checking in a new version of a pre-existing process model that is locked.) Clear the check box if you want the pre-existing version of the process model to remain locked.
Create Permission	Select this option to have a permission selection created for this business process model automatically. The permission can be assigned to user accounts to enable or restrict user access to running the process. Permissions are optional. If none are assigned, the process is available for all users.

Checking In Business Process Models Through the GPM

Checking in business process models involves setting a variety of processing options. Before you check in a business process model, determine the appropriate options. For information, see *Business Process Model Processing Options* on page 59.

The check-in procedure you use with the GPM Source Manager differs somewhat depending on what you need to do. Select the procedure that applies to your situation:

- ◆ *Checking In a Single Business Process Model in the GPM* on page 66
- ◆ *Checking In Multiple Business Process Models in the GPM* on page 68
- ◆ *Checking In a New Version of a Business Process Model in the GPM* on page 69

Checking In a Single Business Process Model in the GPM

This procedure assumes that you have validated and saved the business process model using the GPM.

To check a single business process model in to Gentran Integration Suite:

1. In the GPM, select **Tools > Source Manager**.
2. Type the same user ID and password that you use when logging in to Gentran Integration Suite.
3. In Source Manager, select **Process > Add**.

For the remaining steps, the order of the fields that display may differ, depending on whether your GPM settings specify Expert Mode for the Source Manager. If you did not specify Expert Mode, click **Next** to display the following fields.

4. Enter the appropriate values in the following required fields:
 - ◆ Process Name – see *Process Name* on page 59.

- ◆ File Name – Browse to select the business process document (.bp file) from the directory on your client computer where you saved it.
 - ◆ Description – See *Description* on page 59.
 - ◆ Start Mode – See *Enable Async Start Mode* on page 60.
 - ◆ Transaction Level – See *Enable Transaction* on page 60.
 - ◆ Set Queue – See *Set Queue* on page 60.
 - ◆ Persistence Level – see *Persistence Level* on page 61.
 - ◆ Event Reporting Level – see *Event Reporting Level* on page 62.
 - ◆ Recovery Level – see *Recovery Level* on page 62.
 - ◆ Document Storage – see *Document Storage* on page 62.
 - ◆ Preferred Node – If you are using a clustered Gentran Integration Suite environment and you want to assign a specific node on which you prefer this process model to run, select the node. Otherwise, the field defaults to a value of **None**. For more information, see *Enable BP Execution Settings* on page 63.
 - ◆ Mandatory Node – If you are using a clustered Gentran Integration Suite environment and you want to assign a specific node on which this process model must run, select the node. Otherwise, the field defaults to a value of **None**. For more information, see *Enable BP Execution Settings* on page 63.
 - ◆ Category – See *Category* on page 60.
5. Indicate deadline settings for the business process to run. See *Deadline Settings* on page 64.
 6. Indicate archiving information for the data you are retaining. See *Life Span* on page 65.
 7. Select validation options:
 - ◆ Select **Validate Process** to validate the process model now.
Validate Process is activated by default, but is optional. Successfully validated business process models are checked in and enabled for use in Gentran Integration Suite. When validation errors occur during GPM check-in, Source Manager checks the model in, but it will not be enabled for use, and errors are not reported. Therefore, be sure to validate the process before checking it in. Otherwise, a process containing validation errors cannot be invoked until the errors are resolved.
 - ◆ Select **Enable Process** to enable the business process to run in Gentran Integration Suite. If **Validate Process** is not selected, you cannot enable the business process model.
 If you do not enable the business process, you cannot run it in Gentran Integration Suite without first enabling it later. For instructions to enable it independently of the check-in procedure, see *Enabling a Disabled Business Process* on page 83.
 8. Specify whether you want Gentran Integration Suite to track the progress of the document when the business process runs. See *Document Tracking* on page 59.
 9. Specify whether you want the business process to run its onFault protection should the business process encounter an error when it is running. See *Set onfault processing* on page 60.
 10. Click **Finish**.

You can now run your business process in Gentran Integration Suite. Test the business process before running it in your production environment. For information, see *Testing a Business Process Model* on page 73.

Checking In Multiple Business Process Models in the GPM

You cannot specify processing options for individual business process models when you check in more than one of them in the same check-in procedure. However, this method can be convenient when you do not need to set the options. For details about the processing options you can set when you use the single check-in procedure, see *Business Process Model Processing Options* on page 59.

Before adding multiple business processes at the same time, consider that:

- ◆ Gentran Integration Suite automatically sets each business process model you are checking in as the default version for that process model, and enables it for execution. Do not check in multiple process models if you do not want each of them to be the default processes.
- ◆ An invalid business process cannot be selected as a default business process, therefore Gentran Integration Suite does not check in multiple process models if one or more of the models you are checking in has not been successfully validated.
- ◆ Gentran Integration Suite applies the system default archiving configuration already defined in Gentran Integration Suite to each business process, including:
 - ◆ The queue setting (this allocates resources related to the order in which business processes are processed)
 - ◆ Level of persistence for retaining business process data
 - ◆ Length of time (days and hours) to retain archived business process data

Procedure

To check multiple business process models in to Gentran Integration Suite at the same time:

1. For each business process model that you want to check in:
 - ◆ Open the file.
 - ◆ Validate the process model (select **Build > Validate**).

If any business process model is invalid, Source Manager prevents you from checking in multiple business processes at the same time.

- ◆ Save the process model (.bp file).

Save all of the files in the same directory on your client computer.

2. In the GPM, select **Tools > Source Manager**.
3. In the **Log In** dialog box, type the same user ID and password that you use when logging in to Gentran Integration Suite.
4. In Source Manager, select **Process > Add All**.
5. In the **Directory** field, specify the path to the directory from your client computer where you saved the business process models (.bp files). To do this, click **...** to browse to the folder, if needed. Click on the

folder name that contains the files, and click **Select**, without opening the folder. Then the contents of the selected folder display in the left pane for you to select in the next step.

6. From the left pane, complete one of the following steps:
 - ◆ To select one business process model at a time from the directory, select the .bp file, and then click the right arrow. Repeat as necessary.
 - ◆ To add all the business process models from the directory at once, click the right double-arrows.
7. Click **OK**.

You can now run your business process models in Gentran Integration Suite. Test the business processes before running them in your production environment. For information, see *Testing a Business Process Model* on page 73.

Checking In a New Version of a Business Process Model in the GPM

This process assumes that you have checked out a business process model and modified and validated it.

To check in an updated version of a previously checked-in business process in the GPM:

1. In the GPM, select **Tools > Source Manager**.
2. In Source Manager, select the business process model name from the left pane (not the version) to check in, and select **Process > Check In**.

If the **Check In** option is not active, one of the following is true:

- ◆ No version of the selected process model is currently checked out.
 - ◆ You have not refreshed the Source Manager with the most current list of process models (that is, since you checked out a new version). To do this, select **View > Refresh**.
3. Complete the following required fields:

For the following fields, your display may differ, depending on whether you specified Expert Mode for the Source Manager through the GPM. If you did not specify Expert Mode, click **Next** to display the following fields.

 - ◆ Process Name – see *Process Name* on page 59.
 - ◆ File Name – Select the business process document (.bp file) from the directory on your client computer where you saved it.
 - ◆ Description – see *Description* on page 59.
 - ◆ Set Queue – see *Set Queue* on page 60
 - ◆ Persistence Level – see *Persistence Level* on page 61.
 - ◆ Event Reporting Level – see *Event Reporting Level* on page 62.
 - ◆ Recovery Level – see *Recovery Level* on page 62.
 - ◆ Document Storage – see *Document Storage* on page 62.
 4. Indicate deadline settings for the business process to run. See *Deadline Settings* on page 64

5. Indicate whether you want this version to be the default version that Gentran Integration Suite runs. If you want a different version to be the default version, select **Let me select a different version**, select the version you want from the display, and click **Next**.
6. Indicate archiving information for the data you are retaining. See *Life Span* on page 65.
7. Select validation options:
 - ◆ Select **Validate Process** to validate the process model now. You cannot check in if you do not validate.
 - ◆ Select **Enable Process** to enable the business process to run in Gentran Integration Suite. If **Validate Process** is not selected, you cannot enable the business process model.
If you do not enable the business process, you cannot run it in Gentran Integration Suite without first enabling it later. For instructions to enable it independently of the check-in procedure, see *Enabling a Disabled Business Process* on page 83.
 - ◆ Indicate whether you want to release the lock on this process model so that it can be run in Gentran Integration Suite or modified by other users.
8. Specify whether you want to track the progress of the document when the business process runs. *Document Tracking* on page 59.
9. Specify whether you want the business process to run its onFault protection should the business process encounter an error when it is running.
10. Click **Finish**.

You can now run your business process in Gentran Integration Suite. Test the business process before running it in your production environment. For information, see *Testing a Business Process Model* on page 73.

Checking In a Business Process Model Using the Text Editor

You check in a business process model using Gentran Integration Suite text editor only if you are creating or modifying the model in the editor. You can indicate whether they want the model to be the default model.

This check-in option is part of the larger process of creating or modifying a business process model using the text editor. For information, see the appropriate procedure:

- ◆ *Creating and Modifying Business Process Models In the Text Editor* on page 51
- ◆ *Modifying a Business Process Model Using the Text Editor* on page 82

Checking In a New Business Process Model Using Gentran Integration Suite Interface

Use this procedure if you want to check in a process model that you:

- ◆ Just created and saved in the GPM
- ◆ Checked out of Gentran Integration Suite, modified and saved in the GPM, and want to check into Gentran Integration Suite as a new business process model (not as a version of an existing model)

Before you check in a business process model, consider the processing options you will want to associate with it. For information, see *Business Process Model Processing Options* on page 59.

To use Gentran Integration Suite interface to check in a new business process model saved in the GPM:

1. From the **Business Process** menu, select **Manager**.
2. In the Create section, click **Go!**
3. Type a name that helps identify the business process definition you are creating. See *Process Name* on page 59.
4. Under Select an input mode for defining the new process, select **Check-in Business process created by the graphical modeling tool** and click **Next**.
5. Select the business process document (.bp file) from the directory on your client computer where you saved it.
6. Type a description that helps identify the business process you are creating and click **Next**. See *Description* on page 59.
7. Specify whether you want to track the progress of the document when the business process runs. See *Document Tracking* on page 59.
8. Specify whether you want the business process to run its onFault protection should the business process encounter an error when it is running. See *Set onfault processing* on page 60.
9. For Set Queue, indicate the queue, previously defined to allocate resources, at which to place this business process for processing. See *Set Queue* on page 60.
10. Indicate the level of persistence to retain data that makes up the business process. See *Persistence Level* on page 61.
11. Indicate the level of event reporting that you would like for this business process when it runs. See *Event Reporting Level* on page 62.
12. Indicate the level of recovery for this business process if the business process should halt during execution. See *Recovery Level* on page 62.
13. Indicate the level of document storage for documents that process when the business process runs. See *Document Storage* on page 62.
14. Indicate deadline settings for the business process to run. See *Deadline Settings* on page 64.
15. Click **Next** and indicate the life span (archiving information) for the level of persistence data you are retaining. See *Life Span* on page 65.
16. To enable the business process to run, click **Next**, and verify that the check box next to **Enable Business Process** is selected.
17. To create a permission, select **Create Permission**, and then click **Finish**.
18. Click **Finish**.

Checking In a New Version of an Existing Business Process Version in Gentran Integration Suite

Use this procedure to check in a new version of business process model that has been previously saved in Gentran Integration Suite (meaning, it already has a business process definition) and that has now been modified. During checkin you will indicate which saved version will be the default version.

Note: You cannot check in a new version of a business process model if you do not own the lock on the pre-existing model; that is, if you are not the user who checked the process model out prior to this attempt to check in the new version.

To check in a new version of an existing business process model:

1. From the **Business Process** menu, select **Manager**.
2. Use the List or Search options to locate the process model you want to check in.
3. Next to the name of the business process model for which you are checking in a new version, click **source manager**.
4. Click **Go!** next to **Check-in an updated definition for this Business Process**.
You can also click **check-in** next to a business process to disable the lock and check in a business process.
5. Select the business process document (.bp file) from the directory on your client computer where you saved it.
6. Type a description that helps identify this version of the business process. See *Description* on page 59.
7. Specify whether you want to track the progress of the document when the business process runs. See *Document Tracking* on page 59.
8. Specify whether you want the business process to run its onFault protection should the business process encounter an error when it is running.
9. For Set Queue, indicate the queue level. See *Set Queue* on page 60.
- 10.
11. Indicate the level of persistence to retain data that makes up the business process. See *Persistence Level* on page 61.
12. Indicate the level of event reporting that you would like for this business process. See *Event Reporting Level* on page 62.
13. Indicate the level of recovery for this business process if the business process should halt during execution. See *Recovery Level* on page 62.
14. Indicate the level document storage for documents that process when the business process runs. See *Document Storage* on page 62.
15. Indicate deadline settings for the business process to run. See *Deadline Settings* on page 64.
16. Click **Next** and indicate the life span (archiving information) for the level of persistence data you are retaining. See *Life Span* on page 65.
17. To compile the business process data, click **Next**.

18. To make this business process the default version, click **Next** and select the business process under **OTHER Versions**.
19. To enable the business process to run, click **Next** and verify that the check box next to **Enable Business Process** is selected.
If you choose not to enable this business process, clear the Enable Business Process check box.
20. To unlock the business process, verify that the check box next to **Release the lock on the file** is selected.
21. To create a permission associated with this business process model, select **Create Permission**, and click **Finish**.
22. Click **Finish**.

Testing a Business Process Model

Before running it in your production environment, test a new business process model or new version of a process model by manually running it, or configure it to run on a schedule. If possible, test your business process in a test Gentran Integration Suite environment.

One testing method is to test the business process using sample input data by starting the business process manually.

Retest the business process until it is working as needed.

Procedure

This process assumes that you have checked in and enabled the business process model that you are testing.

To test a business process:

1. From the **Business Process** menu, select **Manager**.
2. Type all or part of the name for the business process you want to test into the **Search** box and click **Go!**
3. Next to the business process you want to test, click **execution manager**.
4. On the Execution Manager page, ensure that the business process you want to run is enabled and set as the default version.
5. Click **execute** to open the Execute Business Process Input page.

6. Specify the following input parameters, as appropriate, and click **Go!**:

Field	Description
Local Desktop filename	Name of your client computer where the file is stored. If it is stored on the client computer, select a directory on your client computer where the file is stored. If the file is stored on the host computer, go to the UNIX command line and type the command to specify the directory where the file is saved. Optional.
Server filename	Name of the host server for your client computer. Optional
Encoding Type	Character encoding for the business process. Optional. Valid values are: <ul style="list-style-type: none"> ◆ [Not Applicable] ◆ UTF-8 ISO-8859-1 ◆ ISO-8859-5 ◆ US-ASCII ◆ ISO_8859-1 ◆ EUC-JP UTF-16 ◆ ISO-2022-JP
Run As User	Assume user-rights of another user in order to run this particular business process. The default user is Admin; therefore, if you do not change the user in this field, whomever runs this business process will have the same rights as an admin user. Optional.
Input data is not required, click Go to continue.	File the business process requires as input. Optional.

Gentran Integration Suite runs the selected version of the business process and opens the Execute Business Process page.

After you initiate the process model, you can monitor the processing activities.

Modifying and Managing Business Process Models

- ◆ *Business Process Version Management* on page 76
- ◆ *Checking Out a Business Process Model Using the GPM Source Manager* on page 78
- ◆ *Checking Out a Process Model in Gentran Integration Suite Interface* on page 80
- ◆ *Modifying a Business Process Model Using the GPM* on page 81
- ◆ *Modifying a Business Process Model Using the Text Editor* on page 82
- ◆ *Enabling a Disabled Business Process* on page 83
- ◆ *Deleting a Business Process Model* on page 83

Business Process Version Management

Both the Gentran Integration Suite interface and the GPM provide access to work with your process models through the Source Manager. The Source Manager is a version management tool for saving copies of your process models into the Gentran Integration Suite system, separately from any location on your client computer where you may have also saved them. It works as follows:

- ◆ When you create a process model, you cannot run it in Gentran Integration Suite until you have checked it in. The check-in procedure stores it for the Source Manager.
- ◆ While you can save process model .bp files to your client computer at any time, to manage versions in Gentran Integration Suite you must use the Source Manager as your file management system.
- ◆ To work with existing business process models, you must check them out through the Source Manager in order to lock the model against other users modifying it at the same time.

Note: If you click **Edit** in the interface and modify a process model without checking it out, this locks the process.

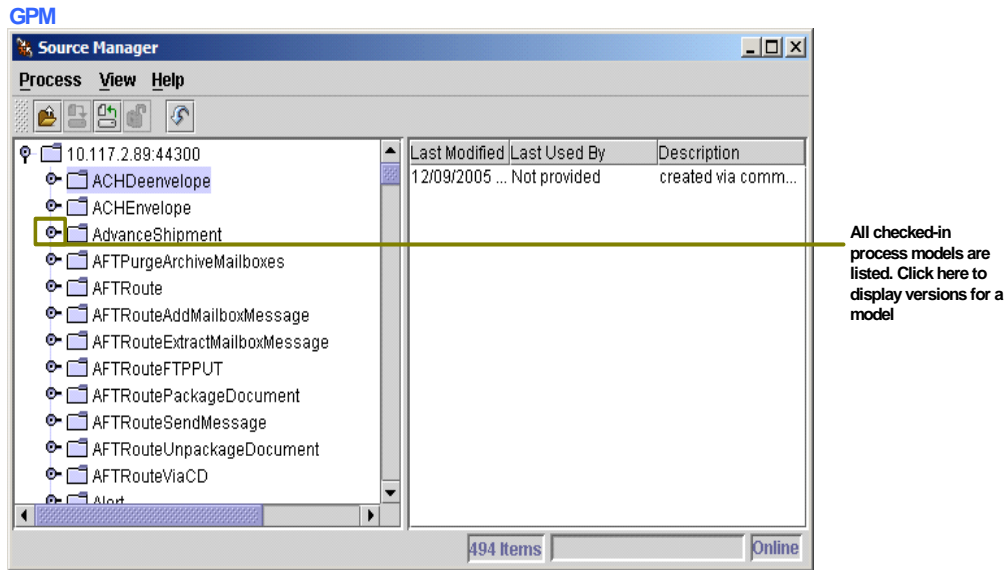
- ◆ When you complete your modifications, you check in the now-updated process model. Rather than over-writing your existing copy of the model saved in the Source Manager, the system saves a new version.

Gentran Integration Suite saves all previously checked-in versions of business process models. Therefore, a single process model may have many available versions listed in the Source Manager. One version is the designated *default version*. The default version is the version that Gentran Integration Suite automatically runs when the business process model is invoked. Retention of all versions enables you to revert to using an older version should the need arise, and saves you having to maintain versioned backup files on your client computer.

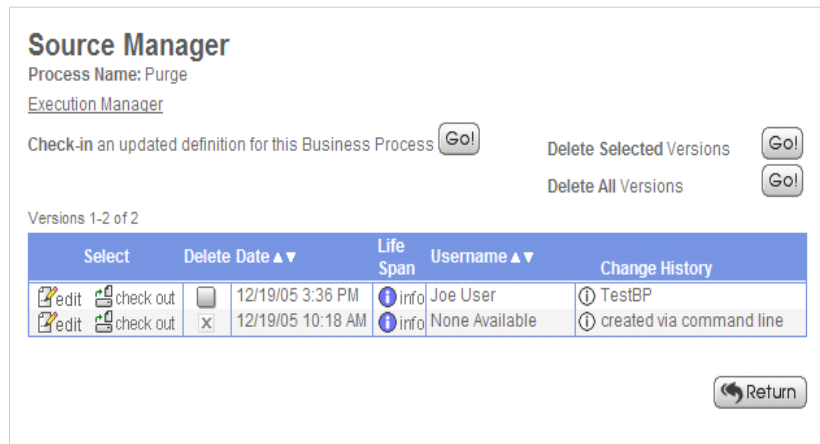
The Source Manager determines versions by filename, as follows:

- ◆ While separate versions of a process model are different configurations, the filename of each is the same.
- ◆ In the Source Manager, the system displays the date and time each version was checked in, to help you differentiate them.
- ◆ You can add additional identifying information in the Description field when you check in a process model to include more reference data about a version, such as indicating the need this version fills. This information displays in the Source Manager list in the interface.
- ◆ Assigning a new name to a process model at check-in creates a new model. The new model will have its own set of versions if you make additional changes to the file.

Working in the GPM, the Source Manager displays a file system-type list of the process models saved in the system. Working in the interface, you use search or list tools to locate a process model and access the source manager for the selected process model. The following figure illustrates the Source Manager:



Interface



When you check in an updated version of a business process model, you indicate which version is the default version in Gentran Integration Suite.

The ability to specify a default version enables you to let bootstrap adapters run the default version of a business process model as needed, while other versions can be reserved for later use or be configured to run on a preset schedule. Any time you manually start a business process, you can select the version to run.

Generally, when you check out a business process model, Gentran Integration Suite locks the process model so that other users and the system can not access it until you check it back in. If you plan to use an existing business process model as a foundation for a new model altogether, you can check out the model without locking it.

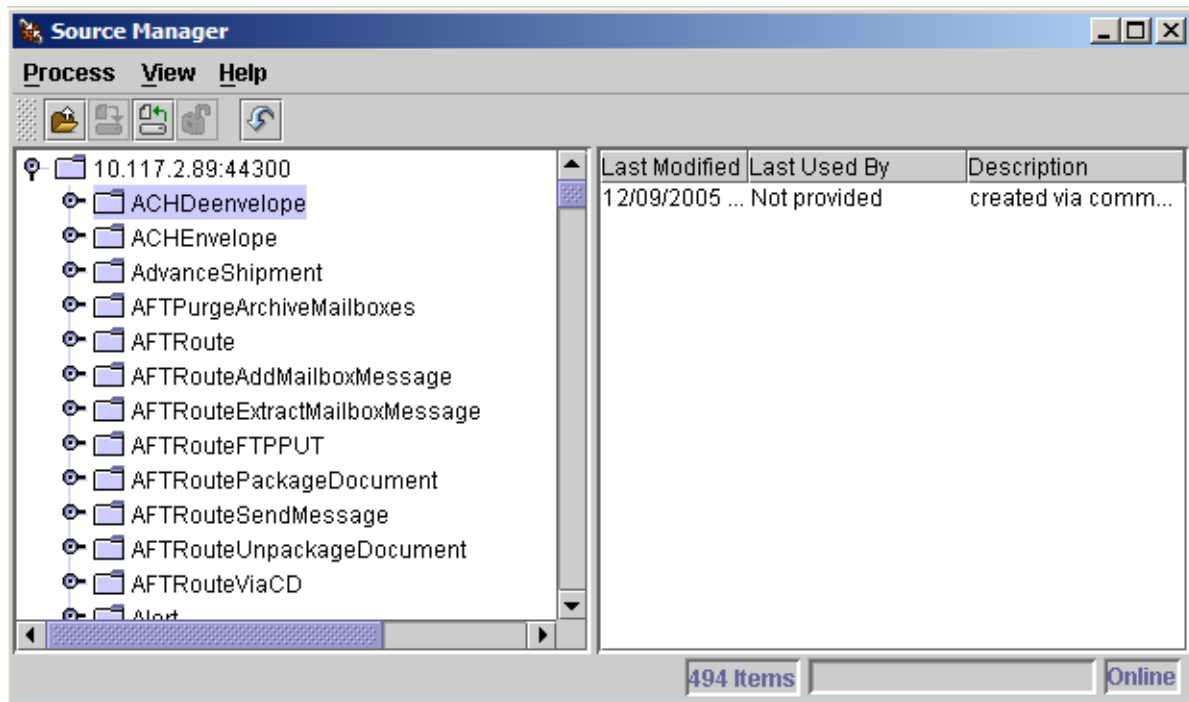
For instructions for checking out business process models, making modifications, and managing your versions of business process models, see the appropriate topic as indicated in the following table:

Task	For Instructions, see:
Check out a business process model in the GPM	<i>Checking Out a Business Process Model Using the GPM Source Manager</i> on page 78
Check out a business process model in Gentran Integration Suite interface	<i>Checking Out a Process Model in Gentran Integration Suite Interface</i> on page 80
Modify a business process model in the text editor	<i>Modifying a Business Process Model Using the Text Editor</i> on page 82
Modify a business process model in the GPM	<i>Modifying a Business Process Model Using the GPM</i> on page 81
Delete a business process model from Gentran Integration Suite	<i>Deleting a Business Process Model</i> on page 83
Enable a disabled business process version	<i>Enabling a Disabled Business Process</i> on page 83

Checking Out a Business Process Model Using the GPM Source Manager

The Source Manager in the GPM enables you to check out one or many business processes at a time. Use the appropriate procedure.

The following figure shows an example of the GPM Source Manager:



The GPM Source Manager displays an alphabetical list of checked-in business process models. You can expand each process model name to view a list in the left pane of checked-in copies of that model, organized by checkin date and time (these are versions of the business process model). The right pane displays the following information for a selected version of a business process model:

- ◆ Date and time the version was last modified
- ◆ User name of the user who last saved the version
- ◆ Any description saved with the version at check-in

Check Out a Single Business Process Model

To check out a business process using the GPM:

1. From the **Tools** menu, select **Source Manager**.
2. Type the same user ID and password you use to log in to Gentran Integration Suite.
3. In Source Manager, select a business process and select **Process > Check Out**.
4. Specify a directory on your client computer in which to save the business process model (.bp file).

Note: If you specified a file location using the GPM preferences, you do not need to perform this step. To set a default file location from the GPM, select **Options > Preferences > File Location**.
5. Indicate a new file name for the business process model when necessary. For example, to create a new version of a business process, indicate a new name that helps identify the version. See *Process Name* on page 59.

6. To prevent other users from checking out this business process, verify that the **Lock Business Process** option is selected. If you do not want to lock the process, clear the check. If you are creating a new business process model but want the model you are checking out to remain as-is in Gentran Integration Suite, you do not need to lock the process model.

A lock symbol displays beside the business process when protected.

7. Click **OK** twice. The business process is checked out and you can open it in the GPM by:
 - ◆ Selecting **File > Open**
 - ◆ Navigating to the directory where you saved the checked-out model
 - ◆ Selecting the model and clicking **Open**.

Check Out Multiple Business Process Models

To check out multiple business processes at once:

1. From the **Tools** menu, select **Source Manager**.
2. In the Log In dialog, enter your Gentran Integration Suite user ID and password.
3. In Source Manager, double-click the parent folder to display all business processes in the right pane.
4. Complete one of the following steps:
 - ◆ To select more than one business process, click to select the business process from the right pane. Press and hold **Ctrl** and click again for each additional business process that you want to select.
 - ◆ To select a range of business processes, click the first business process in the range from the right pane. Press and hold **Shift** and click the last business process in the range.
5. From the **Process** menu, select **Check Out**.
6. Specify a directory on your client computer in which to save the business process models.
7. To prevent other users from checking out these business processes, verify that the Lock Business Process option is selected and click **OK**.

A lock symbol displays beside the business process when protected.

Checking Out a Process Model in Gentran Integration Suite Interface

When you check a business process model out of Gentran Integration Suite, you save it to your client computer. You can then open the checked-out .bp file in the GPM (editing a business process model in the interface uses a different check-out procedure; for that procedure, see *Modifying a Business Process Model Using the Text Editor* on page 82).

During the check-out procedure, Gentran Integration Suite prompts you to lock the business process. Locking the business process not only prevents others from checking out the same business process, it also prevents the possibility of inadvertently replacing an existing business process. If you do not lock the

process in Gentran Integration Suite, you cannot check in a new version of it, although you can check it in as a new process model.

You can also check out a read-only copy of the process model. Using the read-only copy enables you to view and modify the business process model (in the GPM only, until you check it in to Gentran Integration Suite), but you must save it with a new name. Use this option if you want to create a new business process model using an existing one as the basis for it.

Procedure

To check out a business process model:

1. From the **Business Process** menu, select **Manager**.
2. Type all or part of the name for the business process you want to modify into the **Search** box and click **Go!**
3. Click **source manager** next to the business process you want to modify.
4. Click **check out** next to the business process.
5. Determine whether to lock the file by completing one of following steps:
 - ◆ To check out the business process for modification, click **OK**. Use this option to create an updated version of the process model in the GPM or the text editor.
 - ◆ To check out a read-only copy of the business process without locking it, click **Cancel**. Use this option to view the model in the GPM or to use it as the foundation for a new business process model (in this case you must open it in the GPM and save it with a new name).
6. In the **File Download** dialog box, click **Save**.
7. In the **Save as** dialog box, select a directory on your client computer and click **Save** to begin downloading the business process document.
8. When the download completes, close the **Download** dialog box, if it remains open.
9. Open the directory where you downloaded the file for the business process and open the file in the GPM to begin modifying it.

After you have modified a business process model, you must check it back in to Gentran Integration Suite so that you can run it. For information, see *Implementing a Business Process Model* on page 54.

Modifying a Business Process Model Using the GPM

To modify or reuse a business process that is currently checked in to Gentran Integration Suite:

1. Check out the business process. See *Checking Out a Business Process Model Using the GPM Source Manager* on page 78.

The check-out process enables you to save the business process to your client computer. You can then open the checked-out .bp file in the GPM and modify the business process model. You can change the processing options for the model when you check it back in, if needed (in step 3 below).

2. Follow the general instructions for business process creation to modify your business process model (see *Creating or Modifying a Business Process Model in the GPM* on page 41).
3. When finished, check the new version in to Gentran Integration Suite. For information about implementing new versions of business process models, see *About Checking in Business Process Models* on page 57.

Modifying a Business Process Model Using the Text Editor

Note: If you do not need to modify the BPML but only need to change processing options, skip step 6. By doing this, you check the process out and then immediately begin the check-in procedure where you can set the processing options.

To modify a business process model in the text editor:

1. From the **Business Process** menu, select **Manager**.
2. Type all or part of the name for the business process you want to edit into the **Search** box and click **Go!**
3. Click **source manager** next to the business process you want to edit.
4. Click **edit** next to the business process to access the text editor. This checks out the process and locks it.
5. Type a new description that helps you identify this version of the business process. See *Description* on page 59.
6. In the **Business Process** field, either type or copy and paste BPML code that you want to edit.
7. Click **Validate** to validate the process model. You cannot enable a business process until it is validated. A system message indicates whether the process is valid or invalid.
8. Is the process valid?
 - ◆ If No, correct invalid BPML code and repeat step 7 as necessary. You can view error information by clicking the link in the error message.
 - ◆ If Yes, click **Next**.
9. Specify whether you want to track the progress of the document when the business process runs. See *Document Tracking* on page 59.
10. Specify whether you want the business process to run its onFault protection should the business process encounter an error when it is running.
11. For Set Queue, indicate the queue, previously defined to allocate resources, at which to place this business process for processing. See *Set Queue* on page 60.
12. Indicate the level of persistence to retain data that makes up the business process. See *Persistence Level* on page 61.
13. Indicate the level of event reporting that you would like for this business process. See *Event Reporting Level* on page 62.

14. Indicate the level of recovery for this business process if the business process should halt during execution. See *Recovery Level* on page 62.
15. Indicate the level document storage for documents that process when the business process runs. See *Document Storage* on page 62.
16. Indicate deadline settings for the business process to run. See *Deadline Settings* on page 64.
17. Click **Next** and indicate the life span (archiving information) for the level of persistence data you are retaining. See *Life Span* on page 65.
18. To compile the business process data, click **Next**.
19. To enable the business process, verify that **Enable Business Process** is selected.
If you do not enable the business process, you can not run it in Gentran Integration Suite without first enabling it later. For instructions to enable it independently of the check-in procedure, see *Enabling a Disabled Business Process* on page 83.
20. If you want to create a permission associated with the business process model, select **Create Permission**, and then click **Finish**.

Enabling a Disabled Business Process

Complete this procedure if you want to run a business process model that is disabled for use:

1. From the Business Process menu, select **Manager**.
2. In the List section, select the first letter of the name of the business process you need to enable, and click **Go!**
3. Next to the name of the business process to enable, select **Execution Manager**.
4. Select **Enable** and click **Return**.

Deleting a Business Process Model

In Gentran Integration Suite, you can delete individual business process models (except system business process). Some reasons you might delete a business process model are:

- ◆ Business activities have changed and as a result a process model can no longer accomplish the activities.
- ◆ You need to remove unused versions of business process models to reduce database size.

Not all users can delete business process models. The ability to delete is governed by a permission setting in your user account. Only user accounts that have UI Delete Business Processes permission can delete business processes.

Considerations

Before deleting a business process model, consider that:

- ◆ Deleting a business process model is permanent; you cannot restore a deleted process model. Use the Export Resources function to save a copy of the business process to offline storage.
- ◆ If the business process model runs on a schedule, Gentran Integration Suite deletes the schedule with the business process.
- ◆ After you confirm that you want to delete a business process (during the delete procedure), Gentran Integration Suite deletes the business process and creates a log entry. The log entry contains the name of the business process, date and time of deletion, and the account information of the user who deleted the business process.

Procedure

Caution: Identify any uses of the business process model to ensure that deleting it does not prevent other business processes and subsequent services from running.

To delete an individual version of a business process or all versions of a business process:

1. From the **Business Process** menu, select **Manager**.
2. Search for the business process you want to delete.
3. In the Business Process Manager search results page, click **source manager** next to the appropriate business process model.
4. Do you want to delete one version of the business process, or all versions of the business process model?
 - ◆ To delete one version of the business process model:
 - a. Next to the version, under **Delete**, select the check box.
 - b. For **Delete Selected Versions**, click **Go!**
 - ◆ To delete all versions of this business process model, next to **Delete All Versions**, click **Go!**

Commonly Used Predefined Process Models

To help you accomplish business goals, Gentran Integration Suite provides a number of predefined business processes that you can use when creating business process models for your own business processes. After determining business goals and identifying the activities that enable you to meet the goals, you can either use the predefined business processes or create your own business processes.

This topic describes some common business goals and predefined business processes provided in Gentran Integration Suite that enable you to easily achieve the goals. This section provides the following types of information:

- ◆ Description of each business process
- ◆ Activities that each business process performs
- ◆ Adapters and services that accomplish the activities
- ◆ Specifications that Gentran Integration Suite may require before you can use a predefined business process

The following table lists business goals and the predefined business process that accomplishes the goals:

Business Goal	Business Process	For More Information, See
Extracts ACH (Automated Clearing House) documents, such as a Payment Order/Remittance Advice Transaction Set (820), from an CTX interchange-level envelope and locates an associated contract, according to the content of the documents. ACHDeenvelope then starts the appropriate business process.	ACHDeenvelope	<i>ACHDeenvelope Business Process</i> on page 86
Applies an CTX transaction-level envelope to one or more ACH documents. Next, the ACHEnvelope wraps the document in an CTX group-level envelope and wraps the group-level envelope in an CTX interchange-level envelope. ACH Envelope then uses the interchange-level envelope data to locate the associated contract and start the appropriate business process.	ACHEnvelope	<i>ACHEnvelope Business Process</i> on page 88
Extracts CII messages from a message group in an EDI document. Gentran Integration Suite then reads the CII message to determine the next action to perform.	CIIDeenvelope	<i>EDI Deenvelope Business Process</i> on page 90

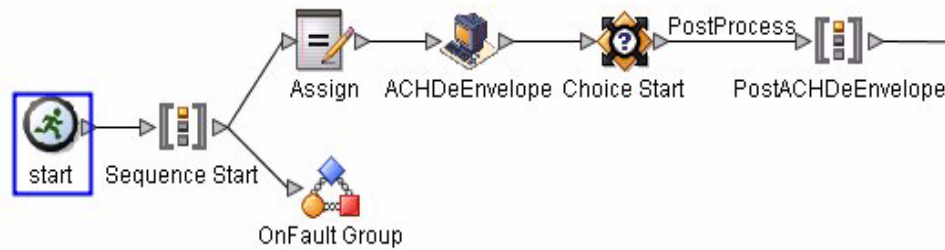
Business Goal	Business Process	For More Information, See
Extracts EDI documents from an EDIFACT interchange and locates an associated contract, according to the content of the envelopes. EDIFACTDeenvelope then starts the appropriate business process.	EDIFACTDeenvelope	<i>EDI Deenvelope Business Process</i> on page 90
Enables Gentran Integration Suite to process incoming SOAP messages.	HandleSOAPReques	<i>HandleSOAPRequest Business Process</i> on page 93
Identifies EDI documents that maintain the state waiting in Gentran Integration Suite. The state waiting often indicates that an acknowledgment is overdue.	OverdueAckCheck	<i>OverdueAckCheck Business Process</i> on page 92
Enables Gentran Integration Suite to send SOAP messages.	SendSOAPRequest	<i>SendSOAPRequest Business Process</i> on page 98
Extracts EDI documents from an ANSI X12 interchange-level envelope and locates an associated contract, according to the content of the documents. X12Deenvelope then starts the appropriate business process. With additional configuration, X12Deenvelope can also reconcile TA1 and 997 reports and generate the interchange TA1 and functional group 997 acknowledgments.	X12Deenvelope	<i>EDI Deenvelope Business Process</i> on page 90

ACHDeenvelope Business Process

The ACHDeenvelope business process performs the following primary activities:

1. The ACHDeenvelope service splits documents into interchanges and puts delimiters sent into the process data.
2. According to configuration, the service either looks up a contract or runs a business process.

The following figures show the Achdeenvelope business process model as it displays in the GPM:



The following BPML code makes up the Achdeenvelope business process:

```
<process name="ACHDeenvelope">
  <rule name="BPOnError">
    <condition>InvokeBPOnError/text()='YES'</condition>
  </rule>

  <rule name="PostProcess">
    <condition>InvokePostProcessBP/text()='YES'</condition>
  </rule>

  <sequence>
    <assign to="NACHA-Interchange" from="PrimaryDocument/@SCIOBJECTID"></assign>
    <operation name="ACHDeEnvelope">
      <participant name="DeenvelopeACH"/>
      <output message="Xout">
        <assign to="." from="*"></assign>
      </output>
      <input message="Xin">
        <assign to="." from="*"></assign>
      </input>
    </operation>

    <choice>
      <select>
        <case ref="PostProcess" activity="PostACHDeEnvelope"/>
      </select>

      <sequence name="PostACHDeEnvelope">
        <operation>
          <participant name="InvokeSubProcessService"/>
          <output message="Xout">
            <assign to="INVOKE_MODE">INLINE</assign>
            <assign to="WFD_NAME" from="//SuccessBPName/text()"></assign>
          </output>
        </operation>
      </sequence>
    </choice>
  </sequence>
</process>
```

```

        <input message="Xin">
            <assign to="." from="*"></assign>
        </input>
    </operation>

</sequence>
</choice>
<onFault>
    <choice>
        <select>
            <case ref="BPOnError" activity="ErrorBP"/>
        </select>
    </choice>
<sequence name="ErrorBP">
    <operation>
        <participant name="InvokeSubProcessService"/>
        <output message="Xout">
            <assign to="INVOKE_MODE">INLINE</assign>
            <assign to="WFD_NAME" from="//ErrorBPName/text()"></assign>
        </output>
        <input message="Xin">
            <assign to="." from="*"></assign>
        </input>
    </operation>

    </sequence>
</choice>
</onFault>
</sequence>
</process>

```

Before Using the AchDeenvelope Business Process

Before you use the ACHDeenvelope business process, you must complete the following tasks:

1. Activate your license for the ACHDeenvelope service.
2. Create an ACH-CTX inbound envelope.

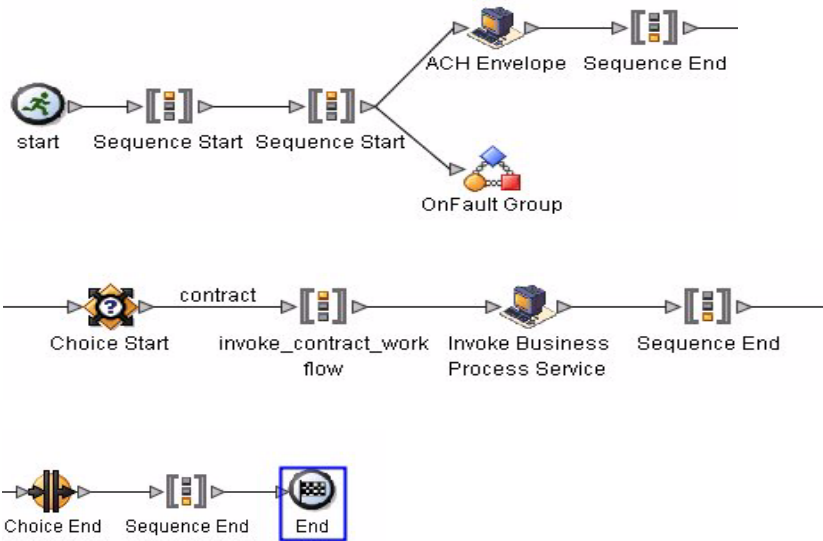
ACHEnvelope Business Process

The ACHEnvelope business processes performs the following primary activities:

1. Starting with one or more EDI documents, the ACHEnvelope services applies CTX envelope properties at the document level to each document, and then applies a message group header and trailer for documents with CTX Rule requirements.
2. The ACHEnvelope service takes one or more transaction sets and applies a functional group envelope.
3. The ACHEnvelope service takes a functional group and applies the interchange-level envelope and searches for a matching contract.

- Using the interchange-level envelope data, the service either looks up a contract or runs a business process.

The following figures show the ACHEnvelope business process model as it displays in the GPM:



The following BPML code makes up the AchEnvelope business process:

```
<process name="ACHEnvelope">
  <rule name="contract">
    <condition>CONTRACT_FOUND = &quot;YES&quot;</condition>
  </rule>

  <sequence>
    <sequence>
      <operation>
        <participant name="EnvelopeACH"/>
        <output message="Xout">
          <assign to="." from="*"></assign>
        </output>
        <input message="Xin">
          <assign to="." from="*"></assign>
        </input>
      </operation>

      <onFault>
        <operation>
          <participant name="BPExceptionService"/>
          <output message="Xout">
            <assign to="exceptionCode" from="'Translation Error'"></assign>
          </output>
          <input message="Xin">
            </input>
          </operation>
        </onFault>
      </sequence>
    </sequence>
  </process>
```

```

    <onFault code="Translation-Error-Some-Docs">
      <assign to="BREAK">YES</assign>
    </onFault>
  </sequence>
  <choice>
    <select>
      <case ref="contract" activity="invoke_contract_workflow"/>
    </select>

    <sequence name="invoke_contract_workflow">
      <operation>
        <participant name="InvokeBusinessProcessService"/>
        <output message="Xout">
          <assign to="INVOKE_MODE">ASYNC</assign>
          <assign to="." from="*"></assign>
        </output>
        <input message="Xin">
          <assign to="." from="*"></assign>
        </input>
      </operation>

    </sequence>
  </choice>
</sequence>
</process>

```

Before Using the ACHEnvelope Business Process

Before you use the ACHDeenvelope business process, you must complete the following tasks:

1. Activate your license for the ACHenvelope service.
2. Create an ACH-CTX inbound envelope.

EDI Deenvelope Business Process

The EDI Deenvelope business process includes the EDI Deenveloping service to support non-printable characters as EDI delimiters and perform the following steps:

1. Splits documents into interchanges and puts delimiters sent in the ISA (or UNA) into process data.
2. Starts the X12 Deenveloping, EDIFACT Deenveloping, or CII Deenveloping business processes, as appropriate.

If exceptions occur when running an EDI Deenvelope business process, Gentran Integration Suite generates an EDI Compliance Report.

The following figure shows the EDI deenveloping business process model as it displays in the GPM:



The following BPML code makes up the EDI deenveloping business process:

```
<process name="EDIDeenvelope">
  <sequence>
    <operation>
      <participant name="EDIDeenvelope"/>
      <output message="Xout">
        <assign to="." from="*"></assign>
      </output>
      <input message="Xin">
        <assign to="." from="*"></assign>
      </input>
    </operation>
  </sequence>
</process>
```

The following scenario shows how the EDIDeenvelope business process can deenvelope ANSI X12 documents:

1. The File System adapter collects a file from an ANSI X12 collection folder and invokes the EDIDeenvelope business process.
2. The EDI Deenveloping service determines that the file contains an X12 document and starts the X12Deenvelope business process.
3. The X12Deenvelope business process removes the envelopes to make available the transaction set envelope for the X12 document and determine the next action to perform.
4. For documents with CII Syntax Rule requirements, the X12Deenvelope business process parses the message group and uses the values indicated in the message group header to locate a matching envelope. The envelope then determines the next action to perform.

Note: If the X12Deenvelope business process does not locate a matching envelope, the business process stops. Gentran Integration Suite generates an EDI Compliance Report that describes the reason that the X12Deenvelope business process could not locate the envelope.

Before Using EDIDeenvelope

Before you use the EDIDeenvelope business process, you must complete the following tasks:

1. Create the trading profile, including a contract.
2. Create necessary envelopes.

3. Create a business process that initiates the EDIEnvelope business processes.

When creating a business process that enables inbound ST (or UNH) envelopes to translate transactions when running EDIEnvelope business processes, consider:

- ◆ Delimiters sent in the ISA or UNA segments are placed into process data in Gentran Integration Suite.
- ◆ The GPM makes available parameters that represent the delimiters, which you must configure to enable the envelopes to translate transaction.
- ◆ You must create an XPath expression that describes the location of envelopes and apply it to the Translation service.

OverdueAckCheck Business Process

The OverdueAckCheck business process identifies EDI documents that are waiting for an acknowledgment. Most likely, an acknowledgment is overdue when an EDI document state indicates continuous waiting. OverdueAckCheck produces a status report that lists details about EDI documents. You can use the report to determine whether an acknowledgment is overdue.

The following figure shows the OverdueAckCheck business process model as it displays in the GPM:



The following BPML code makes up the OverdueAckCheck business process:

```
<process name="OverdueAckCheck">
  <sequence>
    <operation>
      <participant name="OverdueAck"/>
      <output message="Xout">
        <assign to="." from="*"></assign>
      </output>
      <input message="Xin">
        <assign to="." from="*"></assign>
      </input>
    </operation>
  </sequence>
</process>
```

Before Using OverdueAckCheck

Before you use the OverdueAckCheck business process, you must specify in the envelope configuration that you expect an acknowledgment.

HandleSOAPRequest Business Process

The HandleSOAPRequest business process enables Gentran Integration Suite to receive SOAP messages. When HandleSOAPRequest receives a SOAP message, HandleSOAPRequest validates the message, and then reads the message to determine the receiver of the message.

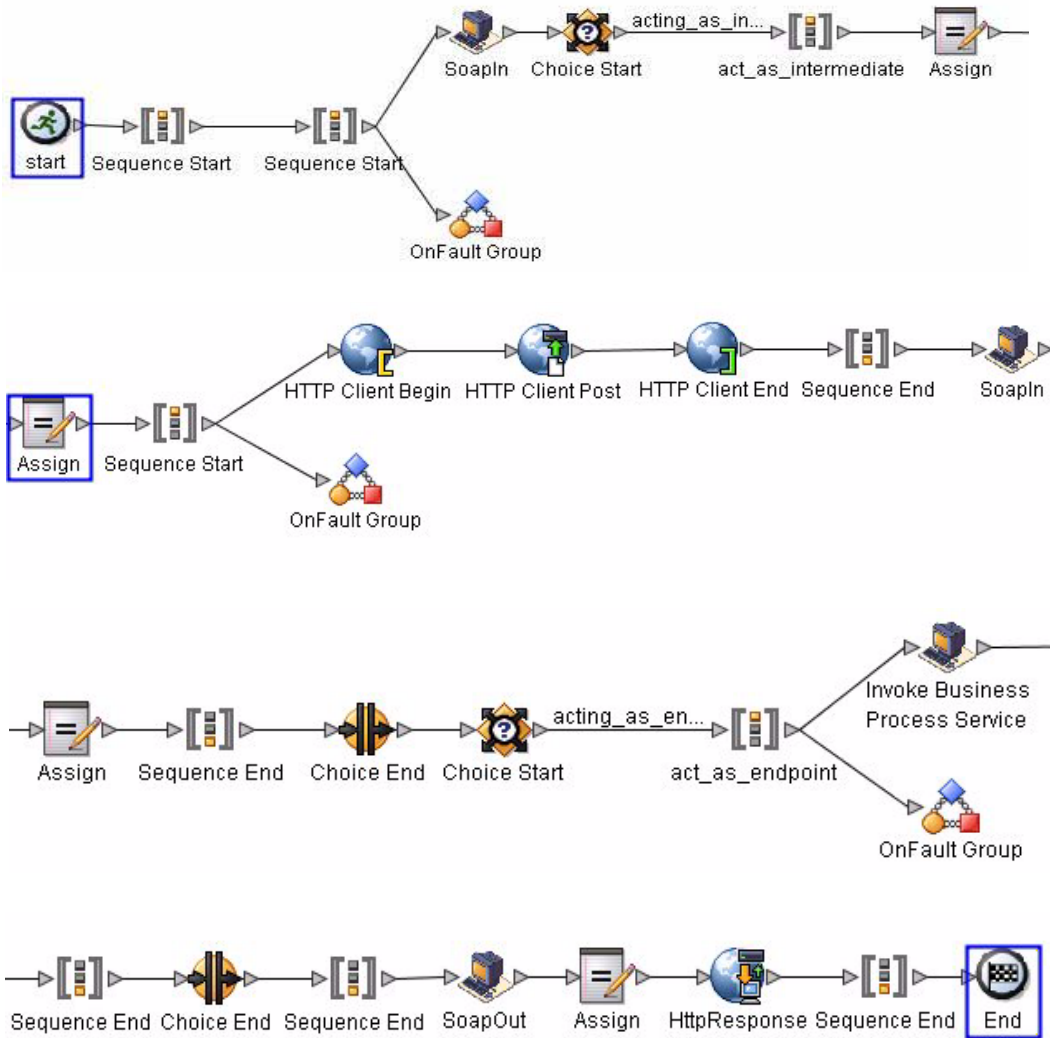
If Gentran Integration Suite is the receiver of the message, HandleSOAPRequest performs this process:

1. Verifies the digital signature.
2. Removes the SOAP envelope and puts any attachments and SOAP header blocks into process data.
Gentran Integration Suite puts inbound SOAP message attachments in business process data under the node SOAPRequestAttachments. The attachments follow this naming convention: SOAPAttachment1, SOAPAttachment2, and so on. Gentran Integration Suite sets the content ID attribute to what was specified in the SOAP message.
3. Invokes indicated subprocesses.
4. Applies a SOAP envelope if necessary and HTTP headers to the document.
5. Returns a response to requestor.

If Gentran Integration Suite is not the ultimate receiver, HandleSOAPRequest performs this process:

1. Verifies the digital signature.
2. Removes SOAP header blocks that are specific to Gentran Integration Suite and puts them into process data.
3. Invokes indicated subprocesses.
4. Forwards a document to the next receiver.
5. Receives a response from the receiver.
6. Returns a response to the requestor.

The following figures show the HandleSOAPRequest business process model as it displays in the GPM:



The following BPML code makes up the HandleSOAPRequest business process:

```

<process name="HandleSOAPRequest">
  <rule name="acting_as_intermediate">
    <condition>SOAP_INTERMEDIATE_NODE = &quot;true&quot;</condition>
  </rule>

  <rule name="acting_as_endpoint">
    <condition>SOAP_INTERMEDIATE_NODE = &quot;false&quot;</condition>
  </rule>

  <sequence>
    <sequence>
      <operation name="SoapIn">
        <participant name="SOAPInbound"/>
      </operation>
    </sequence>
  </sequence>

```

```

<output message="output">
  <assign to="." from="*"></assign>
</output>
<input message="input">
  <assign to="." from="*"></assign>
</input>
</operation>

<choice>
  <select>
    <case ref="acting_as_intermediate" activity="act_as_intermediate"/>
  </select>

  <sequence name="act_as_intermediate">
    <assign to="xport-http-url" from="NextSoapURL/text()"></assign>
    <sequence>
      <operation name="HTTP Client Begin">
        <participant name="HTTPClientBeginSession"/>
        <output message="HttpClientBeginServiceInputMessage">
          <assign to="." from="PrimaryDocument"></assign>
          <assign to="RemoteURL" from="xport-http-url/text()"></assign>
          <assign to="HTTPClientAdapter">HTTPClientAdapter</assign>
        </output>
        <input message="inmsg">
          <assign to="." from="*"></assign>
        </input>
      </operation>
      <operation name="HTTP Client Post">
        <participant name="HTTPClientPost"/>
        <output message="HttpClientPostServiceInputMessage">
          <assign to="." from="PrimaryDocument"></assign>
          <assign to="SessionToken" from="SessionToken/text()"></assign>
          <assign to="RawResponse">true</assign>
          <assign to="RawRequest"
from="xport-force-b2b-raw-message/text()"></assign>
        </output>
        <input message="inmsg">
          <assign to="." from="*"></assign>
        </input>
      </operation>

      <operation name="HTTP Client End">
        <participant name="HTTPClientEndSession"/>
        <output message="HttpClientEndServiceInputMessage">
          <assign to="SessionToken" from="SessionToken/text()"></assign>
        </output>
        <input message="inmsg">
          <assign to="." from="*"></assign>
        </input>
      </operation>

      <onFault>
        <sequence>
          <operation name="HTTP Client End">
            <participant name="HTTPClientEndSession"/>
            <output message="HttpClientEndServiceInputMessage">

```

```

        <assign to="SessionToken" from="SessionToken/text()"></assign>
    </output>
    <input message="inmsg">
        <assign to="." from="*"></assign>
    </input>
</operation>

    <assign to="SOAPfaultcode">Server</assign>
    <assign to="SOAPfaultstring">There was an error processing the SOAP
request.</assign>
    <assign to="SOAPdetail">An error occurred trying to send SOAP request
to next node.</assign>
    </sequence>
</onFault>
</sequence>
<operation name="SoapIn">
    <participant name="SOAPInbound"/>
    <output message="output">
        <assign to="." from="*"></assign>
        <assign to="bootstrap">>false</assign>
    </output>
    <input message="input">
        <assign to="." from="*"></assign>
    </input>
</operation>
<assign to="SOAPOutboundAttachments" from="SOAPResponseAttachments/*"></assign>
</sequence>
</choice>
<choice>
    <select>
        <case ref="acting_as_endpoint" activity="act_as_endpoint"/>
    </select>

    <sequence name="act_as_endpoint">
        <operation>
            <participant name="InvokeBusinessProcessService"/>
            <output message="Xout">
                <assign to="." from="*"></assign>
                <assign to="INVOKE_MODE">SYNC</assign>
            </output>
            <input message="Xin">
                <assign to="." from="*"></assign>
            </input>
        </operation>

        <onFault>
            <sequence>
                <assign to="SOAPfaultcode">Server</assign>
                <assign to="SOAPfaultstring">There was an error processing the SOAP
request.</assign>
                <assign to="SOAPdetail">An error occurred while processing the SOAP
request.</assign>
            </sequence>
        </onFault>
    </sequence>
</choice>

```



```

    <onFault code="SOAP-FAULT">
      <assign to="InvokeSubBP">false</assign>
    </onFault>
  </sequence>
  <operation name="SoapOut">
    <participant name="SOAPOutbound"/>
    <output message="output">
      <assign to="." from="*"></assign>
      <assign to="SOAP_MODE">respond</assign>
    </output>
    <input message="input">
      <assign to="." from="*"></assign>
    </input>
  </operation>
<assign to="doc-has-headers">>true</assign>
<operation name="HttpResponse">
  <participant name="HttpRespond"/>
  <output message="Xout">
    <assign to="." from="*"></assign>
  </output>
  <input message="Xin">
    <assign to="." from="*"></assign>
  </input>
</operation>

</sequence>
</process>

```

Before Using HandleSOAPRequest

Before you use the HandleSOAPRequest business process, you must complete the following tasks:

- ◆ Configure the SOAP Inbound service.
- ◆ Configure a related B2B HTTP Server adapter so that it is configured for raw messages, has the same URI as the SOAP Inbound service, and is associated with the HandleSOAPRequest business process.
- ◆ Create the business process that processes the SOAP message where Gentran Integration Suite is the final receiver. Depending on your needs, you may need to assign values to several parameters before using the HandleSOAPRequest business process.

The following table identifies parameters for various SOAP functions and the values you must specify:

Required SOAP Function	SOAP Parameter	Parameter Values
SOAP enveloping on primary document before posting	ADD_SOAP_ENVELOPING	True = add SOAP enveloping (default).
Digitally sign a SOAP message	SIGN_WITH_KEY	Type the exact name of the digital certificate.
Envelope namespace prefix for SOAP message	SOAEnvNSPrefix	Type the envelope namespace prefix. ADD_SOAP_ENVELOPING must also be true.

Required SOAP Function	SOAP Parameter	Parameter Values
Distinguish whether expected response is a SOAP message	RESPOND_NON_SOAP	True = response is not a SOAP message. False = response is a SOAP message.
Envelope namespace for SOAP message	SOAPEnvNSURI	Type the envelope namespace.

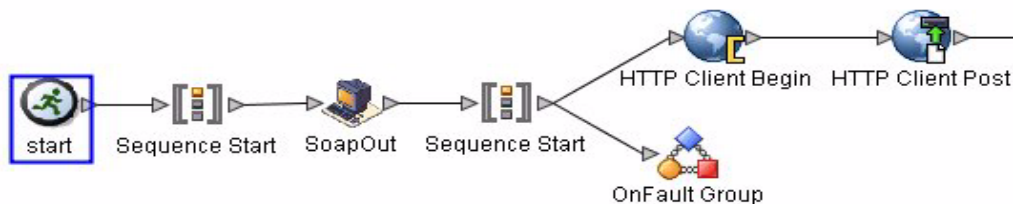
SendSOAPRequest Business Process

The SendSOAPRequest business process enables Gentran Integration Suite to send SOAP messages.

When Gentran Integration Suite sends a SOAP message, SendSOAPRequest performs the following process:

1. Applies a SOAP envelope to the data, if requested.
2. The SendSOAPRequest business process adds SOAP headers to an outbound request if the process data contains SOAP headers. The business process takes all subordinate nodes under the SOAPHeaders node in process data and adds them as SOAP header blocks.
3. The SendSOAPRequest business process adds SOAP attachments to an outbound request if the process data contains SOAP outbound attachments. The business process takes all subordinate nodes under the SOAPAttachments node, which are named SOAPAttachment1, SOAPAttachment2, and so on. These nodes must have a ContentID attribute specified, as well.
4. Sends the SOAP message to a receiver using HTTP.
5. Receives a response.
6. Acknowledges a response.
7. Provides a response to another business process in Gentran Integration Suite.

The following figures show the SendSOAPRequest business process model as it displays in the GPM:



The following figure continues the business process model of the SendSOAPRequest business process:



The following BPML code makes up the SendSOAPRequest business process:

```
<process name="SendSOAPRequest">
  <sequence>
    <operation name="SoapOut">
      <participant name="SOAPOutbound"/>
      <output message="BPML:output">
        <assign to="." from="*"></assign>
      </output>
      <input message="input">
        <assign to="." from="*"></assign>
      </input>
    </operation>

    <sequence>
      <operation name="HTTP Client Begin">
        <participant name="HTTPClientBeginSession"/>
        <output message="HttpClientBeginServiceInputMessage">
          <assign to="." from="PrimaryDocument"></assign>
          <assign to="RemoteURL" from="xport-http-url/text()"></assign>
          <assign to="HTTPClientAdapter">HTTPClientAdapter</assign>
        </output>
        <input message="inmsg">
          <assign to="." from="*"></assign>
        </input>
      </operation>

      <operation name="HTTP Client Post">
        <participant name="HTTPClientPost"/>
        <output message="HttpClientPostServiceInputMessage">
          <assign to="." from="PrimaryDocument"></assign>
          <assign to="SessionToken" from="SessionToken/text()"></assign>
          <assign to="RawResponse">true</assign>
          <assign to="RawRequest" from="xport-force-b2b-raw-message/text()"></assign>
        </output>
        <input message="inmsg">
          <assign to="." from="*"></assign>
        </input>
      </operation>

      <operation name="HTTP Client End">
        <participant name="HTTPClientEndSession"/>
        <output message="HttpClientEndServiceInputMessage">
          <assign to="SessionToken" from="SessionToken/text()"></assign>
        </output>
        <input message="inmsg">
          <assign to="." from="*"></assign>
        </input>
      </operation>
    </sequence>
  </sequence>
</process>
```

```

</operation>

<onFault>
  <sequence>
    <operation name="HTTP Client End">
      <participant name="HTTPClientEndSession"/>
      <output message="HttpClientEndServiceInputMessage">
        <assign to="SessionToken" from="SessionToken/text() "></assign>
      </output>
      <input message="inmsg">
        <assign to="." from="*"></assign>
      </input>
    </operation>

  </sequence>
</onFault>
</sequence>
<operation name="SoapIn">
  <participant name="SOAPInbound"/>
  <output message="BPML:output">
    <assign to="." from="*"></assign>
    <assign to="bootstrap">false</assign>
  </output>
  <input message="input">
    <assign to="." from="*"></assign>
  </input>
</operation>

</sequence>
</process>

```

Before Using SendSOAPRequest

Before you use the SendSOAPRequest business process, you must complete the following tasks:

- ◆ Configure the SOAP Outbound service.
- ◆ Create a separate business process for each SOAP service you want Gentran Integration Suite to call.

The business process must complete the following tasks:

- ◆ Assign a value to SOAPRequestURL. The value is the URL to which Gentran Integration Suite should post the SOAP request.
- ◆ Perform an operation with InvokeBusinessProcessService as the participant, assigning SendSOAPRequest to the WDF_NAME parameter.

- ◆ Depending on your needs, you may need to assign values to other parameters before using the SendSOAPRequest business process.

The following table identifies parameters for various SendSOAP functions and the values you must specify:

Required SOAP Function	SOAP Parameter	Parameter Value
SOAPAction HTTP header must be present	SOAP_ACTION	Type the HTTP header.
SOAP enveloping on primary document before posting	ADD_SOAP_ENVELOPING	True = add SOAP enveloping (default). False = no SOAP enveloping.
Digitally sign a SOAP message	SIGN_WITH_KEY	Type the exact name of the digital certificate.
Envelope namespace prefix for SOAP message	SOAEnvNSPrefix	Type the envelope namespace prefix. ADD_SOAP_ENVELOPING must also be true.
Distinguish whether expected response is a SOAP message	SOAP_RESPONSE_NON_SOAP	True = response is not a SOAP message. False = response is a SOAP message.
Verify a SOAP response that has been digitally signed	VERIFY_WITH_KEY	Type the name of the public key. Specify this value before you use the SendSOAPRequest business process if you expect a signature on the SOAP response.
Must use a proxy server	xport-tp-proxyauth	Type the following information in this format: <i>IP address,port number,user name,password</i> . User name and password may not be required.
Envelope namespace for SOAP message	SOAEnvNSURI	Type the envelope namespace.

A

- ACHDeenvelope predefined business process 85
- ACHEnvelope predefined business process 85
- adapters
 - for communications 26
- add_subflows 45
- All End activity 36
- All Start activity 36
- annotation
 - adding to steps in process model 42
 - deleting from icon in GPM 49
- architectural design plan 19
- archiving
 - business process level 67, 70
 - persistence data 67, 70
 - settings 31
 - settings (valid values) 65
- Assign activity 36
 - using with For Each Document service and Invoke Subprocess service 56
- automating manual activities 24

B

- BPML
 - All End activity 36
 - All Start activity 36
 - Assign activity 36
 - Choice End activity 36
 - Choice Start activity 36
 - Consume activity 37
 - creating business processes using 51
 - editing 82
 - Finish activity 35
 - Join activity 37
 - modifying in text editor 82
 - Produce activity 37
 - Repeat activity 37
 - Sequence End activity 36
 - Sequence Start activity 36
 - Spawn activity 37
 - Start activity 35
 - validating
 - about 55
 - validation checks, validating BPML 55
- BPML activities
 - configuring in GPM 43
- BPML syntax, validation check 55
- BPML validation
 - BPML syntax 55
 - ForEach//Invoke Loop 56
 - in the GPM 56
 - in the product interface 56
 - pre-existing business process models 57
- business process
 - ACHDeenvelope 85
 - ACHEnvelope 85
 - and
 - GPM 39
 - text editor 39
 - archive and purge settings 31
 - assigning rules 46
 - automation 24
 - check in
 - about 57
 - multiple process models in GPM 68
 - new version using GPM 69
 - processing options 59
 - single process model in GPM 66
 - using Gentran Integration Suite interface 70
 - using text editor 70
 - version in Gentran Integration Suite interface 72
 - check in using GPM 66
 - check out
 - in Gentran Integration Suite interface 80
 - using GPM 78
 - CIIDeenvelope 85
 - configuring services 43
 - creating name-value pairs 34, 49

- creating, about 38
- creation process for GPM 39
- deadline 52, 67, 69
- default version 76
- definition 57
- deleted, log entry 84
- deleting 83
- description 59
- development stages 20
- disabled 83
- document storage 32, 69
- edge 46
- EDIFACTDeenvelope 86
- enabling 73, 83
- export 84
- HandleSOAP 86
- implementing 54
- integration point 25
- lock 80
- locked 77
- manually running to test 73
- modifying
 - using GPM 81
- OverdueAckCheck 86
- performance
 - issues 20
- periodic review 20
- planning 30
 - approach 19
 - communications adapters 26
 - identifying activities 22
 - identifying business needs 21
 - identifying integration points 25
 - identifying subprocesses 23
 - information 19
 - performance considerations 20
- predefined 85
- predefined, using 32
- Process Name value 59
- read-only copy 81
- recovery level 69
- required technical knowledge 20
- rules and conditions 46
- SendSOAPRequest 86
- setting default version in text editor 73
- state 17
- subflow 45
- subprocess 23
- testing a model 58

- tracking level
 - about 30
 - for EDI services 31
- validating
 - about 55
 - using text editor 51, 70
- version 57
- version management 55
- viewing details in Source Manager 79
- X12Deenvelope 86
- business process model
 - copying 50
 - creation process 39
 - validate in GPM 40
- business process models
 - validating 55

C

- check in business process model
 - about 57
 - and processing options settings 59
- checking out business process model
 - in Gentran Integration Suite interface 80
 - in GPM 78
 - read-only copy 81
- Choice End activity 36
- Choice Start activity 36
- CIIDeenvelope predefined business process 85
- communication adapters for integration 26
- conditions, assigning 46
- Consume activity 37
- Correlation service 50
- correlation, generating 50
- creating business process models
 - using BPML code 51
 - using text editor 51
 - using the GPM 41

D

- deadline setting 52, 67, 69
 - valid values 64
- default version

- setting in text editor 73
- defining process automation 24
- deleting business process model 83
- description value (of process model) 59
- disabled business process model 83
- document
 - storage 32, 69
 - tracking 30
- document storage, valid values 62
- document tracking, enabling vs. disabling 59

E

- edge 46
- EDI Deenveloping predefined business process 90
- EDI services, tracking level 31
- EDIFACTDeenvelope predefined business process 86
- event reporting levels (valid values) 62
- exporting business process models 84

F

- Finish activity 35
- For Each Document service
 - in faulty business process model design 56
- ForEach//Invoke Loop
 - BPML validation 56

G

- GPM
 - validating BPML 56
- Graphical Process Modeler (GPM)
 - about 39
 - adding subflow 45
 - annotation
 - adding to icon 42
 - assigning and creating name-value pairs 49
 - checking in a business process model 66
 - checking in business process models 66
 - checking in multiple business process models 68
 - checking out business process model 78
 - configuring service and BPML activity parameters 43

- copying a business process model 50
- creating business process models 41
- deleting annotation from icon 49
- modifying read-only parameters 45
- opening stencil 41
- process for creating a business process model 39
- Rule Manager 47
- rules and conditions 46
- service configuration 43

H

- HandleSOAP predefined business process 86
- HandleSOAPRequest predefined business process 93

I

- integration points
 - and communications adapters 26
 - identifying 25
- Invoke Business Process service
 - in faulty business process model design 56

J

- Join activity 37

L

- lock 80
- locked business process 77
- log entry for deleted business process model 84

M

- manual activities, identifying 24
- monitoring
 - and name-value pairs 49
 - planning your needs 30
- monitoring and tracking needs 30

N

- name-value pairs
 - assigning and creating 49
 - assigning in business process model 49
 - constraints 34

O

onfault processing setting, about 60
 OverdueAckCheck predefined business process 86, 92

P

performance
 planning considerations 20
 queue setting 60
 periodic review of business process models 20
 persistence level
 for business process models (valid values) 61
 planning stages
 overview 20
 stage 1, identifying needs 21
 stage 2, identifying activities 22
 stage 3, identifying subprocesses 23
 stage 4, automation opportunities 24
 stage 5, integration points 25
 stage 6, visibility 30
 predefined business process
 ACHDeenvelope 85
 ACHEnvelope 85
 and subflows 32
 CIIDeenvelope 85
 EDIFACTDeenvelope 86
 HandleSOAP 86
 HandleSOAPRequest 93
 OverdueAckCheck 86, 92
 SendSOAPRequest 86, 98
 working with 32
 X12Deenvelope 86
 pre-existing business process models, validating 57
 process automation 24
 Process Name value 59
 processing options, setting at check-in 59
 Produce activity 37
 purge settings 31

Q

queue setting 60

R

read-only business process model 81
 read-only parameters in the GPM 45
 recovery level 69
 recovery level, valid values 62
 Release service
 using with For Each Document service and Invoke
 Subprocess service 56
 Repeat activity 37
 resource allocation, queue setting 60
 Rule Manager 47
 rules
 assigning 46

S

schedule
 considerations when modifying a business process
 model 84
 searching using name-value pairs 49
 SendSOAPRequest predefined business process 86, 98
 Sequence End activity 36
 Sequence Start activity 36
 service parameters
 configuring in GPM 43
 read-only in GPM 45
 services
 when to configure 43
 set queue (allocating resources by defining queue
 levels) 60
 Source Manager
 checking in a single business process model, GPM 66
 checking in multiple business processes 68
 checking out a business process model, GPM 78
 GPM, checking in business process models 66
 Spawn activity 37
 Start activity 35
 stencils, GPM
 opening 41
 subflow
 adding in GPM 45

- and predefined process 32
- subprocess 23
 - about 23
 - creating 52

T

- testing business process model 58, 73
- text editor
 - about 39
 - creating business process model 51
 - editing BPML 82
 - enabling business process 73
 - setting default business process 73
- tracking
 - planning your needs 30
- tracking level 31

V

- validation 40
 - about 55
 - BPML syntax 55
- version
 - deleting 83

W

- workflow context 17

X

- X12Develope predefined business process 86
- XML documents, assigning rules and conditions for 34
- XPath
 - and creating rules and conditions 34