

Sterling File Gateway

Build 5006 Updates

Version 2.0 Build 5006

Sterling Commerce
An IBM Company

Contents

- What's New in Build 5006.....4**
- Overview.....8**
 - How Sterling Integrator and Sterling File Gateway Work Together.....8
 - How Sterling Secure Proxy and Sterling File Gateway Work Together.....8
- System Administrator Help.....10**
 - Create User Accounts (Build 5006 or Later).....10
 - User Interface Access (Build 5006 or Later).....11
 - About Permissions (Build 5006 or Later).....13
 - About User Groups and Partner Groups (Build 5006 or Later).....14
 - Assign Permissions with User Groups.....14
 - Create Custom Groups.....15
 - Change the Default Partner User Group (Build 5006 or Later).....16
 - Migrate from Advanced File Transfer to Sterling File Gateway (Build 5006 or Later).....16
 - Rebrand Sterling File Gateway and myFileGateway (Build 5006 or later).....18
 - Change Purge Settings.....21
 - filegateway.properties (Build 5006 or Later).....22
 - filegateway_ui.properties (Build 5006 or Later).....24
 - Edit the Lock Out Parameter (Build 5006 or Later).....26
 - About Event Codes (Build 5006 or Later).....27
 - Customized Business Processes (Build 5006 or Later).....29
 - Create Custom E-Mail Notifications.....30
 - Configure a Load Balancer31
 - Configure Sterling Secure Proxy31
 - Custom File Layer Types.....32
 - About Custom File Layer Types.....32
 - Add Custom File Layer Types.....33
 - Edit Custom File Layer Types.....48
 - Add a Parameter to a Custom File Layer Type.....49
 - Delete a Parameter from a Custom File Layer Type49
 - Delete a Custom File Layer Type50
- Route Provisioner Help.....52**
 - About Partner Users.....52
 - About Partners (Build 5006 or Later).....52
 - Create a Partner (Build 5006 or Later).....53
 - Edit a Partner (Build 5006 or Later).....55
 - Create a Routing Channel (Build 5006 or Later).....56
- Operator Help.....57**
 - Search for a File (Build 5006 or Later).....57
 - Troubleshoot and Resolve Blank Arrived Files.....61
 - Failed Routes for Renamed Files.....62
- AS2.....63**
 - System Admin.....63

Implement AS2.....63

Integration Architect.....66

 Create an AS2 Outbound Routing Channel Template.....66

 Create an AS2 Inbound Routing Channel Template.....67

Route Provisioner.....67

 Create an AS2 Outbound Routing Channel.....67

 Create an AS2 Inbound Routing Channel.....68

myFileGateway.....69

 Retrieve a File Using myFileGateway69

What's New in Build 5006

Build 5006 is now available for Sterling File Gateway 2.0.

New in This Release

The following enhancements are included in this release:

Enhanced System Administration

- Automatic installation of build packages for Sterling File Gateway when builds are installed on Sterling Integrator
- A version check on system business processes and warning if the latest version is not set to run
- Additional elements that can be affected with rebranding, and rebranding persists when a new build is installed

Note: If you previously rebranded your Sterling File Gateway or *myFileGateway*, you must add a new property to your style sheet. See *Rebrand Sterling File Gateway and myFileGateway*.

Additional Browser Support

- The following browsers are supported for *myFileGateway*:
 - Microsoft Internet Explorer 6.x and later
 - Apple Safari 3.2.x and later
 - Mozilla Firefox 3.5 and later

New Properties in filegateway.properties

Property	Description
ignoreFilenameex	<p>Setting a regex pattern for this will cause any arrived file that matches your regex pattern to be ignored by Sterling File Gateway.</p> <p>This is useful for recognizing and ignoring temporary files sent by producers before they are renamed to the expected name. These will not be routed and are not considered failures.</p> <p>Specify one or more file name patterns to ignore in the following format:</p> <ul style="list-style-type: none">• filegateway.ignoreFilename1=<regex expression>• filegateway.ignoreFilename2=<regex expression>

Property	Description
	<ul style="list-style-type: none"> filegateway.ignoreFilename3=<regex expression> filegateway.ignoreFilenamex=<regex expression> <p>For example:</p> <pre>filegateway.ignoreFilename1=.[.]tmp\$</pre> <p>would have the effect of ignoring all files with an extension of .tmp.</p> <hr/> <p>Note: The regex pattern must match the file name in its entirety. Partial matches are not recognized.</p>

New Properties in filegateway_ui.properties

Property	Description
myFgStorageType	<p>Storage type to use for new documents sent through myFileGateway. Possible values are:</p> <ul style="list-style-type: none"> default - use the system default db - store documents in database file - store documents in file system <p>The default is default.</p> <p>To change this value, use the customer_overrides.properties file. For example to set it to database:</p> <pre>filegateway_ui.myFgStorageType=db</pre>
fgOnboardingDefaultUserGroupId	<p>The group partner users are automatically assigned to when they are created as a result of creating a partner in Sterling File Gateway, migrated from AFT, or the partner's identity is associated with a File Gateway partner group. Required. Default is File Gateway Partners Users Group.</p>
FGConsecFailedAttempts	<p>Number of consecutive failed login attempts that are allowed before a user is locked out of the application. Default is 0, which means users are never locked out.</p>
FGLockInterval	<p>Length of time, in minutes, that the lock is applied after the number of failed login attempts, FGConsecFailedAttempts, is exceeded. Default is 30.</p>
userIdMinLength	<p>Minimum number of characters in the user ID. The default is 5. To enable shorter or require longer User IDs, modify the following property in customer_overrides.properties:</p> <pre>userIdMinLength.ui=(# of characters)</pre> <p>The value of # of characters must be greater than zero. To implement single sign-on, this value must match the value set in Sterling Integrator.</p>

Improved Control over User Permissions

- Custom groups can be created to manage permissions for partner users by associating partner users with groups with various permissions.
- Specific permissions can be assigned to user groups or partner users to control which tabs of *myFileGateway* can be accessed and which functionality is available.
 - myFileGateway Login
 - myFileGateway File Upload
 - myFileGateway File Download
 - myFileGateway File Activity
 - myFileGateway Reports
 - myFileGateway Change Password
 - myFileGateway Help
 - myFileGateway Event Subscription
- Permissions can be managed to control whether partner users are automatically given access to mailboxes created as a result of routing channels.
 - File Gateway Auto-grant Mailbox Permissions

Greater Specification of User Security

- Additional fields in the Create Partner wizard:
 - External authentication
 - Authentication host for external users
 - Session timeout
 - Partner code
 - Password policy

Enhanced Visibility

- Additional visibility of files during routing:
 - Started
 - Determining Routes
 - Routing

Documentation Enhancements

- New topics in System Administrator Help:
 - Edit the Lock Out Parameter
 - Create Custom E-Mail Notifications
 - Custom File Layer Types
 - Implement AS2
- Additional information in existing topics in System Administrator:
 - Change Purge Settings
 - Customized Business Processes
- New topics in Operator Help:
 - Troubleshoot and Resolve Blank Arrived Files
 - Failed Routes for Renamed Files
- Improved steps in the *Delete a Partner* topic in Route Provisioner Help.

Previous Issues That Are Resolved

For a complete list and description of issues that are resolved in this release, see:

Sterling Commerce Customer Center. Log in, select Support Center. Under Product Support, select **Sterling File Gateway > Product Updates and Downloads**.

Known Issues

For help with known issues, see:

Sterling Commerce Customer Center. Log in, select **Support Center**. Type your question or error message in the search box in the upper left hand corner and click **Go to search Knowledgebase**.

Overview

How Sterling Integrator and Sterling File Gateway Work Together

Sterling File Gateway utilizes the Sterling B2B foundation, which includes Sterling Integrator, Sterling Standards, and the Sterling platform, to deliver capabilities similar to those found in Sterling Advanced File Transfer and Connect:Enterprise for UNIX, while adding new features and functionality.

Within Sterling File Gateway, Sterling Integrator is known as the B2B Console, and is accessed from the Tools menu. Administrative functions such as creating and managing user accounts, permission groups, and security keys for Sterling File Gateway are handled in Sterling Integrator.

Sterling File Gateway utilizes the communication adapters of Sterling Integrator, which include the following:

- FTP Server adapter
- FTP Client adapter
- SFTP Server adapter
- SFTP Client adapter
- HTTP Server adapter
- HTTP Client adapter
- Connect:Direct Server adapter
- Command Line adapter 2 (for PGP)

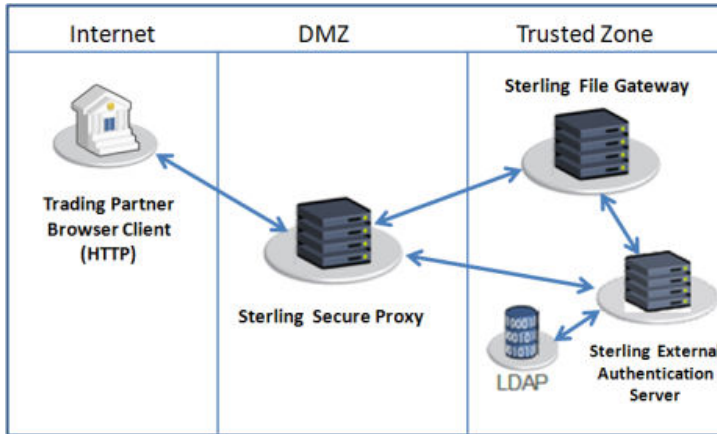
To install Sterling File Gateway, you must first install Sterling Integrator. After you install Sterling File Gateway on an instance of Sterling Integrator, when you install upgrades or new builds of Sterling Integrator, Sterling File Gateway upgrades and builds are automatically installed as part of the installation script.

How Sterling Secure Proxy and Sterling File Gateway Work Together

Sterling Secure Proxy (SSP) can be used as a proxy with Sterling File Gateway and other HTTP applications and supports a single sign-on connection. Single sign-on (SSO) provides access control that allows a user to log in once to SSP, using the HTTP protocol, and then gain access to Sterling File Gateway without logging in again. SSO bypasses normal user authentication in Sterling File Gateway and trusts that SSP has authenticated the user.

After you set up the basic single sign-on configuration, trading partners can communicate in a secure environment that provides authentication. The trading partner first connects to SSP which then connects to Sterling File Gateway on behalf of the trading partner.

Following is an illustration of the flow of data:



See *Configure a Single Sign-On Configuration between SFG and SSP* in the [Sterling Secure Proxy online library](#).

System Administrator Help

Create User Accounts (Build 5006 or Later)

Create user accounts in the B2B Console.

To create a user account:

1. From Sterling File Gateway, select **Tools > B2B Console**.
2. From within Sterling Integrator, Select **Accounts > User Accounts > Create a new Account**.
3. Complete the steps in the wizard.

Supply the following information about the user:

- Authentication type (Local or external)
- User ID - by default, the User ID must be at least five characters. To enable shorter or require longer User IDs, modify the following property in `customer_overrides.properties`:

```
userIdMinLength.ui=(# of characters)
```

The value of # of characters must be greater than zero. To implement single sign-on, this value must match the value set in Sterling Integrator.

- Password
- Confirm Password
- Policy - choose from:
 - [blank] (default)
 - Default User Policy - For the default user policy, the password must be at least six characters and is required to contain at least two of the following characters. (numeral, capital letter, !, @, #, \$, %, ^, &, *)
 - You can create a different policy for your system. Create the policy in Sterling Integrator first, then select it from the list when you create a user.
- SSH Authorized User Key
- Session Timeout (in minutes)
- Accessibility
- Dashboard Theme

See [Managing User Accounts](#).

4. Select one or more groups from the following list:

- File Gateway Integration Architects - can only access File Gateway, not *myFileGateway*
- File Gateway Operators - can only access File Gateway, not *myFileGateway*
- File Gateway Partner Users - can only access *myFileGateway*
- File Gateway Route Provisioners - can only access File Gateway, not *myFileGateway*
- File Gateway System Administrators - can only access File Gateway, not *myFileGateway*

Note: For full Sterling File Gateway functionality, each of these groups must have at least one user. By default, the following users are created during installation of Sterling File Gateway:

- *fg_sysadmin* - belongs to all File Gateway groups except File Gateway Partner Users. Also belongs to Sterling Integrator Admin group.
- *fg_architect* - belongs to File Gateway Integration Architects group
- *fg_provisioner* - belongs to File Gateway Route Provisioners group
- *fg_operator* - belongs to File Gateway Operators group

A user can belong to multiple groups, but cannot belong to File Gateway Partner Users group while a member of any other group.

Note: To protect the security of your system, delete the default users or change the default passwords.

Note: To create an independent user that is the equivalent of *fg_sysadmin*, assign the Sterling Integrator Admin group and all File Gateway groups except File Gateway Partner Users group to that user.

5. Select the permissions for the user. (Optional.) The group assignments include the standard permissions for users of each group.

6. Supply the following information for the user:

- First Name
- Last Name
- E-mail
- Pager
- Preferred Language (English, Japanese)
- Manager ID
- Identity

7. Review and confirm to create the new user account.

User Interface Access (Build 5006 or Later)

Access to each page of the user interface is authorized based on permission groups assigned when the user is created.

The following table describes which screens and functions each persona can access:

Page	System Admin	Integration Architect	Route Provisioner	Operator	Partner
Routes > Activity	(Default page.) Can search and	Can search and view events, but	Can search and view events, but	(Default page.) Can search and view	No access.

Page	System Admin	Integration Architect	Route Provisioner	Operator	Partner
	view details and links to details in B2B Console. Can mark routes as reviewed or not reviewed. Can replay and redeliver.	cannot view linked details. Can mark routes as reviewed or not reviewed. Cannot replay or redeliver.	cannot view linked details. Can mark routes as reviewed or not reviewed. Cannot replay or redeliver.	details and links to details in B2B Console. Can mark routes as reviewed or not reviewed. Can replay and redeliver.	
Routes > Channels	Can view and edit.	No access.	(Default page.) Can view and edit.	No access.	No access.
Routes > Templates	Can view and edit.	(Default page.) Can view and edit.	No access.	No access.	No access.
Participants > Groups	Can view and edit.	Can view and edit.	Can view and edit.	Can view and edit.	No access.
Participants > Partners	Can view and edit.	Can view and edit.	Can view and edit.	Can view and edit.	No access.
Participants > Communities	Can view and edit.	Can view and edit.	Can view and edit.	Can view and edit.	No access.
Tools > Reports	Can view and edit.	Can view and edit.	Can view and edit.	Can view and edit.	No access.
Tools > Activity Snapshot	Can view and get events and complete details.	Can view and get events, but not details.	Can view and get events, but not details.	Can view and get events and complete details.	No access.
Tools > B2B Console	Can view and edit complete Admin menu.	Can only view and edit Accounts > My Account.	Can only view and edit Accounts > My Account.	Can view and edit Business Processes and Operations menus, and Accounts > My Account.	No access.
Tools > Logs	Complete access to all logs.	No access.	No access.	Complete access to all logs.	No access.
Profile > Notifications	Can subscribe and delete.	Can subscribe and delete.	Can subscribe and delete.	Can subscribe and delete.	No access.
Profile > Password	Can change own password, unless external user. Can change other users passwords.	Can change own password, unless external user.	Can change own password, unless external user.	Can change own password, unless external user.	No access.
myFileGateway > Activity > Upload Files	No access.	No access.	No access.	No access.	(Default page.) Complete access to search, generate reports, upload files,

Page	System Admin	Integration Architect	Route Provisioner	Operator	Partner
<ul style="list-style-type: none"> > Download Files > Reports > Profile 					and download files when Partner is producer or consumer. Can subscribe and unsubscribe to notifications and can change own password.
Help	Can view all Help libraries.	Can view all Help libraries.	Can view all Help libraries.	Can view all Help libraries.	Can only view myFileGateway Help, not the other persona libraries.

About Permissions (Build 5006 or Later)

The permissions that control access to the pages of myFileGateway are:

- myFileGateway Login
- myFileGateway File Upload
- myFileGateway File Download
- myFileGateway File Activity
- myFileGateway Reports
- myFileGateway Change Password
- myFileGateway Help
- myFileGateway Event Subscription

Note: Partner users with the Event Subscription permission may receive notifications for events they have subscribed to, even if they do not have File Activity permission.

The Event Subscription permission only affects a user's ability to view and modify their subscriptions to events. If the Event Subscription permission is removed from a user or group, the user or members of the group will continue to receive notifications for any events already subscribed to, but cannot subscribe to additional events.

The File Gateway Partner Users group is assigned all of the available permissions, which means that all available pages of myFileGateway are displayed for partner users assigned to the File Gateway Partner Users group. To limit partners to fewer permissions, create a new group and assign only the desired permissions. See *About User Groups and Partner Groups*.

Do not modify the File Gateway Partner Users group, because your changes may be overwritten when later builds are applied.

Other Permissions

The permissions used in Sterling File Gateway are:

- File Gateway Auto-grant Mailbox Permissions

- File Gateway Producer Proxy

The File Gateway Partner Users group is assigned the File Gateway Auto-grant Mailbox Permissions, which indicates to the system whether to configure mailbox permissions automatically. With this permission, partner users are automatically assigned permission to mailboxes created as a result of File Gateway routing channels. File Gateway Producer Proxy is for system use only.

About User Groups and Partner Groups (Build 5006 or Later)

User groups and partner groups are referred to as groups in Sterling File Gateway.

User groups, permission groups, or security groups all refer to groups that contain partner users. Permissions can be assigned to partner users or to user groups, and control permission for access to pages of the myFileGateway user interface.

User groups are managed by System Administrators in Sterling Integrator, accessed from Sterling File Gateway by selecting **Tools > B2B Console > Accounts > Groups**. User groups may be assigned when the user is created, on the Partner Group Associate page, and during the aft2fg migration script. User group association, and therefore permissions, can be modified for partner users later, not just when they are created.

Note: When a partner is created in Sterling File Gateway, a user is also created and automatically assigned to the default user group. You can change the default user group. See *Change the Default User Group*.

The following user groups are installed with Sterling File Gateway:

- File Gateway System Administrators group
- File Gateway Integration Architects group
- File Gateway Route Provisioners group
- File Gateway Operators group
- File Gateway Partner Users group

There are specific permissions assigned to each user group. See *User Interface Access*. Do not change the permissions associated with these File Gateway user groups, because your changes may be overwritten when future builds of Sterling File Gateway are applied.

The term *partner group* refers to a separate and distinct concept. Partner groups are collections of partner users that have similar characteristics for use in routing channel templates. Partner groups are managed by Integration Architects in Sterling File Gateway. Do not confuse partner groups with user groups.

Assign Permissions with User Groups

To assign permissions to users, you can assign user accounts the groups that come preconfigured with Sterling Integrator. You can also create custom groups with a specific set of permissions. Users inherit all permissions associated with the groups.

Permissions Inherited from Preconfigured Groups

These groups are preinstalled with Sterling Integrator and the permissions are inherited when the group is assigned to a user account. The same permissions are inherited when a group is assigned as a subgroup.

Group	Permissions Inherited from the Group
File Gateway Integration Architects	Dash AFT Theme
File Gateway Operators	Dash AFT Theme, UI BP Manager, UI BP Monitor, UI Business Process, UI Lock Manager, UI Logs, UI Operations, UI reports Plus, permissions inherited from subgroups: Subgroup BPMONITOR - BPSSCorrelation, BusinessProcesses, CentralSearch, CommunicationSessions, Correlation, CurrentActivities, CurrentDocuments, CurrentProcesses, DataFlows, Documents, EBXMLCorrelation, EDICorrelation, EDIINT, GentranserverforUnix, Message Entry Workstation Home, SWIFTNETCorrelation, UI BP Monitor Subgroup OPERATIONS - JDBCMonitor, MessageMonitor, Perfdumps, SequenceManager, Statistics, ThreadMonitor, Troubleshooter, Tuning, UI Federated Systems, UI Operations
File Gateway Partner Users	myFilegateway Login myFilegateway File Activity myFilegateway File Upload myFilegateway File Download myFilegateway Reports myFilegateway Event Subscription myFilegateway Change Password myFilegateway Help File Gateway Auto-grant Mailbox Permissions
File Gateway Route Provisioners	Dash AFT Theme
File Gateway System Administrators	None. System Administrators have unlimited access to all resources.

Create Custom Groups

System Administrators can create new groups with different permissions (preferred), or edit group permissions. For example, to create a group of operators that can view and edit troubleshooting menus, but do not have permission to view or edit tuning menus:

1. Select **Tools > B2B Console**.
2. From the Admin menu, select **Accounts > Groups**.
3. Next to **Create a New Group**, click **Go!**
4. Type a **Group ID** and **Group Name**. Click **Next**.
5. On the **Assign Subgroups** page, select BPMONITOR. Click **Next**.
6. On the **Assign Permissions** page, select the following:
 - **Dash AFT Theme**
 - **UI BP Manager**
 - **UI BP Monitor**

- **UI Business Process**
 - **UI Lock Manager**
 - **UI Logs**
 - **UI Operations**
 - **UI reports**
 - **Troubleshooter**
7. Click **Next**.
 8. Click **Finish** and **Return**.
 9. Create or edit users, assigning them to the group you just created. These users will have access to the **Operations > Troubleshooter** menu, without access to the **Operations > System** menu and submenus.

Change the Default Partner User Group (Build 5006 or Later)

When partners are created in Sterling File Gateway, migrated using `aft2fg`, or associated with a File Gateway partner group, they are automatically assigned to the default partner user group. The default association is the File Gateway Partner Users group, which grants permissions to all features of myFileGateway, and no access to Sterling File Gateway. The system administrator must manually assign any other permissions, directly to a partner user, or by assigning the partner user to different permission user groups.

System administrators can change the default partner user group:

1. Select **Tools > B2B Console > Accounts > Groups**.
2. Create the user group, naming it with a prefix of "my".
3. Assign the permissions to be granted to new partner users assigned by default to the group. See *About Permissions* for the values.
4. Note the group ID for the new user group.
5. Edit the `customer_overrides.properties` file to specify the new user group ID, as in the following example:

```
filegateway_ui.fgOnboardingDefaultUserId=myCUSTOM_GROUP_ID.
```

where `myCUSTOM_GROUP_ID` is the group ID given in step 2.

6. Stop and restart Sterling File Gateway.

Migrate from Advanced File Transfer to Sterling File Gateway (Build 5006 or Later)

If you have an existing installation of Advanced File Transfer (AFT), you can migrate the partner configurations to Sterling File Gateway.

To migrate partner configurations from AFT:

1. Start Sterling Integrator. Sterling Integrator must be up and running when the following script is run.
2. Run the following script:
`<install_dir >/tp_import/aft2fg.sh` (for UNIX) or `aft2fg.cmd` (for Windows)

Note: Do not interrupt the script or allow Sterling Integrator to stop during the script. If the script does not complete successfully, you can run it again. If the problem persists, contact Customer Support.

- The script performs the migration and displays details of the migration.

The following operations are performed:

- Static and dynamic routing channels are created, based on the consumer identification policies in effect for the migrated producers.
 - AFT routing rules are replaced with a single automatic evaluation Sterling File Gateway routing rule.
 - AFT Route Business Process is disabled.
 - If a consumer identification policy of Use Map was utilized in AFT, a routing channel template is created so that the map will continue to drive the consumer identification. After conversion the name of the map used in the routing cannot be changed in Sterling File Gateway. The name of the map used is visible from the Data Session details window only.
 - PGP settings remain in effect.
 - The Advanced File Transfer tab in Sterling Integrator will be available, but limited to offer AFT Route Activity and Reporting links so that a legacy AFT user can still view old AFT data for as long as it exists in the system.
- If the migration fails, an error message is displayed. The migration report states what changes were successfully completed. Correct the error conditions and proceed. It is safe to run the script again.
 - The imported partners will automatically be associated with the "All Partners" partner group. A different default group can be set in `customer_overrides.properties` by editing the property:

```
filegateway_ui.fgOnboardingDefaultUserGroupId=CustomUserGroup
```

where `CustomUserGroup` is the name of the group to assign to newly migrated users.

You can also associate the newly migrated Partner with other Sterling File Gateway partner groups to make them work with routing channel templates that have specified these partner groups.

- Disable the `AFTPurgeArchiveMailboxes` business process in Sterling Integrator.
- If you have created custom protocols in AFT, the custom business process that implements the protocol may need to be modified. If the business process name contained an underscore, parameters passed from AFT to custom protocol business processes were incorrectly prefixed with part of the business process name. In Sterling File Gateway, these prefixes are removed, which is the correct behavior. Edit your business process where the custom parameters are used and correctly reference them according to the table below.

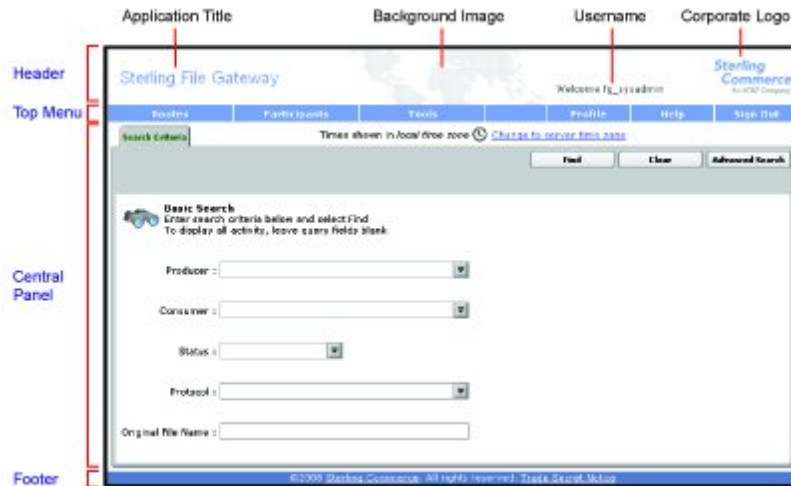
Business Process Name	Parameter Definition	AFT Parameter	SFG Parameter	Changes Required?
My_CustProtBP	HostName	CustProtBP_ HostName	HostName	Yes. Change the custom protocol business process to use "HostName" instead.
CustomProtocolBP	HostName	HostName	HostName	No change required because the custom protocol business process name does not have an underscore.

See *Add Custom Protocols*.

Rebrand Sterling File Gateway and *myFileGateway* (Build 5006 or later)

You can rebrand Sterling File Gateway and *myFileGateway* to use your company's logo or other special content. To customize the look of Sterling File Gateway and *myFileGateway*, you create a skin, reference this new skin, and restart your system. You can use the same or different skins for Sterling File Gateway and *myFileGateway*.

The following figure shows the location of the portions of the screens you can rebrand:



The corresponding file names are:

- Header:
 - [skin]/brandingcontent/header.txt
 - [skin]/brandingcontent/myFgHeader.txt
 - [skin]/load_skin.js
 - [skin]/images/FGimages/brandingimages/...
- Top Menu: [skin]/skin_styles.css
- Central Panel:
 - [skin]/skin_styles.css
 - [skin]/load_skin.js
 - [skin]/images/...
- Footer: [skin]/brandingcontent/footer.txt

Note: If you rebranded Sterling File Gateway in a previous version, you must make an additional change after you install Build 5006. Add the `.menuBackground` property to the custom skin `.css` file as in the following:

```
/* --- menu background color for main navigation bar;
default is #7896CF --- */
.menuBackground {
background-color: #7896CF;
}
```

To rebrand Sterling File Gateway:

1. Locate files in the following directories for the default skins:

`<install_dir>/container/Applications/filegateway/isomorphic/skins/FileGateway`
and

`<install_dir>/container/Applications/myfilegateway/isomorphic/skins/FileGateway`

2. Copy and rename the “FileGateway” directory in path:

`<install_dir>/container/Applications/filegateway/isomorphic/skins/FileGateway`

You can use any valid directory name. In the next steps, the renamed directory is referred to as [skin].

3. To customize the header, you can change the following elements:

- Application Title
- Background Image
- Corporate Logo
- Position of the user name
- HeaderALT

4. To change the Application Title:

- a) Open the following file:

`[skin]/brandingcontent/header.txt`

- b) Change line 15 to refer to your company name (padding-left: 15px" nowrap="nowrap">My Company</td>)

- c) Open `[skin]/brandingcontent/myFgHeader.txt`

- d) Change line 15 to refer to your company name (or another name) (padding-left: 15px" nowrap="nowrap">My Company</td>)

5. To change the Background Image:

- a) Create a new Background Image GIF image, 66 pixels high by 800 pixels wide and named “MastheadBkgd_Map.gif”

- b) Place this GIF in the following directory:`[skin]/images/FGimages/brandingimages/`

- c) Open the following file: `[skin]/brandingcontent/header.txt`

- d) Change line 3 to refer to your skin’s directory where the background image (from step 5) is located (`isomorphic/skins/[skin]/images/FGimages/brandingimages/ MastheadBkgd_Map.gif`)

- e) Open `[skin]/brandingcontent/myFgHeader.txt`

- f) Change line 3 to refer to your skin’s directory where the background image (from step 5a) is located (`isomorphic/skins/[skin]/images/FGimages/brandingimages/ MastheadBkgd_Map.gif`)

6. To change the Corporate Logo:

- a) Create a new Corporate Logo GIF image, which should be 66 pixels high by 93 pixels wide and named “hdr_logo.gif”

- b) Place this GIF in the following directory:`[skin]/images/FGimages/brandingimages/`

- c) Open the following file: `[skin]/brandingcontent/header.txt`

- d) Change line 18 to refer to your skin’s directory where the corporate logo image (from step 6a) is located (`isomorphic/skins/[skin]/images/FGimages/brandingimages/ hdr_logo.gif`)

- e) Open `[skin]/brandingcontent/myFgHeader.txt`

- f) Change line 18 to refer to your skin's directory where the corporate logo image (from step 6a) is located (isomorphic/skins/[skin]/images/FGImages/brandingimages/ hdr_logo.gif)
7. To change the position of the user name:
 - a) Open the following file:[skin]/load_skin.js
 - b) Change the two variables on Lines 14 and 15 to position the name label where you desire:
 - headerUserNameTop (expressed in absolute pixels from the top)
 - headerUserNameLeft (expressed as a percentage of page width, from the left side)
 8. To change the headerALT, which is displayed while the header is loading:
 - a) Open the following file:[skin]/load_skin.js
 - b) Change the variable on Line 13 (headerALT) to your company name (e.g. "My Company").
 9. To change the footer:
 - a) Open the following file: [skin]/brandingcontent/footer.txt
 - b) Modify the first line to refer to your company name as well as the link to your corporate Web site, if desired: ...href='http://www.MyCompany.com' target='_blank'>My Company...
 10. To reference the new [skin]:
 - a) Open load_skin.js in your new [skin] directory
at:<install_dir>/container/Applications/filegateway/isomorphic/skins/[skin]
 - b) Change approximately line 47 to refer to the directory name of your new [skin], that is,
"isc.Page.setSkinDir("[ISOMORPHIC]/skins/[skin])"
 - c) Copy this [skin] directory into the myfilegateway directory
at:<install_dir>/container/Applications/myfilegateway/isomorphic/skins/
 - d) To change the skin reference, modify filegateway_ui.properties to replace 'fgSkinName=FileGateway' with 'fgSkinName=[skin]'
 11. To modify the browser title, modify customer_overrides.properties to replace the values:
 - For Sterling File Gateway - filegateway_ui.fgWindowTitle
 - For myFileGateway - filegateway_ui.myfgWindowTitle
 12. To change the header only for myFileGateway:
 - Modify only the two files, header.txt and myFgHeader.txt in the new directory
at:(<install_dir>/container/Applications/myfilegateway/isomorphic/skins/[skin]/brandingcontent
 13. Run the following scripts:
 - <install_dir>/bin/hardstop.sh
 - <install_dir >/bin/deployer.sh
 - <install_dir >/bin/run.sh
 14. Refresh your browser cache.

When you launch Sterling File Gateway, the new branding is shown in the header and footer. When your Partner users launch *myFileGateway*, the new branding is shown in the header.

Change Purge Settings

Sterling File Gateway activity is purged, not archived. Data that is purged is unrecoverable. Depending on your file transfer usage patterns, you may want to change the frequency in which Sterling File Gateway activity is purged. System Administrators can change the frequency for purging. Purging behavior is governed by the following settings in the `visibility.properties` file:

- `lifespan_dataflow` - length of time, in hours, before dataflow records are purged. Default is 336 hours (14 days).
- `lifespan_adminaudit` - length of time, in hours, before administrative change records, such as deleting a user are purged. Default is 336 hours (14 days). If a partner is deleted, the user who deleted it is recorded until the record is purged according to the value for the `lifespan_adminaudit` property.
- `lifespan_session` - length of time, in hours, before communication session records are purged. Default is 336 hours (14 days).

Note: To avoid conflicts, `lifespan_dataflow` and `lifespan_session` should be set to the same length of time.

Values for these settings are used in the schedule for the Purge Service. Changing either the settings or the schedule will result in a change in purge behavior for new activity records. Activity that has already occurred is governed by `lifespan` settings at the time they occurred.

Note: Changes made to this file affect the behavior of all tables in Sterling Integrator with a prefix of `ACT_`.

Once activity is purged, it is no longer available in the system and will not be found in a search that matches the criteria for it.

The tables in Sterling File Gateway that are purged are:

- `FG_ARRIVEDFILE`
- `FG_ROUTE`
- `FG_DELIVERY`
- `FG_EVENT_ATTR`
- `FG_ROUTE_EVENT`

To change settings for purge:

1. Open or create the following file:
`<install_dir>/properties/customer_overrides.properties`
2. Add the following properties:
`dmvisibility.lifespan_dataflow=Value`
`dmvisibility.lifespan_adminaudit=Value`
`dmvisibility.lifespan_session=Value`
where Value is the number of hours before an item is purged.
3. Save the `customer_overrides.properties` file.
See [Using Property Files](#).
4. Restart Sterling File Gateway for the settings to take effect.

Purge Messages from Mailboxes

Messages in consumer mailboxes are not automatically purged, and over time could affect system performance. To avoid this, configure the Mailbox Scheduled Delete service to delete messages from one, many, or all mailboxes. You cannot replay or redeliver messages that have been purged. See [Mailbox Scheduled Delete Service](#).

filegateway.properties (Build 5006 or Later)

The filegateway.properties file contains properties which control the operation of Sterling File Gateway.

The following table describes properties in the filegateway.properties file:

Note: Do not edit the filegateway.properties file. Make all changes in the customer_overrides.properties file. For example, to change the pgpCmdline2svcname property, enter the following line into customer_overrides.properties:

```
filegateway.pgpCmdline2svcname=CUSTOM
```

substituting CUSTOM with the name of your Command Line 2 adapter. See [Using Property Files](#).

Property	Description
ignoreFilenameex	<p>Setting a regex pattern for this will cause any arrived file that matches your regex pattern to be ignored by Sterling File Gateway.</p> <p>This is useful for recognizing and ignoring temporary files sent by producers before they are renamed to the expected name. These will not be routed and are not considered failures.</p> <p>Specify one or more file name patterns to ignore in the following format:</p> <ul style="list-style-type: none">• filegateway.ignoreFilename1=<regex expression>• filegateway.ignoreFilename2=<regex expression>• filegateway.ignoreFilename3=<regex expression>• filegateway.ignoreFilenameex=<regex expression> <p>For example:</p> <pre>filegateway.ignoreFilename1=.[.]tmp\$</pre> <p>would have the effect of ignoring all files with an extension of .tmp.</p> <p>Note: The regex pattern must match the file name in its entirety. Partial matches are not recognized.</p>
ftpClientAdapterName	<p>The FTP Client Adapter instance or service group that the FileGatewayDeliverFTP business process will use. Override this property in customer_overrides.properties if a custom FTP Client Adapter instance must be used to contact trading partners. You can also specify an adapter group name to load-balance outbound FTP sessions across multiple adapter instances. Default is:</p> <pre>ftpClientAdapterName=FTPClientAdapter</pre>
bpCompletionProbes.1 bpCompletionSleepMsec.1	<p>Timeouts and sleep intervals that control how long Sterling File Gateway waits for every sub-business process it invokes. These control the timeouts when a business process is executed synchronously during</p>

Property	Description
bpCompletionProbes.2 bpCompletionSleepMsec.2	<p>routing. Used for consumer identification business processes and for PGP processing. Enables one set of relatively quick probes followed by a second set of slower probes. The first set will be very reactive, but consume more processor. The second set will activate for longer-running processes and will consume less processor.</p> <p>First probe 120 times with 100 Milliseconds between, for a total of 12 seconds. Default is:</p> <pre>bpCompletionProbes.1=120 and bpCompletionSleepMsec.1=100</pre> <p>Then probe 600 times with 2000 Milliseconds between, for a total of 1200 seconds (20 minutes). Default is:</p> <pre>bpCompletionProbes.2=600 and bpCompletionSleepMsec.2=2000</pre>
pgpCmdline2svcname	<p>The name of the Command Line 2 adapter to be used for PGP packaging and unpackaging. Override this property in customer_overrides.properties if a custom Command Line 2 adapter must be used for PGP operations. You can also specify an adapter group name to load-balance outbound PGP sessions across multiple adapter instances. Default is:</p> <pre>pgpCmdline2svcname=PGPCmdlineService</pre>
fgRoutePGPCmdLineSocketTimeout	<p>Timeout value, in milliseconds, for PGP package and unpackage operations invoked by Sterling File Gateway. Default value is 240000 milliseconds (4 minutes)</p>
fgRouteConcurrentSessionLimit	<p>Limits the number of File Gateway services that can be running concurrently. The services are split into two groups, and each group has this value as a limit. Therefore, there will be a maximum of two times the value of this property services running.</p> <p>It is best to set this somewhat (but not too much) higher than the number of business process threads in queues 4 and 6 (these are the queues where the File Gateway Services run.) The default is 8. To change this value, use the customer_overrides.properties file to set:</p> <pre>filegateway.fgRouteConcurrentSessionLimit=(# of limit)</pre>
required_si_build_ver	<p>The build number (version) of Sterling Integrator that Sterling File Gateway requires. This is checked at system start up. If the current version of Sterling Integrator does not equal the required_si_build_ver, a warning is issued and the system is shut down. Required. Do not change or override this property.</p>
fgOnboardingDefaultUserGroupId	<p>The group partner users are automatically assigned to when they are created as a result of creating a partner in Sterling File Gateway, migrated from AFT, or the partner's identity is associated with a File Gateway partner group. Required. Default is File Gateway Partners Users Group.</p>

Property	Description
userIdMinLength	<p>Minimum number of characters in the user ID. The default is 5. To enable shorter or require longer User IDs, modify the following property in <code>customer_overrides.properties</code>:</p> <pre>userIdMinLength.ui=(# of characters)</pre> <p>The value of # of characters must be greater than zero. To implement single sign-on, this value must match the value set in Sterling Integrator.</p>
FGConsecFailedAttempts	<p>Number of consecutive failed login attempts that are allowed before a user is locked out of the application. Default is 0, which means users are never locked out.</p>
FGLockInterval	<p>Length of time, in minutes, that the lock is applied after the number of failed login attempts is exceeded. Default is 30.</p>

filegateway_ui.properties (Build 5006 or Later)

The `filegateway_ui.properties` file contains properties which control the location of the Help systems for Sterling File Gateway and *myFileGateway*, as well as several other user interface settings.

The following table describes properties in the `filegateway_ui.properties` file:

Note: Do not edit the `filegateway_ui.properties` file. Make all changes in the `customer_overrides.properties` file. For example, to change the URL for the Help system, enter the following line into `customer_overrides.properties`:

```
filegateway_ui.help.uri=http://CUSTOM
```

substituting CUSTOM with your preferred URL. See [Using Property Files](#).

Property	Description
reportingdirectory	<p>Location of the reports templates.</p> <p>Default - <code>reportingdirectory=&INSTALL_DIR/reporting</code></p> <p>Required. Do not modify or override.</p>
help.uri	<p>Specifies the URL for the Help used by Sterling File Gateway. Required. The default is:</p> <pre>http://help.sterlingcommerce.com/SFG20/index.jsp</pre> <p>This site is hosted by Sterling Commerce.</p>
myFghelp.uri	<p>Specifies the URL for the help used by <i>myFileGateway</i>. Required. The default is:</p> <pre>http://help.sterlingcommerce.com/mySFG20/index.jsp</pre> <p>This site is hosted by Sterling Commerce.</p>
notification.partner.url	<p>Login URL for partner users to access <i>myFileGateway</i>.</p> <p>Required. The default is:</p> <pre>notification.partner.url=http://&HOST_ADDR;:&PORT1;/myfilegateway</pre>

Property	Description
	<p>Note: The specified URL will be included in email messages generated to partner users. If you implement Sterling Secure Proxy (SSP), it is imperative that you change this property to remove the original server details and replace with the SSP-designated URL.</p>
notification.admin.url	<p>Login URL for administrative users to access Sterling File Gateway. Required. The default is:</p> <pre>notification.admin.url=http://&HOST_ADDR;:&PORT1/filegateway</pre> <p>Note: The specified URL will be included in email messages generated to administrative users.</p>
fgMaxRoutingChannelRecords	<p>Limits the total number of routing channel records returned by a search. Required. Default is 1000. You can change this to fine tune performance by editing the customer_overrides.properties file.</p>
myFgStorageType	<p>Storage type to use for new documents sent through myFileGateway. Possible values are:</p> <ul style="list-style-type: none"> • default - use the system default • db - store documents in database • file - store documents in file system <p>The default is default.</p> <p>To change this value, use the customer_overrides.properties file. For example to set it to database:</p> <pre>filegateway_ui.myFgStorageType=db</pre>
fgMaxActivityRecords	<p>Limits the total number of Activity Records that will be returned in activity search. This can be edited to fine tune performance. The default is:</p> <pre>fgMaxActivityRecords=1000</pre>
fgWindowTitle	<p>The title of the window that displays in the top browser bar for Sterling File Gateway. Required. Default is Welcome to Sterling File Gateway.</p>
myfgWindowTitle	<p>The title of the window that displays in the top browser bar for <i>myFileGateway</i>. Default is Welcome to Sterling File Gateway.</p>
fgSkinName	<p>The file that contains the branding information for Sterling File Gateway. Required. Default is FileGateway.</p>
myfgSkinName	<p>The file that contains the branding information for <i>myFileGateway</i>. Required. Default is FileGateway.</p>
fgOnboardingDefaultSessionTimeout	<p>The default session timeout in minutes for a Partner User created using the Sterling File Gateway onboarding.</p> <p>The default is:</p> <pre>fgOnboardingDefaultSessionTimeoutInMinutes=15</pre>
fgOnboardingDefaultUserGroupId	<p>The group partner users are automatically assigned to when they are created as a result of creating a partner in Sterling File Gateway, migrated from AFT,</p>

Property	Description
	or the partner's identity is associated with a File Gateway partner group. Required. Default is File Gateway Partners Users Group.
FGConsecFailedAttempts	Number of consecutive failed login attempts that are allowed before a user is locked out of the application. Default is 0, which means users are never locked out.
FGLockInterval	Length of time, in minutes, that the lock is applied after the number of failed login attempts, FGConsecFailedAttempts, is exceeded. Default is 30.

Edit the Lock Out Parameter (Build 5006 or Later)

The lock out parameter specifies the number of consecutive failed login attempts that are allowed before a user is locked out of the application. By default, the lock out parameter (FGConsecFailedAttempts) is set to 0, which tells the login servlet to not lock users, regardless of the number of failures. System administrators can set this lock out number to any numeric value by editing the `customer_overrides.properties` file in the `<install_dir>/properties` directory.

Note: Do not edit the `filegateway.properties` file. Make all changes in the `customer_overrides.properties` file.

The following parameters control the user lock out behavior:

Property	Description
FGConsecFailedAttempts	Number of consecutive failed login attempts that are allowed before a user is locked out of the application. Default is 0, which means users are never locked out.
FGLockInterval	Length of time, in minutes, that the lock is applied after the number of failed login attempts is exceeded. Default is 30.

To change the lock out behavior:

1. Stop Sterling File Gateway.
2. In the `<install_dir>/properties` directory, locate `customer_overrides.properties`.
3. In a text editor, open `customer_overrides.properties`.
4. Locate the `filegateway.FGConsecFailedAttempts = 0` entry.
5. Highlight and change 0 to the new number of login attempts.
6. Locate the `filegateway.FGLockInterval = 30` entry.
7. Highlight and change 30 to the new number of minutes the lock applies.
8. Save the `customer_overrides.properties` file with the same name in the same location.
9. In the `<install_dir>/bin` directory run the `setupfiles` script.
10. Restart Sterling File Gateway. The changes you made in the `customer_overrides.properties` file are applied and come into effect for all user accounts.

About Event Codes (Build 5006 or Later)

Each activity during the progress of a file transfer generates an event code. These codes are displayed in the activity details to enable Partners and Operators to see the progress and navigate to more details. System Administrators can create custom event codes and modify the permissions for standard event codes.

Some event codes trigger notifications to subscribers. System Administrators can change the permissions for an event code by using the `customer_overrides.properties` file to override values in the `FGEventCodes.properties` file. The default subscription settings are provided in the table below:

Event Code	Name	Description	Default Subscription Settings
FG_0050	MailboxAuthorizationFailure	When a user fails to access a mailbox that is monitored	Operators
FG_0201	BusinessProcessStarting	When a business process is started, with the reason for starting it stored in context.	Only in activity details.
FG_0202	BusinessProcessSuccess	When a business process is successfully completed, with a link to the business process.	Only in activity details.
FG_0203	SendMessageBusinessProcessStarted	When a business process is successfully started, with a link to the business process.	Only in activity details.
FG_0250	BusinessProcessFailure	When a business process fails, with a link to the business process	Operators
FG_0401	FactDiscovery	When a fact is discovered by the route, for example, matching a pattern on the file name.	Only in activity details.
FG_0404	ProducerFound	When a producer and user are identified based on the arrived file.	Only in activity details.
FG_0407	ConsumerFound	When a consumer is identified based on the route plan.	Only in activity details.
FG_0408	ArrivedFileStarted	When a file arrives to be routed	Operators, producers, and consumers
FG_0409	ArrivedFileDeterminingRoutes	When an arrived file starts determining routes.	Only in activity details.
FG_0410	ArrivedFileRouting	When an arrived file starts processing routes.	Only in activity details.
FG_0411	ArrivedFileRouted	When an arrived file completes all its routes	Operators, producers, and consumers
FG_0412	RouteStarted	When a route is started from an arrived file.	Only in activity details.
FG_0413	RouteDeterminingDeliveries	When a route starts determining deliveries.	Only in activity details.
FG_0414	RouteDelivering	When a route starts processing deliveries.	Only in activity details.
FG_0415	RouteComplete	When a route completes all its deliveries	Operators, producers, and consumers
FG_0416	DeliveryStarted	When a delivery is started from a route.	Only in activity details.
FG_0417	DeliveryTransforming	When a delivery starts to transform the consumer file.	Only in activity details.

Event Code	Name	Description	Default Subscription Settings
FG_0418	DeliveryDelivering	When a delivery starts delivering the consumer file to the consumer.	Only in activity details.
FG_0419	DeliveryComplete	When a delivery is complete	Operators, producers, and consumers
FG_0420	ArrivedFileReplayed	When an arrived file is replayed, with a link to the replay	Operators, producers, and consumers
FG_0421	ArrivedFileReplayOf	When an arrived file is a replay of an original arrived file, with a link to the original file.	Only in activity details.
FG_0422	Redeliver	When a redelivery is requested by a user	Operators, producers, and consumers
FG_0423	DeliverRedelivering	When a delivery starts redelivering the consumer file to the consumer.	Only in activity details.
FG_0424	ArrivedFileIgnored	When an arrived file is ignored due to a configured pattern for ignoring files	Operators, producers
FG_0425	ArrivedFileDescription	The description of the Arrived File	Operators, producers
FG_0450	ProducerMessageNotFound	When a producer message is invalid or cannot be found	Operators, producers
FG_0451	ProducerDocumentNotFound	When a producer document is invalid or cannot be found	Operators, producers
FG_0455	ArrivedFileFailed	When an arrived file fails	Operators, producers
FG_0456	RouteFailed	When a route file fails	Operators, producers, and consumers
FG_0457	DeliveryFailed	When a delivery fails	Operators, producers, and consumers
FG_0458	FileGatewayServiceVersionMismatch	When a newer version of a system business process is installed, but is not the default chosen version.	Operators
FG_0501	ProducerMailboxRouteCandidatesFound	When route candidates are found for an arrived file based on the producer and the mailbox of the message.	Only in activity details.
FG_0502	RouteCandidatesFound	When route plan candidates are found for an arrived file.	Only in activity details.
FG_0503	RouteCandidate	A route plan candidate for an arrived file.	Only in activity details.
FG_0504	Route	When one or more routes are chosen from the candidates.	Only in activity details.
FG_0505	RoutesFound	The number of routes that will be executed.	Only in activity details.
FG_0506	Route Candidate Does Not Match	When a routing channel template contains no matching producer file structure for an arrived file.	Only in activity details.
FG_0550	ZeroRouteCandidatesFound	When no route candidates are found for an arrived file	Operators, producers
FG_0551	ZeroRouteChannelsFound	When no route channels are chosen from the list of candidates for an arrived file	Operators, producers

Event Code	Name	Description	Default Subscription Settings
FG_0552	InvalidRoute	When a route is invalid	Operators, producers
FG_0601	TransformedMessage	When a message is transformed to the final format for the consumer.	Only in activity details.
FG_0602	ProducerPayloadExtracting	When the router begins to extract a producer payload file.	Only in activity details.
FG_0603	ConsumerPayloadConstructing	When the router begins to construct a consumer payload file for delivery.	Only in activity details.
FG_0604	ConstructedLayer	When a single layer in the consumer payload file gets constructed.	Only in activity details.
FG_0605	ExtractedLayer	When a single layer in the producer payload file gets extracted.	Only in activity details.
FG_0606	LayerOptions	When options are passed to a business process to process a layer.	Only in activity details.
FG_0607	PGPConstructSkipped	When the PGP Construct layer is skipped because the consumer does not handle PGP and it is optional on the Routing Channel Template	Operators, consumers
FG_0650	ExtractLayerFailed	When extraction of a layer fails	Operators, producers
FG_0651	ConstructLayerFailed	When construction of a layer fails	Operators, consumers
FG_0701	DeliveredMailboxMessage	When a message is delivered to a mailbox (either a consumer mailbox or a mailbox for sending to a listening consumer).	Only in activity details.
FG_0702	DeliveredListeningPartnerMessage	When the file transfer is complete.	Only in activity details.
FG_0703	ChangeDirectory	When the supported protocol changes directory on the listening consumer's server to transfer the file.	Only in activity details.
FG_0704	ConsumerDestinationMailboxFound	When the destination mailbox for the consumer is discovered.	Only in activity details.

Customized Business Processes (Build 5006 or Later)

Upgrading to a new build may install new versions of Sterling File Gateway system business processes. If you have modified the previous version of a system business process, the new version will be installed but will not be set as the default version. Your modified version will continue to be the default version. During the build installation, the output will produce a message on the screen and in the `installService.log` similar to the following:

```
Adding New system flow: FileGatewayMailboxRoute.bpml BPML has not been set as default version.
```

To use the new version of the system business process, you will need to manually update the business process to reflect your modifications and set it as the default version.

Sterling File Gateway performs a version check on system business processes to verify that the latest version is being run. If the version check fails, all routes are marked as “Failed”. For a failed route, click on the row to view details. Look for the error message:

```
FG-0458 A newer version of Business Process xxx is installed, but is not the default chosen version.
```

This is a reminder to perform the changes and reset the default business process.

There is also a log entry when this occurs.

Create Custom E-Mail Notifications

This procedure requires knowledge of XSLTs. Sterling Commerce cannot provide support for modifying XSLTs.

To modify the text or subject for email notification of events:

1. From Sterling File Gateway, select **Tools > B2B Console**.
2. From within Sterling Integrator, select **Deployment > XSLT**.
3. In the Search box, type FG.
4. To edit email notifications received by administrative users, select FgRouteEventEmailNotification. To edit email notifications received by partner users, select FgRouteEventPartnerEmailNotification. Click on **Source Manager** next to the one you want to edit.

Note: To change the email notifications for both administrative and partner users, you must edit both XSLTs.

5. Select **Check Out**. Click **OK** to lock the file for editing. An example of the original file contents is:

```
<?xml version="1.0" encoding="UTF-8"?>
<xsl:stylesheet version="1.0" xmlns:xsl="http://www.w3.org/1999/XSL/Transform">
<xsl:output method="text"/>
<xsl:template match="/">
The following File Gateway routing event occurred:
Route Event Details:
=====
Event Code:      <xsl:value-of select="/FgRouteEvent/EventCode"/>
Event Message:  <xsl:value-of select="/FgRouteEvent/EventMessage"/>
Producer:       <xsl:value-of select="/FgRouteEvent/Producer"/>
Consumer:       <xsl:value-of select="/FgRouteEvent/Consumer"/>
Filename:       <xsl:value-of select="/FgRouteEvent/Filename"/>
Timestamp:      <xsl:value-of select="/FgRouteEvent/Time"/>
=====
Use the link below to sign into your myFileGateway Suite instance:
<xsl:value-of select="/FgRouteEvent/TargetURL"/>
</xsl:template>
</xsl:stylesheet>
```

6. Revise the file with the changes you need.
See *About Event Codes* for descriptions of the codes.
7. Save the file to your local disk without changing the name.

8. Check the file back in, releasing the edit lock. Browse to the location where you saved it to your local disk. This new version will persist when you apply future upgrades.
9. To change the subject for an email notification, create or edit the `customer_overrides.properties` file. The subject is in the following property:

```
filegateway_eventcodes.EventNotificationEmailSubject=File Gateway Routing Event  
E-mail Notification [Event Code = {0}]
```

In `customer_overrides.properties`, add the following:

```
filegateway_eventcodes.EventNotificationEmailSubject=CUSTOM SUBJECT HERE {0}
```

Where the `{0}` parameter will be substituted with the event code.

10. To change the text for an event code, create or edit the `customer_overrides.properties` file. The event message is in the following property:

```
filegateway_eventcodes.text=event message
```

For example, to change the text for event code `FG_0506`, `Route Candidate Does Not Match`, make the following entry in the `customer_overrides.properties` file:

```
filegateway_eventcodes.FG_0506.text=CUSTOM TEXT HERE
```

Substitute your message for `CUSTOM TEXT HERE`.

Note: Do not edit the `FgEventCodes.properties` file. Make all changes in the `customer_overrides.properties` file. See [Using Property Files](#).

11. Stop and restart Sterling Integrator for your changes to take effect.

Configure a Load Balancer

Sterling File Gateway requires users to maintain persistent connections to operate correctly. This means that every time a user makes a request within a single session, it must be to the same server installation of Sterling File Gateway.

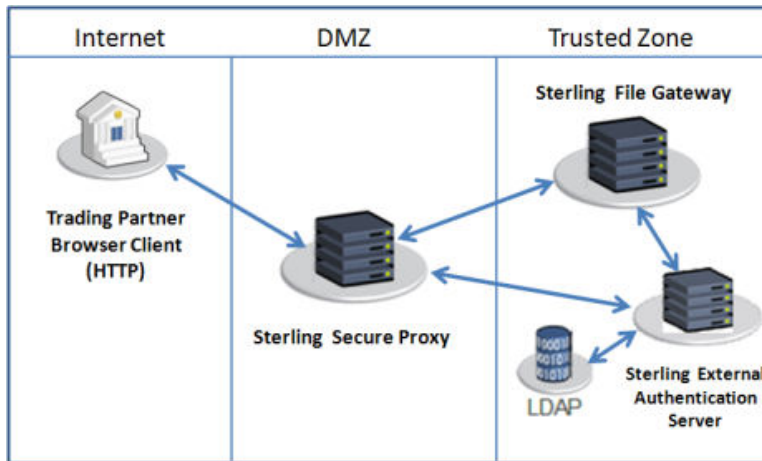
If you are using a load balancer to run multiple Sterling Secure Proxy engines, avoid login credential errors or session timeout conditions by configuring the load balancer to use "sticky sessions" (also known as persistence, server affinity, or "sticky cookies"). Refer to your load balancer documentation for details about configuring persistence.

Configure Sterling Secure Proxy

Sterling Secure Proxy (SSP) can be used as a proxy with Sterling File Gateway and other HTTP applications and supports a single sign-on connection. Single sign-on (SSO) provides access control that allows a user to log in once to SSP, using the HTTP protocol, and then gain access to Sterling File Gateway without logging in again. SSO bypasses normal user authentication in Sterling File Gateway and trusts that SSP has authenticated the user.

After you set up the basic single sign-on configuration, trading partners can communicate in a secure environment that provides authentication. The trading partner first connects to SSP which then connects to Sterling File Gateway on behalf of the trading partner.

Following is an illustration of the flow of data:



If you are using a load balancer to run multiple SSP engines, avoid login credential errors or session timeout conditions by configuring the load balancer to use "sticky sessions" (also known as persistence, server affinity, or "sticky cookies"). Refer to your load balancer documentation for details about configuring persistence.

See *Configure a Single Sign-On Configuration between SFG and SSP* in the [Sterling Secure Proxy online library](#).

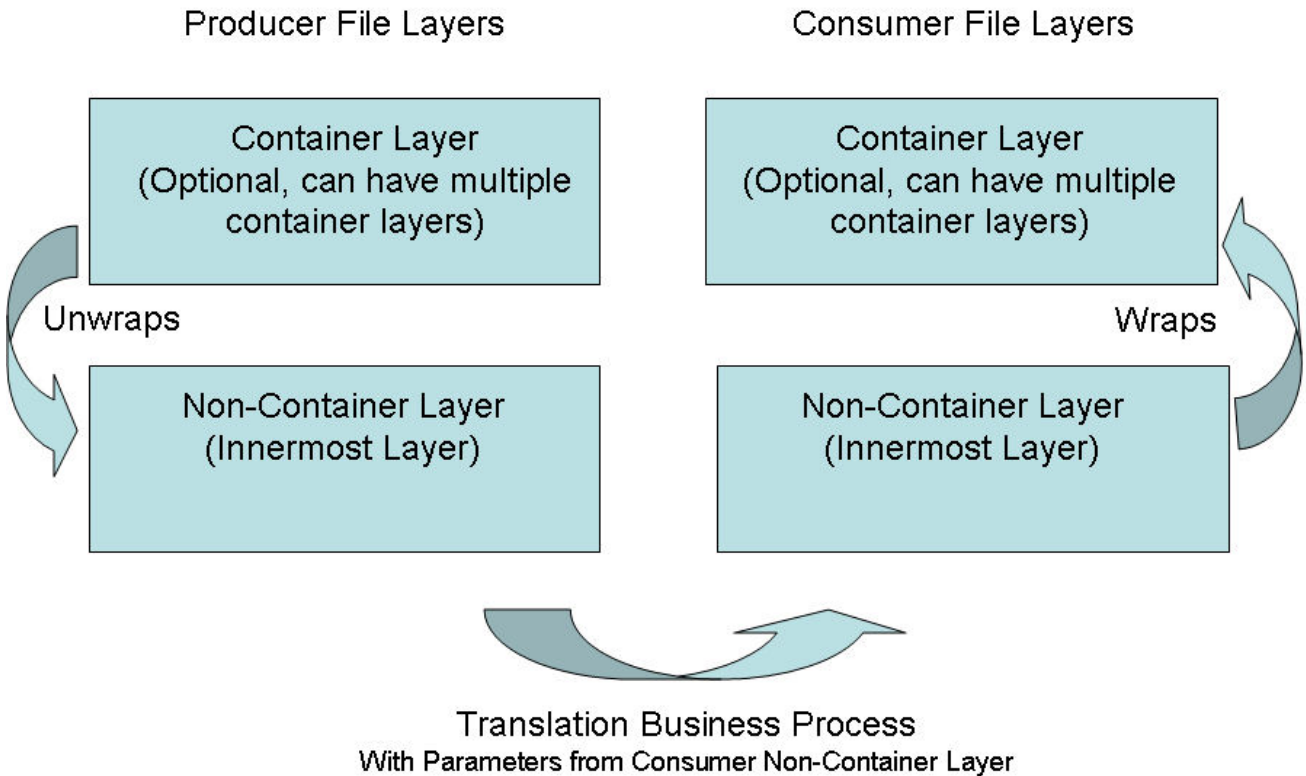
Custom File Layer Types

About Custom File Layer Types

Routing channel templates use file layer types to describe producer and consumer file structures. The following file types are supported when you install Sterling File Gateway:

- Container type layers - contain other container or non-container layers. For example, a PGP layer can contain a ZIP layer and a ZIP layer can contain a TEXT layer. A zip file can only contain multiple files if it is the outermost layer. The standard container types are:
 - ZIP
 - GZIP
 - PGP
- Non-container type layers - or primitive, do not contain any nested layers. The standard non-container layers are:
 - Text
 - Unknown

The following graphic shows the relationship between the file layers for the producer and the consumer and the processing that Sterling File Gateway performs between each layer:



If you have additional requirements, request that your System Administrator add custom file layer types. When they are added, the new file layer types will be available when you create new routing channel templates. The custom file layers can be container or non-container type, and can be used for either or both the producer or consumer file layers. System Administrators can create a maximum of 100 custom layer types.

Add Custom File Layer Types

System Administrators can add custom file layer types to supplement the supplied file layer ZIP, GZIP, PGP, Text or Unknown types.

This procedure is for advanced users with a knowledge of XAPIs and APIs. The java docs that support this functionality are located at http://lonely/api_javadocs, Package com.sterlingcommerce.fg.xapi.api.

The following constraints apply to custom file layer types:

- Custom file layer types can be container or non-container types.
- A single custom file layer type can be used for the producer layer, the consumer layer, or both.
- A custom container layer type must be configured with a business process that will perform the appropriate function on the container layer.
- A custom non-container layer type on the producer side may map to a custom non-container layer type on the consumer side, but a business process must be specified to perform the appropriate translation from one format to the other.
- The name provided for custom file layer types must begin with "FGC_". This indicates that table entries for the LAYER_TYPE column in the FG_P_FLR_TYPE and FG_C_FLR_TYPE tables must begin with "FGC_". The maximum length for LAYER_TYPE is 10 characters, including the "FGC_".
- There are a maximum of 100 custom layers types, and each type can have a maximum of 10 parameters, including the required parameters.
- All parameter values for custom file layer type tables should conform to the corresponding max character length specified in the tables below.

- In the FG_P_FLR_PRM_TYPE table and FgProducerFileLayerParameterType XML element, the ordinal value “0” is reserved for the “File name pattern as regular expression” parameter and ordinal value “1” is reserved for the “File name pattern group fact names, comma delimited” parameter, both of which are required for the producer file structure in every producer file layer type.
- In the FG_C_FLR_PRM_TYPE table and FgConsumerFileLayerParameterType XML element, ordinal value “0” is reserved for the “File name format” parameter, which is required for the consumer file structure in every consumer file layer type.
- Although parameters that correspond to ordinal value “0” show up as bold in the UI and are required, the user has no control of this for any other parameters that they might add for custom file layer types.
- A file layer type can be edited or deleted only if it is not used in a template.

Before you begin, create the business processes to perform the functions, such as translation, on the custom layers. Plan the mappings from your layers in the following sequence:

- Producer container
- Producer non-container
- Consumer non-container
- Consumer container

The following procedure creates some example file layers to demonstrate the process. The specific XML will be different when you create different custom file layers. To create the example custom file layers:

1. Create a business process named FileGatewayCustomLayerXAPI with the following BPML:

```
<process name="FileGatewayCustomLayerXAPI">
  <!--
  This business process can be used to manage File
  Gateway Custom Layers.
  -->
  <sequence name="Begin Process">
    <operation name="XAPIServiceType">
      <participant name="XAPIService"/>
      <output message="XAPIServiceTypeInputMessage">
        <assign to="api">multiApi</assign>
        <assign to="." from="*"></assign>
      </output>
      <input message="inmsg">
        <assign to="." from="*"></assign>
      </input>
    </operation>
  </sequence>
</process>
```

2. Using a text editor, create a file named CreateCustomLayersSampleBPInput_EX.xml. Copy and paste the following contents into the XML file, removing any page breaks:

```
<MultiApi>
  <API Name="manageFgProducerFileLayerType">
  <!-- This API affects the first Producer File Layer Type
  and the Parameter types associated with it. See the
  FG_P_FLR_TYPE, FG_P_FLR_PRM_TYPE, and FG_P_FLR_TRANS
  table information below. -->
  <Input>
  <FgProducerFileLayerType ContainsName="N"
```

```

Description="EX Prod Container"
DisplayLabel="EX Prod Container " IsContainer="Y"
LayerType="FGC_EXPCON" Lockid="0"
ProducerFileLayerTypeKey="EXPCON_GUID">
<FgProducerFileLayerParameterTypeList
  TotalNumberOfRecords="3">
<FgProducerFileLayerParameterType DefaultValue="."+
  Description="File name pattern as regular expression"
  DisplayLabel="File name pattern"
  DisplayType="String" Ordinal="0"
  ParameterName="FILENAME_PATTERN"
  ProducerFileLayerParameterTypeKey="EXPCON_P1_GUID"
  ProducerFileLayerTypeKey="EXPCON_GUID" />
<FgProducerFileLayerParameterType Description=
  "File name pattern group fact names, comma delimited"
  DisplayLabel="File name pattern fact names"
  DisplayType="String" Ordinal="1"
  ParameterName="FILENAME_PATTERN_FACTNAMES"
  ProducerFileLayerParameterTypeKey="EXPCON_P2_GUID"
  ProducerFileLayerTypeKey="EXPCON_GUID" />
<FgProducerFileLayerParameterType
  Description="Spin value for encryption"
  DisplayLabel="Spin"
  DisplayType="String" Ordinal="2"
  ParameterName="EncryptionSpin"
  ProducerFileLayerParameterTypeKey="EXPCON_P3_GUID"
  ProducerFileLayerTypeKey="EXPCON_GUID" />
</FgProducerFileLayerParameterTypeList>
</FgProducerFileLayerType>
</Input>
</API>
<API Name="manageFgProducerFileLayerType">
<!-- This API affects the second Producer File Layer Type
and the Parameter types associated with it. See the
FG_P_FLR_TYPE, FG_P_FLR_PRM_TYPE, and FG_P_FLR_TRANS
table information below. -->
<Input>
  <FgProducerFileLayerType ContainsName="N"
    Description="EX Prod Non Container"
    DisplayLabel="EX Prod Non Container"
    IsContainer="N" LayerType="FGC_EXPNCN"
    ProducerFileLayerTypeKey="EXPNCN_GUID">
  <FgProducerFileLayerParameterTypeList
    TotalNumberOfRecords="2">
  <FgProducerFileLayerParameterType
    DefaultValue="."+
    Description="File name pattern as regular expression"
    DisplayLabel="File name pattern"
    DisplayType="String" Ordinal="0"
    ParameterName="FILENAME_PATTERN"
    ProducerFileLayerParameterTypeKey="EXPNCN_P1_GUID"
    ProducerFileLayerTypeKey="EXPNCN_GUID" />
  <FgProducerFileLayerParameterType
    Description="File name pattern group fact names,

```

```

        comma delimited"
        DisplayLabel="File name pattern fact names"
        DisplayType="String" Ordinal="1"
        ParameterName="FILENAME_PATTERN_FACTNAMES"
        ProducerFileLayerParameterTypeKey="EXPNCON_P2_GUID"
        ProducerFileLayerTypeKey="EXPNCON_GUID" />
    </FgProducerFileLayerParameterTypeList>
</FgProducerFileLayerType>
</Input>
</API>
<API Name="manageFgConsumerFileLayerType">
    <!-- This API affects the first Consumer File Layer Type
         (container type) and the Parameter types associated with
         it. See the FG_C_FLR_TYPE, FG_C_FLR_PRM_TYPE,
         and FG_C_FLR_TRANS
         table information below. -->
    <Input>
        <FgConsumerFileLayerType
            ConsumerFileLayerTypeKey="EXCCON_GUID"
            Description="EX Con Container"
            DisplayLabel="EX Con Container"
            IsContainer="Y" LayerType="FGC_EXCCON">
        <FgConsumerFileLayerParameterTypeList
            TotalNumberOfRecords="2">
        <FgConsumerFileLayerParameterType
            ConsumerFileLayerParameterTypeKey="EXCCON_P1_GUID"
            ConsumerFileLayerTypeKey="EXCCON_GUID"
            DefaultValue="{ProducerFilename}"
            Description="File name format"
            DisplayLabel="File name format"
            DisplayType="String" Ordinal="0"
            ParameterName="FILENAME_FORMAT" />
        <FgConsumerFileLayerParameterType
            ConsumerFileLayerParameterTypeKey="EXCCON_P2_GUID"
            ConsumerFileLayerTypeKey="EXCCON_GUID"
            DefaultValue="3" Description="Encryption Charm"
            DisplayLabel="Encryption Charm"
            DisplayType="String" Ordinal="1"
            ParameterName="EncryptionCharm" />
        </FgConsumerFileLayerParameterTypeList>
    </FgConsumerFileLayerType>
</Input>
</API>
<API Name="manageFgConsumerFileLayerType">
    <!-- This API affects the second Consumer File Layer Type
         (non-container type) and the Parameter types associated
         with it. See the FG_C_FLR_TYPE, FG_C_FLR_PRM_TYPE, and
         FG_C_FLR_TRANS table information below.
         -->
    <Input>
        <FgConsumerFileLayerType
            ConsumerFileLayerTypeKey="EXCNCN_GUID"
            Description="EX Con Non-Container"
            DisplayLabel="EX Con Non-Container"

```

```

    IsContainer="N" LayerType="FGC_EXCNCN">
<FgConsumerFileLayerParameterTypeList
  TotalNumberOfRecords="1">
<FgConsumerFileLayerParameterType
  ConsumerFileLayerParameterTypeKey="EXCNCN_P1_GUID"
  ConsumerFileLayerTypeKey="EXCNCN_GUID"
  DefaultValue="{ProducerFilename}"
  Description="File name format"
  DisplayLabel="File name format"
  DisplayType="String" Ordinal="0"
  ParameterName="FILENAME_FORMAT" />
</FgConsumerFileLayerParameterTypeList>
</FgConsumerFileLayerType>
</Input>
</API>
<API Name="manageFgConsumerFileLayerTranslation">
  <Input>
    <FgConsumerFileLayerTranslation
      BusinessProcessName="CustomBP3"
      ConsumerFileLayerTranslationKey=
        "EXCTRN1_GUID"
      ConsumerFileLayerTypeKey="EXCCON_GUID"
      ProducerFileLayerTypeKey="EXPNCN_GUID" />
    </Input>
  </API>
<API Name="manageFgConsumerFileLayerTranslation">
  <Input>
    <FgConsumerFileLayerTranslation
      BusinessProcessName="CustomBP1"
      ConsumerFileLayerTranslationKey=
        "EXCTRN2_GUID"
      ConsumerFileLayerTypeKey="EXCCON_GUID"
      ProducerFileLayerTypeKey="" />
    </Input>
  </API>
<API Name="manageFgProducerFileLayerTranslation">
  <Input>
    <FgProducerFileLayerTranslation
      BusinessProcessName="CustomBP2"
      ProducerFileLayerTypeKey="EXPNCN_GUID"
      ProducerFileLayerTranslationKey="EXPTRAN1_GUID" />
    </Input>
  </API>
</MultiApi>

```

Container File Layer Types for Producer File Structure

To add a container file layer type for the Producer File Structure, three tables must be updated.

Table 1 - FG_P_FLR_TYPE - This table specifies the new file layer type. The value provided in this table for P_FLR_TYPE_KEY will need to be repeated in the FG_P_FLR_PRM_TYPE and FG_P_FLR_TRANS tables to properly configure a custom file layer type. This table contains the following parameters:

Parameter	Example	Where in UI	Type	Max Characters
P_FLR_TYPE_KEY	DR13D_GUID	Not visible	char	24
LAYER_TYPE	FGC_DR13D	Not visible	vvarchar	10
IS_CONTAINER	Y	If Y, PFS configuration requires selection of inner layer type	char	1
CONTAINS_NAME	N	Not visible	char	1
DISP_LABEL	Double Rot13 Decrypt	Not visible	vvarchar	255
DESCRIPTION	Double Rot13 Decrypt	File layer drop down menu	vvarchar	255
LOCKID	0	Not visible	int	5
CREATETS	2008-09-22 17:48:45	Not visible	datetime	19
MODIFYTS	2008-09-22 17:48:45	Not visible	datetime	19
CREATEUSERID	SYSTEM	Not visible	vvarchar	40
MODIFYUSERID	SYSTEM	Not visible	vvarchar	40
CREATEPROGID	XMLMigrator	Not visible	vvarchar	40
MODIFYPROGID	XMLMigrator	Not visible	vvarchar	40

Table 2 - FG_P_FLR_PRM_TYPE – This table specifies the individual parameters for the new producer file layer type. Multiple entries may be made for any file layer type. At least two entries are required for the two parameters that are automatically displayed with standard producer file layer types:

- File name pattern as regular expression
- File name pattern group fact names, comma delimited. Each entry for a file layer type requires a new ordinal, increasing in increments of one. Parameters are displayed in the UI in the order indicated by the ordinal (0 is the first parameter in the UI, 1 is the second, and so on).

This table must be provided a value for the P_FLR_TYPE_KEY parameter that matches the value for the P_FLR_TYPE_KEY parameter in the FG_P_FLR_TYPE table. This table takes the following parameters:

Note: DEFAULT_VALUE and ALLOWABLE_VALUES are required to be in the table, but are not supported in the application.

File Layer Type Parameter #1

Parameter Name	Example	Where Visible in the UI	Type	Max Characters
P_FLR_PRM_TYPE_KEY	DR13D_FP_GUID	Not visible	char	24
P_FLR_TYPE_KEY	DR13D_GUID	Not visible	char	24
ORDINAL	0	Controls order of appearance in UI for PFS configuration	int	9
DESCRIPTION	File name pattern as regular expression	PFS configuration	vvarchar	255
DISPLAY_TYPE	String	Not visible	vvarchar	255

Parameter Name	Example	Where Visible in the UI	Type	Max Characters
DISPLAY_LABEL	File name pattern	Not visible	varchar	255
PARAM_NAME	FILENAME_PATTERN	Not visible	varchar	255
DEFAULT_VALUE	.+	Not visible	varchar	255
ALLOWABLE_VALUES	null	Not visible	varchar	255
LOCKID	0	Not visible	int	5
CREATETS	2008-09-22 17:48:45	Not visible	datetime	19
MODIFYTS	2008-09-22 17:48:45	Not visible	datetime	19
CREATEUSERID	SYSTEM	Not visible	varchar	40
MODIFYUSERID	SYSTEM	Not visible	varchar	40
CREATEPROGID	XMLMigrator	Not visible	varchar	40
MODIFYPROGID	XMLMigrator	Not visible	varchar	40

Note: DEFAULT_VALUE and ALLOWABLE_VALUES are required to be in the table, but are not supported in the application.

File Layer Type Parameter #2

Parameter Name	Example	Where Visible in the UI	Type	Max Characters
P_FLR_PRM_TYPE_KEY	DR13D_FPF_GUID	Not visible	char	24
P_FLR_TYPE_KEY	DR13D_GUID	Not visible	char	24
ORDINAL	1	Controls order of appearance in UI for PFS configuration	int	9
DESCRIPTION	File name pattern group fact names, comma delimited	PFS configuration	varchar	255
DISPLAY_TYPE	String	Not visible	varchar	255
DISPLAY_LABEL	File name pattern fact names	Not visible	varchar	255
PARAM_NAME	FILENAME_PATTERN_FACT_NAMES	Not visible	varchar	255
DEFAULT_VALUE	null	Not visible	varchar	255
ALLOWABLE_VALUES	null	Not visible	varchar	255
LOCKID	0	Not visible	int	5
CREATETS	2008-09-22 17:48:45	Not visible	datetime	19
MODIFYTS	2008-09-22 17:48:45	Not visible	datetime	19
CREATEUSERID	SYSTEM	Not visible	varchar	40
MODIFYUSERID	SYSTEM	Not visible	varchar	40
CREATEPROGID	XMLMigrator	Not visible	varchar	40
MODIFYPROGID	XMLMigrator	Not visible	varchar	40

Table 3 - FG_P_FLR_TRANS – This table specifies the business process that should be used to perform the work necessary to process the new producer container file layer type. This table must be provided a value for the P_FLR_TYPE_KEY parameter that matches the value for the P_FLR_TYPE_KEY parameter in the FG_P_FLR_TYPE table. It takes the following parameters:

Parameter Name	Example	Where Visible in the UI	Type	Max Characters
P_FLR_TRANS_KEY	SDKFJSLKFJ_GUID	Not visible	char	24
P_FLR_TYPE_KEY	DR13D_GUID	Not visible	char	24
BP_NAME	DoubleRot13Decrypt	Not visible	varchar	255
LOCKID	0	Not visible	int	5
CREATETS	2008-09-22 17:48:45	Not visible	datetime	19
MODIFYTS	2008-09-22 17:48:45	Not visible	datetime	19
CREATEUSERID	admin	Not visible	varchar	40
MODIFYUSERID	admin	Not visible	varchar	40
CREATEPROGID	admin	Not visible	varchar	40
MODIFYPROGID	admin	Not visible	varchar	40

Non-Container File Layer Types for Producer File Structure

Creating a non-container file layer type is similar to creating a container file layer type, with two exceptions:

- The value for the IS_CONTAINER parameter in the FG_P_FLR_TYPE should be set to 'N' (No).
- An entry must be made in a new table, FG_C_FLR_TRANS, instead of the FG_P_FLR_TRANS table.

To add a non-container file layer type for the Producer File Structure, three tables must be updated.

Table 1 - FG_P_FLR_TYPE – This table specifies the new producer file layer type, and takes the following parameters:

Parameter Name	Example	Where Visible in the UI	Type	Max Characters
P_FLR_TYPE_KEY	BLOCK_GUID	Not visible	char	24
LAYER_TYPE	FGC_BLOCK	Not visible	varchar	10
IS_CONTAINER	N	If N, PFS configuration recognizes as inner layer type	char	1
CONTAINS_NAME	N	Not visible	char	1
DISP_LABEL	Blocked Text	File layer drop down menu	varchar	255
DESCRIPTION	Blocked Text Description	Not visible	varchar	255
LOCKID	0	Not visible	int	5
CREATETS	2008-09-22 17:48:45	Not visible	datetime	19
MODIFYTS	2008-09-22 17:48:45	Not visible	datetime	19
CREATEUSERID	SYSTEM	Not visible	varchar	40

Parameter Name	Example	Where Visible in the UI	Type	Max Characters
MODIFYUSERID	SYSTEM	Not visible	varchar	40
CREATEPROGID	XMLMigrator	Not visible	varchar	40
MODIFYPROGID	XMLMigrator	Not visible	varchar	40

Table 2 - FG_P_FLR_PRM_TYPE – This table specifies the individual parameters for the new file layer type. Multiple entries may be made for any file layer type. At least two entries are required for the two parameters that are automatically displayed with standard file layer types:

- File name pattern as regular expression
- File name pattern group fact names, comma delimited. Each entry for a file layer type requires a new ordinal, increasing in increments of one. Parameters are displayed in the UI in the order indicated by the ordinal (0 is the first parameter in the UI, 1 is the second, and so on).

This table must be provided a value for the P_FLR_TYPE_KEY parameter that matches the value for the P_FLR_TYPE_KEY parameter in the FG_P_FLR_TYPE table. This table takes the following parameters:

Note: DEFAULT_VALUE and ALLOWABLE_VALUES are required to be in the table, but are not supported in the application.

File Layer Type Parameter #1

Parameter Name	Example	Where Visible in the UI	Type	Max Characters
P_FLR_PRM_TYPE_KEY	BLOCK_FP_GUID	Not visible	char	24
P_FLR_TYPE_KEY	BLOCK_GUID	Not visible	char	24
ORDINAL	0	Controls order of appearance in UI for PFS configuration	int	9
DESCRIPTION	File name pattern as regular expression	PFS configuration	varchar	255
DISPLAY_TYPE	String	Not visible	varchar	255
DISPLAY_LABEL	File name pattern	Not visible	varchar	255
PARAM_NAME	FILENAME_PATTERN	Not visible	varchar	255
DEFAULT_VALUE	.+	Not visible	varchar	255
ALLOWABLE_VALUES	null	Not visible	varchar	255
LOCKID	0	Not visible	int	5
CREATETS	2008-09-22 17:48:45	Not visible	datetime	19
MODIFYTS	2008-09-22 17:48:45	Not visible	datetime	19
CREATEUSERID	SYSTEM	Not visible	varchar	40
MODIFYUSERID	SYSTEM	Not visible	varchar	40
CREATEPROGID	XMLMigrator	Not visible	varchar	40
MODIFYPROGID	XMLMigrator	Not visible	varchar	40

Note: DEFAULT_VALUE and ALLOWABLE_VALUES are required to be in the table, but are not supported in the application.

File Layer Type Parameter #2

Parameter Name	Example	Where Visible in the UI	Type	Max Characters
P_FLR_PRM_TYPE_KEY	BLOCK_FPF_GUID	Not visible	char	24
P_FLR_TYPE_KEY	BLOCK_GUID	Not visible	char	24
ORDINAL	1	Controls order of appearance in UI for PFS configuration	int	9
DESCRIPTION	File name pattern group fact names, comma delimited	PFS configuration	vvarchar	255
DISPLAY_TYPE	String	Not visible	vvarchar	255
DISPLAY_LABEL	File name pattern fact names	Not visible	vvarchar	255
PARAM_NAME	FILE PATTERN NAMES	Not visible	vvarchar	255
DEFAULT_VALUE	null	Not visible	vvarchar	255
ALLOWABLE_VALUES	null	Not visible	vvarchar	255
LOCKID	0	Not visible	int	5
CREATETS	2008-09-22 17:48:45	Not visible	datetime	19
MODIFYTS	2008-09-22 17:48:45	Not visible	datetime	19
CREATEUSERID	SYSTEM	Not visible	vvarchar	40
MODIFYUSERID	SYSTEM	Not visible	vvarchar	40
CREATEPROGID	XMLMigrator	Not visible	vvarchar	40
MODIFYPROGID	XMLMigrator	Not visible	vvarchar	40

Table 3 - FG_C_FLR_TRANS – This table specifies the legitimate mapping between the producer and consumer inner layers. Only layers with a defined mapping can be configured in the routing channel template. It also specifies the business process that should be used to perform the work necessary to translate the producer file layer type into the corresponding consumer file layer type.

This table must be provided a value for the P_FLR_TYPE_KEY parameter that matches the value for the P_FLR_TYPE_KEY parameter in the FG_P_FLR_TYPE table and a value for the C_FLR_TYPE_KEY parameter that matches the value for the C_FLR_TYPE_KEY parameter in the FG_C_FLR_TYPE table. The consumer file layer type specified is required to be a custom type. The table takes the following parameters:

Parameter Name	Example	Where Visible in the UI	Type	Max Characters
C_FLR_TRANS_KEY	asdfnlsadjfs_GUID	Not visible	char	24
P_FLR_TYPE_KEY	BLOCK_GUID	Not visible	char	24
C_FLR_TYPE_KEY	STREAM_GUID	Not visible	char	24

Parameter Name	Example	Where Visible in the UI	Type	Max Characters
BP_NAME	BaseMFT_Preprocessor	Not visible	varchar	255
LOCKID	0	Not visible	int	5
CREATETS	2008-09-22 17:48:45	Not visible	datetime	19
MODIFYTS	2008-09-22 17:48:45	Not visible	datetime	19
CREATEUSERID	admin	Not visible	varchar	40
MODIFYUSERID	admin	Not visible	varchar	40
CREATEPROGID	admin	Not visible	varchar	40
MODIFYPROGID	admin	Not visible	varchar	40

Container File Layer Types for Consumer File Structure

To add a container file layer type for the Consumer File Structure, three tables must be updated.

Table 1 - FG_C_FLR_TYPE – This table specifies the new file layer type, and takes the following parameters:

Parameter Name	Example	Where Visible in the UI	Type	Max Characters
C_FLR_TYPE_KEY	DR13E_GUID	Not visible	char	24
LAYER_TYPE	FGC_DR13E	Not visible	varchar	10
IS_CONTAINER	Y	If Y, PFS configuration requires selection of inner layer type	varchar	10
DISP_LABEL	Double Rot13 Encryption	File layer drop down menu	varchar	255
DESCRIPTION	Double Rot13 Encryption Description	Not visible	varchar	255
LOCKID	0	Not visible	int	5
CREATETS	2008-09-22 17:48:45	Not visible	datetime	19
MODIFYTS	2008-09-22 17:48:45	Not visible	datetime	19
CREATEUSERID	SYSTEM	Not visible	varchar	40
MODIFYUSERID	SYSTEM	Not visible	varchar	40
CREATEPROGID	XMLMigrator	Not visible	varchar	40
MODIFYPROGID	XMLMigrator	Not visible	varchar	40

Table 2 - FG_C_FLR_PRM_TYPE – This table specifies the individual parameters for the new producer file layer type. Multiple entries may be made for any file layer type. At least one entry is required for the parameter that is automatically displayed with standard consumer file layer types, File name format. Each entry for a file layer type requires a new ordinal, increasing in increments of one. Parameters are displayed in the UI in the order indicated by the ordinal (0 is the first parameter in the UI, 1 is the second, and so on). This table must be provided a value for the C_FLR_TYPE_KEY parameter that matches the value for the C_FLR_TYPE_KEY parameter in the FG_C_FLR_TYPE table. This table takes the following parameters:

Note: DEFAULT_VALUE and ALLOWABLE_VALUES are required to be in the table, but are not supported in the application.

Parameter Name	Example	Where Visible in the UI	Type	Max Characters
C_FLR_PRM_TYPE_KEY	DR13E_FF_GUID	Not visible	char	24
C_FLR_TYPE_KEY	DR13E_GUID	Not visible	char	24
ORDINAL	0	Controls order of appearance in UI for PFS configuration	int	9
DESCRIPTION	File name format	PFS configuration	varchar	255
DISPLAY_TYPE	String	Not visible	varchar	255
DISPLAY_LABEL	File name format	Not visible	varchar	255
PARAM_NAME	FILENAME_FORMAT	Not visible	varchar	255
DEFAULT_VALUE	\${ProducerFilename}	Not visible	varchar	255
ALLOWABLE_VALUES	null	Not visible	varchar	255
LOCKID	0	Not visible	int	5
CREATETS	2008-09-22 17:48:45	Not visible	datetime	19
MODIFYTS	2008-09-22 17:48:45	Not visible	datetime	19
CREATEUSERID	SYSTEM	Not visible	varchar	40
MODIFYUSERID	SYSTEM	Not visible	varchar	40
CREATEPROGID	XMLMigrator	Not visible	varchar	40
MODIFYPROGID	XMLMigrator	Not visible	varchar	40

Table 3 - FG_C_FLR_TRANS – This table specifies the business process that should be used to perform the work necessary to process the new consumer file layer type. This table must be provided a value for the C_FLR_TYPE_KEY parameter that matches the value for the C_FLR_TYPE_KEY parameter in the FG_C_FLR_TYPE table. It takes the following parameters:

Parameter Name	Example	Where Visible in the UI	Type	Max Characters
C_FLR_TRANS_KEY	werioweuro_GUID	Not visible	char	24
P_FLR_TYPE_KEY	DR13D_GUID	Not visible	char	24
C_FLR_TYPE_KEY	DR13E_GUID	Not visible	char	24
BP_NAME	DoubleRot13Encrypt	Not visible	varchar	255
LOCKID	0	Not visible	int	5
CREATETS	2008-09-22 17:48:45	Not visible	datetime	19
MODIFYTS	2008-09-22 17:48:45	Not visible	datetime	19
CREATEUSERID	admin	Not visible	varchar	40
MODIFYUSERID	admin	Not visible	varchar	40
CREATEPROGID	admin	Not visible	varchar	40

Non-Container File Layer Types for Consumer File Structure

Creating a non-container file layer type is similar to creating a container file layer type, with two exceptions:

- The value for the IS_CONTAINER parameter in the FG_C_FLR_TYPE should be set to 'N' (No).
- A value must be specified for the P_FLR_TYPE_KEY in the FG_C_FLR_TRANS table.

To add a non-container file layer type for the Producer File Structure, three tables must be updated.

Table 1 - FG_C_FLR_TYPE – This table specifies the new consumer file layer type, and takes the following parameters:

Parameter Name	Example	Where Visible in the UI	Type	Max Characters
C_FLR_TYPE_KEY	STREAM_GUID	Not visible	char	24
LAYER_TYPE	FGC_STREAM	Not visible	varchar	10
IS_CONTAINER	N	If N, CFS configuration recognizes as inner layer type	varchar	10
DISP_LABEL	Streamed Text	File layer drop down menu	varchar	255
DESCRIPTION	Streamed Text Description	Not visible	varchar	255
LOCKID	0	Not visible	int	5
CREATETS	2008-09-22 17:48:45	Not visible	datetime	19
MODIFYTS	2008-09-22 17:48:45	Not visible	datetime	19
CREATEUSERID	SYSTEM	Not visible	varchar	40
MODIFYUSERID	SYSTEM	Not visible	varchar	40
CREATEPROGID	XMLMigrator	Not visible	varchar	40
MODIFYPROGID	XMLMigrator	Not visible	varchar	40

Table 2 - FG_C_FLR_PRM_TYPE – This table specifies the individual parameters for the new consumer file layer type. Multiple entries may be made for any file layer type. At least one entry is required for the parameter that is automatically displayed with standard consumer file layer types, File name format. Each entry for a file layer type requires a new ordinal, increasing in increments of one. Parameters are displayed in the UI in the order indicated by the ordinal (0 is the first parameter in the UI, 1 is the second, and so on). This table must be provided a value for the C_FLR_TYPE_KEY parameter that matches the value for the C_FLR_TYPE_KEY parameter in the FG_C_FLR_TYPE table. This table takes the following parameters:

Note: DEFAULT_VALUE and ALLOWABLE_VALUES are required to be in the table, but are not supported in the application.

Parameter Name	Example	Where Visible in the UI	Type	Max Characters
C_FLR_PRM_TYPE_KEY	STREAM_FF_GUID	Not visible	char	24
C_FLR_TYPE_KEY	STREAM_GUID	Not visible	char	24

Parameter Name	Example	Where Visible in the UI	Type	Max Characters
ORDINAL	0	Controls order of appearance in UI for PFS configuration	int	9
DESCRIPTION	File name format	PFS configuration	varchar	255
DISPLAY_TYPE	String	Not visible	varchar	255
DISPLAY_LABEL	File name format	Not visible	varchar	255
PARAM_NAME	FILENAME_FORMAT	Not visible	varchar	255
DEFAULT_VALUE	\${ProducerFilename}	Not visible	varchar	255
ALLOWABLE_VALUES	null	Not visible	varchar	255
LOCKID	0	Not visible	int	5
CREATETS	2008-09-22 17:48:45	Not visible	datetime	19
MODIFYTS	2008-09-22 17:48:45	Not visible	datetime	19
CREATEUSERID	SYSTEM	Not visible	varchar	40
MODIFYUSERID	SYSTEM	Not visible	varchar	40
CREATEPROGID	XMLMigrator	Not visible	varchar	40
MODIFYPROGID	XMLMigrator	Not visible	varchar	40

Table 3 - FG_C_FLR_TRANS – This table specifies the legitimate mapping between the producer and consumer inner layers. Only layers with a defined mapping can be configured in the routing channel template. It also specifies the business process that should be used to perform the work necessary to translate the producer file layer type into the corresponding consumer file layer type. This table must be provided a value for the P_FLR_TYPE_KEY parameter that matches the value for the P_FLR_TYPE_KEY parameter in the FG_P_FLR_TYPE table and a value for the C_FLR_TYPE_KEY parameter that matches the value for the C_FLR_TYPE_KEY parameter in the FG_C_FLR_TYPE table. It takes the following parameters:

Parameter Name	Example	Where Visible in the UI	Type	Max Characters
C_FLR_TRANS_KEY	asdfnlsadjfs_GUID	Not visible	char	24
P_FLR_TYPE_KEY	BLOCK_GUID	Not visible	char	24
C_FLR_TYPE_KEY	STREAM_GUID	Not visible	char	224
BP_NAME	BaseMFT_Preprocessor	Not visible	varchar	255
LOCKID	0	Not visible	int	5
CREATETS	2008-09-22 17:48:45	Not visible	datetime	19
MODIFYTS	2008-09-22 17:48:45	Not visible	datetime	19
CREATEUSERID	admin	Not visible	varchar	40
MODIFYUSERID	admin	Not visible	varchar	40
CREATEPROGID	admin	Not visible	varchar	40
MODIFYPROGID	admin	Not visible	varchar	40

3. Execute the FileGatewayCustomLayerXAPI business process, specifying CreateCustomLayersSampleBPInput_EX.xml you created in step 2 as the primary document.
4. Stop and restart Sterling File Gateway.
5. Create an RCT using the custom layer types, using the ones you need. In the example XML, the following layers are used:
 - EX Prod Container - outer layer for producer
 - EX Prod Non Container - inner layer for producer
 - EX Con Container - outer layer for consumer
 - EX Con Non-Container - inner layer for consumer

Note: The parameters for the custom layers can include custom parameters. You can create up to eight custom parameters for each custom layer.

6. Now that you have completed the example, you can modify the XML file to create custom file layer types to meet your needs. For practice, substitute each occurrence of EX with your unique characters (represented in the steps as xx), or substituting any descriptive terms. For each one, specify the following:
 - Description - descriptive string for the layer type
 - DisplayLabel - this is what gets displayed in the drop-down box while creating layers
 - IsContainer - "Y" or "N"
 - LayerType - String
 - ProducerFileLayertypeKey - a unique value

Note: For a Layer, the value under “DisplayLabel” is displayed in the UI. For a parameter, the value under “Description” is displayed in the UI.

7. Substitute business processes that you write to translate one file type for another for the following business processes in the XML file:
 - CustomBP1 - If creating XX Con Container, substitute the business process you want to use for translation for CustomBP1.
 - CustomBP2 - If creating XX Prod Container, substitute the business process you want to use for translation for CustomBP2.
 - CustomBP3 - If creating XX Prod Non Container and XX Con Non Container, substitute the business process you want to use for translation for CustomBP3.
8. Save the XML file as CreateCustomLayersSampleBPInput_xx.xml.
9. Execute the FileGatewayCustomLayerXAPI business process, specifying CreateCustomLayersSampleBPInput_xx.xml as the primary document.
10. Stop and Restart Sterling File Gateway.
11. Create an RCT using the custom layer types you need. In the example XML, the following layers are used:
 - xx Prod Container - outer layer for producer
 - xx Prod Non Container - inner layer for producer
 - xx Con Container - outer layer for consumer
 - xx Con Non-Container - inner layer for consumer

Note: The parameters for some of the custom layers include custom parameters with the changes you made to the labels.

Note: You cannot move custom file layer types from one system to another. You must create any custom file layer types you require in each system separately.

Edit Custom File Layer Types

Integration Architects may identify revisions needed for the custom file layer types, and request the System Administrator make the changes.

This procedure is for advanced users with a knowledge of XAPIs and APIs. The java docs that support this functionality are located at http://lonely/api_javadocs, Package com.sterlingcommerce.fg.xapi.api.

To edit a custom file layer type:

1. Open a text or XML editor.
2. Enter text to edit the custom file layer type by specifying the original primary key for the custom file layer type along with the new values for whatever he wants to change, as in the following example:

```
<?xml version="1.0" encoding="UTF-8"?>
<MultiApi>
  <API Name="manageFgConsumerFileType">
    <Input>
      <FgConsumerFileType
        ConsumerFileTypeKey="DR13E_GUID"
        Description="NEW Double Rot13 Encryption Description"
        DisplayLabel="NEW Double Rot13 Encryption">
        <FgConsumerFileTypeParameterTypeList
          TotalNumberOfRecords="2">
          <FgConsumerFileTypeParameterType
            ConsumerFileTypeParameterTypeKey="DR13E_CH_GUID"
            Description="NEW Encryption Charm Description"
            DisplayLabel="NEW Encryption Charm"
            ParameterName="NewEncryptionCharm"/>
          <FgConsumerFileTypeParameterType
            ConsumerFileTypeParameterTypeKey="DR13E_FF_GUID"
            Description="NEW File name format"
            DisplayLabel="NEW File name format"/>
          </FgConsumerFileTypeParameterTypeList>
        </FgConsumerFileType>
      </Input>
    </API>
  </MultiApi>
```

3. Save the XML file to a local directory.
4. Select **Tools > B2B Console > Business Processes > Manager**.
5. Search for the FileGatewayCustomLayerXAPI business process.
6. Select **Execution Manager** to execute the FileGatewayCustomLayerXAPI business process, specifying the XML file from step 3 as the document.
7. The B2B Console executes the business process and updates the custom file layer type in the database.

8. Stop and Restart Sterling File Gateway to use the revised custom file layer types.

Add a Parameter to a Custom File Layer Type

Integration Architects may identify additional parameters needed for the custom file layer types, and request the System Administrator make the changes.

This procedure is for advanced users with a knowledge of XAPIs and APIs. The java docs that support this functionality are located at http://lonely/api_javadocs, Package com.sterlingcommerce.fg.xapi.api.

To add a parameter to a custom file layer type:

1. Open a text or XML editor.
2. Enter text to add a parameter to the custom file layer type by specifying the original primary key for the custom file layer type along with the new parameter values for the file layer type, as in the following example:

```
<?xml version="1.0" encoding="UTF-8"?>
<MultiApi>
<API Name="manageFgConsumerFileLayerType">
<Input>
<FgConsumerFileLayerType ConsumerFileLayerTypeKey="DR13E_GUID">
<FgConsumerFileLayerParameterTypeList>
<FgConsumerFileLayerParameterType
  ConsumerFileLayerParameterTypeKey="FLAVOR_GUID"
  Description="Encryption Flavor Description"
  DisplayLabel="Encryption Flavor"
  ParameterName="EncryptionFlavor" Ordinal="2"/>
</FgConsumerFileLayerParameterTypeList>
</FgConsumerFileLayerType>
</Input>
</API>
</MultiApi>
```

3. Save the XML file to a local directory.
4. Select **Tools > B2B Console > Business Processes > Manager**.
5. Search for the FileGatewayCustomLayerXAPI business process.
6. Select **Execution Manager** to execute the FileGatewayCustomLayerXAPI business process, specifying the XML file from step 3 as the document.
7. The B2B Console executes the business process and updates the custom file layer type in the database.
8. Stop and Restart Sterling File Gateway to use the revised custom file layer types.

Delete a Parameter from a Custom File Layer Type

Integration Architects may identify parameters no longer needed or valid for the custom file layer types, and request the System Administrator delete the parameter from the custom file layer.

This procedure is for advanced users with a knowledge of XAPIs and APIs. The java docs that support this functionality are located at http://lonely/api_javadocs, Package com.sterlingcommerce.fg.xapi.api.

To delete a parameter from a custom file layer:

1. Open a text or XML editor.

2. Enter text to remove the parameter from the custom file layer type by specifying the original primary key along with the parameter value that should be removed from the file layer type, as in the following example:

```
<?xml version="1.0" encoding="UTF-8"?>
<MultiApi>
<API Name="manageFgConsumerFileLayerType">
<Input>
<FgConsumerFileLayerType ConsumerFileLayerTypeKey="DR13E_GUID">
<FgConsumerFileLayerParameterTypeList>
<FgConsumerFileLayerParameterType
  ConsumerFileLayerParameterTypeKey="FLAVOR_GUID"
  Operation="Delete"/>
</FgConsumerFileLayerParameterTypeList>
</FgConsumerFileLayerType>
</Input>
</API>
</MultiApi>
```

3. Save the XML file to a local directory.
4. Select **Tools > B2B Console > Business Processes > Manager**.
5. Search for the FileGatewayCustomLayerXAPI business process.
6. Select **Execution Manager** to execute the FileGatewayCustomLayerXAPI business process, specifying the XML file from step 3 as the document.
7. The B2B Console executes the business process and updates the custom file layer type in the database.
8. Stop and Restart Sterling File Gateway to use the revised custom file layer types.

Delete a Custom File Layer Type

Integration Architects may identify custom file layer types that are no longer needed or valid, and request the System Administrator delete them.

This procedure is for advanced users with a knowledge of XAPIs and APIs. The java docs that support this functionality are located at http://lonely/api_javadocs, Package com.sterlingcommerce.fg.xapi.api.

To delete a custom file layer type:

1. Open a text or XML editor.
2. Enter text to delete the custom file layer type by specifying the original primary key along with the “Delete” operation, as in the following example:

```
<?xml version="1.0" encoding="UTF-8"?>
<MultiApi>
<API Name="manageFgConsumerFileLayerType">
<Input>
<FgConsumerFileLayerType ConsumerFileLayerTypeKey="DR13E_GUID"
  Operation="Delete"/>
</Input>
</API>
</MultiApi>
```

3. Save the XML file to a local directory.
4. Select **Tools > B2B Console > Business Processes > Manager**.

5. Search for the FileGatewayCustomLayerXAPI business process.
6. Select **Execution Manager** to execute the FileGatewayCustomLayerXAPI business process, specifying the XML file from step 3 as the document.
7. The B2B Console executes the business process and deletes the custom file layer type in the database.
8. Stop and Restart Sterling File Gateway.

Route Provisioner Help

About Partner Users

Partner Users are the user accounts associated with partners, and are also referred to as users. Users are managed by System Administrators in Sterling Integrator. Partner users created in Sterling File Gateway are managed in Sterling File Gateway. If you delete a partner user from Sterling File Gateway, only the default user account in Sterling Integrator is deleted. Any additional user accounts in Sterling Integrator are not deleted. To delete other user accounts, go to **Tools > B2B Console > Accounts > User Accounts**.

About Partners (Build 5006 or Later)

Sterling File Gateway enables the exchange of files between partners through routing channels that are set up to connect specific partners. Partners that send files into Sterling File Gateway are referred to as producers, and those that retrieve files are referred to as consumers. A partner can be a producer, a consumer, or both from an operational standpoint.

Route Provisioners create, edit, and delete partners. Before partners can be created, though, it is important that the System Administrator configure any communications adapters the partners may need to use so that permissions are set correctly.

Each partner is associated with exactly one community.

If consumer partners will use SFTP, create the remote SSH Profile before creating the partners.

If partners will use PGP, perform the following before creating the partners:

- Install PGP server
- Start CLA2Client.jar process
- Modify PGPCmdlineService in B2B Console
- Create a PGP Profile named AFTPGProfile in the B2B Console

When a partner is created in Sterling File Gateway, the following objects are created to support the partner:

- A Sterling Integrator user account
- A Sterling Integrator mailbox using the partner name
- A Sterling Integrator virtual root for the user and mailbox

The user account is automatically assigned to the File Gateway Partners Users group, or the custom group which is set as default group in filegateway_ui.properties file. The user group users are assigned to has specific permissions that are granted to the users. See *About Permissions*.

If the partners will be authenticated outside of Sterling File Gateway, the System Administrator must establish your authentication server and Authentication Management System before you create the partners. Do not remove or reorder the authentication servers in the customer_overrides.properties file after creating partners associated with them.

To apply a password policy other than the default password policy provided in Sterling Integrator, the System Administrator must create the new policy in Sterling Integrator before you create the partners. Select the new policy from the list when creating the partners.

Create a Partner (Build 5006 or Later)

You can create partners in a test system and migrate them to a production system using Export and Import, or you can create partners directly in a production system. To avoid conflicts between systems, you should create partners in either the source or target system of Export/Import, not both.

To create a partner:

1. From the main menu, select **Participants > Partners**
2. Click **Create**.
3. From the **Community** list, select the community to which this Partner will belong.
4. Complete the steps in the wizard to enter the information for the Partner.

Field	Description
Partner Name	A unique name with a maximum of 100 characters. Spaces are allowed. Two partners cannot have the same Partner Name. You cannot modify the Partner Name after the partner is created.
Partner Code	<p>The Partner Code field is optional. If not specified, a Partner Code is generated based on the Partner Name, up to the first 24 alphanumeric characters, when the partner is created.</p> <p>A maximum of 24 alphanumeric characters. Only characters from the US-ASCII alphabet, numbers, and special characters of underscore, dash and period are permitted. Two partners cannot have the same Partner Code. You cannot modify the Partner Code after the partner is created.</p> <p>Note: If you specify a Partner Code different from the Partner Name, do not specify ProducerCode or ConsumerCode in the root portion of the mailbox path when you create a routing channel. A mailbox would be created that cannot be accessed by users to download files.</p> <p>A consumer mailbox path pattern of /\${ConsumerName}/from_\${ProducerCode} or a producer mailbox path of /\${ProducerName}/to_\${ConsumerCode} is valid.</p>
Address	Address of the Partner. Optional.
City	City of the Partner. Optional.
State	State or province the Partner operates in. Optional.
Zip or Postal Code	Postal code for the Partner. Optional.

Field	Description
Telephone Number	Phone contact number for the Partner. Required.
Country	Select from the list. Required. Default is UNITED STATES.
Time Zone	Select from the list. Required. Default is (GMT-05:00) Eastern Time (US & Canada).
Email Address	E-mail address of the Partner. Required.

5. Complete the steps in the wizard to create a user account:

Field	Description
Authentication Type	Valid values are: <ul style="list-style-type: none"> • Local • External - authenticated outside Sterling File Gateway For External Authentication Type, select the server that will perform authentication in the Authentication Host field.
User Name	A minimum of 5 characters and maximum of 36 characters. No spaces, tabs, or the following characters: !@#%^*()+?,<>[]{} '";
Password	A maximum number of 100 characters. Must comply with rules in the selected password policy, if one is specified. Disabled if Authentication Type is External.
Password Policy	Populated with values of password policy from Sterling Integrator. Default is blank (none). Disabled if Authentication Type is External.
Authentication Host	Populated with values from the customer_overrides.properties file. If you are using Sterling Secure Proxy for authentication, the settings in Sterling Secure Proxy override the entry here. Disabled if Authentication Type is Local.
Session Timeout (in minutes)	Number of minutes of inactivity before session ends. Default is 15. To change the default, System Administrators can edit customer_overrides.properties to set <code>filegateway_ui.fgOnboardingDefaultSessionTimeoutInMinutes = <new value></code>
First Name	A maximum number of 64 characters.
Last Name	A maximum number of 64 characters.

6. Specify the partner role:

Field	Description
Partner is a Consumer of Data	Select if the partner receives data from the Router. Valid for the following partner conditions: <ul style="list-style-type: none"> • Initiates Protocol Connections • Listens for SSH/SFTP Connections • Listens for FTP Connections • Listens for Connect:Direct Connections • Listens for FTPS Connections • (Any custom protocols that have been added by the administrator)

Field	Description
Partner is a Producer of Data	Select if this partner initiates protocol connections and produces data.

7. Answer "Will Partner use either SSH/SFTP or SSH/SCP protocol to initiate connections?"
Select **Yes** or **No**. Default is No. If Yes, you can specify if Partner will use an Authorized User Key to authenticate.
8. Answer "Will Partner use an Authorized User Key to authenticate?"
Select **Yes** or **No**. Default is No. If Yes, you must provide the Authorized User Key.
9. Confirm the Partner information and save.
10. Close the Communities window, but do not log out.
11. On the Partner page, click **Refresh** below the Partners list. The new Partner is listed.

For each partner, one user account is automatically created and associated with the default user group. For additional users, create the user account in Sterling Integrator, then associate it with the partner identity and the appropriate user group.

By default, Partners are automatically associated with the File Gateway All Partners partner group. System Administrators can change the default user group in customer_overrides.properties by setting the property fgOnboardingDefaultUserGroupId.

Edit a Partner (Build 5006 or Later)

You should only edit partners during a time of no activity, such as a maintenance window. You can disable routing for maintenance by disabling the routing rule (FileGatewayRoutingRule) or by disabling the routing schedules:

- MailboxEvaluateAllAutomaticRules
- MailboxEvaluateAllAutomaticRulesSubMin

To edit a partner:

1. From the main menu, select **Participants > Partners**.
2. Select the partner in the list. To select from the list, type characters and **Enter** to narrow the list to items containing those characters. Scroll to select an item from the list. Backspace to remove characters and **Enter** to return to the full list.
3. Click **Edit**. The following fields cannot be edited:
 - Partner Name
 - Partner Code
 - User Name

Note: The Edit button is only enabled if the Partner was created in Sterling File Gateway or migrated from AFT or Connect:Enterprise for UNIX.

4. Make the desired changes and click **Save**.
5. Close the window to return to Sterling File Gateway, but do not log out.

Reports and searches for operations involving the Partner are unaffected by editing the partner.

Create a Routing Channel (Build 5006 or Later)

To create a routing channel:

1. From the Routes menu, select **Channels**.
2. Click **Create**, or right-click on the page and click **Create Routing Channel**.
3. Select a routing channel template from the list. If you select a static template, select a producer and a consumer. If you select a dynamic template, select only a producer.

To create multiple routing channels with the same template, producer, and producer mailbox, use a static template where the ConsumerName or ConsumerCode fact is specified in all producer file structures at the outer file layer, or the second file layer for ZIP files.

To select from the lists, type characters in the box to narrow the list to items containing these characters. Scroll to select an item from the list. Backspace to remove the characters and to return to the full list. Specifying more field values narrows your search.

Only partner users with the File Gateway Auto-grant Mailbox permission are given permission to partner mailboxes specified in a routing channel.

Operator Help

Search for a File (Build 5006 or Later)

The **Basic Search** page enables you to search for a file based on criteria you select. The **Advanced Search** page provides more options for criteria.

You can specify more criteria to narrow your results, or fewer criteria to widen your results. For any field, leave blank to select all values.

1. On the **Search Criteria** tab, enter the basic search criteria. This page is useful for finding files in major categories. To search for more-specific files, select **Advanced Search**. All of the criteria on the Basic Search page are also available on the Advanced Search page, along with many more criteria.
2. For **Producer**, select from the list or type the producer name. Leave this field blank to search for files from all producers.
3. For **Consumer**, select from the list or type the consumer name. Leave this field blank to search for files from all consumers.
4. For **Status**, select from:
 - Started - includes Started, Determining Routes, and Routing
 - Succeeded - includes Routed (arrived files, routes and deliveries)
 - Failed - includes Failed

Leave blank to search for files with any status.

5. For **Protocol**, select from:
 - FTP
 - SFTP
 - Connect:Direct

Leave blank to search for files using any protocol.

6. For **Original File Name**, type the full or partial name of the file the producer sent. This field is case-insensitive. File names containing the string will be matched in the search. Leave this field blank to search for all file names.
7. Click **Find** to initiate the search.

The Search Results tab opens and the Arrived File pane is displayed with results matching all of your criteria. A maximum of 1000 files (or another limit set by your System Administrator) is displayed. The following information is provided for each arrived file:

- Reviewed
 - Status
 - Producer
 - File Name
 - Discovery Time
8. If more than 1000 files (or another limit set by your System Administrator) match your criteria, a message is displayed indicating that you have more than 1000 matches and need to narrow your search. The first 1000 files are displayed.
 9. Sort the results by clicking on any column header. Click again to change from descending order to ascending order. The default sort is by **Discovery Time**, in descending order.
 10. To search for a file with more specific criteria, click on **Advanced Search**.
 11. Select criteria in the Arrived File section from the following fields:

Field	Description
Producer	The partner who creates and sends files. Select from the list. Type the producer name to obtain unpurged data for producers who have been deleted. Leave blank to search for files from all producers.
Producer Code	The code for the producer. Select from the list. Type the producer code to obtain unpurged data for producers who have been deleted. Leave blank to search for files from all producers.
Producer Group	The group the producer is a member of. Select from the list. Type the producer group to obtain unpurged data for groups that have been deleted. Leave blank to search for files from all groups.
IP Address	The host IP address of the producer.
User	User ID of the protocol authentication.
Protocol	Select from: <ul style="list-style-type: none"> • FTP • SFTP • Connect:Direct
Original File Name	Full or partial name of the file the producer sent. This field is case-insensitive.
File Size (Min) (kilobytes)	Smallest file size to search for.
File Size (Max) (kilobytes)	Largest file size to search for.
Status	Select from: <ul style="list-style-type: none"> • Started - includes Started, Determining Routes, and Routing • Succeeded - includes Routed (arrived files, routes and deliveries) • Failed - includes Failed

Field	Description
	This is the status of the Arrived File.
Reviewed	<p>Select to:</p> <ul style="list-style-type: none"> • Show both reviewed and unreviewed arrived files. • Show only unreviewed arrived files. • Show only reviewed arrived files. <hr/> <p>Note: Use these options to manage your review process of file transfers.</p>
Message ID	The numeric message ID of the arrived file.
Mailbox Path	Full or partial name for the mailbox directory path of the arrived file. This field is case-insensitive.
Dataflow ID	The numeric dataflow ID for the file.
Date (From)	Click on the calendar icon to select the date to begin the search.
Date (To)	Click on the calendar icon to select the date to end the search.
Time (From)	The arrival hour, in 24-hour format, to begin the search. If the date fields are left blank, the time fields are ignored. If 0 is entered, records for all times are returned.
Time (To)	The arrival hour, in 24-hour format, to end the search. If the date fields are left blank, the time fields are ignored. If 0 is entered, records for all times are returned.

12. Select criteria in the Route section from the following fields:

Field	Description
Consumer	The partner who receives files directly or in a mailbox. Select from the list. Type the consumer name to obtain unpurged data for consumers who have been deleted. Leave blank to search for files from all consumers.
Consumer Code	The code for the consumer. Select from the list. Type the consumer code to obtain unpurged data for consumers who have been deleted. Leave blank to search for files from all consumers.
Consumer Group	The group the consumer is a member of. Select from the list. Type the consumer group to obtain unpurged data for groups that have been deleted. Leave blank to search for files from all groups.
Template Name	<p>Routing Channel Template applied to the file transfer.</p> <hr/> <p>Note: Finds files that successfully routed based on the template.</p>
Facts	<p>Select from:</p> <ul style="list-style-type: none"> • ConsumerCode • ConsumerFilename • ConsumerName

Field	Description
	<ul style="list-style-type: none"> • ConsumerPgpExtension • ProducerCode • ProducerFilename • ProducerName <hr/> <p>Note: The list will also include any custom facts defined by the Integration Architect, with a prefix of "my".</p>
Fact Value	Value for the fact selected above. Required when Fact is selected. This field is case-insensitive.
Status	Select from: <ul style="list-style-type: none"> • Started - includes Started, Determining Delivery, and Delivering • Succeeded - includes Complete • Failed - includes Failed This is the status of the Route.

13. Select criteria in the Delivery section from the following fields:

Field	Description
IP Address	Host IP address for the delivered file. Do not use with In Mailbox specified as the protocol.
User	User ID of the protocol authentication. Do not use with In Mailbox specified as the protocol.
Protocol	Delivered file protocol. Select from: <ul style="list-style-type: none"> • FTP • Inbound FTP • Outbound FTP • SFTP • Inbound SFTP • Outbound SFTP • Connect:Direct • Inbound Connect:Direct • Outbound Connect:Direct • In Mailbox (for files that have not been retrieved)
Delivered File Status	Select from: <ul style="list-style-type: none"> • Started - includes Transforming, Delivering, and Redelivery • Succeeded - includes Complete • Failed - includes Failed This is the status of the delivered file.
Delivered File Name	Full or partial name of the delivered file. This field is case-insensitive.
File Size (Min) (kilobytes)	Smallest file size to search for.
File Size (Max) (kilobytes)	Largest file size to search for.
Message ID	The numeric message ID of the delivered file.

Field	Description
Mailbox Path	Full or partial name for the mailbox directory path of the delivered file. This field is case-insensitive.
Date (From)	Click on the calendar icon to select the date to begin the search.
Date (To)	Click on the calendar icon to select the date to end the search.
Time (From)	The delivery hour, in 24-hour format, to begin the search. If the date fields are left blank, the time fields are ignored. If 0 is entered, records for all times are returned.
Time (To)	The delivery hour, in 24-hour format, to end the search. If the date fields are left blank, the time fields are ignored. If 0 is entered, records for all times are returned.

Note: Searches using the characters `_` and `%` (underscore and percent) may produce more results than expected, because these characters are interpreted as wildcards. Specify more characters to narrow your search, or visually search for the matches within the returned results.

Search results

In the search results for arrived files, the Producer Name is listed, if available. If Producer Name is not available, the Producer Code is listed in italics.

In the search results for routes, the Consumer Name is listed, if available. If Consumer Name is not available, the Consumer Code is listed in italics.

Where an arrived file is routed to multiple consumers, an individual route record will be created for each consumer. Search criteria that include a consumer specification will return arrived files that included the specified consumer in one of the resulting routes.

Troubleshoot and Resolve Blank Arrived Files

If an arrived file is blank, with no original file name or producer name, a system failure may have caused the Sterling File Gateway router to be unable to process the incoming message. There are several known situations that cause this:

- When a protocol client that uploads files to Sterling File Gateway performs renaming of files upon transfer.
 - **Why this happens** - the original file is deleted and renamed to a file with a new name. If Sterling File Gateway tries to route the file with the original name that was deleted, a failed blank arrived file is created. This happens because the file got deleted before information like producer, original file name and so forth are retrieved.
 - **What to do** - click on the blank arrived file. In the details, locate the message Id. Go to **Tools > B2B Console > Correlation Search** and enter the message Id and click **Find**. In the results, locate the file name and mailbox path to determine the producer. Contact the producer to confirm that their client that uploads files is set to rename files upon transfer. Ensure that the file with the new name is routed correctly.
- When a file is sent and immediately sent again, overwriting the first.

- **Why this happens** - **Allow duplicates**=false in the Mailbox configuration. The second file overwrites and deletes the first file. If this happens before Sterling File Gateway reads the data about this file, then you have a blank route.
- **What to do** - this is harmless if both files contain the same data because the second file is routed correctly. If multiple files with the same name and different data are to be sent to the system, configure the system so these files go to different mailboxes, or set **Allow duplicates**=true.
- When a system configured with a redundant Oracle RAC has a node failure.
 - **Why this happens** - the arrived file temporarily cannot see the message because of the failure and creates a blank arrived file to show that something was supposed to happen, and then immediately fails the arrived file.
 - **What to do** - replay the arrived file to get it to reroute. If this does not work, the message was deleted before the replay. Investigate the database, the logs, and the Activity list to find which message did not get added or got deleted prematurely. Determine the producer and ask them to re-send the file.
- Both AFT and Sterling File Gateway are enabled at the same time.
 - **Why this happens** - no AFT Routing Rules should be active after Sterling File Gateway is installed.
 - **What to do** - when Sterling File Gateway is installed, AFT is disabled. Do not re-enable AFT Routing Rules.

Failed Routes for Renamed Files

If Sterling File Gateway tries to route a file that has been deleted from the mailbox, it results in a failed route. In the Arrived File list, click on the Failed route to view the Arrived File Event details. The following event message is listed:

```
FG-0450 ERROR: Producer Mailbox Message Does Not Exist.
```

Click on the Dataflow link in the details.

This can happen when a protocol client that uploads files to Sterling File Gateway performs renaming of files upon transfer.

System Administrators can specify the temporary file name pattern in the ignoreFilename parameter as a regex expression in filegateway.properties. This causes the specified patterns to be listed in the Arrived File list as Ignored. Multiple file name patterns can be specified.

System Admin

Implement AS2

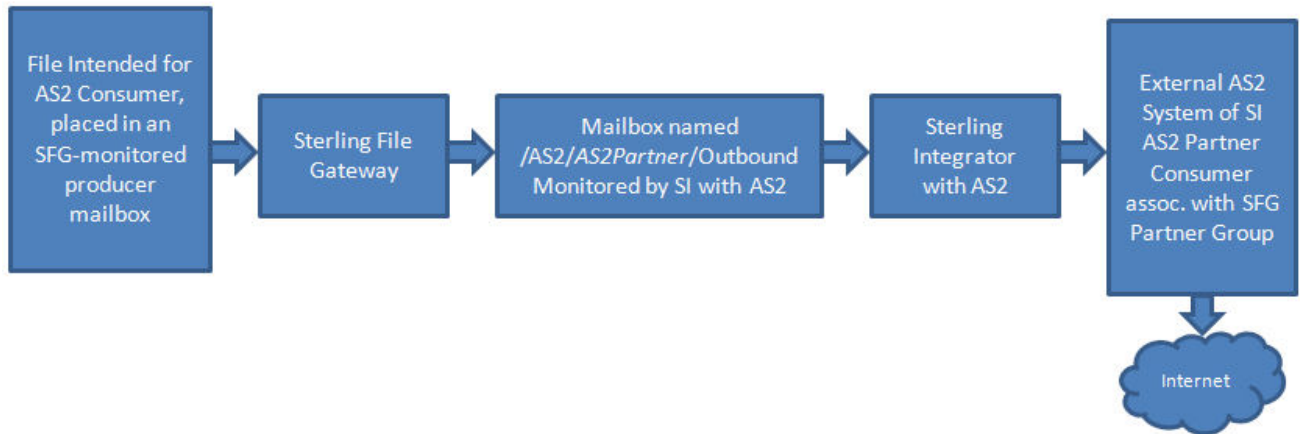
You can use Sterling File Gateway as a routing mechanism to send and receive AS2 messages through Sterling Integrator. Applicability Statement 2 (AS2) EDIINT (AS2) technology is a protocol for securely exchanging data with non-repudiation of receipt over the Internet.

Sterling Integrator with AS2 is a message management system enabling the exchange of a variety of documents between trading partners using secure AS2 EDIINT technology. Sterling Integrator with AS2 uses the Internet as a transport mechanism, ensures privacy and security of documents exchanged, and provides a means of non-repudiation. Using AS2 with Sterling Integrator and Sterling File Gateway extends your investments by sending and receiving documents and interacting with your existing processes. Basically, you put a document into a specific mailbox to send it to a specific partner and you receive documents from partners in partner-specific mailboxes.

To use the features described in this topic, you must have a license for Sterling Integrator with an additional license for AS2 and for Sterling File Gateway, and have them both installed.

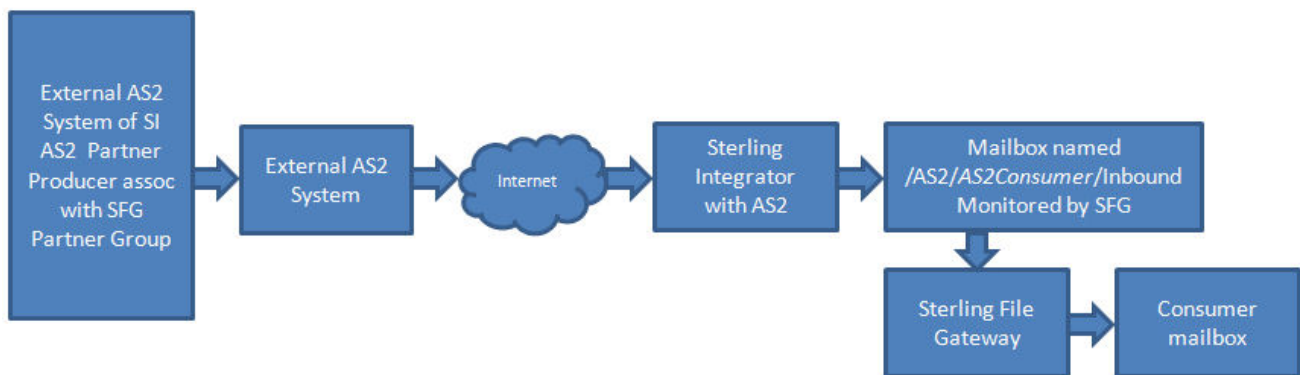
For Sterling File Gateway to interoperate with Sterling Integrator using AS2, specific mailboxes are configured as integration points. The following diagram shows the flow of outbound AS2 messages between Sterling File Gateway and other systems.

AS2 Outbound Scenario



The following diagram shows the flow of inbound AS2 messages between Sterling File Gateway and other systems.

AS2 Inbound Scenario



Notice that in each of these scenarios, the mailbox path is the integration point between Sterling File Gateway and Sterling Integrator. Specifying the correct mailbox paths in the routing channel templates establishes the connection between the systems.

Prerequisites

Performing this procedure requires knowledge of Sterling Integrator with AS2.

You should be familiar with configuring and verifying an AS2 setup prior to configuring Sterling File Gateway with the AS2 partner.

The AS2 partner must be setup to use mailboxes instead of the file system.

An AS2 transfer from the AS2 Partner should be verified to successfully transfer from the AS2 Partner's mailbox prior to configuring Sterling File Gateway with the AS2 partner.

For more information, see [Using AS2 and the AS2 Edition](#) in the online library.

Use of Sterling File Gateway is not strictly limited to the selections provided in this procedure. To simplify your initial use of AS2 with Sterling File Gateway, some suggested selections are provided.

Procedure

To set up Sterling File Gateway for file transfers using AS2:

1. From within Sterling File Gateway, select **Tools > B2B Console**.
2. In Sterling Integrator, select **Trading Partners > AS2** to create an AS2 partner. For example, you may create a partner name of *AS2Partner*. You can use any valid user name that is not already in use in Sterling File Gateway. During the AS2 profile creation:
 - a) On the **Identification** page, select **Store AS2 Messages in a Mailbox**.
 - b) On the **Mailbox** page, select **Use Default Inbound/Outbound Mailboxes**.

This selection will create a mailbox path of

```
/AS2/AS2Partner/Inbound
```

and

```
/AS2/AS2Partner/Outbound
```

These mailbox paths will need to be referenced in the routing channel templates.

Note: Partners created in the AS2 Edition do not belong to any Sterling File Gateway Community, and therefore cannot utilize PGP encryption, which relies on communities for key management.

3. Update the AS2 user account created during the AS2 Partner creation. In Sterling Integrator, the user account in the example will be named: *AS2Partner_B2B*.
 - a) Select **Accounts > User Accounts**. Locate and edit the AS2 user account.
 - b) Add the *AS2Partner* user to the File Gateway Partner Users group.
 - c) To enable this partner to access myFileGateway, grant access to the /Inbound and /Outbound mailboxes listed in step 2b.
 - d) On the **User Information** screen, select the *AS2Partner* in the Identity drop-down list, and save.

Note: The AS2 partner cannot be edited from the Sterling File Gateway Community or Partner management screens and must be edited from the AS2 partner management screens in Sterling Integrator.

For more information, see [Using AS2 and the AS2 Edition](#) in the online library.

4. Optionally, you may find it useful to create a Sterling File Gateway partner group to organize your AS2 partners. For example, create a group named AS2 Partners. In Sterling File Gateway, select **Participants > Groups** and click **Create**.
5. Add *AS2Partner* to a Sterling File Gateway group.
 - a) Select **Participants > Groups**. Click **Add Partners**.
 - b) Select the AS2 partner and a Sterling File Gateway Group, for example AS2 Partners. Click **Execute**.
6. Have the Integration Architect create a routing channel template configured to route inbound data received using AS2 or the outbound data sent to AS2.
7. Have the Route Provisioner create routing channels configured to use the AS2 routing channel templates.

Partners can utilize AS2 for inbound or outbound messages.

Note: Messages received using AS2 will always have a file name of “Attachment”. If you have set the following property:

```
mailbox.disallowDuplicateMessages=true
```

as recommended, messages can be overridden by subsequent messages with the same name. To avoid this, set the property to:

```
mailbox.disallowDuplicateMessages=false
```

This setting applies to all of your file transfers, not just the AS2 ones, so consider the implications before changing this property.

Note: You can track the progress of the file transfer delivery to the mailbox. In the Arrived File details, locate the event code FG_0425. Select the associated Dataflow hyperlink to obtain additional details. Select the workflow ID to view details in the AS2 subsystem with details about the original document and movement to the designated mailbox.

Note: Logs for Sterling File Gateway and myFileGateway will not include information about AS2 transfers. Sterling File Gateway routes the data from one mailbox to another and does not initiate or participate in the AS2 transfer.

Integration Architect

Create an AS2 Outbound Routing Channel Template

Use of Sterling File Gateway is not strictly limited to the selections provided in this procedure. To simplify your initial use of AS2 with Sterling File Gateway, some suggested selections are provided.

To create a simple routing channel template for use with outbound AS2 messages:

1. Select **Routes > Templates**.
2. Click **Create**.
3. Type a name, for example AS2 Outbound.
4. Select Static.
5. Do not specify any special character handling.
6. For Producer Groups, select All Partners.
7. For Consumer Groups, select AS2 Partners.
8. For the Producer Mailbox Path, type:

```
/${ProducerName}
```

9. For Producer File Structures, select Unknown and use .+ as the regular expression. No facts are needed.
10. For Delivery Channel Template, Consumer Mailbox Path, type:

```
/AS2/${ConsumerName}/Outbound
```

Note: Specifying this format for the path matches the mailbox paths created when the System Administrator creates AS2 partners with the **Use Default Inbound/Outbound Mailboxes** option.

11. For Consumer File Structure, select Unknown, with a file name format of \${ProducerFilename}.

Create an AS2 Inbound Routing Channel Template

Use of Sterling File Gateway is not strictly limited to the selections provided in this procedure. To simplify your initial use of AS2 with Sterling File Gateway, some suggested selections are provided.

To create a simple routing channel template for use with inbound AS2 messages:

1. Select **Routes > Templates**.
2. Click **Create**.
3. Type a name, for example AS2 Inbound.
4. Select Static.
5. Do not specify any special character handling.
6. For Producer Groups, select AS2 Partners.
7. For Consumer Groups, select All Partners.
8. For the Producer Mailbox Path, type:

```
/AS2/${ProducerName}/Inbound
```

Note: Specifying this format for the path matches the mailbox paths created when the System Administrator creates AS2 partners with the **Use Default Inbound/Outbound Mailboxes** option.

9. For Producer File Structures, select Unknown and use .+ as the regular expression. No facts are needed.
10. For Delivery Channel Template, Consumer Mailbox Path, type:

```
/${ConsumerName}/Inbox
```

and check the box to create mailbox on demand.

11. For Consumer File Structure, select Unknown, with a file name format of \${ProducerFilename}.

Route Provisioner

Create an AS2 Outbound Routing Channel

Use of Sterling File Gateway is not strictly limited to the selections provided in this procedure. To simplify your initial use of AS2 with Sterling File Gateway, some suggested selections are provided.

To create a routing channel for use with outbound AS2 messages:

1. Select **Routes > Channels**.
2. Click **Create**.
3. For Routing Channel Template, select AS2 Outbound.
4. For Producer, select the external AS2 partner that will send the file. This is not required to be an AS2 partner.
5. For Consumer, select the AS2 partner that is the recipient of the file.

Create an AS2 Inbound Routing Channel

Use of Sterling File Gateway is not strictly limited to the selections provided in this procedure. To simplify your initial use of AS2 with Sterling File Gateway, some suggested selections are provided.

To create a routing channel for use with inbound AS2 messages:

1. Select **Routes > Channels**.
2. Click **Create**.
3. For Routing Channel Template, select AS2 Inbound.
4. For Producer, select the external AS2 partner that will send the file.
5. For Consumer, select the recipient of the file. This is not required to be an AS2 partner.

myFileGateway

Retrieve a File Using *myFileGateway*

In *myFileGateway*, Partners retrieve a file from a mailbox.

To retrieve a file:

1. From *myFileGateway*, click on the Download tab.
2. Select a file from the list of files. Only files you have permission to download are provided in the list. You can filter the list for specific character strings. Enter the characters in the field above the column headings.

Note: The filter finds any occurrence of the requested string. For example, if you want to find records from the date that contain a 13, the filter will also return records that have a 13 in the time field, or any other field.

3. Select whether to open or save the file.
4. To save the file, browse to the location for the file to be saved. Select the location and click **Save**.

Note: During the file transfer, if you click **Cancel**, the transfer may or may not be stopped, depending on the size of the file and rate of transfer. Click **Refresh** to see if the file is still available for download.

Index

A

Advanced File Transfer (AFT) 8

C

Connect
Enterprise for UNIX 8