

Sterling Selling and Fulfillment Foundation



# System Requirements Guide

*Release 9.1.0.26*



Sterling Selling and Fulfillment Foundation



# System Requirements Guide

*Release 9.1.0.26*

**Note**

Before using this information and the product it supports, read the information in "Notices" on page 35.

**Copyright**

This edition applies to the 9.1 Version of IBM Sterling Selling and Fulfillment Foundation and to all subsequent releases and modifications until otherwise indicated in new editions.

© **Copyright IBM Corporation 1999, 2012.**

US Government Users Restricted Rights – Use, duplication or disclosure restricted by GSA ADP Schedule Contract with IBM Corp.

---

## Contents

<b>Chapter 1. System Requirements Overview . . . . .</b>	<b>1</b>	<b>Chapter 10. System Requirements-Third-Party Software . . . . .</b>	<b>21</b>
<b>Chapter 2. System Requirements-Technical Stack Matrix . . . . .</b>	<b>3</b>	<b>Chapter 11. System Requirements-Mobile Application . . . . .</b>	<b>23</b>
<b>Chapter 3. System Requirements-IPv6 Certification . . . . .</b>	<b>5</b>	<b>Chapter 12. System Requirements-Rich Client Platform Application . . . . .</b>	<b>25</b>
<b>Chapter 4. System Requirements-Database Tier . . . . .</b>	<b>7</b>	RCP System Requirements - Installing Mozplugger	28
<b>Chapter 5. System Requirements-Application Server . . . . .</b>	<b>9</b>	<b>Chapter 13. System Requirements-Installation Memory . . . . .</b>	<b>29</b>
<b>Chapter 6. System Requirements-Utilities . . . . .</b>	<b>13</b>	<b>Chapter 14. System Requirements-Disk Space for Installation . . . . .</b>	<b>31</b>
<b>Chapter 7. System Requirements-Internet Browsers and Plugins . . . . .</b>	<b>15</b>	<b>Chapter 15. Where to Find Information About System Requirements . . . . .</b>	<b>33</b>
<b>Chapter 8. System Requirements-Web Server . . . . .</b>	<b>17</b>	<b>Notices . . . . .</b>	<b>35</b>
<b>Chapter 9. System Requirements-Online Documentation Library . . . . .</b>	<b>19</b>	<b>Index . . . . .</b>	<b>39</b>



---

## Chapter 1. System Requirements Overview

IBM® Sterling Selling and Fulfillment Foundation is an n-tier application, using a combination of application server, Web server, and database server software. This guide lists all the supported operating systems and the software that is required for the deployment of Sterling Selling and Fulfillment Foundation.

As specified in the Installation Checklist in the *Sterling Selling and Fulfillment Foundation: Installation Guide*, before installing Sterling Selling and Fulfillment Foundation, ensure that you have already installed the applicable software listed in this guide.

### Minimum Requirements

This guide describes the minimum supported options for optimal performance of Sterling Selling and Fulfillment Foundation. The results you obtain are derived from your specific hardware, data volumes, and user activities.

### Obtaining Maximum Performance

For information about how to obtain the maximum performance from Sterling Selling and Fulfillment Foundation on the supported hardware and software, you must thoroughly read, evaluate, and apply the relevant recommendations described in the *Sterling Selling and Fulfillment Foundation: Performance Management Guide*. For example, Sterling Selling and Fulfillment Foundation predefines a set of indexes, but also expects your Database Administrator to monitor the system and add or remove indexes as necessary.

**Note:** To avoid data integrity issues, do not remove any unique indexes that are provided by Sterling Selling and Fulfillment Foundation .





---

## Chapter 2. System Requirements-Technical Stack Matrix

Sterling Selling and Fulfillment Foundation's technical stack consists of the various tiered hardware and software required by Sterling Selling and Fulfillment Foundation. The technical stack consists of a specific application server, JDK, and database server. You can select various supported configurations from the matrix to create a supported technical stack by following these rules and instructions:

- Select one database server.
- Select one application server.
- Find a match for the operating system based on your selections of the database and application server.

For example, you can use an Oracle® database server with IBM WebSphere® on one of the following operating system and processor combinations:

- Red Hat Enterprise Linux on an Intel 64-bit Xeon or AMD processor
- SUSE Linux on a 64-bit Xeon or AMD processor
- Although heterogeneous stacks are supported, when possible, one should consider a homogeneous stack to eliminate having to manage multiple vendors.
- Microsoft SQL Server is supported as a low volume platform with less than 20,000 order lines per hour that can be processed at peak hours.
- Oracle Real Application Clusters (RAC) is supported on 4-node configurations.



## Chapter 3. System Requirements-IPv6 Certification

IPv6 certification was performed using the IBM Sterling Warehouse Management System components of Sterling Selling and Fulfillment Foundation. Figure 1 illustrates the IPv6 deployment for Sterling Selling and Fulfillment Foundation.

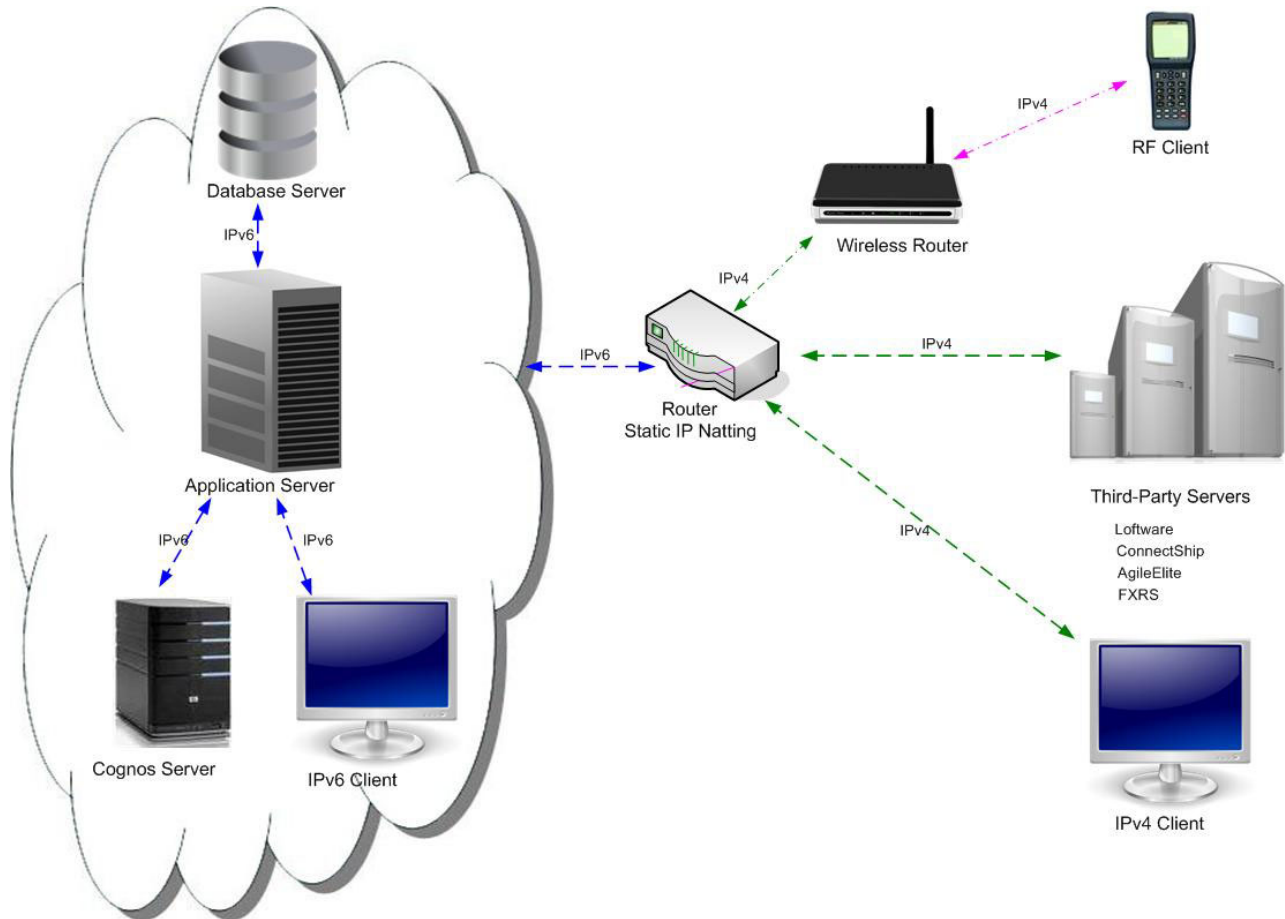


Figure 1. IPv6 Deployment for Sterling Selling and Fulfillment Foundation

Table 1 and Table 2 on page 6 list the certified stacks of IPv6 deployment.

Table 1. IPv6 Deployment, Certified Stack 1

IPv6 Components	IPv4 Components
<ul style="list-style-type: none"> <li>Application Server - Oracle WebLogic on Windows</li> <li>Database - DB2® on IBM AIX®</li> <li>Client PC - Windows - IE</li> </ul>	<ul style="list-style-type: none"> <li>Third-Party Software - Software, ConnectShip, AgileElite, FXRS</li> <li>Printers - Used by the IBM Sterling Warehouse Management System</li> <li>Client PC - Windows - IE</li> <li>Symbol MC9090</li> </ul>

Table 2. IPv6 Deployment, Certified Stack 2

IPv6 Components	IPv4 Components
<ul style="list-style-type: none"> <li>• Application Server - IBM WebSphere on Red Hat Enterprise Linux</li> <li>• Database - DB2 on IBM AIX</li> <li>• Cognos® on Windows</li> <li>• Client PC - Windows - IE</li> </ul>	<ul style="list-style-type: none"> <li>• Third-Party Software - Loftware, ConnectShip, AgileElite, FXRS</li> <li>• Printers - Used by the IBM Sterling Warehouse Management System</li> <li>• Client PC - Windows - IE</li> <li>• Symbol MC9090</li> </ul>
<p>The IBM Sterling Warehouse Management System reports were tested with the client on IPv6 only.</p>	

**Note:** For more information about IPv6 certification and the supported versions of component vendor products that you are using, refer to the respective vendor's documentation.

## Chapter 4. System Requirements-Database Tier

This section describes the minimum supported options for the database tier supported in Sterling Selling and Fulfillment Foundation. You can select a database server based on your choice of operating system, as shown in Table 3.

Table 3. Supported Database Tier

Database Version	Operating System
Oracle 11.1.0.7	HP-UX 11i v3 on Itanium (Visual Modeler is not supported on these configurations.)
Oracle 11.2.0.1 <b>Note:</b> Support for Oracle databases does not include support for the Oracle Exadata platform.	IBM AIX 6.1 TL5(Visual Modeler is not supported on these configurations.)
	Sun Solaris 10 on SPARC processor and AMD Opteron
	Red Hat Enterprise Linux 5.5 / AP 64-bit Xeon or AMD processor
	SUSE Linux 11 on 64-bit Xeon or AMD processor (Visual Modeler is not supported on these configurations.)
	Windows 2008 Enterprise / Standard Edition
DB2 9.7 fix pack 3a <b>Note:</b> Note: Do <u>not</u> install the fix pack until after installing client components and compilers. See <i>Installing Client Components, Compilers, and Fix Pack</i> in the <i>Sterling Selling and Fulfillment Foundation: Installation Guide</i> for instructions.	IBM AIX 6.1 only with WebSphere and WebLogic 10.3.2  Red Hat Enterprise Linux 5.5 / AP 64-bit Xeon or AMD processor only with WebSphere and WebLogic
Microsoft SQL Server 2005 SP2	Windows 2008 Enterprise / Standard Edition
Microsoft SQL Server 2008	<b>Supported JDBC Driver:</b>  Microsoft SQLServer JDBC driver 3.0, version 3.0.1301.101.  Use the driver jar called sqljdbc4.jar.  You can download and install the driver from the Microsoft website:  <a href="http://www.microsoft.com/downloads/en/details.aspx?FamilyID=a737000d-68d0-4531-b65d-da0f2a735707&amp;displaylang=en">http://www.microsoft.com/downloads/en/details.aspx?FamilyID=a737000d-68d0-4531-b65d-da0f2a735707&amp;displaylang=en</a>  The driver download page includes installation instructions for Windows and UNIX.

**Note:** Oracle RAC is supported on 4-node configurations.

**Note:** This product is bundled with IBM DB2 Workgroup Server Edition. IBM DB2 Workgroup Server edition is ideal for development and test environments. Due to some customers' requirements, they may need IBM DB2 Enterprise Server Edition. We advise you to familiarize yourself with each edition's licenses, inclusions and exclusions and make the decision that meets your needs.



## Chapter 5. System Requirements-Application Server

This section describes the minimum supported requirements for the agent server tier and application server tier. You can select an application server based on your choice of operating system and Java Messaging Service (JMS) as shown in Table 4.

**Note:** Install the JDK that is shipped with your application server, unless otherwise noted.

*Table 4. Supported Application Server Tier*

Application Server	Operating System	JMS	JDK
Oracle WebLogic 11gR1 (10.3.2)	HP-UX 11i v3 on Itanium (Visual Modeler is not supported on these configurations.)	Default JMS server that comes with the application server or TIBCO EMS 6.1.0	HP JDK 6.0.08 (64-bit)
	IBM AIX 6.1 TL5(Visual Modeler is not supported on these configurations.)	Default JMS server that comes with the application server or TIBCO EMS 6.1.0	IBM JDK 6.0 (64-bit)
	Sun Solaris 10 on SPARC & AMD Opteron. Solaris with Fujitsu SPARC processor	Default JMS server that comes with the application server or TIBCO EMS 6.1.0	Sun JDK 6.0 Update 19 (1.6.0_19) (64-bit)
	Red Hat Enterprise Linux 5.5/AP 64-bit Xeon or AMD processor	Default JMS server that comes with the application server or TIBCO EMS 6.1.0	Sun JDK 6.0 Update 19 or JRockit 6.0 (R28.0.1-21) - part of JRockit mission control 4.0.1 package (64-bit)
	SuSe Linux Enterprise 11 on 64-bit Xeon or AMD processor	Default JMS server that comes with the application server or TIBCO EMS 6.1.0	Sun JDK 6.0 Update 19 (1.6.0_19) (64-bit) or JRockit 6.0 (R28.0.1-21) - part of JRockit mission control 4.0.1 package (64-bit)
	Windows 2008 Enterprise / Standard editions	Default JMS server that comes with the application server	Sun JDK 6.0 Update 19 or JRockit 6.0 (R28.0.1-21) - part of JRockit mission control 4.0.1 package (64-bit)

Table 4. Supported Application Server Tier (continued)

Application Server	Operating System	JMS	JDK
IBM WebSphere 7.0.0.13	IBM AIX 6.1 TL5	IBM WebSphere MQ 7.0 or default messaging provider that comes with the application server or TIBCO EMS 6.1.0	IBM JDK 6.0 SR8 (WebSphere 7.0.0.13)
	Sun Solaris 10 on SPARC processor and AMD Opteron (64 bit)	IBM WebSphere MQ 7.0 or default messaging provider that comes with the application server or TIBCO EMS 6.1.0	IBM JDK 6.0 SR8 (WebSphere 7.0.0.13)
	Red Hat Enterprise Linux 5.5 /AP 64-bit on Xeon or AMD processor	IBM WebSphere MQ 7.0 or default messaging provider that comes with the application server or TIBCO EMS 6.1.0	IBM JDK 6.0 SR8 (WebSphere 7.0.0.13)
	SUSE Linux Enterprise 11 on 64-bit Xeon or AMD-Opteron processor	IBM WebSphere MQ 7.0 or default messaging provider that comes with the application server	IBM JDK 6.0 SR8 (WebSphere 7.0.0.13)
JBoss EAP 5.1 (Visual Modeler is not supported on these configurations.)	Red Hat Enterprise Linux 5.5 /AP 64-bit on Xeon or AMD processor	JBoss EAP 5.1, IBM WebSphere MQ 7.0, TIBCO EMS 6.1.0	Sun JDK 6.0 Update 19 (1.6.0_19) (64-bit)
	Sun Solaris 10 on SPARC processor and AMD Opteron SP1	JBoss EAP 5.1, TIBCO EMS 6.1.0	Sun JDK 6.0 Update 19 (1.6.0_19) (64-bit)
Tomcat 6.0 (only for Visual Modeler)	Windows 2008 Enterprise / Standard editions	Not Applicable	Sun JDK 6.0 Update 19 (1.6.0_19) (64-bit)
	Red Hat Enterprise Linux 5.5	Not Applicable	Sun JDK 6.0 Update 19 (1.6.0_19) (64-bit)
	Solaris 10	Not Applicable	Sun JDK 6.0 Update 19 (1.6.0_19) (64-bit)

**Note:** If you are using SSL with JRockit and Oracle WebLogic 10.3.2, see the following article for information about a conflict with some versions of JRockit with WebLogic 10.3.2 and SSL. This article also explains how to obtain a fix from Oracle:

<http://forums.oracle.com/forums/thread.jspa?threadID=947219>



**Note:** A stability issue has been reported when running workloads with a WebLogic application server and the JRockit JVM. Workloads fail with an "illegal memory access" error. To avoid this issue, pass the command line option "-Xnoot" to the JVM.

To achieve load balancing and failover, you can install the web server or proxy server based on the application server you choose.



---

## Chapter 6. System Requirements-Utilities

**Note:** For the utilities listed in this section, use the same version of JDK that you use for your application server.

**Note:** For WebSphere, use the WebSphere JDK from the WebSphere Application Server with WebSphere Application Server jar files.

Following are the utility requirements for installation:

- Runtime Utilities
  - Integration Server
  - Agent Server
  - Agent Trigger
- Installation Utilities
  - Installer
  - loadFactoryDefaults
  - All the steps after the Installer through EAR precompilation (for example, merge, EAR compilation)
- Upgrade Utilities
  - Migration Validator
  - Migrator
- Development Utilities
  - Configuration Deployment Tool
  - Transaction Data Truncation Tool



---

## Chapter 7. System Requirements-Internet Browsers and Plugins

The minimum Internet browser and Java plugin requirements are shown in Table 5.

Table 5. Supported Browsers and the Sterling Selling and Fulfillment Foundation Client

Internet Browser	Operating System	JRE
(For Legacy HTML Framework) Microsoft Internet Explorer 7, Microsoft Internet Explorer 8	Windows XP, Windows Vista	Java Plugin 1.6.0_21
(For IBM Sterling Business Center UI screens, IBM Sterling Field Sales, and IBM Sterling Web) <ul style="list-style-type: none"><li>• Microsoft Internet Explorer 8</li><li>• Microsoft Internet Explorer 7</li><li>• Mozilla Firefox 3.6</li><li>• Mozilla Firefox 3.5</li><li>• Google Chrome 5</li><li>• Apple Safari 5.0.3</li></ul>	All operating systems	

If you are running IBM Sterling Business Center, IBM Sterling Field Sales, or IBM Sterling Web on Microsoft Internet Explorer 8, IBM recommends that you turn off the Compatibility View option.

If you are running the Application Console and Applications Manager from the same browser window in Microsoft Internet Explorer 7, the Console becomes disabled when you open a pop-up window in the Applications Manager. This is because of the manner in which tabs and popup windows are handled in Microsoft Internet Explorer 7. To enable the Console, close the pop-up window in the Applications Manager.

**Note:** By default, the Java plug-in memory should be set to 128 M. When using the Fulfillment Network Model, set the Java plugin memory to 256 M. In either case, ensure that you have enabled the Java cache, as setting Java plug-in memory also requires enabling the Java cache.

**Note:** To avoid heap space errors when using the Applications Manager, it is recommended that you set the Xmx value in the Java Plugin Control Panel. Locate the `\Documents and Settings\<USER_NAME>\ApplicationData\Sun\Java\Deployment\deployment.properties` file and add your parameter to the `deployment.javapi.jre.<JRE_VERSION>.args` line.

**Note:** For more information about the Fulfillment Network Model, see the *Sterling Selling and Fulfillment Foundation: Distributed Order Management Configuration Guide*.

**Note:** For better visibility of the menu options in the Application Console, ensure that the dpi setting is 96.

When you perform the following steps in a Microsoft Internet Explorer 7.0 browser, Internet Explorer automatically redirects you to the tab pertaining to the most recent login:

- Log in as a user of a business application in a new Microsoft Internet Explorer window.
- Open a new tab in the same Microsoft Internet Explorer window, and try to log in to the same business application, but as a different user.

If you want to log in as two different users of the same business application, use a new Microsoft Internet Explorer window for the second log in. This rule applies even if you attempt to log in as two different users of two different business applications in the scenario described here.

---

## Chapter 8. System Requirements-Web Server

The following Web servers are supported for IBM Sterling Web:

- Apache HTTP Server 2.2
- Microsoft Internet Information Services (IIS) 7.5





---

## Chapter 9. System Requirements-Online Documentation Library

The following Web browsers are supported for access to the Online Documentation Library:

- Internet Explorer 8
- Internet Explorer 7
- Mozilla Firefox 3.6
- Mozilla Firefox 3.5
- Google Chrome 5
- Apple Safari 5.0.3



---

## Chapter 10. System Requirements-Third-Party Software

The requirements for third party products and systems are provided in the following table. The software mentioned in the table is supported for all the operating systems unless otherwise specified.

*Table 6. Supported Third-Party Software*

Name	Version
Build tools	Apache ANT 1.7.1, ANT-CONTRIB (bundled with Sterling Selling and Fulfillment Foundation)
IBM Cognos Reports	IBM Cognos 8 BI 8.4.1 IBM Cognos Analytic Applications 8.4.2
ConnectShip	ConnectShip Version 6.2
Ext JS	Ext JS 3.0 for IBM Sterling Business Center Ext JS 3.1 for Web Channel
FedEx	FXRS 0776
FedEx Printer	Eltron LP2844
FusionCharts	Fusion Charts 3.0
JasperReports	Jasperreports-3.6.1.jar
Loftware Print Server	Loftware Version 9.8
Lucene	Lucene 2.4
Pierbridge	AgileElite 6.5.102
RFID	Gen 96 Bit Alien Squiggle
Voxware	VoiceLogisticsPro 2.1.3.5
Weighing Scale	Mettler-Toledo PS30, PS60, or equivalent
Apache Logging Service	log4j 1.2.15 for Sensitive Data Capture Server
OWASP Enterprise Security API	ESAPI 1.4 for Sensitive Data Capture Server

**Note:** Cognos is supported on the operating system platforms which Cognos declares as supported in their online documentation:

- Cognos 8 BI 8.4.1: <https://www-304.ibm.com/support/docview.wss?uid=swg27017522>
- Cognos Analytic Applications 8.4.2: <https://www-304.ibm.com/support/docview.wss?uid=swg27018115>

**Note:** Loftware Print Server is a third party software product that can be purchased directly from the vendor, Loftware, Inc.

**Note:** Pierbridge AgileElite is a third party software product that can be purchased directly from the vendor, Pierbridge, Inc.



## Chapter 11. System Requirements-Mobile Application

The minimum system requirements supported for installing the Mobile Application are shown in Table 7.

*Table 7. Devices and Versions Supported for Running the Mobile Application*

Terminals	Supported
Mobile Terminals	Pocket PC 2003 OS with 1.0 SP3 .NET CFT
	Windows CE 4.1 OS with 1.0 SP3 .NET CFT
	Windows CE 5.0 OS with 2.0 SP1 .NET CFT
	VT220 emulation software
ncurses (VT220 emulation software)	Version 5.3
ncurses build utilities	gcc-3.3.2, bison-1.875, make-3.80, and flex-2.5.4a These utilities are available in binary format from <a href="ftp://ftp.gnu.org/gnu/">ftp://ftp.gnu.org/gnu/</a> .
<b>Note:</b> Sterling Selling and Fulfillment Foundation is specifically tested with the Symbol PPT8846, Symbol PDT8146, Symbol PPT 8800, and Symbol VRC7900 series; the Denso BHT-400B, Denso BHT-260Q, and Denso BHT-420BW series; and the LXE_VXC001 and LXE_MX7001 series.	

Device requirements such as memory, screen resolution, keys, and network connectivity are described in Table 8.

*Table 8. Device Requirements*

Options	Description
Keys	Space, Backspace, Tab, Enter, arrow keys, 0-9, A-Z, a-z, function keys (F1-F12), and special symbols such as!@#\$\$%^&*()-_+=[]\<>?/.,.  The special symbols are required only if the data (for fields such as Item ID, Location ID, and Shipment Number) contains special characters.
Barcode Scanner	This device should be equipped with an integrated barcode scanner and should have the ability to send a TAB character after the scanned data.
Screen Resolution	Width:240, Height:320. Screens are designed for this resolution. Screen performance on devices with other resolutions may be suboptimal.  For VT220 screens, Sterling Selling and Fulfillment Foundation assumes 8 rows by 20 columns.
Network Connectivity	802.11x (802.11b or higher).
Memory	Minimum of 32 MB RAM.
<b>Note:</b> Microsoft ActiveSync 3.7 or higher is required to synchronize the PC with the mobile terminal to run the Mobile Application. Microsoft ActiveSync 3.7 can be installed on any PC. For more information about Microsoft ActiveSync, and related system requirements, go to <a href="http://www.microsoft.com">http://www.microsoft.com</a> .	



---

## Chapter 12. System Requirements-Rich Client Platform Application

This section lists all the supported operating systems and the software that is required for the deployment of the Rich Client Platform application. Before installing a Rich Client Platform application, verify that you have already installed the applicable software listed in this chapter.

### Operating System Requirements

The minimum operating system requirements for installing Rich Client Platform application are shown in Table 9.

*Table 9. Supported Operating Systems*

Name	Configuration
Windows	Windows XP, Windows 7
Linux	Red Hat Enterprise Linux WS 5.5 SUSE Linux Enterprise Desktop 11

**Note:** For optimal resolution quality of the menu options and other user interface components of the Rich Client Platform applications, set your system resolution to 96 dpi.

### Minimum Hardware Requirements

The minimum hardware requirements for installing the Rich Client Platform applications are listed in Table 10.

*Table 10. Minimum and Recommended Hardware Requirements*

Component	Minimum	Recommended
Processor	350 MHz	1 GHz
Memory	512 MB	1 GB

### Sterling Selling and Fulfillment Foundation Plugin Requirements

The Sterling Selling and Fulfillment Foundation plugins supported for installing Rich Client Platform application are shown in Table 11.

*Table 11. Supported Sterling Selling and Fulfillment Foundation Plugins*

Name	Version
Rich Client Platform plugin	RCP Plugin 1.0.0
Rich Client Platform Tools plugin	RCP Tools Plugin 1.1.0

To verify that you have a supported version of the plugins listed in Table 11, follow the steps listed:

1. Open Eclipse.
2. Navigate to Help > About Eclipse SDK.

3. Click Plugin Details.
4. Verify that the plugins listed in Table 12 match those that are listed in Eclipse.

Table 12. Plugins Installed in Eclipse

Name	Plugin Name
RCP plugin	Rich Client Platform Foundation Plugin 1.0.0
	Rich Client Platform Libs Plugin
	Rich Client Platform Plugin 1.0.0
RCP Tools plugin	RCP Extensibility Tools 1.1.0
	RCP Tools Core Plug-in 1.1.0
	RCP Tools UI Editor Plug-in 1.1.0

Table 13. RCP Client and Tool Requirements

Name	Requirement	JRE
Client	SUSE Linux Enterprise Desktop 11	Java Plugin 1.6.0_21
	Windows XP	
	Red Hat Linux WS 5.5	
Tool - Eclipse 3.3	Windows XP	Java Plugin 1.6.0_21

## Third-Party Software Requirements

Third-party software such as Eclipse SDK and its related plugins, JDK, and so on, are provided in Table 14. The software mentioned in the table is supported on all the operating systems except where otherwise specified.

Table 14. Supported Third-Party Software

Name	Version								
Eclipse SDK	Eclipse SDK 3.3								
	The following table lists the Eclipse-related plugins and the versions that Sterling Selling and Fulfillment Foundation supports:								
	<table border="1"> <thead> <tr> <th>Name</th> <th>Version</th> </tr> </thead> <tbody> <tr> <td>GEF plugin</td> <td>GEF Plugin 3.2, SDK</td> </tr> <tr> <td>EMF plugin</td> <td>EMF Plugin 2.2.0, SDK (includes EMF, SDO, XSD)</td> </tr> <tr> <td>VE plugin</td> <td>Visual Editor Plugin 1.2, SDK</td> </tr> </tbody> </table>	Name	Version	GEF plugin	GEF Plugin 3.2, SDK	EMF plugin	EMF Plugin 2.2.0, SDK (includes EMF, SDO, XSD)	VE plugin	Visual Editor Plugin 1.2, SDK
	Name	Version							
	GEF plugin	GEF Plugin 3.2, SDK							
EMF plugin	EMF Plugin 2.2.0, SDK (includes EMF, SDO, XSD)								
VE plugin	Visual Editor Plugin 1.2, SDK								
JDK	JDK 6.0.								
JRE	JRE 6.0 Update 21 (Java Plugin 1.6.0_21)								
	The JRE is used to run the rich clients.								

To install the Eclipse SDK and its related plugins, go to the following link and download the appropriate version of Eclipse SDK and its related plugins for the appropriate operating system:

<http://www.eclipse.org/downloads/>



To install the JDK/JRE, go to the following link and download the appropriate version of the JDK:

<http://java.sun.com/downloads/>.

## Supported Browser Version on Red Hat Linux Workstation 5.5

The default Firefox browser that is installed with the Red Hat Linux Workstation 5.5 is the certified version.

**Note:** You need to set the environment variable, MOZILLA\_FIVE\_HOME to the folder containing your Firefox installation. For example, set the env MOZILLA\_FIVE\_HOME as /usr/lib/firefox-3.6

For more information about the supported browser version, see the following links:

- <http://www.eclipse.org/swt/faq.php#browserlinux>
- <http://www.eclipse.org/swt/faq.php#browserlinuxrcp>

## Supported Browser Version on Suse Linux Desktop 11

Rich Client Platform supports Mozilla browser on the Suse Linux Desktop 11. The default Firefox browser that is installed with the Suse Linux Desktop 11 is not supported.

**Note:** You need to set the environment variable, MOZILLA\_FIVE\_HOME to the folder containing your Mozilla installation. For example, set the env MOZILLA\_FIVE\_HOME as /usr/lib/mozilla-1.7.12.

For more information about the supported browser version, see the following links:

- <http://www.eclipse.org/swt/faq.php#browserlinux>
- <http://www.eclipse.org/swt/faq.php#browserlinuxrcp>

## Installing Browser Plugins on Linux

In the Rich Client Platform-based applications, FusionCharts, and JasperReports can be viewed in the client application. This requires the following plugins to be installed on the Firefox browser:

- Flash Player Plugin to view FusionCharts
- Mozplugger to view JasperReports

## Installing the Flash Player Plugin

To install the flash player plugin, open the following link in your Linux Firefox browser and follow the instructions provided:

[http://www.adobe.com/shockwave/download/download.cgi?P1\\_Prod\\_Version=ShockwaveFlash](http://www.adobe.com/shockwave/download/download.cgi?P1_Prod_Version=ShockwaveFlash)

**Note:** During installation, the browser installation directory should point to the Firefox install directory. For example, /usr/lib/firefox-3.6

---

## RCP System Requirements - Installing Mozplugger

### About this task

To install the Mozplugger:

### Procedure

1. Navigate to: <http://mozplugger.mozdev.org/>
2. Download Version 1.7.3 SOURCE of the MozPlugger to a local directory. The mozplugger-1.7.3.tar.gz file is downloaded.
3. Untar the mozplugger-1.7.3.tar.gz file. The mozplugger-1.7.3 directory is created.
4. Change the directory to mozplugger-1.7.3 and run the following commands:
  - make linux
  - make install

**Note:** During installation, the browser installation directory should point to the Firefox install directory. For example, `/usr/lib/firefox-3.6`

---

## Chapter 13. System Requirements-Installation Memory

The minimum memory requirements for Sterling Selling and Fulfillment Foundation are based on the products you are installing. Table 15 shows the installation command parameters to use for the supported operating systems.

*Table 15. Minimum Memory Requirements*

Operating System	Installation Command Parameters
Solaris 10 on SPARC processor (64-bit AMD)	-J-Xms256m -J-Xmx1408m -XX:MaxPermSize=768m
Windows 2008, Windows XP	-J-Xms1024m -J-Xmx2048m -XX:MaxPermSize=512m
IBM AIX 6.1 TL5	-J-Xms1024m -J-Xmx1536m
HP-UX 11i v3 on Itanium	-J-Xms256m -J-Xmx1408m -XX:MaxPermSize=512m
Red Hat Enterprise Linux 5.5/AP 64-bit Xeon or AMD processor	-J-Xms1024m -J-Xmx1664m -XX:MaxPermSize=512m
SUSE Linux Enterprise 11 on 64-bit Xeon or AMD processor	-J-Xms1024m -J-Xmx1664m -XX:MaxPermSize=512m

**Note:** For Red Hat Enterprise Linux and SUSE Linux Enterprise operating system, the `-XX:MaxPermSize=512m` command parameter does not need to be set for the JRockit JDK. Also for Red Hat Enterprise Linux, the `-XX:MaxPermSize=512m` command parameter does not need to be set for IBM JDK 6.0.

For information about these memory parameters as they relate to the `ADDITIONAL_ANT_JAVA_TASK_ARGS` and `ADDITIONAL_ANT_COMPILER_TASK_ARGS` properties, see the *Sterling Selling and Fulfillment Foundation: Properties Guide*.



---

## Chapter 14. System Requirements-Disk Space for Installation

During the Sterling Selling and Fulfillment Foundation installation, the installer checks for a minimum of 7 GB of free disk space on the specified drive. If the system does not meet this requirement, the installation fails.



---

## Chapter 15. Where to Find Information About System Requirements

All information about system requirements is located in the *Selling and Fulfillment Foundation: Requirements Guide*.





---

## Notices

This information was developed for products and services offered in the U.S.A.

IBM may not offer the products, services, or features discussed in this document in other countries. Consult your local IBM representative for information on the products and services currently available in your area. Any reference to an IBM product, program, or service is not intended to state or imply that only that IBM product, program, or service may be used. Any functionally equivalent product, program, or service that does not infringe any IBM intellectual property right may be used instead. However, it is the user's responsibility to evaluate and verify the operation of any non-IBM product, program, or service.

IBM may have patents or pending patent applications covering subject matter described in this document. The furnishing of this document does not grant you any license to these patents. You can send license inquiries, in writing, to:

*IBM Director of Licensing*

*IBM Corporation*

*North Castle Drive*

*Armonk, NY 10504-1785*

*U.S.A.*

For license inquiries regarding double-byte character set (DBCS) information, contact the IBM Intellectual Property Department in your country or send inquiries, in writing, to:

*Intellectual Property Licensing*

*Legal and Intellectual Property Law*

*IBM Japan Ltd.*

*1623-14, Shimotsuruma, Yamato-shi*

*Kanagawa 242-8502 Japan*

**The following paragraph does not apply to the United Kingdom or any other country where such provisions are inconsistent with local law:**

INTERNATIONAL BUSINESS MACHINES CORPORATION PROVIDES THIS PUBLICATION "AS IS" WITHOUT WARRANTY OF ANY KIND, EITHER EXPRESS OR IMPLIED, INCLUDING, BUT NOT LIMITED TO, THE IMPLIED WARRANTIES OF NON-INFRINGEMENT, MERCHANTABILITY OR FITNESS FOR A PARTICULAR PURPOSE. Some states do not allow disclaimer of express or implied warranties in certain transactions, therefore, this statement may not apply to you.

This information could include technical inaccuracies or typographical errors. Changes are periodically made to the information herein; these changes will be

incorporated in new editions of the publication. IBM may make improvements and/or changes in the product(s) and/or the program(s) described in this publication at any time without notice.

Any references in this information to non-IBM Web sites are provided for convenience only and do not in any manner serve as an endorsement of those Web sites. The materials at those Web sites are not part of the materials for this IBM product and use of those Web sites is at your own risk.

IBM may use or distribute any of the information you supply in any way it believes appropriate without incurring any obligation to you.

Licensees of this program who wish to have information about it for the purpose of enabling: (i) the exchange of information between independently created programs and other programs (including this one) and (ii) the mutual use of the information which has been exchanged, should contact:

*IBM Corporation*

*J46A/G4*

*555 Bailey Avenue*

*San Jose, CA 95141-1003*

*U.S.A.*

Such information may be available, subject to appropriate terms and conditions, including in some cases, payment of a fee.

The licensed program described in this document and all licensed material available for it are provided by IBM under terms of the IBM Customer Agreement, IBM International Program License Agreement or any equivalent agreement between us.

Any performance data contained herein was determined in a controlled environment. Therefore, the results obtained in other operating environments may vary significantly. Some measurements may have been made on development-level systems and there is no guarantee that these measurements will be the same on generally available systems. Furthermore, some measurements may have been estimated through extrapolation. Actual results may vary. Users of this document should verify the applicable data for their specific environment.

Information concerning non-IBM products was obtained from the suppliers of those products, their published announcements or other publicly available sources. IBM has not tested those products and cannot confirm the accuracy of performance, compatibility or any other claims related to non-IBM products. Questions on the capabilities of non-IBM products should be addressed to the suppliers of those products.

All statements regarding IBM's future direction or intent are subject to change or withdrawal without notice, and represent goals and objectives only.

All IBM prices shown are IBM's suggested retail prices, are current and are subject to change without notice. Dealer prices may vary.

This information is for planning purposes only. The information herein is subject to change before the products described become available.

This information contains examples of data and reports used in daily business operations. To illustrate them as completely as possible, the examples include the names of individuals, companies, brands, and products. All of these names are fictitious and any similarity to the names and addresses used by an actual business enterprise is entirely coincidental.

#### COPYRIGHT LICENSE:

This information contains sample application programs in source language, which illustrate programming techniques on various operating platforms. You may copy, modify, and distribute these sample programs in any form without payment to IBM, for the purposes of developing, using, marketing or distributing application programs conforming to the application programming interface for the operating platform for which the sample programs are written. These examples have not been thoroughly tested under all conditions. IBM, therefore, cannot guarantee or imply reliability, serviceability, or function of these programs. The sample programs are provided "AS IS", without warranty of any kind. IBM shall not be liable for any damages arising out of your use of the sample programs.

Each copy or any portion of these sample programs or any derivative work, must include a copyright notice as follows:

© IBM 2011. Portions of this code are derived from IBM Corp. Sample Programs. © Copyright IBM Corp. 2011.

If you are viewing this information softcopy, the photographs and color illustrations may not appear.

#### **Trademarks**

IBM, the IBM logo, and [ibm.com](http://www.ibm.com)<sup>®</sup> are trademarks or registered trademarks of International Business Machines Corp., registered in many jurisdictions worldwide. Other product and service names might be trademarks of IBM or other companies. A current list of IBM trademarks is available on the Web at "Copyright and trademark information" at <http://www.ibm.com/legal/copytrade.shtml>.

Adobe, the Adobe logo, PostScript, and the PostScript logo are either registered trademarks or trademarks of Adobe Systems Incorporated in the United States, and/or other countries.

IT Infrastructure Library is a registered trademark of the Central Computer and Telecommunications Agency which is now part of the Office of Government Commerce.

Intel, Intel logo, Intel Inside, Intel Inside logo, Intel Centrino, Intel Centrino logo, Celeron, Intel Xeon, Intel SpeedStep, Itanium, and Pentium are trademarks or registered trademarks of Intel Corporation or its subsidiaries in the United States and other countries.

Linux is a registered trademark of Linus Torvalds in the United States, other countries, or both.

Microsoft, Windows, Windows NT, and the Windows logo are trademarks of Microsoft Corporation in the United States, other countries, or both.

ITIL is a registered trademark, and a registered community trademark of the Office of Government Commerce, and is registered in the U.S. Patent and Trademark Office.

UNIX is a registered trademark of The Open Group in the United States and other countries.

Java and all Java-based trademarks and logos are trademarks or registered trademarks of Oracle and/or its affiliates.

Cell Broadband Engine is a trademark of Sony Computer Entertainment, Inc. in the United States, other countries, or both and is used under license therefrom.

Linear Tape-Open, LTO, the LTO Logo, Ultrium and the Ultrium Logo are trademarks of HP, IBM Corp. and Quantum in the U.S. and other countries.

Connect Control Center<sup>®</sup>, Connect:Direct<sup>®</sup>, Connect:Enterprise<sup>®</sup>, Gentran<sup>®</sup>, Gentran<sup>®</sup>:Basic<sup>®</sup>, Gentran:Control<sup>®</sup>, Gentran:Director<sup>®</sup>, Gentran:Plus<sup>®</sup>, Gentran:Realtime<sup>®</sup>, Gentran:Server<sup>®</sup>, Gentran:Viewpoint<sup>®</sup>, Sterling Commerce<sup>™</sup>, Sterling Information Broker<sup>®</sup>, and Sterling Integrator<sup>®</sup> are trademarks or registered trademarks of Sterling Commerce<sup>™</sup>, Inc., an IBM Company.

Other company, product, and service names may be trademarks or service marks of others.

---

# Index

## M

- maximum performance 1
- mobile terminals
  - device requirements
    - barcode scanner 23
    - keys 23
    - minimum memory 23
    - network connectivity 23
    - screen resolution 23
  - synchronization 23

## S

- system requirements
  - minimum 1







Printed in USA