



IBM Software Services for DB2 Information Management

IBM® Information Management software

## IBM Health Check Services for DB2 Enterprise Server Edition V9.1 for Linux, UNIX, and Windows



---

### Highlights

---

- ***Learn from the best DB2 experts in the industry in how to get the most from your data environment***
- ***Work with IBM's expert database consultants to mentor your staff***
- ***Design your system optimally using IBM database best practices and avoid costly changes once a system is in production***

The latest release of IBM® DB2® for Linux, UNIX and Windows provides the ultimate in performance, scalability, reliability, availability, and security all in a cost-effective platform that is open and flexible and supports key industry standards. Additionally, improved integration with key development platforms makes application developers even more productive than ever.

This offering will help your organization get the most from your DB2 9 environment and help to avoid costly issues and capacity planning issues. The health check is designed not to just examine and improve your database but instead is targeted at all parts of your data warehouse. This holistic review offers much value and has helped to drive great performance gains from this offering.

### What's Involved

When engaging IBM Software Services, you can be sure that you are working with the industry's leading experts. Consultants from IBM Software Services for DB2 Information Management assist you with the installation and configuration of the DB2 Data Server family of products. The consultants will work closely with the administrators of your database systems. A series of interviews will be conducted to identify business and IT issues that may be leading to reduced performance.

The Health Check will be tailored to meet the identified needs of the business. The Health Check is more than just a system review but is instead an ideal opportunity to mentor your staff in the latest DB2 best practices.

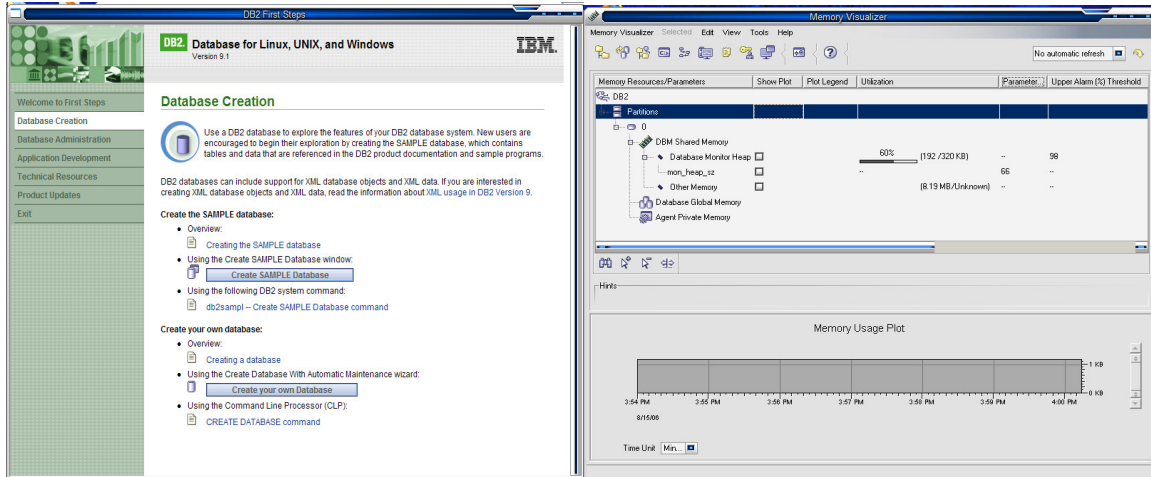
The IBM consulting team will also conduct:

#### Hardware configuration review

- Optimal disk layout (disk controllers and CPU and memory configurations)
- Use of DB2 compression
- Use of DB2 Storage Management

#### Operating system review

- Parameters affecting DB2 communication
- Parameters affecting DB2 performance
- Review of operating system error logs



The primary activities that will be undertaken in this services offering will also be:

### DB2 Enterprise Server Edition V9.1 - Instance review

- Software level and installation
- Instance level configuration
- Registry definitions
- Review of instance level error logs

### DB2 Databases

- Configuration
- Object layout and definition

### Operational considerations

- Review any recent critical outages and determine root cause
- Monitoring of functioning database environment during peak and off-peak times
- Review customer operational procedures for high availability and recovery

### Supported Products

IBM DB2 9 for Linux, UNIX and Windows  
IBM DB2 Connect  
IBM DB2 9 Data Warehouse Edition

### For more information

To learn more about IBM Software Services for DB2 Information Management and this service offering, please contact your local IBM sales representative or send an e-mail to [dmskills@us.ibm.com](mailto:dmskills@us.ibm.com). You can also reach via the following website:  
<http://www-306.ibm.com/software/data/services/contacts.html>

© Copyright IBM Corporation 2006

IBM Corporation  
Software Group  
1133 Westchester Avenue  
White Plains, NY 10604  
U.S.A.

IBM, the IBM logo, WebSphere, Alphablox and DB2 are trademarks or registered trademarks of International Business Machines Corporation in the United States and other countries. All rights reserved.

Other company, product, and service names may be trademarks or service marks of others.

References in this publication to IBM products or services do not imply that IBM intends to make them available in all countries in which IBM operates.

Visit our Web site at  
[ibm.com/software/data/services](http://ibm.com/software/data/services)