



Tendances Logicielles

L'architecture pour répondre aux besoins métier

Integrate Lotus Connections in your applications



Agenda

- Out-of-the-box capabilities
- Integration concepts
- Introduction to ATOM
- Business card integration
- Summary
- Q&A





Introducing

Lotus Connections



Tendances Logicielles

L'architecture pour répondre aux besoins

Lotus Connections is **social software** for business that empowers you to be more **innovative** and helps you **execute more quickly** by using **dynamic networks** of coworkers, partners and customers.



Profiles



Communities



Blogs



Dogear



Activities

Lotus Connections consists of 5 services ...



Profiles

Quickly find the people you need by searching across your organization using keywords that help identify expertise, current projects and responsibilities



Communities

Create, find and join communities of people who share a common interest, responsibility, or area of expertise



Blogs

Use a weblog to present your point of view and get feedback from others; read what others are saying



Dogear

Save, organize and share bookmarks to valued online resources, discover bookmarks that have been shared by others



Activities

Organize your work, plan next steps, and collaborate easily with others to execute on your everyday deliverables





Integration with Notes 8

The screenshot shows the IBM Lotus Notes interface. The main window is titled "Mail - Inbox - IBM Lotus Notes". The left sidebar shows the "Frank Adams" mailbox structure with folders like "Inbox (65)", "Drafts", "Sent", "Follow Up", "All Documents", "Junk", "Trash", "Chat History", "Views", "Folders", "Articles", "Competitive Analy", "Finance", "Human Resource", "Management Info", "Marketing", "Meeting (5)", "Sales", "Team Meetings", "Website", "Archive", "Tools", "Rules", "Stationery", and "Other Mail".

The central pane displays an email list with columns for "Sender", "Subject", "Date", and "Size". The selected email is "Re: New Hire for Sale" from Frank Adams to Heather, dated 12/27/2006 12:19 PM. The email content is visible below the list.

The right sidebar shows the "Activities" pane, which lists various activities such as "Requirements Document here", "Event Logistics", "TechTalkPresentation", "Frank Adams", "Presentation", "Marketing for Social Networking", and "Day At-A-Glance". A red callout box with a white background and black border is overlaid on the activities list, containing the text: "View public activities or your activities by priority, all entries, trash, completed, and tuned out".

Sender	Subject	Date	Size
Jasmine Haj	New Company Logo	12/19/2006 04:50 PM	6K
Ted Amado	Marketing Strategy discussion	12/19/2006 05:27 PM	8K
Ted Amado	Re: Marketing Strategy discussion	12/19/2006 05:30 PM	13K
Ted Amado	Re: Marketing Strategy discussion	12/21/2006 01:59 PM	19K
Heather Reeds	Updates required ...	12/21/2006 02:01 PM	7K
Frank Adams	Sales Review	12/27/2006 11:05 AM	3K
Ted Amado	Updated Sales Pitch Presentation	12/27/2006 11:38 AM	83K
Ted Amado	Re: Updated Sales Pitch Presentation	12/27/2006 11:40 AM	13K
Dennis Michaels	New Hire for Sales Position	12/27/2006 11:53 AM	29K
Heather Reeds	Project Plan Update	12/27/2006 12:04 PM	6K
Betty Zechman	Approval Request	12/27/2006 12:08 PM	29K
Heather Reeds	Re: New Hire for Sale	12/27/2006 12:09 PM	13K
Heather Reeds	Re: New Hire for Sale	12/27/2006 12:09 PM	19K
Betty Zechman	Re: Approval Request	12/27/2006 12:10 PM	13K
Jasmine Haj	Key Customer Account	12/27/2006 12:11 PM	6K
Ling Shin	Re: Updated Sales	12/27/2006 12:11 PM	20K
Ling Shin	Re: Approval Request	12/27/2006 12:15 PM	4K

Re: New Hire for Sale
Frank Adams to: Heather Reeds
Cc: Dennis Michaels
Default custom expiration date

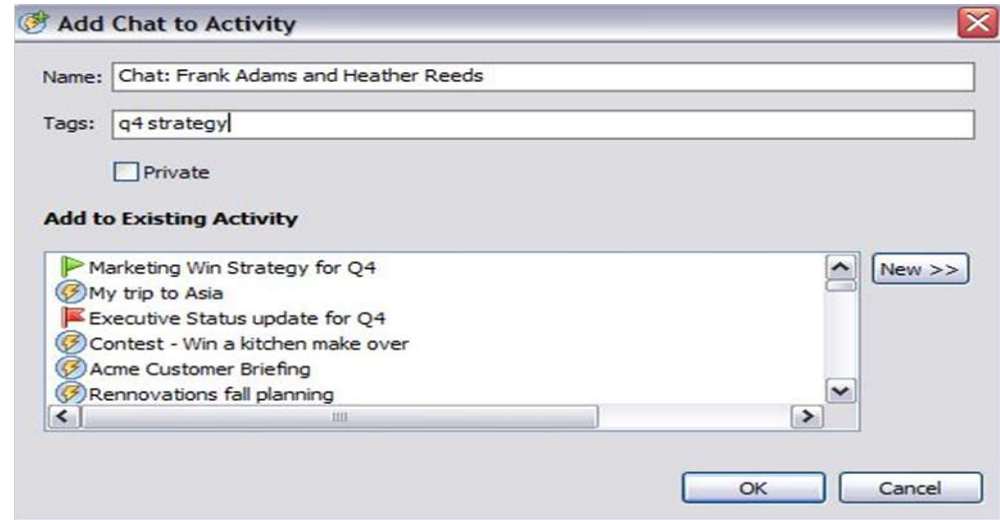
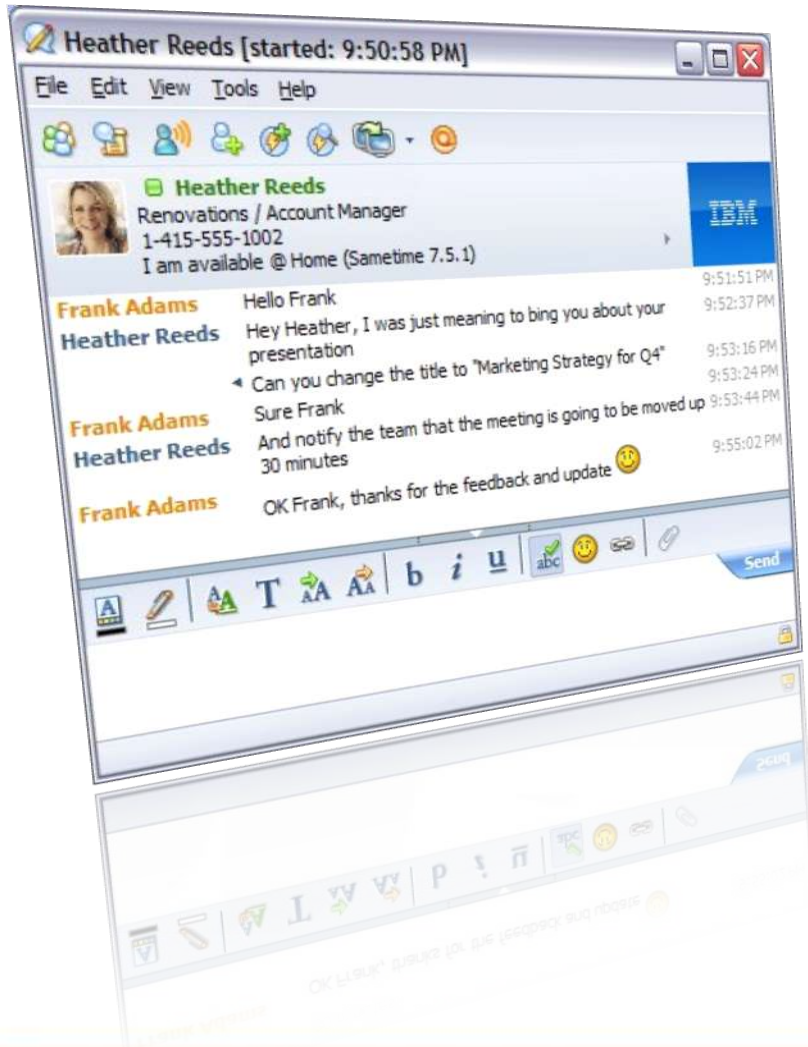
Hi Heather:

I was told by HR that they have had several phone interviews from potential hires, but this person was the most qualified and provided the best answers to the screening questions.

Dennis - Thanks for sending the resume along. I was able to glance at it and the person definitely looks like a potential hire. I can't wait to meet them and conduct the interview.

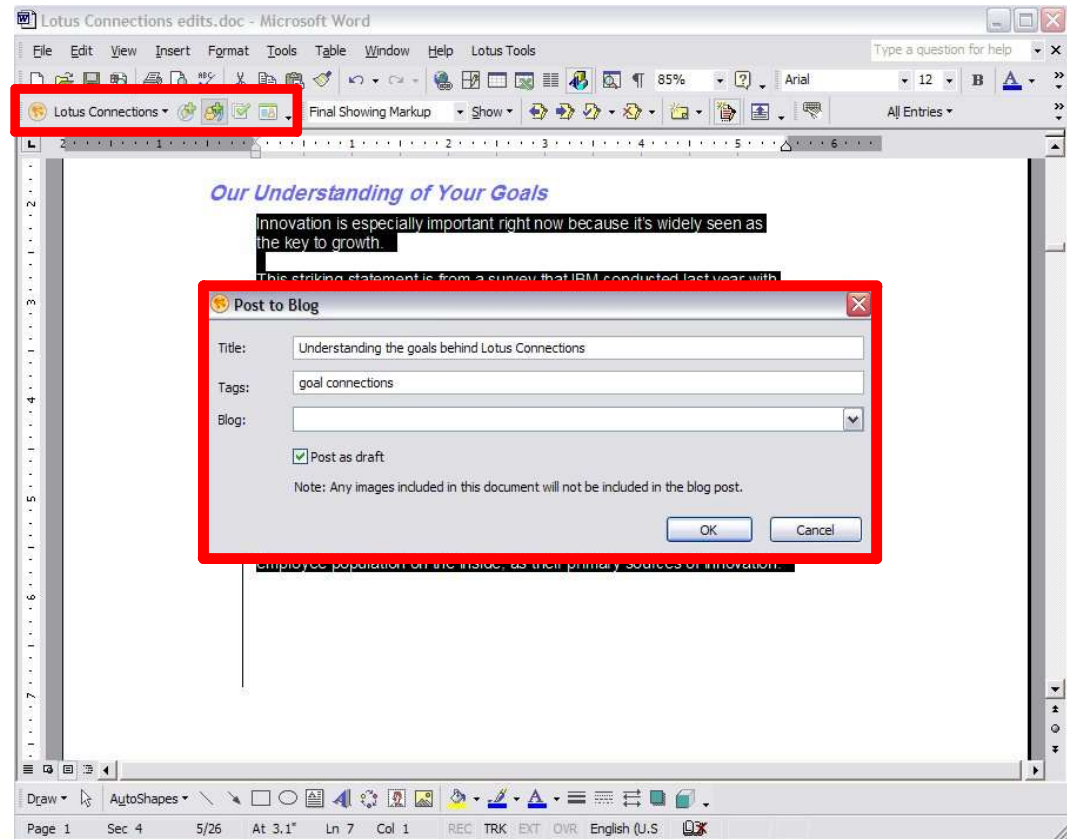
Regards,
Frank

Integration with Sametime



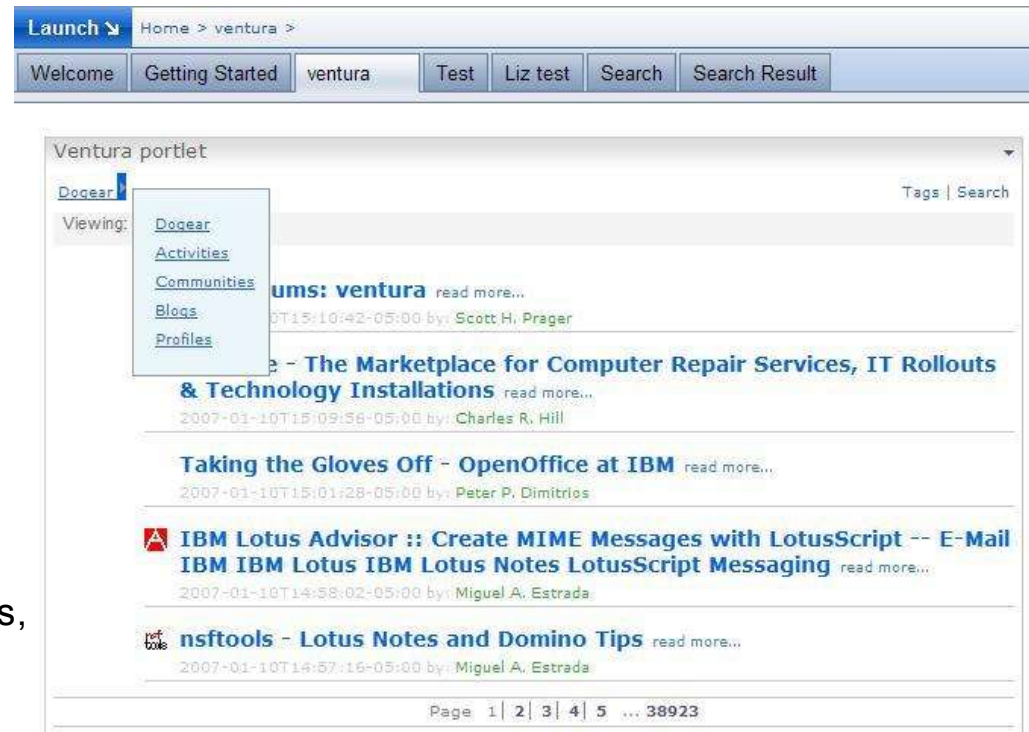
Integration with Microsoft Windows Explorer and Microsoft Office

- Uses Atom/AtomPub API to publish documents to Activities and Blogs and to search Profiles
- Microsoft® Windows® Explorer
 - Post a document to Activities
- Word
 - Publish a document to Activities
 - Post content to a Blog
 - Search Profiles
 - Create a to-do list
- PowerPoint® and Excel
 - Add to Activities
 - Search Profiles



Lotus Connections and WebSphere Portal

- One portlet
- Can change to five different views
 - Dogear
 - Activities
 - Communities
 - Blogs
 - Profiles
- Some views have additional configuration options
 - E.g., Dogear view can be filtered to show your bookmarks, all bookmarks, popular bookmarks
- Other custom possibilities
 - Extensions to insert Dogear icon next to bookmarkable Web content
 - Insert Activities icon next to link to send to Activity



Microsoft Outlook

The screenshot displays the Microsoft Outlook 2007 interface. The main window is titled "Inbox - Microsoft Outlook" and features a menu bar (File, Edit, View, Go, Tools, Actions, Help, IBM Lotus Tools) and a toolbar with icons for New, Reply, Reply to All, Forward, and Send/Receive. The left sidebar shows the "Mail" folder structure, including "Favorite Folders" (Inbox (6), Unread Mail, Sent Items) and "Mail Folders" (All Mail Items, Personal Folders, Deleted Items (2), Drafts, Junk E-mail (6), My Activities, Outbox, RSS Feeds, Asia Markets Community (2), Frank Adams's Activity To Do, Heather Reeds' Bookmarks (1), Team Asia Blog (5), Sent Items, Search Folders, Categorized Mail, Large Mail, Unread Mail). The bottom-left pane shows "Mail", "Calendar", "Contacts", and "Tasks".

The central pane displays the "Inbox" with a search bar and columns for "From", "Subject", "Received", and "Size". The inbox list includes:

- System... Undeliverable: Thu 2/21/2008 ... 6 ...
- Domin... You are invited to join library: Tue 9/25/2007 ... 5 ...
- Domin... You are invited to join renovations: Tue 9/25/2007 ... 5 ...
- George... NOTIFICATION : Help: Sun 9/16/2007 ... 6 ...
- RonSe... [Activities] Creat script: Sun 9/16/2007 ... 7 ...
- Franka... Message Recall: Fw: New Proposal: Tue 8/14/2007 ... 8 ...
- BettyZe... Customer IDs: Mon 8/13/2007 ... 5 ...
- BettyZe... Lufthansa Flight: Mon 8/13/2007 ... 5 ...
- DanMi... We got tickets for the Red Sox: Mon 8/13/2007 ... 4 ...

A contact card for **Dan Misawa** is displayed over the inbox, showing a profile picture, name, title (Northeast Manager), email (DanMisawa@renovations.com), phone number (1-415-555-1001), and address (225 Montgomery Street, United States). Below the card are links for Profile, Communities, Blogs, Doqear, and Activities, and buttons for Send Mail, Schedule a Meeting, and Add to Outlook Contacts.

The right sidebar, titled "IBM Lotus", shows "Activities by Priority":

- High Priority**
 - Plan an event for Renovations Jam: Heather Reeds Sat 1/19/2008 10:04 PM
 - Brainstorm for new partner marketing: Heather Reeds Fri 1/18/2008 12:25 AM
- Medium Priority**
 - Hiring process for new marketing sales rep: Heather Reeds Fri 1/18/2008 12:33 AM
 - Create RFP for Acme: Heather Reeds Fri 1/18/2008 12:28 AM
- Normal Priority**
 - Customer Briefing: Frank Adams Fri 1/18/2008 02:52 AM
 - New employee orientation for Dan Misawa: Heather Reeds Fri 1/18/2008 12:30 AM

The status bar at the bottom left indicates "33 Items".

Integration with RIM BlackBerry

Profiles

- Find the right people at the right time
- Build new relationships

Dogear

- Leverage collective knowledge and research for true teaming
- Centralized bookmark storage
- Faster information location



Agenda

- Out-of-the-box capabilities
- **Integration concepts**
- Introduction to ATOM
- Business card integration
- Summary
- Q&A



Integration patterns characteristics

- **Simple**
 - Easy to learn – HTTP based API with XML, JavaScript™ and HTML formatted output
 - Embraces “Amateur” as well as professional developers
- **Open**
 - Access for all users, regardless of client or platform
 - Based on Open standards: XML, HTTP, JavaScript, Atom
- **Extensible**
 - Leverages open standards extensibility (XML, HTTP, Atom, etc...)
 - Can be further extended by IBM, ISVs, etc...



Concepts: Architecture

Clients

Web Browser

Feed Reader

Sametime 7.5

Lotus Notes

Portlets

Your Application

HTTP Server & Proxy Cache

J2EE Container

Common Services

JMX Administration

Navigational Header

Person Card

User Directory

REST API

PUT

DELETE

POST

GET

Atom Entry

JavaScript

HTML

Atom Feed

Lotus Connections Services

Profiles

Communities

Dogear

Activities

Blogs

LDAP

TDI

RDB

File System

Other Enterprise Services

eMail

CMS

...



Concepts: “embedded” HTML basics

- “Linkrolls” – pattern to display rolls of links in blogs
- Used to insert HTML formatted code from one website to another
- Lotus Connections Services deliver HTML formatted code based on URL request
- Used when embedding application needs layout provided by service and can just provide style
- Example: using existing embeddable business card with information from profiles

```
<script source="http://connections.demoibm.com/profiles/html/card">  
document.write ("<p>Name: Frank Olmos"</p>);
```





Existing Web page

New to Java technology

- ↓ [What is Java technology?](#)
- ↓ [Why is Java technology important?](#)
- ↓ [What are the Java component technologies?](#)
- ↓ [How does Java technology relate to SOA/Web services?](#)
- ↓ [How does Java technology relate to open source software development?](#)
- ↓ [How can I improve my Java programming skills?](#)
- ↓ [What IBM tools and products are available for Java programmers?](#)

The developerWorks Java™ technology zone contains hundreds of articles, tutorials, and tips to help software developers make the most of the Java platform and related technologies. But when you're looking for a place to get started, sifting through the volume of resources available on the Web today can be overwhelming. developerWorks offers this page to provide an overview of Java technology basics within the overall context of the language. It includes starting points for further investigation in the form of links to relevant introductory developerWorks content, other educational resources, and IBM downloads and products.

What is Java technology?

Java technology is both a high-level, object-oriented programming language and a platform. Java technology is based on the concept of a single Java virtual machine (JVM) -- a translator between the language and the underlying software and hardware. All implementations of the programming language must emulate the JVM, enabling Java programs to run on any system that has a version of the JVM.

The *Java programming language* is unusual because Java programs are both *compiled* (translated into an intermediate language called Java bytecode) and *interpreted* (bytecode parsed and run by the JVM). Compilation occurs once, and interpretation happens each time the program runs. Compiled bytecode is a form of optimized machine code for the JVM; the interpreter is an implementation of the JVM.

The *Java platform* is a software-only platform that runs on top of various hardware-based platforms. It comes in three versions (see [Multiple editions of the Java platform](#), below). It consists of the JVM and the Java Application Programming Interface (API), a large collection of ready-made software components (classes) that ease the development and deployment of applets and applications, including robust, secure, and interoperable enterprise applications. It spans everything from basic objects, to networking and security, to XML generation and Web services. The Java API is grouped into libraries of related classes and interfaces; the libraries are known as *packages*.

Along with the Java API, every full implementation of the Java platform includes:

- Development tools for compiling, running, monitoring, debugging, and documenting applications.
- Standard mechanisms for deploying applications to users.
- User interface toolkits that make it possible to create sophisticated graphical user interfaces (GUIs).
- Integration libraries that enable database access and manipulation of remote objects.

Java technology was developed by Sun Microsystems. The Java Community Process (JCP), an open organization of international Java developers and licensees, develops and revises Java technology specifications, reference implementations, and technology compatibility kits. In August 2006, Sun Microsystems announced its intention to open source the Java platform in stages and began soliciting feedback on the best approaches for licensing and governance.

[↑ Back to top](#)

Why is Java technology important?

developerWorks

Document options

Set printer orientation to landscape mode
 Print this page
 Email this page

More resources

- [Eclipse.org](#)
- [Sun's official timeline](#)
- [Java SE](#)
- [Java EE](#)
- [Java ME](#)
- [Java Community Process \(JCP\)](#)
- [Java certification](#)
- [XP.org](#)

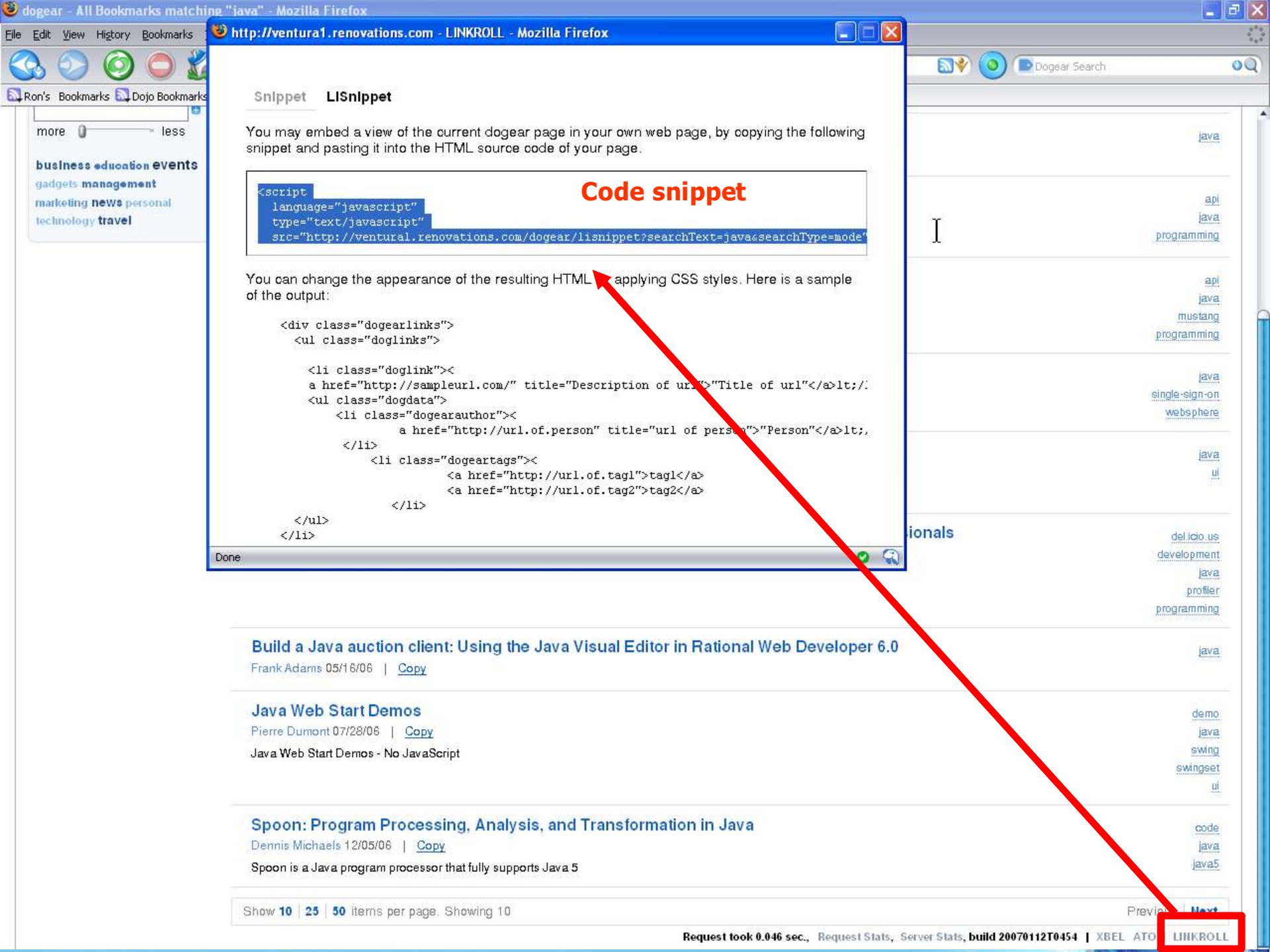
Special offers

- Webcasts: IBM software development tools and resource
- PowerPack: New eval software demos, & more.
- Register for the complimentary IBM Technical Briefing

[→ More offers](#)

Related bookmarks

[About the Java](#)



http://ventura1.renovations.com - LINKROLL - Mozilla Firefox

Snippet LISnippet

You may embed a view of the current dogear page in your own web page, by copying the following snippet and pasting it into the HTML source code of your page.

```
<script
  language="javascript"
  type="text/javascript"
  src="http://ventura1.renovations.com/dogear/lisnippet?searchText=java&searchType=mode"
```

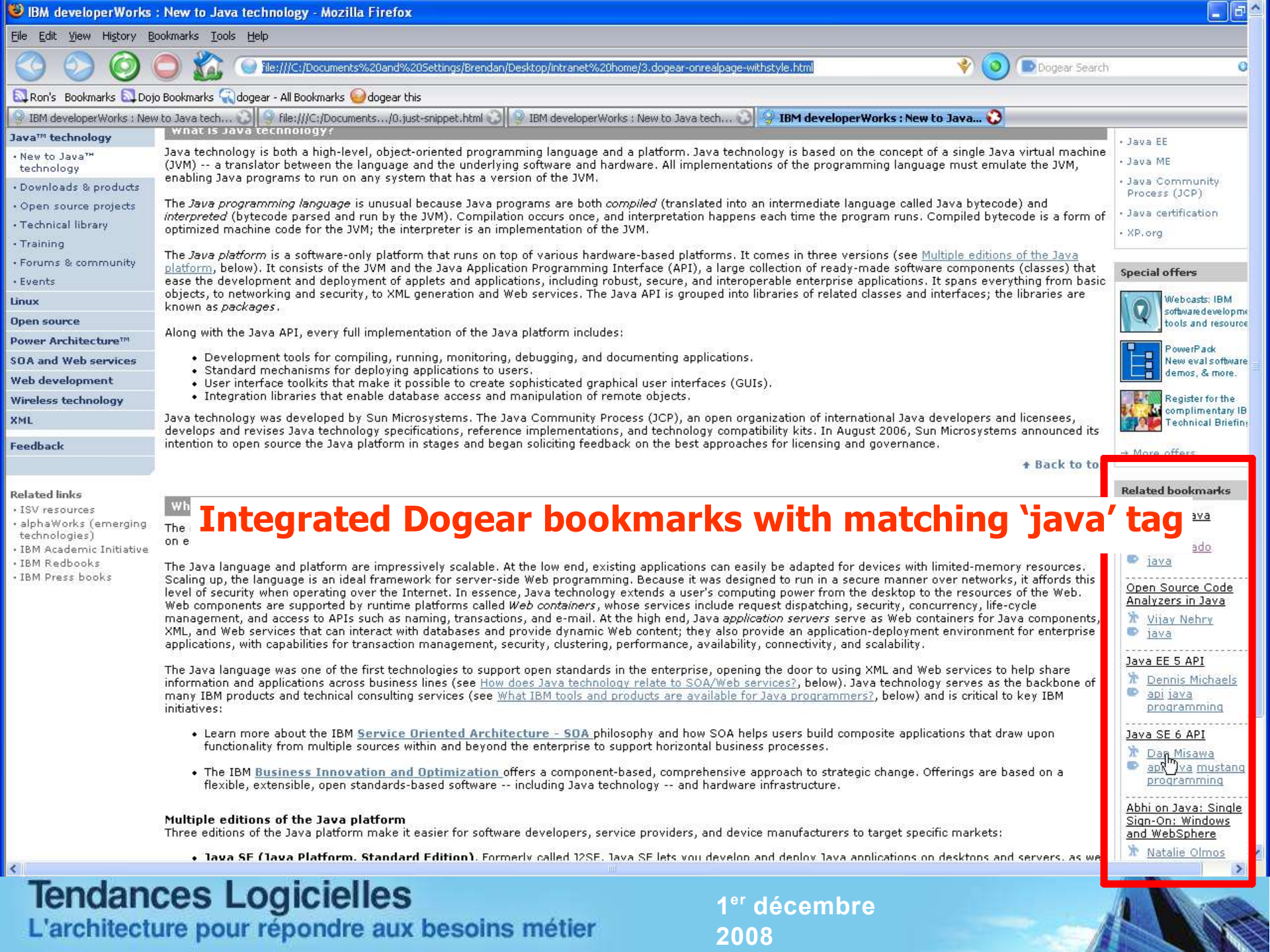
Code snippet

You can change the appearance of the resulting HTML applying CSS styles. Here is a sample of the output:

```
<div class="dogearlinks">
  <ul class="doglinks">

    <li class="doglink"><
      a href="http://sampleurl.com/" title="Description of url">"Title of url"</a>It;/:
    <ul class="dogdata">
      <li class="dogearauthor"><
        a href="http://url.of.person" title="url of person">"Person"</a>It;,
      </li>
      <li class="dogeartags"><
        <a href="http://url.of.tag1">tag1</a>
        <a href="http://url.of.tag2">tag2</a>
      </li>
    </ul>
  </li>
</ul>
</div>
```

- Build a Java auction client: Using the Java Visual Editor in Rational Web Developer 6.0**
Frank Adams 05/16/06 | [Copy](#)
- Java Web Start Demos**
Pierre Dumont 07/28/06 | [Copy](#)
Java Web Start Demos - No JavaScript
- Spoon: Program Processing, Analysis, and Transformation in Java**
Dennis Michaels 12/05/06 | [Copy](#)
Spoon is a Java program processor that fully supports Java 5



- Java™ technology
 - New to Java™ technology
 - Downloads & products
 - Open source projects
 - Technical library
 - Training
 - Forums & community
 - Events
- Linux
- Open source
- Power Architecture™
- SOA and Web services
- Web development
- Wireless technology
- XML
- Feedback

What is Java technology?

Java technology is both a high-level, object-oriented programming language and a platform. Java technology is based on the concept of a single Java virtual machine (JVM) -- a translator between the language and the underlying software and hardware. All implementations of the programming language must emulate the JVM, enabling Java programs to run on any system that has a version of the JVM.

The *Java programming language* is unusual because Java programs are both *compiled* (translated into an intermediate language called Java bytecode) and *interpreted* (bytecode parsed and run by the JVM). Compilation occurs once, and interpretation happens each time the program runs. Compiled bytecode is a form of optimized machine code for the JVM; the interpreter is an implementation of the JVM.

The *Java platform* is a software-only platform that runs on top of various hardware-based platforms. It comes in three versions (see [Multiple editions of the Java platform](#), below). It consists of the JVM and the Java Application Programming Interface (API), a large collection of ready-made software components (classes) that ease the development and deployment of applets and applications, including robust, secure, and interoperable enterprise applications. It spans everything from basic objects, to networking and security, to XML generation and Web services. The Java API is grouped into libraries of related classes and interfaces; the libraries are known as *packages*.

Along with the Java API, every full implementation of the Java platform includes:

- Development tools for compiling, running, monitoring, debugging, and documenting applications.
- Standard mechanisms for deploying applications to users.
- User interface toolkits that make it possible to create sophisticated graphical user interfaces (GUIs).
- Integration libraries that enable database access and manipulation of remote objects.

Java technology was developed by Sun Microsystems. The Java Community Process (JCP), an open organization of international Java developers and licensees, develops and revises Java technology specifications, reference implementations, and technology compatibility kits. In August 2006, Sun Microsystems announced its intention to open source the Java platform in stages and began soliciting feedback on the best approaches for licensing and governance.

- Java EE
 - Java ME
 - Java Community Process (JCP)
 - Java certification
 - XP.org
- Special offers**
- Webcasts: IBM software development tools and resource
 - PowerPack: New eval's software demos, & more.
 - Register for the complimentary IBM Technical Briefing
- More offers

- Related links**
- ISV resources
 - alphaWorks (emerging technologies)
 - IBM Academic Initiative
 - IBM Redbooks
 - IBM Press books

What is Java technology?

The Java language and platform are impressively scalable. At the low end, existing applications can easily be adapted for devices with limited-memory resources. Scaling up, the language is an ideal framework for server-side Web programming. Because it was designed to run in a secure manner over networks, it affords this level of security when operating over the Internet. In essence, Java technology extends a user's computing power from the desktop to the resources of the Web. Web components are supported by runtime platforms called *Web containers*, whose services include request dispatching, security, concurrency, life-cycle management, and access to APIs such as naming, transactions, and e-mail. At the high end, *Java application servers* serve as Web containers for Java components, XML, and Web services that can interact with databases and provide dynamic Web content; they also provide an application-deployment environment for enterprise applications, with capabilities for transaction management, security, clustering, performance, availability, connectivity, and scalability.

The Java language was one of the first technologies to support open standards in the enterprise, opening the door to using XML and Web services to help share information and applications across business lines (see [How does Java technology relate to SOA/Web services?](#), below). Java technology serves as the backbone of many IBM products and technical consulting services (see [What IBM tools and products are available for Java programmers?](#), below) and is critical to key IBM initiatives:

- Learn more about the IBM [Service Oriented Architecture - SOA](#) philosophy and how SOA helps users build composite applications that draw upon functionality from multiple sources within and beyond the enterprise to support horizontal business processes.
- The IBM [Business Innovation and Optimization](#) offers a component-based, comprehensive approach to strategic change. Offerings are based on a flexible, extensible, open standards-based software -- including Java technology -- and hardware infrastructure.

Multiple editions of the Java platform

Three editions of the Java platform make it easier for software developers, service providers, and device manufacturers to target specific markets:

- Java SE (Java Platform, Standard Edition).** Formerly called J2SE. Java SE lets you develop and deploy Java applications on desktops and servers, as well

- Related bookmarks**
- java
 - ado
 - java
 - Open Source Code Analyzers in Java
 - Vijay Nehry
 - java
 - Java EE 5 API
 - Dennis Michaels
 - api java programming
 - Java SE 6 API
 - Dan Misawa
 - api java mustang programming
 - Abhi on Java: Single Sign-On: Windows and WebSphere
 - Natalie Olmos

Integrated Dogear bookmarks with matching 'java' tag

Concepts: REST architectural style

- Stateless service
 - Well suited for clusters, proxy caches, and remote client mashups.
- URI addressable resources
 - Nouns in address are clearly defined and easily manipulated by client applications.
- Standards driven interfaces
 - ATOM, RSS, XBEL, JavaScript
- Layered
 - Leverage the scalability and security of existing proxy caches and firewalls.



REST architectural style, Dogear example

OUTPUT FORMAT

CONSTRAINT

`http://dogear.ibm.com/html?user=JRussell@us.ibm.com`

OUTPUT FORMAT

CONSTRAINT

CONSTRAINT

`http://dogear.ibm.com/atom?tag=marketing&user=JRussell@us.ibm.com`

OUTPUT FORMATS

CONSTRAINTS

`/html`
`/rss`
`/atom`
`/js`
`/xbel`

`tag=`
`user=`
`searchText=`
`network=`
`access=`



Concepts: JavaScript Object Notation (JSON) basics

- Used to retrieve content for usage in JavaScript applications from one website to another
- Lotus Connections Services deliver JavaScript formatted code based on URL request
- Used when embedding application needs maximum control of layout and style
- Example: creating a customized embeddable business card with information from profiles

```
<script source="http://connections.demoibm.com/profiles/json/card">  
businessCard.nameProperty = "Frank Olmos";
```

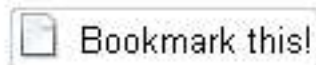


Concepts: “Bookmarklets”

- Used to create information in other website from data in existing site
- Uses javascript: URL capability from browser
 - `Javascript:alert ("hello world");`
- Obtains information from existing application web page and encodes as URL arguments
- Manufactures URL for sending information onto separate website

<https://server/service/function?arg=encodedArgs>

- Example



Drag this button to your
browser's links toolbar.



Lotus Connections services

	Atom	JSON	eHTML	REST/APP
 Profiles	<input checked="" type="checkbox"/>	<input checked="" type="checkbox"/>		<input checked="" type="checkbox"/>
 Communities	<input checked="" type="checkbox"/>	<input checked="" type="checkbox"/>		<input checked="" type="checkbox"/>
 Blogs	<input checked="" type="checkbox"/>	<input checked="" type="checkbox"/>		<input checked="" type="checkbox"/>
 Dogear	<input checked="" type="checkbox"/>	<input checked="" type="checkbox"/>	<input checked="" type="checkbox"/>	<input checked="" type="checkbox"/>
 Activities	<input checked="" type="checkbox"/>	<input checked="" type="checkbox"/>		<input checked="" type="checkbox"/>



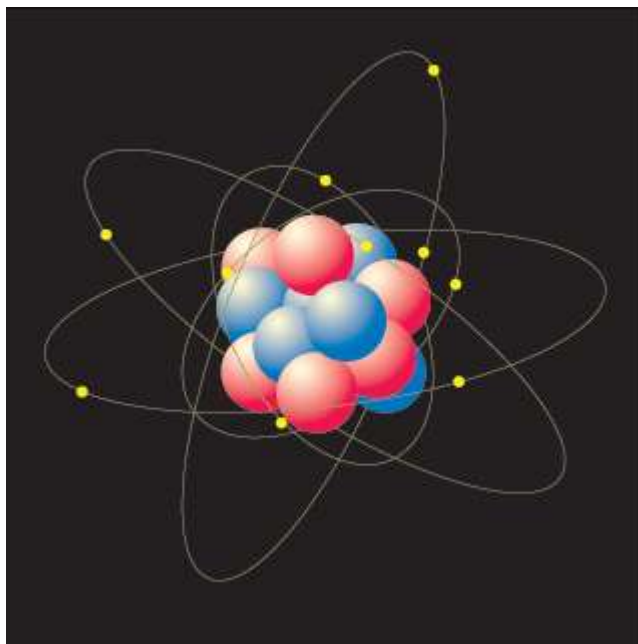
Agenda

- Out-of-the-box capabilities
- Integration capabilities
- **Introduction to ATOM**
- Business card integration
- Summary
- Q&A



Lotus Connections APIs

- Lotus Connections APIs are based on Atom standard
- No!
 - You don't need to use your college Physics textbook



Introduction to Atom

- What is Atom?
 - Similar to RSS – places content into machine parseable file
 - RSS 1.0 --> Too complicated
 - RSS 2.0 --> Too loosely defined
- Atom spec developed by volunteers using a Wiki
- It's really a pair of standards



Introduction to Atom (cont'd)

- More specifically, it uses Atom Publishing Protocol (APP)
 - HTTP-based application-level protocol for publishing using Atom Syndication Format (ASF)
 - Requires two documents: **Service** and **Category**
 - Service allows feed discovery
 - Category lists categories for collections / web content
- ASF is a well-formed XML
 - Commonly used for blog feeds (similar to RSS)



Atom vs Web Services

- How does Atom compare to SOAP / Web Services ?
- SOAP is open-ended – service defines the XML
- Atom already has constructs defined
 - Person
 - Entry
 - Feed, etc
- You can have your own elements by extending XML
- Atom leverages existing HTTP actions: GET, POST, PUT, DELETE
 - No longer need to write your own web service (getPost(), createPost(), etc...



The nitty-gritty

- Atom has two types of documents:
 - Feed
 - Entry
- A feed document contains metadata about itself and 1 or more entries
- An entry contains elements such as 'id', 'title', and 'content'

```
<?xml version="1.0" encoding="utf-8"?>
  <entry xmlns="http://www.w3.org/2005/Atom">
    <title>Atom Entry Document</title>
    <link href="http://localhost/atom/overview/entry"/>
    <id>urn:uuid:9896c695-erd58-4ebb-asfr-80da344efa6a</id>
    <updated>2003-12-13T18:30:02Z</updated>
    <author>
      <name>Jane Doe</name>
      <email>janedoe@activities.com</email>
    </author>
    <content>Atom Entry document must have non-empty "title", "id", and "updated" elements and a
root of an entry document is "entry".
Identified with the "application/atom+xml" media type
    </content>
  </entry>
```



Developing Atom apps

- Apache has open-source project called Abdera
- Provides a development toolkit
- Can be used to develop Atom clients



Getting someone's bookmarks

```
public static void main(String[] args) {

    // Initialize the Atom call
    AtomService as = new AtomService("http", "dogear.tap.ibm.com", "luis_ben");

    // get a user's bookmarks
    HashMap bookmarks = as.getUserBookmarks("laurisa@us.ibm.com");
    Set keys = bookmarks.keySet();
    Iterator it = keys.iterator();
    while (it.hasNext())
    {
        Object key = it.next();
        Object keyValue = bookmarks.get(key);
        System.out.println("Key: " + key + " and value:" + keyValue);
    }
}

/**
 *
 * @param emailAddress
 * @return
 */
public HashMap getUserBookmarks(String emailAddress)
{
    // Call the Atom API and parse the resulting feed into a HashMap
    return parseBookmarksFeed("/atom?ps=50&email=" + emailAddress);
}
}
```

```
public HashMap parseBookmarksFeed(String atomPath)
{
    response = client.get(start + atomPath);
    HashMap hashMap = null;
    try
    {
        if(response != null && response.getStatus() == 200)
        {
            hashMap = new HashMap();
            InputStream in = response.getInputStream();
            if(in != null)
            {
                Parser parser = abdera.getParser();
                Document doc = (Document)parser.parse(in);
                Feed feed = (Feed)doc.getRoot();

                if(feed != null)
                {
                    List links = feed.getEntries();

                    if( links != null)
                    {
                        Iterator iterator = links.iterator();
                        while( iterator.hasNext())
                        {
                            Entry entry = (Entry)iterator.next();
                            if( entry != null)
                            {
                                List entryLinks = entry.getLinks();
                                Link link = (Link) entryLinks.get(0);
                                if(link != null)
                                {
                                    hashMap.put(link.getHref(), entry);
                                }
                            }
                        }
                    }
                }
            }
        }
    }
}
```



Agenda

- Out-of-the-box capabilities
- Integration capabilities
- Introduction to ATOM
- **Business card integration**
- Summary
- Q&A



Business card integration

- Lotus Connections Profiles provides a 'business card' service
- You can work with business cards in Profiles in the following ways:
 - Add them to a Web page.
 - Customize them by adding extra fields.
- Allows developers to expose Profile information on their apps
 - Rich client
 - Web
 - Etc



Business card integration

- Customizable via XML definition - **LotusConnections-config.xml**
- Surfaced in web applications via javascript / JSON injection
- Sametime awareness capable

- First step: include the semantic tag JavaScript on your HTML's HEAD element

```
<script type="text/javascript" src="http://profiles.demoibm.com/profiles/  
    ibm_semanticTagServlet/javascript/semanticTagService.js" >  
</script>
```



Business card integration

- **For inline:**

```
<div class="vcard X-person-display-inline">
  <span class="fn" style="display:none;">
    <user_name>
  </span>
  <span class="email" style="display:none;">
    <user_email_address>
  </span>
</div>
```



- **Pop-up card:**

```
<span class="vcard">
  <a href="javascript:void(0);" class="fn url">
    <user_name>
  </a>
  <span class="email" style="display:none;">
    <user_email_address>
  </span>
</span>
```



Business Card XML Extensions

- Via *LotusConnections-config.xml* file, you can add third-party links to the Profiles business card.

Attribute	Description
person_card_service_url_pattern	Represents the URL pattern that is used when a user clicks on the service link. "&" must be expressed as "&" in the pattern. This attribute takes a string value.
person_card_service_name_js_eval	Represents a JavaScript™ statement that is used by the framework to generate the text displayed in the business card for the given service. This attribute takes a string value.

```
<sloc:serviceReference serviceName="googleService"
href="http://www.google.com" enabled="true"
ssl_href="http://www.google.com" ssl_enabled="false"
person_card_service_url_pattern="/search?hl=en&amp;q={email}&amp;btnG=Google
+Search"
person_card_service_name_js_eval="Google Me"/>
```

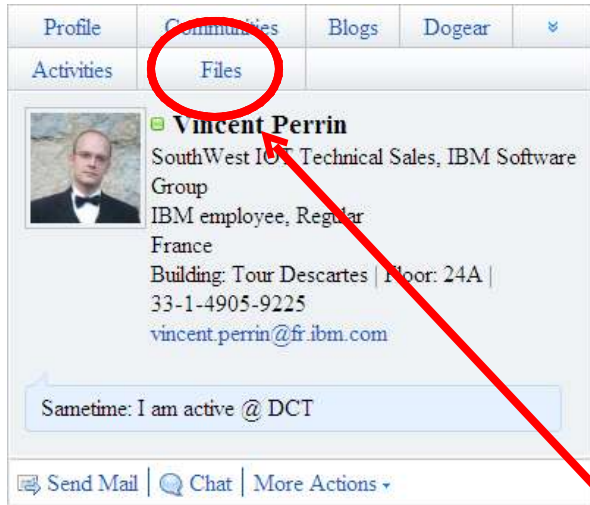
```
<sloc:serviceReference serviceName="quickr"
href="http://quickrdomino.tap.ibm.com/servlet" enabled="true"
ssl_href="https://quickrdomino.tap.ibm.com/servlet" ssl_enabled="true"
person_card_service_url_pattern="/QuickrEntry?email={email}"
person_card_service_name_js_eval="generalrs.label_personcard_quickrlink"/>
```

Edit the service-location.xsd file to define the service names used.

```
<xsd:simpleType name="serviceNames">
  <xsd:restriction base="xsd:string">
    ...
    <xsd:enumeration value="personTag" />
    <xsd:enumeration value="homepage" />
    <xsd:enumeration value="googleService" />
    <xsd:enumeration value="quickr" />
  </xsd:..>
</xsd:..>
```



Business Card XML Extensions



```
<sloc:serviceReference serviceName="quickr"
href="http://www.myquickrserver.mycompany.com/serMet"
enabled="true"
ssl_href="https://<www.myquickrserver.mycompany.com>/serMet"
ssl_enabled="true"
person_card_service_url_pattern="/QuickrEntry?email={email}"
person_card_service_name_js_eval="generalrs.label_personcard_quickrlink"/>
```



Business Card: Javascript Extensions

- You can add third-party links to the Profiles business card using JavaScript™.
- Invoke `SemTagPerson.services.push` from your JavaScript code to add an additional service, and define the following parameters:

Parameter	Description
name	Used internally by the framework to identify the service. This value must be unique. This parameter takes a string value.
url_pattern	Equivalent to the <code>person_card_service_url_pattern</code> attribute in the XML configuration document. This parameter takes a string value.
js_eval	Equivalent to the <code>person_card_service_name_js_eval</code> attribute in the XML configuration document. This parameter takes a string value.
location	The location and <code>url_pattern</code> are combined into one URL before the link is displayed.



Business Card: Javascript Extensions

```

<script>
function addServiceLinks()
{
  var callback = function()
  {
    SemTagPerson.services.push({name: 'googleService',
    url_pattern: '/search?hl=en&q={displayName}&btnG=Google
+Search',
    js_eval: "Google Me",
    location: 'http://www.google.com'});
  }
  setTimeout(callback, 1000); //allow time for js code to be
downloaded
}
</script>
<body onload="addServiceLinks()">

```

Profile	Communities	Blogs	Dogear	⌵
Activities	Files	Google Me		

Vincent Perrin
 SouthWest IOT Technical Sales, IBM Software Group
 IBM employee, Regular
 France
 Building: Tour Descartes | Floor: 24A |
 33-1-4905-9225
 vincent.perrin@fr.ibm.com

Sametime: I am active @ DCT

Send Mail | Chat | More Actions ▾



Agenda

- Integration capabilities
- Introduction to ATOM
- Out-of-the-box capabilities
- Business card integration
- **Summary**
- Q&A



Summary

- **Simple**
 - Easy to learn – HTTP based API with XML, Javascript and HTML formatted output
 - Embraces “Amateur” as well as professional developers
- **Open**
 - Access for all users, regardless of client or platform
 - Based on Open standards: XML, HTTP, JavaScript, Atom
- **Extensible**
 - Leverages open standards extensibility (XML, HTTP, ATOM, etc...)
 - Can be further extended by IBM, ISVs, etc...



References

- ATOM:
 - General information on Atom Syndication Format:
<http://www.atomenabled.org/developers/syndication/atom-format-spec.php>
 - For more information on Atom Publishing Protocol:
<http://www.ietf.org/html.charters/atompub-charter.html>
- Lotus Connections on YouTube:
<http://www.youtube.com/watch?v=LBvleFbta9I>
- The Web Site:
<http://www-306.ibm.com/software/lotus/products/connections/>
- Lotus Connections API Guide
 - http://publib.boulder.ibm.com/infocenter/ltscnct/v1r0/index.jsp?topic=/com.ibm.help.lotus.connections.api.doc/html/lcapi_welcome.html
- IBM developerWorks®
 - <http://www.ibm.com/developerworks/lotus/library/connections-deploy-pt1/>
 - <http://www.ibm.com/developerworks/lotus/library/connections-deploy-pt7>





धन्यवाद

Hindi

多謝

Traditional Chinese

ขอบพระคุณ

Thai

Спасибо

Russian

Gracias

Spanish

Tendances Logicielles

Thank You

L'architecture pour répondre aux besoins métier

English

شكراً

Arabic

Obrigado

Brazilian Portuguese

多谢

Simplified Chinese

Danke

German

Grazie

Italian

Merci

French

நன்றி

Tamil

ありがとうございました

Japanese

감사합니다

Korean

QUESTIONS

