



IBM Tivoli Service Management & End to End Infrastructure Management

Mike Kott
IBM Tivoli Market Management
Los Angeles, CA
mkott@us.ibm.com

September 2006

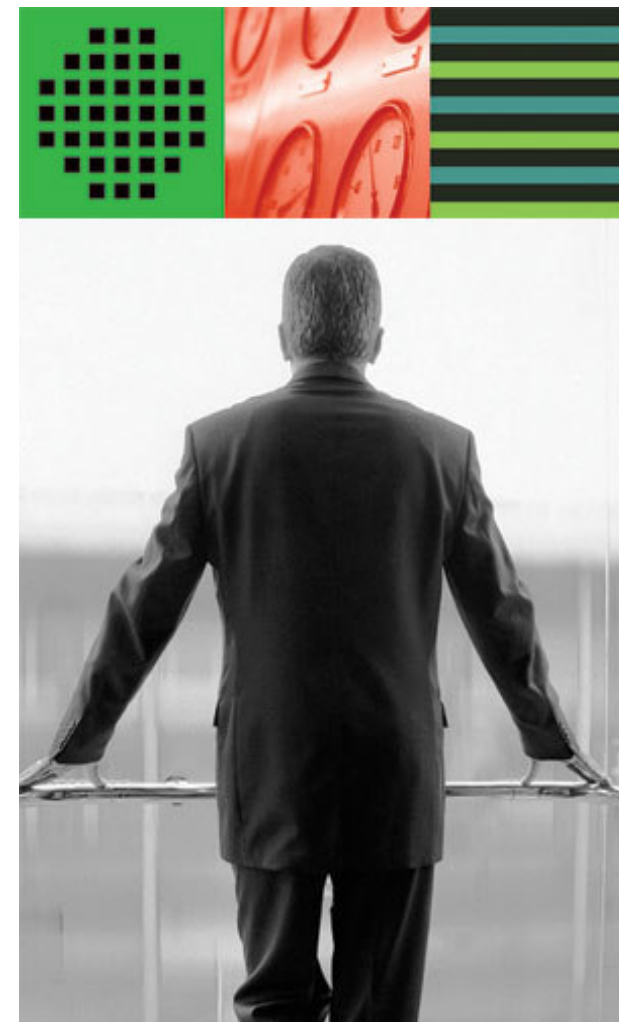
Statement Of Direction And Intent

- All statements of direction or intent are provided for planning purposes only and are subject to change or withdrawal without notice
 - This presentation represents our current goals and objectives
 - We are listening to customer views on the future directions of our solutions



Agenda

- IT Service Management
- z/OS Portfolio
- Tivoli Enterprise Portal and Integration
- Tivoli Technology Preview Announcement
- New OMEGAMON 4.1.0 Features
- ITSM & Infrastructure Management Summary



IT Organizations Face Tremendous Challenges

Challenges are coming from many fronts:

- **Change:** Market demands, workloads, service levels
- **Compliance:** Regulations, security, audit capabilities
- **Complexity:** Heterogeneous resources, organizational silos, composite applications
- **Cost:** Management and administration

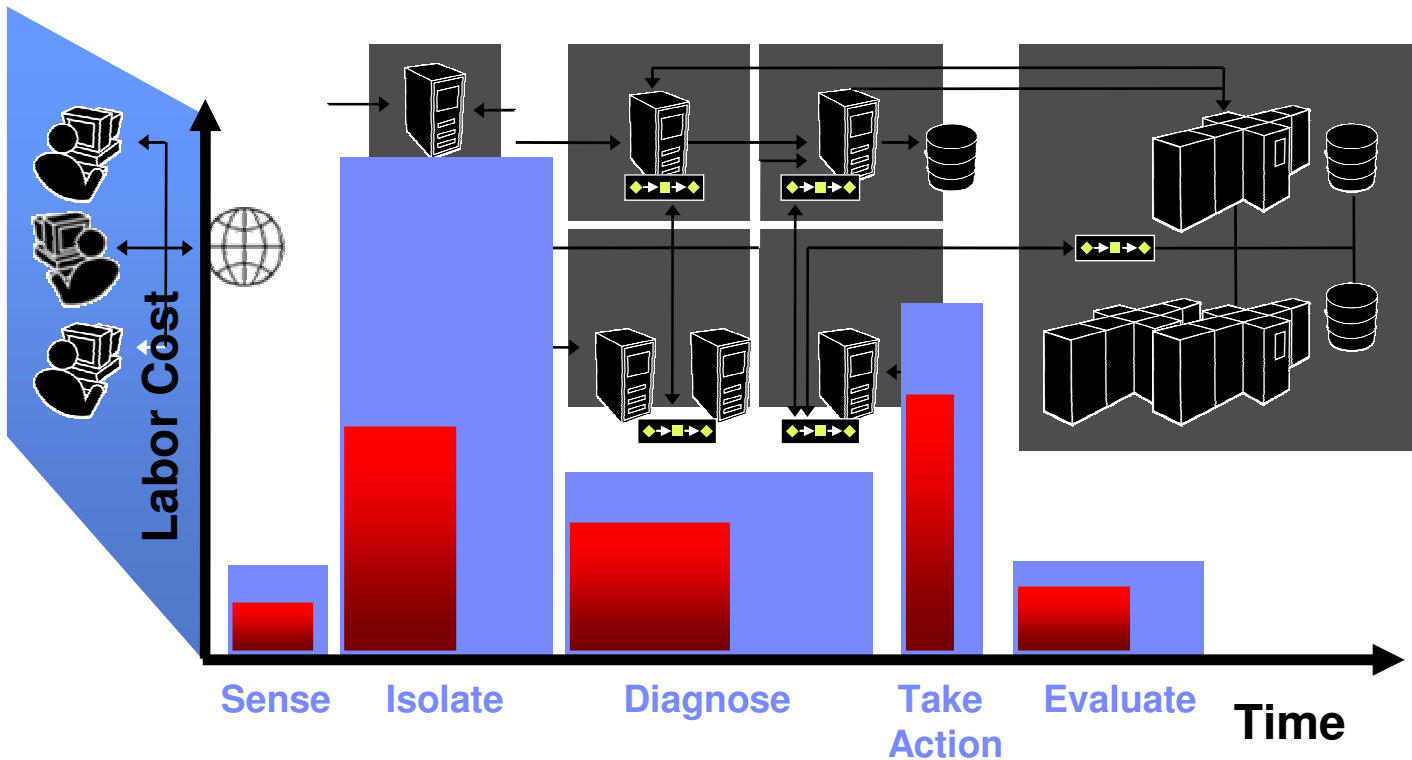


Organizational Complexity Compounds the Problem

Managing composite applications across IT silos is major challenge



- Availability Management
- Change Management
- Service Level Management
- Security Management
- Information Lifecycle Management
- Release Management



IT Operational Management Products

Integrated across silos through the ITSM platform to the IT process management products

IBM IT Service Management



Tivoli Product Portfolio Available TODAY!

System z Tivoli Products in Technology Preview Announcement

Business Application Management	Server, Network & Device Management	Storage Management	Security Management
<p>Products include:</p> <ul style="list-style-type: none"> ▪ Tivoli Composite Application Manager Family ▪ Tivoli Business Systems Manager ▪ Tivoli Intelligent Orchestrator ▪ Tivoli Service Level Advisor ▪ Tivoli Contract Compliance Manager ▪ Tivoli License Compliance Manager Family ▪ Netcool/Impact ▪ Netcool/RAD 	<p>Products include:</p> <ul style="list-style-type: none"> ▪ Tivoli Enterprise Console ▪ Tivoli Monitoring Family ▪ Tivoli OMEGAMON Family ▪ Tivoli NetView Family ▪ Tivoli Remote Control ▪ Tivoli System Automation Family ▪ Tivoli Workload Scheduler Family ▪ Tivoli Provisioning Manager ▪ Tivoli Configuration Manager ▪ Tivoli Decision Support for z/OS ▪ Netcool/OMNibus ▪ Netcool/Proviso ▪ Netcool/Precision ▪ Netcool/Monitors 	<p>Products include:</p> <ul style="list-style-type: none"> ▪ Tivoli Storage Manager ▪ Tivoli Continuous Data Protection for Files ▪ TotalStorage Productivity Center 	<p>Products include:</p> <ul style="list-style-type: none"> ▪ Tivoli Access Manager Family ▪ Tivoli Identity Manager Family ▪ Tivoli Federated Identity Manager Family ▪ Tivoli Directory Server ▪ Tivoli Directory Integrator Family ▪ Security Compliance Manager ▪ Tivoli Security Operations Manager

Tivoli Product Preview Announcement Summary

(Announced at SHARE Conference - Baltimore, MD August 15, 2006)

New Releases of IBM Tivoli Products

All new product releases are planned for GA during 4Q06 except as noted

Monitoring

IBM Tivoli OMEGAMON XE

- z/OS V4.1.0 *(First Quarter 2007 availability)*
- CICS on z/OS V4.1.0
- IMS on z/OS V4.1.0
- DB2 Performance Expert on z/OS V4.1.0
- DB2 Performance Monitor on z/OS V4.1.0
- Mainframe Networks V4.1.0
- Storage on z/OS V4.1.0
- z/VM and Linux V4.1.0
- IBM OMEGAMON z/OS Management Console V4.1.0 *(First Quarter 2007 availability)*
- Installation and Customization Assistance Tool (ICAT) V3.1.0 – a component with OMEGAMON products
- Tivoli NetView for z/OS V5.2 Sparkler Release
- Web Access v1.3 for InfoMan Sparkler Release

New Releases of IBM Tivoli Products

All new product releases are planned for GA during 4Q06 except as noted

Application Management

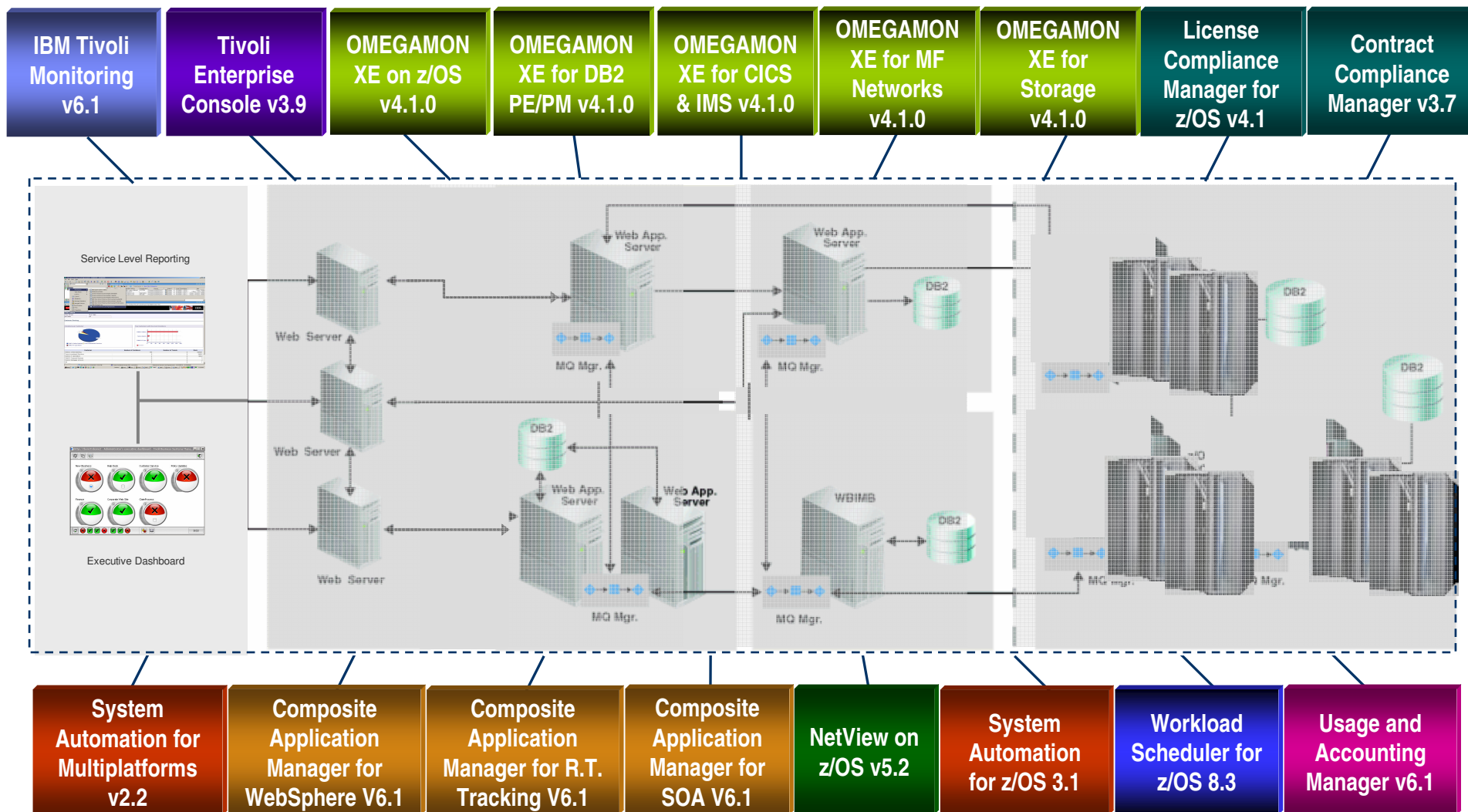
- IBM Tivoli Composite Application Manager (ITCAM)
 - WebSphere V6.1 and ITCAM for J2EE V6.1
 - SOA V6.1
 - Response Time Tracking V6.1 (Available now)

Automation

- IBM Tivoli System Automation
 - z/OS 3.1 – sparkler for TWS integration
 - Multiplatforms v2.2
- Tivoli Workload Scheduler
 - z/OS v8.2 – sparkler for TSA integration
 - z/OS v8.3

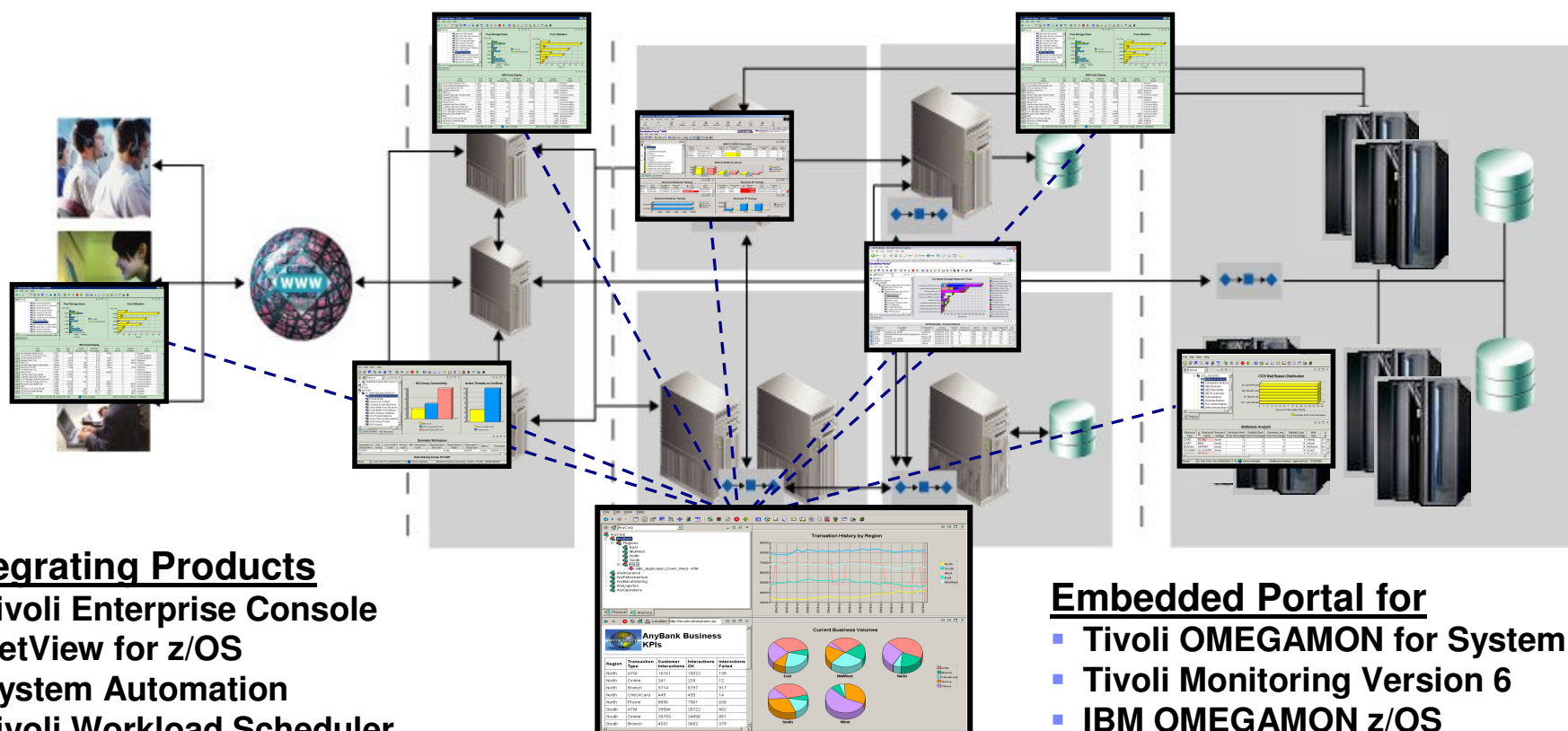
End to End Management from Tivoli

System z Portfolio



Complete View Of Application Performance

A Dynamic Role-based Policy Workspace for Integrating IT Operations Silos



Integrating Products

- Tivoli Enterprise Console
- NetView for z/OS
- System Automation
- Tivoli Workload Scheduler
- Tivoli Monitoring Version 5
- Tivoli Service Level Advisor
- Tivoli Business Systems Manager

Tivoli Enterprise Portal (TEP)

Embedded Portal for

- Tivoli OMEGAMON for System z
- Tivoli Monitoring Version 6
- IBM OMEGAMON z/OS Management Console
- Tivoli Composite Application Manager Family

Integrated End to End Support for Heterogeneous Environments

Available with IBM Tivoli Monitoring 6.1, OMEGAMON & Composite Application Manager

IBM Tivoli monitoring spans the breadth of your IT environment and provides fast time to value because it's so easy to deploy!

Platforms	Databases	Applications	Business Integration	Web Infrastructure	Messaging & Collaboration	Universal Agent
Unix	DB2 (Z & Distributed)	SAP	Web Services	WebSphere (Z & Distributed)	Lotus Domino	Agent-less Adapter URL, SNMP, File, Socket, UDB.... Agent Quick attach API
Windows		.NET (full suite of MS apps)	CICS			
Cluster(s)	Oracle		SOA	Exchange		
Linux	SQL	Citrix	IMS		iPlanet	
z/VM	Sybase	Siebel	WebSphere MQ	Apache		95+ Custom Packages available for modification
z/OS		Informix	Tuxedo	WebSphere MQ Integrator	WebLogic	
VMWare						
OS/400						Netcool

SQLSVRSQLSTATSTABLE - ITMX13 - SYSADMIN

File Edit View Help

View: Physical

Enterprise

- UNIX Systems
- Linux Systems
- Windows Systems
- ITMX13
 - Citrix Access Suite
 - DB2 - DB2:ITMX13:UD
 - HACMP Cluster Agent
 - Microsoft SQL Server - ITMX13
 - Universal Agent
 - 9-42-48-0:SNMP-MANAGER00
 - candlex13:MICROMUSESSM00
 - AVAILABILITY
 - EVENT_LOG
 - GENALARMCONTROLTABLE
 - GENALARMDATATABLE
 - ISISFTP
 - ISISFTPSITETABLE
 - ISGLOBAL
 - ISSMTPSERVERTABLE
 - ISWEB
 - ISWEBASP
 - ISWEBSITETABLE
 - PERFORMANCE_OBJECT_STATUS

r50pa2b - Tivoli Enterprise Console: AllEvents

Total: 4 Selected: 1

Time Received	Class	Hostname	Severity	Status	Message
January 6, 2006 6:51:49 AM EST	TMV_Clearing	p4pa2kk	Harmless	Open	The problem described by 'VMwareAvailability_IVL_ApplicationUnavailable' no longer exists
January 6, 2006 7:04:51 AM EST	ITM_Generic	itm14b.tivlab.ral...	Minor	Open	TEMS <itm14b.tivlab.raleigh.ibm.com> restarted
January 7, 2006 4:33:59 AM EST	TMV_Clearing	p4pa2kk	Harmless	Open	The problem described by 'TMW_HighProcesses' no longer exists.
January 7, 2006 5:43:26 AM EST	TMV_Clearing	p4pa2kk	Harmless	Open	The problem described by 'TMW_HighProcesses' no longer exists.

Micromuse Active Event List

All Events Default Top [OFF]

	Last Occurrence	Count	Type
	2/17/2006 10:47:27 AM	1	Problem
ed	2/17/2006 9:38:00 AM	1	Problem
	2/17/2006 9:38:00 AM	2	Problem
	2/17/2006 10:48:34 AM	1	Problem
	2/17/2006 10:29:04 AM	1	Problem
	2/17/2006 10:57:19 AM	97	Type Not Set

Physical

SQL Server Statistics

SQL Server Attempts vs. Failed

- SQLSVRSQLSTATSATMPTAUTOPARAM
- SQLSVRSQLSTATSFAILEDAUTOPARAM

SQL Server Statistics

SQL Server Statistics

- SQLSVRSQLSTATSATMPTAUTOPARAM
- SQLSVRSQLSTATSBATCHREQ
- SQLSVRSQLSTATSFAILEDAUTOPARAM
- SQLSVRSQLSTATSSQLCOMP

Hub Time: Fri, 02/17/2006 11:01 AM

Server Available

SQLSVRSQLSTATSTABLE - ITMX13 - SYSADMIN

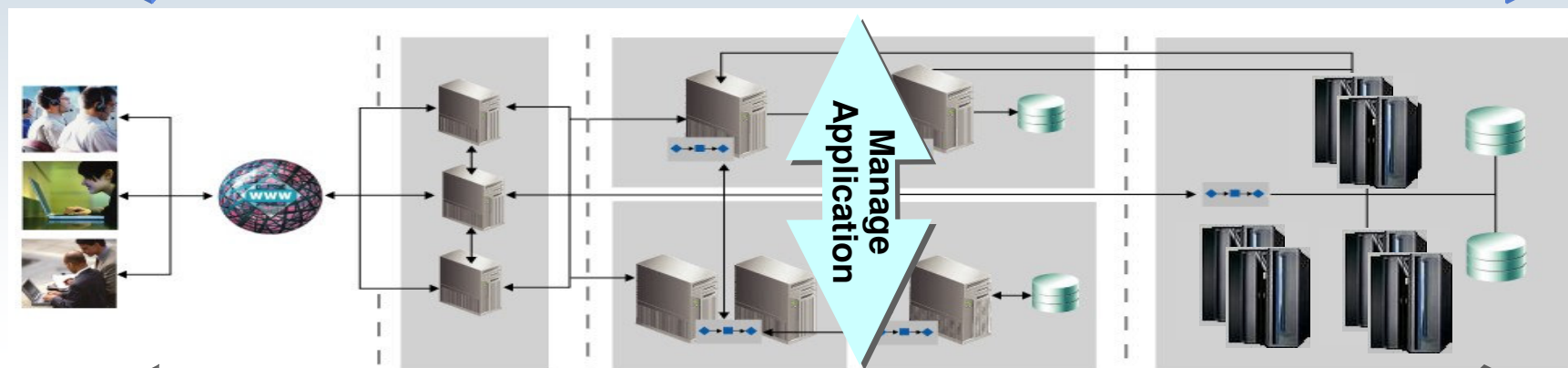
Tivoli Enterprise Portal

Everything at your Fingertips

Tivoli Composite Application Management Portfolio

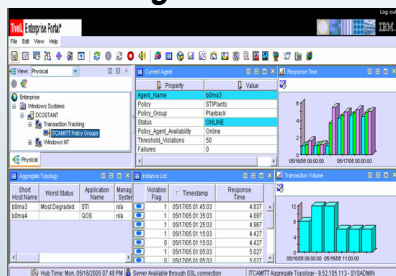
Delivering high-performing composite applications

Analyze and Measure Transactions & Services

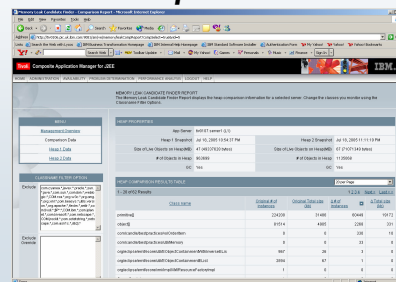


Monitor Infrastructure

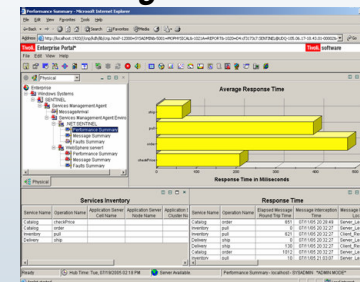
Composite Application Manager for RTT



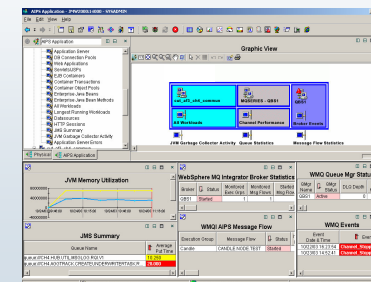
Composite Application Mgr for WebSphere & J2EE



Composite Application Manager for SOA

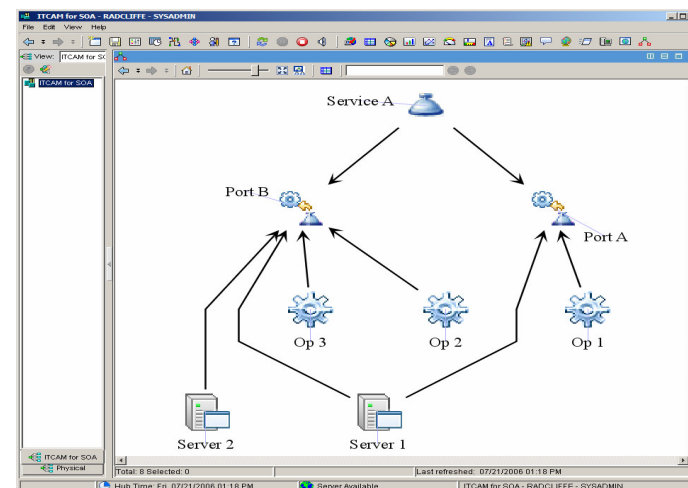


OMEGAMON XE and ITM

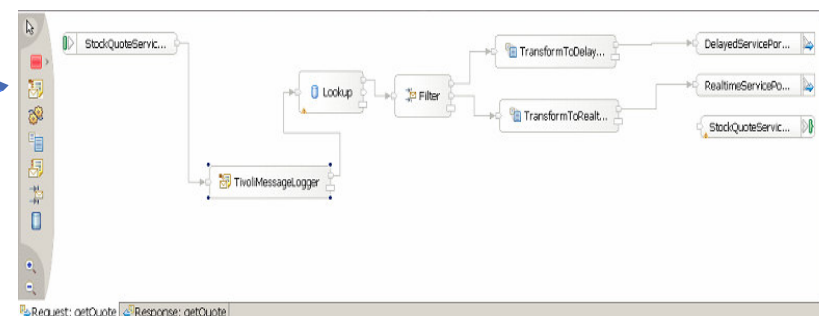


Composite Application Management for SOA 6.1

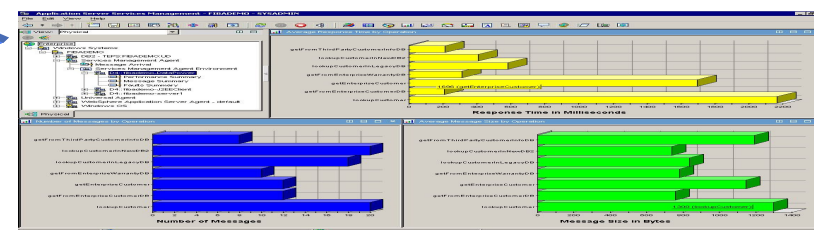
- Integration with WebSphere Service Registry and Repository



- Integration with the new WebSphere Enterprise Service Bus SCA runtime

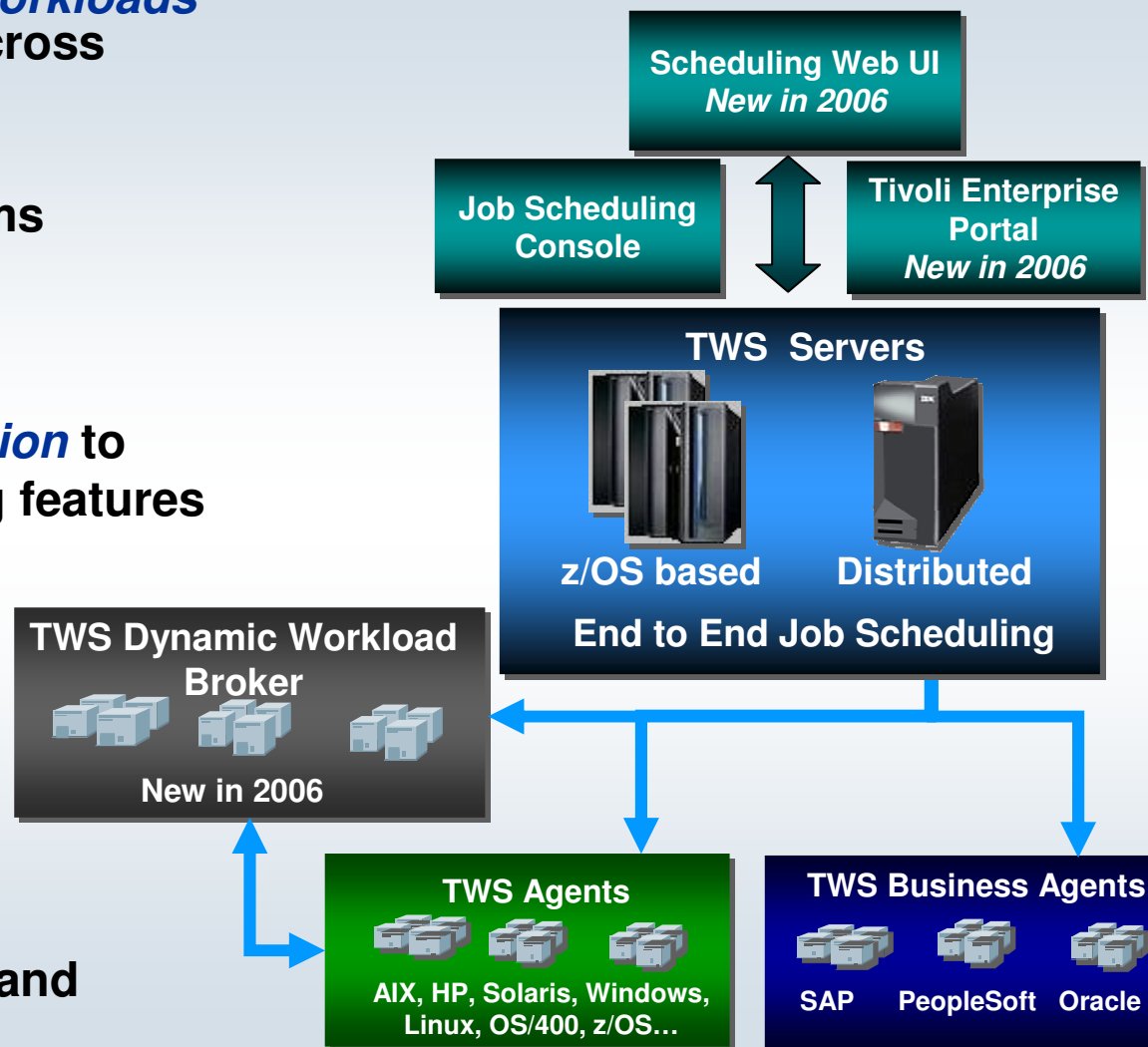


- Additional integration with WebSphere DataPower SOA Appliance through SNMP monitoring OPAL solution



IBM Tivoli Workload Scheduler

- **Single solution to integrate workloads** from multiple applications, across multiple platforms.
- **Improves availability and integrity** of production systems
- **High Availability and Fault Tolerant** architecture.
- **Enhanced TWS-WLM integration** to support new WLM scheduling features
- **New TEP integration** to monitor the status of TWS critical jobs
- **Dynamic real-time workload automation** in addition to traditional calendar and event-based scheduling
- **New Critical Path Monitoring** and management feature for TWS



System Automation & NetView for z/OS

- Enhanced **Tivoli System Automation on z/OS (TSA)** integration with Tivoli Workload Scheduler (TWS)
 - Issue TSA commands from within the TWS console
 - TEP launch in context to TSA
- **TSA Multiplatform** provides integration with IBM High Availability Cluster Multiprocessing (HACMP) and Microsoft Server Cluster Service (MSCS)
 - Centrally manage high availability for composite applications running in heterogeneous environments
- **Tivoli NetView on z/OS** enhanced TEP integration
 - With OMEGAMON XE for Mainframe Networks and new interoperability with OMEGAMON XE for z/OS, DB2 PE/PM, and CICS

Major New Common OMEGAMON Capabilities

- **Delivered CCMDB TEP Discovery Library Adapter**
- **Added Globalization to Group 1 languages**
 - French, German, Italian, Spanish, Portuguese, Chinese (simple & traditional), Japanese, Korean
- **Extended Interoperability via Dynamic Workspace Linking**
 - intelligently link to other workspaces using the context available at the time of link execution to reduce problem resolution time
- **Added z9 Integrated Information Processor (zIIP) monitoring in OMEGAMON XE on z/OS & XE on DB2 PE/PM on z/OS**
 - Day 1 support via service for OMEGAMON XE z/OS and DB2 PE/PM V3.1.0 via PTF and enhanced support in 4.1.0
 - zIIP address spaces, service classes, LPAR data, DDF server thread data, workloads eligible for zIIP that are running on standard CPUs

Major New Common OMEGAMON Capabilities (Cont)

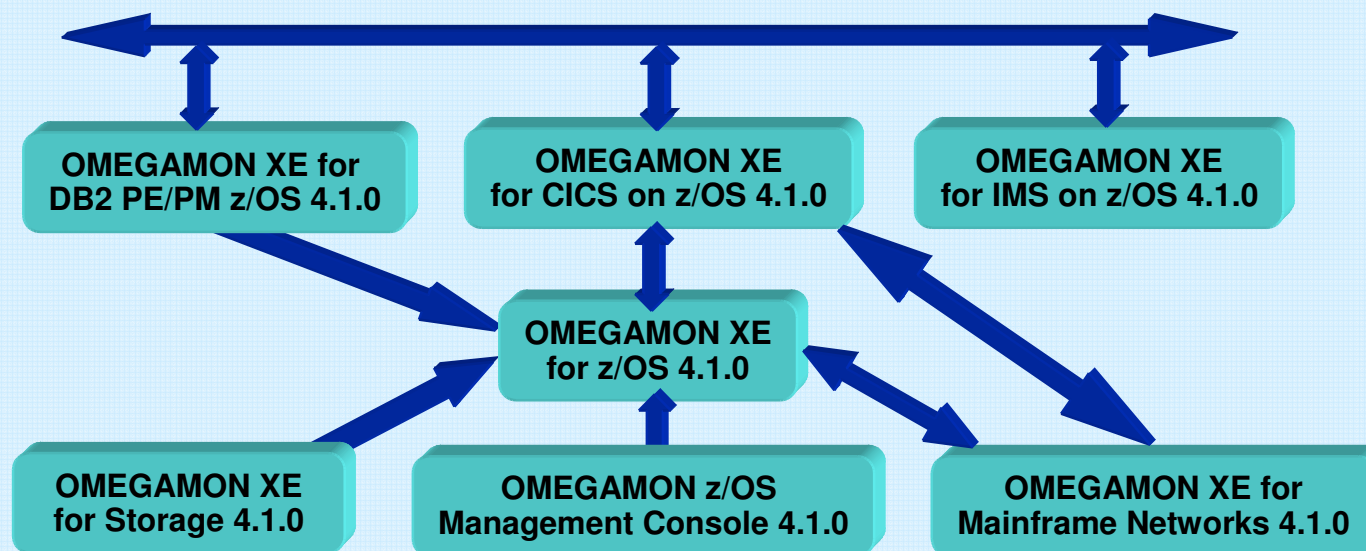
- **Extended Tivoli Data Warehouse (TDW) with support for Pruning and Aggregation**
 - Automatic deletion of data and consolidated reporting by groups, dates, etc.
- **Added IBM Support Assistant**
 - Plug-ins to improve product support
- **Added Problem Determination Guides**
 - Help customers diagnose and solve operational problems
- **Support for Agent Versioning added**
 - Multi-product version support enable incremental deployment of OMEGAMON 4.1.0 products
- **IBM Customization Assist Tool (ICAT) enhanced to simplify SMP/E and Run Time Environment (RTE) installation and deployment**

Dynamic Workspace Linking Functionality

Problem: How do I quickly find a potential problem that requires multiple monitoring products?

Scenario: Dynamically link in context from CICS transaction to the associated DB2 thread

Solution: Dynamic Workspace Linking
Product provided links & user customized



OMEGAMON XE on z/OS v4.1.0 *Highlights*

- **zIIP processor usage and reporting – also back fit in v3.1.0 (July)**
- **Basic RMF III launch, optional RMF collection for CF data**
- **Integration:**
 - Linking from OM XE DB2 PE/PM to OM XE on z/OS (enclave), DWL to OMEGAMON XEs, and z/OS Management Console (zMC)
- **Added to XE interface from CUA**
 - I/O rate by address space
 - Real Storage information
- **Tape drive situation support**
- **z/OS Exploitation**
 - Coupling Facility structure duplexing reporting
 - Plex wide zAAP support
- **Converged OM XE for USS into OM XE on z/OS**

Availability
1Q2007

zAAP / zIIP Reporting

Same changes to Address Spaces Workspace for Service Class

Address Spaces Workspace for Service Class Period

View: Physical

z/OS Systems

- LPAR400J:MVS:SYSPLEX
 - Coupling Facility Policy Data for Sysplex
 - Coupling Facility Structures Data for Sysplex
 - Coupling Facility Systems Data for Sysplex
 - Global Enqueue Data for Sysplex
 - GRS Ring Systems Data for Sysplex
 - Report Classes Data for Sysplex
 - Resource Groups Data for Sysplex
 - Service Classes Data for Sysplex
 - Service Definition Data for Sysplex
 - Shared DASD Groups Data For Sysplex
 - XCF Groups Data for Sysplex

Physical

Address Spaces for Report Class

Velocity and CPU Percent

Page: 1 of 2

Where Velocity or any Processor% greater than 0

Page and I/Os per Second

Page: 1 of 2

Central and Expanded S...

Page: 1 of 2

Address Space	System Name	ASID	Service Class	Velocity	Page Rate	CSTOR Frames	ESTOR Frames	I/O Rate	CPU Percent	IFA Percent	IFA On CP Percent	zIIP Percent	zIIP On CP Percent
\$AFOP22	SP22	0X0017	STCPROD	0.0	0.0	323	0	0.0	0.0	0.0	0.0	0.0	0.0
\$DFHSM22	SP22	0X007C	STCPROD	0.0	0.0	1610	0	0.0	0.0	0.0	0.0	0.0	0.0
\$NETVSS2	SP22	0X0088	STCPROD	0.0	0.0	72	0	0.0	0.0	0.0	0.0	0.0	0.0
\$PORT22	SP22	0X0085	STCPROD	0.0	0.0	1351	0	0.0	0.0	0.0	0.0	0.0	0.0
\$2NSDF	SP22	0X00E7	STCPROD	0.0	0.0	328	0	0.0	0.0	0.0	0.0	0.0	0.0

For report class REPORTA on LPAR400J

Hub Time: Wed, 07/26/2006 0: Server Available | Address Space Workspace for Report Class - IBM-8C5C012723D - SYSADMIN *ADMIN MODE*

OMEGAMON XE for CICS on z/OS v4.1.0 *Highlights*

- **Enhanced CICS TS Support**
 - URIMAP summary, global counts and details for CICS web clients
 - Web Service analysis reports for Web Service Details, Virtual Host Detail, Pipeline Detail, Document Template Detail
 - Business Transaction Services (BTS) support for long running processes
 - Recovery Manager reporting for application performance tuning
 - Enqueue pool details for recovery
 - Enterprise Java analysis reporting
- **Dynamic Workspace Linking**
 - CICS Transaction -> DB2 Thread, CICS Transaction Analysis data,
 - DB2 Thread Exception Detail reports
- **CUA Migration to XE – Service Level Analysis (SLA) and Application Trace Facility (ATF)**
- **Integration with CICS PA**

**Availability
4Q2006**

OMEGAMON XE for IMS on z/OS v4.10 *Highlights*

- **TRF reporting improvements**

- Increased precision expanding transactions to the millisecond

Availability
4Q2006

- **DL/I call reporting for full function and Fast Path WFI regions**

- Accumulation of all call types issued by an application during transaction processing

- **HALDB support**

- DB summaries, partition details, VSAM / OSAM statistics

- **DBCTL detailed thread reporting for monitoring activity**

- Allows detection and prevention of application bottlenecks and response time problems.

- **Enhanced IMS Connect reporting**

- Provides summary of transaction performance, details about every transaction processed and auto-discovery of IMS Connect tasks

- **Product provided Dynamic Workspace Links (DWL) to OMEGAMON DB2 and CICS**

OMEGAMON XE for DB2 PM/PE on z/OS v4.1.0

Highlights

- **Support for zIIP processor usage**
- **New DB2 Top Ten Volume reports for the System z9 platform**
- **DB2 version 9 day one support**
- **Enhanced Thread Overview**
 - Show additional LOCK information and Changed Pages in all Group Buffer Pools
- **DWL for enclave to OMEGAMON XE on z/OS, OMEGAMON XE for CICS on z/OS and OMEGAMON XE for IMS on z/OS.**

**Availability
4Q2006**

OMEGAMON XE for Storage on z/OS v4.10 *Highlights*

**Availability
4Q2006**

- **New storage toolkit for DFHSM and DFDSS functions**
 - Database administrators can quickly and easily create commands or schedule actions to maintain and administer DASD storage via the TEP
- **Top ten volume reports**
- **New dataset attribute database**
 - Granular and versatile reporting capabilities at the dataset level that can be administered via the new storage toolkit function
- **New problem solving workspaces adding to your problem determination capabilities**
 - Intelligent situation analysis
- **Integration:**
 - DWL to other OMEGAMON XE on z/OS
 - Launch of Total Productivity Center (TPC)

OMEGAMON XE for Mainframe Networks on z/OS v4.1.0

Highlights

Availability
4Q2006

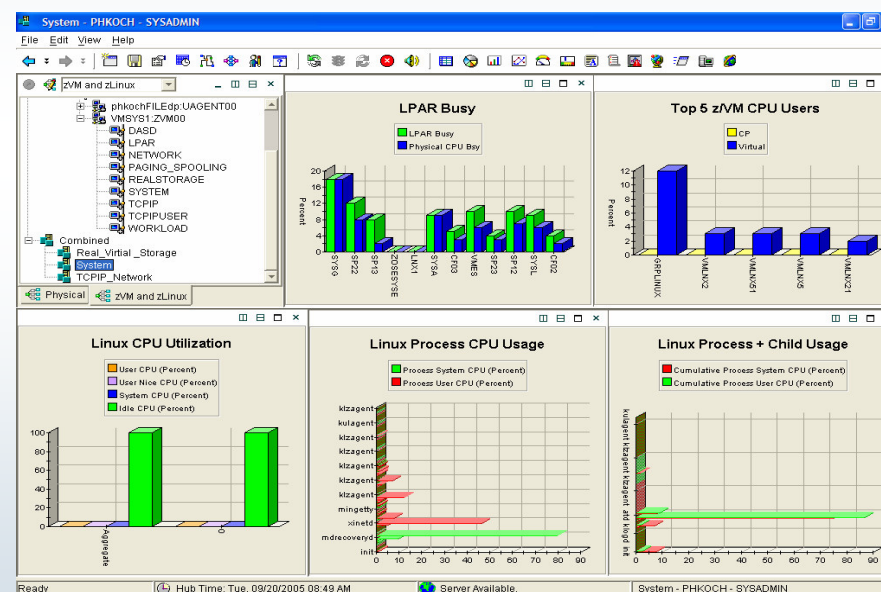
- **New performance reports**
 - VTAM buffer pool and address space workspaces
- **Enhanced FTP records**
 - Provided by the z/OS Communications Server Network Management Interface resulting in performance improvement
- **TN3270 server session workspaces provide performance and availability metrics for systems running z/OS version 1.8**
- **Advanced historical reporting**
 - Available using both new Tivoli Enterprise Portal workspaces and SQL queries against the Tivoli Data Warehouse database
 - DBCTL detailed thread reporting for monitoring activity allowing the detection and prevention of application bottlenecks and response time problems
- **Enhancements to Enterprise Extender (EE) reporting and High Performance Router (HPR) connections**
- **DWL to OMEGAMON XE on z/OS and NetView on z/OS for extended integration**

OMEGAMON XE for z/VM and Linux v4.1.0

- **Combined offering to monitors z/VM and Linux on System z**
- **Provides workspaces that display**
 - Overall System Health
 - Workload metrics for logged-in users
 - Individual device metrics
 - LPAR Data
- **Composite views of Linux on z running on VM**
- **Integrated with the VM Performance Toolkit**

**Availability
1Q2007**

New!



Modernizing the “Face” of z/OS

The way it's been

```

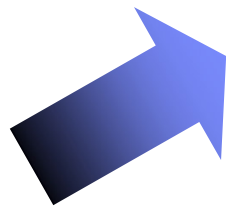
Menu Utilities Compilers Options Status Help
-----
ISPF Primary Option Menu          Enter option

Option ==>

0 Settings      Terminal and user parameters      User ID . : SCOHST0
1 View         Display source data or listings     Time . . : 11:31
2 Edit         Create or change source data        Terminal. : 0270
3 Utilities    Perform utility functions           Screen . : 1
4 Foreground   Interactive language processing     Language. : ENGLISH
5 Batch        Submit job for language processing   Appl ID . : ISR
6 Command      Enter TSO or Workstation commands   TSO logon : CTF
7 Dialog Test  Perform dialog testing              TSO prefix: SCOHST0
8 LH Facility  Library administrator functions     System ID : BC10
9 IBM Products IBM program development products WVS acct. : TECH10H0
10 SCLM       SW Configuration Library Manager    Release . : ISPF 4.8
11 Workplace   ISPF Object/Action Workplace

-v net,inact,id=cuu021
I310971 WARY ACCEPTED
I311051 CUU021 MODE NOW INACTIVE
-v net,act,id=cuu021
I310971 WARY ACCEPTED
I310981 CUU021 ACTIVE
$HASP100 WOLFG ON TSOINDR
-$HASP373 WOLFG STARTED
-$HASP395 WOLFG ENDED
-$HASP150 WOLFG ON PRINTER1 5 LINES
-IEC223I IF002000, MSTR7CL, YES2, UNKNOWN
I31384I UTM CLOSE IN PROCESS FOR TS00001 OPENED BY UNKNOWN UNKNOWN
$HASP100 PRINTER1 INACTIVE - CLASS=AJ
$HASP250 WOLFG IS PURGED
I31400I TERMINATION IN PROGRESS FOR APPLID TS00001
I31384I UTM CLOSE COMPLETE FOR TS00001
IEF4001 FAILED - CODE S000 - IN ADDRESS SPACE 0000
$HASP100 WOLFG ON TSOINDR
-$HASP373 WOLFG STARTED

IEE152I ENTER CANCEL D C,X
-
IEE163I MODE= RO
    
```



The way it can be

Sysplex Name	MVSID	Check Owner	Check Name	Check Status	Enabled	Active	Global	More Than One Msg	Exit Routine
LPAR400J	SYS	IBMPCF	CDS_Dataset_Separation	Exception_High	Yes	Yes	No	Yes	IBMSECR
LPAR400J	SYS	IBMUSS	USS_FILESYS_CONFIG	Exception_High	Yes	Yes	No	Yes	IBMSECR
LPAR400J	SYS	IBMFRACF	FRACF_SENSITIVE_RESOURCES	Exception_High	Yes	Yes	No	Yes	IBMSECR
LPAR400J	SYS	IBMUSS	USS_AUTOMOUNT_DELAY	Exception_Low	Yes	Yes	No	Yes	IBMSECR
LPAR400J	SYS	IBMUSS	USS_MAXSOCKETS_MAXFILEPROC	Exception_Low	Yes	Yes	No	Yes	IBMSECR
LPAR400J	SYS	IBMFRSM	RSM_REAL	Exception_Low	Yes	Yes	No	Yes	IBMSECR
LPAR400J	SYS	IBMCCN2	CN2_Systems_Routode	Exception_Low	Yes	Yes	No	Yes	IBMSECR
LPAR400J	SYS	IBMCCN2	CN2_Console_Routode_11	Exception_Low	Yes	Yes	No	Yes	IBMSECR
LPAR400J	SYS	IBMCCN2	CN2_AMRF_Eventual_Action_Msgs	Exception_Low	Yes	Yes	No	Yes	IBMSECR
LPAR400J	SYS	IBMCCN2	CN2_Console_Mscope_And_Routode	Emv_N/A	Yes	Yes	No	Yes	IBMSECR
LPAR400J	SYS	IBMCCN2	CN2_EMCS_Hardcopy_Mscope	Emv_N/A	Yes	Yes	No	Yes	IBMSECR
LPAR400J	SYS	IBMGRS	GRS_CONVERT_RESERVEES	Emv_N/A	Yes	Yes	No	Yes	IBMSECR
LPAR400J	SYS	IBMCCN2	CN2_Systems_Merms	Emv_N/A	Yes	Yes	No	Yes	IBMSECR

Expert-friendly, long learning curve for people new to platform

- Multiple UIs – no central system management portal
- Many interfaces not known to those new to System z
- Manual tasks requiring extensive documentation

- ✓ **Central** z/OS management portal
- ✓ **Simplified, automated** task-oriented mgmt interface, with integrated user assistance
- ✓ **Modern** look & feel; more familiar to those new to platform
- ✓ Focus on **customer goals**
- ✓ **Optional** for those who prefer traditional interfaces

Simplifying z/OS Operations Using OMEGAMON and Tivoli Enterprise Portal Technology - *New management console*

Value

- Simplify z/OS management for the new generation of IT professionals
- Automating, eliminating, and streamlining tasks
- Easily upgradeable to full OMEGAMON solutions

Capabilities

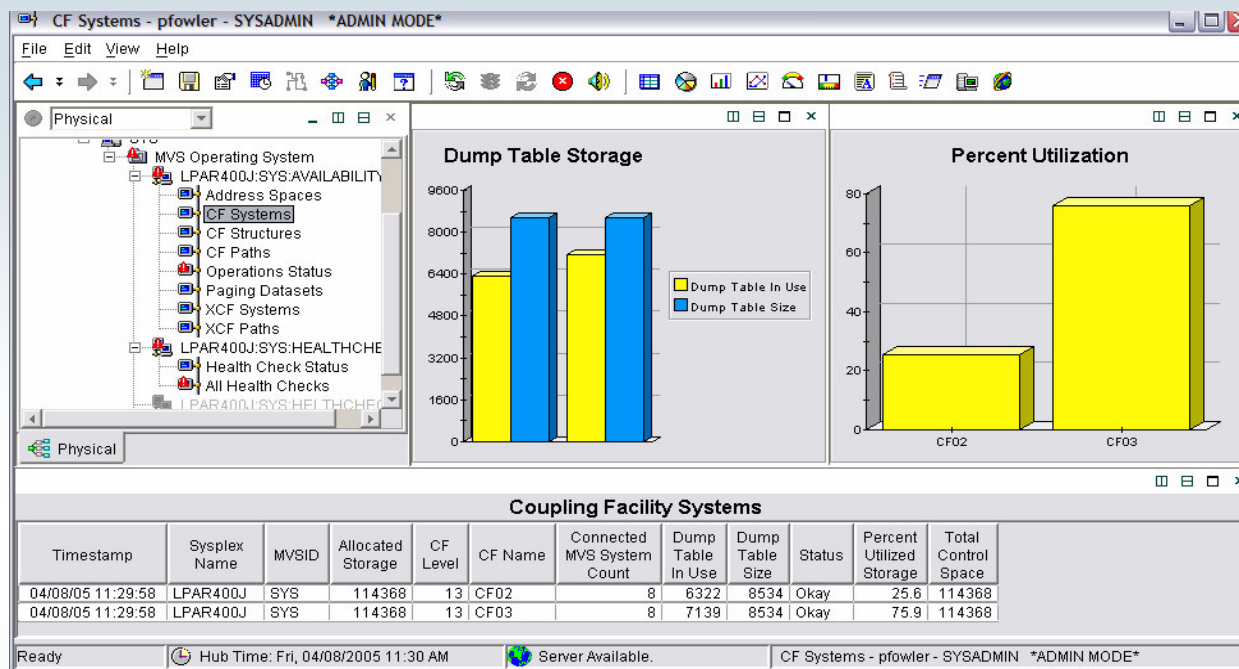
- Task oriented approach with GUI front end
- z/OS Health Checker data plus Tivoli Enterprise Portal base capabilities
 - Situations
 - Expert Advice & Take Action
- Configuration status metrics for z/OS resources displayed using Tivoli Enterprise Portal
 - Improved ease-of-use of z/OS management
 - Value-add upgrades to comprehensive Tivoli Monitoring Services products



• **Available for no charge to z/OS customers**

• **z/OS 1.4 and higher**

IBM OMEGAMON z/OS Management Console



- Eliminates having to remember complex DISPLAY commands
- Visualizes status of sysplex resources and Health Checks
- Shipped 1.1.0 December 2005
- Shipped 1.1.1 with ITM V6 support March 2006

OMEGAMON zMC : Configuration Health Checks

All Health Checks - pfowler - SYSADMIN *ADMIN MODE*

File Edit View Help

Physical

- Paging Datasets
- XCF Systems
- XCF Paths
- LPAR400J:SYS:HEALTHCHE
 - Health Check Status
 - All Health Checks
- LPAR400J:SYS:HEALTHCHE
- LPAR400J:SYS:MVSSYS

Physical

Counts of Check States

	Sysplex Name	MVSID	Check Owner	Check Name	Check Status	Enabled	Active	Global	More Than One Msg	Exit Routine
	LPAR400J	SYS	IBMXCF	CDS_Dataset_Separation	Exception_High	Yes	Yes	No	Yes	IBMSECT
	LPAR400J	SYS	IBMUSS	USS_FILESYS_CONFIG	Exception_High	Yes	Yes	No	Yes	IBMSECT
	LPAR400J	SYS	IBMRACF	RACF_SENSITIVE_RESOURCES	Exception_High	Yes	Yes	No	Yes	IBMSECT
	LPAR400J	SYS	IBMUSS	USS_AUTOMOUNT_DELAY	Exception_Low	Yes	Yes	No	Yes	IBMSECT
	LPAR400J	SYS	IBMUSS	USS_MAXSOCKETS_MAXFILEPROC	Exception_Low	Yes	Yes	No	Yes	IBMSECT
	LPAR400J	SYS	IBMRSM	RSM_REAL	Exception_Low	Yes	Yes	No	Yes	IBMSECT
	LPAR400J	SYS	IBMCNZ	CNZ_Syscons_Routcode	Exception_Low	Yes	Yes	No	Yes	IBMSECT
	LPAR400J	SYS	IBMCNZ	CNZ_Console_Routcode_11	Exception_Low	Yes	Yes	No	Yes	IBMSECT
	LPAR400J	SYS	IBMCNZ	CNZ_AMRF_Eventual_Action_Msgs	Exception_Low	Yes	Yes	No	Yes	IBMSECT
	LPAR400J	SYS	IBMCNZ	CNZ_Console_Mscope_And_Routcode	Env_N/A	Yes	Yes	No	Yes	IBMSECT
	LPAR400J	SYS	IBMCNZ	CNZ_EMCS_Hardcopy_Mscope	Env_N/A	Yes	Yes	No	Yes	IBMSECT
	LPAR400J	SYS	IBMGRS	GRS_CONVERT_RESERVES	Env_N/A	Yes	Yes	No	Yes	IBMSECT
	LPAR400J	SYS	IBMCNZ	CNZ_Syscons_Mscope	Env_N/A	Yes	Yes	No	Yes	IBMSECT

Ready | Hub Time: Fri, 04/08/2005 09:52 AM | Server Available. | All Health Checks - pfowler - SYSADMIN *ADMIN MODE*

IBM OMEGAMON z/OS Management Console v4.10

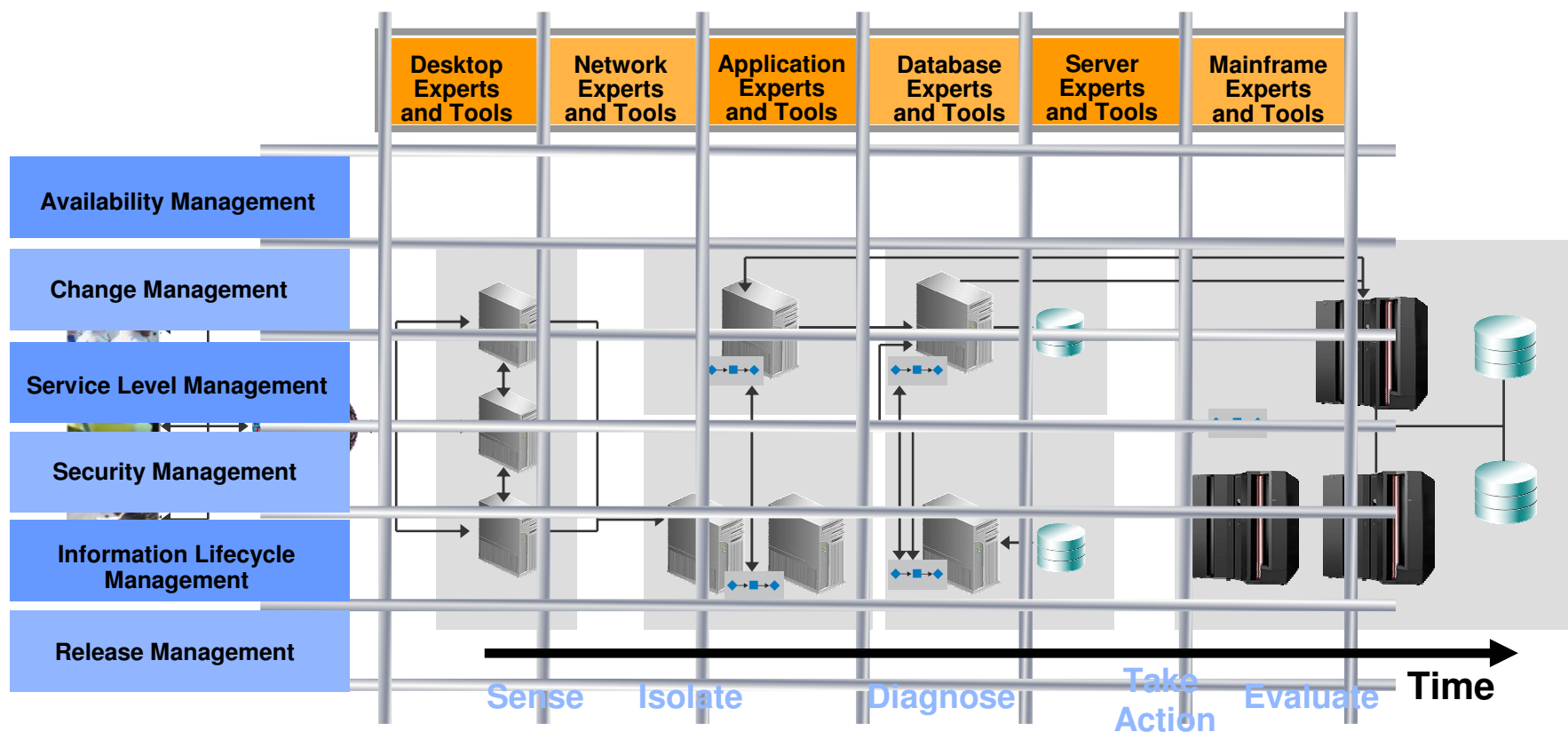
Highlights

**Availability
1Q2007**

- **Coupling Facility status details**
- **Coupling Facility Resource Manager (CFRM) status for contention issues**
- **LPAR Cluster status details**
- **Unix System Services data and processes reports**
- **DWL to OMEGAMON XE on z/OS for better integration and problem determination**

Summary

- **Operation Management Products for end-to-end management**
- **Aligned with IT Service Management – CCMDB and Process Managers**
- **Delivering comprehensive solutions that address key IT challenges**



Disclaimers and Trademarks

No part of this document may be reproduced or transmitted in any form without written permission from IBM Corporation.

Product data has been reviewed for accuracy as of the date of initial publication. Product data is subject to change without notice. Any statements regarding IBM's future direction and intent are subject to change or withdrawal without notice, and represent goals and objectives only.

THE INFORMATION PROVIDED IN THIS DOCUMENT IS DISTRIBUTED "AS IS" WITHOUT ANY WARRANTY, EITHER EXPRESS OR IMPLIED. IBM EXPRESSLY DISCLAIMS ANY WARRANTIES OF MERCHANTABILITY, FITNESS FOR A PARTICULAR PURPOSE OR NON-INFRINGEMENT. IBM products are warranted according to the terms and conditions of the agreements (e.g. IBM Customer Agreement, Statement of Limited Warranty, International Program License Agreement, etc.) under which they are provided.

IBM customers are responsible for ensuring their own compliance with legal requirements. It is the customer's sole responsibility to obtain advice of competent legal counsel as to the identification and interpretation of any relevant laws and regulatory requirements that may affect the customer's business and any actions the customer may need to take to comply with such laws.

The following terms are trademarks or registered trademarks of the IBM Corporation in either the United States, other countries or both: DB2, e-business logo, eServer, IBM, IBM eServer, IBM logo, Lotus, Tivoli, WebSphere, Rational, z/OS, zSeries, System z.

Java and all Java-based trademarks are trademarks of Sun Microsystems, Inc. in the United States and/or other countries.

Microsoft, Windows, Windows NT, and the Windows logo are trademarks of Microsoft Corporation in the United States and/or other countries.

UNIX is a registered trademark of The Open Group in the United States and other countries.

Linux is a trademark of Linus Torvalds in the United States and other countries.

Other company, product, or service names may be trademarks or service marks of others.

ITIL® is a Registered Trade Mark, and a Registered Community Trade Mark of the Office of Government Commerce, and is Registered in the U.S. Patent and Trademark Office.

IT Infrastructure Library® is a Registered Trademark of the Central Computer and Telecommunications Agency which is now part of the Office of Government Commerce.