

IBM Lotus Domino Designer 6.5.1

Highlights

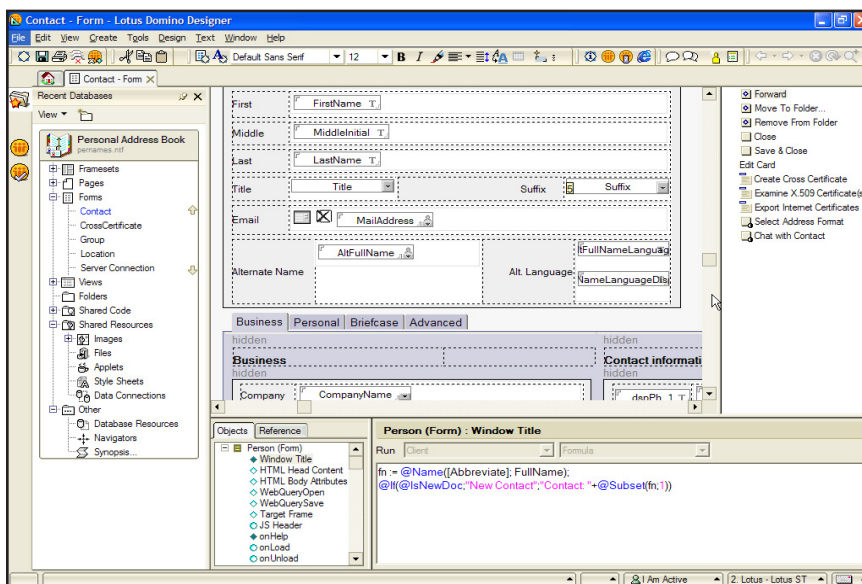
- Lets you rapidly build, test and deploy open, security-rich, mission-critical business applications
- Quickly add instant messaging, awareness, and chat contact lists to Notes applications with a few simple clicks of the mouse
- Provides platform flexibility with open-standard Web services, XML and Java technology
- Using Domino Toolkit for WebSphere Studio, developers can start building JSP pages simply by dragging and dropping existing Domino design elements, like forms, views and agents
- Provides Java or CORBA and COM classes so you can leverage existing language skills to develop applications

Quickly build applications and automate workflows to respond to business needs

Constant advances in technology and increasingly fierce competition are forcing companies to provide higher-quality services and products. And to deliver them more quickly than ever before. To meet today's formidable business demands, you need to find ways to make your business processes more efficient, more automated and easier to follow. All with less time and effort —without breaking your budget. IBM Lotus® Domino Designer® 6.5.1 software allows you to rapidly build any IBM Lotus Notes® and IBM Lotus Domino® collaborative application you need to increase developer productivity and maximize organizational efficiencies—all while helping to reduce your total cost of ownership.

The IBM Domino 6.5.1 Family— an integrated product release

With release 6.5.1, Lotus is delivering all products in the Domino software-based collaboration family on a common set of operating systems, languages and supported browsers. This enables customers to quickly and easily build applications using Domino Designer 6.5.1, knowing that they will run seamlessly with the other products in the 6.5.1 family.



The user interface of IBM Lotus Domino Designer allows developers to rapidly create collaborative applications.

With Lotus Domino Designer 6.5.1 software, you can easily and quickly create security-rich, flexible Lotus Notes and Web-enabled applications. Applications that can improve efficiency and accuracy by helping minimize human error, streamline business processes and offer robust functionality with offline capabilities.

Lotus Domino Designer 6.5.1 software makes it easy to develop and test applications that can be deployed across multiple platforms. It offers multilingual support and provides more flexibility when building and managing your applications. The combination of faster business processes, fewer errors and more efficient tracking of business-critical projects enabled by Lotus Domino Designer 6.5.1 software can enhance customer relationships.

Expand operational efficiencies. Help increase potential return on investment. And help lower your total cost of ownership. So you can rapidly create virtually any application you need to respond to an ever-changing business environment, while adding business value for your customers and your organization.

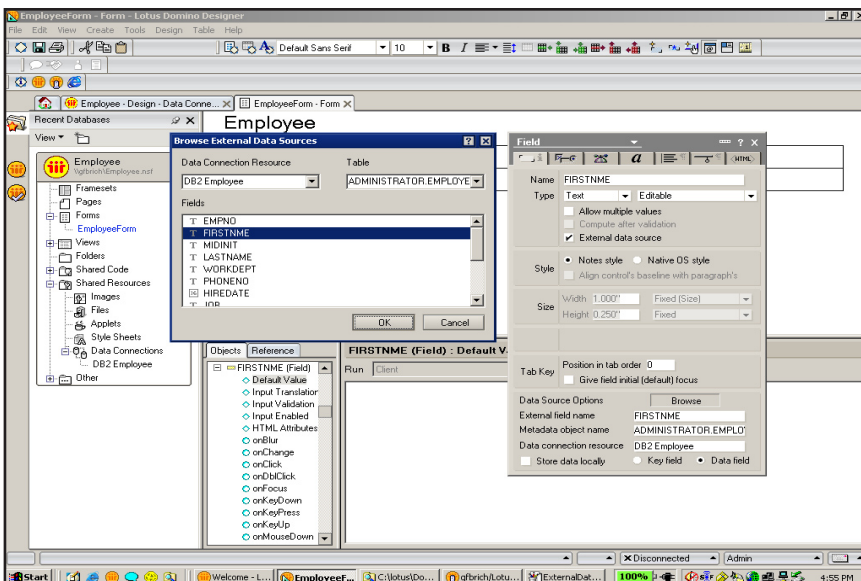
Create applications quickly to keep end users productive

Developing business-process applications can be time-consuming. But Lotus Domino Designer 6.5.1 software lets you build applications more easily than ever before so you can get your applications up and running fast. Using industry standards, the open development environment of Lotus Domino Designer 6.5.1 software lets you take advantage of IBM Lotus Domino server, a distributed multiapplication server that natively

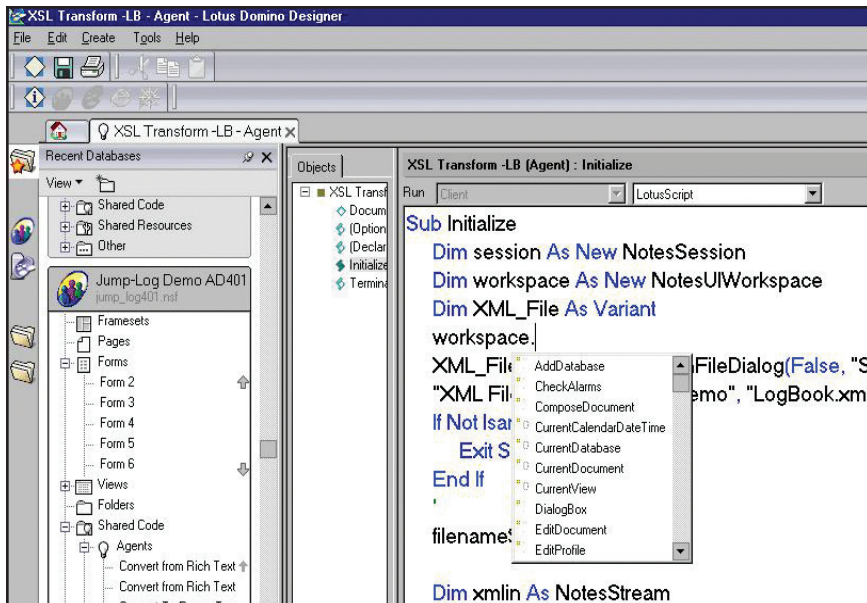
offers multiple services like messaging, calendar, directory, replication, security features, workflow and Web capabilities. You can quickly connect these services to fit the needs of your dynamic business—without having to create your applications from the ground up.

Lotus Domino Designer 6.5.1 software incorporates features that make it easy for you to build and maintain Lotus Domino applications as they grow and become more sophisticated. These features include JavaScript libraries, document locking, more flexible agent security and remote debugging, XML tools and rich-text tools. And the improved ability of Lotus Notes client to render HTML allows you to write HTML that runs both on Lotus Notes client and in a Web browser without having to create separate presentations for each client—saving you time.

Using data connection resources (DCRs), Lotus Domino Designer 6.5.1 software lets you leverage your corporate data systems to enhance applications used by your employees, customers and trading partners in conjunction with your business processes. DCRs integrate the technology of Lotus Domino enterprise connection services as part of Lotus Domino Designer 6.5.1 software so you can



You can use Lotus Domino enterprise connection services and DCRs to map a field in a Lotus Domino form to a column in a IBM DB2® table.



Lotus Domino Designer 6.5.1 software offers new database navigation and automatic completion of LotusScript code.

easily define a connection to an external data source, like a relational database. Then you can use the connection to link the fields in a form to fields in the external source so you don't have to duplicate data. DCRs are reusable in an application and can be shared across applications to save time and effort when developing new Lotus Domino applications. You can use DCR technology to quickly and easily access data in enterprise systems and then take advantage of a Lotus Domino application to replicate, share, secure and manage the data.

Build and manage applications with ease

With Lotus Domino Designer 6.5.1 software, you can manage complex applications and development teams more easily than ever before. Lotus Domino Designer 6.5.1 software has a comprehensive, open development environment, so you can build and deploy applications on existing platforms while using industry-standard programming skills, such as LotusScript (BASIC), Java™ Runtime Environment (JRE), Version 1.3; JavaScript language, Version 1.4; HTML; XML; C application program interfaces (APIs); CORBA;

component object model (COM) and object-oriented programming. Lotus Domino Designer 6.5.1 software also enables you to create collaborative applications for mobile devices that can run on wireless application protocol-enabled devices, short message service devices and personal digital assistants. This capability lets you build what you need to meet business demands, while end users have the flexibility to stay productive—even on the go.

Take advantage of the flexibility of Lotus Domino and Lotus Notes software

Lotus Domino Designer 6.5.1 is built on industry standards like JRE, Version 1.3; JavaScript language, Version 1.4; HTML; LotusScript (BASIC); XML (DOM Parser, Version 1.6); Simple API for XML (SAX Parser, Version 1.6); Extensible Stylesheet Language Transformer; cascading stylesheets and layers. So Web designers and Lotus Notes developers can take advantage of their existing skills to create multiplatform applications on Linux, Microsoft® Windows® 95, Windows 98, Windows 2000, Windows XP, Windows NT®, Version 4.0 and IBM AIX® platforms. And leveraging existing skills and industry standards can help save time and money.

Building business-critical applications, from basic to more complex, is even easier with Lotus Domino Designer 6.5.1 features and functions.

IBM Lotus Domino Designer 6.5.1 new and improved features

Feature	Function	Benefit
Compatibility	Allows applications to work with previous releases of Lotus Notes software, Lotus Domino server and Lotus Domino Designer software.	Leverage existing Lotus investments to reduce your total cost of ownership.
Industry-standard XML tools	Processes any XML code using LotusScript (BASIC) and Java technology on all the platforms a Lotus Domino server runs on.	Take advantage of document-handling features—like processing, managing and replicating information—native to Lotus Domino server.
Native XML utilities	Provides the ability to convert, import and export Lotus Notes databases, including design elements, from or to XML. The XML document, representing a Lotus Notes database, can be altered and reimported to your specifications using any standard XML tool.	Indirectly create—in whole or in part—a Lotus Notes database, to be processed by any XML tool, when you create an XML document. And you can use XML documents, created by any means, to create Lotus Notes documents, design elements and databases.
Application customization	Enables users to customize applications to their specifications without needing developers to make changes.	Free time to focus on building and managing mission-critical applications while end users can make the changes they need to stay productive.
Templates	Provides sample applications that can be used as is or customized.	Help save development time and provide technical resources. (like code, forms, data and user-interface designs) to be copied into custom applications using templates.
Remote debugger	Provides the capability to debug an agent on a remote server as if it were based on a local machine. Agents are created and tested in Lotus Domino Designer software locally and then deployed to a remote server.	Identify and correct remote-agent problems, using the remote debugger, if the agent experiences environmental roadblocks.
Automated distributed application deployment	Allows applications and updates to be created with Lotus Domino 6.5.1 software to be deployed to multiple platforms automatically through replication.	Save time by eliminating the manual effort of copying and installing files on end-user machines. And end users can continue to be productive—without interruption.
Fully integrated instant messaging	Enables easy embedding of instant messaging, your contact list and awareness into Lotus Domino applications and to a column in a view by checking a box. No programming is required.	Rapidly and easily integrate people throughout your organization to increase end-user productivity.
Lotus Domino Toolkit for WebSphere Studio plug-in	Offers easy connection, using IBM WebSphere Studio software, to Lotus Domino and works with Lotus Domino data. You have the capability to access more Lotus Domino custom JSP tags, which are displayed in the WebSphere Studio view. And it allows you to use tags to develop portlets for use within the IBM Lotus Workplace platform and IBM WebSphere Portal software.	Shorten application development time by easily dragging and dropping Lotus Domino application forms, views and agents onto a JSP page within the WebSphere Studio environment. Displaying more custom JSP tags in the WebSphere Studio view simplifies and speeds application development. And the ability to develop portlets for the Lotus Workplace platform and WebSphere Portal software lets you use WebSphere Studio software and the toolkit to rapidly build, test and deploy portlets to WebSphere Portal.
Java or CORBA and COM classes	Provides developers with a consistent programming model across all supported development languages.	Access more language options when developing applications, and build more functional Java or CORBA and COM applications that integrate with J2EE and Microsoft .NET applications.

Lotus Domino Web services

With Lotus Domino Designer 6.5.1 software, you can add a standard Web service interface to existing Lotus Domino features (giving you the ability to provide application-to-application communication through HTTP). And you can develop applications that both host and consume Web services, so you can speed time to value when you integrate Lotus Domino Designer with or connect to external applications.

Lotus Domino applications can receive and process Web service requests, invoke business logic stored in the Lotus Domino application and respond to the client request. For example, you can develop a Lotus Domino application as a service requestor — consumer of a Web service — that can be hosted on an IBM WebSphere® Java 2 Platform, Enterprise Edition (J2EE) or Microsoft .NET platform. And you can write Web service applications in Lotus Domino server in either LotusScript or Java programming language. This exposure of existing applications to open standards increases flexibility, enabling you to integrate with WebSphere software from IBM, the Microsoft .NET framework and other Web service-enabled products.

Lotus Domino Web services also have built-in security features, a directory, cross-platform support, messaging, LotusScript (BASIC) language and other components that accompany a mature application server. So you can leverage your current Lotus Domino investment while exposing your Lotus Domino applications to Web services.

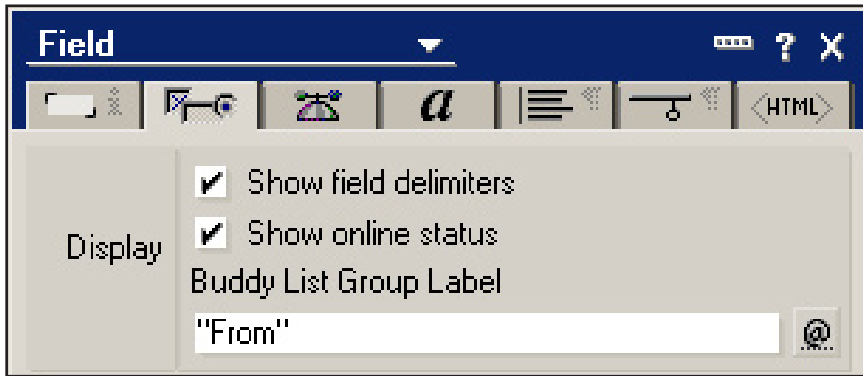
Lotus Domino Toolkit for WebSphere Studio plug-in

Using the Lotus Domino Toolkit for WebSphere Studio plug-in shortens application development time by generating basic JavaServer Pages (JSP) Web pages of existing Lotus Notes and Lotus Domino forms and views. The toolkit lets you use JSP tags, included in Lotus Domino 6.5.1 server, to drag and drop Lotus Domino forms, views and agents within the WebSphere Studio environment. So you can build applications more easily than before. And it provides access to more custom JSP tags in the WebSphere Studio view, letting you use your existing skills to develop J2EE applications with richer functionality. Then you can quickly and cost-effectively integrate the JSP Web pages into portlets for WebSphere Portal software with little or no programming. You can also reuse the forms, views and agents in a new JSP Web page or in existing transactional applications to get a head start on building J2EE applications.

Lotus Domino server working with Java technology

With Lotus Domino Designer 6.5.1 software, you can use a LotusScript to Java tool to connect LotusScript code to Java code. The tool, included in Lotus Domino server, lets you leverage the Java programming language without having to learn it — allowing quicker development. And it's implemented by a LotusScript extension, so no time-consuming installation or configuration is required.

This extension allows Lotus Domino developers to invoke Java programs, pass parameters and receive results from Java programs using the LotusScript language. You can use the extension in virtually any existing LotusScript implementation, as a standalone extension or embedded in another application, including IBM Lotus Enterprise Script Builder software, IBM Lotus SmartSuite® software or Lotus Notes software. These applications support LotusScript, so you can leverage your current investment and skills to enhance your applications with Java functions.



Easily build online awareness into your Lotus Domino applications by selecting the Show online status box.

Lotus Domino server working with Microsoft products

Lotus Domino Designer 6.5.1 software also leverages the Lotus Notes and Lotus Domino 6.5.1 COM interface, so Windows developers can use Lotus Domino functionality from an external application. For example, you can enable a Microsoft Excel spreadsheet to access a Lotus Domino directory, read a calendar, copy Lotus Notes data or even send e-mail. Conversely, LotusScript (BASIC) programmers in Lotus Domino server can access functionality in other Windows applications. For example, you can create a Microsoft Word document or copy Lotus Notes data to an Excel spreadsheet—like you can do in the Microsoft Office suite using Microsoft Visual BASIC for Applications (VBA) technology. This lets you leverage your current Microsoft investments while extending their functionality to meet your needs.

Make your move to Lotus Domino Designer 6.5.1 software

Enabling your staff to rapidly build mission-critical applications that can be deployed across multiple platforms and help automate your company's business can increase workflow efficiencies. Help save time and money. And enhance customer relationships. With Lotus Domino Designer 6.5.1 software, you also get the flexibility of Lotus Domino server and Lotus Notes messaging software. Use Lotus Domino Designer 6.5.1 software to take advantage of robust application development tools that let you build virtually any collaborative application you need to run your business more productively.

Leading-edge services and solutions—whenever and wherever you need them

Choosing Lotus software from IBM means you have access to the vast resources available through the global team at IBM Software Services for Lotus and its network of qualified Business Partners. To help you quickly maximize the capabilities of and speed return on your Lotus software investments. Through expert consultation, in-depth understanding of Lotus technologies, custom application development, real-world experience and knowledge transfer, IBM Software Services for Lotus and its network of qualified Business Partners can help you turn your IT investments into quantifiable business value. To learn more, visit:

ibm.com/lotus/services
or
ibm.com/lotus/partners

For more information

To learn more about IBM Lotus Domino Designer 6.5.1 software, visit:

ibm.com/lotus/dominodesigner

IBM Lotus Domino Designer 6.5.1 at a glance

Supported platforms

- Microsoft Windows 98
 - Microsoft Windows NT, Version 4.0
 - Microsoft Windows 2000 Professional
 - Microsoft Windows XP Professional
-

Hardware requirements

For Windows 98

- Minimum of 64MB RAM (128MB recommended)

For Windows NT

- Minimum of 64MB RAM (128MB recommended)

For Windows 2000 and Windows XP

- Minimum of 128MB RAM (256MB recommended)
-

Software requirements

- IBM Lotus Notes 6.5.1 client
 - IBM Lotus Domino 6.5.1 server
 - IBM WebSphere Studio, Version 5.x (required for Lotus Domino Toolkit for WebSphere Studio plug-in)
-



© Copyright IBM Corporation 2004

Lotus Software
IBM Software Group
One Rogers Street
Cambridge, MA 02142
U.S.A.

Produced in the United States of America
04-04
All Rights Reserved

AIX, DB2, Domino, Domino Designer, the e(logo) business on demand lockup, IBM, the IBM logo, Lotus, Lotus Notes, SmartSuite and WebSphere are trademarks of International Business Machines Corporation in the United States, other countries or both.

Microsoft, Windows and Windows NT are trademarks of Microsoft Corporation in the United States, other countries or both.

Java and all Java-based trademarks are trademarks of Sun Microsystems, Inc. in the United States, other countries or both.

Other company, product and service names may be trademarks or service marks of others.