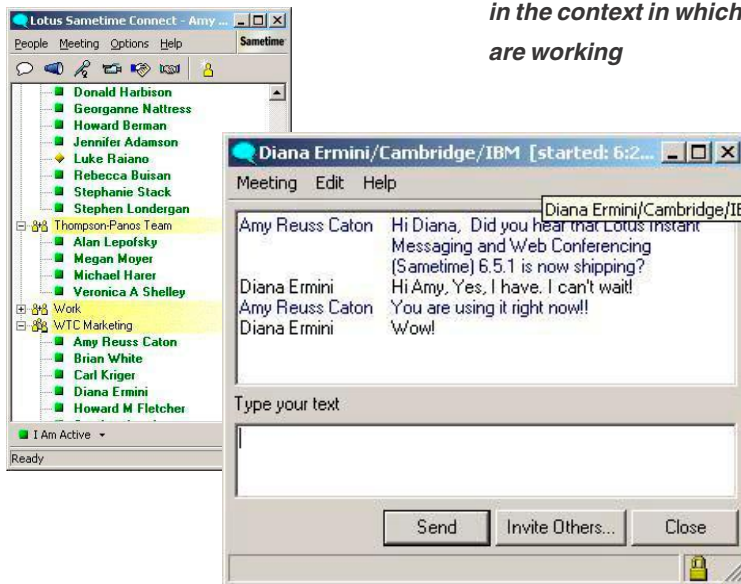


## IBM Lotus Instant Messaging and Web Conferencing 6.5.1

### Highlights

- **Optimizes collaboration and human interaction by broadening communication choices beyond phone, e-mail and in-person meetings**
- **Accelerates time to market and strengthens competitive advantage by enabling users to gain easy access to experts and information**
- **Speeds return on your investment through increased individual and team productivity and reduced travel and telecommunications expenses**
- **Extends security-rich, real-time communications to everyone in your value chain—so all team members can make informed decisions quickly**
- **Integrates with your existing infrastructure and other Web applications so users can collaborate spontaneously and in the context in which they are working**



### Secure, real-time collaboration for today's business

In today's workplace, it's all about corporate accountability and results. You must maintain integrity of information, streamline processes and reduce costs. Everyone along your value chain must be better coordinated, more informed and more responsive.

IBM Lotus® Instant Messaging and Web Conferencing (IBM Lotus Sametime®) collaboration software, built to address the demands of today's workplace, enables users to engage and respond to colleagues, customers, business partners and suppliers in real time. With Lotus Instant Messaging and Web Conferencing, users can make informed decisions on up-to-the-minute information—and can collaborate and interact securely, in the context in which they are working. These advanced collaboration capabilities are designed to build resilient business relationships with individuals, teams or entire organizations that can help position your organization for future growth.

IBM Lotus Instant Messaging and Web Conferencing allows users to see who is online and collaborate in real time.

## **Build a real-time collaborative workplace for the on demand era**

The Lotus Instant Messaging and Web Conferencing product family combines the on demand capabilities of real-time collaboration including presence awareness, instant messaging and Web conferencing. This set of offerings is designed to meet the requirements of users, administrators and developers, and includes:

- *IBM Lotus Instant Messaging and Web Conferencing server to manage the flow of instant messages, streaming audio and video, shared applications and whiteboard sessions. The Connect client, a PC-based workplace to exchange text-based messages and attachments, and schedule instant Web conferences.*
- *IBM Lotus Instant Messaging Everyplace® (IBM Lotus Sametime Everyplace) server to give mobile users presence awareness and instant messaging capabilities through Web-enabled devices, like mobile phones and personal digital assistants (PDAs). Users can see who's online, initiate a chat, and send and receive instant messages from virtually anywhere.*

Lotus Instant Messaging and Web Conferencing software also includes a comprehensive set of customization tools that makes it possible for you to tailor the application to address your organization's unique requirements. Toolkits provide application programming interfaces (APIs) so you can integrate and embed real-time collaboration capabilities into e-mail, calendars, discussion databases, document libraries and business portals, as well as a wide range of Microsoft® Windows® and Web applications.

## **Meet business demands faster with more efficient workplace communication**

To build a real-time collaborative workplace for the on demand era, you must start with a sound foundation based on three key capabilities:

- *Presence awareness*
- *Instant messaging*
- *Web conferencing*

### *Presence awareness*

Users can see which team members — and applications — are online and can monitor their status. Users can collaborate, share information and take appropriate action. Users can also control their individual online availability and visibility through robust user privacy features.

### *Instant messaging*

Users can initiate an instant messaging session involving one or many persons. This includes text-, audio- and video-based exchanges of information in real time. They can also launch an instant Web conference to share their desktops with other users.

### *Web conferencing*

Users can quickly move from application sharing to a whiteboard session to take advantage of more robust Lotus Web Conferencing functionality. They can share a document or a drawing, an application — word processor, spreadsheet or project management software — or their entire desktops. Users can even give a team member access to his or her desktop, or pass control of the Web conference to speed collaboration processes. They can also optionally integrate Web conferences with third-party audio services.

With Lotus Instant Messaging and Web Conferencing users can solve problems more quickly and efficiently. Teams in the office can schedule an interaction or collaborate spontaneously. Lotus Instant Messaging and Web Conferencing software gives virtual teams this same flexibility online. One user can give someone else access to his or her system—or pass control of a particular application to others and retrieve it as the need arises. Users can also launch meetings on the fly or schedule an event in the meeting center. They can preload and store agenda or preparation materials on the Lotus Instant Messaging and Web Conferencing server. Meeting invitees can access materials, anytime—whether it's before, during or after a scheduled meeting—significantly increasing productivity and improving operational efficiencies.

**Provide access to business-critical information anytime, anywhere**

Regardless of whether team members are in the office or on the road, they can collaborate in real time with Lotus Instant Messaging and Web Conferencing software. It provides your organization with an infrastructure that delivers enterprise-wide security, scalability and management that you can rely on.

*Ubiquity*

Use Lotus Instant Messaging and Web Conferencing as a stand-alone solution or with another application like IBM Lotus Notes®, IBM Lotus Team Workplace (IBM Lotus QuickPlace®), IBM WebSphere® Portal, Microsoft Office or any other Microsoft Windows or Web application.

*Authentication and access control*

Lotus Instant Messaging and Web Conferencing authenticates users when they log on. To increase security and privacy, users can protect Web conferences with a password and limit access only to the individuals who receive invitations.

*Instant messaging gateway*

The Lotus Instant Messaging and Web Conferencing server supports Session Initiation Protocol (SIP) for Instant Messaging and Presence Leveraging Extensions (SIMPLE) for the IBM Lotus Instant Messaging Gateway. SIMPLE permits the secure exchange of real-time information with users based on their e-mail addresses—increasing reach to your extended value chain.

*Audio integration*

You can integrate teleconferences as a meeting type available through the *Meeting Room*. To enable support for teleconferencing services, you can manually configure the audio bridge services required to connect the third-party service provider to the Lotus Instant Messaging and Web Conferencing server.

You can access these features through a separate audio adapter install program. They're delivered as part of the same software acquisition channels as Lotus Instant Messaging and Web Conferencing.\*

*Scalability*

The application-sharing function of Lotus Instant Messaging and Web Conferencing enables hundreds of people to view the same presentation or Web application or to engage in a whiteboard session. You can link multiple Lotus Instant Messaging and Web Conferencing servers to increase scalability and reduce traffic across wide area networks (WANs).

### *Security, privacy and compliance*

Lotus Instant Messaging and Web Conferencing includes a variety of features to enhance security. Users can set their instant messaging preferences to prevent or discourage interruptions. They can encrypt Web conference content and data to restrict meeting content to authorized viewers only. Users can also save instant messaging conversations to a text file to view at a later time. And you can use Lotus Instant Messaging and Web Conferencing APIs to build a server-based chat logging solution that meets your organization's regulatory and compliance guidelines.

### *Directory support*

You can use existing directories—like IBM Lotus Domino® or any Lightweight Directory Access Protocol (LDAP) directory—to control exactly who can access the Lotus Instant Messaging and Web Conferencing environment. And you can choose to create and manage each directory on the fly.

### *Proxy support and firewalls*

Putting Lotus Instant Messaging and Web Conferencing in your network's demilitarized zone (DMZ) lets external users access the server without compromising network security. HTTP tunneling on port 80 enables Lotus Instant Messaging and Web Conferencing clients with restrictive firewalls—operating in corporate networks—to connect to a Lotus Instant Messaging and Web Conferencing server over the Internet. Client-side support for proxies includes HTTP, HTTPS, SOCKS4 and SOCKS5.

### *Server management*

You can use the Lotus Instant Messaging and Web Conferencing server's browser-based interface to set up new users, administer security and access privileges, monitor activity levels, and analyze usage trends. And a leading-edge administration function makes it easy to broadcast messages with security in or across your entire network.

### **Market-leading, real-time collaboration for today's workplace**

IBM Lotus Instant Messaging and Web Conferencing is IBM's market-leading platform for real-time collaboration. More than ten million people worldwide use Lotus Instant Messaging and Web Conferencing every day to share information, make decisions faster and communicate in real time. Designed for today's workplace, Lotus Instant Messaging and Web Conferencing is a robust, security-rich, manageable offering that can help your organization to increase productivity, maximize efficiency, reduce travel budgets and respond to value chain demands. With the help of Lotus Instant Messaging and Web Conferencing, your organization will be better coordinated, more informed and more responsive.

**Leading-edge services and solutions—  
available whenever and wherever  
you need them**

Choosing Lotus software from IBM means you have access to the vast on demand resources available through the global team at IBM Software Services for Lotus (ISSL) and its network of qualified IBM Business Partners. IBM Software Services for Lotus is here to help you quickly maximize the capabilities of and speed return on your Lotus software investments. Through expert consultation, in-depth understanding of Lotus technologies, custom application development, real-world experience and knowledge transfer, IBM Software Services for Lotus and IBM Business Partners can help you turn your IT investments into quantifiable business value. To learn more, visit [ibm.com/lotus/services](http://ibm.com/lotus/services) or [ibm.com/lotus/partner](http://ibm.com/lotus/partner).

**For more information**

To learn more about IBM Lotus Instant Messaging and Web Conferencing software, visit:

[ibm.com/lotus/sametime](http://ibm.com/lotus/sametime)

---

## IBM Lotus Instant Messaging and Web Conferencing 6.5.1 at a glance

---

### Server operating system requirements

---

- IBM @server® pSeries® (IBM AIX®), Version 5.1 and Version 5.2
  - Sun Solaris, Version 8 and Version 9
  - Microsoft Windows 2000 Server, Windows 2003 or Windows Advanced Server with Service Pack 3
  - IBM @server iSeries™ ( IBM OS/400®), 5722SS1, Version 5 Release 1 or later
- 

### Hardware requirements

---

*Operating system: IBM @server pSeries (AIX), Version 5.1 and Version 5.2*

- Processor: Dual 475MHz or higher IBM PowerPC® processor recommended; Dual 375MHz PowerPC processor minimum
  - RAM: 1GB recommended; 512MB minimum
  - Disk space: 1GB available disk space recommended to allow space for meetings; 500MB minimum
  - Disk swap space: 1GB RAM recommended; 512MB minimum
- 

*Operating system: Sun Solaris, Version 8 and Version 9*

- Processor: UltraSPARC III 1GHz processor or higher recommended; UltraSPARC III 550MHz processor minimum
  - RAM: 1GB recommended; 512MB minimum
  - Disk space: 1GB available disk space recommended to allow space for meetings; 500MB minimum
  - Disk swap space: 1GB recommended; 512MB minimum
- 

*Operating system: Microsoft Windows 2000 Server, Windows 2003 Server or Windows Advanced Server with Service Pack 3*

- Processor: Intel® Pentium® II 400MHz or higher recommended
  - RAM: 1GB recommended; 512MB minimum
  - Disk space: 1GB available disk space recommended to allow space for meetings; 500MB minimum
  - Disk swap space: 1GB recommended; 512MB minimum
- 

*Operating system: IBM @server iSeries (OS/400), 5722SS1, Version 5 Release 1 or later*

- Processor: All processor features are supported for IBM @server iSeries Models 730, 740 and 8xx. For additional supported models and processor features, see [ibm.com/servers/eserver/series/sametime/sysreq.html](http://ibm.com/servers/eserver/series/sametime/sysreq.html)
  - RAM: 1GB recommended; 512MB minimum
  - Disk space: 1GB available disk space recommended to allow space for meetings; 500MB minimum
  - Disk drives: minimum of 4 drives
- 

### Client operating system requirements

---

*Client operating systems*

- IBM AIX, Version 5.2
  - Red Hat Enterprise Linux, Version 3.0 Workstation
  - Sun Solaris, Version 8 and Version 9
  - Windows 2000 Professional with Service Pack 3 or Windows XP Professional
  - Citrix Metaframe XP
-

---

## IBM Lotus Instant Messaging and Web Conferencing 6.5.1 at a glance (continued)

---

### Browsers

---

#### Windows:

- Microsoft Internet Explorer, Version 5.5 with Microsoft Java Virtual Machine (JVM), Version 1.1 or Sun JVM, Version 1.4.1 or Version 1.4.2
  - Internet Explorer, Version 6.0 with Microsoft JVM, Version 1.1 or Sun JVM, Version 1.4.2
  - Mozilla 1.4.1
- 

#### UNIX®:

- IBM AIX - Mozilla, Version 1.4.1 with IBM JVM, Version 1.4.1
  - Sun Solaris - Mozilla, Version 1.4.1 with Sun JVM, Version 1.4.1 and Version 1.4.2
  - Red Hat Linux - Mozilla, Version 1.4.1 with Sun JVM, Version 1.4.1 and Version 1.4.2
- 

### Directories

---

#### IBM Lotus Domino

- Lotus Domino 6.5.1
- 

#### LDAP:

- LDAP, Version 3
  - IBM Lotus Domino LDAP
  - Netscape iPlanet
  - Microsoft Active Directory
  - IBM SecureWay® directory server
- 



© Copyright IBM Corporation 2004

Lotus Software  
IBM Software Group  
One Rogers Street  
Cambridge, MA 02142  
U.S.A.

Produced in the United States of America  
04-04  
All Rights Reserved

AIX, Domino, e(logo)business on demand lockup, @server, Everyplace, IBM, the IBM logo, iSeries, Lotus, Lotus Notes, Notes, OS/400, PowerPC, pSeries, QuickPlace, Sametime, SecureWay and WebSphere are trademarks of International Business Machines Corporation in the United States, other countries or both.

Intel and Pentium are trademarks of Intel Corporation in the United States, other countries or both.

Microsoft and Windows are trademarks of Microsoft Corporation in the United States, other countries or both.

Java and all Java-based trademarks are trademarks of Sun Microsystems, Inc. in the United States, other countries or both.

UNIX is a registered trademark of The Open Group in the United States and other countries.

Other company, product and service names may be trademarks or service marks of others.

\* For detailed install and configuration options, as well as more information on these features, please see the release notes and product documentation available in the separate audio adapter.