

Boost user and IT efficiency by deploying collaborative applications on a security-rich, easy-to-administer platform



Lotus® software

IBM Lotus Domino 6.5

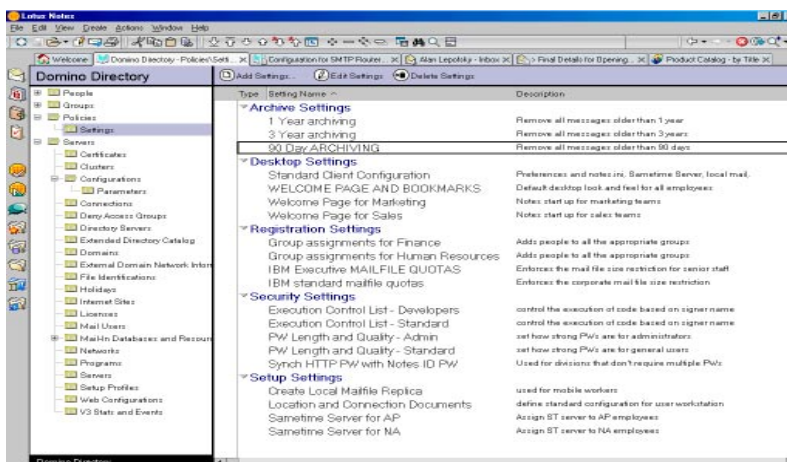
Highlights

- Provides flexibility by letting you deploy on multiple standards-based hardware platforms and operating systems
- Reduces time and costs required to deploy and configure software using Lotus Notes Smart Upgrade and Lotus Domino policy-based administration
- Streamlines system efficiency by decreasing bandwidth usage through integrated network compression
- Stores copies of critical e-mail automatically through mail-messaging journaling
- Maximizes server availability with advanced clustering, server fault recovery and automated diagnostic tools
- Helps prevent the delivery of unsolicited e-mail with server-based mail rules, anti-relay controls and DNS blacklist filtering
- Supports multiple organizations and multiple languages on a single server, reducing the need for additional hardware and software

Extend your infrastructure to keep pace with business demands

In today's rapidly changing business environment, it's essential that your IT systems keep up with user demands without breaking your budget. End users need anytime access to corporate data to remain productive. And infrastructure resources must be available around the clock. Hindered access and downtime can weaken your competitive edge, erode customer loyalty and cost your company short- and long-term revenue.

IBM Lotus® Domino™ 6.5 is a security-rich server platform that helps you and your end users work more efficiently by letting you rapidly build collaborative applications and messaging solutions. Share information with customers, partners and suppliers through the IBM Lotus Notes® client, a Web browser or mobile device. And communicate using feature-rich e-mail and scheduling. You can be confident that your data is always available through advanced replication and clustering features and your enterprise is protected with advanced security features. You can easily upgrade to Lotus Domino 6.5 server to take advantage of new, efficiency-enhancing functions, cost-reducing administrative features, and simplified deployment and management of your infrastructure.



Policy-based administration enables you to centrally control the client configuration and user preferences within your company.

Optimize your existing system by upgrading to Lotus Domino 6.5 server

Backward compatibility is fundamental to Lotus Domino server. Release 6.5 continues to preserve your existing Lotus Domino investment, beginning with key system databases, like the Lotus Domino directory, that help facilitate a smooth upgrade. Whether you're upgrading from an earlier Lotus Domino release or migrating from a competitive platform, Lotus Domino 6.5 server and your existing system can easily work together.

Lotus Domino server supports industry standards like Simple Mail Transfer Protocol (SMTP), Multipurpose Internet Mail Extensions (MIME), Post Office Protocol (POP3), Lightweight Directory Access Protocol (LDAP) and Secure Sockets Layer (SSL). It also runs on a variety of hardware and software platforms, including Linux. So you can choose how you want to deploy your messaging and collaboration infrastructure without completely overhauling your environment or becoming dependent on specific hardware and software to keep your business running.

Lower your total cost of ownership with cost-saving features

Lotus Domino 6.5 server provides the following features to help you make more efficient use of your infrastructure:

Network compression

Reduces the amount of data transmitted between a Lotus Notes workstation and Lotus Domino server or between two Lotus Domino servers — helping lower network expenses and remove network interface card bottlenecks to allow unlimited simultaneous access to your server.

Streaming replication

Facilitates the transfer of data more efficiently, reducing replication times and allowing users more rapid access to data. Documents are displayed as they are received, allowing end users to begin working right away, while the rest of the database is still replicating.

Single-copy template

Enables applications that share the same design (such as mail files) to share a single design template to reduce repeated elements, so you can save significant disk space. And, because design elements are centralized, maintaining design changes on each server is easy.

Lempel-Ziv (LZI) attachment compression

Saves disk space and replication time by compressing attachments more efficiently.

Server language packs

Provide administrators the ability to merge different languages into the standard Lotus Notes application templates. Having more than one language in a single template reduces the overhead associated with supporting multiple servers for multiple languages.

Extended access control lists and Lotus Domino extensible server pages hosting features

Allow Lotus Domino servers to host virtual companies in a single Lotus Domino domain, while allowing each organization to see only the appropriate information. This helps reduce costs and ease administration because you don't have to run separate domains for each company.

New features in Lotus Domino 6.5 server include the following:

Feature	Benefit
Platform support for Linux on IBM <i>@server</i> ® zSeries® 390 and Microsoft® Windows® 2003 Server	Expands the supported platforms that Lotus Domino server runs on, giving you the choice to run your messaging and collaboration infrastructure on the operating system that fits your needs
Replication of database unread marks between databases on clustered servers or on all servers where the database resides	Retains unread marks across servers so users can determine which documents they've read and which they haven't read no matter which server they use to access data
Ability to rename a resource by changing its name, site and, if the resource is type <i>other</i> , category	Lets you update your physical world (like renaming conference rooms) and reflect those changes in the calendaring system
A unified interface for fault recovery and clean-up scripts	Simplifies your job and provides automated tools to maintain maximum server availability
Ability to enable and disable the Lotus Notes system diagnostic tool (NSD) to collect diagnostic data, enable and disable server restarts and specify clean-up scripts—all from within the Lotus Domino server document	
Automatic storage of previous versions of server documents in XML format	Allows you to track and compare changes to your infrastructure
Automatic diagnostic collection tool that collects diagnostic data after server and client crashes and sends the data to a mail-in database when the server or client restarts	Provides ability to use collected data to determine the cause of the crash, enabling more rapid diagnoses and resolutions of server and client issues
Enhanced memcheck that locks memory pools when executed so no extraneous errors are reported during memory validation	Gives you more information to help diagnose errors, so you can resolve problems faster
Semaphore management that adds time stamps in the SEMDEBUG.txt file to more accurately correlate the timeouts to what is occurring in the server log	
Caching of the Internet password changes for single sign-on (SSO) users by the Lotus Domino 6.5 Web server	Provides enhancements to the Lotus Domino industry-leading security model
Ability to configure an SSO idle timeout to prompt users to enter their passwords again	
Ability of Lotus Domino for IBM z/OS® customers to exploit hardware cryptography for SSL	Lowers processor utilization, which leads to higher server scalability (for example, registering more users on the same hardware)
Platform statistics for Lotus Domino server on Linux operating system included in Lotus Domino statistics and monitoring	Increases IBM integration with the Linux platform, giving you a single location from which to monitor information about your Lotus Domino system and your server operating system
Server load that includes workloads for IBM Lotus Domino Web Access software, Internet Message Access Protocol (IMAP) and the R6Mail workload script	Lets you perform capacity-planning projects to more efficiently deploy Lotus solutions

Help users stay productive by providing reliable access to corporate data

Server downtime has plagued the IT industry, costing companies large amounts of money. But with Lotus Domino server, downtime can be virtually eliminated. The solid Lotus Domino server infrastructure helps you give your users reliable access to the people and information they require to operate effectively and efficiently. The following advanced features strengthen the availability of your business-critical data:

Lotus Domino clustering

Lets you configure two or more servers to synchronize databases in real time. So critical information is always available to your users. Clustering provides failover and load balancing to maintain high availability and optimum performance.

Transaction logging

Captures all the changes made to a database and writes them to a transaction log. This enables faster data backups and quicker server restarts after a server or media failure to help keep your system operational and your users productive.

Server fault recovery

Enables Lotus Domino servers to shut down and then restart automatically if a critical error is found. So your servers get up and running as fast as possible, maximizing uptime and minimizing interruption to end users. All without any intervention required by your system administrators.

Automatic diagnostic data collection tool

Allows a Lotus Notes client or Lotus Domino server to automatically gather all the necessary data to debug a crash and send it to a mail-in database when the client or server restarts. You now have a single location where you can see all the crashes that have occurred, helping resolve problems more quickly.

Simplify system deployment and management to save time

Lotus Domino server provides centralized control over your entire collaboration infrastructure. By automating repetitive administration tasks, simplifying user management and improving client deployment and configuration, you can save time and be free to work on more critical tasks. The following Lotus Domino 6.5 features can help simplify system administration:

Policy-based administration

Lets you centrally control the client configuration and user preferences within your company using policy categories such as registration, setup and desktop, mail archiving and security. You can apply policies to individuals, groups or your entire company. Once you've set up a policy, you can modify it, and the changes will automatically propagate down to the users. Policies enable you to centrally automate tasks like rolling out a corporate welcome page, applying higher password standards, enforcing mail archiving, setting database quotas and deploying bookmarks. By enabling low-touch deployment to user machines, you can devote more time to other tasks.

IBM Lotus Notes Smart Upgrade

Enables you to automatically install Lotus Notes client software and control installation and configuration settings using policies and standard Windows installer (.msi) transform files. So there's no need for user interaction. When your company is ready to upgrade users to a new client release, the process is quick and simple.

Microsoft Active Directory integration within the Lotus Domino administrator client

Enables Microsoft Windows administrators to reliably manage users and groups from a single management console. So you can save time by eliminating duplicate effort.

Fully featured, Web-based administration tool

Provides access to the most popular server and user administration features, including registering users, accessing the server console, fixing database issues remotely and tracking e-mail messages—all conveniently from a browser on any machine in your network.

Java™ console

Provides authenticated connections to multiple servers at once, simplifying server management by letting you quickly monitor multiple servers and broadcast commands to all connected servers from a single point. You can access relevant information quickly by filtering console messages based on categories or levels of security.

And visual enhancements like font and color—controlled from any Lotus Domino server or administrator client—make it easy for users to distinguish between urgent and informational messages at a glance. So they can efficiently prioritize messages.

Integrated Lotus Domino monitoring

Keeps you informed of your system activity and platform use. For example, you can configure statistics and monitors to alert you when disk space is running low, e-mail is not routing or databases are not replicating on schedule. So you can correct problems before they become expensive.

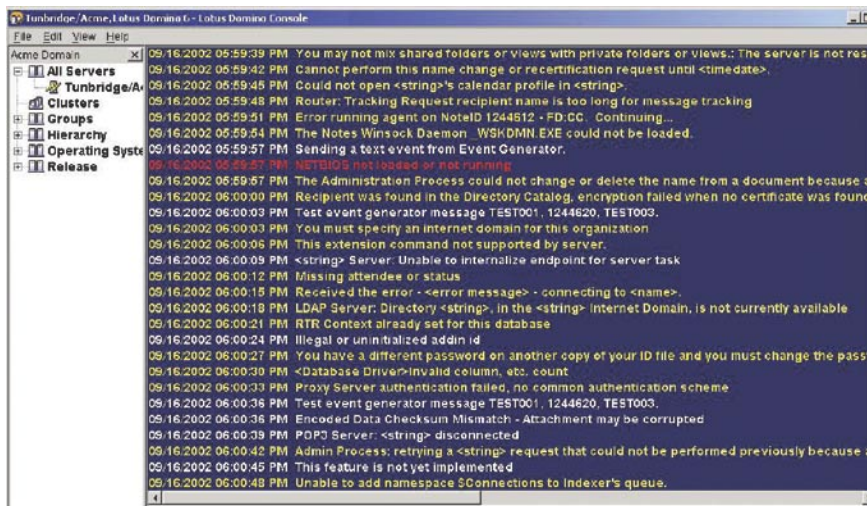
Server activity logging

Lets you record and measure server usage by user and application.

Coupled with IBM Tivoli® Analyzer for Lotus Domino software, detailed activity logging helps you plan for growth—including hardware upgrades—and matches workloads to hardware capacity to help avoid overburdening the server.

IBM Tivoli Analyzer for Lotus Domino software (purchased separately)

Includes server health monitoring, offering real-time assessment and recommendations to improve server performance. This software identifies existing and potential server problems and offers proactive solutions to help increase server uptime. Tivoli Analyzer for Lotus Domino software also includes the activity trends feature that provides data collection, data exploration and resource balancing functions. These tools match server workload to server capacity to help keep your infrastructure running at an optimal level.



The Java console feature in Lotus Domino 6.5 server is an enhanced alternative to the traditional server console.

Drive efficiency by streamlining messaging and directory services

The control and administration of your messaging infrastructure is crucial to providing users an efficient and robust collaboration platform. Integrated messaging and directory services are the core of Lotus Domino server. These services provide world-class e-mail, calendar and scheduling, discussion databases and address books in a unified, easy-to-manage architecture. Lotus Domino server provides all the tools end users and system administrators need to work efficiently and reliably.

Spam prevention

Directs the mail router to check incoming e-mail against public or private domain name server (DNS) blacklists to see if the sender is allowed to send you e-mail. The router can also use server-based mail rules to apply conditions such as *if attachment name contains* or *if message size exceeds* to determine if any action—like deleting the message—should be taken instead of delivering the message.

Mail-message journaling

Allows you to configure the router to capture (and optionally encrypt) a copy of mail messages sent from or into your domain. This allows you to permanently store or otherwise process the message without user intervention.

Condensed (or mobile) directory catalogs

Aggregate information from multiple directories into a single database. These combined directories are extremely small, allowing users to replicate them locally to their machines. Local replication lets users address e-mail faster than when they have to access the server—even while offline.

Directory assistance

Increases your flexibility by allowing servers to look up information from LDAP directories—rather than just the primary Lotus Domino directory. You can configure directory assistance to provide client authentication, group lookups for database authorization and Lotus Notes mail addressing.

Central directory

Gives you an optional architecture in which some servers in the domain contain only documents required to configure servers. These servers use a remote primary Lotus Domino directory on another server to look up information about users and groups. Using the remote directory saves disk space and provides quick access to new information because the servers aren't required to wait for the information to replicate to them. It also provides tighter administrative control because only a few directory replicas contain user and group information.

Deliver collaborative applications to help users work more productively

Lotus Domino collaborative applications enable users to share, collect, track and organize information so they can perform their jobs more efficiently. With Lotus Domino server, developers can create collaborative solutions that provide a variety of productivity-

enhancing business functions. Lotus Domino applications can include workflows that route information, forums that facilitate community discussions, customer relationship management (CRM), project tracking, supply chain or customer support solutions. Users have the flexibility to access Lotus Domino applications from Lotus Notes clients, Web browsers, portals, mobile devices and any Object Linking and Embedding (OLE)-compliant application, such as Microsoft Office.

The fully integrated Lotus Domino global workbench translation tool is designed to translate Lotus Domino databases and Web sites into a variety of languages. By writing an application only once that is accessible in a variety of languages, you can efficiently deliver Lotus Domino solutions to your users around the globe.

Help increase your return on investment by deploying collaborative solutions

Your return on investment can increase with each collaborative solution you deploy within the Lotus Domino environment—and is limited only by your creativity. For example, IBM Lotus Domino Designer®, an application development environment integrated with Lotus Notes software, enables developers and Web site designers to easily create, manage and deploy security-rich,

collaborative applications. Developers are free to use the programming language that best fits their requirements, including the Lotus formula language, LotusScript, JavaScript, Java/CORBA, XML, Component Object Model (COM)/OLE, Messaging Application Programming Interface (MAPI), JavaServer Pages (JSP) tags and C/C++ application programming interfaces (APIs). So they can use languages they know instead of spending time and money learning a new language. And using Lotus Domino Designer 6.5, developers can dramatically enhance Lotus Domino applications with online awareness and instant messaging in just a few simple steps. So your users can interact with team members in real time to help increase their productivity.

To help maximize your return on investment, IBM provides several ways to extend the reach of your Lotus Domino data to communities beyond your internal Lotus Notes client users.

- *Lotus Domino server provides an integrated Web application server with browser access to data stored in both the file system and in Lotus Domino databases.*

- *Lotus Domino server lets your developers easily incorporate back-end enterprise data into your Lotus Domino applications. Tools and services, such as IBM Lotus Enterprise Integrator® software and Lotus Domino connection services, enable connections to your company's relational databases, such as Oracle and IBM DB2® databases. Enterprise resource planning systems, such as SAP, PeopleSoft, and J.D. Edwards. And transaction systems, such as Customer Information Control System servers, IBM MQSeries® software and IMS™ transaction management system.*
- *The Lotus Domino toolkit for IBM WebSphere® Studio plug-in lets developers use drag-and-drop functionality to rapidly build JSP Web pages that integrate Lotus Domino data.*
- *Standard Lotus Domino portlets (for e-mail, calendar, to-do and database views) and the more advanced Lotus Domino portlet builder allow Lotus Domino data to be easily surfaced in IBM WebSphere Portal software.*
- *IBM Lotus Domino Everyplace® software lets users access their e-mail, calendars, to-do lists and your company's custom Lotus Domino applications from a variety of mobile devices, including smart phones and personal digital assistants (PDAs).*

Protect your competitive edge by safeguarding business-critical data

Protecting corporate data is essential to your company's success and competitiveness. Lotus Domino multitier security features let you define security parameters at several levels—ranging from server access to controlling individual fields on a document. Lotus Domino server fully supports industry security standards, including SSL, Secure/Multipurpose Internet Mail Extensions (S/MIME) and x.509 certificate authorities. These features, along with built-in digital signatures and encryption, let you rest easy knowing your data is protected.

Lotus Domino server helps protect your enterprise data at three levels:

Server level

When users or servers try to access Lotus Domino server, their names must be authenticated and validated before access is permitted. So only authorized users are allowed onto the server. You can even configure optional checks to control port access and whether names are contained in deny access lists.

Database level

Every Lotus Domino database is controlled by an access control list (ACL). The ACL determines the level of access users and servers have, starting from no access and increasing to depositor, reader, author, editor, designer and manager access. Within each level you can control who can create new documents, delete documents and even who can replicate or copy documents.

Data level

For each database, your application developers can control document access at the view level, at the form level, for specific sections within a form and even individual fields. They can also configure fields or entire documents to be encrypted so that only users or servers with the proper keys can see or read the data.

Leading-edge services and solutions—whenever and wherever you need them

Choosing Lotus software from IBM means you have access to the vast resources available through the global team at IBM Software Services for Lotus and our network of qualified Business Partners. We're here to help you quickly maximize the capabilities of and speed return on your Lotus software investments. Through expert consultation, in-depth understanding of Lotus technologies, custom application development, real-world experience and knowledge transfer, we can help you turn your IT investments into quantifiable business value. To learn more, visit ibm.com/lotus/services or ibm.com/lotus/partners.

For more information

To learn more about IBM Lotus Domino 6.5 server, visit:

ibm.com/lotus/domino

IBM Lotus Domino 6.5 at a glance

Supported platforms and minimum hardware requirements

IBM AIX®, Versions 5.1 and 5.2

- PowerPC, POWER, POWER2 or POWER3 RS64 processor
 - 192MB RAM (256MB or more recommended)
 - 1GB disk space (1.5GB or more recommended)
-

IBM OS/400®, Versions 5.1 and 5.2

- PowerPC (RISC) processor
 - 288MB RAM (512MB or more recommended)
 - 1GB disk space (1.5GB or more recommended)
-

IBM z/OS, Versions 1.2 and higher

- 1GB RAM (2GB or more recommended)
 - 3 3390-3 volumes disk space
-

Red Hat Enterprise Linux AS, Version 2.1 (using uniprocessor only) powered by UnitedLinux, Version 1.0 with Service Pack 2

- Intel® x86 processor
 - 128MB RAM (192MB or more recommended)
 - 1GB disk space (1.5GB or more recommended)
-

UnitedLinux, Version 1.0 for IBM S/390®

- IBMS/390 G5/G6 or IBM @server zSeries (z800, z900 or z990) processor
 - 1GB RAM (2GB or more recommended)
 - 2.5GB disk space (2.5GB or more recommended)
-

Microsoft Windows NT®, Version 4.0; Windows 2000 Server; Windows 2000 Advanced Server; Windows Server 2003 and Windows Server 2003, Enterprise Edition

- Intel Pentium® processor
 - 128MB RAM (192MB or more recommended)
 - 1GB disk space (1.5GB or more recommended)
-

Sun Solaris 8 and 9 operating environments

- UltraSPARC or newer processor
 - 192MB RAM (256MB or more recommended)
 - 1GB disk space (1.5GB or more recommended)
-



© Copyright IBM Corporation 2003

Lotus Software
IBM Software Group
One Rogers Street
Cambridge, MA 02142
U.S.A.

Produced in the United States of America
10-03
All Rights Reserved

AIX, DB2, Domino, Domino Designer, the e-business logo, @server, Everyplace, IBM, the IBM logo, IMS, Lotus, Lotus Enterprise Integrator, Lotus Notes, MQSeries, OS/400, S/390, Tivoli, WebSphere, z/OS and zSeries are trademarks of International Business Machines Corporation in the United States, other countries or both.

Intel and Pentium are trademarks of Intel Corporation in the United States, other countries, or both.

Microsoft, Windows and Windows NT are trademarks of Microsoft Corporation in the United States, other countries or both.

Java and all Java-based trademarks are trademarks of Sun Microsystems, Inc. in the United States, other countries or both.

Other company, product and service names may be trademarks or service marks of others.