

IBM Lotus Enterprise Integrator for Domino 6.5

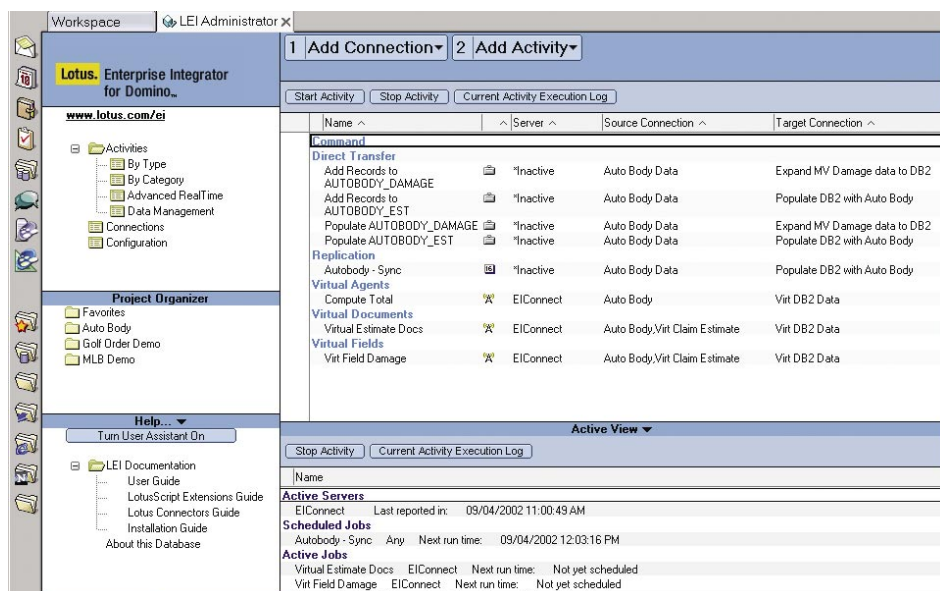
Highlights

- **Enables you to rapidly create automated business-process solutions that can increase employee productivity**
- **Reduces the need for programming with simple point-and-click development**
- **Saves time and money by supporting installation on multiple Lotus Domino partitions**
- **Unifies corporate and Lotus Domino technology-based data into one application to leverage your current application investments**
- **Lets users access and view corporate data within Lotus Domino server no matter where the data resides**
- **Lets users access business-process automation solutions through familiar Lotus Notes or Web browser interfaces**

Access hard-to-reach external data inconspicuously

When changes occur in your organization, your IT infrastructure has to be able to keep up. Whether your company experiences a major reorganization or is involved in a merger, you need to preserve your data's integrity, protect your company's investments and help maintain your employees' productivity. Your staff needs continued access to important corporate data stored on disparate platforms without having to learn new and costly applications.

With IBM Lotus Enterprise Integrator® for Domino 6.5 software, changes are easy to manage. This server-based data access tool enables enterprise-wide data exchange across different platforms, including IBM Lotus® Domino™ server, IBM DB2® Universal Database™ software, Oracle, Sybase, Object Linking and Embedding database (OLE DB), text and Open Database Connectivity (ODBC) data



The Lotus Enterprise Integrator 6.5 administrator user interface lets you control both data management and advanced real-time capabilities.

sources. And it enables data exchange across enterprise resource planning applications, like SAP/R3. Your external corporate data or automated business-process solutions can be easily accessed in real time without necessitating a transfer of data from one platform to another. Or you can simply synchronize your static data with Lotus Domino server. Lotus Domino end users and developers need not be concerned about where data resides.

If your company is involved in a merger with another company, for example, important data may exist on two separate platforms, one from each company. With Lotus Enterprise Integrator 6.5 software, employees from both companies can easily access data from both platforms and view it within one Lotus Domino application. Users can show Oracle data in a Lotus Domino view. Access DB2 data from two different servers in the same Lotus Domino view. Or perform a full-text search in multiple data repositories at the same time. All with point-and-click ease. When your company is ready to transfer from one platform to another, you can use the Lotus Enterprise Integrator 6.5 direct transfer activity to migrate the data.

This solution helps maintain your staff's efficiency by saving time. It also saves money by leveraging your Lotus Domino investments. And it lets you conveniently extend your existing relational database management systems' (RDBMS) data management capabilities.

Maintain up-to-date information with data management features

Lotus Enterprise Integrator 6.5 software uses activities to efficiently integrate enterprise data from one system to another using one of two methods. One method is through data management features, the foundation of Lotus Enterprise Integrator 6.5 capabilities. Data management, or batch mode, facilitates one-way or bidirectional data flow to keep data synchronized inconspicuously between two databases on a scheduled or event-driven basis. These tools are ideal when you need to synchronize static data with minimal use of system resources like network bandwidth, throughput and processor use that your Lotus Domino server relies on. The Lotus Enterprise Integrator 6.5 user interface (UI) also makes the integration of information to the Lotus Domino server or other external systems easy.

Quickly access dynamic data in real time

The other method of integrating corporate data from one system to another is through real-time capabilities. Lotus Enterprise Integrator 6.5 software supports leading-edge advanced real-time data access, which enables you to use Lotus Domino 6.0.3 and 6.5 applications to access and manipulate changing enterprise data in real time—in its native format and as if it resided on the Lotus Domino server. You can still design Lotus Domino application UIs as you always have. But the advanced real-time technology enables you to also capture external, non Lotus Domino data sources in real time within those Lotus Domino applications. Enabling real-time access to business-critical data helps users work more efficiently. Allowing data to remain stored in its original format helps preserve data integrity. And letting users continue to use a Lotus Domino application they already know means you don't have to incur the time and cost of retraining.

Reduce hardware costs and administration time using server partitioning

Installing Lotus Enterprise Integrator 6.5 software into multiple Lotus Domino partitions lets you run multiple instances of Lotus Domino server on a single computer. So instead of purchasing many small computers to run Lotus Domino servers, you can purchase a single, more powerful computer. This helps reduce hardware expenses and minimizes the number of computers you have to administer.

Retrieve data efficiently and safely from external systems with enhanced integration activities

Lotus Enterprise Integrator 6.5 software enhances the existing activities, like virtual field activities, with two new ones: virtual document and virtual agent activities. And it includes two new features: virtual attachments and integrated credentials.

Virtual document activity

The virtual document activity extends the virtual fields activity by replacing the need for key documents, which were needed to link to records stored in your external system. Extending the virtual fields activity enables users to

IBM Lotus Enterprise Integrator 6.5 new features

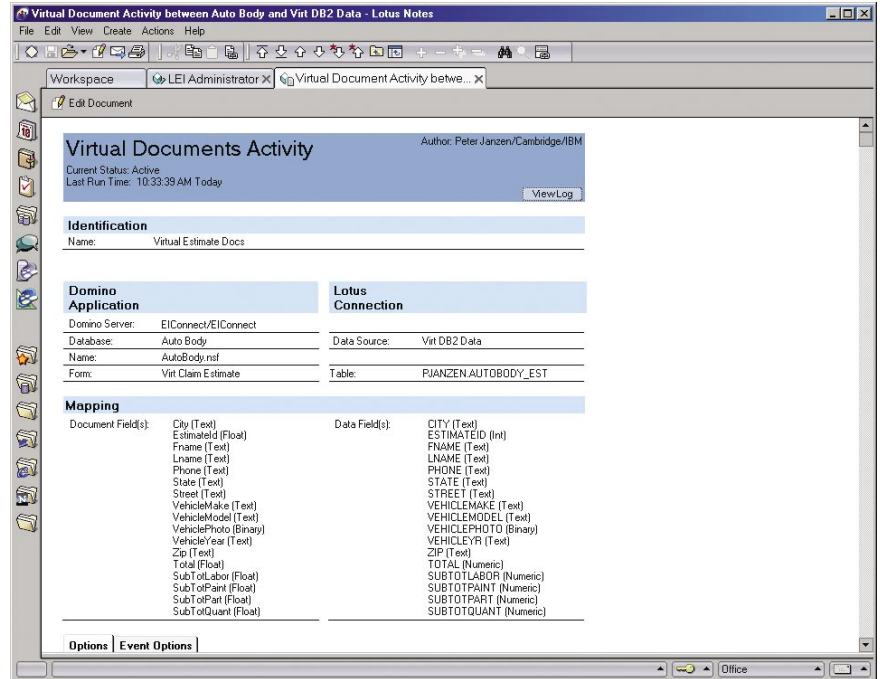
Feature	Benefit
Support for partitioned servers	Run multiple instances of Lotus Domino server on a single computer to help reduce hardware costs. And administer fewer computers, which can help increase your productivity.
Enhanced ODBC driver support for IBM Lotus Connector for ODBC software	Use DataDirect Connect for ODBC, Version 4.2 wire protocol drivers, which include all required software to connect to a relational database. You can save time by not having to install additional software and through simplified integration between the drivers and the database.
Expanded relational database connectivity options for IBM @server™ iSeries™ server	Leverage existing databases with the ability to use Lotus Connector for ODBC with DataDirect ODBC driver for Oracle, IBM Informix® database servers, Microsoft® SQL Server software and Sybase software — without having to migrate data to iSeries server.
Performance improvements for virtual document activities	Save time with more responsive applications, for both Lotus Notes and Web browser users, and experience fewer Lotus Domino timeouts due to long waits.
Read-access control for connection and activity documents	Restrict who can view connection and activity documents, tables and columns within the Lotus Enterprise Integrator administrator database. This helps prevent unauthorized people from triggering unwanted actions.
Enhanced reporting	Help reduce operating and maintenance costs through simplified Lotus Enterprise Integrator administration.

access and manipulate entire IBM Lotus Notes® documents stored in external systems within a familiar Lotus Domino view. And at the same time, it maintains Lotus Notes functionality like sorting, deleting and searching for documents that contain your data. So you save time by eliminating the need to synchronize key documents with external records. Lotus Enterprise Integrator 6.5 provides faster view refreshes and document displays to save even more time, and it leverages users' existing Lotus Notes skills to shorten the learning curve.

Virtual documents also eliminate the need for redundant data, so the information doesn't need to be maintained in both the RDBMS and Lotus Domino server. Because data resides in the RDBMS, end users can access the most up-to-date data. And it eliminates the overhead associated with storing data in two places. The new virtual attachment feature is enabled in the virtual document or virtual field activity.

Virtual agent activity

The virtual agent activity extends standard agent capabilities by allowing users to expose and use business procedures stored in external relational databases. Users can manipulate



Take advantage of point-and-click ease when creating virtual document activities.

these external procedures as if they were Lotus Domino agents. So your company can leverage its investments in its externally stored business procedures. And employees can control the procedures from a familiar Lotus Domino application. For example, if your company has an expense-reimbursement workflow application, when the manager approves the reimbursement, a virtual agent can be used to run a stored procedure in an external system. This initiates the reimbursement process, issuing a check to the employee.

Virtual attachments feature

The virtual attachments feature lets users view attached files stored in external databases within a Lotus Notes document. External files that would have been difficult to access are easily reached using a familiar Lotus Domino application. These attachments, stored in their native format, look and function like Lotus Domino attachments. Users can view, open, detach or edit them online as if they resided in the Lotus Domino environment. Virtual attachments can also be searched

using the Lotus Domino full-text search feature. This helps maintain efficiency by making data access from external systems unnoticeable to the user. And it can save you money by leveraging native Lotus Domino functionality.

Integrated credentials feature

Integrated credentials—enabled in the virtual document, virtual field or virtual agent activity—give you the ability to assign different access rights to each user. Instead of using one common user ID and password for all employees to access external corporate information, each user gets a unique user ID and password based on the level of access needed. For example, certain employees may need only view rights to specific data, while managers need to be able to update as well as view data. These integrated credentials give your enterprise another layer of security by letting you control access to your external data through advanced real-time features—helping keep your data safe.

Rapidly create automated business solutions with less programming

Lotus Enterprise Integrator 6.5 rapid application-development (RAD) capabilities enable you to automate business solutions as quickly as you need them—with less need for additional programming. Easy point-

and-click development through a Lotus Notes client interface, browsing of external metadata and visual mapping of fields between data stores make the process more efficient.

Use a familiar interface while preserving data integrity

Lotus Domino applications enabled by Lotus Enterprise Integrator 6.5 software continue to offer users the same familiar interface they've always used—like Lotus Notes client or a Web browser—to access mission-critical data. This minimizes the need to retrain users, avoids disruption to users and lets you leverage your existing Lotus Domino investments—all of which help lower costs. With Lotus Enterprise Integrator 6.5 real-time capabilities, you can store data and automated business-process solutions in their original formats. So you can confirm that data access rules are followed and that business logic and security features defined in the source application are fully preserved. The integrity of your data is protected. And users can have access to the most up-to-date data, which may be continually changing in an external system. Everyone can be confident about retaining important information or processes.

Work virtually anywhere, with any client

With mobile support from the IBM Lotus Domino Everyplace® family of servers, users can access critical corporate data whenever they need it. From a Web browser, Lotus Notes client, a personal digital assistant or even a wireless application protocol-enabled mobile phone. This includes both data accessed in real time and data stored in Lotus Domino server but handled through one of the data management activities. The ability to access important information from almost anywhere helps save time and increases flexibility and productivity.

Maintain control of your data

Market and organizational changes can render your data inaccessible. Lotus Enterprise Integrator 6.5 software gives you the flexibility of both real-time data integration, with advanced real-time technology, and event-driven or scheduled synchronization of data, with data management activities like direct transfer and replication. Users can leverage your existing Lotus Domino investments to access external data in real time—without costly new application training. You can benefit from RAD capabilities by quickly and easily creating automated business-process applications with minimal programming. Lotus Enterprise Integrator 6.5 mobile capabilities let

your users adapt to the changing needs of their business—even when business takes them out of the office. And it lets your staff do all of this while preserving the integrity of your external data.

**Leading-edge services and solutions—
whenever and wherever you need them**

Choosing Lotus software from IBM means you have access to the vast resources available through the global team at IBM Software Services for Lotus and our network of qualified Business Partners. We're here to help you quickly maximize the capabilities of and speed return on your Lotus software investments. Through expert consultation, in-depth understanding of Lotus technologies, custom application development, real-world experience and knowledge transfer, we can help you turn your IT investments into quantifiable business value. To learn more, visit ibm.com/lotus/services or ibm.com/lotus/partners.

For more information

To learn more about Lotus Enterprise Integrator for Domino 6.5, visit: ibm.com/lotus/lei

IBM Lotus Enterprise Integrator 6.5 at a glance

Supported platforms

- Microsoft Windows NT®, Version 4 with Service Pack 6a
- Microsoft Windows® 2000
- Microsoft Windows 2003
- Sun Solaris operating environment 8 and 9
- IBM AIX®, Versions 4.3.3, 5.1 and 5.2
- IBM AS/400®
- IBM OS/400®, Versions 5.1 and 5.2
- IBM @server iSeries
- Red Hat Linux 7.2
- UnitedLinux powered by UnitedLinux, Version 1.0 with Service Pack 2

Hardware requirements

- 40MB available disk space for Windows NT and Windows 2000 operating systems
- 80MB available disk space for Solaris and AIX operating environments

Software requirements

- IBM Lotus Domino 6.0.3 or 6.5 server
- IBM Lotus Notes 6.0.3 or 6.5 client

Supported data source connectors

- IBM Lotus Connector for DB2 with DB2 Universal Database, Versions 7.x and 8.1
 - IBM Lotus Connector for File System
 - IBM Lotus Connector for Lotus Notes
 - IBM Lotus Connector for Text
 - IBM Lotus Connector for Oracle 7 with Oracle 7.3.4 and 8.0.5
 - IBM Lotus Connector for Oracle 8 with Oracle 8.0.5, 8i and 9
 - IBM Lotus Connector for Sybase 12.5
 - IBM Lotus Connector for OLE DB with Microsoft SQL Server 2000 and Microsoft Access 2000
 - IBM Lotus Connector for ODBC with DataDirect Connect for ODBC, Version 4.2 Lotus branded drivers (Any of the DataDirect Connect for ODBC drivers in the 4.2 driver pack can be used with Lotus Connector for ODBC software.)
 - Lotus Connector for SAP, Version 1.7, which is a premium connector for and not supplied with Lotus Enterprise Integrator 6.5 software. Lotus Connector for SAP is available as a separate but integrated product. For more information, visit ibm.com/lotus/ldd, select Lotus Documentation, by product and Lotus Connector for SAP R/3.
-



© Copyright IBM Corporation 2003

Lotus Software
IBM Software Group
One Rogers Street
Cambridge, MA 02142
U.S.A.

Produced in the United States of America
09-03
All Rights Reserved

AIX, AS/400, DB2, DB2 Universal Database, Domino, the e-business logo, @server, Everyplace, IBM, the IBM logo, Informix, iSeries, Lotus, Lotus Enterprise Integrator, Lotus Notes and OS/400 are trademarks of International Business Machines Corporation in the United States, other countries or both.

Microsoft, Windows and Windows NT are trademarks of Microsoft Corporation in the United States, other countries or both.

Other company, product and service names may be trademarks or service marks of others.