



# Consulting by Degrees

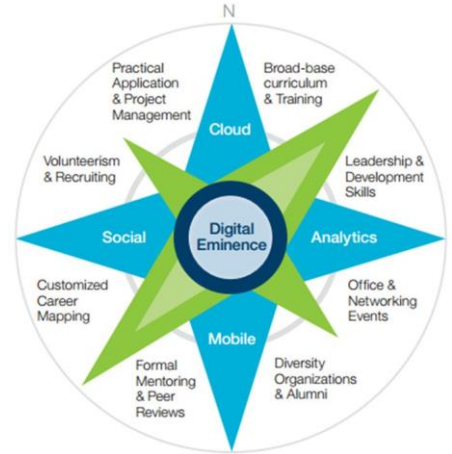
Experience. Grow. Transform.

We live in an incredible time of transformation for business, society and even the workplace. The emergence of cloud, analytics, mobile and social are driving leaders to reevaluate their thinking – to adopt technology as a strategic business driver rather than merely an enabling strategy. It’s a shift that’s transforming organizations, centered on their relationships with customers and the superior Experience they deliver to them, and flows through every aspect of their supporting operations and culture.

At IBM Global Business Services, this shift is providing new career opportunities in professions that didn’t exist before the convergence of data and technology and work in ground breaking new service areas such as IBM Interactive Experience – a new breed of digital agency at the intersection of consulting, agency and IT provider. Interested?

### Experience the Exceptional Opportunities

- Join an elite development program, unmatched in the marketplace
- Be part of a small community and connect locally with your peers and managers
- Foster your collaboration and teaming skills with global teams
- Benefit from customised career, planning and one-on-one attention mentoring
- Gain leadership and development skills using a tailored education path
- Develop greater depth of experiences through diverse project roles



### What do we look for in a successful IBM consultant?

- Strong leadership and adaptability, with willingness to readily and voluntarily take ownership of highly challenging tasks and problems, even beyond initial scope of responsibility
- Thorough and analytical, with capability to apply logic to solve problems
- Ability to handle multiple tasks concurrently and meet deadlines, while maintaining focus despite conflicting demands
- Drive to overcome the most challenging or difficult obstacles and look for ways to improve results
- Initiative to actively seek new knowledge and improve skills
- Effective interpersonal skills with ability to collaborate and work effectively with individuals, strengthening relationships to achieve win-win solutions
- Ability to communicate complex situations clearly and simply by listening actively and conveying difficult messages in a positive manner
- A passion for innovative ideas and technologies coupled with the ability to understand and assimilate different points of view and desire to make an impact

### How to apply

Applicants are required to complete the on-line application (<https://ibm.referrals.selectminds.com/jobs/hong-kong-graduate-trainee-programme-consulting-trainee-consulting-209743>) and upload all the required documents in ONE PDF file to our website on or before the Application deadline: **December 1, 2015 (Tuesday)**

#### Required documents:

- Cover Letter (please specify which trainee position)
- Resume with full details, including your valid e-mail address and mobile number
- Academic transcripts copies (e.g. Bachelor and for Master degree transcripts with latest GPA score)
- HKDSE or [HKCEE and HKALE] certificate copies (for local students only)
- Reference letter & other supporting documents (if applicable)

#### Important Notes:

1. Combine all required documents in **ONE PDF file**
2. No amendment is allowed once submitted.

Our process has been designed not only for us to understand if you are right for us, but also for you to understand if we are right for you. So, take every opportunity you can to ask questions along the way!

Step	Activity	Date
1	Application Deadline	December 1, 2015
2	Online Aptitude Test	After application
3	English Written Test	Early January 2016
4	Group and Individual Interviews	January 2016 onwards
5	Panel Interviews	January 2016 onwards
6	Final Assessment Day	January 2016 onwards
7	Onboard	Early July 2016

\*Shortlisted applicants will be notified regarding the next stage in the recruitment