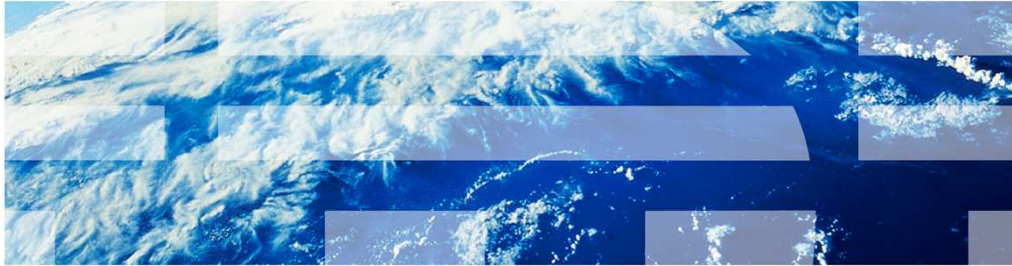


IBM Tivoli Provisioning Manager V7.2.1

Exporting and viewing workflow export log data



In this training module, you learn how to both export and view IBM Tivoli® Provisioning Manager V7.2.1 workflow export log data files.

Objectives

After completing this training module, you can accomplish these tasks:

- Explain what IBM Tivoli Provisioning Manager product does in LAN and WAN environments
- Define the IBM Tivoli Provisioning Manager term workflow
- View the status of IBM Tivoli Provisioning Manager workflows
- Export workflow XML log data files from IBM Tivoli Provisioning Manager
- Name software applications used for viewing XML data files

When you have completed this training module, you can perform these tasks:

- Explain what the IBM Tivoli Provisioning Manager product does in LAN and WAN environments
- Define the IBM Tivoli Provisioning Manager term workflow
- View the status of IBM Tivoli Provisioning Manager workflows
- Export workflow XML log data files from IBM Tivoli Provisioning Manager
- Name software applications used for viewing XML data files

Assumptions

- The system user has privileges to log in to IBM Tivoli Provisioning Manager
- All pop-up blockers are disabled that can prevent the usage of your web browser of choice for viewing XML data files

It is assumed that the system user has successfully logged in and that all settings in the web browser that prevent the viewing of XML data files have been disabled.

IBM Tivoli Provisioning Manager and workflows

IBM Tivoli Provisioning Manager (TPM) performs software deployment tasks by using workflows:

- Workflows automate software deployment to servers, desktops, and laptops that are distributed across different LAN and WAN locations
- Tivoli Provisioning Manager workflows perform all software deployment tasks
 - Tivoli Provisioning Manager uses a component that is called the Automation Package Development Environment (APDE) to develop workflow scripts
 - See the Tivoli Provisioning Manager v7.2.1 Administration category IBM Education Assistant entitled Automation Package Development Environment
- Tivoli Provisioning Manager provides reporting with enhanced query capabilities and improved discovery of managed resources
- Tivoli Provisioning Manager supports AIX®, Solaris, Linux®, and Windows®

IBM Tivoli Provisioning Manager automates the deployment of software applications to servers, laptops, and desktop computers in LAN and WAN environments. Scripts called workflows perform these deployment tasks.

Obtaining the workflow log XML data

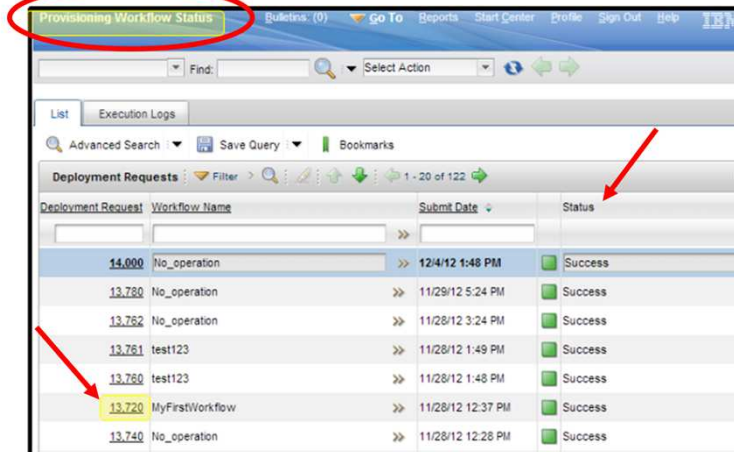
IBM Tivoli Provisioning Manager has two methods that you can use to obtain workflow log data:

- User interface method
- Command-line interface method

You can obtain log file XML data from either the user interface or the command-line interface.

Selecting workflow log data for review from the user interface

Log in to the IBM Tivoli Provisioning Manager user interface. From the Start Center, open the Provisioning Workflow Status application screen.



6

Exporting and viewing workflow vxport log data

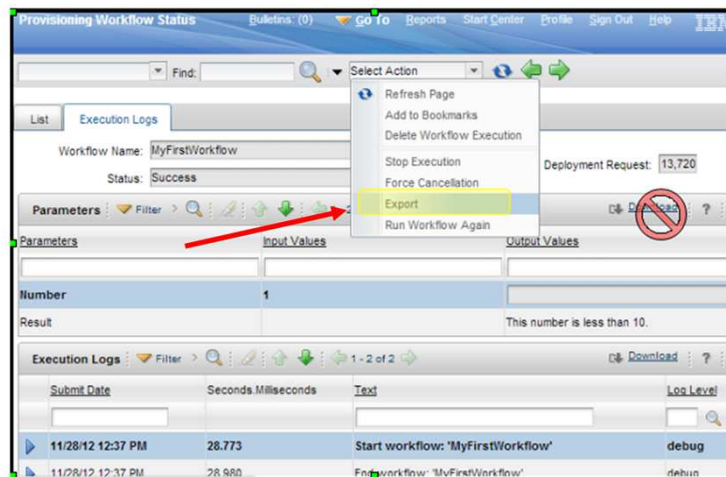
© 2013 IBM Corporation

Log in to IBM Tivoli Provisioning Manager from the user interface and check the status of all workflows from the Provisioning Workflow Status screen.

To view a particular workflow, click the Request ID of the workflow that you are interested in. This action opens the workflow and provides further details about the workflow processing that just took place. The Status field of a particular workflow shows whether a workflow either completed successfully or failed.

Exporting the log data for a particular workflow

After selecting a workflow by its Request ID, view the workflow. Click Select Action > Export.



7

Exporting and viewing workflow export log data

© 2013 IBM Corporation

After you select the workflow by its Request ID, you export the workflow log data. Click **Select Action**. From the drop-down menu, click **Export**.

Viewing exported workflow log file XML data

You can use these tools to view exported workflow log file XML data:

- XML editors
- Web browsers

After exporting the workflow log file XML data, use either an XML editor or a web browser to view the XML data.

Recommended text editors for viewing workflow XML log data files

These text editors that highlight syntax are recommended:

- Notepad ++
- Visual SlickEdit
- UltraEdit
- Gedit
- Vim
- XML Marker

Use a text editor that has a feature called syntax highlighting. Notepad++, Visual SlickEdit, UltraEdit, Gedit, Vim, and XML Marker all have this feature.

Reviewing workflow log XML data files in a web browser

XML log data file viewed in a web browser



```
This XML file does not appear to have any style information associated with it. The document tree is shown below.
<?xml version="1.0" encoding="UTF-8" standalone="yes" ?>
<workflow-execution-history>
  <deployment-request id="113720" workflow-name="MyFirstWorkflow" create-username="MAXADMIN" status="success">
    <execution-log workflow-name="MyFirstWorkflow" id="11480" date="Nov 28, 2012 12:37:26 PM" position="0" call-stack-level="0" log-text="Start workflow:
    &apos;MyFirstWorkflow&apos;">...</execution-log>
    <execution-log workflow-name="MyFirstWorkflow" id="11481" date="Nov 28, 2012 12:37:28 PM" position="1" call-stack-level="0" log-text="End workflow:
    &apos;MyFirstWorkflow&apos;">...</execution-log>
  </deployment-request>
</workflow-execution-history>
```

This slide shows an XML log data file viewed in a web browser.

Reviewing workflow log XML data files in a text editor

XML log data file viewed in a text editor

```
<?xml version="1.0" encoding="UTF-8"?>
<workflow-execution-history>
  <deployment-request id="13720" workflow-name="MyFirstWorkflow" create-username="MAXADMIN" status="success">
    <execution-log workflow-name="MyFirstWorkflow" id="11480" date="Nov 28, 2012 12:37:28 PM" position="0" call="1">
      <log-details position="0" name="Number">1</log-details>
    </execution-log>
    <execution-log workflow-name="MyFirstWorkflow" id="11481" date="Nov 28, 2012 12:37:28 PM" position="1" call="1">
      <log-details position="0" name="Result">This number is less than 10.</log-details>
    </execution-log>
  </deployment-request>
</workflow-execution-history>
```

You can also view XML log data in text editors.

Summary

Now that you have completed this training module, you can perform these tasks:

- Explain what IBM Tivoli Provisioning Manager product does in LAN and WAN environments
- Define the IBM Tivoli Provisioning Manager term workflow
- View the status of IBM Tivoli Provisioning Manager workflows
- Export workflow XML log data files from IBM Tivoli Provisioning Manager
- Name software applications used for viewing XML data files

Now that you have completed this training module, you can perform these tasks:

- Explain what the IBM Tivoli Provisioning Manager product does in LAN and WAN environments
- Define the IBM Tivoli Provisioning Manager term workflow
- View the status of IBM Tivoli Provisioning Manager workflows
- Export workflow XML log data files from IBM Tivoli Provisioning Manager
- Name software applications used for viewing XML data files



Feedback

Your feedback is valuable

You can help improve the quality of IBM Education Assistant content to better meet your needs by providing feedback.

- Did you find this module useful?
- Did it help you solve a problem or answer a question?
- Do you have suggestions for improvements?

Click to send email feedback:

mailto:iea@us.ibm.com?subject=Feedback_about_view_wrkflw_log_exp_xml.ppt

This module is also available in PDF format at: [../view_wrkflw_log_exp_xml.pdf](..view_wrkflw_log_exp_xml.pdf)

You can help improve the quality of IBM Education Assistant content by providing feedback.



Trademarks, disclaimer, and copyright information

IBM, the IBM logo, ibm.com, AIX, and Tivoli are trademarks or registered trademarks of International Business Machines Corp., registered in many jurisdictions worldwide. Other product and service names might be trademarks of IBM or other companies. A current list of other IBM trademarks is available on the web at "[Copyright and trademark information](http://www.ibm.com/legal/copytrade.shtml)" at <http://www.ibm.com/legal/copytrade.shtml>

Linux is a registered trademark of Linus Torvalds in the United States, other countries, or both.

Windows, and the Windows logo are registered trademarks of Microsoft Corporation in the United States, other countries, or both.

Other company, product, or service names may be trademarks or service marks of others.

THE INFORMATION CONTAINED IN THIS PRESENTATION IS PROVIDED FOR INFORMATIONAL PURPOSES ONLY. WHILE EFFORTS WERE MADE TO VERIFY THE COMPLETENESS AND ACCURACY OF THE INFORMATION CONTAINED IN THIS PRESENTATION, IT IS PROVIDED "AS IS" WITHOUT WARRANTY OF ANY KIND, EXPRESS OR IMPLIED. IN ADDITION, THIS INFORMATION IS BASED ON IBM'S CURRENT PRODUCT PLANS AND STRATEGY, WHICH ARE SUBJECT TO CHANGE BY IBM WITHOUT NOTICE. IBM SHALL NOT BE RESPONSIBLE FOR ANY DAMAGES ARISING OUT OF THE USE OF, OR OTHERWISE RELATED TO, THIS PRESENTATION OR ANY OTHER DOCUMENTATION. NOTHING CONTAINED IN THIS PRESENTATION IS INTENDED TO, NOR SHALL HAVE THE EFFECT OF, CREATING ANY WARRANTIES OR REPRESENTATIONS FROM IBM (OR ITS SUPPLIERS OR LICENSORS), OR ALTERING THE TERMS AND CONDITIONS OF ANY AGREEMENT OR LICENSE GOVERNING THE USE OF IBM PRODUCTS OR SOFTWARE.

© Copyright International Business Machines Corporation 2013. All rights reserved.