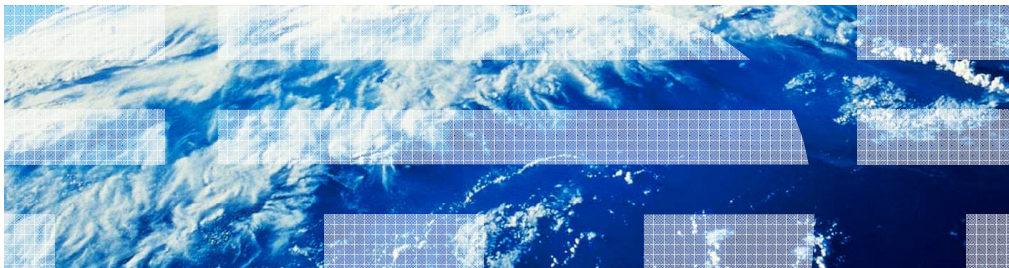


IBM WebSphere Application Server

AdminTask commands for deleting JDBC providers and data sources



This presentation describes support for the AdminTask commands of the JDBCProviderManagement group introduced in IBM WebSphere Application Server V8 to delete JDBC providers and data sources.

Table of contents

- Overview
- Usage scenarios
- Summary
- References

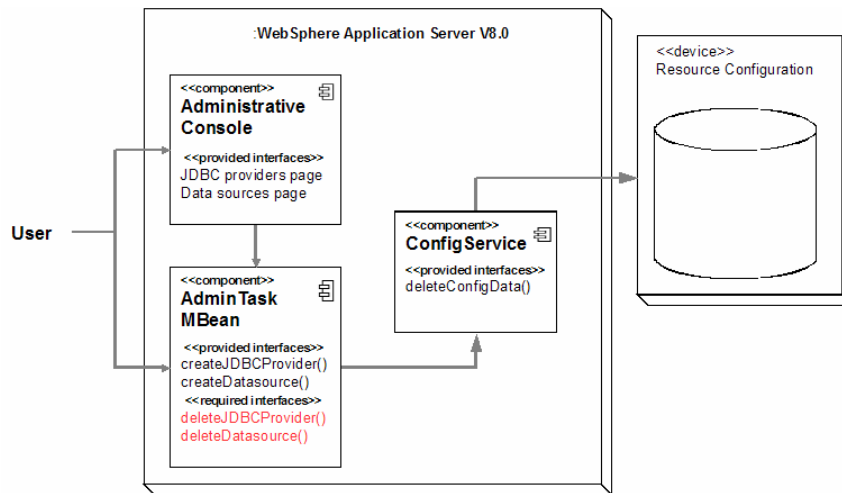
This presentation provides an overview of the `deleteJDBCProvider` and `deleteDatasource` commands and explains how to use the commands to delete both JDBC providers and data sources from a WebSphere Application Server resource configuration.

Overview

This section provides an overview of the new commands in the JDBC provider management group of the AdminTask command. The group provides a comprehensive set of commands to administrate JDBC resources.

What is the JDBC provider management group?

The administrative console and AdminTask interfaces



4

© 2011 IBM Corporation

Version 6.1 of WebSphere Application Server introduced the JDBCProviderManagement group to the AdminTask Mbean API. The group provided commands to create and list JDBC providers and data sources within a JDBC resource configuration. You can invoke the commands directly from the wsadmin application, or indirectly from the Administrative console application.

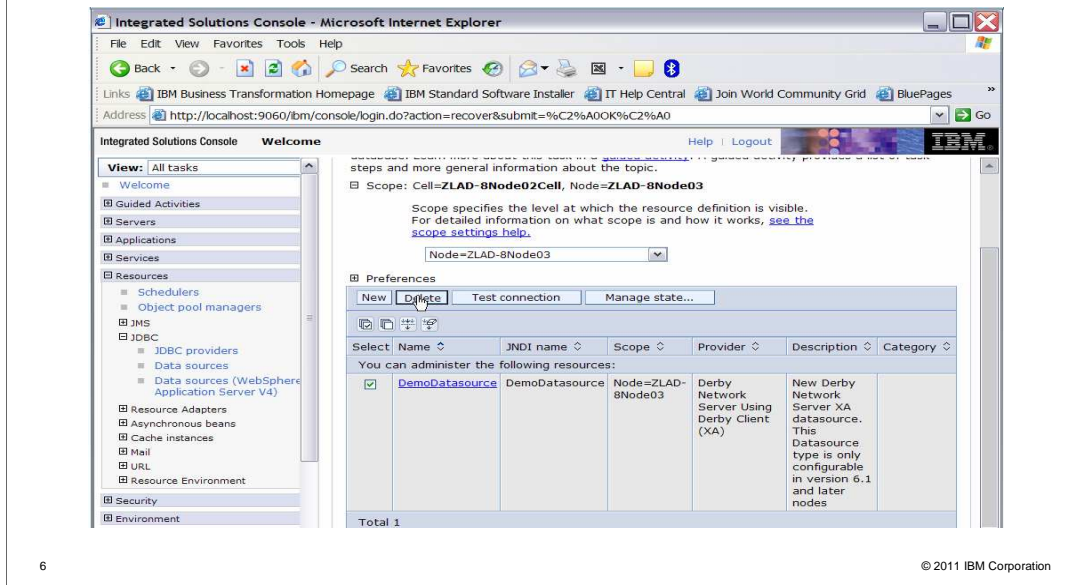
Version 8 introduces the deleteJDBCProvider and deleteDataSource commands to the group. The new commands, shown red in the diagram, complete an intuitive model for administering the JDBC provider resource configuration. Administrators should use the commands of the JDBCProviderManagement group only to manage the JDBC providers and data sources of a resource configuration with the expectation that all related elements in the configuration and the server runtime will be managed correctly.

Usage scenarios

This section explains how to delete JDBC providers and data sources from a WebSphere Application Server resource configuration using the commands of the JDBC provider management group.

Deleting a data source using the administrative console

The data sources page



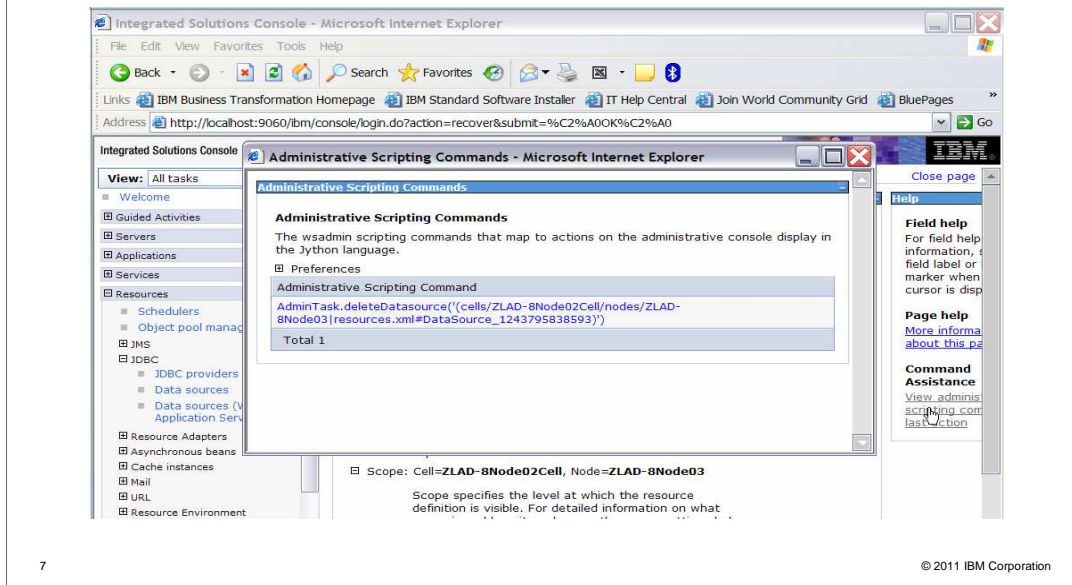
Again, you can invoke the commands programmatically using wsadmin, or interactively using the administrative console.

This slide depicts a data source within the JDBC resources page of the Administrative console. This data source will establish connections from applications to the Derby database via the Derby JDBC provider. A JDBC provider may be configured with zero or more data sources.

To delete the data source, simply check its adjacent check-box, click Delete, and save the change.

Obtaining command assistance

The Jython command script to delete a data source



Before saving, you can use command assistance to show the command task executed by the administrative console to delete the data source.

This is the same command an administrator would code in a wsadmin script or invoke interactively using the wsadmin application.

Upon saving, all artifacts related to this data source are removed from the resource configuration. Specifically, the data source is removed from Derby provider, and the provider is left intact.

Deleting a JDBC provider using the administrative console

The JDBC providers page

Scope specifies the level at which the resource definition is visible. For detailed information on what scope is and how it works, [see the scope settings help](#).

Node=ZLAD-8Node03, Server=server1

Preferences

New Delete

Select	Name	Scope	Description
<input checked="" type="checkbox"/>	DemoJDBCProvider	Node=ZLAD-8Node03, Server=server1	Derby Network Server Provider that uses the Derby Client. This provider is only configurable in version 6.1 and later nodes
<input type="checkbox"/>	Derby JDBC Provider	Node=ZLAD-8Node03, Server=server1	Derby embedded non-XA JDBC Provider
<input type="checkbox"/>	Samples Derby JDBC	Node=ZLAD-	Built-in Derby JDBC

Field help
For field help information, select field label or list marker when the h cursor is displayed

Page help
[More information about this page](#)

Command Assistance
[View administrative scripting command last action](#)

8

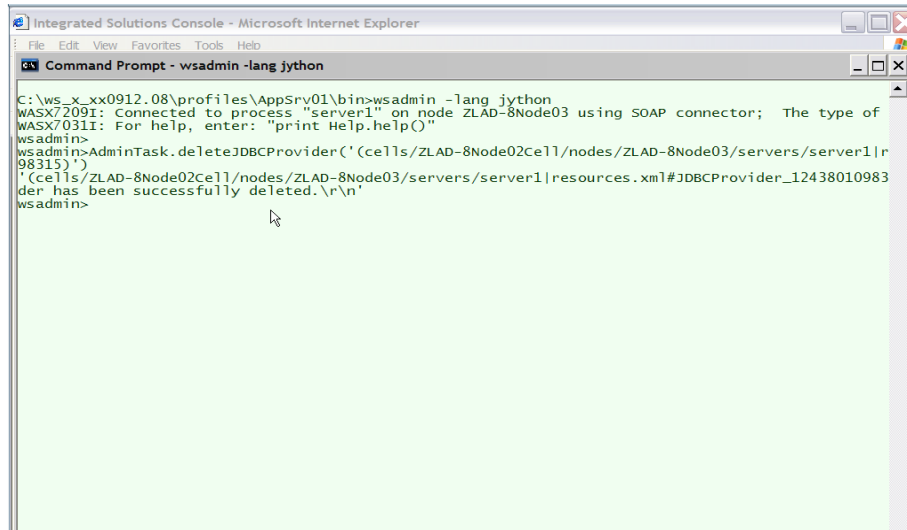
© 2011 IBM Corporation

This slide shows how to delete a JDBC provider using the administrative console.

Simply open the JDBC providers page, select the check-box adjacent to the provider, click Delete, and save the change.

Deleting a JDBC provider using wsadmin

The Jython command script



```
Integrated Solutions Console - Microsoft Internet Explorer
Command Prompt - wsadmin -lang jython
C:\ws_x_xx0912.08\profiles\AppSrv01\bin>wsadmin -lang jython
WASX7209I: Connected to process "server1" on node ZLAD-8Node03 using SOAP connector; The type of
WASX7031I: For help, enter: "print Help.help()"
wsadmin>
wsadmin>AdminTask.deleteJDBCProvider('(cells/ZLAD-8Node02Cell1/nodes/ZLAD-8Node03/servers/server1|r
98315)')
'(cells/ZLAD-8Node02Cell1/nodes/ZLAD-8Node03/servers/server1|resources.xml#JDBCProvider_12438010983
der has been successfully deleted.\r\n'
wsadmin>
```

9

© 2011 IBM Corporation

And finally, this slide shows how to delete the same provider by invoking the AdminTask Mbean using the wsadmin application.

Summary

This section provides a summary of the new commands in the JDBC provider command group and a list of end-user references.

Summary

- The JDBC provider management group provides administrators a uniform and consistent interface to manage JDBC resources
- Using the commands of the JDBC provider management group will decrease deployment time and reduce the occurrence of resource configuration errors

This slide summarizes the value of using the new commands of the JDBC provider management group.

The JDBC provider management group provides administrators a uniform and consistent interface to more intuitively manage JDBC resources. Using the group will enhance the user experience by decreasing deployment time and the occurrence of JDBC resource configuration errors.

References

- WebSphere Application Server information center topic “*JDBCProviderManagement command group for AdminTask object*”
<http://publib.boulder.ibm.com/infocenter/wasinfo/v8r0/index.jsp>

This slide lists references available to the end-user.



Feedback

Your feedback is valuable

You can help improve the quality of IBM Education Assistant content to better meet your needs by providing feedback.

- Did you find this module useful?
- Did it help you solve a problem or answer a question?
- Do you have suggestions for improvements?

Click to send email feedback:

mailto:iea@us.ibm.com?subject=Feedback_about_WASV8_JDBCProviderMgmt.ppt

This module is also available in PDF format at: [../WASV8_JDBCProviderMgmt.pdf](..WASV8_JDBCProviderMgmt.pdf)

You can help improve the quality of IBM Education Assistant content by providing feedback.



Trademarks, disclaimer, and copyright information

IBM, the IBM logo, ibm.com, and WebSphere are trademarks or registered trademarks of International Business Machines Corp., registered in many jurisdictions worldwide. Other product and service names might be trademarks of IBM or other companies. A current list of other IBM trademarks is available on the Web at "[Copyright and trademark information](http://www.ibm.com/legal/copytrade.shtml)" at <http://www.ibm.com/legal/copytrade.shtml>

THE INFORMATION CONTAINED IN THIS PRESENTATION IS PROVIDED FOR INFORMATIONAL PURPOSES ONLY. Linux is a registered trademark of Linus Torvalds in the United States, other countries, or both.

THE INFORMATION CONTAINED IN THIS PRESENTATION IS PROVIDED FOR INFORMATIONAL PURPOSES ONLY. WHILE EFFORTS WERE MADE TO VERIFY THE COMPLETENESS AND ACCURACY OF THE INFORMATION CONTAINED IN THIS PRESENTATION, IT IS PROVIDED "AS IS" WITHOUT WARRANTY OF ANY KIND, EXPRESS OR IMPLIED. IN ADDITION, THIS INFORMATION IS BASED ON IBM'S CURRENT PRODUCT PLANS AND STRATEGY, WHICH ARE SUBJECT TO CHANGE BY IBM WITHOUT NOTICE. IBM SHALL NOT BE RESPONSIBLE FOR ANY DAMAGES ARISING OUT OF THE USE OF, OR OTHERWISE RELATED TO, THIS PRESENTATION OR ANY OTHER DOCUMENTATION. NOTHING CONTAINED IN THIS PRESENTATION IS INTENDED TO, NOR SHALL HAVE THE EFFECT OF, CREATING ANY WARRANTIES OR REPRESENTATIONS FROM IBM (OR ITS SUPPLIERS OR LICENSORS), OR ALTERING THE TERMS AND CONDITIONS OF ANY AGREEMENT OR LICENSE GOVERNING THE USE OF IBM PRODUCTS OR SOFTWARE.

© Copyright International Business Machines Corporation 2011. All rights reserved.