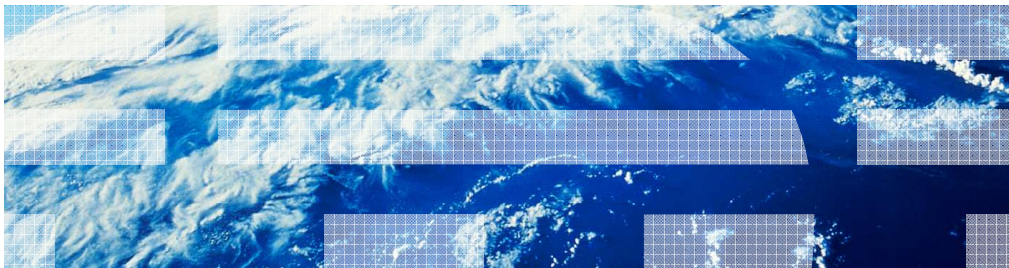


# IBM WebSphere Application Server V8

## Distributed platform installation



This presentation describes the installation of IBM WebSphere Application Server V8.

## Table of contents

- IBM Installation Manager – History and overview
- Install IBM Installation Manager
- Install IBM WebSphere Application Server
- Modify IBM WebSphere Application Server
- Uninstall IBM WebSphere Application Server
- Install WebSphere Application Server silently
- Install WebSphere Application Server on IBM i

This presentation introduces the WebSphere Application Server V8 Installation. It covers the topics shown here.

---

## IBM Installation Manager – History and overview

IBM Installation Manager was originally introduced to support the installation of IBM Rational desktop products and it has currently been adopted by many products across IBM. A single instance of IBM Installation Manager can manage the product life cycle for any IBM Installation Manager based product from WebSphere, Rational, Lotus and any other brand within IBM.

The IBM Installation Manager full product installation life cycle management includes product installation, adding or removing features, uninstallation and full service management which includes installing and uninstalling ifixes and applying and rolling back service fix packs.

IBM Installation Manager provides a full graphical user interface for distributed platforms, excluding z/OS and IBM i operation systems. It also provides a command line utility for all platforms to perform install operations silently.

## IBM Installation Manager - Repository

IBM Installation Manager repository contains one or multiple product offerings that have both meta-data and actual payload for the offerings.

The offering metadata describes such aspects of the offering as: name, version, supported platforms, required and optional features and relationships and dependency between offerings and features of offerings.

Normally, an IBM Installation Manager repository contains the full content that is required to install on various platforms, operating systems and so on.

The repository can be referenced by different IBM Installation Managers on different machines and the Repository topologies can be generalized in three categories: a public repository that can be publicly accessible using a URL with an internal connect or local share file system; an enterprise repository that typically exists behind the firewall and is only accessed by multiple machines within the enterprise intranet; and a local repository that is used by a single user and not shared with others.

There are tools available to copy offerings from one repository to another. For example, IBM Package Utility, or file transfer tools from other vendors.

Since the repository contains both binary code and text-based xml files, it must be transferred in binary mode to prevent any conversion when using file transfer tools.



## IBM WebSphere Application Server product packages

- IBM WebSphere Application Server V8.0 has multiple product offering packages.
- These product packages are packaged in the product DVD media and available on the IBM Passport Advantage site.
- IBM Installation Manager V1.4.3 or later is required to install IBM WebSphere Application Server V8.0.
- Same product offering package can be used to install on any supported distributed platforms.

IBM WebSphere Application Server Version 8.0 products contains multiple offering packages. For example Application Server ND, Base, Express or the IBM HTTP Server is a separate offering.

These offering packages are also available for download and to be installed directly from the IBM Passport Advantage site. User must have a valid Passport Advantage user ID and password with entitlement to IBM WebSphere Application Server Version 8.0.

All IBM WebSphere Application Server offerings must be installed using an IBM Installation Manager Version 1.4.3 or later.

Unlike previous version of WebSphere Application Server, each offering contains complete program binary and can be installed on any supported distributed platforms. There are no separate 32-bit and 64-bit Application Server installable packages.



## IBM WebSphere Application Server GUI installation flow

- Install IBM Installation Manager
- Install IBM WebSphere Application Server Network Deployment
- Modify (add or remove) optional features
- Uninstall IBM WebSphere Application Server Network Deployment

The product DVD media includes a launchpad program which can be used to install IBM Installation Manager Version 1.4.3 and IBM WebSphere Application Server Version 8.0.

After IBM Installation Manager is installed, it can be used to install IBM WebSphere Application Server Network Deployment, add or remove additional optional features to the IBM WebSphere Application Server Network Deployment installation, or uninstall the product.



Section

## ***Install IBM Installation Manager***

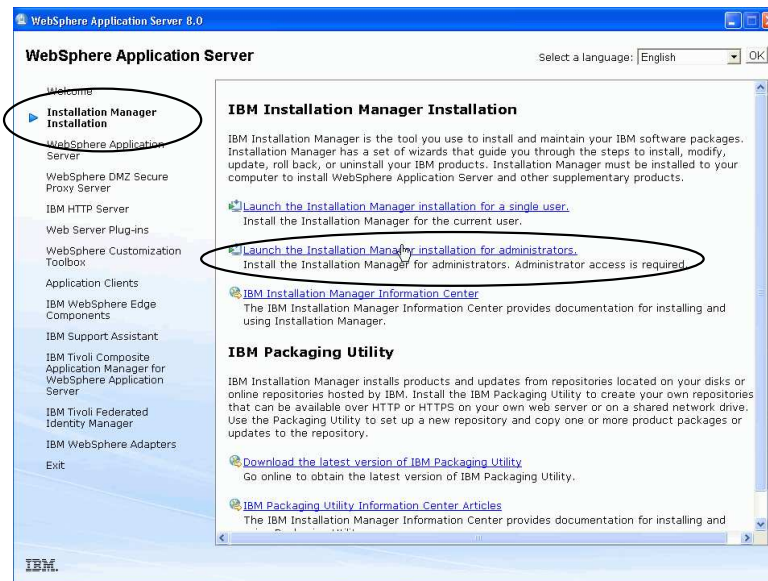
7

Distributed platform installation

© 2011 IBM Corporation

The next session describes how to install IBM Installation Manager using the launchpad program in the product DVD media.

## Install IBM Installation Manager (1 of 4)



Start the launchpad program from the product DVD media. Select Installation Manager Installation. Click the link to launch Installation Manager installation for Administrator.

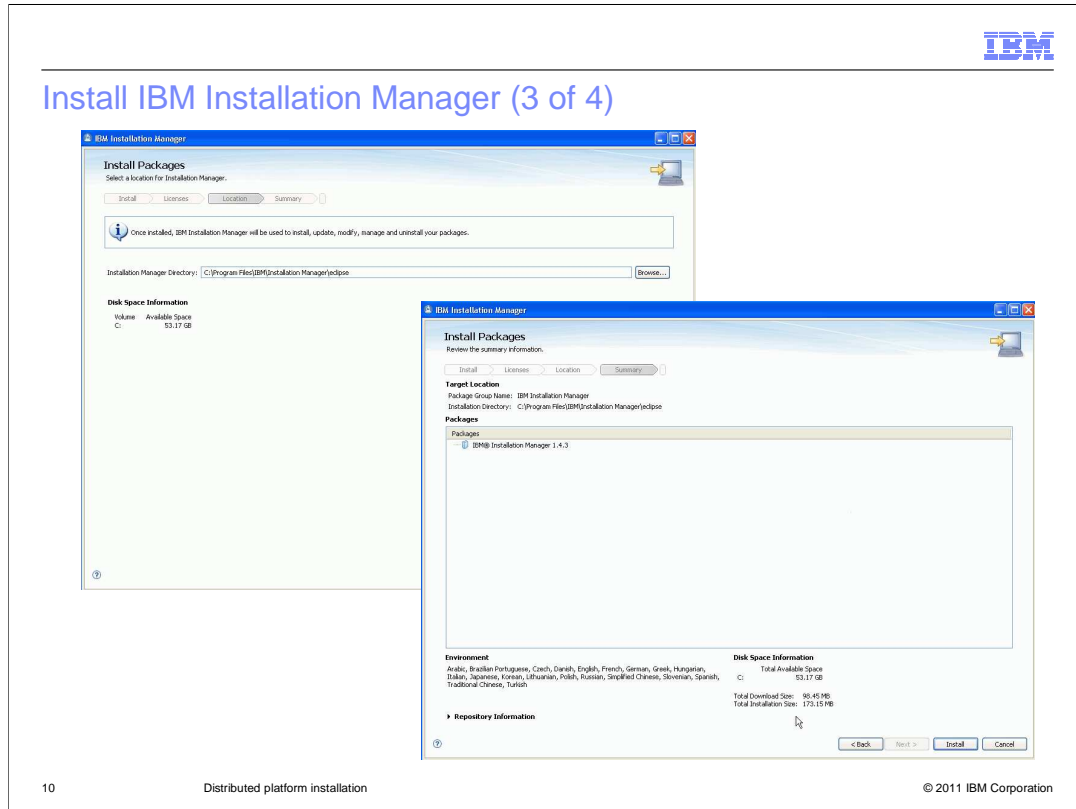


## Install IBM Installation Manager (2 of 4)

9 Distributed platform installation © 2011 IBM Corporation

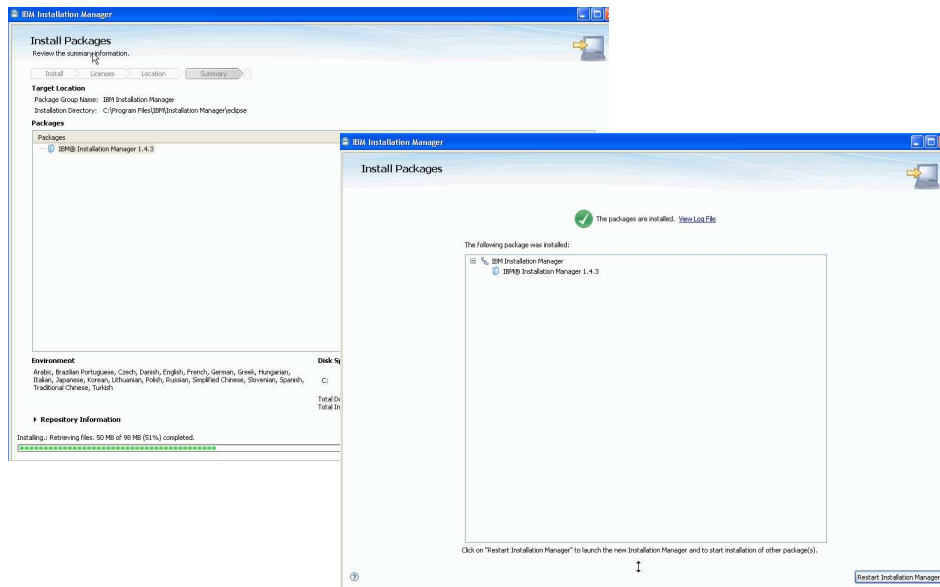
Following the Installation Manager install wizard panel instructions, and read and accept the license agreement to proceed with the installation.

## Install IBM Installation Manager (3 of 4)



Choose the default install location or a specific new one. After reviewing the installation summary panel, click Install to continue with the installation.

## Install IBM Installation Manager (4 of 4)



11

Distributed platform installation

© 2011 IBM Corporation

After the installation is completed, click the Restart Installation Manager to exit the installation wizard and re-start the newly IBM installed Installation Manager.



Section

## ***Install WebSphere Application Server***

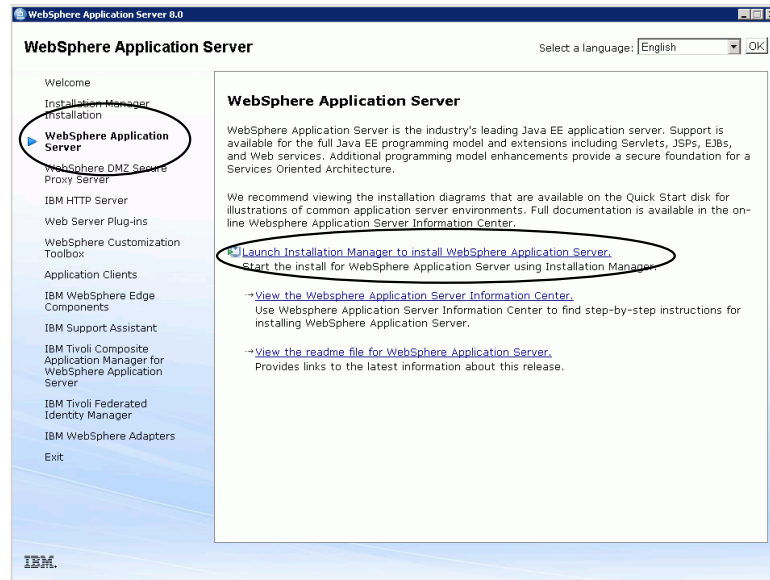
12

Distributed platform installation

© 2011 IBM Corporation

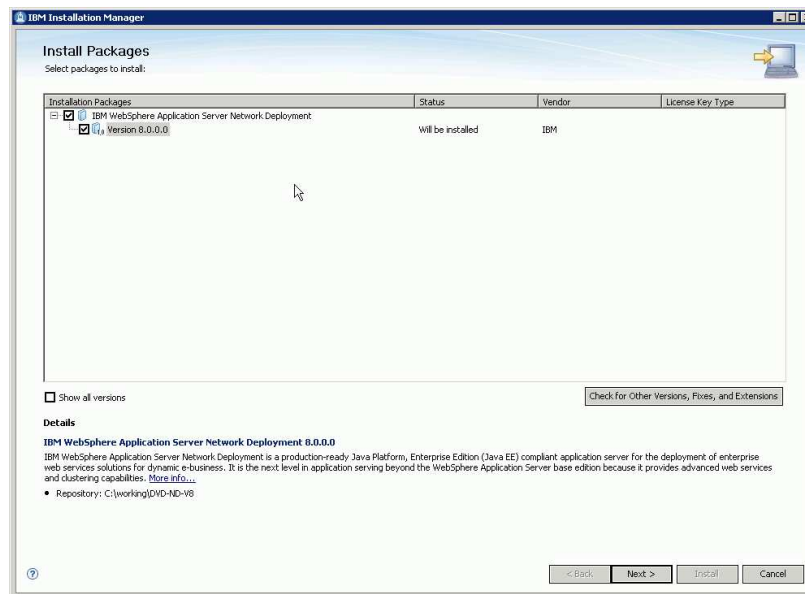
The next session describes how to install a WebSphere Application Server Network Deployment using the launchpad program in the product DVD media.

## Install IBM WebSphere Application Server (1 of 12)



Start the launchpad program from the product DVD media again. Select WebSphere Application Server. Click the link to launch Installation Manager to install WebSphere Application Server.

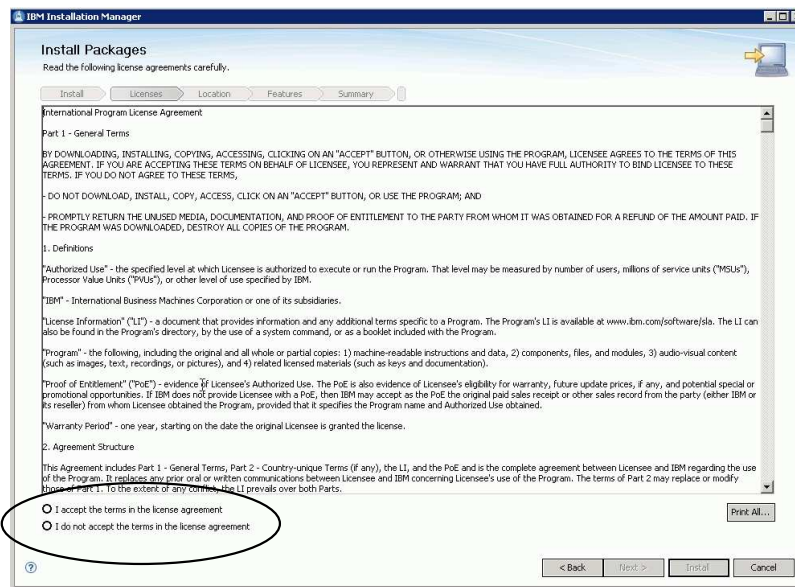
## Install IBM WebSphere Application Server (2 of 12)



IBM WebSphere Application Server Network Deployment installation wizard comes up with IBM WebSphere Application Server Version 8.0 offering package pre-selected.

Click Next to proceed the installation.

## Install IBM WebSphere Application Server (3 of 12)



15

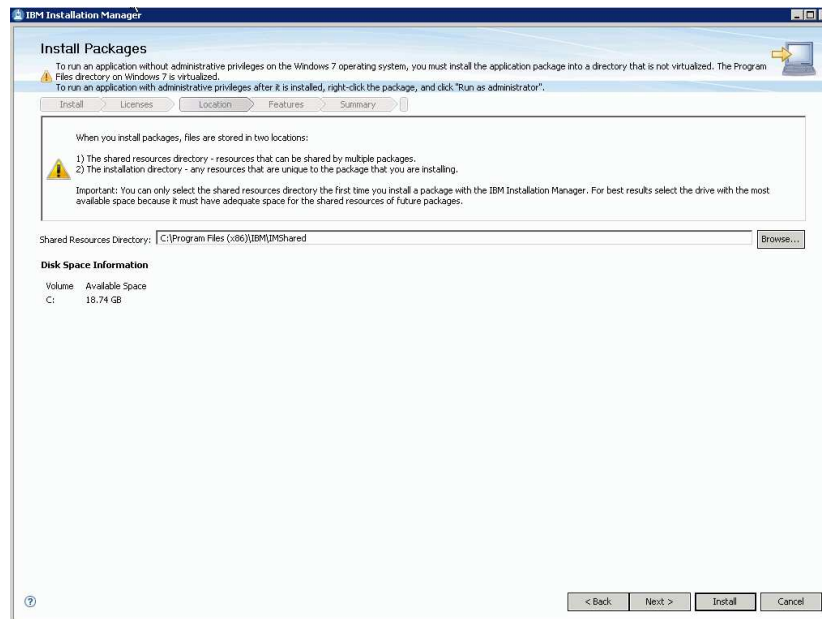
Distributed platform installation

© 2011 IBM Corporation

The next wizard panel shows the license agreement.

After reviewing the license agreement, select the I agree radio button and click Next to proceed.

## Install IBM WebSphere Application Server (4 of 12)

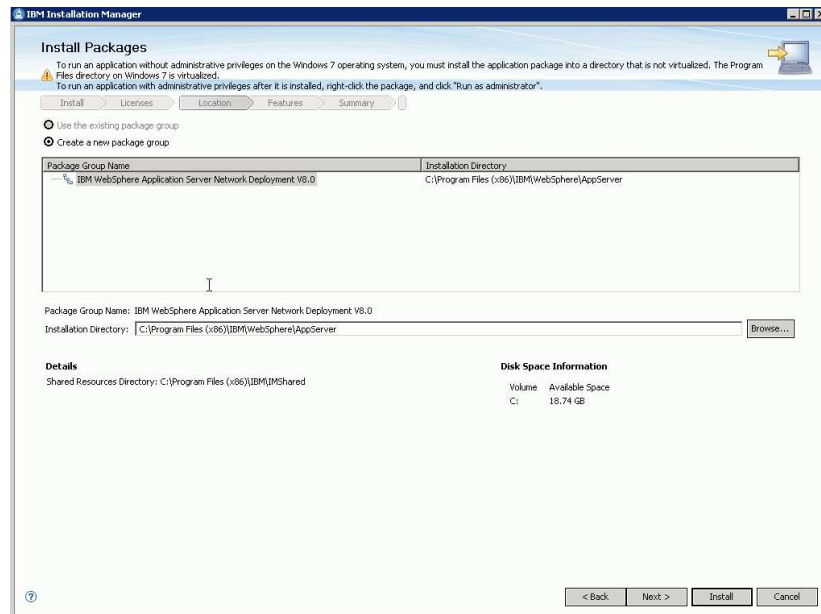


When this is the first offering installed by the IBM Installation Manager on the system, a share resource location is required.

Once this location is set, the subsequent use of IBM Installation Manager always uses this location without asking again.

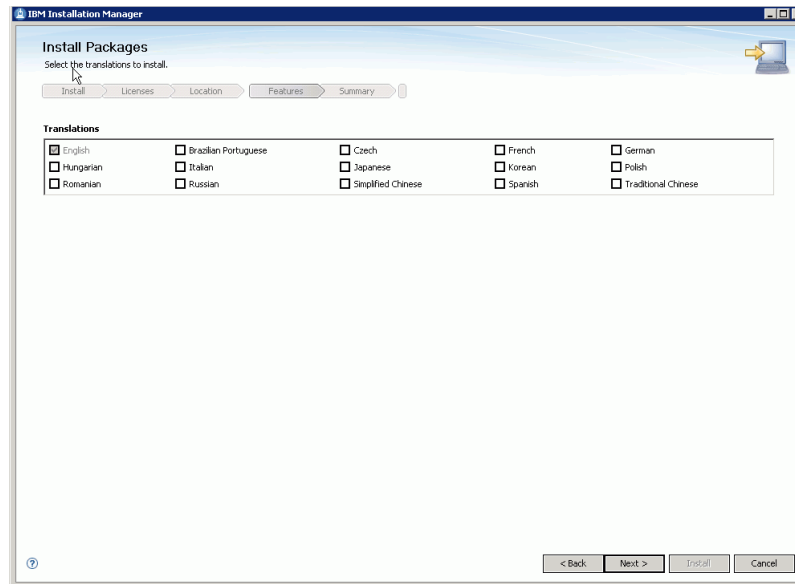


## Install IBM WebSphere Application Server (5 of 12)



Since this is a new installation, accept the default "Create a new package group".  
 Change the default install location if needed and click Next to proceed

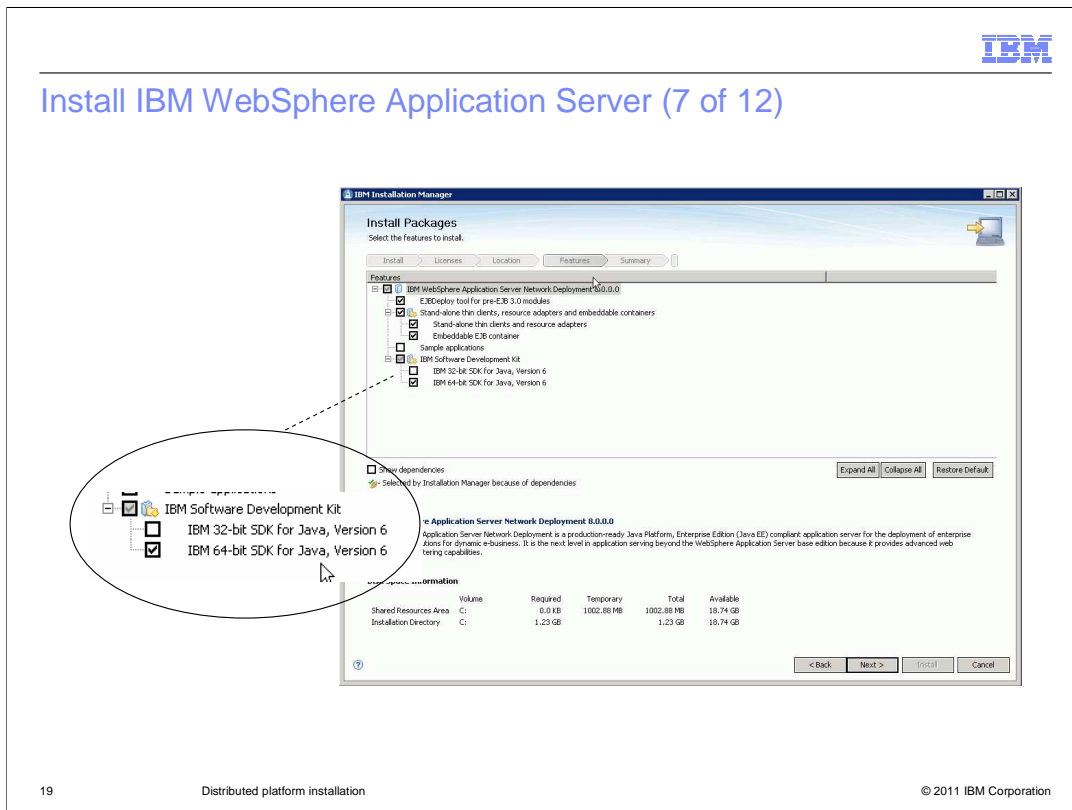
## Install IBM WebSphere Application Server (6 of 12)



In Version 8.0, a choice of individual language packs for the WebSphere Application Server runtime environment and administrative console is available.

Select additional language pack option and click Next to proceed

## Install IBM WebSphere Application Server (7 of 12)



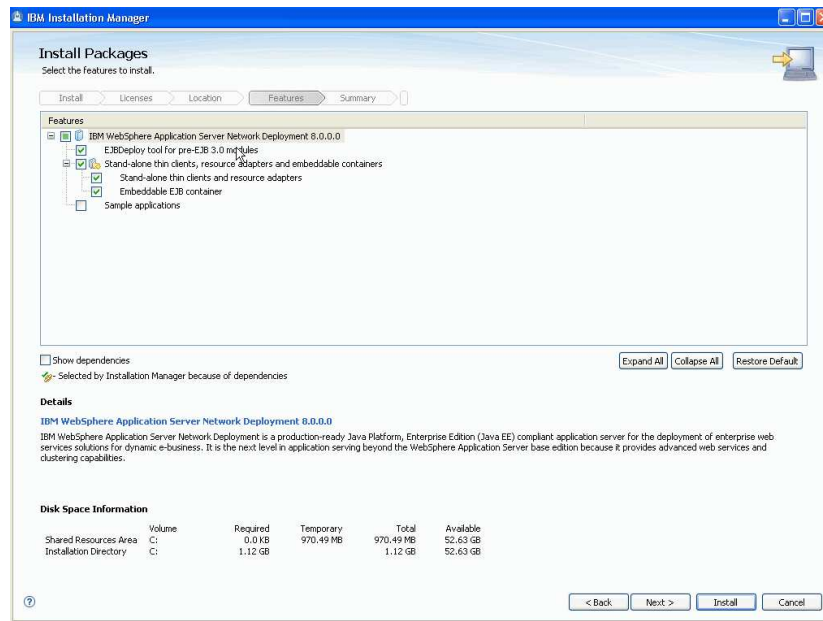
In this feature selection panel, the SDK Software Development Kit feature only shows up when installing on a 64-bit operating system. Either IBM 32-bit SDK Java 6.0 or IBM 64-bit SDK Java 6.0 feature must be chosen. Once this feature is installed, it cannot be modified again.

If the installation is on a 32-bit operating system, this feature choice between IBM 32-bit SDK Java 6.0 or IBM 64-bit SDK Java 6.0 is not available and the installation will automatically default to the IBM 32-bit SDK Java 6.0.

In the previous version of WebSphere Application Server, there are separate installable packages for 32-bit WebSphere Application Server installable images and 64-bit WebSphere Application Server installable images. In version 8.0, they have been combined into one single installable package.

By choosing the IBM 32-bit SDK Java 6.0 feature, it is equivalent to install a 32-bit WebSphere Application Server on a 64-bit operating system.

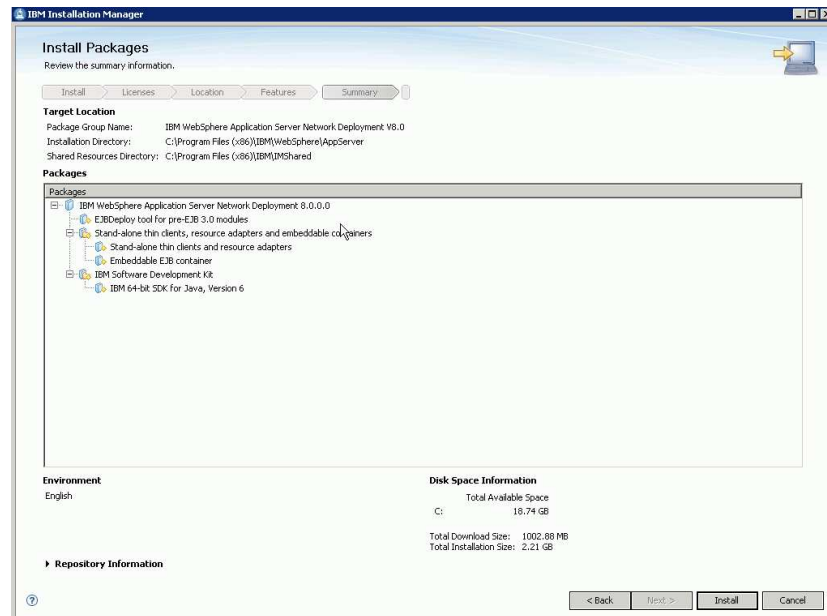
## Install IBM WebSphere Application Server (8 of 12)



This is the feature panel installing on a 32-bit operating system. Notice that there is no SDK Software Development Kit feature in this panel.

It will default to install the 32-bit WebSphere Application Server.

## Install IBM WebSphere Application Server (9 of 12)



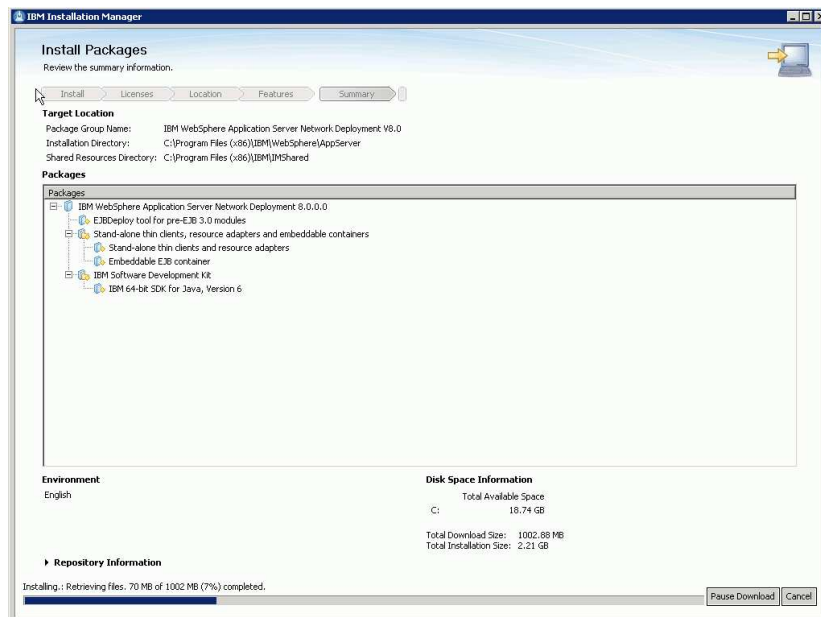
21

Distributed platform installation

© 2011 IBM Corporation

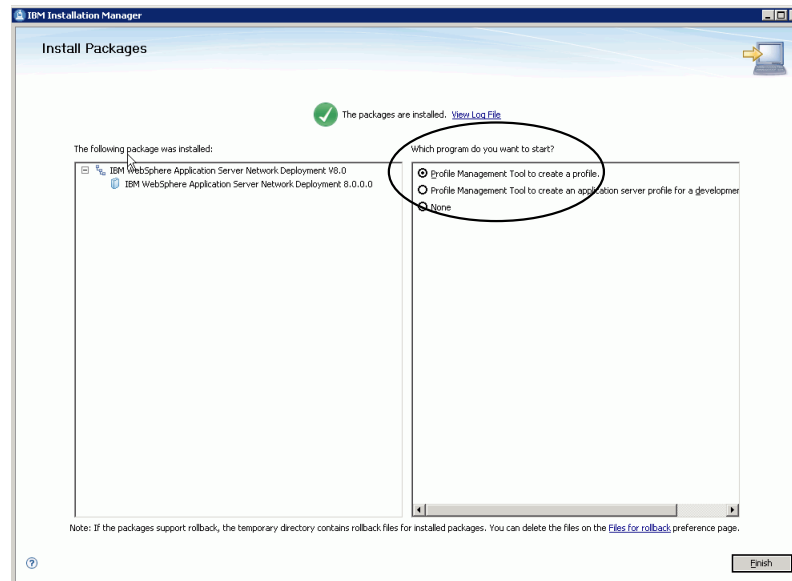
Review the installation location, installing features and the language pack option in the installation summary panel before clicking the Install button to start the installation.

## Install IBM WebSphere Application Server (10 of 12)



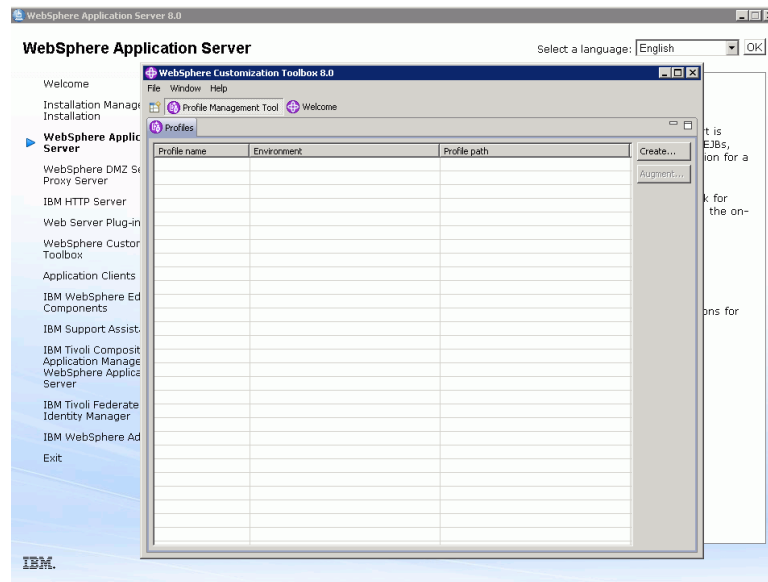
During the installation, a progress status bar is displayed. The installation can be paused or canceled by clicking the buttons.

## Install IBM WebSphere Application Server (11 of 12)



When the installation completes, an installation status is displayed on the top of the panel, and the installation log file can be viewed by clicking the [View Log File](#) link. In Version 8.0, product installation is separated from product configuration. The installation of WebSphere Application Server does not automatically create a server profile instance. However, there is an option at the final panel of the installation wizard to start the Profile Management Tool application.

## Install IBM WebSphere Application Server (12 of 12)



24

Distributed platform installation

© 2011 IBM Corporation

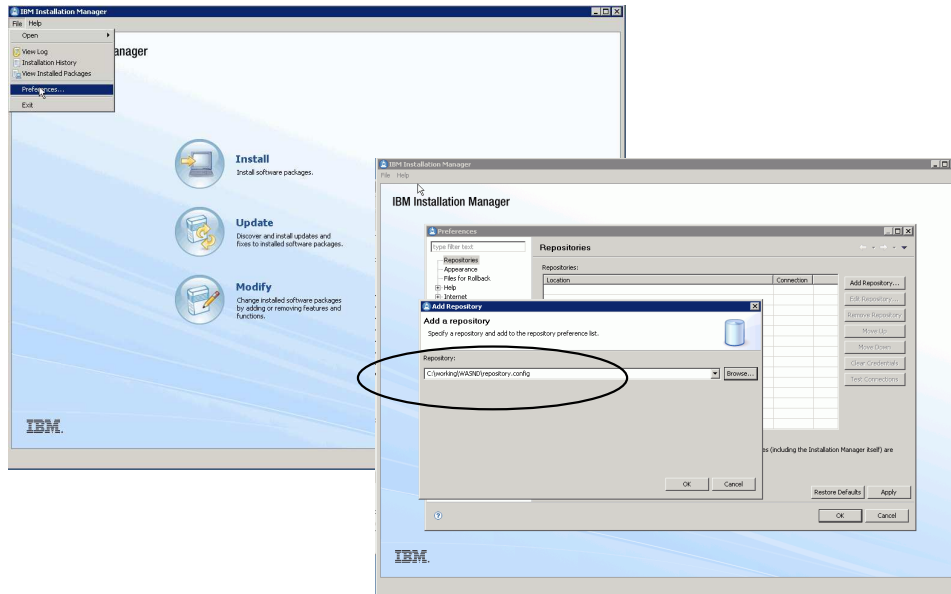
Upon the closing of the Installation Manager install wizard, the Profile Management Tool is launched. Continue the server profile creation using the Profile Management Tool.



## ***Modify WebSphere Application Server***

The next session describes how to modify WebSphere Application Server Network Deployment installation using IBM Installation Manager.

## Modify (add or remove) optional features (1 of 8)



26

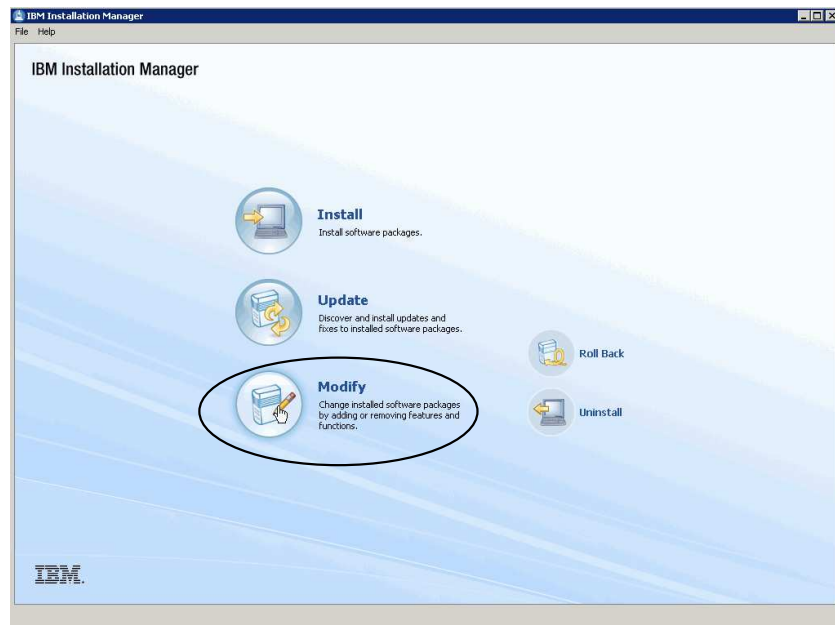
Distributed platform installation

© 2011 IBM Corporation

Start IBM Installation Manager that is already installed on the system.

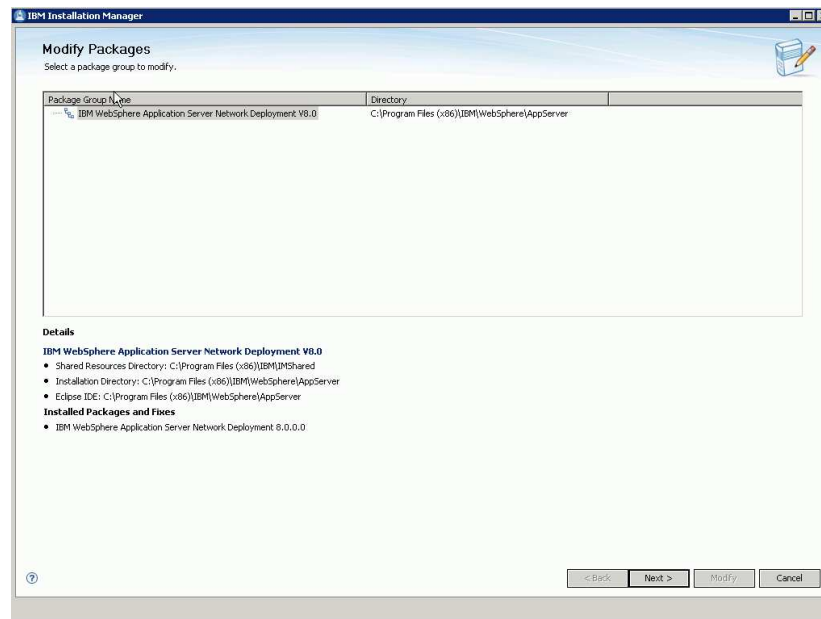
Add the URL for the IBM WebSphere Application Server Network Deployment product offering repository to IBM Installation Manager

## Modify (add or remove) optional features (2 of 8)



Click Modify on the IBM Installation Manager welcome panel.

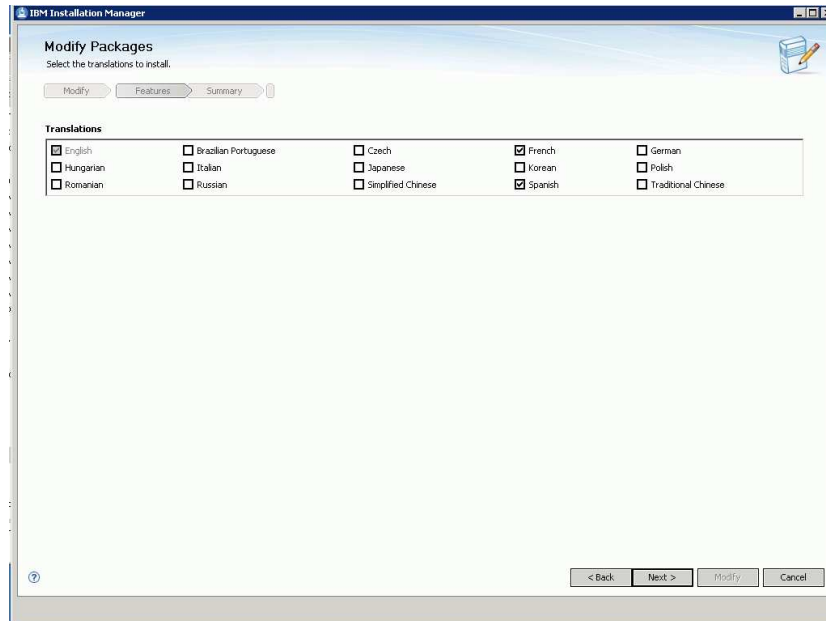
## Modify (add or remove) optional features (3 of 8)



Select the Package Group to modify and click Next to proceed.

There is more than one choice if there are multiple installations of WebSphere Application Server on the system. Each package group is corresponding to an installation location.

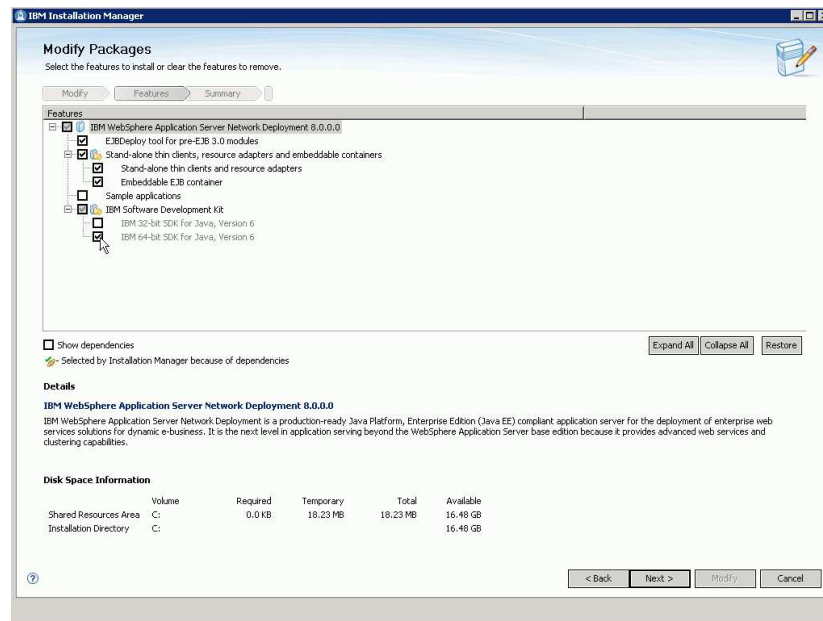
## Modify (add or remove) optional features (4 of 8)



Select new optional language to be installed or deselect already installed optional language to uninstall

Click Next to proceed

## Modify (add or remove) optional features (5 of 8)



30

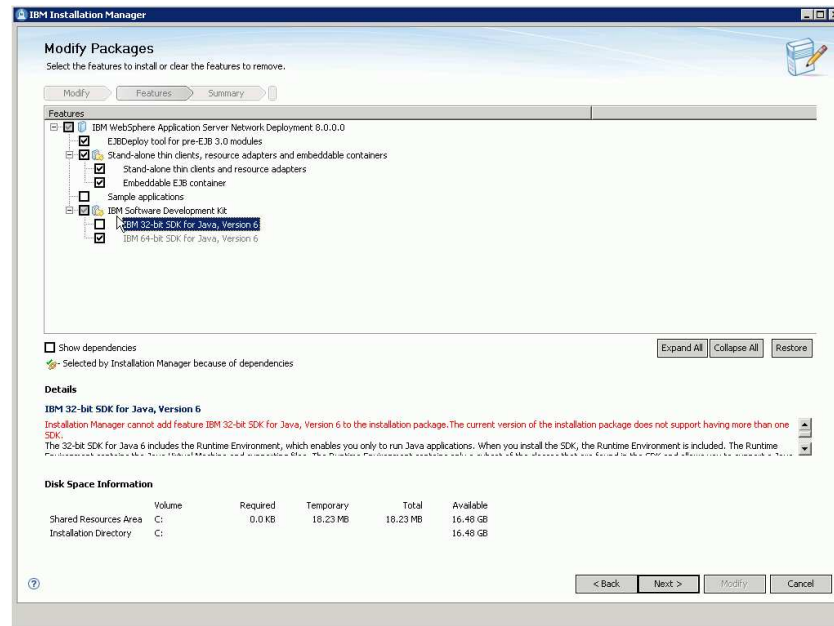
Distributed platform installation

© 2011 IBM Corporation

Select or deselect the optional features to be installed or uninstalled

Click Next to proceed

## Modify (add or remove) optional features (6 of 8)



31

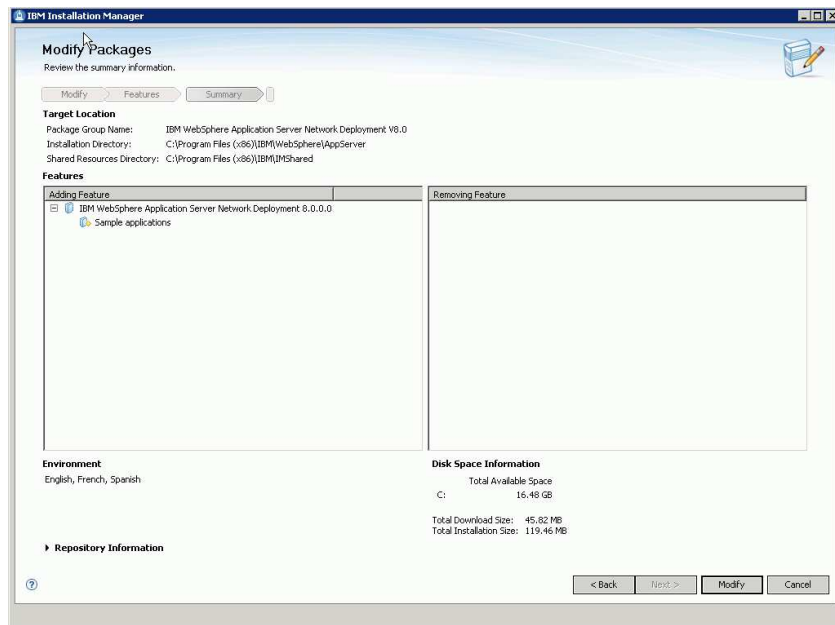
Distributed platform installation

© 2011 IBM Corporation

On a 64-bit operating system, the choice of IBM Software Development Kit feature is available.

Changing the IBM Software Development Kit feature during modify flow is not allowed or an error message will be displayed on the panel.

## Modify (add or remove) optional features (7 of 8)



32

Distributed platform installation

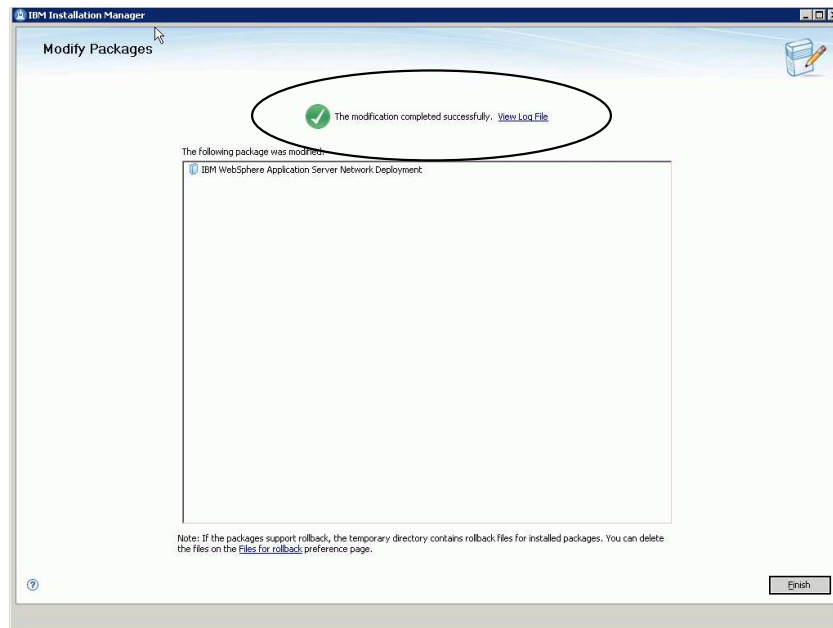
© 2011 IBM Corporation

Review the Modify summary panel

Click Modify to start the add/remove feature operation



## Modify (add or remove) optional features (8 of 8)



33

Distributed platform installation

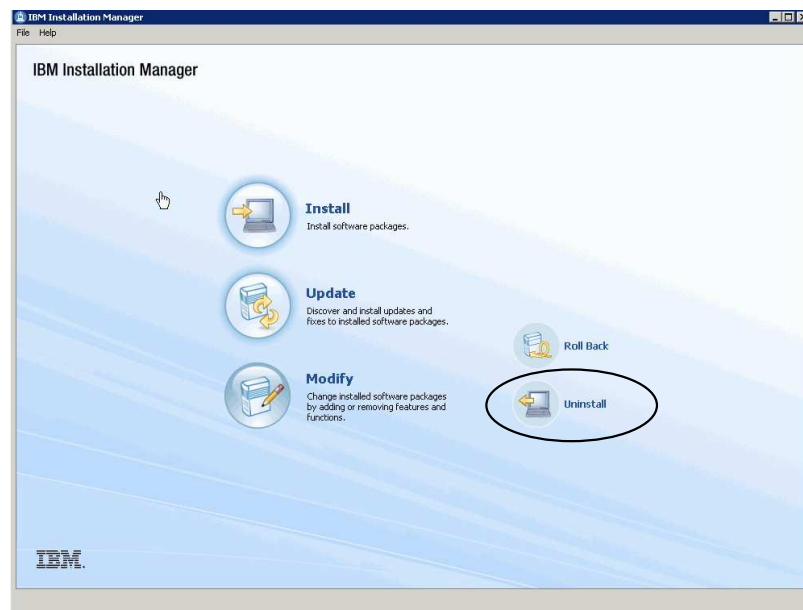
© 2011 IBM Corporation

When the modification completes, an installation status is displayed on the final panel.  
Click the [View Log File](#) link to review the log file.

## ***Uninstall WebSphere Application Server***

The next session describes how to uninstall WebSphere Application Server Network Deployment installation using IBM Installation Manager.

## Uninstall IBM WebSphere Application Server (1 of 4)



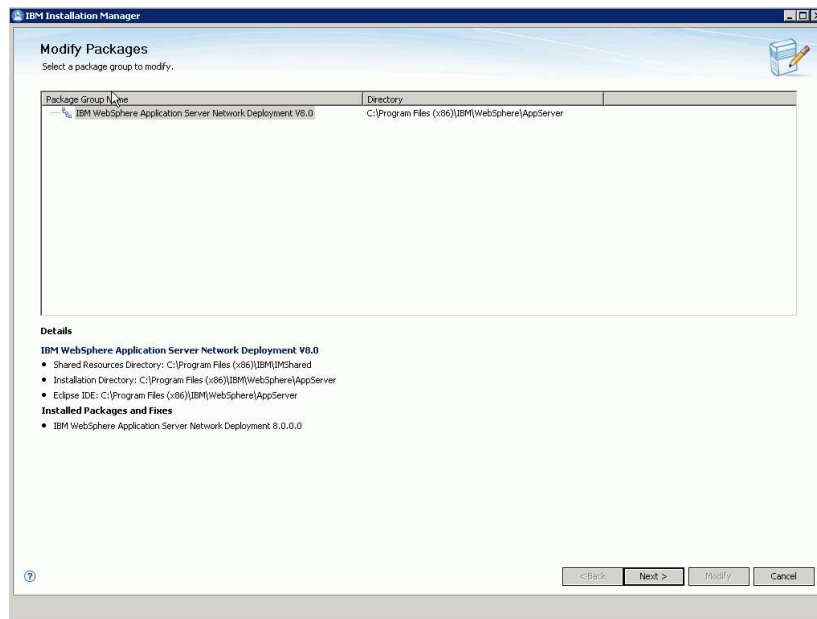
35

Distributed platform installation

© 2011 IBM Corporation

Start IBM Installation Manager that is installed on the system and click Uninstall in the IBM Installation Manager welcome panel to uninstall WebSphere Application Server.

## Uninstall IBM WebSphere Application Server (2 of 4)



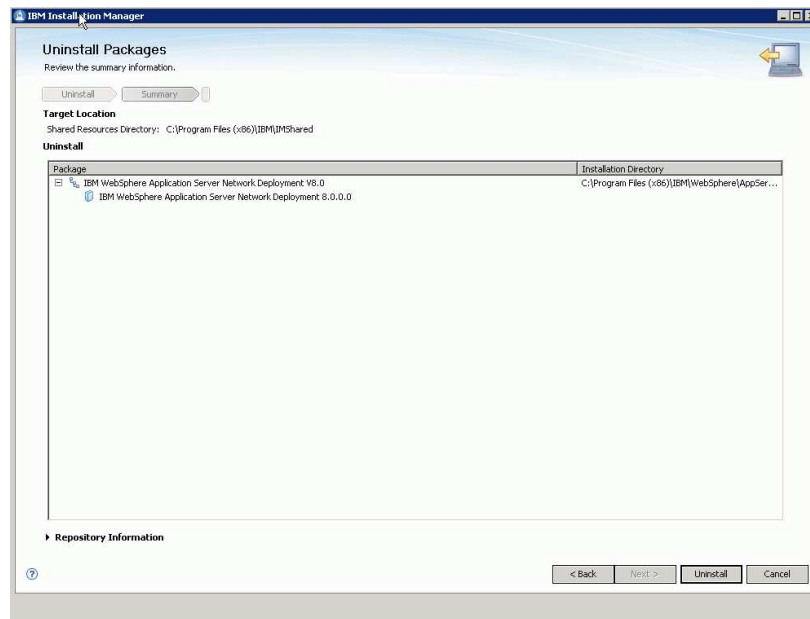
36

Distributed platform installation

© 2011 IBM Corporation

Select the Package Group to modify and click Next to proceed

## Uninstall IBM WebSphere Application Server (3 of 4)



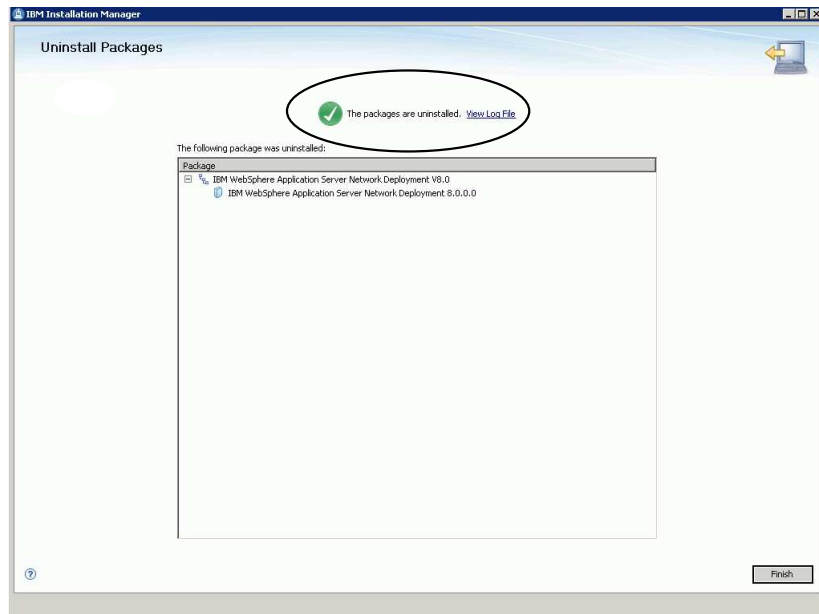
37

Distributed platform installation

© 2011 IBM Corporation

Review the information on the Uninstall summary panel and click Uninstall to start the uninstallation

## Uninstall IBM WebSphere Application Server (4 of 4)



When the uninstallation is complete, the status is displayed on the final panel. Click the [View Log File](#) link to review the log file.

## ***Installing WebSphere Application Server silently***

The next session describes how to install WebSphere Application Server Network Deployment silently using IBM Installation Manager.

## Install WebSphere Application Server silently

- IBM Installation Manager also provides command line interface.
- The command line interface can be used for basic install, modify, update, and uninstall operations.
- IBM Installation Manager also has the capability to record an installation response file.
- The install operations can be rerun with the command line interface and the installation response file.

IBM Installation Manager also provides a command line interface, which can be used for installation automation, and it is very useful when installing WebSphere Application Server in many machines within your enterprise.

IBM Installation Manager has a command line interface which can be used to perform basic install, modify, update, and uninstall operations silently.

IBM Installation Manager also has the capability to record the operation to an installation response file in its GUI mode, and there are the sample response files provided in the WebSphere Application Server Information Center. The sample response files are documented with instructions on how to customize it.

The Installation Manager command line interface is documented in the IBM Installation Manager Information Center (See the link in the References section)



## IBM WebSphere Application Server sample installation response file

The screenshot displays the IBM WebSphere Application Server Information Center interface. The left sidebar shows a navigation tree with 'Network Deployment (Distributed operating systems), Version 8.0' selected. The main content area shows a page titled 'Network Deployment (Distributed operating systems), Version 8.0' with a note about post-installation instructions and an example of a response file.

**Note:** The program might write important post-installation instructions to standard output. Read the [IBM Installation Manager Information Center](#) for more information.

**Example**

The following is an example of a response file for silently installing the product.

```
<?xml version="1.0" encoding="UTF-8"?>
<!-- ##### Copyright #####
# Licensed Materials - Property of IBM (c) Copyright IBM Corp. 2011.
# All Rights Reserved. US Government Users Restricted Rights-Use, duplication
# or disclosure restricted by GSA AWP Schedule Contract with IBM Corp.
##### -->
<!-- ##### Frequently Asked Questions #####
# The latest information about using Installation Manager is
# located in the online Information Center. There you can find
# information about the commands and attributes used in
# silent installation response files.
#
# Installation Manager Information Center can be found at:
# http://publib.boulder.ibm.com/infocenter/install/v1r4/index.jsp
#
# Question 1. How do I record a response file using Installation Manager?
# Answer 1. Start Installation Manager from the command line with the
# record parameter and it will generate a response file containing actions
# it performed, repositories it used, and its preferences settings.
# Optionally use the -skipInstall parameter if you do not want the product
# to be installed to the machine. Specify a new agentDataLocation location
# value when doing a new installation. Do not use an existing
# agentDataLocation for an installation because it might damage the
# installation data and prevent you from modifying, updating, rolling back,
# or uninstalling the installed packages.
#
# Windows: IBMIM -record <responseFile> -skipInstall <agentDataLocation>
# Linux or UNIX: ./IBMIM -record <responseFile> -skipInstall <agentDataLocation>
```

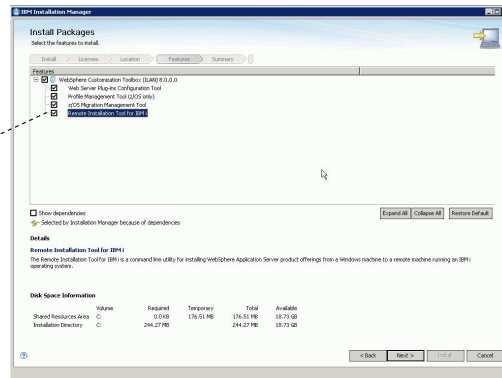
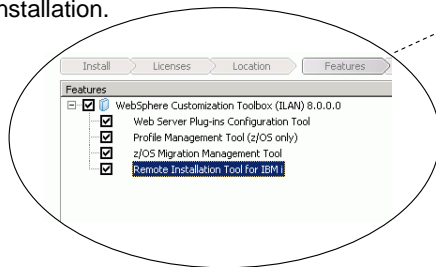
The sample response files are available in the IBM WebSphere Application Server Version 8.0 Information Center. They contain complete documentation on how to customize it to suite any particular installation environment. For example, a different installation location or a choice of optional features.

## ***Install WebSphere Application Server on IBM i***

The next section describes how to install WebSphere Application Server on IBM i using IBM Installation Manager.

## Install WebSphere Application Server on IBM i

- IBM Installation Manager does not support the GUI interface on IBM i system
- All install options must use the Installation Manager command line interface on IBM i system
- A remote installation for IBM i utility application is available and allows remote installation from a Windows machine
- This remote installation utility is available in the Product DVD Media or in the WebSphere Customization Toolbox installation.



43

Distributed platform installation

© 2011 IBM Corporation

Currently, only the IBM Installation Manager command line interface is support on IBM i system. The GUI interface is not supported on IBM i.

All installation operations must use the Installation Manager command line interface on IBM i or using the remote installation for IBM i tool.

A remote installation for IBM i utility application is available and allows remote installation from a Windows machine. This utility application is available in the product DVD media and available in the WebSphere Customization Tool product offering.



## Install WebSphere Application Server on IBM i locally

- Sign on to the IBM i system with a user profile that has \*ALLOBJ and \*SECADM special authorities and start the QShell command environment
- Set environment umask to 022 to avoid files being created with 777 permission setting
- If the system does not have the IBM Installation Manager installed, run this QShell command from the IBM Installation Manager installation image kit

```
== > installc -acceptLicense
```
- The default installation location for IBM Installation Manager is  
/QIBM/ProdData/InstallationManager/eclipse
- Install IBM WebSphere Application Server using IBM Installation Manger command line interface

```
== > tools/imcl -acceptLicense install com.ibm.websphere.ND.v80 -repositories  
<your-local-repository-location>
```
- The default installation location for IBM WebSphere Application Server is  
/QIBM/ProdData/WebSphere/AppServer/V8/ND

44

Distributed platform installation

© 2011 IBM Corporation

Sign on to IBM i system with a user profile with \*ALLOBJ and \*SECADM special authorities and start the QShell command environment. Set the QShell environment umask to 022 to avoid files being created with 777 permission setting. If the system does not have the IBM Installation Manager installed, run the QShell command shown here from the IBM Installation Manager install image kit.

The default installation location for IBM Installation Manager is /QIBM/ProdData/InstallationManager/eclipse.

Install IBM WebSphere Application Server using IBM Installation Manger command line interface. The sample command installs WebSphere Application Server at the default location, /QIBM/ProdData/WebSphere/AppServer/V8/ND

## Summary

- Installed by IBM Installation Manager
- Consistent user installation experience

To summarize, IBM WebSphere Application Server V8 is installed by IBM Installation Manager which is used by many IBM products. It provides a consistent user installation experience with other IBM products.

## ***References***

There are some useful reference links in this section

## References

- IBM WebSphere Application Server V8.0 Information Center  
<http://www.ibm.com/software/webservers/appserv/was/library/v80/>
- IBM Installation Manager Information Center  
<http://publib.boulder.ibm.com/infocenter/install/v1r4/index.jsp>

This slide contains links to IBM WebSphere Application Server V8.0 Information Center and IBM Installation Manager Information Center.

## Feedback

Your feedback is valuable

You can help improve the quality of IBM Education Assistant content to better meet your needs by providing feedback.

- Did you find this module useful?
- Did it help you solve a problem or answer a question?
- Do you have suggestions for improvements?

Click to send email feedback:

[mailto:iea@us.ibm.com?subject=Feedback about WASV8 dist install.ppt](mailto:iea@us.ibm.com?subject=Feedback%20about%20WASV8%20dist%20install.ppt)

This module is also available in PDF format at: [../WASV8\\_dist\\_install.pdf](http://www.ibm.com/.../WASV8_dist_install.pdf)

You can help improve the quality of IBM Education Assistant content by providing feedback.





## Trademarks, disclaimer, and copyright information

IBM, the IBM logo, ibm.com, Express, Lotus, Passport Advantage, Rational, WebSphere, and z/OS are trademarks or registered trademarks of International Business Machines Corp., registered in many jurisdictions worldwide. Other product and service names might be trademarks of IBM or other companies. A current list of other IBM trademarks is available on the web at "[Copyright and trademark information](http://www.ibm.com/legal/copytrade.shtml)" at <http://www.ibm.com/legal/copytrade.shtml>

THE INFORMATION CONTAINED IN THIS PRESENTATION IS PROVIDED FOR INFORMATIONAL PURPOSES ONLY. Java, and all Java-based trademarks and logos are trademarks of Oracle and/or its affiliates.

Other company, product, or service names may be trademarks or service marks of others.

THE INFORMATION CONTAINED IN THIS PRESENTATION IS PROVIDED FOR INFORMATIONAL PURPOSES ONLY. WHILE EFFORTS WERE MADE TO VERIFY THE COMPLETENESS AND ACCURACY OF THE INFORMATION CONTAINED IN THIS PRESENTATION, IT IS PROVIDED "AS IS" WITHOUT WARRANTY OF ANY KIND, EXPRESS OR IMPLIED. IN ADDITION, THIS INFORMATION IS BASED ON IBM'S CURRENT PRODUCT PLANS AND STRATEGY, WHICH ARE SUBJECT TO CHANGE BY IBM WITHOUT NOTICE. IBM SHALL NOT BE RESPONSIBLE FOR ANY DAMAGES ARISING OUT OF THE USE OF, OR OTHERWISE RELATED TO, THIS PRESENTATION OR ANY OTHER DOCUMENTATION. NOTHING CONTAINED IN THIS PRESENTATION IS INTENDED TO, NOR SHALL HAVE THE EFFECT OF, CREATING ANY WARRANTIES OR REPRESENTATIONS FROM IBM (OR ITS SUPPLIERS OR LICENSORS), OR ALTERING THE TERMS AND CONDITIONS OF ANY AGREEMENT OR LICENSE GOVERNING THE USE OF IBM PRODUCTS OR SOFTWARE.

© Copyright International Business Machines Corporation 2011. All rights reserved.