

IBM WebSphere Business Services Fabric 6.2 – Lab exercise

Modeler-Fabric integration

What this exercise is about	1
Lab requirements	1
What you should be able to do	1
Part 1: Start environment	2
What you did in this lab	18

What this exercise is about

This exercise illustrates how to create a Fabric project by using Modeler, WebSphere Integration Developer, and WebSphere Business Services Fabric. First, a dynamic assembler (DA) component is created in Modeler. The component is then imported into WebSphere Integration Developer. The last portion of this unit illustrates how to create a Fabric project with the newly created DA.

Note that this set of labs does not cover the new business user tools introduced in version 6.2

This lab is provided **AS-IS**, with no formal IBM support.

Lab requirements

- Ensure that WebSphere Business Modeler, WebSphere Integration Developer, and WebSphere Business Services Fabric are installed in your local environment.

- Software needed:

WebSphere Business Modeler Advanced version 6.2

WebSphere Integration Developer version 6.2 with WebSphere Process Server test environment

WebSphere Tool Pack with WebSphere Business Fabric Server version 6.2 test environment

WebSphere Monitor Toolkit version 6.2

WebSphere Registry and Repository version 6.1.2 or later

These labs use **username: admin** and **password: admin** to login as administrator for any of the Web consoles. Your environment may use different credential details.

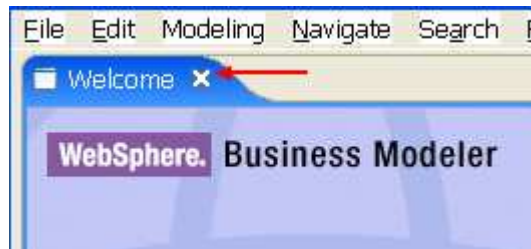
What you should be able to do

After performing this lab, you will have:

- Started WebSphere Business Modeler, WebSphere Integration Developer, and WebSphere Business Services Fabric
- Created a Dynamic Assembler component
- Created a Fabric Project.


Part 1: Start environment


- ___ 1. Start Modeler by selecting Start > All Programs > IBM WebSphere Business Modeler > IBM WebSphere Business Modeler 6.2 > WebSphere Business Modeler 6.2
- ___ 2. Create a new workspace location, for example C:\workspace\modeler and click OK
- ___ 3. Close Welcome screen by clicking the cross in top left corner of the screen



- ___ 4. Create a new Modeler Project. Type Project Name, Process Catalog Name, and Business Process Name as displayed below. Then click the Next button.

- ___ 5. Enter the Data catalog name and Business Item Name as displayed below. Then click Next.

Start Process Modeling 

Start creating the data objects for your business process 

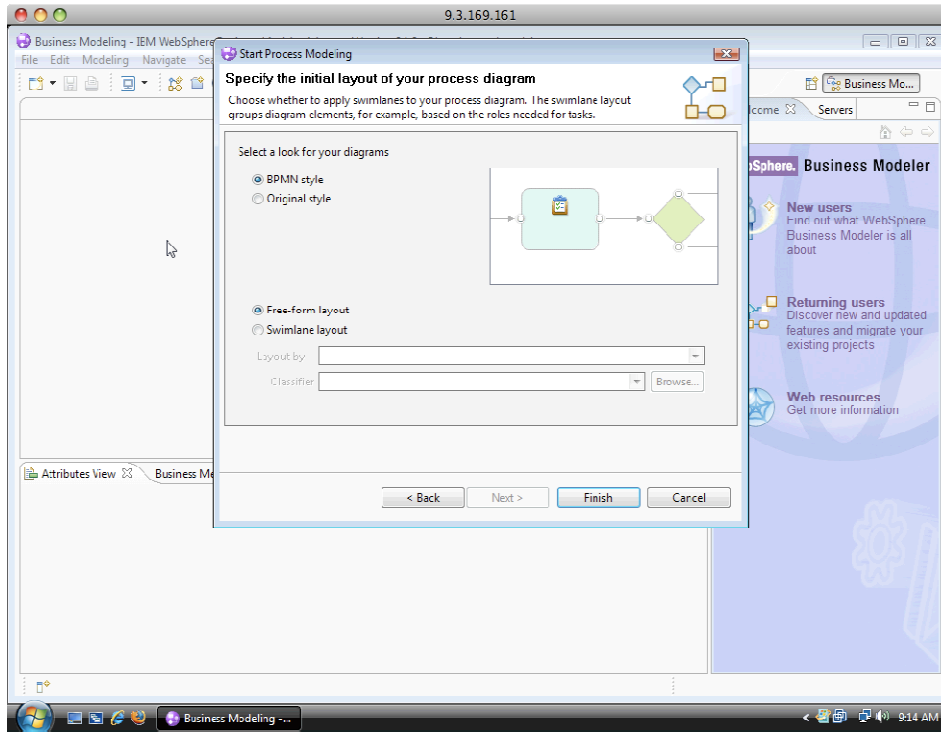
Identify the data catalog (container) for your business items (for example, work products and business documents). Then name the business item that you want to model.

Data catalog name

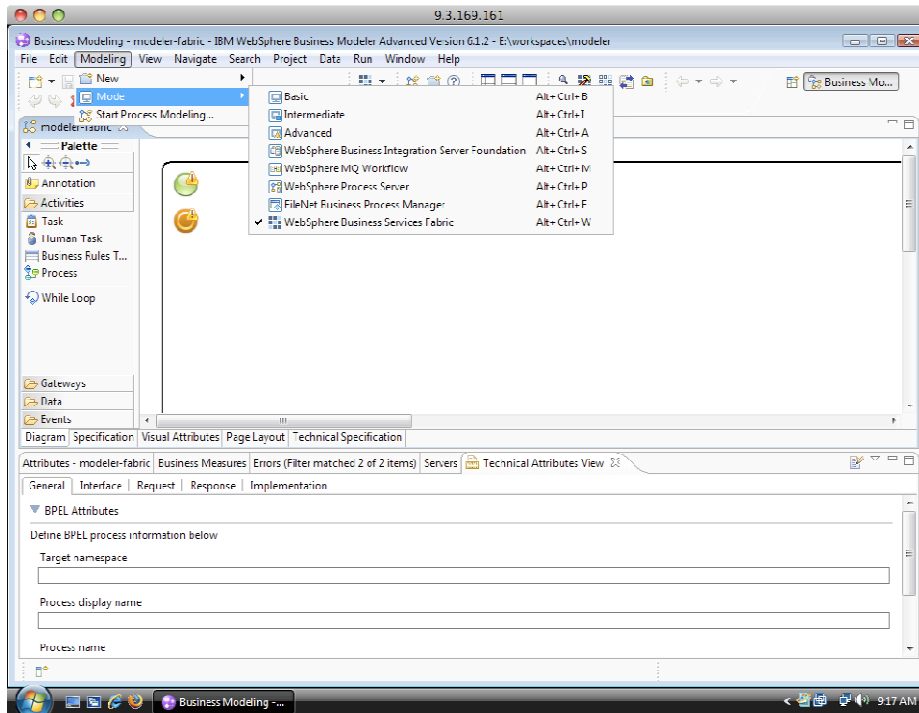
Create business item

Business item name
Example: Customer Order

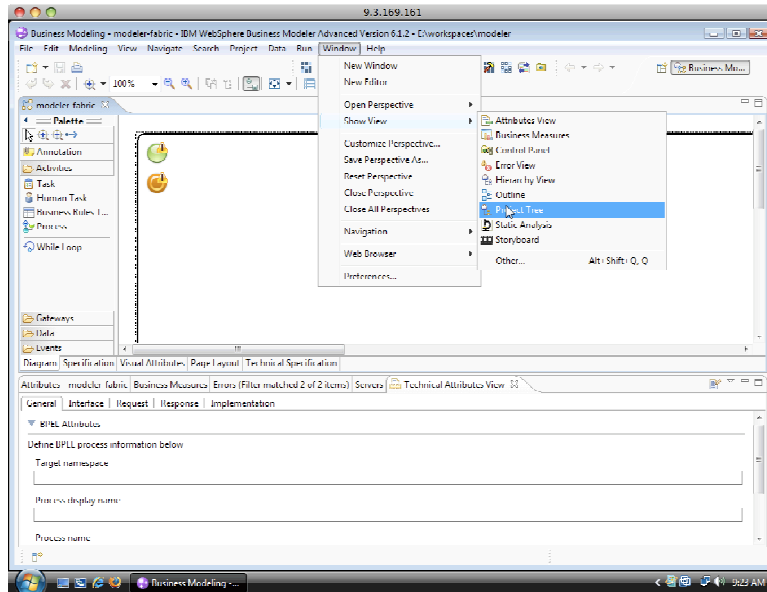
6. Select the default settings and click Finish.



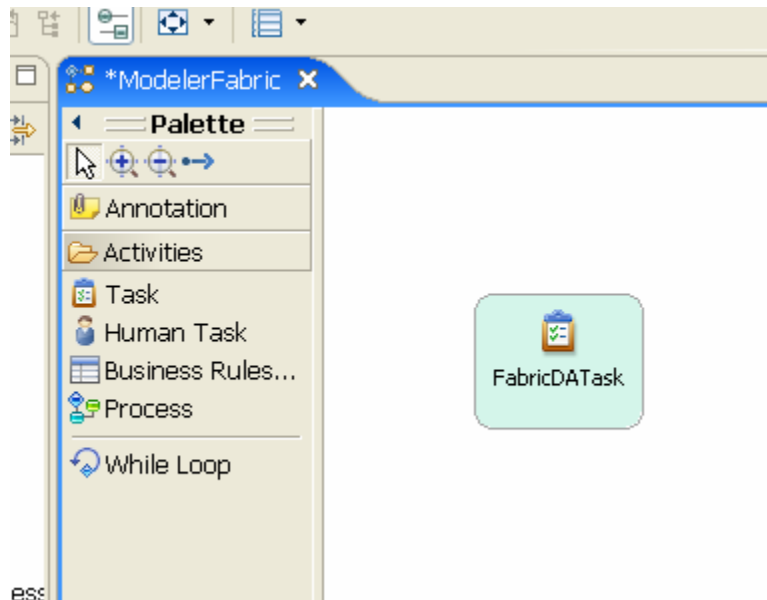
7. Select Mode from the Modeling Drop-down Menu and select the WebSphere Business Service Fabric mode.



- ___ 8. Open the Project Tree view in Modeler from the Show View option in the Window drop down menu



- ___ 9. Place a Task on the Palette and name it FabricDATask



- ___ 10. Configure FabricDATask
- ___ a. Wire the green blob to the DA then wire the DA to the orange blob.
 - ___ b. Click the DA task
 - ___ c. Select the Technical Attributes View Tab.
 - ___ d. Select the Implementation tab.

___ e. Enter the following data:

Component display name	FabricDATask
Component Name	MFDA

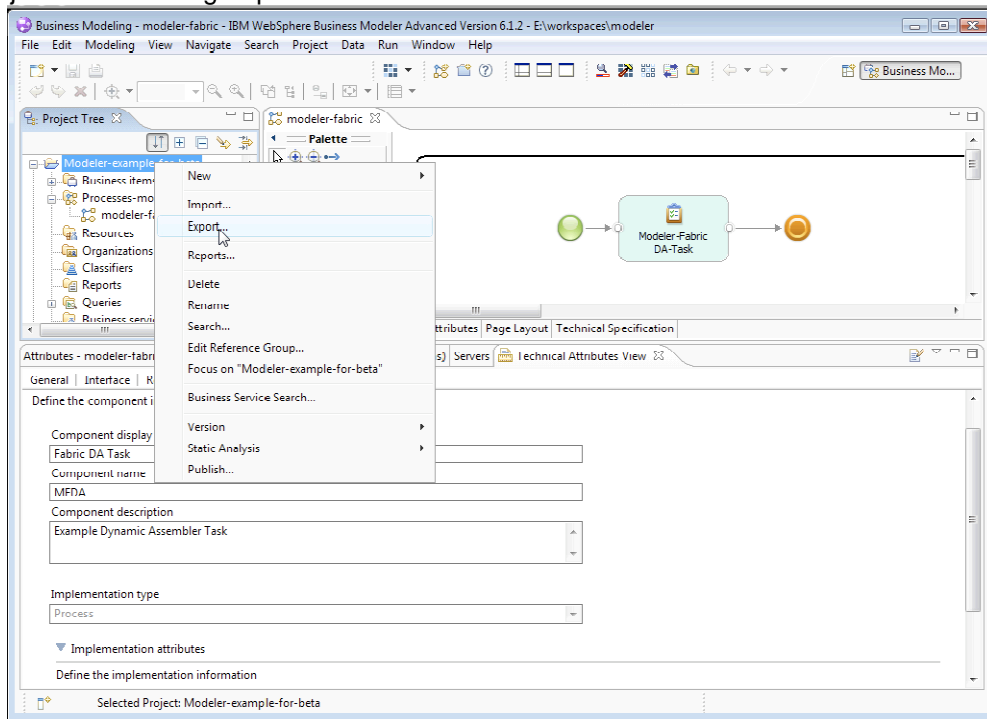
___ f. Select the Dynamic Assembler from the Implementation Type drop down menu.

___ g. Save the project (CTRL-S).

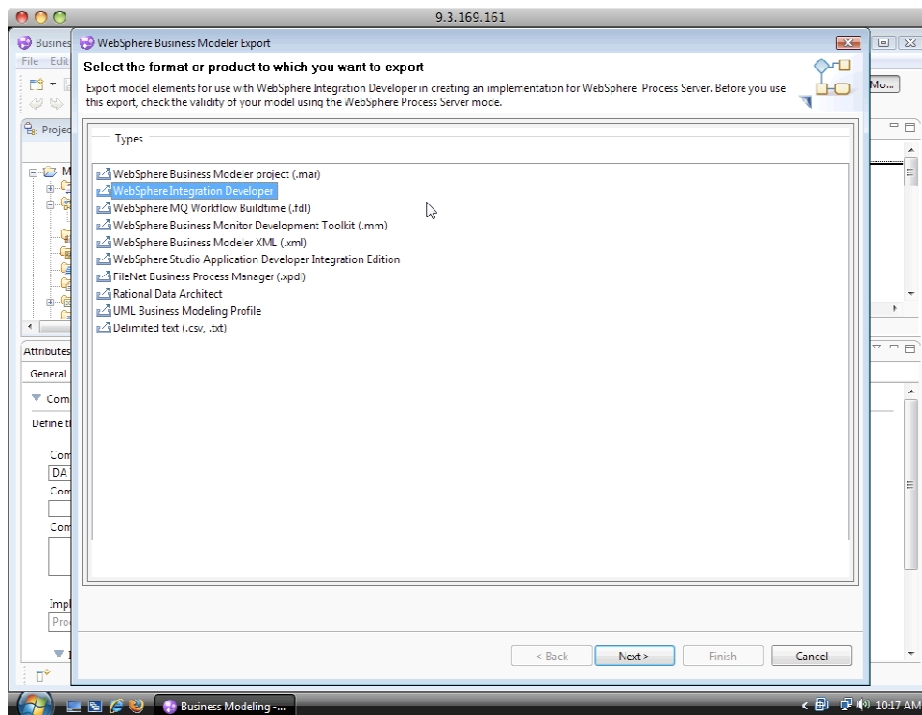
The screenshot displays the IBM Business Architect interface. On the left, the Project Tree shows a hierarchy including ModelerFabric. The main workspace shows a process diagram with a central task named 'FabricDATask' connected to start and end nodes. A Palette on the left lists various modeling elements. Below the workspace, the 'Technical Attributes View' is open, showing the 'Implementation' tab. The 'Component Attributes' section is expanded, displaying the following fields:

- Component display name: FabricDATask
- Component name: MFDA
- Component description: Example Dynamic Assembler Task
- Implementation type: [none]

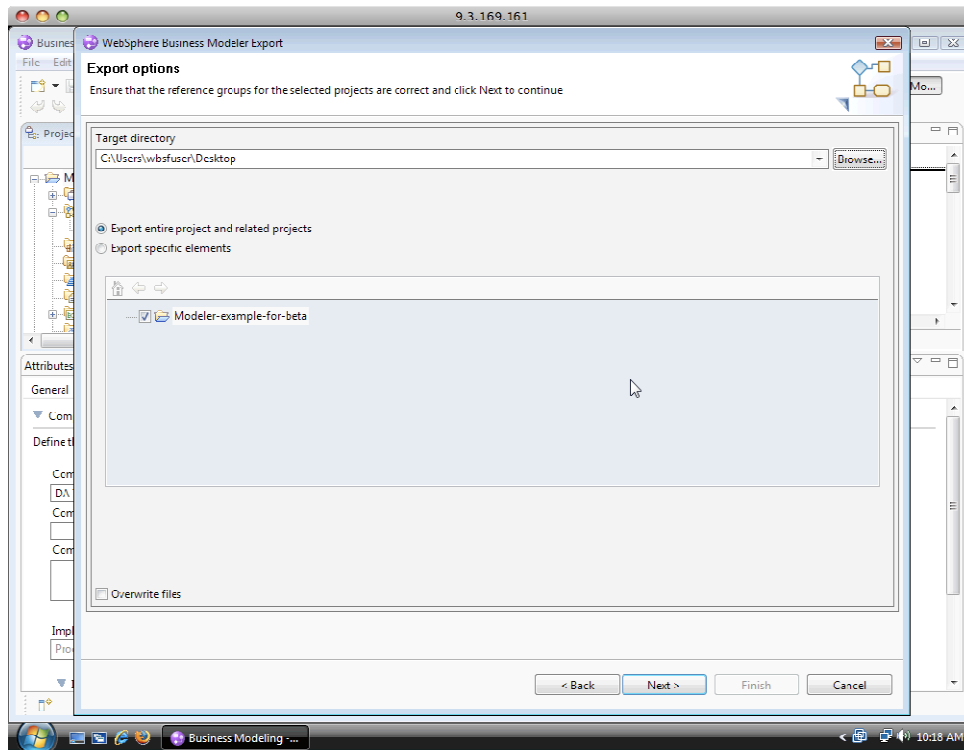
11. Export Modeler Project into WebSphere Integration Developer by right-clicking on the Modeler Project and choosing Export.



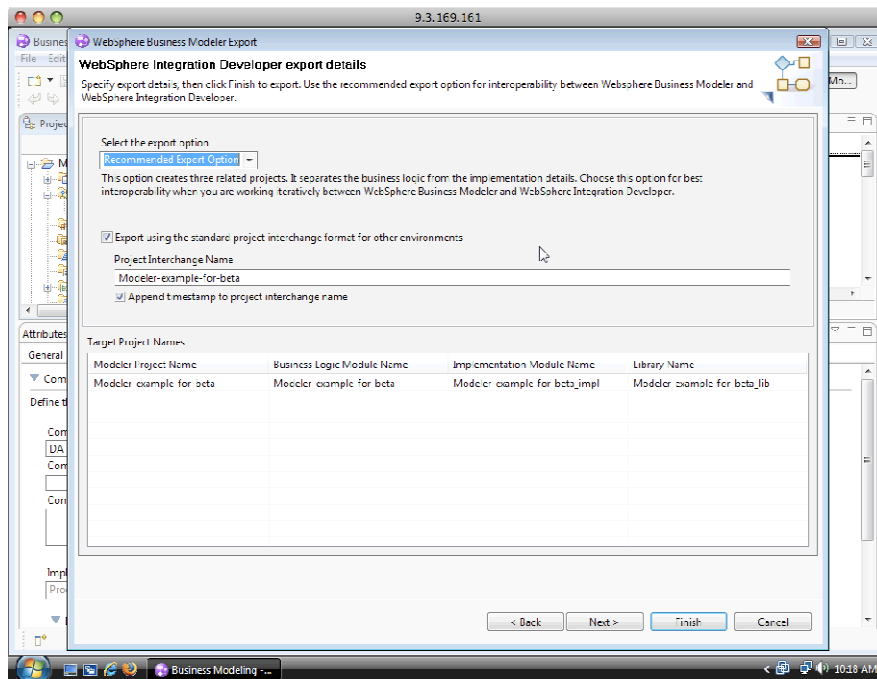
12. Select WebSphere Integration Developer and choose Next.



13. Provide a target directory for example C:\lab\export and export entire project and related projects. Click Next.



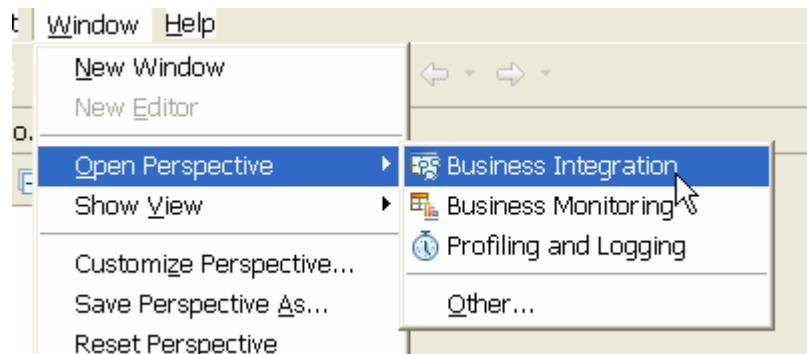
14. Choose the defaults and hit Finish.



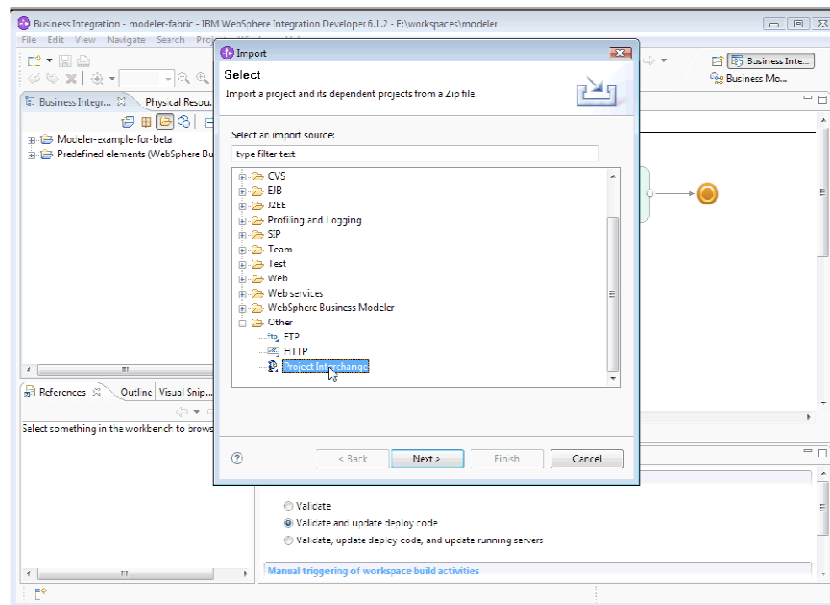
- ___ 15. If you get a warning message click OK.
- ___ 16. Close Business Modeler by clicking on the red X in the top right corner. Click Yes to save changes



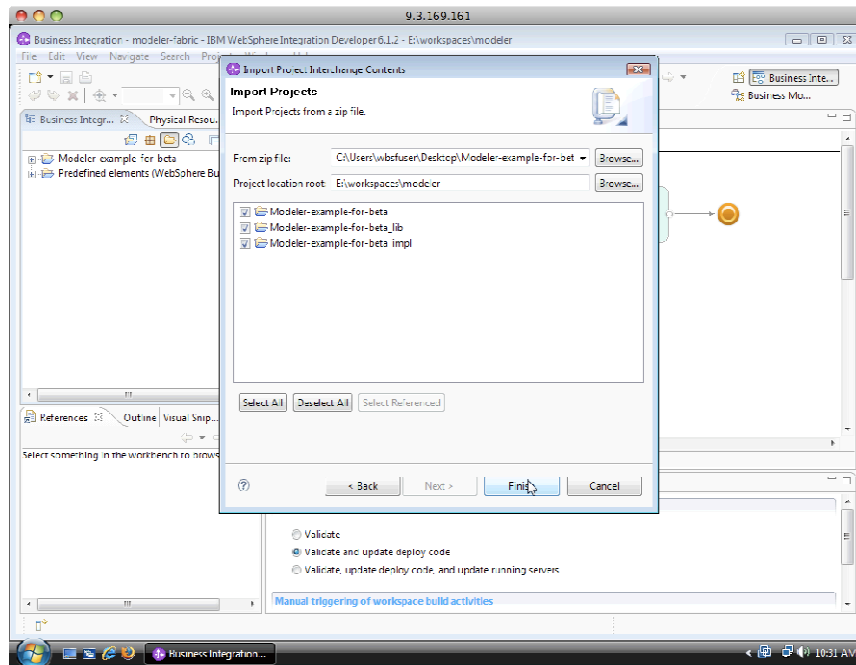
- ___ 17. Start WebSphere Integration Developer by selecting Start > All Programs > IBM WebSphere Integration Developer > IBM WebSphere Integration Developer 6.2 > WebSphere Integration Developer 6.2
- ___ 18. Keep the default workspace and click OK
- ___ 19. If the Business Integration perspective is not open, then select from Windows > Open Perspectives and click the OK button.



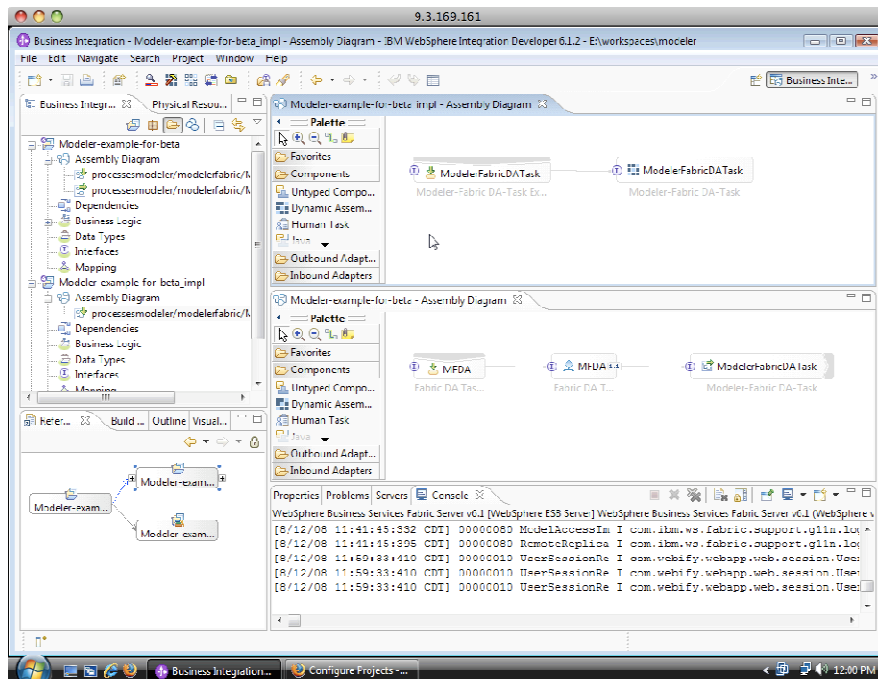
- ___ 20. Once in the WebSphere Integration Developer perspective, right click in the Business Integration tab and choose Import. The Import window should appear. Choose Project Interchange then click the Next button.



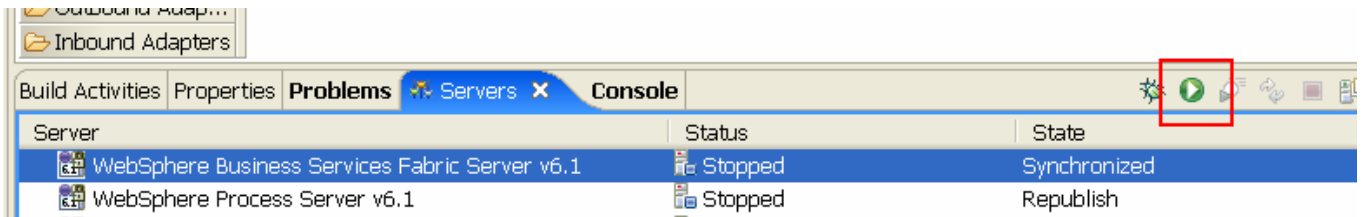
21. Locate the Modeler PIF file that you created earlier in C:\lab\export and keep the current workspace as your project location root. Click the Select All button and then the Finish button.



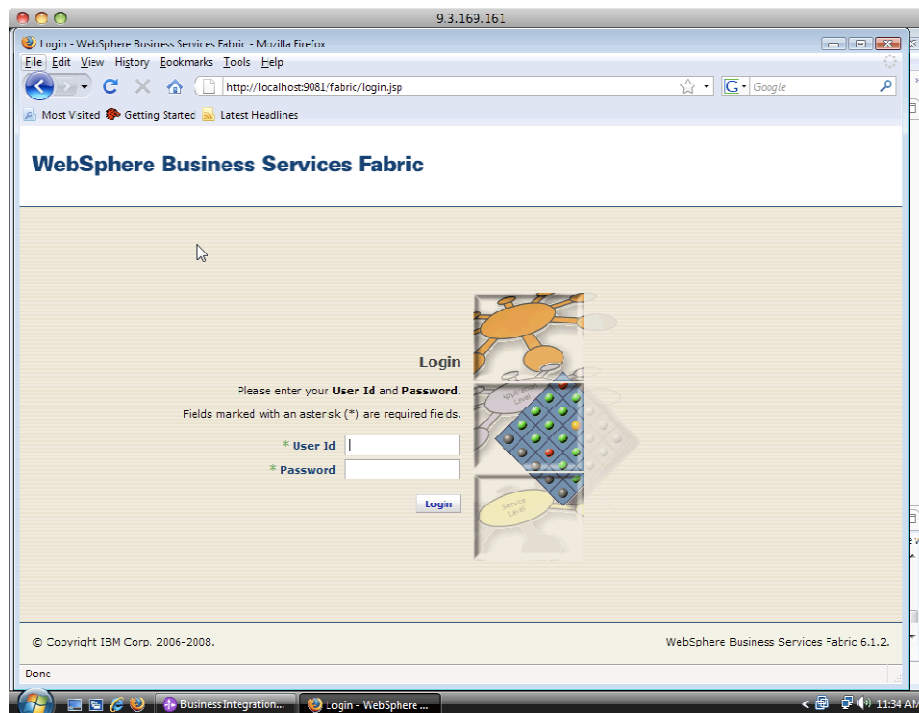
22. The Modeler Project should have been successfully imported to WebSphere Integration Developer. From the Business Integration Tab, you can expand the tree and open the assembly diagram of the two modules: Modeler-example-for-beta and Modeler-example-for-beta_impl. They should look similar to the ones shown here:



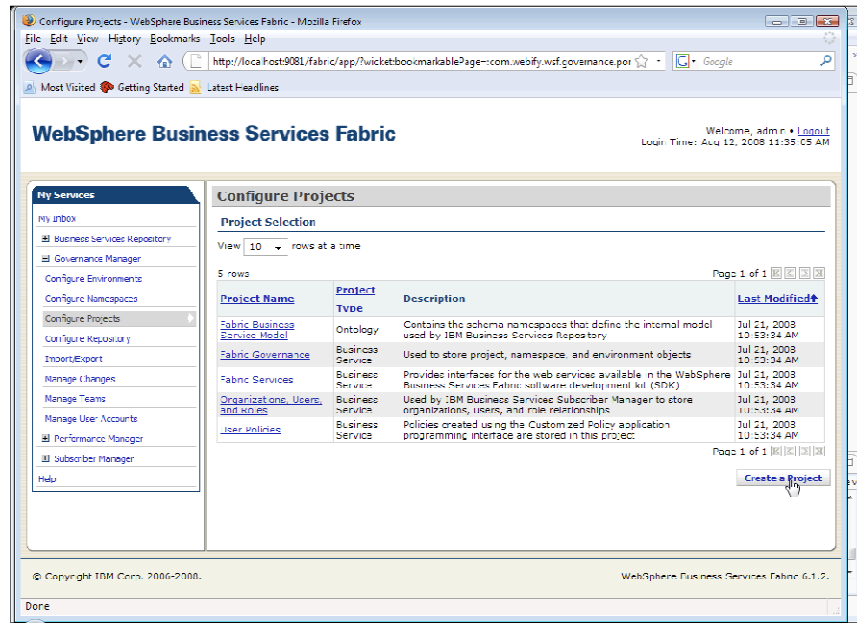
23. In the servers tab start the WebSphere Business Services Fabric server if not already started by selecting WebSphere Business Services Fabric and click the green play button.



24. After waiting several minutes for the server to start, once the server has started open a Web Browser to <http://localhost:9081/fabric/login.jsp>. It will be helpful for later labs to bookmark this website. Login to fabric as the administrator with username admin and password admin.

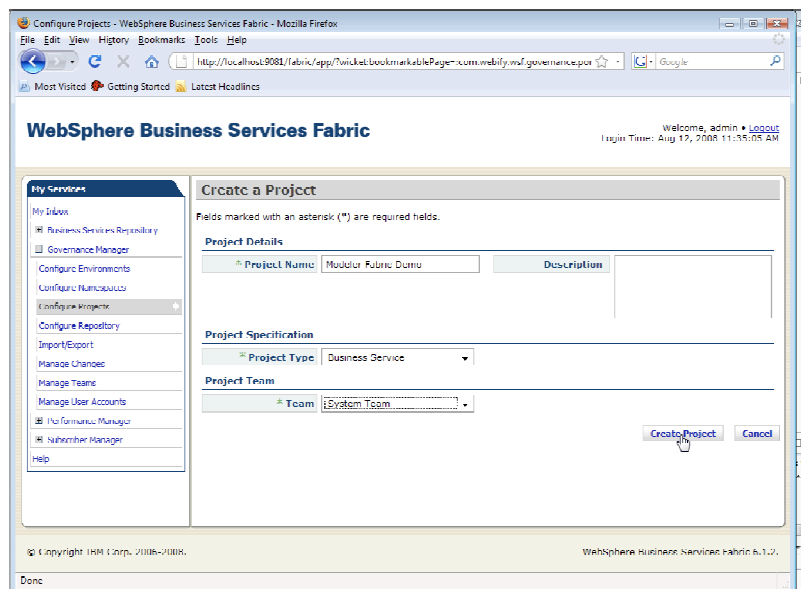


25. Expand the Governance Manager menu under My Services, select Configure Projects and choose create a project.

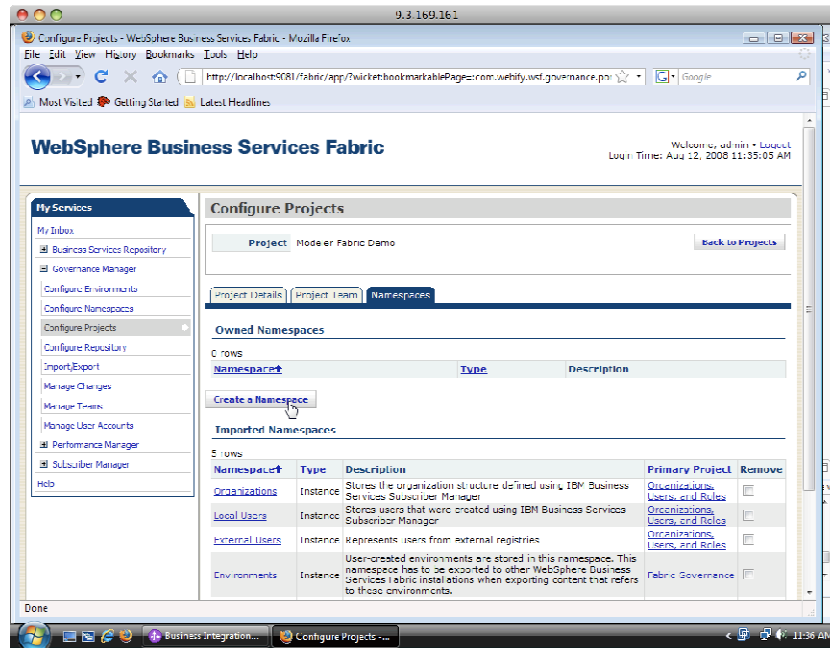


26. Enter these details :

- ___ a. Enter a Project Name as Modeler Fabric Demo
- ___ b. Select Business Service as the Project Type.
- ___ c. Select System Team as the Team.
- ___ d. Click Create Project.



___ 27. Once the project is created, switch to the Namespace Tab. Click Create a Namespace.

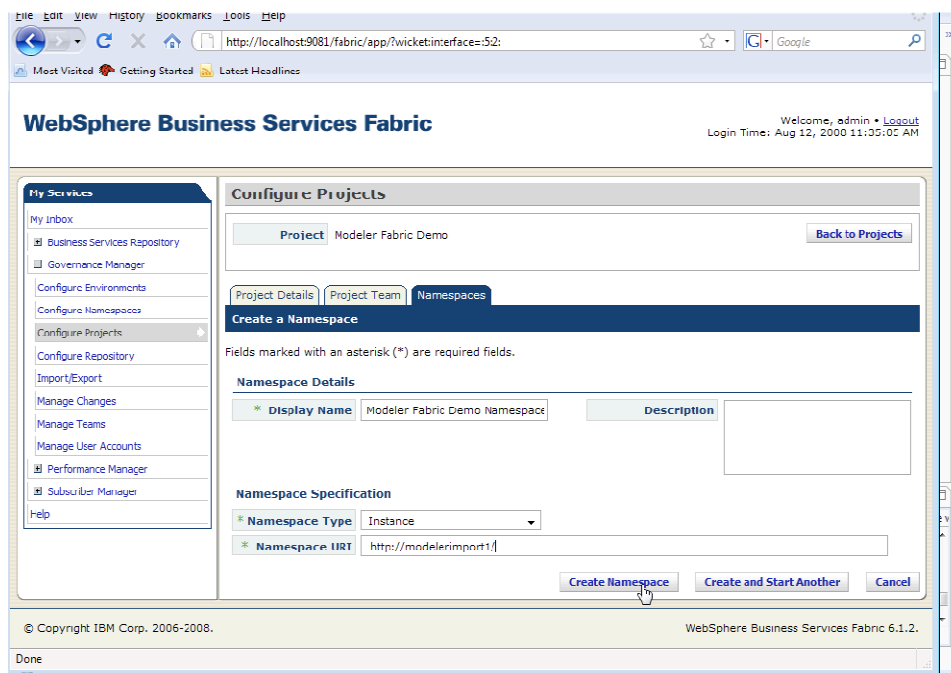


___ 28. Enter Display Name as Modeler Fabric Demo Namespace

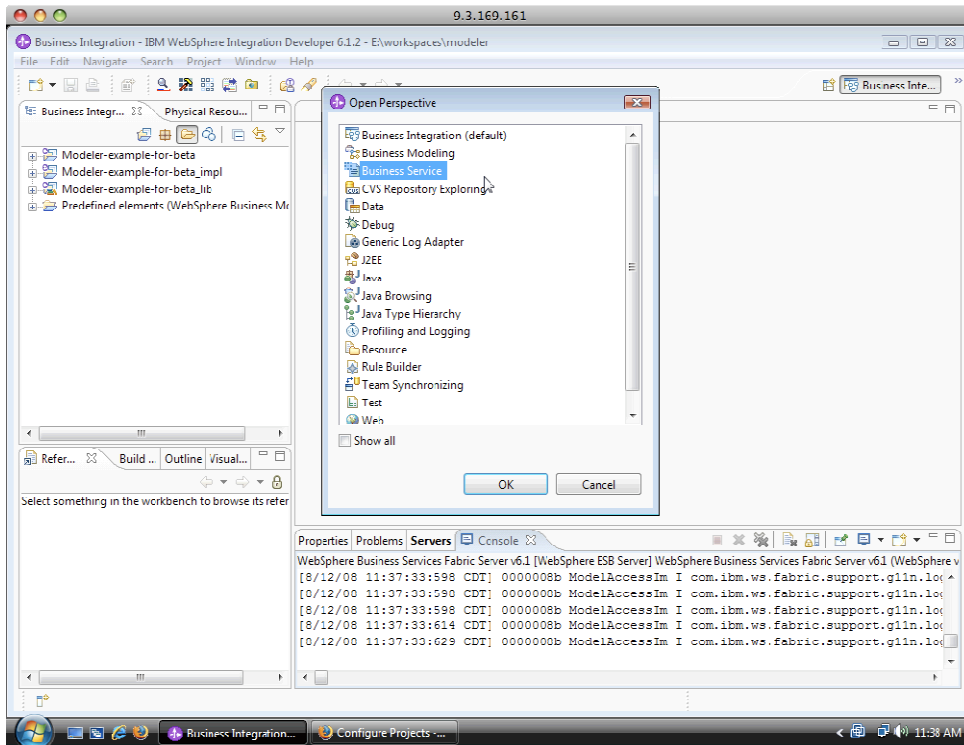
___ a. Select Instance as the Namespace Type

___ b. Enter Namespace URI as <http://modelerimport1/>

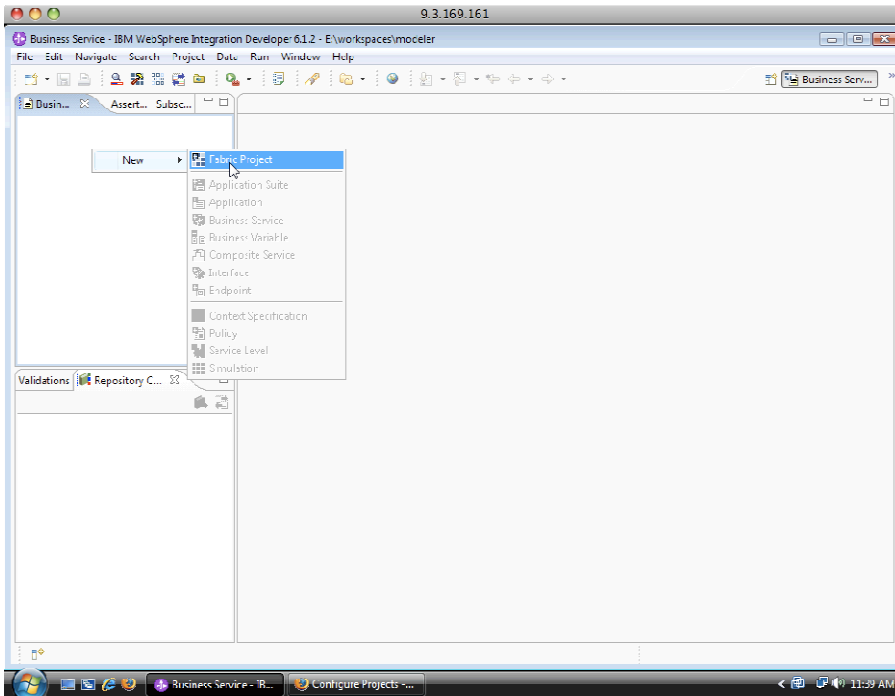
___ c. Click Create Namespace.



29. Switch back to WebSphere Integration Developer and open the Business Service perspective under Window > Open Perspective > Other. Click OK.



30. From the Business Service Tab, right click and select New > Fabric Project



___ 31. Enter Project Name as ModelerFabricDemo and click Next.

___ 32. Click Configure

___ 33. Enter these details :

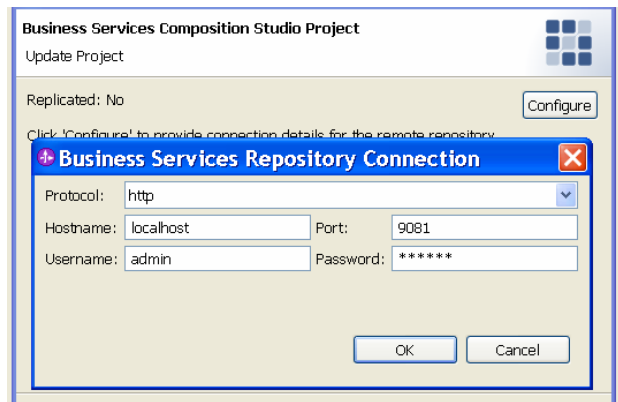
Hostname : localhost

Port : 9081

Username : admin

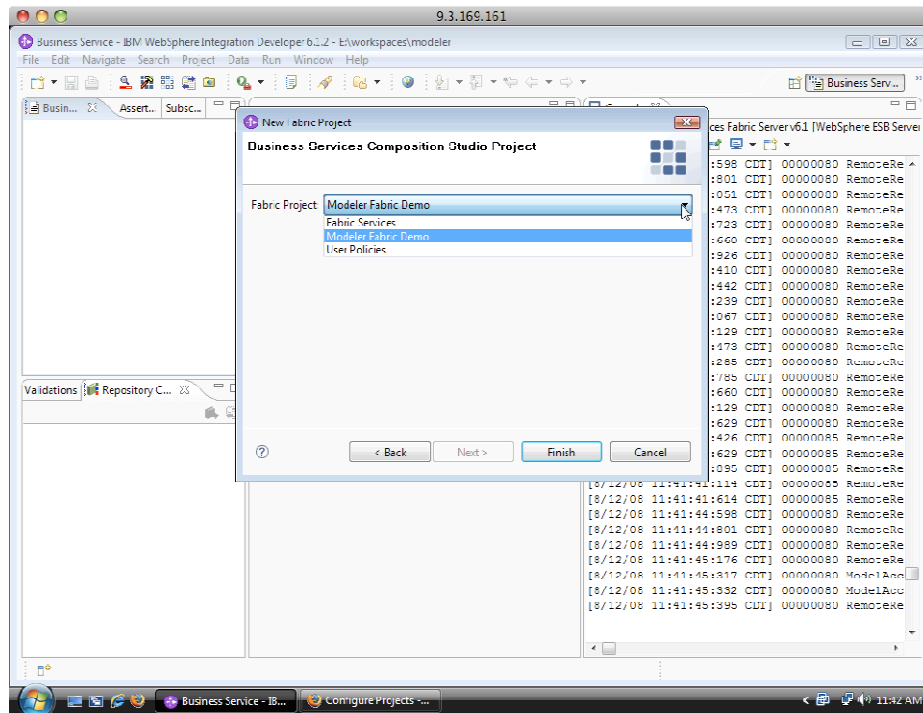
Password : admin

___ 34. Click OK

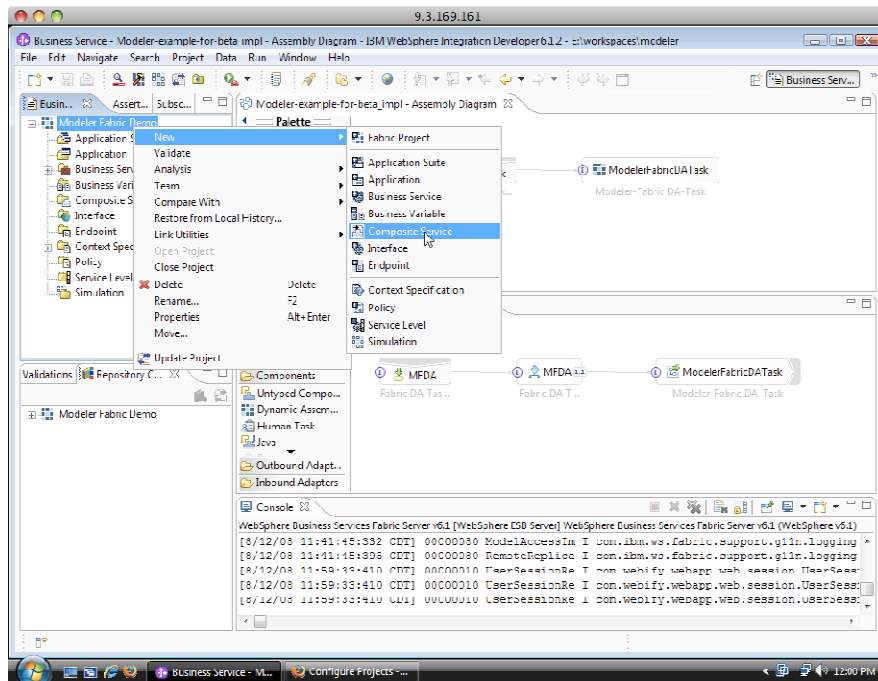


___ 35. Click Next

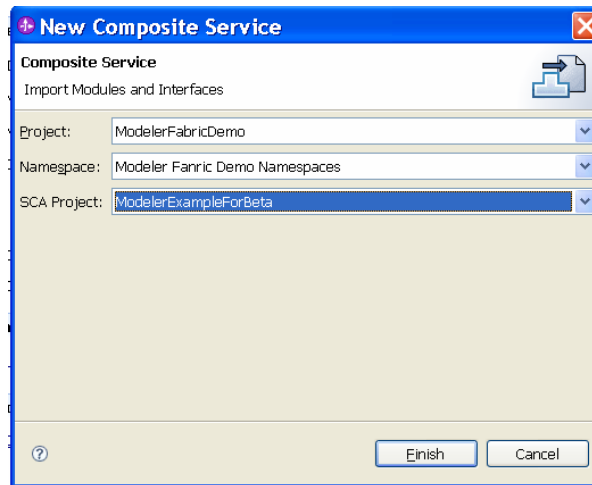
36. Select Modeler Fabric Demo under Fabric Project drop down and click Finish



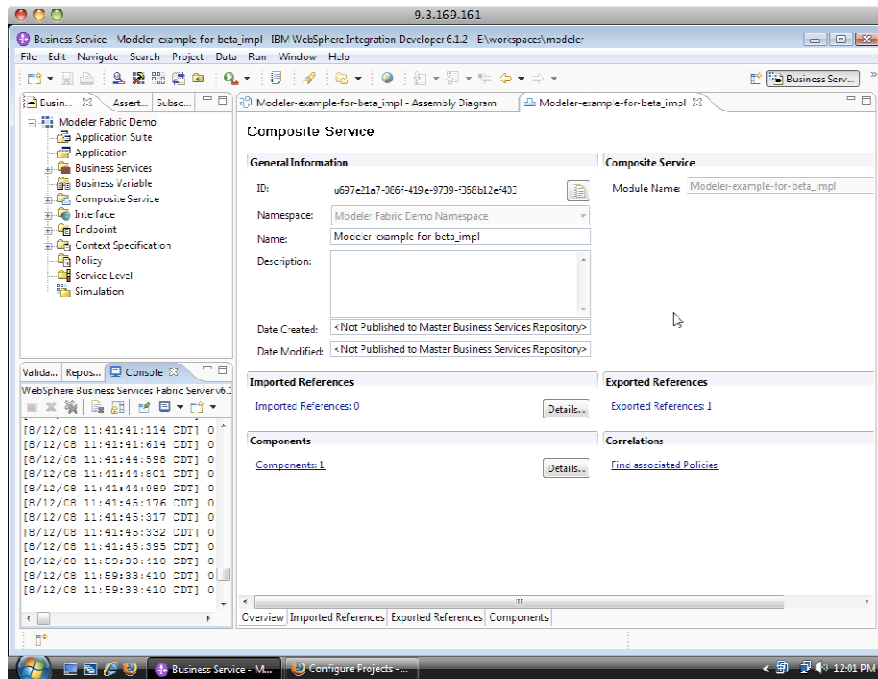
37. The Modeler Project should now be imported into Business Services perspective. Expand the tree and right click the imported project and select New > Composite Service.



___ 38. Select the following settings for composite service and click Finish



___ 39. The Modeler created DA will be imported into WebSphere Business Services Fabric.



What you did in this lab

You have now created a new fabric project. This completes this lab.