



IBM Software Group

IBM WebSphere® Process Server V6.0.2

Profile creation wizard



@business on demand.

© 2007 IBM Corporation
Updated April 6, 2007

This presentation will cover the Profile creation wizard feature of WebSphere Process Server V6.0.2

Goals

- Discuss Profile creation and augmentation for WebSphere Process Server V6.0.2 profiles
 - ▶ Cover a profile wizard introduction and initial profile information
 - ▶ Step through creation and augmentation of the 3 types of profiles for WebSphere Process Server V6.0.2 (stand-alone, deployment manager, and custom profiles)
 - ▶ Discuss troubleshooting topics like known limitations, best practices, debugging and logging information



The goal of this presentation is to discuss Profile creation and augmentation for WebSphere Process Server V6.0.2. An introduction to the profile wizard and initial profile information will also be provided. Next, the sequence of steps for creation and augmentation of the three types of profiles for WebSphere Process Server V6.0.2 will be covered, followed by troubleshooting topics, known limitations, best practices, and debugging and logging information.

Profile creation wizard introduction

- Separate InstallShield MultiPlatform based GUI wizard
- Supports creation of new profiles and augmentation of existing profiles
- Supports three profile types
 - ▶ Stand-alone process server profile
 - ▶ Deployment manager profile
 - ▶ Custom node profile
- Provided as a separate tool to support creation of multiple profiles for a single binary installation
- Option to run wizard at end of custom installation for WebSphere Process Server V6.0.2 installation

The Profile creation wizard is a separate InstallShield Multiplatform based GUI Wizard that supports creation of new profiles and augmentation of existing profiles. It also supports the three profile types: Stand-alone process server profile, Deployment manager profile, and Custom node profile. The Profile creation wizard is provided as a separate tool to support creation of multiple profiles for a single binary installation. The option to launch the Profile creation wizard is presented at end of a Custom installation for WebSphere Process Server V6.0.2.

Profile creation wizard flow

- Welcome screen
- Existing profile detection screen
- Profile type selection screen
- Profile augmentation selection screen
- Profile type specific configuration screens
- Pre-profile creation and augmentation summary screen
- Post-profile creation and augmentation summary and First Steps page

The first screen displayed is the welcome screen, followed by the existing profile detection screen. Next, you must select which profile type to create on the profile type selection screen. If you choose to augment a profile, the profile augmentation selection screen follows along with profile type specific configuration screens. In this presentation, the pre-profile creation and augmentation summary screen and the post-profile creation and augmentation summary will be displayed. The profile will then be created. The last screen displayed will provide you the opportunity to launch the First Steps page.

Existing profile detection

- Existing profile detection screen will be displayed if there are existing Application Server profiles that have
 - ▶ not been fully augmented by WebSphere Process Server
 - ▶ not been federated to a deployment manager
 - Custom Profiles may be unfederated first so that they can be augmented and then refederated
- Given a choice to either
 - ▶ Create a new profile
 - ▶ Augment an existing profile
- If “Augment an existing profile” is selected
 - ▶ Only those profile types that have valid profiles for augmentation will be displayed on the profile type selection screen
 - ▶ A list of available profiles of that type will be given on the profile augmentation selection screen



The profile creation wizard can detect existing WebSphere Application Server profiles. The existing profile detection screen will be displayed if there are existing WebSphere Application Server profiles that have not been fully augmented by the Process Server or have not been federated to a deployment manager. Custom Profiles can be unfederated first so that they can be augmented and then refederated to a WebSphere Process Server deployment manager profile. On this screen, you are given a choice to either create a new profile or augment an existing profile. If you choose to “Augment an existing profile”, only those profile types that have valid profiles for augmentation will be displayed on the profile type selection screen. A list of available profiles of that type will be given on the profile augmentation selection screen.

Profile types

- Stand-alone Process Server profile
 - ▶ Profile that is not federated to a deployment manager cell
 - ▶ Federation of stand-alone process server profiles is supported in WebSphere Process Server V6.0.2 with some restrictions
- Deployment Manager profile
 - ▶ Used to manage a cell
 - ▶ Custom profiles get federated to a deployment manager
- Custom profile
 - ▶ Empty node with no server defined
 - ▶ Meant to be federated to a deployment manager
 - ▶ Can be federated at profile creation time or using the addNode command
 - ▶ Once federated, you have option of creating a default WebSphere Application Server, WebSphere Enterprise Service Bus server or a WebSphere Process Server in the custom node.
 - Remember that you cannot create a WebSphere Enterprise Service Bus profile but can create a WebSphere Enterprise Service Bus server in the federated custom node.
- **Note:** You must have root privileges on Linux® or UNIX® systems, or be a member of the Administrator group on Windows® systems when running the profile creation wizard.

There are three types of profile. The stand-alone WebSphere Process Server profile is a profile that will now be allowed to federate to a deployment manager cell with V6.0.2. Federation of stand-alone profile was not supported in version 6.0 and 6.0.1 but now supported in V6.0.2 with some restrictions. The second type of profile is a deployment manager profile, which is used to manage a cell and allows custom profiles to be federated to a deployment manager. The third type of profile is the custom profile, which is an empty node with no server defined. Its purpose is to be federated to a deployment manager, either at profile creation time or using the addNode command. Once federated, you have the option of creating a default WebSphere Application Server, WebSphere Enterprise Service Bus server or a WebSphere Process Server in the custom node. The profile creation wizard must be run by a user with root authority on Linux or UNIX platforms or a member of the Administrator group on Windows platforms.

Section

Stand-alone Process Server profile creation and augmentation flow

This section will cover wizard flow for the stand-alone profile.

Stand-alone Process Server profile creation and augmentation flow

- Same flow as the WebSphere Application Server profile creation wizard plus additional Process Server specific screens
- Following screens are in common with WebSphere Application Server:
 - ▶ Profile name
 - ▶ Profile directory
 - ▶ Node and host names
 - ▶ Port value assignment
 - ▶ Windows service definition (Windows only)



The stand-alone profile for the WebSphere Process Server follows the same flow as the WebSphere Application Server Profile creation wizard with some additional Process Server specific screens. Screens such as profile name, profile directory, node and host names, and port value assignment are the same as the profile wizard for WebSphere Application Server.

Service Component Architecture configuration

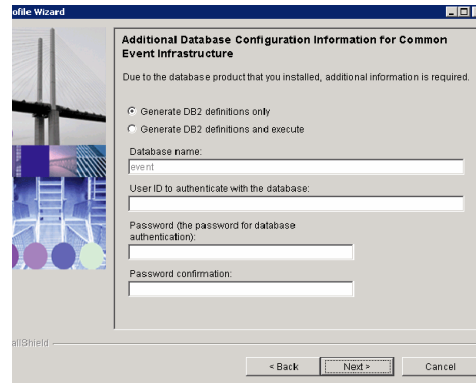
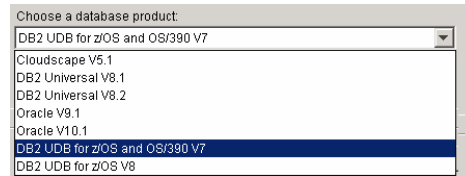


- User ID and password are required when the check box is checked
- This can also be configured from the Administrative Console after profile creation

The core technology that allows a process server application to run is Service Component Architecture (SCA), which is configured first in the profile creation wizard. A user ID and password are required when the check box is selected to configure the Systems Integration Bus for running in a secured mode or you can configure security from the Administrative Console after profile creation.

Common Event Infrastructure configuration

- User ID and password for Messaging are required
- No additional configuration needed if the default database, Cloudscape™, is used
- DB2® and Oracle require additional configuration
- DB2 Universal OS/390® V7.1 or DB2 Universal OS/390 V8.1 are now supported by the V6.0.2 profile wizard.

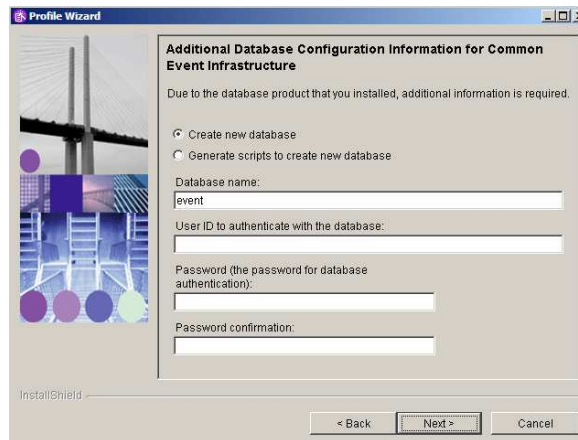


Common Event Infrastructure or CEI technology uses open-standard Common Base Events to communicate events, errors, and faults. A user ID and password are required for the messaging engine and no additional configuration is needed if default Cloudscape database is used. DB2 and Oracle are supported with additional configuration required.

If DB2 Universal OS/390 V7.1 or DB2 Universal OS/390 V8.1 is selected in versions before 6.0.2, the data source and database must be created and configured outside of the Profile Wizard. But with V6.0.2, these database versions are supported by the Profile Wizard

CEI additional DB2 configuration

- Use the “generate scripts” option to be able to review and run the scripts later, or if the database already exists
- User ID and Password are required and must already exist
- Default database name is event but can be changed
- Database name should be 8 characters or less



The screenshot shows a window titled "Profile Wizard" with a sub-header "Additional Database Configuration Information for Common Event Infrastructure". Below the sub-header, it states: "Due to the database product that you installed, additional information is required." There are two radio button options: "Create new database" (which is selected) and "Generate scripts to create new database". Below these are three text input fields: "Database name:" with the value "event", "User ID to authenticate with the database:", and "Password (the password for database authentication):". A "Password confirmation:" field is also present. At the bottom right, there are three buttons: "< Back", "Next >", and "Cancel".

If you are setting up CEI with a DB2 database instead of the default Cloudscape database, use the “generate scripts” option to review and run the scripts later, or if the database already exists. The user ID and password are required and must already exist, meaning the database will have to be already be created in the database utility. The default database name is “event”, but you can change it to match the database name that is already set up, or use a more meaningful database name of 8 characters or less for CEI.

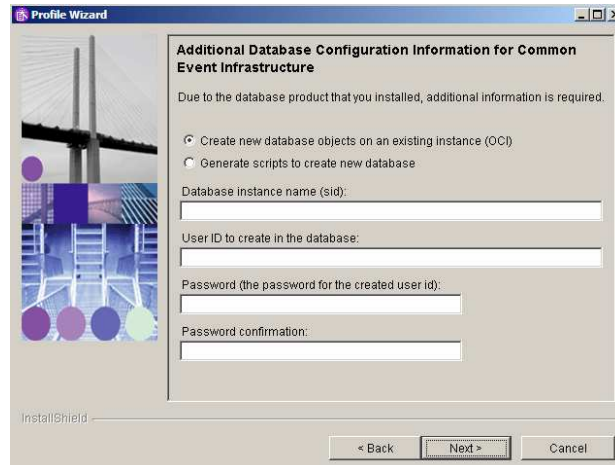
CEI additional DB2 configuration (cont.)



DB2 Universal drivers are shipped with the Process Server and their location is used for the default value. These can be used to connect to a remote DB2 server. The profile creation tool looks for the db2jcc.jar file in that default directory. The database node name is only used for connecting to a remote DB2 server and the database server name and server port are only used for JDBC driver type 4.

CEI additional Oracle configuration

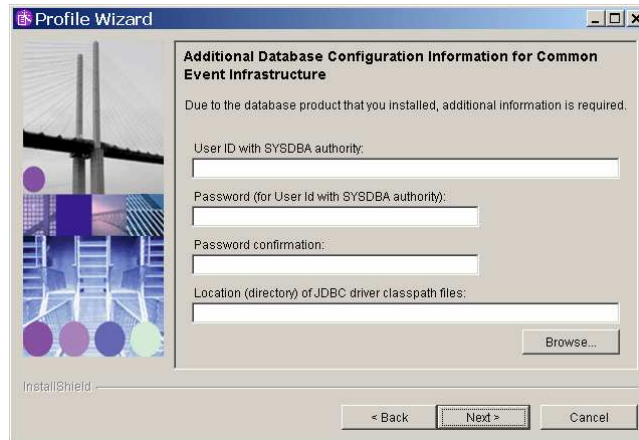
- Use the “generate scripts” option to be able to review and run the scripts later, or if the database already exists
- A database instance name or Oracle SID is required
- User ID and password are created for the database and do not have to already exist



If Oracle will be used to handle the messaging database for CEI, again use the “generate scripts” option to review and run the scripts later, or if the database already exists . A database instance name or Oracle SID is required and the user ID and password are created for the database and do not have to already exist.

CEI additional Oracle configuration (cont.)

- Specify a user ID and password with SYSDBA authority in order to create the database
- Looks for the “classes12.zip” file in the directory specified for the JDBC driver classpath files



For Oracle, specify a User ID and Password with SYSDBA authority in order to create the database. The profile creation wizard looks for the “classes12.zip” file in the directory specified for the JDBC driver classpath files.

Business process choreographer configuration



When configuring the business process choreographer (BPC), do not create a sample if you plan on doing a production level BPC configuration for this profile. Production level BPC configuration is done using the administrative console wizards and can be done after the Process Server is fully installed with a profile to run from. Removing the sample BPC configuration is a difficult process that can be avoided by not installing them. Configuration with a database other than Cloudscape requires the use of the administrative console wizard.

Application Scheduler configuration



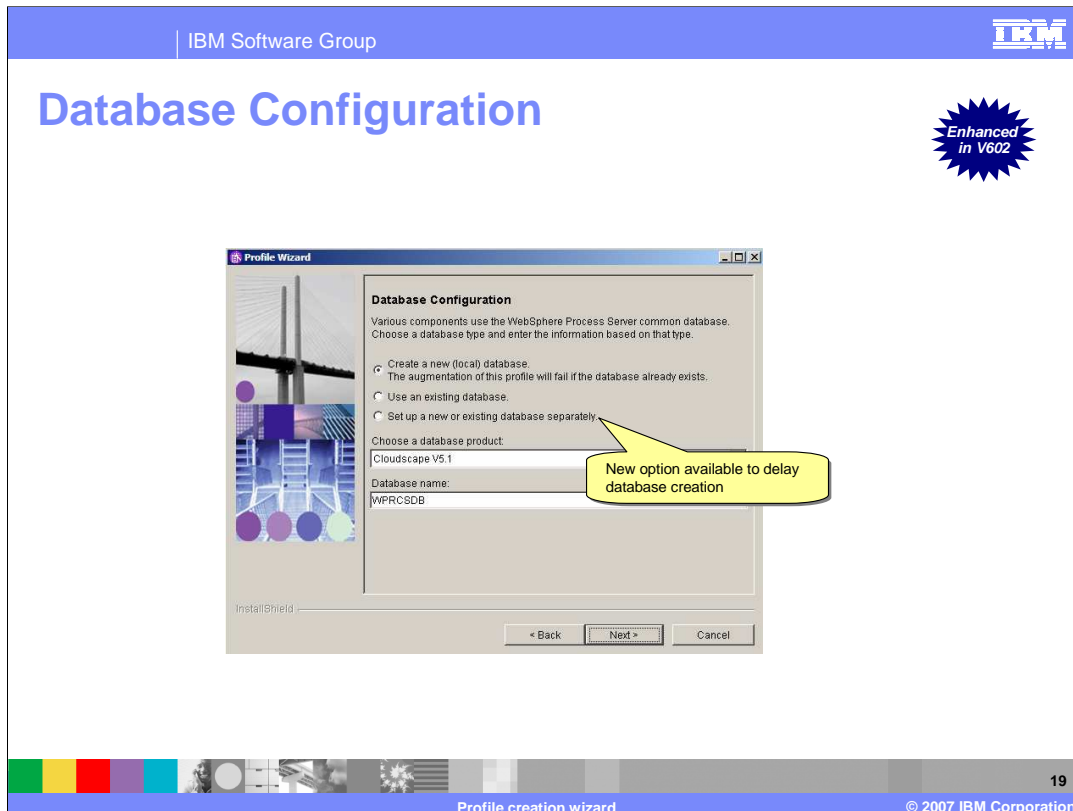
The Profile creation wizard also allows you to configure the application scheduler, which can be used to start and stop applications at certain times according to a schedule that you define. By default, the server that is created on all stand-alone Process Server profiles is called "server1". You should only need to change this on an augmentation where the server has been renamed or additional servers have been added.



The Process Server uses a central database to run applications and correlate data. The name of this database is the WPRCSDB, not the WPSDB, which conflicts with the WebSphere Portal Server database. Creation of a new database is only supported if the database is local, so if you are connecting to a remote database, that database must already exist.

The first two options shown here have the same functionality as exists in V6.0 and V6.0.1.

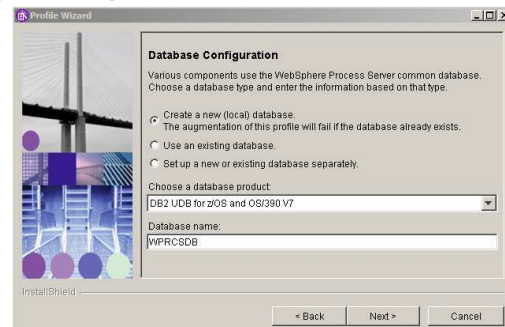
Delay database creation functionality has been added for CommonDB in V6.0.2. For BPC, the configuration is done after the profile creation and so there is no option to export the scripts. CEI also provides an option to do the database configuration after the profile creation.



The “set up a new or existing database separately” option enables you to do the database configuration after the profile creation. In the scenario where you decide to export the scripts instead of executing them, wrong values for the database configuration will not cause the profile actions to fail. The errors will be visible when the exported scripts are run.

If you select “setup a new or existing database separately”, the Database product cannot be Cloudscape. You will be prompted for the different parameters for database configuration in the next panels. The installer will customize the database scripts based on the values that you provide and write the script into the directory structure that is discussed in the **Database configuration guide** presentation. The profile creation wizard will not run any of the database related scripts and does not make any database connections. The scripts that are generated can be used to create a new database and the tables that are required for the individual components. The same set of scripts can be used to create the tables on an existing database.

Database Configuration (cont.)



20

Profile creation wizard

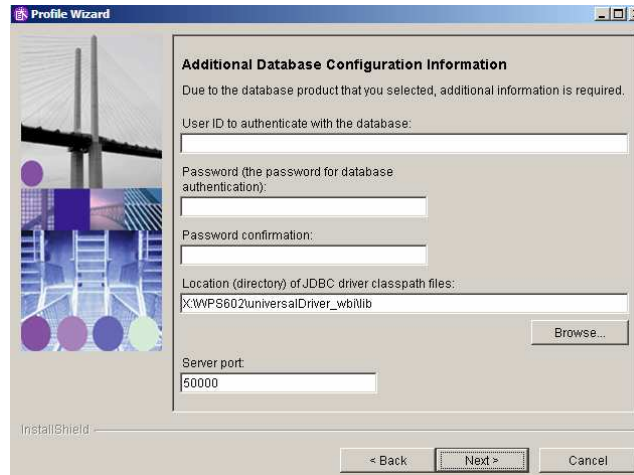
© 2007 IBM Corporation

DB2 Universal OS/390, Oracle OCI and Oracle Thin client configuration require that the WPRCSDB database is already created. Cloudscape is not supported in an Network Deployment environment; it is only supported on stand-alone Process Server profiles).

The list of supported databases is shown here. If the selected database is not supported, business rule group and selector components will be configured to use Cloudscape. All components except the business rule group and selector will be configured to use the database that you select.

Database Configuration – DB2 Universal

- Default JDBC drivers provided same as Common Event Infrastructure (CEI)
- Many variations on this screen depending on the database product and create or use existing database



The screenshot shows a 'Profile Wizard' dialog box with the following fields and controls:

- Additional Database Configuration Information**
Due to the database product that you selected, additional information is required.
- User ID to authenticate with the database:
- Password (the password for database authentication):
- Password confirmation:
- Location (directory) of JDBC driver classpath files:
- Server port:
- Navigation buttons: < Back, Next >, Cancel

With the WPRCSDB, default JDBC drivers can be provided which are the same as with Common Event Infrastructure. There are many variations on this screen depending on the database product and whether you select to create a database or use an existing database.

Deployment manager profile creation and augmentation flow

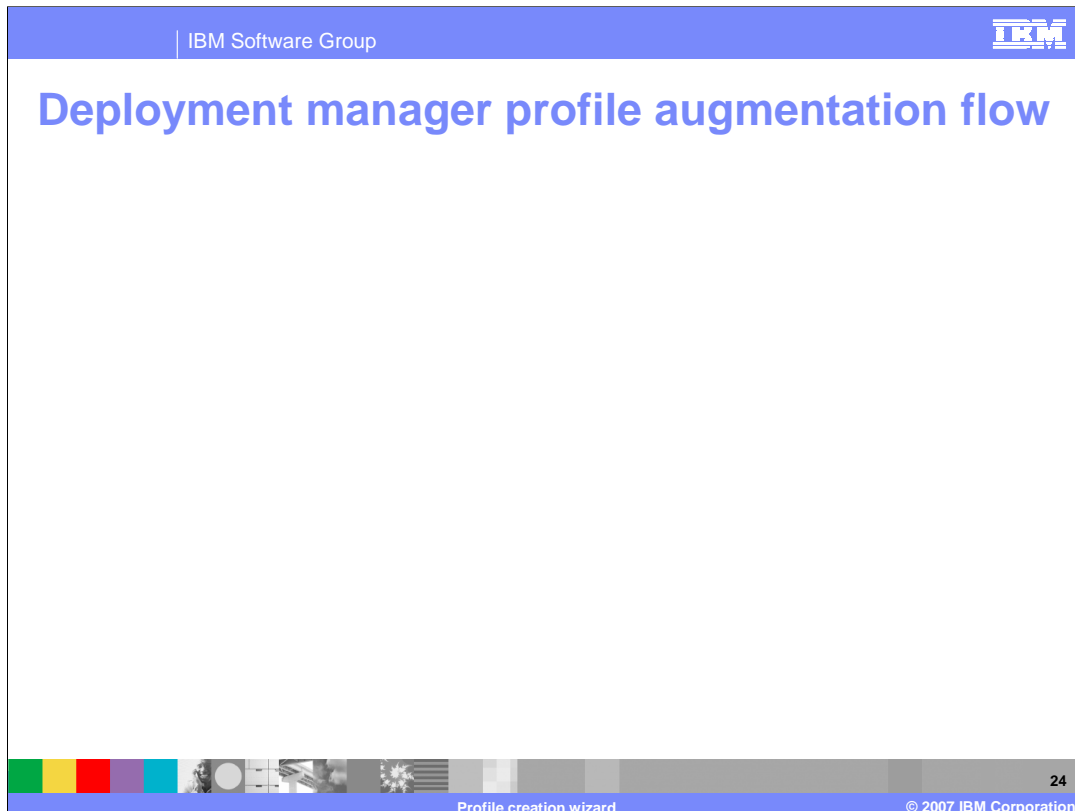


This section will cover the Deployment Manager Profile Creation and Augmentation Flow.

Deployment manager profile creation flow



The deployment manager profile creation has the same flow as the WebSphere Application Server profile creation wizard with a few additional Process Server specific screens. Again the profile name, profile directory, node, host, cell names, port value assignment, and Windows service definition screens are the same as with the Application Server. However, the deployment manager uses different ports than the stand-alone profile. Additional screens that follow are the same for profile augmentation.



The SCA configuration is the same as a stand-alone Process Server profile. However, the database configuration is different in that Cloudscape is not supported and the default database is DB2 Universal.

The list of databases supported by the business rule group and selector components are shown here. If the selected database is different from the ones supported, the repository database must be configured manually for the business rule group and selector components. For more details refer to the information center topic linked here.

Custom profile creation and augmentation flow

This section will cover the Custom Profile Creation and Augmentation Flow.

Custom profile creation flow



Custom profile creation has the same flow as the Application Server profile creation wizard with some additional Process Server specific screens, such as Federation, Profile Name, Profile Directory, Node, and Host Names. Additional screens are the same as for profile augmentation.

Custom profile augmentation flow

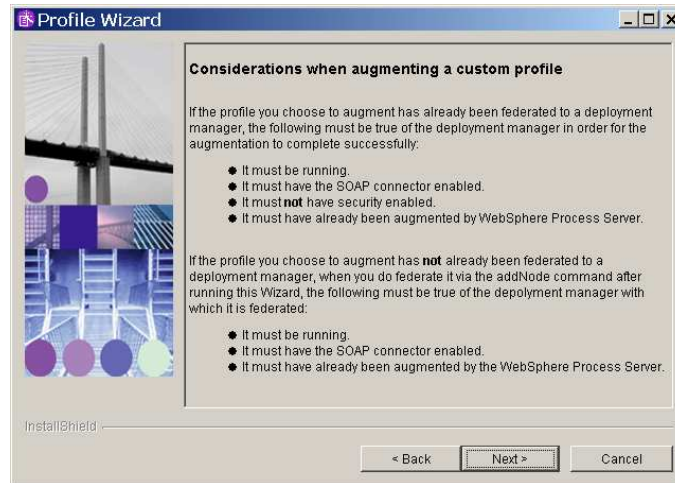
- Considerations when augmenting a custom profile
 - ▶ warning window will be displayed
- Database Configuration
 - ▶ Different than other profile types



There are several considerations when augmenting a custom profile. For instance, the augmentation warnings will be displayed on the “considerations” window in the profile augmentation process and the database configuration is different than with other profile types.

Augmenting a custom profile: Considerations

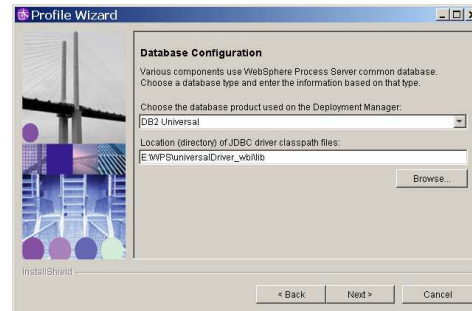
- Augmentation of an already federated profile is NOT supported in 6.0.2
- All federation will be done afterwards using the addNode command



For example, the “considerations” warning shown here will appear. The main warning is that augmentation of an already federated profile is NOT supported in V6.0.2. Node federation must be done afterwards using the addNode command.

Database Configuration – Custom profile

- Assumes a remote connection to an existing database that was defined by the Deployment Manager profile
- The business rule group and selector components support
 - ▶ DB2 Universal, DB2 Universal OS/390 V7.1, DB2 Universal OS/390 V8.1, DB2 CLI
 - ▶ Oracle OCI (Oracle OCI client) and Oracle Thin (Oracle Thin) for their repository.
 - ▶ If selected database is different from the ones supported, the repository database needs to be configured manually for the business rule group and selector components



http://publib.boulder.ibm.com/infocenter/dmndhelp/v6rxmx/topic/com.ibm.wsps.adm.doc/doc/cbre_busiru_installnetworkdeploy.html

The database configuration for a custom profile assumes a remote connection to an existing database was defined by the Deployment Manager profile. Again, the default JDBC drivers for DB2 are provided in the Process Server directory.

The list of all supported databases for business rule group and selector components are shown here. If the selected database is different from the ones supported, the repository database must be configured manually for the business rule group and selector components.

For information on configuring the repository database for the business rule group and selector components manually, refer to the information center link provided.

Section

Summary

This section will provide a summary of this presentation.

Summary

- Discussed Profile creation and augmentation for WebSphere Process Server V6.0.2 profiles
- Covered a profile wizard introduction and initial information on profiles
- Stepped through creation and augmentation of the three types of profiles for WebSphere Process Server V6.0.2
 - ▶ stand-alone
 - ▶ deployment manager
 - ▶ custom profiles

This presentation covered profile creation and augmentation for WebSphere Process Server V6.0.2 profiles. The profile wizard was introduced, and initial information on profiles was covered. Next, profile creation and augmentation of the three types of profiles for WebSphere Process Server V6.0.2 were discussed.

Feedback

Your feedback is valuable

You can help improve the quality of IBM Education Assistant content to better meet your needs by providing feedback.

- Did you find this module useful?
- Did it help you solve a problem or answer a question?
- Do you have suggestions for improvements?

[Click to send e-mail feedback](#)



You can help improve the quality of IBM Education Assistant content by providing feedback.

Trademarks, copyrights, and disclaimers

The following terms are trademarks or registered trademarks of International Business Machines Corporation in the United States, other countries, or both:

Cloudscape DB2 IBM OS/390 WebSphere

Windows and the Windows logo are registered trademarks of Microsoft Corporation in the United States, other countries, or both.

JDBC and all Java-based trademarks are trademarks of Sun Microsystems, Inc. in the United States, other countries, or both.

UNIX is a registered trademark of The Open Group in the United States and other countries.

Linux is a registered trademark of Linus Torvalds in the United States, other countries, or both.

Product data has been reviewed for accuracy as of the date of initial publication. Product data is subject to change without notice. This document could include technical inaccuracies or typographical errors. IBM may make improvements or changes in the products or programs described herein at any time without notice. Any statements regarding IBM's future direction and intent are subject to change or withdrawal without notice, and represent goals and objectives only. References in this document to IBM products, programs, or services does not imply that IBM intends to make such products, programs or services available in all countries in which IBM operates or does business. Any reference to an IBM Program Product in this document is not intended to state or imply that only that program product may be used. Any functionally equivalent program, that does not infringe IBM's intellectual property rights, may be used instead.

Information is provided "AS IS" without warranty of any kind. THE INFORMATION PROVIDED IN THIS DOCUMENT IS DISTRIBUTED "AS IS" WITHOUT ANY WARRANTY, EITHER EXPRESS OR IMPLIED. IBM EXPRESSLY DISCLAIMS ANY WARRANTIES OF MERCHANTABILITY, FITNESS FOR A PARTICULAR PURPOSE OR NON-INFRINGEMENT. IBM shall have no responsibility to update this information. IBM products are warranted, if at all, according to the terms and conditions of the agreements (for example, IBM Customer Agreement, Statement of Limited Warranty, International Program License Agreement, etc.) under which they are provided. Information concerning non-IBM products was obtained from the suppliers of those products, their published announcements or other publicly available sources. IBM has not tested those products in connection with this publication and cannot confirm the accuracy of performance, compatibility or any other claims related to non-IBM products.

IBM makes no representations or warranties, express or implied, regarding non-IBM products and services.

The provision of the information contained herein is not intended to, and does not, grant any right or license under any IBM patents or copyrights. Inquiries regarding patent or copyright licenses should be made, in writing, to:

IBM Director of Licensing
IBM Corporation
North Castle Drive
Armonk, NY 10504-1785
U.S.A.

Performance is based on measurements and projections using standard IBM benchmarks in a controlled environment. All customer examples described are presented as illustrations of how those customers have used IBM products and the results they may have achieved. The actual throughput or performance that any user will experience will vary depending upon considerations such as the amount of multiprogramming in the user's job stream, the I/O configuration, the storage configuration, and the workload processed. Therefore, no assurance can be given that an individual user will achieve throughput or performance improvements equivalent to the ratios stated here.

© Copyright International Business Machines Corporation 2007. All rights reserved.

Note to U.S. Government Users - Documentation related to restricted rights-Use, duplication or disclosure is subject to restrictions set forth in GSA ADP Schedule Contract and IBM Corp.