



IBM Software Group

WebSphere® Process Server V6

WebSphere® Integration Developer V6

Relationship Manager



@business on demand.

© 2005 IBM Corporation
Updated December 14, 2005

This presentation will focus on the Relationship Manager feature of WebSphere Process Server and WebSphere Integration Developer V6.0.

Goals

- Provide an overview of support for data relationships
- Explain the capabilities for the Relationship Manager



The goals of this presentation are to provide an overview of the Relationship service included with WebSphere Process Server and explain the capabilities of the Relationship Manager for working with relationship and role instances.

Agenda

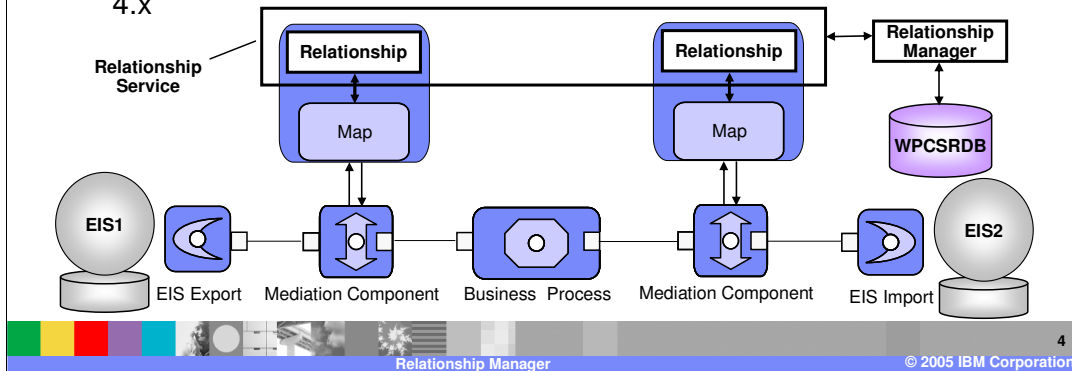
- **Relationship Manager Overview**
- Summary



This section will provide an overview of the Relationship Manager.

Support for Relationships

- WebSphere Process Server includes a Relationship Service for execution of relationships
 - ▶ Provides the same capabilities as the WebSphere InterChange Server v4.X Relationship Service
 - ▶ Also supports user-defined properties at relationship and role levels
- Relationship Manager also included
 - ▶ Similar to Relationship Manager in WebSphere InterChange Server 4.X



WebSphere Process Server includes support for data relationships between different enterprise systems. In order for data from one system to reach another system and be mapped correctly to that system, a relationship must be defined that indicates the data mapping. For each data instance passing through WebSphere Process Server, the relationship will be used and an instance recorded for that specific data in a database (WPCSRDB). This relationship instance can then be reused on additional transactions involving the same data instance. This support included by WebSphere Process Server, is very similar in functionality to the relationship support in WebSphere InterChange Server. In order to view and manage these relationships, a relationship manager is also included in WebSphere Process Server. The relationship manager allows you to view relationships and roles that have been established for your data. The relationship manager in WebSphere Process Server is also very similar to the relationship manager support included with WebSphere InterChange Server.

Relationship Manager Overview

- Relationship Manager provides an interface for working with relationship and role instances
 - ▶ View relationship and role schema information
 - ▶ Retrieve instances based on various query types
 - ▶ Create and delete relationship instances
 - ▶ Modify the contents of a relationship instance, such as adding and deleting role instances
 - ▶ Set property values of relationship and role instances
 - ▶ Activate and deactivate role instances
 - ▶ Rollback instance data
- Available through Administrative Console or MBean in WebSphere Process Server
 - ▶ Stand-alone or Network Deployment environment



Relationship manager is a tool for manually manipulating relationship data to correct errors found in automated relationship management or provide more complete relationship information. In particular, it provides a facility for retrieving as well as modifying relationship instance data.

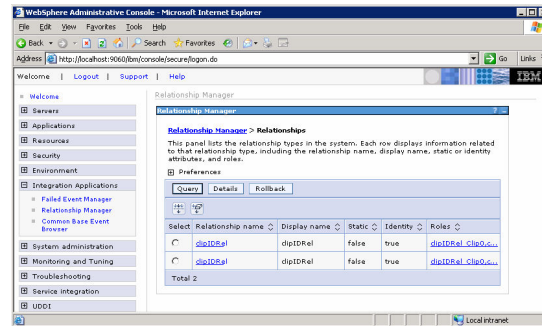
You can use relationship manager to manage entities at all levels: the relationship instance, participant instance, and attribute data and property data levels. For example, you can use relationship manager to:

- Create and delete relationship instances
- Modify the contents of a relationship instance, such as adding and deleting participants
- Add a participant's data and copy and paste the data of a participant from another relationship into the relationship instance, creating a new participant (as long as the participant types are identical)
- Activate and deactivate participants
- Retrieve participants based on instance IDs or data
- Recover from error conditions. For example, when corrupt or inconsistent data from a source application has been sent to the generic and destination application relationship table, you can use relationship manager to rollback the data to a point in time when you know the data is reliable.

The Relationship Manager is actually a server resource that is available through the Administrative Console or MBean. It is available in both a single stand-alone server environment or a Network Deployment environment.

Relationship Manager UI

- Available through Administrative Console as an Integration Application
 - ▶ Accesses WPRCSDB database to retrieve persistence information of relationship and role instances
- View installed Relationships and Relationship instances
 - ▶ View custom properties
- Query on Relationship-based instances or Role-based instances
- Rollback Relationship instance data from a specific time period



A graphical user interface is provided for the Relationship manager in the Administrative console, allowing you to configure, query, view, and perform operations on relationship runtime data. For each relationship instance, relationship manager can display a hierarchical listing of its participants. Each participant fills a role in the relationship and has instance data, properties, and key attributes. The relationship tree also provides detailed information about each of the participants in the relationship instance, such as the type of entity, its value, and the date it was last modified. A relationship instance ID is automatically generated when the relationship instance is saved in the relationship table. Relationship manager will display this instance ID at the top level of the relationship tree. Different relationships can be queried and rolled back based on specific time periods.

Agenda

- Relationship Manager Overview
- **Summary**



This section will provide a summary of this presentation.

Summary

- Instances of relationships are populated with the data that associates information from different applications by the Relationship Service
- Relationship Manager is provided to relationship and role instances



The key point of this presentation is that WebSphere Process Server maintains relationship instance information as data passes from one application to another. This information can be managed using the Relationship manager included with WebSphere Process Server.

Trademarks, Copyrights, and Disclaimers

The following terms are trademarks or registered trademarks of International Business Machines Corporation in the United States, other countries, or both:

IBM	CICS	IMS	MQSeries	Tivoli
IBM (logo)	Cloudscape	Informix	OS/390	WebSphere
e-business	DB2	iSeries	OS/400	xSeries
ALX	DB2 Universal Database	Lotus	pSeries	zSeries

Java and all Java-based trademarks are trademarks of Sun Microsystems, Inc. in the United States, other countries, or both.

Microsoft, Windows, Windows NT, and the Windows logo are registered trademarks of Microsoft Corporation in the United States, other countries, or both.

Intel, ActionMedia, LANDesk, MMX, Pentium and ProShare are trademarks of Intel Corporation in the United States, other countries, or both.

UNIX is a registered trademark of The Open Group in the United States and other countries.

Linux is a registered trademark of Linus Torvalds.

Other company, product and service names may be trademarks or service marks of others.

Product data has been reviewed for accuracy as of the date of initial publication. Product data is subject to change without notice. This document could include technical inaccuracies or typographical errors. IBM may make improvements and/or changes in the product(s) and/or program(s) described herein at any time without notice. Any statements regarding IBM's future direction and intent are subject to change or withdrawal without notice, and represent goals and objectives only. References in this document to IBM products, programs, or services does not imply that IBM intends to make such products, programs or services available in all countries in which IBM operates or does business. Any reference to an IBM Program Product in this document is not intended to state or imply that only that program product may be used. Any functionally equivalent program, that does not infringe IBM's intellectual property rights, may be used instead.

Information is provided "AS IS" without warranty of any kind. THE INFORMATION PROVIDED IN THIS DOCUMENT IS DISTRIBUTED "AS IS" WITHOUT ANY WARRANTY, EITHER EXPRESS OR IMPLIED. IBM EXPRESSLY DISCLAIMS ANY WARRANTIES OF MERCHANTABILITY, FITNESS FOR A PARTICULAR PURPOSE OR NON-INFRINGEMENT. IBM shall have no responsibility to update this information. IBM products are warranted, if at all, according to the terms and conditions of the agreements (e.g., IBM Customer Agreement, Statement of Limited Warranty, International Program License Agreement, etc.) under which they are provided. Information concerning non-IBM products was obtained from the suppliers of those products, their published announcements or other publicly available sources. IBM has not tested those products in connection with this publication and cannot confirm the accuracy of performance, compatibility or any other claims related to non-IBM products. IBM makes no representations or warranties, express or implied, regarding non-IBM products and services.

The provision of the information contained herein is not intended to, and does not, grant any right or license under any IBM patents or copyrights. Inquiries regarding patent or copyright licenses should be made, in writing, to:

IBM Director of Licensing
IBM Corporation
North Castle Drive
Armonk, NY 10504-1785
U.S.A.

Performance is based on measurements and projections using standard IBM benchmarks in a controlled environment. All customer examples described are presented as illustrations of how those customers have used IBM products and the results they may have achieved. The actual throughput or performance that any user will experience will vary depending upon considerations such as the amount of multiprogramming in the user's job stream, the I/O configuration, the storage configuration, and the workload processed. Therefore, no assurance can be given that an individual user will achieve throughput or performance improvements equivalent to the ratios stated here.

© Copyright International Business Machines Corporation 2005. All rights reserved.

Note to U.S. Government Users - Documentation related to restricted rights-Use, duplication or disclosure is subject to restrictions set forth in GSA ADP Schedule Contract and IBM Corp.