

IBM WebSphere® Process Server V6.0 – Lab Exercise

WebSphere Process Server V6 Installation

What this exercise is about	1
Lab Requirements	1
What you should be able to do	1
Introduction	2
Exercise Instructions	2
Part 1: Install WebSphere Process Server V6	3
Troubleshooting	11
What you did in this exercise	12

What this exercise is about

This exercise is about showing you a visual step-through of how to install the WebSphere Process Server V6 on Windows®.

Lab Requirements

List of system and software required for the student to complete the lab.

- Hardware Requirements
 - Pentium® III 800 MHz processor minimum (higher is recommended)
 - 512 MB RAM minimum (1 GB RAM is recommended)
 - Minimum 990 MB free disk space for installation (includes SDK)
 - TEMP directory must have at least 1 GB free

What you should be able to do

At the end of this lab you should be able to:

- Install WebSphere Process Server V6.0

Introduction

The WebSphere Process Server V6 is built upon the WebSphere Application Server v6 Network Deployment version. Therefore, the installation of WebSphere Process Server is very similar to WebSphere Application Server installation. However, since WebSphere Process Server adds to the WebSphere Application Server Network Deployment installation, WebSphere Process Server has a larger footprint on the hard-drive.

Exercise Instructions

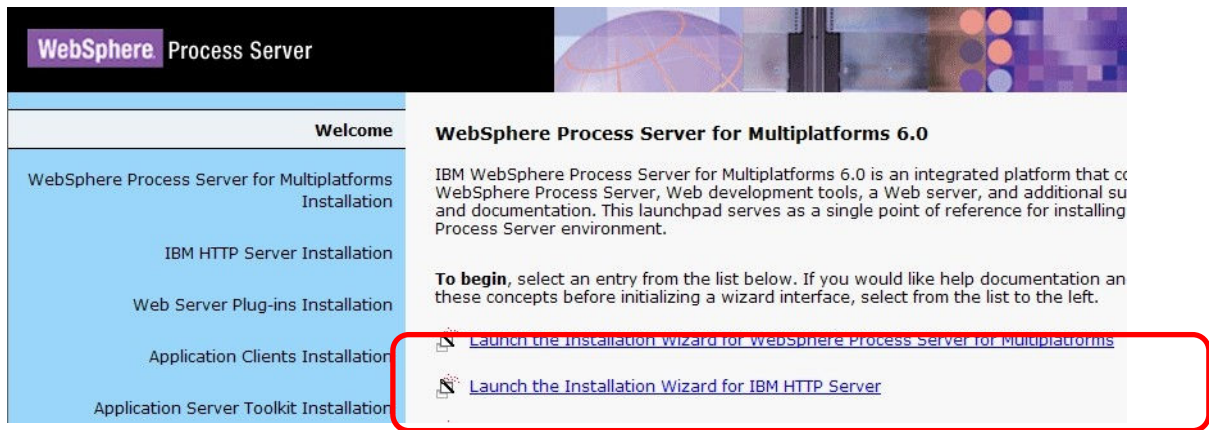
Some instructions in this lab may be Windows operating-system specific. If you plan on running the lab on an operating-system other than Windows, you will need to run the appropriate commands, and use appropriate files (.sh vs. .bat) for your operating system. The directory locations are specified in the lab instructions using symbolic references, as follows:

Reference Variable	Windows Location	AIX® or UNIX® Location
<WPS_HOME>	C:\WebSphere\ProcServer	
<LAB_FILES>	C:\Labfiles60	
<TEMP>	C:\temp	

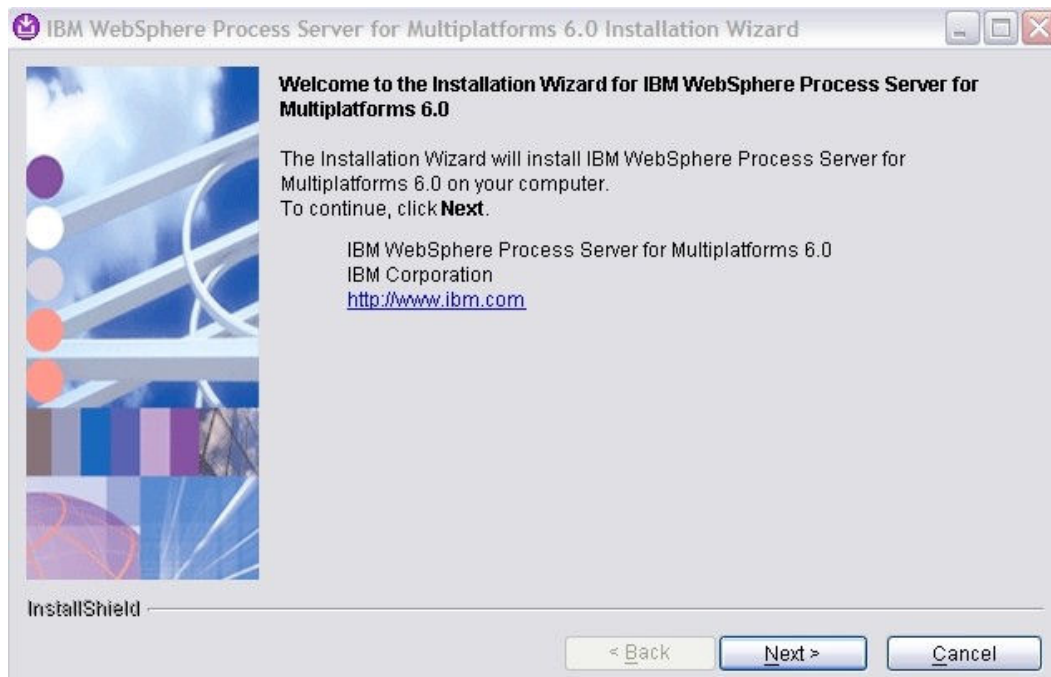
Windows users note: When directory locations are passed as parameters to a Java™ program such as EJBdeploy or wsadmin, it is necessary to replace the backslashes with forward slashes to follow the Java convention. For example, C:\LabFiles60\ would be replaced by C:/LabFiles60/

Part 1: Install WebSphere Process Server V6

- ___ 1. Prepare for install
 - ___ a. Unzip the **wbi.cd.6000.windows.ia32.zip** file onto the target system in a <TEMP> directory.
 - ___ b. Insert CD and open the CD drive from Windows Explorer or My Computer (example - D:/)
- ___ 2. Run **launchpad.exe** or **launchpad.bat** from the root directory (either in <TEMP> directory or root directory of CD drive)
- ___ 3. Select the first option, **Launch the Installation Wizard for WebSphere Process Server for Multiplatforms**



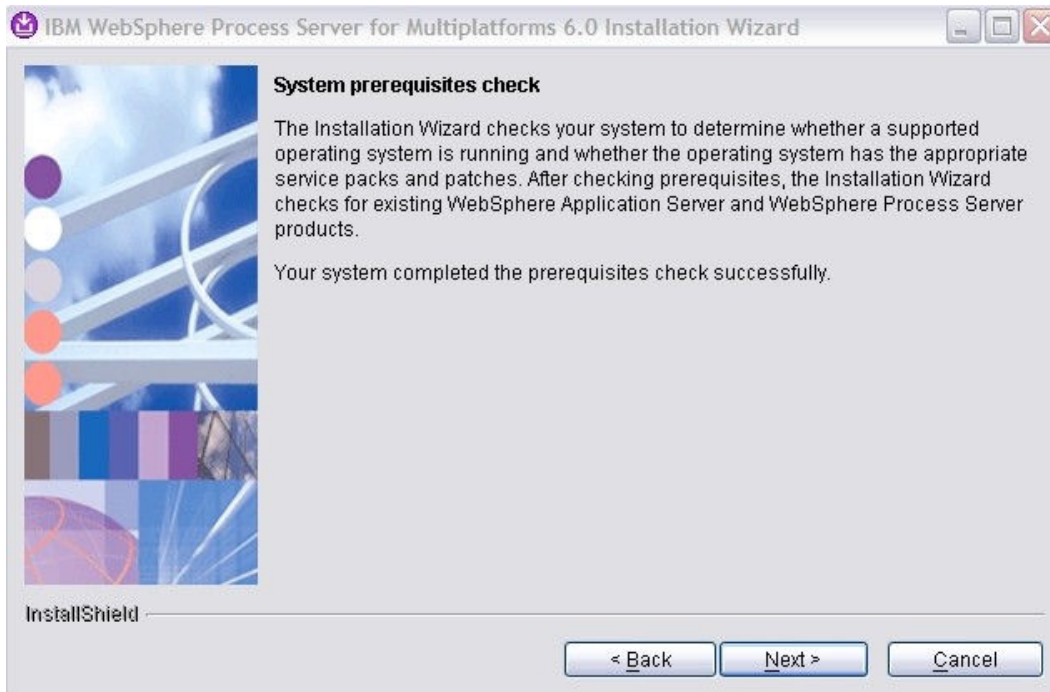
- ___ 4. In the Welcome window, click **Next** to continue



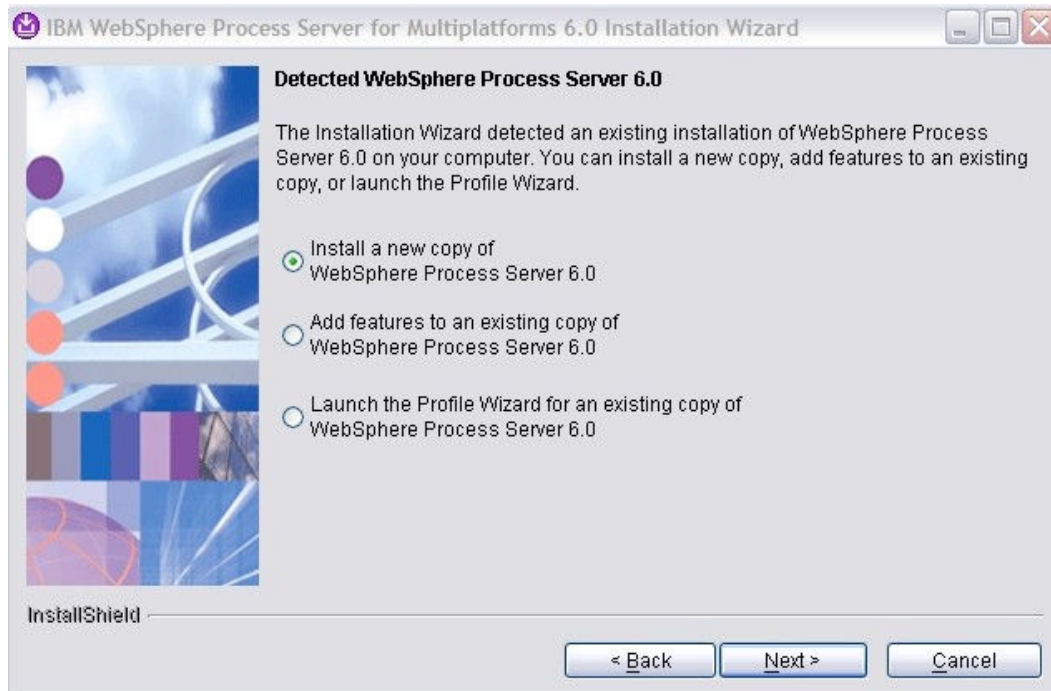
5. In the License agreement window, select the radio button next to **I accept the terms in the license agreement** and click **Next** to continue



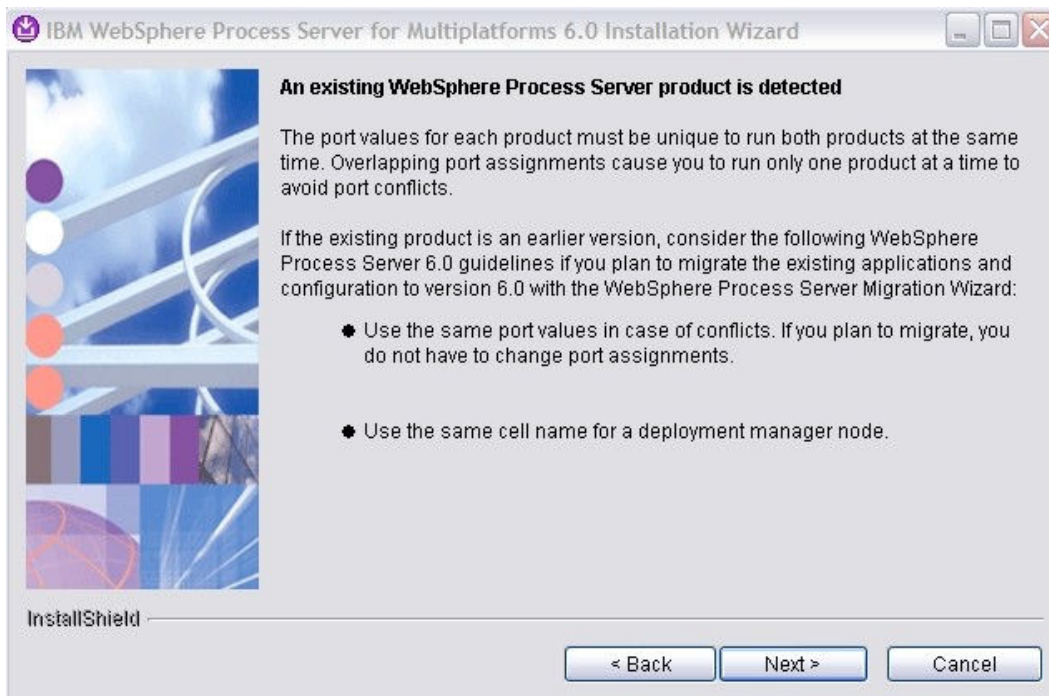
6. In the next window a system prerequisite check is performed. If successful, click **Next** to continue. If not, read the error message displayed about which prerequisite is not being fulfilled and fix (that is, need more memory, more hard-drive space, administrator rights for WebSphere Process Server installation)



7. If you already have an existing installation of WebSphere Application Server, then you would see the following screen where you would have a choice of either installing a new copy of WebSphere Application server or you can choose to install the features on your existing installation. The default is recommended, to **“Install a new copy of WebSphere Process Server 6.0”**.

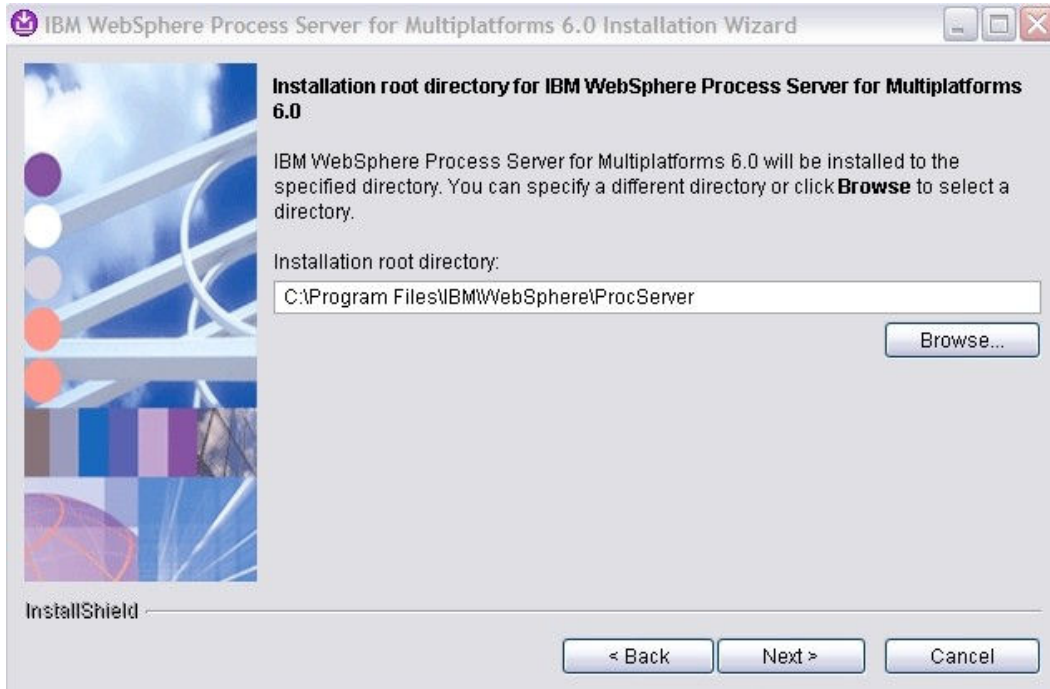


**Note: you may receive the dialogue window below if you have a same version of WebSphere Application Server or WebSphere Process Server on the machine you are installing WebSphere Process Server on...



Click **Next** through these screens. You will need to change ports and default install location in order to have 2 WebSphere Process Servers installed to one machine (ex: As in the case of WebSphere Integration Developer installed which installs a full version of WebSphere Process Server as a test environment).

- ___ 8. In the next window, provide the location where you want to install the WebSphere Process Server. Click **Next** to continue

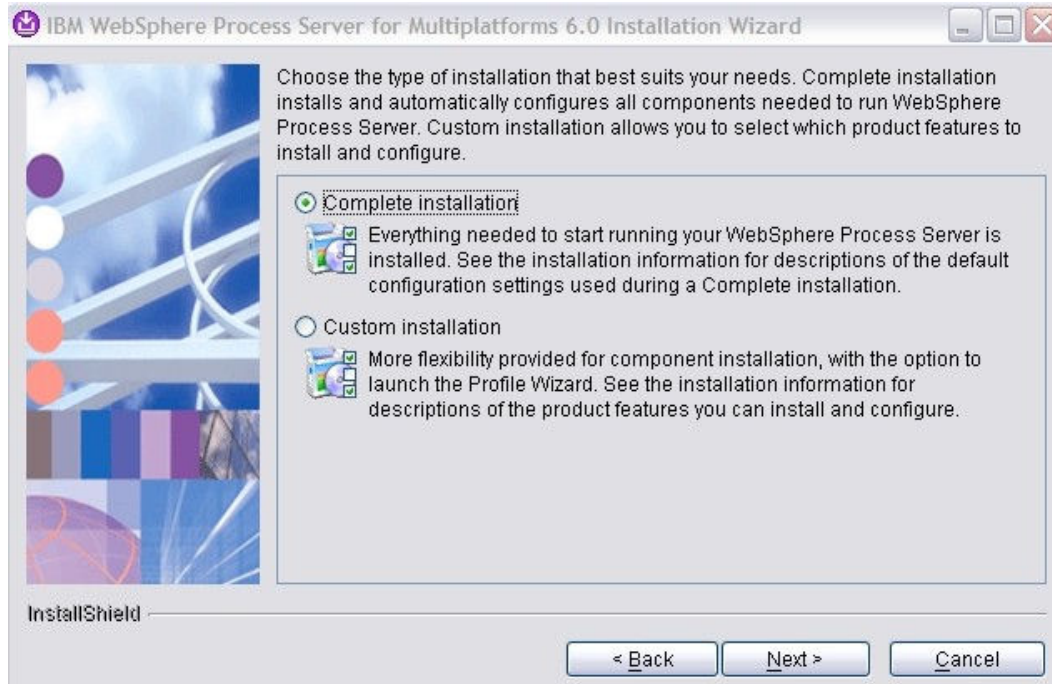


*Note: It is highly recommended to install in a location that does not have spaces in the path and is very short. For instance, you could install to the location C:/WebSphere/ProcServer or C:/WPS60.

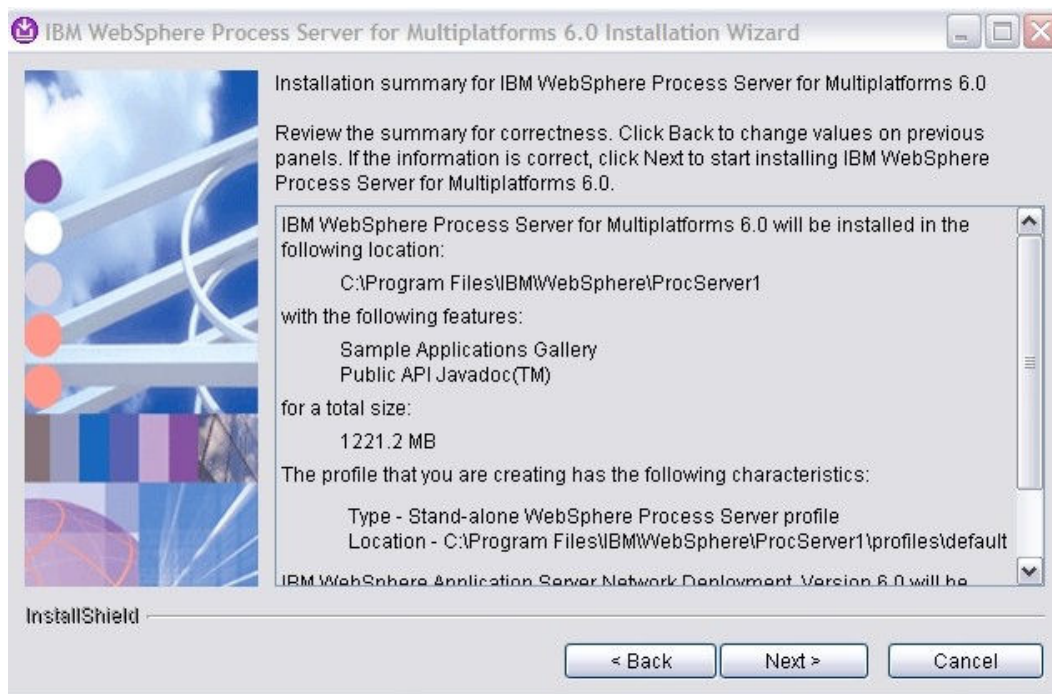
- ___ 9. The next window lets you choose the type of installation. Complete Installation is the default.
- ___ a. If you choose **Complete installation**, Sample Applications Gallery are Public API JavaDoc are installed. The complete installation also installs a default profile (named default).
 - ___ b. If you choose **Custom installation**, Sample Applications Gallery are Public API JavaDoc are options, along with two deprecated technologies, Business Rule Beans (replaced by RuleSets and Decision Tables) and Extended Messaging.

Running the Custom Installation does not set up a default profile for you, but ends with an option to run the profile wizard in order to create your own WebSphere Process Server profile (Deployment Manager Profile, Custom Profile, or Stand-alone WebSphere Process Server Profile). The profile wizard allows you to set options like profile name, profile location, domain and hostname, ports, along with Process Server information like Service Component Architecture (SCA), Common Event Infrastructure (CEI), Business Choreographer, Application Scheduler, and Databases.

Leave the radio button on **Complete Installation** and click **Next** to continue.

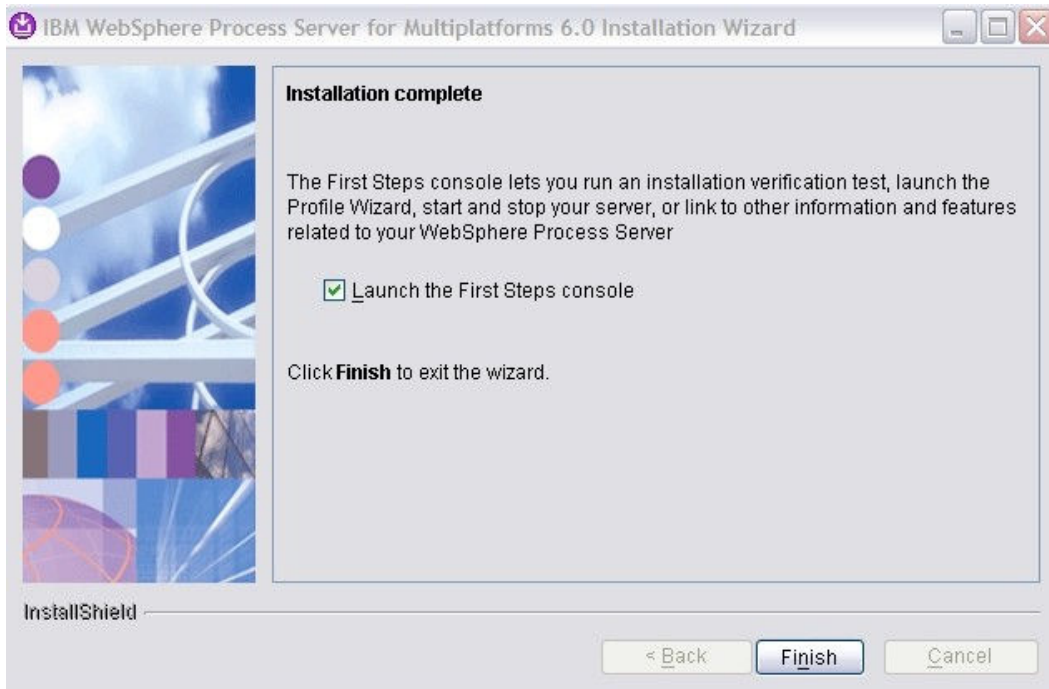


10. The next window summarizes the features being installed and the location of install. Click **Next** to start the install.



****Note:** This will take some time to install all the pieces. Remember that the WebSphere Process Server is WebSphere Application Server - Network Deployment version with more plug-ins on top.

11. Click **Finish** when the installation is completed.
A WebSphere Process Server will now be available to be started under **Start > Programs > IBM WebSphere > Process Server v6.0**. A **default profile** was created during install, so you may want to run the Profile Creation Wizard from the above mentioned program location to create a new profile.



Troubleshooting

If you encounter installation problems there are a few things to look out for:

- If you have had a previous version of WebSphere Process Server installed on the system (for example, from the Tech Preview), check for the following:
 - There is a folder that is created during the installation of WebSphere Process Server that sometimes can be the source of installation problems, particularly if there was a previous version of WebSphere Process Server on the system. Try deleting that previous installation folder before installing WebSphere Integration Developer.
 - If you have had a previous installation of WebSphere Integration Developer V6.0 you may need to clean up the vpd.properties file under the Windows directory (C:\WINNT or C:\WINDOWS). Removing all of the lines with the prefix "wid_" should be sufficient.
- If problems occur, go to <install_root_directory>/logs/logs.txt to see the trace log of installation errors.

What you did in this exercise

This exercise demonstrated how to install WebSphere Integration Developer V6.0.