



IBM Software Group

# IBM WebSphere® Enterprise Service Bus V6.1 IBM WebSphere Process Server V6.1

## *Installation and profile management*



@business on demand.

© 2008 IBM Corporation  
Updated March 18, 2008

This presentation covers the installation process for WebSphere Enterprise Service Bus V6.1 and WebSphere Process Server V6.1.

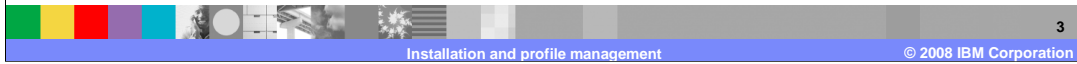
## Goals

- Overview and initial install information
- Installation and Profile management flow
  - ▶ Each installation screen
- Uninstall
- Installation process
  - ▶ WebSphere Enterprise Service Bus
  - ▶ WebSphere Process Server V6.1

The goal is to provide an overview of initial installation information, then step through an installation and profile management creation flow discussing information on each installation screen. The silent install and uninstalling the product will also be discussed. The installation process is now common for the WebSphere Enterprise Service Bus and the WebSphere Process Server V6.1. From this point forward, all slides represent the installation for both the WebSphere Enterprise Service Bus and the WebSphere Process Server. Only the very few differences are pointed out.

## Agenda

- Installation overview
- New installation of V6.1
- Summary



This section provides an overview of the installation process.

## Installation overview

- V6.1 Installer
  - ▶ Based on InstallShield MultiPlatform
  - ▶ Supports interactive and 'silent' installation
  - ▶ Common installation process
    - WebSphere Enterprise Service Bus
    - WebSphere Process Server
- Profile management tool
  - ▶ Basic profile creation - typical
  - ▶ Deployment environment installation
    - Security
    - Three network deployment topologies



The WebSphere Process Server V6.1 installer is an InstallShield MultiPlatform based installer that supports interactive and silent installs. The WebSphere Enterprise Service Bus installation is a subset of the installation process but follows the same flow as the installation of the WebSphere Process Server. When installing the WebSphere Process Server, the WebSphere Enterprise Service Bus is included as part of that installation.

The installation process will run the profile management tool as part of the installation. During the installation panel flow there are settings that are used for the creation of a profile if a profile type is selected. The typical installation allows the creation of stand-alone, deployment manager or custom profiles. The deployment environment installation requires that security is enabled and allows the selection of one of the three basic network deployment topology types.

## Section

# ***New installation of V6.1***

This section covers the installation process.

## Typical flow

- Typical flow of install process
  - ▶ Launchpad screen
  - ▶ Welcome screen
  - ▶ License acceptance screen
  - ▶ System prerequisites check screen
  - ▶ Existing server detection screen
  - ▶ Existing WebSphere Application Server or WebSphere Application Server Network Deployment detection screen
  - ▶ Installation type selection screen
  - ▶ Feature selection screen
  - ▶ Installation root directory screen
  - ▶ Server environment
  - ▶ Enable security
  - ▶ Installation summary screen
  - ▶ Finish screen

Once you select the WebSphere Process Server installation from the launchpad screen, a typical sequence of V6.1 installation screens is shown here. The first one is the welcome screen, which always leads into the license acceptance screen. Then the installer will do a system prerequisites check similar to WebSphere Application Server installation. The installer will check for existing WebSphere Application Server or WebSphere Application Server Network Deployment or WebSphere Process Server installations. As the installation flows through each panel, installation options for feature selection, installation root and the server environment must be entered. The security panel has security enabled as the default which requires a username and password to be entered. The installation summary reviews the previous selections and allows backward movement to make any required changes.

## Runtime installation features

- Full 6.1 Installations based on the common installation engine
  - ▶ SOA Core
  - ▶ BPC
  - ▶ WebSphere Enterprise Service Bus
  - ▶ WebSphere Process Server
- Trade up installations
  - ▶ SOA Core -> BPC
  - ▶ SOA Core -> WebSphere Enterprise Service Bus
  - ▶ SOA Core -> WebSphere Process Server
  - ▶ BPC -> WebSphere Process Server
  - ▶ WebSphere Enterprise Service Bus -> WebSphere Process Server
  - ▶ No BPC -> WebSphere Enterprise Service Bus or WebSphere Enterprise Service Bus -> BPC since these are not subsets or supersets of each other
- Install WebSphere Application Server Network Deployment V6.1 or use existing V6.1 installation
- Install as a non-root user
- Profile creation and augmentation
- Install latest documentation and Eclipse viewer

Each of these component installations is based on the Common Install Engine. This makes it possible to upgrade from a subset installed component to a component that contains that subset. The most common scenario might be an installed WebSphere Enterprise Service Bus being upgraded to support the WebSphere Process Server as the need for applications becomes a requirement. During the installation of any of these components a WebSphere Application Server for Network Deployment is installed unless an existing V6.1 application server is already installed can be used. Installation as a non-root user is now available on all components and platforms and the profile management tool is called directly through extensions for profile creation and augmentation during installation. In addition to the component install enhancements, the latest documentation and the Eclipse viewer can be installed over the internet from the product launchpad.

IBM Software Group IBM

## Launchpad options

**IBM HTTP Server**  
A Web server based on the Apache HTTP server.

→ **Web server plug-ins**  
Software that forwards HTTP requests from your Web server to your application server.

→ **Application clients**  
Various application programming models for your application server.

→ **Application Server Toolkit**  
Basic assembly and deployment tooling for publishing to your application server.

→ **IBM Message Service Client for C/C++**  
Supports messaging applications written in C or C++.

→ **IBM Message Service Client for .NET**  
Supports .NET messaging applications.

IBM WebSphere Process Server 6.1

WebSphere Process Server Launchpad

**Welcome**

WebSphere Process Server installation

Message service clients installation

Additional software installation

IBM Update Installer for WebSphere Process Server installation

IBM Installation Factory for WebSphere Process Server installation

IBM Eclipse Help System for WebSphere Process Server installation

IBM Support Assistant installation

Exit

**Welcome**

IBM® WebSphere® Process Server for Multiple Applications is a platform for developing composite business process applications, providing business process automation and management technology, it is built on top of WebSphere Application Server Network Deployment. It also contains additional supporting software and documentation. This launchpad serves as a single point of reference for installing your WebSphere Process Server environment.

- [WebSphere Process Server installation](#)  
All you need to get WebSphere Process Server up and running.
- [Message service clients installation](#)  
Software that provides messaging capabilities in non-Java™ environments.
- [Additional software installation](#)  
Additional software to support the application server.
- [IBM Update Installer for WebSphere Software installation](#)  
A tool that installs updates to WebSphere software.
- [IBM Installation Factory for WebSphere Process Server](#)  
Information on creating customized installation packages.
- [IBM Eclipse Help System for WebSphere Process Server installation](#)  
A tool to install the Eclipse Viewer (IEHS) and product documentation locally.
- [IBM Support Assistant installation](#)  
A tool to install the IBM Support Assistant, which helps you resolve questions and problems with IBM software products.

[WebSphere Process Server Web site](#)  
Further information and support.

[WebSphere Integration Developer Web site](#)  
To realize the full benefit of WebSphere Process Server, you are recommended to use WebSphere Integration Developer, which is a separately orderable product.

8

Installation and profile management © 2008 IBM Corporation

The launchpad provides additional installation options that support the WebSphere Process Server installation, which is launched from here. The stand-alone message clients for C and C++ or .NET are available. Additional software installation provides the IBM HTTP server, Web server plug-ins, application clients and the application server toolkit. The creation of customized installation packages is supported using the IBM Installation Factory. Documentation and support are provided through the Eclipse help system, the IBM Support Assistant and through links to the product Web sites.



## System prerequisites check



### System prerequisites check

**Passed:** Your operating system completed the prerequisites check successfully.

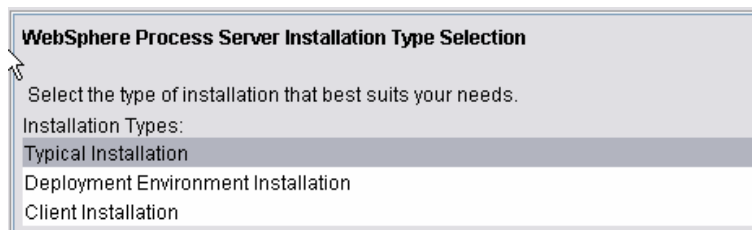
The installation wizard checks your system to determine whether a supported operating system is installed and whether the operating system has the appropriate service packs and patches.

- Prerequisite check similar to WebSphere Application Server install
  - ▶ Checks for supported OS levels
  - ▶ Checks for required fix packs, service packs or patches
  - ▶ Does not check for
    - Minimum memory or processor requirements
    - Minimum disk space requirements
    - Any other required software
  - ▶ Will allow installation to proceed after warning even if check fails

The welcome and license acceptance screens are self explanatory. On the System Prerequisite check screen, the installer does a prerequisite check similar to WebSphere Application Server installation, checking for supported OS levels, required fix packs, service packs or patches. However, it does not check for minimum memory or processor requirements, minimum disk space requirements, or any other required software at this time. Even if this check fails, installation is allowed to proceed.

## Installation type

- Typical – works like V6.0.2
- Complete deployment environment installation – Discussed in clustering
- Client – small footprint



The installation type panel allows selection of typical, deployment environment or a client installation. The typical installation works much like the V6.0.2 installation supporting a stand-alone server, a deployment manager, a custom profile to be used as a node, or none. The deployment environment allows the selection of one of three preconfigured Network Deployment topologies. This installation type is discussed in detail in the clustering presentations. The client installation provides a lightweight client environment used to access applications running in the WebSphere Process Server. The client installation is not supported in the WebSphere Enterprise Service Bus installation.

## Installation detections

- Installation will detect existing installations of:
  - ▶ WebSphere Application Server
  - ▶ WebSphere Application Server Network Deployment
  - ▶ WebSphere Process Servers or WebSphere Enterprise Service Bus
- You can choose to
  - ▶ Install a new copy of V6.1
  - ▶ Add new features to existing installation (incremental installation)
    - Feature selection screen presented
    - Previously installed features is listed as “(installed)”
    - Previously installed features cannot be uninstalled, even if the check box is cleared
  - ▶ Launch the profile management tool for an existing installation to create a new profile or augment an existing profile

In the installation detections screen, the installer will detect existing installations of WebSphere Application Server, WebSphere Application Server Network Deployment, and WebSphere Process Server. You can choose to install a new copy of WebSphere Process Server 6.1, add new features to an existing installation (incremental installation), or launch the Profile Wizard for an existing installation to create a new profile or augment an existing profile.

With the incremental installation, the feature selection screen is presented and previously installed features are listed as “(installed)” though they cannot be uninstalled, even if the check box is cleared.

## Features selection

- Samples
- WebSphere Process Server deprecated features

### Features Selection

Select IBM WebSphere Process Server features to install. See the information center for descriptions of the features.

- Business Rule Beans (deprecated)
- Extended Messaging Service(deprecated)
- WebSphere Process Server samples

- WebSphere Enterprise Service Bus

### Features Selection

Select IBM WebSphere Enterprise Service Bus features to install. See the information center for descriptions of the features.

- WebSphere Enterprise Service Bus samples

The custom installation allows you to select four features. The JavaDoc for the usage APIs is installed by default. Both Extended Messaging and Business Rule Beans will run on 6.1, but do not have creation support. Selecting Samples will also cause WebSphere Network Deployment Samples to be installed. The WebSphere Enterprise Service Bus installation only allows you to select samples.


## Installation root directory

- Install close to the root directory
  - ▶ Short installation path is less likely to run into the 256 character path limit
- Try not to use spaces or non-letter characters in the path name
- Examples:
  - ▶ C:\ProcServer
  - ▶ C:\WPRCS61

At the Installation Root directory screen, you are prompted for the WebSphere Process Server installation root. Install as close to the system root directory as possible. With a shorter path, you are less likely to run into the 256 character path limit. Try not to use spaces or non-alpha characters in the path name.

IBM Software Group IBM

## Environments



**WebSphere Process Server Environments**  
 Select the type of WebSphere Process Server environment to create during installation. Although only one environment type can be chosen, additional profiles can be created after installation using the Profile Management Tool.

- Stand-alone server
- Deployment manager
- Custom
- None

- Installation includes
  - ▶ WebSphere Application Server Network Deployment
  - ▶ WebSphere Enterprise Service Bus
  - ▶ WebSphere Process Server
- Environments
  - ▶ Stand-alone server
  - ▶ Deployment manager
  - ▶ Custom
    - Federate node
    - Deployment manager security
  - ▶ None

**Enable Administrative Security**  
 Choose whether to enable administrative security. To enable administrative security, you must specify a user name and password to log in to the administrative console. A user is created in a repository within the process server. After installation finishes, you can add more users, groups, and repositories.

Enable administrative security.

User name:

Password:

Confirm password:

**Federation**  
 Specify the host name or IP address and the SOAP port number for an existing deployment manager. Federation can occur only if the deployment manager is running and the SOAP connector is enabled. Otherwise, choose to federate the node later.

Deployment manager host name or IP address:

Deployment manager SOAP port number (8879 is the default):

**Deployment manager authentication**  
 If administrative security is enabled on the deployment manager, provide a user name and password that can be authenticated.

User name:

Password:

Federate this managed node later using the `addNode` command.

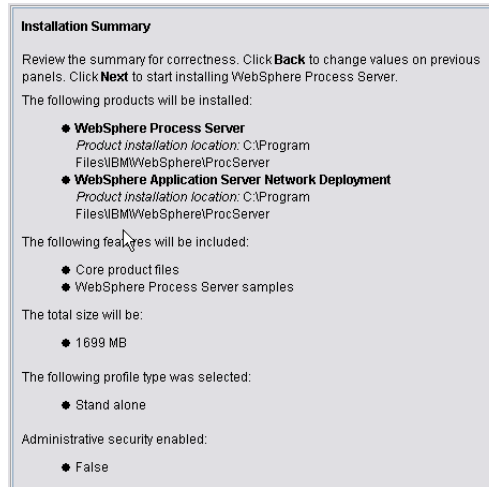
Installation and profile management 14 © 2008 IBM Corporation

If you are installing a stand-alone WebSphere Process Server V6.1, the installation includes WebSphere Application Server Network Deployment V6.1 and will also include an installation of the WebSphere Enterprise Service Bus. All installations are installed at the same location install root.

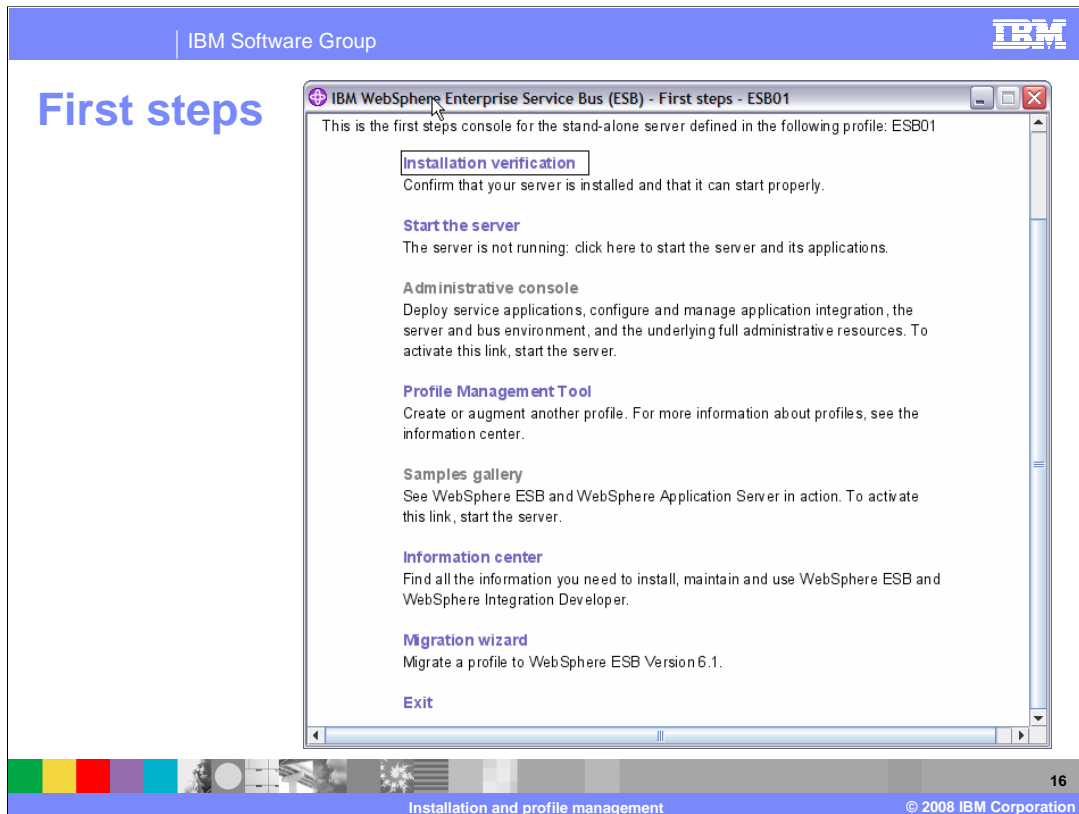
A stand-alone server, deployment manager or custom environment can be selected to create a profile during the installation. If none is selected, then no profile is created and the profile management tool must be run to create a profile before the server can be used. Both the Stand-alone server and the deployment manager server have security enabled by default. The custom selection allows the node to be federated into a Network Deployment configuration by specifying the deployment manager with the user-name and password. There is also an option to federate this custom node later after the installation.

## Installation summary screen

- Features to be installed
- Checks for available disk space
- Checks available temporary disk space on UNIX® and Linux® systems
  - ▶ Does not check for this on Windows®
- Profile type
- Security enabled



The installation summary screen lists the products and features to be installed and checks for available temporary disk space on UNIX and Linux systems. This check is not performed on Windows systems. Clicking on next will start the installation with a progress bar being shown. A final panel is shown showing the status of the installation. Clicking on finish will open the first steps panel.



The first steps panel is a single place to control, manage and configure the server. The administrative console can be launched into a browser which allows application deployment, configuration and management of the server environment. Starting the profile management tool will allow additional servers to be created or enhancements to be made to the existing server. Access to sample applications and documentation in the information center is also provided. The migration wizard allows the profile, applications and database information to be migrated from a V6.0 installation.



## Silent installation

- Install wizard and profile wizard can be invoked silently
- Silent installation can be linked to silent profile wizard invocation
- Sample response file is shipped on the CD and ESD image
  - ▶ Supports custom install only
  - ▶ Can be easily modified

There is silent installation support for WebSphere Process Server V6.1. A sample response file is shipped on the CD and ESD image, allowing you to create custom silent installation scripts. It supports custom installation only and can be easily modified.

## Uninstalling

- For WebSphere Process Server stand-alone installations (that were not installed on any existing WebSphere Application Server or WebSphere Application Server Network Deployment):
  - ▶ Provides option to uninstall the underlying WebSphere Application Server or WebSphere Application Server Network Deployment
  - ▶ By default, it will uninstall the underlying WebSphere Application Server or WebSphere Application Server Network Deployment
  - ▶ If the option is to keep the underlying install of WebSphere Application Server or WebSphere Application Server Network Deployment, any profiles that have been augmented by WebSphere Process Server are unaugmented, as long as WebSphere Process Server is the last augments
  - ▶ If the option is to uninstall the underlying WebSphere Application Server or WebSphere Application Server Network Deployment, all profiles are first unaugmented and then deleted
- Uninstall can be run silently

The uninstaller allows you to uninstall the underlying WebSphere Application Server or WebSphere Application Server Network Deployment. The underlying WebSphere Application Server Network Deployment can be selected for uninstallation by default if WebSphere Process Server was an umbrella installation. If you choose not to uninstall the underlying WebSphere Application Server, any profiles that have been augmented by WebSphere Process Server can be unaugmented as long as WebSphere Process Server is the last augments. If you choose to uninstall the underlying WebSphere Application Server, all profiles are first unaugmented and then deleted. The uninstall process can also be run silently.

## Section

# *Summary*

This section summarizes the topics discussed in this presentation.

## Summary

- Discussed Installation of WebSphere Process Server V6.1
  - ▶ Covered an overview and initial install information
  - ▶ Stepped through installation flow discussing information on each installation screen and uninstall
- Profile management tool
  - ▶ Typical installation
  - ▶ Deployment environment installation

This presentation covered the WebSphere Process Server V6.1 installation. It also covered initial installation information and stepped through the installation flow. You saw how to update an existing installation and how to uninstall. Troubleshooting topics like known limitations, best practices, and debugging and logging information were also covered. The profile management tool was shown as part of the installation but can also be run separately to create additional profiles. The deployment environment creation option in the profile management tool is discussed in the clustering section.

## Feedback

### Your feedback is valuable

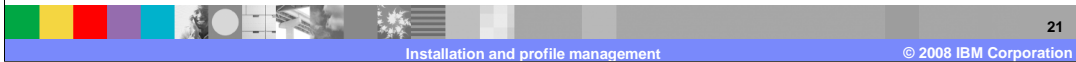
You can help improve the quality of IBM Education Assistant content to better meet your needs by providing feedback.

- Did you find this module useful?
- Did it help you solve a problem or answer a question?
- Do you have suggestions for improvements?

Click to send e-mail feedback:

[mailto:iea@us.ibm.com?subject=Feedback\\_about\\_WBIV61\\_WESBWPSInstallationPMT.ppt](mailto:iea@us.ibm.com?subject=Feedback_about_WBIV61_WESBWPSInstallationPMT.ppt)

This module is also available in PDF format at: [..\\WBIV61\\_WESBWPSInstallationPMT.pdf](..\\WBIV61_WESBWPSInstallationPMT.pdf)



You can help improve the quality of IBM Education Assistant content by providing feedback.

## Trademarks, copyrights, and disclaimers

The following terms are trademarks or registered trademarks of International Business Machines Corporation in the United States, other countries, or both:

IBM            WebSphere

Windows, and the Windows logo are registered trademarks of Microsoft Corporation in the United States, other countries, or both.

UNIX is a registered trademark of The Open Group in the United States and other countries.

Linux is a registered trademark of Linus Torvalds in the United States, other countries, or both.

Product data has been reviewed for accuracy as of the date of initial publication. Product data is subject to change without notice. This document could include technical inaccuracies or typographical errors. IBM may make improvements or changes in the products or programs described herein at any time without notice. Any statements regarding IBM's future direction and intent are subject to change or withdrawal without notice, and represent goals and objectives only. References in this document to IBM products, programs, or services does not imply that IBM intends to make such products, programs or services available in all countries in which IBM operates or does business. Any reference to an IBM Program Product in this document is not intended to state or imply that only that program product may be used. Any functionally equivalent program, that does not infringe IBM's intellectual property rights, may be used instead.

Information is provided "AS IS" without warranty of any kind. THE INFORMATION PROVIDED IN THIS DOCUMENT IS DISTRIBUTED "AS IS" WITHOUT ANY WARRANTY, EITHER EXPRESS OR IMPLIED. IBM EXPRESSLY DISCLAIMS ANY WARRANTIES OF MERCHANTABILITY, FITNESS FOR A PARTICULAR PURPOSE OR NONINFRINGEMENT. IBM shall have no responsibility to update this information. IBM products are warranted, if at all, according to the terms and conditions of the agreements (for example, IBM Customer Agreement, Statement of Limited Warranty, International Program License Agreement, etc.) under which they are provided. Information concerning non-IBM products was obtained from the suppliers of those products, their published announcements or other publicly available sources. IBM has not tested those products in connection with this publication and cannot confirm the accuracy of performance, compatibility or any other claims related to non-IBM products.

IBM makes no representations or warranties, express or implied, regarding non-IBM products and services.

The provision of the information contained herein is not intended to, and does not, grant any right or license under any IBM patents or copyrights. Inquiries regarding patent or copyright licenses should be made, in writing, to:

IBM Director of Licensing  
IBM Corporation  
North Castle Drive  
Armonk, NY 10504-1785  
U.S.A.

Performance is based on measurements and projections using standard IBM benchmarks in a controlled environment. All customer examples described are presented as illustrations of how those customers have used IBM products and the results they may have achieved. The actual throughput or performance that any user will experience will vary depending upon considerations such as the amount of multiprogramming in the user's job stream, the I/O configuration, the storage configuration, and the workload processed. Therefore, no assurance can be given that an individual user will achieve throughput or performance improvements equivalent to the ratios stated here.

© Copyright International Business Machines Corporation 2008. All rights reserved.

Note to U.S. Government Users - Documentation related to restricted rights-Use, duplication or disclosure is subject to restrictions set forth in GSA ADP Schedule Contract and IBM Corp.