

IBM Software

# Impact2010

Comes to You

Enhancing Visibility, Flexibility, and Productivity  
with IBM's WebSphere SOA Connectivity and  
Integration Portfolio

Sekhar Raju, IBM



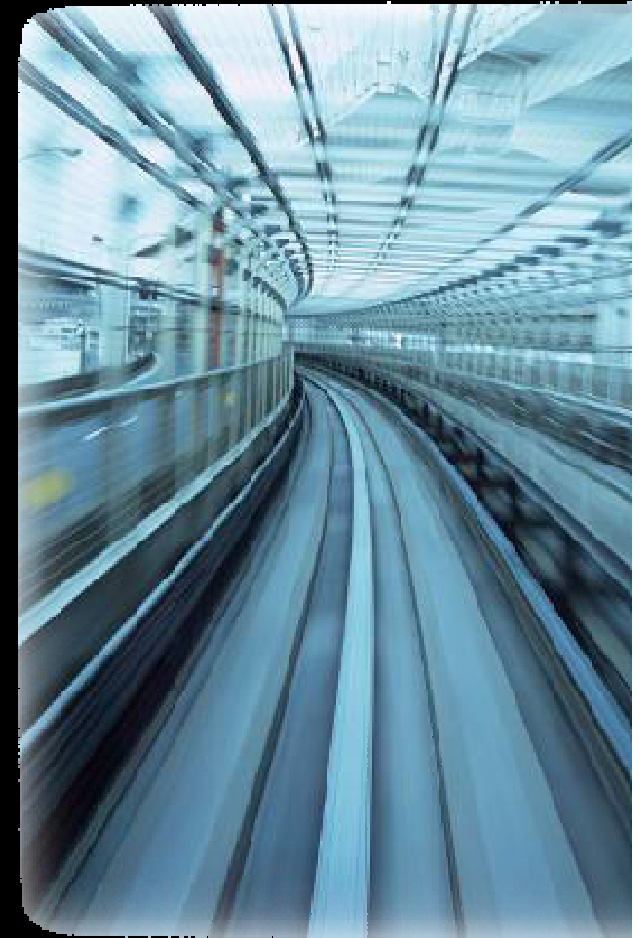
# Organizations face the opportunity of accelerating market shifts and broadening business networks

- Rising consumer expectations compel improvements in speed and personalization
- Rapid swings in economic and commodity markets highlight lack of adaptability
- Lower barriers to entry in a digital, flat world, enable fast and easy access by new competitors

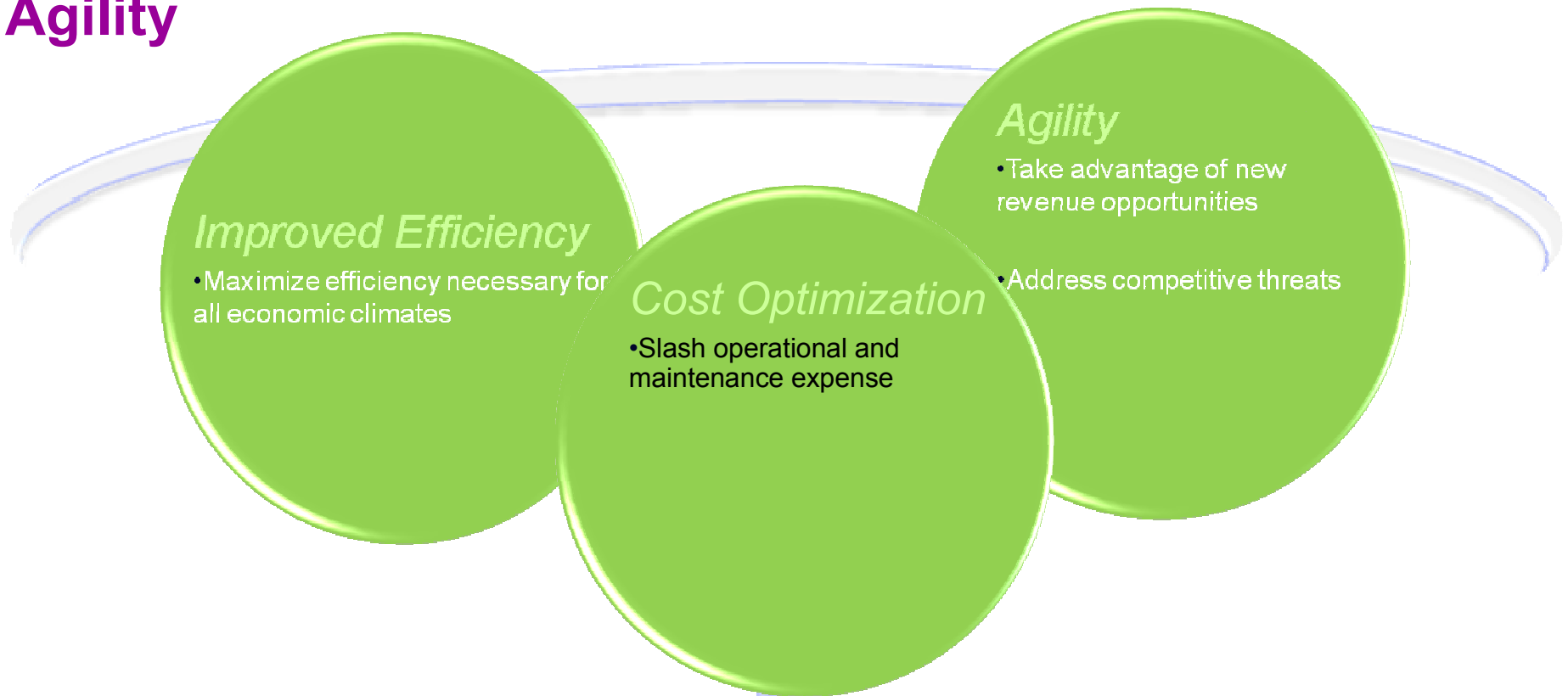
**The perceived business network** focuses on the challenges happening within a company's four walls ...



... but in reality the **business network** is much broader than just the relationships inside the business, and is changing rapidly



# Today's Business Imperatives, Cost Optimization & Agility

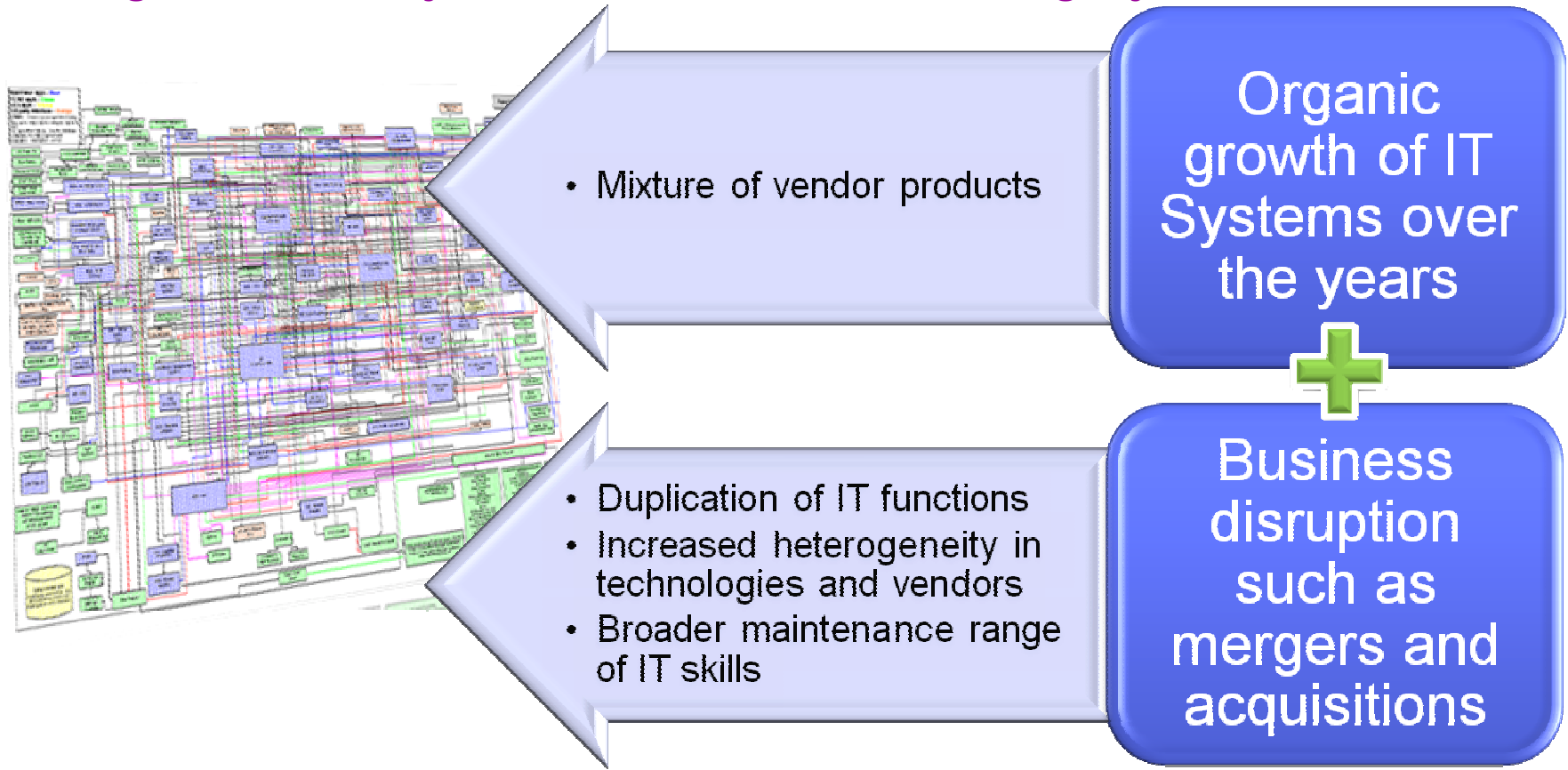


Survival & Success



# Common Enterprise wide IT Problems

*Resulting in Inefficiency, Inflated Costs and reduced agility*



Integration becomes the major cost and inhibitor in building a flexible IT infrastructure



## The Cost of Integration is a Major Factor of IT Budgets and Seriously Limits the Ability to Innovate

“Integration remains the number one IT priority; fully 60-70% of IT budgets are dedicated to it.”

Source: WebServices Journal

“According to analysts, over 70% of the IT budget is being spent on overcoming the limitation of current systems, while less than 30% is spent on acquiring new capabilities that can provide a competitive edge to the business.”

Source: IBM Research

“In 2005, 76% of I.T budgets were spent on maintenance, leaving only 24% for new investments.”

Source: Forrester Research

“Various surveys tell us that the typical enterprise is devoting over 80% of its applications budget to simply supporting normal business because of the complexity of making change.”

Source: CBDI

The Business Case for SOA



# Product Portfolio and Customer Scenarios



- ESB Messaging & Enrichment
  - Trusted messaging
  - Ultra-low latency, time-sensitive data feeds
  - ESB for fast ROI
  - ESB for broad-scale SOA



- Service Visibility & Governance
  - Service visibility and lifecycle governance
  - Policy management and runtime enforcement

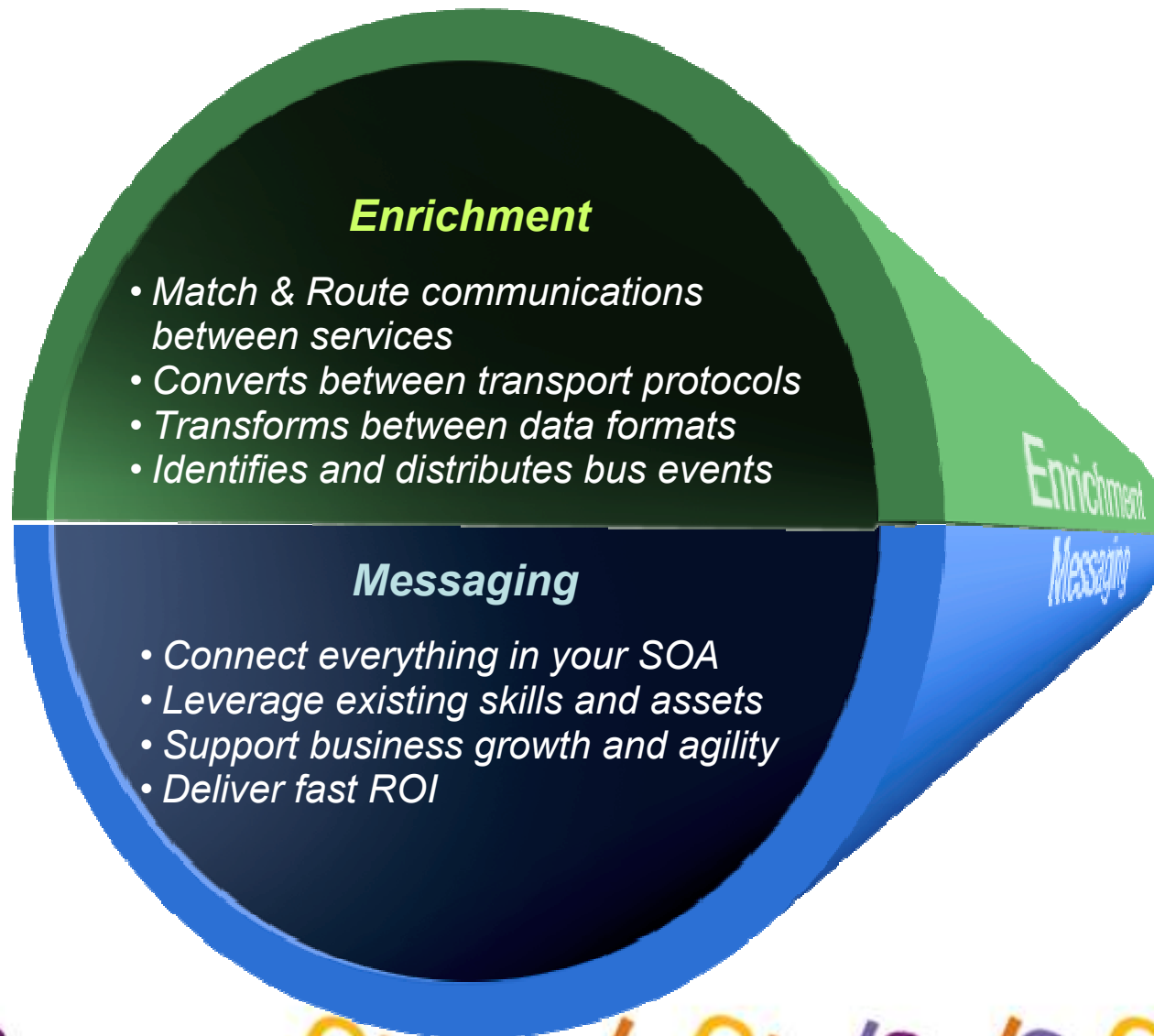


- Extend Connectivity to Partners & Customers
  - Payment processing in financial services
  - Managing your B2B transactions
  - Integrating with 3<sup>rd</sup> party applications, inside and outside the org





# A Closer Look at the ESB, Enrichment and Messaging



# Business Challenges in Connectivity

## **Dispersed Business Logic**

- Over time, separate organizational units build their own pieces of business logic
- Applications developed on many different platforms.
- Connecting these together can save a lot of time and money

## **Process Resilience**

- As systems become more integrated the reliance on and cost of failure of a process increases
- Removing dependencies and introducing redundancy reduces the risk of a failure

## **Process Scalability**

- Many applications and processes start out on a single system. And, as business grows, a single system is no longer sufficient to cope with demand
- A scalable architecture enables the capacity to be incrementally grown to meet increasing workloads

## **Process Flexibility**

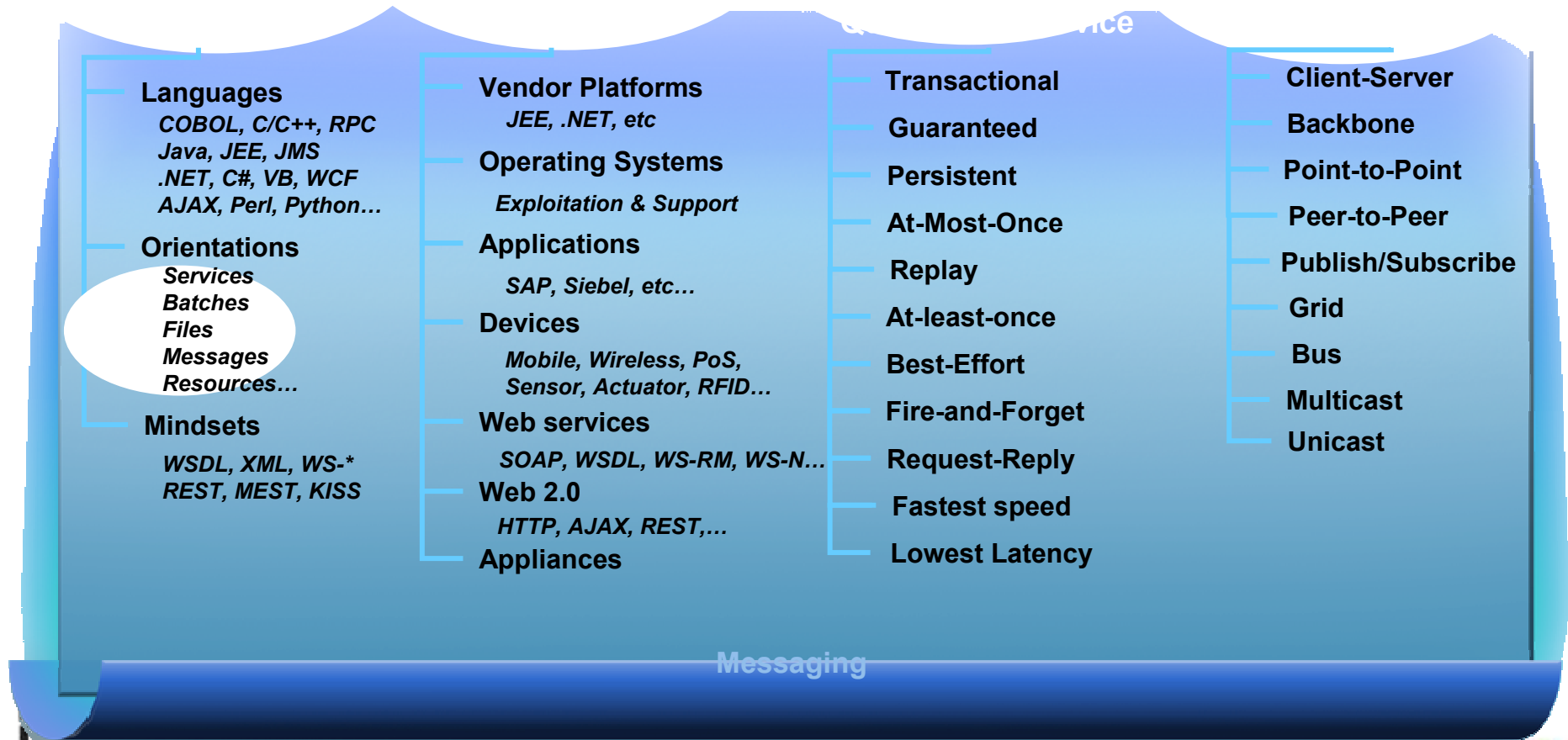
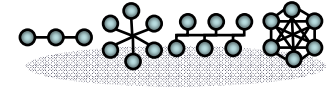
- A process originally designed for one purpose needs to change to meet new requirements
- Being able to respond rapidly to internal and external challenges gives a competitive advantage





# IBM WebSphere MQ Family

Addressing the full spectrum of transport requirements

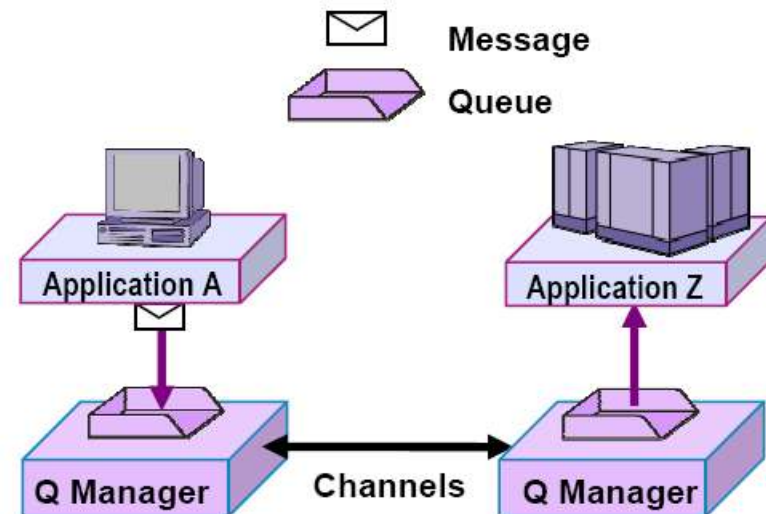


Comes to You



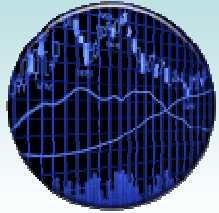
# WMQ Key Concepts

- **Messages** can be created from any source:
  - Data, Messages, Events, Files, Web service requests / responses
- Messages are moved asynchronously using **Queues**
  - Publish Subscribe
- Reliability
  - Assured delivery
- Ubiquitous
  - Breadth of support for platforms, programming, languages and API
- Loose application coupling
  - Location transparency
  - Time independence
  - Data transparency
  - Platform independence
- Scalability
  - Incremental growth
- Rapid development
  - Reduce Complexity
  - Ease of use



# Proven & Trusted Messaging

*Relied On By Over 10,000 Companies Globally*



## *Financial Markets*

- Delivering \$1 trillion transactions per day
- Exchanging £400B+ in messages



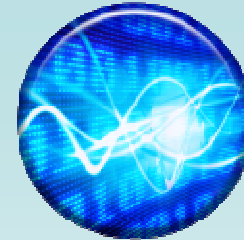
## *Government*

- Agency sends 675m messages per day
- ~ 7,500 agency users & 50,000 citizen transactions daily



## *Banking*

- \$7-\$35 trillion messaging traffic per day
- 213+ million messages daily



*“ We needed a single integration platform that would allow all our applications to access and share information and enable them to collaboratively process transactions based on common business rules.”*

Chief Architect,  
Health Insurance

*IBM – 16+ years of customer experience totaling 10's of billions of messages every day*



# Fifth Third Bank banks on Extreme Reliability

*With ESB Messaging and Enrichment*



## Banking customer Pains

- Increase availability for customer satisfaction
- Focus on becoming more dynamic and competitive

## Smarter Business Outcomes:

- Resilient, flexible systems built on standardized integrated infrastructure enabling speed to market for new customer services and offerings
- Efficiently leverage existing systems and data
- Millions of dollars in cost savings through IBM initiatives



## Why WebSphere Connectivity & Integration?

***“With IBM’s help, Fifth Third is working toward having an ‘on-demand’ infrastructure that gives us the flexibility to move resources—on-the-fly—to where we need them.”***

**– Jim Scott, CTO, Fifth Third Bank**

IBM Software  
**Impact2010**  
Comes to You



## How do most organizations move files today?

Most organizations rely on a mix of homegrown code, several legacy products and different technologies and even people!

- **FTP**

- Typically File Transfer Protocol (FTP) is combined with writing and maintaining homegrown code to address its Limitations

- **Why is FTP use so widespread?**

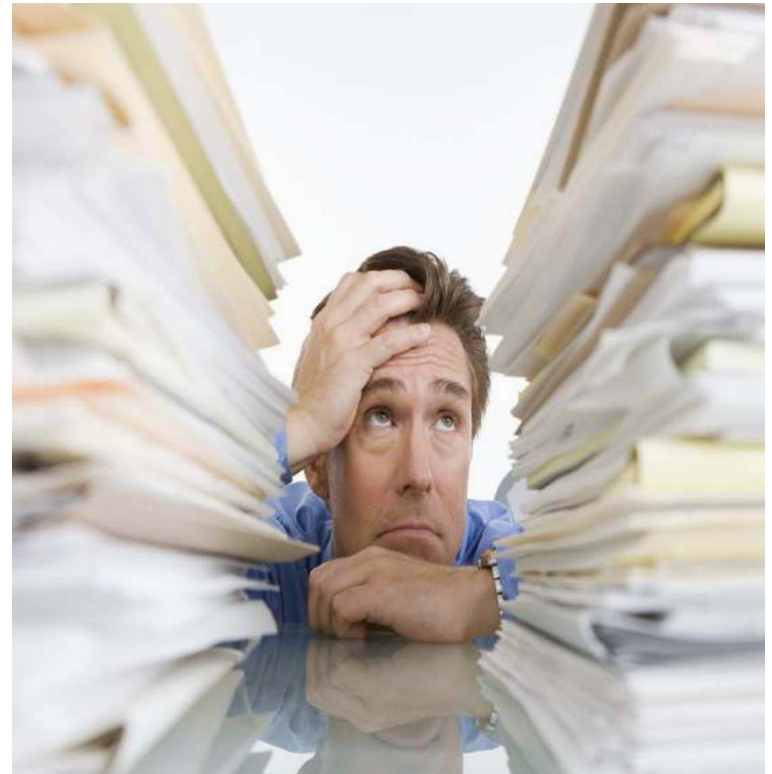
- FTP is widely available – Lowest common denominator
- Promises a quick fix – repent at leisure
- Simple concepts – low technical skills needed to get started
- FTP products seem “free”, simple, intuitive and ubiquitous

- **Legacy File Transfer products**

- A combination of products often used to provide silo solutions
- Often based on proprietary versions of FTP protocol
- Can't transport other forms of data besides files
- Usually well integrated with B2B but rarely able to work with the rest of the IT infrastructure – especially with SOA

- **People**

- From IT Staff to Business staff and even Security Personnel
- Using a combination of email, fax, phone, mail, memory keys...



# Shortcomings of Basic FTP

## Limited Reliability

- ❌ Unreliable delivery – Lacking checkpoint restart – Files can be lost
- ❌ Transfers can terminate without notification or any record – corrupt or partial files can be accidentally used
- ❌ File data can be unusable after transfer – lack of Character Set conversion

## Limited Flexibility

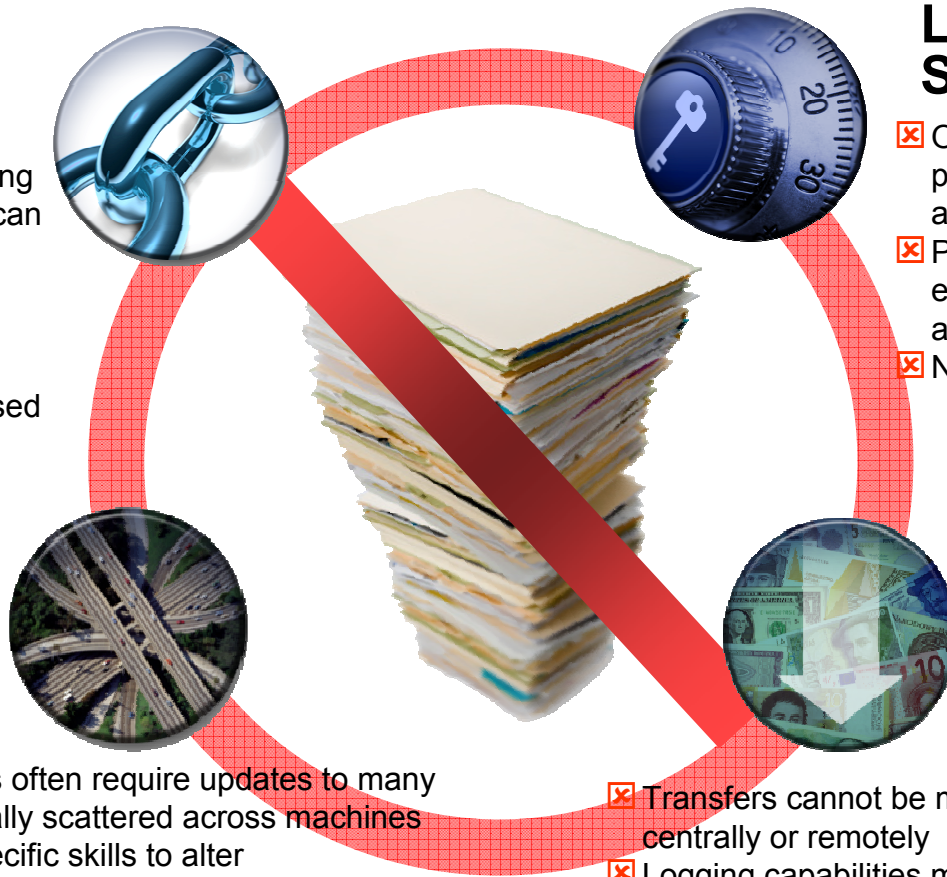
- ❌ Changes to file transfers often require updates to many ftp scripts that are typically scattered across machines and require platform-specific skills to alter
- ❌ All resources usually have to be available concurrently
- ❌ Often only one ftp transfer can run at a time
- ❌ Typically transfers cannot be prioritized

## Limited Security

- ❌ Often usernames and passwords are sent with file – as plain text!
- ❌ Privacy, authentication and encryption often not be available
- ❌ Non-repudiation often lacking

## Limited visibility and traceability

- ❌ Transfers cannot be monitored and managed centrally or remotely
- ❌ Logging capabilities may be limited and may only record transfers between directly connected systems
- ❌ Cannot track the entire journey of files – not just from one machine to the next but from the start of its journey to its final destination



# Why visibility of file movement is important

- Business
  - Need to know and report progress of business processes to customers, users
    - File transfer progress often linked to progress of business process
    - E.g. “Has my order been put through yet?”
  - Need to be able to demonstrate that sensitive information is being distributed properly
    - E.g. “Who else has seen this file?”
  - Need to be able to demonstrate that privileged information has not been altered without authorization
    - E.g. “Where did this file come from and who has changed it?”
  - Need to be able to comply with regulatory compliance obligations
    - E.g. “Can you show me exactly where your last 10 files came from and went?”
- IT
  - Need to be able to help the business answer their file-related queries to show their value
  - Need to be able to diagnose issues across their IT infrastructure and pin-point the source of problems
    - E.g. “Why weren’t these orders processed? Did they actually get delivered to the application or is the application at fault?”
  - Need to be able to diagnose issues with their IT systems
    - E.g. “Did the transfer fail because the disk is full?”



# What is Managed File Transfer?

*“Reliable, controlled, auditable movement of files around an organization”*

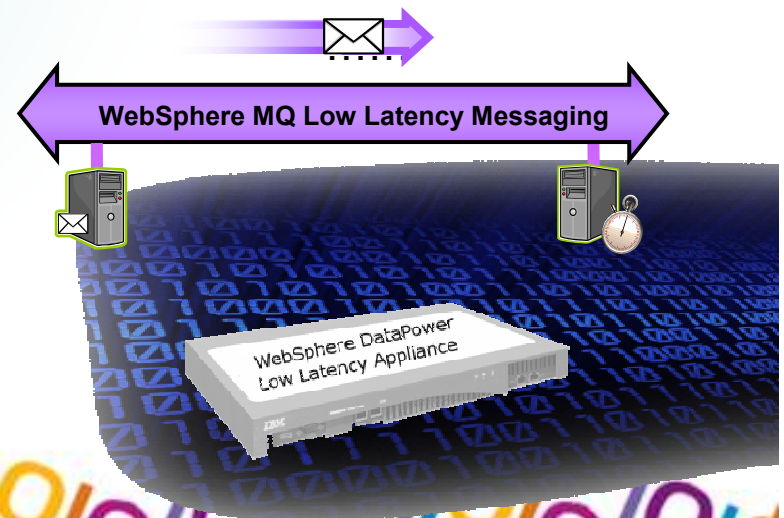
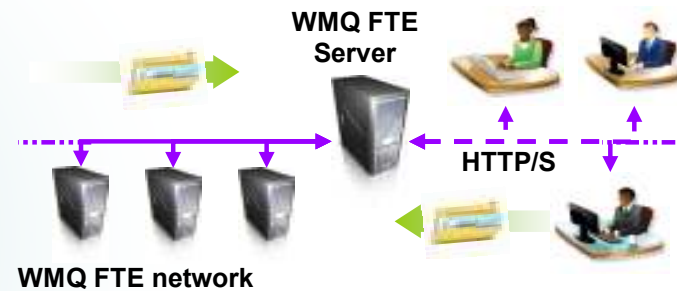
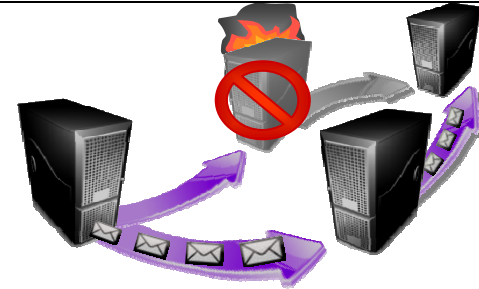
<input checked="" type="checkbox"/> <b>Auditable</b>	Records complete and detailed audit log of entire file journey “What went where, when and to whom”
<input checked="" type="checkbox"/> <b>Reliable</b>	File contents not corrupted or partially transmitted Files only appear at destination whole and intact
<input checked="" type="checkbox"/> <b>Secure</b>	Files content encrypted during transmission File access authenticated and controlled
<input checked="" type="checkbox"/> <b>Automated</b>	Eliminates need to manually detect problems and restart transfers Providing scheduling and triggering for event-driven transfers
<input checked="" type="checkbox"/> <b>Centralized</b>	Remote control and monitoring of file progress from anywhere
<input checked="" type="checkbox"/> <b>Flexible</b>	Able to deploy and re-configure file transfers instantaneously from anywhere Managing transfers end-to-end across a network – not just between 2 points
<input checked="" type="checkbox"/> <b>Any file size</b>	No upper limit on the size of file than can be moved
<input checked="" type="checkbox"/> <b>Integrated</b>	With SOA infrastructure: Messaging, ESBs, Governance, B2B and BPM
<input checked="" type="checkbox"/> <b>Cost Effective</b>	Provides a consolidated transport for moving both Files and Messages





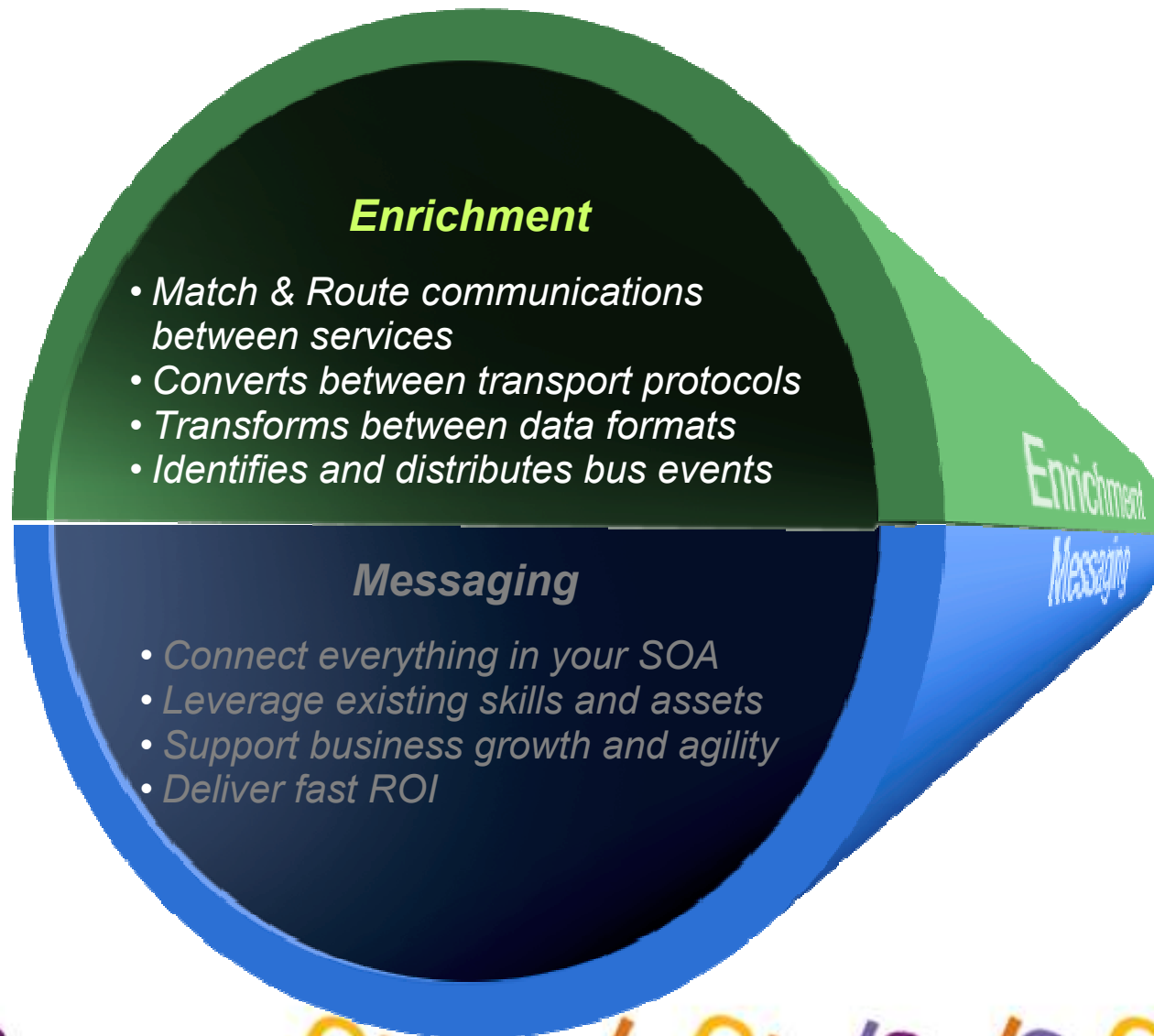
# What's New in Messaging?

- **WebSphere MQ**
  - Reduce business costs and disruption from unplanned outages with software-enabled high availability
- **WebSphere MQ File Transfer Edition**
  - ★ - Enable ad-hoc file transfers using standard Web browser
- **WebSphere MQ Low Latency Messaging**
  - Capable of over 91 million messages per second over Native InfiniBand
  - ★ - New support for re-playing missed messages
- **WebSphere DataPower Low Latency Appliance XM70**
  - ★ - Support for TIBCO Rendezvous/EMS Messaging





# A Closer Look at the ESB, Enrichment and Messaging



# ESBs Simplify Connectivity

Customers  
Web Shop  
Portal



Partners, Suppliers

Internet  
Standards

http

soap/http

JDBC

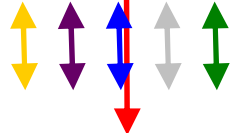


Backends



JMS

Files



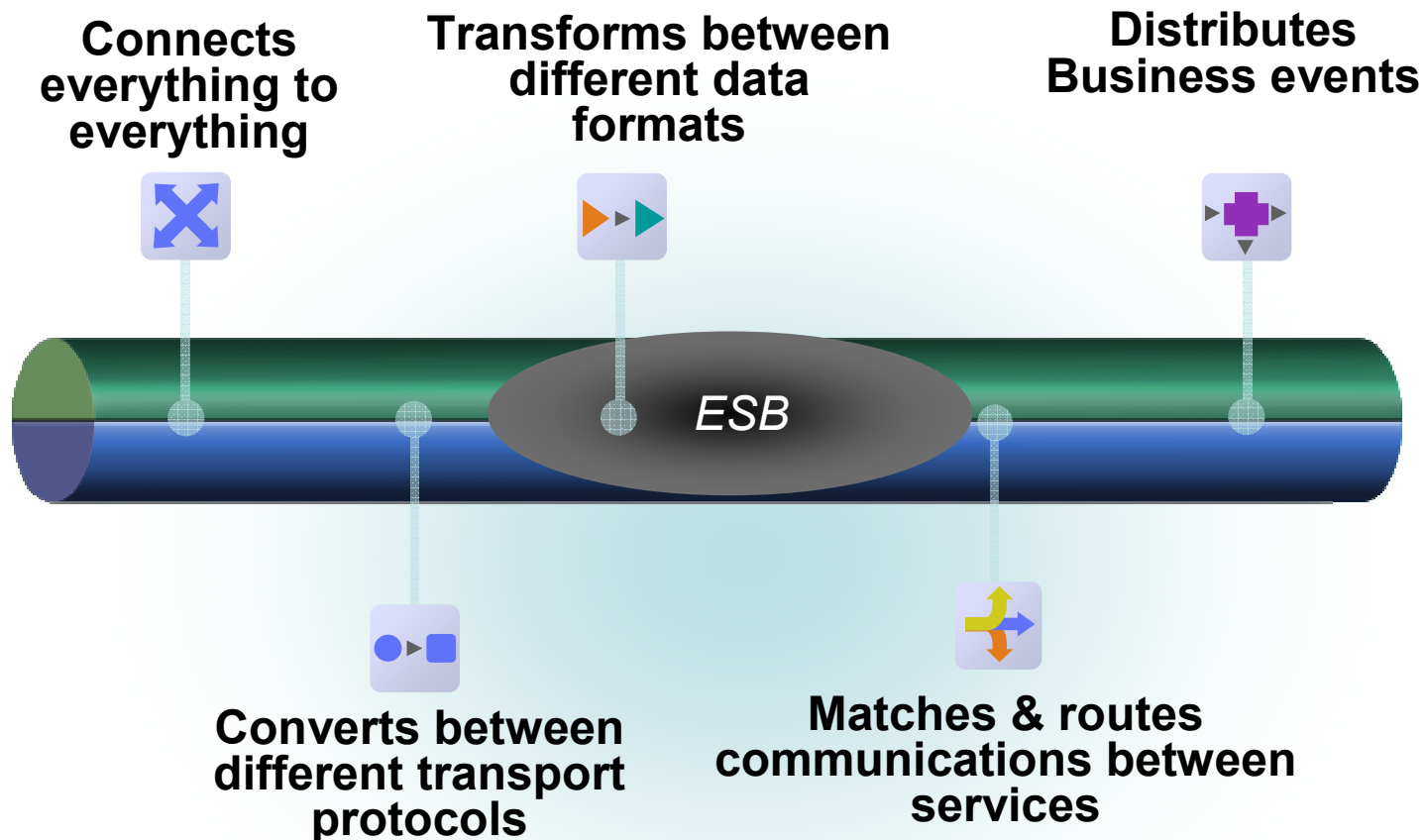
WebSphere MQ





# Agility and Savings Begin with Integration

## The Enterprise Service Bus (ESB)



### Optimizing Costs

- Integrate new customers and partners up to 80% faster
- Improve performance more than 10x, with lower costs
- Achieve full ROI within as few as 6 months



# ESB Offerings from IBM WebSphere

## *Solutions to Meet Any and Every Demand*



### **WebSphere ESB**

Optimized with WebSphere Application server for an integrated SOA platform: service providers, registry, common tooling, extensible to BPM



### **WebSphere DataPower XI50**



Purpose-built hardware for simplified, self-contained deployment with hardened security, low latency, rich application integration and data transformation



### **WebSphere Message Broker**

Platform-independent, universal connectivity and transformation in heterogeneous IT environments, with rich set of adapters and protocol bridges packaged with applications and legacy platforms



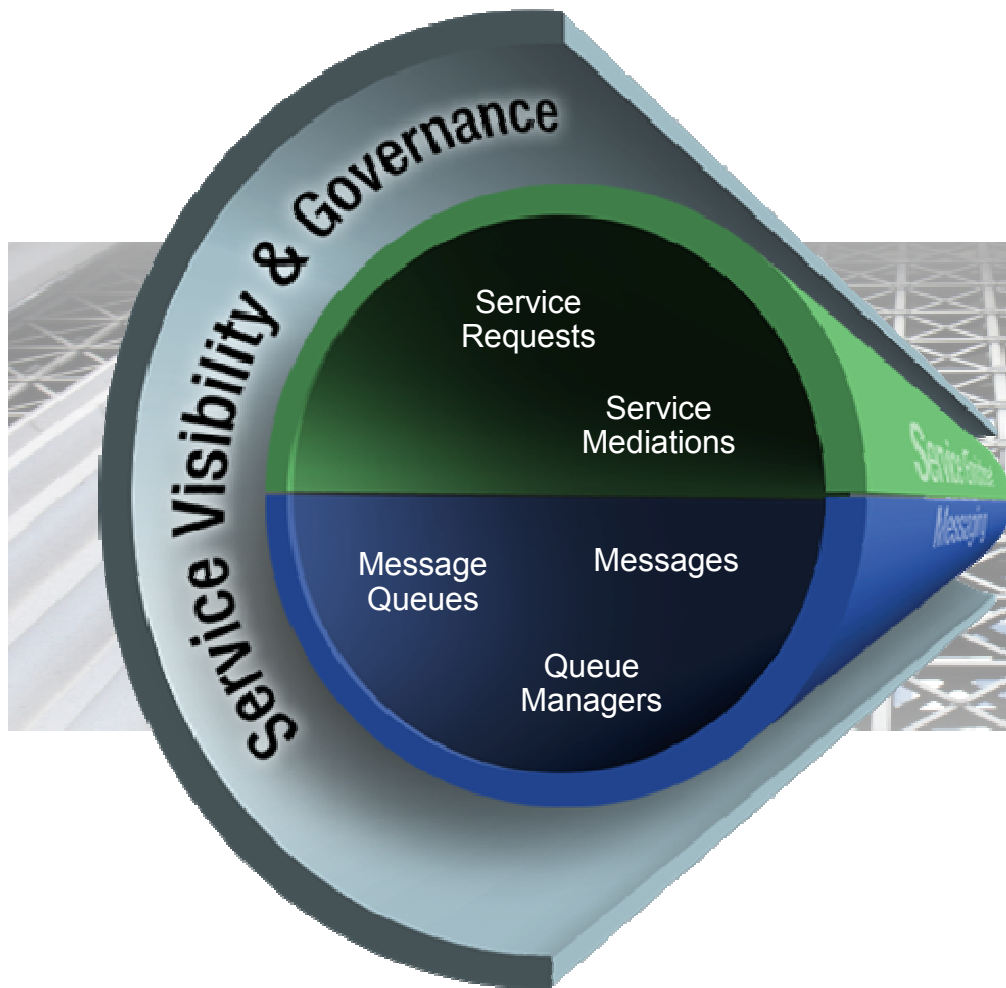
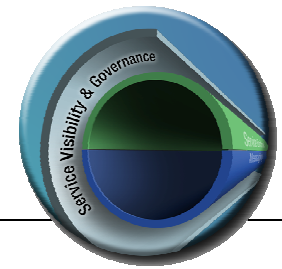
# What's New in ESBs?

- **WebSphere Enterprise Service Bus and WebSphere Message Broker**
  - **Patterns Based Development**
    - Powerful development capability with pattern-based development, guided task flows, mapping enhancements and simplification
  - **Service Federation Management**
    - Manage service visibility and reuse across the enterprise with WebSphere Service Registry & Repository
- **WebSphere DataPower Integration Appliance XI50**
  - **Application Optimization**
    - Simplify your IT infrastructure with new dynamic Application Optimization management
  - **BladeCenter**
    - New appliance offering which now allows customers to deploy DataPower appliance technology within new or existing IBM BladeCenter infrastructure



# Service Visibility & Governance

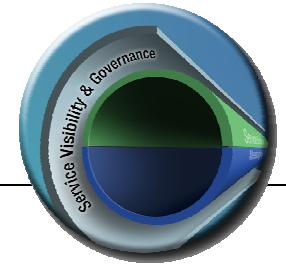
*Governs Messaging Applications and Services*



- **Manage** what you have, no matter where
- **Trust** existing services, accelerate reuse & cut costs
- **Secure** mission-critical services & documents



# Service Visibility & Governance



## WebSphere Service Registry & Repository

*Highly Prescriptive Service Lifecycle Governance*



- Apply prescriptive approach to service governance with **Pre-built Governance Models**
- Accelerate reuse with **Automated Service Discovery** across heterogeneous environment
- Govern the lifecycle of Services and **Policies**
- Interoperate** and federate with existing SOA infrastructure and service management solutions
- Enforce policies** consistently to help achieve reliability and compliance
- Manage service visibility and reuse across the enterprise with **Service Federation**

## WebSphere DataPower XML Security Gateway XS40

Centralize Web services and web application security and policy enforcement

- Purpose-built, hardened, high performance appliance for simplification of the DMZ



IBM Software  
**Impact2010**  
Comes to You





# Extend Connectivity to Customers & Partners

*Maximizes the value and effectiveness of your ESB*



- Industry transformation solutions with guaranteed quality of service
- The ability to easily manage and adopt to changing industry standards
- Real time access to disparate data and information
- A consolidated partner management platform

## *Optimizing Costs*

- Reduce interface maintenance cost by 75%
- Reduce cost of industry standards compliance by as much as 75%





## Extend Your SOA to Customers and Partners

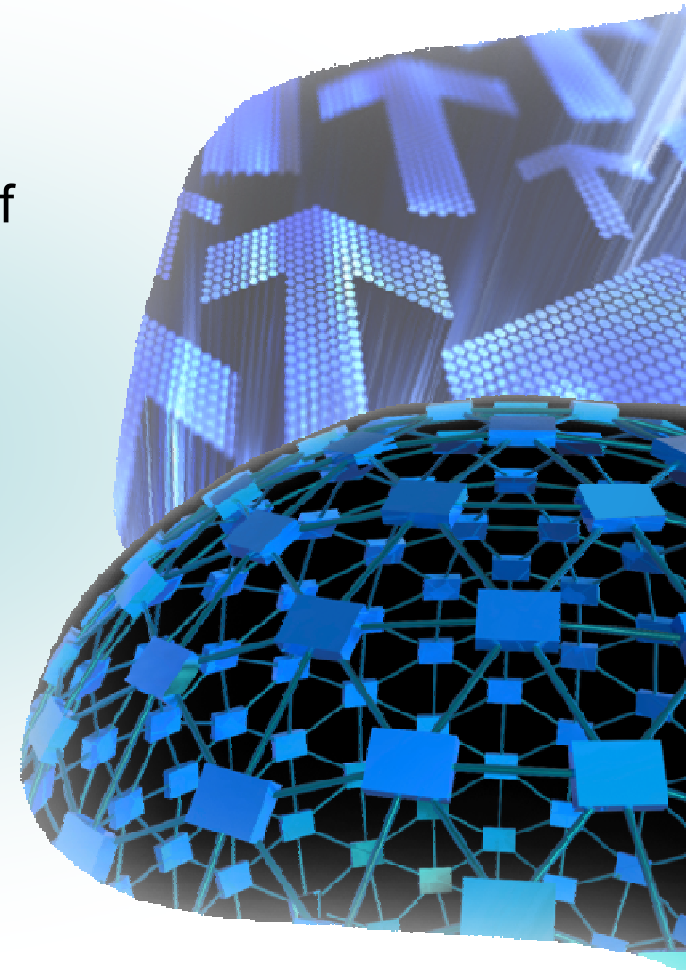
- **WebSphere Transformation Extender**
  - Providing universal access to industry-specific data
- **WebSphere DataPower B2B Appliance XB60**
  - Drop-in solution for simplified, secure & scalable partner connectivity
- **WebSphere Adapters**
  - Standard, reusable interface points to packaged and legacy applications
- **WebSphere Partner Gateway**
  - Consolidated B2B solution to meet broad, dynamic business requirements



# What's New in Extend Connectivity to Customers & Partners?



- **WebSphere Transformation Extender**
  - Expanded compatibility with the WebSphere portfolio providing users with a wider range of options to deploy with their SOA and BPM solutions
- **WebSphere DataPower B2B Appliance XB60**
  - EDIINT AS1 Support
  - ★ – Drummond Group Certification
- **WebSphere Adapters**
  - Expanded portfolio integration and improved consumability through enhanced tooling and user interfaces



# Delivering the Most Connected SOA

## Product Release Highlights



- **ESB Messaging & Enrichment**

- WebSphere MQ V7.0.1
- WebSphere MQ File Transfer Edition V7.0.2
- WebSphere MQ Low Latency Messaging V2.4
- WebSphere DataPower Low Latency Appliance XM70 3.8.1
- WebSphere Enterprise Service Bus V7
- WebSphere Message Broker V7
- WebSphere DataPower Integration Appliance XI50 V3.8.1



- **Service Visibility & Governance**

- WebSphere Service Registry and Repository V7
- WebSphere Service Registry and Repository Advanced Lifecycle Edition V7
- WebSphere DataPower Security Gateway XS40 V3.8.1



- **Extend Connectivity to Partners & Customers**

- WebSphere Transformation Extender V8.3
- WebSphere DataPower B2B Appliance XB60 V3.8.1
- WebSphere Adapters V7

**Impact2010**  
Comes to You



**IBM Better Enables Business Agility by adding industry leading Cloud integration capabilities**  
*Recently Announced IBM Acquisition of Cast Iron Systems*

***Enhancing clients' time to value*** ...integrate in days

***Simplifying the integration*** of Cloud applications and on-premise applications

***Ensuring client success*** by leveraging SaaS and Cloud at the lowest cost

**WebSphere®**



# Pressures on Government Systems Today

## Siloed, Complex and Unfocused

- Departments and other branches of local government are disconnected with manual processes
  - Public Services: fragmented, uncoordinated, poor sharing of resources and inconsistent data
- Government mandated change can be costly, and time consuming
  - New Services deployment delays
- Focus on service provision
  - Services and applications not designed for citizen needs – built for service provider
- Concerns over value for money and trust
  - Older decaying infrastructure impacting service quality, leading to damaging failures in security and behaviours



## Focus for Smarter Government

- Changing demographics
- Accelerating globalization
- Rising environmental concerns
- 
- Evolving societal relationships
- Growing threats to social stability and order
- Expanding impact of technology



## Addressing the need for change in Public Sector

- Help optimize costs by automating processes
  - **Tax and Revenue Collection** : Move to online payments
  - Capture insights for effective decisions
- **Disaster Recover/ Emergency Planning** : Ensure effective communication between local services
  - Adapt and respond dynamically to marketplace change
- **Innovation for new services** : Reuse existing functions to deliver new services faster
  - Help increase productivity using business modeling strategies
- **Environmental Concerns and Benefits** : Change processes where necessary following commercial best practices
  - Support customer service by placing customers at the center of your business
  - **Social Services and Education Provision** : Rework communication and interaction with customers and partner interactions driven by needs

