



IBM Global Data Synchronization for
WebSphere Product Center V 1.2

**WebSphere Business Integration Connect,
MQ configuration Guide**

Note: Before using this information and the product it supports, read the information in “Notices” on page 29.

29 July 2005

This edition of this document applies to IBM Global Data Synchronization for WebSphere Product Center v1.2, and to all subsequent releases and modifications until otherwise indicated in new editions.

© Copyright International Business Machines Corporations 2005. All rights reserved. Licensed Materials-Property of IBM

US Government Users Restricted Rights – Use, duplication or disclosure restricted by GSA ADP Schedule Contract with IBM Corp.



Table of Contents

TABLE OF CONTENTS	1
ABOUT THIS DOCUMENT	1
AUDIENCE	1
RELATED DOCUMENTATION	1
TYPOGRAPHIC CONVENTIONS	1
CH 1 SETUP DIAGRAM	3
HARDWARE/SOFTWARE REQUIREMENTS	4
CH 2 INSTALLATION STEPS	5
INSTALL ORACLE	5
INSTALL MQ SERVER	5
SETUP CLASSPATH	5
CREATION OF .BINDINGS FILE	6
CH 3 CONFIGURATION CHANGES IN GDS	9
CH 4 MQ CONFIGURATION	ERROR! BOOKMARK NOT DEFINED.
<i>Creation of Queue Manager:</i>	<i>Error! Bookmark not defined.</i>
<i>Creation of Server Connection Channel:</i>	<i>Error! Bookmark not defined.</i>
CH 5 WEBSPHERE BUSINESS INTEGRATION CONNECT 4.2.2.4 INSTALLATION	11
INSTALL DATABASELOADER	11
HUB INSTALLATION	12
CH 6 WEBSPHERE BUSINESS INTEGRATION CONNECT 4.2.2.4 CONFIGURATION	17
COMMUNITY PARTICIPANTS	17
TARGETS	18
GATEWAYS	19
INTERACTIONS	20
B2B CAPABILITIES	22
PARTICIPANT CONNECTIONS	23
SECURITY CONFIGURATION	24
<i>Create Certificate</i>	<i>24</i>
<i>Load Certificate</i>	<i>25</i>
NOTICES	26

About this document

Audience

This document is for consultants, developers, and system administrators, who plan, install, deploy, and administer WebSphere Business Integration Connect for IBM Global Data Synchronization for WebSphere Product Center.

Related documentation

The following related IBM Global Data Synchronization for WebSphere Product Center 1.2 documentation is also available:

- User Guide
- Installation and Configuration Guide
- Customization Guide

Typographic conventions

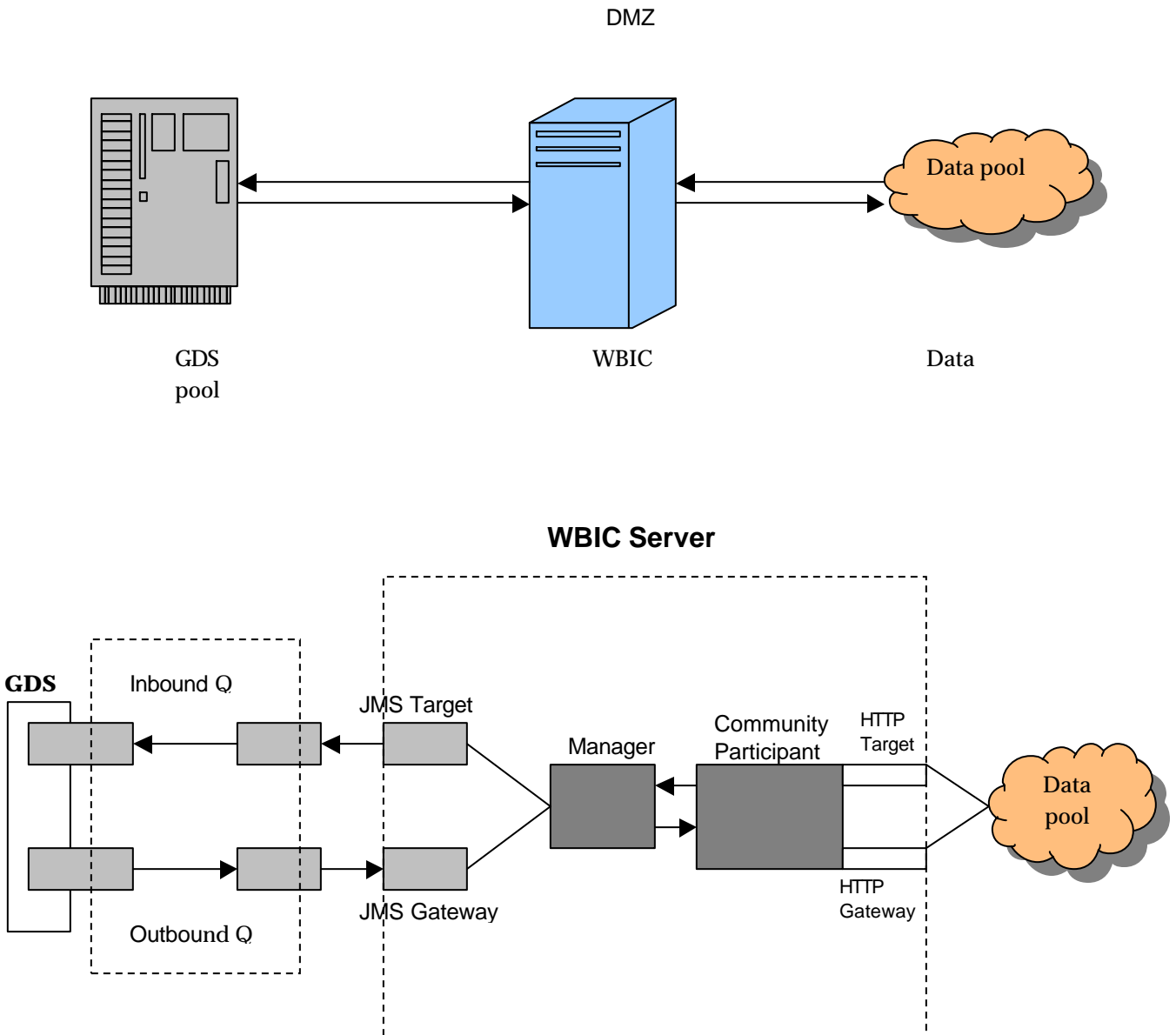
This document uses the following conventions:

- `Courier New font` - Indicates commands, directory names, user names, path names, and file names.
- **Note** - Indicates important or clarifying information including exceptions, interdependencies, and special situations.
- **Tip** - Indicates a helpful action that will simplify or streamline the current procedure.
- **bold font** - Indicates buttons, tabs, menus, and keyboard key names. For example, the **Save** button.
- *Italics font* - Indicates screen names. For example, the *Login* screen.

Terms and Acronyms

Term/Acronym	Description
GDS	For convenience, the product name IBM Global data synchronization for WebSphere Product Center is sometimes written in a shortened form as GDS. All instances of the acronym GDS in this document and related documentation stand for the product name IBM Global Data Synchronization for WebSphere Product center

Ch 1 Setup Diagram



Hardware/Software Requirements

Hardware Requirement

IBM Intellistation Zpro / 2GB RAM / 40 HB HDD / 2WAY

Software Requirement

The software Datapool connection is:

- WebSphere Business Integration Connect 4.2.2 Enterprise Fix Pack 4
- WebSphere MQ Version 5.3
- Oracle 9i
- Operating System - Windows 2000 Professional with Service Pack 4.

Ch 2 Installation steps

Install Oracle

Install the required version of Oracle. Refer to the following to find help on Oracle installation.

http://download-west.oracle.com/docs/html/A95494_01/toc.htm

While installing Oracle, in the **database identification stage**, type “wbic” in the fields **Global DB Name** and **SID**.

Install MQ Server

Complete the MQ server installation.

Setup ClassPath

The following steps describes as to how to set up a classpath.

Go to <MQ Installed DIR>Java\lib and check for jar files.

- com.ibm.mq.jar
- com.ibm.mqbind.jar
- com.ibm.mqjms.jar
- connector.jar
- fscontext.jar
- jms.jar
- jndi.jar
- jta.jar
- ldap.jar
- postcard.jar
- providerutil.jar

Add the following jar files to the system CLASSPATH.

1. <MQ Installed DIR>\Java\lib\providerutil.jar;
2. <MQ Installed DIR>\Java\lib\com.ibm.mqjms.jar;
3. <MQ Installed DIR>\Java\lib\ldap.jar;
4. <MQ Installed DIR>\Java\lib\jta.jar;

5. <MQ Installed DIR>\Java\lib\jndi.jar;
6. <MQ Installed DIR>\Java\lib\jms.jar;
7. <MQ Installed DIR>\Java\lib\connector.jar;
8. <MQ Installed DIR>\Java\lib\fscontext.jar;
9. <MQ Installed DIR>\Java\lib\com.ibm.mq.jar;

Creation of .bindings file

To create a .bindings file, follow the following steps:

1. On the server machine, create a directory and label it
C:\JNDI-Directory

Note: If this directory already exists, delete any earlier versions of the .bindings files from it.

2. On the server machine, navigate to <MQ Installed DIR>\Java\bin and add the following changes in the JMSAdmin.config file.

Change the following configuration in **JMSAdmin.config** file

- a. INITIAL_CONTEXT_FACTORY
- b. PROVIDER_URL

Example

INITIAL_CONTEXT_FACTORY=com.sun.jndi.fscontext RefFSContextFactory

PROVIDER_URL=file:/C:/JNDI-Directory

On server machine, navigate to following directory <MQ Installed

DIR>\Java\bin to

Execute the file JMSAdmin.bat .

```

C:\Program Files\IBM\WebSphere MQ\MSI\Program Files\IBM\WebSphere MQ\Java\bin>JMSAdmin.bat_

Command Prompt - JMSAdmin.bat
5648-C60, 5724-B41, 5655-F10 (c) Copyright IBM Corp. 2002. All Rights Reserved.
Starting Websphere MQ classes for Java(tm) Message Service Administration
InitCt> _

```

If an exception occurs then check if the classpath is set for the jar files that are mentioned in “Setup Classpath”

Execute the following two commands :

- `def q(< mention queue name>)`

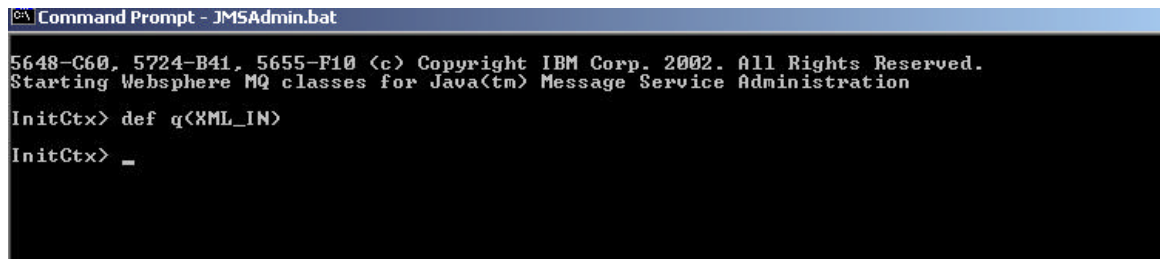
Example:

```
def q(XML_IN)
def q(XML_OUT)
```

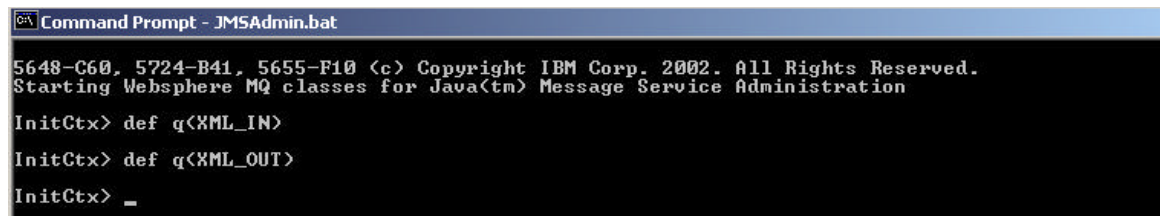
- `def qcf(< mention queue factory name >)`
 `transport(CLIENT)`
 `channel(< mention Server Connection Channel name >)`
 `host(< mention server ip address >)`
 `port(< mention port number>)`
 `qmgr(< mention queue manager name >)`

Example:

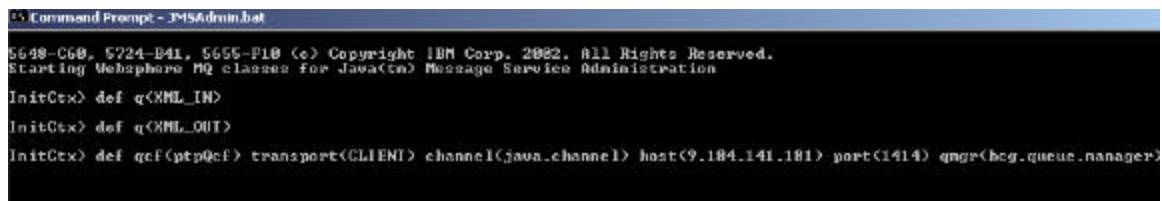
```
def qcf(ptpQcf) [Note: Queue factory name mentioned in gds.properties]
transport(CLIENT)
channel(java.channel)
host(9.184.141.181)
port(1414)
qmgr(bcg.queue.manager)
```



```
Command Prompt - JMSAdmin.bat
5648-C60, 5724-B41, 5655-F10 (c) Copyright IBM Corp. 2002. All Rights Reserved.
Starting Websphere MQ classes for Java(tm) Message Service Administration
InitCtx> def q(XML_IN)
InitCtx> _
```



```
Command Prompt - JMSAdmin.bat
5648-C60, 5724-B41, 5655-F10 (c) Copyright IBM Corp. 2002. All Rights Reserved.
Starting Websphere MQ classes for Java(tm) Message Service Administration
InitCtx> def q(XML_IN)
InitCtx> def q(XML_OUT)
InitCtx> _
```



```
Command Prompt - JMSAdmin.bat
5648-C60, 5724-B41, 5655-F10 (c) Copyright IBM Corp. 2002. All Rights Reserved.
Starting Websphere MQ classes for Java(tm) Message Service Administration
InitCtx> def q(XML_IN)
InitCtx> def q(XML_OUT)
InitCtx> def qcf(ptpQcf) transport(CLIENT) channel(java.channel) host(9.184.141.181) port(1414) qmgr(bcg.queue.manager)
InitCtx> _
```

Note: If you get a message saying unable to bind object message, check whether /JNDI-Directory exist or not.

If there is already an earlier version of .bindings file existing in the folder, delete it and then execute the above command.

3. After running these commands this creates a .bindings file in the C:\JNDI-Directory. Copy that binding file from C:/JNDI-Directory folder and paste to the required destination <GDS Installed DIR>/etc/default.
Example: For GDS, paste this binding file to \$TOP/etc/default directory if it Linux client

Ch 3 IBM Global Data Synchronization for WebSphere Product Center Configuration

In IBM global Data synchronization for WebSphere eProduct Center there are Configuration changes in gds.properties file:

Open \$TOP/etc/default/gds.properties file and set the value of the variable **SEND_TO JMS to TRUE.**

Go to \$TOP/etc/messaging/xml/Choose demand/supply, then go to the uccnet/transora/wwrev6 folder with respect to your requirement and set the values for the parameters **<inBoundQueueName>**, **<outBoundQueueName>** and **<queueConnectionFactory>** in the file **properties.xml.**

For Example:

For Inbound message:

```
<inBound>
  <transport>
    <jms>
      <inBoundQueueName>XML_OUT</inBoundQueueName>
      <initialContextFactory>com.sun.jndi.fscontext.RefFSContextFactory</initialContextFactory>
      <queueConnectionFactory>ptpQcf</queueConnectionFactory>
    </jms>
  </transport>>
  ...
  ...
</inBound>
```

Similarly for Outbound message:

```
<outBound>
<transport>
  <jms>
```

```
        <outBoundQueueName>XML_IN[ I 3 ]</outBoundQueueName >
<initialContextFactory>com.sun.jndi.fscontext.RefFSContextFactory</i
nitialContextFactory>
    <queueConnectionFactory>ptpQcf[ I 4 ]</queueConnectionFactory>
    </jms>
</transport>
<outBound>
```

In the above example:

XML_OUT: this will be the queue name for inbound message

XML_IN: this will be the queue name for outbound message.

ptpQcf: this will be the queue factory name.

To Start/Stop JMSReceiver :

To start JMSReceiver, go to \$TOP/bin directory and execute :

gdsmsg.sh start

To abort the JMSReceiver, go to \$TOP/bin directory and execute

gdsmsg.sh abort

To check the status of the JMSReceiver, go to \$TOP/bin directory and execute

gdsmsg.sh status

Ch 4 WebSphere Business Integration Connect

4.2.2.4 Installation

The following steps explain how to install and configure WebSphere Business Integration Connect.

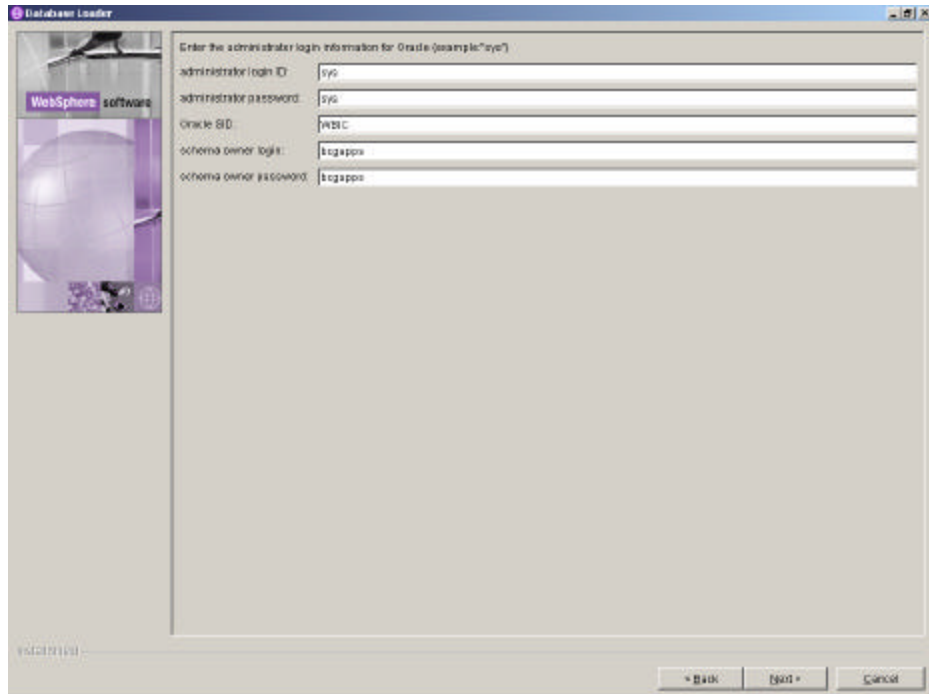
1. In Windows, create four users having the same username and passwords viz.,
 - bcgcon (for console),
 - bcgrece (for receiver),
 - bcgdoc (for document manager)
 - bcguser
2. Create a group called bcgroup with the above users as part of the group.

Install DataBaseLoader

Run setup file and start the installation of the database loader.

In the **administrator password** field Enter the password as **sys** if the database is Oracle (For Oracle)

In the **Oracle SID** field, enter the Oracle SID as WBIC as shown in the following screen.



Hub Installation

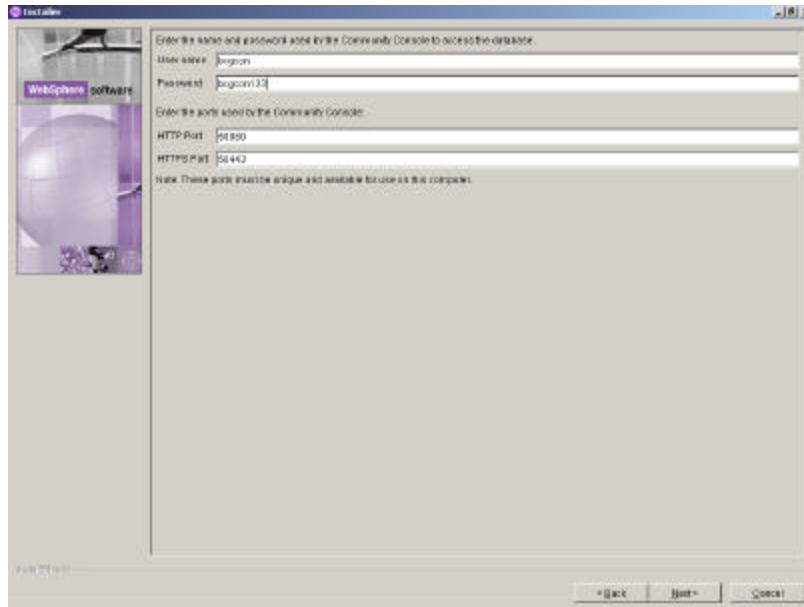
Run the setup file for hub installation.

In the **password** field, Enter the password for the user **bcguser** for example bcguser123.

Select **Install as Windows Service** and Click **Next**. The window to select the database server for Business Integration Connect is displayed.

In the **Owner Name** field, enter database user name as bcgapps

In the **Owner Password** field, enter the password.

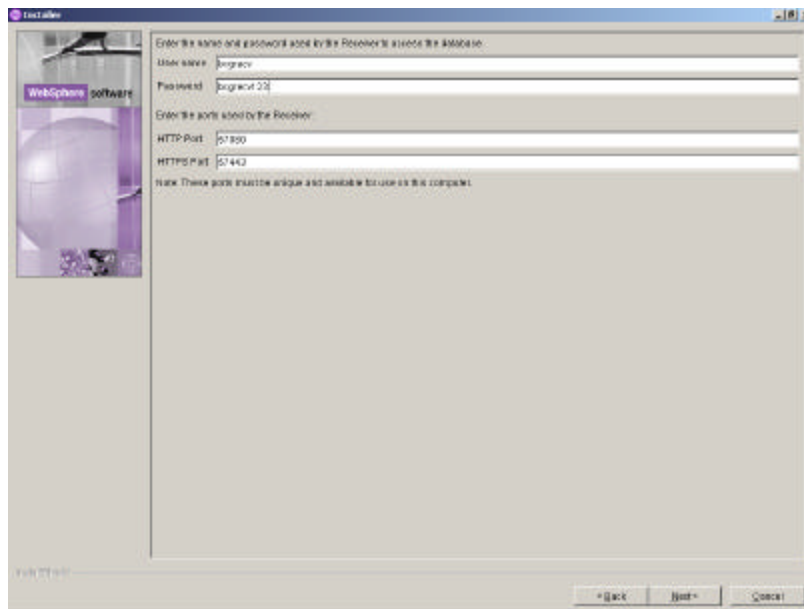


In the screen to enter user name and password used by the community console:

In the **User name** field, enter the user name as bcgcon.

In the **Password** field, enter the password.

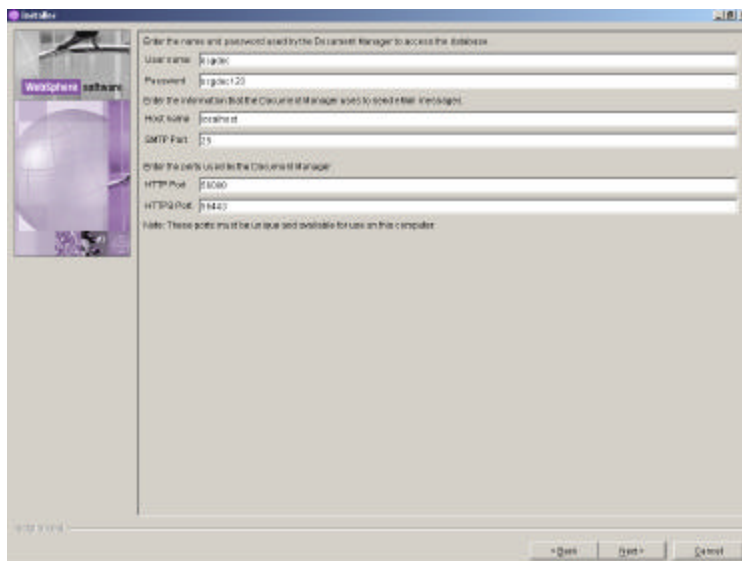
Ensure relevant information in the rest of the fields and click **Next**. The screen to enter the user name and password used by the receiver to access the database is displayed.



In the **User name** field enter the user name as bcgrece.

In the **password** field, enter the password.

Ensure relevant information in the other fields and click **Next**. The screen to enter the user name and password used by the Document Manager to access the database is displayed.



The screenshot shows a window titled "Install" with a "WebSphere Business Integration Connect" logo on the left. The main area contains the following fields and text:

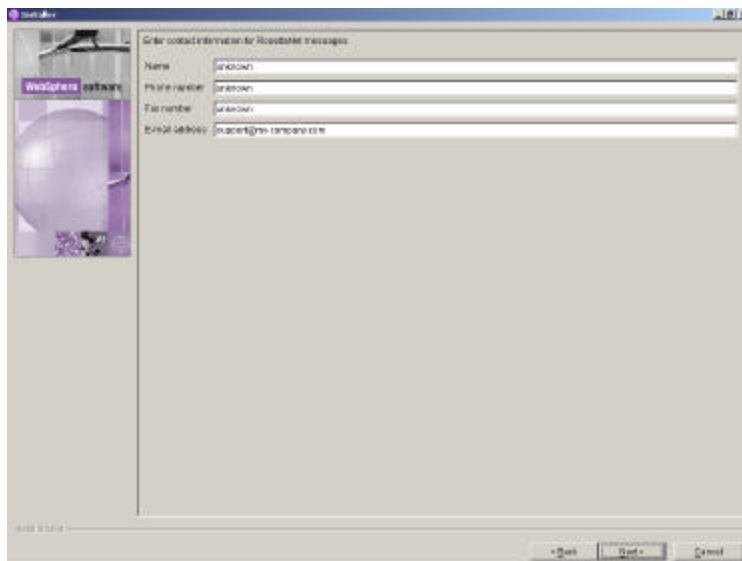
- Enter the name and password used by the Document Manager to access the database
- User name: bcgdoc
- Password: b1gdoc123
- Enter the information for the Document Manager used by IBM Mail messages:
 - Host name: localhost
 - SMTP Port: 25
- Enter the ports used by the Document Manager:
 - HTTP Port: 8080
 - HTTP2 Port: 8443
- Note: These ports must be unreserved available for use on this computer

At the bottom right, there are buttons for "Back", "Next", and "Cancel".

In the **User Name** field enter the user name as bcgdoc.

In the **password** field, enter the respective password.

Ensure relevant values in the rest of the fields and click **Next**. The screen to enter the contact information is displayed.

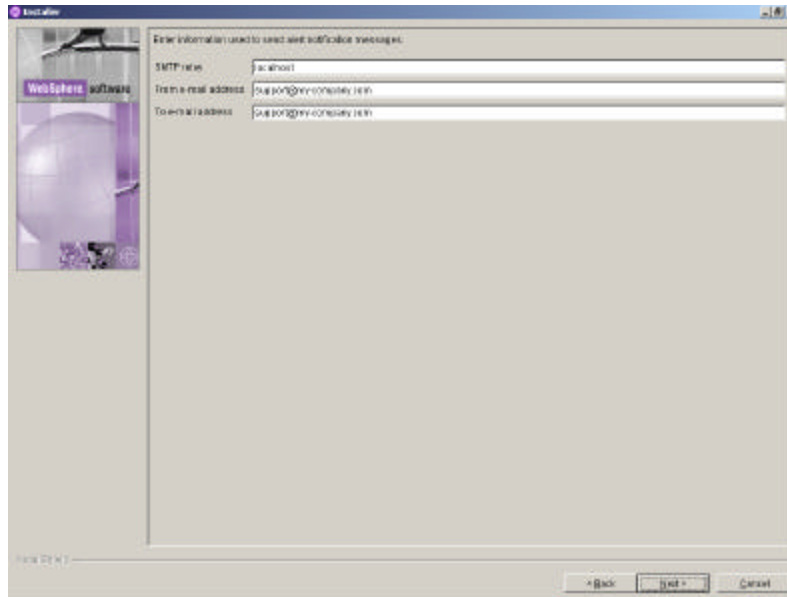


The screenshot shows a window titled "Install" with a "WebSphere Business Integration Connect" logo on the left. The main area contains the following fields and text:

- Enter contact information for IBM Mail messages
- Name: bcgdoc
- Phone number: bcgdoc
- Fax number: bcgdoc
- Email address: bcgdoc@bmg.com

At the bottom right, there are buttons for "Back", "Next", and "Cancel".

Ensure relevant information is entered and click **Next**. The screen to enter the contact information used to send notifications is displayed.



Enter that relevant information is provided and click **Next**. The screen providing the summary of the installation is displayed. Click **Next**. The installation process is initiated. Once the installation is complete, a successful installation notification is displayed.

This completes all the processes required for the installation of IBM WebSphere Business Integration Connect – Enterprise edition for the IBM Global Data Synchronization for WebSphere Product Center.

Ch 5 WebSphere Business Integration Connect

4.2.2.4 Configuration

The following configuration needs to be done for WBIC box.

- [Community Participants](#)
- [Targets](#)
- [Gateways](#)
- [Interactions](#)
- [B2B Capabilities](#)
- [Participant Connections](#)
- [Security Configuration](#)

Community Participants

To define Partner One (IBMGDS)

1. Go to Community Console and select **Account Admin**. By default, the Community Participant view is displayed.
2. Click Create and define the following properties:
 - Participant Login Name: IBMGDS
 - Participant Name: Partner One
 - Participant Type: Community Manager
3. Click **New** under Business ID.
4. Select **Type** as DUNS+4 and add an Identifier value as the Global Location Number(GLN).
5. Click **Save**.

To define Partner Two (Datapool)

1. Got to Community Console and select **Account Admin** . The **Community Participant** display is the default view.
2. Click **Create** and define the following properties:
 - Participant Login Name: <datapool name>
 - Participant Name: Partner Two
 - Participant Type: Community Participant

3. Click **New** under Business ID.
4. Select **Type** as **DUNS+4** and add an **Identifier** value of Datapool specific Global Location Number(GLN).
5. Click **Save**.

Targets

To create a target for the receipt of HTTP:

1. Select **Hub Admin** from the main menu and then **Targets** from the horizontal navigation bar.
2. Click **Create**.
3. Define the following properties for the new target:
 - Target Name: HttpTarget
 - Transport: HTTP/S
 - Gateway Type: Production
 - URI: /bcgreceiver/submit (specific to WBIC receiver)
4. Click **Save**.

To create a target for the receipt of files on the local file system:

1. Select **Hub Admin** from the main menu and then **Targets** from the horizontal navigation bar.
2. Click **Create**.
3. Define the following properties:
 - Target Name: FileTarget
 - Transport: File Directory
 - Default Gateway Type: Production
 - Document Root Path: \temp\FileTarget

Note: This will create a FileTarget directory within the C:\temp directory. Be sure a C:\temp directory exists on your local file system in case you are using this Document Root Path.

Gateways

To create a gateway for Partner One:

1. Select **Account Admin** from the main menu and **Community Participant** from the horizontal navigation bar.
2. Click **Search**.
3. Select **Partner One (IBMGDS)** by clicking the icon.
4. Click **Gateways** from the horizontal navigation bar.
5. Select **Create** and provide the following details:
 - Gateway Name: IBMGDSGateway
 - Transport: File Directory
 - Target URI: file://C:\FileGateway
6. Click **Save**.

Next, set this newly created gateway as the default gateway for Partner One. To do this, follow the steps mentioned below:

1. Click **List** to view all gateways configured for Partner One.
2. Click **View Default Gateways**.
3. From the Production Gateway Type drop down menu, select **IBMGDSGateway**.
4. Click **Save**.

Create a gateway for Partner Two

1. Select **Account Admin** from the main menu and **Community Participant** from the horizontal navigation bar.
2. Click **Search**, and select **Partner Two(Datapool)** by clicking the icon.
3. Select **Gateways** from the horizontal navigation bar.
4. Click **Create** and enter the following details:
 - Gateway Name: <Datapool Gateway Name> (Example: TransoraGateway)
 - Transport: HTTP/1.1

- Target URI: http://IP_MACHINE_B:80/input/AS2 (IP pointing to datapool)
 - User Name: IBMGDS
 - Password: IBMGDS
5. Click **Save**.

The next step is to define a default gateway for this participant. To define a default gateway:

1. Click List followed by View Default Gateways.
2. From the **Production Gateway Type** drop down menu, select <Datapool Gateway Name> (for example: **Transora Gateway**.)
3. Click **Save**.

Interactions

Create two new interactions.

1. Select **Hub Admin** from the main menu and **Document Flow Definition** from the horizontal navigation bar.
2. Select **Manage Interactions** and then **Create Interaction**.
3. From the Source column select **Package: None, Protocol: XML, Document Flow: All**.
4. From the Target column select **Package: AS, Protocol: XML, Document Flow: All**.
5. Set **Action** to Pass Through and click **Save**.

The following steps explain creating a custom XML interaction “Protocol:XML” :

Creating a CustomXML protocol definition format

The following steps describe how to create a custom XML protocol definition format

1. Click **Hub Admin > Document Flow Definitions > Create Document Flow Definition**.
2. For **Document flow type**, select **Protocol**.
3. For **Code**, enter the value for the type of object you selected in the previous step. For example, you might want to enter XML.
4. For **Name**, enter an identifier for the document flow definition. For example, for a custom XML protocol, you could enter Custom_XML. This field is required.
5. For **Version**, enter **1.0**.

6. Enter an optional description of the protocol.
7. Set **Document Level** to **No**, because you are defining a protocol, rather than a document flow (which you will define in the next section).
8. Set **Status** to **Enabled**.
9. Set **Visibility** for this protocol. You will probably want it to be visible to all participants.
10. Select the packages in which this new protocol will be wrapped. For example, if you want this protocol to be associated with all three packages, select **Package: AS**, **Package: None**, and **Package: Backend Integration**.
11. Click **Save**.

Next, use the Create Document Flow Definition page again to create a document flow.

Creating a document definition flow

1. Click **Hub Admin > Document Flow Definitions > Create Document Flow Definition**.
2. For **Document flow type**, select **Document Flow**.
3. For **Code**, enter the value for the type of object (document flow) you selected in the previous step.
4. For **Name**, enter an identifier for the document flow definition. For example, you could enter XML_Tester as a name for the document flow. This field is required.
5. For **Version**, enter **1.0**.
6. Enter an optional description of the protocol.
7. Set **Document Level** to **Yes** (because you are defining a document level).
8. Set **Status** to **Enabled**.
9. Set **Visibility** for this flow. You will probably want it to be visible to all participants.
10. Click the folder icon to expand each package you selected in the previous procedure. Expand the folder and select the name of the protocol you created in the previous section (for example, Protocol: CustomXML.).
11. Click **Save**.

The following is an example of what the AS Package portion of the Manage Document Flow Definitions page would look like if you created a protocol of CustomXML, associated the protocol with AS, None, and Backend Integration packaging, and created a document flow of XML_Tester:

Creating an XML format

After you create a custom XML protocol (and associate it with a package or set of packages) and create an associated document flow, you are ready to create the XML format. To create an XML format, use the following procedure.

1. Click **Hub Admin > Hub Configuration > XML Formats**.
2. Click **Create XML Format**.

3. For **Routing Format**, select the document flow definition with which this format will be associated.
4. For **File Type**, select **XML**. **Note:** XML is the only option available for file type.
5. For **Identifier Type**, select the element used to identify the incoming document type. The choices are **DTD**, **Name Space**, or **Root Tag**.
6. For each field for which a choice of types is offered, select either **Element Path**, which is the path to the value in the document, or **Constant**, which is the actual value in the document. Then provide a value.
 - a. For Source/Target Business ID, enter the xml path of the business ID. This field is required.
7. Click **Save**.

Create a second interaction.

1. Click **Create Interaction**.
2. From the **Source** column select Package: AS, Protocol: XML, Document Flow: All.
3. From the **Target** column select Package: None, Protocol: XML, Document Flow: All.
4. Set **Action to Pass Through** and click **Save**.



Status	Actions	Document Flow Definitions
Enabled	[Search] [Edit] [Delete]	Package: AS
Enabled	[Search] [Edit] [Delete]	Protocol: Binary (1.0)
Enabled	[Search] [Edit] [Delete]	Protocol: EDI-X12 (ALL)
Enabled	[Search] [Edit] [Delete]	Protocol: EDI-EDIFACT (ALL)
Enabled	[Search] [Edit] [Delete]	Protocol: EDI-Censent (ALL)
Enabled	[Search] [Edit] [Delete]	Protocol: XML (1.0)
Enabled	[Search] [Edit] [Delete]	Document Flow: XML (1.0)
Enabled	[Search] [Edit] [Delete]	Package: Backend Integration (1.0)
Enabled	[Search] [Edit] [Delete]	Package: None
Enabled	[Search] [Edit] [Delete]	Protocol: Binary (1.0)
Enabled	[Search] [Edit] [Delete]	Protocol: EDI-X12 (ALL)
Enabled	[Search] [Edit] [Delete]	Protocol: EDI-EDIFACT (ALL)
Enabled	[Search] [Edit] [Delete]	Protocol: EDI-Censent (ALL)
Enabled	[Search] [Edit] [Delete]	Protocol: cXML (1.2.009)
Enabled	[Search] [Edit] [Delete]	Protocol: Web Service (1.0)
Enabled	[Search] [Edit] [Delete]	Protocol: XML (1.0)
Enabled	[Search] [Edit] [Delete]	Document Flow: XML (1.0)

Interactions

B2B Capabilities

Follow the steps mentioned below to define B2B Capabilities for both Partner One (IBMGDS) and Partner Two (Transora).

Set the B2B Capabilities for Partner One (IBMGDS).

1. From the **Account Admin** main menu, select **Community Participant** from the horizontal navigation bar and click **Search**.
2. Select **IBMGDS** by clicking the icon.
3. Select **B2B Capabilities** from the horizontal navigation bar.
4. Select **Set Source** and **Set Target** for the following: Package: AS Protocol: XML Document Flow: ALL
5. In addition select **Set Source** and **Set Target** for: Package: None Protocol: XML Document Flow: ALL

Set the B2B Capabilities for Partner Two (Transora).

1. Select **Account Admin** from the main menu and **Community Participant** from the horizontal navigation bar.
2. Click **Search**.
3. Select Partner Two by clicking the icon.
4. Click on **B2B Capabilities** from the horizontal navigation bar.
5. Select the same set of B2B Capabilities for IBMGDS also.

Participant Connections

Define the participant connection between Partner One (IBMGDS) and Partner Two (Transora):

1. Select **Account Admin** from the main menu and **Participant Connections** from the horizontal navigation bar.
2. From the **Source** drop down, select **IBMGDS**.
3. From the **Target** drop down, select **Transora**.
4. Click **Search**.
5. Click **Activate** for the connection with the following detail:
 - Source:**
 - Package: None (N\A)
 - Protocol: XML (ALL)
 - Document Flow: ALL (ALL)
 - Target:**
 - Package: AS (N\A)
 - Protocol: XML (ALL)
 - Document Flow: ALL (ALL)

Next, you define the participant connection between IBMGDS and Transora. This is an almost identical process to above apart from the configuration of AS2 attributes.

To define the participant connection between Partner Two and Partner One:

1. Select **Account Admin** from the main menu and **Participant Connections** from the horizontal navigation bar.
2. From the **Source** drop down, select **Partner two (Transora)**
3. From the **Target** drop down, select **IBMGDS**.
4. Click **Search**.
5. Click **Activate** for the connection with the following details:
 - Source:**
 - Package: AS (N\A)
 - Protocol: XML (ALL)
 - Document Flow: ALL (ALL)
 - Target:**
 - Package: None (N\A)
 - Protocol: XML (ALL)
 - Document Flow: ALL (ALL)
6. Click on the **Attributes** button next to Package: AS (N\A) box for Transora.
7. Edit the Package: AS (N\A) attributes by scrolling down the screen and clicking the icon beside Package: AS (N/A).
8. Enter a valid email-id in the **AS MDN E-Mail Address (AS1)** field. This can be any valid e-mail address and will not be used in other test scenarios.
9. Enter a value AS MDN HTTP URL (AS2) field This should be entered as follows: **http://IP_MACHINE_A:57080/bcgreceiver/submit (IP pointing to datapool)**
10. Click **Save**.

Security configuration

This section covers three areas of security in WebSphere Business Integration Connect:

- [Create Certificate](#)
- [Load Certificate](#)

Create Certificate

WebSphere Business Integration Connect provides a graphical tool, the IBM Key Management Tool (**keyman**) for managing keys and certificates.

To create a certificate:

1. Run the ikeyman application by opening the ikeyman.bat file from
<installed path>\IBM\WBICconnect\receiver\bin
2. Open the receiver's default keystore, receiver.jks.

3. From the menu bar select **Key Database File Open**. On a default installation receiver.jks resides in: <installed path>\IBM\WBICconnect\common\security\keystore directory.
4. When prompted, enter the default password for receiver.jks. This password is WebAS.
5. Create a new self-signed certificate. Creating a self-signed personal certificate creates a public key within the server key store file.
To create a new self-signed certificate:
 - a. Click the **New Self-Signed...** button.
 - b. Give the certificate a **Key Label** that is used to uniquely identify the certificate within the key store. Use the label selfSignedCert.
 - c. Enter the server's **Common Name**. This is the primary, universal identity for the certificate. It should uniquely identify the principal that it represents.
 - d. Enter the name of your **Organization**.
 - e. Accept all other defaults and click **OK**.

Load Certificate

Load certificate from Partner Two (ie datapool, eg : **partnerTwoSSL.der or .cer**) into the Hub Operator's profile as a Root Certificate. A Root Certificate is a certificate issued from a Certifying Authority (CA) used when establishing a certificate chain. As Express is effectively the CA in this scenario, the downloaded certificate is loaded as a root certificate to allow Enterprise to recognize and trust the sender.

To load the public certificate into Enterprise Edition:

1. From the main menu select **Account Admin** followed by **Community Participant**. Click **Search**.
2. Select **Partner Two** by clicking the icon.
3. Select **Certificates** from the horizontal navigation bar.
4. Select **Load Certificate**.
5. Select the check box beside **Encryption**.
6. Change the **Description** to read Partner Two Decrypt.
7. Set the status as **Enabled**. Click **Browse**.
8. Navigate to the directory in which the decryption certificate, partnerTwoDecrypt.der is stored. Select the certificate and click **Open**.

9. Leave the Gateway Type as Production, click **Upload**, and click **Save**.

Notices

IBM Global Data Synchronization for WebSphere Product Center includes the following software that was licensed by IBM from the Apache Software Foundation under the terms and conditions of the Apache 2.0 license:

- Apache Struts v1.1
- Apache Commons-beanutils v1.6
- Apache Commons-digester v1.4
- Apache Xerces-j v2.4.0
- Apache XMLBeans v1.0.3
- Apache Commons-JXPath v1.2
- XML4J 4.3.3

This software is licensed to you under the terms and conditions of the International Program License Agreement, subject to its Excluded Components provisions. IBM is required to provide the following notice to you in connection with this software:

Apache License
Version 2.0, January 2004
<http://www.apache.org/licenses/>

TERMS AND CONDITIONS FOR USE, REPRODUCTION, AND DISTRIBUTION

1. Definitions.

"License" shall mean the terms and conditions for use, reproduction, and distribution as defined by Sections 1 through 9 of this document.

"Licensor" shall mean the copyright owner or entity authorized by the copyright owner that is granting the License.

"Legal Entity" shall mean the union of the acting entity and all other entities that control, are controlled by, or are under common control with that entity. For the purposes of this definition, "control" means (i) the power, direct or indirect, to cause the direction or management of such entity, whether by contract or otherwise, or (ii) ownership of fifty percent (50%) or more of the outstanding shares, or (iii) beneficial ownership of such entity.

"You" (or "Your") shall mean an individual or Legal Entity exercising permissions granted by this License.

"Source" form shall mean the preferred form for making modifications, including but not limited to software source code, documentation source, and configuration files.

"Object" form shall mean any form resulting from mechanical transformation or translation of a Source form, including but not limited to compiled object code, generated documentation, and conversions to other media types.

"Work" shall mean the work of authorship, whether in Source or Object form, made available under the License, as indicated by a copyright notice that is included in or attached to the work (an example is provided in the Appendix below).

"Derivative Works" shall mean any work, whether in Source or Object form, that is based on (or derived from) the Work and for which the editorial revisions, annotations, elaborations, or other modifications represent, as a whole, an original work of authorship. For the purposes of this License, Derivative Works shall not include works that remain separable from, or merely link (or bind by name) to the interfaces of, the Work and Derivative Works thereof.

"Contribution" shall mean any work of authorship, including the original version of the Work and any modifications or additions to that Work or Derivative Works thereof, that is intentionally submitted to Licensor for inclusion in the Work by the copyright owner or by an individual or Legal Entity authorized to submit on behalf of the copyright owner. For the purposes of this definition, "submitted" means any form of electronic, verbal, or written communication sent to the Licensor or its representatives, including but not limited to communication on electronic mailing lists, source code control systems,

and issue tracking systems that are managed by, or on behalf of, the Licensor for the purpose of discussing and improving the Work, but excluding communication that is conspicuously marked or otherwise designated in writing by the copyright owner as "Not a Contribution."

"Contributor" shall mean Licensor and any individual or Legal Entity on behalf of whom a Contribution has been received by Licensor and subsequently incorporated within the Work.

2. Grant of Copyright License. Subject to the terms and conditions of this License, each Contributor hereby grants to You a perpetual, worldwide, non-exclusive, no-charge, royalty-free, irrevocable copyright license to reproduce, prepare Derivative Works of, publicly display, publicly perform, sublicense, and distribute the Work and such Derivative Works in Source or Object form.
3. Grant of Patent License. Subject to the terms and conditions of this License, each Contributor hereby grants to You a perpetual, worldwide, non-exclusive, no-charge, royalty-free, irrevocable (except as stated in this section) patent license to make, have made, use, offer to sell, sell, import, and otherwise transfer the Work, where such license applies only to those patent claims licensable by such Contributor that are necessarily infringed by their Contribution(s) alone or by combination of their Contribution(s) with the Work to which such Contribution(s) was submitted. If You institute patent litigation against any entity (including a cross-claim or counterclaim in a lawsuit) alleging that the Work or a Contribution incorporated within the Work constitutes direct or contributory patent infringement, then any patent licenses granted to You under this License for that Work shall terminate as of the date such litigation is filed.
4. Redistribution. You may reproduce and distribute copies of the Work or Derivative Works thereof in any medium, with or without modifications, and in Source or Object form, provided that You meet the following conditions:
 - (a) You must give any other recipients of the Work or Derivative Works a copy of this License; and
 - (b) You must cause any modified files to carry prominent notices stating that You changed the files; and
 - (c) You must retain, in the Source form of any Derivative Works that You distribute, all copyright, patent, trademark, and attribution notices from the Source form of the Work, excluding those notices that do not pertain to any part of

the Derivative Works; and

(d) If the Work includes a "NOTICE" text file as part of its distribution, then any Derivative Works that You distribute must include a readable copy of the attribution notices contained within such NOTICE file, excluding those notices that do not pertain to any part of the Derivative Works, in at least one of the following places: within a NOTICE text file distributed as part of the Derivative Works; within the Source form or documentation, if provided along with the Derivative Works; or, within a display generated by the Derivative Works, if and wherever such third-party notices normally appear. The contents of the NOTICE file are for informational purposes only and do not modify the License. You may add Your own attribution notices within Derivative Works that You distribute, alongside or as an addendum to the NOTICE text from the Work, provided that such additional attribution notices cannot be construed as modifying the License.

You may add Your own copyright statement to Your modifications and may provide additional or different license terms and conditions for use, reproduction, or distribution of Your modifications, or for any such Derivative Works as a whole, provided Your use, reproduction, and distribution of the Work otherwise complies with the conditions stated in this License.

5. **Submission of Contributions.** Unless You explicitly state otherwise, any Contribution intentionally submitted for inclusion in the Work by You to the Licensor shall be under the terms and conditions of this License, without any additional terms or conditions. Notwithstanding the above, nothing herein shall supersede or modify the terms of any separate license agreement you may have executed with Licensor regarding such Contributions.
6. **Trademarks.** This License does not grant permission to use the trade names, trademarks, service marks, or product names of the Licensor, except as required for reasonable and customary use in describing the origin of the Work and reproducing the content of the NOTICE file.
7. **Disclaimer of Warranty.** Unless required by applicable law or agreed to in writing, Licensor provides the Work (and each Contributor provides its Contributions) on an "AS IS" BASIS, WITHOUT WARRANTIES OR CONDITIONS OF ANY KIND, either express or implied, including, without limitation, any warranties or conditions of TITLE, NON-INFRINGEMENT, MERCHANTABILITY, or FITNESS FOR A PARTICULAR PURPOSE. You are solely responsible for determining the appropriateness of using or redistributing the Work and assume any risks associated with Your exercise of permissions under this License.

8. **Limitation of Liability.** In no event and under no legal theory, whether in tort (including negligence), contract, or otherwise, unless required by applicable law (such as deliberate and grossly negligent acts) or agreed to in writing, shall any Contributor be liable to You for damages, including any direct, indirect, special, incidental, or consequential damages of any character arising as a result of this License or out of the use or inability to use the Work (including but not limited to damages for loss of goodwill, work stoppage, computer failure or malfunction, or any and all other commercial damages or losses), even if such Contributor has been advised of the possibility of such damages.
9. **Accepting Warranty or Additional Liability.** While redistributing the Work or Derivative Works thereof, You may choose to offer, and charge a fee for, acceptance of support, warranty, indemnity, or other liability obligations and/or rights consistent with this License. However, in accepting such obligations, You may act only on Your own behalf and on Your sole responsibility, not on behalf of any other Contributor, and only if You agree to indemnify, defend, and hold each Contributor harmless for any liability incurred by, or claims asserted against, such Contributor by reason of your accepting any such warranty or additional liability.

END OF TERMS AND CONDITIONS

APPENDIX: How to apply the Apache License to your work.

To apply the Apache License to your work, attach the following boilerplate notice, with the fields enclosed by brackets "[]" replaced with your own identifying information. (Don't include the brackets!) The text should be enclosed in the appropriate comment syntax for the file format. We also recommend that a file or class name and description of purpose be included on the same "printed page" as the copyright notice for easier identification within third-party archives.

Copyright [yyyy] [name of copyright owner]

Licensed under the Apache License, Version 2.0 (the "License");
you may not use this file except in compliance with the License.
You may obtain a copy of the License at

<http://www.apache.org/licenses/LICENSE-2.0>

Unless required by applicable law or agreed to in writing, software distributed under the License is distributed on an "AS IS" BASIS,

WITHOUT WARRANTIES OR CONDITIONS OF ANY KIND, either express or implied.
See the License for the specific language governing permissions and
limitations under the License.

IBM Global Data Synchronization for WebSphere Product Center also includes the
following software, portions of which were licensed from the World Wide Web Consortium (W3C):

- Apache XMLBeans v1.0.3
- Apache Commons-JXPath v1.2

This software is licensed to you under the terms and conditions of the
International Program License Agreement, subject to its Excluded Components
provisions. IBM is required to provide the following notice to you in
connection with portions of this software:

W3C SOFTWARE NOTICE AND LICENSE

<http://www.w3.org/Consortium/Legal/2002/copyright-software-20021231>

This work (and included software, documentation such as READMEs, or other related items) is being
provided by the copyright holders under the following license. By obtaining, using and/or copying this work,
you (the licensee) agree that you have read, understood, and will comply with the following terms and
conditions.

Permission to copy, modify, and distribute this software and its
documentation, with or without modification, for any purpose and without fee or royalty is hereby granted,
provided that you include the following on ALL copies of the software and documentation or portions
thereof, including modifications:

1. The full text of this NOTICE in a location viewable to users of
the redistributed or derivative work.
2. Any pre-existing intellectual property disclaimers, notices, or
terms and conditions. If none exist, the W3C Software Short Notice should be included (hypertext is preferred,
text is permitted) within the body of any redistributed or derivative code.
3. Notice of any changes or modifications to the files, including
the date changes were made. (We recommend you provide URIs to the location from which the code is
derived.)

THIS SOFTWARE AND DOCUMENTATION IS PROVIDED "AS IS," AND COPYRIGHT HOLDERS MAKE
NO REPRESENTATIONS OR WARRANTIES, EXPRESS OR IMPLIED, INCLUDING BUT NOT LIMITED TO,
WARRANTIES OF MERCHANTABILITY OR FITNESS FOR ANY PARTICULAR PURPOSE OR THAT THE
USE OF THE SOFTWARE OR DOCUMENTATION WILL NOT INFRINGE ANY THIRD PARTY PATENTS,
COPYRIGHTS, TRADEMARKS OR OTHER RIGHTS.

COPYRIGHT HOLDERS WILL NOT BE LIABLE FOR ANY DIRECT, INDIRECT, SPECIAL OR
CONSEQUENTIAL DAMAGES ARISING OUT OF ANY USE OF THE SOFTWARE OR DOCUMENTATION.

The name and trademarks of copyright holders may NOT be used in advertising or publicity pertaining to the software without specific, written prior permission. Title to copyright in this software and any associated documentation will at all times remain with copyright holders.

This formulation of W3C's notice and license became active on December 31 2002. This version removes the copyright ownership notice such that this license can be used with materials other than those owned by the W3C, reflects that ERCIM is now a host of the W3C, includes references to this specific dated version of the license, and removes the ambiguous grant of "use". Otherwise, this version is the same as the previous version and is written so as to preserve the Free Software Foundation's assessment of GPL compatibility and OSI's certification under the Open Source Definition. Please see our Copyright FAQ for common questions about using materials from our site, including specific terms and conditions for packages like libwww, Amaya, and Jigsaw. Other questions about this notice can be directed to site-policy@w3.org.

Joseph Reagle <site-policy@w3.org>

Last revised \$Id: copyright-software-20021231.html,v 1.11 2004/07/06 16:02:49
slesch Exp \$

IBM Global Data Synchronization for WebSphere Product Center also includes the following software:

- XML4J 4.3.3

This software is licensed to you under the terms and conditions of the International Program License Agreement, subject to its Excluded Components provisions. IBM is required to provide the following notice to you in connection with portions of this software:

ICU License - ICU 1.8.1 and later
COPYRIGHT AND PERMISSION NOTICE
Copyright (c) 1995-2003 International Business Machines Corporation and others All rights reserved. Permission is hereby granted, free of charge, to any person obtaining a copy of this software and associated documentation files (the "Software"), to deal in the Software without restriction, including without limitation the rights to use, copy, modify, merge, publish, distribute, and/or sell copies of the Software, and to permit persons to whom the Software is furnished to do so, provided that the above copyright notice(s) and this permission notice appear in all copies of the Software and that both the above copyright notice(s) and this permission notice appear in supporting documentation. THE SOFTWARE IS PROVIDED "AS IS", WITHOUT WARRANTY OF ANY KIND, EXPRESS OR IMPLIED, INCLUDING BUT NOT LIMITED TO THE WARRANTIES OF MERCHANTABILITY, FITNESS FOR A PARTICULAR PURPOSE AND NONINFRINGEMENT OF THIRD PARTY RIGHTS. IN NO EVENT SHALL THE COPYRIGHT HOLDER OR HOLDERS INCLUDED IN THIS NOTICE BE LIABLE FOR ANY CLAIM, OR ANY SPECIAL INDIRECT OR CONSEQUENTIAL DAMAGES, OR ANY DAMAGES WHATSOEVER RESULTING FROM LOSS OF USE, DATA OR PROFITS, WHETHER IN AN ACTION OF CONTRACT, NEGLIGENCE OR OTHER TORTIOUS ACTION, ARISING OUT OF OR

IN CONNECTION WITH THE USE OR PERFORMANCE OF THIS SOFTWARE. Except as contained in this notice, the name of a copyright holder shall not be used in advertising or otherwise to promote the sale, use or other dealings in this Software without prior written authorization of the copyright holder.

All trademarks and registered trademarks mentioned herein are the property of their respective owners.

