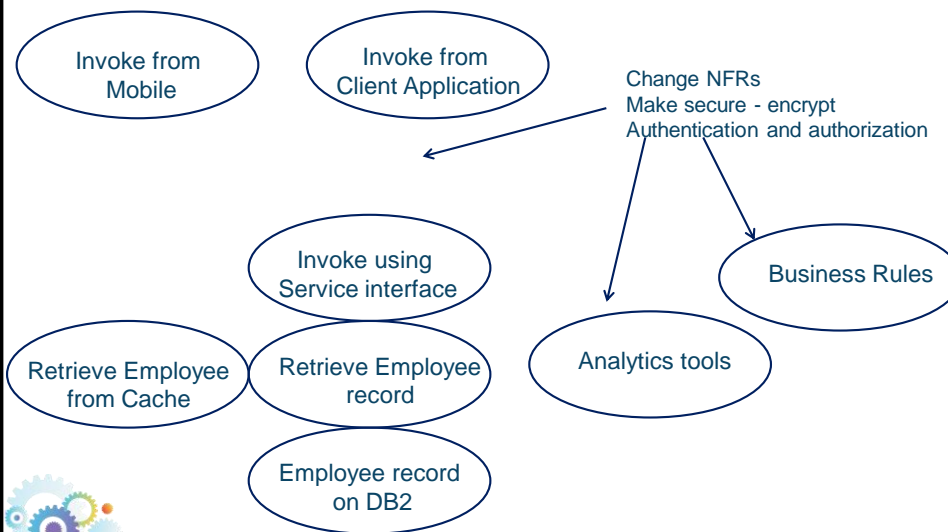


IIB V10 workshop June 2015

Lab Overview for the week



Employee Servicing



The Employee Service Scenario



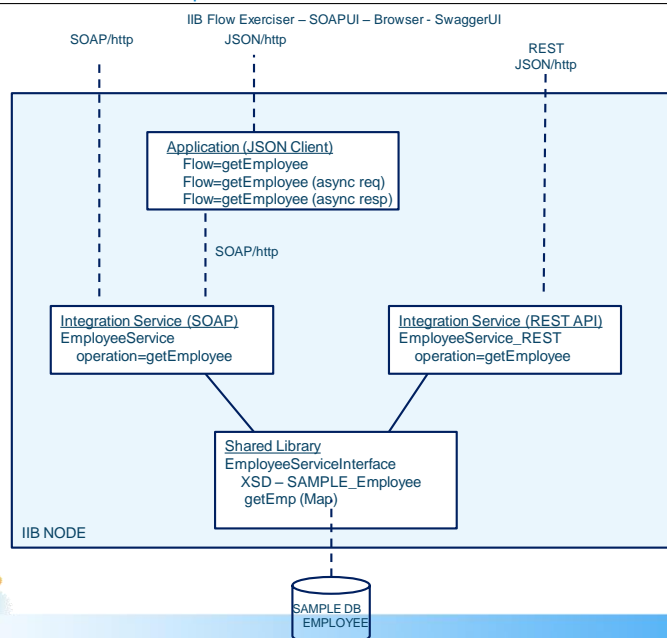
- Retrieve EMPLOYEE details from the SAMPLE DB2 database
- Build a variety of applications to retrieve employee data
 - Foundation – schema and map in Shared Library
 - Integration Service, RESTful API, JSON Client Application
- Extend to support Mobile client devices
- Extend to support Business Rules (check employee bonus - updated by business user)
- Extend to include Analytics – Salary Prediction using R Analytics engine
- Extend to load/retrieve data from Global Cache
- Add Security
 - Message protection – WS-Security
 - Authentication and authorization – LDAP and X.509 certs
- Change HTTP connectivity to MQ – with remote QMs
- Add MQ Policy – place queues on an MQAppliance
- Add Security
 - MQ channel encryption from IIB



3

© 2015 IBM Corporation
IBM Integration Bus V10 workshop June 2015

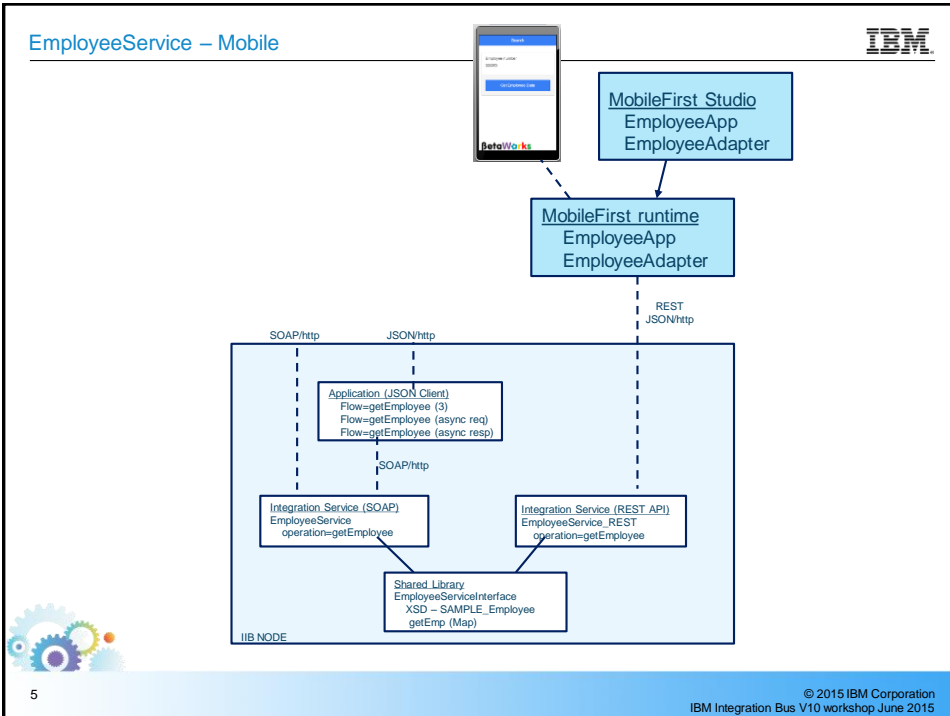
EmployeeService – core components



4

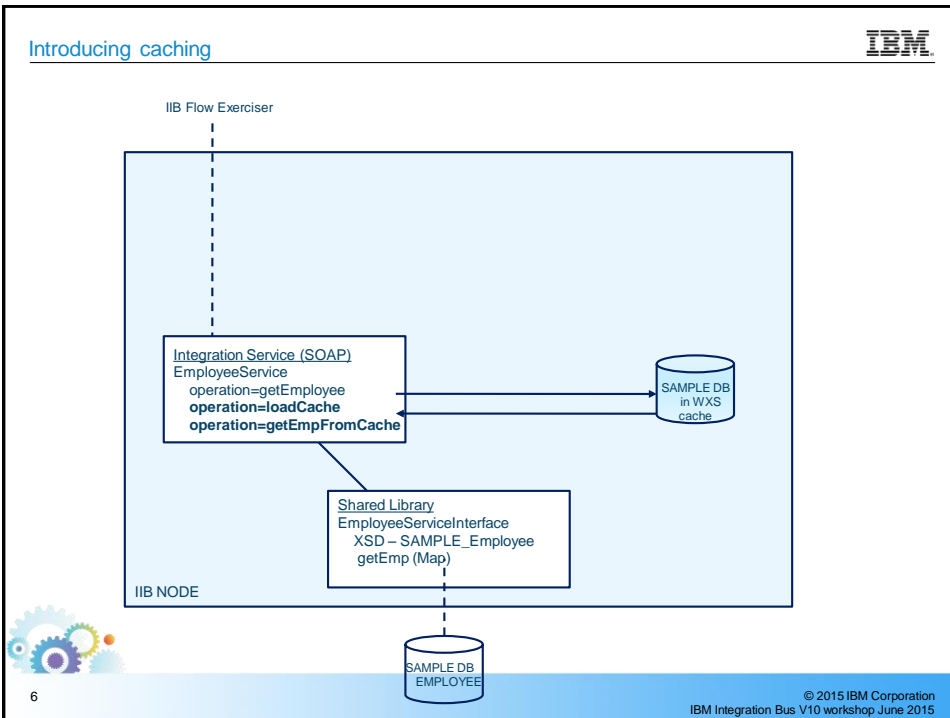
© 2015 IBM Corporation
IBM Integration Bus V10 workshop June 2015

EmployeeService – Mobile



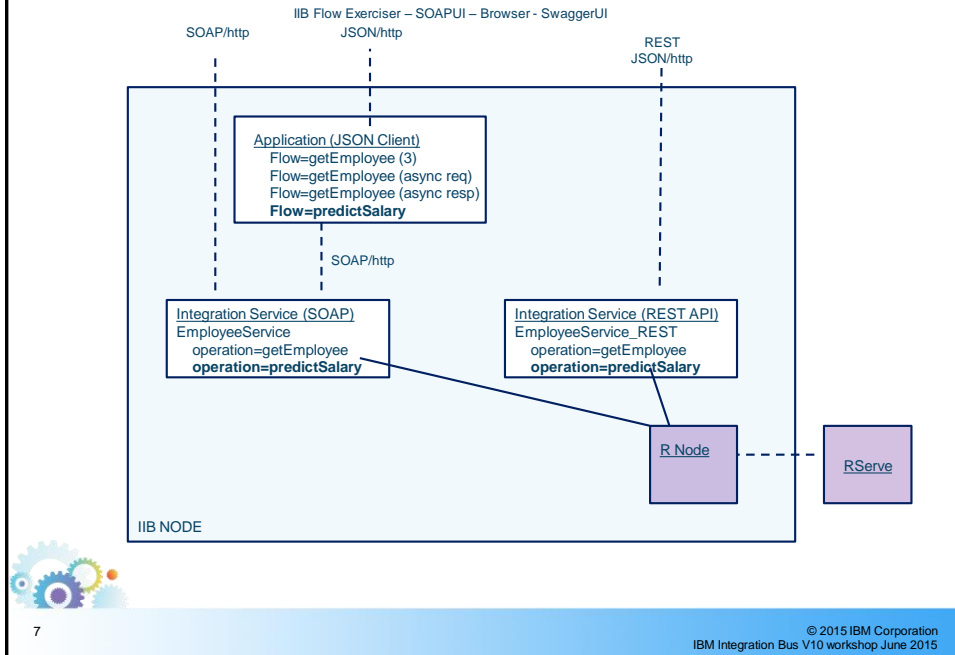
5

Introducing caching

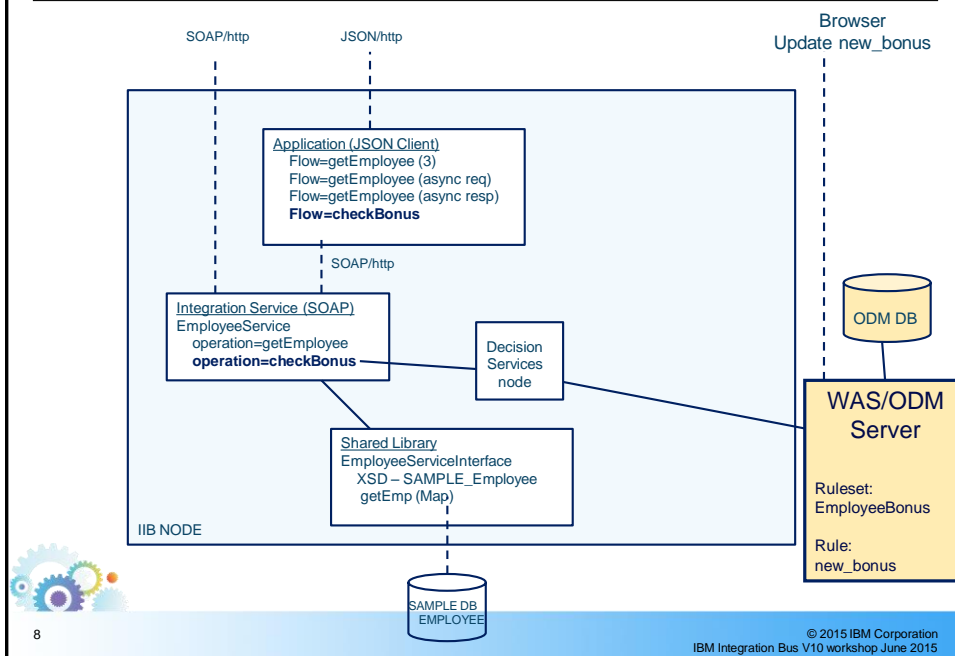


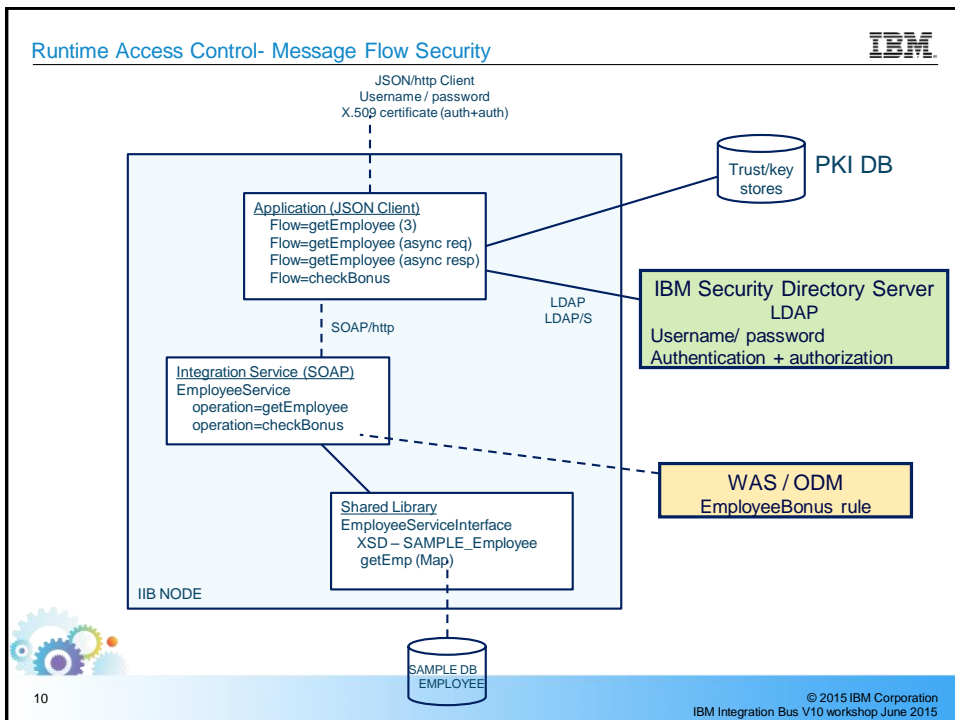
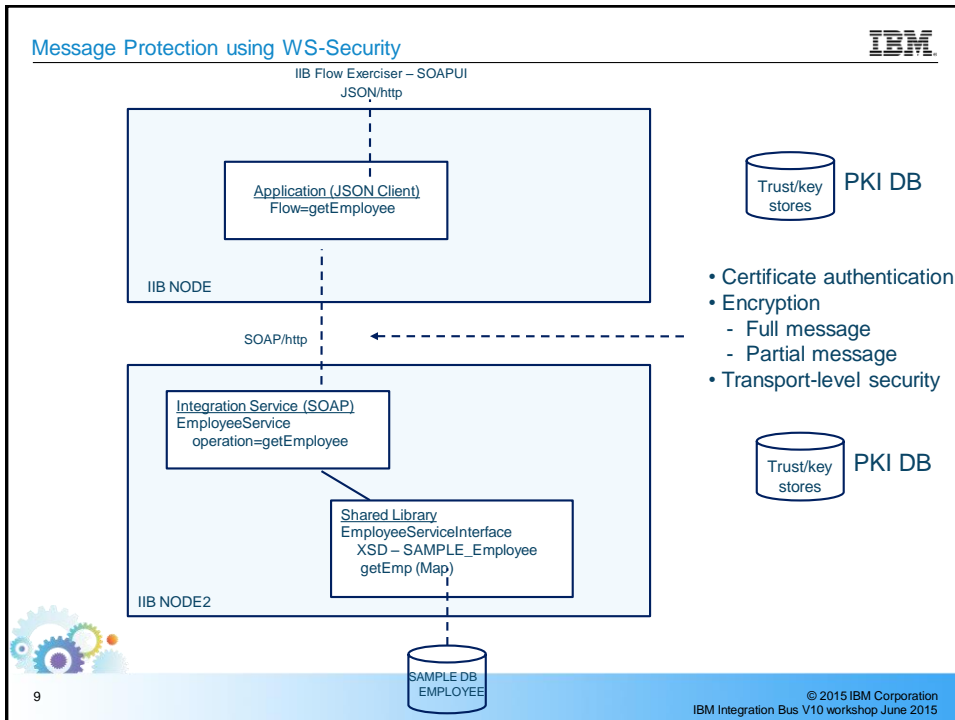
6

Introducing Analytics

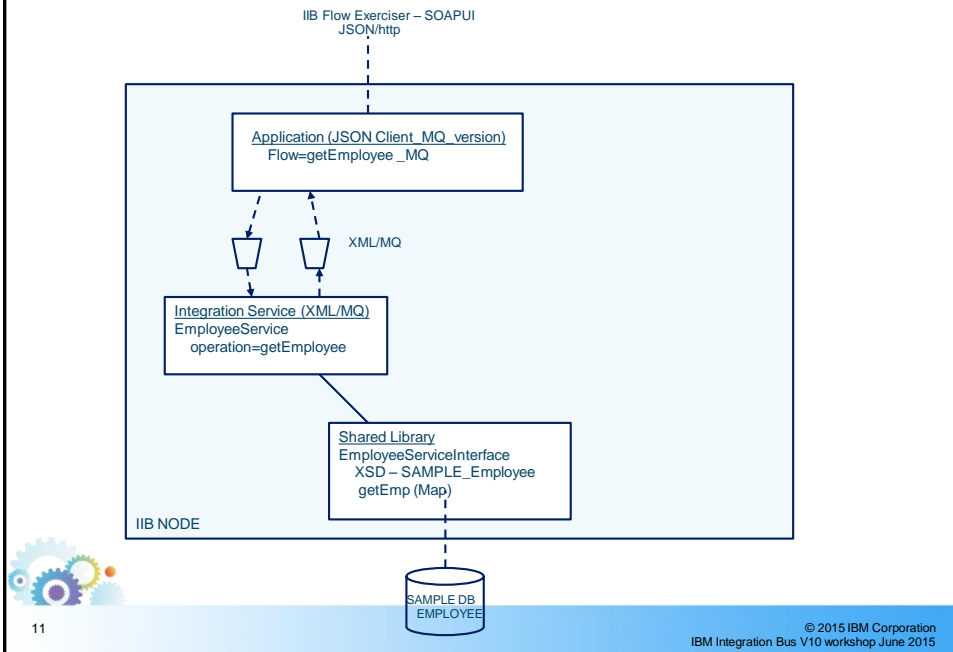


Introducing Decision Services

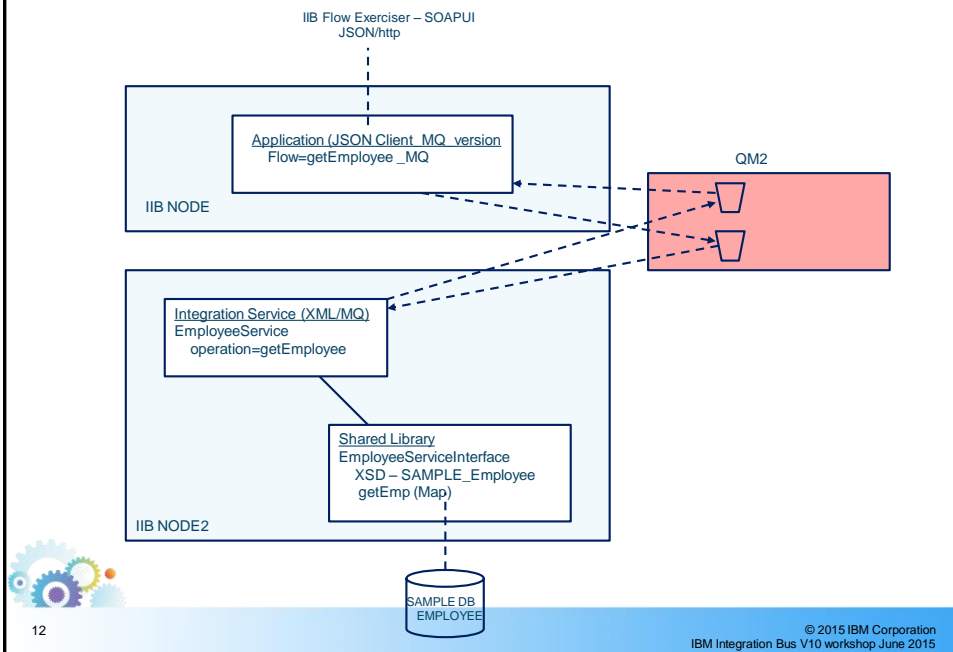




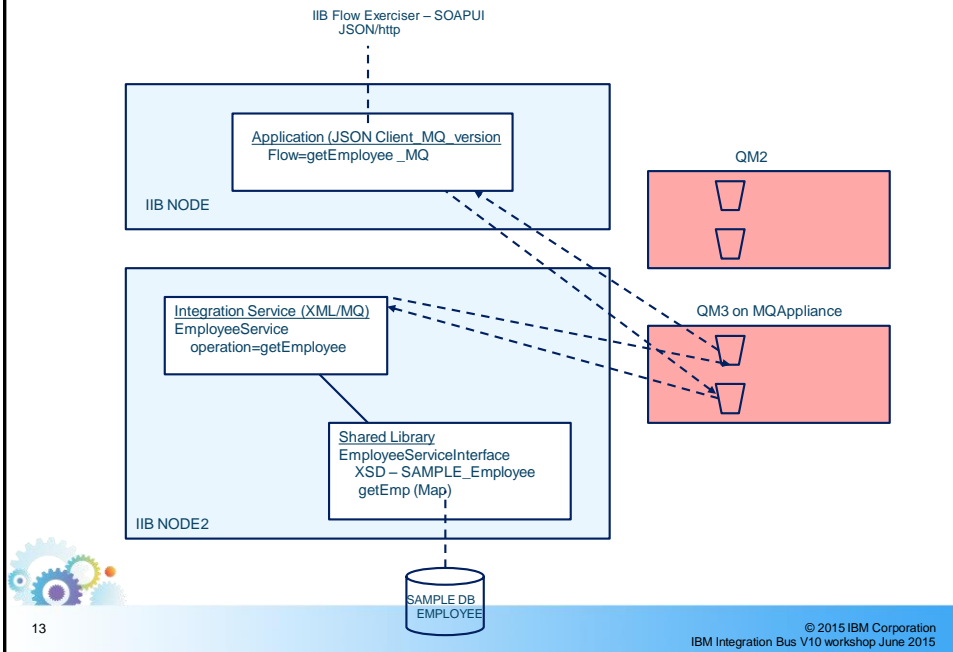
Replacing HTTP with MQ



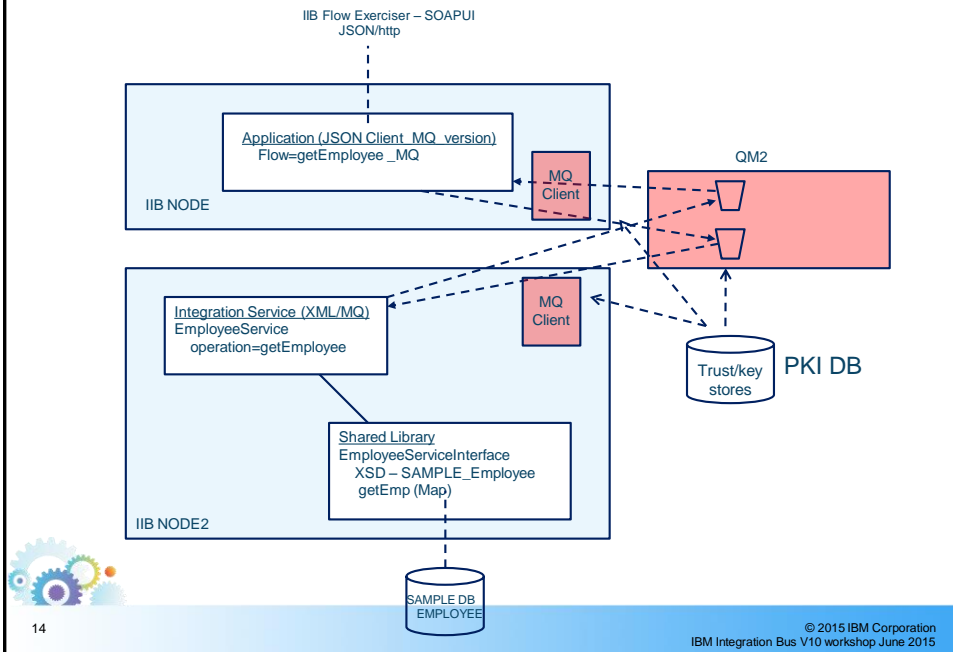
Replacing HTTP with MQ – separate QM



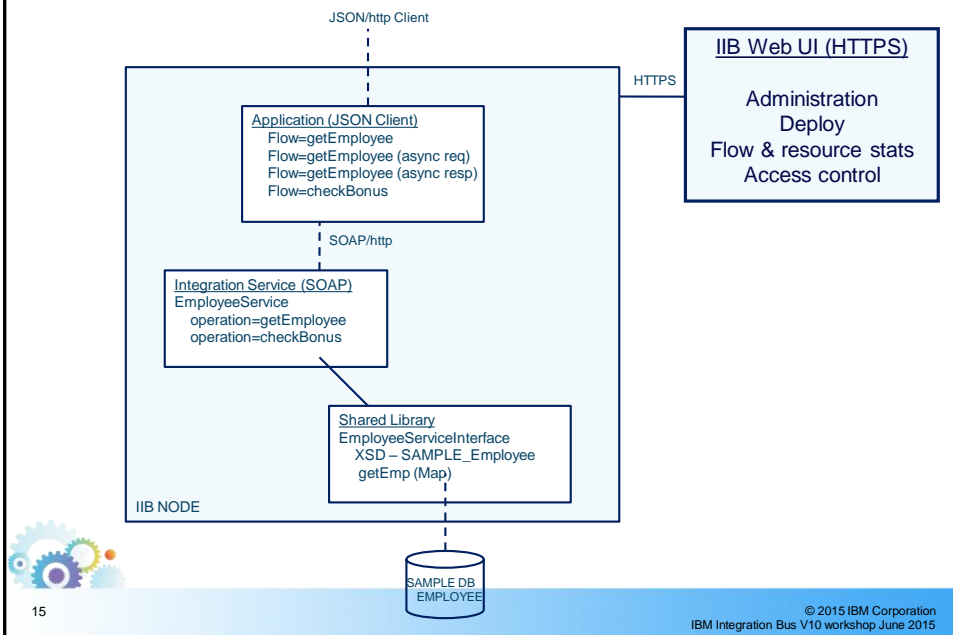
Replacing HTTP with MQ – queues on MQAppliance (Policy switch)



Replacing HTTP with MQ – securing access to Queue Manager



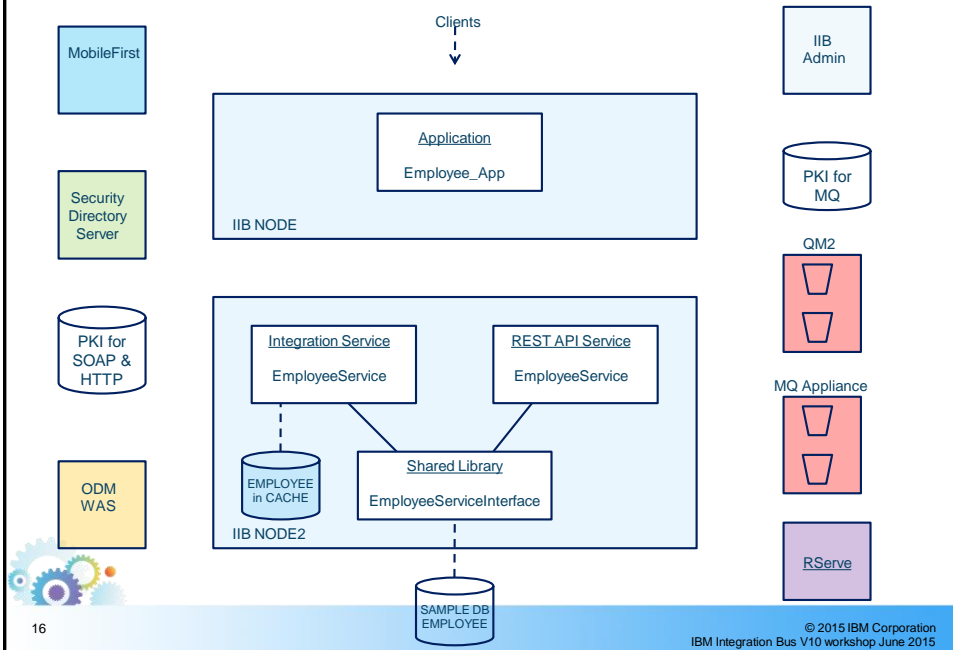
Administration and Statistics



15

© 2015 IBM Corporation
IBM Integration Bus V10 workshop June 2015

The big picture !



16

© 2015 IBM Corporation
IBM Integration Bus V10 workshop June 2015

1. Message Modelling with DFDL – 6 labs – Basic to Advanced
2. Integration using MQTT
 1. IOT
 2. MQ Telemetry and MessageSight
3. JavaScript API for IIB Integration Services

