

WebSphere® software

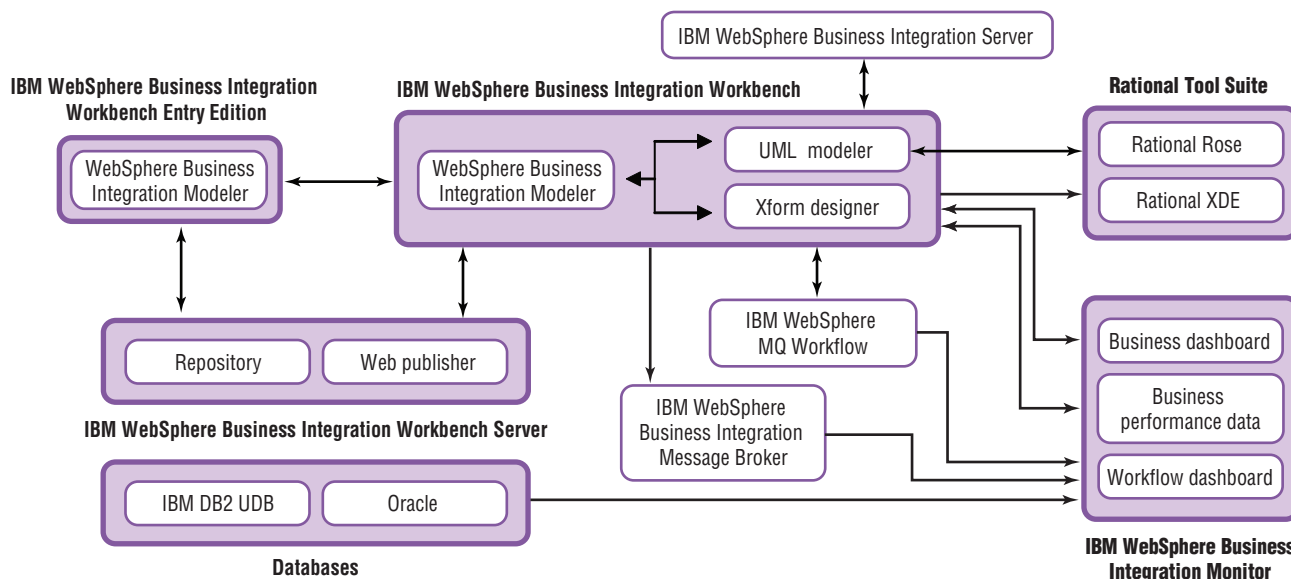
IBM WebSphere Business Integration Monitor, Version 4.2.4

Highlights

- **Tracks business process, organization and employee actions to deliver a real-time view of organizational achievement**
- **Helps you compare process and performance metrics with your company's established business goals to assess the status of targeted outcomes**
- **Feeds real-time data back into process modeling tools to deliver continuous business process improvement**
- **Provides users with the ability to stop, adjust and redirect details of workflow processes—including workload balancing—while they're underway**
- **Helps you base business decisions on actual performance data and resolve issues before they jeopardize business goals**

Gain insight into enterprise performance

As companies strive to become leaner and more competitive, the ability to optimize business processes is more important than ever. The slightest misalignment of business processes or a bottleneck in workflow can jeopardize goals crucial to business success. Often, however, the first signs of critical problems and poor business-process performance are missed company targets—and a negative impact on your bottom line. With greater visibility into your business processes and events, you can more easily identify—and resolve—potential problems before they pose a serious threat to your business goals.



IBM WebSphere Business Integration tools facilitate effective business process management, allowing you to design, implement and monitor key process workflows.

e-business on demand™ can help you see and manage your company as an integrated whole. An on demand e-business is defined by flexibility and unparalleled connectivity. More and more, it's the ability to adapt to changes in the marketplace quickly. In the on demand era, you can monitor your business processes minute by minute—and quickly respond to internal and external conditions as needed to meet business objectives.

To help you reap the benefits of e-business on demand, IBM WebSphere® Business Integration Monitor provides a quantified view of your business processes and output to allow valuable, real-time insight into your company's performance. With WebSphere Business Integration Monitor, you can track your business processes and display important metrics in a convenient enterprise dashboard to check the pulse of company performance. Multiple chart types, such as new, three-dimensional (3-D) pie charts and bar charts, together with other features designed for enhanced usability, help you quickly and easily display your business data for more effective analysis.

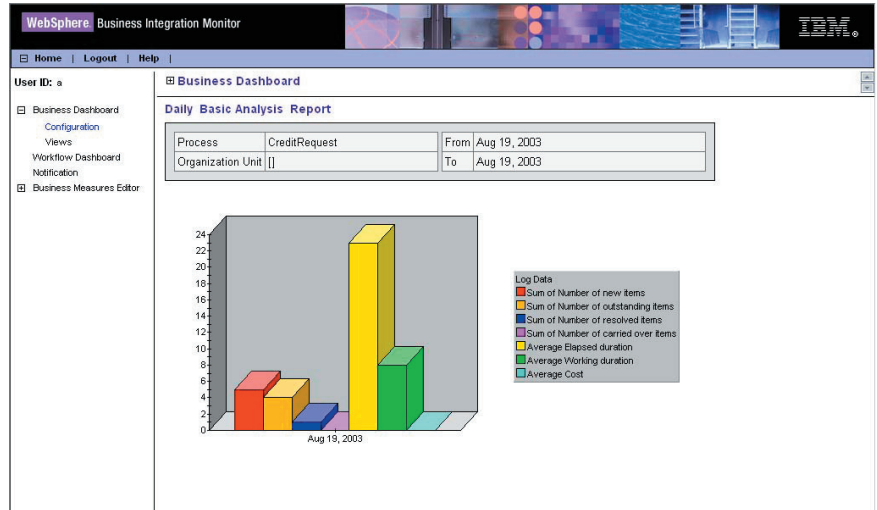


Figure 2. The business dashboard delivers critical enterprise performance data to enable informed decision making.

WebSphere Business Integration Monitor displays the end data generated by IBM solutions for business process management (BPM), including IBM WebSphere MQ Workflow (formerly MQSeries® Workflow), IBM WebSphere Business Integration Message Broker (as well as IBM WebSphere MQ Integrator Broker) and IBM WebSphere Business Integration Modeler. WebSphere Business Integration Monitor can also enable you to monitor nonprocess data by retrieving information from sources such as external database.

An administration client helps simplify the initial configuration and provides support for ongoing administrative tasks, such as cleanup, setting configuration parameters and importing or exporting data. Using real-time BPM data, WebSphere Business Integration Monitor synthesizes system information to offer minute-by-minute status of work items and a view of how business processes are achieving corporate goals.

Manage by the numbers

WebSphere Business Integration Monitor is your enterprise dashboard—capturing your company's real-time business performance measurements.

The application manages the display of data from a variety of environments for a detailed look at company processes. This helps your team confidently make targeted decisions about actions that affect corporate goals. WebSphere Business Integration Monitor supports performance-oriented decision making with two different views of the company—a workflow dashboard and a business dashboard—to deliver comprehensive data you can use whether managing from an executive or operations perspective. A set of customizable portlets runs from inside IBM WebSphere Portal, allowing you to view multiple business reports (displaying different business measurements) simultaneously and create your own user-defined screen layout.

The business dashboard

The WebSphere Business Integration Monitor business dashboard delivers a high-level view of business-process performance to promote informed management decisions. Designed as a decision-making tool for business professionals, the business dashboard enables you to compare actual company performance with targeted goals. Evaluate where your business stands against established milestones—or where strategic shifts in business-process execution may enhance your company’s performance.

Business dashboard capabilities include cost analysis and trend analysis of archived data. You can break down aggregate values by business measures—for example, in the insurance industry you can categorize the *number of new items* by *claim type*. You can quickly and easily create custom report views to display analysis of current or historical data in multiple chart types, including bar, pie and line charts. Actual metrics and statistical information can be easily exported to further analyze and redesign business processes and deliver continuous improvement throughout your enterprise.

The workflow dashboard

The WebSphere Business Integration Monitor workflow dashboard provides an operational console of your company’s business processes, highlighting operations metrics and statistics for an in-depth view of corporate performance. Track where your company stands in relation to its business goals in detail. WebSphere Business Integration Monitor also offers an advanced alert system that you can customize to any manager’s specific requirements. This enables you to take preemptive actions, such as workload balancing, process redesign or process suspension, and to correct

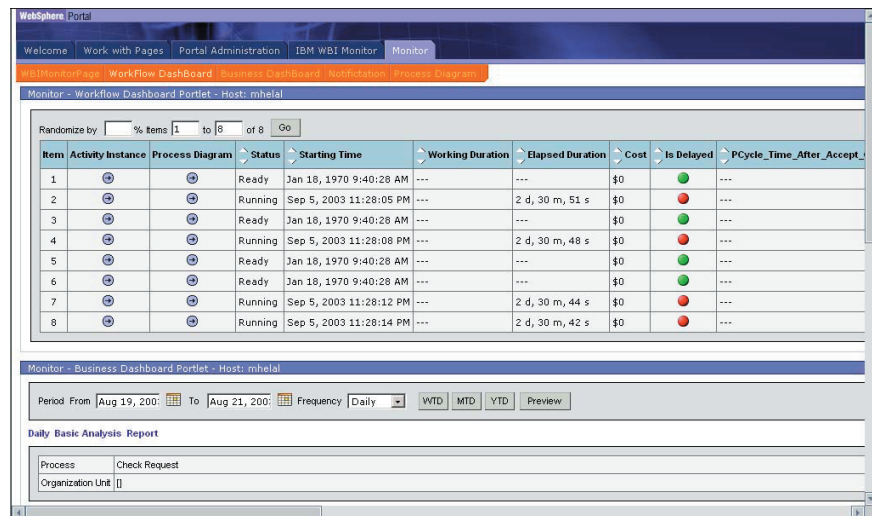


Figure 3. Customizable portlets provide Web-based, personalized access to information from multiple sources

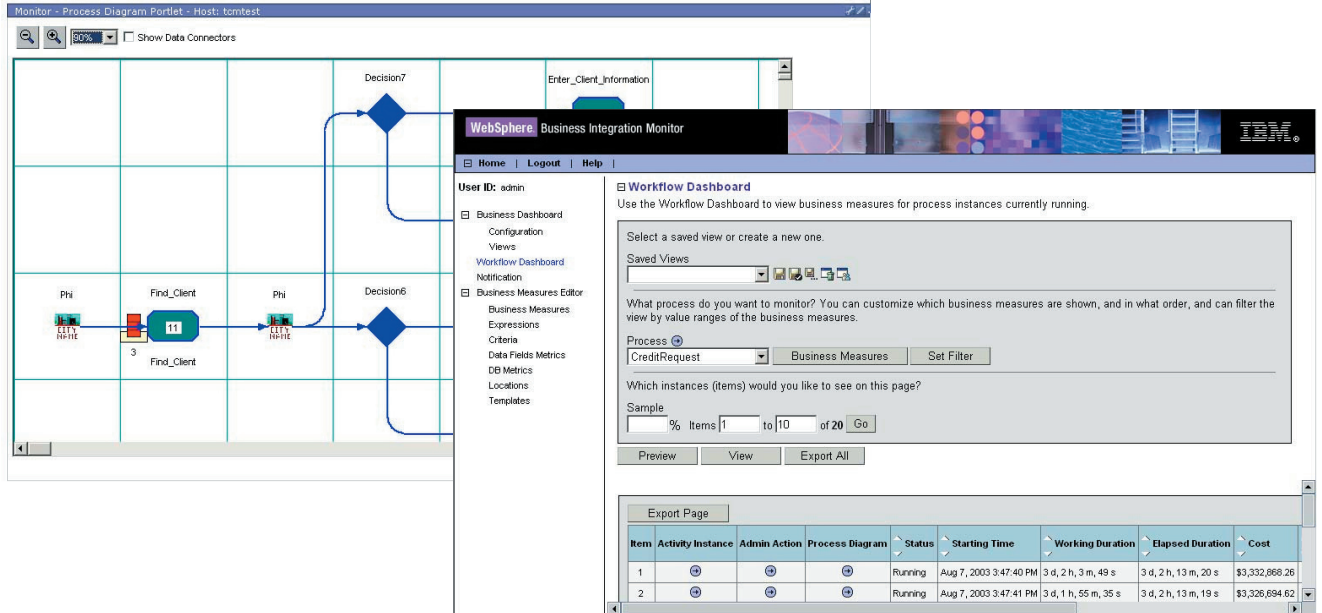


Figure 4. The workflow dashboard allows you to view workflow diagrams and lists for processes that are under way.

operational workflow problems before issues become critical. Application server technology allows remote management of your automated work processes through a convenient Web interface, accessible through most Internet or intranet connections.

WebSphere business integration portfolio

IBM offers a wide range of middleware and operating systems for virtually every computing platform to give you

the right tools to become an e-business on demand. The IBM WebSphere business integration portfolio delivers market-leading middleware that allows you to unite applications, people and business processes so they can work as one. Built on open standards, like Java™ 2 Platform, Enterprise Edition (J2EE), XML and new Web services standards, this robust portfolio is endowed with reliability, scalability and security-rich features—the core strengths you’ve come to expect from IBM.

With a WebSphere business integration solution, your business managers can effectively model and simulate business processes—then refine these processes to increase efficiencies as needs arise. Your IT staff can quickly and easily integrate previously disparate systems within your existing infrastructure, new applications and systems. Your systems can connect seamlessly with your customers’ and trading partners’ systems to deliver immediate,

dynamic—and personalized—information. You'll be able to monitor your processes from end to end to show an up-to-the-minute view of your enterprise performance. Better manage business effectiveness, and readily make improvements to help you gain quicker return on investment (ROI).

For more information

IBM WebSphere Business Integration Monitor is a component of the WebSphere portfolio of business integration infrastructure software. To learn more about WebSphere Business Integration Monitor, visit:

ibm.com/websphere/integration/wbimonitor

IBM WebSphere Business Integration Monitor, Version 4.2.4 at a glance

Hardware requirements

For Microsoft® Windows®

- Intel® Pentium® III, 650MHz or higher
 - 512MB RAM or higher (1GB recommended)
 - 50MB available hard disk drive space, plus sufficient space for the database
-

For IBM AIX® Server

- IBM RS/6000®
 - 1GB RAM or higher
 - 50MB available hard disk drive space, plus sufficient space for the database
-

For Sun Solaris operating environment

- Sun Server
 - 1GB RAM or higher
 - 50MB available hard disk drive space, plus sufficient space for the database
-

For IBM z/OS™ or IBM S/390®

- IBM @server™ zSeries® 900 or IBM S/390®
 - 1GB RAM or higher
 - 50MB available hard disk drive space, plus sufficient space for the database
-

For Web browser client

- Intel Pentium III, 650MHz or higher
 - 128MB RAM (256MB recommended)
-

Software requirements

One of the following

- Windows server
 - Windows NT 4.0 Server (with Service Pack 4 or later) or Windows 2000 server
 - IBM WebSphere Application Server, Version 4.0.2 Advanced Edition, IBM WebSphere Application Server, Version 5.0 with Fix Pack 1 or IBM WebSphere Application Server Network Deployment, Version 5.0 with Fix Pack 1
 - IBM DB2 Universal Database (IBM DB2 UDB) Version 7.2 with Fix Pack 5; IBM DB2 UDB, Version 8.1; Oracle 8.1.7.1; or Oracle 9i
 - AIX server
 - AIX, Version 4.3.3 or AIX, Version 5.1 or higher
 - WebSphere Application Server, Version 4.0.2 Advanced Edition; WebSphere Application Server, Version 5.0 with Fix Pack 1; or WebSphere Application Server Network Deployment, Version 5.0 with Fix Pack 1
 - IBM DB2 UDB, Version 7.2 with Fix Pack 5; IBM DB2 UDB, Version 8.1; Oracle 8.1.7.1; or Oracle 9i
-

IBM WebSphere Business Integration Monitor, Version 4.2.4 at a glance (continued)



Software requirements

- Solaris operating environment server
 - Solaris 8 operating environment, maintenance level August 2001 or higher, or Solaris 9 operating environment
 - WebSphere Application Server, Version 4.0.2 Advanced Edition; WebSphere Application Server, Version 5.0 with Fix Pack 1; or WebSphere Application Server Network Deployment, Version 5.0 with Fix Pack 1
 - IBM DB2 UDB, Version 7.2 with Fix Pack 5, IBM DB2 UDB, Version 8.1; Oracle 8.1.7.1; or Oracle 9i
- z/OS or S/390 server
 - OS/390®, Version 2.8 or higher and z/OS, Version 1.1 or Version 1.2
 - WebSphere Application Server, Version 4.0.1 for z/OS and OS/390
 - DB2 Universal Database for OS/390, Version 7.1 or higher
- Web client
 - Windows 98, Windows NT 4.0, Windows 2000 or Windows XP
 - Java technology-enabled browser (IE 5.5 or higher)
 - For non-English locales, Java plug-in 1.4 or higher

© Copyright IBM Corporation 2003

Software Group
Route 100
Somers, NY 10589
U.S.A.

Produced in the United States of America
09-03
All Rights Reserved

AIX, DB2, DB2 Universal Database, the e-business logo, e-business on demand, @server, IBM, the IBM logo, MQSeries, OS/390, RS/6000, S/390, WebSphere, z/OS and zSeries are trademarks of International Business Machines Corporation in the United States, other countries or both.

Intel and Pentium are trademarks of Intel Corporation in the United States, other countries or both.

Microsoft, Windows and Windows NT are trademarks of Microsoft Corporation in the United States, other countries or both.

Java and all Java-based trademarks are trademarks of Sun Microsystems, Inc. in the United States, other countries or both.

Other company, product and service names may be trademarks or service marks of others.

IBM WebSphere Business Integration Monitor, supported configurations

- To monitor WebSphere MQ Workflow, IBM WebSphere MQ Workflow, Version 3.4 or IBM MQSeries Workflow, Version 3.3.2 is required.
- To monitor WebSphere Business Integration Message Broker, IBM WebSphere Business Integration Message Broker, Version 5.0 or WebSphere MQ Integrator Broker, Version 2.1 is required.

	Windows 2000 and DB2	Windows 2000 and Oracle 9i	AIX and DB2	Solaris operating environment and Oracle 9i	z/OS
WebSphere MQ Integrator Broker, Version 2.1	X	X			
WebSphere Business Integration Message Broker, Version 5.0	X		X	X	X

Note: To monitor WebSphere Business Integration Message Broker and WebSphere MQ Integrator Broker event flows, the WebSphere Business Integration Message Broker Monitor Emitter Node is required. This can be downloaded free of charge at: ibm.com/software/integration/support/supportpacs/individual/ib01.html

Note: For WebSphere Portal support, use IBM WebSphere Portal Enable, Version 4.2.