



IBM Rational Software Architect



- (SOA), Java, J2EE
- IBM Rational Application Developer for WebSphere Software
- J2EE, Java C++ UML
- (Markerless visualization)/

- UML 2

- OCL

Java

- (anti - patterns) Java (refactoring)
- Java

- 가
- Eclipse 가

- Unified Modeling Language(UML 2)
- Eclipse Modeling Framework(EMF) UML 2 Eclipse API

- IBM Rational RequisitePro, IBM Rational ClearCase LT, IBM Rational ClearQuest

- IBM Rational Unified Process

- CVS

- 가
- 가
- IBM Rational Software Architect 가 UML
- Rational Software Architect
- Rational Application Developer for WebSphere Software J2EE, Rational Software Architect Eclipse IBM

Rational Software Architect

가

가

Rational Software Architect Rational Software Modeler

Eclipse

. Eclipse

. Web Diagram

Page Designer

Rational Software Architect

. Eclipse

가

. Eclipse

Java

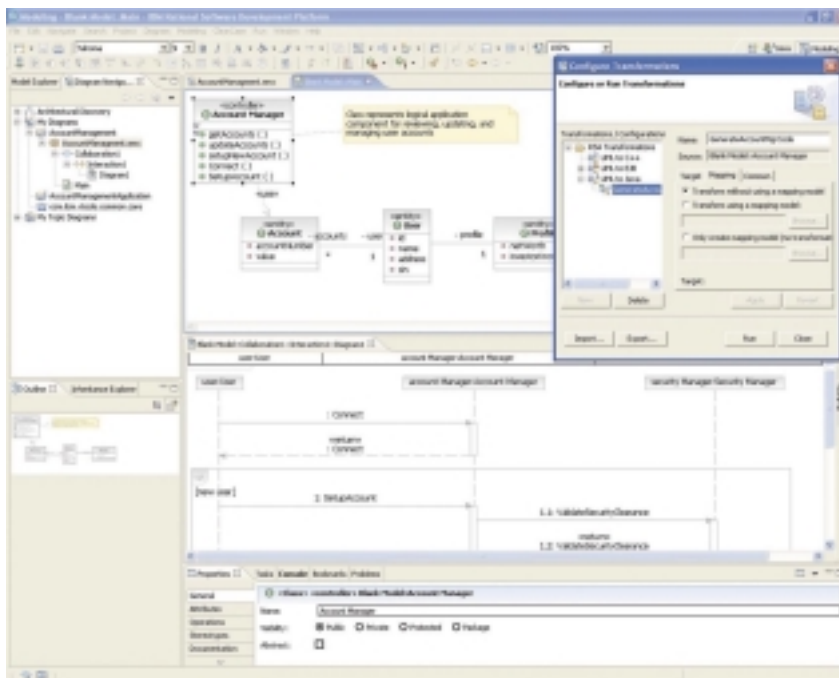
Windows Linux

Eclipse Architect

Rational Software

가

Rational Software Architect



1. Rational Software Architect

Java

IDE(Integrated Development Environment) IDE

. UML(Unified Modeling Language)

가

IDE

UML

가

가

UML

Rational Software Architect Java

Rational Software Architect

IDE

Rational Application Developer for WebSphere Software

가

Rational Software Architect

. Rational Software

UML 2(UML 2)

Architect

가,

“ - (anti - patterns) ”

. OMG(Object Management Group) MDA(Model Driven Architecture)

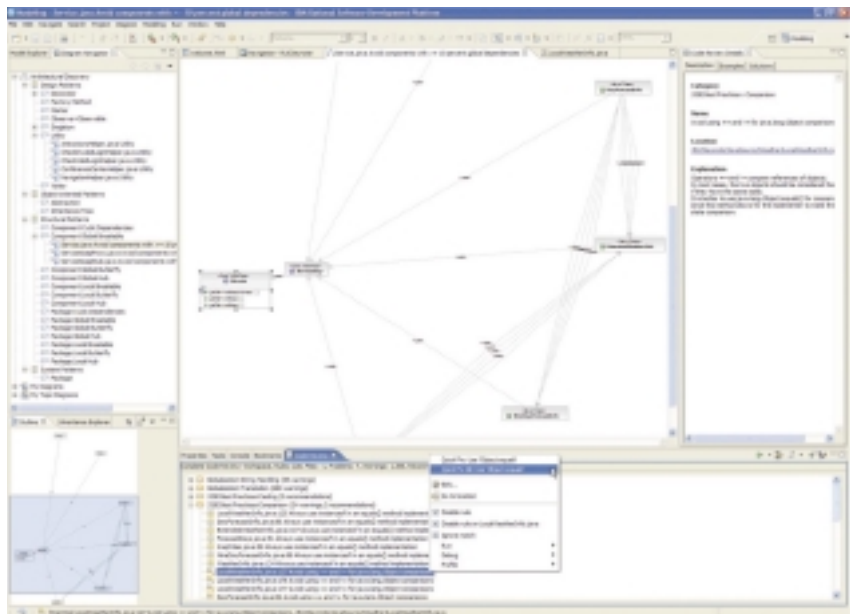
Rational Software Architect Windows Linux

Rational Software Architect

. Rational Software

Architect

MDA



2. Rational Software Architect

가 Rational Software Architect
 RequisitePro

Rational Software Architect IBM Rational Team
 Unifying Platform

가

가

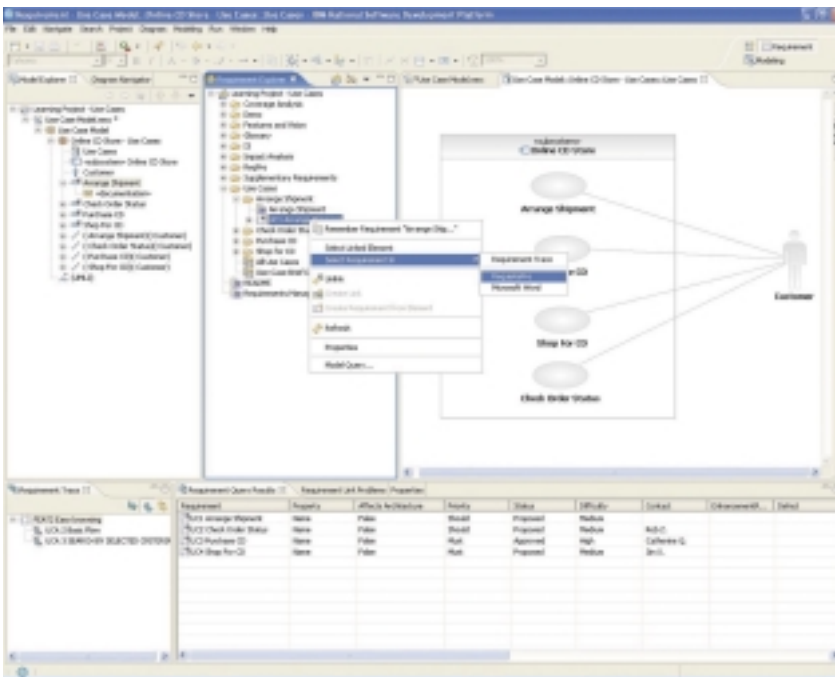
가 Rational Software Architect
 Rational
 ClearCase LT

IBM Rational Professional

Rational Software Architect IBM Rational
 Professional

가 가 CVS(Concurrent Versions System)
 IBM Rational Unified Process
 (RUP)

Windows Linux J2EE/
 Portal/Service -
 .NET



Rational

IBM Rational

Rational

IBM Software Development Platform

Eclipse

ibm.com/

rational

Rational

e-zine(ibm.com/)

[developerworks/rational/rationale](http://developerworks.ibm.com/rational/rationale)

3. Rational Software Architect IBM Rational Team Unifying Platform

Use Case, Class, Sequence, Activity, Composite Structure, State Machine, Communication, Component Deployment UML 2.0 UML 2.0

UML UML

(content - assist) " Cheat Sheets " 가 (Ctrl -), " (recipes) "

Java, Enterprise Java Beans UML Java, EJB abstract view UML

IE IDEF IE IDEF (ER)

Java UML UML 2.0

UML 2.0 Java UML 2.0 Java

C++ UML UML C++ abstract view

Java, C++ EJB 가

OMG Reusable Asset Specification 가 가

가 (in RequisitePro) / , Java

Java (: , OO,) (refactoring)

가

Eclipse IDE Eclipse

WS - I SOA(Service Oriented Architectures) , SOA J2EE 가

- - UI , - - Java

; Java, EJB,

Crystal Reports 가 Java XML C++

C/C++

RequisitePro Context - sensitive & Dynamic Software Architects RUP 가

UML API UML

UML HTML, PDF XML Javadoc UML Javadoc Javadoc Javadoc

Javadoc Javadoc

Java 가 /

, SCM

IBM Rational Software Architect



- : Pentium™ 3, 800 Mhz; : Pentium™ 4, 1.4 GHz
: 768 MB, 1 GB RAM
: XGA 1024 x 768 x 256 - , XGA 1280 x 1024 , high color
true color
Microsoft 가
: 3 GB; 6 GB

Copyright IBM Corporation 2004

(135 - 270) 467 - 12

TEL: (02)3781 - 7114
www.ibm.com/kr

Printed in Korea
All Rights Reserved

IBM 가 International Business
Machines Corporation

IBM, Rational, IBM , ClearCaseLT, ClearCase,
Professional Bundle developerWorks
가 IBM

Microsoft, Microsoft Windows XP, 2003 2000
Microsoft Corporation

Red Hat Red Hat, Inc.

SUSE SUSE AG

Linux Linus Torvalds

ALL RIGHTS RESERVED.

Rational Software
ibm.com/rational

IBM ibm.com

10%

Microsoft™ Windows XP Professional, Service Pack 1, 2
Microsoft Windows 2000 Professional, Service Pack 3, 4
Microsoft Windows 2000 Server, Service Pack 3, 4
Microsoft Windows 2000 Advanced Server, Service Pack 3, 4
Microsoft Windows 2003 Standard Edition
Microsoft Windows 2003 Enterprise Edition
Linux: Red Hat Enterprise Linux WS 3.0
Linux: SuSE Linux Enterprise Server 9.0

IBM Rational RequisitePro v2004 SR3
IBM Rational ClearCase LT ()
- Windows: v2002, v2003 SR3
- Linux: v2004 SR3
IBM Rational ClearQuest v2004 SR3
Concurrent Versions System (CVS) v1.11.1p1
IBM Rational Unified Process (RUP) v2004 SR3