

WebSphere software

# IBM WebSphere Studio Application Developer Version 5.1.2



J2EE

가

가

Rational ClearCase LT

가

UML Visual Editor Java  
EJB

IBM Web -

Sphere Studio Application Developer

J2EE™(Java™ 2 Enterprise Edition)

IBM, IBM

Eclipse (plug - ins)

WebSphere Studio

Application Developer

가

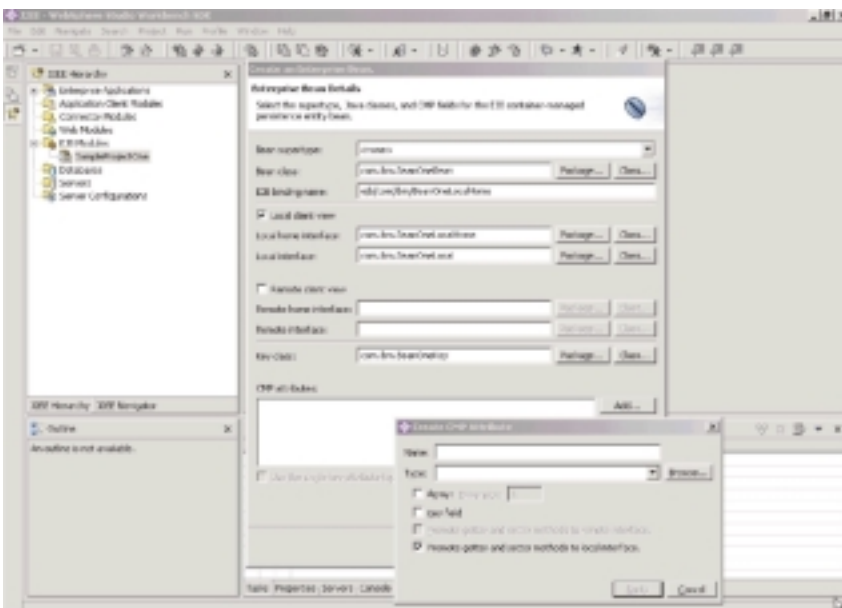
Eclipse  
Application Developer

WebSphere Studio

IBM, IBM

Eclipse

가



WebSphere Studio Application Developer

WebSphere Studio Application Developer  
e-business

IDE(integrated development environment)

### J2EE

J2EE, Version 1.2 Version 1.3

(message-driven beans) EJB™ (Enterprise Java Beans™) Version 2.0, EJB QL(Query Language), CMP(Container Managed Persistence) Version 2.0, WAR (Web archive), EAR (enterprise archive)

J2EE

IBM

WebSphere Application Server

### Java

WebSphere Studio Application Developer

Java Development Kit Version 1.4

Java

Visual Editor for Java AWT(Abstract Window Toolkit) Swing

GUI

GUI

UML(Unified Modeling Language) Visual Editor for Java and EJB UML

Java

WebSphere Studio Application Developer

WebSphere Studio Application Developer

UDDI (Universal Description, Discovery and Integration), Version 2, SOAP(Simple Object Access Protocol), WSDL(Web Services Description Language) WSIL(Web Services Inspection Language)

WS-I(Web Services Interoperability) Basic Profile, Version 1.0

WS-I Basic Profile, Version 1.0

WSDL

가

WSDL WSIL

SOAP

Java

UDDI, Version 2

### XML

WebSphere Studio Application Developer

XML

XML

DTD(Document Type Definition)

XML

DTD XML

IBM DB2 XML Extender가

DB2

XML

, DB2

XML

DAD(Document Access Definition)

XML

(RDB)

DTD

Xalan

XSL(Extensible Stylesheet Language)

XSL

XML

HTML

XML

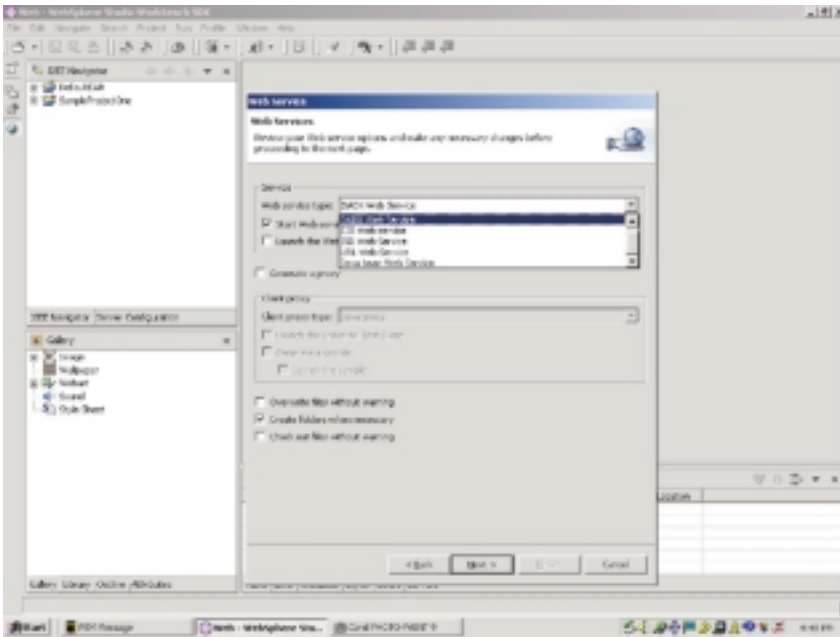
WebSphere Studio Application Developer

, EJB

IBM DB2

Universal Database™, IBM Informix, Oracle, Microsoft SQL Server MySQL

JDBC™(Java Database Connectivity)



Model - View - Controller  
Struts 1.1

Struts

가  
JavaServer Faces

JSF

Service Data Objects

2.

JavaBeans EJB  
. WebSphere Studio

WSDL , OAP

Java

EGL(Enterprise

Generation Language)

4GL

JSF

Faces

SQL

SQL

SQL

(Object - to - relational mapping)

(top - down),

(meet -

in - the - middle)

(bottom - up

support)

EJB

HTML

JSP

SQL

SQL - to - XML

XML XSL , DTD , XSD

(Extensible Stylesheet Definition) , HTML

. SQLJ(SQL for

Java)

SQLJ

DB2 SQLJ

WebSphere Studio Application Developer

Web Site Designer

SQL

가

WebArt Designer

Animated GIF

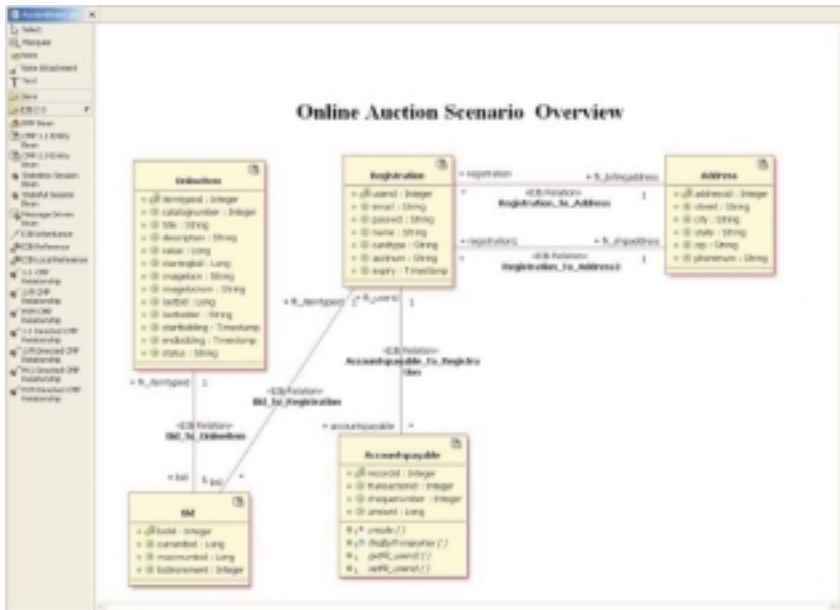
Designer

(original

가

, Java

art)



3. UML Visual Editor for Java and EJB UML

JAR  
 (Java archive) WAR  
 EAR  
 WebSphere Studio Application Developer  
 EAR  
 (deployment descriptors)

WebSphere Application Server, IBM  
 WebSphere Application Server - Express  
 Apache Tomcat

EGL J2EE  
 EGL 가 WebSphere Studio  
 , Java Web -  
 Sphere Portal  
 4GL 4  
 )” .EGL Informix 4GL  
 , Web - Sphere J2EE  
 Studio Informix  
 .EGL WebSphere  
 Studio IBM Portlet API  
 .EGL JSF(Java Server Faces) , Java 가 EGL JSR 168  
 JSP . Page Designer  
 가 EGL  
 JSP “ ” Struts Web Diagram  
 JSP EGL Editor Faces  
 Java Server Faces

WebSphere Studio 가  
 Hot Method Replace  
 Active Script Debugger  
 JavaScript  
 Active Script  
 Deployment Toolkit for WebSphere  
 Studio, WebLogic Edition  
 J2EE  
 , BEA WebLogic Server,  
 Version 6.1, 7.0 8.1

WebSphere Studio Application Developer

UML(Unified Modeling Language) Visual Editor  
for Java and EJB UML  
J2EE

IBM e - business Web -  
Sphere  
WebSphere Application Server  
IBM  
WebSphere Studio Application Developer  
e - business

가

Editor  
(re - factoring)  
WebSphere  
Studio Application Developer UML  
Java EJB

WebSphere  
가  
IBM WebSphere Studio Application Developer

가 가

UML Java  
EJB

[ibm.com/software/awdtools/studioappdev](http://ibm.com/software/awdtools/studioappdev)

(bean)

가

J2EE , Version 1.2  
Version 1.3

WebSphere Studio Application Developer IBM  
Rational ClearCase IBM Rational  
ClearQuest

J2EE , Version 1.2 Version 1.3

J2EE , Version 1.3

WebSphere Studio  
Application Developer

Web - Sphere Application  
Server, Version 5

WebSphere  
Studio Application Developer

WebSphere Studio Application Developer

J2EE

IBM Rational ClearCase LT가

WebSphere Studio Application  
Developer CVS  
(Con - current Versions System)

---

## IBM WebSphere Studio Application Developer, Version 5.1.2

---

Eclipse                      WebSphere Studio  
Java   J2EE                      , XML, Web, JSP,

### Java

Java Development Kit(JDK™), Version 1.4.1  
Red Hat Linux Version 7.2   Version 8.0   SuSe Linux, Version 7.2   Version 8.1  
가   JRE (Java Runtime Environment)

(Refactoring)

AWT   Swing                      Java                      GUI                      Visual Editor for Java. Javadoc

---

### J2EE, Version 1.2   Version 1.3

EJB, Version 1.1   Version 2.0, Servlet, Version 2.2   Version 2.3, JSP, Version 1.1   Version 1.2  
JAR, EAR, WAR  
BMP(bean - managed persistence)   CMP(container - managed persistence)  
JMS(Java Message Service)   EJB QL  
Object - to - relational mapping (top - down, meet - in - the - middle   bottom - up)

EJB  
WebSphere Application Server 5.1                      JDK 1.4.1                      J2EE  
EJB                      JAR                      EJB  
EJB                      (snippet)                      , EJB  
Java   J2EE                      UML Visual Editor for Java and EJB

---

### XML

XML                      : XML                      , DTD                      , XML  
XML                      : XML - to - XML                      , XSLT                      , XSL  
- to - XML                      : RDB - to - XML                      DAD(document access definition)                      , DAD  
XPath                      , XSL                      XML                      XML

---

### Web

HTML, XHTML, CHTML, WML, Struts  
Model - View - Controller                      Struts 1.1  
Web Site Designer  
Page Designer                      (round - trip)                      JSF  
Java                      JSP  
JavaScript   Visual Basic Script

IBM Portlet API   JSR 168                      API  
WebSphere Portal  
JavaServer Faces                      UI                      , Struts

가                      WebSphere Portal

---

### Enterprise Generation Language

EGL                      Java  
EGL, JSP                      Java  
onPageLoad                      GUI -                      , UI  
가                      가

---

## IBM WebSphere Studio Application Developer, Version 5.1.2 ( )

---

### Web Services

UDDI, Version 2.0, SOAP, Version 1.1, WSDL, Version 1.1, WSIL

WS - I

UDDI

JavaBeans, EJBs, SQL

SOAP (wrapping) WSDL

WebSphere Application Server Tomcat

WSDL

IBM Cloudscape™, DB2, Informix, Microsoft SQL Server, MySQL, Oracle9i Sybase

SQL

SQL

XML

DAD

SQLJ

(Stored Procedure Builder)

SCM

Rational ClearCase Rational ClearQuest

IBM Rational ClearCase LT

CVS

Rational ClearCase LT / Versioning

JSP , , HTML EJB

EJB

TCP/IP

EJB

Ant JUnit

Log analyzer for WebSphere Application Server

Tomcat 3.2.1 4.0 ( )

WebSphere Application Server Advanced Edition, Version 4

WebSphere Application Server, Version 5 5.1

WebSphere Application Server - Express, Version 5 5.1( )

BEA WebLogic Server, Version 6.1, 7.0 8.1

Microsoft Windows NT Windows 2000

Microsoft Windows XP

Linux

---



International Business Machines Corporation 2004

467 - 12

## IBM WebSphere Studio Application Developer, Version 5.1.2

Intel Pentium II minimum; Pentium III 500MHz

- Microsoft Windows 2000 Windows XP : SVGA (800 x 600), 1024 x 768

- Linux : XVGA (1024 x 768)

512MB RAM . 768MB RAM

: WebSphere Studio Application Developer

1.3GB

가 ( )

TEL : (02)3781 - 7114  
www.ibm.com/kr

Printed in Korea  
All Rights Reserved

ClearCase, Cloudscape, DB2, DB2 Universal Database, e-business, IBM, IBM, Informix, Rational WebSphere International Business Machines Corporation

Java Java  
Sun Microsystems, Inc.

Microsoft Windows  
Microsoft Corporation

WebArt Designer AnimatedGIF Designer  
Linux

PLACEMENT ONLY PLACEMENT ONLY

Windows 2000 Professional SP 2

Windows XP Professional SP 1

Red Hat Linux Version 7.2 Version 8.0

SuSe Linux, Version 7.2 Version 8.1

- Windows : Microsoft Internet Explorer, Version 5.5 SP1 Netscape Navigator Version 4.76 (Universal Test Client Web Services Explorer Netscape Navigator, Version 6.0 Microsoft Internet Explorer, Version 5.0)

- Linux : Netscape Navigator, Version 4.6 Version 6.0 Mozilla, Version 7.0 (Universal Test Client Web Services Explorer Netscape Navigator Version 4.6 Mozilla Version 7.0)

TCP/IP

JRE(Java Runtime Environment) Version 1.3

### Run - time environment support

WebSphere Application Server - Express (Version 5.0 5.1)

WebSphere Application Server (Version 4.0, 5.0 5.1)

Apache Tomcat( )