

O22

# SUSE LINUX Enterprise Server 9

*Technical Overview - v4*

**CONFIDENTIAL**



**Novell.**



# Agenda

---

Target Audiences and Business Concerns

SUSE LINUX Build Process and Common Code Base

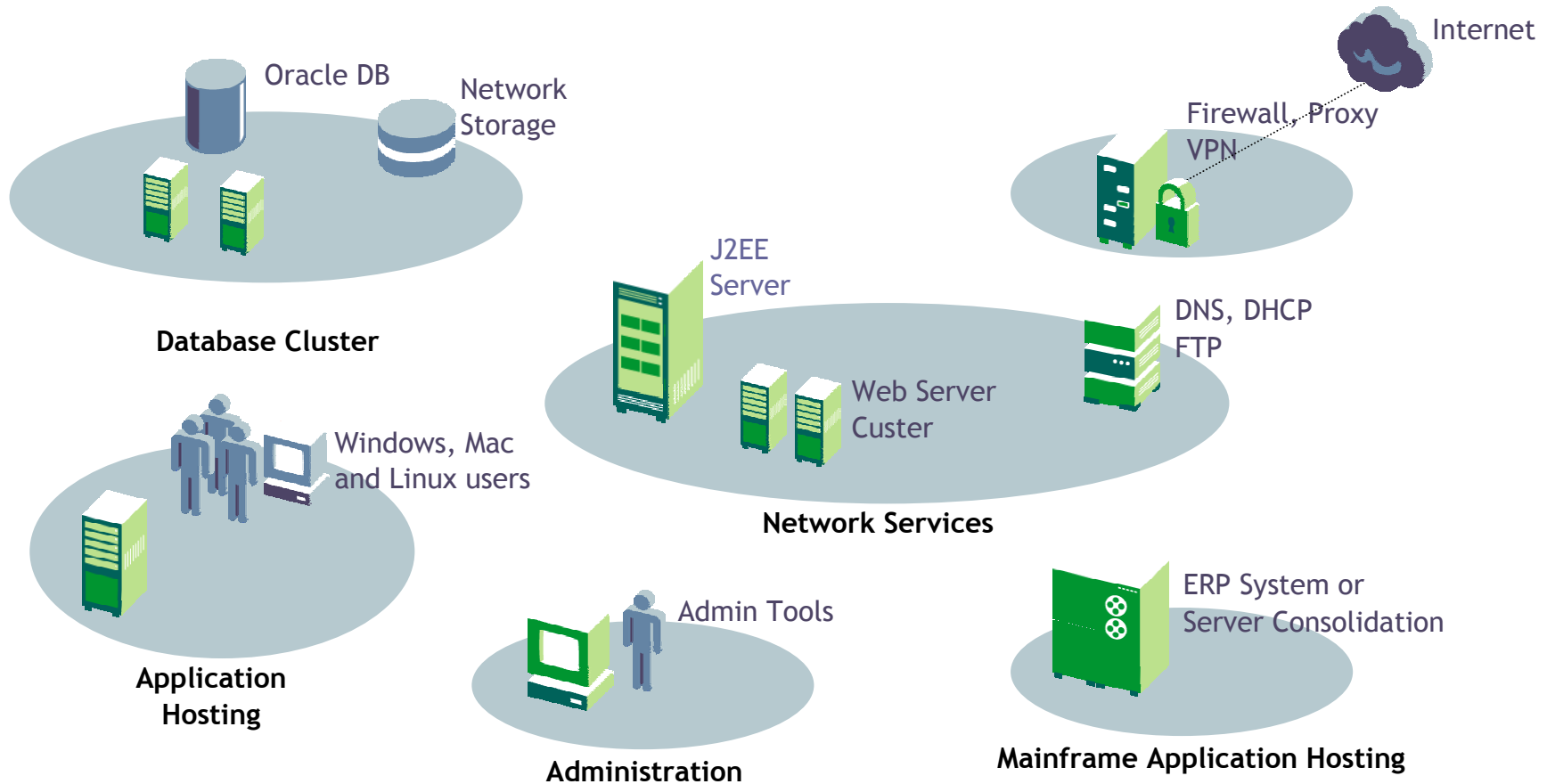
SUSE LINUX Enterprise Server 9 Overview

- Performance and Scalability
- High Availability and Fail-over
- Deployment and Management
- Security
- Application Services
- Backed by Novell

Screenshots

# Target Audiences & Business Concerns

# SUSE LINUX Enterprise Servers in the Enterprise



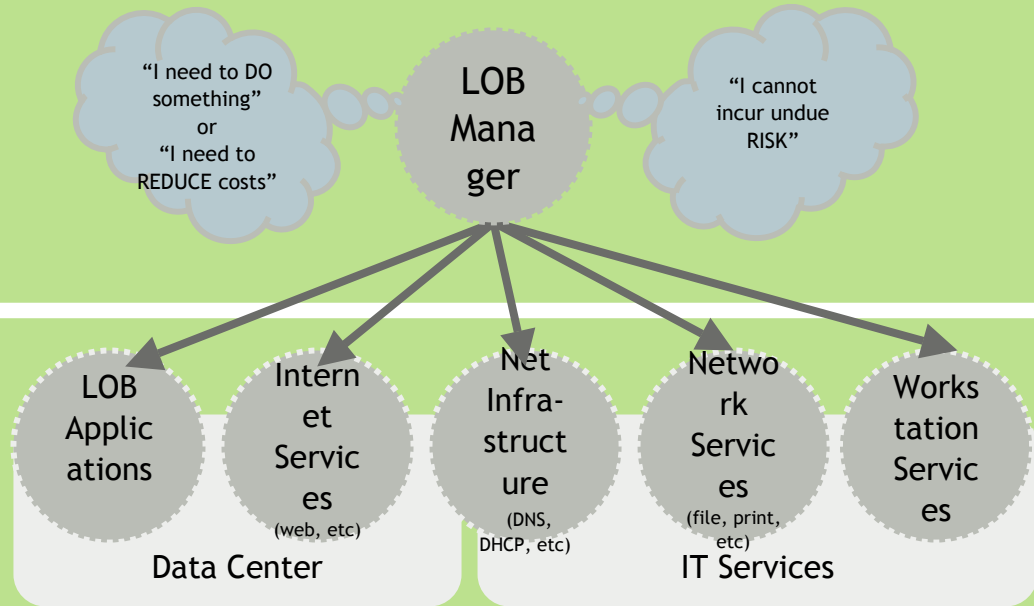
# Enterprise Buying Chain

1 Enterprise purchasing actions begin with business initiatives

2 Enterprise Buying Personas  
*Potential Linux Buyers*

3 Two major buying personae

- Data center buyers
- Services and infrastructure buyers





# IT Infrastructure and Services Audience

## **Mission:**

Provide network infrastructure services: to general end-users and workgroups

## **Examples:**

- File and print services
- Document management
- Collaboration and teaming
- Intranet services
- Branch office support
- Network services



# IT Infrastructure and Services Audience Concerns

---

## “How can I reduce costs?”

- File, print, Web, network services built-in to SUSE LINUX
- Support for ISV applications

## “How can I improve end user satisfaction?”

- Services easy for IT administrators to publish and manage
- Services easy for end users to find and configure
- Remote administration and automated deployment
- Easy to troubleshoot

## “Who can I call for support”

- 7/24/365 technical support, with guaranteed response times
- Seven call centers worldwide, over 800 dedicated staff
- Support staff who can speak Linux, Windows, Mac, NetWare, Unix and applications



# Data Center Audience

## Mission:

Deliver and support mission-critical line-of-business applications

## Examples:

- Corporate Web site
- Enterprise resource planning
- Customer relationship Management
- Supply chain management





# Data Center Audience Concerns

---

## “How can I eliminate downtime?”

- Rigorous 5-point quality and stress testing with input from major vendors
- Unique high availability features included
- Novell's superior technical support and partner network

## “How can I guaranteed data privacy?”

- Robust security features: firewall, proxy, certificate management, encrypted file systems
- Industry's highest certification

## “How can I ensure application compatibility?”

- Broad support for third party applications
- Only platform to support 7 systems architectures, built with AutoBuild(TM)

# SUSE LINUX Build Process and Common Code Base

# About SUSE LINUX



Acquired by Novell in January 2004

Delivering Linux distributions since 1993

The undisputed technology leader in 64-bit Linux

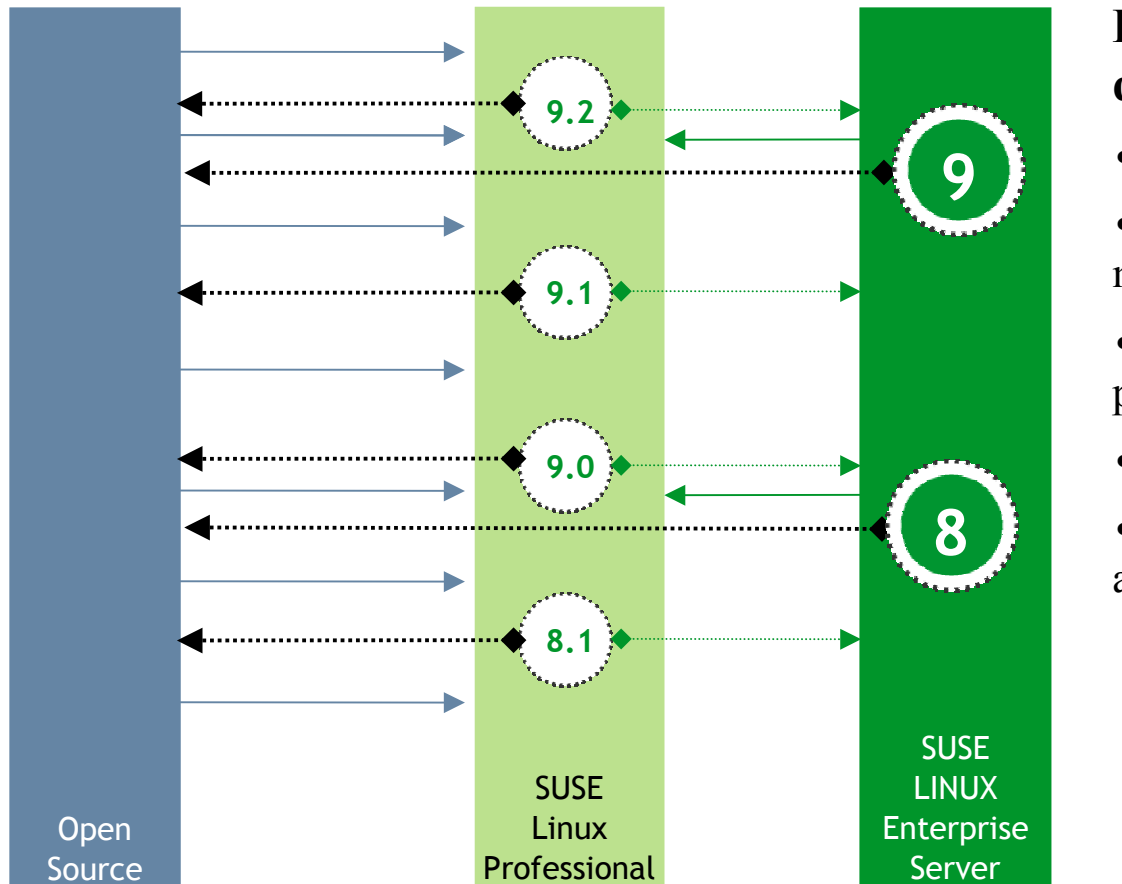
Dominates the non x86 enterprise Linux markets

- More than 50% of the IBM i/pSeries \*
- More than 80% of the Linux for IBM S/390 and IBM zSeries markets \*

\* According to IBM, pSeries, iSeries are now IBM POWER

\*\* According Butler Group study

# SUSE LINUX Enterprise Release Model



## Designed for enterprise deployments

- 5 year support
- Predictable 12-18 month road map
- Uniform ISV/OEM certification process
- Extensive beta testing
- Extensive testing by early adopters and community members
  - SUSE LINUX Professional

# About AutoBuild™

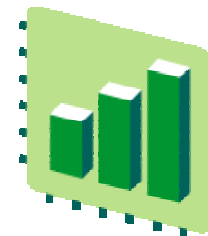


## AutoBuild is unique to Novell

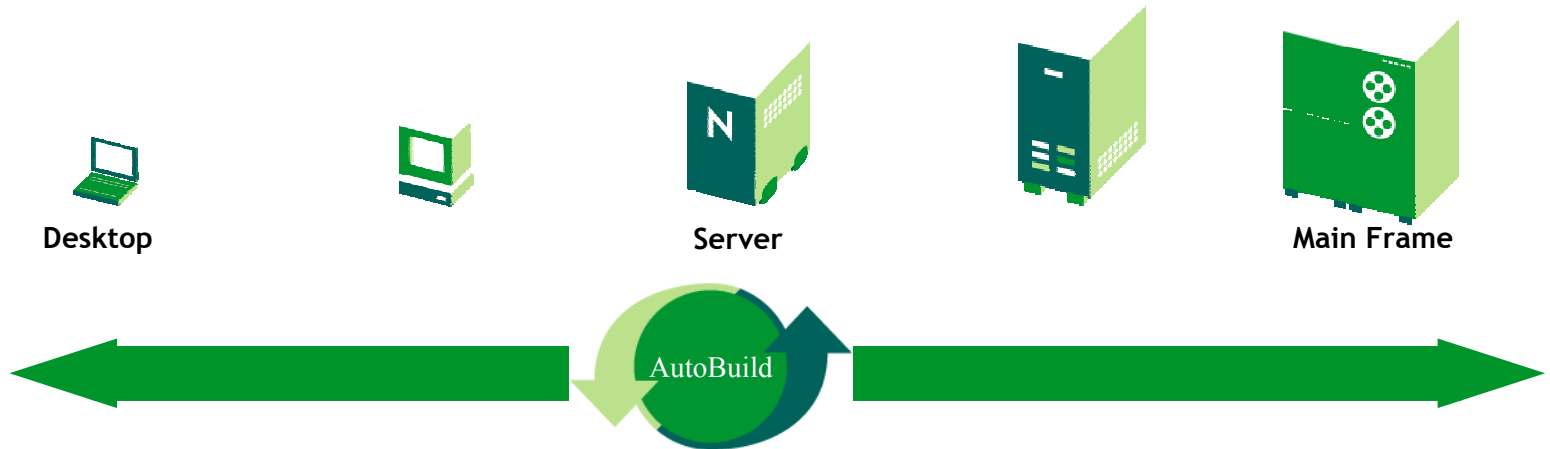
- A system for automating the SUSE LINUX build process from a common code base
- Builds each platform
- Integrates all test suites
- Assures that all SUSE LINUX products work together perfectly

## Why is this important? For the customer it . . .

- Reduces production problems
- Improves operations
- Consolidates skill sets
- Expedites IT solutions



# Benefits of the Common Code Base

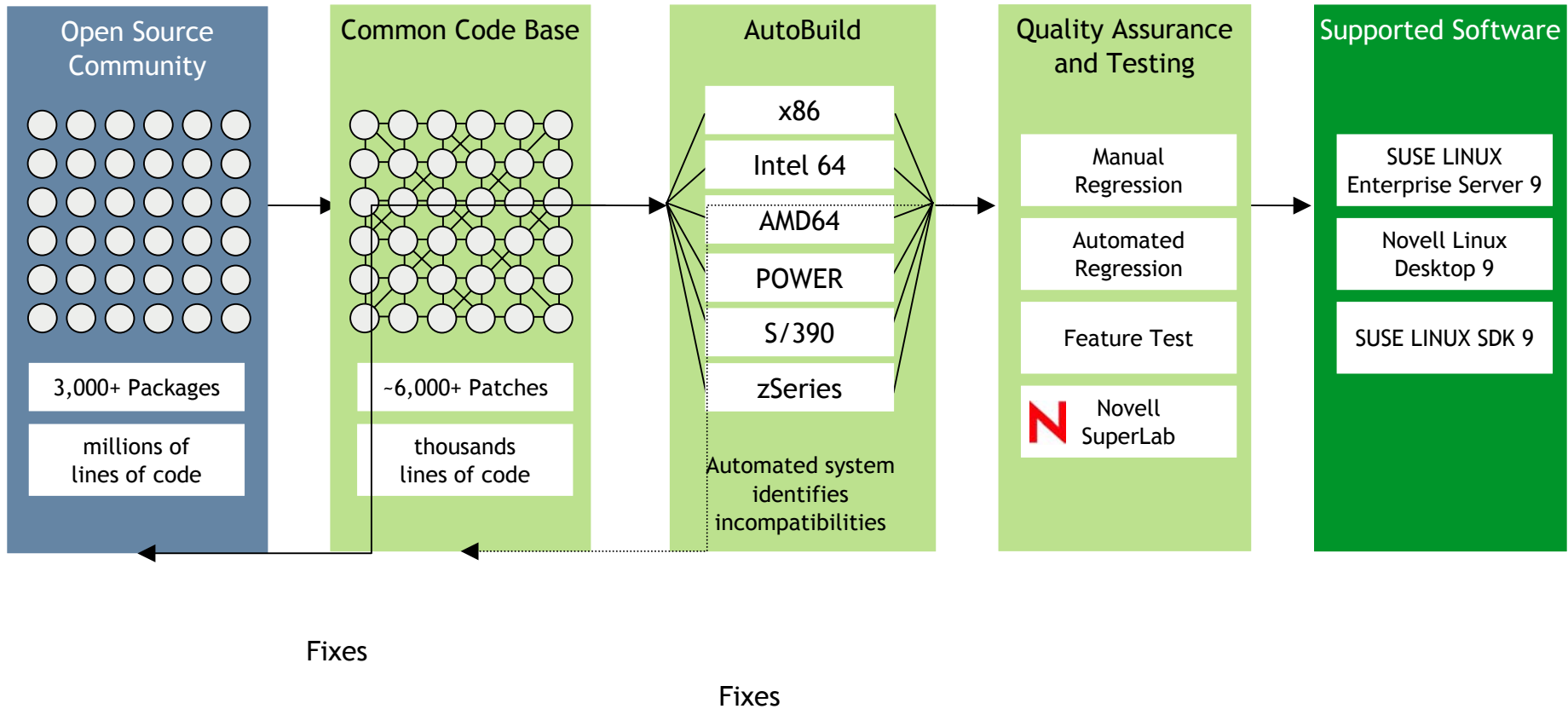


## Supported Platforms

- Intel x86 Pentium, Xeon (32 bit)
- Intel Itanium 2 (64 bit)
- AMD x86 (32 bit)
- AMD64 (32/64 bit)
- Intel EM64T
- IBM POWER
- IBM zSeries and IBM S/390



# SUSE LINUX Development Process



# SUSE LINUX Enterprise Server 9 Overview





# SUSE LINUX Enterprise Server 9 Overview

**A secure, reliable platform for Linux and open-source computing in the enterprise:**

- **Unmatched manageability** lowers the cost of ownership
- **Strongest security capabilities** ensures data privacy
- **Industry leading scalability and reliability** enables mission-critical deployments
- **Robust application support** for third party and line of business applications
- **Backed by Novell** empowering businesses to deploy Linux with confidence



# Industry Leading Performance and Scalability

**Fact:** SUSE LINUX Enterprise Server 9 offers industry-leading performance and scalability capabilities for large-scale Linux deployments



## Features

- Performance
  - Kernel 2.6 performance
  - Flexible and pluggable I/O schedulers
- Scalability
  - NPTL
  - Hyperthreading
  - Non-uniform memory management
  - Infiniband



# Performance

---

## Kernel 2.6 Performance

- SUSE-driven kernel enhancements and patches
- Enhanced scalability features lead to performance gains

## Flexible and pluggable I/O schedulers

- Four available schedulers: CFQ, NOOP, Deadline or Anticipatory schedulers fitting best your needs

## Various I/O Characteristics

- Raw I/O and Async I/O to provide high bandwidth (e.g. for databases)
- Multipath I/O: multiple paths to storage increases data throughput



# Fastest Linux TPC-C Benchmark Performance

## “Oracle Achieves World Record Database Performance using SUSE LINUX Enterprise Server 9”

- Using NEC's Express 5800/1320Xd server with 32 Intel Itanium 2 processors at 1.5 GHz with 6 MB L3 cache running on **Novell's SUSE LINUX Enterprise Server 9**, Oracle Database 10g achieved 683,575 tpmC (transactions per minute) with a price-performance ratio of \$5.99/tpmC.
- TPC-C performance benchmark result for Oracle Database 10g running on Linux-based SMPs.
- <http://www3.sys-con.com/banners/linuxworld336.cfm>

"More and more customers are turning to Linux to support their large-scale enterprises. By showing outstanding Linux database performance on the largest SMPs, Oracle continues to prove that Linux can handle the world's toughest workloads."

- Richard Sarwal, vice president of Server Performance of Oracle Corp.



# Scalability

---

## Native POSIX Thread Library for Linux (NPTL)

- New architecture results in dramatic performance gain across all platforms

Hyperthreading support improved for throughput of current x86 hardware

## NUMA (non-uniform memory management)

- Allows to scale more efficiently for systems with dozens, or hundreds of CPUs
- More effective scalability across large scale implementations



# Scalability

---

## InfiniBand(TM)

- Inter-system connect for greater performance, lower latency, easier and faster sharing of data, built in security and quality of service and improved usability

## Large-scale user and file support

- Number of unique users and groups has been expanded from 65k to over 4 billion in the kernel
- Number of Process IDs has been increased from 32k to 65k in userland, while kernel supports 1 billion

# Reliability, High Availability and Fail-Over

**Fact:** SUSE LINUX Enterprise Server 9 is reliable and provides multi-server clustering capabilities



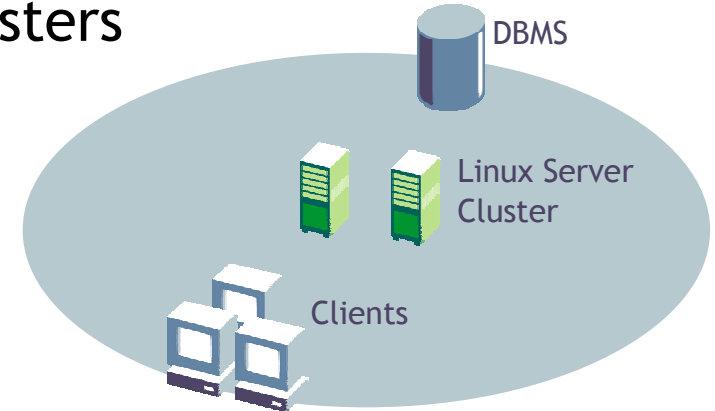
## Features

- Multi-server clustering
- Hotplug services
- Support for latest reliable hardware
- Data Center Linux
- Carrier Grade Linux

# High Availability Features

## Fail-over and load balancing clusters

- Heartbeat infrastructure
- Hotplug services
- Automated fail-over
- Cluster IP Alias
- Linux Virtual Server
- Multipath I/O
- *Distributed Replicated Block Device (DRBD)*
- Enterprise Volume Manager (EVMS)



## Database clusters

- Certified base for IBM DB2 ICE (Integrated Cluster Environment)
- Certified base for Oracle Cluster Filesystem (OCF)





# High Performance File System Support

---

## ReiserFS

- SUSE is a primary contributor
- Extensive file I/O performance gain over other distros

## ext2/3

- Popular file system on Linux

## JFS and XFS

- 64-bit, for large files and partitions

## Clustered file system (Lustre)

- Optimized for network storage and high performance computing (HPC) environments



# Data Center Linux

---

SUSE LINUX, the first Enterprise Linux OS to market with Carrier Grade Linux

- [http://www.osdl.org/lab\\_activities/carrier\\_grade\\_linux/](http://www.osdl.org/lab_activities/carrier_grade_linux/)
- *Industry standard developed in cooperation with telecom carriers*
- *Features benefit all enterprises*

Many Requirements in common with “Data Center Linux”

- Reliability, availability, serviceability (RAS) features
  - Crash dump and fast reboot
  - Console access over the network
- Clustered volume management
  - Intuitive administration console for EVMS

# Linux Manageability

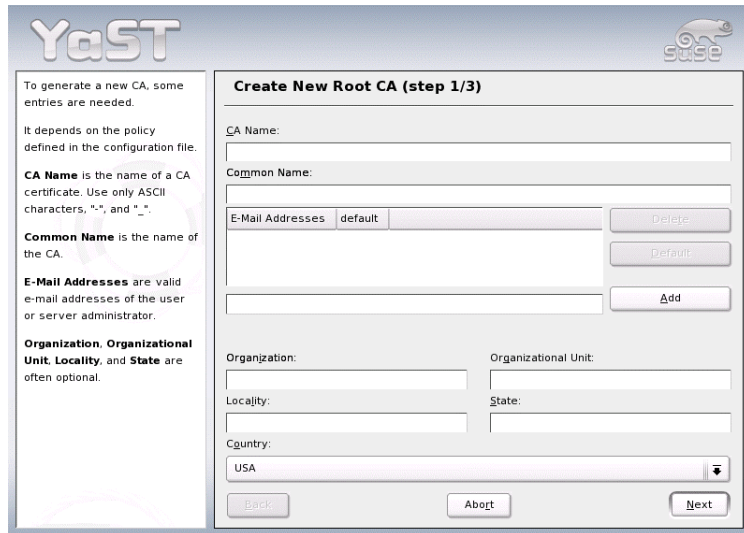
**Fact:** SUSE LINUX Enterprise Server 9 offers the industry's most comprehensive installation, updating, and monitoring services



## Features

- YaST
- AutoYaST
- YOU
- SLP
- LDAP Support
- CIM Support
- ZENworks Linux Management

# Unmatched Manageability via YaST



**YaST**

To generate a new CA, some entries are needed.

It depends on the policy defined in the configuration file.

**CA Name** is the name of a CA certificate. Use only ASCII characters, "-", and ".".

**Common Name** is the name of the CA.

**E-Mail Addresses** are valid e-mail addresses of the user or server administrator.

**Organization, Organizational Unit, Locality, and State** are often optional.

**Create New Root CA (step 1/3)**

CA Name:

Common Name:

E-Mail Addresses: default

Organization:  Organizational Unit:

Locality:  State:

Country:

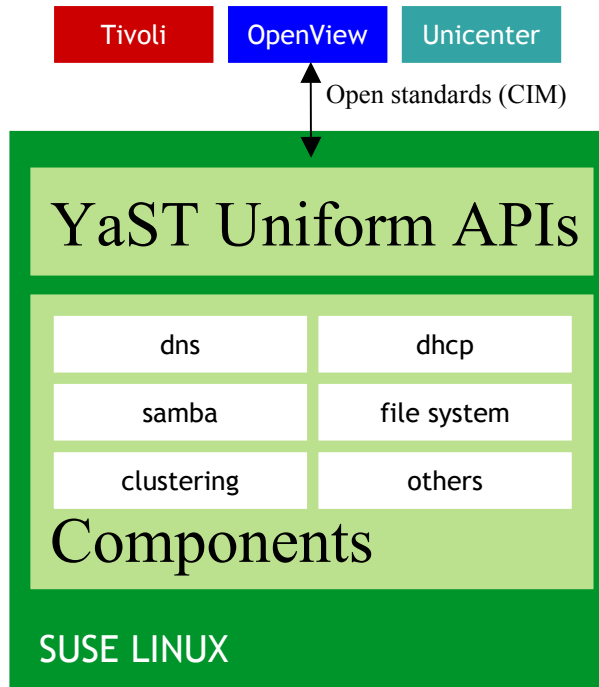
YaST makes it easy to deploy, manage, secure and update Linux

- YaST for configuration of the OS
- YaST for configuration of services (e.g., Mail-, File&Print Server)
- SLP (service location protocol) for automated client configuration
- YaST Online Update (YOU) for software updates
- AutoYaST for zero-administration deployment
- Open APIs
- CIM Enabled

# Common Information Model (CIM) Support

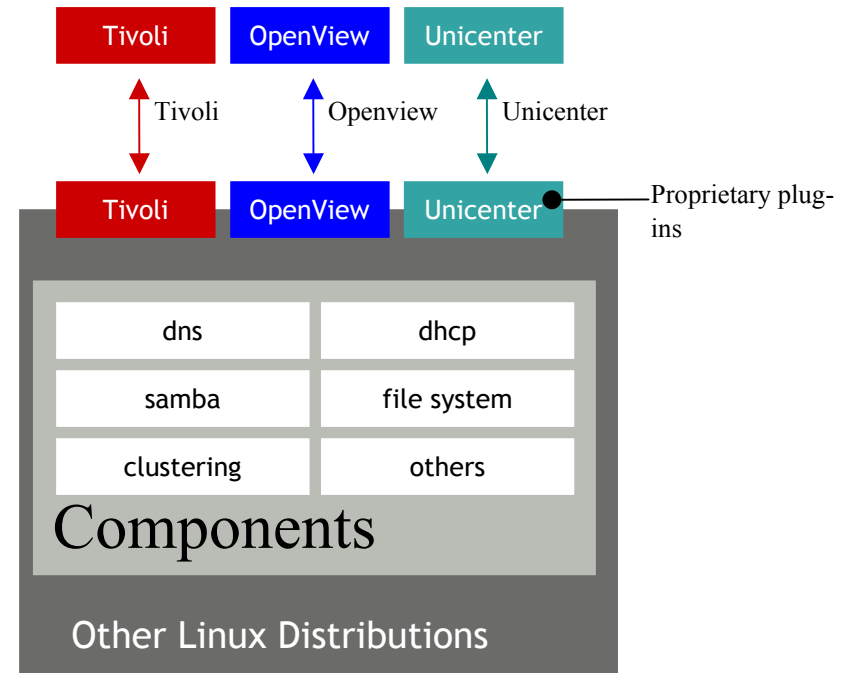
## SUSE LINUX Enterprise Server

- Compatible with any CIM system
- Flexible architecture
- Eases IT change



## Other Linux Distributions

- Proprietary solutions
- Brittle architecture
- Implementation-specific APIs





# Automatic Deployment with AutoYaST

---

## “No Touch” Linux deployment

- Works without user or IT intervention
- Supports configuration deployment on any hardware configuration

## Configuration-driven automation

- Hardware configurations
- Software configurations
- Custom settings

## Supports directory stored settings



# Advanced Management Features

## Enterprise Volume Management System (EVMS)

- Cross-node storage management
- Supports resizing and alteration at runtime

## Class-based kernel resource management (CKRM)

- Mainframe-like resource allocation and management
- Co-developed with IBM

## SLP - Service Location Protocol

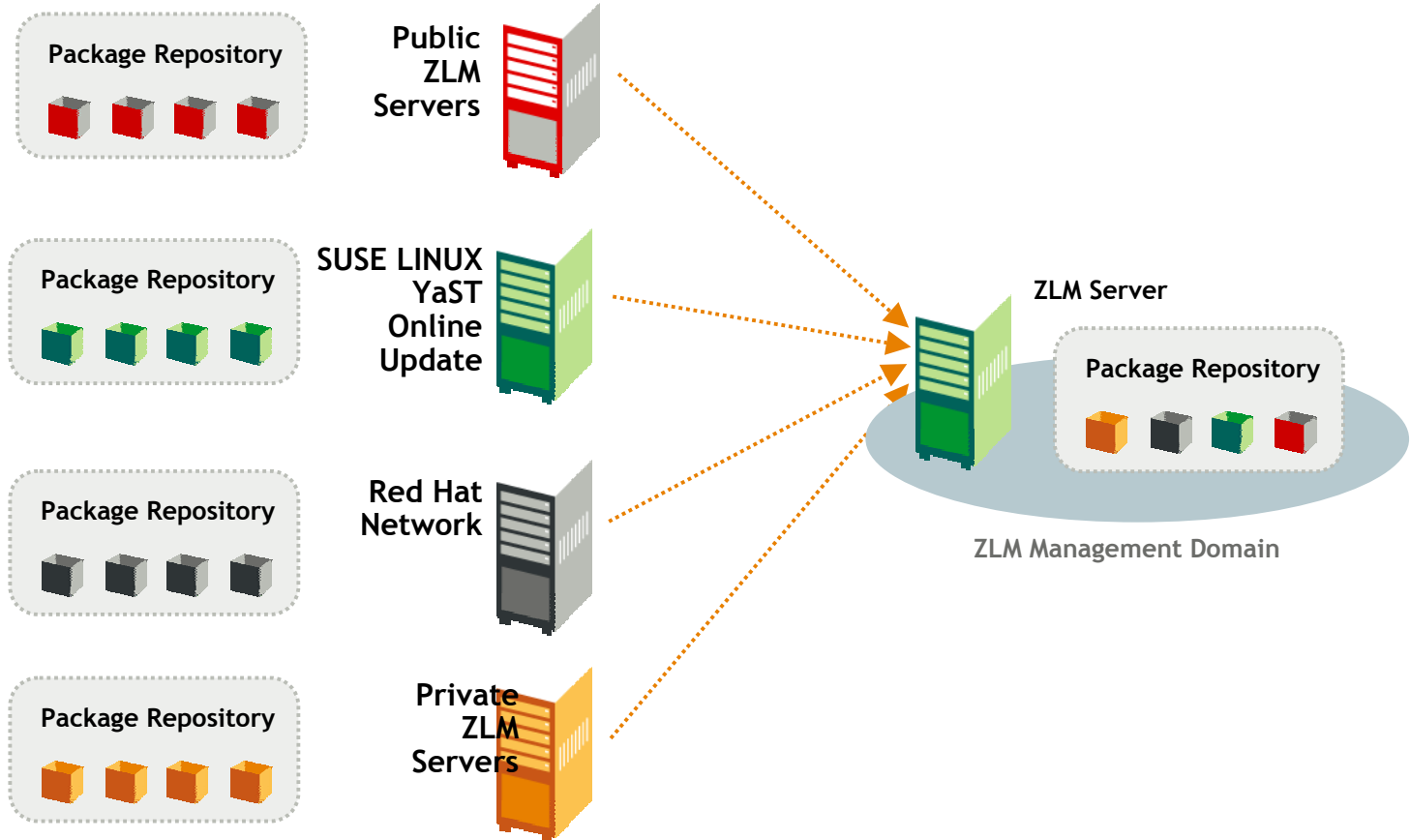
- Client and server interact automatically to set configuration data

## Simple Network Management Protocol (SNMP)

- Centralize management of network workstation and servers, routers, bridges
- Widely accepted standard

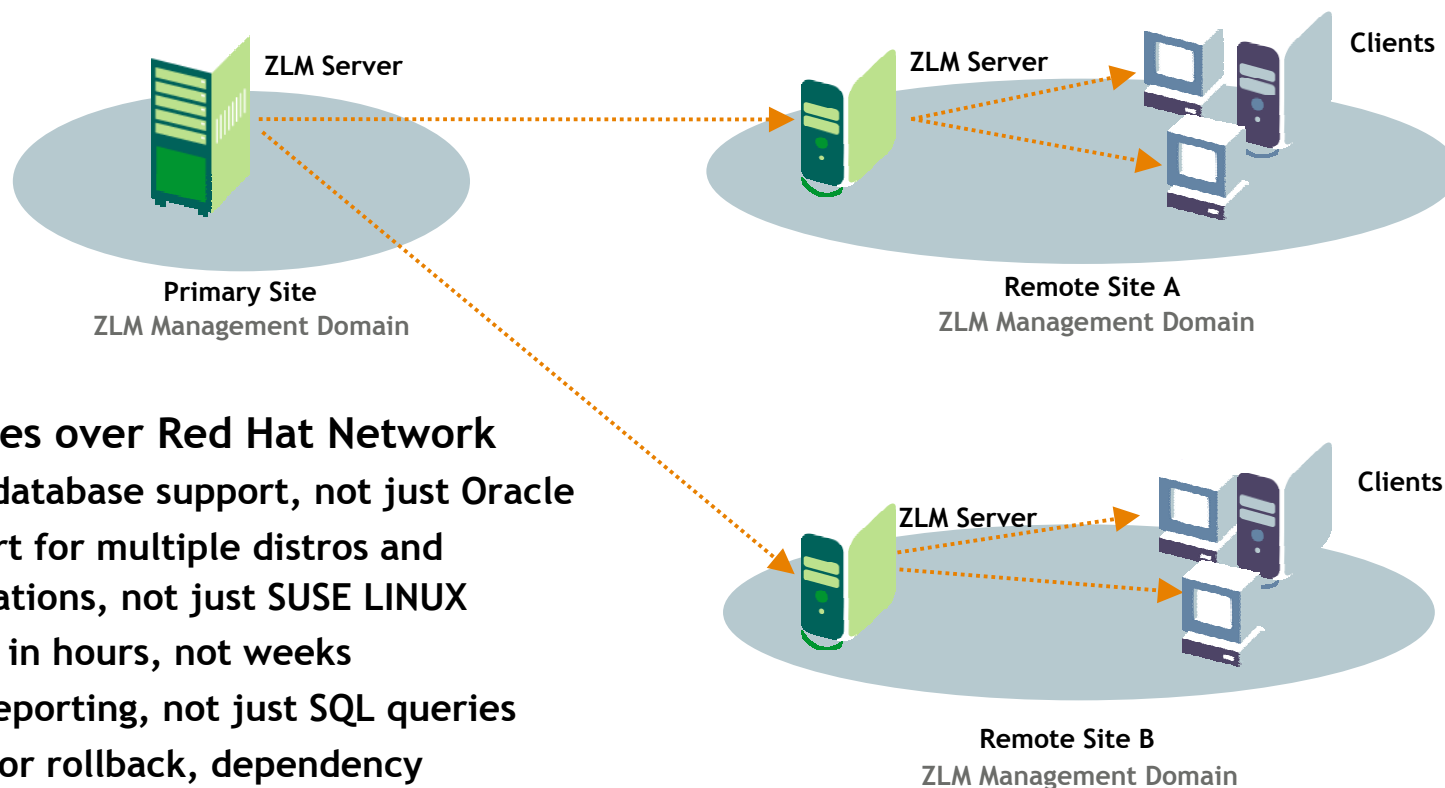
## ZENworks Linux Management (ZLM) enabled

# Using ZLM to Aggregate Updates





# Using ZLM to Distribute System Updates



## Advantages over Red Hat Network

- Open database support, not just Oracle
- Support for multiple distros and applications, not just SUSE LINUX
- Set up in hours, not weeks
- Easy reporting, not just SQL queries
- Superior rollback, dependency resolution and user interface
- ZENworks suite works on other platforms

# Unmatched Security Support

**Fact:** SUSE LINUX Enterprise Server received the highest level of security and operations certification ever reached in the Linux market, Common Criteria Evaluation Assurance Level (EAL) 3+



## Features

- Virtual Private Networking
- EAL certification
- Certificate Management
- Support for Encrypted File System
- Secure Network connections

# Unmatched Security Capabilities



Virtual Private Networking

Rich Access control lists (ACL)

Secure network connections with 128-Bit SSL, IPsec, Secure Shell, Kerberos 5 authentication, etc.

Robust certificate management

Built-in monitoring

- File manipulation monitoring
- Intruder detection
- Linux Audit System (LAUS)

Support for encrypted file system

SUSE LINUX Firewall and Proxy Suite

- configuration frontend for security related rules and NAT (Network Address Translation)

# EAL Certification

SUSE LINUX Enterprise Server 8 is the first EAL3+ certified Linux platform

- EAL3+ is an internationally accepted security certification standard important for security sensitive markets (e.g. government, finance sector)

“Evaluation Assurance Level” is documented by “Common Criteria” ISO standard (ISO 15408)

- Audit subsystem for SLES
- security evaluated development processes

SLES 9 meets all of the requirements for EAL4+

- Certification on track



**Common Criteria**

### **Benefits to Customers**

- Backing of independent, objective certification body
- Worldwide acceptance by 14 nations
- Easy comparison and measurement of functionality and procedure background
- Linux buyer's job insurance

# Robust Application Support

**Fact:** SUSE LINUX Enterprise Server includes core open source functionality, support for 3<sup>rd</sup> party applications and tools for delivering applications on Linux



## Features

- Built-in application services
- Third party application support
- Rich SDK offering
- User Mode Linux support

# Built-In Application Services



## File and print services

- samba 3, NFS, CUPS
- supporting Linux, UNIX, Windows and Macintosh clients



## E-Mail Services

- Postfix, IMAP, etc.



## Databases

- MySQL
- PostgreSQL



## Middleware services

- Apache Web Server and PHP Support
- Java, Tomcat, JBoss



## Network services

- DNS
- DHCP
- OpenLDAP
- NTP
- SLP
- *Ipv4, Ipv6*
- *SNMP*
- *Proxy*
- *FTP*
- *PXE*
- Installserver
- Bootserver
- Updateserver

# Third Party Software and Hardware Support

## Application Support



## Hardware Support





# Developer APIs and Tools

## Runtime Application Support

Perl

Java

Python

Shell Scripting

TCL/TK

Ruby

C# (Mono)

**Compatibility for  
SUSE LINUX Enterprise Server 8**

## SUSE LINUX SDK

Comprehensive APIs

Open tools support

ISV enablement

YaST module development and  
development tools

Eclipse and Kdevelop

Mono

Integrated into the  
Novell Software Evaluation and  
Development Library





# User Mode Linux

---

- Self hosting environment run SLES9 as user space application with full debug capabilities
- Easy cloning of instances by copying predefined images
- Test interaction of several instances and applications on one machine
- UML instance is manageable as the hosting SLES instance



# Standards Support

---

## Linux Standards Base

- Ensures compatibility between Linux distributions
- 1.3 compliant, 2.0 prepared/candidate
- <http://www.linuxbase.org/>

## Carrier Grade Linux

- Priority 1 features
- [http://www.osdl.org/lab\\_activities/carrier\\_grade\\_linux/](http://www.osdl.org/lab_activities/carrier_grade_linux/)

## Data Center Linux

- Many priority 1 features
- [http://www.osdl.org/lab\\_activities/data\\_center\\_linux/](http://www.osdl.org/lab_activities/data_center_linux/)

## Accessibility

- Section 508 - <http://novell.com/accessibility>

## Evaluation Assurance Level (EAL) Common criteria

- Highest security level for Linux



# Standards Support

---

## Linux Standards Base

- Ensures compatibility between Linux distributions
- 1.3 compliant, 2.0 prepared/candidate
- <http://www.linuxbase.org/>

## Carrier Grade Linux

- Priority 1 features
- [http://www.osdl.org/lab\\_activities/carrier\\_grade\\_linux/](http://www.osdl.org/lab_activities/carrier_grade_linux/)

## Data Center Linux

- Many priority 1 features
- [http://www.osdl.org/lab\\_activities/data\\_center\\_linux/](http://www.osdl.org/lab_activities/data_center_linux/)

## Accessibility

- Section 508 - <http://novell.com/accessibility>

## Evaluation Assurance Level (EAL) Common criteria

- Highest security level for Linux

# Backed by Novell

---



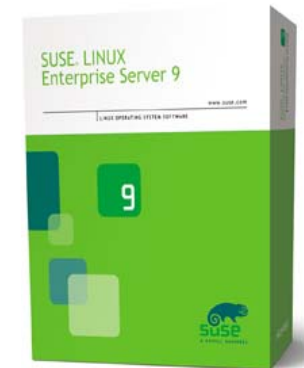
**Fact:** SUSE LINUX Enterprise Server is backed by the largest support ecosystem, Novell's unique indemnification program and Novell's unmatched commitment to Linux and open source.



# SUSE LINUX Enterprise Server 9 Overview

**A secure, reliable platform for Linux and open-source computing in the enterprise:**

- **Unmatched manageability** lowers the cost of ownership
- **Strongest security capabilities** ensures data privacy
- **Industry leading scalability and reliability** enables mission-critical deployments
- **Robust application support** for third party and line of business applications
- **Backed by Novell** empowering businesses to deploy Linux with confidence



# Demo Screenshots

---



**Novell.**

## Base Installation

- ✓ Language
- ➔ Installation Settings
- Perform Installation

## Configuration

- Root Password
- Network
- Online Update
- Service
- Users
- Clean Up
- Release Notes
- Device Configuration



### Installation Settings

Click any headline to make changes or use the "Change..." menu below

**System**

- Processor: Pentium III (Katmai)
- Main Memory: 256 MB

**Mode**

- **New installation**

**Keyboard layout**

- English (US)

**Mouse**

- IntelliMouse Explorer (ps2)

**Partitioning**

Installing SUSE LINUX Enterprise Server is easy - often in just 3 mouse clicks!

**Base Installation**

- ✓ Language
- ✓ Installation Settings
- ✓ Perform Installation

**Configuration**

- ✓ Root Password
- ✓ Network
- ✓ Online Update
- ✓ Service
- ✓ Users
- ✓ Clean Up
- ✓ Release Notes
- ➔ Device Configuration

**Hardware Configuration**

- Skip Configuration
- Use Following Configuration

**Graphics Cards**

- NVidia RIVA TNT2 ( nv ) Connected to Monitor:  
BELINEA 105035 [ 1024x768@16 bit ]
- 3D Acceleration: Disabled

**Printers**

- Listen to remote CUPS servers to get comfortable access to remote queues.

**Sound**

- Creative Sound Blaster AudioPCI64V, AudioPCI128

SUSE LINUX Enterprise Server 9 is easy to setup and easy to use. The YaST installer guides systems administrators through the process of configuring the system and installing the software. Installing SUSE LINUX Enterprise Server 9 can also



### Expert Global Settings Configuration

Here, you can fine-tune the global options of the server.

Use **Add** to add a new configuration option, **Edit** to modify already existing option, and **Delete** to delete an option.

### Expert Global Settings Configuration

Option	Value
add machine script	/usr/sbin/useradd -c Machine -d /var/lib/nobody -s /bin/false %m\$
domain logons	true
domain master	Yes
encrypt passwords	yes
idmap gid	10000-20000
idmap uid	10000-20000
interfaces	127.0.0.1 10.10.0.0/16
ldap suffix	dc=example,dc=com
load printers	Yes
local master	true
log level	3
os level	65
preferred master	Yes
printcap cache time	10
printcap name	cups
printing	cups
security	user
server string	Samba Server

YaST provides an intuitive management console and uniform API for configuring virtually any OS component or service, such as samba, apache or even clustering.

# YaST



Software



Hardware



System



Network Devices



Network Services



Security and Users



Misc



Online Update



Change Source of  
Installation



Patch CD Update



UML Installation



Install and Remove  
Software



Installation into Directory



System Update



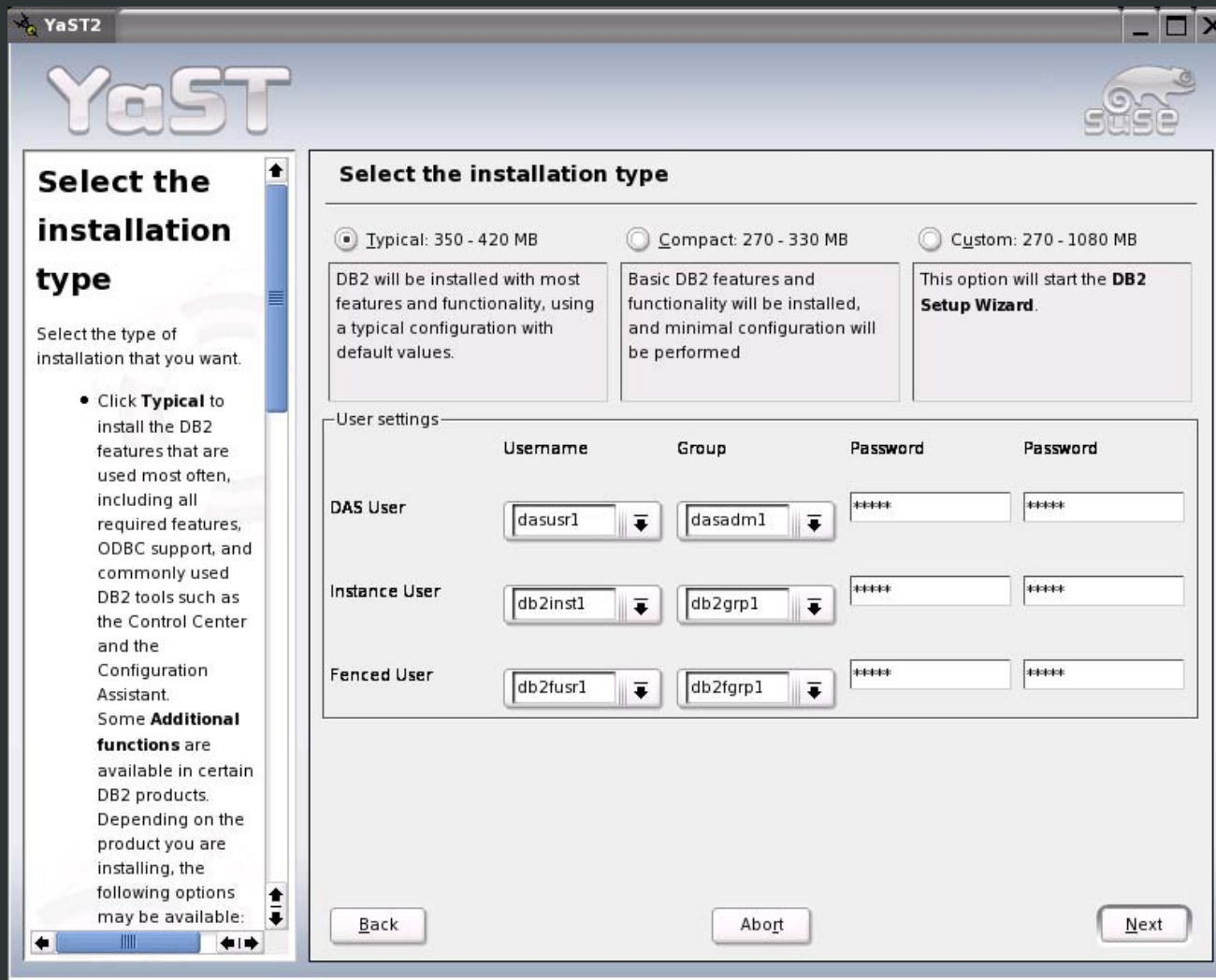
YOU Server  
Configuration

Help

Search

Close

Getting access to the latest system updates can be performed on an individual system using YaST Online Update (YOU) or in a managed fashion using Novell ZENworks Linux Management.



ISVs applications, such as IBM DB2, can be managed using YaST.

## General Disclaimer

This document is not to be construed as a promise by any participating company to develop, deliver, or market a product. Novell, Inc., makes no representations or warranties with respect to the contents of this document, and specifically disclaims any express or implied warranties of merchantability or fitness for any particular purpose. Further, Novell, Inc., reserves the right to revise this document and to make changes to its content, at any time, without obligation to notify any person or entity of such revisions or changes. All Novell marks referenced in this presentation are trademarks or registered trademarks of Novell, Inc. in the United States and other countries. All third-party trademarks are the property of their respective owners.

No part of this work may be practiced, performed, copied, distributed, revised, modified, translated, abridged, condensed, expanded, collected, or adapted without the prior written consent of Novell, Inc. Any use or exploitation of this work without authorization could subject the perpetrator to criminal and civil liability.



**Novell.**