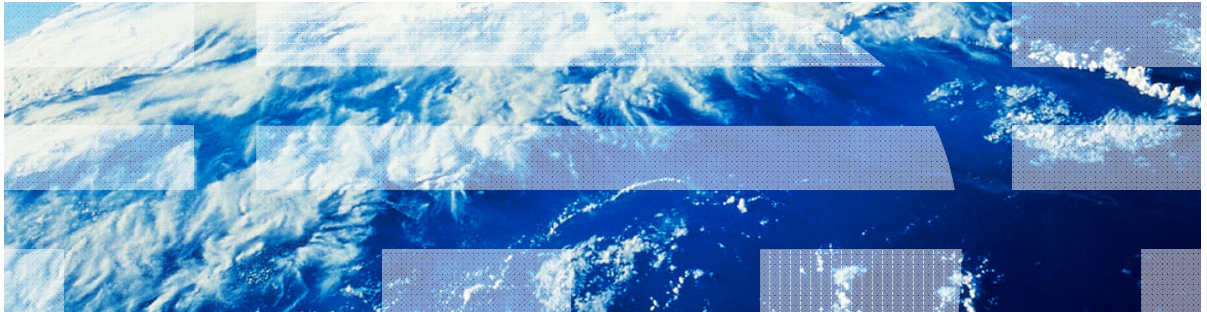


IBM Worklight V5.0.5

Getting Started

Module 2.4 – Setting Up Your Windows Phone 7 Development Environment



Trademarks

- IBM, the IBM logo, and [ibm.com](http://www.ibm.com) are trademarks or registered trademarks of International Business Machines Corporation, registered in many jurisdictions worldwide. Worklight is a trademark or registered trademark of Worklight, an IBM Company. Other product and service names might be trademarks of IBM or other companies. A current list of IBM trademarks is available on the Web at “[Copyright and trademark information](http://www.ibm.com/legal/copytrade.shtml)” at www.ibm.com/legal/copytrade.shtml.
- Microsoft, Windows, Windows NT, and the Windows logo are trademarks of Microsoft Corporation in the United States, other countries, or both.
- Other company products or service names may be trademarks or service marks of others.
- This document may not be reproduced in whole or in part without the prior written permission of IBM.

About IBM®

- See <http://www.ibm.com/ibm/us/en/>

Agenda

- Installing Microsoft Visual Studio for Windows Phone 7
- Installing Zune software
- Publishing your Windows Phone 7 applications

Installing MS Visual Studio for Windows Phone 7

- Microsoft Visual Studio is an IDE that you can use to develop applications for the Windows Phone 7 platform.
- To download Visual Studio for Windows Phone 7, go to the Microsoft Visual Studio for Windows Phone 7 website at:
<http://www.microsoft.com/visualstudio/en-us/products/2010-editions/windows-phone-developer-tools>

- Click **Install Now**.
- Run the downloaded file.

Microsoft Visual Studio

Microsoft Visual Studio on MSDN United States (English) Translate this page Search

PRODUCTS STRATEGIES SCENARIOS PARTNERS TRY VISUAL STUDIO BUY VISUAL STUDIO

VISUAL STUDIO 2010 EXPRESS FOR WINDOWS PHONE

Included with Windows Phone SDK 7.1, which provides free tools for developers building apps for Windows Phone using .NET, Silverlight and XNA.

INSTALL NOW - ENGLISH

See below to download Windows Phone SDK 7.1 in a concrete language.

Windows Phone
Put people first.

Download the tools.
Build awesome apps.

Windows Phone SDK 7.1
Select language...

INSTALL NOW

OVERVIEW

SYSTEM REQUIREMENTS

RESOURCES

DISCOVER VISUAL STUDIO 2010 EXPRESS FOR WINDOWS PHONE

Whether you're familiar with, or new to, Silverlight and XNA Game Studio programming, Windows Phone SDK 7.1 provides the tools necessary to target Windows Phone users using either Windows Phone 7 or 7.5 devices and includes productivity enhancements such as an app profiler and an improved emulator. It also includes Microsoft Advertising SDK for Windows Phone.

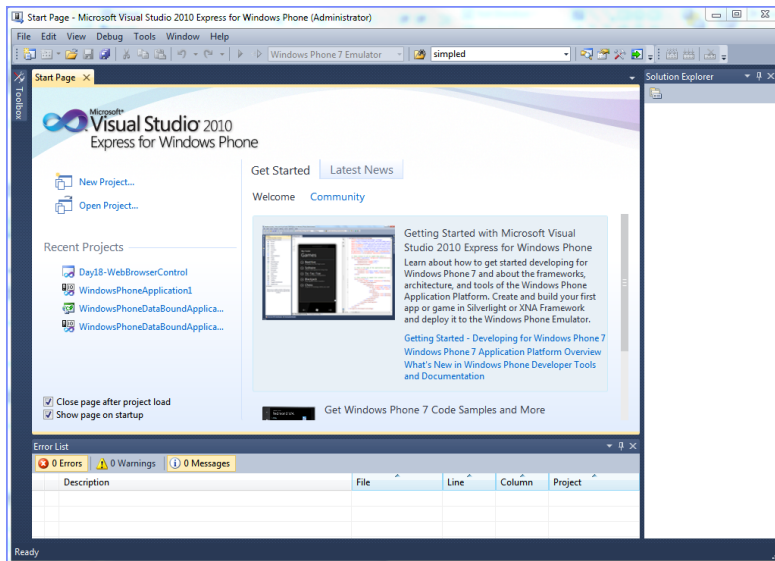
Installing MS Visual Studio for Windows Phone 7

- Click **Install Now** to start the installation process.
 - The installation process downloads the required components from the Internet.
- Wait for the installation to complete.



Installing MS Visual Studio for Windows Phone 7

- After the installation completes, you can use Visual Studio to open native projects that you generate with Worklight®.



Agenda

- Installing Microsoft Visual Studio for Windows Phone 7
- Installing Zune software
- Publishing your Windows Phone 7 applications

Installing Zune Software

- You must download and install Zune software on your development environment to run your applications on a Windows Phone 7 handset.
- You can obtain Zune software at <http://www.zune.net/en-US/products/software/download/default.htm>
- Minimum requirement for Zune is Windows XP SP3 and higher.
- After Zune software is installed, you can connect your Windows Phone 7 handset to your computer.
- **Note:** You cannot deploy and run an application on a device that is in sleep mode.

Agenda

- Installing Microsoft Visual Studio for Windows Phone 7
- Installing Zune software
- Publishing your Windows Phone 7 applications

Publishing Your Windows Phone Applications

- You must be a registered Windows Phone Developer to submit your applications to the Windows Phone Marketplace.
- Registration can be done at Microsoft App Hub at <http://create.msdn.com/en-US/>
- After you have registered, you must assemble the prerequisites for your application certification by Microsoft and submit your application for review.
- For more information about Windows Phone Marketplace application deployment, see the Microsoft MSDN Library website (search for *Windows Phone Marketplace*).

Notices

- Permission for the use of these publications is granted subject to these terms and conditions.
- This information was developed for products and services offered in the U.S.A.
- IBM may not offer the products, services, or features discussed in this document in other countries. Consult your local IBM representative for information on the products and services currently available in your area. Any reference to an IBM product, program, or service is not intended to state or imply that only that IBM product, program, or service may be used. Any functionally equivalent product, program, or service that does not infringe any IBM intellectual property right may be used instead. However, it is the user's responsibility to evaluate and verify the operation of any non-IBM product, program, or service.
- IBM may have patents or pending patent applications covering subject matter described in this document. The furnishing of this document does not grant you any license to these patents. You can send license inquiries, in writing, to:
 - IBM Director of Licensing
IBM Corporation
North Castle Drive
Armonk, NY 10504-1785
U.S.A.
- For license inquiries regarding double-byte character set (DBCS) information, contact the IBM Intellectual Property Department in your country or send inquiries, in writing, to:
 - Intellectual Property Licensing
Legal and Intellectual Property Law
IBM Japan Ltd.
1623-14, Shimotsuruma, Yamato-shi
Kanagawa 242-8502 Japan
- **The following paragraph does not apply to the United Kingdom or any other country where such provisions are inconsistent with local law:**
INTERNATIONAL BUSINESS MACHINES CORPORATION PROVIDES THIS PUBLICATION "AS IS" WITHOUT WARRANTY OF ANY KIND, EITHER EXPRESS OR IMPLIED, INCLUDING, BUT NOT LIMITED TO, THE IMPLIED WARRANTIES OF NON-INFRINGEMENT, MERCHANTABILITY OR FITNESS FOR A PARTICULAR PURPOSE. Some states do not allow disclaimer of express or implied warranties in certain transactions, therefore, this statement may not apply to you.
- This information could include technical inaccuracies or typographical errors. Changes are periodically made to the information herein; these changes will be incorporated in new editions of the publication. IBM may make improvements and/or changes in the product(s) and/or the program(s) described in this publication at any time without notice.
- Any references in this information to non-IBM Web sites are provided for convenience only and do not in any manner serve as an endorsement of those Web sites. The materials at those Web sites are not part of the materials for this IBM product and use of those Web sites is at your own risk.
- IBM may use or distribute any of the information you supply in any way it believes appropriate without incurring any obligation to you.
- Licensees of this program who wish to have information about it for the purpose of enabling: (i) the exchange of information between independently created programs and other programs (including this one) and (ii) the mutual use of the information which has been exchanged, should contact:
 - IBM Corporation
Dept F6, Bldg 1
294 Route 100
Somers NY 10589-3216
USA
- Such information may be available, subject to appropriate terms and conditions, including in some cases, payment of a fee.
- The licensed program described in this document and all licensed material available for it are provided by IBM under terms of the IBM Customer Agreement, IBM International Program License Agreement or any equivalent agreement between us.
- Information concerning non-IBM products was obtained from the suppliers of those products, their published announcements or other publicly available sources. IBM has not tested those products and cannot confirm the accuracy of performance, compatibility or any other claims related to non-IBM products. Questions on the capabilities of non-IBM products should be addressed to the suppliers of those products.

COPYRIGHT LICENSE:

- This information contains sample application programs in source language, which illustrate programming techniques on various operating platforms. You may copy, modify, and distribute these sample programs in any form without payment to IBM, for the purposes of developing, using, marketing or distributing application programs conforming to the application programming interface for the operating platform for which the sample programs are written. These examples have not been thoroughly tested under all conditions. IBM, therefore, cannot guarantee or imply reliability, serviceability, or function of these programs.
- Each copy or any portion of these sample programs or any derivative work, must include a copyright notice as follows:
© (your company name) (year). Portions of this code are derived from IBM Corp. Sample Programs. © Copyright IBM Corp. _enter the year or years_. All rights reserved.

Support and comments

- For the entire IBM Worklight documentation set, training material and online forums where you can post questions, see the IBM website at:
 - <http://www.ibm.com/mobile-docs>
- **Support**
 - Software Subscription and Support (also referred to as Software Maintenance) is included with licenses purchased through Passport Advantage and Passport Advantage Express. For additional information about the International Passport Advantage Agreement and the IBM International Passport Advantage Express Agreement, visit the Passport Advantage website at:
 - <http://www.ibm.com/software/passportadvantage>
 - If you have a Software Subscription and Support in effect, IBM provides you assistance for your routine, short duration installation and usage (how-to) questions, and code-related questions. For additional details, consult your IBM Software Support Handbook at:
 - <http://www.ibm.com/support/handbook>
- **Comments**
 - We appreciate your comments about this publication. Please comment on specific errors or omissions, accuracy, organization, subject matter, or completeness of this document. The comments you send should pertain to only the information in this manual or product and the way in which the information is presented.
 - For technical questions and information about products and prices, please contact your IBM branch office, your IBM business partner, or your authorized remarketer.
 - When you send comments to IBM, you grant IBM a nonexclusive right to use or distribute your comments in any way it believes appropriate without incurring any obligation to you. IBM or any other organizations will only use the personal information that you supply to contact you about the issues that you state.
 - Thank you for your support.
 - Submit your comments in the IBM Worklight forums at:
 - <https://www.ibm.com/developerworks/mobile/mobileforum.html>
 - If you would like a response from IBM, please provide the following information:
 - Name
 - Address
 - Company or Organization
 - Phone No.
 - Email address

Thank You

