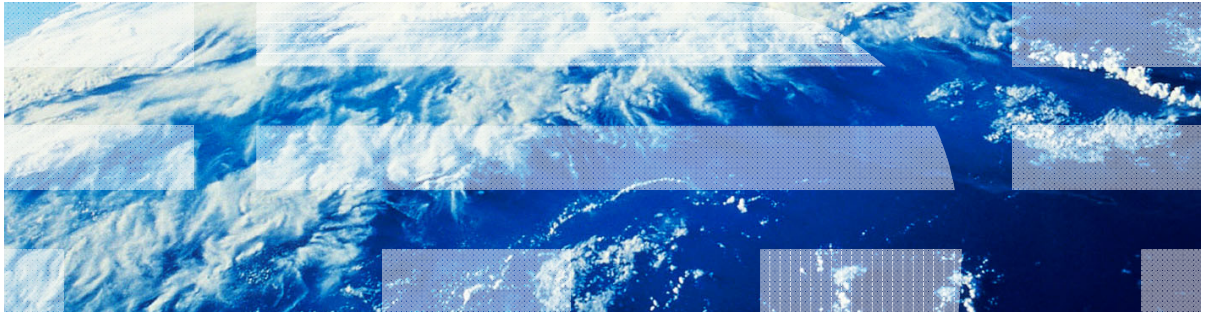


IBM Worklight V5.0.5

Getting Started

Module 3.2 – Previewing your Application in the Android Environment



Trademarks

- IBM, the IBM logo, and ibm.com are trademarks or registered trademarks of International Business Machines Corporation, registered in many jurisdictions worldwide. Worklight is a trademark or registered trademark of Worklight, an IBM Company. Other product and service names might be trademarks of IBM or other companies. A current list of IBM trademarks is available on the Web at “[Copyright and trademark information](http://www.ibm.com/legal/copytrade.shtml)” at www.ibm.com/legal/copytrade.shtml.
- Java and all Java-based trademarks and logos are trademarks or registered trademarks of Oracle and/or its affiliates.
- Other company products or service names may be trademarks or service marks of others.
- This document may not be reproduced in whole or in part without the prior written permission of IBM.

About IBM®

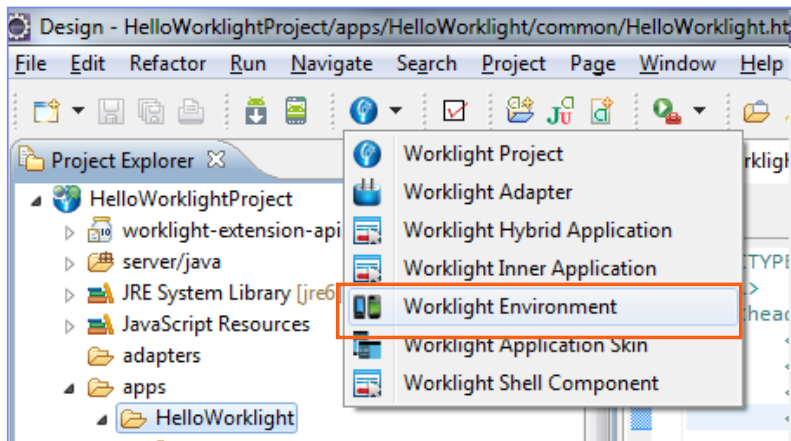
- See <http://www.ibm.com/ibm/us/en/>

Agenda

- Adding an Android environment
- Brief review of the Android environment folder structure
- Previewing your application with the Mobile Browser Simulator
- Running your application on the Android Emulator
- Running your application on a real device

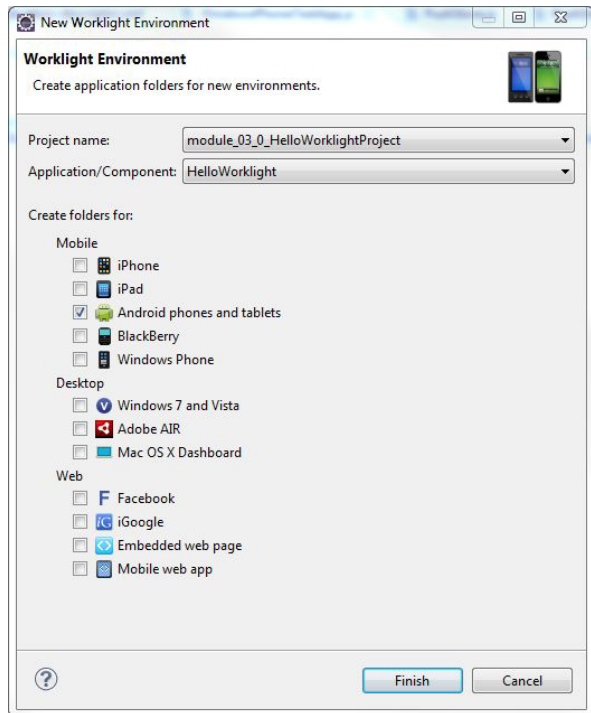
Adding a New Environment

- Click the IBM Worklight® icon and select **Worklight Environment** to add an environment to your application.



Adding a New Environment

- Select the **Android phones and tablets** check box, and then click **Finish**.

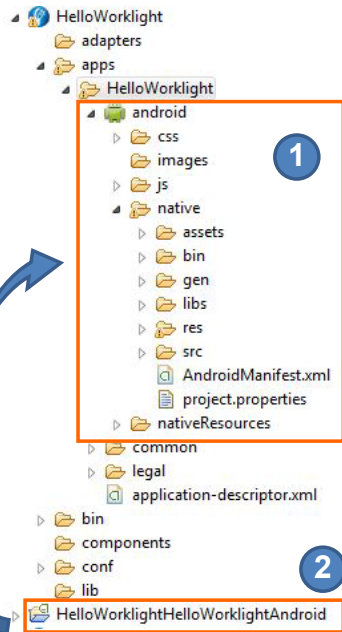


Adding a New Environment

- Two folders are automatically added:
 - (1): The **android** folder inside the application folder.
 - (2): The Android project folder in your workspace.

- IMPORTANT**

The auto-generated Android Project folder does not contain a copy of the code, but it is mapped to a native folder within the android folder of the application.

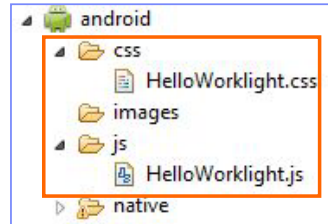


Agenda

- Adding an Android environment
- Brief review of the Android environment folder structure
- Previewing your application with the Mobile Browser Simulator
- Running your application on the Android Emulator
- Running your application on a real device

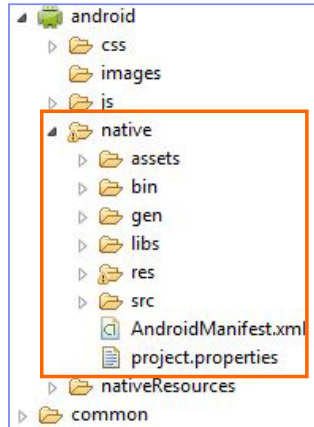
Review of the Android Folder Structure

- The Android environment consists of the following folders:
 - **css** – The properties that are specified in this folder override the CSS files from the **common** folder.
 - **images** – Android-specific images can be added in this folder. If an image with the same file name exists in the **common** folder, it is overwritten in the Android application.
 - **js** – JavaScript that can extend, and override if required, JavaScript code from the **common** folder.



Review of the Android Folder Structure

- The **native** folder under the **android** folder contains automatically generated android application code that is automatically imported into the Eclipse workspace as an Android Project.
- Files in the assets folder are regenerated every time the application is built, so any changes made to these files are lost.

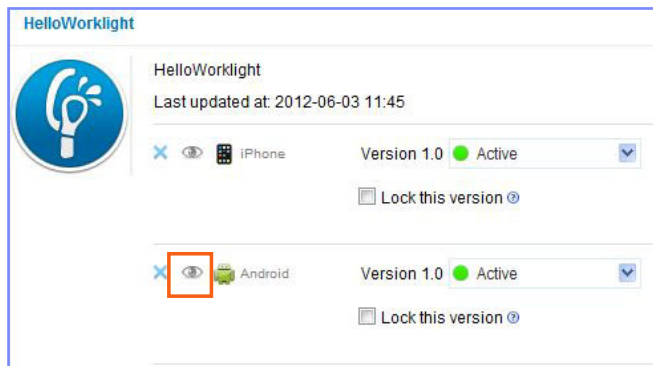


Agenda

- Adding an Android environment
- Brief review of the Android environment folder structure
- **Previewing your application with the Mobile Browser Simulator**
- Running your application on the Android Emulator
- Running your application on a real device

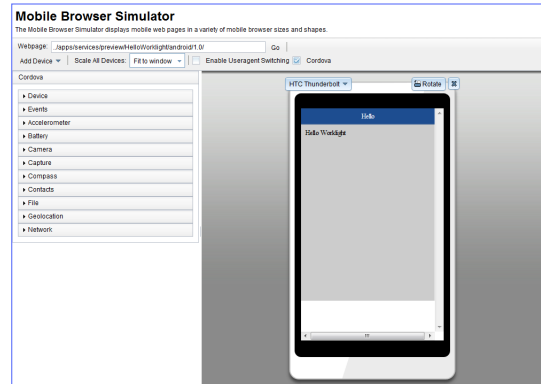
Previewing your application with the Mobile Browser Simulator

- When your application is built and deployed in Worklight Studio, you can preview it in the Mobile Browser Simulator.
- To do so, browse the Worklight Console, and then click the preview icon beside the environment for which you want to preview your app.



Previewing your application with the Mobile Browser Simulator

- The Mobile Browser Simulator can be used to emulate Cordova or preview your application with different device skins.
- *Limitation:* With the Mobile Browser Simulator, to preview an application that contains security tests that rely on the device (such as auto-provisioning or authenticity), you must temporarily change the security tests to not use the device identification.

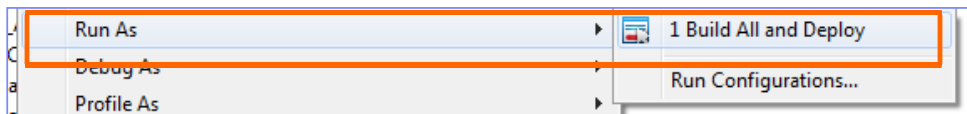


Agenda

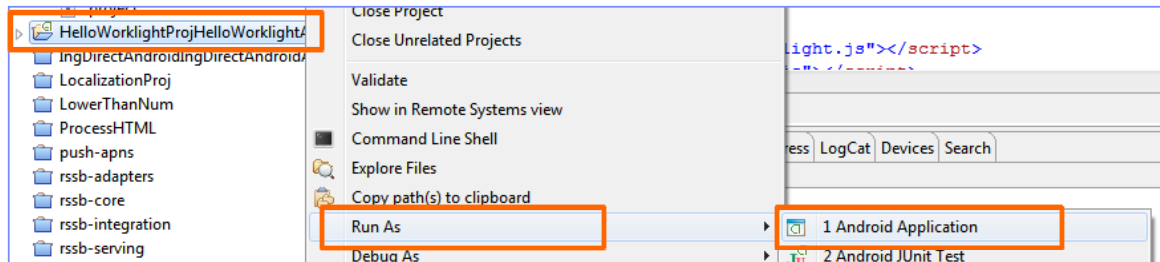
- Adding an Android environment
- Brief review of the Android environment folder structure
- Previewing your application with the Mobile Browser Simulator
- **Running your application on the Android Emulator**
- Running your application on a real device

Running Your App on the Android Emulator

- Build and deploy your application to the Worklight Server.



- Right-click the automatically generated Android Project, and select **Run As > Android Application**.



Running Your App on the Android Emulator

- You created your first Android application.



Agenda

- Adding an Android environment
- Brief review of the Android environment folder structure
- Previewing your application with the Mobile Browser Simulator
- Running your application on the Android Emulator
- Running your application on a real device

Running Your Application On a Real Device

- When an Android device is connected to the computer with a USB cable, the Eclipse ADT plug-in automatically recognizes it and attempts to deploy applications onto it.

- For more information and device drivers, see <http://developer.android.com/sdk/win-usb.html>

Exercise

- Exercise
 - Use the HelloWorklight application that you created earlier.
 - Add an Android environment to it.
 - Build and deploy your application to the Worklight Server.
 - Run the auto-generated Android Application on the emulator.



Notices

- Permission for the use of these publications is granted subject to these terms and conditions.
- This information was developed for products and services offered in the U.S.A.
- IBM may not offer the products, services, or features discussed in this document in other countries. Consult your local IBM representative for information on the products and services currently available in your area. Any reference to an IBM product, program, or service is not intended to state or imply that only that IBM product, program, or service may be used. Any functionally equivalent product, program, or service that does not infringe any IBM intellectual property right may be used instead. However, it is the user's responsibility to evaluate and verify the operation of any non-IBM product, program, or service.
- IBM may have patents or pending patent applications covering subject matter described in this document. The furnishing of this document does not grant you any license to these patents. You can send license inquiries, in writing, to:
 - IBM Director of Licensing
IBM Corporation
North Castle Drive
Armonk, NY 10504-1785
U.S.A.
- For license inquiries regarding double-byte character set (DBCS) information, contact the IBM Intellectual Property Department in your country or send inquiries, in writing, to:
 - Intellectual Property Licensing
Legal and Intellectual Property Law
IBM Japan Ltd.
1623-14, Shimotsuruma, Yamato-shi
Kanagawa 242-8502 Japan
- **The following paragraph does not apply to the United Kingdom or any other country where such provisions are inconsistent with local law:**
INTERNATIONAL BUSINESS MACHINES CORPORATION PROVIDES THIS PUBLICATION "AS IS" WITHOUT WARRANTY OF ANY KIND, EITHER EXPRESS OR IMPLIED, INCLUDING, BUT NOT LIMITED TO, THE IMPLIED WARRANTIES OF NON-INFRINGEMENT, MERCHANTABILITY OR FITNESS FOR A PARTICULAR PURPOSE. Some states do not allow disclaimer of express or implied warranties in certain transactions, therefore, this statement may not apply to you.
- This information could include technical inaccuracies or typographical errors. Changes are periodically made to the information herein; these changes will be incorporated in new editions of the publication. IBM may make improvements and/or changes in the product(s) and/or the program(s) described in this publication at any time without notice.
- Any references in this information to non-IBM Web sites are provided for convenience only and do not in any manner serve as an endorsement of those Web sites. The materials at those Web sites are not part of the materials for this IBM product and use of those Web sites is at your own risk.
- IBM may use or distribute any of the information you supply in any way it believes appropriate without incurring any obligation to you.
- Licensees of this program who wish to have information about it for the purpose of enabling: (i) the exchange of information between independently created programs and other programs (including this one) and (ii) the mutual use of the information which has been exchanged, should contact:
 - IBM Corporation
Dept F6, Bldg 1
294 Route 100
Somers NY 10589-3216
USA
- Such information may be available, subject to appropriate terms and conditions, including in some cases, payment of a fee.
- The licensed program described in this document and all licensed material available for it are provided by IBM under terms of the IBM Customer Agreement, IBM International Program License Agreement or any equivalent agreement between us.
- Information concerning non-IBM products was obtained from the suppliers of those products, their published announcements or other publicly available sources. IBM has not tested those products and cannot confirm the accuracy of performance, compatibility or any other claims related to non-IBM products. Questions on the capabilities of non-IBM products should be addressed to the suppliers of those products.

COPYRIGHT LICENSE:

- This information contains sample application programs in source language, which illustrate programming techniques on various operating platforms. You may copy, modify, and distribute these sample programs in any form without payment to IBM, for the purposes of developing, using, marketing or distributing application programs conforming to the application programming interface for the operating platform for which the sample programs are written. These examples have not been thoroughly tested under all conditions. IBM, therefore, cannot guarantee or imply reliability, serviceability, or function of these programs.
- Each copy or any portion of these sample programs or any derivative work, must include a copyright notice as follows:
© (your company name) (year). Portions of this code are derived from IBM Corp. Sample Programs. © Copyright IBM Corp. _enter the year or years_. All rights reserved.

Support and comments

- For the entire IBM Worklight documentation set, training material and online forums where you can post questions, see the IBM website at:
 - <http://www.ibm.com/mobile-docs>
- **Support**
 - Software Subscription and Support (also referred to as Software Maintenance) is included with licenses purchased through Passport Advantage and Passport Advantage Express. For additional information about the International Passport Advantage Agreement and the IBM International Passport Advantage Express Agreement, visit the Passport Advantage website at:
 - <http://www.ibm.com/software/passportadvantage>
 - If you have a Software Subscription and Support in effect, IBM provides you assistance for your routine, short duration installation and usage (how-to) questions, and code-related questions. For additional details, consult your IBM Software Support Handbook at:
 - <http://www.ibm.com/support/handbook>
- **Comments**
 - We appreciate your comments about this publication. Please comment on specific errors or omissions, accuracy, organization, subject matter, or completeness of this document. The comments you send should pertain to only the information in this manual or product and the way in which the information is presented.
 - For technical questions and information about products and prices, please contact your IBM branch office, your IBM business partner, or your authorized remarketer.
 - When you send comments to IBM, you grant IBM a nonexclusive right to use or distribute your comments in any way it believes appropriate without incurring any obligation to you. IBM or any other organizations will only use the personal information that you supply to contact you about the issues that you state.
 - Thank you for your support.
 - Submit your comments in the IBM Worklight forums at:
 - <https://www.ibm.com/developerworks/mobile/mobileforum.html>
 - If you would like a response from IBM, please provide the following information:
 - Name
 - Address
 - Company or Organization
 - Phone No.
 - Email address

Thank You

