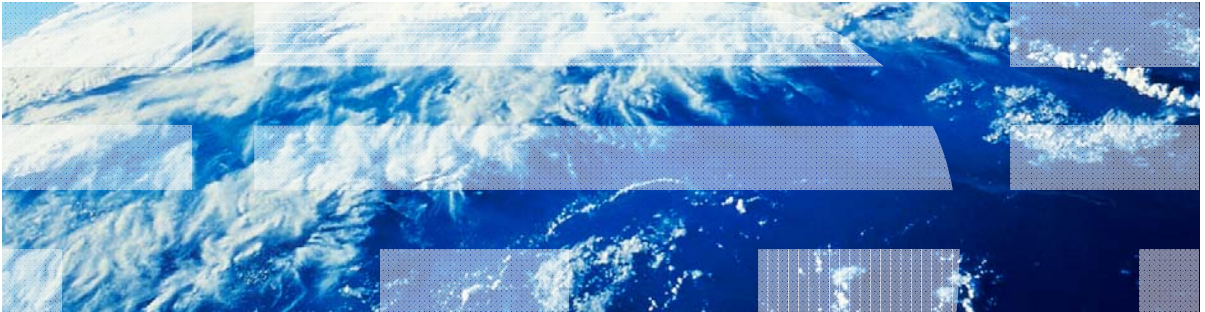


IBM Worklight V5.0.6 Getting Started

General information when developing desktop applications



Trademarks

- IBM, the IBM logo, and [ibm.com](http://www.ibm.com) are trademarks or registered trademarks of International Business Machines Corporation, registered in many jurisdictions worldwide. Worklight is a trademark or registered trademark of Worklight, an IBM Company. Other product and service names might be trademarks of IBM or other companies. A current list of IBM trademarks is available on the Web at “[Copyright and trademark information](http://www.ibm.com/legal/copytrade.shtml)” at www.ibm.com/legal/copytrade.shtml.
- Adobe, the Adobe logo, PostScript, and the PostScript logo are either registered trademarks or trademarks of Adobe Systems Incorporated in the United States, and/or other countries.
- Microsoft, Windows, Windows NT, and the Windows logo are trademarks of Microsoft Corporation in the United States, other countries, or both.
- Other company products or service names may be trademarks or service marks of others.
- This document may not be reproduced in whole or in part without the prior written permission of IBM.

About IBM®

- See <http://www.ibm.com/ibm/us/en/>

Agenda

- Supported Desktop Environments
- Development
- Environment-specific capabilities
- Environment-specific images
- Debugging the application
- Deployment

Supported Desktop Environments

- IBM Worklight® supports the following desktop environments:
 - Windows Store Apps - Built into the Windows 8 OS
 - Adobe Air - <http://get.adobe.com/air/>

Agenda

- Supported Desktop Environments
- **Development**
- Environment-specific capabilities
- Environment-specific images
- Debugging the application
- Deployment

Development

- Windows Store Apps
 - The development is done in the Worklight Studio and in Microsoft Visual Studio Express 2012 for Windows 8.
 - To open the project in Visual Studio Express 2012 for Windows 8, double-click the <APPLICATION_NAME>.jsproj file in the native folder.
 - The files in the project in Visual Studio Express 2012 for Windows 8 are the files in the Native folder in the Eclipse project.

- Adobe Air:
 - The development is done entirely in Worklight Studio.

Agenda

- Supported Desktop Environments
- Development
- Environment-specific capabilities
- Environment-specific images
- Debugging the application
- Deployment

Environment-Specific Capabilities: Windows Store Apps

- Some useful Windows Store Apps APIs implemented in the Worklight API:
 - Initialize an option menu: `WL.OptionsMenu.init();`
 - Add an item to the option menu: `WL.OptionsMenu.addItem('ID', function() {}, ITEM_TEXT, {image: 'PATH_TO_IMAGE_IN_THE_RESOURCES_FOLDER'});`
 - Override an icon with a default Windows 8 icon:
`document.getElementById('#ID').winControl.icon = 'refresh';`
- Other Windows Store Apps APIs:
 - `Windows.Devices.Geolocation`
 - `Windows.Media.Capture`
 - `Windows.ApplicationModel.Contacts`

Environment-Specific Capabilities: Windows Store Apps

- Add Options Menu to your application

Worklight Starter

Engadget's holiday gift guide 2012: gaming	>
Mon, 19 Nov 2012 12:00:00 EDT	
CE-Oh no he didn't! SpaceX creator Elon Musk says Ariane 5 rocket has 'no chance'	>
Mon, 19 Nov 2012 11:43:00 EDT	
Slickdeals' best in tech for November 19th: desktops, ASUS Transformer, and Panasonic Lumix DMC-GF3	>
Mon, 19 Nov 2012 11:33:00 EDT	
Samsung launches LTE edition of Galaxy Note 10.1 in Korea	>
Mon, 19 Nov 2012 11:20:00 EDT	
BeatBots co-founder Marek Michalowski encourages the world to hack Keepon (video)	>
Mon, 19 Nov 2012 11:00:00 EDT	
Huawei Ascend W1 makes an appearance in Blue and White	>
Mon, 19 Nov 2012 10:41:00 EDT	
Self-declared hipster builds Macintosh Portable case mod, goes well with skinny jeans (video)	>
Mon, 19 Nov 2012 10:22:00 EDT	
Windows 8 sales have been 'slow going,' Microsoft said to be blaming OEMs	>
Mon, 19 Nov 2012 10:05:00 EDT	
Warner Archive on-demand disc service kicks off Blu-ray availability with Gypsy, Deathtrap	>
Mon, 19 Nov 2012 09:55:00 EDT	

```
function afterInitEnv() {
  WL.OptionsMenu.init();
  WL.OptionsMenu.addItem('tab1', function() {selectTab('#feedsWrapper');}, Messages.tabFeed, {image: 'images/feed.png'});
  WL.OptionsMenu.addItem('tab2', function() {selectTab('#aboutTab');}, Messages.tabAbout, {image: 'images/about.png'});
  WL.OptionsMenu.addItem('tab3', function() {loadFeeds();}, Messages.reload, {image : 'images/reload.png'});
}
```

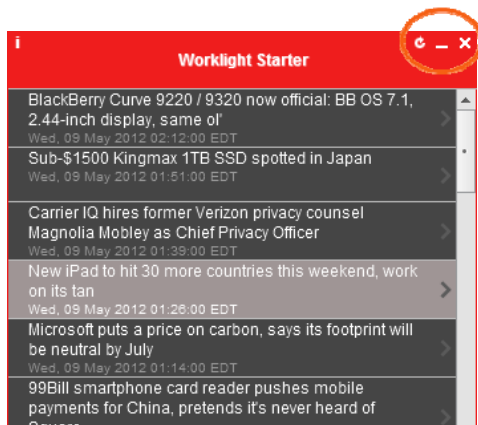
Weark here collection vehicle ranked on video	>
Mon, 19 Nov 2012 08:09:00 EDT	
Amazon Kindle celebrates five e-linked years	>
Mon, 19 Nov 2012 07:46:00 EDT	
Nintendo's Wii U gets gutted in the name of specs	>
Mon, 19 Nov 2012 07:26:00 EDT	
Start button utility strip seen more 'B' from Microsoft B, has sold 'tens of thousands' of copies	>

Environment-Specific Capabilities: Adobe AIR

- Some useful Adobe Air APIs:
 - Minimize window: `window.nativeWindow.minimize();`
 - Maximize window: `window.nativeWindow.maximize();`
 - Restore window: `window.nativeWindow.restore();`
 - Close window: `window.nativeWindow.close();`

Environment-Specific Capabilities: Adobe AIR

- Add minimize and close buttons to your app



```

50 function afterIntiEnv() {
51     createCloseAndMinimize();
52 }
53
54 function createCloseAndMinimize() {
55     var closeAir, minimizeAir;
56
57     closeAir = $('<a/>', {'id': 'closeAir'});
58     $('#content').append(closeAir);
59     closeAir.click(function() {
60         WL.Client.close();
61     });
62
63     minimizeAir = $('<a/>', {'id': 'minimizeAir'});
64     $('#content').append(minimizeAir);
65     minimizeAir.click(function() {
66         WL.Client.minimize();
67     });
68 }
69
70 #closeAir {
71     background: transparent url("../images/closeAndMinimize.png") no-repeat right top;
72     right: 2px;
73 }
74
75 #minimizeAir {
76     background: transparent url("../images/closeAndMinimize.png") no-repeat left top;
77     right: 19px;
78 }
  
```

Agenda

- Supported Desktop Environments
- Development
- Environment-specific capabilities
- Environment-specific images
- Debugging the application
- Deployment

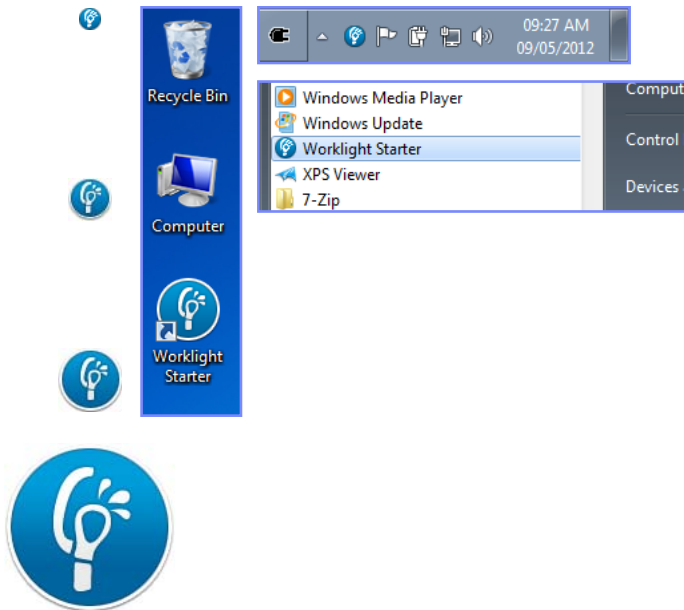
Environment-specific Images: Windows store Apps

- logo.png
The logo image represents the square tile image of the app in the Start screen
150px * 150px
- smalllogo.png
The small logo is displayed with your app display name in search results that are returned on the Start screen.
30px * 30px
- Splashscreen.png
The splash screen is displayed for a short time when the user opens the app.
620px * 300px
- Storelogo.png
The store logo is the image the Windows Store uses when it displays your app listing in search results and with the app description in the listing page.
50px * 50px



Environment-specific Images: Adobe Air

- icon.png
 - icon16x16.png
 - 16 px * 16px
 - Program menu icon
 - Tray icon
 - Minimum OS X desktop icon
 - icon32x32.png
 - 32px * 32px
 - Standard Windows desktop icon
 - Taskbar icon
 - Medium OS X desktop icon
 - icon48x48.png
 - 48px * 48px
 - Large Windows desktop icon
 - Large OS X desktop icon
 - Icon128x128.png
 - 128px * 128px
 - Maximum OS X desktop icon



Agenda

- Supported Desktop Environments
- Development
- Environment-specific capabilities
- Environment-specific images
- **Debugging the application**
- Deployment

Debugging the Application: Windows store Apps

- Debug by using Microsoft Visual Studio Express 2012 for Windows 8
- Use Worklight WL.Logger API

worklightStarter (Running) - Microsoft Visual Studio Express 2012 for Windows 8

Process: [8148] WWAHost.exe

DOM Explorer

```

worklightStarter.js
feedTitleMaxLength = 120,
response,
// Static members - Worklight adapter
FEEDS_ADAPTER = 'worklightStarterAdapter',
GET_FEEDS = 'gettinggetFeeds',
// Static members - Tabs
FEEDS_TAB = '#feedsWrapper',
FEEDS_DESCRIPTION_TAB = '#feedDescriptionTab',
ABOUT_TAB = '#aboutTab',

function wlCommonInit() {
    WL.Logger.debug('*** this is a debug message');
    beforeInitInv();
    // Common initialization code goes here
    // Initialize the busy indicator
    initializeBusy();
    busy.show();
}

// Show tabs only after application successfully initializes
$('.tab').removeClass('hidden');

```

JavaScript Console

Clear 0 Errors 2 Warnings 1 Messages

```

connect success
before: app init onSuccess
*** this is a debug message
Request: [http://localhost:8080/apps/.../api/worklightStarter/windows8/query]
after: app init onSuccess
wlclient init success

```

Solution Explorer

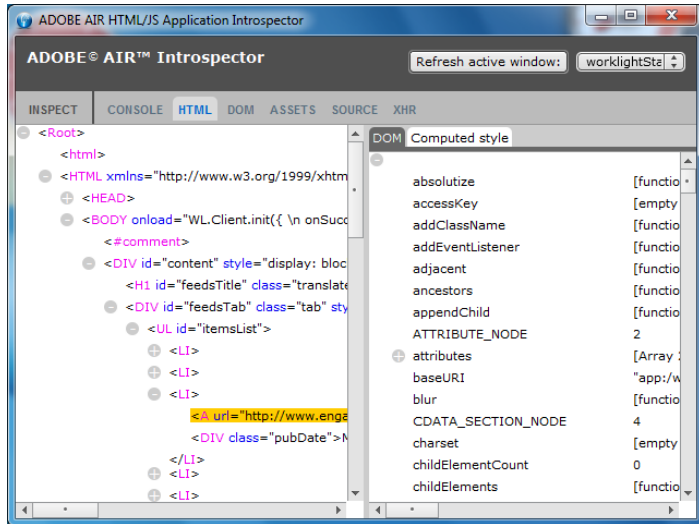
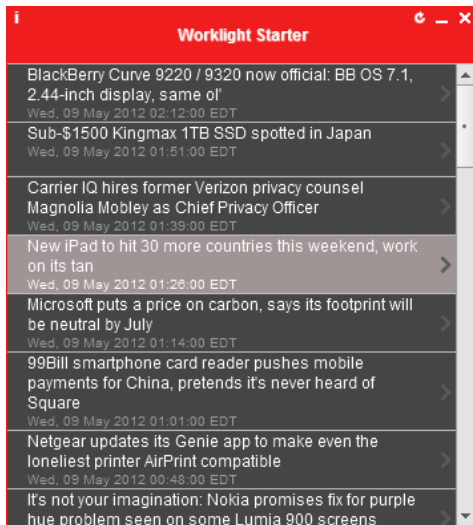
Solution 'worklightStarter' (1 project)

- Script Documents
 - MSAppHost/1.0
 - worklightStarter.html
 - wl.js
 - base.js
 - messages.js
 - wlcommon.js
 - busy.js
 - diagnosticDialog.js
 - deviceAuthentication.js
 - window.js
 - worklight.js
 - wlclient.js
 - wlfragments.js
 - encryptedcache.js
 - jsonstore.js
 - ansiSRPChallengeHandler.js
 - authenticityChallengeHandler.js
 - deviceAuthAutoProvisioningChal
 - deviceAuthNoProvisioningChalle
 - remoteDisableChallengeHandler.j
 - optionMenu.js
 - base.js
 - wl.js
 - initOptions.js
 - Utils.js
 - messages.js
 - worklightStarter.js

Ready

Debugging the Application: Adobe Air

- Debug by using the Adobe Air Introspector
- Click **F12** to start a session

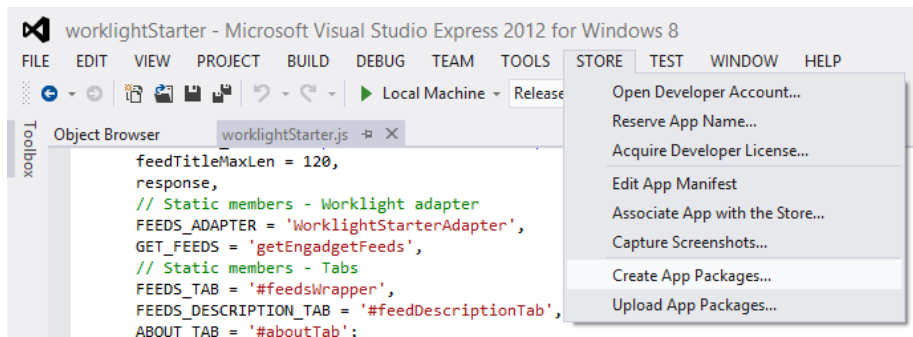


Agenda

- Supported Desktop Environments
- Development
- Environment-specific capabilities
- Environment-specific images
- Debugging the application
- **Deployment**

Deployment: Windows Store Apps

- Use Microsoft Visual Studio Express 2012 for Windows 8 to create App Packages



Deployment: Adobe Air

- Use the Worklight Console to get the Adobe Air package.

The screenshot displays the Worklight Console interface for the 'Worklight Starter' application. The top navigation bar includes 'Catalog', 'Push Notifications', and 'Active Users'. Below this, there is a section for 'Deploy application or adapter' with a 'Choose File' button and a 'Submit' button. The main content area shows the application details, including a description, last updated date, and a list of supported platforms. The 'Adobe Air' platform is highlighted with a red box, and its 'Install' link is visible. Other platforms listed include iPad, Android, Windows Phone, Vista, Dashboard, Facebook, iGoogle, Embedded, and Mobile Web.

Platform	Version	Status	Authentication	Action
iPad	Version 1.0	Active	App Authentication: Disabled Device Authentication: Enabled User Authentication: None	Lock this version
Android	Version 1.0	Active	App Authentication: Disabled Device Authentication: Enabled User Authentication: None	Lock this version
Windows Phone	Version 1.0	Active		
Vista	Version 1.0			Install
Adobe Air	Version 1.0			Install
Dashboard	Version 1.0			Install
Facebook	Version 1.0			Get App URL
iGoogle	Version 1.0			Get Descriptor
Embedded	Version 1.0			Embed in Web Page
Mobile Web	Version 1.0			Get App URL

[Preview as Common Resources](#)

Exercise: Optimize Worklight Starter

- This exercise is based on the **WorklightStarter** application
- Optimize **Worklight Starter** for Windows store Apps:
 - Optimize design
 - Option Menu
- Optimize the **Worklight Starter** for Air:
 - Optimize color scheme
 - Minimize & Close buttons

Exercise: Optimize the RSS Reader

- Optimize for Windows store Apps
 - Add an Option menu With Feeds About and Reload buttons

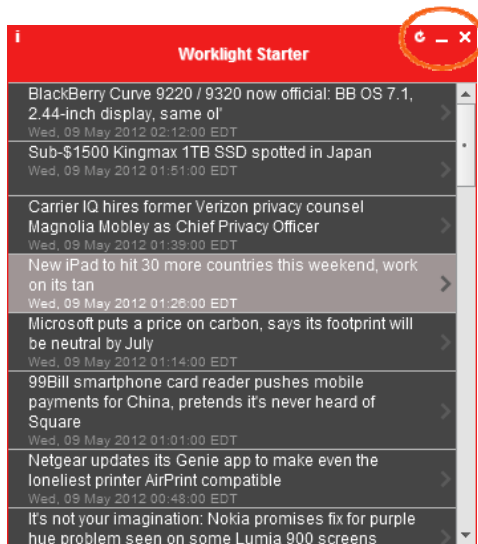
Worklight Starter	
Engadget's holiday gift guide 2012: gaming Mon, 19 Nov 2012 12:00:00 EDT	>
CE-Oh no he didn't! SpaceX creator Elon Musk says Ariane 5 rocket has 'no chance' Mon, 19 Nov 2012 11:43:00 EDT	>
Slickdeals' best in tech for November 19th: desktops, ASUS Transformer, and Panasonic Lumix DMC-GF3 Mon, 19 Nov 2012 11:33:00 EDT	>
Samsung launches LTE edition of Galaxy Note 10.1 in Korea Mon, 19 Nov 2012 11:20:00 EDT	>
BeatBots co-founder Marek Michalowski encourages the world to hack Keepon (video) Mon, 19 Nov 2012 11:00:00 EDT	>
Huawei Ascend W1 makes an appearance in Blue and White Mon, 19 Nov 2012 10:41:00 EDT	>
Self-declared hipster builds Macintosh Portable case mod, goes well with skinny jeans (video) Mon, 19 Nov 2012 10:22:00 EDT	>
Windows 8 sales have been 'slow going,' Microsoft said to be blaming OEMs Mon, 19 Nov 2012 10:05:00 EDT	>
Warner Archive on-demand disc service kicks off Blu-ray availability with Gypsy, Deathtrap Mon, 19 Nov 2012 09:48:00 EDT	>
Intel CEO Paul Otellini to step down in May, leaves a legacy of x86 dominance Mon, 19 Nov 2012 09:11:00 EDT	>
Elgato EyeTV Mobile ships to the US, brings Dyle live TV tuning to data cap-dodging iOS users Mon, 19 Nov 2012 09:00:00 EDT	>
Samsung ATIV S for Vodafone UK goes up for pre-order at Phones4U with a December launch Mon, 19 Nov 2012 08:40:00 EDT	>
Opera Mobile launches Unlimited Music service in Russia Mon, 19 Nov 2012 08:29:00 EDT	>
Nokia Here collection vehicle hands-on (video) Mon, 19 Nov 2012 08:09:00 EDT	>
Amazon Kindle celebrates five e-inked years Mon, 19 Nov 2012 07:46:00 EDT	>
Nintendo's Wii U gets gutted in the name of specs Mon, 19 Nov 2012 07:26:00 EDT	>

Click button with the three lines icon to see more '8' from Windows 8. For sold 'tens of thousands' of copies



Exercise: Optimize the RSS Reader

- Optimize for Air
 - Add Minimize & Close buttons to the Air environment



Notices

- Permission for the use of these publications is granted subject to these terms and conditions.
- This information was developed for products and services offered in the U.S.A.
- IBM may not offer the products, services, or features discussed in this document in other countries. Consult your local IBM representative for information on the products and services currently available in your area. Any reference to an IBM product, program, or service is not intended to state or imply that only that IBM product, program, or service may be used. Any functionally equivalent product, program, or service that does not infringe any IBM intellectual property right may be used instead. However, it is the user's responsibility to evaluate and verify the operation of any non-IBM product, program, or service.
- IBM may have patents or pending patent applications covering subject matter described in this document. The furnishing of this document does not grant you any license to these patents. You can send license inquiries, in writing, to:
 - IBM Director of Licensing
IBM Corporation
North Castle Drive
Armonk, NY 10504-1785
U.S.A.
- For license inquiries regarding double-byte character set (DBCS) information, contact the IBM Intellectual Property Department in your country or send inquiries, in writing, to:
 - Intellectual Property Licensing
Legal and Intellectual Property Law
IBM Japan Ltd.
1623-14, Shimotsuruma, Yamato-shi
Kanagawa 242-8502 Japan
- **The following paragraph does not apply to the United Kingdom or any other country where such provisions are inconsistent with local law:** INTERNATIONAL BUSINESS MACHINES CORPORATION PROVIDES THIS PUBLICATION "AS IS" WITHOUT WARRANTY OF ANY KIND, EITHER EXPRESS OR IMPLIED, INCLUDING, BUT NOT LIMITED TO, THE IMPLIED WARRANTIES OF NON-INFRINGEMENT, MERCHANTABILITY OR FITNESS FOR A PARTICULAR PURPOSE. Some states do not allow disclaimer of express or implied warranties in certain transactions, therefore, this statement may not apply to you.
- This information could include technical inaccuracies or typographical errors. Changes are periodically made to the information herein; these changes will be incorporated in new editions of the publication. IBM may make improvements and/or changes in the product(s) and/or the program(s) described in this publication at any time without notice.
- Any references in this information to non-IBM Web sites are provided for convenience only and do not in any manner serve as an endorsement of those Web sites. The materials at those Web sites are not part of the materials for this IBM product and use of those Web sites is at your own risk.
- IBM may use or distribute any of the information you supply in any way it believes appropriate without incurring any obligation to you.
- Licensees of this program who wish to have information about it for the purpose of enabling: (i) the exchange of information between independently created programs and other programs (including this one) and (ii) the mutual use of the information which has been exchanged, should contact:
 - IBM Corporation
Dept F6, Bldg 1
294 Route 100
Somers NY 10589-3216
USA

- Such information may be available, subject to appropriate terms and conditions, including in some cases, payment of a fee.
- The licensed program described in this document and all licensed material available for it are provided by IBM under terms of the IBM Customer Agreement, IBM International Program License Agreement or any equivalent agreement between us.
- Information concerning non-IBM products was obtained from the suppliers of those products, their published announcements or other publicly available sources. IBM has not tested those products and cannot confirm the accuracy of performance, compatibility or any other claims related to non-IBM products. Questions on the capabilities of non-IBM products should be addressed to the suppliers of those products.

COPYRIGHT LICENSE:

- This information contains sample application programs in source language, which illustrate programming techniques on various operating platforms. You may copy, modify, and distribute these sample programs in any form without payment to IBM, for the purposes of developing, using, marketing or distributing application programs conforming to the application programming interface for the operating platform for which the sample programs are written. These examples have not been thoroughly tested under all conditions. IBM, therefore, cannot guarantee or imply reliability, serviceability, or function of these programs.
- Each copy or any portion of these sample programs or any derivative work, must include a copyright notice as follows:
 - © (your company name) (year). Portions of this code are derived from IBM Corp. Sample Programs. © Copyright IBM Corp., enter the year or years. All rights reserved.

Privacy Policy Considerations

- IBM Software products, including software as a service solutions, ("Software Offerings") may use cookies or other technologies to collect product usage information, to help improve the end user experience, to tailor interactions with the end user or for other purposes. In many cases no personally identifiable information is collected by the Software Offerings. Some of our Software Offerings can help enable you to collect personally identifiable information. If this Software Offering uses cookies to collect personally identifiable information, specific information about this offering's use of cookies is set forth below.
- Depending upon the configurations deployed, this Software Offering may use session cookies that collect session information (generated by the application server). These cookies contain no personally identifiable information and are required for session management. Additionally, persistent cookies may be randomly generated to recognize and manage anonymous users. These cookies also contain no personally identifiable information and are required.
- If the configurations deployed for this Software Offering provide you as customer the ability to collect personally identifiable information from end users via cookies and other technologies, you should seek your own legal advice about any laws applicable to such data collection, including any requirements for notice and consent. For more information about the use of various technologies, including cookies, for these purposes, see IBM's Privacy Policy at <http://www.ibm.com/privacy>; and IBM's Online Privacy Statement at <http://www.ibm.com/privacy/details/en/us> sections entitled "Cookies, Web Beacons and Other Technologies" and "Software Products and Software-as-a-Service".

Support and comments

- For the entire IBM Worklight documentation set, training material and online forums where you can post questions, see the IBM website at:
 - <http://www.ibm.com/mobile-docs>
- **Support**
 - Software Subscription and Support (also referred to as Software Maintenance) is included with licenses purchased through Passport Advantage and Passport Advantage Express. For additional information about the International Passport Advantage Agreement and the IBM International Passport Advantage Express Agreement, visit the Passport Advantage website at:
 - <http://www.ibm.com/software/passportadvantage>
 - If you have a Software Subscription and Support in effect, IBM provides you assistance for your routine, short duration installation and usage (how-to) questions, and code-related questions. For additional details, consult your IBM Software Support Handbook at:
 - <http://www.ibm.com/support/handbook>
- **Comments**
 - We appreciate your comments about this publication. Please comment on specific errors or omissions, accuracy, organization, subject matter, or completeness of this document. The comments you send should pertain to only the information in this manual or product and the way in which the information is presented.
 - For technical questions and information about products and prices, please contact your IBM branch office, your IBM business partner, or your authorized remarketer.
 - When you send comments to IBM, you grant IBM a nonexclusive right to use or distribute your comments in any way it believes appropriate without incurring any obligation to you. IBM or any other organizations will only use the personal information that you supply to contact you about the issues that you state.
 - Thank you for your support.
 - Submit your comments in the IBM Worklight forums at:
 - <https://www.ibm.com/developerworks/mobile/mobileforum.html>
 - If you would like a response from IBM, please provide the following information:
 - Name
 - Address
 - Company or Organization
 - Phone No.
 - Email address

Thank You

