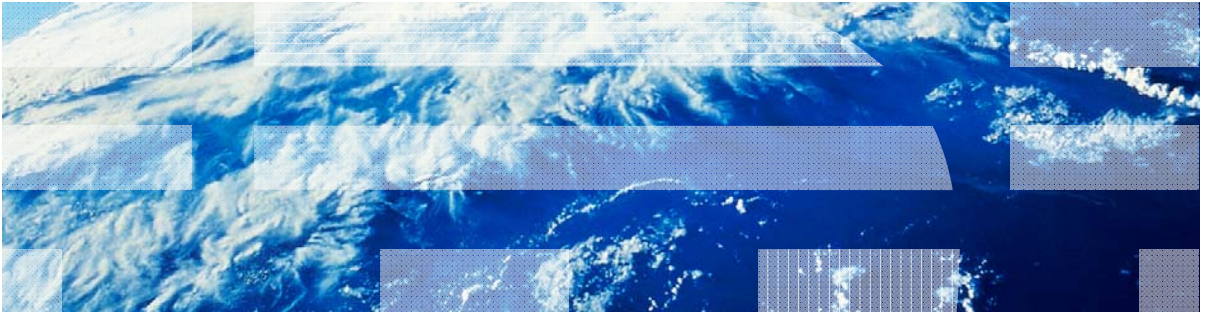


IBM Worklight V6.0.0 Getting Started

**Moving from development environment to stand-alone QA
and production servers**



Trademarks

- IBM, the IBM logo, and ibm.com are trademarks or registered trademarks of International Business Machines Corporation, registered in many jurisdictions worldwide. Worklight is a trademark or registered trademark of Worklight, an IBM Company. Other product and service names might be trademarks of IBM or other companies. A current list of IBM trademarks is available on the web at “[Copyright and trademark information](http://www.ibm.com/legal/copytrade.shtml)” at www.ibm.com/legal/copytrade.shtml.
- Microsoft, Windows, Windows NT, and the Windows logo are trademarks of Microsoft Corporation in the United States, other countries, or both.
- Java and all Java-based trademarks and logos are trademarks or registered trademarks of Oracle and/or its affiliates.
- Other company products or service names may be trademarks or service marks of others.
- This document may not be reproduced in whole or in part without the prior written permission of IBM.

About IBM®

- See <http://www.ibm.com/ibm/us/en/>

Using this module

- IBM® Worklight® development is performed using *Worklight Studio*. Worklight Studio contains an internal *Worklight Server*.
- To go to production, you are required to have an external Worklight Server
- This module is intended for use in conjunction with a Worklight Server, which is available for purchase from IBM.

Agenda

- Overview
- Prepare your application for deployment
- IBM Worklight in a cluster environment

Overview

- A Worklight project contains various components, such as applications, adapters, configuration files, custom Java™ code, and libraries.
- During the development stages, all of these components are deployed to a local development server bundled within Worklight Studio.
- Deploying the components to a local development server is automated by Worklight Studio.
- Each customer environment (for example: development, QA, pre-production, production) has its own unique Worklight-specific settings; for example, the locations of backend services, public URLs, database connectivity parameters, and logging settings.
- Eventually, you will need to transfer these settings and components to the remote server.
- This module explains to the **developer** how to package the IBM Worklight components and deploy them to a remote server.

Overview – Worklight Project

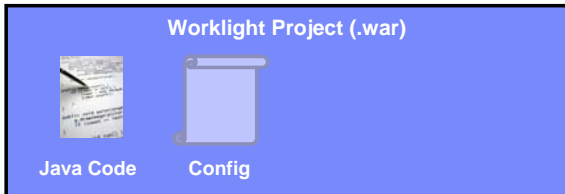
- The following diagram depicts a Worklight project. A Worklight project may contain: applications, adapters, custom Java code, and server- or client-related configuration files.



- The custom Java code and libraries are added to the `\server\java` and `\server\lib` folders respectively.
- The server configuration files reside in the `server\conf` folder.
- The client configuration files reside in the `apps\your-app` folder.

Overview – Worklight Project

- During a Build operation in Worklight Studio, the Worklight project is packaged to what is referred to as a WAR file.
- All of the files mentioned in the previous slide are automatically compiled to the *project-name.war* file under the `\bin` folder of the project.
- The only exceptions are Apps and Adapters, which are not part of the WAR file. These are separate entities generated by Worklight Studio.



- The code for the Worklight Console website is also bundled within the Worklight Project WAR file.

Overview – Installing Worklight Server

- IBM Worklight is compatible with the following application servers:
WebSphere® Application Server Full Profile, WebSphere Application Server Liberty Profile, and Apache Tomcat.

Overview – Installing Worklight Server

- Worklight Server installation is comprised of three steps:
 1. Using the IBM Installation Manager to extract Worklight Server files into your file system.

File system

- Worklight Platform files
- Sample Ant task scripts

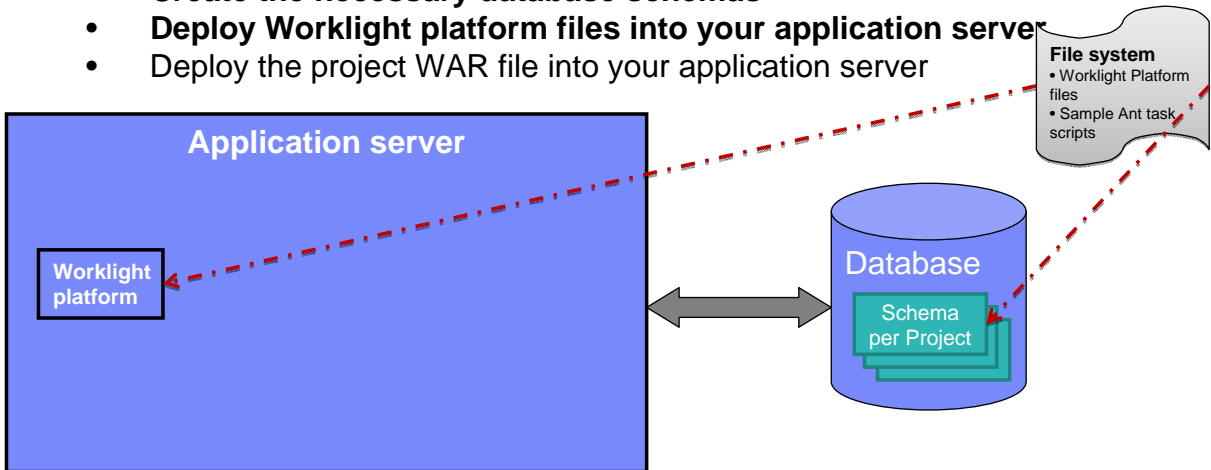
Application server

- For more information, search for “***Installing Worklight Server***” in the IBM Worklight user documentation.

Overview – Installing Worklight Server

2. For each Worklight project, run an Ant task to:

- **Create the necessary database schemas**
- **Deploy Worklight platform files into your application server**
- Deploy the project WAR file into your application server

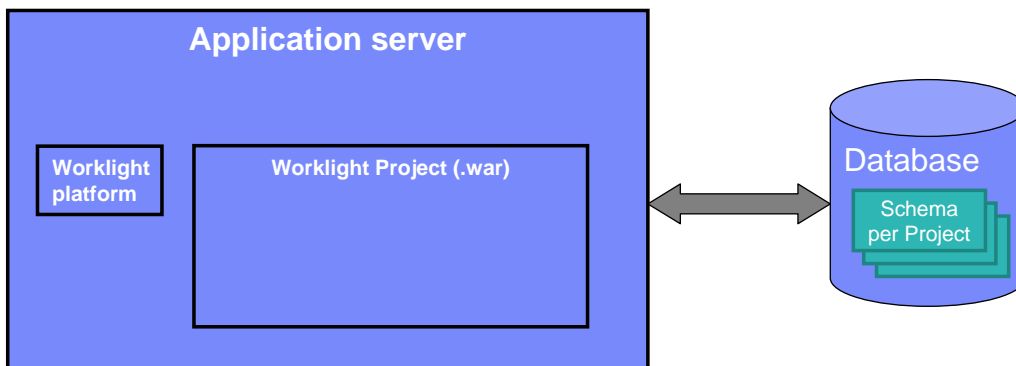


- For more information, search for “**Deploying a project WAR file and configuring the application server with Ant tasks**” in the IBM Worklight user documentation.

Overview – Installing Worklight Server

2 (continued). For each Worklight project, run an Ant task to:

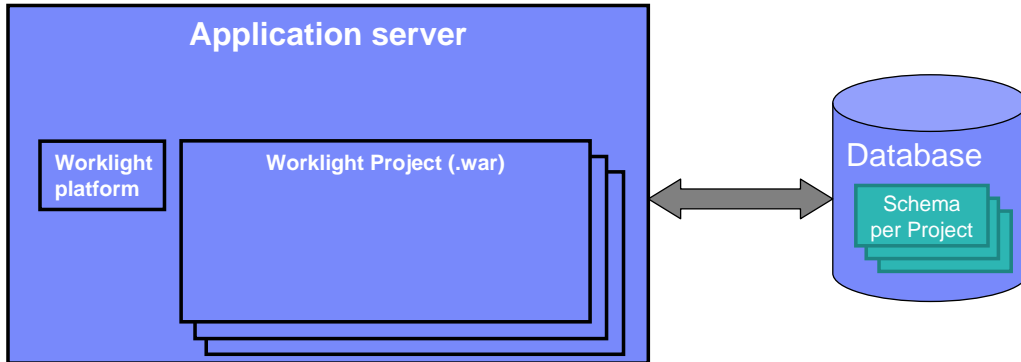
- Create the necessary database schemas
- Deploy Worklight platform files into your application server
- **Deploy the project “.war file” into your application server**



- For more information, search for “***Deploying a project WAR file and configuring the application server with Ant tasks***” in the IBM Worklight user documentation.

Overview – Installing Worklight Server

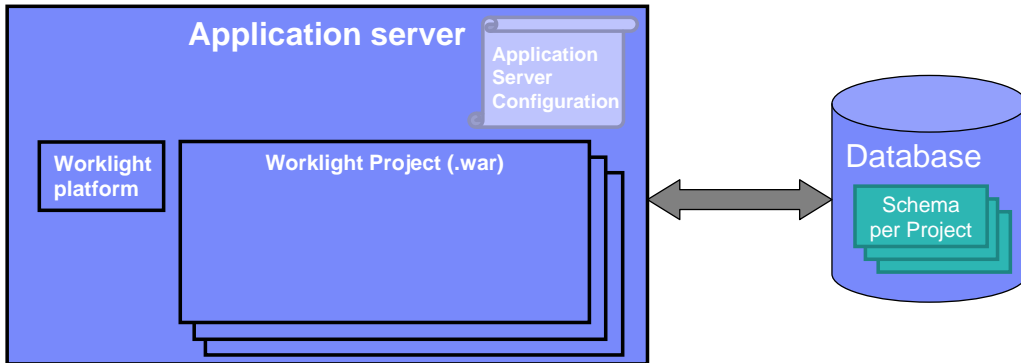
- Multiple Worklight project files can co-exist in an application server. Each is deployed as a WAR file. Each is configured to communicate with a different schema in the database.



Overview – Installing Worklight Server

3. Edit the application server configuration file with additional Worklight properties.

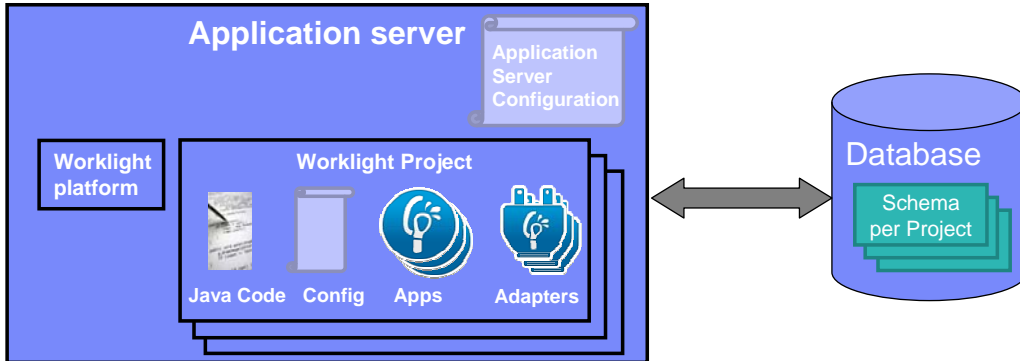
```
<configureapplicationserver shortcutsDir="${shortcuts.dir}">
  <project warfile="${worklight.project.war.file}"/>
  <!-- Specify some JNDI properties. -->
  <property name="publicWorkLightHostname" value="my.company.com"/>
  <property name="publicWorkLightPort" value="80"/>
  <property name="publicWorkLightProtocol" value="http"/>
  <property name="serverSessionTimeout" value="10"/>
</applicationserver>
```



- For more information, search for “**Configuring an IBM Worklight project in production by using JNDI environment entries**” in the IBM Worklight user documentation.

Overview – Deploy applications and adapters

- After having deployed a WAR file to your application server, start the application server
- You can now open the Worklight Console at: <http://server:port/context-root/console>
- Use the Worklight Console to deploy applications and adapters.



Process review

- The previously-described process consists of three main steps:
 - Application server preparation:
 - Using IBM Installation Manager to extract installation files
 - Using the provided Ant scripts to prepare the database, copy Worklight platform files and deploy the Worklight project's .war file
 - Prepare the application for deployment:
 - Build the application
 - Deploy the application and adapter files:
 - Deploy applications and adapters by using the Worklight Console.

- For more information, consult the IBM Worklight Getting Started modules and user documentation.

Agenda

- Overview
- Prepare your application for deployment
- IBM Worklight in a cluster environment

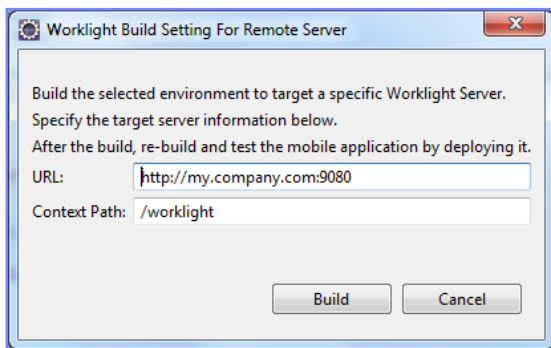
Prepare your application for deployment

- The **application-descriptor.xml** file contains all the application-specific information and settings. These include:
 - Worklight Settings
 - Push Notifications
 - Security (authenticity, web resources encryption, web resources, checksum)
- The **build-settings.xml** file contains Mobile Web-specific information and settings. These include:
 - Minification
 - Concatenation

- For more information, consult the IBM Worklight Getting Started modules and user documentation.

Prepare your application for deployment

- An important part of preparing the application for deployment is to make sure it will point to the QA/pre-production/production server, so that the application will be able to connect to the server.
- This is accomplished by:
 - Right-clicking on the application
 - Choosing **Run As > Build for Remote Server**
 - Entering the **URL** and **Context Path** values



Agenda

- Overview
- Prepare your application for deployment
- IBM Worklight in a cluster environment

IBM Worklight in a cluster environment

- Several Worklight Servers can be set up in a cluster environment, sharing a database.
- When a `.wlappp` or `.adapter` file is deployed on one of the servers in a cluster, it is automatically synchronized to other servers.
- When an application or an adapter is deleted from one of the servers in a cluster, it is automatically deleted from the other servers as well.
- A WAR file, however, is a part of the application server customization. It must therefore be deployed to each server in the cluster. With WebSphere Application Server Full Profile, you can specify the cluster when invoking the Ant task; otherwise, invoke the Ant task once for each server in the cluster.
- By default, cluster synchronization is performed with a 4-second interval. You can change this interval by adding to and adjusting the **`cluster.data.synchronization.taskFrequencyInSeconds`** property in the `worklight.properties` file. This can also be controlled via the JNDI configuration.

Notices

- Permission for the use of these publications is granted subject to these terms and conditions.
- This information was developed for products and services offered in the U.S.A.
- IBM may not offer the products, services, or features discussed in this document in other countries. Consult your local IBM representative for information on the products and services currently available in your area. Any reference to an IBM product, program, or service is not intended to state or imply that only that IBM product, program, or service may be used. Any functionally equivalent product, program, or service that does not infringe any IBM intellectual property right may be used instead. However, it is the user's responsibility to evaluate and verify the operation of any non-IBM product, program, or service.
- IBM may have patents or pending patent applications covering subject matter described in this document. The furnishing of this document does not grant you any license to these patents. You can send license inquiries, in writing, to:
 - IBM Director of Licensing
IBM Corporation
North Castle Drive
Armonk, NY 10504-1785
U.S.A.
- For license inquiries regarding double-byte character set (DBCS) information, contact the IBM Intellectual Property Department in your country or send inquiries, in writing, to:
 - Intellectual Property Licensing
Legal and Intellectual Property Law
IBM Japan Ltd.
1623-14, Shimotsuruma, Yamato-shi
Kanagawa 242-8502 Japan
- **The following paragraph does not apply to the United Kingdom or any other country where such provisions are inconsistent with local law: INTERNATIONAL BUSINESS MACHINES CORPORATION PROVIDES THIS PUBLICATION "AS IS" WITHOUT WARRANTY OF ANY KIND, EITHER EXPRESS OR IMPLIED, INCLUDING, BUT NOT LIMITED TO, THE IMPLIED WARRANTIES OF NON-INFRINGEMENT, MERCHANTABILITY OR FITNESS FOR A PARTICULAR PURPOSE. Some states do not allow disclaimer of express or implied warranties in certain transactions, therefore, this statement may not apply to you.**
- This information could include technical inaccuracies or typographical errors. Changes are periodically made to the information herein; these changes will be incorporated in new editions of the publication. IBM may make improvements and/or changes in the product(s) and/or the program(s) described in this publication at any time without notice.
- Any references in this information to non-IBM Web sites are provided for convenience only and do not in any manner serve as an endorsement of those Web sites. The materials at those Web sites are not part of the materials for this IBM product and use of those Web sites is at your own risk.
- IBM may use or distribute any of the information you supply in any way it believes appropriate without incurring any obligation to you.
- Licensees of this program who wish to have information about it for the purpose of enabling: (i) the exchange of information between independently created programs and other programs (including this one) and (ii) the mutual use of the information which has been exchanged, should contact:
 - IBM Corporation
Dept F6, Bldg 1
294 Route 100
Somers NY 10589-3216
USA

- Such information may be available, subject to appropriate terms and conditions, including in some cases, payment of a fee.
- The licensed program described in this document and all licensed material available for it are provided by IBM under terms of the IBM Customer Agreement, IBM International Program License Agreement or any equivalent agreement between us.
- Information concerning non-IBM products was obtained from the suppliers of those products, their published announcements or other publicly available sources. IBM has not tested those products and cannot confirm the accuracy of performance, compatibility or any other claims related to non-IBM products. Questions on the capabilities of non-IBM products should be addressed to the suppliers of those products.

COPYRIGHT LICENSE:

- This information contains sample application programs in source language, which illustrate programming techniques on various operating platforms. You may copy, modify, and distribute these sample programs in any form without payment to IBM, for the purposes of developing, using, marketing or distributing application programs conforming to the application programming interface for the operating platform for which the sample programs are written. These examples have not been thoroughly tested under all conditions. IBM, therefore, cannot guarantee or imply reliability, serviceability, or function of these programs.
- Each copy or any portion of these sample programs or any derivative work, must include a copyright notice as follows:
 - © (your company name) (year). Portions of this code are derived from IBM Corp. Sample Programs. © Copyright IBM Corp., enter the year or years. All rights reserved.

Privacy Policy Considerations

- IBM Software products, including software as a service solutions, ("Software Offerings") may use cookies or other technologies to collect product usage information, to help improve the end user experience, to tailor interactions with the end user or for other purposes. In many cases no personally identifiable information is collected by the Software Offerings. Some of our Software Offerings can help enable you to collect personally identifiable information. If this Software Offering uses cookies to collect personally identifiable information, specific information about this offering's use of cookies is set forth below.
- Depending upon the configurations deployed, this Software Offering may use session cookies that collect session information (generated by the application server). These cookies contain no personally identifiable information and are required for session management. Additionally, persistent cookies may be randomly generated to recognize and manage anonymous users. These cookies also contain no personally identifiable information and are required.
- If the configurations deployed for this Software Offering provide you as customer the ability to collect personally identifiable information from end users via cookies and other technologies, you should seek your own legal advice about any laws applicable to such data collection, including any requirements for notice and consent. For more information about the use of various technologies, including cookies, for these purposes, see IBM's Privacy Policy at <http://www.ibm.com/privacy> and IBM's Online Privacy Statement at <http://www.ibm.com/privacy/details> the sections entitled "Cookies, Web Beacons and Other Technologies" and the "IBM Software Products and Software-as-a-Service Privacy Statement" at <http://www.ibm.com/software/info/product-privacy>.

Support and comments

- For the entire IBM Worklight documentation set, training material and online forums where you can post questions, see the IBM website at:
 - <http://www.ibm.com/mobile-docs>
- **Support**
 - Software Subscription and Support (also referred to as Software Maintenance) is included with licenses purchased through Passport Advantage and Passport Advantage Express. For additional information about the International Passport Advantage Agreement and the IBM International Passport Advantage Express Agreement, visit the Passport Advantage website at:
 - <http://www.ibm.com/software/passportadvantage>
 - If you have a Software Subscription and Support in effect, IBM provides you assistance for your routine, short duration installation and usage (how-to) questions, and code-related questions. For additional details, consult your IBM Software Support Handbook at:
 - <http://www.ibm.com/support/handbook>
- **Comments**
 - We appreciate your comments about this publication. Please comment on specific errors or omissions, accuracy, organization, subject matter, or completeness of this document. The comments you send should pertain to only the information in this manual or product and the way in which the information is presented.
 - For technical questions and information about products and prices, please contact your IBM branch office, your IBM business partner, or your authorized remarketer.
 - When you send comments to IBM, you grant IBM a nonexclusive right to use or distribute your comments in any way it believes appropriate without incurring any obligation to you. IBM or any other organizations will only use the personal information that you supply to contact you about the issues that you state.
 - Thank you for your support.
 - Submit your comments in the IBM Worklight Developer Edition support community at:
 - <https://www.ibm.com/developerworks/mobile/worklight/connect.html>
 - If you would like a response from IBM, please provide the following information:
 - Name
 - Address
 - Company or Organization
 - Phone No.
 - Email address

Thank You

