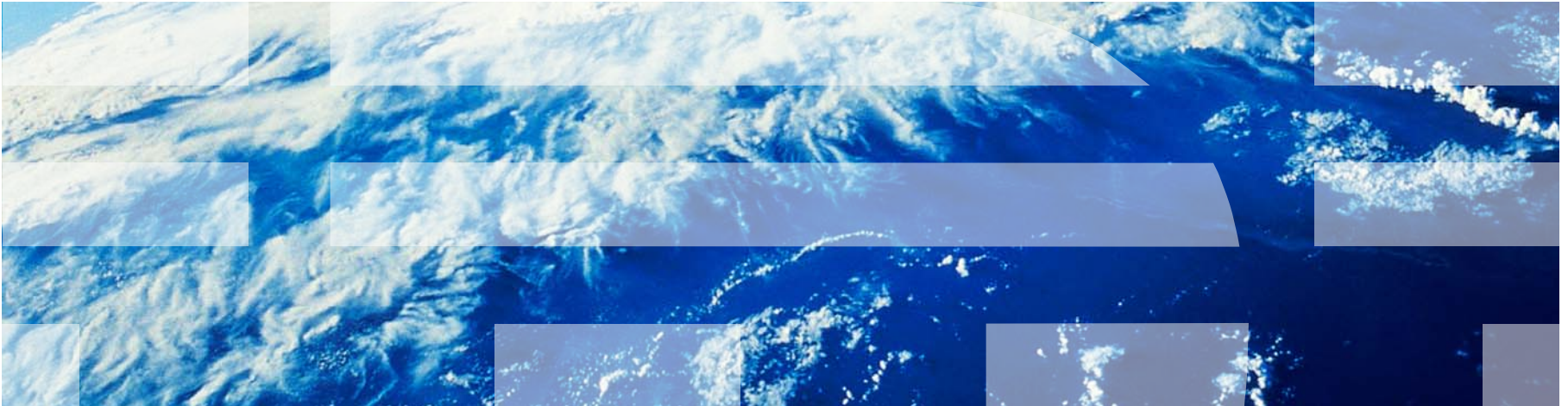


# ***IBM Worklight V6.1.0 Getting Started***

## **General information when developing desktop applications**



# Trademarks

- IBM, the IBM logo, and ibm.com are trademarks or registered trademarks of International Business Machines Corporation, registered in many jurisdictions worldwide. Worklight is a trademark or registered trademark of Worklight, an IBM Company. Other product and service names might be trademarks of IBM or other companies. A current list of IBM trademarks is available on the Web at “[Copyright and trademark information](#)” at [www.ibm.com/legal/copytrade.shtml](http://www.ibm.com/legal/copytrade.shtml).
- Adobe, the Adobe logo, PostScript, and the PostScript logo are either registered trademarks or trademarks of Adobe Systems Incorporated in the United States, and/or other countries.
- Microsoft, Windows, Windows NT, and the Windows logo are trademarks of Microsoft Corporation in the United States, other countries, or both.
- Other company products or service names may be trademarks or service marks of others.
- This document may not be reproduced in whole or in part without the prior written permission of IBM.

## About IBM®

- See <http://www.ibm.com/ibm/us/en/>

# Agenda

- Supported desktop environments
- Desktop development
  - Environment-specific APIs
  - Environment-specific images
  - Apache Cordova
  - Optimizing for Desktop Browser web page
- Debugging the application
- Deployment

## ***Supported desktop environments***

- IBM Worklight® supports the following desktop environments:
  - **Windows Store Apps** – Built into the Windows 8 OS
  - **Adobe Air** – <http://get.adobe.com/air/>
  - **Desktop Browser web page**

# Agenda

- Supported desktop environments
- Desktop development
  - Environment-specific APIs
  - Environment-specific images
  - Apache Cordova
  - Optimizing for Desktop Browser web page
- Debugging the application
- Deployment

## ***Desktop development***

### ***Windows 8***

- Development for Windows 8 apps (known as Windows Store apps) is done in Worklight Studio and later continued in Microsoft Visual Studio Express 2012 for Windows 8.
  - To open the project in Visual Studio Express 2012 for Windows 8, double-click the `<APPLICATION_NAME>.jsproj` file that is in the native folder.
- Adobe Air and Desktop browser web page:
  - The development is done entirely in Worklight Studio.

## ***Desktop development – continued***

### ***Windows 8***

- It is useful to always consult with the Microsoft Design and Develop websites when you develop applications.
  - Design: <http://msdn.microsoft.com/en-US/windows/apps/hh779072>
  - Develop: <http://msdn.microsoft.com/en-US/windows/apps/br229519>

## ***Desktop development – continued***

### ***Adobe Air, Desktop Browser web page***

- The development is done entirely in Worklight Studio.



# Agenda

- Supported desktop environments
- Desktop development
  - Environment-specific APIs
  - Environment-specific images
  - Apache Cordova
  - Optimizing for Desktop Browser web page
- Debugging the application
- Deployment

# ***Environment-specific APIs***

## ***Windows 8***

- In Windows 8, the menu bar is called “Application Bar”, however it uses the same IBM Worklight API methods as the Options Menu feature in Android.
- When displayed, the menu holds up to four menu items.
- For more information about the Options Menu development, see the *Common UI Controls* training module.

## ***Environment-specific APIs – continued***

### ***Windows 8***

- Override an icon with a default Windows 8 icon:  

```
document.getElementById( '#ID' ).winControl.icon =  
'refresh' ;
```
- Other Windows Store Apps APIs:
  - `Windows.Devices.Geolocation`
  - `Windows.Media.Capture`
  - `Windows.ApplicationModel.Contacts`
  - **Note:** Cordova also covers Windows 8.

## ***Environment-specific APIs – continued***

### ***Adobe Air***

- Some useful Adobe Air APIs:
  - Minimize a window: `window.nativeWindow.minimize()` ;
  - Maximize a window: `window.nativeWindow.maximize()` ;
  - Restore a window: `window.nativeWindow.restore()` ;
  - Close a window: `window.nativeWindow.close()` ;

# Environment-specific APIs – continued

## Adobe Air

- Add minimize and close buttons to your app.

```

5 function afterIntiEnv() {
6     createCloseAndMinimize();
7 }
8
9 function createCloseAndMinimize() {
10    var closeAir, minimizeAir;
11
12    closeAir = $('<a/>', {'id' : 'closeAir'});
13    $('#content').append(closeAir);
14    closeAir.click(function() {
15        WL.Client.close();
16    });
17
18    minimizeAir = $('<a/>', {'id' : 'minimizeAir'});
19    $('#content').append(minimizeAir);
20    minimizeAir.click(function() {
21        WL.Client.minimize();
22    });
23 }
24

```

```

89 #closeAir {
90     background: transparent url("../images/closeAndMinimize.png") no-repeat right top;
91     right: 2px;
92 }
93
94 #minimizeAir {
95     background: transparent url("../images/closeAndMinimize.png") no-repeat left top;
96     right: 19px;
97 }

```

# Agenda

- Supported desktop environments
- Desktop development
  - Environment-specific APIs
  - Environment-specific images
  - Apache Cordova
  - Optimizing for Desktop Browser web page
- Debugging the application
- Deployment

# Environment-specific images

## Windows 8

- **logo.png**

The logo image represents the square tile image of the app in the Start screen.

150px \* 150px



- **smalllogo.png**

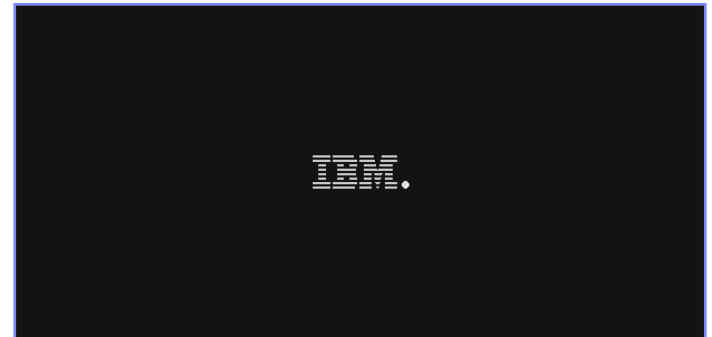
The small logo is displayed with your app display name in search results that are returned on the Start screen.

30px \* 30px 

- **Splashscreen.png**

The splash screen is displayed for a short time when the user opens the app.

620px \* 300px



- **Storelogo.png**

The store logo is the image the Windows Store uses when it displays your app listing in search results and with the app description in the listing page.

50px \* 50px



# Environment-specific images

## Adobe Air

- **icon.png**

- **icon16x16.png**

- 16 px \* 16px
    - Program menu icon
    - Tray icon

- **icon32x32.png**

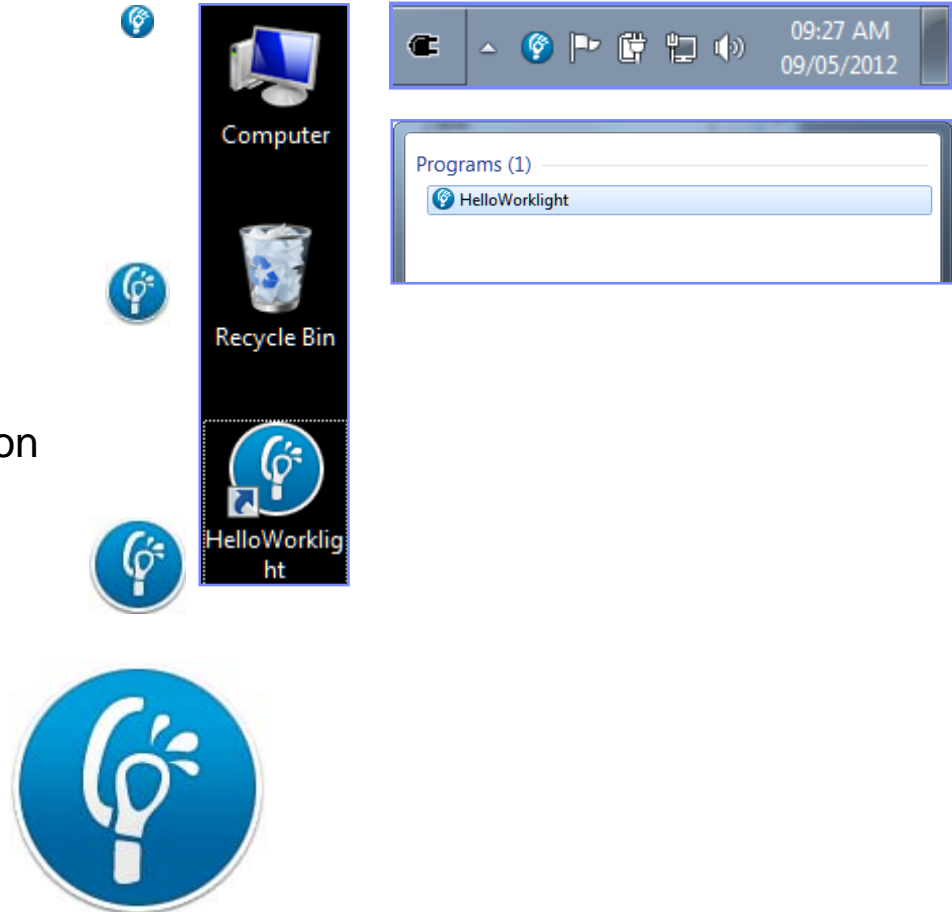
- 32px \* 32px
    - Standard Windows desktop icon
    - Taskbar icon

- **icon48x48.png**

- 48px \* 48px
    - Large Windows desktop icon

- **Icon128x128.png**

- 128px \* 128px





# Agenda

- Supported desktop environments
- Desktop development
  - Environment-specific APIs
  - Environment-specific images
  - **Apache Cordova**
- Debugging the application
- Deployment

# Apache Cordova

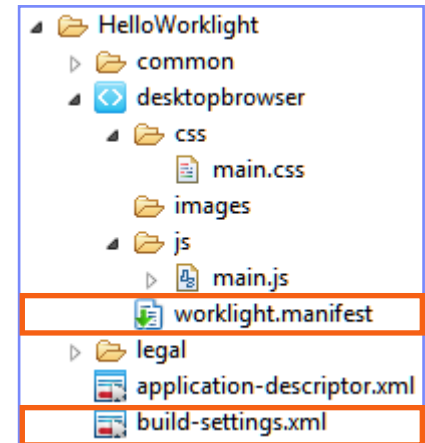
- You can use the Apache Cordova framework in Windows 8 applications to access the native elements of the device, such as contacts, geo-location services, media services, and accelerometer.
- For more information about Apache Cordova development, see the *Apache Cordova overview* training module.

# Agenda

- Supported desktop environments
- Desktop development
  - Environment-specific APIs
  - Environment-specific images
  - Apache Cordova
  - **Optimizing for Desktop Browser web page**
- Debugging the application
- Deployment

## Optimizing for Desktop Browser web page

- When you develop a Desktop Browser web page, it is also possible to optimize the application for better network performance.
- You can optimize your application by performing the two following actions:
  - Use Minification and Concatenation to reduce the number of files that are used within the application.
  - Use HTML 5 Application Cache.
- For more information about the IBM Worklight Cache Manifest, the Minification, and the Concatenation controls, see the topic *Optimizing IBM Worklight applications* in the IBM Worklight user documentation, at [http://pic.dhe.ibm.com/infocenter/wrklight/v6r1m0/topic/com.ibm.worklight.dev.doc/devref/c\\_optimizing\\_apps.html](http://pic.dhe.ibm.com/infocenter/wrklight/v6r1m0/topic/com.ibm.worklight.dev.doc/devref/c_optimizing_apps.html).

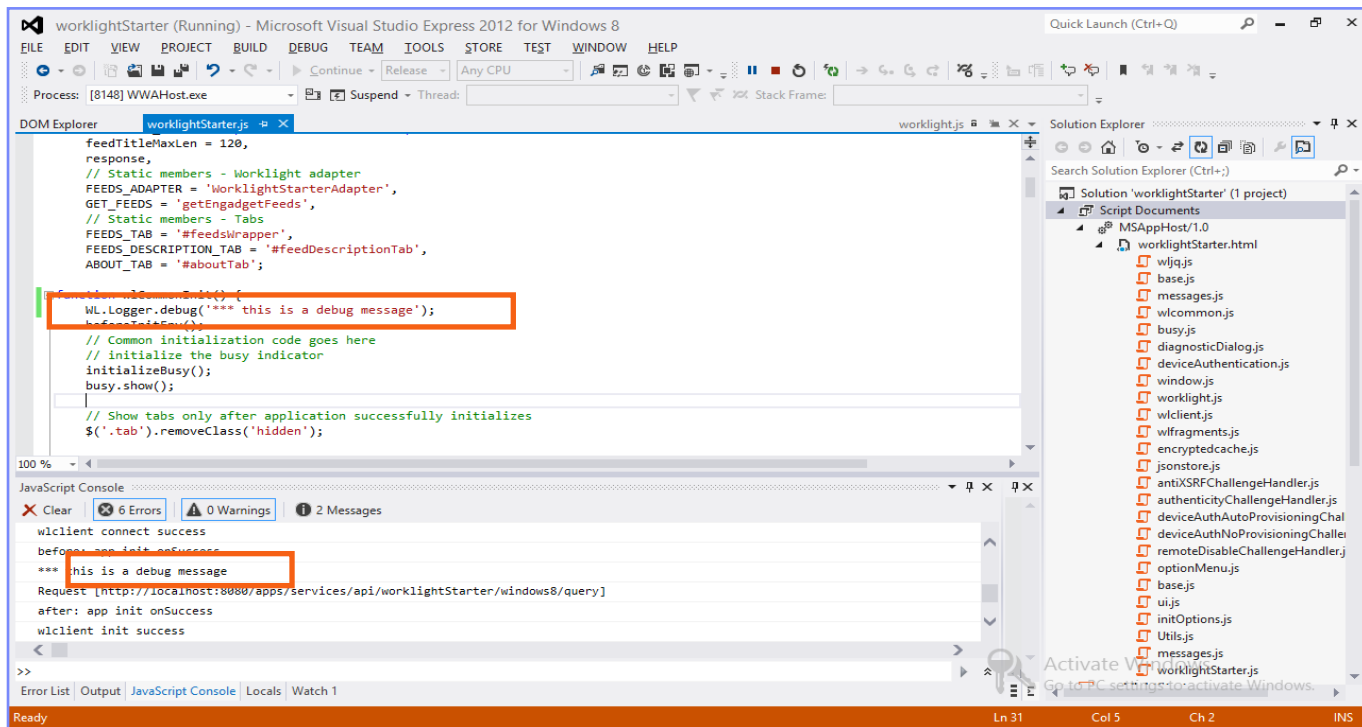


# Agenda

- Supported desktop environments
- Desktop development
  - Environment-specific APIs
  - Environment-specific images
  - Apache Cordova
  - Optimizing for Desktop Browser web page
- Debugging the application
- Deployment

# Debugging the application Windows 8

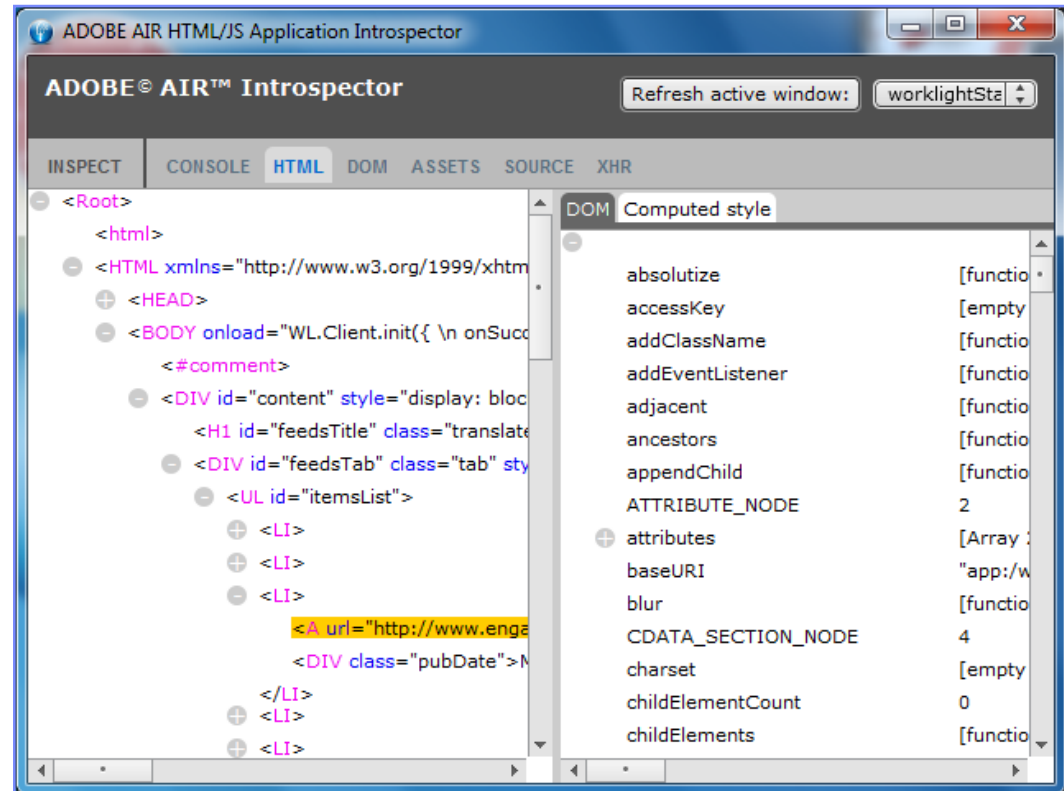
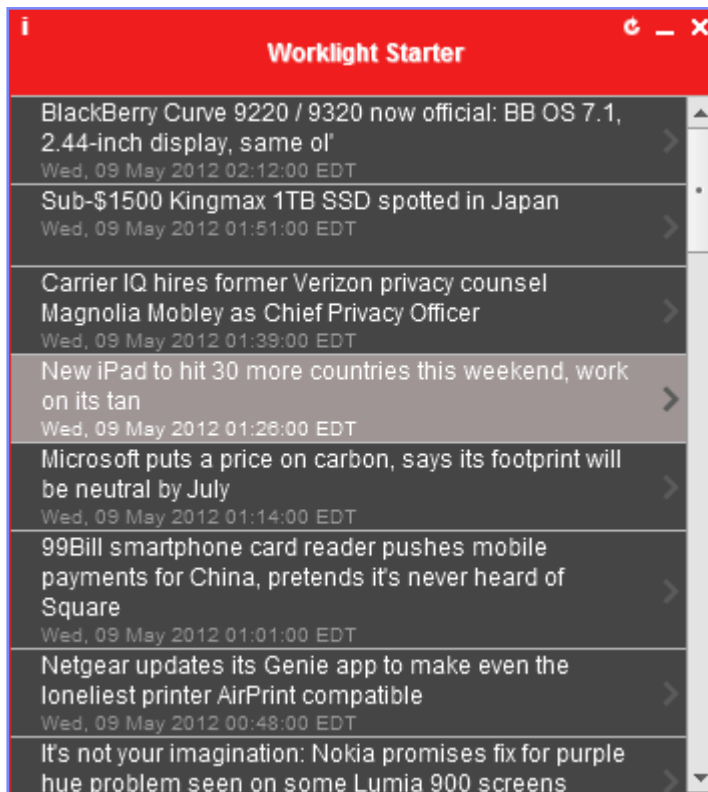
- Debug by using Microsoft Visual Studio Express 2012 for Windows 8.
- Use the IBM Worklight WL.Logger API.



# Debugging the application

## Adobe Air

- Debug by using the Adobe Air Introspector.
- Click **F12** to start a session.



## ***Debugging the application Desktop Browser web page***

- There are many web tools for debugging on various desktop browsers.
- For example:
  - **FireBug** extension for Firefox
  - **Developer tools** for Chrome  
(press CTRL+SHIFT+I to start)
  - **Developer tools** for Internet Explorer (press F12 to start)
  - **Dragonfly** for Opera
- For more information about debugging applications, see the *Debugging your applications* training module.



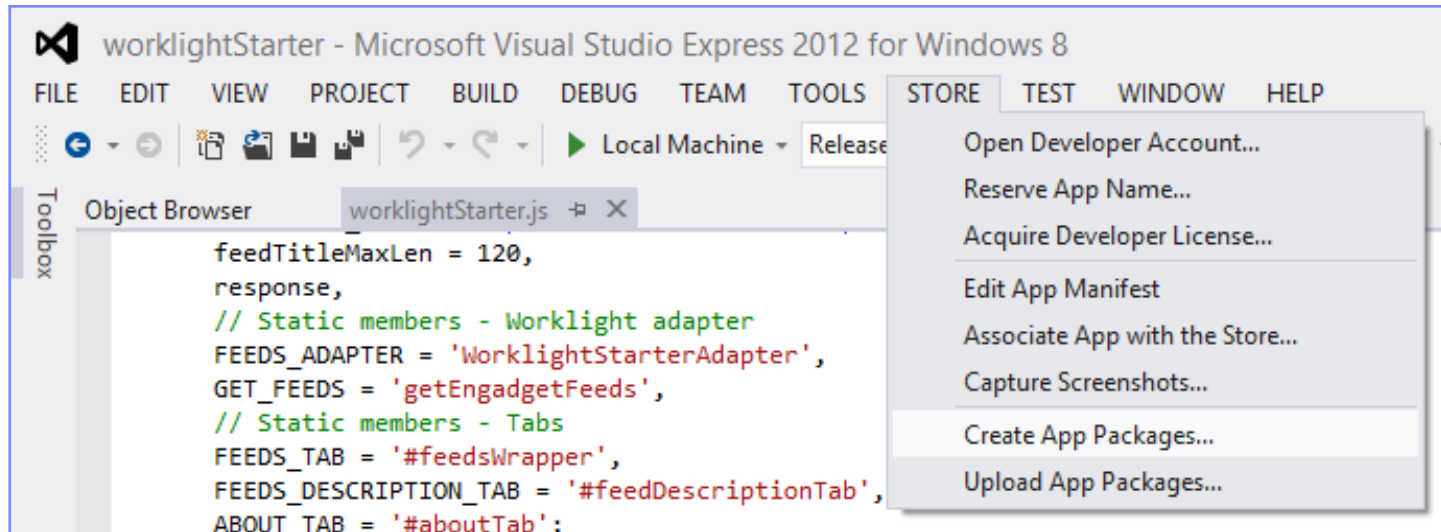
# Agenda

- Supported desktop environments
- Desktop development
  - Environment-specific APIs
  - Environment-specific images
  - Apache Cordova
- Debugging the application
- Deployment

# Deployment

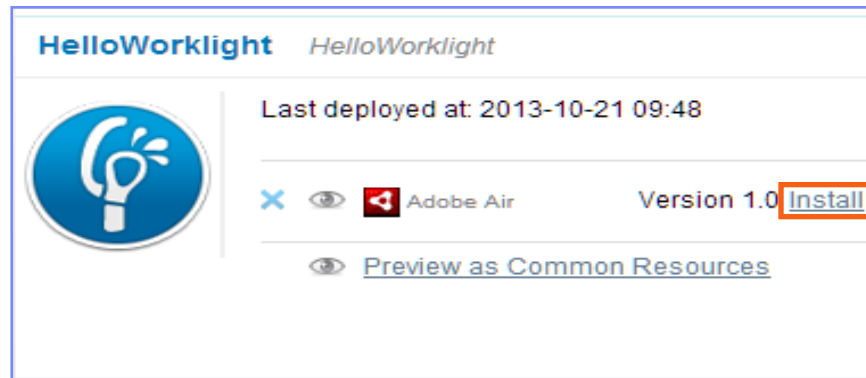
## Windows 8

Use Microsoft Visual Studio Express 2012 for Windows 8 to create App Packages.



## Deployment Adobe Air

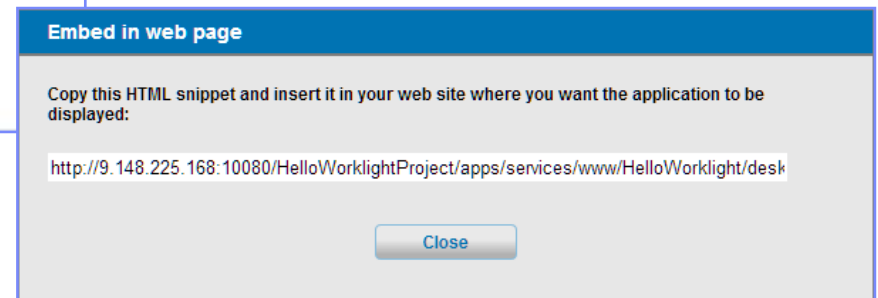
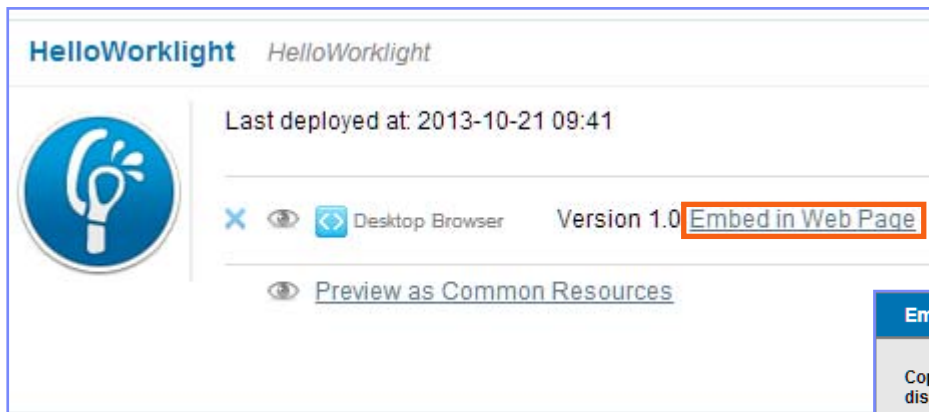
- Use the Worklight Console to get the Adobe Air package.
- When you click the **Install** link, an `.exe` file is downloaded.
- This file is the Adobe Air Installer that installs the application on the PC.



# Deployment

## Desktop Browser web page

- The Desktop Browser web page must be embedded in the website code to be used.
- To get the URL of the application, click the **Embed in Web Page** link that is next to the **Desktop Browser** icon.
- Copy the URL from the pop-up window and embed it in your HTML.



# Notices

- Permission for the use of these publications is granted subject to these terms and conditions.
- This information was developed for products and services offered in the U.S.A.
- IBM may not offer the products, services, or features discussed in this document in other countries. Consult your local IBM representative for information on the products and services currently available in your area. Any reference to an IBM product, program, or service is not intended to state or imply that only that IBM product, program, or service may be used. Any functionally equivalent product, program, or service that does not infringe any IBM intellectual property right may be used instead. However, it is the user's responsibility to evaluate and verify the operation of any non-IBM product, program, or service.
- IBM may have patents or pending patent applications covering subject matter described in this document. The furnishing of this document does not grant you any license to these patents. You can send license inquiries, in writing, to:
  - IBM Director of Licensing  
IBM Corporation  
North Castle Drive  
Armonk, NY 10504-1785  
U.S.A.
- For license inquiries regarding double-byte character set (DBCS) information, contact the IBM Intellectual Property Department in your country or send inquiries, in writing, to:
  - Intellectual Property Licensing  
Legal and Intellectual Property Law  
IBM Japan Ltd.  
1623-14, Shimotsuruma, Yamato-shi  
Kanagawa 242-8502 Japan
- **The following paragraph does not apply to the United Kingdom or any other country where such provisions are inconsistent with local law:** INTERNATIONAL BUSINESS MACHINES CORPORATION PROVIDES THIS PUBLICATION "AS IS" WITHOUT WARRANTY OF ANY KIND, EITHER EXPRESS OR IMPLIED, INCLUDING, BUT NOT LIMITED TO, THE IMPLIED WARRANTIES OF NON-INFRINGEMENT, MERCHANTABILITY OR FITNESS FOR A PARTICULAR PURPOSE. Some states do not allow disclaimer of express or implied warranties in certain transactions, therefore, this statement may not apply to you.
- This information could include technical inaccuracies or typographical errors. Changes are periodically made to the information herein; these changes will be incorporated in new editions of the publication. IBM may make improvements and/or changes in the product(s) and/or the program(s) described in this publication at any time without notice.
- Any references in this information to non-IBM Web sites are provided for convenience only and do not in any manner serve as an endorsement of those Web sites. The materials at those Web sites are not part of the materials for this IBM product and use of those Web sites is at your own risk.
- IBM may use or distribute any of the information you supply in any way it believes appropriate without incurring any obligation to you.
- Licensees of this program who wish to have information about it for the purpose of enabling: (i) the exchange of information between independently created programs and other programs (including this one) and (ii) the mutual use of the information which has been exchanged, should contact:
  - IBM Corporation  
Dept F6, Bldg 1  
294 Route 100  
Somers NY 10589-3216  
USA

- Such information may be available, subject to appropriate terms and conditions, including in some cases, payment of a fee.
- The licensed program described in this document and all licensed material available for it are provided by IBM under terms of the IBM Customer Agreement, IBM International Program License Agreement or any equivalent agreement between us.
- Information concerning non-IBM products was obtained from the suppliers of those products, their published announcements or other publicly available sources. IBM has not tested those products and cannot confirm the accuracy of performance, compatibility or any other claims related to non-IBM products. Questions on the capabilities of non-IBM products should be addressed to the suppliers of those products.

## COPYRIGHT LICENSE:

- This information contains sample application programs in source language, which illustrate programming techniques on various operating platforms. You may copy, modify, and distribute these sample programs in any form without payment to IBM, for the purposes of developing, using, marketing or distributing application programs conforming to the application programming interface for the operating platform for which the sample programs are written. These examples have not been thoroughly tested under all conditions. IBM, therefore, cannot guarantee or imply reliability, serviceability, or function of these programs.
- Each copy or any portion of these sample programs or any derivative work, must include a copyright notice as follows:
  - © (your company name) (year). Portions of this code are derived from IBM Corp. Sample Programs.  
© Copyright IBM Corp. \_enter the year or years\_. All rights reserved.

## Privacy Policy Considerations

- IBM Software products, including software as a service solutions, ("Software Offerings") may use cookies or other technologies to collect product usage information, to help improve the end user experience, to tailor interactions with the end user or for other purposes. In many cases no personally identifiable information is collected by the Software Offerings. Some of our Software Offerings can help enable you to collect personally identifiable information. If this Software Offering uses cookies to collect personally identifiable information, specific information about this offering's use of cookies is set forth below.
- Depending upon the configurations deployed, this Software Offering may use session cookies that collect session information (generated by the application server). These cookies contain no personally identifiable information and are required for session management. Additionally, persistent cookies may be randomly generated to recognize and manage anonymous users. These cookies also contain no personally identifiable information and are required.
- If the configurations deployed for this Software Offering provide you as customer the ability to collect personally identifiable information from end users via cookies and other technologies, you should seek your own legal advice about any laws applicable to such data collection, including any requirements for notice and consent. For more information about the use of various technologies, including cookies, for these purposes, see IBM's Privacy Policy at <http://www.ibm.com/privacy> and IBM's Online Privacy Statement at <http://www.ibm.com/privacy/details> the sections entitled "Cookies, Web Beacons and Other Technologies" and the "IBM Software Products and Software-as-a-Service Privacy Statement" at <http://www.ibm.com/software/info/product-privacy>.

# Support and comments

- For the entire IBM Worklight documentation set, training material and online forums where you can post questions, see the IBM website at:
  - <http://www.ibm.com/mobile-docs>
- **Support**
  - Software Subscription and Support (also referred to as Software Maintenance) is included with licenses purchased through Passport Advantage and Passport Advantage Express. For additional information about the International Passport Advantage Agreement and the IBM International Passport Advantage Express Agreement, visit the Passport Advantage website at:
    - <http://www.ibm.com/software/passportadvantage>
  - If you have a Software Subscription and Support in effect, IBM provides you assistance for your routine, short duration installation and usage (how-to) questions, and code-related questions. For additional details, consult your IBM Software Support Handbook at:
    - <http://www.ibm.com/support/handbook>
- **Comments**
  - We appreciate your comments about this publication. Please comment on specific errors or omissions, accuracy, organization, subject matter, or completeness of this document. The comments you send should pertain to only the information in this manual or product and the way in which the information is presented.
  - For technical questions and information about products and prices, please contact your IBM branch office, your IBM business partner, or your authorized remarketer.
  - When you send comments to IBM, you grant IBM a nonexclusive right to use or distribute your comments in any way it believes appropriate without incurring any obligation to you. IBM or any other organizations will only use the personal information that you supply to contact you about the issues that you state.
  - Thank you for your support.
  - Submit your comments in the IBM Worklight Developer Edition support community at:
    - <https://www.ibm.com/developerworks/mobile/worklight/connect.html>
  - If you would like a response from IBM, please provide the following information:
    - Name
    - Address
    - Company or Organization
    - Phone No.
    - Email address

***Thank You***

