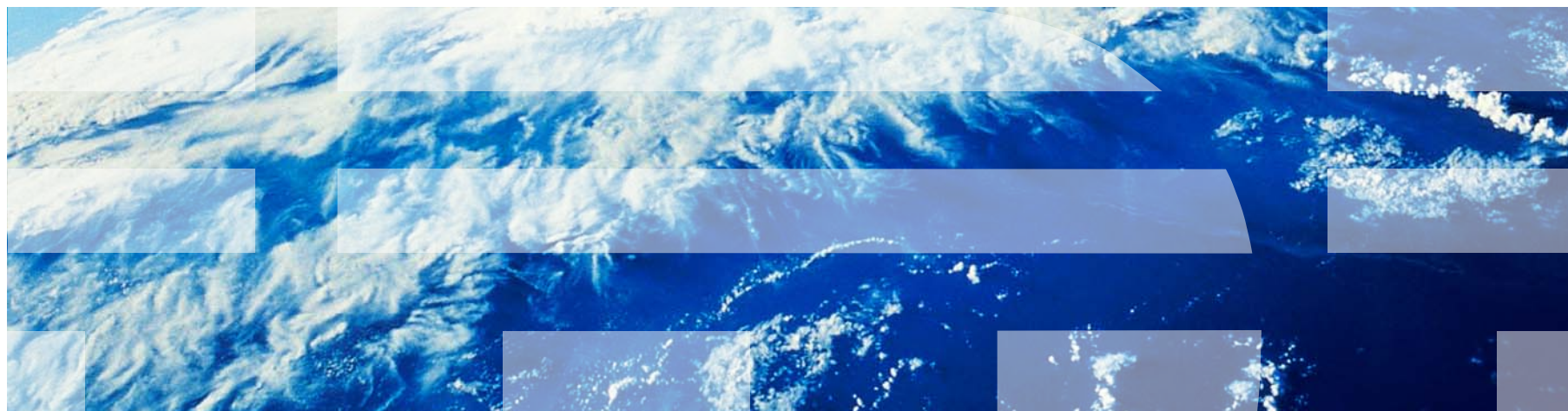


IBM Worklight V6.1.0 Getting Started

Container for advanced pages



Trademarks

- IBM, the IBM logo, ibm.com, and WebSphere are trademarks or registered trademarks of International Business Machines Corporation, registered in many jurisdictions worldwide. Worklight is a trademark or registered trademark of Worklight, an IBM Company. Other product and service names might be trademarks of IBM or other companies. A current list of IBM trademarks is available on the Web at “[Copyright and trademark information](#)” at www.ibm.com/legal/copytrade.shtml.
- Java and all Java-based trademarks and logos are trademarks or registered trademarks of Oracle and/or its affiliates.
- Other company products or service names may be trademarks or service marks of others.
- This document may not be reproduced in whole or in part without the prior written permission of IBM.

About IBM®

- See <http://www.ibm.com/ibm/us/en/>

Using this module and its companion sample

- This module and its companion sample are intended for use with either the IBM® Worklight® Consumer Edition or the IBM Worklight Enterprise Edition.
 - You cannot use as is the sample that is associated with this module with the free IBM Worklight Developer Edition. This sample provides a WAR file that demonstrates the remote load functionality in this module. This WAR file requires a servlet container, such as Apache Tomcat, WebSphere® Application Server Full Profile, or WebSphere Application Server Liberty Profile.

Agenda

- Background of IBM Mobile Conference application
 - Mobile views
 - Form-based authentication
- Migrating applications to IBM Worklight
 - Creating IBM Worklight projects and environments
 - Remote loading – Android
 - Remote loading – iOS
- Enhancing the IBM Mobile Conference application
 - IBM Worklight Client APIs
 - IBM Worklight integration
 - Encrypted cache
 - Camera support
- Proxy considerations

Background

- IBM Mobile Conference application
 - Mobile web application
 - Server programming model
 - JavaServer™ Pages (JSP)
 - JavaServer Pages Standard Tag Library (JSTL)
 - JavaServer Pages Expression Language (EL)
 - Client programming model
 - Dojox Mobile
 - Dojo Mobile Device Theming
 - Security
 - Container managed
 - Java™ Enterprise Edition (Java EE) form-based login



Mobile views

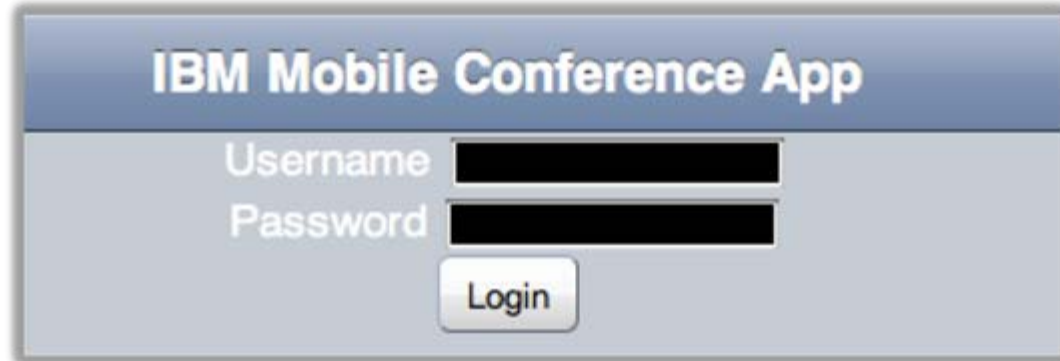
- Dojo provides mobile widgets that developers can use to quickly generate mobile views.

```
<div id="locations" dojoType="dojox.mobile.ScrollableView" selected="true">
  <h1 dojoType="dojox.mobile.Heading" label="Locations"></h1>
  <div class="list-category" dojoType="dojox.mobile.RoundRectCategory">USA</div>
  <ul dojoType="dojox.mobile.RoundRectList">
    <c:forEach var="location" items="${applicationScope.locationRegistryList['usa']}">
      <li dojoType="dojox.mobile.ListItem" class="mblVariableHeight"
        url="/confs.jsp?locationId=${location}"
        urlTarget="conferences" transition="slide">
        <div class="list-detail">
          <div>${locationMap[location].city}, ${locationMap[location].state}</div>
        </li>
      </c:forEach>
    </ul>
    .....
  </div>
```

- JSTL provides a simple API for iterating over lists to generate Dojox Mobile list items dynamically on the server.

Form-based authentication client

- The IBM Mobile Conference application requires users to be registered and authenticated with the enterprise that is hosting the application.
- The application is protected by a form-based login, by using a mobile web form that is contained within a Dojox Mobile view.



The screenshot shows the user interface of the IBM Mobile Conference App. At the top, there is a blue header with the text "IBM Mobile Conference App". Below the header, the form contains two input fields: "Username" and "Password", both of which are currently redacted with black boxes. Below these fields is a "Login" button.

```
<div dojoType="dojox.mobile.View">
  <c:set var="conferences" scope="session" value=""></c:set>
  <h1 style="text-align: center;" dojoType="dojox.mobile.Heading">
    IBM Mobile Conference App</h1>
  <form action="j_security_check" method="post" name="loginForm">
    <div class="logonClass">
      <div>
        <span>Username </span> <input id="username"
          dojoType="dojox.mobile.TextBox"
          name="j_username" />
      </div>
      <div>
        <span>Password </span> <input id="password"
          type="password" name="j_password"
          dojoType="dojox.mobile.TextBox"> </input>
      </div>
      <div style="text-align: center;">
        <input id="login" type="submit" class="mblButton" value="Login"/>
      </div>
    </div>
  </form>
</div>
```

Form-based authentication server

- The IBM Mobile Conference application is configured to use Java Enterprise Edition Role Support
 - White list or pattern-based URIs of secured resources
 - Support for logout in addition to Java Enterprise Edition standard logout functionality

```

<security-role>
  <role-name>tomcat</role-name>
</security-role>
<security-constraint>
  <display-name>SecurityConstraint</display-name>
  <web-resource-collection>
    <web-resource-name>Conference</web-resource-name>
    <url-pattern>/common/location.jsp</url-pattern>
    <url-pattern>/common/confjs.jsp</url-pattern>
    <url-pattern>/common/presenter.jsp</url-pattern>
    <url-pattern>/common/sessions.jsp</url-pattern>
  </web-resource-collection>
  <auth-constraint>
    <role-name>tomcat</role-name>
  </auth-constraint>
</security-constraint>
<login-config>
  <auth-method>FORM</auth-method>
  <form-login-config>
    <form-login-page>/common/login.jsp</form-login-page>
    <form-error-page>/common/logonError.jsp</form-error-page>
  </form-login-config>
</login-config>
</web-app>

```

```

<div style="position: relative; float: left;">
  <form method="post" action="ibm_security_logout" name="Logout">
    <span data-dojo-type="dojox.mobile.ToolBarButton"
      data-dojo-props='onClick:function(){
        window.location="Logout";
        if(window.location.port == 9080){
          // For liberty logout...
          document.forms["Logout"].submit();
        }
      }'>
      transition:"slide">Logout</span>
    <input type="hidden" name="LogoutExitPage" value="/">
  </form>
</div>
</div>
</div>

```


Simplified user registry and role configuration

Liberty server.xml

```

<server description="new server">
  <!-- Enable features -->
  <featureManager>
    <feature>jsp-2.2</feature>
    <feature>servlet-3.0</feature>
    <feature>localConnector-1.0</feature>
    <feature>appSecurity-1.0</feature>
  </featureManager>

  <httpEndpoint host="9.181.110.137" httpPort="9080"
    httpsPort="9443" id="defaultHttpEndpoint">
  </httpEndpoint>

  <applicationMonitor updateTrigger="mbean"/>

  <basicRegistry id="basic" realm="liberty">
    <user name="demo" password="demo"/>
    <group name="test">
      <member name="demo"/>
    </group>
  </basicRegistry>

  <application context-root="conference"
    id="module_45_2_ContainerForAdvancedPagesWar"
    location="module_45_2_ContainerForAdvancedPagesWar.war"
    name="module_45_2_ContainerForAdvancedPagesWar" type="war">
    <application-bnd>
      <security-role name="liberty">
        <group name="test" />
      </security-role>
    </application-bnd>
  </application>
</server>

```

Tomcat server.xml

```

<GlobalNamingResources>
  <!-- Editable user database that can also be used by
  <!-- UserDatabaseRealm to authenticate users
  -->
  <Resource auth="Container" description="User database that can be updated and saved"
    factory="org.apache.catalina.users.MemoryUserDatabaseFactory" name="UserDatabase"
    pathname="conf/tomcat-users.xml" type="org.apache.catalina.UserDatabase"/>
</GlobalNamingResources>

```

Add role and user in tomcat-users.xml

```

<role rolename="tomcat"/>
<user password="tomcat" roles="tomcat" username="tomcat"/>

```

<http://tomcat.apache.org/tomcat-6.0-doc/realms-howto.html>

Agenda

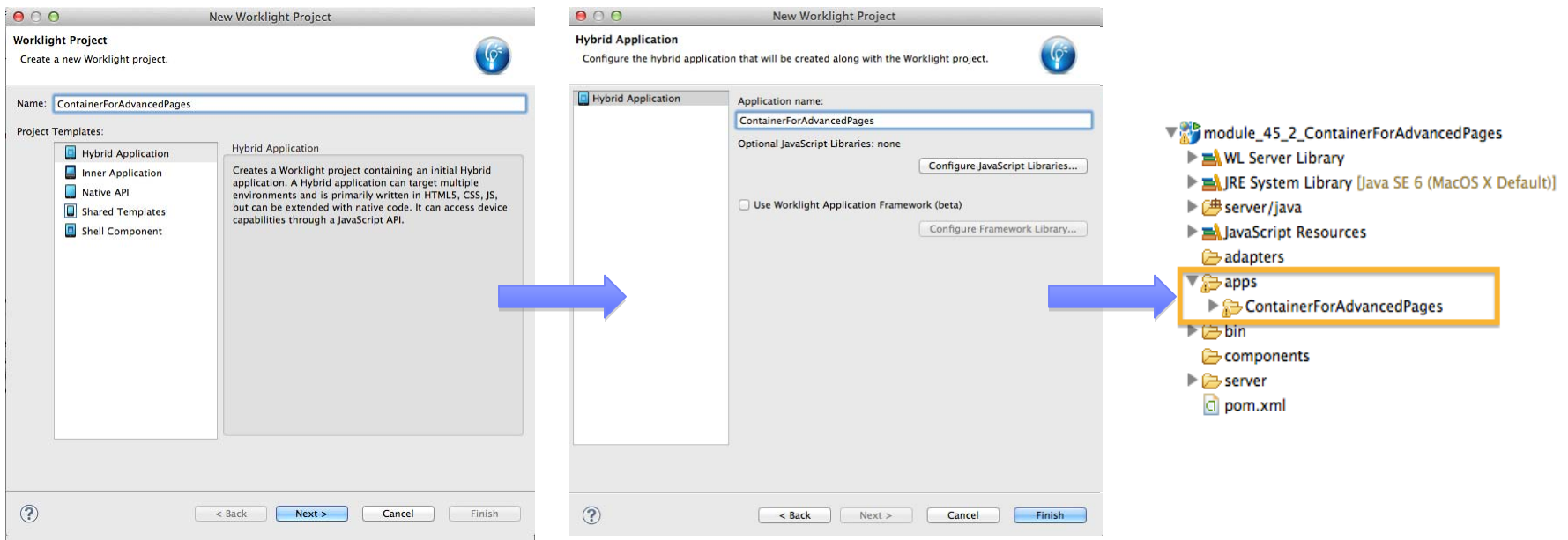
- Background of IBM Mobile Conference application
 - Mobile views
 - Form-based authentication
- Migrating applications to IBM Worklight
 - Creating IBM Worklight projects and environments
 - Remote loading – Android
 - Remote loading – iOS
- Enhancing the IBM Mobile Conference application
 - IBM Worklight Client APIs
 - IBM Worklight integration
 - Encrypted cache
 - Camera support
- Proxy considerations

Migrating applications to IBM Worklight®

- By using mobile web technology, you can deploy applications to the widest variety of devices.
- The presence of application stores (for example: Apple iTunes and Google Play) added a dimension where the hosting and marketing of these applications made broader-reaching applications less relevant.
- IBM Worklight provides the solution to building cross platform applications that can be distributed through the application stores by using the hybrid application programming model.
- In the hybrid model, developers typically package the application HTML, CSS, and JavaScript code as part of the application that is deployed to the application store.
- In this module, you see the remote loading of dynamic content capability, where the HTML, CSS, and JavaScript code is hosted externally from the natively packaged hybrid.

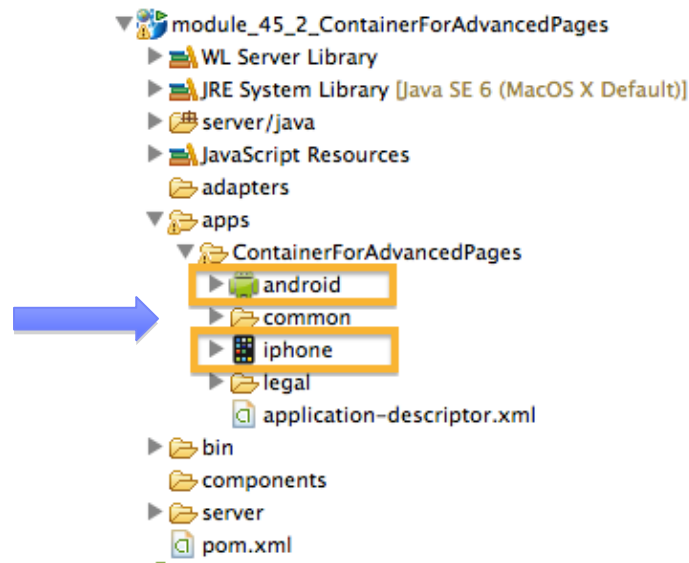
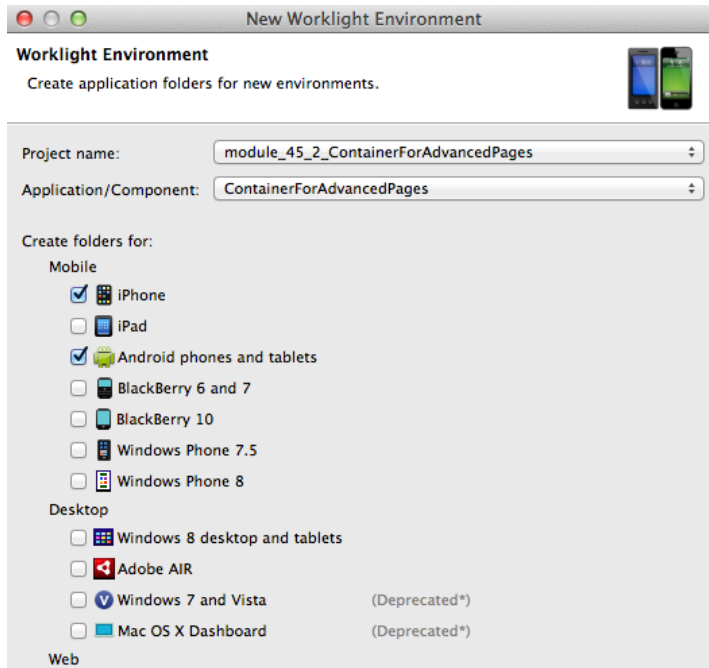
Creating IBM Worklight applications

- A project and applications are created by using the IBM Worklight Project wizard.
- A project might host multiple applications.
 - However, in this module, you use only one app: ContainerForAdvancedPages.



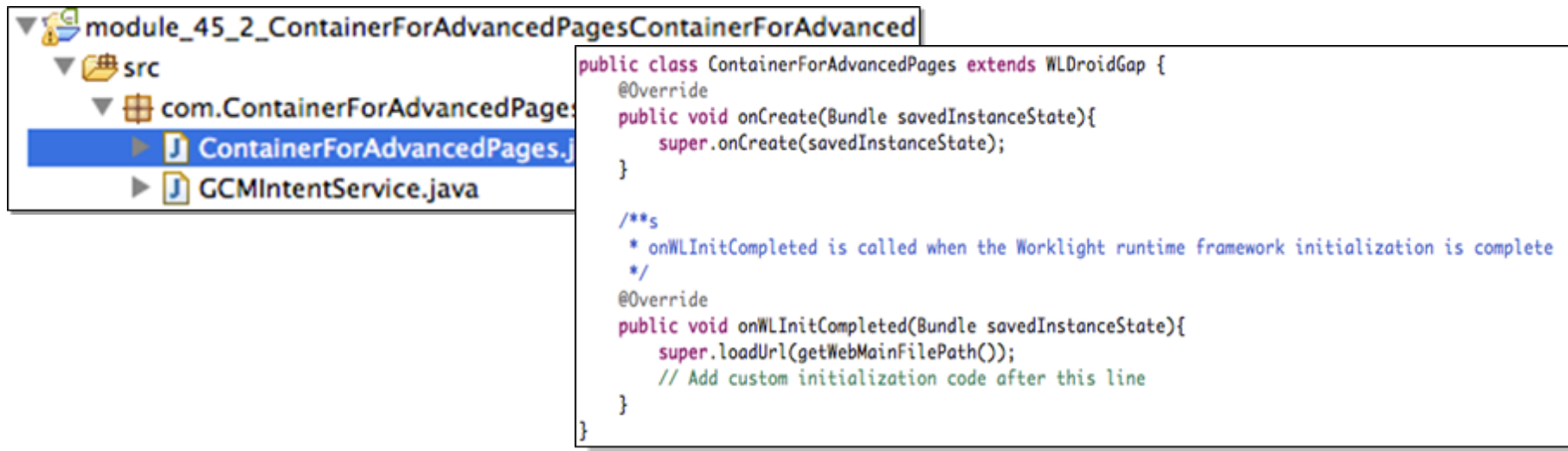
Worklight environments

- IBM Worklight provides a model for organizing the application project structure for each targeted environment (for example, Android, iPhone, iPad).
- Because the target environments are known, both the iPhone and Android environments are selected as part of the Worklight Environment wizard.



Worklight Android environment

- When the Worklight Environment wizard process completes, template files are generated and included in the project.
- Assumptions:
 - The main web resources are packaged with the application (getWebMainFilePath() assumes a local file).
 - The initial HTML page is configured to be loaded when the Android Application initially starts.



The screenshot shows an IDE interface. On the left, a project tree is visible with the following structure:

- module_45_2_ContainerForAdvancedPagesContainerForAdvanced
 - src
 - com.ContainerForAdvancedPage:
 - ContainerForAdvancedPages.j
 - GCMIntentService.java

The file `ContainerForAdvancedPages.j` is selected. On the right, the code editor displays the following Java code snippet:

```
public class ContainerForAdvancedPages extends WLDroidGap {
    @Override
    public void onCreate(Bundle savedInstanceState){
        super.onCreate(savedInstanceState);
    }

    /**
     * onWLInitCompleted is called when the Worklight runtime framework initialization is complete
     */
    @Override
    public void onWLInitCompleted(Bundle savedInstanceState){
        super.loadUrl(getWebMainFilePath());
        // Add custom initialization code after this line
    }
}
```

Remote loading in Android

- In the previous section, the default instance of WLDroidGap is attempting to load a local resource.
- Enabling remote loading of resources requires a small modification to the application to load the appropriate resource.
- As part of configuring the IBM Worklight application, you can specify the Worklight root URL, which is where the Worklight Server is hosted.
- IBM Worklight provides an API for obtaining elements of this root URL such as scheme, host, and port, through the `wlclient.properties` resource that is packaged within the Android application.
- The Remote Load Application uses this API as part of the remote loading.
 - Note: Due to same domain restrictions of the browser (web view), the remotely loaded application and Worklight Server must either be co-located on same host and port, or have a common proxy host and port.

Remote load Android code snippet

```
*wlclient.properties
wlServerProtocol = http
wlServerHost = 9.181.110.43
wlServerPort = 9080
wlServerContext = /
wlAppId = module_45_2_ContainerForAdvancedPages
wlAppVersion = 1.0
GcmSenderId =
enableSettings = true
testWebResourcesChecksum = false
ignoredFileExtensions =
```

- Developers can use the resource `wlclient.properties` to update the app properties when the application transitions from development to test to production.

- Remote loading uses the `wlclient.properties` file to denote where to remotely load web resources from.

```
*ContainerForAdvancedPages.java
package com.ContainerForAdvancedPages;

import android.os.Bundle;

public class ContainerForAdvancedPages extends WLDroidGap {
    @Override
    public void onWlInitCompleted(Bundle savedInstanceState) {
        // Additional initialization code from onCreate() was moved here
        CookieSyncManager.createInstance(appView.getContext());
        CookieManager.getInstance().removeSessionCookie();
        String resourceHome = getWlConfig().getProtocol() + "://" + getWlConfig().getHost();
        String port = getWlConfig().getPort();
        //If port is 80, do not need use this port, otherwise need add port.
        if(Integer.parseInt(port)!=80){
            resourceHome+=":"+port;
        }
        loadUrl(resourceHome + "/conference", false); // do not clear cache
        appView.setBackgroundColor(Color.WHITE); // set background to white to ensure errors display
    }

    @Override
    public void onCreate(Bundle savedInstanceState) {
        super.onCreate(savedInstanceState);
        // Additional initialization code was moved to onWlInitCompleted()
    }

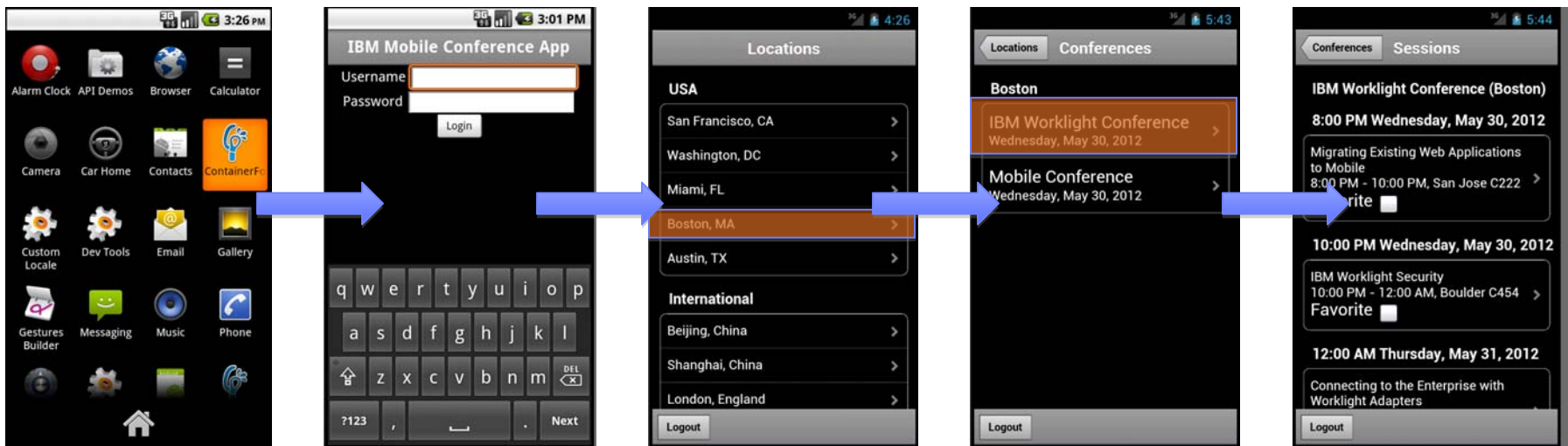
    public void loadUrl(String url) {
        loadUrl(url, false); // default is false
    }
}
```


Remote load Android code snippet

- Before running the Worklight application, the WAR file of the conference project must be deployed to the server.
 - For example, in the development environment, right-click the **conference project > Run As > Run on server** (a dialog opens)
 - In the dialog, choose **Worklight Development Server**.

Remote load Android in action

- After the application is installed, click the icon to start the application and authenticate.
- Each view for the IBM Mobile Conference app is loaded through Ajax XHR where each view is generated by the JSP responsible for each distinct view.
- Click the right arrow to transition between the various views.



Worklight iOS environment

- Ensure that the `OpenAllWhitelistURLsInWebView` setting is set to **true** in the `config.xml` file
 - If this setting is not set to **true**, non-local HTML files are loaded in Safari instead of in the WebView of the application.
- Cordova does not allow the specification of a remote URL on startup: you must tell the WebView to load your remote URL.
- Override this method in your application delegate class (**module452ContainerForAdvancedPages.m**):

```
- (BOOL)application:(UIApplication *)application didFinishLaunchingWithOptions:(NSDictionary *)launchOptions
{
    BOOL ret = [super application:application didFinishLaunchingWithOptions:launchOptions];
    [[NSNotificationCenter defaultCenter] addObserver:self selector:@selector(didFinishWLNativeInit:)
        name:@"didFinishWLNativeInit" object:nil];
    return ret;
}

// Use this function to refer to webview
-(void) didFinishWLNativeInit:(NSNotification *)notification
{
    NSURL* remoteURL = [NSURL URLWithString:[self getRemoteURL]];
    NSURLRequest* request = [NSURLRequest requestWithURL:remoteURL];
    [self.viewController.webView loadRequest:request];
}
```

```
//Ensure all required keys are in the plist
if(proto == nil || host == nil || port == nil){
    [NSException raise:@"[Remote Load Initialization Error]" format:@"host, port and protocol are
        all required keys in worklight.plist"];
}
NSString* baseURL = [NSString stringWithFormat:@"%s://%s:%s", proto, host, port, @"/conference"];
return baseURL;
```

Remote load iOS in action



Agenda

- Background of IBM Mobile Conference application
 - Mobile views
 - Form-based authentication
- Migrating applications to IBM Worklight
 - Creating IBM Worklight projects and environments
 - Remote loading – Android
 - Remote loading – iOS
- Enhancing the IBM Mobile Conference application
 - IBM Worklight Client APIs
 - IBM Worklight integration
 - Encrypted cache
 - Camera support
- Proxy considerations

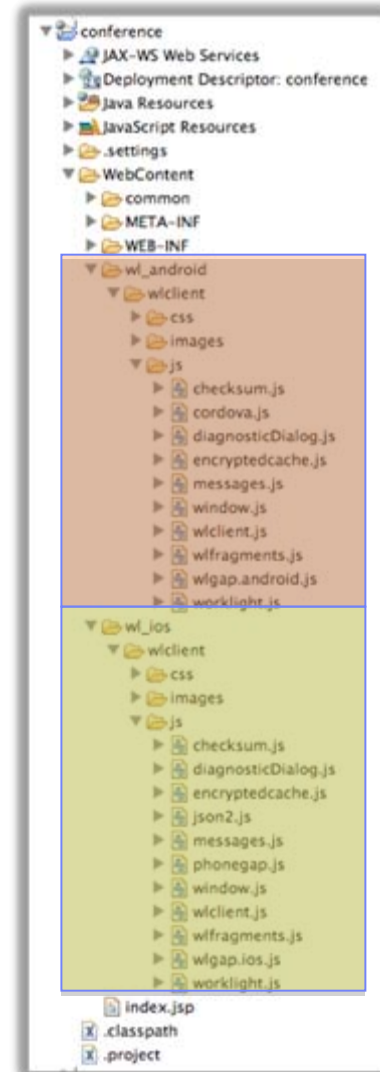
Extending IBM Mobile Conference app to IBM Worklight

- IBM Worklight provides client libraries for hybrid application development.
- Although the APIs are platform-neutral, there are often platform-specific implementations that are backing those APIs.
- Because the conference app is served remotely, these client side libraries must be packaged with the conference app.
- Each platform-specific implementation is in its own folder structure in the web application.

```

<c:choose>
  <c:when test="${fn:contains(iOSClient, 'Android')}">
    <link rel="stylesheet" type="text/css"
          href="dojox/mobile/themes/android/android.css"></link>
  </c:when>
  <c:otherwise>
    <link rel="stylesheet" type="text/css"
          href="dojox/mobile/themes/iphone/iphone.css"></link>
  </c:otherwise>
</c:choose>
</head>

```



IBM Worklight integration

- When the IBM Mobile Conference application completes the authentication process, the mobile device client initializes the device with the server by using `WL.Client.init()`.
- `WL.Client.init` provides a flexible model for application integrity validation, application updates, and other features.

```

WL.StaticAppProps = {
  "APP_DISPLAY_NAME": "ContainerForAdvancedPages",
  "APP_SERVICES_URL": "\apps\servicesV",
  "APP_VERSION": "1.0",
  "ENVIRONMENT": "android",
  "LOGIN_DISPLAY_TYPE": "embedded",
  "WORKLIGHT_ROOT_URL": "\apps\services\Vapi\ContainerForAdvancedPages\androidV"
};

```

```

function(ready, mobile, parser, database, registry, query, photo) {
  function success(){
    console.info('WL init success...');
  }

  function failure(){
    console.info('WL init failure...');
  }

  ready(function(){
    parser.parse();
    WL.Client.init({onSuccess:success, connectOnStartup:false, showLogger:true});
  });

  photo.init();

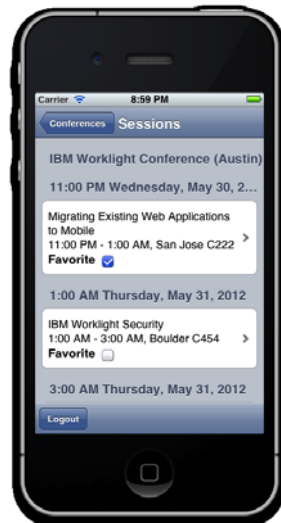
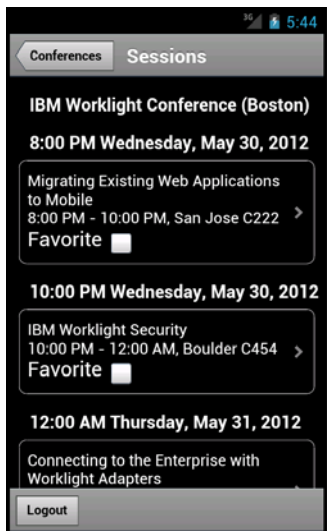
  var presentersView = registry.byId("presenters");
  dojo.connect(presentersView, "onBeforeTransitionIn", null,

```

Encrypted cache

- The Encrypted Offline Cache (EOC) API is used for securely storing data by using HTML5 local cache.
- The Conference app uses EOC to save a list of favorite sessions in a secure way.

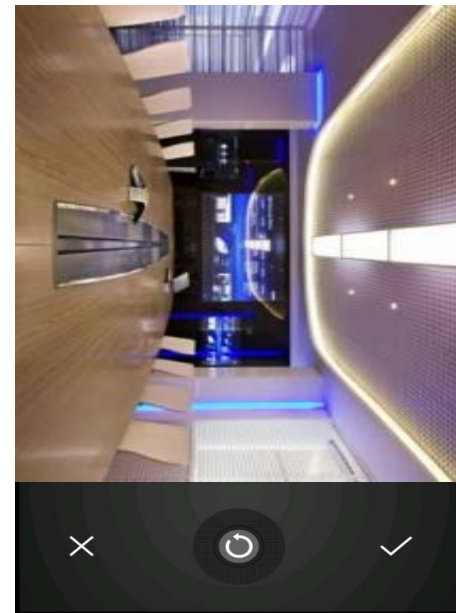
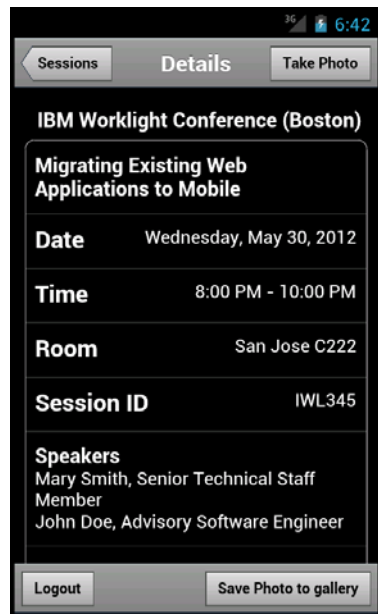
```
function saveToCache(key, value) {
    if (isEOCOpen == false) {
        __openEOC(function() {
            __writeEOC(key, value, function() {
            });
        });
    } else {
        __writeEOC(key, value, function() {
        }, function() {
            alert('Unable to write to Encrypted Offline Cache');
        });
    }
}
```



```
function __writeEOC(mykey, mydata, callback) {
    WL.EncryptedCache.write(mykey, mydata, function() {
        callback();
    }, function() {
        alert('an error occurred writing to the EOC');
    });
}
```


Camera support

- Use the IBM Worklight Client API to extend the application to take photos of the conference.
- The application has a social aspect, where users can view photos from the other conference attendees.



Agenda

- Background of IBM Mobile Conference application
 - Mobile views
 - Form-based authentication
- Migrating applications to IBM Worklight
 - Creating IBM Worklight projects and environments
 - Remote loading – Android
 - Remote loading – iOS
- Enhancing the IBM Mobile Conference application
 - IBM Worklight Client APIs
 - IBM Worklight integration
 - Encrypted cache
 - Camera support
- Proxy considerations

Proxy considerations

- IBM Worklight is compatible with most known proxy solutions.
- WebSphere HTTP Plug-in support
 - Requires single shared `plugin-cfg.xml` for routing requests to both Worklight Server and the WebSphere Application Server that is hosting the IBM Mobile Conference App
- Apache Web Server support
 - Requires mod proxy module to be loaded by web server

```
<IfModule mod_proxy.c>
<Proxy *>
    Order deny,allow
    Allow from all
</Proxy>
## ibm mobile conference app
ProxyPass /conference http://${hostname1}:7080/conference
ProxyPassReverse /conference http://${hostname1}:7080/conference
## Worklight services
ProxyPass /apps http://${hostname2}:8080/apps
ProxyPassReverse /apps http://${hostname2}:8080/apps
</IfModule>
```

Notices

- Permission for the use of these publications is granted subject to these terms and conditions.
- This information was developed for products and services offered in the U.S.A.
- IBM may not offer the products, services, or features discussed in this document in other countries. Consult your local IBM representative for information on the products and services currently available in your area. Any reference to an IBM product, program, or service is not intended to state or imply that only that IBM product, program, or service may be used. Any functionally equivalent product, program, or service that does not infringe any IBM intellectual property right may be used instead. However, it is the user's responsibility to evaluate and verify the operation of any non-IBM product, program, or service.
- IBM may have patents or pending patent applications covering subject matter described in this document. The furnishing of this document does not grant you any license to these patents. You can send license inquiries, in writing, to:
 - IBM Director of Licensing
IBM Corporation
North Castle Drive
Armonk, NY 10504-1785
U.S.A.
- For license inquiries regarding double-byte character set (DBCS) information, contact the IBM Intellectual Property Department in your country or send inquiries, in writing, to:
 - Intellectual Property Licensing
Legal and Intellectual Property Law
IBM Japan Ltd.
1623-14, Shimotsuruma, Yamato-shi
Kanagawa 242-8502 Japan
- **The following paragraph does not apply to the United Kingdom or any other country where such provisions are inconsistent with local law:** INTERNATIONAL BUSINESS MACHINES CORPORATION PROVIDES THIS PUBLICATION "AS IS" WITHOUT WARRANTY OF ANY KIND, EITHER EXPRESS OR IMPLIED, INCLUDING, BUT NOT LIMITED TO, THE IMPLIED WARRANTIES OF NON-INFRINGEMENT, MERCHANTABILITY OR FITNESS FOR A PARTICULAR PURPOSE. Some states do not allow disclaimer of express or implied warranties in certain transactions, therefore, this statement may not apply to you.
- This information could include technical inaccuracies or typographical errors. Changes are periodically made to the information herein; these changes will be incorporated in new editions of the publication. IBM may make improvements and/or changes in the product(s) and/or the program(s) described in this publication at any time without notice.
- Any references in this information to non-IBM Web sites are provided for convenience only and do not in any manner serve as an endorsement of those Web sites. The materials at those Web sites are not part of the materials for this IBM product and use of those Web sites is at your own risk.
- IBM may use or distribute any of the information you supply in any way it believes appropriate without incurring any obligation to you.
- Licensees of this program who wish to have information about it for the purpose of enabling: (i) the exchange of information between independently created programs and other programs (including this one) and (ii) the mutual use of the information which has been exchanged, should contact:
 - IBM Corporation
Dept F6, Bldg 1
294 Route 100
Somers NY 10589-3216
USA

- Such information may be available, subject to appropriate terms and conditions, including in some cases, payment of a fee.
- The licensed program described in this document and all licensed material available for it are provided by IBM under terms of the IBM Customer Agreement, IBM International Program License Agreement or any equivalent agreement between us.
- Information concerning non-IBM products was obtained from the suppliers of those products, their published announcements or other publicly available sources. IBM has not tested those products and cannot confirm the accuracy of performance, compatibility or any other claims related to non-IBM products. Questions on the capabilities of non-IBM products should be addressed to the suppliers of those products.

COPYRIGHT LICENSE:

- This information contains sample application programs in source language, which illustrate programming techniques on various operating platforms. You may copy, modify, and distribute these sample programs in any form without payment to IBM, for the purposes of developing, using, marketing or distributing application programs conforming to the application programming interface for the operating platform for which the sample programs are written. These examples have not been thoroughly tested under all conditions. IBM, therefore, cannot guarantee or imply reliability, serviceability, or function of these programs.
- Each copy or any portion of these sample programs or any derivative work, must include a copyright notice as follows:
 - © (your company name) (year). Portions of this code are derived from IBM Corp. Sample Programs.
© Copyright IBM Corp. _enter the year or years_. All rights reserved.

Privacy Policy Considerations

- IBM Software products, including software as a service solutions, ("Software Offerings") may use cookies or other technologies to collect product usage information, to help improve the end user experience, to tailor interactions with the end user or for other purposes. In many cases no personally identifiable information is collected by the Software Offerings. Some of our Software Offerings can help enable you to collect personally identifiable information. If this Software Offering uses cookies to collect personally identifiable information, specific information about this offering's use of cookies is set forth below.
- Depending upon the configurations deployed, this Software Offering may use session cookies that collect session information (generated by the application server). These cookies contain no personally identifiable information and are required for session management. Additionally, persistent cookies may be randomly generated to recognize and manage anonymous users. These cookies also contain no personally identifiable information and are required.
- If the configurations deployed for this Software Offering provide you as customer the ability to collect personally identifiable information from end users via cookies and other technologies, you should seek your own legal advice about any laws applicable to such data collection, including any requirements for notice and consent. For more information about the use of various technologies, including cookies, for these purposes, see IBM's Privacy Policy at <http://www.ibm.com/privacy> and IBM's Online Privacy Statement at <http://www.ibm.com/privacy/details> the sections entitled "Cookies, Web Beacons and Other Technologies" and the "IBM Software Products and Software-as-a-Service Privacy Statement" at <http://www.ibm.com/software/info/product-privacy>.

Support and comments

- For the entire IBM Worklight documentation set, training material and online forums where you can post questions, see the IBM website at:
 - <http://www.ibm.com/mobile-docs>
- **Support**
 - Software Subscription and Support (also referred to as Software Maintenance) is included with licenses purchased through Passport Advantage and Passport Advantage Express. For additional information about the International Passport Advantage Agreement and the IBM International Passport Advantage Express Agreement, visit the Passport Advantage website at:
 - <http://www.ibm.com/software/passportadvantage>
 - If you have a Software Subscription and Support in effect, IBM provides you assistance for your routine, short duration installation and usage (how-to) questions, and code-related questions. For additional details, consult your IBM Software Support Handbook at:
 - <http://www.ibm.com/support/handbook>
- **Comments**
 - We appreciate your comments about this publication. Please comment on specific errors or omissions, accuracy, organization, subject matter, or completeness of this document. The comments you send should pertain to only the information in this manual or product and the way in which the information is presented.
 - For technical questions and information about products and prices, please contact your IBM branch office, your IBM business partner, or your authorized remarketer.
 - When you send comments to IBM, you grant IBM a nonexclusive right to use or distribute your comments in any way it believes appropriate without incurring any obligation to you. IBM or any other organizations will only use the personal information that you supply to contact you about the issues that you state.
 - Thank you for your support.
 - Submit your comments in the IBM Worklight Developer Edition support community at:
 - <https://www.ibm.com/developerworks/mobile/worklight/connect.html>
 - If you would like a response from IBM, please provide the following information:
 - Name
 - Address
 - Company or Organization
 - Phone No.
 - Email address

Thank You

