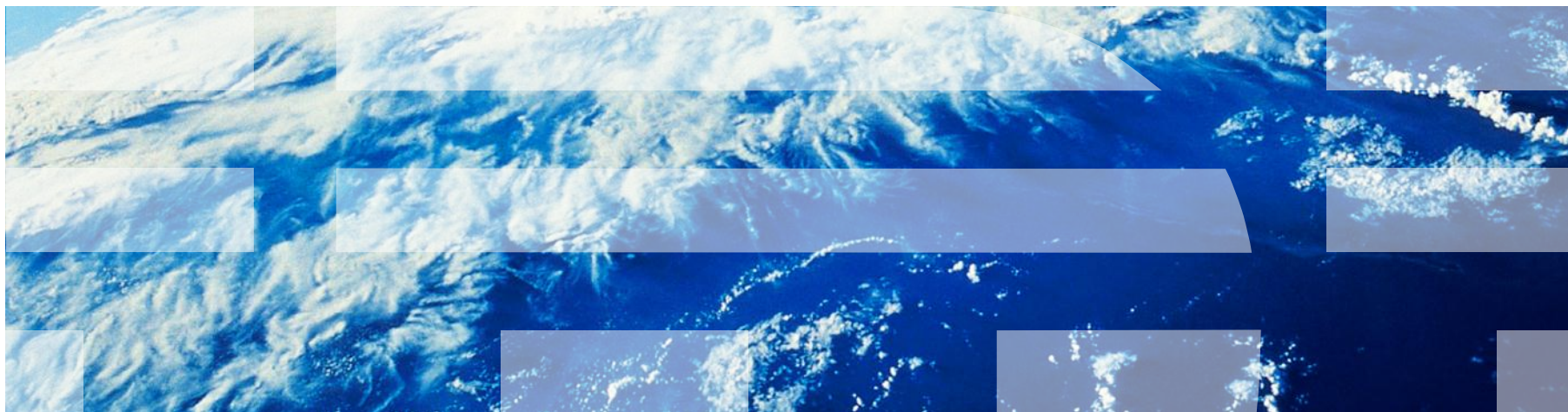


# ***IBM Worklight Foundation V6.2.0 Getting Started***

## **Enabling translation**



## ***Trademarks***

- IBM, the IBM logo, ibm.com, and Worklight are trademarks or registered trademarks of International Business Machines Corporation, registered in many jurisdictions worldwide. Other product and service names might be trademarks of IBM or other companies. A current list of IBM trademarks is available on the Web at “[Copyright and trademark information](http://www.ibm.com/legal/copytrade.shtml)” at [www.ibm.com/legal/copytrade.shtml](http://www.ibm.com/legal/copytrade.shtml).
- Java and all Java-based trademarks and logos are trademarks or registered trademarks of Oracle and/or its affiliates.
- Other company products or service names may be trademarks or service marks of others.
- This document may not be reproduced in whole or in part without the prior written permission of IBM.

## ***About IBM®***

- See <http://www.ibm.com/ibm/us/en/>

# *Agenda*

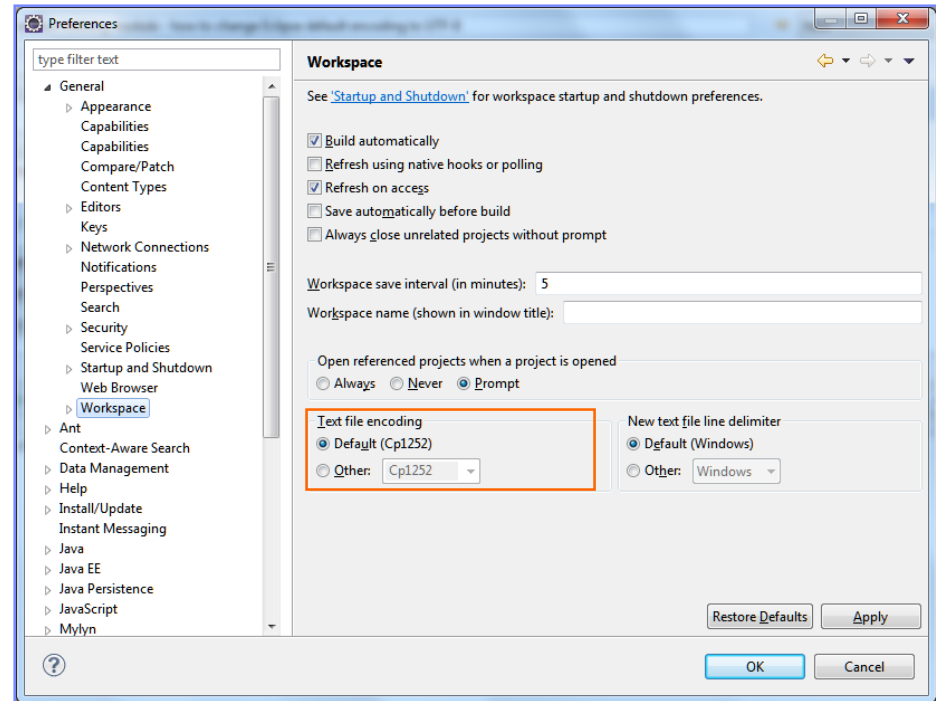
- Translation introduction
- Enabling translation of application strings
- Enabling translation of system messages
- Multi-language translation
- Detecting device locale and language
- Exercise

## ***Translation introduction***

- You can use the Worklight® framework to enable the translation of applications into other languages.
- Items that can be translated are:
  - Application strings.
  - System messages.
- The Worklight platform can automatically translate the application strings according to a designated file.
- Multi-language translation can be implemented by using JavaScript™.

# Translation introduction

- **Note:** The default workspace encoding in Eclipse is Cp1252.
- The default encoding of the Eclipse workspace must be changed before you create the Worklight project and start the translation work.
- In Eclipse, navigate to **Window > Preferences > General > Workspace**, and change the encoding to UTF-8.



# *Agenda*

- Translation introduction
- **Enabling translation of application strings**
- Enabling translation of system messages
- Multi-language translation
- Detecting device locale and language
- Exercise

## Enabling translation of application strings

- The `messages.js` file, which is intended for application strings, can be found in the `common\js` folder.

```
Messages = {  
  headerText: "Default header",  
  actionsLabel: "Default action label",  
  sampleText: "Default sample text",  
  englishLanguage : "English",  
  frenchLanguage : "French",  
}
```

- Application messages that are stored in `messages.js` can be referenced in two ways:
  - As a JavaScript object property, for example:  
`Messages.headerText` or `Messages.sampleText`.
  - As an ID of an HTML element with `class="translate"`.

```
<div id="header">  
  <h1 id="headerText" class="translate"></h1>  
</div>
```

A string that is defined in `Messages.headerText` is automatically used here.

# *Agenda*

- Translation introduction
- Enabling translation of application strings
- **Enabling translation of system messages**
- Multi-language translation
- Detecting device locale and language
- Exercise



## ***Enabling translation of system messages***

- It is also possible to translate system messages that the application shows, for example “Internet connection is not available” or “Invalid username or password”.
- System messages are stored in the `WL.ClientMessages` object.
- A full list of system messages can be found in the `www\default\worklight\messages\messages.json` file, which is located inside the Worklight generated projects (iOS, Android, Windows Phone 8, and so on,...).
- To enable the translation of a system message, override it in your JavaScript application.

```
WL.ClientMessages.loading = "Application HelloWorklight is loading... please wait.";
```

- Override system messages on a global JavaScript level because some parts of the code are executed only after the application has successfully initialized.

# *Agenda*

- Translation introduction
- Enabling translation of application strings
- Enabling translation of system messages
- **Multi-language translation**
- Detecting device locale and language
- Exercise

# Multi-language translation

- Using JavaScript, it is possible to implement multi-language translation for your applications.
- Set up the default application strings in the `messages.js` file.

```
Messages = {  
  headerText: "Default header",  
  actionsLabel: "Default action label",  
  sampleText: "Default sample text",  
  englishLanguage : "English",  
  frenchLanguage : "French",  
  russianLanguage : "Russian",  
  hebrewLanguage : "Hebrew"  
};
```

- Override specific strings when required.

```
function setFrench() {  
  Messages.headerText = "Traduction";  
  Messages.actionsLabel = "Sélectionnez langue:";  
  Messages.sampleText = "ceci est un exemple de texte en français.";  
}
```

# Multi-language translation

- Update GUI components with the new strings.

```
function languageChanged(lang) {  
  if (typeof(lang)!="string")  
    lang = $("#languages").val();  
  
  switch (lang){  
    case "english":  
      setEnglish();  
      break;  
    case "french":  
      setFrench();  
      break;  
    case "russian":  
      setRussian();  
      break;  
    case "hebrew":  
      setHebrew();  
      break;  
  }  
}
```

```
if ($("#languages").val()=="hebrew")  
  $("#wrapper").css({direction: 'rtl'});  
else  
  $("#wrapper").css({direction: 'ltr'});
```

```
$("#sampleText").html(Messages.sampleText);  
$("#headerText").html(Messages.headerText);  
$("#actionsLabel").html(Messages.actionsLabel);  
}
```

You can perform more tasks, such as setting text direction for right-to-left languages such as Hebrew or Arabic.

Each time an element is updated with different strings according to active language.

# *Agenda*

- Translation introduction
- Enabling translation of application strings
- Enabling translation of system messages
- Multi-language translation
- **Detecting device locale and language**
- Exercise

## Detecting device locales

- It is possible to detect the locale and the language of the device.
- Use `WL.App.getDeviceLocale()` and `WL.App.getDeviceLanguage()` to detect the current locale.

```
var locale = WL.App.getDeviceLocale();  
var lang = WL.App.getDeviceLanguage();  
WL.Logger.debug(">> Detected locale: " + locale);  
WL.Logger.debug(">> Detected language: " + lang);
```



05-12 12:27:19.685	D	26294	before: app init onSuccess
05-12 12:27:19.735	D	26294	>> Detected locale: en_US
05-12 12:27:19.745	D	26294	>> Detected language: en
05-12 12:27:19.775	D	26294	after: app init onSuccess

# *Agenda*

- Translation introduction
- Enabling translation of application strings
- Enabling translation of system messages
- Multi-language translation
- Detecting device locale and language
- **Exercise**

## Exercise

- Create an application that detects the handset locale at startup and provides the user with a GUI in the language detected.
- Do not hardcode any of the application strings. Instead, store them in the `messages.js` file.
- Override default system error messages.
- Add the option to select languages manually.
- Change GUI elements according to the language selected.



# Exercise

- The sample for this training module can be found in the Getting Started page of Worklight documentation website at <http://www.ibm.com/mobile-docs>.



# Quiz

*Test your knowledge. Answers are in the following slide.*

- Is it possible to detect the current device language and locale?
  - Yes, using `WL.App.getDeviceLocale` and `WL.App.getDeviceLanguage` APIs.
  - Yes, using `WL.App.getDeviceLanguageSettings` API.
  - It is only possible to detect the device language by using `WL.App.getDeviceLanguage`.
  - No, it is not possible.
- Which class should be added to an element in order for it to use a property from the `messages.js` file?
  - `resource`
  - `translate`
  - `localizable`
  - `externalText`
- In order to override system messages, which object properties should be overwritten?
  - `WL.SystemMessages`
  - `WL.Messages`
  - `WL.Resources.Messages`
  - `WL.ClientMessages`

## Quiz - answers

- Is it possible to detect the current device language and locale?
  - Yes, using `WL.App.getDeviceLocale` and `WL.App.getDeviceLanguage` APIs.
  - Yes, using `WL.App.getDeviceLanguageSettings` API.
  - It is only possible to detect the device language by using `WL.App.getDeviceLanguage`.
  - No, it is not possible.
- Which class should be added to an element in order for it to use a property from the `messages.js` file?
  - resource
  - translate
  - localizable
  - externalText
- In order to override system messages, which object properties should be overwritten?
  - `WL.SystemMessages`
  - `WL.Messages`
  - `WL.Resources.Messages`
  - `WL.ClientMessages`

# Notices

- Permission for the use of these publications is granted subject to these terms and conditions.
- This information was developed for products and services offered in the U.S.A.
- IBM may not offer the products, services, or features discussed in this document in other countries. Consult your local IBM representative for information on the products and services currently available in your area. Any reference to an IBM product, program, or service is not intended to state or imply that only that IBM product, program, or service may be used. Any functionally equivalent product, program, or service that does not infringe any IBM intellectual property right may be used instead. However, it is the user's responsibility to evaluate and verify the operation of any non-IBM product, program, or service.
- IBM may have patents or pending patent applications covering subject matter described in this document. The furnishing of this document does not grant you any license to these patents. You can send license inquiries, in writing, to:
  - IBM Director of Licensing  
IBM Corporation  
North Castle Drive  
Armonk, NY 10504-1785  
U.S.A.
- For license inquiries regarding double-byte character set (DBCS) information, contact the IBM Intellectual Property Department in your country or send inquiries, in writing, to:
  - Intellectual Property Licensing  
Legal and Intellectual Property Law  
IBM Japan Ltd.  
1623-14, Shimotsuruma, Yamato-shi  
Kanagawa 242-8502 Japan
- **The following paragraph does not apply to the United Kingdom or any other country where such provisions are inconsistent with local law:** INTERNATIONAL BUSINESS MACHINES CORPORATION PROVIDES THIS PUBLICATION "AS IS" WITHOUT WARRANTY OF ANY KIND, EITHER EXPRESS OR IMPLIED, INCLUDING, BUT NOT LIMITED TO, THE IMPLIED WARRANTIES OF NON-INFRINGEMENT, MERCHANTABILITY OR FITNESS FOR A PARTICULAR PURPOSE. Some states do not allow disclaimer of express or implied warranties in certain transactions, therefore, this statement may not apply to you.
- This information could include technical inaccuracies or typographical errors. Changes are periodically made to the information herein; these changes will be incorporated in new editions of the publication. IBM may make improvements and/or changes in the product(s) and/or the program(s) described in this publication at any time without notice.
- Any references in this information to non-IBM Web sites are provided for convenience only and do not in any manner serve as an endorsement of those Web sites. The materials at those Web sites are not part of the materials for this IBM product and use of those Web sites is at your own risk.
- IBM may use or distribute any of the information you supply in any way it believes appropriate without incurring any obligation to you.
- Licensees of this program who wish to have information about it for the purpose of enabling: (i) the exchange of information between independently created programs and other programs (including this one) and (ii) the mutual use of the information which has been exchanged, should contact:
  - IBM Corporation  
Dept F6, Bldg 1  
294 Route 100  
Somers NY 10589-3216  
USA

- Such information may be available, subject to appropriate terms and conditions, including in some cases, payment of a fee.
- The licensed program described in this document and all licensed material available for it are provided by IBM under terms of the IBM Customer Agreement, IBM International Program License Agreement or any equivalent agreement between us.
- Information concerning non-IBM products was obtained from the suppliers of those products, their published announcements or other publicly available sources. IBM has not tested those products and cannot confirm the accuracy of performance, compatibility or any other claims related to non-IBM products. Questions on the capabilities of non-IBM products should be addressed to the suppliers of those products.

## COPYRIGHT LICENSE:

- This information contains sample application programs in source language, which illustrate programming techniques on various operating platforms. You may copy, modify, and distribute these sample programs in any form without payment to IBM, for the purposes of developing, using, marketing or distributing application programs conforming to the application programming interface for the operating platform for which the sample programs are written. These examples have not been thoroughly tested under all conditions. IBM, therefore, cannot guarantee or imply reliability, serviceability, or function of these programs.
- Each copy or any portion of these sample programs or any derivative work, must include a copyright notice as follows:
  - © (your company name) (year). Portions of this code are derived from IBM Corp. Sample Programs.  
© Copyright IBM Corp. \_enter the year or years\_. All rights reserved.

## Privacy Policy Considerations

- IBM Software products, including software as a service solutions, ("Software Offerings") may use cookies or other technologies to collect product usage information, to help improve the end user experience, to tailor interactions with the end user or for other purposes. In many cases no personally identifiable information is collected by the Software Offerings. Some of our Software Offerings can help enable you to collect personally identifiable information. If this Software Offering uses cookies to collect personally identifiable information, specific information about this offering's use of cookies is set forth below.
- Depending upon the configurations deployed, this Software Offering may use session cookies that collect session information (generated by the application server). These cookies contain no personally identifiable information and are required for session management. Additionally, persistent cookies may be randomly generated to recognize and manage anonymous users. These cookies also contain no personally identifiable information and are required.
- If the configurations deployed for this Software Offering provide you as customer the ability to collect personally identifiable information from end users via cookies and other technologies, you should seek your own legal advice about any laws applicable to such data collection, including any requirements for notice and consent. For more information about the use of various technologies, including cookies, for these purposes, see IBM's Privacy Policy at <http://www.ibm.com/privacy> and IBM's Online Privacy Statement at <http://www.ibm.com/privacy/details> the sections entitled "Cookies, Web Beacons and Other Technologies" and the "IBM Software Products and Software-as-a-Service Privacy Statement" at <http://www.ibm.com/software/info/product-privacy>.

# Support and comments

- For the entire IBM Worklight documentation set, training material and online forums where you can post questions, see the IBM website at:
  - <http://www.ibm.com/mobile-docs>
- **Support**
  - Software Subscription and Support (also referred to as Software Maintenance) is included with licenses purchased through Passport Advantage and Passport Advantage Express. For additional information about the International Passport Advantage Agreement and the IBM International Passport Advantage Express Agreement, visit the Passport Advantage website at:
    - <http://www.ibm.com/software/passportadvantage>
  - If you have a Software Subscription and Support in effect, IBM provides you assistance for your routine, short duration installation and usage (how-to) questions, and code-related questions. For additional details, consult your IBM Software Support Handbook at:
    - <http://www.ibm.com/support/handbook>
- **Comments**
  - We appreciate your comments about this publication. Please comment on specific errors or omissions, accuracy, organization, subject matter, or completeness of this document. The comments you send should pertain to only the information in this manual or product and the way in which the information is presented.
  - For technical questions and information about products and prices, please contact your IBM branch office, your IBM business partner, or your authorized remarketer.
  - When you send comments to IBM, you grant IBM a nonexclusive right to use or distribute your comments in any way it believes appropriate without incurring any obligation to you. IBM or any other organizations will only use the personal information that you supply to contact you about the issues that you state.
  - Thank you for your support.
  - Submit your comments in the IBM Worklight Developer Edition support community at:
    - <https://www.ibm.com/developerworks/mobile/worklight/connect.html>
  - If you would like a response from IBM, please provide the following information:
    - Name
    - Address
    - Company or Organization
    - Phone No.
    - Email address

***Thank You***

