



IBM IT Education Services

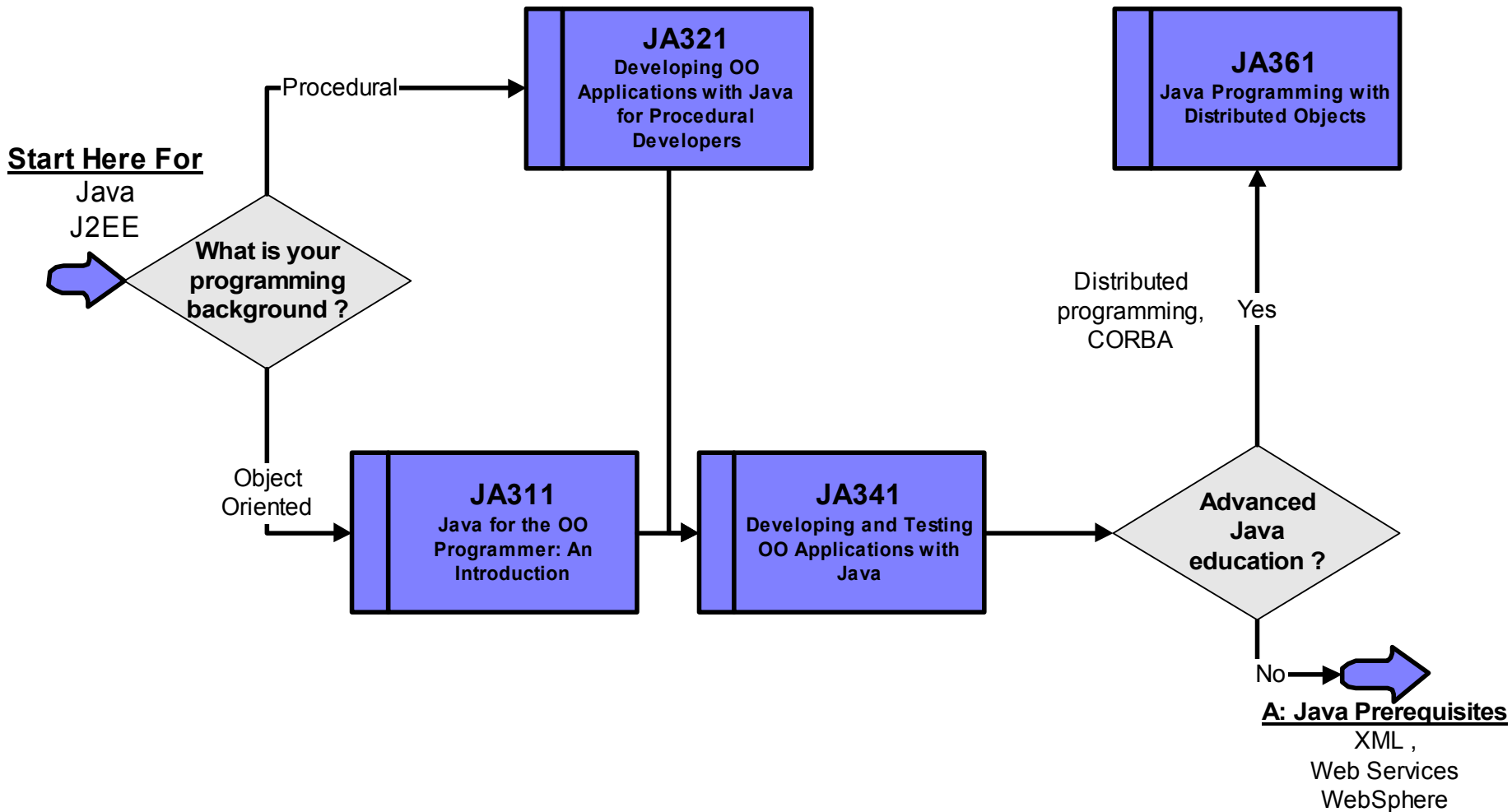
# WebSphere Commerce Education

WebSphere Commerce 5.5 & Prerequisites  
Training Paths

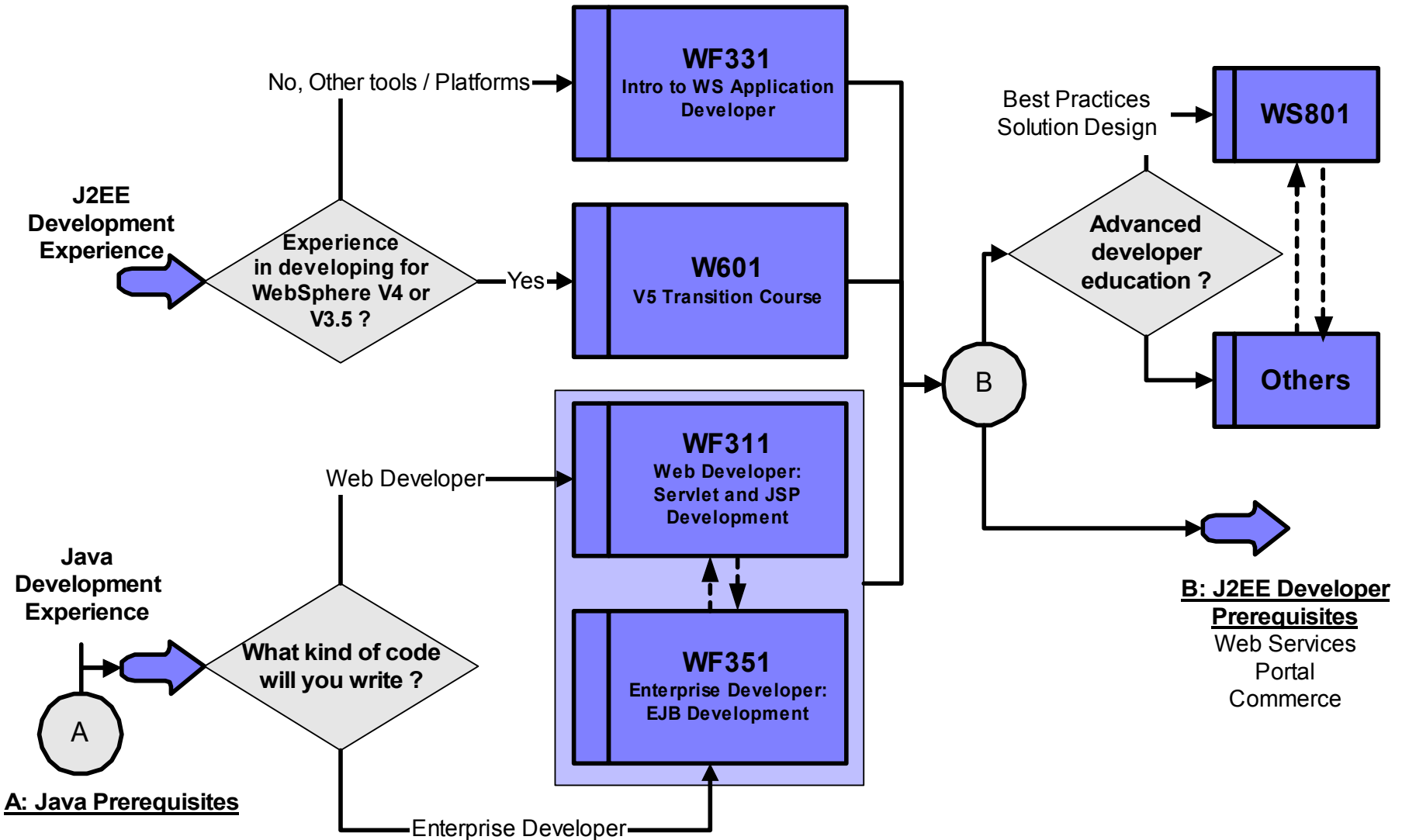
Dec 2003 | Information subject to change  
Ashish Cowlagi ( [ashishc@us.ibm.com](mailto:ashishc@us.ibm.com) )

© 2003 IBM Corporation

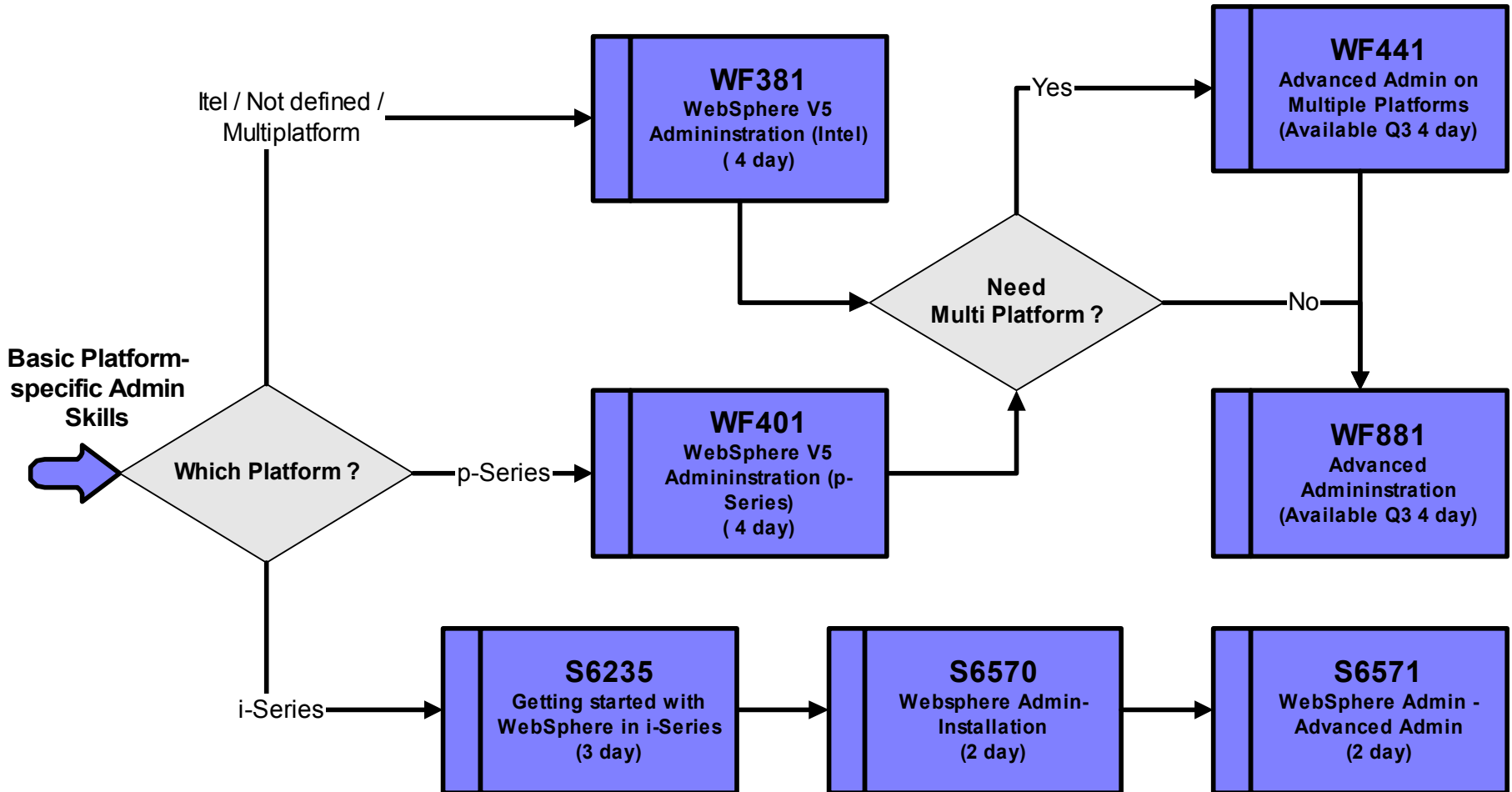
# Java



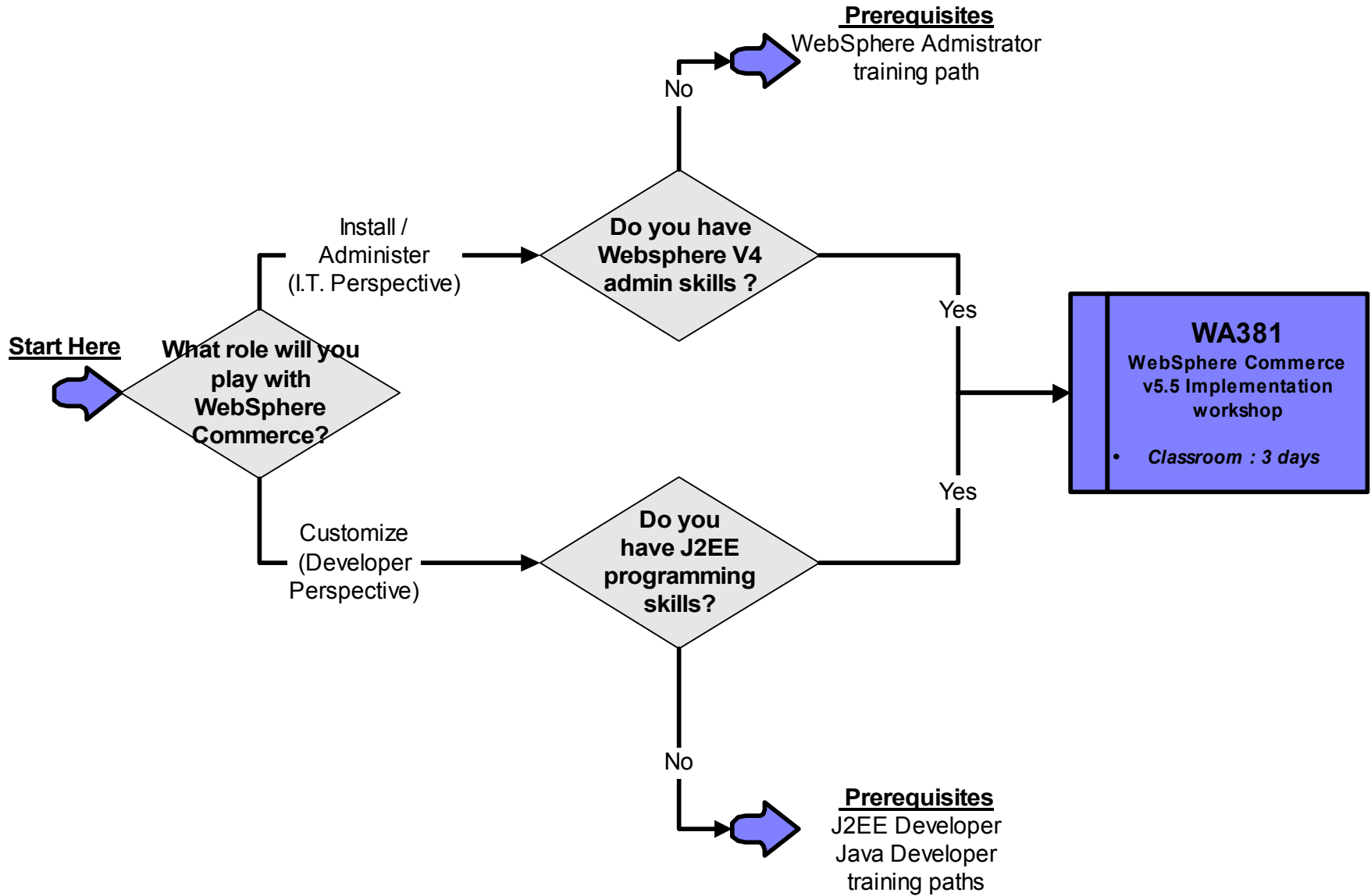
# J2EE & WebSphere Development



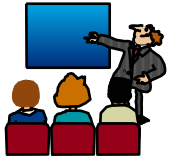
# WebSphere Administration



# WebSphere Commerce Server



# Tiered Approach to Education



## Tier 4: Classroom Training

- 1000+ Classrooms worldwide
- Most with a high concentration of technical Labs
- Experienced Instructors

- Gold Standard in Technical Education



## Tier 3: IBM e-Tutorial

- Online, Self Paced courses
- Instructor guided. Access to instructor via instant messaging
- Flexible, 24/ 7 – take the classes on your own schedule !

- Up to 120 days to complete each course ( varies by course)
- Hands on Labs on our e-Lab Servers
- Same Content as classroom with enhancements to suit the medium.



## Tier 2: IBM Alliance CBT Library

- Interactive Computer Based Education
- Comprehensive Library
- Delivered online or via CDs

- Includes Lab simulations

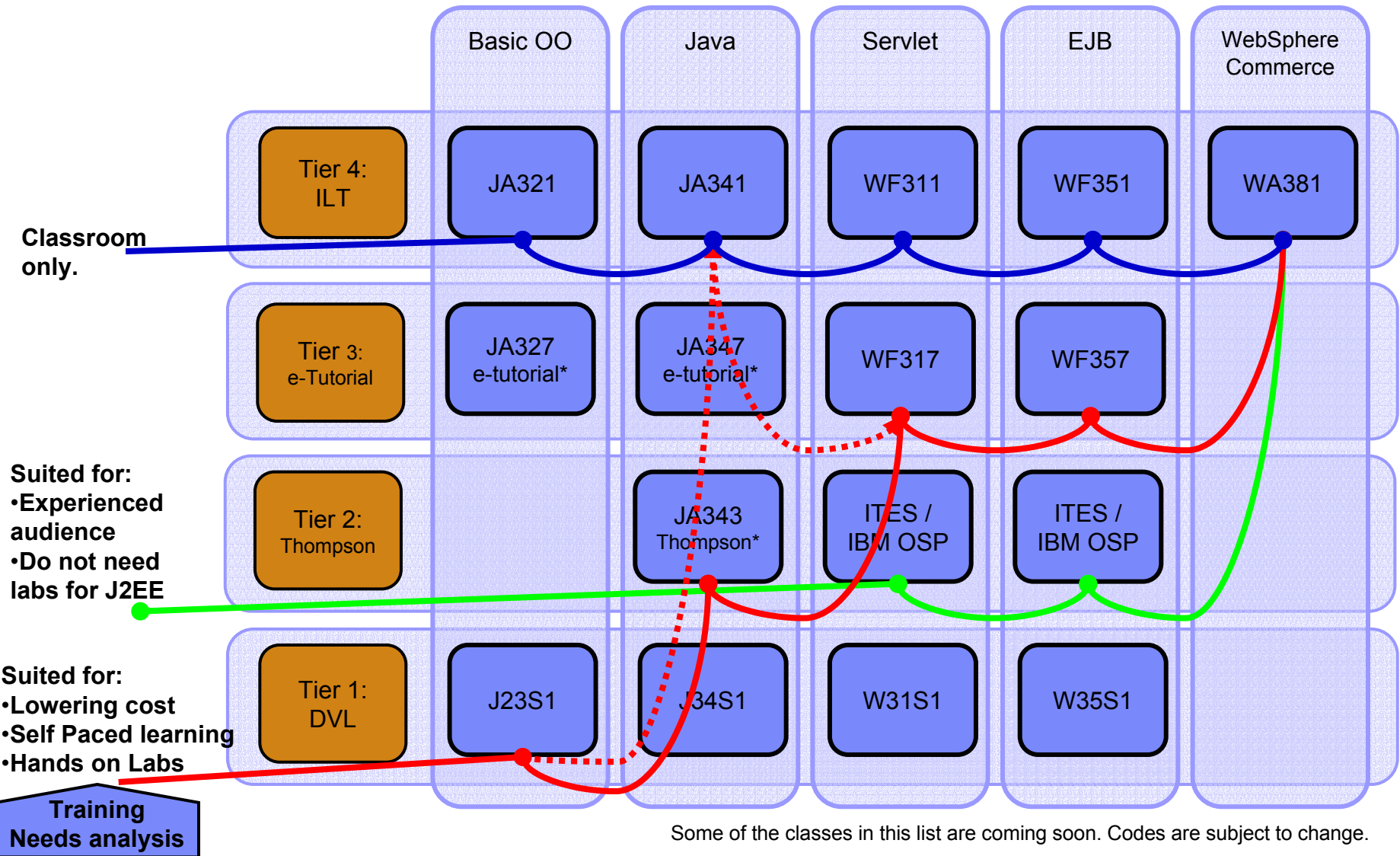


## Tier 1: Digital Video Library

- Learn from high quality IBM instructors
- Delivered in easy to use CD ROM format that can be played on your desktop

- Instructor Lectures, captured on Video
- Student notes on CD

# Sample Blend Roadmaps: Developers



# Summary

- Courses can be tailored to meet your team's custom requirements!
  - Team sizes as small as 7 !
  - For more information about tailored education services, please visit us on the web at [www.ibm.com/training/custom](http://www.ibm.com/training/custom)
  
- Blended Learning Offerings
  - Ideal solutions for managing an extended team transition
  - A blended solution can be custom-designed for your team
  - Please visit us at [www.ibm.com/services/learning/us](http://www.ibm.com/services/learning/us)