



IBM WebSphere Application Server, Standard Edition

Highlights

Supports medium- to high-level dynamic Web page serving

Supports dynamic Web-content generation, including use of JavaBeans technology, XML and XSL

Allows Web applications with reusable business logic and portable data, for rapid site deployment in a dynamic Web page-serving environment

Includes comprehensive Web-site content and usage analyzers and reporting tools

Includes an Apache-based HTTP server and support for other major Web servers, with enhancements for security and control

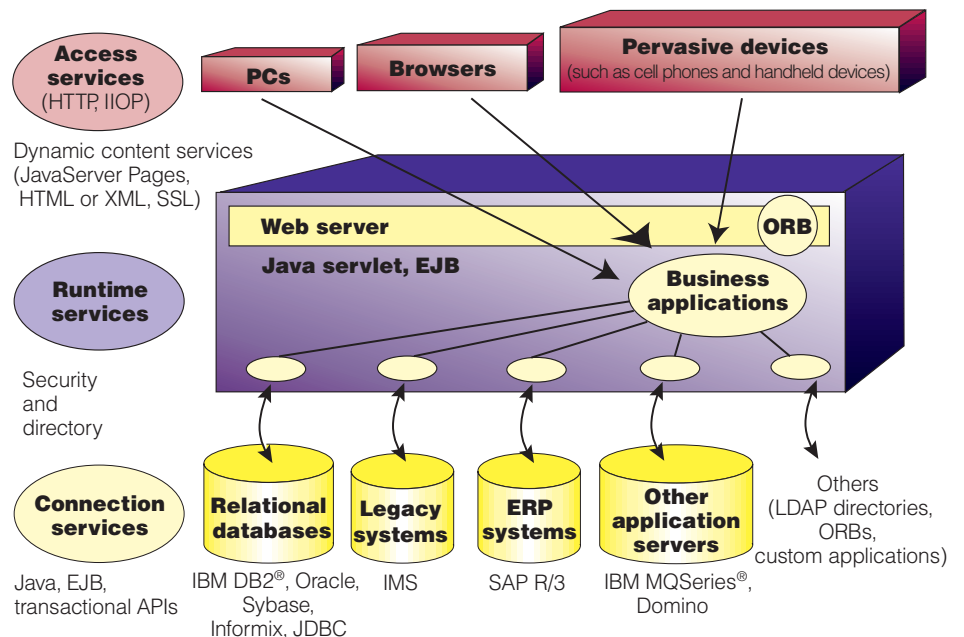
Helps reduce the time and associated cost of deploying e-business applications, with industry-standard tools in an enhanced development environment

Reliable, scalable, secure

IBM WebSphere™ Application Server, Standard Edition provides a robust deployment environment for e-business applications and components. Standard Edition combines the control and portability of server-side business applications and Extensible Markup Language (XML) support with the performance and manageability of Java™ technologies and APIs.

WebSphere Application Server, Standard Edition extends the value and versatility of your Web server with:

- JavaBeans™ technology and XML support, including support for applications built with the Java servlet specification
- Database pooling, for dynamic access to databases with Java Database Connectivity (JDBC™) access, including IBM DB2® Universal Database™, Oracle and SQL Server
- A simple graphical interface that implements the Java servlet 2.1 API, for the creation of user sessions and state information



WebSphere Application Server enables quick and easy display of dynamic Web content and can provide high-performance database connectivity and state management.



Get your e-business up to speed

- An IBM HTTP server based on the Apache Web server, and support for other major Web servers, with enhancements for security and control
- Extensive monitoring tools that allow you to watch your site's servlets and sessions with nearly realtime capability
- Tivoli Ready™ modules that can be managed by Tivoli® technology-based tools
- Intel® and UNIX® technology-based platform versions, including IBM AIX®, Sun Solaris™, Novell NetWare, Microsoft® Windows NT®, IBM OS/390®, Red Hat Linux™ and Caldera Linux operating environments on HTTP servers from Apache, IBM, Microsoft and Netscape

Data from any XML source

WebSphere Application Server, Standard Edition includes support for XML and Extensible Style Language (XSL) technologies to improve data definition and sharing, allowing data presentation to be separated from your actual data. Standard Edition includes tools that support:

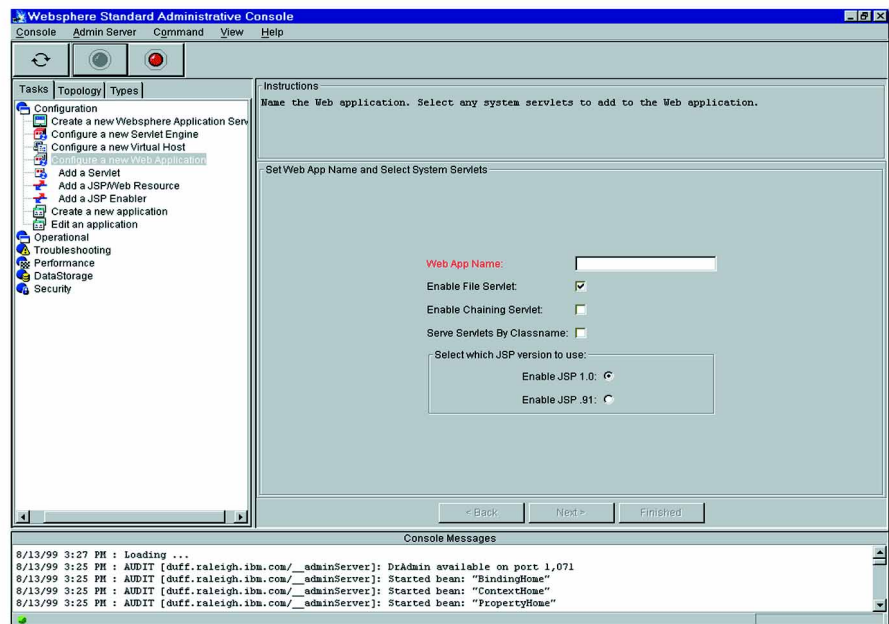
- An XML and XSL parser, utilizing the latest W3C XML 1.0 specifications
- Dynamic HTML generation, based on XML DOM Level 1 recommendations
- An XML DTD library, for local validation of a document's structure
- An XSL processor to transform your XML data into formatted HTML

Additional tools enable you to tailor data to specific devices, including initial support for Wireless Markup Language (WML).

Dynamic page generation

WebSphere Application Server, Standard Edition enables powerful Web interactions within multiple platform environments using Java servlets and JavaServer Pages™ (JSP™), offering full support of level .91 and level 1.0 of the JSP specification.

The Standard Edition provides two additional easy-to-use, HTML-like tags that simplify connecting to relational databases and help increase the productivity of Web site developers. The Query tag is used to build database



The graphical user interface makes it easy to monitor loaded servlets.

connections. The Connection tag is used for building and maintaining stateful connections. Instead of having to write new code, Web developers can use these tags like other tags in an HTML file.

Security-enhanced Web access

WebSphere Application Server, Standard Edition lets you create security-enhanced Web sites that allow you to control access to your business information. You can create secure access control lists at a granular level. In addition to defining security at the user and group levels, you can establish controls and policies for specific calls and methods within the applications themselves. Standard Edition provides control and protection within the server deployment environments.

Standard Edition also provides support for user registries based on Lightweight Directory Access Protocol (LDAP). LDAP is an open, vendor-neutral standard that provides an extendable architecture for centralized storage and management of information.

Supported HTTP servers

WebSphere Application Server plugs into the following Web servers:

- Apache Server, Version 1.3.12, or higher, for AIX, Solaris, Windows NT and HP-UX
- Netscape Enterprise Server, Version 3.5.1, or higher, for AIX, Solaris and Windows NT
- iPlanet Enterprise Server 4.0 for AIX, Solaris, Windows NT, Microsoft Windows® 2000 and HP-UX
- Microsoft Internet Information Server, Version 4.0 for Windows NT
- Microsoft Internet Information Server, Version 5.0 for Windows 2000
- Lotus® Domino™ Application Server, Release 5.0.2b for AIX, Solaris, Windows NT and HP-UX
- IBM HTTP Server Version 1.3.12 for AIX, Solaris, Windows NT, Windows 2000 and HP-UX

WebSphere software platform: building on a firm foundation

IBM WebSphere Application Server, Standard Edition is part of the IBM WebSphere software platform—a comprehensive set of integrated, award-winning e-business solutions. No matter where you are in the e-business cycle, the WebSphere software platform allows you to grow—at the speed the market demands. Building on this robust platform, you can connect diverse IT environments to maximize your current investments and leverage existing skills. Deliver your core business applications to the Web using industry standards like Java technology and XML. And create next-generation applications that differentiate you from the competition. Advance to a powerful platform for integrated e-business—the WebSphere software platform.

IBM WebSphere Application Server, Standard Edition at a glance

- Minimum system requirements**
- CD-ROM drive
 - 256MB of memory, 512MB recommended
 - Netscape Navigator Version 4.07 or Microsoft Internet Explorer Version 4.01
 - 75MB of available space for installation

- Minimum software requirements**
- Version 3.5*
- Windows NT Server, Version 4.0; Windows 2000 Server, Version 5.0, Solaris Version 2.6; AIX V4.3.3; or HP-UX, Version 11.0
 - IBM Java Development Kit, Version 1.2.2 for Windows NT and Windows 2000; Sun Java Development Kit, Version 1.2.2.03 for Solaris; or IBM Java Development Kit, Version 1.2.2.03 for AIX and HP-UX
 - Support for a communication adapter for Windows NT and Windows 2000; TCP/IP and an adapter for Solaris; network interface for AIX and HP-UX

Version 3.0

- Red Hat Linux, Version 6.2; Caldera Linux, Version 2.3; IBM OS/400®, Version 4, Release 4; or IBM OS/390, Version 2, Release 8
- IBM Java Development Kit, Version 1.1.8 for Linux and OS/400
- Support for network interface for Linux and OS/400



© Copyright IBM Corporation 2000

IBM Corporation
Software Communications
Route 100, Building 1
Somers, NY 10589

Printed in the United States of America
06-00
All Rights Reserved

AIX, DB2, DB2 Universal Database, the e-business logo, IBM, MQSeries, OS/390, OS/400 and WebSphere are trademarks of International Business Machines Corporation in the United States, other countries or both.

Domino and Lotus are trademarks of Lotus Development Corporation in the United States, other countries or both.

Tivoli and Tivoli Ready are trademarks of Tivoli Systems Inc. in the United States, other countries or both.

Intel is a trademark of Intel Corporation in the United States, other countries or both.

Java, all Java-based trademarks and logos, and Solaris are trademarks of Sun Microsystems, Inc. in the United States, other countries or both.

Microsoft, Windows and Windows NT are trademarks of Microsoft Corporation in the United States, other countries or both.

UNIX is a registered trademark of The Open Group in the United States and other countries.

Linux is a registered trademark of Linus Torvalds.

Other company, product and service names may be trademarks or service marks of others.



Printed in the United States on recycled paper containing 10% recovered post-consumer fiber.

For more information

To learn more about IBM WebSphere Application Server, Standard Edition, visit:
ibm.com/software/websphere/appserv

To learn more about how IBM WebSphere software platform can help you succeed in e-business, contact your IBM representative, IBM Business Partner or visit:
ibm.com/websphere

To order WebSphere Application Server, Standard Edition, contact your IBM representative or IBM Business Partner, or call 1 800 IBM-CALL. Or visit the Shop IBM Web site:
ibm.com/shop



G325-3911-02