

IBM Program usage and installation report instructions

FileNet Content Manager / P8 Platform Help Guide

- [FileNet Content Manager / P8 Platform \(Concurrent Users\)](#)
- [FileNet Content Manager / P8 Platform \(Authorized Users\)](#)

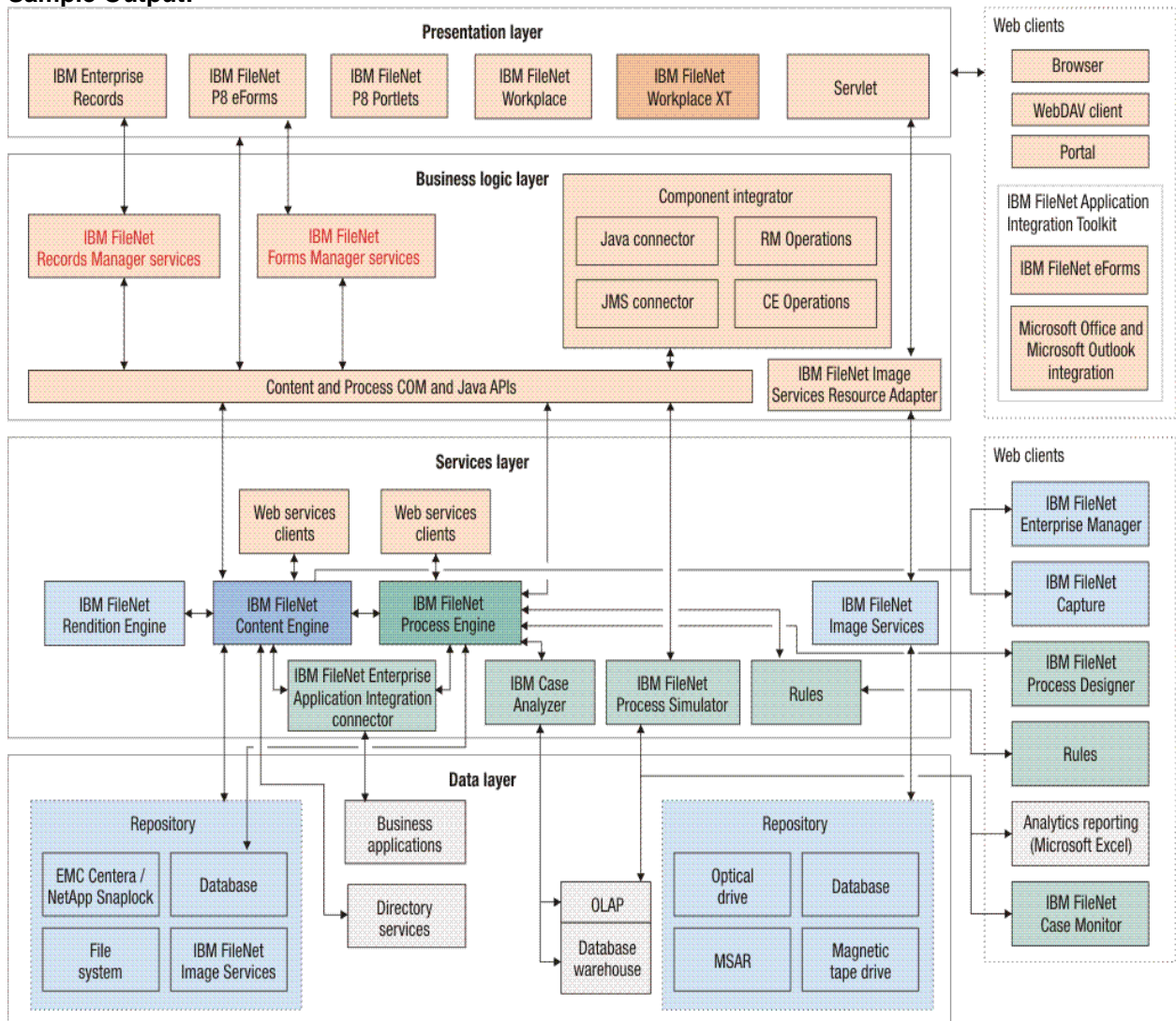
Please see below the additional help in collecting deployment information for your IBM Software. (You may need to zoom in to more easily view the screenshots.)

FileNet Content Manager / P8 Platform (Concurrent Users)

Please see below the FileNet P8 Platform (Concurrent Users) Help Section

1. For each of your web/application servers, please provide the log of the last 90 days, in a text file format.
2. Please provide the FileNet P8 System Architecture Diagram.

Sample Output:



FileNet Content Manager / P8 Platform (Authorized Users)

Please see below the FileNet P8 Platform (Authorized Users) Help Section

1. For each of your FileNet P8 systems, please provide text files containing both syntax and output of the queries executed from the authentication mechanism (i.e. MS Active Directory, CA SiteMinder, etc.) to determine the list of distinct users.
2. Please provide the FileNet P8 System Architecture Diagram.

Sample Output:

