

Unica Campaign Help Guide

Latest release::IBM Campaign

Please see below the additional help in collecting deployment information for your IBM Software. (You may need to zoom in to more easily view the screenshots.)

Please provide the following screenshots containing number of users and custom records:

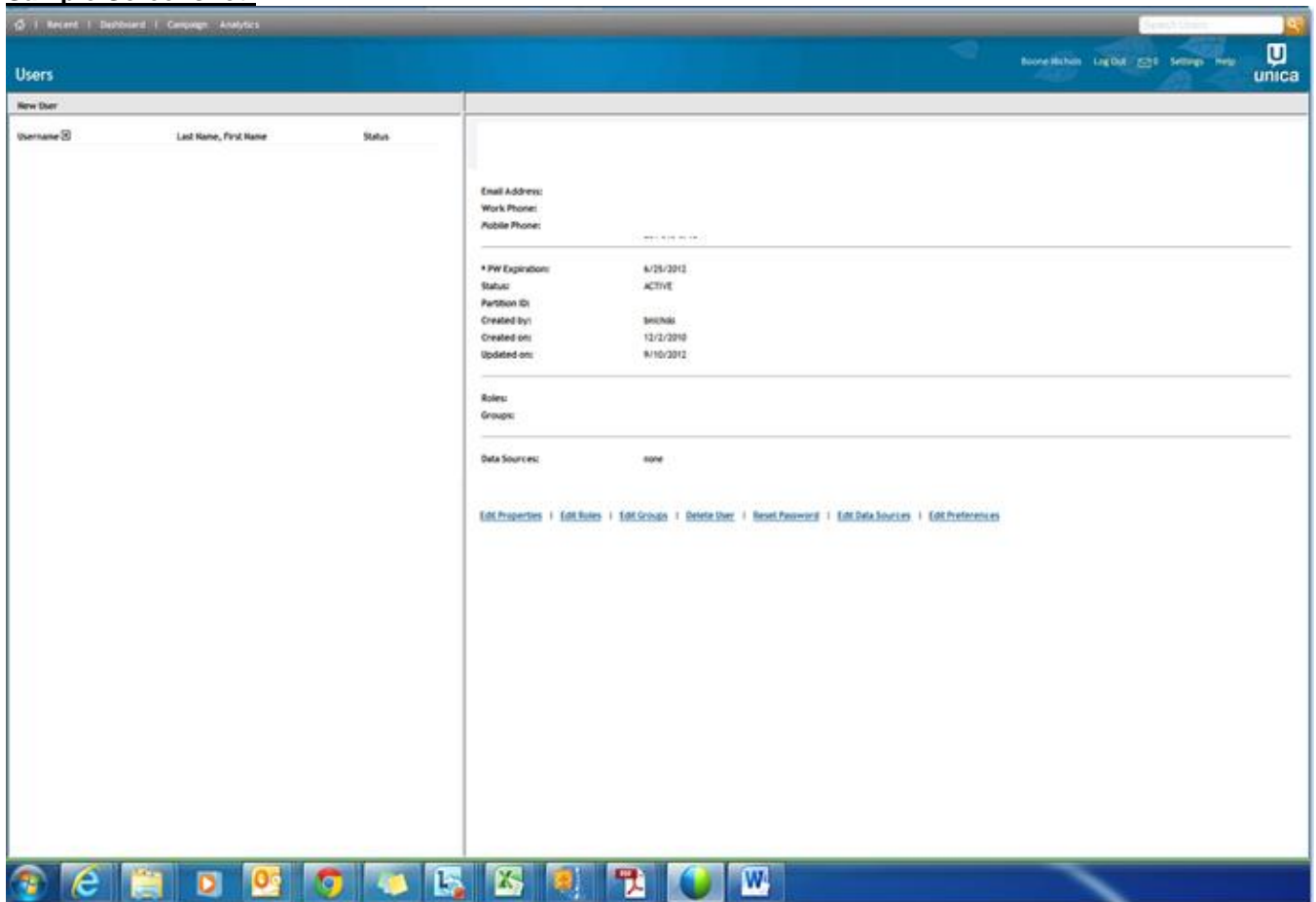
[Unica Campaign – Authorized User](#)

[Unica Campaign Users Limited Use – Authorized User](#)

[Unica Campaign – Customer Records](#)

Unica Campaign – Authorized User

Sample Screenshot:



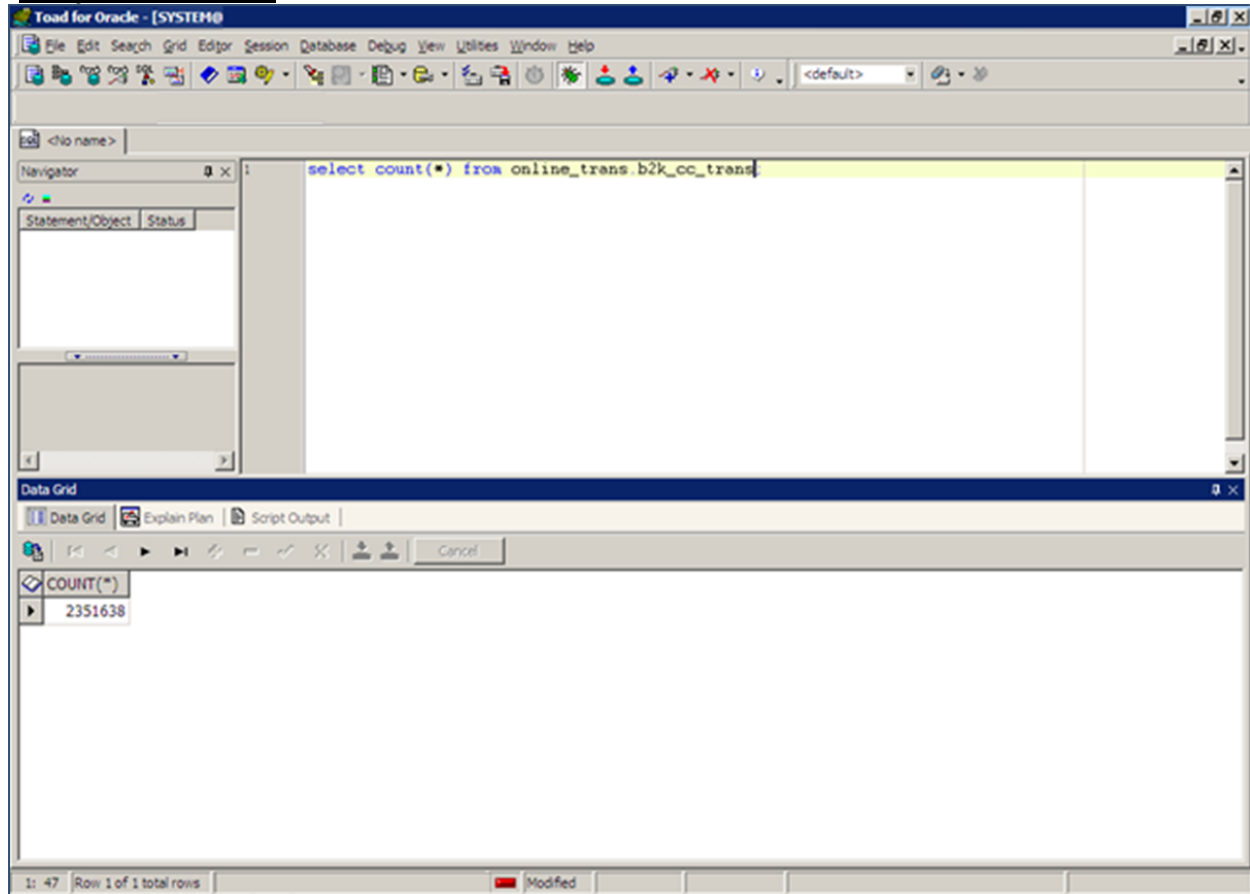
Unica Campaign Users Limited Use – Authorized User

Sample Screenshot:

The screenshot displays the Unica Affinium Manager interface. At the top, there is a navigation bar with the following tabs: User Administration, Group Manager (highlighted), Application Access, Configuration Manager, Status, and Extensions. Below the navigation bar is the Unica Affinium Manager logo. The main content area is divided into two sections. On the left, under the heading 'New Group', there is a 'Group Hierarchy' tree. The tree shows a folder icon for 'All Groups' containing several sub-folders: 'All Users', 'AM Administrators', 'AM Users', 'Campaign Administrators', and 'Campaign Users'. On the right, there is a section titled 'Campaign Users' with a light green header. Below this header, under the heading 'Users:', there is a list of user names, each preceded by a small icon and followed by a link: [cms_batch](#), [s18445](#), [s21646](#), [s27219](#), [s27337](#), [s29569](#), [s37989](#), [s41883](#), [s42208](#), [s42585](#), [s42586](#), [s42669](#), [s42770](#), [s43159](#), [s43630](#), [s44157](#), [s45619](#), [s47624](#), [s47664](#), [s48721](#), [s48974](#), [s52765](#), [sys_admin](#), and [unica_batch](#).

Unica Campaign – Customer Records

Sample Screenshot:



Additional resources

[Unica Campaign License Information \(8.5 – 8.6\)](#)

[IBM Campaign License Information \(all\)](#)