

IBM Program usage and installation report instructions

TotalStorage Productivity Center Help Guide

Please see below the additional help in collecting deployment information for your IBM Software. (You may need to zoom in to more easily view the screenshots.)

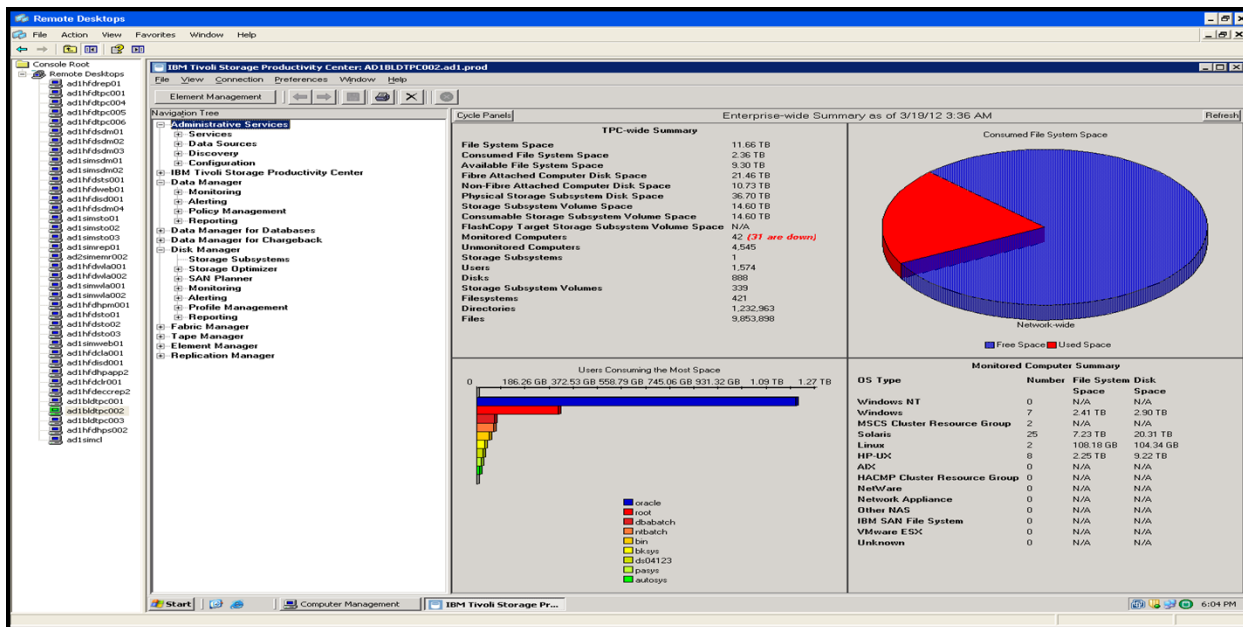
Please provide a screenshot from the console for Tivoli TPC by subsystem.

TotalStorage Productivity Center

Open the console for Tivoli TPC and navigate to the 'Reporting' section and then the 'Capacity'. Take and submit a screenshot of this view.

Sample Output:

Zoom to 200% to view details



For instructions on featurization settings go to page 2

IBM Program usage and installation report instructions

TotalStorage San Volume Controller

Open the console for TotalStorage SVC. Navigate to the 'Server and Maintenance' section and then the 'Set Features' view. Find the section titled 'Featurization Settings' and take and submit a screenshot.

Featurization Settings

This panel displays the existing feature settings. If you want to change the existing settings, click **Update Feature Settings** after changing the settings.

Attention

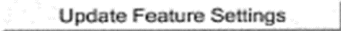
Consult your license to determine the following :-
The amount of storage (in Gigabytes) that you are permitted to virtualize.
The Metro & Global Mirror or Flash Copy options that you are authorized to enable.

You must only enable the options specified in your license in order to remain within the terms of the license. To modify or add licence options, contact your sales representative.

The Virtualization Limit represents the amount of storage that you are permitted to virtualize. It must be set to a non-zero value in order to use the system.

Current Feature Settings

Parameter	Disabled	Enabled
FlashCopy	<input type="radio"/>	<input checked="" type="radio"/>
Metro & Global Mirror	<input type="radio"/>	<input checked="" type="radio"/>
Virtualization Limit (Gigabytes)	<input type="text" value="55000"/>	

 Update Feature Settings