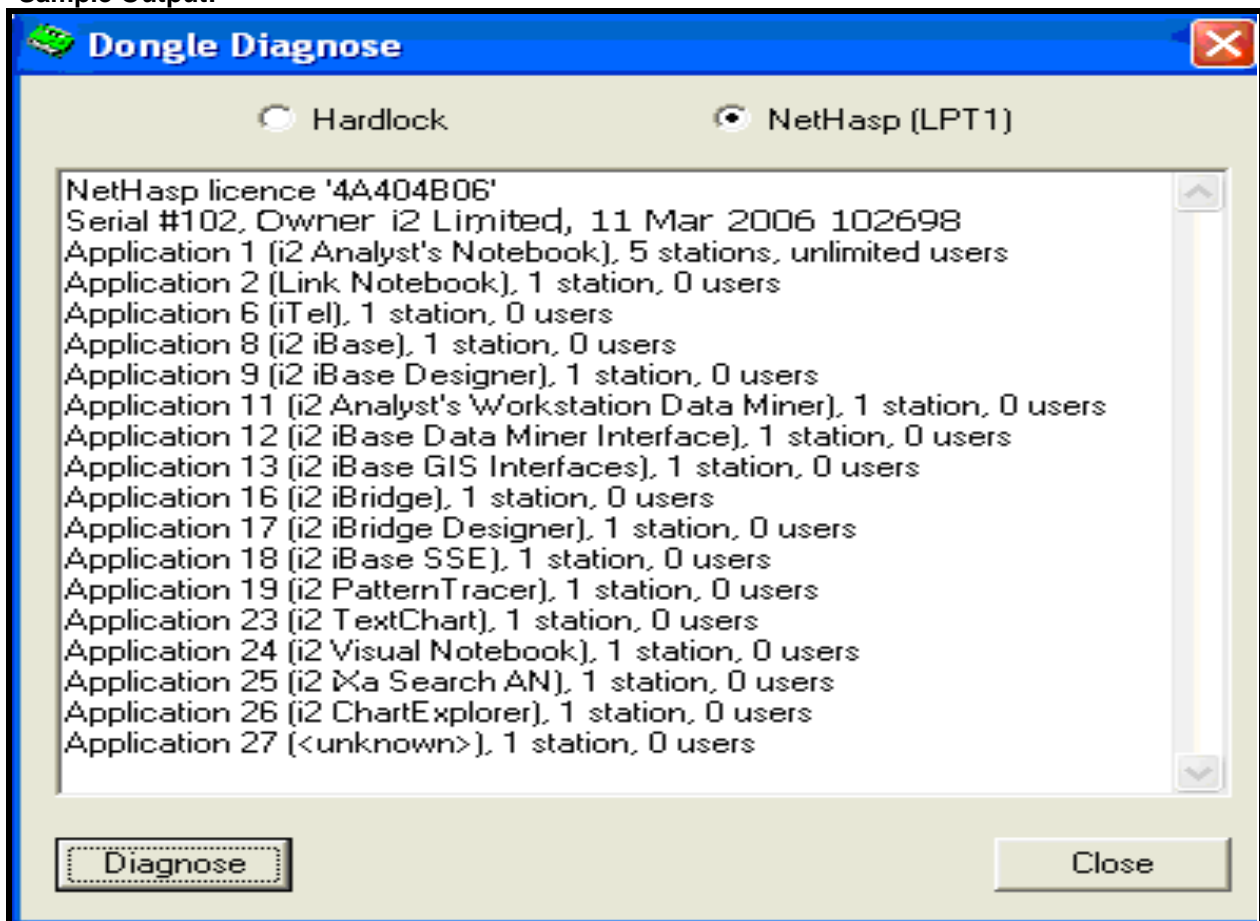


i2 Help Guide

Please see below the additional help in collecting deployment information for your IBM Software. (You may need to zoom in to more easily view the screenshots.)

- 1.) Please run the Dongle Diagnose utility provided by i2. It is typically located in the folder \Dongle\i2 Dongle Diagnostics.
- 2.) In order to read the dongle contents, the appropriate HASP device drivers must be installed. If this is not the case, please visit the below link for instructions on downloading the HASP drivers.
http://www.issafrica.co.za/downloads/dongle/user_guides/nethasplicenseanagerguide.pdf
- 3.) If you have a network HASP dongle attached, Dongle Diagnose will list the contents of the dongle. To list the contents of a HASP dongle:
 - Double-click on DongleDiag.exe
 - Select NetHasp and click Diagnose
- 4.) Take a screenshot of the following window (example):

Sample Output:



Additional resources

[i2 License Information \(all\)](#)