

Welcome to
Managing & Securing
the Mobile Enterprise

PLEASE NOTE:

IBM's statements regarding its plans, directions, and intent are subject to change or withdrawal without notice at IBM's sole discretion.

Information regarding potential future products is intended to outline our general product direction and it should not be relied on in making a purchasing decision.

The information mentioned regarding potential future products is not a commitment, promise, or legal obligation to deliver any material, code or functionality. Information about potential future products may not be incorporated into any contract.

The development, release, and timing of any future features or functionality described for our products remains at our sole discretion.





STEVEN SCHEURMANN

Endpoint Management & Mobility

stevenscheurmann@sg.ibm.com



2005

Image credit: Reuters via Business Insider



Image credit: Reuters via Business Insider

What's Changing:

How we connect



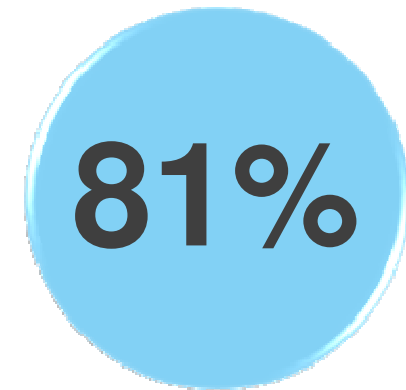
How often the average mobile user checks their phone each day

What we expect



...of adults expect a mobile transaction experience to be better than using a laptop or PC

How we work



... of employed adults use at least one personal mobile device for business



Top Challenges



Integration

54%

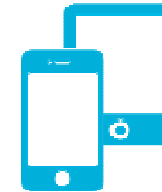
of companies struggle to integrate mobile applications with existing systems



Security

53%

of companies struggle to implement end-to-end mobile security solutions



Device Management

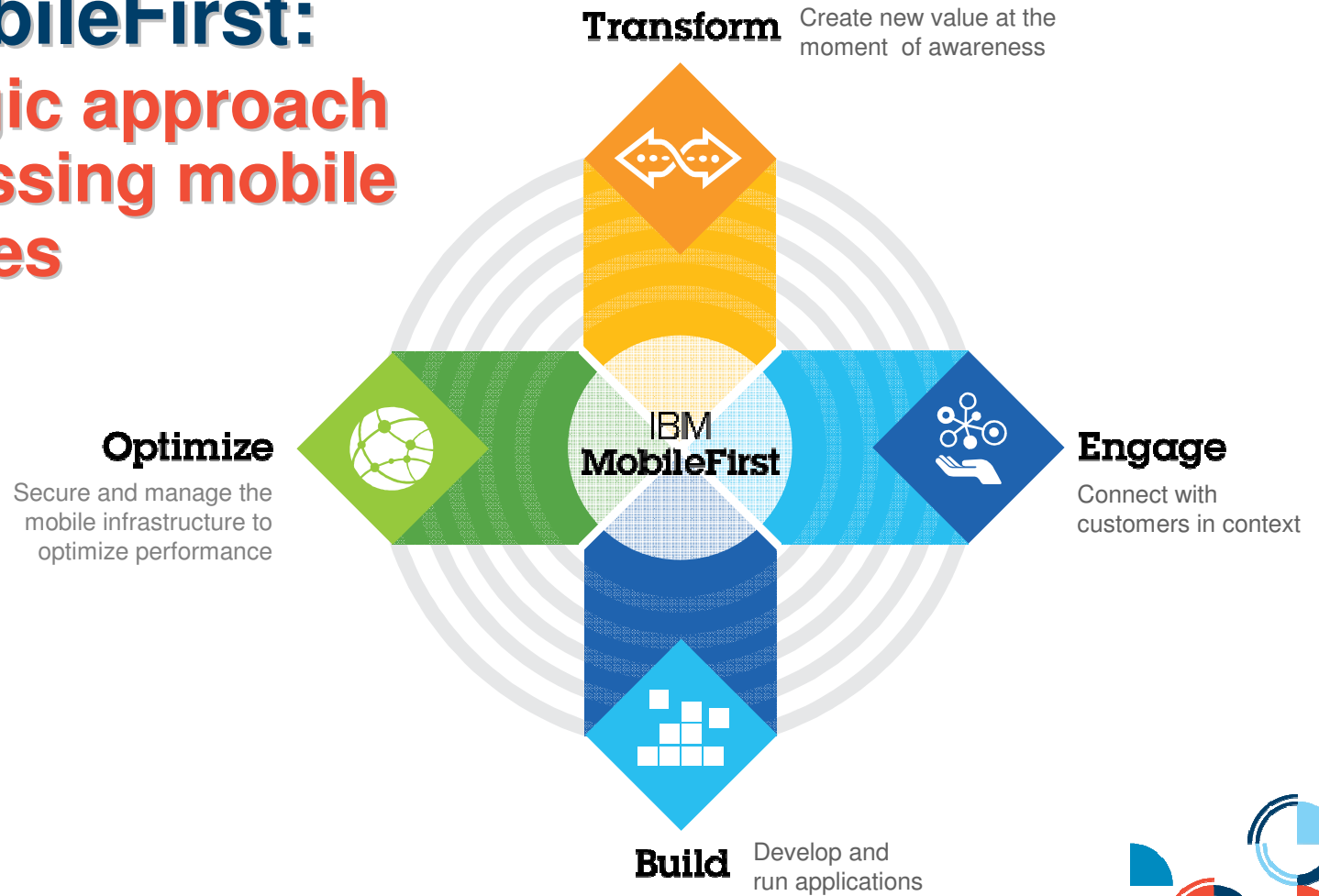
49%

of companies struggle to manage change associated with employees using mobile devices

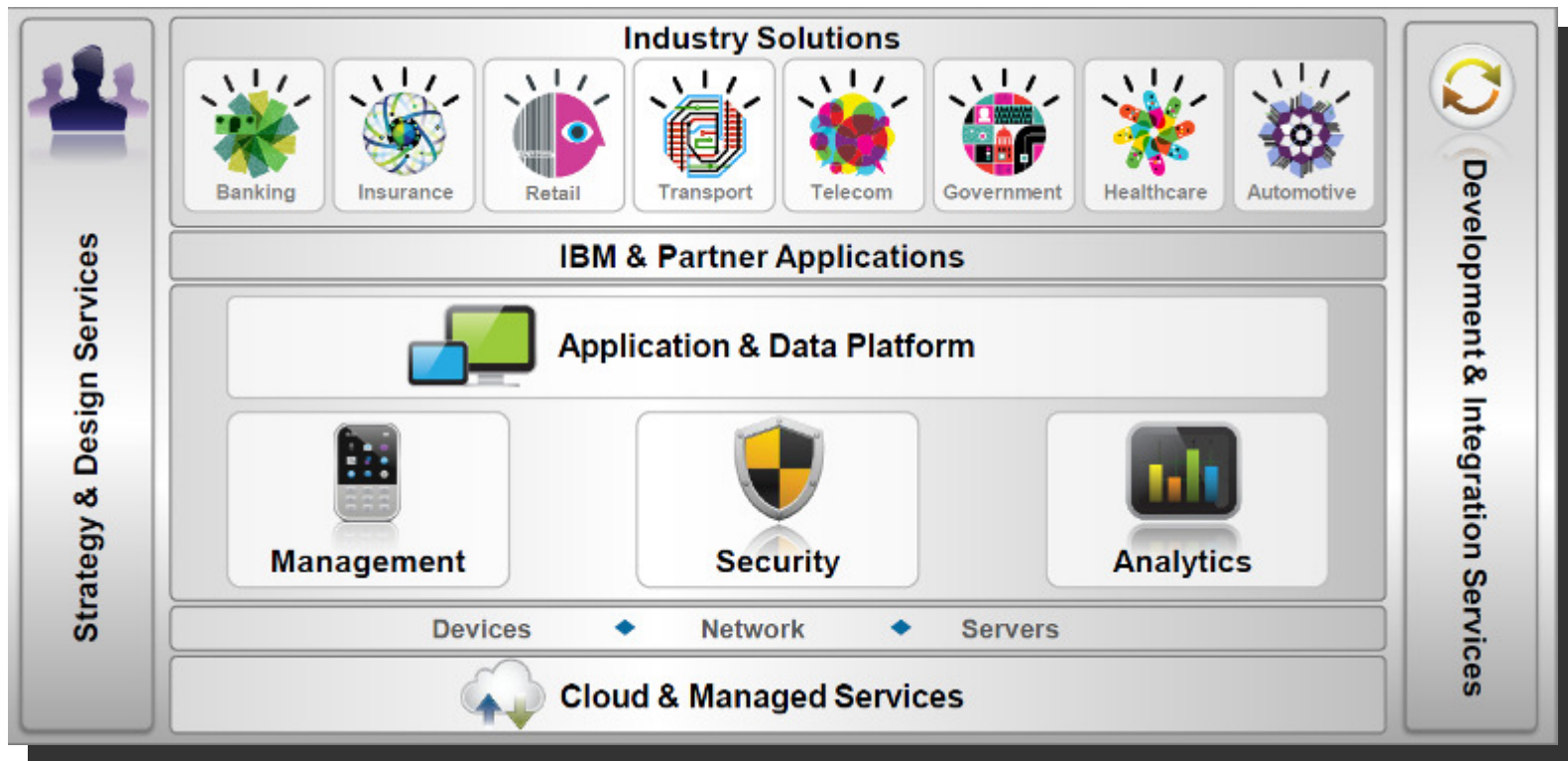


IBM MobileFirst:

A strategic approach to addressing mobile challenges

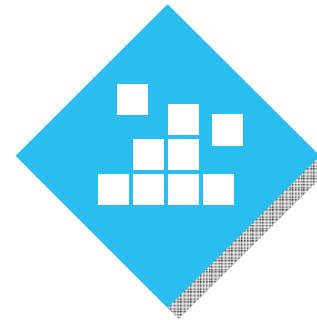


IBM MobileFirst Portfolio Delivers End-to-end Solutions



IBM MobileFirst Can Help You:

- Rapidly create data-driven apps and explore back-end services (like SAP) without code
([IBM Worklight 6.1](#))
- Capture tester and live user feedback and usage data to create better apps throughout the delivery lifecycle
([IBM Mobile Quality Assurance Open Beta](#))
- Automate testing of native, hybrid and HTML5 mobile apps ([IBM Rational Test Workbench 8.5.1](#))
- Continuous deployment of Worklight apps from test through to production*
([IBM UrbanCode Deploy plug-in for Worklight](#))



Build

Develop and run applications

*Planned in a future release

IBM MobileFirst Can Help You:



Engage

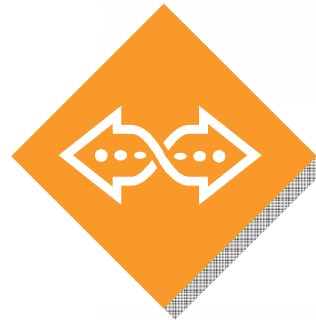
Connect with customers in context

- Leverage rich push services to engage customers based on context and location ([Xtify](#))
- Analyze massive quantities of network and business data to gain real-time customer insights ([The Now Factory](#))
- Identify and remove user experience obstacles ([IBM Tealeaf 8.8](#))



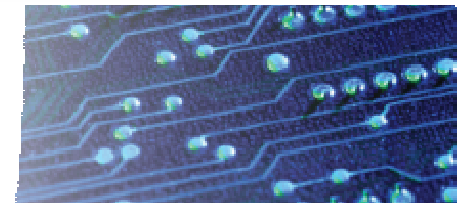
IBM MobileFirst Can Help You:

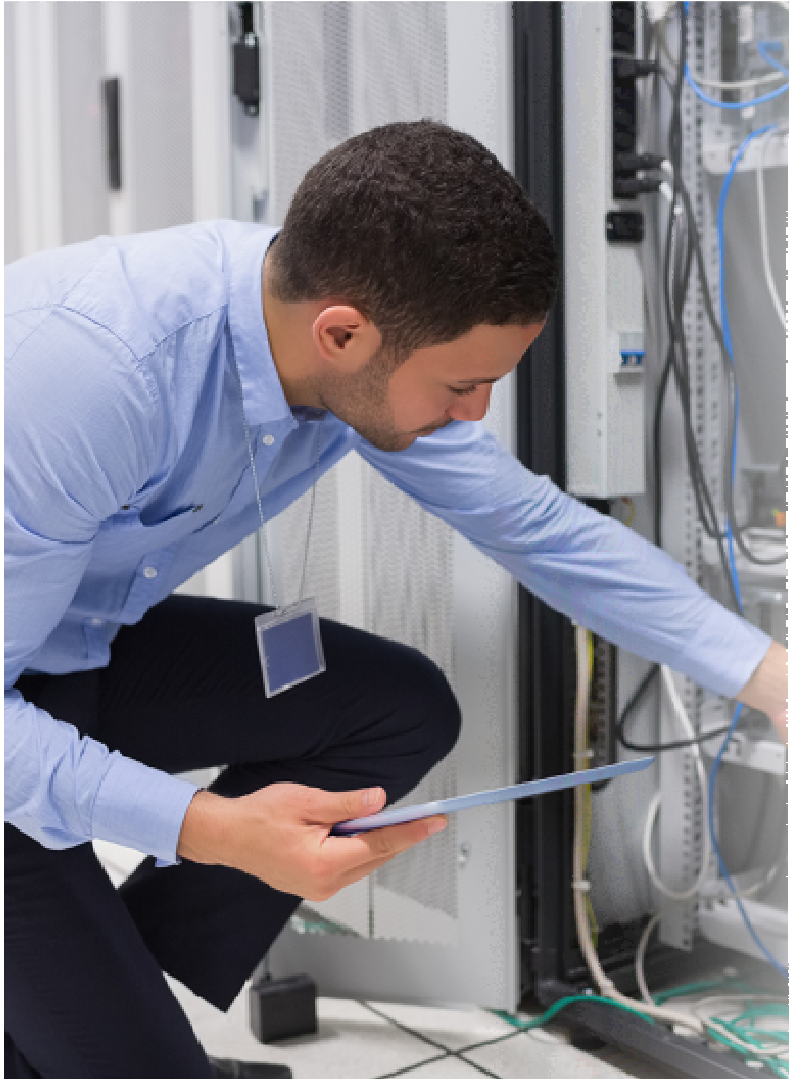
- Leverage world-class design expertise to create transformative experiences across physical and digital worlds
(IBM Interactive Experience)
- Jump start mobile strategy and implementation with **industry starter apps** built on IBM Worklight
- Achieve greater enterprise asset management flexibility with IBM Worklight mobility
(IBM Maximo Anywhere 7.next)



Transform

Create new value at the moment of awareness





Deep dive:



Optimize

Secure & Manage
the mobile infrastructure
to optimize performance



Weak Security

Significant brand impact and financial consequences



*The IBM 2013 Global Study on the Economic Impact of IT Risk Study.



IBM Security Capabilities for the Mobile Enterprise



Effective Mobile Management & Security

...must address the needs of the organization

Improving Productivity
& Employee Satisfaction



Of companies will require employees to provide their own device by 2017

Managing Security
Compliance & Risk



Of companies had a mobile security incident in the past year

Cost of
Mobile Integration



Of companies identify cost as a major inhibitor to adopting a mobile strategy



IBM Unified Device Management



Patch Management



Lifecycle Management



Power Management



Core Protection



Security & Compliance



SW Usage & Analysis



Data Centers



Ad Hoc Analyses/
Tasks

Find and Fix problems in minutes across **ALL** enterprise computers and mobile devices



Comprehensive Mobility Management

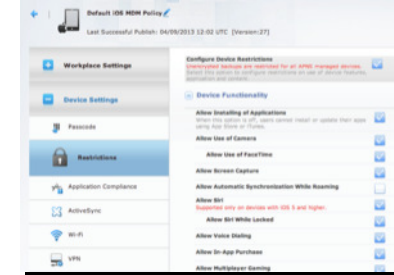


The Essentials

- SMS, email, URL enrollment
- Email, calendar, contact profiles
- VPN and Wi-Fi settings
- Device feature configuration
- Policy updates & changes
- Inventory management
- Compliance reporting



Device Enrollment,
Acceptable Use



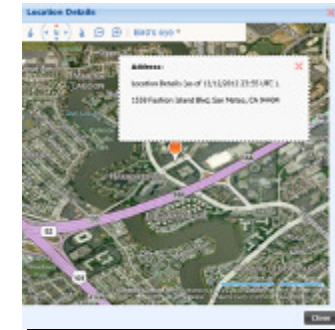
OTA Configuration

Advanced Management

- Mobile app management
- Document sharing
- Event-based policies
- Proactive expense controls
- BYOD privacy settings
- Shared device support
- Self service portal



Enterprise App Catalog



Location-based policies



MaaS360 and IBM

Transforming mobile management and security

- Securely manage the diversity of mobile: devices, apps, content, and networks
 - Simple and fast onboarding process
 - Seamless integration with infrastructure
 - Comprehensive layered security



Expands IBM BYOD capabilities to deliver complete mobile management and security solutions through MobileFirst

*Recognized as a leader by
Gartner in the MDM Magic
Quadrant for 2 years*



Comprehensive Mobile Security & Productivity

Dual Persona to separate personal and work data in the BYOD era

- MaaS360 Secure Mail
- MaaS360 Application Security
- MaaS360 Secure Document Sharing
- MaaS360 Secure Browser



A Trusted WorkPlace container for seamless security and productivity





MaaS360: Core offers



Customer Use Cases

MDM Suite (MDM, Mobile App Mgmt, Mobile Expense Mgmt, Content Cloud)
Secure Productivity Suite ("Container") (Secure Mail, Secure Browser, App Security, MAM, Content Cloud)
Mobile Enterprise Gateway (For Internal Browser, Docs, and Apps Access/VPN)
Secure Content Collaboration (Doc Mgmt, Mobile Edit, Sync/Share, Content Cloud)



1. Best practice for iOS & Android adoption
2. BYOD and/or Apps
3. Compliance
4. Containerization of corporate content
5. User privacy from IT
6. BYOD for sensitive organizations / cultures
7. Access to internal resources from mobile
8. Content repositories
9. Intranet apps
10. Sales enablement (price sheets, etc.)
11. Line of business initiatives (board books)
12. Complete mobile content solution

Top 2014 Trend

New Innovations and Capabilities

Rapidly expanding the breadth of product offerings

MaaS360 On Premises*

- Easy-to-install software appliance
- Deploy in datacenter or hosting environment
- Quick integration with existing systems

MaaS360 Secure Productivity Suite

- Expanded OS Support for Windows Phone 8
- Keep data in sync with file synchronization across devices
- Increase productivity with secure content editing
- Solve more use cases thru stand alone container



IBM Deploys MaaS360

By Fiberlink

IBM enabled MaaS360 for internal use **5 days** after acquisition close

MaaS360
by Fiberlink, an IBM company

70,000+ Users migrated in one month

16,000+ Users registered within 24 hours

48,000+ Users registered in 15 days

200+ Devices enrolled per minute*

<500 Help Desk calls – less than 1/2 of 1%

*at high point

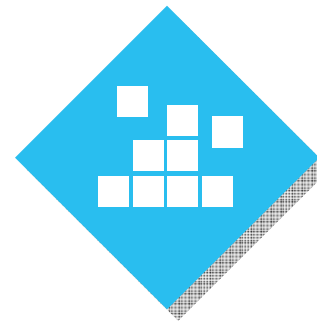




PAYCHEX®



Deep dive:



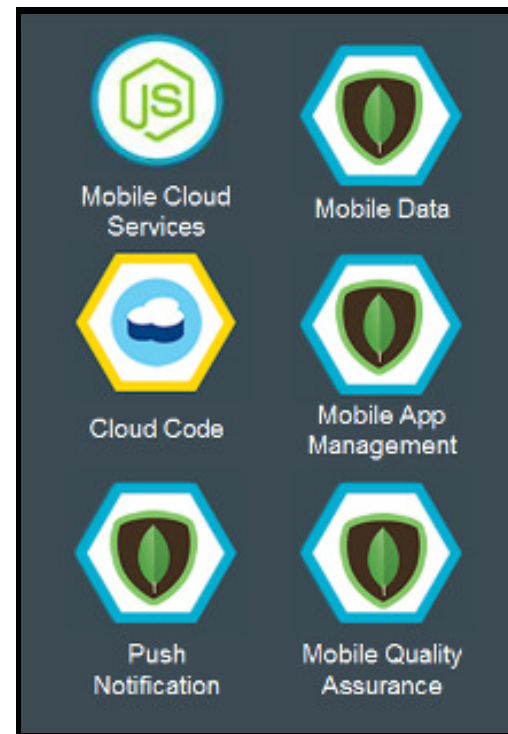
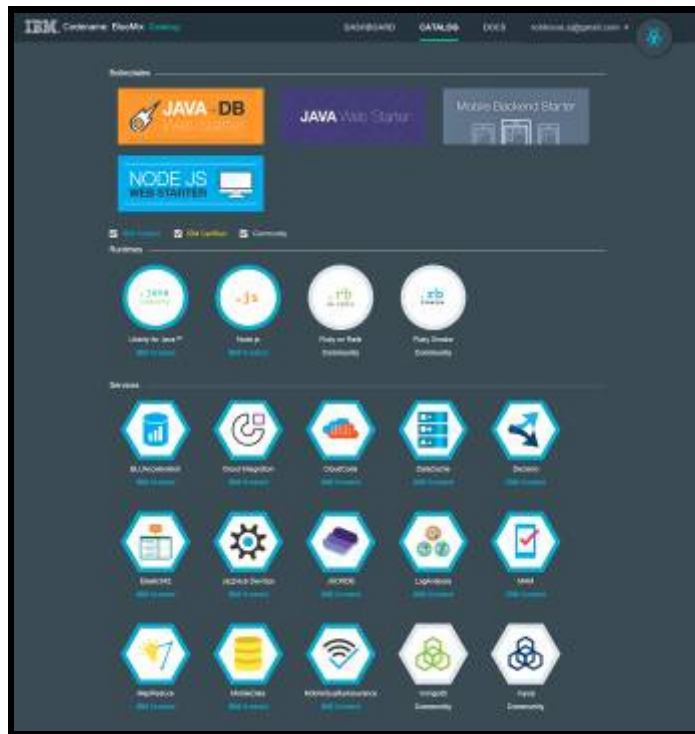
Build

Develop and run applications



IBM BlueMix: Mobile Cloud Services

Simplify app deployment, infrastructure maintenance. Improve app quality with cloud services for mobile. And accelerate app development with SDKs for iOS and Android.



The Way Forward:

Putting mobile first in your enterprise

- 1** View mobility as a **critical business enabler** for future growth and competitive differentiation
- 2** **Prioritize infrastructure** to support mobile and address it strategically as part of your enterprise
- 3** Plan, integrate, optimize and manage IT and communication infrastructures to **securely deploy mobile** to enable growth and competitive differentiation





Managing & Securing the Mobile Enterprise