

Innovate2012

The Premier Event for Software and Systems Innovation



Michael Rhoads
Director, Rational Software
Asia Pacific

Maybe add bridge chart....

Consider adding bridge chart from IDC findings / messages, to the IBM story.



Smarter Software Delivery - Topics

- Software Innovation - New Development Reality
- Accelerating Overall Software Delivery
- Business Planning and Alignment
- Application Life Cycle Management
- DevOps
- Mobile Enterprise Application Development
- Announcements
- Summary

The World We Live in...

Is Exciting for Developers!

- Globalization
- Consumerization of technology
- Cloud, mobile, big data, social business
- Increasing complexity, systems of systems
- Move faster or die



Value Creation Driven by Software in Every Industry

Banking

Automotive

Aerospace

Pharma

Medicine

Electronics

Public

SOFTWARE



Software-driven mobile banking will be the most widely used banking channel by 2020



80% of the current automotive innovation through electronics driven by Software

Almost every Business Innovation Is now driven by Software Innovation



Requirements management and model driven development with UML are “standard”



New surgical robotic system powered by 1.4 million lines of code

Implications for Software and Systems Delivery

More Speed and Agility

- Compelling user experience
- Rapid iterations
- Continuous delivery



Better Control

- Regulatory compliance
- End-to-end security
- Financial predictability

Accelerated Delivery Demands a Quid Pro Quo

Engineering Practitioners

- Design, create, test
- Reuse knowledge, best practices
- Address uncertain things first
- Be adaptive to change

Embrace Measurement

Governance Stakeholders

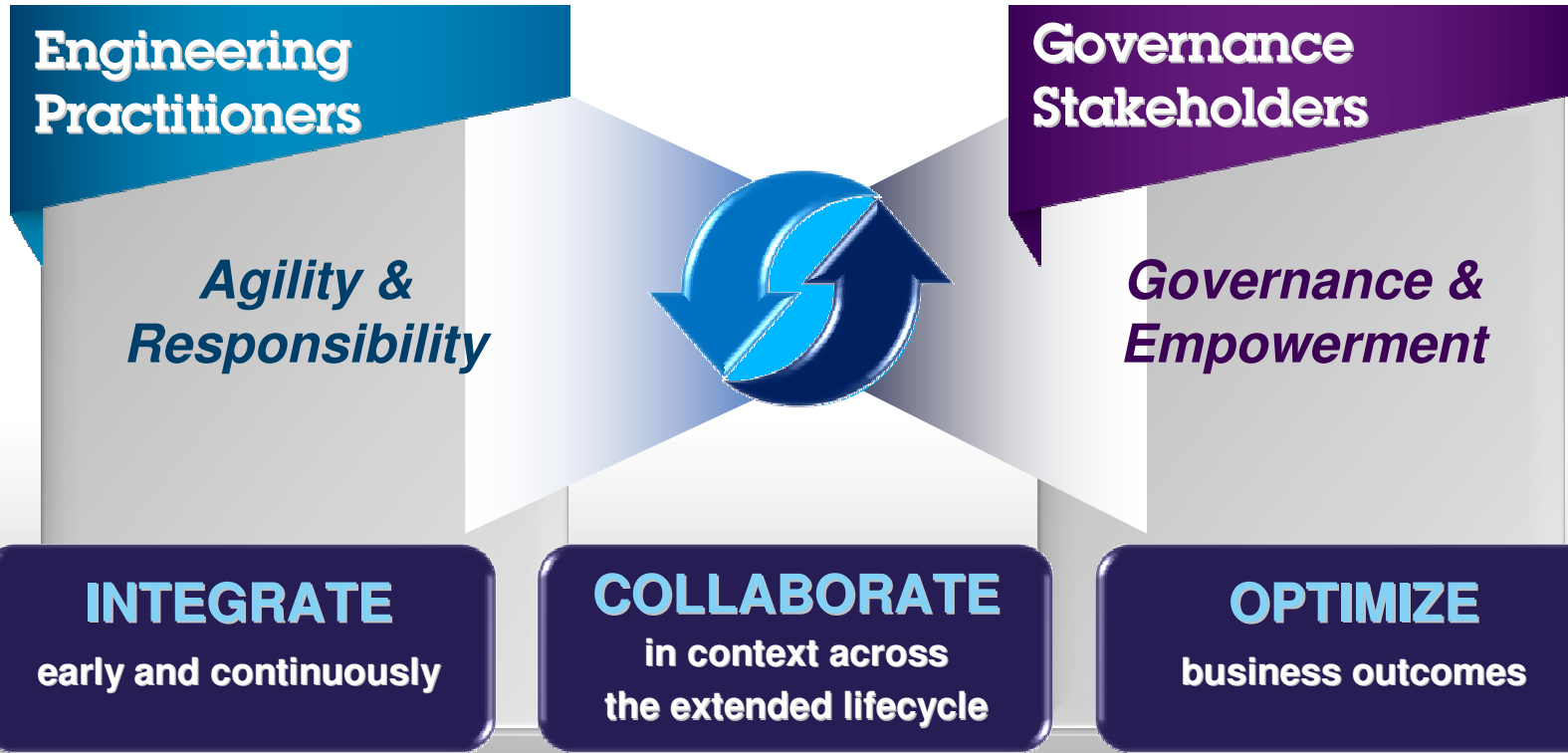
- Achieve predictable outcomes
- Manage risk
- Ensure compliance
- Improve software economics
- Visibility and transparency

Enable Agility



**The Speed
Of Trust**

Succeeding in The New Development Reality



Succeeding in The New Development Reality

INTEGRATE

early and continuously

***Connecting Process
and Information***
Software, data, and tools

- Common architectures
- Outside in design
- Process and tools
- Reuse
- Componentization

COLLABORATE

in context across
the extended lifecycle

***Unifying Teams
Projects, and
organizational cultures***

- Open, common platform
- Whole team shared objectives
- Vibrant communities of subject matter experts

OPTIMIZE

business outcomes

Simplifying Governance
Plans, scope,
and measures

- Economic governance
- Measured improvement (revenue / headcount)
- More efficient operations
- New product investment

Smarter Software Delivery - Topics

- Software Innovation - New Development Reality
- Accelerating Overall Software Delivery
- Business Planning and Alignment
- Application Life Cycle Management
- DevOps
- Mobile Enterprise Application Development
- Announcements
- Summary

Accelerating Overall Software Delivery



**SW is challenging,
but should not be
considered in
isolation**

Lack of software
development process,
skills & automation.

Enhance, modernize,
build new, buy &
customize.

Distributed in-house
or outsourced teams

Accelerating Overall Software Delivery



Step back & look at common failure points across the broader Software Delivery Lifecycle

Poor end-to-end requirements visibility

Unstructured demand management

Limited business and IT prioritization

Lack of software development process, skills & automation.

Enhance, modernize, build new, buy & customize.

Distributed in-house or outsourced teams

Limited overall release management

Poor hand-off from development to production

Unstructured build process

Accelerating Overall Software Delivery

Customers



Line of Business



Software Development



Operations



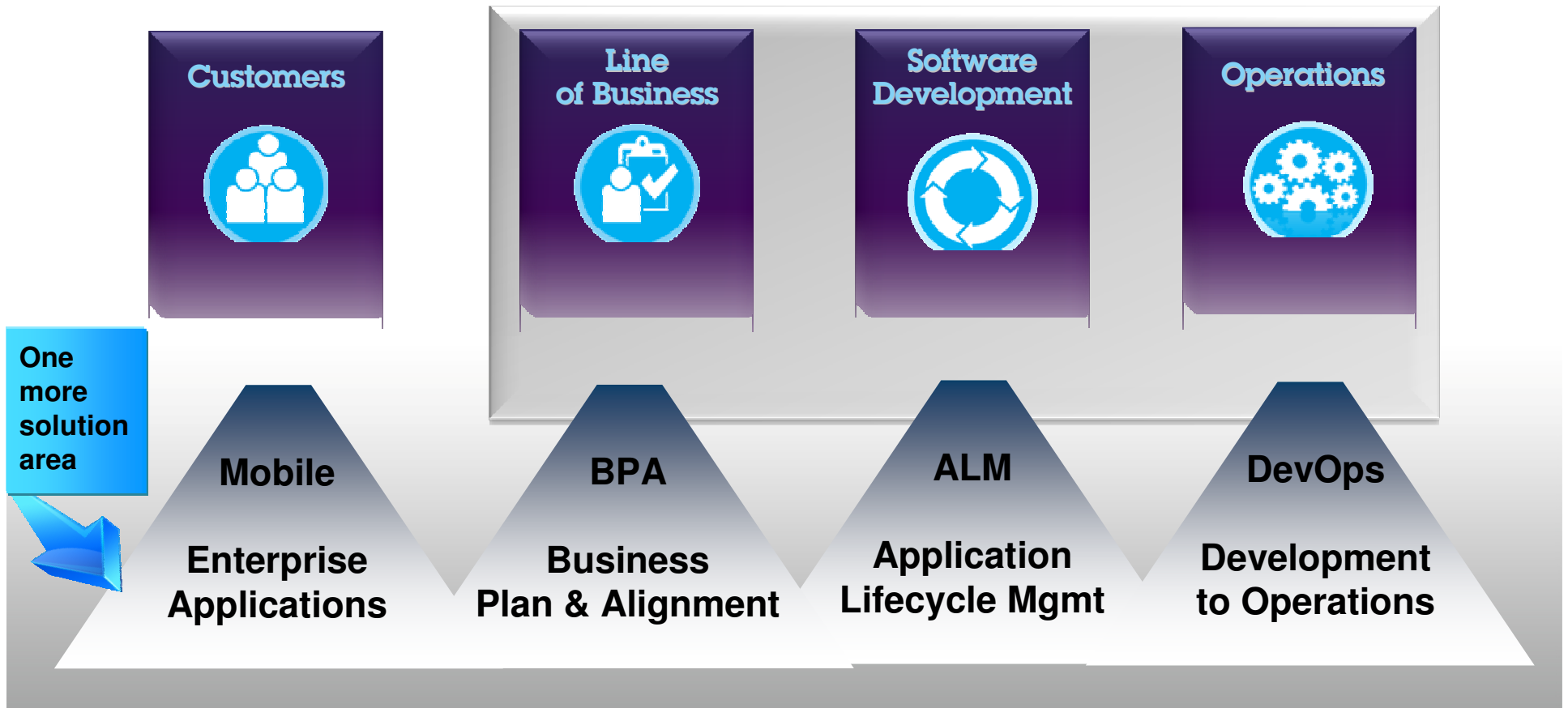
IBM is addressing this through specific solution areas

BPA
Business Plan & Alignment

ALM
Application Lifecycle Mgmt

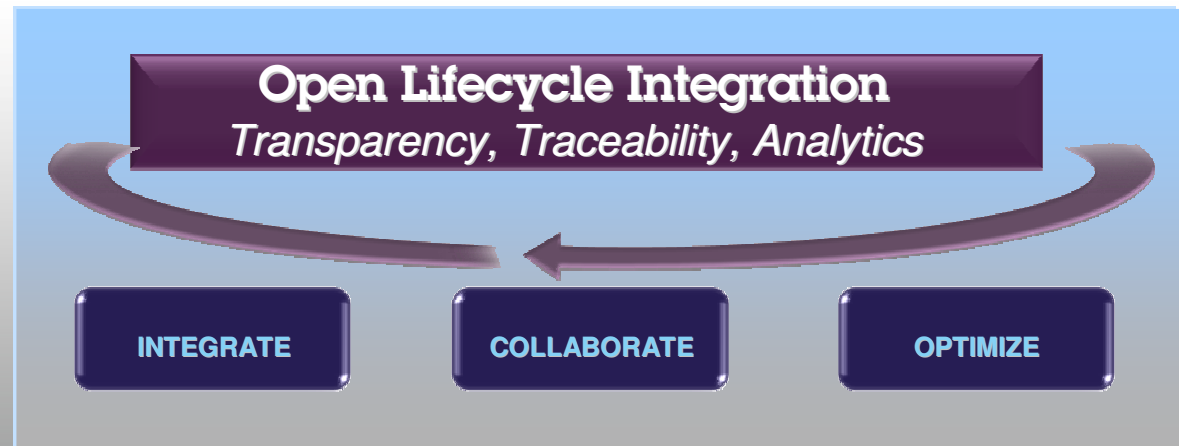
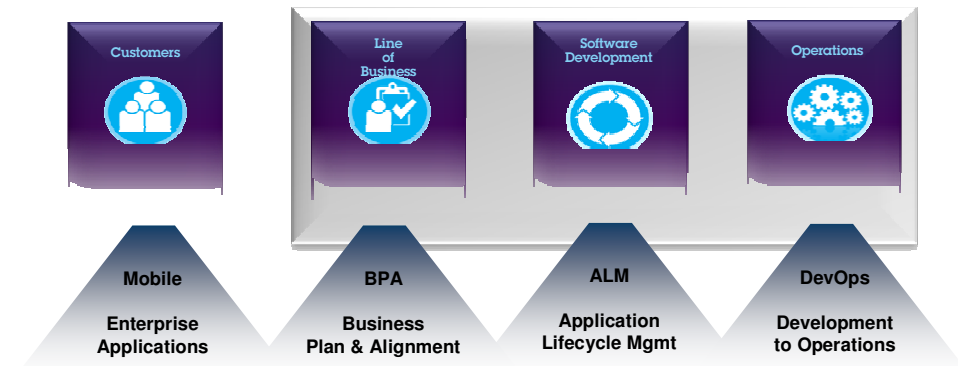
DevOps
Development to Operations

Accelerating Overall Software Delivery



Accelerating Overall Software Delivery

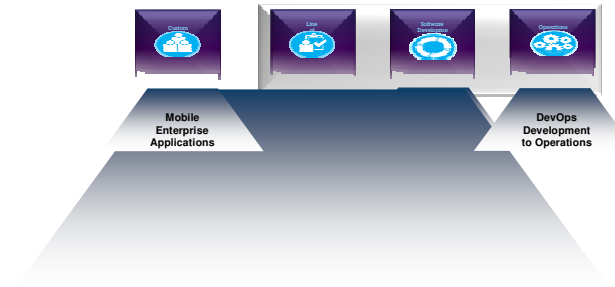
- IBM provides some of the industries best automation offerings in each of the solution areas.
- IBM **Rational** has long been a leader in the ALM area and more recently emerged as the leader in the BP&A area.
- IBM **Tivoli** has long been the leader in the Operations area and now Rational / Tivoli Integrations provide the industries best DevOps solution
- Mobile applications are moving from stand-alone utilities, mash-ups and user apps, to full enterprise apps. IBM **Websphere** and Rational integrations now provide the industry's most complete solution.
- IBM is providing solutions on an Open Lifecycle Integration platform, which helps organizations “Integrate, Collaborate and Optimize”, to accelerate their overall software delivery.



Smarter Software Delivery - Topics

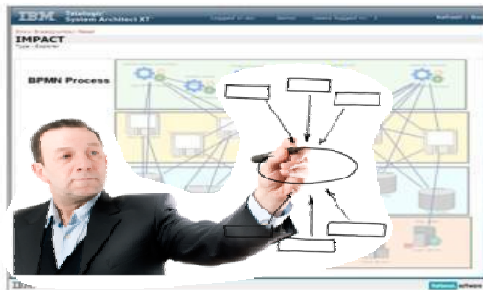
- Software Innovation - New Development Reality
- Accelerating Overall Software Delivery
- Business Planning and Alignment
- Application Life Cycle Management
- DevOps
- Mobile Enterprise Application Development
- Announcements
- Summary

Business Planning and Alignment



Change picture representing INSIGHT. Current picture just a placeholder

Rational System Architect



Enterprise Architecture

- Create organizational blueprint
- Link business & IT information
- Provide key input to enterprise planning
- Provide accurate impact analysis
- Guide successful ent. transformation

Rational Focal Point



Portfolio Management

- Build or buy the right assets
- Build & deploy assets in the right way
- Maintain assets in the right way
- Retire / replace assets at the right times

Rational Insight



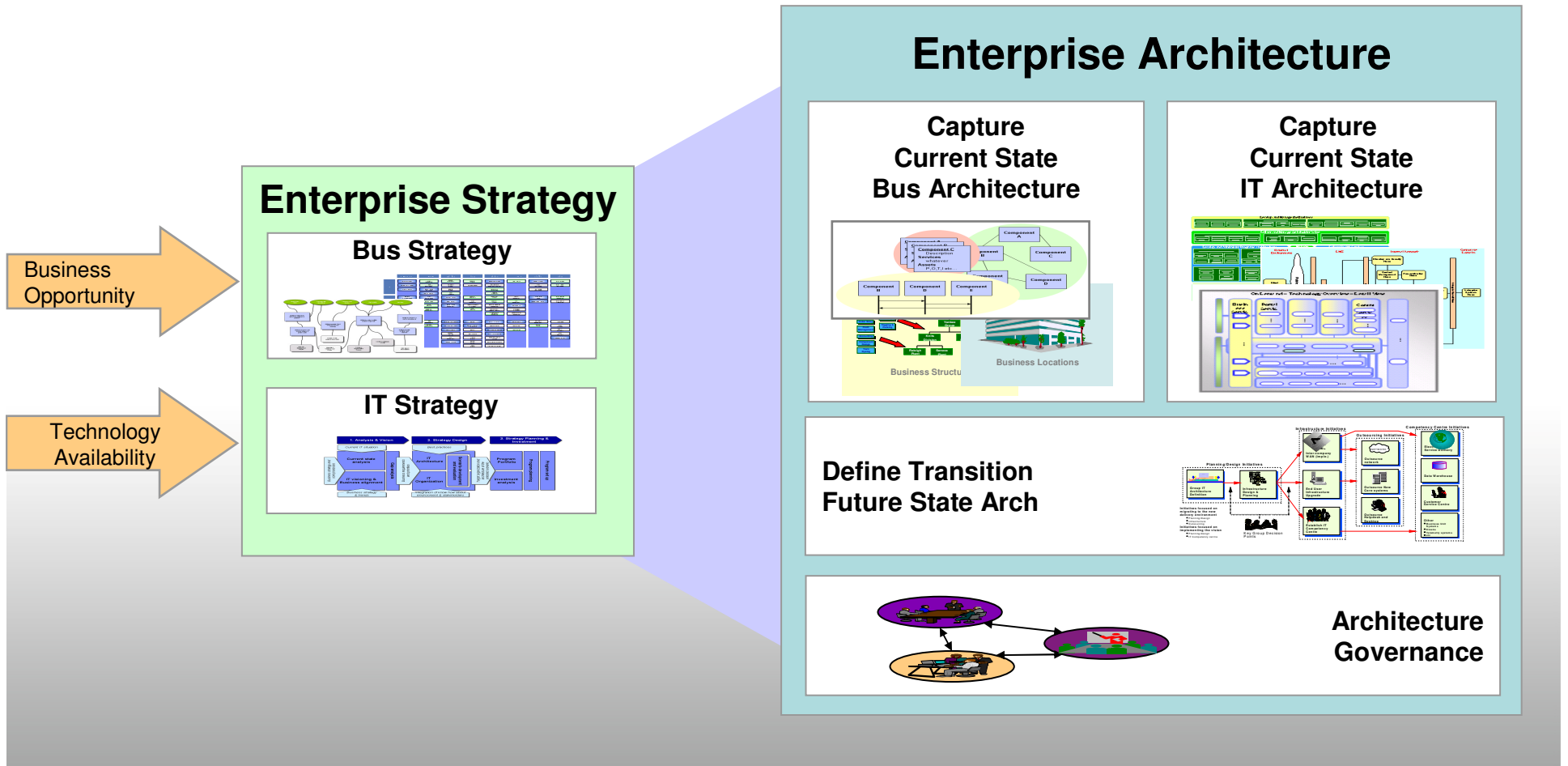
Measurement & Reporting

- Measure, monitor, analyze portfolio, project and process performance
- Continual process improvement
- Built on best-in-class business intelligence platform from IBM Cognos

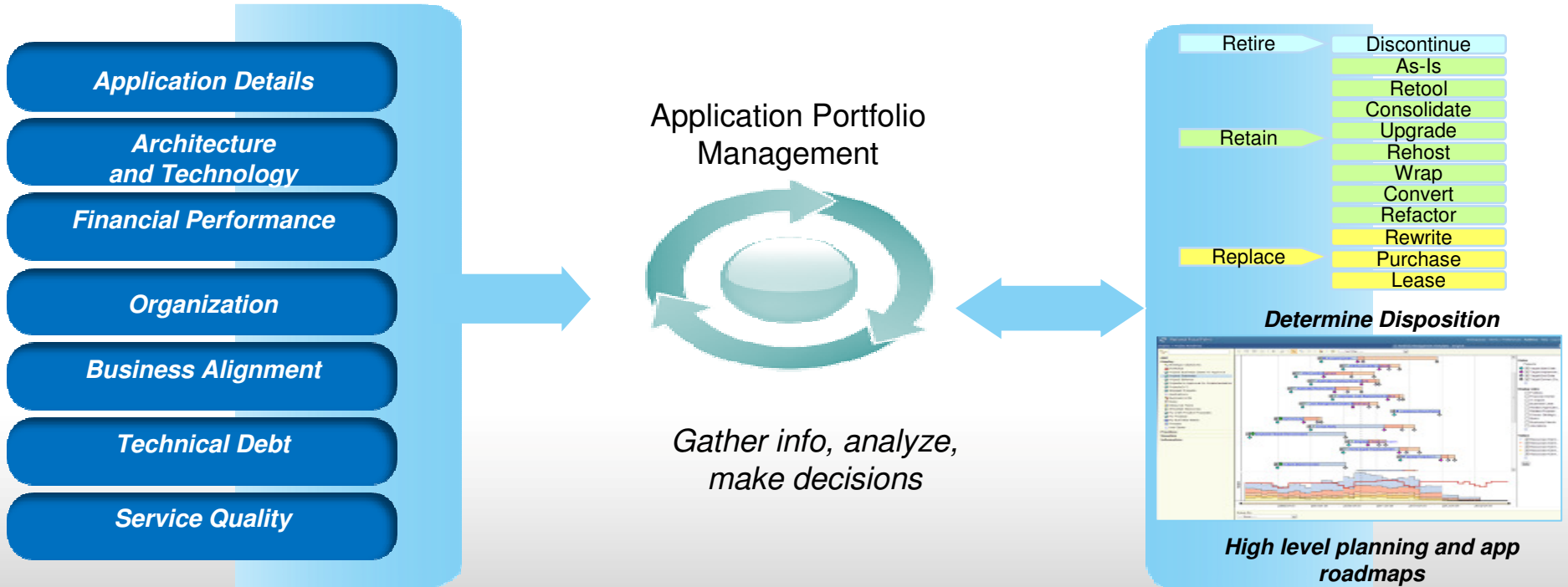
Change picture
representing INSIGHT.
Current picture just a
placeholder

Consider adding bridge
chart from IDC findings /
messages, to the IBM
story.

IBM Rational System Architect



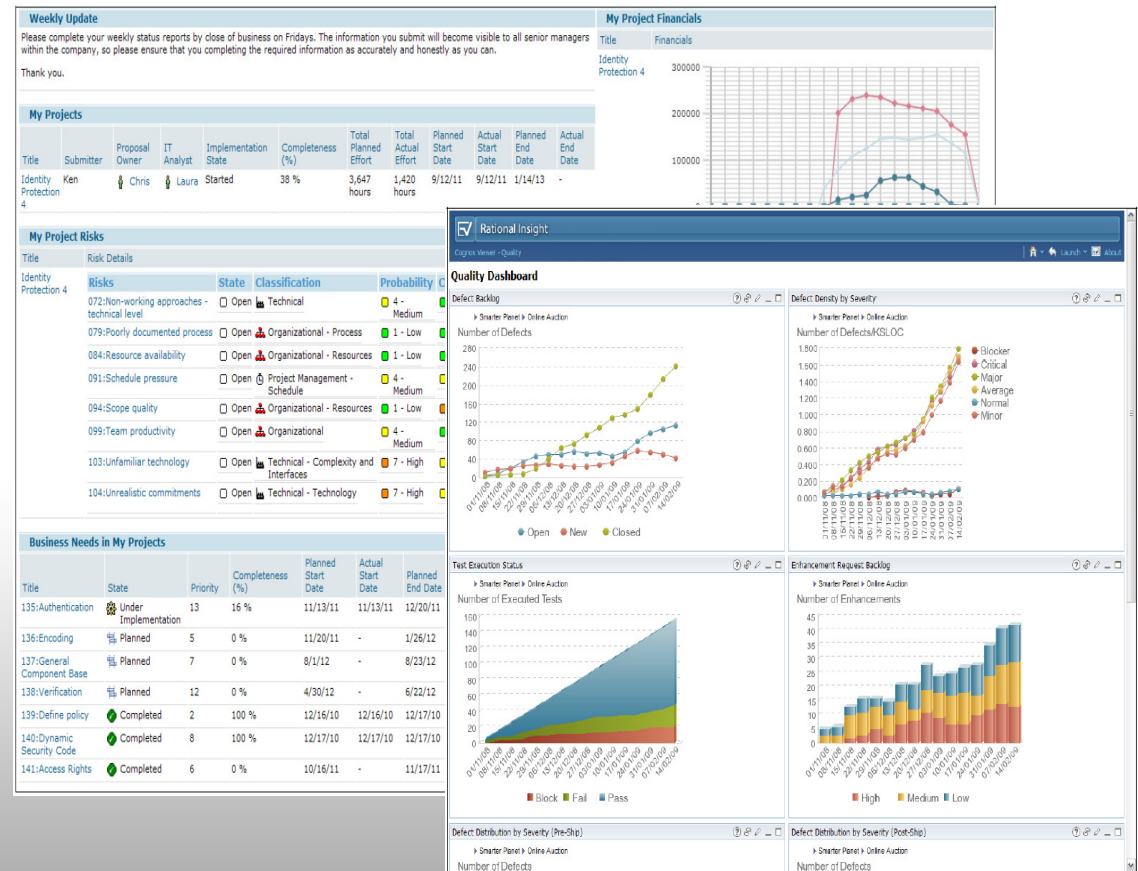
IBM Rational Focal Point



- *Effectively translate business needs to executable roadmaps*
- *Easy to adopt, focus on analytics and execution,*
- *Scales to address maturing customers*

Measurement and Reporting

- Real-time insights from wide variety of data sources, both Business and IT.
- Monitor portfolio, project and process performance
- Continual process improvement to improve organizational outcomes
- Built on best-in-class business intelligence platform from IBM Cognos tailored for Software Delivery.
- Create a business command center with your own Executive Dashboard



Smarter Software Delivery - Topics

- Software Innovation - New Development Reality
- Accelerating Overall Software Delivery
- Business Planning and Alignment
- Application Life Cycle Management
- DevOps
- Mobile Enterprise Application Development
- Announcements
- Summary

Add 2 slides on ALM / CLM

- Maybe the product and capability**
- Maybe the 5 imperatives / best practices**

Add 2 slides on DevOps

- Choose from Orlando Innovate**
- However, only have PDFs not PPT from Orlando**

Add 1- 2 slides on Mobile Enterprise Apps

- Add from Orlando**
- Or look for presentation from Albert Ho**

Smarter Software Delivery - Topics

- Software Innovation - New Development Reality
- Accelerating Overall Software Delivery
- Business Planning and Alignment
- Application Life Cycle Management
- DevOps
- Mobile Enterprise Application Development
- Announcements
- Summary

Add 2 - 3 slides on Announcements

- **Use info from deck Sandra sent**
 - **Make announcement seem MUCH more exciting**
 - **Try to tie-in with products describe in previous section**
 - **Also use Announcement to resonate with customers business problems**
- 

Conclusion

- **Use summary slide of key points from presentation**
- **Also bridge to introduce next presentations (review Kedar / Adam)**
- **Possibly make an “offer” for some sort of workshop (check with Paul)**

Innovate2012

The Premier Event for Software and Systems Innovation

Back-Up



Attaining Accelerated Delivery **NOW**

High impact entry points for IT organizations

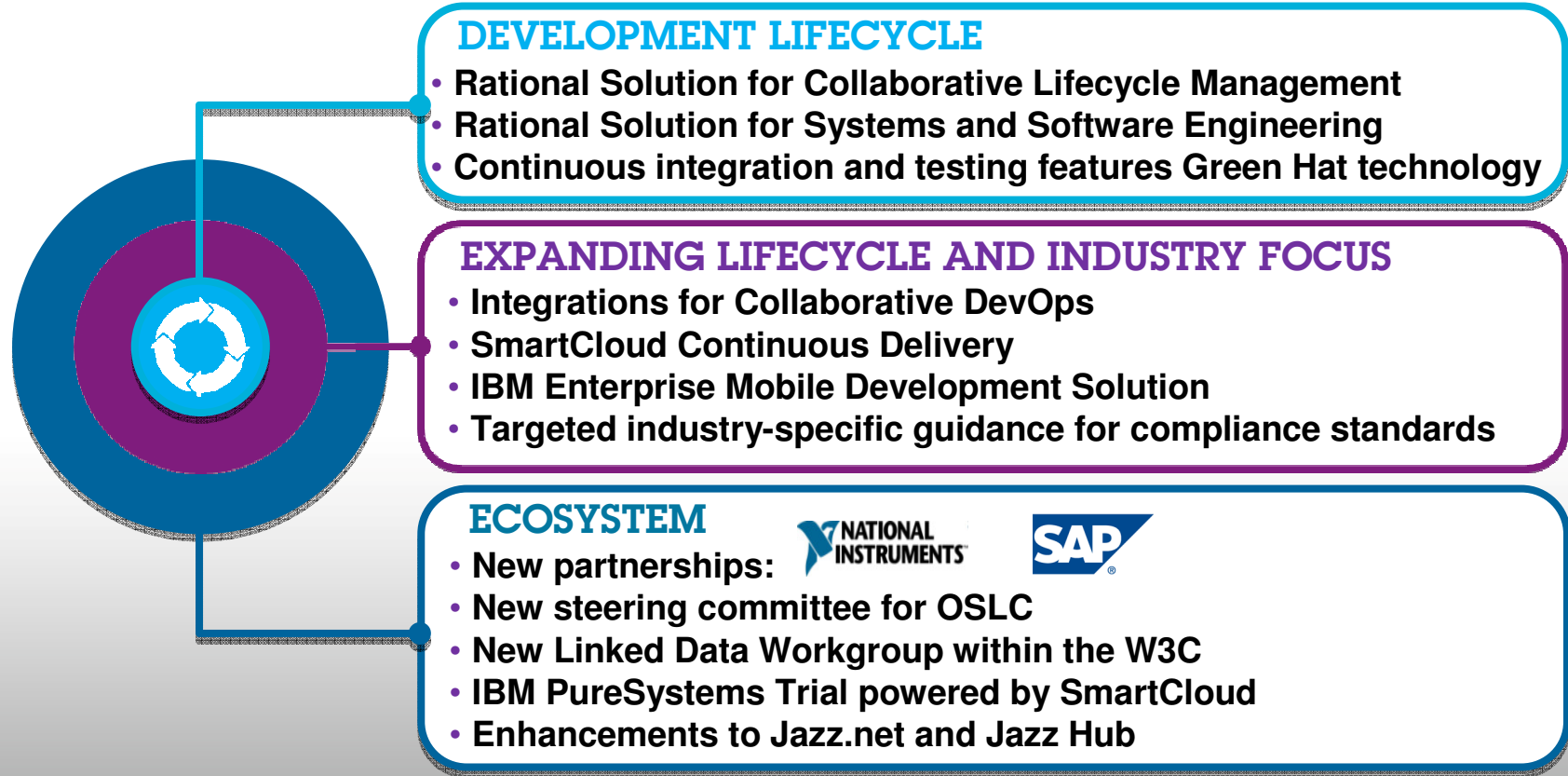
- Elaborate user experience earlier in lifecycle
- Link requirements management to test
- Make integration, test and deployment continuous
- Scale agile to enterprise with governance and metrics

Attaining Accelerated Delivery *NOW*

High impact entry points for product and systems organizations

- Implement cross-discipline systems engineering
- Implement model-based systems engineering
- Integrate tools and data for lifecycle traceability

New Capabilities from IBM to Enable Agility with Governance



Innovate2012

The Premier Event for Software and Systems Innovation

Community Drives Everything

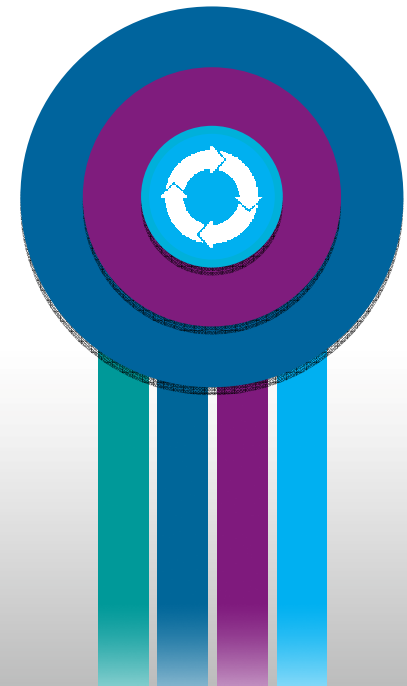
Community directs our vision, development, and this conference

- Jazz.net – now more than 100K members
- developerWorks – more than 4M visitors per month
- open-services.org – more than 140 member companies now transforming through a new governance model
- W3C – Working group chartered on Linked Data, underpinnings of Internet style integration
- Over 500 IBM Rational authorized business and technology partners



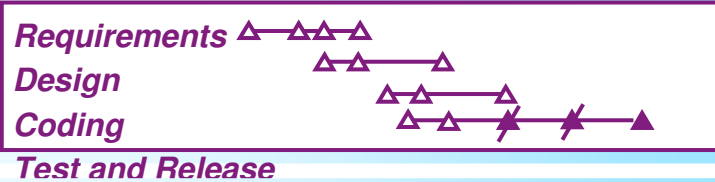
How to Move Forward

- Act now to transform your software and systems delivery
- Start today and leverage Innovate to the maximum
- Post Innovate: Benefit from our experience!

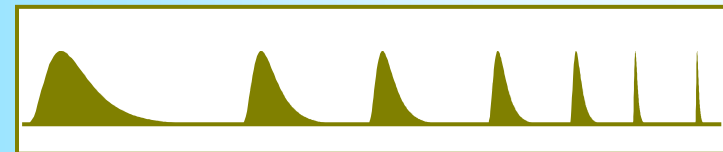
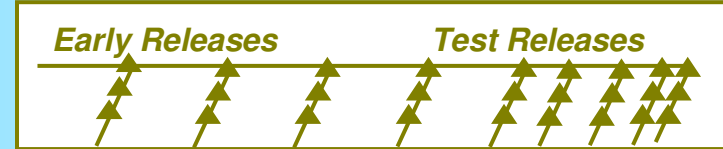


Measured Improvement: *Progress Econometrics*

Conventional Engineering Governance



Modern Economic Governance



Planning Progress

Technical Progress

Economic Progress

Measured Improvement: *Quality Econometrics*

Conventional Engineering Governance

Modern Economic Governance



Maturity
Defect Trend



Modularity
Change Volume Trend



Adaptability
Cost of Change Trend



Improving Software Economics

- VOLUME OF CODE**
- Quality/Performance
 - Integration first
 - Manage scope
 - Asset-based reuse

- PROCESS**
- Steering
 - Good practices
 - Maturity
 - Domain knowledge

Resources = Complexity *Agility* * Collaboration * Automation

- TEAMWORK**
- Synchronization
 - Skills
 - Experience
 - Motivation

- TOOLING**
- Process enactment
 - Measurement
 - Instrumentation
 - Manage complexity

Productivity Improvement Leverage

Economic Impacts

Reduce Complexity

Productivity:
2x – 10x
Timeframe is Years

Cost to Implement:
25%-50%
Much culture change

Organization

Increase Agility

Productivity:
25-100%
Timeframe is Quarters

Cost to Implement:
10%-35%
Some culture change

Project

Improve Collaboration

Productivity:
15-35%
Timeframe is Months

Cost to Implement:
5%-10%
Predictable

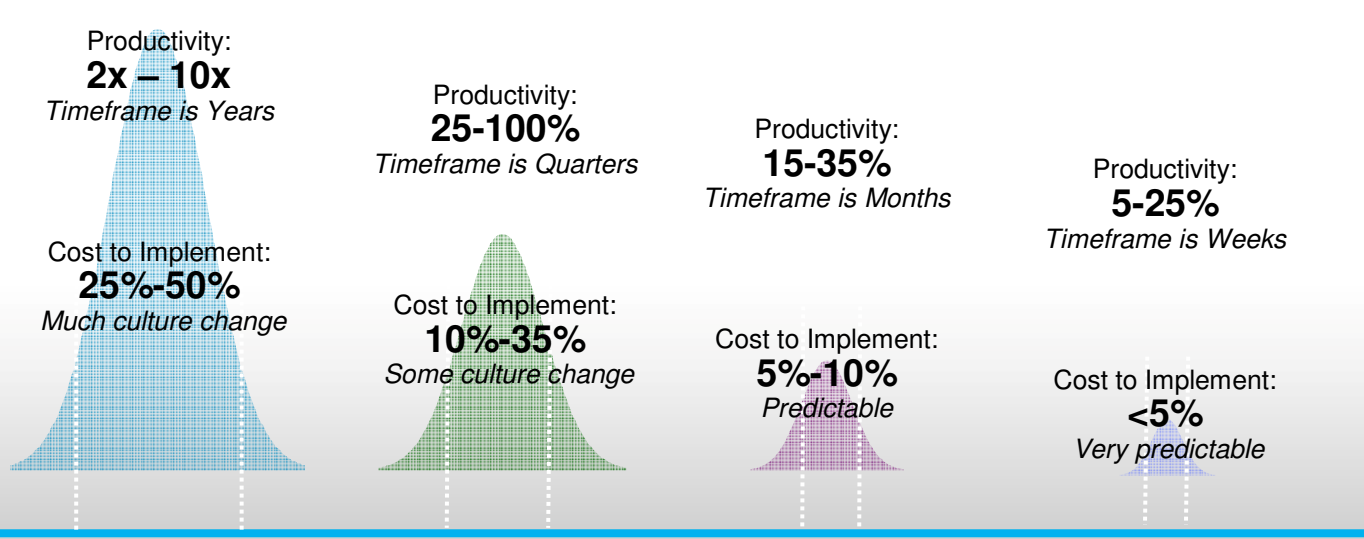
Team

Add Automation

Productivity:
5-25%
Timeframe is Weeks

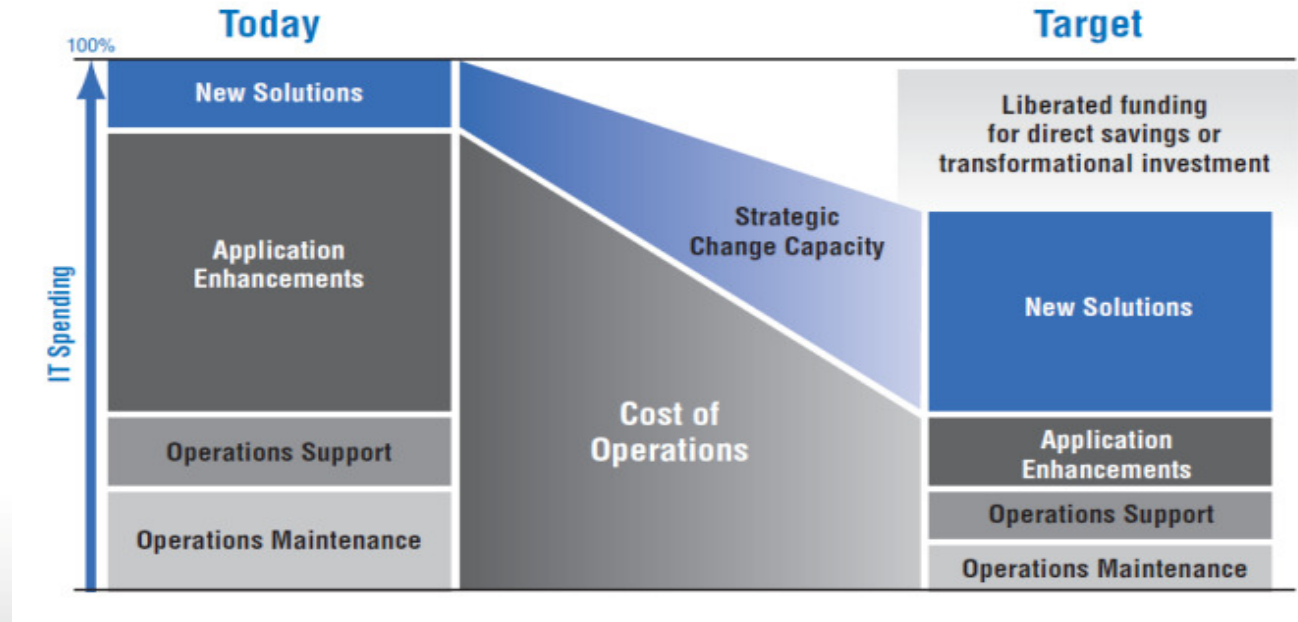
Cost to Implement:
<5%
Very predictable

Individual



Why are they important ?

- **Cost – 80/20 budget trap**
 - Maintenance and operations consumes high % of budget
 - Limited budget remaining for new initiatives
- **Business agility**
 - Tightly coupled architectures
 - Unwarranted complexity
 - Technology proliferation
- **Strategic planning**
 - Inability to actively plan strategic initiatives
 - Cloud, Mobile, Compliance, M&A, and Divestitures
- **Risk / supportability**
 - Key skills move companies
 - People retiring
 - Aging technology



A large UK bank transformation initiative

- 90 / 10 - Started at 90% run-the-bank leaving only 10% for growth initiatives
- 40 / 60 - Shifted to 40% run-the-bank and a huge 60% for growth initiatives

Dell organizational prioritization

- 80 / 20 - Started at 80% maintenance and only 20% innovation
- 50 / 50 - Moved to 50% maintenance and 50% on innovation spending

Enterprise Architecture

Professional Blueprint

- Define strategy and vision
- Capture process, org, apps, tech
- Diagrams, heat maps, relationships

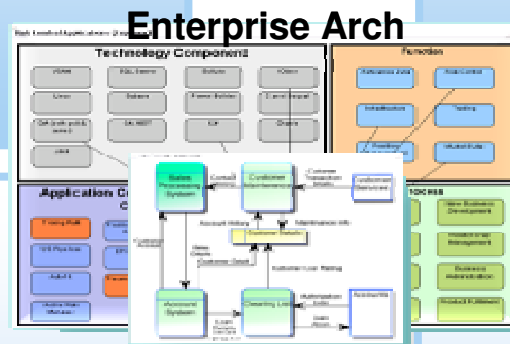
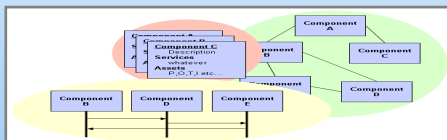


Frameworks/Standards

- Support for multiple frameworks and modeling standards (TOGAF, DODAF)
- Windows and web-based clients for flexibility, productivity and access

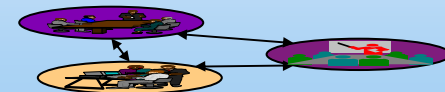
Impact Analysis

- Assess gaps, visualize architectural roadmaps.
- Relationships for impact analysis
- Define future state and transitions



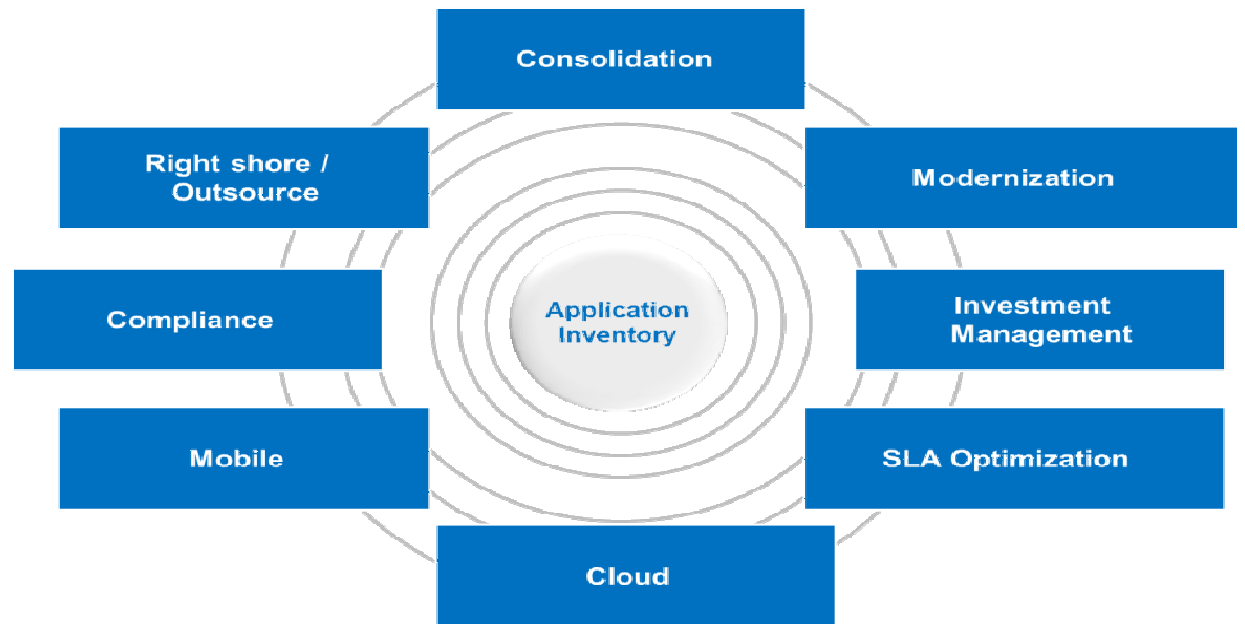
Actionable Arch.

- Use info for Strategy and Arch Review Boards
- Integrate with application lifecycle mgmt and ent modernization



IBM Rational Focal Point

Prioritize



Create Inventory

- Import existing spreadsheets
- Use tool to capture info
- Automatic feeds
- Single source of Truth

Analyze Business / IT Value

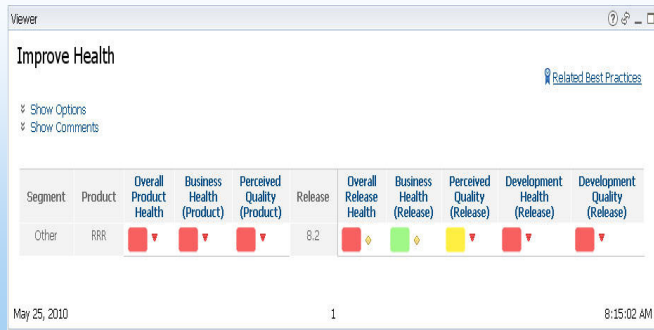
- Use pre-defined criteria
- Flexible weighting
- Additional data capture
- Multiple pair-wise comparisons

Recommendations

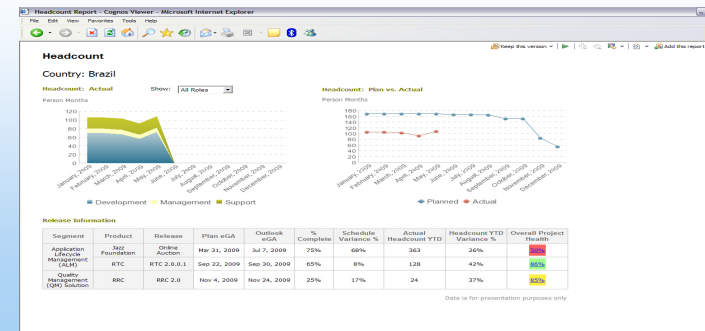
- Consolidation
- Modernization
- Cloud/Mobile
- Right-shore / Outsource

Measurement and Reporting

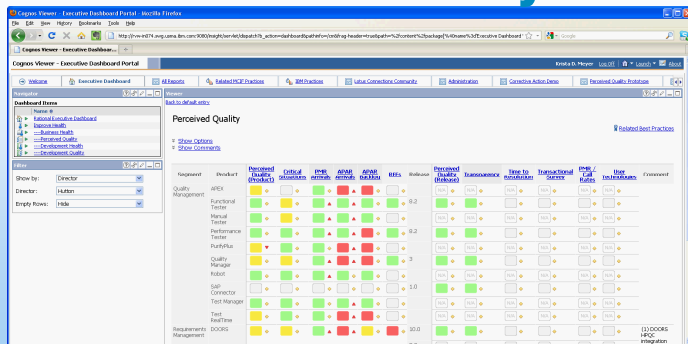
Project Health



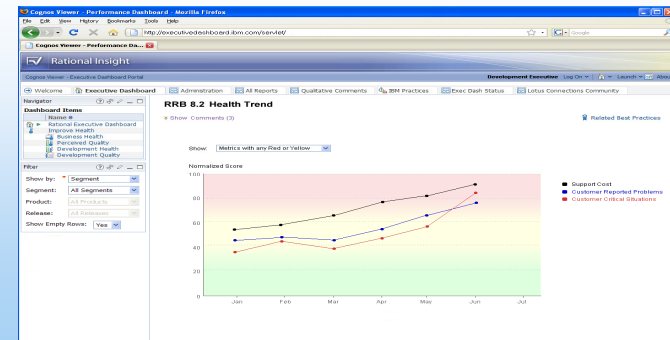
Financial (staff, funds)



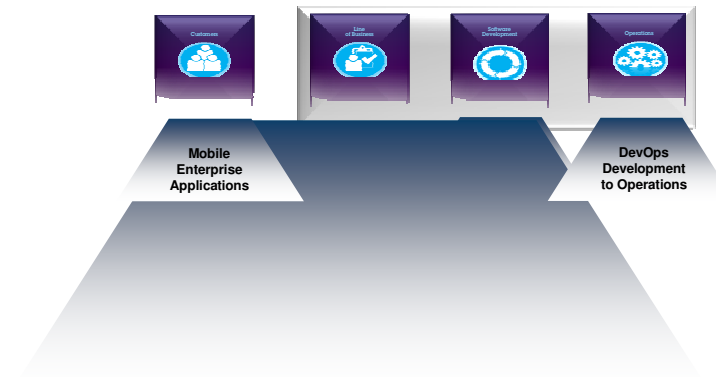
Perceived Quality



Technical Debt



BPA - Business Planning and Alignment



Enterprise Architecture

- Realize business benefits from technology solutions
- Integrations to drive transformation and traceability of artifacts from business and IT strategy
- Pinpoint how and when to leverage services and technologies
- Improve efficiency and agility – change architectures to respond to business change

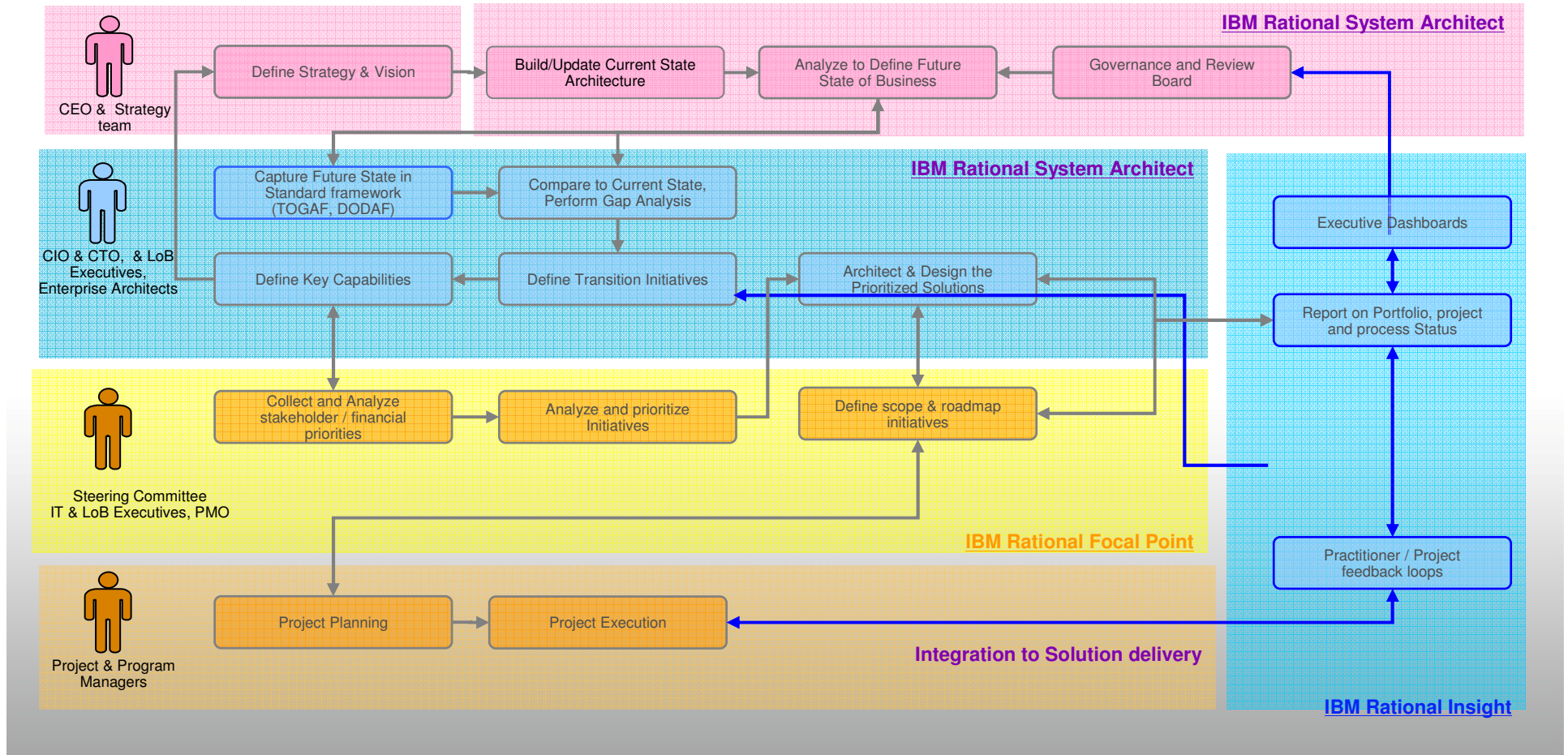
Portfolio Management

- Effectively translate business needs to executable roadmaps
- Align application inventory with business direction and focus resources on strategic priorities
- Simplify existing application assets. Improve quality and functional capability
- Transform the legacy portfolio to respond quickly and efficiently to business changes

Measurement and Reporting

- Get real-time insights
- Measure, monitor, analyze portfolio, project and process performance
- Continual process improvement to improve organizational outcomes
- Built on best-in-class business intelligence platform from IBM Cognos

Business Planning & Alignment Process Flow



IBM Client Successes



30 – 35%

production increase

with no additional staff



77%

quality issue reduction

by leveraging agile testing



100%

on-time deliveries

with 25% increase in team satisfaction



40%

reduced time-to-market

for signaling systems products

Accelerating Overall Software Delivery



Step back & look at common failure points across the broader Software Delivery Lifecycle

Poor end-to-end requirements visibility

Unstructured demand management

Limited business and IT prioritization

Lack of software development process, skills & automation.

Enhance, modernize, build new, buy & customize.

Distributed in-house or outsourced teams

Limited overall release management

Poor hand-off from development to production

Unstructured build process